

Trachea, receptor type/virus binding pattern

$\alpha$ -2,3

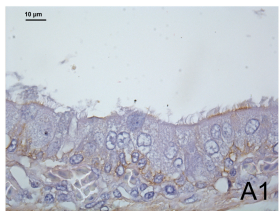
H4N5

$\alpha$ -2,6

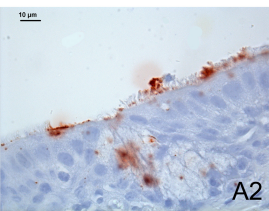
H1N1



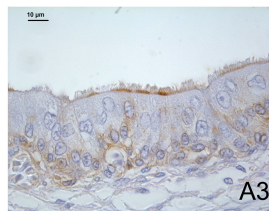
Chicken



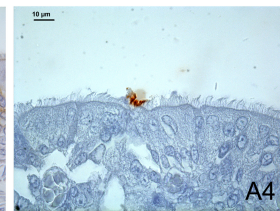
A1



A2



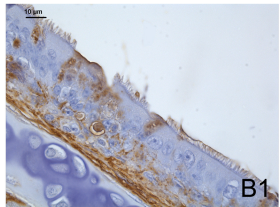
A3



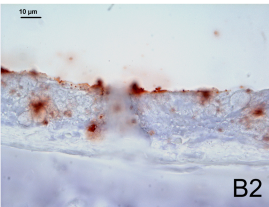
A4



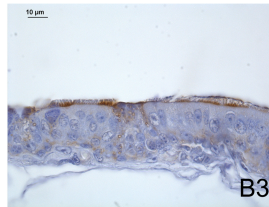
Quail



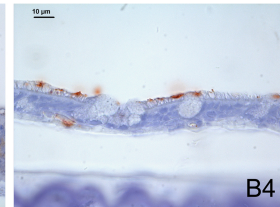
B1



B2



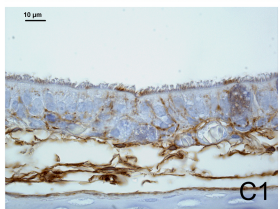
B3



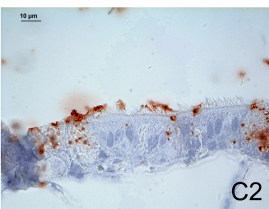
B4



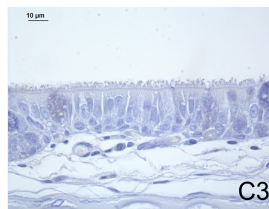
Partridge



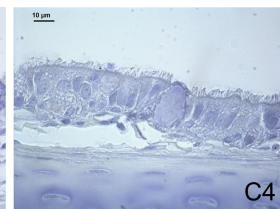
C1



C2



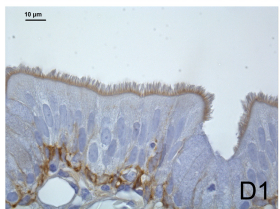
C3



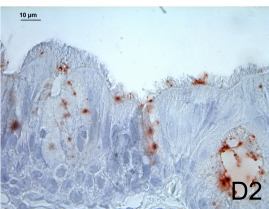
C4



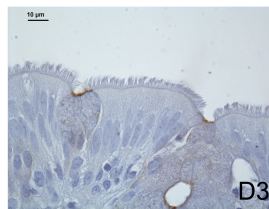
Turkey



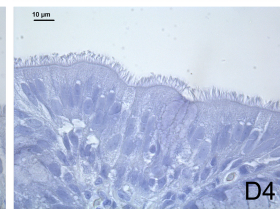
D1



D2



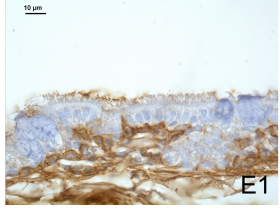
D3



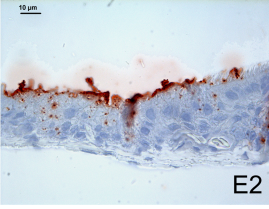
D4



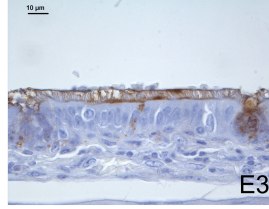
Pheasant



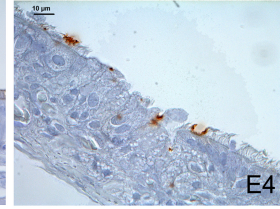
E1



E2



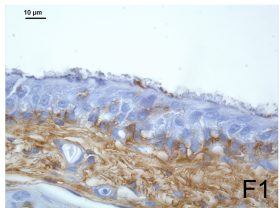
E3



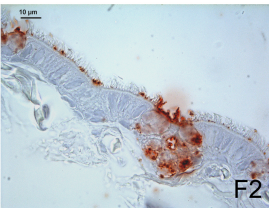
E4



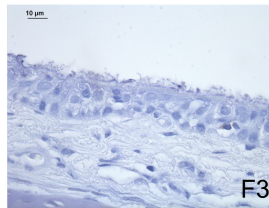
Ostrich



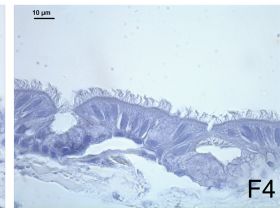
F1



F2



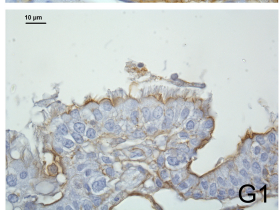
F3



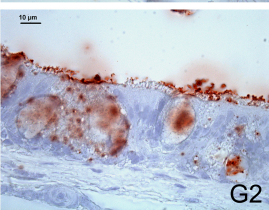
F4



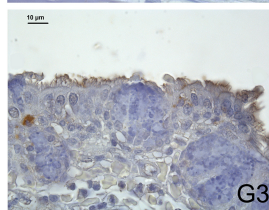
Mallard



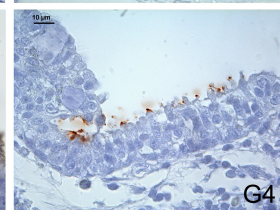
G1



G2



G3



G4