

## Highlights Note

### Engaging Stakeholders for Adaptation and Food Security: Contributions by the AgMIP A-Teams

#### Organizers

Cynthia Rosenzweig (NASA GISS) and Erik Mencos Contreras (Columbia University)

#### Speakers

Cynthia Rosenzweig, Senior Research Scientist, NASA GISS

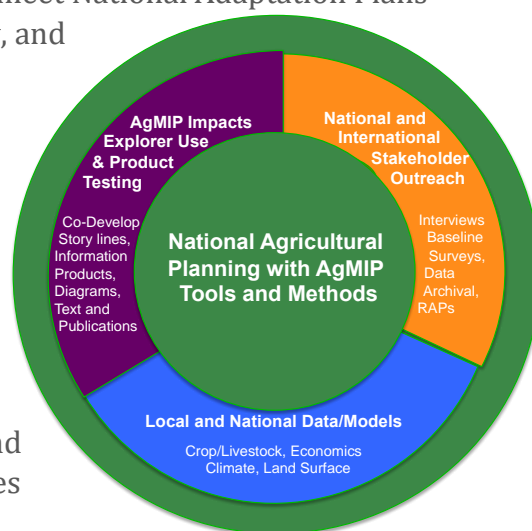
Laure Tall, Research Director, IPAR Senegal

Sabine Homann-Kee Tui, Senior Scientist, ICRISAT Malawi

Dilys MacCarthy, Senior Research Fellow, University of Ghana

#### Key Messages

- Regional Integrated Assessments are required to meet National Adaptation Plans that include climate change impacts, vulnerability, and economic feasibility of resilience strategies.
- It is important to bring science and policy closer together, as well as to invest in national institutional capacity and human skills, stakeholder-driven and cross-disciplinary joint ventures, financial inclusiveness, gender responsiveness, and equality so that sustainable agri-food systems can evolve.
- There is strong demand from stakeholders in Sub-Saharan Africa for impact assessment data and information provided by AgMIP to create synergies among development actors while meeting the requirements and expectations of policymakers.



#### Key Discussion Topics

- Participants agreed on the need for the AgMIP Regional Integrated Assessment methodology in addressing climate change impacts on agriculture, in particular for developing adaptation strategies for vulnerable smallholder farmers.
- Participants raised the key point of the importance of inclusion of farmer groups in stakeholder engagement.