

Assessing urban population vulnerability and environmental risks across an urban area during heatwaves – implications for health protection

H. L. Macintyre^a, C. Heaviside^{a,b,c}, J. Taylor^d, R. Picetti^b, P. Symonds^d, Xiaoming Cai^c, S. Vardoulakis^{b,c,e}

a. Chemical and Environmental Effects Department, Centre for Radiation Chemical and Environmental Hazards, Public Health England, Chilton, Oxon, OX11 0RQ, UK.

b. London School of Hygiene and Tropical Medicine, Keppel Street, London WC1E 7HT, UK.

c. School of Geography, Earth and Environmental Sciences, University of Birmingham, Edgbaston, Birmingham, B15 2TT, UK.

d. University College London, Gower Street, Kings Cross, London WC1E 6BT, UK.

e. Institute of Occupational Medicine, Research Avenue North, Riccarton, Edinburgh, Midlothian, EH14 4AP, UK.

Correspondence: Helen.Macintyre@phe.gov.uk

ABSTRACT

Heatwaves can lead to a range of adverse impacts including increased risk of illness and mortality; the heatwave in August 2003 has been associated with ~70,000 deaths across Europe. Due to climate change, heatwaves are likely to become more intense, more frequent and last longer in the future. A number of factors may influence risks associated with heat exposure, such as population age, housing type, and location within the Urban Heat Island, and such factors may not be evenly distributed spatially across a region. We simulated and analysed two major heatwaves in the UK, in August 2003 and July 2006, to assess spatial vulnerability to heat exposure across the West Midlands, an area containing ~5 million people, and how ambient temperature varies in relation to factors that influence heat-related health effects, through weighting of ambient temperatures according to distributions of these factors across an urban area. Additionally we present quantification of how particular centres such as hospitals are exposed to the UHI, by comparing temperatures at these locations with average temperatures across the region, and presenting these results for both day and night times. We find that UHI intensity was substantial during both heatwaves, reaching a maximum of +9.6°C in Birmingham in July 2006. Previous work has shown some housing types, such as flats and terraced houses, are associated with increased risk of overheating, and our results show that these housing types are generally located within the warmest parts of the city. Older age groups are more susceptible to the effects of heat. Our analysis of distribution of population based on age group showed there is only small spatial variation in ambient temperature that different age groups are exposed to. Analysis of relative deprivation across the region indicates more deprived populations are located in the warmest parts of the city.

KEYWORDS: urban heat island, spatial vulnerability, heat waves, health effects.

1. INTRODUCTION

1.1 Heat exposure and health

1 Heatwaves, or extended periods of hot weather, are associated with various risks to health
2 including heat exhaustion, heatstroke, emergency hospitalisations, and death. A severe
3 heatwave in August 2003 has been associated with up to 70,000 excess deaths across Europe
4 (Robine et al., 2008), with over 2,000 excess deaths estimated in England (Johnson et al., 2005),
5 and a record breaking maximum temperature of 38.5°C reached in south east England. High
6 temperatures were also recorded throughout much of the UK during the summer of 2006. In
7 the West Midlands, the two heatwave events of 2003 and 2006 were comparable in terms of
8 estimated excess mortality, being around 10% higher than baseline rates at this time of year in
9 both cases (Health Statistics Quarterly, 2006; Johnson et al., 2005). In the future, heatwaves are
10 projected to become more frequent, more intense, and last longer, due to climate change (Kirtman
11 et al., 2013), which will likely lead to increases in heat-related mortality (Hajat et al., 2014; Mitchell
12 et al., 2016; Vardoulakis et al., 2014). Some evidence suggests there is an upper limit to which
13 humans can adapt to temperature (Arbuthnott et al., 2016; Sherwood and Huber, 2010).

14 In the UK, the risk of temperature-related mortality is projected to increase steeply in the UK over
15 the 21st century under climate change and demographic change scenarios, reaching 260% by 2050,
16 and 540% by 2080 (compared with the 2000s heat-related mortality baseline of around 2,000
17 premature deaths), with the elderly being most at risk (Hajat et al., 2014; HPA, 2012).

18 Future climate projections are often produced at relatively coarse spatial resolution, due to the
19 cost of computing power required. Factors relevant for the study of heat-exposure and human
20 health, including population age, socioeconomic factors, and the built environment such as
21 dwelling type and the urban heat island, are at a much finer spatial scale. Our study aims to
22 simulate ambient temperature across an urban area during a heatwave period, and subsequently
23 quantify the variation in ambient temperature with other factors that relate to and influence heat-
24 related health effects. This includes population-weighting of ambient temperatures, as well as
25 calculating the ambient temperature weighted according to distributions of different housing types,
26 population age, and deprivation score, all factors that influence heat-health relationships. Using
27 environmental modelling techniques in this way to look at human health in relation to heat
28 exposure during heatwaves (which will become increasingly important in the future with climate
29 change) is a novel way of analysing spatial distribution of risks across a large urbanised region.
30 While we have used a detailed case study here, the technique and metrics are applicable to any
31 scenario, which we feel is useful for a wider scientific community.

32 1.2 The Urban Heat island (UHI)

33 Populations may be particularly at risk from heat due to the Urban Heat Island (UHI) effect
34 (Heaviside et al., 2017), whereby ambient temperatures are often observed to be higher than
35 those in surrounding less-urbanised areas, particularly at night. The main cause of the UHI is the
36 modification of land surfaces, for example, replacing natural surfaces (e.g. vegetation which
37 provide natural shading and cooling via evaporation) by paving or construction of buildings.
38 Urban construction materials (such as concrete, tarmac and asphalt) generally absorb, retain
39 and re-radiate heat more than natural surfaces. Buildings also provide multiple surfaces to

1 reflect and absorb sunlight, increasing urban heating, and impeding air circulation. Heat from
2 human activities (such as air conditioning, vehicles, and industrial processes) can also add to
3 the UHI effect. The UHI effect is often most extreme during anticyclonic summer weather
4 conditions, which are associated with heatwaves. In England and Wales, 82% of the population
5 reside in urban areas (ONS, 2011), leaving them vulnerable to the impacts of heat exposure due
6 to the UHI effect. The West Midlands is a highly urbanised area of the UK, which includes the city
7 of Birmingham with a population of 1.1 million, and has a notable UHI (Bassett et al., 2016;
8 Heaviside et al., 2015; Tomlinson et al., 2012). A health impact assessment for the heatwave of
9 2003 based on high resolution meteorological modelling suggested that in the West Midlands,
10 around half of the heat-related mortality during the heatwave could be attributed to the UHI
11 (Heaviside et al., 2016). The UHI intensity is often defined as the difference in temperature
12 between urban and rural areas, and can be quantified by comparing ambient air temperature
13 observations at a location in the centre of an urban area, and at a location in surrounding rural
14 areas (Bassett et al., 2016; Hatchett et al., 2016; Ketterer and Matzarakis, 2014; Kim and Baik, 2002;
15 Oke, 1973, 1982), or from satellite measurements (Azevedo et al., 2016; Benz et al., 2017; Du et al.,
16 2016). However, observation stations are limited in number, are often not sited within urban
17 centres, and may only cover certain time periods, while satellite measurements record land surface
18 temperature (rather than air temperature), and are often temporally limited and may have missing
19 data if it is cloudy. The use of meteorological computer simulations makes it possible to investigate
20 spatial variations in temperature across urban areas, and to quantify the UHI intensity, by
21 comparing temperatures simulated both with and without urban surfaces such as buildings and
22 roads.

23 1.3. Mapping spatial variation in heat-exposure and risk

24 Heat exposure for urban populations will vary across urbanised areas, due to spatial variations in
25 physical infrastructure that influences the UHI. Susceptibility to health risks associated with heat
26 exposure is also influenced by other factors, including population age, housing type, socio-
27 economic factors, pre-existing health conditions, and location within the UHI (Taylor et al., 2015;
28 Wolf and McGregor, 2013). It is therefore important in terms of health protection to understand
29 the pattern of risk across a region, which may help target resources to reduce heat risk in the most
30 vulnerable areas, since it is possible that environmental risks and vulnerable population groups are
31 co-located within urban areas.

32 A number of studies have investigated heat risk across the Greater London area. Wolf and
33 McGregor (2013) developed a Heat Vulnerability Index (HVI) for London based on principal
34 component analysis of socio-demographic factors relating to heat vulnerability, combined with land
35 surface temperatures (derived from a satellite measurement), finding clustering of high
36 vulnerability in the east and central areas of the city. Heat risk has also been mapped across London
37 using a building physics model and monitored weather data, together with information on
38 modelled UHI, housing type and population age, finding that building type and UHI have a
39 significant influence on the distribution of risk across the city for summer 2006 (Taylor et al., 2015).

1 Building fabric types and characteristics, and thus thermal properties, will depend on the age of the
2 building, and may be an important modifier for thermal comfort and energy efficiency, in addition
3 to behavioural aspects of building occupancy that can also modify heat exposure risk (Vardoulakis
4 et al., 2015). An existing spatial heat risk assessment of Birmingham combined information derived
5 from credit reference agencies on groups such as the elderly, those with ill health, high population
6 density, and high-rise living, finding that population sub-groups with ill health, and who reside in
7 flats were located in the overall warmest and therefore highest heat risk areas of Birmingham
8 (Tomlinson et al., 2011). This study used remote satellite sensing of the land surface temperature at
9 high spatial resolution (1 km), although only a single snapshot over one night during a heatwave is
10 used, and as such, does not fully represent the range of temperatures that population is exposed to
11 during the heatwave period. Similar studies in large urban areas worldwide have found spatial
12 overlap of sensitive populations and inequity in exposure to the UHI, according to age, occupation,
13 income, and other socio-demographic indicators, and that mapping can help target efforts to
14 reduce heat risk (e.g. via planning the location of parks, cool or green roofs, and social care efforts)
15 (Mitchell and Chakraborty, 2015; Weber et al., 2015; Wong et al., 2016).

16 While mapping of risks can be a useful tool for raising public awareness of risks, it is not clear if
17 producing maps in this way leads to policy or mitigation actions, possibly due to uncertainty in
18 relation to policy and decision making that are difficult to address in such studies (Wolf et al.,
19 2015). There is an increasing amount of temperature data available from satellite measurements,
20 but this dataset only gives the temperature of the surface the satellite detects (e.g. the ground, tree
21 tops or building roofs and walls), rather than air temperature which is more relevant for health,
22 while the relationship between ground and air temperature is difficult to quantify. We address
23 these issues by using simulated temperatures and quantifying heat exposure due to the UHI for
24 populations which could be seen to be at risk.

25 1.4. Centres for health and social care

26 Care homes and hospitals are places where sensitive populations may reside. During the 2003
27 heatwave across Europe, of the recorded the recorded mortality among the under 75s in the UK,
28 more of the excess deaths were distributed in residential and nursing homes than would have been
29 expected, and among the over 75s, more of the excess deaths were distributed in hospitals and
30 nursing homes (Kovats et al., 2006). In these settings there may be issues surrounding dependency
31 on care-givers in nursing and residential homes, and the impact this may have on patients' and
32 residents' behaviour in responding to environmental changes (e.g. disempowerment or loss of
33 autonomy), as well as availability of assistance for daily living tasks in institutions (Belmin et al.,
34 2007; Brown and Walker, 2008). Reports suggest care schemes have a 'culture of warmth', a
35 perception that the elderly are vulnerable only to cold (not excessive heat), and that design for
36 overheating is rare, with low prioritisation for future climate change and overheating (Gupta et al.,
37 2016).

38 Those in prisons or custodial facilities are not able to directly access health care services, and
39 effective ways to reduce exposure to heat may be limited. While there are few studies examining

1 heat risk in prisons, lawsuits were successfully brought against prisons in Texas and Louisiana in the
2 US, where inmates had died or suffered as a result of heat exposure (Human Rights Clinic, 2015;
3 The Promise of Justice Initiative, 2013). The population in the UK is ageing, as is the prison
4 population. Not only has the prison population in the UK increased from 56,000 to over 85,000 in
5 the last ten years, the number of those aged 60 and over in custody are the fastest growing group,
6 increasing by 120% from 2002-2013 (House of Commons, 2013; Offender management statistics
7 quarterly, 2016). Other factors such as drug use, as well as prevalence of mental health conditions
8 amongst those in custody may also contribute to health risk from exposure to heat.

9 1.5. Social and demographic factors

10 As well as the elderly, babies and young children are also vulnerable to effects associated with heat
11 exposure (PHE, 2015). Studies have shown that warmer classrooms (25°C compared to 20°C) are
12 detrimental to educational attainment (Wargocki and Wyon, 2007), and school children feel
13 lethargic when temperature and relative humidity are high (Salthammer et al., 2016). Urbanisation
14 and climate change adversely affect thermal comfort and air quality in schools, and the impact of
15 such exposure may go beyond discomfort or ill health, leading to a lifelong burden of disease
16 (Salthammer et al., 2016).

17 Relationships between heat-related mortality and socio-economic and demographic factors vary
18 regionally across the globe. Relationships have been found in some regions between heat-related
19 mortality and factors such as age, gender, those classed as urban-poor, and areas with a lack of
20 high-income earners (with income believed to be a good proxy for access to air conditioning),
21 however, these are often not consistent between countries, in some cases showing no clear
22 relationship for other socio-economic indicators (Hondula and Barnett, 2014; Johnson and Wilson,
23 2009; Yu et al., 2010). In the UK, regional long time-series analysis showed the strongest heat-
24 mortality effects were in London, and the strongest cold effects in the East of England. A stronger
25 heat effect was found for those living in urban areas, with no difference for cold effects. Indices of
26 deprivation were not found to be a modifier for heat effects, and only slightly for cold effects in
27 some rural areas, though this is influenced by how well individual circumstances are represented by
28 area-level indicators (Hajat et al., 2007).

29 The World Health Organization (WHO) identified common heat risk factors including being elderly,
30 having pre-existing cardiovascular or respiratory disease, living alone, working outdoors or being
31 involved in heavy labour indoors close to industrial heat sources (World Health Organization, 2015).
32 In some places, gender, nature of dwelling (e.g. hospital or care home), being urban and poor, and
33 having certain medical conditions such as diabetes may also be linked with greater temperature-
34 health effects, though causality is complex to determine as certain types of factors may interact
35 with other determinants of health, as well as access to health-care systems (World Health
36 Organization, 2015). Some indicators of socioeconomic status may be associated with heat-related
37 health effects, though inconsistencies exist between studies, with different associations reported
38 between countries, regions and cities within. There is also some evidence that temperature

1 modifies the health effects of some air pollutants, such as ozone (Jerrett et al., 2009; World Health
2 Organization, 2015).

3 1.6 Summary and aims

4 We have identified a wide range of factors that are likely to influence the risk of heat-related health
5 effects, including housing type, population age, deprivation indices, and those residing in care and
6 health facilities. People who experience multiple risk factors may be more vulnerable during
7 periods of hot weather. An analysis of the spatial distribution of multiple risk factors across a region
8 may reveal co-location of such factors, and identify places when strategies to mitigate heat risk
9 might be most effective.

10 We address these issues as part of an urban case study for two recent significant heatwave events.
11 We investigate firstly variations in environmental risk factors across the city (temperature, UHI
12 intensity, and thermal comfort indices), and secondly, distribution of other factors which may relate
13 to vulnerability from environmental risks (age, housing type, and deprivation index). A spatial
14 analysis allows us to determine whether these sets of risks are co-located within our study city of
15 Birmingham and the West Midlands region of the UK. Thirdly, we investigate the position of specific
16 locations where sensitive populations are likely to be based, such as hospitals, care-homes, schools,
17 and prisons, with respect to the intensity and position of the UHI, with the hypothesis that since
18 these types of institutions are often situated in urban centres, populations may be at risk from
19 exposure to high temperatures as a consequence of the effects of the UHI.

20

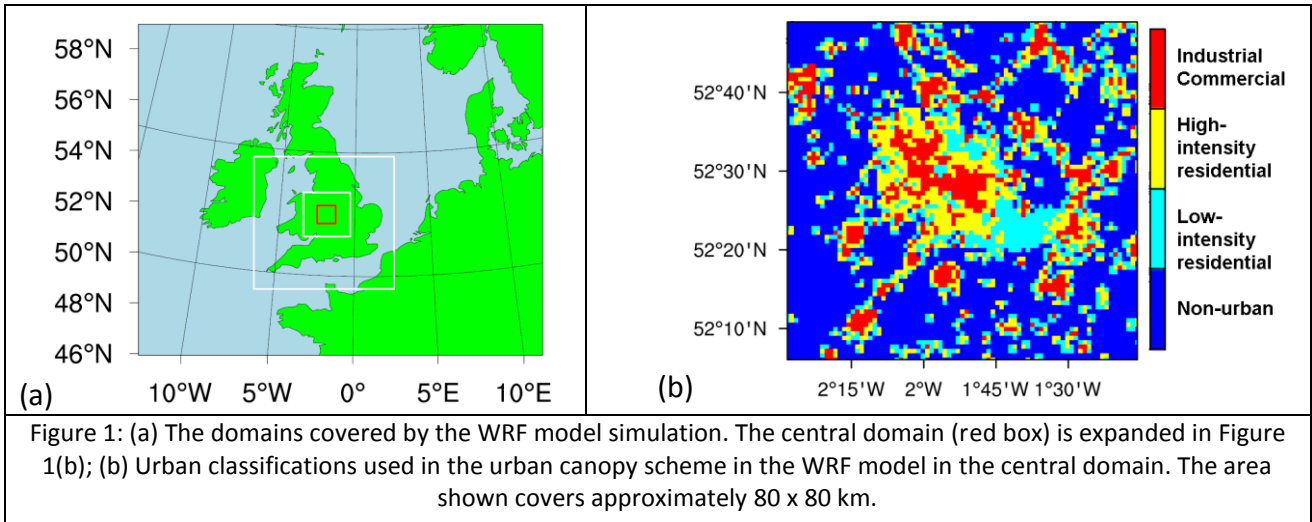
21 **2. METHODS AND DATA**

22 In this study we first modelled the ambient air temperature at a height of 2 metres across the West
23 Midlands, and quantified the UHI intensity across the region for the heatwave periods (August 2003
24 and July 2006) using a mesoscale meteorological model. Using GIS techniques we then extracted
25 (from the modelled data) and analysed the ambient temperatures that correspond to different risk
26 factors such as population age, dwelling type, and deprivation indices.

27 2.1 Modelling temperature

28 The Weather Research and Forecasting (WRF) model is a regional weather model that can be run at
29 high resolution (1 km) to simulate the meteorology across a region (Chen et al., 2011). We used the
30 WRF model with four nested domains (Figure 1a) each with grid resolutions of 36 km, 12 km, 3 km,
31 and 1 km in the smallest (central) domain, with feedback of variables from smaller grids to parent
32 grids. The model time-step was 180, 60, 20 and 5 s for the four domains, respectively, with output
33 every hour. Initial and lateral boundary meteorological conditions were provided by the European
34 Centre for Medium-range Weather Forecasts (ECMWF) ERA-interim reanalysis (Dee et al., 2011) at
35 a spatial resolution of 0.5° every 6 h. There were 39 pressure levels above the surface to 1 hPa. We
36 used an urban canopy scheme, Building Energy Parameterisation (BEP), which models the effect of

1 buildings on energy and momentum fluxes inside and immediately above the urban street canyons
 2 (Heaviside et al., 2015; Martilli et al., 2002). Information on building and road properties (e.g.
 3 building height, street canyon width, material properties such as albedo, thermal conductivity and
 4 heat capacity) is included for three urban categories: Industrial/commercial, high-intensity
 5 residential, and low-intensity residential across the West Midlands region (Figure 1b). Details of
 6 parameters used for each urban category are given in Table 1a. Land-surface data used as an input
 7 to WRF for all domains were based on the US Geological Survey (USGS) 24-category land-use data,
 8 and for the inner domain we used two local datasets to generate the urban categories. We used the
 9 Noah Land Surface Model, a relatively complex community model, which is often coupled with an
 10 urban canopy scheme, and has four layers of soil moisture and temperature (Tewari et al., 2004).



11
 12

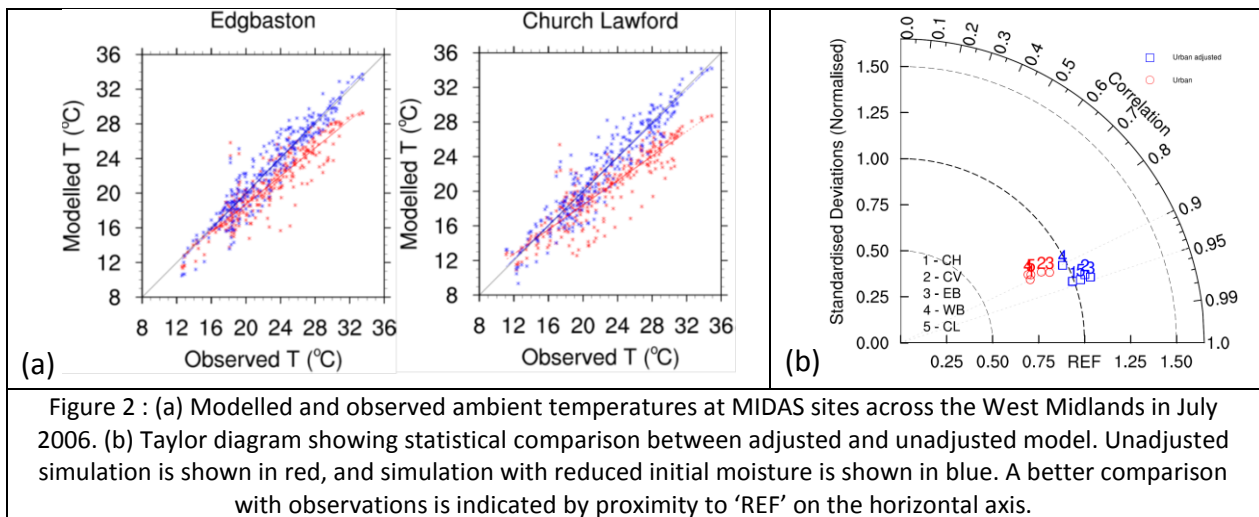
Table 1 : (a) Details of urban categories used in BEP. (b) General WRF model setup details.

(a)					
Category		1: Industrial/commercial	2: High-intensity residential	3: Low-intensity residential	
Albedo	Roof	0.1989	0.1997	0.2027	
	Wall	0.1989	0.1997	0.2027	
	Ground	0.1989	0.1997	0.2027	
Surface emissivity	Roof	0.9239	0.9274	0.9292	
	Wall	0.9239	0.9274	0.9292	
	Ground	0.9239	0.9274	0.9292	
Average building height		25 m	15 m	10 m	
(b)					
Model setting	Option	Reference			
Long wave radiation	Rapid Radiative Transfer Model (RRTM)	Mlawer et al. (1997)			
Short-wave radiation	Dudhia scheme	Dudhia (1989)			
Boundary layer physics	Bougeault–Lacarrere (designed for use with BPE urban scheme)	Bougeault and Lacarrere (1989)			
Urban physics	BEP urban scheme	Martilli et al. (2002)			

13

14 The model has been previously run for this region for the August 2003 heatwave; details of the
 15 model simulation and validation are detailed in Heaviside et al. (2015). We have extended the

1 analysis by re-running the 2003 heatwave using an updated version of WRF (v3.6.1), and including a
 2 further simulation run during a heatwave period in July 2006. In order to test performance, the
 3 model output is compared with observations from MIDAS observational weather stations across
 4 the West Midlands (Met Office, 2012). During heatwave periods, air temperature becomes more
 5 sensitive to surface moisture properties, which can be difficult for the model to capture. Soil
 6 moisture was adjusted in the model to better account for the unusually dry conditions, which led to
 7 improvements in the model performance (Figure 2 and Table 2).



8 Table 2 : Statistical comparison between observed air temperature, and modelled temperatures (with soil moisture
 9 adjustment).

	Edgbaston		Coventry		Coleshill		Church Lawford	
	Observed	Modelled	Observed	Modelled	Observed	Modelled	Observed	Modelled
Mean (°C)	22.54	22.59	22.31	22.64	22.12	22.44	22.32	22.24
Standard deviation (°C)	4.54	4.95	4.78	5.11	5.19	5.15	5.21	5.40
RMSD (°C)	-	1.62	-	1.81	-	1.79	-	1.79
Correlation	-	0.94	-	0.94	-	0.94	-	0.94

10 We ran the model for two heatwave periods (2nd – 10th August 2003, and 16th – 27th July 2006), and
 11 in order to quantify the UHI intensity, two simulations were run for each heatwave period. An
 12 'urban' simulation was run as described above, using the urban categories shown in Figure 1b, and
 13 is intended to represent the urban morphology of Birmingham and the West Midlands. The
 14 simulation is then run again, but with urban land cover replaced by rural cropland and pasture in
 15 the innermost domain, as a theoretical 'rural' case. By comparing results between the 'urban' and
 16 'rural' simulations, the UHI intensity can be quantified.

17 The temperature that people experience or 'feel' can be influenced by a number of factors such as
 18 humidity, wind speed, exposure to direct solar radiation, and the amount of clothing they are
 19 wearing (Höppe, 1999; Steadman, 1984). National weather services sometimes provide a 'heat
 20 index' or 'apparent temperature' as part of weather forecasts during periods of warmer weather, to
 21 account for the effect of humidity, with assumptions about human body mass, height, clothing,
 22 amount of physical activity, sunlight and ultraviolet radiation exposure, and the wind speed. The
 23 heat index is calculated from temperature and relative humidity following the method of the NOAA

1 Weather Prediction Center (www.wpc.ncep.noaa.gov/html/heatindex_equation.shtml). This
2 calculation is a refinement of a result obtained by multiple regression detailed in National Weather
3 Service (NWS) Technical Attachment (SR 90-23). Accounting for the humidity only significantly
4 influences the heat index above about 26°C, and this calculation is not valid for extremes of
5 temperature or humidity (Steadman, 1984).

6 2.2 Population and built environment characteristics

7 Population data are taken from the National Population Database (2015) gridded at 100 m
8 resolution, which gives total population at each grid point. Information on age groups is available at
9 Output Area¹ (OA) level from the most recent census (2011), and attached to each 100 m
10 population point based on which OA the point falls within. The information is then summed across
11 each WRF 1 km grid box.

12 Data on housing type was obtained at Lower Super Output Area² (LSOA) level from the most recent
13 census (2011, available from infuse.ukdataservice.ac.uk). Data is available on the number of
14 dwellings of each type within each LSOA. The number of dwellings of each housing type in each
15 WRF model grid box is calculated by summing the fractions of each LSOA that intersect with each
16 grid box, with housing assumed to be distributed evenly across each LSOA. This is combined with
17 the 2 m air temperature simulated in the model during the heatwaves of 2003 and 2006, to
18 estimate the average ambient temperature that different housing types across the West Midlands
19 are co-located with. Information on housing type was available (e.g. detached, terrace, flat, etc.)
20 but information on housing age was not recorded spatially.

21 The locations of hospitals, care homes, child care centres, schools, and prisons were considered
22 where 'sensitive populations' are more likely to reside. The National Population Database provides
23 information on these locations as they may have high densities of residents, many of whom may
24 not be able to protect themselves (others have a duty of care towards them). People at these
25 locations may be more vulnerable to harm and potentially harder to evacuate in an emergency
26 situation. The temperature at the location of each of the centres of interest is extracted from the
27 (hourly) model output using bilinear interpolation to the nearest modelled grid points. The mean
28 temperature anomaly for each location is calculated by taking the mean temperature at the
29 selected location over the heatwave period, and subtracting the mean temperature across the
30 entire domain for the same period.

31 The English Indices of Multiple Deprivation (IMD) scores and ranks are produced periodically by the
32 Department for Communities and Local Government, and are the official measure of relative
33 deprivation for small areas (LSOA based on the 2011 census) in England. The IMD brings together
34 37 different indicators which cover specific aspects or dimensions of deprivation, such as income,

¹ Output Areas are the lowest geographical level at which census estimates are provided. There are 181,408 Output Areas in England and Wales. The average population per OA is 309.

² Lower Super Output Areas have an average of ~1500 residents and 650 households. Measures of proximity (to give a reasonably compact shape) and social homogeneity (to encourage areas of similar social background) are also included. There are 34,753 LSOAs in England and Wales. <http://neighbourhood.statistics.gov.uk/>

1 employment, health and disability, education, skills and training, barriers to housing and services,
 2 living environment, and crime, which are then weighted and combined to create the overall IMD
 3 scores for each LSOA (ONS, 2007). For this work, IMDs for 2007 were used, as this is the closest
 4 available year to those modelled using WRF. The IMD score at LSOA level is attached to each 100 m
 5 population grid point, and then these are used to calculate population-weighted IMD scores for
 6 each WRF 1 km grid-box. Once the IMD scores for each WRF grid box are calculated, these are then
 7 associated with the temperatures from the WRF model, and ranked relative to each other, from
 8 least- to most-deprived. The data is then split into population deciles (in order of least to most
 9 deprived), and the associated temperatures plotted.

10

11 **3. RESULTS**

12 3.1 Environmental risks

13 3.1.1 Temperature/Heat index.

14 Figure 3a shows the modelled mean 2 m air temperature from 2nd – 10th August 2003, and Figure
 15 3b shows the same for 16th – 27th July 2006. The observed average and the overall minimum
 16 temperatures are higher by 1.3°C in 2006 compared with 2003. Average daily maximum ambient
 17 temperatures are similar (difference of 0.3°C), though temperatures reached at least 30°C on more
 18 days in 2006 than 2003 (see Figure S1 in supplementary material). Comparison of Figure 3 with the
 19 land use in Figure 1b shows that urban areas are generally warmer than the surrounding rural areas
 20 in the West Midlands modelled domain.

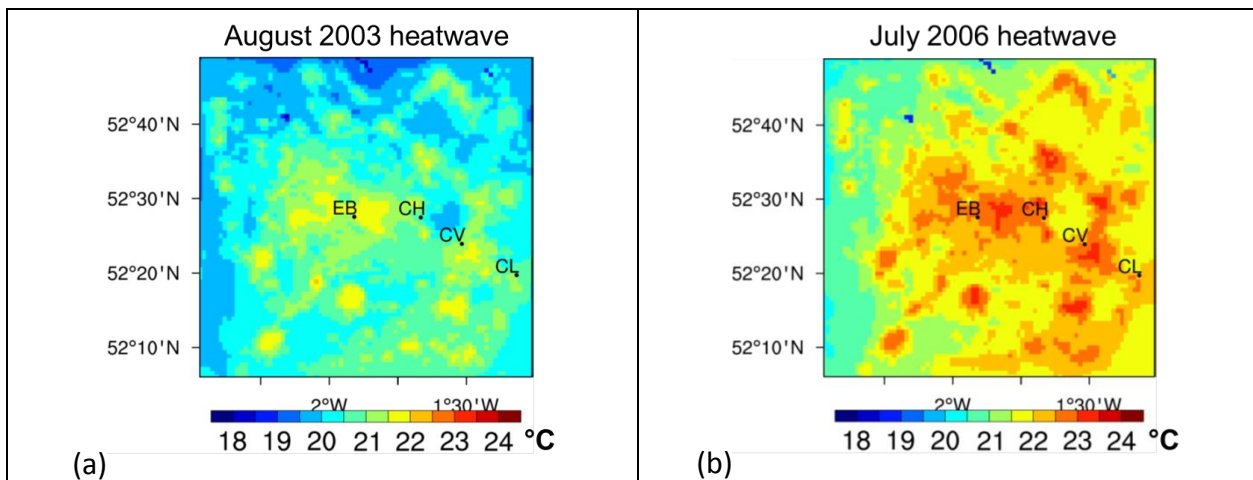


Figure 3: Mean 2 m air temperatures simulated across the West Midlands during (a) heatwave period from 2nd – 10th August 2003, and (b) for the heatwave period during 16th – 27th July 2006. Lettered points show monitoring stations used for model validation. EB=Edgbaston; CH=Coleshill; CV=Coventry; CL=Church Lawford.

21

1 The average calculated heat index for each of the heatwave periods is shown in supplementary
 2 Figure S2. The pattern and magnitude are very similar to the 2 m temperatures shown in Figure 3.
 3 Additional discussion of the heat index may be found in the supplementary material.

4 3.1.2. Urban Heat Island

5 The average UHI intensity across the whole period (defined as the difference in 2 m temperature
 6 between a simulation with urban land cover and a simulation with rural land cover) for both
 7 heatwave periods is shown in Figure 4. Statistics for the two heatwaves are shown in Table 2.

8 Table 2: Statistics for modelled temperature and the UHI intensity for the two heatwave periods in August
 9 2003 and July 2006.

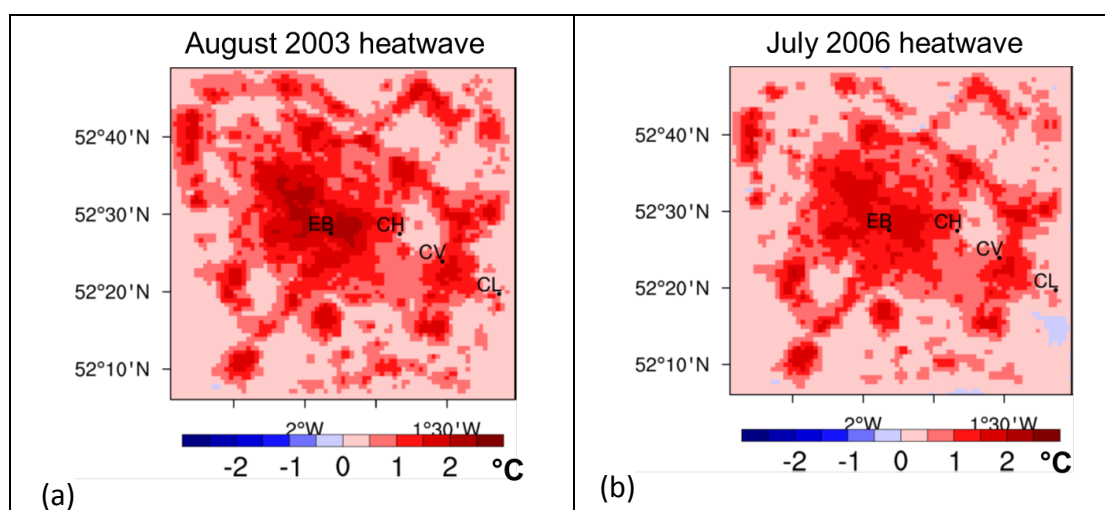
		Average temp (°C)	Average UHI (°C)	Daytime [†] average UHI (°C)	Nighttime [†] average UHI (°C)	Max UHI (°C)
Aug 2003	Regional [‡]	20.5	+0.7	+0.5	+1.0	+6.1 (5pm 10 th ; 11pm 5 th ; 9pm 9 th)
	City centre [*]	21.7	+2.2	+2.0	+2.7	
July 2006	Regional [‡]	21.7	+0.6	+0.1	+1.2	+9.6 (11pm 17 th)
	City centre [*]	23.0	+2.0	+1.0	+3.1	

[†]Daytime is defined as 08:00 – 19:59; Nighttime is 20:00 – 07:59

[‡] Regional is the whole area shown in Figure 1a. ^{*} City centre is a point in the centre of Birmingham city.

10

11 While higher average temperatures were reached across the domain during the 2006 heatwave
 12 than the 2003 heatwave (Figure 3), the magnitude and spatial distribution of the UHI intensity
 13 remains remarkably similar (Figure 4). There are broad similarities in the spatial and temporal
 14 diurnal patterns of the UHI intensity between the two heatwaves (Figure 4, Figure S2), although
 15 some localised differences exist. The average UHI intensity in the city centre was slightly higher in
 16 2003 (+2.2°C in 2003 compared with +2.0°C in 2006), but the UHI intensity at night time was larger
 17 in 2006 (+3.1°C in 2006 compared with +2.5°C in 2003).



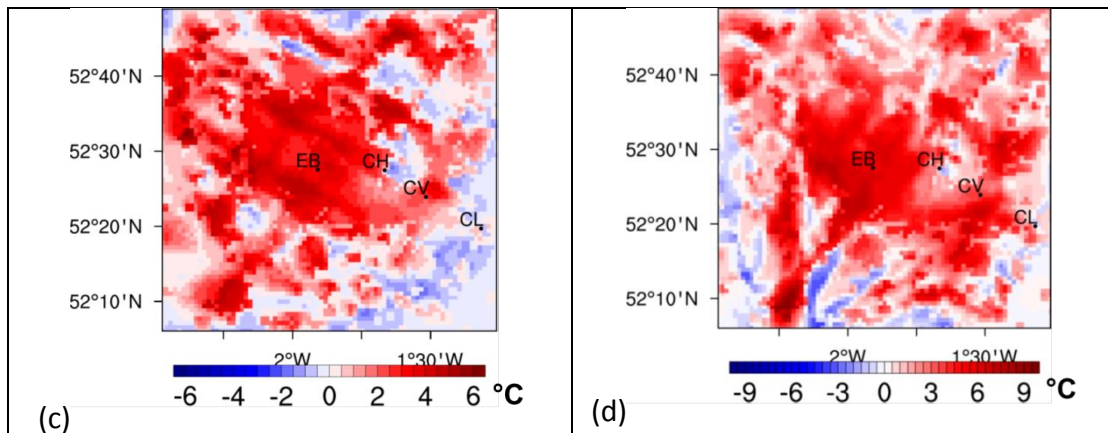


Figure 4: Mean UHI intensity for the whole time-period across the West Midlands (a) 2nd – 10th August 2003, and (b) 16th – 27th July 2006. Snapshots of high UHI intensity for each period are shown in (c) 11pm 5th August 2003, and (d) 11pm 17th July 2006. Lettered points show monitoring stations used for model validation. EB=Edgbaston; CH=Coleshill; CV=Coventry; CL=Church Lawford. Note that the colour scales are not all equal.

1

2 By combining the data from the two heatwave periods, we have a larger dataset available to
 3 analyse the distribution of temperatures, and the UHI effects typical during heatwaves across the
 4 region. Figure 5 shows the spatial distribution of the UHI intensity across the West Midlands,
 5 determined from both the August 2003 and July 2006 heatwaves combined, and illustrates the
 6 more intense UHI effect at night time compared with during the day.

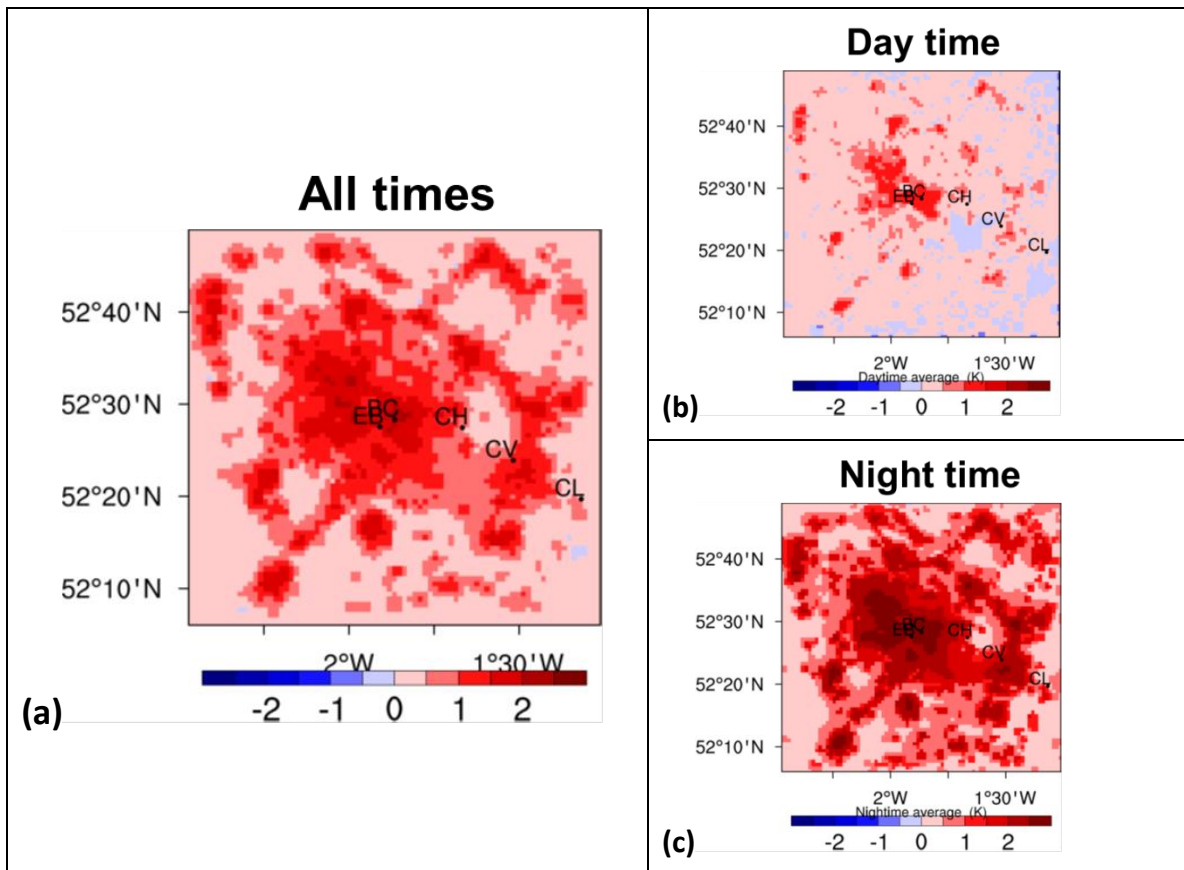


Figure 5: (a) Average UHI intensity during heatwave periods (2-10 Aug 2003 and 16-27 July 2006) across the West Midlands; Averages over (b) daytime and (c) night time. Average UHI intensity was +2.1°C (+1.4°C in daytime, +2.9°C at night time).

1

2 The heat index and the difference in heat index between urban and rural simulations are shown in
 3 supplementary material (Figures S2 and S3), and very similar patterns to the UHI are shown. The
 4 specific humidity (i.e. water vapour mixing ratio) is lower in the urban simulation (supplementary
 5 Figure S4) due to the presence of urban surfaces replacing vegetated ones that would otherwise
 6 provide a supply of moisture to the surrounding air. Overall the average impact of urban surfaces
 7 on 2 m temperature and the average impact on the heat index are almost identical (Figure 5 and
 8 Figure S3).

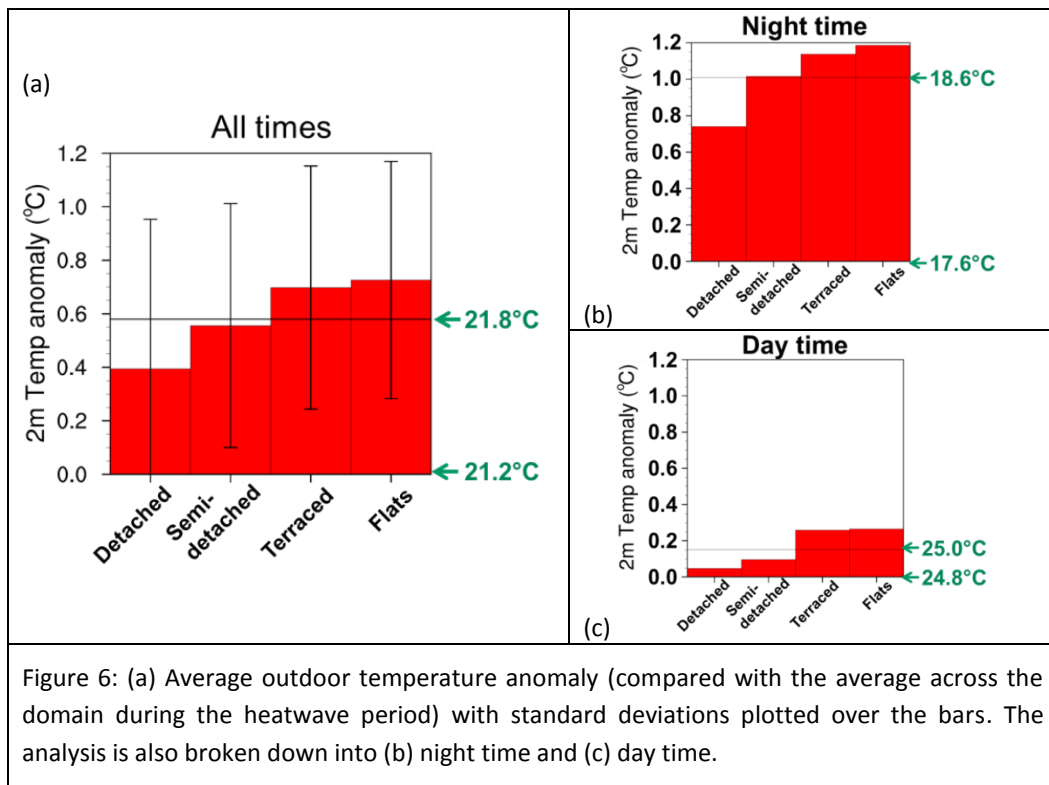
9

10 3.2. Social factors

11 3.2.1 – Housing

12 Buildings are an important modifier to population exposure to heat, with different types of housing
 13 being more or less susceptible to overheating, for example top-floor flats are more likely to
 14 overheat than detached houses (Beizaee et al., 2013; Symonds et al., 2017; Taylor et al., 2015).
 15 Figure 6 shows the average 2 m air temperature that different housing types across the West

1 Midlands are co-located with during heatwave periods, compared to the average temperature
 2 across the whole region. The anomaly represents the difference from the average temperature
 3 across the entire region for the time period considered (this temperature, representing zero
 4 anomaly, is labelled at the base of the vertical axis on the right). The average temperature across all
 5 housing types in the region is shown by the horizontal bar (again with absolute value labelled at the
 6 right axis). Detached houses, which tend to be located towards more suburban areas, are co-
 7 located with ambient temperatures almost 0.2°C lower than the average for all housing types. By
 8 contrast, terraced houses and flats are co-located with ambient temperatures over 0.1°C higher
 9 than the average for all housing types in the region, and 0.6°C warmer than the whole domain
 10 average temperature. Our analysis shows that housing types which are more likely to overheat (e.g.
 11 flats) are often located in the warmest parts of the city, and the effects are much larger at night
 12 (Figure 6b). The differences between ambient temperatures for each housing category are all
 13 statistically significant ($p < 0.05$; see supplementary material for details). While the temperature
 14 variation between different housing types is less than 1°C, it should be noted that the average UHI
 15 intensity for the region was about 0.6 to 0.7°C (and just over 2°C in the centre of the urban area)
 16 during heatwaves.

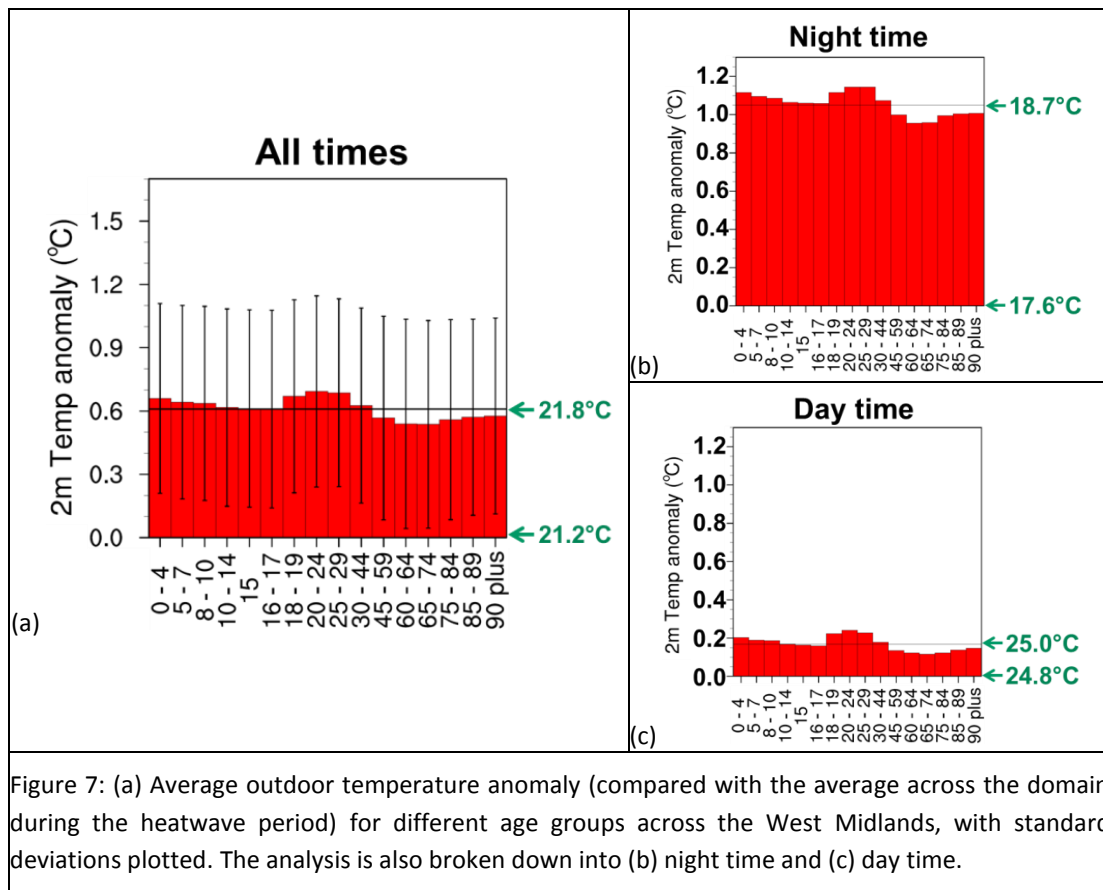


17

18 3.2.2 – Population age

19 Figure 7 shows the average outdoor temperature anomalies different age groups are exposed to,
 20 based on residential address. The anomaly represents the difference from the average temperature
 21 across the entire region for the time period considered (this temperature, representing zero
 22 anomaly, is labelled at the base of the vertical axis on the right). The average across all age groups

1 is shown by the horizontal bar (again with absolute value labelled at the right axis). The whole West
 2 Midlands population is exposed to temperatures about +0.6°C higher than the regional average (as
 3 populations reside in more urbanised areas) (Fig. 9a). Young adults and the very young are exposed
 4 to slightly higher temperatures than the population average (e.g. 20-24 year olds reside in areas
 5 +0.7°C warmer than the regional average of +0.6°C), while the elderly are exposed to slightly lower
 6 temperatures than the population average (e.g. 65-75 year olds reside in areas +0.5°C). During the
 7 daytime, there is only a modest difference in ambient temperatures exposure in comparison to the
 8 regional average; however at night time, population-weighted temperatures are over 1°C higher
 9 than the regional average (Figure 7b,c). It should be noted that these figures are based on
 10 residential population, so those present in health and care centres are not considered here. Overall,
 11 the differences in exposure to ambient temperatures for different population groups are modest,
 12 likely a reflection that population age groups are less heterogeneously distributed across this
 13 region. The differences between ambient temperatures for each age group are all statistically
 14 significant ($p < 0.05$; see supplementary material for details), with the exception of the 15 and the
 15 16-17 year old age groups ($p = 0.25$), the 60-64 and 65-69 year old age groups ($p = 0.069$), and the 85-
 16 89 and 90+ year old age groups ($p = 0.055$).



17

18 3.2.3 – Deprivation.

1 Figure 8 shows the average ambient temperature exposure for increasingly deprived population
 2 deciles, calculated from population weighted scores across the domain ranked relative to each
 3 other. The anomaly represents the difference from the average temperature across the entire
 4 region for the time period considered (i.e. day, night, or all times). The horizontal line shows the
 5 population weighted temperature for the time period. The most deprived decile of population
 6 across the region is exposed to temperatures +1.0°C higher than the average for the region (+0.5°C
 7 during the day, and +1.5°C at night). The most deprived decile of population for the region
 8 experiences temperatures consistently higher than the average for the region, even during the
 9 daytime (each decile represents ~0.5 million people). The overall deprivation scores for all LSOAs in
 10 England range from 0.37 to 85.46. For comparison, the deprivation scores calculated for each decile
 11 in Figure 8 range from 6.08 to 56.17, placing them around the 12% and 96% most deprived relative
 12 to England. The differences between ambient temperatures for each deprivation decile are all
 13 statistically significant ($p < 0.05$; see supplementary material for details), with the exception of
 14 deciles 4 and 5 ($p = 0.989$).

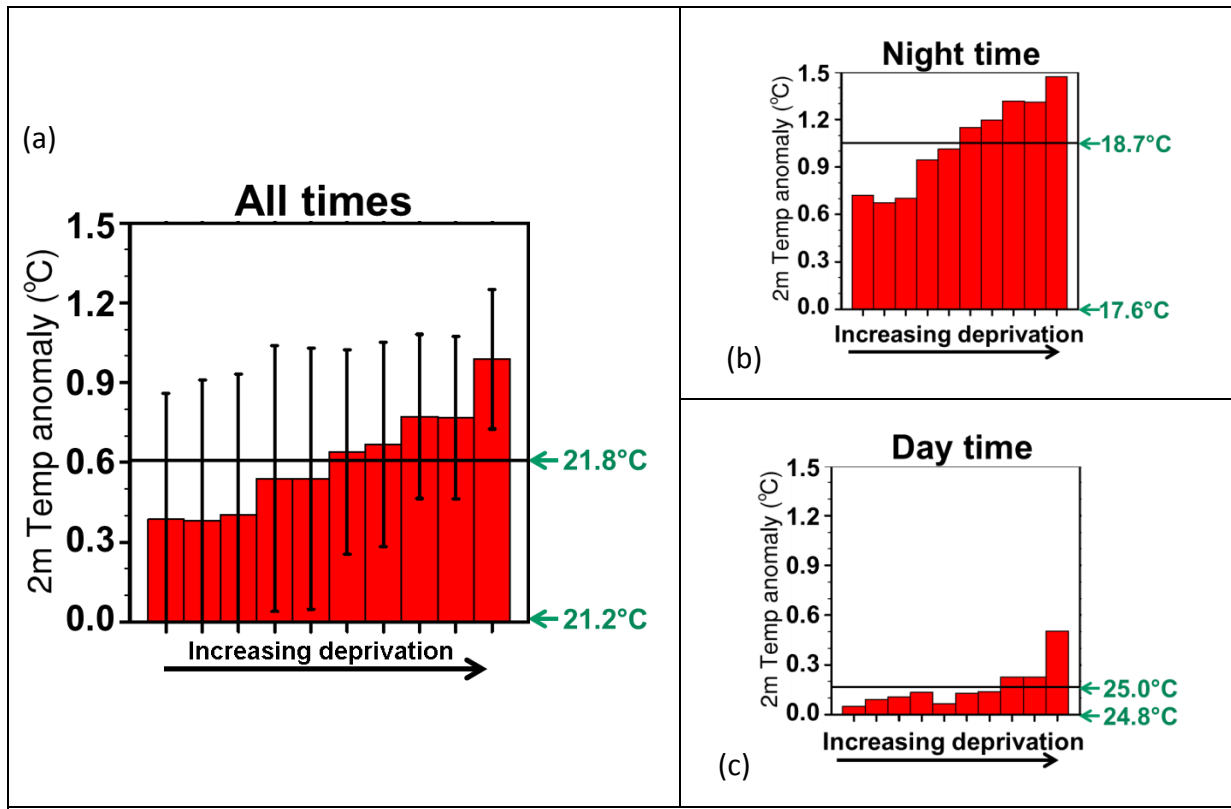


Figure 8: (a) Average outdoor temperature anomaly (compared with the average across the domain during the heatwave period) for population deciles ranked by deprivation across the West Midlands, with standard deviations plotted. The analysis is also broken down into (b) night time and (c) day time.

15

16

17 3.3 Location based assessment of vulnerability from heat.

1 Sensitive receptors such as hospitals, care homes, child care facilities, schools, and prisons tend to
2 be located in the most highly urbanised areas of the region, with the exception of prisons which are
3 often located on the outskirts of the city. The distribution of temperature anomalies for each
4 location type is shown in Figure 9. The anomalies are based on the number of receptors (i.e.
5 buildings), and not the population at each location, as this will fluctuate. The majority of hospitals,
6 care homes, schools and child care centres are located in areas warmer than the domain average
7 (94% of hospitals, 90% of care homes, 87% of schools, and 88% of child care centres). There are
8 seven prisons located within the study area, with only two of these being warmer on average
9 (Figure 9e).

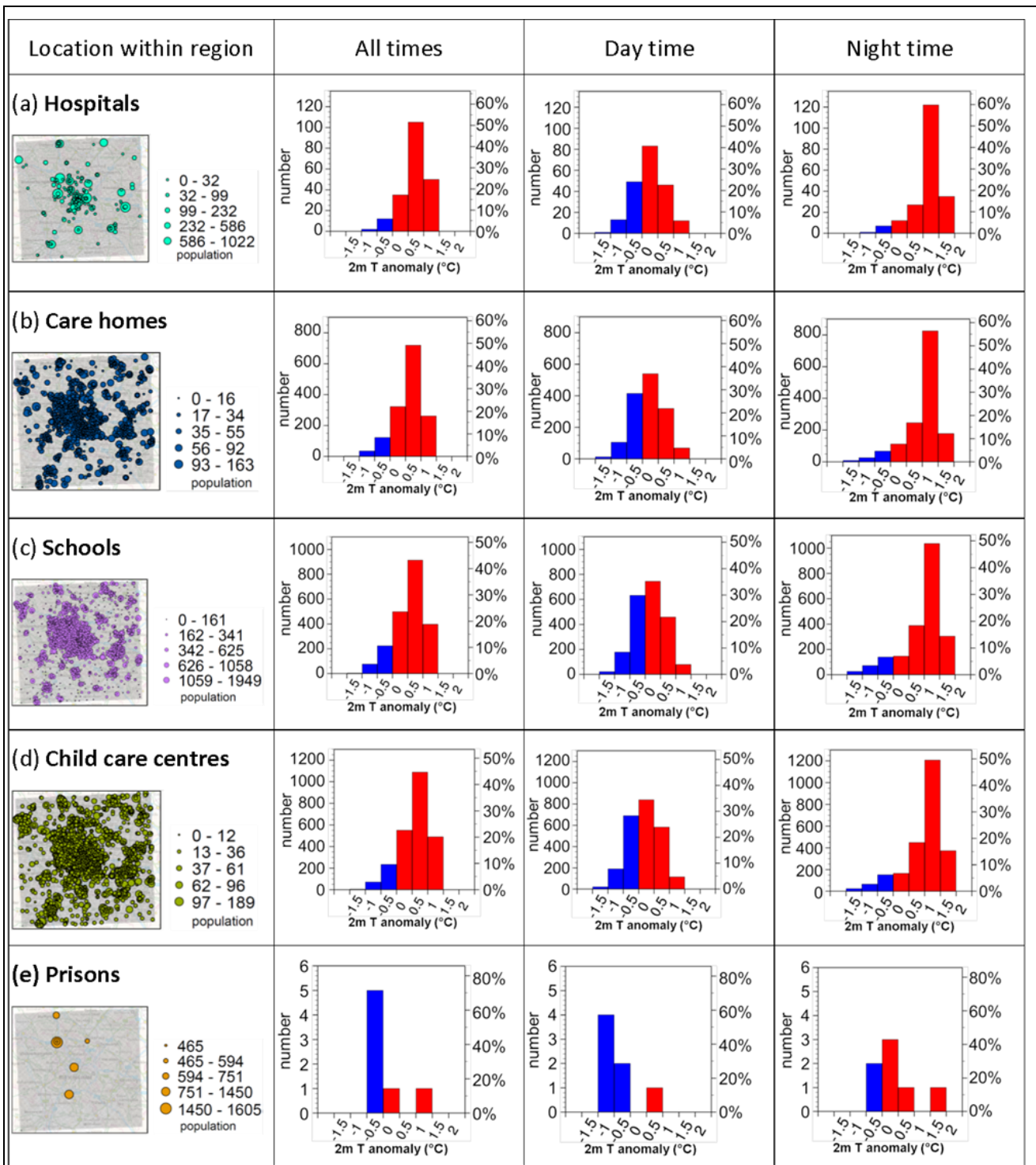


Figure 9 : Distribution of average ambient 2 m temperature at (a) hospitals, (b) care homes, (c) schools, (d) child care centres, and (e) prisons across the West Midlands. The first column shows the distribution of these locations across the West Midlands, and the next three columns represent the average anomaly averaged first across all times of day, and then broken down into average daytime anomaly (8am – 8pm), and average night time anomaly (8pm – 8am). The average temperature across the domain (used as the reference temperature) is 21.8°C. Red = positive anomaly (warmer); Blue = negative (colder).

1

2

1 4. DISCUSSION

2 In this study we used hourly ambient temperature data at high spatial resolution (1 km) across a
3 densely populated region of the UK, capturing temperature variation across the period of two
4 different heatwave episodes. We employ environmental modelling techniques to examine human
5 health in relation to heat exposure during heatwaves, which will become increasingly important in
6 the future as climate change is projected to increase heat-health impacts. Previous studies have
7 examined the spatial distribution of vulnerability to heat risk across a region, often using ambient
8 temperatures that are time-varying but have no spatial variation, or that are well represented
9 spatially but only for a single or limited time frame (Taylor et al., 2015; Tomlinson et al., 2011; Wolf
10 and McGregor, 2013). By using well-validated meteorological modelling techniques, we have
11 generated an ambient temperature dataset, based on modelled output, at high temporal and
12 spatial resolution from which to calculate ambient temperatures exposure co-located with various
13 risk factors that relate to and influence heat-related health effects. These include population-
14 weighted temperature exposure and the relationship between UHI intensity and demographic
15 factors such as age group. Previous studies have mapped such risks, but our work extends this
16 analysis by calculating the ambient temperature weighted according to distributions of different
17 housing types, population (including age), and deprivation score, all being factors that influence
18 heat-health effects. We have also broken down the analysis by day and night; while the whole
19 region is warmest during the daytime (and urban areas are still warmer than rural ones at this
20 time), the spatial variation in temperature across the region is much greater at night, due to the
21 influence of the UHI (Figure 5). While there is no clear indicator of which temperature metric is
22 most strongly correlated with mortality, and there is variation between countries and cities (Davis
23 et al., 2016), high mortality ratios have been associated with high night time land surface
24 temperatures during the August 2003 heatwave in Paris (Dousset et al., 2011), and there is
25 evidence that higher night time temperatures have a detrimental impact on sleep quality, which is
26 linked with other negative health outcomes (Lack et al., 2008).

27 We found that almost all locations where sensitive populations are likely to be located (hospitals,
28 care homes, schools, colleges) were warmer than the regional average by up to 2°C, and the
29 number that are warmer is greater at night time (Figure 9). Of the seven prison locations within the
30 study area, most were located in more rural or suburban areas, and therefore were not exposed to
31 higher average ambient temperatures for this region.

32 Locations classified as hospitals here include a few small treatment centres such as family planning,
33 dialysis centres, etc., and therefore do not necessarily have resident populations who might be
34 exposed to the larger temperature anomalies at night. Locations classed as care homes have a high
35 density of residents, present day and night, and also include centres with specialised facilities for
36 those with mental health issues, sensory impairment, learning difficulties, and those who misuse
37 drugs and alcohol. Child care centres have a duty of care to protect people who cannot protect
38 themselves, with potentially high populations, including nurseries, crèches, toddler groups,
39 afterschool clubs, holiday schemes, and youth clubs. School locations are unlikely to be occupied at

1 night, when temperature anomalies are higher, and those of school age are exposed to ambient
2 temperatures close to the average for the population (though still above regional average). While
3 colleges have very high populations, they again are unlikely to be occupied at night.

4 The anomalies presented here are based on ambient temperature, although buildings play an
5 important role in determining actual exposure, particularly at night time. Studies using building
6 simulations to estimate indoor temperatures find a significant influence of building characteristics
7 on indoor temperatures (Taylor et al., 2015). However these studies often use a single ambient
8 temperature across all dwelling types, whereas this study shows that different building types are
9 likely to be exposed to different ambient temperatures across a region. Our study could help inform
10 development of inputs to building models by providing a modifier to ambient temperature based
11 on the likely outdoor temperatures for a particular building type.

12 While we have included the highest spatially resolved data that was available at the time, the
13 analysis makes some assumptions about distribution of certain factors. Data for housing types at
14 LSOA level, and population ages at OA level was the finest level of data that was available. Any
15 variations that may exist within an individual LSOA or OA respectively could not be captured by this
16 analysis. The BEP multi-layer urban canopy scheme used with WRF can capture the effects of the
17 built environment on energy and momentum fluxes (accounting for shading and reflections by
18 buildings) at sub-grid scale, providing a suitable representation of how urban areas influence
19 meteorology in a weather model such as WRF. However, microclimatic effects at individual building
20 level are not explicitly captured, as regional weather models can only be run down to 1 km
21 horizontal grid scale constrained by the valid sub-grid scale turbulence schemes, and therefore
22 results for individual locations interpolated from the 1 km grid may have additional variation. The
23 IMDs are a measure of relative deprivation, calculated by weighting data on different indicators
24 that can be used as measures of deprivation. The IMDs are calculated periodically, and although it
25 is a good measure for comparing areas with each other, this measure cannot be easily compared
26 with other years or used to identify trends, as the ranking is performed separately each time a new
27 dataset is released.

28 This study focuses primarily on the effects of heat, although other environmental or socioeconomic
29 factors in cities that may impact health could be considered in future studies. Such factors may
30 include air pollution, flood risk, social isolation or greenspace. Cold effects could also be
31 investigated. These and other factors identified as influencing health may be included in future
32 studies to develop an overall environmental risk map for cities. Finally, this study examines past
33 heatwave events in two years across the UK, allowing model validation against observations. Future
34 scenarios under climate change could be considered in further work.

35

36 **5. CONCLUSIONS**

1 Previous research suggests that the UHI may contribute around half of the heat related mortality
2 experienced during heatwaves (Heaviside et al., 2016). Increasing urbanisation and climate change
3 will increase heat related health risks in urban areas. We have developed a novel risk mapping
4 methodology that combines high spatial resolution modelling of temperature, population age, and
5 building types to identify locations and population sub-groups at higher health risk during
6 heatwaves. We have simulated and quantified the magnitude and characteristics of the UHI in the
7 West Midlands during two heatwave periods (August 2003 and July 2006), using the WRF-BEP
8 model. The UHI intensity across the region is on average 2.1°C, reaching up to 9.4°C, and there is
9 strong spatial heterogeneity in ambient temperature across the region, particularly at night. Spatial
10 analysis using GIS techniques shows that locations where people already more vulnerable to the
11 effects of exposure to heat (e.g. the elderly, those with pre-existing health conditions, and those
12 dependent on others for care) may reside, tend to be located in the hotter parts of the region.
13 Sensitive receptors (94% of hospitals, 90% of care homes, 87% of schools, and 88% of child care
14 centres) are co-located with higher than the average air temperatures across the West Midlands.
15 Buildings that are more susceptible to overheating, such as flats, are exposed to higher ambient
16 temperatures than other housing types.

17 Interventions such as urban greening or building modifications such as cool roofs may help offset
18 some of the UHI intensity, and reduce the spatial disparity in ambient temperatures, particularly at
19 night. The results from this work could help identify which factors are most strongly correlated with
20 ambient temperature, and help target resources and interventions, as well as focus health
21 messaging during heatwaves to the greatest effect.

22 Further research is needed to estimate the spatial heterogeneity of factors influencing heat risk in
23 cities. In addition, future work should consider the health impacts and potential benefits that UHI
24 mitigation techniques in a UK city would have on building overheating, as well as the co-benefits or
25 other unintended environmental consequences that may occur in a city.

26

27 **ACKNOWLEDGEMENTS**

28 The research was funded by the National Institute for Health Research Health Protection Research
29 Unit (NIHR HPRU) in Environmental Change and Health at the London School of Hygiene and
30 Tropical Medicine in partnership with Public Health England (PHE), and in collaboration with the
31 University of Exeter, University College London, and the Met Office. The views expressed are those
32 of the author(s) and not necessarily those of the NHS, the NIHR, the Department of Health or Public
33 Health England. The authors gratefully acknowledge the reviews by two anonymous reviewers and
34 the editor, which have helped improve the manuscript.

35

36 **REFERENCES**

- 1 Arbuthnott, K., Hajat, S., Heaviside, C., Vardoulakis, S. (2016) Changes in population susceptibility to heat
2 and cold over time: assessing adaptation to climate change. *Environmental Health* 15, S33.
- 3 Azevedo, J., Chapman, L., Muller, C. (2016) Quantifying the Daytime and Night-Time Urban Heat Island in
4 Birmingham, UK: A Comparison of Satellite Derived Land Surface Temperature and High Resolution Air
5 Temperature Observations. *Remote Sensing* 8, 153.
- 6 Bassett, R., Cai, X., Chapman, L., Heaviside, C., Thornes, J.E., Muller, C.L., Young, D.T., Warren, E.L. (2016)
7 Observations of urban heat island advection from a high-density monitoring network. *Quarterly Journal of
8 the Royal Meteorological Society* 142, 2434-2441.
- 9 Beizaee, A., Lomas, K.J., Firth, S.K. (2013) National survey of summertime temperatures and overheating risk
10 in English homes. *Building and Environment* 65, 1-17.
- 11 Belmin, J., Auffray, J.-C., Berbezier, C., Boirin, P., Mercier, S., de Reviers, B., Golmard, J.-L. (2007) Level of
12 dependency: a simple marker associated with mortality during the 2003 heatwave among French dependent
13 elderly people living in the community or in institutions. *Age and Ageing* 36, 298-303.
- 14 Benz, S.A., Bayer, P., Blum, P. (2017) Identifying anthropogenic anomalies in air, surface and groundwater
15 temperatures in Germany. *Science of The Total Environment* 584-585, 145-153.
- 16 Bougeault, P., Lacarrere, P. (1989) Parameterization of Orography-Induced Turbulence in a Mesobeta--Scale
17 Model. *Monthly Weather Review* 117, 1872-1890.
- 18 Brown, S., Walker, G. (2008) Understanding heat wave vulnerability in nursing and residential homes.
19 *Building Research & Information* 36, 363-372.
- 20 Chen, F., Kusaka, H., Bornstein, R., Ching, J., Grimmond, C.S.B., Grossman-Clarke, S., Loidan, T., Manning,
21 K.M., Martilli, A., Miao, S., Sailor, D., Salamanca, F.P., Taha, H., Tewari, M., Wang, X., Wyszogrodzki, A.A.,
22 Zhang, C. (2011) The integrated WRF/urban modelling system: development, evaluation, and applications to
23 urban environmental problems. *International Journal of Climatology* 31, 273-288.
- 24 Davis, R.E., Hondula, D.M., Patel, A.P. (2016) Temperature Observation Time and Type Influence Estimates of
25 Heat-Related Mortality in Seven U.S. Cities. *Environmental Health Perspectives* 124, 795-804.
- 26 Dee, D.P., Uppala, S.M., Simmons, A.J., Berrisford, P., Poli, P., Kobayashi, S., Andrae, U., Balmaseda, M.A.,
27 Balsamo, G., Bauer, P., Bechtold, P., Beljaars, A.C.M., van de Berg, L., Bidlot, J., Bormann, N., Delsol, C.,
28 Dragani, R., Fuentes, M., Geer, A.J., Haimberger, L., Healy, S.B., Hersbach, H., Hólm, E.V., Isaksen, L., Kållberg,
29 P., Köhler, M., Matricardi, M., McNally, A.P., Monge-Sanz, B.M., Morcrette, J.J., Park, B.K., Peubey, C., de
30 Rosnay, P., Tavolato, C., Thépaut, J.N., Vitart, F. (2011) The ERA-Interim reanalysis: configuration and
31 performance of the data assimilation system. *Quarterly Journal of the Royal Meteorological Society* 137,
32 553-597.
- 33 Dousset, B., Gourmelon, F., Laaidi, K., Zeghnoun, A., Giraudet, E., Bretin, P., Mauri, E., Vandentorren, S.
34 (2011) Satellite monitoring of summer heat waves in the Paris metropolitan area. *International Journal of
35 Climatology* 31, 313-323.
- 36 Du, H., Wang, D., Wang, Y., Zhao, X., Qin, F., Jiang, H., Cai, Y. (2016) Influences of land cover types,
37 meteorological conditions, anthropogenic heat and urban area on surface urban heat island in the Yangtze
38 River Delta Urban Agglomeration. *Science of The Total Environment*.
- 39 Dudhia, J. (1989) Numerical Study of Convection Observed during the Winter Monsoon Experiment Using a
40 Mesoscale Two-Dimensional Model. *Journal of the Atmospheric Sciences* 46, 3077-3107.

- 1 Gupta, R., Walker, G., Lewis, A., Barnfield, L., Gregg, M., Neven, L., (2016) Care provision fit for a future
2 climate. Oxford Brookes University, Published by the Joseph Rowntree Foundation (available from
3 jrf.org.uk).
- 4 Hajat, S., Kovats, R.S., Lachowycz, K. (2007) Heat-related and cold-related deaths in England and Wales: who
5 is at risk? *Occup Environ Med* 64, 93-100.
- 6 Hajat, S., Vardoulakis, S., Heaviside, C., Eggen, B. (2014) Climate change effects on human health: Projections
7 of temperature-related mortality for the UK during the 2020s, 2050s and 2080s. *Journal of Epidemiology and
8 Community Health* 68, 641-648.
- 9 Hatchett, B.J., Koračin, D., Mejía, J.F., Boyle, D.P. (2016) Assimilating urban heat island effects into climate
10 projections. *Journal of Arid Environments* 128, 59-64.
- 11 Health Statistics Quarterly (2006) Estimated daily mortality during July 2006 in England and Wales. *Health
12 statistics quarterly / Office for National Statistics*, 107-111.
- 13 Heaviside, C., Cai, X.-M., Vardoulakis, S. (2015) The effects of horizontal advection on the urban heat island
14 in Birmingham and the West Midlands, United Kingdom during a heatwave. *Quarterly Journal of the Royal
15 Meteorological Society* 141, 1429-1441.
- 16 Heaviside, C., Macintyre, H.L., Vardoulakis, S. (2017) The Urban Heat Island: Implications for health in a
17 changing environment. *Current Environmental Health Reports*, (early online)
18 <https://link.springer.com/article/10.1007%1002Fs40572-40017-40150-40573>.
- 19 Heaviside, C., Vardoulakis, S., Cai, X. (2016) Attribution of mortality to the Urban Heat Island during
20 heatwaves in the West Midlands, UK. *Environmental Health* 15 Suppl 1:27. .
- 21 Hondula, D.M., Barnett, A.G. (2014) Heat-Related Morbidity in Brisbane, Australia: Spatial Variation and
22 Area-Level Predictors. *Environ Health Perspect* 122, 831–836.
- 23 Höppe, P. (1999) The physiological equivalent temperature – a universal index for the biometeorological
24 assessment of the thermal environment. *International Journal of Biometeorology* 43, 71-75.
- 25 House of Commons, (2013) Older prisoners: Fifth Report of Session 2013–14, Volume I, in: Committee,
26 H.o.C.J. (Ed.).
- 27 HPA, (2012) Health Effects of Climate Change in the UK 2012, in: Vardoulakis, S., Heaviside, C. (Eds.). Health
28 Protection Agency.
- 29 Human Rights Clinic, (2015) Reckless Indifference: Deadly Heat in Texas Prisons, The University of Texas
30 School of Law <https://law.utexas.edu/clinics/2015/05/24/usa-extreme-heat-in-texas-prisons-fall-2013/>.
- 31 Jerrett, M., Burnett, R.T., Pope, C.A.I., Ito, K., Thurston, G., Krewski, D., Shi, Y., Calle, E., Thun, M. (2009)
32 Long-Term Ozone Exposure and Mortality. *New England Journal of Medicine* 360, 1085-1095.
- 33 Johnson, D.P., Wilson, J.S. (2009) The socio-spatial dynamics of extreme urban heat events: The case of heat-
34 related deaths in Philadelphia. *Applied Geography* 29, 419-434.
- 35 Johnson, H., Kovats, R.S., McGregor, G., Stedman, J., Gibbs, M., Walton, H., Cook, L., Black, E. (2005) The
36 impact of the 2003 heat wave on mortality and hospital admissions in England. *Health statistics quarterly /
37 Office for National Statistics*, 6-11.

1 Ketterer, C., Matzarakis, A. (2014) Comparison of different methods for the assessment of the urban heat
2 island in Stuttgart, Germany. *International Journal of Biometeorology*.

3 Kim, Y.-H., Baik, J.-J. (2002) Maximum Urban Heat Island Intensity in Seoul. *Journal of Applied Meteorology*
4 41, 651-659.

5 Kirtman, B., Power, S.B., Adedoyin, J.A., Boer, G.J., Bojariu, R., Camilloni, I., Doblas-Reyes, F.J., Fiore, A.M.,
6 Kimoto, M., Meehl, G.A., Prather, M., Sarr, A., Schär, C., Sutton, R., van Oldenborgh, G.J., Vecchi, G., Wang,
7 H.J., (2013) Near-term Climate Change: Projections and Predictability, in: Stocker, T.F., Qin, D., Plattner, G.-
8 K., Tignor, M., Allen, S.K., Boschung, J., Nauels, A., Xia, Y., Bex, V., Midgley, P.M. (Eds.), *Climate Change 2013:*
9 *The Physical Science Basis. Contribution of Working Group I to the Fifth Assessment Report of the*
10 *Intergovernmental Panel on Climate Change*. Cambridge University Press, Cambridge, United Kingdom and
11 New York, NY, USA, pp. 953-1028.

12 Kovats, R.S., Johnson, H., Griffiths, C. (2006) Mortality in southern England during the 2003 heat wave by
13 place of death. *Health statistics quarterly / Office for National Statistics*, 6-8.

14 Lack, L.C., Gradisar, M., Van Someren, E.J.W., Wright, H.R., Lushington, K. (2008) The relationship between
15 insomnia and body temperatures. *Sleep Medicine Reviews* 12, 307-317.

16 Martilli, A., Clappier, A., Rotach, M. (2002) An Urban Surface Exchange Parameterisation for Mesoscale
17 Models. *Boundary-Layer Meteorology* 104, 261-304.

18 Met Office, (2012) Met Office Integrated Data Archive System (MIDAS) Land and Marine Surface Stations
19 Data (1853-current). NCAS British Atmospheric Data Centre.

20 Mitchell, B.C., Chakraborty, J. (2015) Landscapes of thermal inequity: disproportionate exposure to urban
21 heat in the three largest US cities. *Environmental Research Letters* 10, 115005.

22 Mitchell, D., Heaviside, C., Vardoulakis, S., Huntingford, C., Masato, G., Guillod, B.P., Frumhoff, P., Bowery,
23 A., Wallom, D., Allen, M. (2016) Attributing human mortality during extreme heat waves to anthropogenic
24 climate change. *Environmental Research Letters* 11, 074006.

25 Mlawer, E.J., Taubman, S.J., Brown, P.D., Iacono, M.J., Clough, S.A. (1997) Radiative transfer for
26 inhomogeneous atmospheres: RRTM, a validated correlated-k model for the longwave. *Journal of*
27 *Geophysical Research: Atmospheres* 102, 16663-16682.

28 National Population Database, (2015) National Population Database Tool. Health and Safety Laboratory,
29 commissioned by HSE. Licensed to PHE under PSMA Contractor Licence (HSL). ,
30 <https://data.gov.uk/dataset/national-population-database4> , April 2015.

31 Offender management statistics quarterly, (2016) Offender management statistics quarterly: April to June
32 2016. Ministry of Justice © Crown copyright 2016, pp.
33 <https://www.gov.uk/government/collections/offender-management-statistics-quarterly>.

34 Oke, T.R. (1973) City size and the urban heat island. *Atmospheric Environment* 7, 769-779.

35 Oke, T.R. (1982) The energetic basis of the urban heat island. *Quarterly Journal of the Royal Meteorological*
36 *Society* 108, 1-24.

37 ONS, (2007) The English Indices of Deprivation. Office for National Statistics,
38 <https://www.gov.uk/government/collections/english-indices-of-deprivation>.

- 1 ONS (2011) Office for National Statistics, Census.
- 2 PHE, (2015) Heatwave Plan for England. [https://www.gov.uk/government/publications/heatwave-plan-for-](https://www.gov.uk/government/publications/heatwave-plan-for-england)
3 [england](https://www.gov.uk/government/publications/heatwave-plan-for-england).
- 4 Robine, J.-M., Cheung, S.L.K., Le Roy, S., Van Oyen, H., Griffiths, C., Michel, J.-P., Herrmann, F.R. (2008) Death
5 toll exceeded 70,000 in Europe during the summer of 2003. *Comptes Rendus Biologies* 331, 171-178.
- 6 Salthammer, T., Uhde, E., Schripp, T., Schieweck, A., Morawska, L., Mazaheri, M., Clifford, S., He, C.,
7 Buonanno, G., Querol, X., Viana, M., Kumar, P. (2016) Children's well-being at schools: Impact of climatic
8 conditions and air pollution. *Environment International* 94, 196-210.
- 9 Sherwood, S.C., Huber, M. (2010) An adaptability limit to climate change due to heat stress. *Proceedings of*
10 *the National Academy of Sciences* 107, 9552-9555.
- 11 Steadman, R.G. (1984) A Universal Scale of Apparent Temperature. *Journal of Climate and Applied*
12 *Meteorology* 23, 1674-1687.
- 13 Symonds, P., Taylor, J., Mavrogianni, A., Davies, M., Shrubsole, C., Hamilton, I., Chalabi, Z. (2017)
14 Overheating in English dwellings: comparing modelled and monitored large-scale datasets. *Building Research*
15 *& Information* 45, 195-208.
- 16 Taylor, J., Wilkinson, P., Davies, M., Armstrong, B., Chalabi, Z., Mavrogianni, A., Symonds, P., Oikonomou, E.,
17 Bohnenstengel, S.I. (2015) Mapping the effects of urban heat island, housing, and age on excess heat-related
18 mortality in London. *Urban Climate* 14, Part 4, 517-528.
- 19 Tewari, M., Chen, F., Wang, W., Dudhia, J., LeMone, M.A., Mitchell, K., Ek, M., Gayno, G., Wegiel, J., Cuenca,
20 R.H., (2004) Implementation and verification of the unified Noah land surface model in the WRF model, 20th
21 Conference on Weather Analysis and Forecasting/16th Conference on Numerical Weather Prediction,
22 Seattle, Washington., p. Abstract 14.12A.
- 23 The Promise of Justice Initiative, (2013) Court rules in Louisiana death row conditions case: Extreme heat on
24 death row found to violate eighth amendment to U.S. constitution, [http://justicespromise.org/about-](http://justicespromise.org/about-us/news-press/82-court-rules-in-louisiana-death-row-conditions-case-extreme-heat-on-death-row-found-to-violate-eighth-amendment-to-u-s-constitution)
25 [us/news-press/82-court-rules-in-louisiana-death-row-conditions-case-extreme-heat-on-death-row-found-to-](http://justicespromise.org/about-us/news-press/82-court-rules-in-louisiana-death-row-conditions-case-extreme-heat-on-death-row-found-to-violate-eighth-amendment-to-u-s-constitution)
26 [violate-eighth-amendment-to-u-s-constitution](http://justicespromise.org/about-us/news-press/82-court-rules-in-louisiana-death-row-conditions-case-extreme-heat-on-death-row-found-to-violate-eighth-amendment-to-u-s-constitution). The Promise of Justice Initiative.
- 27 Tomlinson, C.J., Chapman, L., Thornes, J.E., Baker, C.J. (2011) Including the urban heat island in spatial heat
28 health risk assessment strategies: a case study for Birmingham, UK. *International Journal of Health*
29 *Geographics* 10, 42.
- 30 Tomlinson, C.J., Chapman, L., Thornes, J.E., Baker, C.J. (2012) Derivation of Birmingham's summer surface
31 urban heat island from MODIS satellite images. *International Journal of Climatology* 32, 214-224.
- 32 Vardoulakis, S., Dear, K., Hajat, S., Heaviside, C., Eggen, B., McMichael, A. (2014) Comparative assessment of
33 the effects of climate change on heat- and cold-related mortality in the United Kingdom and Australia.
34 *Environmental Health Perspectives* 122, 1285-1292.
- 35 Vardoulakis, S., Dimitroulopoulou, C., Thornes, J., Lai, K.-M., Taylor, J., Myers, I., Heaviside, C., Mavrogianni,
36 A., Shrubsole, C., Chalabi, Z., Davies, M., Wilkinson, P. (2015) Impact of climate change on the domestic
37 indoor environment and associated health risks in the UK. *Environment International* 85, 299-313.
- 38 Wargocki, P., Wyon, D.P. (2007) The Effects of Moderately Raised Classroom Temperatures and Classroom
39 Ventilation Rate on the Performance of Schoolwork by Children (RP-1257). *HVAC&R Research* 13, 193-220.

1 Weber, S., Sadoff, N., Zell, E., de Sherbinin, A. (2015) Policy-relevant indicators for mapping the vulnerability
2 of urban populations to extreme heat events: A case study of Philadelphia. *Applied Geography* 63, 231-243.

3 Wolf, T., Chuang, W.-C., McGregor, G. (2015) On the Science-Policy Bridge: Do Spatial Heat Vulnerability
4 Assessment Studies Influence Policy? *International Journal of Environmental Research and Public Health* 12,
5 13321.

6 Wolf, T., McGregor, G. (2013) The development of a heat wave vulnerability index for London, United
7 Kingdom. *Weather and Climate Extremes* 1, 59-68.

8 Wong, M., Peng, F., Zou, B., Shi, W., Wilson, G. (2016) Spatially Analyzing the Inequity of the Hong Kong
9 Urban Heat Island by Socio-Demographic Characteristics. *International Journal of Environmental Research
10 and Public Health* 13, 317.

11 World Health Organization, (2015) Heatwaves and Health: Guidance on Warning-System Development, in:
12 McGregor, G.R., Bessemoulin, P., Ebi, K., Menne, B. (Eds.). *World Health Organization and World
13 Meteorological Office*.

14 Yu, W., Vaneckova, P., Mengersen, K., Pan, X., Tong, S. (2010) Is the association between temperature and
15 mortality modified by age, gender and socio-economic status? *Science of The Total Environment* 408, 3513-
16 3518.

17

18