

# Archdaily.com – Villa Seascape

Published July 30<sup>th</sup>, 2018

World About Contact Submit Advertise

  
the world's most visited architecture website

Projects News Articles Products Interviews Competitions Events Classics More Search Login Sign up

Immerse yourself in inspiring buildings with our selection of 360 videos. [Click here.](#)

Navigate articles using your keyboard 

ArchDaily · Projects · Houses · Indonesia · Word of Mouth House · 2018 · Seascape Lembongan / Word of Mouth Architecture



## Seascape Lembongan / Word of Mouth House

01:00 - 30 July, 2018

Save this project

Like 355 Tweet Pin it



Reach **136M+** professionals in Asia-Pacific with **LinkedIn Ads**

See how 

### MORE FROM WORD OF MOUTH HOUSE



Lovelli Residence / Word of Mouth Architecture



Tantangan Villa / Word of Mouth Architecture

# Seascape Lembongan / Word of Mouth House

Published July 30<sup>th</sup>, 2018



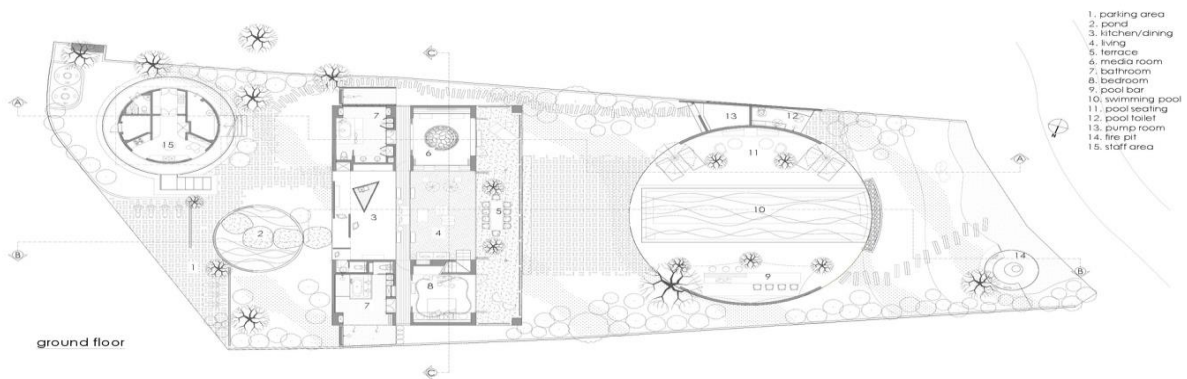
Architects : [Word of Mouth House](#)  
Location : Nusapenida, [Indonesia](#)  
Lead architect : Valentina Audrito  
Design team : Abbie Labrum, Levina Sunaryo and AAGB Sudarma Putra  
Area : 684.0 m2

Project Year : 2018  
Photographs : [Moch Sulthonn for Word of Mouth](#)  
Collaborating architect : Robin Bimantoro  
Contractor : CV Adi Jaya Utama  
C&S consultant : Triloka Studio Bali  
QUANTITY SURVEYOR : Ratio Construction  
EXTERIOR FINISHING : CV Adi Jaya Utama  
INTERIOR FINISHING : CV Adi Jaya Utama  
LANDSCAPE : CV Mandala Karya Pratama  
MEP CONTRACTOR : CV Pancar Electric  
AUDIO/VIDEO EQ : CV Smart Technic  
TENT / ROLLING BLIND : Canopy Art Bali  
NANO COATING : Resolve Indonesia  
Site : 1400.0 m2





*Text description provided by the architects.* Seascape Villa is an ocean front property on the island of Nusa Lembongan east of Bali. The design approach comes from the clients request to have a “Mediterranean feel” to the villa.





In response to this we have developed an architecture made of clean soft white volumes and we have combined these with various built in elements in concrete and pebbled floors. We had to work within a tight foot print due to building restrictions which resulted in a compact 2-storey main building which includes most of the bedrooms and communal spaces while we have placed the guest room above the service building which has been sunken slightly below ground level to reduce its impact against the main building. The pool area takes advantage of the length of the land and connects the building with the beach.



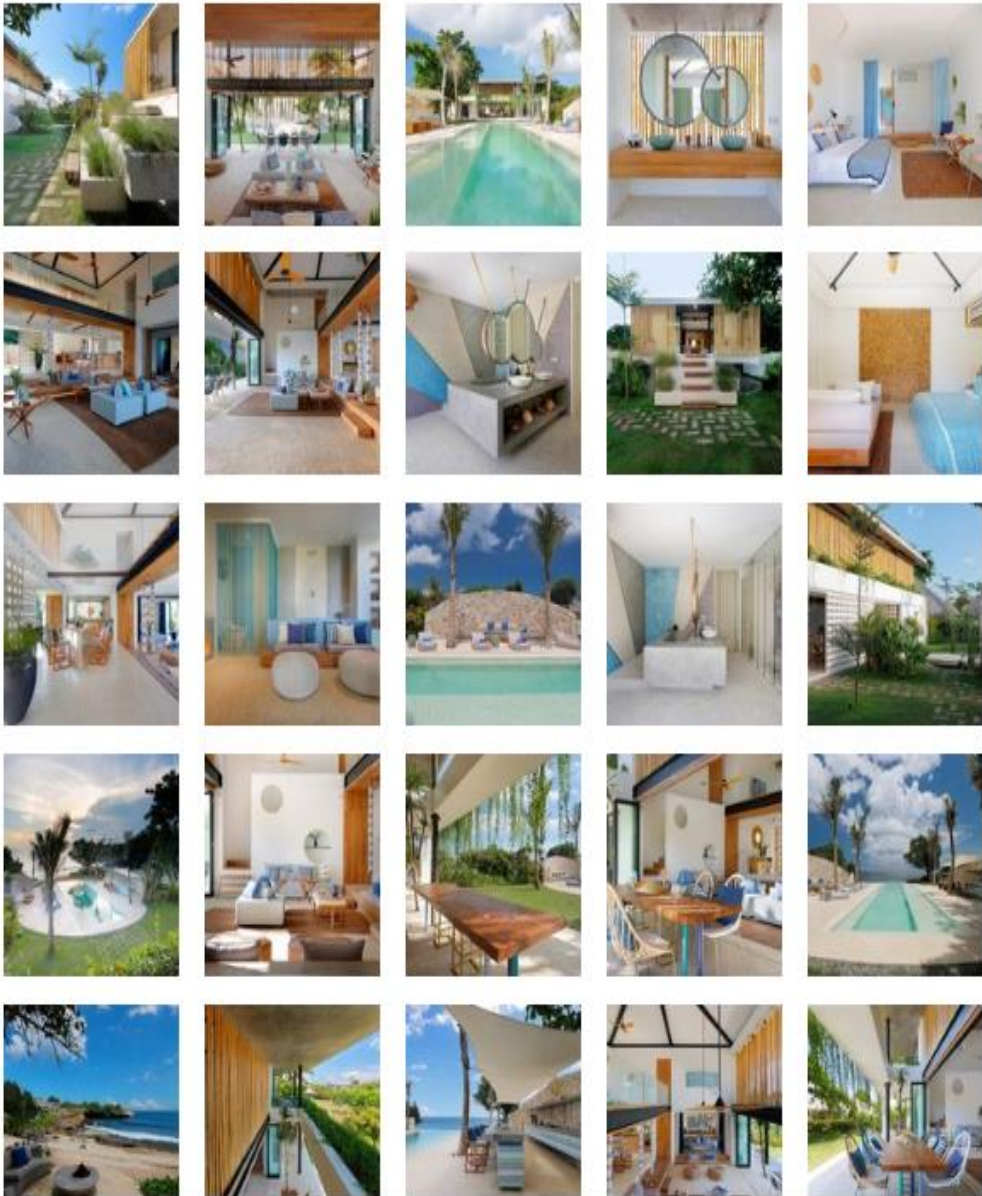




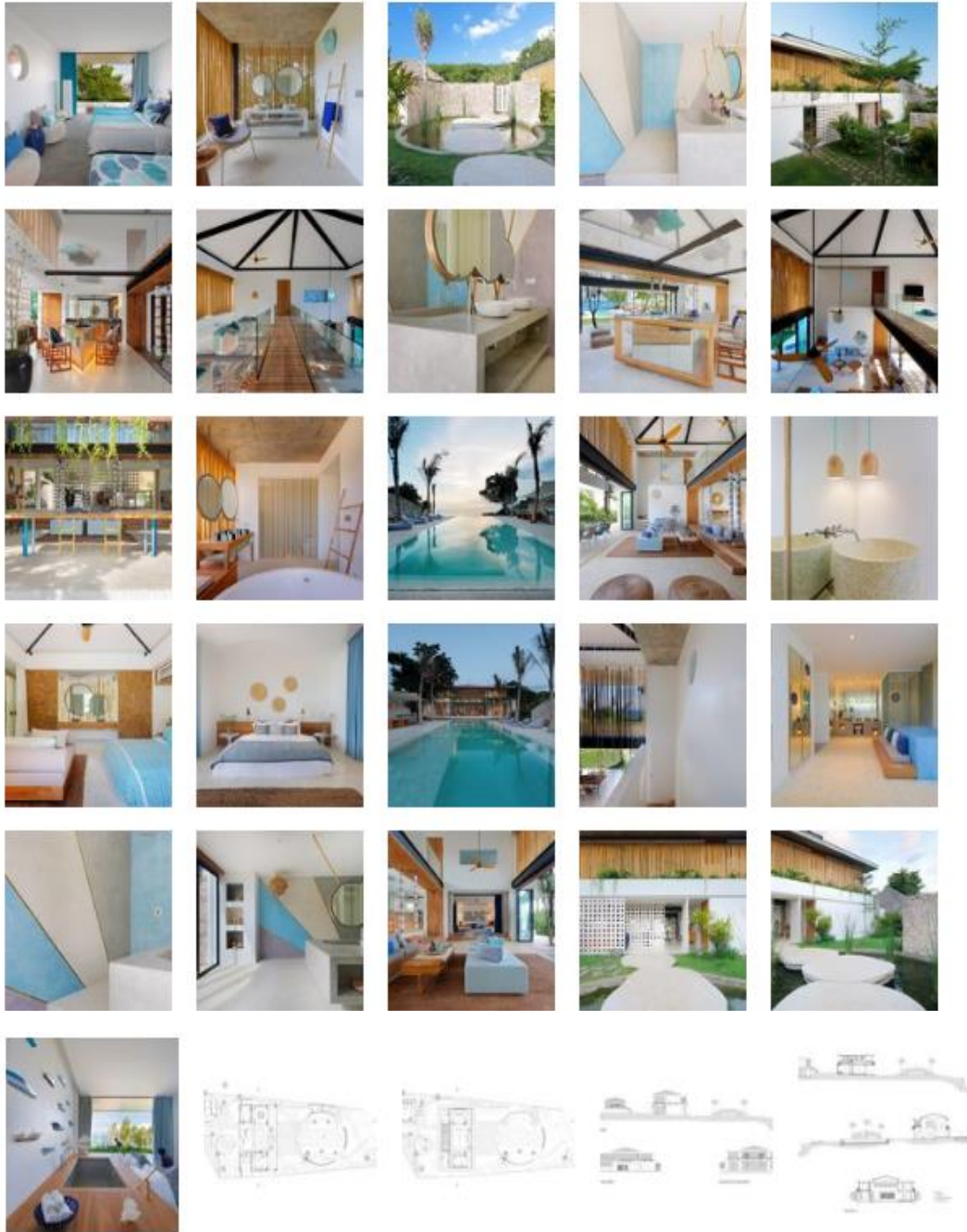
The elongated feeling of the pool within the land has been balanced by introducing a circular deck all around it. The combination of round and square shapes continues across the whole project whether it's in the pond design or in wall openings. Materials used have an organic feel and are accentuated by the extensive use of bamboo screens to balance the contemporary lines of the building.



**View the complete gallery**







Link : <https://www.archdaily.com/898990/seascape-lembongan-word-of-mouth-house>