

# A New Method to Compile Global Multi-Hazard Event Sets

Judith N. Claassen, *Elco E. Koks*, *Timothy Tiggeloven*, and  
*Marleen C. de Ruiter*



# Multi-Hazard Interrelationship

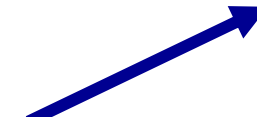
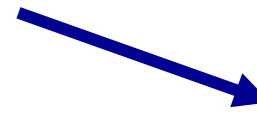
..... Triggering



..... Amplification



..... Compound



..... Consecutive



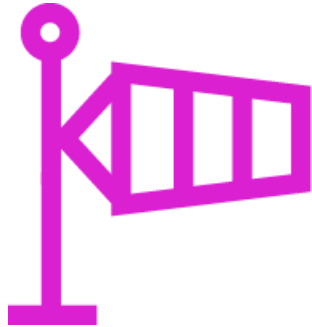
# Research Gap

... Triggering

... Amplification

... Compound

... Consecutive



Meteorological



Climatological

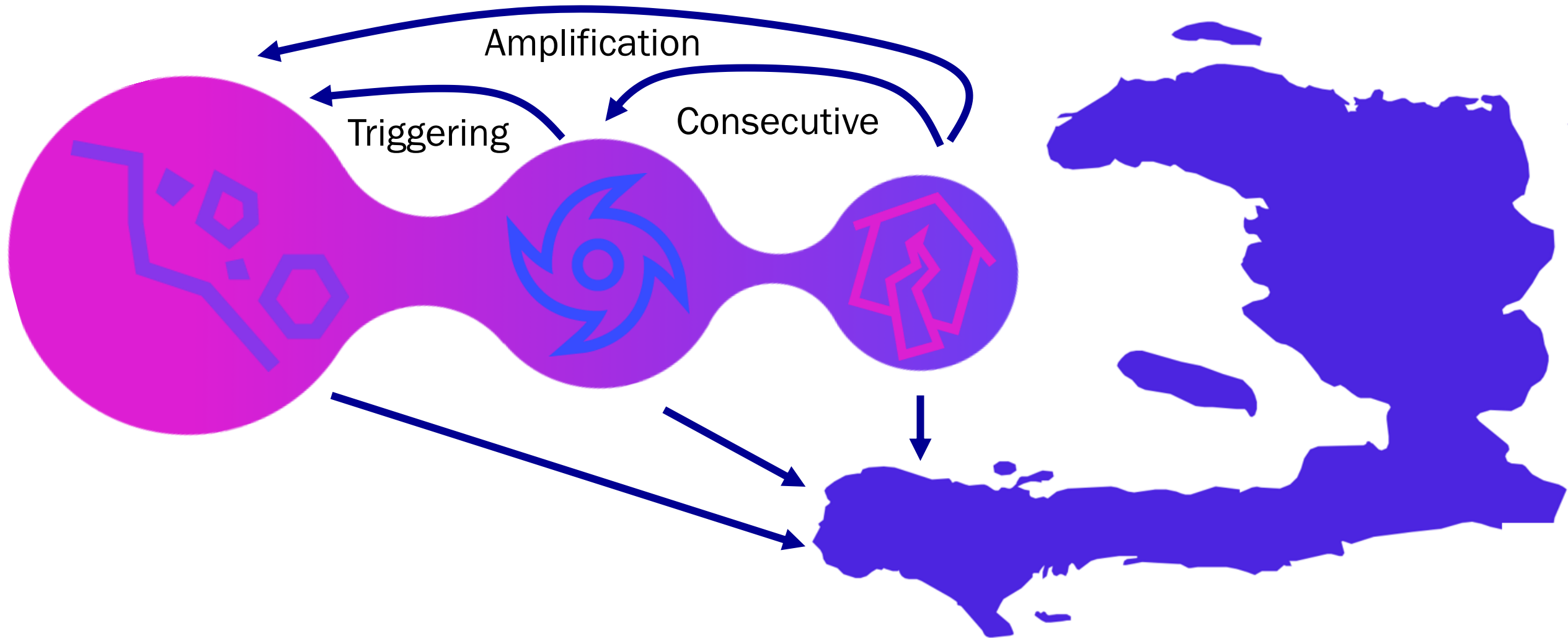


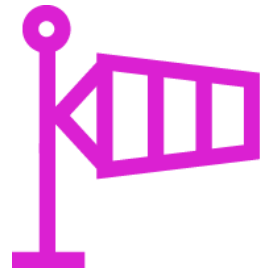
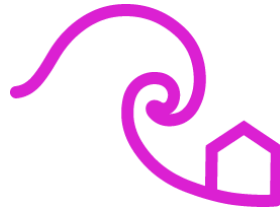
Geophysical

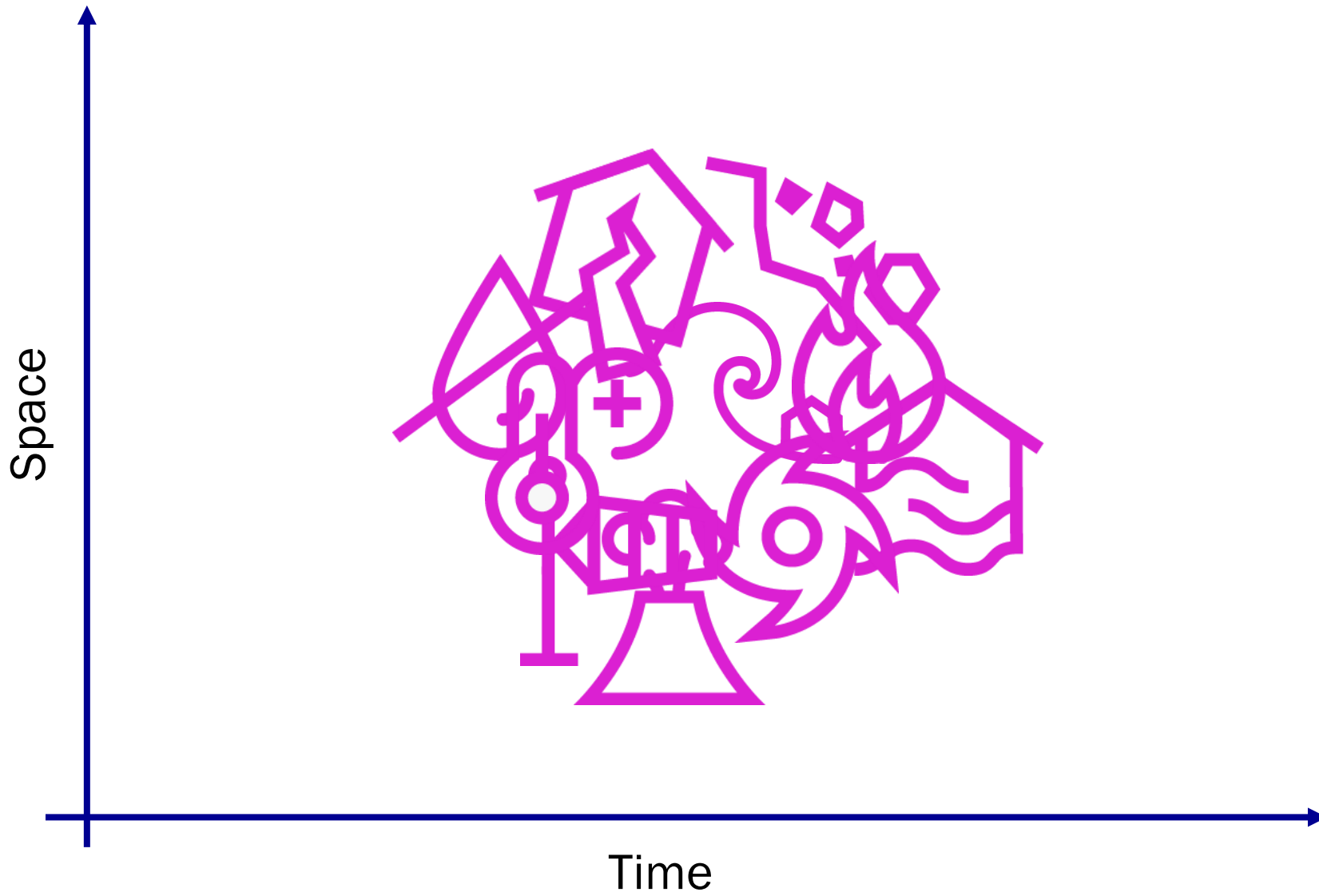


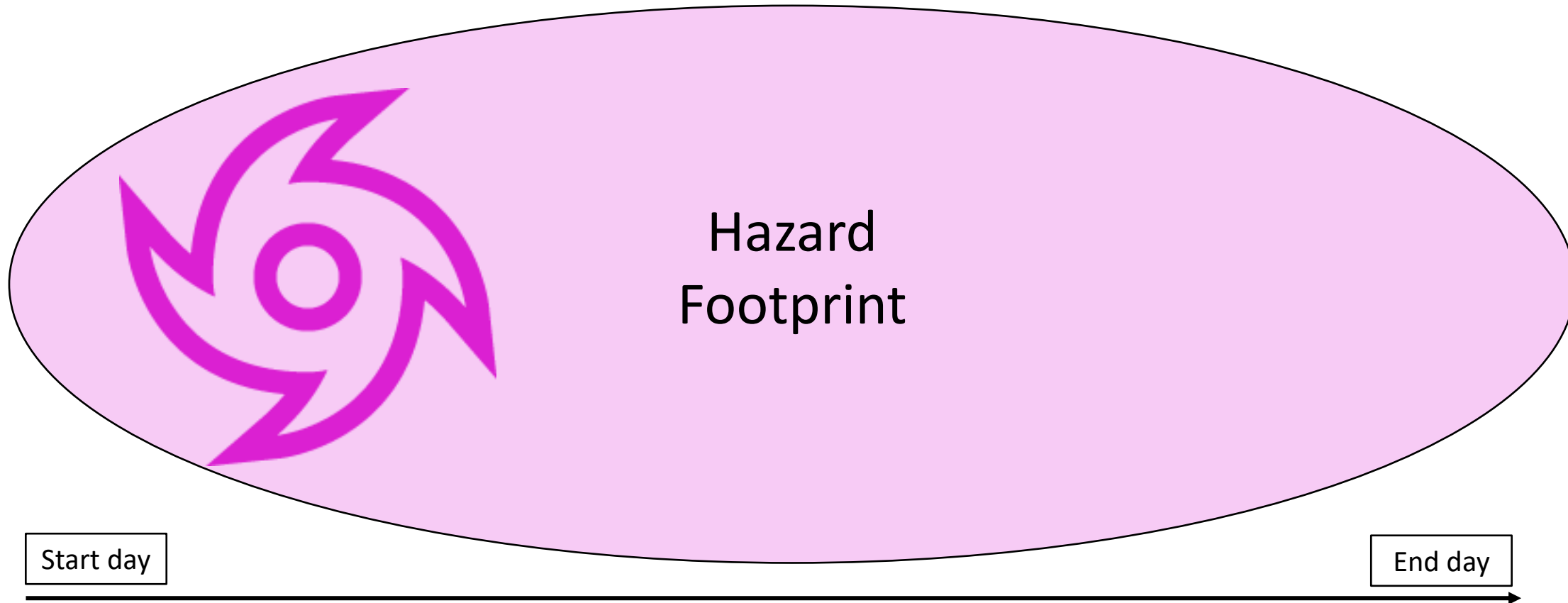
Hydrological

# Why is This Important?



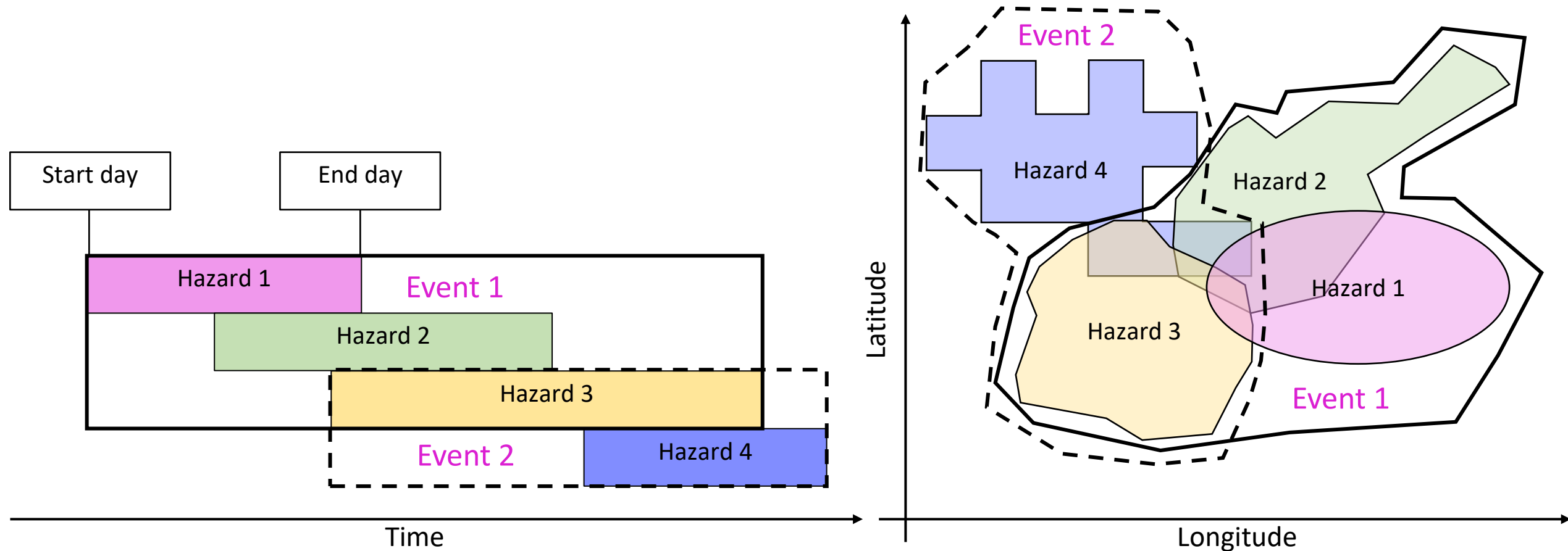




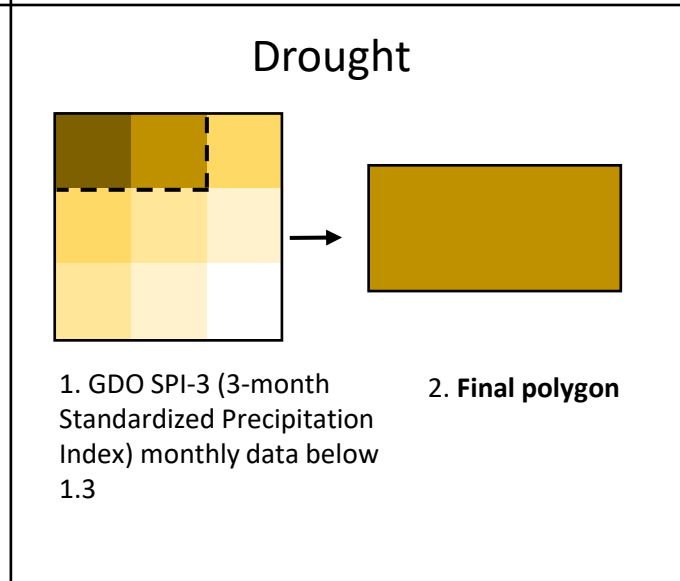
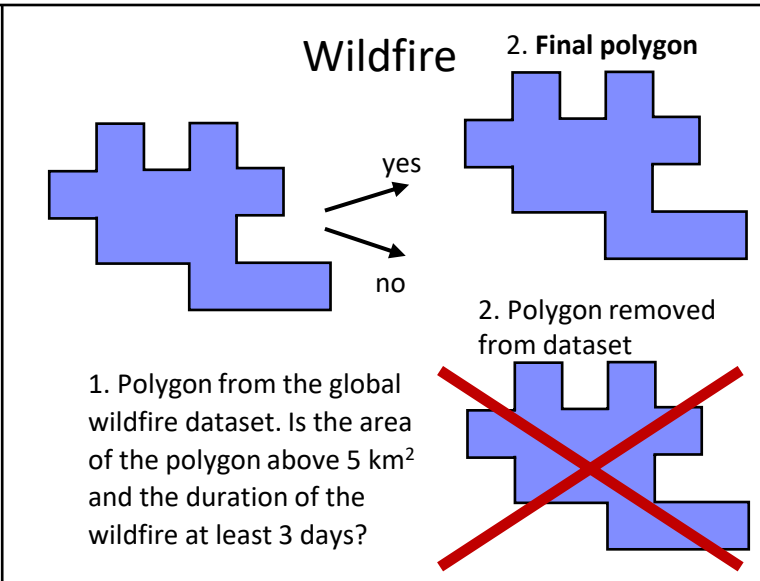
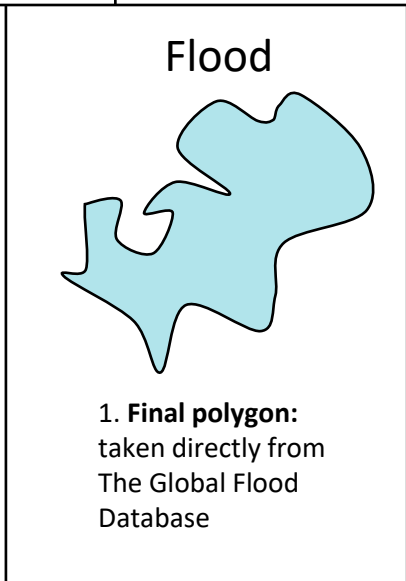
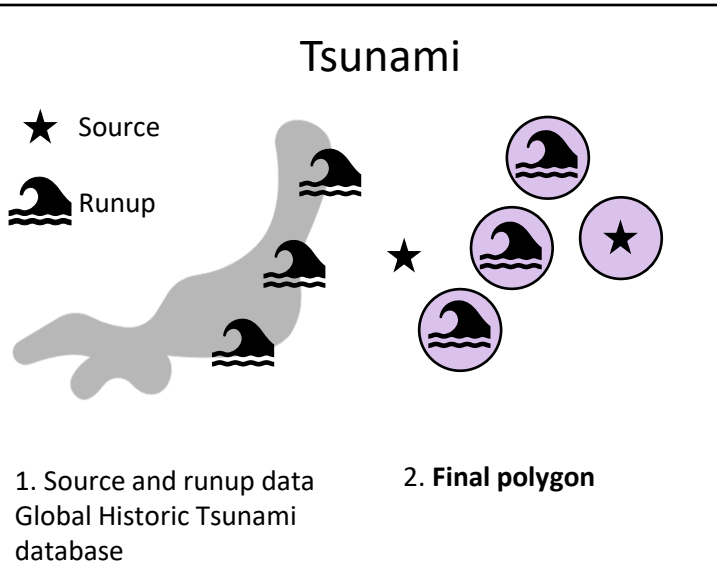
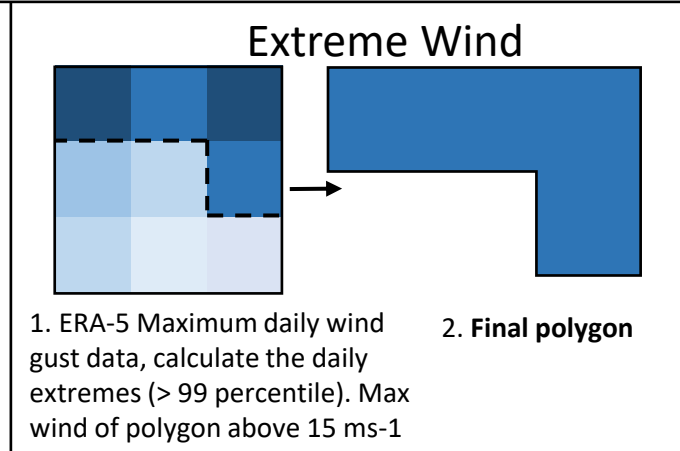
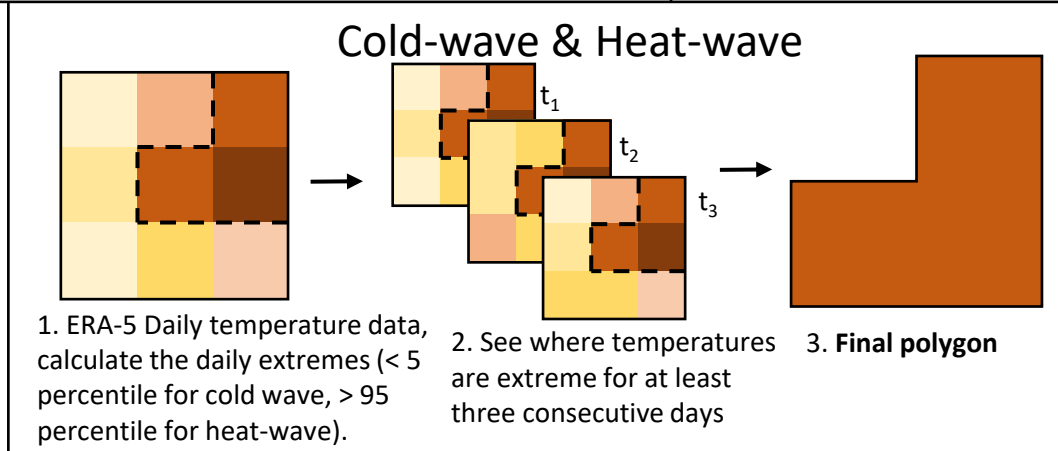
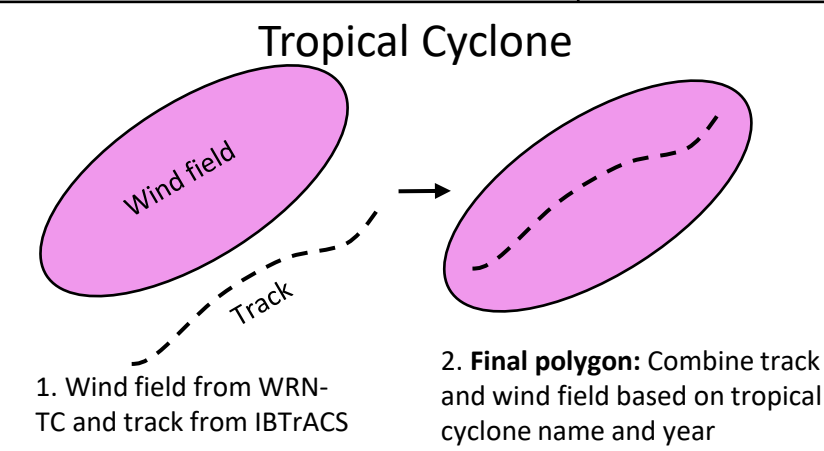
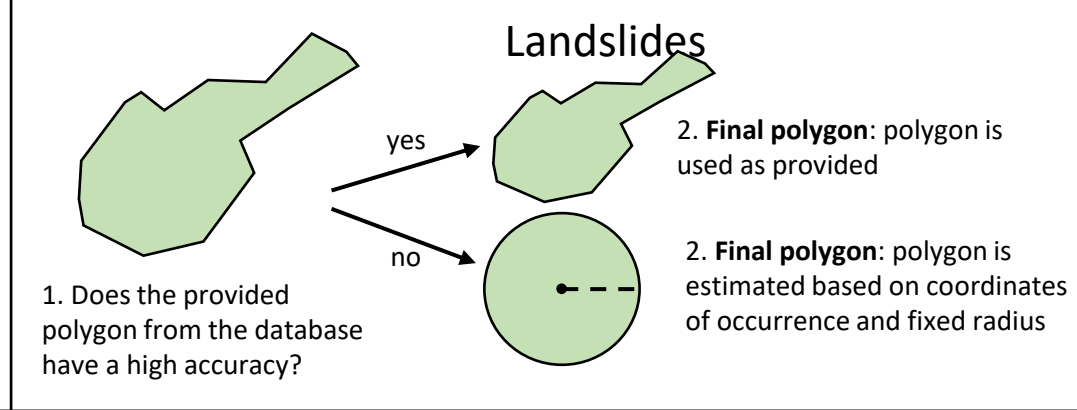
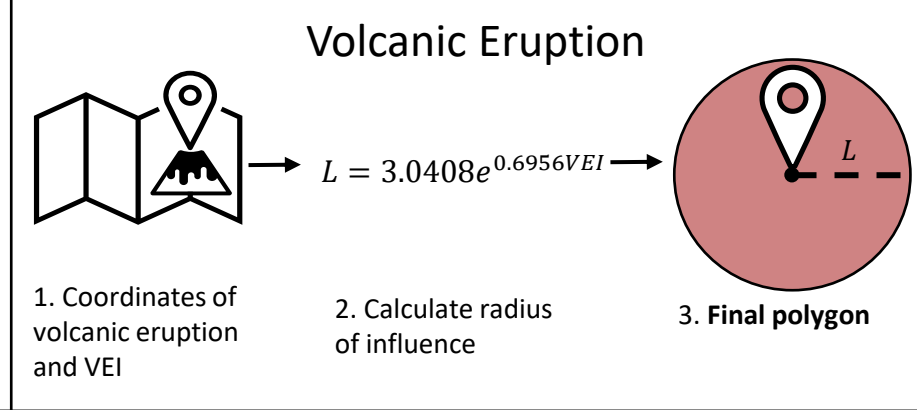
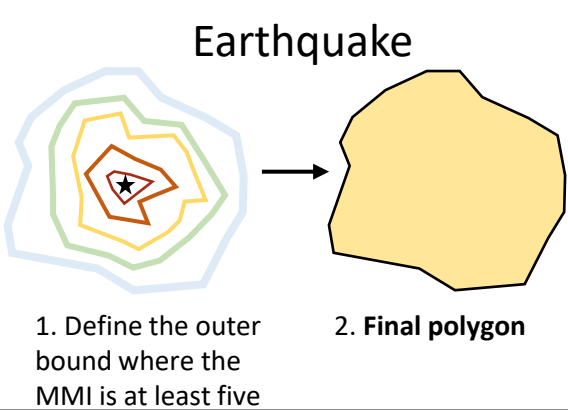


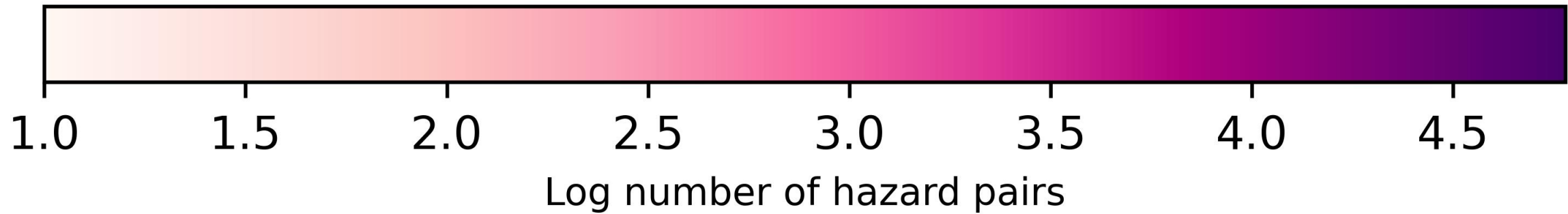
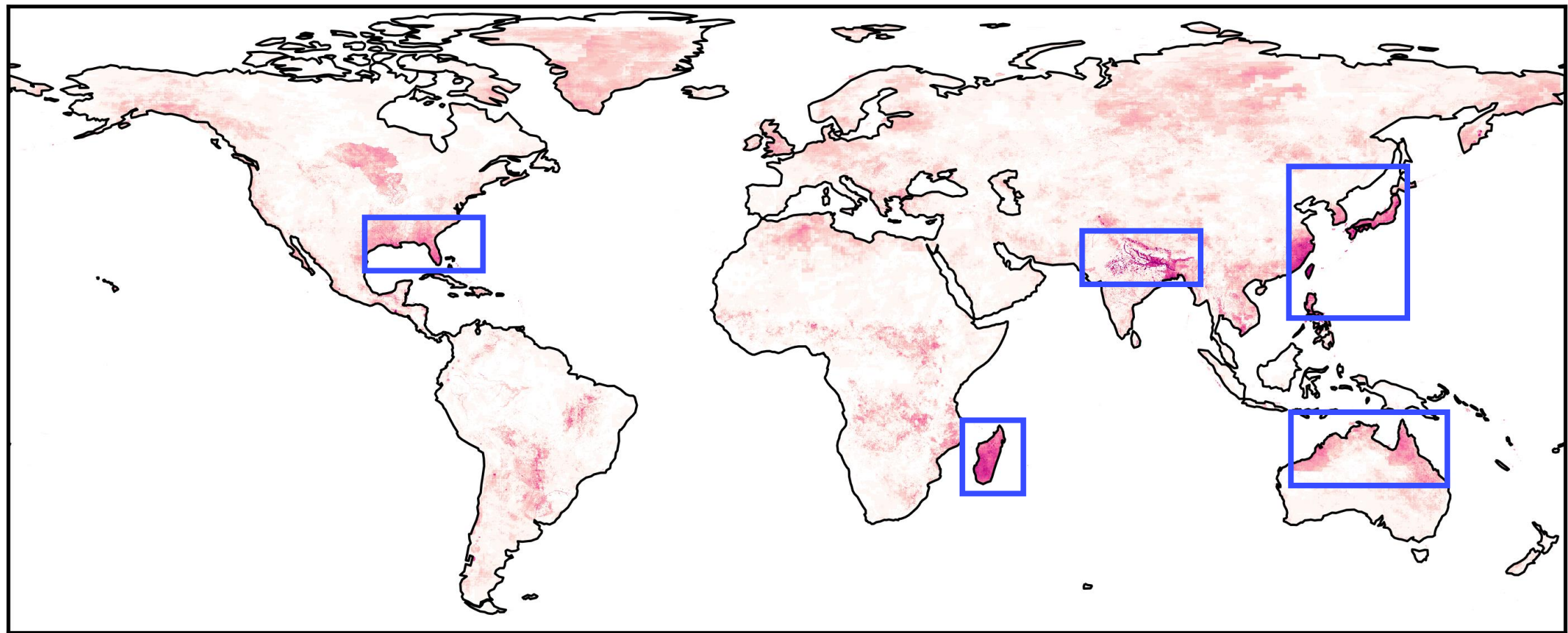
Duration

# MYRIAD-HESA: MYRIAD – Hazard Event Sets Algorithm

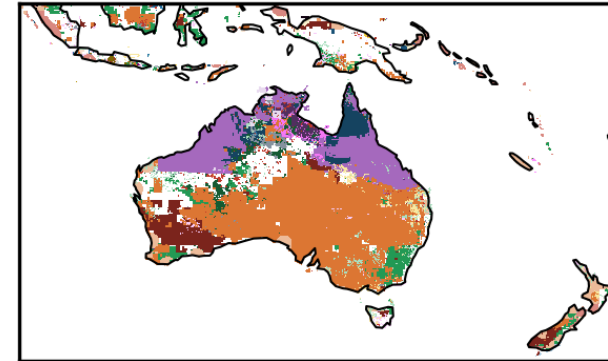
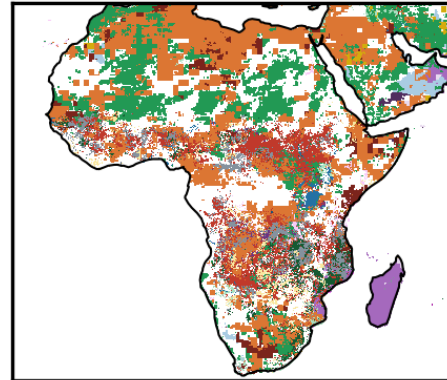
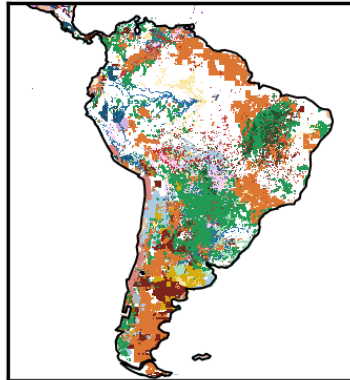
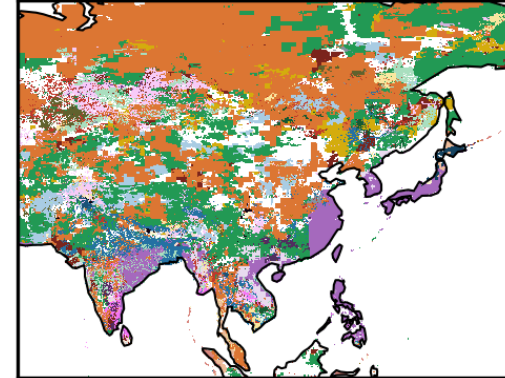
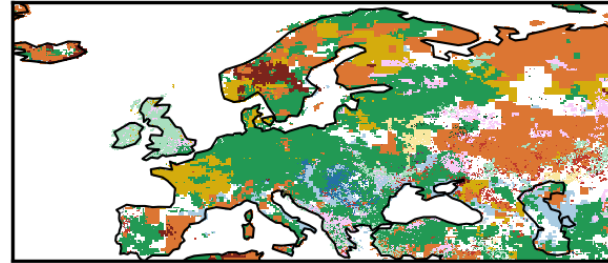
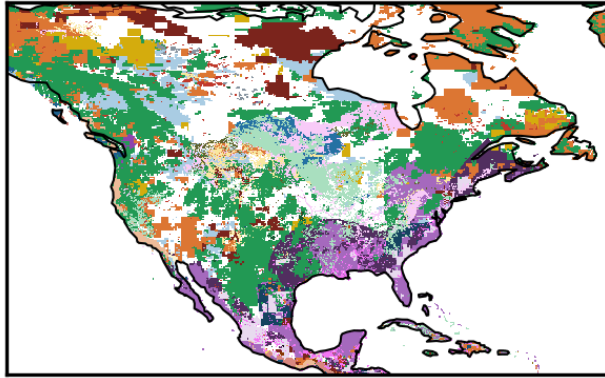








# Most Frequent Hazard Pair Between 2004 and 2017

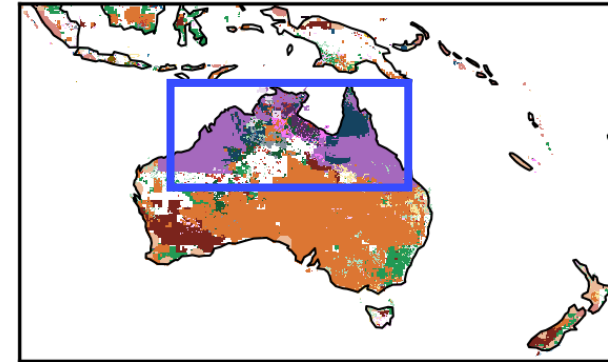
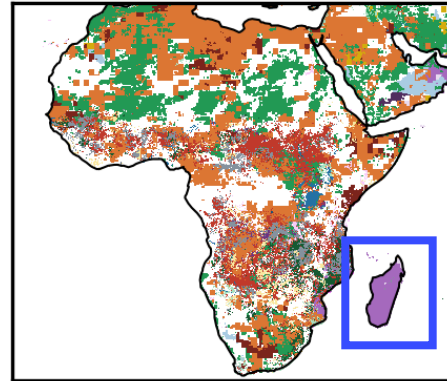
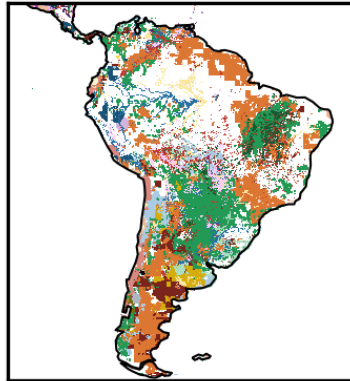
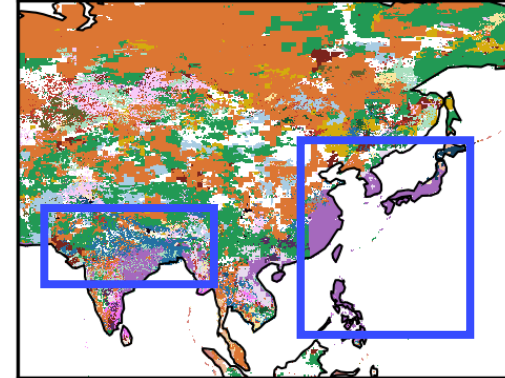
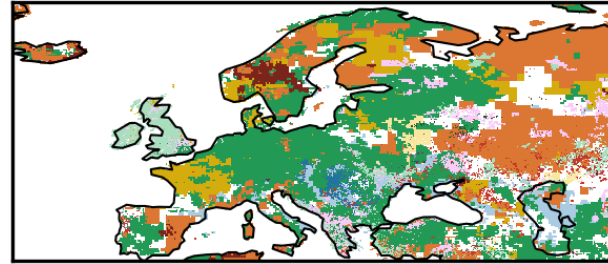
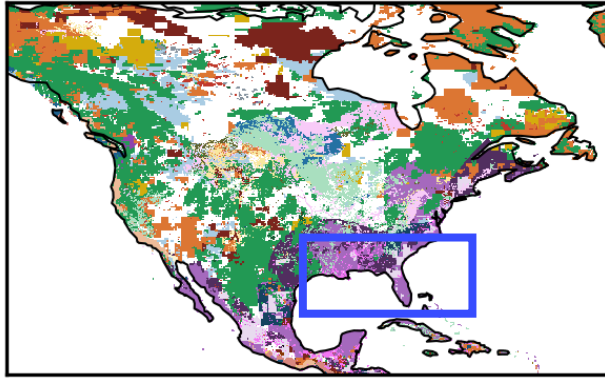


## 20 Most Frequent



- cw: coldwave
- dr: drought
- eq: earthquake
- ew: extreme wind
- fl: flood
- hw: heatwave
- ls: landslide
- tc: tropical cyclone
- ts: tsunami
- vo: volcanic eruption
- wf: wildfire

# Most Frequent Hazard Pair Between 2004 and 2017



## 20 Most Frequent



cw: coldwave

dr: drought

eq: earthquake

ew: extreme wind

fl: flood

hw: heatwave

ls: landslide

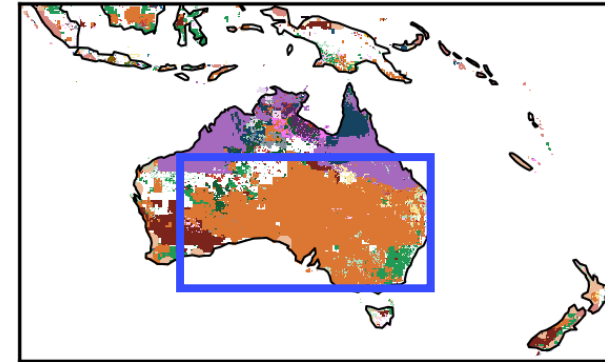
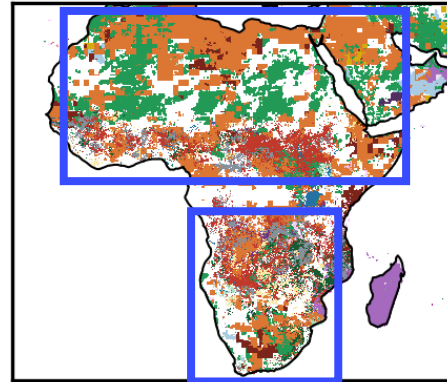
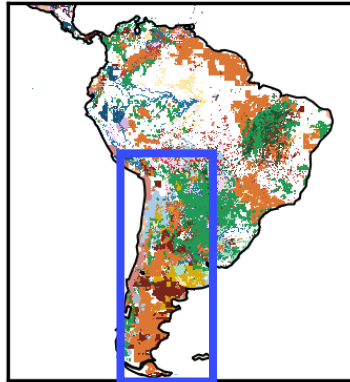
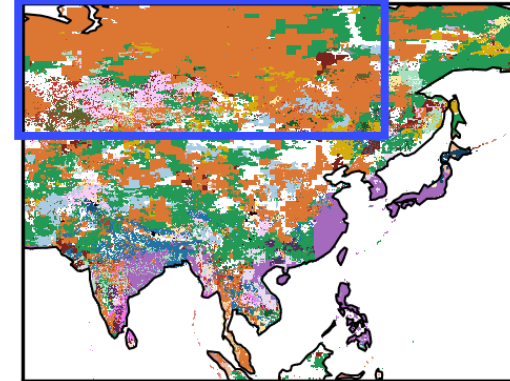
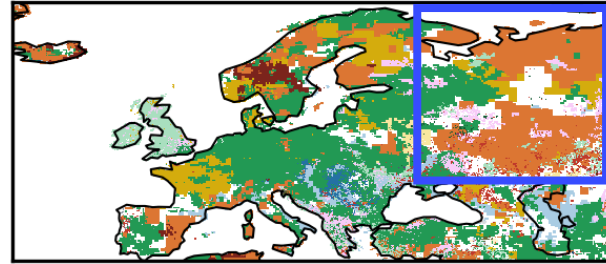
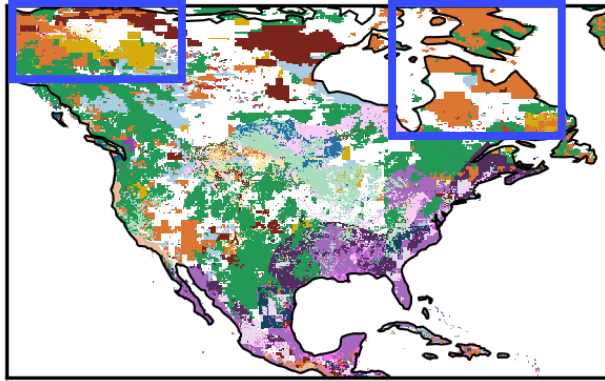
tc: tropical cyclone

ts: tsunami

vo: volcanic eruption

wf: wildfire

# Most Frequent Hazard Pair Between 2004 and 2017

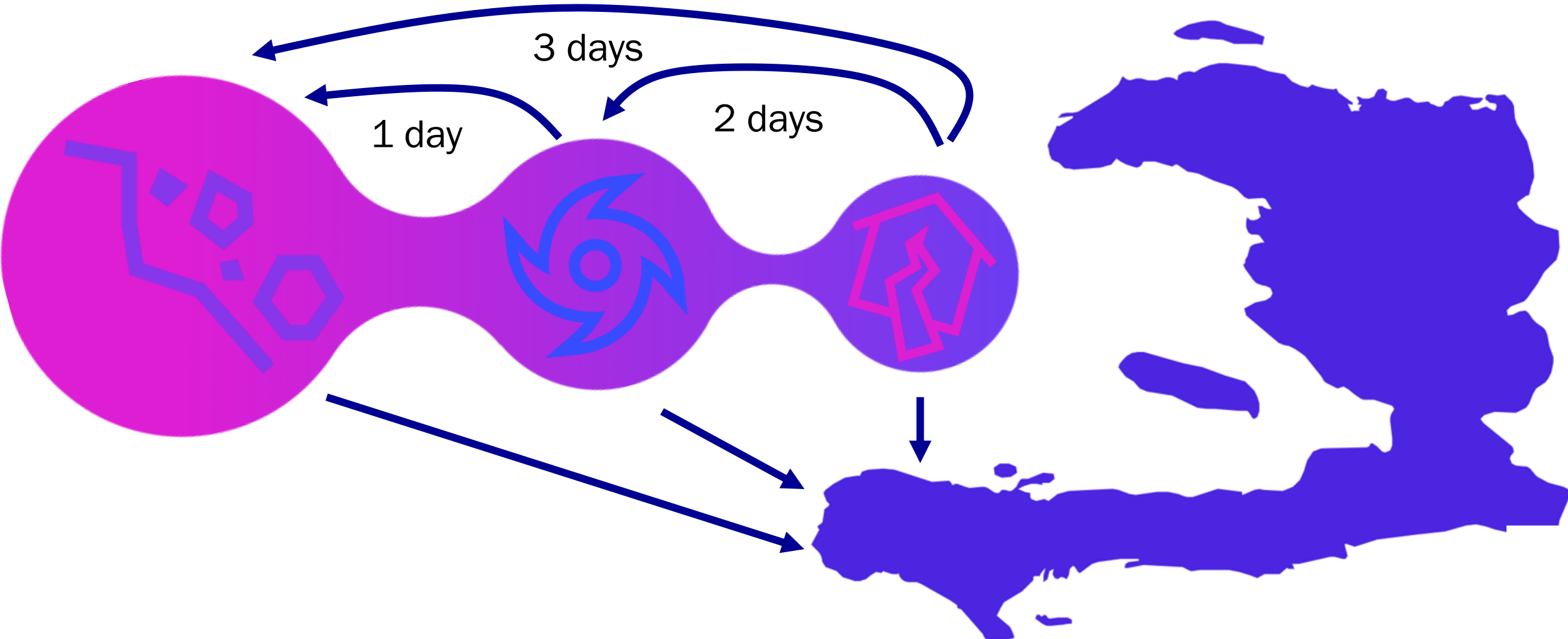


## 20 Most Frequent

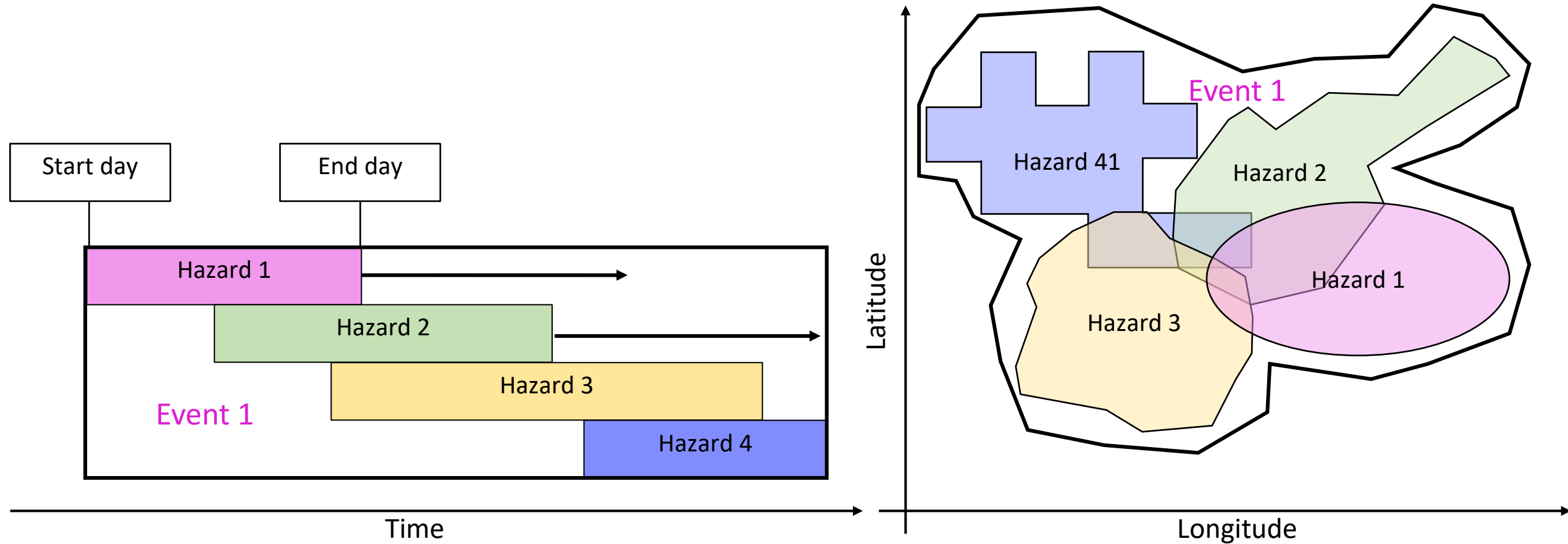


- cw: coldwave
- dr: drought
- eq: earthquake
- ew: extreme wind
- fl: flood
- hw: heatwave
- ls: landslide
- tc: tropical cyclone
- ts: tsunami
- vo: volcanic eruption
- wf: wildfire

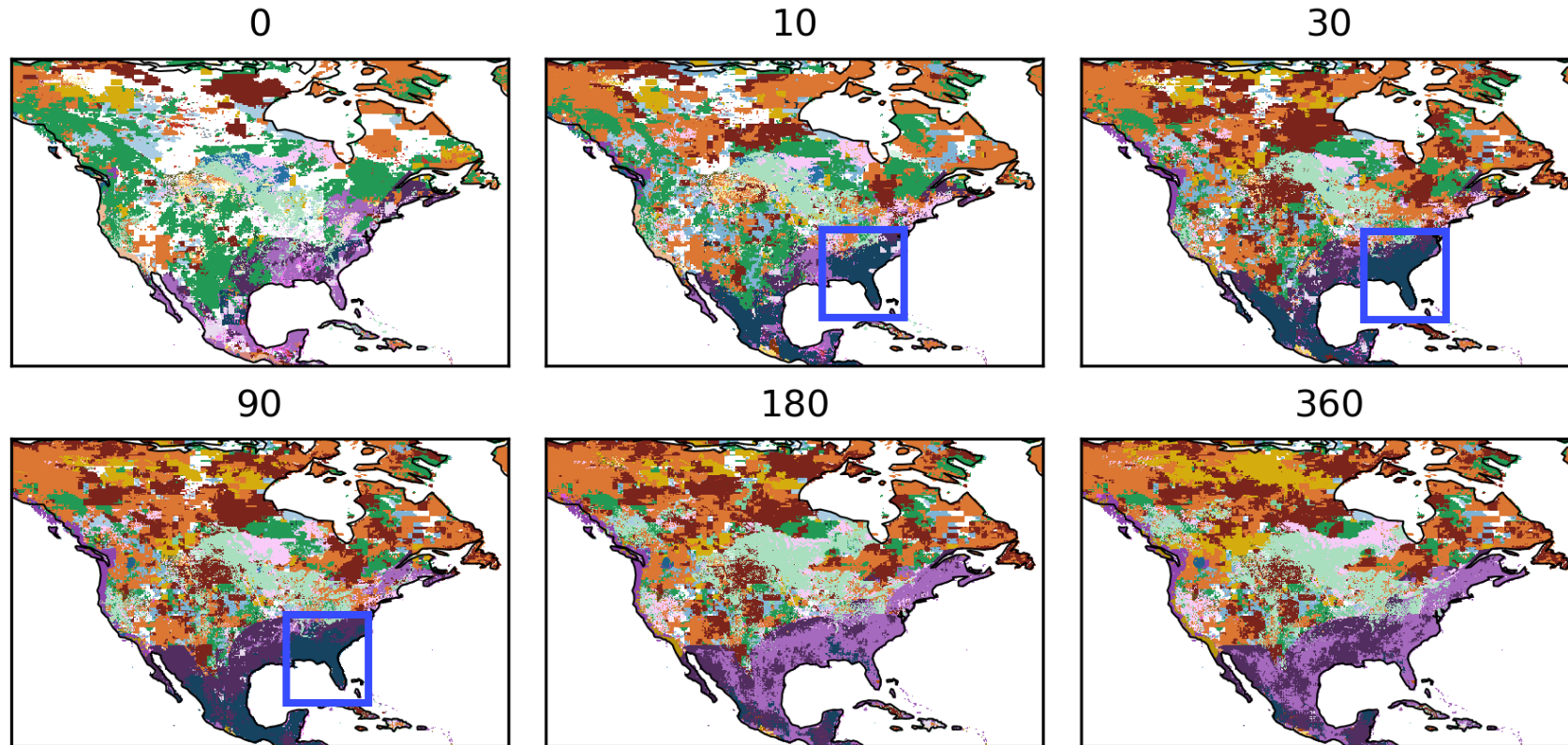
# Time-lag



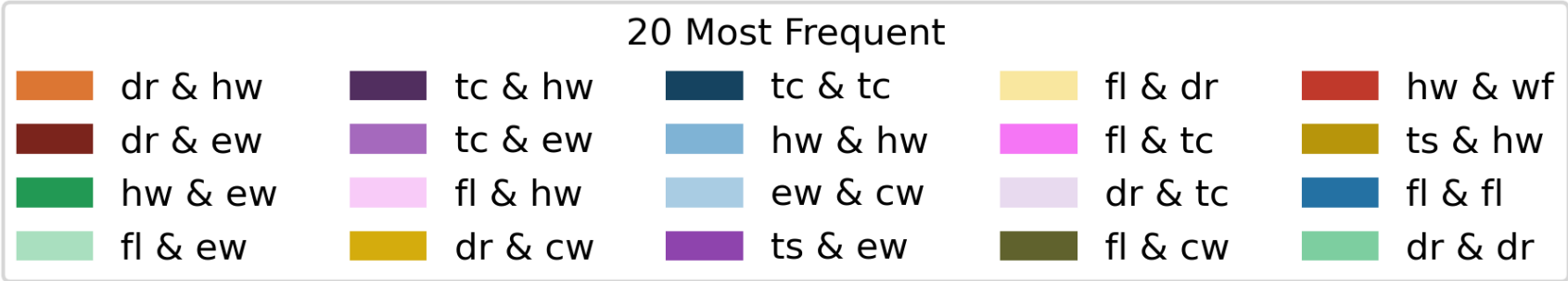
# MYRIAD-HESA: MYRIAD – Hazard Event Sets Algorithm



# Most Frequent Hazard Pair Between 2004 and 2017 in North America With Different Time-lags

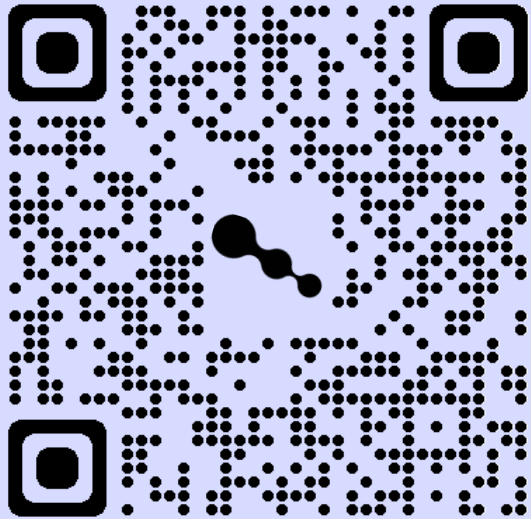


- cw: coldwave
- dr: drought
- eq: earthquake
- ew: extreme wind
- fl: flood
- hw: heatwave
- ls: landslide
- tc: tropical cyclone
- ts: tsunami
- vo: volcanic eruption
- wf: wildfire

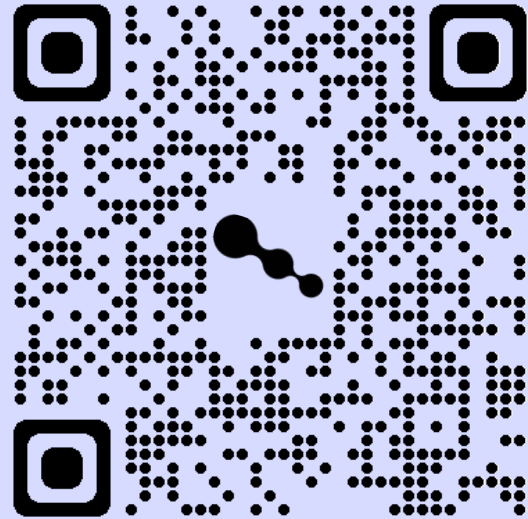




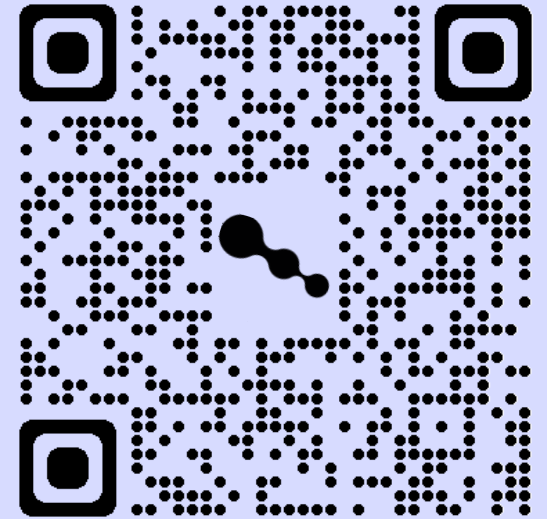
# Open-source Availability



**The Paper**



**The Algorithm**



**The Data**

# FAQ's

What makes a location susceptible to multi-hazards?

How does one hazard affect the likelihood of another hazard to occur?

Is there a method to quantify the time-lags between hazards?

How are multi-hazard impacts different from single-hazard impacts?

How does climate change affect multi-hazard events?

I want to know more about multi-risk in general ! Where should I go?

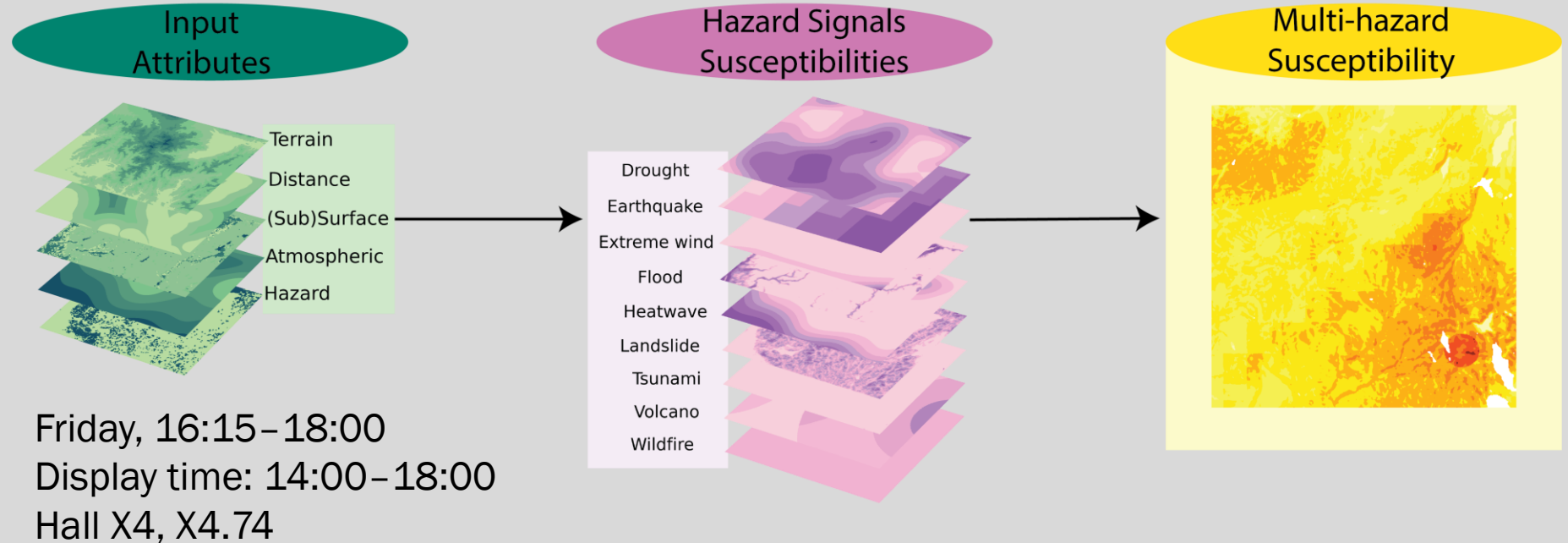
# FAQ's



Dr. Timothy Tiggeloven  
(IVM VU Amsterdam)



## What makes a location susceptible to multi-hazards?



How does one hazard affect the likelihood of another hazard to occur?

Is there a method to quantify the time-lags between hazards?

# FAQ's

What makes a location susceptible to multi-hazards?

How does one hazard affect the likelihood of another hazard to occur?

Is there a method to quantify the time-lags between hazards?

How are multi-hazard impacts different from single-hazard impacts?

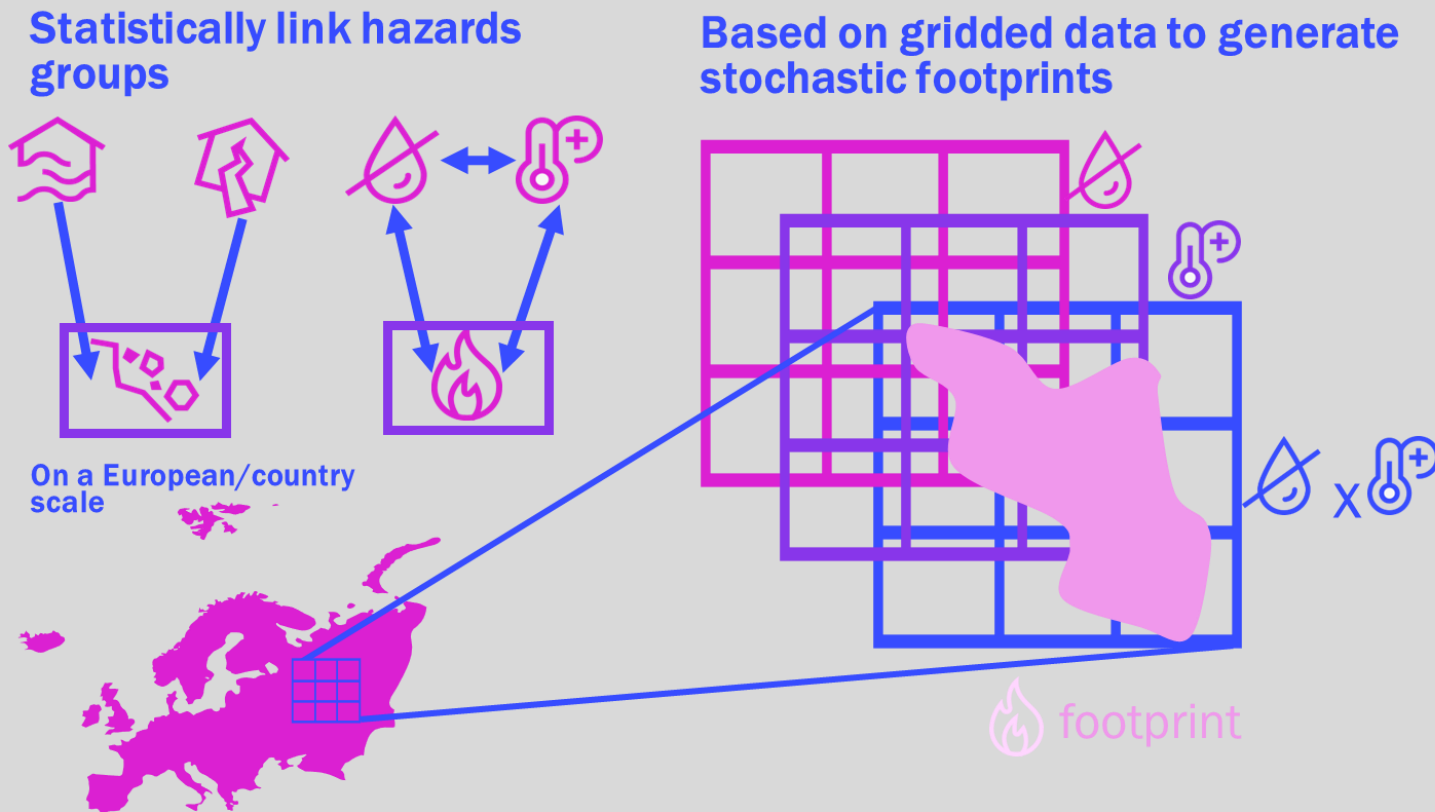
How does climate change affect multi-hazard events?

I want to know more about multi-risk in general ! Where should I go?

# FAQ's

What makes a location susceptible to multi-hazards?

How does one hazard affect the likelihood of another hazard to occur?



Friday, 16:15–18:00  
Display: 14:00–18:00  
Hall X5, X5.91

Is there a method to quantify the time lags between hazards?

# FAQ's

What makes a location susceptible to multi-hazards?

How does one hazard affect the likelihood of another hazard to occur?

Is there a method to quantify the time-lags between hazards?

How are multi-hazard impacts different from single-hazard impacts?

How does climate change affect multi-hazard events?

I want to know more about multi-risk in general! Where should I go?

# FAQ's

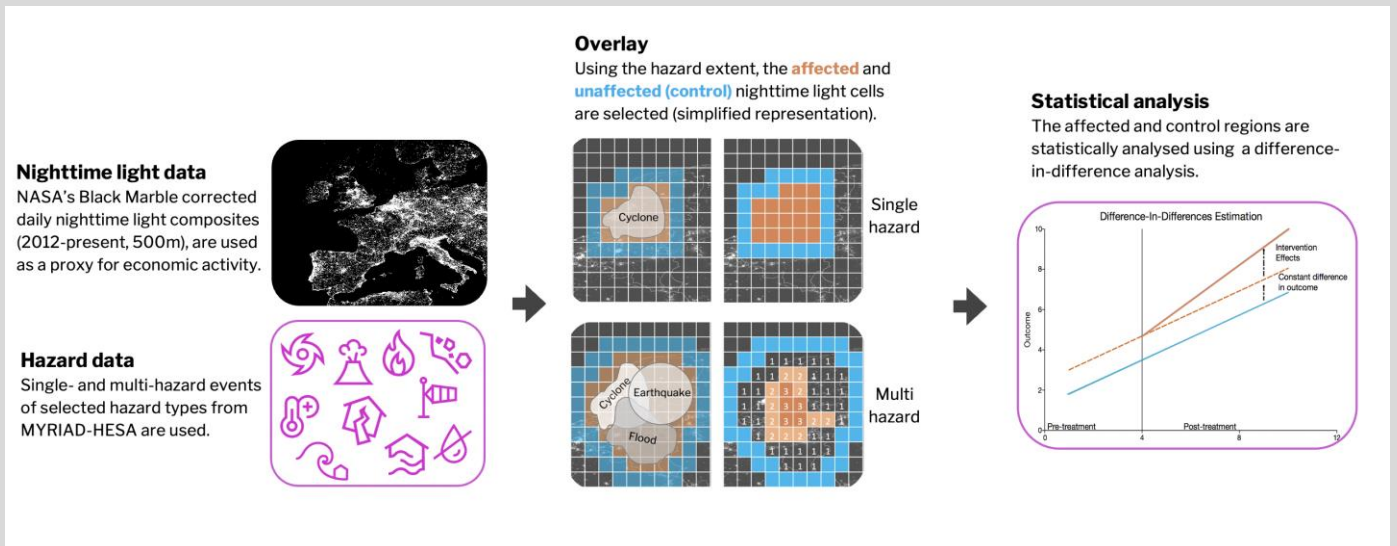
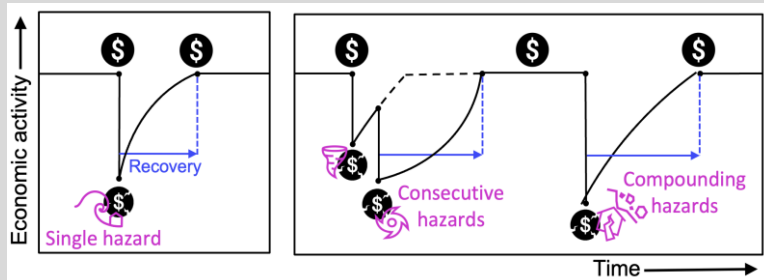
What makes a location susceptible to multi-hazards?

How does one hazard affect the likelihood of another hazard to occur?

Is there a method to quantify the time-lags between hazards?



Sophie Buijs  
(IVM VU Amsterdam)



How are multi-hazard impacts different from single-hazard impacts?

# FAQ's

What makes a location susceptible to multi-hazards?

How does one hazard affect the likelihood of another hazard to occur?

Is there a method to quantify the time-lags between hazards?

How are multi-hazard impacts different from single-hazard impacts?

How does climate change affect multi-hazard events?

I want to know more about multi-risk in general! Where should I go?



How does one hazard affect the likelihood of another hazard to occur?

Is there a method to quantify the time-lags between hazards?

How are multi-hazard impacts different from single-hazard impacts?



Dr. Wiebke Jäger  
(IVM VU Amsterdam)



Thursday 15:05–15:15  
Room M2

### Input data

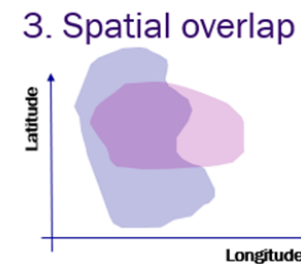
EM-DAT<sup>1</sup>: Socio-economic impact data  
GDIS<sup>2</sup>: Spatial footprints  
Period: 2010 – 2018  
Hazards:



### Single & Multi-Hazard Identification

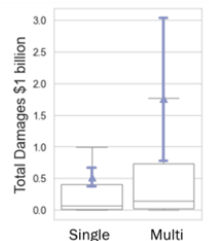
Adapted MYRIAD-HESA algorithm:<sup>3</sup>

1. EM-DAT multi-hazard information
2. Time lag
3. Spatial overlap

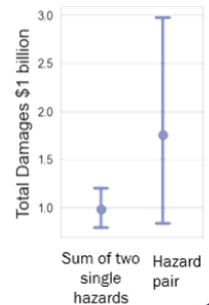


### Statistical Analysis of Impacts

Single hazard vs. hazard pair impacts



Sum of two single hazard vs. hazard pair impacts



# FAQ's

What makes a location susceptible to multi-hazards?

How does one hazard affect the likelihood of another hazard to occur?

Is there a method to quantify the time-lags between hazards?

How are multi-hazard impacts different from single-hazard impacts?

How does climate change affect multi-hazard events?

I want to know more about multi-risk in general! Where should I go?

# How are multi-hazard impacts different from single-hazard impacts?

## How does climate change affect multi-hazard events?

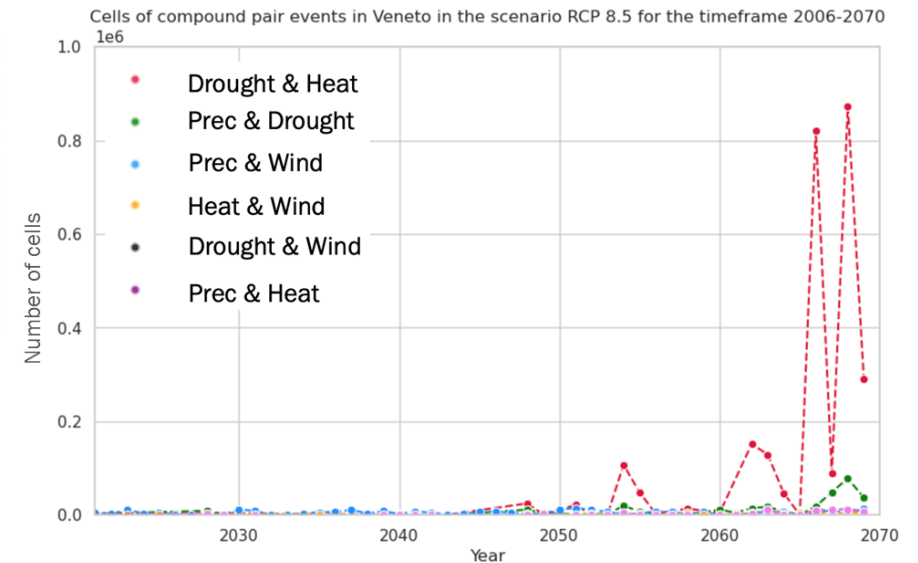
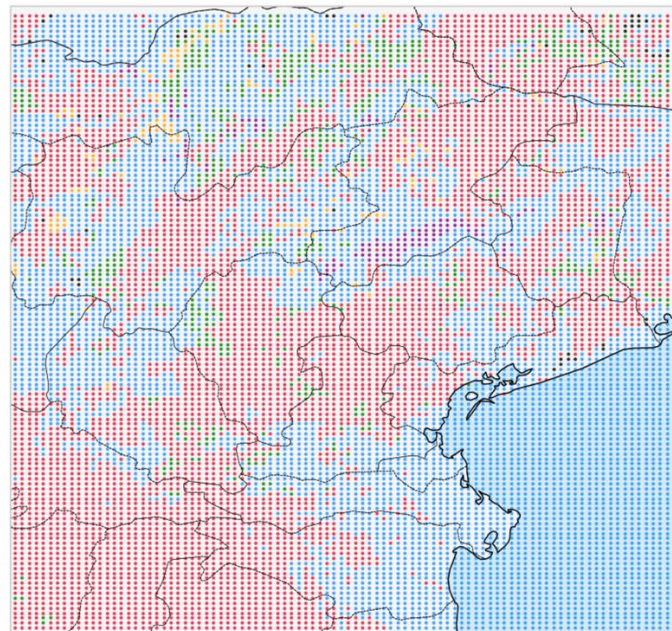


**Davide Ferrario**  
Università Ca' Foscari  
Venezia, CMCC



Friday  
12:00–12:10  
Room 0.15

Most frequent pair compound hazard per cell



*RCP 8.5 – Number of cells with compound pair events (per year)*

I want to know more about multi-risk in general! Where should I go?

# FAQ's

What makes a location susceptible to multi-hazards?

How does one hazard affect the likelihood of another hazard to occur?

Is there a method to quantify the time-lags between hazards?

How are multi-hazard impacts different from single-hazard impacts?

How does climate change affect multi-hazard events?

I want to know more about multi-risk in general! Where should I go?

How are multi-hazard impacts different from single-hazard impacts?

How does climate change affect multi-hazard events?

I want to know more about multi-risk in general! Where should I go?




NH 10.1



EDI 

Multi-hazard risk assessments: Innovative approaches for disaster risk reduction, management, and climate change adaptation.

Including NH Division Outstanding ECS Award Lecture

Convener: Silvia De Angeli<sup>ECS</sup>  | Co-conveners: Stefano Terzi<sup>ECS</sup> , Robert Sakic Trogrlic<sup>ECS</sup> , Anaïs Couasnon<sup>ECS</sup> , Judith Claassen

▶ Orals  | Thu, 18 Apr, 14:00–18:00 (CEST)  Room M2, Fri, 19 Apr, 08:30–10:15 (CEST)  Room M2

▶ Posters on site  | Attendance Fri, 19 Apr, 16:15–18:00 (CEST) | Display Fri, 19 Apr, 14:00–18:00  Hall X4



Advancing multi-(hazard)risk science:  
embracing complexity and cross-  
disciplinary

Thursday: 14:00–14:30  
Room M2



Dr. Marleen de Ruiter  
(IVM VU Amsterdam)

@Myriad\_EU



The MYRIAD-EU project has received funding from the European Union's Horizon 2020 research and innovation programme call H2020-LC-CLA-2018-2019-2020 under grant agreement number 101003276

@Myriad\_EU



Judith Claassen  
IVM VU Amsterdam  
j.n.claassen@vu.nl

