



Species diversity and drivers of arbuscular mycorrhizal fungal communities in a semi-arid mountain in China

He Zhao*, Xuanzhen Li*, Zhiming Zhang, Yong Zhao, Jiantao Yang and Yiwei Zhu

College of Forestry, Henan Agricultural University, Zhengzhou, China

*These authors contributed equally to this work.

ABSTRACT

Arbuscular mycorrhizal fungi (AMF) play an essential role in complex ecosystems. However, the species diversity and composition of AMF communities remain unclear in semi-arid mountains. Further, it is not well understood if the characteristics of AMF community assemblies differ for different habitat types, e.g., agricultural arable land, artificial forest land, natural grassland, and bush/wood land. Here, using the high-throughput technology by Illumina sequencing on the MiSeq platform, we explored the species diversity and composition of soil AMF communities among different habitat types in a semi-arid mountain (Taihang Mountain, Mid-western region of China). Then, we analyzed the effect of nutrient composition and soil texture on AMF community assembly. Our results showed that members of the *Glomus* genera were predominated in all soil types. The distance-based redundancy analysis indicated that the content of water, available phosphorus, and available potassium were the most crucial geochemical factors that significantly affected AMF communities ($p < 0.05$). The analysis of the soil texture confirmed that AMF diversity was negatively correlated with soil clay content. The comparison of AMF diversity among the various habitat types revealed that the artificial forest land had the lowest AMF diversity in comparison with other land types. Our findings suggest that there were differences in species diversity and composition of soil AMF communities among different habitat types. These findings shed new light on the characteristics of community structure and drivers of community assembly in AMF in semi-arid mountains, and point to the potential importance of different habitat types on AMF communities.

Submitted 27 October 2017
Accepted 21 November 2017
Published 8 December 2017

Corresponding author
Yong Zhao, zhaoyonghnd@163.com

Academic editor
Joseph Craine

Additional Information and
Declarations can be found on
page 12

DOI 10.7717/peerj.4155

© Copyright
2017 Zhao et al.

Distributed under
Creative Commons CC-BY 4.0

OPEN ACCESS

Subjects Biodiversity, Ecosystem Science, Microbiology, Soil Science

Keywords Illumina sequencing, AMF communities, Semi-arid field, Soil properties

INTRODUCTION

Arbuscular mycorrhizal fungi (AMF) play a high-value role for ecosystem restoration and sustainability (Herder *et al.*, 2010; Sanders, 2010; Verbruggen *et al.*, 2012). The majority of land plant species have the potential ability to form symbiotic relationships with AMF, which can significantly enhance plant growth (Lekberg & Koide, 2005), improve soil structure (Piotrowski *et al.*, 2004; Caravaca *et al.*, 2006; Wilson *et al.*, 2009), and contribute to plant resistance to environmental stress (Benjamina, Karl & Johnn, 2009; Balliu, Sallaku & Rewald, 2015). AMF also can maintain ecosystems stability and promote ecosystem

development (Larsen, Williams & Kremen, 2005; Fuhrman, 2009; Rosindell, Hubbell & Etienne, 2011). Therefore, to explore the ecological environment in diverse regions, understanding AMF diversity and biogeography will be of primary importance (Fitter, 2005; Chaudhry et al., 2012).

In recent years, many studies have reported the AMF community composition in different environmental conditions (Öpik et al., 2006; Wubet et al., 2006; Heijden & Scheublin, 2007; Lee, Lee & Young, 2008; Krüger et al., 2009). Scholars have argued that the composition of AMF communities will vary along the gradients of land-use intensity under the same climatic conditions and region of agricultural ecosystems (Dumbrell et al., 2010; Fritz et al., 2010; Lekberg et al., 2011; Mirás-Avalos et al., 2011; Meadow & Zabinski, 2012). Also, several papers have confirmed that the AMF distributions are caused by their ability to tolerate high nutrient concentrations in different habitat types (Porrás-Alfaro et al., 2007; Egertonwarburton, Johnson & Allen, 2008; Thomson, Robson & Abbott, 2010). Meanwhile, through the investigation of natural or agricultural habitats, scholars have shown that a high diversity of rhizosphere AMF was found in natural habitat (Öpik et al., 2008; Bonfim et al., 2016), and the AMF communities inhabiting plant roots tended to have a lower diversity in agricultural ecosystems (Daniell et al., 2001; Alguacil et al., 2011; Schnoor et al., 2011; Bainard et al., 2015). However, most of the previous research works focused on single ecosystems (Helgason et al., 1998; Lumini et al., 2010; Verbruggen & Toby, 2010), and there are no comparative analyses on the AMF condition among different soil types under the same climate conditions in semi-arid regions.

Hitherto, traditional studies of AMF community composition have been scarce, partly due to the limitations of spore morphological features, which are easily influenced by external disturbances (Oehl et al., 2004), such as integrity of the spores (e.g., ability to identify spores). Due to the above defects, new research technologies are constantly updated. For instance, the development of molecular methods has greatly facilitated the studies of AMF taxonomic and phylogenetic reconstruction and has enhanced the sensitivity of AMF identification and quantification (Lekberg et al., 2007; Helgason & Fitter, 2009; Balestrini et al., 2010; Gast et al., 2011). Moreover, significant improvements have been made in the analysis of AMF condition by the high-throughput technology (Margulies et al., 2006). Determining the diversity of AMF became very widespread by using regions of the small ribosomal subunit gene. Due to technology advancements, it can provide the most comprehensive reference sequence data set (Öpik et al., 2010), and the sequencing data can provide detailed analyses on AMF communities among complex habitat types (Öpik et al., 2013). In summary, the application of new technologies will greatly improve the study of AMF communities.

Thus, our study applied the high-throughput sequencing (Illumina platform) to analyze the soil AMF communities in four habitat types, including agricultural arable land, artificial forest land, natural grassland, and bush/wood land, and in contrast to the first two soil habitat types, the last two types were undisturbed (without human interference). All habitat types were located in the Taihang Mountain, which belongs to the semi-arid ecosystem. We aimed to identify the relative importance of soil characteristics on AMF diversity and illustrate the differences in AMF communities among the predominant soil types. The

research would be a valuable contribution toward a better understanding on the way human activities have changed the composition of the current AMF communities, and the results would contribute to developing a more precise guidance on local soil reclamation, vegetation restoration, and the maintenance of biodiversity in semi-arid regions.

MATERIALS AND METHODS

Study area

The research site was located in the south of Taihang Mountain (112°28′–112°30′E, 35°01′–35°03′N), a site which belongs to the semi-arid area of China. The climate in the test area is temperate continental monsoon, with an annual average temperature of 14.3 °C and an average annual sunshine rate of 54%; the elevation gradient of our study sites ranged from 231 to 432 m above sea level. Soil in the study area is cinnamon (main part is similar to ustalf USDA), and the parent rock was composed mainly of sandstone and shale. The habitat types in this study were bush/wood land, forest land, grassland, and arable land. The bush/wood land included mainly *Vitex negundo* L, *Lespedeza bicolor* Turcz and *Ziziphus jujuba* Mill. var. *spinosa* (Bunge) Hu ex H.F. Chow, Forest land included mainly *Quercus variabilis* Bl., *Platyclusus orientalis* (L.) Franco, and *Robinia pseudoacacia* L. Dominant herbaceous plants in the grassland were *Setaria viridis* (L.) Beauv., *Artemisia princeps* H. Lév. and Vaniot, *Pennisetum alopecuroides* (L.) Spreng., *Arthraxon hispidus* (Thunb.) Makino, and *Rehmannia glutinosa* (Gaetn.) Libosch. ex Fisch. et Mey. Finally, the prevalent herbaceous plants in the arable land were *Zea mays* L., *Triticum aestivum* L., *Ipomoea batatas* L., *Brassica campestris* L., and *Lycopersicon esculentum* Mill.

Sample collection

In October 2016, soil samples were collected in triplicate at four sites (W1, BW, WL, and F). The sample collection occurred at the root zone of the plant at a soil depth of 5–10 cm (Table 1). Site W1 represented the forest land soil type; site BW had bush/wood soil type; site WL was characterized by grassland soil type; and arable land soil type was represented in site F. These 12 soil samples collected were placed in sterile plastic bags and transported in freezing boxes to the laboratory, and they were stored at –70 °C until further analysis.

Soil geochemical analyses

We analyzed eight different soil factors, including soil pH, water content, available nitrogen (NH_4^+ -N), available potassium (K^+ -K) and phosphate phosphorus (PO_4^{3-} -P). Soil pH was examined by a pH meter (PX-KS06; Guangzhou Puxi Instrument, Guangzhou, China). Water content was measured by drying soil method, and the content of soil clay, silt, and sand was performed by using a Malvern Mastersizer (Mastersizer2000; Malvern Instruments, Malvern, UK). The available nitrogen and available potassium were analyzed by an Autoanalyzer (SEAL-AA3; SEAL Analytical, Milwaukee, WI, USA); phosphate phosphorus analyzed by NaHCO_3 Mo-Sb colorimetric method.

Table 1 Geochemical characteristics of the soil samples and other information of the site of the present study.

Sample sample	Soil type	Coordinates	pH	Water content (%)	Available nitrogen (mg kg ⁻¹)	Available phosphorus (mg kg ⁻¹)	Available potassium (mg kg ⁻¹)	Clay (%)	Silt (%)	Sand (%)
W1-1	Forest land	35°1'56"N 112°29'1"E	7.32	19.81	155.3	7.8	169.5	47.1	41.5	11.4
W1-2		35°2'16"N 112°28'20"E	7.41	20.24	145.3	6.9	143.4	46.2	44.5	9.3
W1-3		35°2'45"N 112°28'52"E	7.34	18.29	182.3	7.2	162.4	41.2	48.9	9.9
Average				7.36 A	19.44 B	161.0 A	7.3 B	158.4 B	44.9 AB	45.0 A
BW-1	Bush/wood	35°1'49"N 112°29'14"E	7.53	20.33	141.5	4.7	177.4	37.3	32.1	30.6
BW-2		35°2'3"N 112°29'29"E	7.41	21.14	133.2	4.8	186.4	41.2	31.5	27.3
BW-3		35°2'55"N 112°29'1"E	7.36	23.00	187.3	6.5	160.1	28.3	42.9	28.8
Average				7.43 A	21.49 B	154 A	5.3 B	174.6 B	35.6 BC	35.5 B
WL-1	Grass land	35°1'41"N 112°29'39"E	7.21	16.71	167.4	4.3	129.1	33.2	52.6	14.2
WL-2		35°2'55"N 112°29'12"E	7.34	15.90	144.3	5.1	135.4	26.4	49.6	24
WL-3		35°1'38"N 112°28'58"E	7.42	18.05	132.2	2.4	122.0	37.5	48.9	13.6
Average				7.32 A	16.88 C	148.0 A	3.93 B	128.8 C	32.37 C	50.4 A
F-1	Arable land	35°2'31"N 112°29'55"E	7.27	26.71	177.5	18.7	287.4	55.2	39.5	5.3
F-2		35°2'12"N 112°29'38"E	7.45	23.71	183.5	22.5	254.3	50.1	43.6	6.3
F-3		35°2'43"N 112°29'19"E	7.33	23.95	182.3	30.2	299.1	47.8	47.5	4.7
Average				7.35 A	24.79 A	181.1 A	23.8 A	280.3 A	51.0 A	43.53 AB

Notes.

Values (eg. A, B, C) followed by the same letters in the same column was not significantly different ($p < 0.05$).

Molecular analyses DNA extraction

A total of 50 mg soil was used for metagenomic DNA extraction in each sample, using the Fast DNA Isolation Kit (Q-BIOgene; Heidelberg, Germany). The extracts were stored at -20°C for PCR. 1.0% agarose gels for checking DNA concentration and purity.

Miseq sequencing step

Using the 18S rRNA gene and primer sets of AMV4.5N Forward 5'-AAGCTCGTAGTT-GAATTTCG-3' and AMDG R 5'-CCCAACTATCCCTATTAATCAT-3' to amplify the sequences (from soil DNA extracts), the primer had been reported to be acceptable in several previous studies (*Sato et al., 2005*). The initial PCR reactions were similar to the existing studies of (*Xiao et al., 2016*), including :25 μL total volumes, 1–2 μL DNA template, 250 mM dNTPs, 0.25 mM of primer, 1 \times reaction buffer and 0.5U Phusion DNA Polymerase.

The reactions used a 2720 model Thermal Cycler, and initial PCR amplification was conducted under the steps below: 94 $^{\circ}\text{C}$ for 2-min, then 25 cycles of 30-s denaturation at 94 $^{\circ}\text{C}$, 30-s annealing at 56 $^{\circ}\text{C}$, 30-s extension at 72 $^{\circ}\text{C}$, 5-min extension at 72 $^{\circ}\text{C}$. The second step PCR used a template, which come from the first 5 μL product (without dilution). The second step PCR include: one cycle of 3-min at 94 $^{\circ}\text{C}$, then 8 cycles of 30-s at 94 $^{\circ}\text{C}$, 56 $^{\circ}\text{C}$ for 30-s and 72 $^{\circ}\text{C}$ for 30-s, and a 5-min extension at 72 $^{\circ}\text{C}$. The PCR products were separated by electrophoresis (1.5% agarose gel in 0.5 \times TBE) and purified using a gel xtraction kit (Axygen Biosciences, Corning, NY, USA), then the libraries were

sequenced by PE300 sequencing on MiSeq v3 Reagent Kit (Illumina) platform (at Tiny Gene Company, Shanghai).

Bioinformatics methods

The sequence reads were analyzed by the combination of software Mothur version 1.33.3, UPARSE (USEARCH version v8.1.1756) and R 3.2.2 (*R Development Core Team, 2015*), the original FASTQ files were demultiplexed through the barcode (*Schloss et al., 2009*). The PE reads for all samples were merged based on mothur. The low quality contigs were removed based on screen.seqs command by the settings filter (maxambig = 0, minlength = 200, maxlength = 580, the higher threshold can protect some longer sequences, which may be the correct fragment, maxhomop = 8). The decoded data information was aggregated (97% homology) to operational taxonomic units (OTUs) (*Edgar, 2013*).

BLAST analysis was conducted using the “Nucleotide collection (nr/nt)” database (https://blast.ncbi.nlm.nih.gov/Blast.cgi?PAGE_TYPE=BlastSearch). No threshold was set for *E* values, alignment length and identity settings. For each OTU representative sequence, a list of top BLAST hits was compiled. Uncultured clones were deleted from the list of top hits. The BLAST hit getting the highest score was identified as the match’s species.

Statistical analyses

For the alpha-diversity analysis, Mothur version 1.33.3 software (*Schloss et al., 2009*) was used to analyze the OTU richness, Coverage, Chao, and Shannon’s indices as reported earlier by *Schloss et al. (2009)*. The values of soil properties and diversity parameters were statistically analysed by SPSS V. 19 software (one-way ANOVA) (SPSS; IBM Corp., Armonk, NY, USA).

The clustering method was used with R v. 3.1.1 software to identify the AMF relationship (based on OTU abundance-based). Further, the indicator species analysis was utilized to identify the AMF communities associated with various habitat types (*Dufrene & Legendre, 1997*).

Using the Canoco software (Canoco for Windows 4.5 package) (*Braak & Smilauer, 2002*), we utilized Monte Carlo permutation and distance-based redundancy (db-RDA) tests to explain the correlation between soil AMF and geochemical factors. In addition, the heatmap results of the abundance percentages of AMF genera were obtained by Mothur version 1.33.3 software. The raw sequence information has been deposited into the NCBI database (accession number [SRP116770](#)).

RESULTS

Soil properties

For the eight geochemical factors measured, the arable land obtained the maximum values of water content, available phosphorus and available potassium (site F). Meanwhile, the minimum values of water content and available phosphorus were established in the grassland (site WL). In the bush/wood land (site BW), the maximum values of sand content (average 28.9%), but minimum silt content (35.5%) were established ([Table 1](#)).

Table 2 The results of sequence data in the present study.

	Soil type	Number of total sequence	Number of AMF OTUs	Coverage (%)	Chao's index	Shannon's index
W1-1	Forest land	26,866	62	99	67	2.93
W1-2		27,298	71	99	73	3.15
W1-3		28,493	60	99	60	2.53
Average					67 A	2.87 B
BW-1	Bush/ wood	31,391	73	99	74	3.46
BW-2		35,206	69	99	70	3.38
BW-3		32,153	67	99	68	3.42
Average					70 A	3.42 A
WL-1	Grass land	29,593	74	99	76	3.52
WL-2		28,148	83	99	87	3.49
WL-3		28,621	76	99	79	3.51
Average					81 A	3.51 A
F-1	Arable land	18,900	52	99	67	3.46
F-2		19,135	62	99	88	3.38
F-3		15,095	54	99	55	3.45
Average					70 A	3.43 A

Notes.

The OTUs were defined at the cutoff 3% difference in sequence. Using the one-way analysis of variance (ANOVA) to evaluate statistical significance and results, followed by Tukey's HSD test. Capital direction symbols (eg. A, B, C) indicate full (5%) significance.

AMF diversity data and community composition

In the current study, we have identified a total of 532,841 sequences and 803 OTUs from the total dataset; there were 320,899 sequences belonged to phylum Glomeromycotina (accounting for 60.2%). The number of sequences in each of the samples ranged from 15,095 to 35,206, and the number of AMF OTUs ranged from 52 to 83 (genetic distances of 3%). The OTUs' coverage in all soil types reached 99% (Table 2). On the basis of the OTU richness calculated by Chao's index, the grassland observed the greatest AMF value (site WL: 81). Through the analysis of Shannon's index, we discovered that the largest AMF diversity was also present in the grassland (site WL: 3.49–3.52 with an average value of 3.51), followed by the arable land (site F: 3.38–3.46 with an average value of 3.43), bush/wood land (site BW: 3.38–3.46 with average 3.42), and the forest land soils (site W1: 2.53–3.15 with an average value of 2.87) (Table 2).

Some variations in AMF community composition at the genus level were also detected among all soil samples. The 119 OTUs that could be classified were affiliated with ten AMF genera, whereas those that could not be identified were assigned as unclassified. The *Glomus* were the most abundant genera in all samples: 60%–75% in grassland, 70%–75% in arable land, 75%–80% in bush/wood, and 50%–70% in forest land. Meanwhile, their levels varied in the different soil types. *Ambispora* were found in all samples, but a greater abundance was detected in the grassland and arable land samples than in those of the bush/wood and forest land soils (Fig. 1).

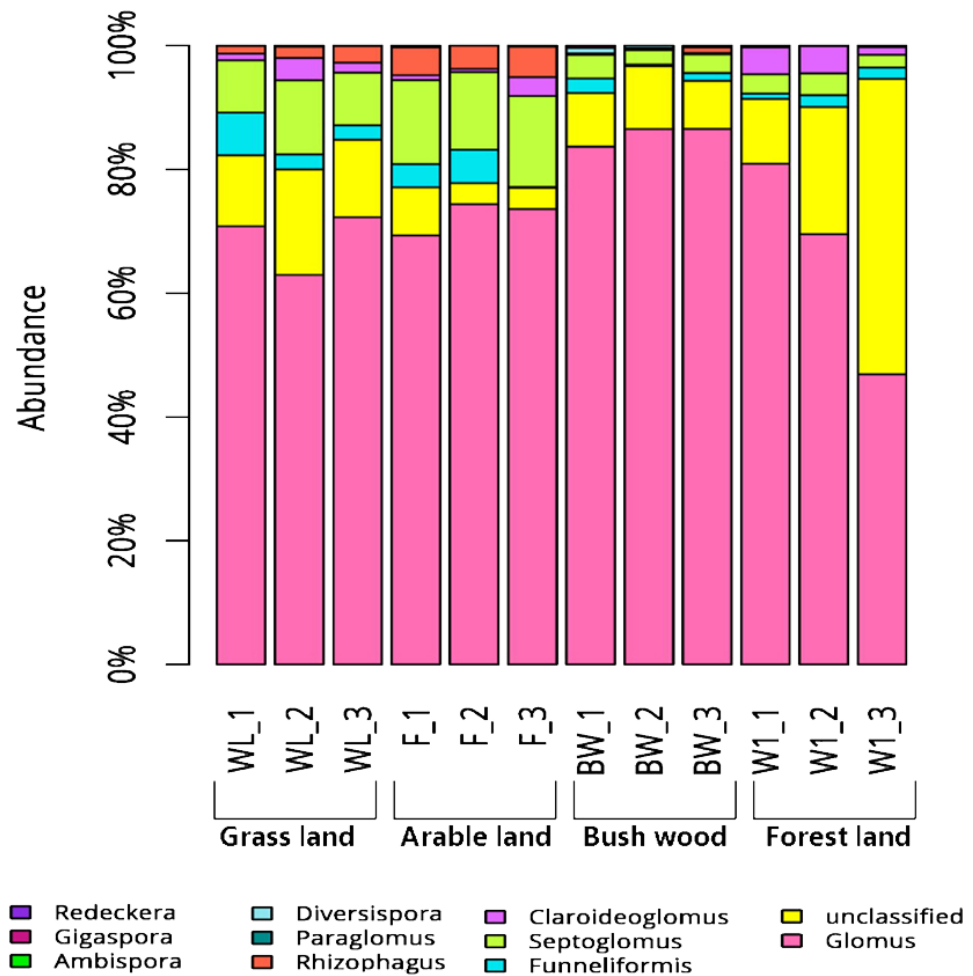


Figure 1 Abundance percentages of AMF genera for all soil samples.

Full-size DOI: 10.7717/peerj.4155/fig-1

Correlation among the three factors (AMF communities, soil types and environmental condition)

To determine the differences in soil AMF community, the OTU cluster analysis showed that the 12 soil samples were divided into four Soil Types (Fig. 2), and the indicator species analysis revealed that there were 60 AMF indicators (indicator value > 0.25, $p < 0.05$) in this four groups types, it mainly included bush/wood (*Glomus* and *Diversispora* taxa), arable land (*Glomus*, *Septoglomus* and *Rhizophagus* taxa), grassland (*Glomus* and *Septoglomus* taxa), forest land (*Glomus* and *Paraglomus* taxa) (Table S1).

The top 50 OTUs of all samples were selected and their abundances were compared by heatmap software. It revealed the relative distributions and abundances of the top 50 OTUs in all samples (Fig. 3). More detailed information about the top 50 OTUs was presented in Table S2. There is also a listing of all AMF OTUs and their closest matches in Table S3.

The distance-based redundancy analysis (db-RDA) showed that there was a significant correlation between the combination of eight environmental factors and soil AMF

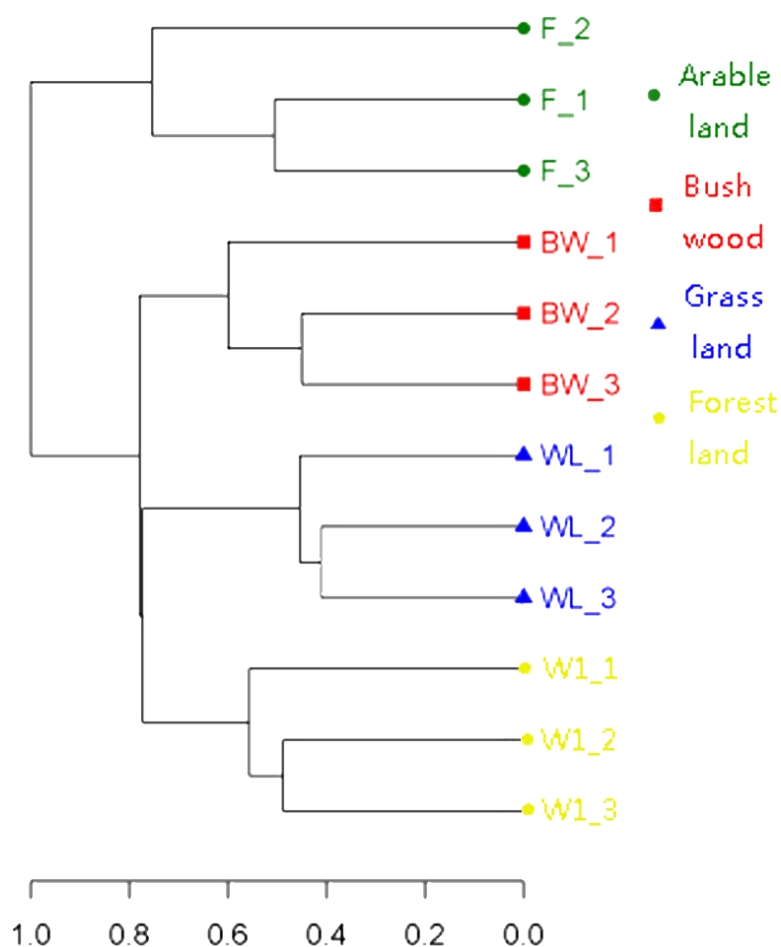


Figure 2 Clustering analysis of AMF communities based on OTU abundance for each soil.

Full-size DOI: [10.7717/peerj.4155/fig-2](https://doi.org/10.7717/peerj.4155/fig-2)

community structure, that 81.9% of the soil community variation was attributed to all environmental factors (Fig. 4 and Table 3). However, using the Monte Carlo permutation test, we found that water content ($r^2 = 0.7332$, $p < 0.01$), available phosphorus ($r^2 = 0.7576$, $p < 0.01$), available potassium ($r^2 = 0.7973$, $p < 0.01$), silt ($r^2 = 0.6461$, $p < 0.05$), and sand ($r^2 = 0.6293$, $p < 0.05$) were important properties (Table 3).

DISCUSSION

As mentioned earlier, the study area was located in the South Taihang Mountains of China, whose climate characterizes the region as a typical semi-arid climate zone. Under natural conditions, the thin soil layer, low forest coverage and much gravel are the characteristics of this area. Its forest types are mainly dominated by human intervention of *Quercus variabilis* Bl and *Platycladus orientalis* (L.); the vegetation is poor and only limited species could be planted (Zhao, 2007). Thus, improving local soil conditions and promoting plant growth are urgent tasks. However, some information had remained unexplored for the Taihang Mountain area, such as the distribution of AMF communities, the variation of

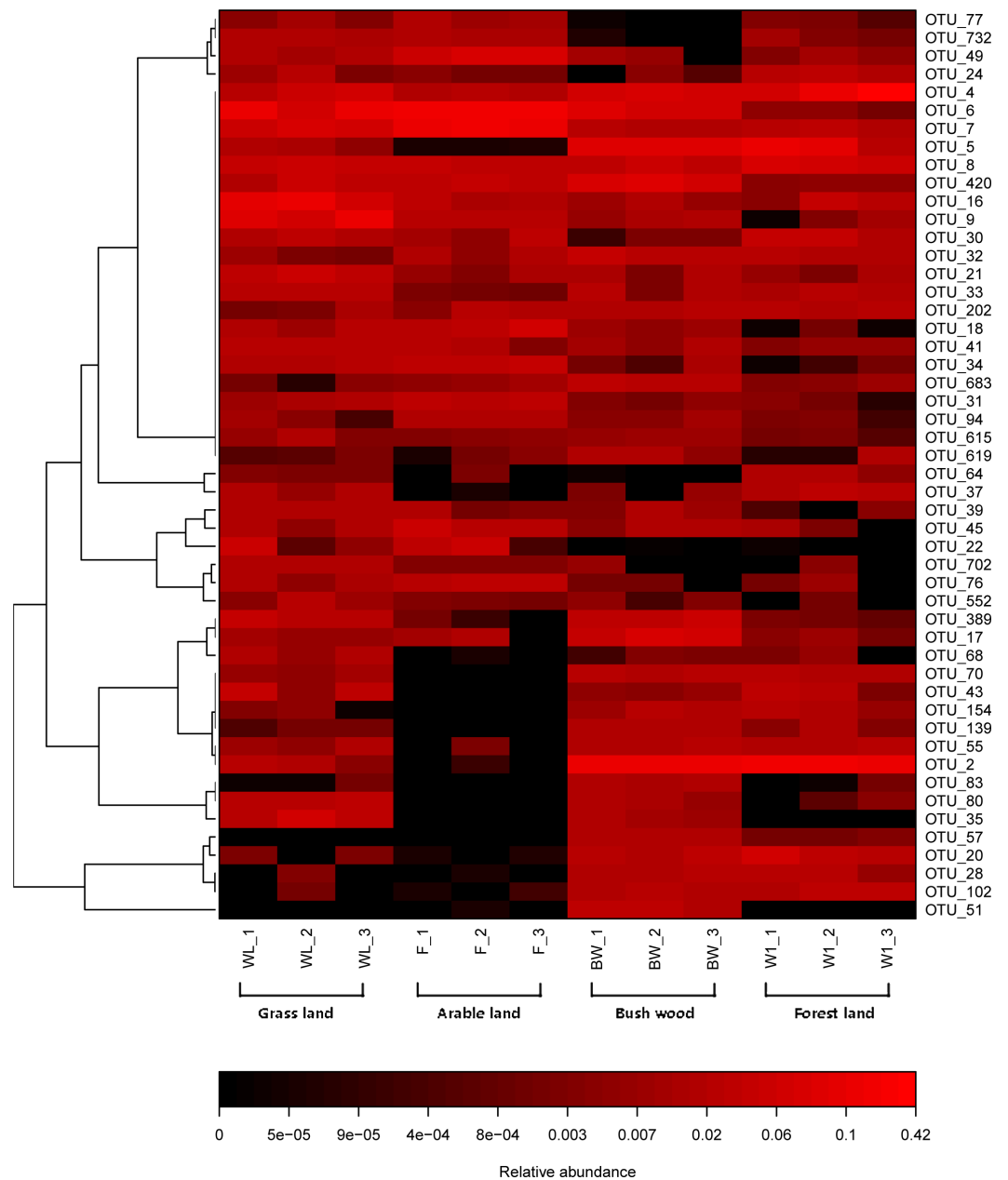


Figure 3 Heat map of top 50 OTUs in all samples. The color intensity (log scale) in each panel shows the percentage of a genus in a sample, referring to color key at the bottom.

Full-size DOI: [10.7717/peerj.4155/fig-3](https://doi.org/10.7717/peerj.4155/fig-3)

AMF diversity, and the influence of various soil types on AMF composition. Therefore, in this study, we investigated the AMF communities among the predominant soil types in the South Taihang Mountain region. The results could be a valuable reference for improving the local ecological environment.

By analyzing the results of the four different soil types, the research showed that the diversity of AMF communities in undisturbed grassland soil type was greater than that in

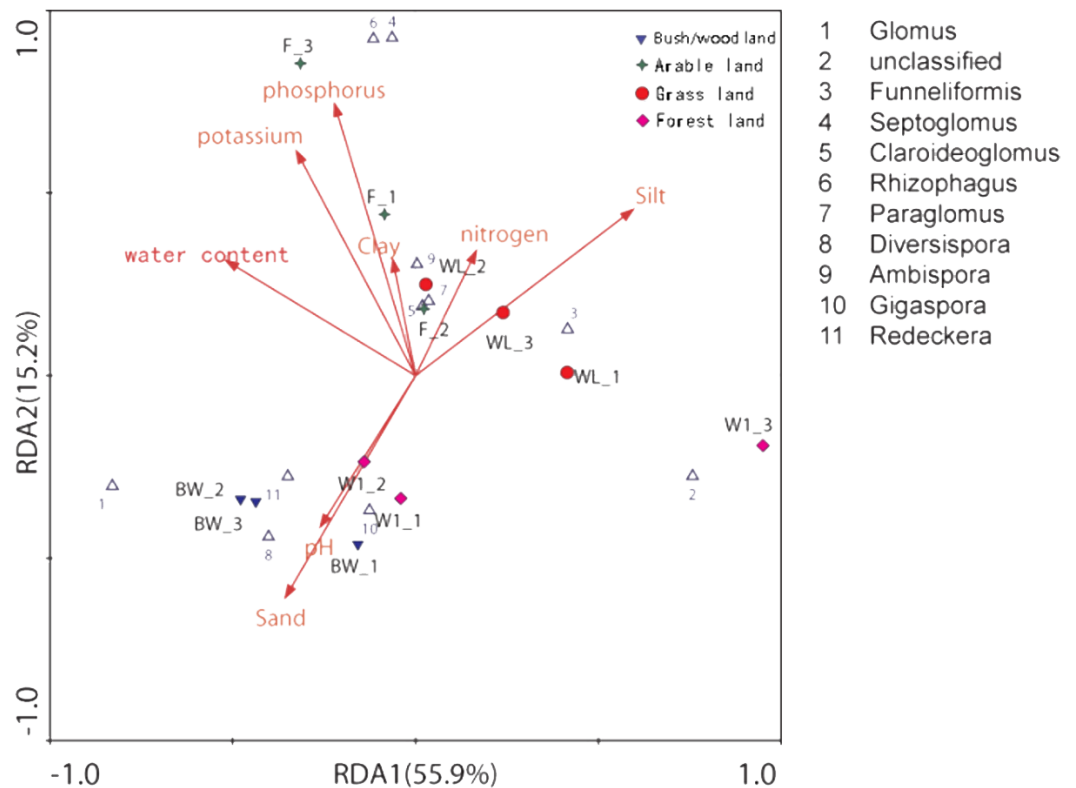


Figure 4 Distance-based redundancy (db-RDA) tests used to interpret the correlations between the AMF communities and environmental properties.

Full-size [DOI: 10.7717/peerj.4155/fig-4](https://doi.org/10.7717/peerj.4155/fig-4)

Table 3 Monte Carlo permutation tests were used to detect the relationship between community composition and soil variables.

	RDA1	RDA2	r^2	<i>P</i> -value
pH	−0.2607	−0.4144	0.2053	0.353
Water content	−0.5188	0.3150	0.7332	0.004**
Available nitrogen	0.1659	0.3414	0.3096	0.186
Available phosphorus	−0.2218	0.7446	0.7576	0.004**
Available potassium	−0.3262	0.6153	0.7973	0.004**
Clay	−0.0622	0.3178	0.3611	0.156
Silt	0.5950	0.4549	0.6461	0.015*
Sand	−0.3564	−0.6083	0.6293	0.013*

Notes.

*Correlation is significant at the 0.05 level.

**Correlation is significant at the 0.01 level.

P-values based on 999 permutations.

artificial forest land (Table 2). That was consistent with Öpik *et al.* (2008), who discovered that rich biological species composition and low external disturbance may lead to higher diversity of rhizosphere AMF of the natural vegetation soil. Our results showed that the value of Shannon's index in arable land was larger than that in artificial forest land. This outcome might have been caused by the cultivation practices implemented by the farmers, including the application of farmyard manure (food residues, livestock manure, etc.), which increased the number of microbial communities by raising the level of available nutrients (Helgason & Fitter, 2009). Indeed, it is generally accepted that the organic agriculture farming methods are regarded as a useful measure to increase AMF diversity (Aroca, Porcel & Ruiz-Lozano, 2007), and farmers in that region usually apply farmyard manure with cultivation methods that are closed to organic agriculture farming. On the other hand, probably because the growth and reproduction of specific AMF communities requiring particular host plant species, it leads to a less abundant community under a single artificial plantation habitat (Long *et al.*, 2010). In general, human disturbance caused changes in the forest land environment, which reduced the transportation and distribution of AMF communities (Yuan *et al.*, 2008), and the artificial forest land had the lowest AMF diversity in comparison with other land types.

Meanwhile, the results of the sequence data analysis of AMF community composition showed that members of both genera *Septoglomus* and *Glomus* existed in different soil types, including forest land, bush/wood, grassland, and arable land. Nevertheless, the representatives of *Glomus* were identified to be the main genus, and although *Glomus*, *Diversispora*, *Septoglomus*, *Rhizophagus* and *Paraglomus* were found in soils, only *Glomus* taxa served as indicator species for each habitat. These results are similar to previously published research that confirmed that the species of *Glomus* were the most abundant in the AMF assemblage (Oehl *et al.*, 2005). The influence of certain factors may be the reason why *Glomus* was the dominant members in the AMF assemblage among those of other genera. Some researchers revealed that the species of *Glomus* genus can usually produce large numbers of spores and hypha fragments, which can colonize and extensively spread onto the roots of plants (Öpik *et al.*, 2006). *Glomus* has also a certain resistance in complex environments (Miransari *et al.*, 2008; Bever *et al.*, 2009; Barto *et al.*, 2011). Therefore, these features facilitate the survival and spread of *Glomus* genus members in a semi-arid mountain, and the emergence of this phenomenon is also the result of adaptation to the local ecological environment.

Moreover, our investigation established that water content is a significant factor which has an obvious effect on the AMF communities. Scholars have shown that the variations in the water content can contribute to changes in the physiological status of local AMF and its ecological niche directly (Sieverding, Toro & Mosquera, 1989), probably because the water was essential for the reproductive and metabolic processes. Thus, the water content can indirectly exert an impact on the distribution of AMF communities. In addition, our research also confirmed that there are significant relationships between the available phosphorus, available potassium, and soil AMF community structure. These interactions were most likely attributable to the fact that soil phosphorus may stimulate the spore germination and hyphal growth of AMF (Miranda & Harris, 1994), and the potassium

has the ability to increase the infection rate of AMF under drought stress (Wei, 2016). In general, soil nutrients can have on the growth of local AMF communities as the lack of nutrients inhibits the production and separation of spores (Zaller, Frank & Drapela, 2011). Thus, this work confirmed that environmental factors can drive the composition and distribution of AMF communities.

Furthermore, the composition of AMF communities seems to have been strongly influenced by the soil texture distribution, and our results showed that the content of silt and sand were significantly related to the soil AMF community (Table 1). The AMF diversity was higher in the samples from low-clay but high-sand content soil types. The appearance of the result was probably due to the fact that AMF is an aerobic organism, and the lower clay content provided better aeration, which was advantageous for plant root growth and soil humus decomposition, leading also to accelerated fungal propagation (Torrecillas et al., 2014). The research confirmed that AMF communities was negatively correlated with soil clay content.

CONCLUSIONS

In conclusion, this study first delineated the species diversity and composition of AMF communities in Taihang Mountain, China. The members of the *Glomus* genus were predominant in all soil types. The findings also suggested that nutrient composition and soil texture were the most important factors affecting AMF communities. Moreover, there were differences in species diversity and composition of soil AMF communities among different habitat types. These findings shed new light on the characteristics of community structure and drivers of community assembly in AMF in semi-arid mountains, and point to the potential importance of different habitat types on AMF communities.

ACKNOWLEDGEMENTS

The authors are grateful to the staff of the Xiaolangdi Ecological Station in Henan Province, China, for the provision of the soil materials and testing ground. We also would like to thank the Tiny Gene Bio-Tech (Shanghai) Co., Ltd. for their high-throughput sequence technology.

ADDITIONAL INFORMATION AND DECLARATIONS

Funding

This work was supported by the National Natural Science Foundation of China (number: 31270750). The funders had no role in study design, data collection and analysis, decision to publish, or preparation of the manuscript.

Grant Disclosures

The following grant information was disclosed by the authors:
National Natural Science Foundation of China: 31270750.

Competing Interests

The authors declare there are no competing interests.

Author Contributions

- He Zhao performed the experiments, analyzed the data, wrote the paper, prepared figures and/or tables.
- Xuanzhen Li performed the experiments, wrote the paper, reviewed drafts of the paper.
- Zhiming Zhang contributed reagents/materials/analysis tools.
- Yong Zhao conceived and designed the experiments.
- Jiantao Yang contributed reagents/materials/analysis tools, prepared figures and/or tables.
- Yiwei Zhu performed the experiments.

DNA Deposition

The following information was supplied regarding the deposition of DNA sequences:

SRA: [SRP116770](#).

Data Availability

The following information was supplied regarding data availability:

The raw sequence information have been deposited into the NCBI database (accession number [SRP116770](#)).

Supplemental Information

Supplemental information for this article can be found online at <http://dx.doi.org/10.7717/peerj.4155#supplemental-information>.

REFERENCES

- Alguacil MM, Torrecillas E, Caravaca F, Fernández DA, Azcón R, Roldán A. 2011.** The application of an organic amendment modifies the arbuscular mycorrhizal fungal communities colonizing native seedlings grown in a heavy-metal-polluted soil. *Soil Biology & Biochemistry* **43**:1498–1508 DOI [10.1016/j.soilbio.2011.03.026](https://doi.org/10.1016/j.soilbio.2011.03.026).
- Aroca R, Porcel R, Ruiz-Lozano JM. 2007.** How does arbuscular mycorrhizal symbiosis regulate root hydraulic properties and plasma membrane aquaporins in *Phaseolus vulgaris* under drought, cold or salinity stresses? *New Phytologist* **173**:808–816 DOI [10.1111/j.1469-8137.2006.01961.x](https://doi.org/10.1111/j.1469-8137.2006.01961.x).
- Bainard LD, Dai M, Gomez EF, Torres-Arias Y, Bainard JD, Sheng M, Eilers W, Hamel C. 2015.** Arbuscular mycorrhizal fungal communities are influenced by agricultural land use and not soil type among the Chernozem great groups of the Canadian Prairies. *Plant and Soil* **387**:351–362 DOI [10.1007/s11104-014-2288-1](https://doi.org/10.1007/s11104-014-2288-1).
- Balestrini R, Magurno F, Walker C, Lumini E, Bianciotto V. 2010.** Cohorts of arbuscular mycorrhizal fungi (AMF) in *Vitis vinifera*, a typical Mediterranean fruit crop. *Environmental Microbiology Reports* **2**:594–604 DOI [10.1111/j.1758-2229.2010.00160.x](https://doi.org/10.1111/j.1758-2229.2010.00160.x).

- Balliu A, Sallaku G, Rewald B. 2015.** AMF inoculation enhances growth and improves the nutrient uptake rates of transplanted, salt-stressed tomato seedlings. *Sustainability* 7:15967–15981 DOI [10.3390/su71215799](https://doi.org/10.3390/su71215799).
- Barto EK, Hilker M, Müller F, Mohny BK, Weidenhamer JD, Rillig MC. 2011.** The fungal fast lane: common mycorrhizal networks extend bioactive zones of allelochemicals in soils. *PLOS ONE* 6:e27195 DOI [10.1371/journal.pone.0027195](https://doi.org/10.1371/journal.pone.0027195).
- Benjamina S, Karl C, Johnn K. 2009.** Plant and fungal identity determines pathogen protection of plant roots by arbuscular mycorrhizas. *Journal of Ecology* 97:1274–1280 DOI [10.1111/j.1365-2745.2009.01557.x](https://doi.org/10.1111/j.1365-2745.2009.01557.x).
- Bever JD, Richardson SC, Lawrence BM, Holmes J, Watson M. 2009.** Preferential allocation to beneficial symbiont with spatial structure maintains mycorrhizal mutualism. *Ecology Letters* 12:13–21 DOI [10.1111/j.1461-0248.2008.01254.x](https://doi.org/10.1111/j.1461-0248.2008.01254.x).
- Bonfim JA, Vasconcellos RL, Gumiere T, De LCMD, Oehl F, Nogueira Cardoso EJ. 2016.** Diversity of arbuscular mycorrhizal fungi in a Brazilian atlantic forest toposequence. *Microbial Ecology* 71:164 DOI [10.1007/s00248-015-0661-0](https://doi.org/10.1007/s00248-015-0661-0).
- Braak CJFT, Smilauer P. 2002.** *CANOCO reference manual and CanoDraw for windows user's guide: software for canonical community ordination (version 4.5)*. Wageningen: Biometris.
- Caravaca F, Alguacil MM, Azcon R, Roldan A. 2006.** Formation of stable aggregates in rhizosphere soil of *Juniperus oxycedrus*: effect of AM fungi and organic amendments. *Applied Soil Ecology* 33:30–38 DOI [10.1016/j.apsoil.2005.09.001](https://doi.org/10.1016/j.apsoil.2005.09.001).
- Chaudhry V, Rehman A, Mishra A, Chauhan PS, Nautiyal CS. 2012.** Changes in bacterial community structure of agricultural land due to long-term organic and chemical amendments. *Microbial Ecology* 64:450–460 DOI [10.1007/s00248-012-0025-y](https://doi.org/10.1007/s00248-012-0025-y).
- Daniell TJ, Husband R, Fitter AH, Young JPW. 2001.** Molecular diversity of arbuscular mycorrhizal fungi colonising arable crops. *Fems Microbiology Ecology* 36:203–209 DOI [10.1111/j.1574-6941.2001.tb00841.x](https://doi.org/10.1111/j.1574-6941.2001.tb00841.x).
- Dufrene M, Legendre P. 1997.** Species assemblages and indicator species: the need for a flexible asymmetrical approach. *Ecological Monographs* 67:345–366.
- Dumbrell AJ, Nelson M, Helgason T, Dytham C, Fitter AH. 2010.** Idiosyncrasy and overdominance in the structure of natural communities of arbuscular mycorrhizal fungi: is there a role for stochastic processes? *Journal of Ecology* 98:419–428 DOI [10.1111/j.1365-2745.2009.01622.x](https://doi.org/10.1111/j.1365-2745.2009.01622.x).
- Edgar RC. 2013.** UPARSE: highly accurate OTU sequences from microbial amplicon reads. *Nature Methods* 10:996–998 DOI [10.1038/nmeth.2604](https://doi.org/10.1038/nmeth.2604).
- Egertonwarburton LM, Johnson NC, Allen EB. 2008.** Mycorrhizal community dynamics following nitrogen fertilization: a cross-site test in five grasslands. *Ecological Monographs* 77:527–544.
- Fitter AH. 2005.** Presidential address: darkness visible: reflections on underground ecology. *Journal of Ecology* 93:231–243 DOI [10.1111/j.0022-0477.2005.00990.x](https://doi.org/10.1111/j.0022-0477.2005.00990.x).
- Fritz O, Endre L, Arno B, Karl S, Robert B, Marcelvander H, Ewald S. 2010.** Soil type and land use intensity determine the composition of arbuscular

- mycorrhizal fungal communities. *Soil Biology & Biochemistry* **42**:724–738
DOI [10.1016/j.soilbio.2010.01.006](https://doi.org/10.1016/j.soilbio.2010.01.006).
- Fuhrman JA. 2009.** Microbial community structure and its functional implications. *Nature* **459**:193–199 DOI [10.1038/nature08058](https://doi.org/10.1038/nature08058).
- Gast CJVD, Gosling P, Tiwari B, Bending GD. 2011.** Spatial scaling of arbuscular mycorrhizal fungal diversity is affected by farming practice. *Environmental Microbiology* **13**:241–249 DOI [10.1111/j.1462-2920.2010.02326.x](https://doi.org/10.1111/j.1462-2920.2010.02326.x).
- Heijden MGAVD, Scheublin TR. 2007.** Functional traits in mycorrhizal ecology: their use for predicting the impact of arbuscular mycorrhizal fungal communities on plant growth and ecosystem functioning. *New Phytologist* **174**:244–250 DOI [10.1111/j.1469-8137.2007.02041.x](https://doi.org/10.1111/j.1469-8137.2007.02041.x).
- Helgason T, Daniell TJ, Husband R, Fitter AH, Young JPW. 1998.** Ploughing up the wood-wide web? *Nature* **394**:431–431 DOI [10.1038/28764](https://doi.org/10.1038/28764).
- Helgason T, Fitter AH. 2009.** Natural selection and the evolutionary ecology of the arbuscular mycorrhizal fungi (Phylum Glomeromycota). *Journal of Experimental Botany* **60**:2465–2480 DOI [10.1093/jxb/erp144](https://doi.org/10.1093/jxb/erp144).
- Herder GD, Isterdael GV, Beeckman T, Smet ID. 2010.** The roots of a new green revolution. *Trends in Plant Science* **15**:600–607 DOI [10.1016/j.tplants.2010.08.009](https://doi.org/10.1016/j.tplants.2010.08.009).
- Krüger M, Stockinger H, Krüger C, Schüßler A. 2009.** DNA-based species level detection of Glomeromycota: one PCR primer set for all arbuscular mycorrhizal fungi. *New Phytologist* **183**:212–223 DOI [10.1111/j.1469-8137.2009.02835.x](https://doi.org/10.1111/j.1469-8137.2009.02835.x).
- Larsen TH, Williams NM, Kremen C. 2005.** Extinction order and altered community structure rapidly disrupt ecosystem functioning. *Ecology Letters* **8**:538–547 DOI [10.1111/j.1461-0248.2005.00749.x](https://doi.org/10.1111/j.1461-0248.2005.00749.x).
- Lee J, Lee S, Young JPW. 2008.** Improved PCR primers for the detection and identification of arbuscular mycorrhizal fungi. *Fems Microbiology Ecology* **65**:339–349 DOI [10.1111/j.1574-6941.2008.00531.x](https://doi.org/10.1111/j.1574-6941.2008.00531.x).
- Lekberg Y, Koide RT. 2005.** Is plant performance limited by abundance of arbuscular mycorrhizal fungi? A meta-analysis of studies published between 1988 and 2003. *New Phytologist* **168**:189–204.
- Lekberg Y, Koide RT, Rohr JR, Aldrich-Wolfe L, Morton JB. 2007.** Role of niche restrictions and dispersal in the composition of arbuscular mycorrhizal fungal communities. *Journal of Ecology* **95**:95–105 DOI [10.1111/j.1365-2745.2006.01193.x](https://doi.org/10.1111/j.1365-2745.2006.01193.x).
- Lekberg Y, Meadow J, Rohr JR, Redecker D, Zabinski CA. 2011.** Importance of dispersal and thermal environment for mycorrhizal communities: lessons from Yellowstone National Park. *Ecology* **92**:1292–1302 DOI [10.1890/10-1516.1](https://doi.org/10.1890/10-1516.1).
- Long LK, Yao Q, Guo J, Yang RH, Huang YH, Zhu HH. 2010.** Molecular community analysis of arbuscular mycorrhizal fungi associated with five selected plant species from heavy metal polluted soils. *European Journal of Soil Biology* **46**:288–294 DOI [10.1016/j.ejsobi.2010.06.003](https://doi.org/10.1016/j.ejsobi.2010.06.003).
- Lumini E, Orgiazzi A, Borriello R, Bonfante P, Bianciotto V, Bonfante P, Visick K, Ohkuma M. 2010.** Disclosing arbuscular mycorrhizal fungal biodiversity in soil

- through a land-use gradient using a pyrosequencing approach. *Environmental Microbiology* **12**:2165–2179.
- Margulies M, Egholm M, Altman WE, Attiya S, Bader JS, Bembien LA, Berka J, Braverman MS, Chen YJ, Chen Z. 2006.** Genome sequencing in microfabricated high-density picolitre reactors. *Nature* **437**:376–380.
- Meadow JF, Zabinski CA. 2012.** Linking symbiont community structures in a model arbuscular mycorrhizal system. *New Phytologist* **194**:800–809
DOI [10.1111/j.1469-8137.2012.04096.x](https://doi.org/10.1111/j.1469-8137.2012.04096.x).
- Miranda JCCD, Harris PJ. 1994.** Effects of soil phosphorus on spore germination and hyphal growth of arbuscular mycorrhizal fungi. *New Phytologist* **128**:103–108
DOI [10.1111/j.1469-8137.1994.tb03992.x](https://doi.org/10.1111/j.1469-8137.1994.tb03992.x).
- Miransari M, Bahrami HA, Rejali F, Malakouti MJ. 2008.** Using arbuscular mycorrhiza to alleviate the stress of soil compaction on wheat (*Triticum aestivum* L.) growth. *Soil Biology & Biochemistry* **40**:1197–1206 DOI [10.1016/j.soilbio.2007.12.014](https://doi.org/10.1016/j.soilbio.2007.12.014).
- Mirás-Avalos JM, Antunes PM, Koch A, Khosla K, Klironomos JN, Dunfield KE. 2011.** The influence of tillage on the structure of rhizosphere and root-associated arbuscular mycorrhizal fungal communities. *Pedobiologia* **54**:235–241
DOI [10.1016/j.pedobi.2011.03.005](https://doi.org/10.1016/j.pedobi.2011.03.005).
- Oehl F, Sieverding E, Ineichen K, Ris EA, Boller T, Wiemken A. 2005.** Community structure of arbuscular mycorrhizal fungi at different soil depths in extensively and intensively managed agroecosystems. *New Phytologist* **165**:273–283.
- Oehl F, Sieverding E, Mäder P, Dubois D, Ineichen K, Boller T, Wiemken A. 2004.** Impact of long-term conventional and organic farming on the diversity of arbuscular mycorrhizal fungi. *Oecologia* **138**:574–583 DOI [10.1007/s00442-003-1458-2](https://doi.org/10.1007/s00442-003-1458-2).
- Öpik M, Moora M, Liira J, Zobel M. 2006.** Composition of root-colonizing arbuscular mycorrhizal fungal communities in different ecosystems around the globe. *Journal of Ecology* **94**:778–790 DOI [10.1111/j.1365-2745.2006.01136.x](https://doi.org/10.1111/j.1365-2745.2006.01136.x).
- Öpik M, Moora M, Zobel M, Saks U, Wheatley R, Wright F, Daniell T. 2008.** High diversity of arbuscular mycorrhizal fungi in a boreal herb-rich coniferous forest. *New Phytologist* **179**:867–876 DOI [10.1111/j.1469-8137.2008.02515.x](https://doi.org/10.1111/j.1469-8137.2008.02515.x).
- Öpik M, Vanatoa A, Vanatoa E, Moora M, Davison J, Kalwij JM, Reier U, Zobel M. 2010.** The online database MaarjAM reveals global and ecosystemic distribution patterns in arbuscular mycorrhizal fungi (Glomeromycota). *New Phytologist* **188**:223–241 DOI [10.1111/j.1469-8137.2010.03334.x](https://doi.org/10.1111/j.1469-8137.2010.03334.x).
- Öpik M, Zobel M, Cantero JJ, Davison J, Facelli JM, Hiiesalu I, Jairus T, Kalwij JM, Koorem K, Leal ME. 2013.** Global sampling of plant roots expands the described molecular diversity of arbuscular mycorrhizal fungi. *Mycorrhiza* **23**:411–430
DOI [10.1007/s00572-013-0482-2](https://doi.org/10.1007/s00572-013-0482-2).
- Piotrowski JS, Denich T, Klironomos JN, Graham JM, Rillig MC. 2004.** The effects of arbuscular mycorrhizas on soil aggregation depend on the interaction between plant and fungal species. *New Phytologist* **164**:365–373
DOI [10.1111/j.1469-8137.2004.01181.x](https://doi.org/10.1111/j.1469-8137.2004.01181.x).

- Porras-Alfaro A, Herrera J, Natvig DO, Sinsabaugh RL. 2007.** Effect of long-term nitrogen fertilization on mycorrhizal fungi associated with a dominant grass in a semiarid grassland. *Plant and Soil* **296**:65–75 DOI [10.1007/s11104-007-9290-9](https://doi.org/10.1007/s11104-007-9290-9).
- R Development Core Team. 2015.** R: a language and environment for statistical computing. Version 3.2.2. Vienna: the R Foundation for Statistical Computing. Available at <http://www.R-project.org/>.
- Rosindell J, Hubbell SP, Etienne RS. 2011.** The unified neutral theory of biodiversity and biogeography at age ten. *Ecology* **26**:340–348.
- Sanders IR. 2010.** Designer mycorrhizas: using natural genetic variation in AM fungi to increase plant growth. *Journal of Cultural Studies* **3**:1081–1083.
- Sato K, Suyama Y, Saito M, Sugawara K. 2005.** A new primer for discrimination of arbuscular mycorrhizal fungi with polymerase chain reaction-denature gradient gel electrophoresis. *Grassland Science* **51**:179–181 DOI [10.1111/j.1744-697X.2005.00023.x](https://doi.org/10.1111/j.1744-697X.2005.00023.x).
- Schloss PD, Westcott SL, Ryabin T, Hall JR, Hartmann M, Hollister EB, Lesniewski RA, Oakley BB, Parks DH, Robinson CJ, Sahl JW, Stres B, Thallinger GG, Van Horn DJ, Weber CF. 2009.** Introducing mothur: open-source, platform-independent, community-supported software for describing and comparing microbial communities. *Applied and Environmental Microbiology* **75**:7537–7541 DOI [10.1128/AEM.01541-09](https://doi.org/10.1128/AEM.01541-09).
- Schnoor TK, Lekberg Y, Rosendahl S, Olsson PA. 2011.** Mechanical soil disturbance as a determinant of arbuscular mycorrhizal fungal communities in semi-natural grassland. *Mycorrhiza* **21**:211–220 DOI [10.1007/s00572-010-0325-3](https://doi.org/10.1007/s00572-010-0325-3).
- Sieverding E, Toro S, Mosquera O. 1989.** Biomass production and nutrient concentrations in spores of va mycorrhizal fungi. *Soil Biology & Biochemistry* **21**:69–72 DOI [10.1016/0038-0717\(89\)90013-8](https://doi.org/10.1016/0038-0717(89)90013-8).
- Thomson BD, Robson AD, Abbott LK. 2010.** Effects of phosphorus on the formation of mycorrhizas by gigaspora calospora and glomus fasciculatum in relation to root carbohydrates. *New Phytologist* **103**:751–765.
- Torrecillas E, Alguacil MDM, Roldán A, Díaz G, Montesinosnavarro A, Torres MP. 2014.** Modularity reveals the tendency of arbuscular mycorrhizal fungi to interact differently with generalist and specialist plant species in gypsum soils. *Applied & Environmental Microbiology* **80**:5455–5466.
- Verbruggen E, Toby KE. 2010.** Evolutionary ecology of mycorrhizal functional diversity in agricultural systems. *Evolutionary Applications* **3**:547–560 DOI [10.1111/j.1752-4571.2010.00145.x](https://doi.org/10.1111/j.1752-4571.2010.00145.x).
- Verbruggen E, Van DH, Marcel GA, Weedon JT, Kowalchuk GA, Rölting WFM. 2012.** Community assembly, species richness and nestedness of arbuscular mycorrhizal fungi in agricultural soils. *Molecular Ecology* **21**:2341–2353 DOI [10.1111/j.1365-294X.2012.05534.x](https://doi.org/10.1111/j.1365-294X.2012.05534.x).

- Wei SZ. 2016.** *The interactive effects of arbuscular mycorrhizal fungus and potassium application on Lycium barbarum L responding to drought stress.* Xi'an: Northwest A&F University (in Chinese).
- Wilson GW, Rice CW, Rillig MC, Springer A, Hartnett DC. 2009.** Soil aggregation and carbon sequestration are tightly correlated with the abundance of arbuscular mycorrhizal fungi: results from long-term field experiments. *Ecology Letters* **12**:452–461 DOI [10.1111/j.1461-0248.2009.01303.x](https://doi.org/10.1111/j.1461-0248.2009.01303.x).
- Wubet T, Weiß M, Kottke I, Teketay D, Oberwinkler F. 2006.** Phylogenetic analysis of nuclear small subunit rDNA sequences suggests that the endangered African Pencil Cedar, *Juniperus procera*, is associated with distinct members of Glomeraceae. *Mycological Research* **110**:1059–1069 DOI [10.1016/j.mycres.2006.04.005](https://doi.org/10.1016/j.mycres.2006.04.005).
- Xiao E, Krumins V, Song T, Xiao T, Ning Z, Lan X, Sun W. 2016.** Correlating microbial community profiles with geochemical conditions in a watershed heavily contaminated by an antimony tailing pond. *Environmental Pollution* **215**:141–153 DOI [10.1016/j.envpol.2016.04.087](https://doi.org/10.1016/j.envpol.2016.04.087).
- Yuan YW, Vestberg M, Walker C, Hurme T, Zhang X, Lindström K. 2008.** Diversity and infectivity of arbuscular mycorrhizal fungi in agricultural soils of the Sichuan Province of mainland China. *Mycorrhiza* **18**:59–68 DOI [10.1007/s00572-008-0161-x](https://doi.org/10.1007/s00572-008-0161-x).
- Zaller JG, Frank T, Drapela T. 2011.** Soil sand content can alter effects of different taxa of mycorrhizal fungi on plant biomass production of grassland species. *European Journal of Soil Biology* **47**:175–181 DOI [10.1016/j.ejsobi.2011.03.001](https://doi.org/10.1016/j.ejsobi.2011.03.001).
- Zhao Y. 2007.** Analysis and evaluation on degraded ecosystem ecological characterizes of vegetation restoration process in the hill areas of the Taihang Mountains. Doctoral dissertation, Henan Agricultural University (in Chinese).