

New Jersey Department of Transportation Organization Chart



State of New Jersey

Mission Statement: "Improving Lives by Improving Transportation."

View our latest organization chart online at:
www.njdot.nj.gov/about/



Commissioner
Francis K. O'Connor

**Chair of the Board
NJ Transit**
Francis K. O'Connor

The Commissioner serves in an ex-officio capacity for the following agencies:

- New Jersey Transit Corporation (Chair)
- New Jersey Transportation Trust Fund Authority (Chair)
- Delaware Valley Regional Planning Commission
- New Jersey Motor Vehicle Commission
- New Jersey Redevelopment Authority
- New Jersey Turnpike Authority
- North Jersey Transportation Planning Authority
- South Jersey Transportation Planning Authority
- South Jersey Transportation Planning Organization
- State Planning Commission

The Commissioner is also
Chair of the Board, New Jersey Transit Corporation
Chair of the Board, New Jersey Transportation Trust Fund Authority
Chair of the Board, New Jersey Turnpike Authority
Chair of the Board, South Jersey Transportation Authority

Deputy Commissioner
Joseph D. Bertoni

Inspector General
TBD

Legal Services
Philip Espinosa

**Assistant Commissioner
Operations**
(Emergency Management Coordinator)
Christopher Feintheil

**Deputy Director
Program Advancement**
V. Holman

**Assistant Commissioner
Administration**
Kelly A. Hutchinson

Chief of Staff
Christopher Scales

Chief Financial Officer
Finance
Charles Maciejunes

**Director
Civil Rights &
Affirmative Action**
Vicki Tilghman-Ansley

External Programs
TBD

Internal Programs
R. Outram

**Senior Director
Transportation
Mobility**
Sal Cowan

**Senior Director
Regions**
Anthony Ennas

**Division Director
Support Services**
J. Debby Hatzisavvas

**Deputy Director
Support Services**
A. Zeleznock

**Facilities
Planning &
Engineering &
Construction**
D. Meszaros

Employee Safety
R. Zydorski

Bldg. Mgmt. Services
S. Mooney

**Deputy Director
Human Resources**
J. Nelson

Employee Relations
R. Thomas

**Employee Benefits
and Services**
D. Morales

**Deputy Director
Human Resources**
K. Janiszewski

**Recruitment and
Appointments**
R. Savelli

**Director
Budget**
Steven Morley

Budget Analysis
R. Calderon

**Enterprise
Management Office**
TBD

**Director
Accounting and
External Audit**
Barbara DeLucia

Deputy Director
C. Breza

**Accounting
Operations**
T. Goodson

**Agreement
Accounting**
D. Naik

External Audit
R. Temmer

**Director
Procurement**
Anthony Genovese

Deputy Director
K. Abbott

**Professional and
Construction
Services**
M. Serenelli

**Equipment, Materials
& Supplies**
M. Groninger

**Director
Information
Technology**
Gary Zayas

**IT Security and
Services**
S. Prichard

**Applications
Development &
Systems Support**
J. Licari

**Information
Management &
Technology Png.**
T. Stewart

**Office of Emergency
Management, Security
& Response**
R. Burd

**Director
Mobility
Engineering**
John Longworth

**Mobility Operations
North**
M. Juliano

**Mobility Operations
South**
TBD

Permits
A. Gupta

**Equipment
Engineering &
Operations**
M. Boyer

**Division Director
Operations
North**
Danielle Roman

**Asst. Division Director
North**
O. Diaz

**Division Director
Operations
Central**
Christopher Tomlin

**Asst. Division Director
Central**
A. Marino

**Division Director
Operations
South**
John Bystrycki

**Asst. Division Director
South**
J. Evanylo

**Director
Operations Support
and Engineering**
Jackie Yiu

**Asst. Division Director
Operations Support
and Engineering**
F. Schneider

**Assistant Commissioner
Capital Program Management**
Parth Oza
Deputy State Transportation Engineer

**Director
Maritime**
G. Clifton

**Senior Director
Construction and
Materials**
Albert Balluch

**Assistant Commissioner
Local Resources & Community
Development**
Laine Rankin

**Assistant Commissioner
Statewide Planning, Safety and Capital
Investment**
Eric Powers

**Senior Director
Highway & Traffic
Design**
(Deputy State Transp. Engr.)
Robert Marshall

**Director
Traffic Engineering**
J. Oplinger

**Director
Design Services**
A. Didok

**Pavement & Drainage
Management and
Technology**
R. Blight

**Director
Right of Way &
Access Management**
Victor Akpu

**Deputy Director
Right of Way &
Access Management**
R. Scanlon

Northern District
TBD

South District
M. Palmer

**Right of Way &
Access Management**
E. Handleman

Technical Support
D. Kook

Closing
D. Hutchinson

**Director
Capital Program
Support**
Tina Shutz

Design Standards
A. Roda

**Landscape
Architecture & Env.
Solutions**
TBD

**Director
Project Management**
Atul Shah

**Deputy Director
Team B**
P. Patel

**Program
Management Office**
S. Ackerman

**Executive Regional
Manager
Team A**
G. Patel

**Executive Regional
Manager
Team C**
H. Dave

**Executive Regional
Manager
Team D**
C. Manz

**Director
Bridge Engineering &
Infrastructure Mgt.**
(State Transp. Engr.)
Eric Yermack

**Structural Design &
Geotechnical
Engineering**
K. Sharp

**Structural Evaluation
& Bridge Management**
M. Khan

**Structural & Railroad
Engr. Services**
A. Najem

**Director
Construction and
Materials**
Alexander Borovskis

Materials
E. Inman

**Construction
Management**
Y. Bhavsar

**Reg. Constr.
Engineering North**
N. Appesh

**Reg. Constr.
Engineering Central**
C. Kneidinger

**Reg. Constr.
Engineering South**
D. Divalerio

**Director
Construction &
Materials/Alternative
Project Delivery**
T. Kondash

Design Build
TBD

**Director
Environmental
Resources**
Pamela Garrett

**Environmental
Policy Group**
W. McBride

**Operations Project
Support Unit**

**Stromwater
Compliance & Site
Remediation
Group**

**Project
Development
Support Unit**

**Director
Statewide Planning
(Director, NJ Research
Center)**
Megan Fackler

**Statewide
Strategies**
S. Joshi

Deputy Director
A. Gendek

Research
TBD

**Director
Capital Investment and
Program Coordination**
Sue Tomlinson

**Deputy Director
Capital Investment and
Program Coordination**
A. Polachak

**Capital Program
Coordination**
J. Figon

**Capital Program
Development**
TBD

**Director
Safety**
Frank Neary

**Deputy Director
Safety, Bicycle and
Pedestrian Programs**
D. LiSanti

**Transportation Data and
Support**
S. Choborda

**Safety, Bicycle and
Pedestrian Programs**
TBD

**Outdoor
Advertising and
Junkyards**

**Aeronautics &
Modal Grants**
K. Davis

**Senior Director
Local Aid & Economic
Development**
David Bruccoleri

**Director
Community
Development**
Veronica Murphy

**Project
Management**
C. Jegan

**Major Access
Permits**
TBD

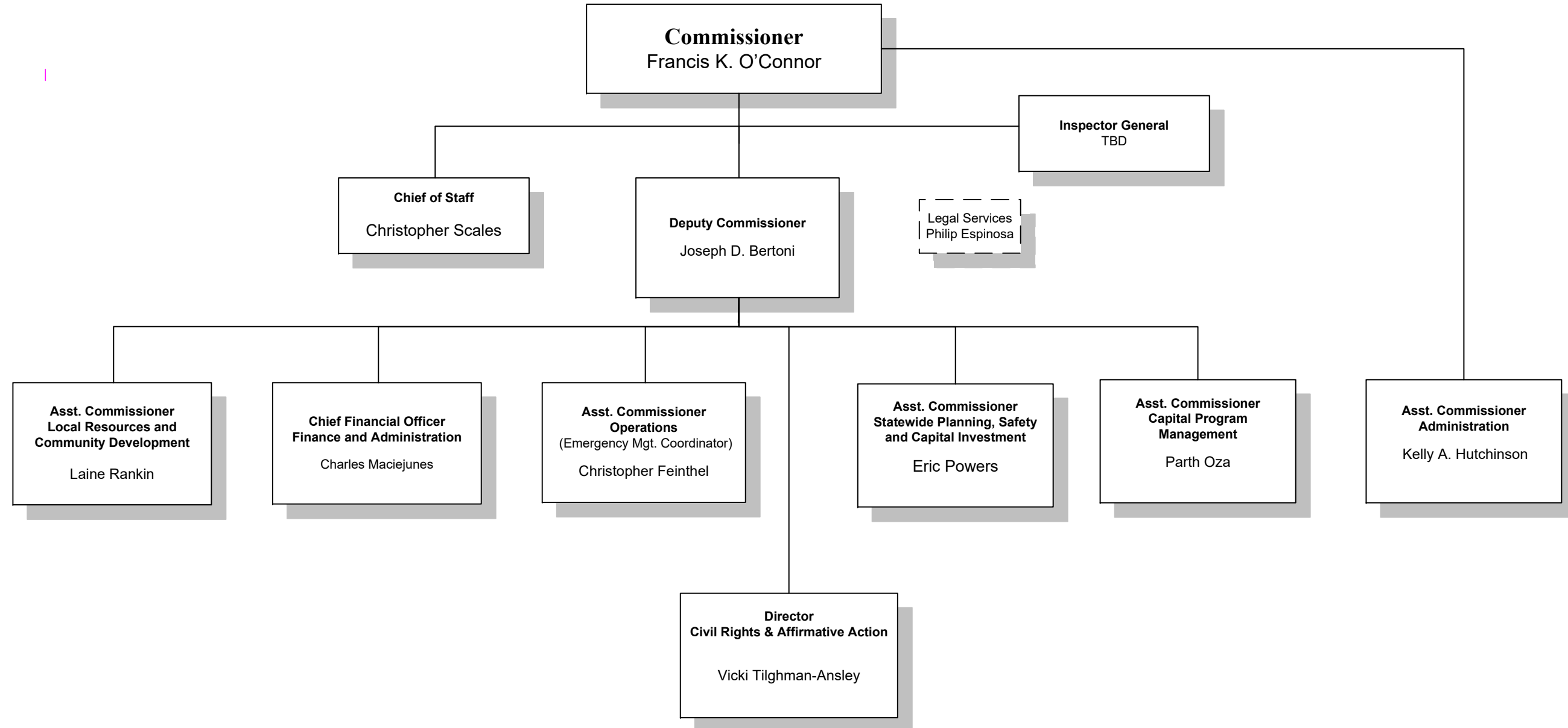
Local Aid District 1
A. Iervolino

**Local Aid District 2
Newark**
E. Johnson

Local Aid District 3
K. Pandit

**Local Aid District 4
Cherry Hill**
T. Berryman

**New Jersey Department of Transportation
Organization Chart
Deputy Commissioner**

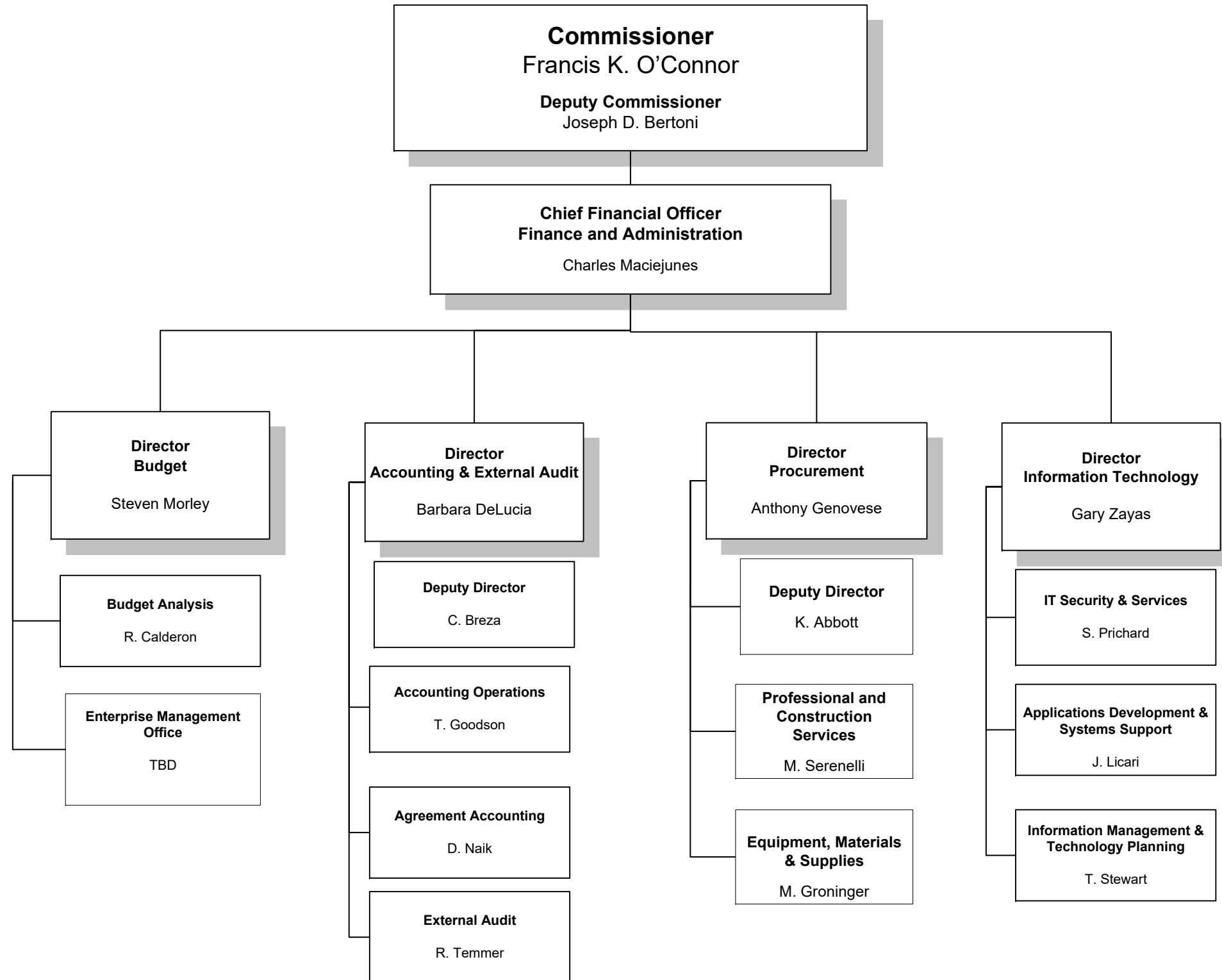




New Jersey Department of Transportation Organization Chart

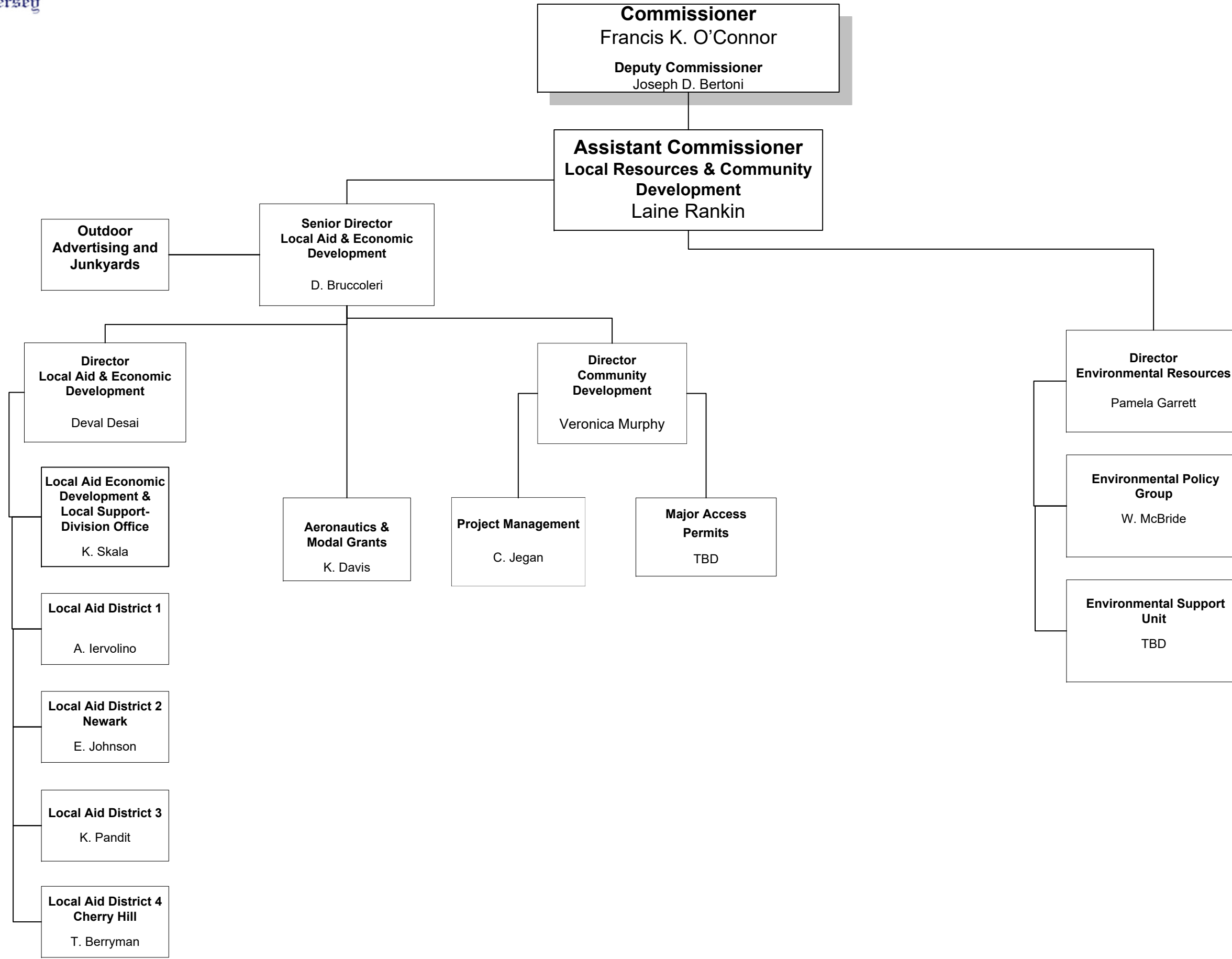


Finance and Administration





Local Resources & Community Development

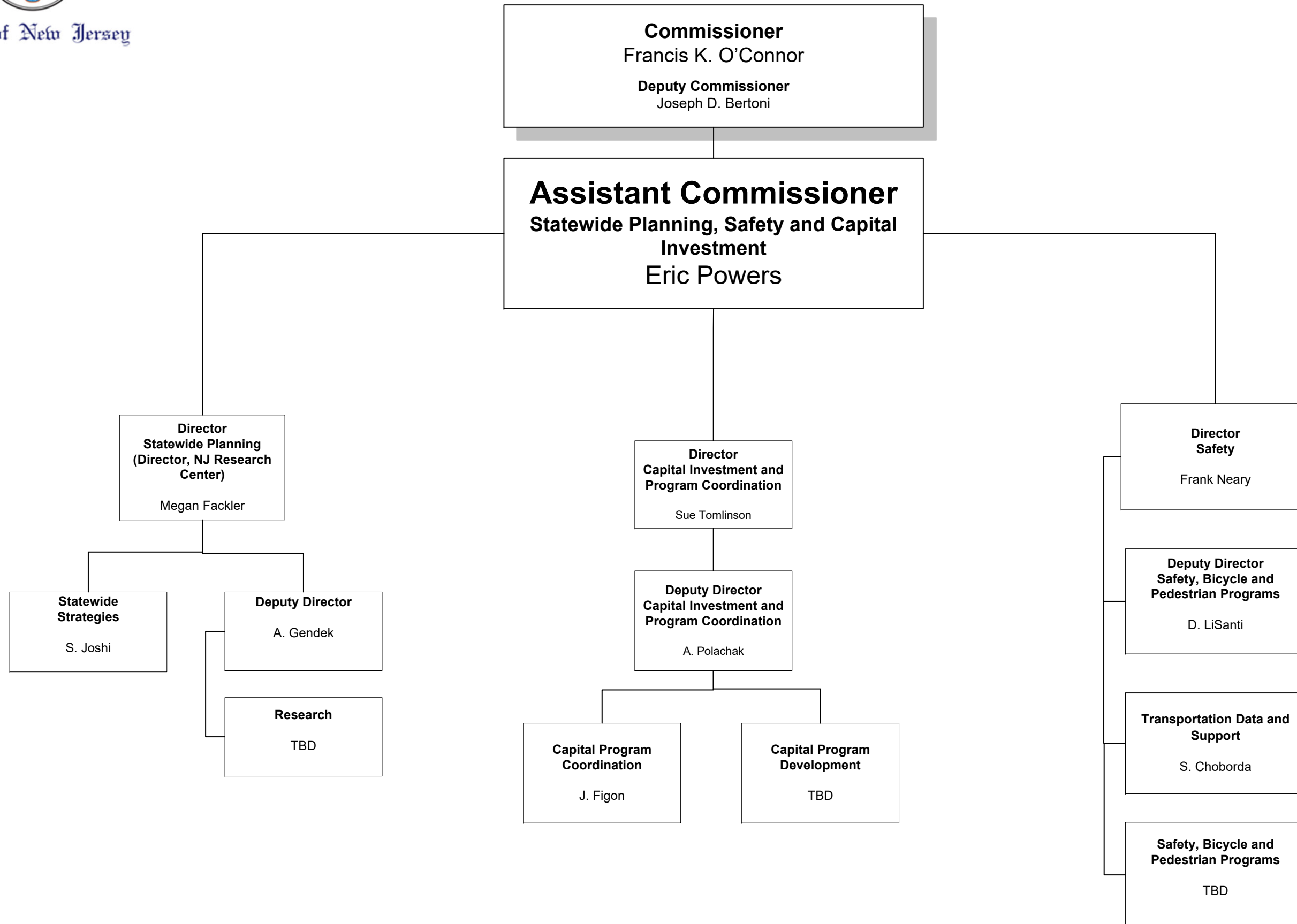


New Jersey Department of Transportation
Organization Chart



State of New Jersey

Statewide Planning, Safety and Capital Investment

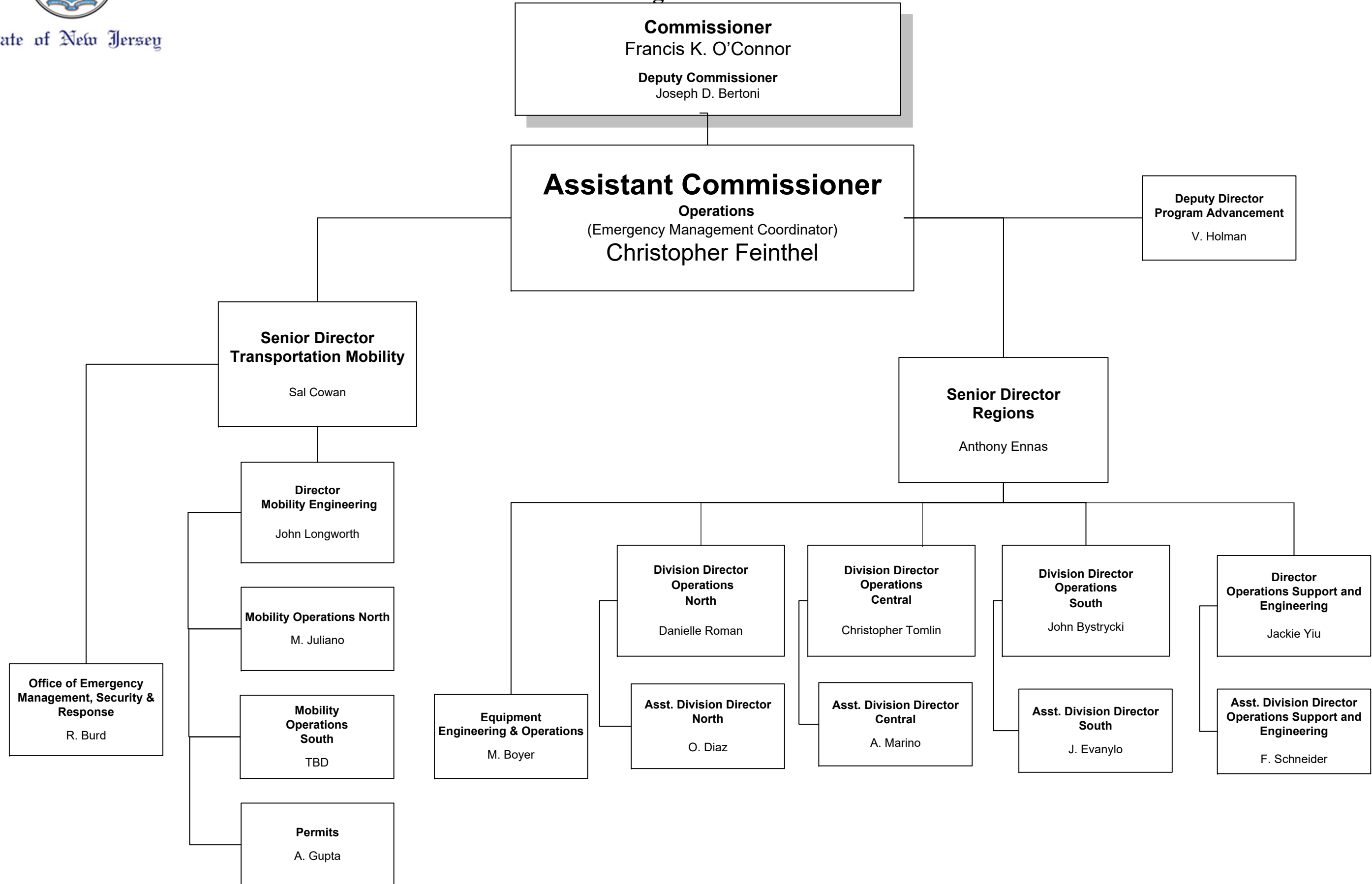




State of New Jersey

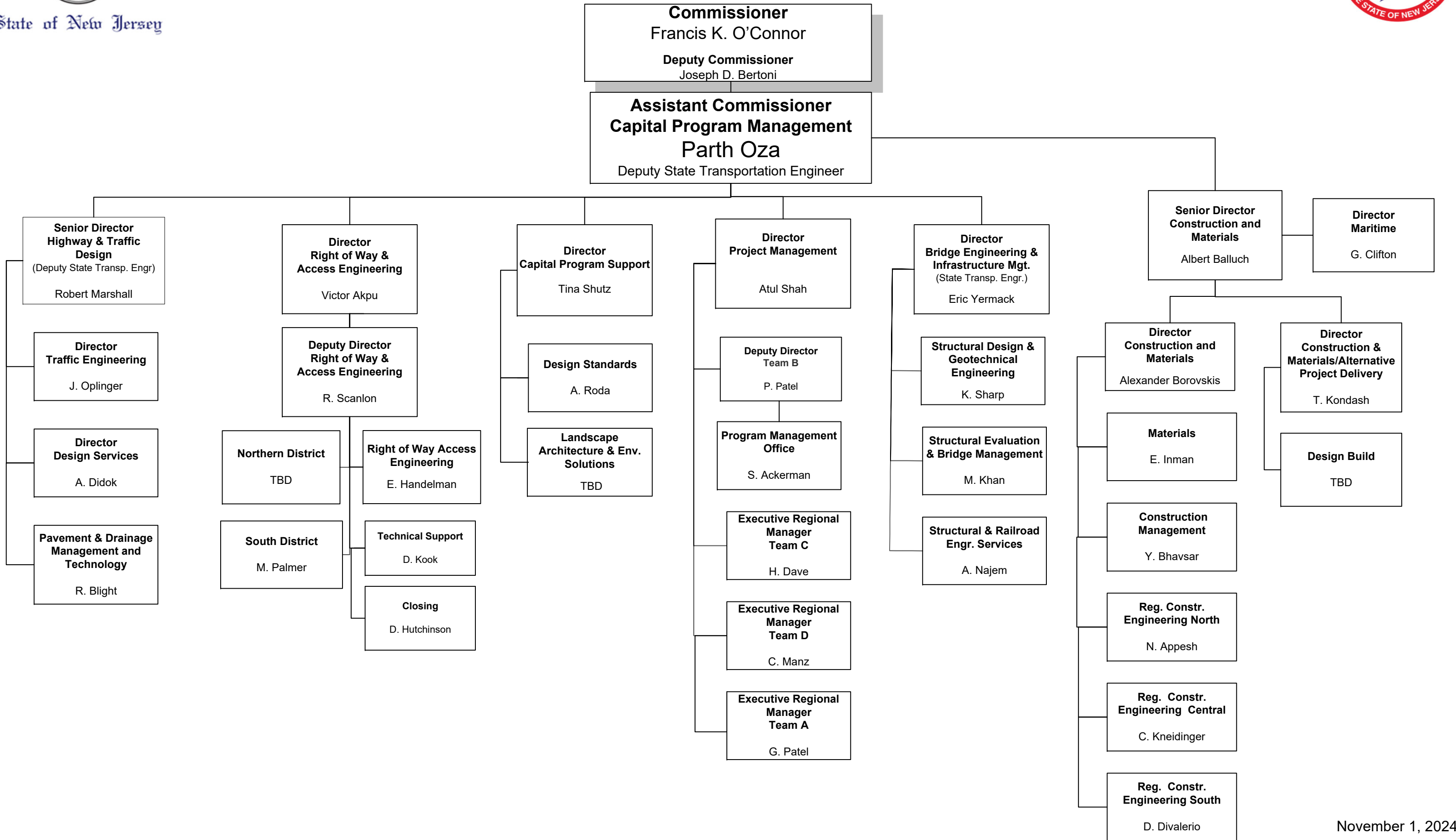


New Jersey Department of Transportation Organization Chart





New Jersey Department of Transportation Organization Chart Capital Program Management



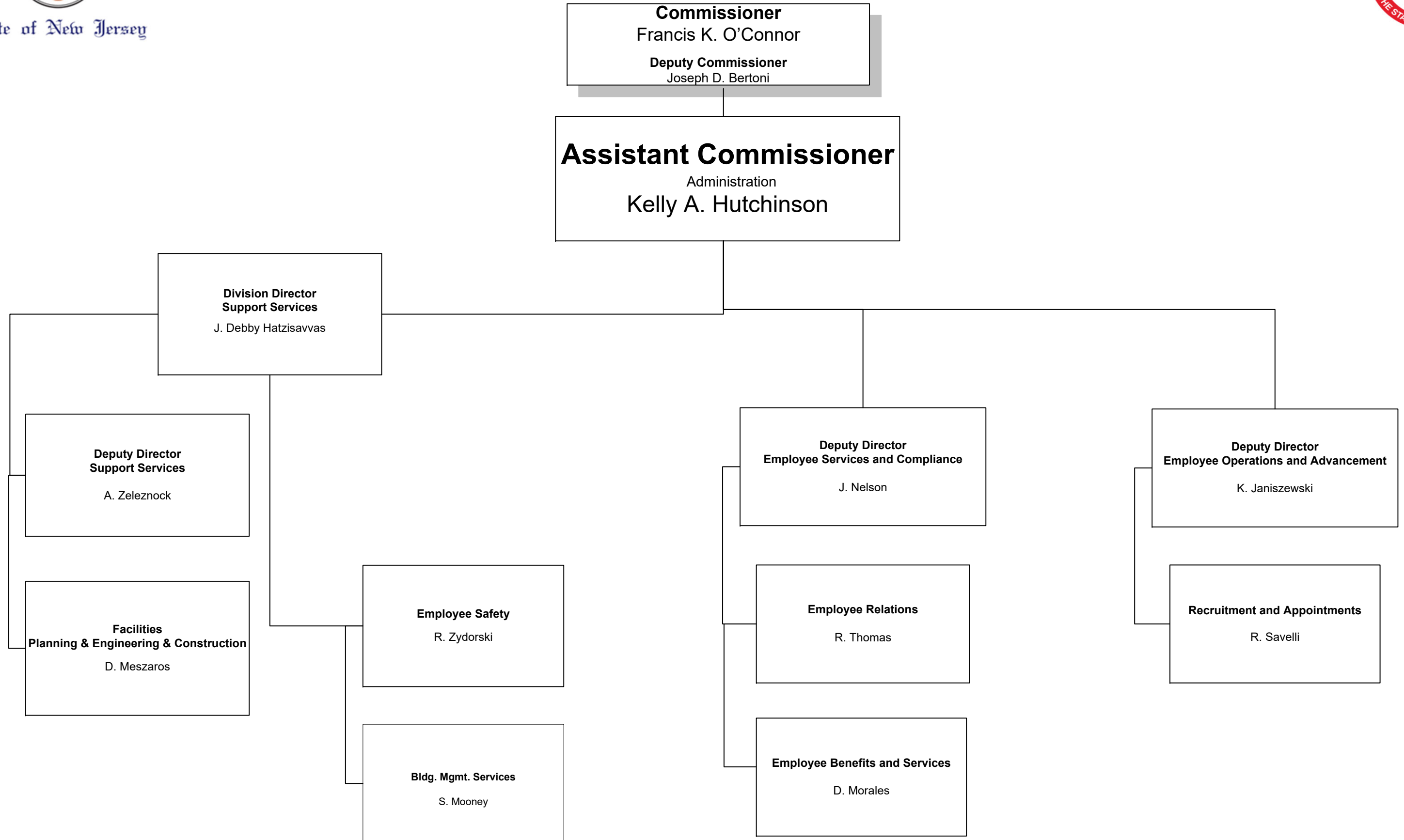


State of New Jersey

New Jersey Department of Transportation

Organization Chart

Administration





State of New Jersey

New Jersey Department of Transportation Organization Chart

Chief of Staff

