

STUDENT PERFORMANCE REPORT

STUDENT NAME
THAKUR ANJALI AJAY

STUDENTS EVALUATED
143

STUDENT MARKS
85

TEST NAME
IGP GS TEST 1

LAST UPDATE
Apr 16, 2024

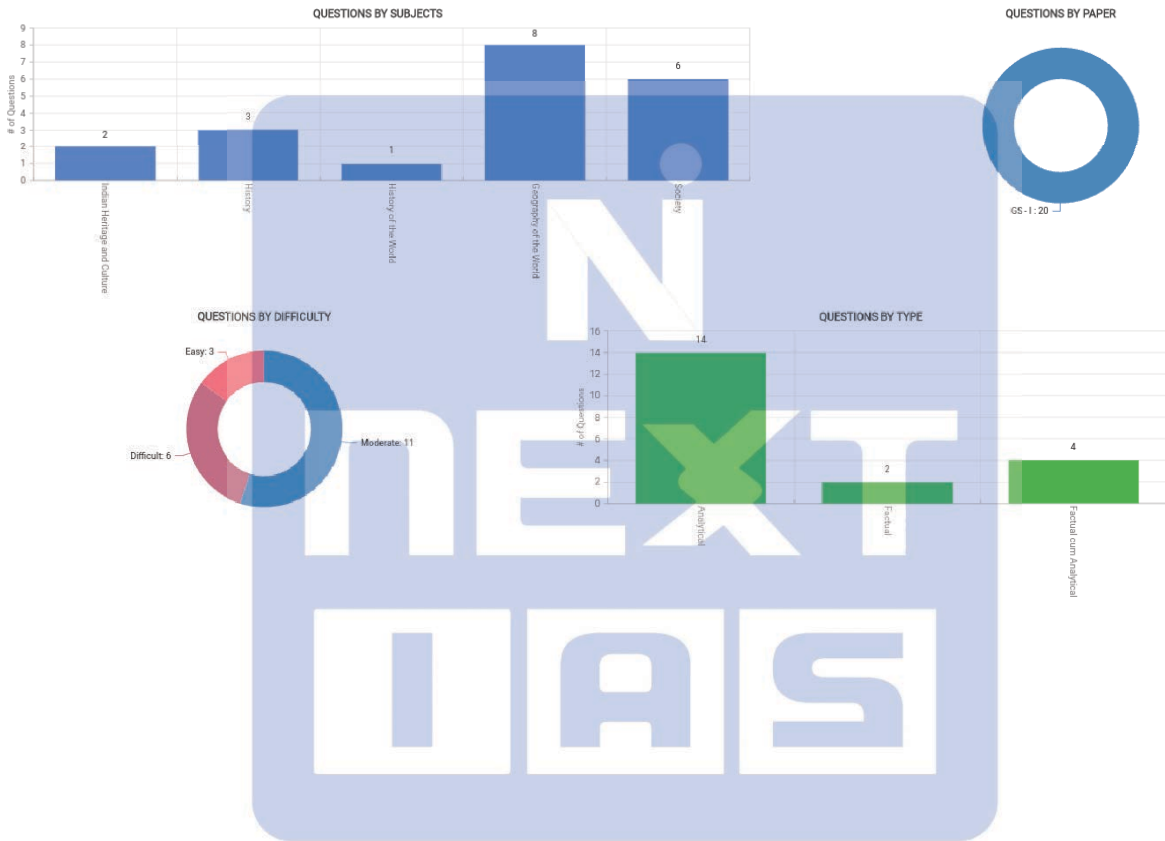
STUDENT RANK
81

TEST DATE
Aug 4, 2023

ALL THE DATA IN CHARTS AND TABLES BELOW IS DYNAMIC IN NATURE AND WILL KEEP GETTING UPDATED AS MORE STUDENTS SUBMIT THEIR PAPER

TEST PROFILE

PAPER: All | SUBJECTS: All | DIFFICULTY LEVEL: All | TYPE OF QUESTION: All



Questions in the Test

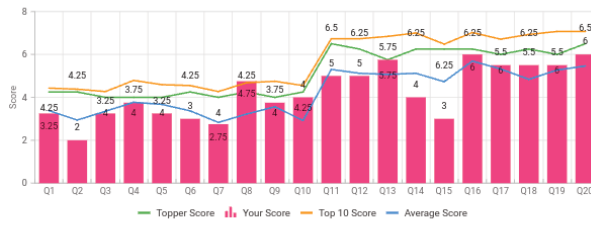
ID	QUESTION	PAPER	SUBJECT	TYPE	DIFFICULTY	MARKS
Q1	The fabric of Indian philosophical thought owes as much to Northern India as to Southern India. Elucidate.	GS-1	Indian Heritage and Culture	Analytical	Moderate	10
Q2	The Indian society's impulse for social change and reform was a response to its opposition to colonial rule. Examine.	GS-1	History	Analytical	Difficult	10
Q3	What are the factors that led to the Russian revolution and what are the consequences of this revolu...	GS-1	History of the World	Factual	Easy	10
Q4	Discuss the various factors responsible for the uneven temperature distribution on Earth's surface.	GS-1	Geography of the World	Factual	Moderate	10
Q5	The melting of glaciers due to climate change has serious implications for the ecosystem and human s...	GS-1	Geography of the World	Factual cum Analytical	Easy	10
Q6	The White Revolution was most successful in the Western part of India. Discuss the factors for this regional success of the White Revolution.	GS-1	Geography of the World	Analytical	Moderate	10
Q7	To what extent does seismic investigation contribute to our understanding of the Earth's interior structure? Analyze its significance in detail.	GS-1	Geography of the World	Factual cum Analytical	Moderate	10
Q8	The pace of demographic transition varies across different states of India making population growth a double-edged sword. Comment.	GS-1	Society	Analytical	Moderate	10
Q9	The ethnic and cultural diversity in India has always been bound by the thread of unity. Discuss the...	GS-1	Society	Analytical	Easy	10
Q10	The dichotomy in public and private life in Indian society acts as a major barrier to the annihilation of caste. Justify.	GS-1	Society	Analytical	Difficult	10

1-10 of 20 < >



How have I performed vis-à-vis the class?

TOTAL QUESTIONS	TOTAL MARKS	YOUR SCORE	AVERAGE SCORE	TOP 10 SCORE	TOPPER SCORE
20	250.0	85.0	84.9	113.8	103.3



ID	PAPER	QUESTION	SUBJECT	DIFFICULTY	TYPE	MARKS
Q1	GS - I	The fabric of Indian philosophical thought owes as much to Northern India as to Southern India. Elucidate.	Indian Heritage and Culture	Moderate	Analytical	10 3
Q2	GS - I	The Indian society's impulse for social change and reform was a response to its opposition to colonial rule. Examine.	History	Difficult	Analytical	10 2
Q3	GS - I	What are the factors that led to the Russian revolution and what are the consequences of this revolu...	History of the World	Easy	Factual	10 3
Q4	GS - I	Discuss the various factors responsible for the uneven temperature distribution on Earth's surface.	Geography of the World	Moderate	Factual	10 3
Q5	GS - I	The melting of glaciers due to climate change has serious implications for the ecosystem and human s...	Geography of the World	Easy	Factual cum Analytical	10 3
Q6	GS - I	The White Revolution was most successful in the Western part of India. Discuss the factors for this regional success of the White Revolution.	Geography of the World	Moderate	Analytical	10 3
Q7	GS - I	To what extent does seismic investigation contribute to our understanding of the Earth's interior structure? Analyze its significance in detail.	Geography of the World	Moderate	Factual cum Analytical	10 2
Q8	GS - I	The pace of demographic transition varies across different states of India making population growth a double-edged sword. Comment.	Society	Moderate	Analytical	10 4
Q9	GS - I	The ethnic and cultural diversity in India has always been bound by the thread of unity. Discuss the...	Society	Easy	Analytical	10 3
Q10	GS - I	The dichotomy in public and private life in Indian society acts as a major barrier to the annihilation of caste. Justify.	Society	Difficult	Analytical	10 4

How have I performed in each paper?



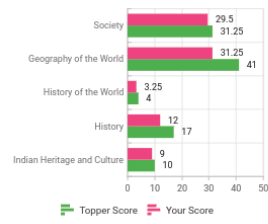
PAPER NAME	TOTAL QUESTIONS	TOTAL MARKS	YOUR SCORE	AVERAGE SCORE	TOP 10 SCORE	TOPPER SCORE
GS - I	20	250.0	85.0	84.9	113.8	103.3

How have I performed in each Subject?

Marks by Subject

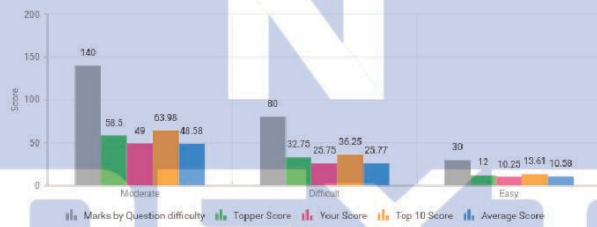


- Indian Heritage and Culture
- History
- History of the World
- Geography of the World
- Society



SUBJECT NAME	TOTAL QUESTIONS	TOTAL MARKS	YOUR SCORE	AVERAGE SCORE	TOP 10 SCORE	TOPPER SCORE
Indian Heritage and Culture	2	25.0	9.0	8.4	11.3	10.0
History	3	40.0	12.0	13.4	17.8	17.0
History of the World	1	10.0	3.3	3.4	4.3	4.0
Geography of the World	8	100.0	31.3	34.5	45.4	41.0
Society	6	75.0	29.5	25.3	35.0	31.3
Total	20	250.0	85.0	84.9	113.8	103.3

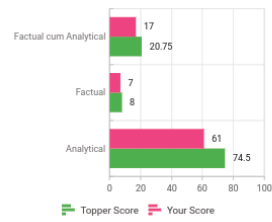
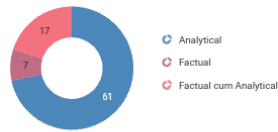
My performance based on question difficulty



DIFFICULTY LEVEL	TOTAL QUESTIONS	TOTAL MARKS	YOUR SCORE	AVERAGE SCORE	TOP 10 SCORE	TOPPER SCORE
Moderate	11	140.0	49.0	48.6	64.0	58.5
Difficult	6	80.0	25.8	25.8	36.3	32.8
Easy	3	30.0	10.9	10.6	13.6	12.0
Total	20	250.0	85.0	84.9	113.8	103.3

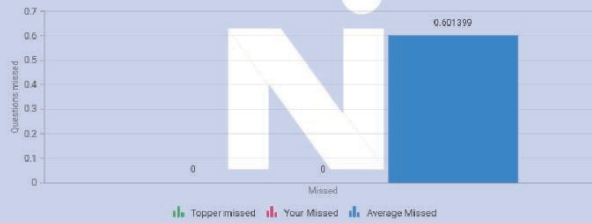
What type of questions have I done well?

Marks by question type



QUESTION TYPE	TOTAL QUESTIONS	TOTAL MARKS	YOUR SCORE	AVERAGE SCORE	TOP 10 SCORE	TOPPER SCORE
Analytical	14	180.0	61.0	60.3	82.2	74.5
Factual	2	20.0	7.0	7.1	9.1	8.0
Factual cum Analytical	4	50.0	17.0	17.5	22.6	20.8
Total	20	250.0	85.0	84.9	113.8	103.3

What do my question attempts look like?



ID	QUESTION	PAPER	SUBJECT	DIFFICULTY	TYPE	ATTEMPTED
Q1	The fabric of Indian philosophical thought owes as much to Northern India as to Southern India. Elucidate.	GS-1	Indian Heritage and Culture	Moderate	Analytical	No
Q2	The Indian society's impulse for social change and reform was a response to its opposition to colonial rule. Examine.	GS-1	History	Difficult	Analytical	No
Q3	What are the factors that led to the Russian revolution and what are the consequences of this revolu...	GS-1	History of the World	Easy	Factual	No
Q4	Discuss the various factors responsible for the uneven temperature distribution on Earth's surface.	GS-1	Geography of the World	Moderate	Factual	No
Q5	The melting of glaciers due to climate change has serious implications for the ecosystem and human s...	GS-1	Geography of the World	Easy	Factual cum Analytical	No
Q6	The White Revolution was most successful in the Western part of India. Discuss the factors for this regional success of the White Revolution.	GS-1	Geography of the World	Moderate	Analytical	No
Q7	To what extent does seismic investigation contribute to our understanding of the Earth's interior structure? Analyze its significance in detail.	GS-1	Geography of the World	Moderate	Factual cum Analytical	No
Q8	The pace of demographic transition varies across different states of India making population growth a double-edged sword. Comment.	GS-1	Society	Moderate	Analytical	No
Q9	The ethnic and cultural diversity in India has always been bound by the thread of unity. Discuss the...	GS-1	Society	Easy	Analytical	No
Q10	The dichotomy in public and private life in Indian society acts as a major barrier to the annihilation of caste. Justify.	GS-1	Society	Difficult	Analytical	No