

AperTO - Archivio Istituzionale Open Access dell'Università di Torino

Reshaping gut bacterial communities after dietary *Tenebrio molitor* larvae meal supplementation in three fish species

This is a pre print version of the following article:

Original Citation:

Availability:

This version is available <http://hdl.handle.net/2318/1683497> since 2019-12-22T19:31:08Z

Terms of use:

Open Access

Anyone can freely access the full text of works made available as "Open Access". Works made available under a Creative Commons license can be used according to the terms and conditions of said license. Use of all other works requires consent of the right holder (author or publisher) if not exempted from copyright protection by the applicable law.

(Article begins on next page)

Manuscript Details

Manuscript number	AQUA_2018_709
Title	Reshaping gut bacterial communities after dietary <i>Tenebrio molitor</i> larvae meal supplementation in three different fish species
Article type	Research Paper

Abstract

The aquaculture industry is currently looking for alternative, sustainable diets that provide similar or better growth for the reared species. We investigated whether replacing fishmeal with insect meal (*Tenebrio molitor*) in the supplied diets of *Sparus aurata*, *Dicentrarchus labrax* and *Oncorhynchus mykiss* causes similar shifts in the bacterial gut communities of these farmed fish species. The diversity of the gut bacterial 16S rRNA gene revealed the presence of most major phyla known to exist in the gut of these three fish species. However, there was a differential shift in the gut bacterial community structure of each species before and after the dietary meal replacement. *S. aurata* and *D. labrax* had more pronounced changes compared to *O. mykiss*, based on analysis of the most dominant and/or the shared vs. unique phylotypes before and after the replacement, suggesting that insect meal replacement resulted in new nutritional niches in the gut of these two fish compared to *O. mykiss*. Our results indicate that the most desirable fish diet substitution differentially affects the gut microbiota in different hosts, implying that a species-specific tailor-made approach in diet manipulations should be considered in the future.

Keywords	Bacteria; diet; fish; gut; insect meal; replacement; aquaculture
Taxonomy	Animal Science, Agricultural Products, Microbiology, Microbiome
Manuscript category	Vertebrate Nutrition
Corresponding Author	Konstantinos Kormas
Corresponding Author's Institution	University of Thessaly
Order of Authors	Efthimia Antonopoulou, Eleni Nikouli, Giovanni Piccolo, Laura Gasco, Francesco Gai, Stavros Chatzifotis, Elena Mente, Konstantinos Kormas
Suggested reviewers	Aram Mikaelyan, Mei C. Ooi, An-Li Wang, Adrian Ochoa-Leyva

Submission Files Included in this PDF

File Name [File Type]

antonopoulou_insect_meal_highlights.docx [Highlights]

antonopoulou_insectmeal_aquaculture.docx [Manuscript File]

antonopoulou_insect_meal_supplementary.docx [Data in Brief]

To view all the submission files, including those not included in the PDF, click on the manuscript title on your EVISE Homepage, then click 'Download zip file'.

- Insect meal could be an alternative for fishmeal replacement in aquaculture.
- There is little information on the effect of such replacement to the fish gastrointestinal microbiota (GITM).
- We concomitantly investigated the impact of fishmeal replacement by insect meal in two marine and one freshwater farmed fish species.
- Our results showed that a similar amount of diet replacement results in more pronounced GITM changes in the marine fish than in the freshwater depicting, thus, the need for considering gut ecophysiology in diet replacement practices.

**Reshaping gut bacterial communities after dietary *Tenebrio molitor* larvae meal
supplementation in three different fish species**

Efthimia Antonopoulou¹, Eleni Nikouli², Giovanni Piccolo³, Laura Gasco^{4,5}, Francesco Gai⁵,
Stavros Chatzifotis⁶, Eleni Mente², Konstantinos Ar. Kormas^{2*}

¹ Laboratory of Animal Physiology, Department of Zoology, School of Biology, Aristotle
University of Thessaloniki, 541 24 Thessaloniki, Greece

² Department of Ichthyology and Aquatic Environment, School of Agricultural Sciences,
University of Thessaly, 384 46 Volos, Greece

³ Department of Veterinary Medicine and Animal Production, University of Naples Federico II,
Via F. Delpino 1, 80137 Naples, Italy

⁴ Department of Agricultural, Forest and Food Sciences, University of Turin, Largo P. Braccini 2,
10095 Grugliasco, TO, Italy

⁵ Institute of Science of Food Production, National Research Council, Largo P. Braccini 2, 10095
Grugliasco (TO), Italy

⁶ Institute of Marine Biology, Biotechnology and Aquaculture, Hellenic Centre for Marine
Research, Gournes Pediados P.O. Box 2214, 71003 Heraklion, Crete, Greece

* Corresponding author; Tel.: +30-242-109-3082, Fax: +30-242109-3157, E-mail:
kkormas@uth.gr, kkormas@gmail.com

Keywords: Bacteria; diet; fish; gut; insect meal; replacement; aquaculture

Running title: Effect of insect meal on fish gut bacteria

32 **ABSTRACT**

34 The aquaculture industry is currently looking for alternative, sustainable diets that provide similar
or better growth for the reared species. We investigated whether replacing fishmeal with insect
36 meal (*Tenebrio molitor*) in the supplied diets of *Sparus aurata*, *Dicentrarchus labrax* and
Oncorhynchus mykiss causes similar shifts in the bacterial gut communities of these farmed fish
38 species. The diversity of the gut bacterial 16S rRNA gene revealed the presence of most major
phyla known to exist in the gut of these three fish species. However, there was a differential shift
40 in the gut bacterial community structure of each species before and after the dietary meal
replacement. *S. aurata* and *D. labrax* had more pronounced changes compared to *O. mykiss*,
42 based on analysis of the most dominant and/or the shared vs. unique phylotypes before and after
the replacement, suggesting that insect meal replacement resulted in new nutritional niches in the
44 gut of these two fish compared to *O. mykiss*. Our results indicate that the most desirable fish diet
substitution differentially affects the gut microbiota in different hosts, implying that a species-
46 specific tailor-made approach in diet manipulations should be considered in the future.

48 INTRODUCTION

50 The aquafeed production industry relies mainly on raw ingredients, such as fish meal
supplied from wild fish, as protein sources. However, the replacement of fish meal in fish diets is
52 a major objective towards achieving sustainability in both sectors, fisheries and aquaculture.
Recently, much attention has been paid to insect meals due to their interesting nutritional value
54 and sustainability (Henry et al., 2015; van Huis, 2013), and recent researches have highlighted
their potential in fish feeds as substitute for conventional protein sources (Belforti et al., 2015;
56 Gasco et al., 2016, Lock et al., 2016; Piccolo et al., 2017; Iaconisi et al., 2017; Renna et al.,
2017). Such substitutes need to at least retain the growth and health features of the host
58 unchanged, if not improving them.

Fishmeal replacement can affect the growth and health of the reared fish (e.g. Estruch et
60 al. 2015, Parma et al. 2017, Schmidt et al 2016). However, whether these effects are induced by
changes in the probiotics and the gastrointestinal microbiota (GITM) remains elusive and
62 understudied compared to humans (Li et al. 2016, Mu e al. 2016). Such replacements can result
in the intake of feed with dubious digestibility and absorption by the host (e.g. Santigosa et al.
64 2011, Baeza-Ariño et al. 2016) with largely unknown effects on its GITM in relation to the
attachment, development and function of microbial symbionts. While the major beneficial roles
66 of GITM on their hosts have been recognized (Mu et al. 2016, Sanchez et al. 2017), the origin,
distribution, cosmopolitanism and host-specificity of these microorganisms remain largely
68 unknown for most of the animals. Nonetheless, knowing these parameters is crucial to unraveling
the exact mechanisms underlying their symbiotic relationships with the host. Although fish
70 harbour less diverse gastrointestinal tract (GIT) bacterial communities than endothermic animals
and humans (Ringø et al. 1995), these communities can form complex biological relationships
72 (Sullam et al. 2012, Givens et al. 2013, Llewelyn et al. 2014, Ghanbari et al. 2015, Wang et al.
2017) that critically influence the host's nutrition, growth and health (Ringø et al. 2016).

74 Due to the complexity of the induced changes in the microbial community structure and
the interactions of the potential metabolic benefits, many studies of these diet replacements tend
76 to assess only major growth and/or health-related factors. One of the most understudied factors, is
the effect of the new diets on the fish GITM (Ringø et al. 2016, Wang et al. 2017). There are even
78 fewer studies that investigate the ecological features of the GITM in hosts undergoing feed

substitution such as co-occurrence and distribution patterns. Some of these features, such as
80 abundance distributions, are pivotal for explaining niche partitioning, environmental selection,
fitness, etc., (Magurran2004, Kirchamn2012) and could reflect the suitability and importance of a
82 specific GITM for a particular host. Specifically, for the gut environment, the microbiota remains
largely a deterministic characteristic driven by the nutritional background of the gut and the
84 interplay between the members of the GITM (Pereira & Berry 2017).

In this paper, we hypothesized that the replacement of fishmeal with alternative proteins
86 of insect origin is not equally beneficial to all fish species as far as the community structure of
their GITM is concerned. To test this hypothesis, the major shifts in the GITM of three
88 commercially important farmed fish species were evaluated after substituting the fish meal to
achieve $\geq 50\%$ *Tenebrio molitor* larvae meal (TM) inclusion in the feed. The changes in the GIT
90 bacterial community structure were investigated by analyzing the 16S rRNA gene diversity by
next generation sequencing analysis in the midgut of sea bream (*Sparus aurata*), sea bass
92 (*Dicentrarchus labrax*) and rainbow trout (*Oncorhynchus mykiss*) individuals before and after the
fish meal substitution in feeds.

94

MATERIALS AND METHODS

96

Experimental growth of fish and sampling. All experimental protocols applied in this
98 work were designed according to the guidelines of the current European Directive (2010/63/EU)
on the protection of animals used for scientific purposes. For all trials, the same full-fat TM
100 larvae meal was used and purchased from the Gaobeidian Shannong Biology CO. LTD
(Shannong, China). TM larvae meal was imported by the Department of Agricultural, Forest, and
102 Food Sciences (DISAFA) of the University of Torino (Italy) (DGSFA 0019960-P (02/11/2012))
and used for the preparation of three distinct experimental diets based on the nutritional needs of
104 each experimental fish species used in the present study. Thus, three independent dietary
experiments were performed. The rainbow trout (*Oncorhynchus mykiss*) trial was carried out in
106 the experimental facility of DISAFA (Torino, Italy) (DM n. 182/2010). The European sea bass
(*Dicentrarchus labrax*) trial was conducted at the Institute of Marine Biology, Biotechnology and
108 Aquaculture (IMBBC) of the Hellenic Center for Marine Research (Crete, Greece) (EL91-
BIOexp-04). The gilthead sea bream (*Sparus aurata*) trial took place at the Department of

110 Veterinary Medicine and Animal Production (University of Naples Federico II, Italy). The
European sea bass and gilthead sea bream trials protocols were also evaluated and approved by
112 the Aquaexcel Ethic committee (Ref 0013/03/05/15B and Ref. 0125/08/05/15/TNA).

In each trial, diets were formulated to cover the fish nutritional requirements which
114 differed due to fish species and age. Nevertheless, within the species, diets were formulated to be
isonitrogenous, isolipidic and isoenergetic. Therefore, comparisons of the GITM are based
116 between control and their respective replacement treatment for each species separately. *S. aurata*
juveniles (105.2±0.17g initial body weight) were fed two isoenergetic and isoproteic diets for 163
118 days: a control diet (TM0) contained 100% fishmeal (FM) and a 50% partial substitution of
fishmeal with TM (TM50). *D. labrax* juveniles (initial body weight: 5.2±0.82g) were fed two
120 isonitrogenous, isolipidic and isoenergetic diets (TM0 and TM50) for 70 days. *O. mykiss*
(115.2±14.21g initial body weight) were fed two experimental diets for 90 days, having 0% or
122 60% of TM. Fish were fed daily to apparent satiation for 90 days and reared in triplicate tanks
per treatment, for all trials. Detailed description of experiments can be found in Piccolo et al.
124 (2017) and Gasco et al. (2016).

For all trials, fish were fed to apparent satiation every day. The TM composition is
126 reported in Table 1. Moreover, TM was used as partial substitute of FM that represented the main
protein source in the control diet (0% TM). Ingredients and proximate composition of
128 experimental diets are reported in Table 1. To keep the diets isoproteic and isoenergetic, the
quantities of the other ingredients used in diets formulation were slightly modified (Table 1).
130 Since the used TM had a high fat content, the level of fish oil was dramatically reduced in TM
diets.

132 At the end of each growth trial fish were starved for 24 hrs and 10 healthy fish from each
dietary group of the examined species were removed and sacrificed by anaesthesia overdose
134 (tricaine methanesulfonate-MS222, Sigma Aldrich, St. Louis, MO, USA). After fish body weight
measurements, the midgut was removed under sterile conditions. As most of the studies don't
136 consider sample preparation for distinguishing indigenous (resident) from transient gut bacteria
(Ghanbari et al. 2015), the digesta -if present- was removed by gentle mechanical force with flat
138 forceps. The emptied midgut samples were rinsed thrice in sterile particle free distilled water,
were flash-frozen in liquid nitrogen and kept at -80°C. Stable rearing conditions were kept during
140 the trials, thus, no or little effect was expected from the recirculating water (Meziti et al. 2012,

Estruch et al. 2015, Borsodi et al. 2017) and the effect of water microbiota on the midgut
142 bacterial community composition was not assessed as the origin of the GITM was out of the
scope of this paper

144 **Molecular and sequencing analysis.** Bulk DNA was extracted from each individual fish
gut sample with the PowerMax Soil DNA Isolation kit (MoBio, Carlsbad, CA, USA) following
146 the manufacturer's protocol. Tag pyrosequencing was performed on the Roche 454 FLX titanium
platform, by targeting the V3–V4 region of the 16S rRNA gene with the primer pair S-DBact-
148 0341-b-S-17 (5'-CCTACGGGNGGCWGCAG-3') and S-D-Bact-0785-a-A-21 (5'-
GACTACHVGGGTATCTAATCC-3') (Klindworth et al. 2013) according to Dowd et al. (2008)
150 (MRDNA Ltd., Shallowater, TX, USA). Raw pyrosequencing data were processed by the
MOTHUR platform (v. 1.35.0) (Schloss et al. 2009). Quality control of data analysis included
152 denoising of the flowgrams by PyroNoise software (Quince et al. 2009); sequences with ≥ 250 bp
and no homopolymers of ≥ 8 bp were excluded for further analysis. The remaining sequences
154 were aligned in the SILVA 126 database (Pruesse et al., 2007), binned into operational
taxonomic units (OTUs) and clustered based on averageneighbour algorithm at 97% the sequence
156 similarity cut-off (Kunin et al. 2010, Stackebrandt & Goebel 1994). The unique OTUs were
taxonomically classified by using the SILVA 126 database (Pruesse et al., 2007). All sequences
158 from this study are available in the Short Reads Archive (<http://www.ncbi.nlm.nih.gov/sra>) with
accession number SRR5161931.

160

RESULTS AND DISCUSSION

162

In this paper, multiple pieces of evidence are provided showing that a high ($\geq 50\%$)
164 replacement of fishmeal with insect (*Tenebrio molitor*) meal has a differential effect on the
structure and possibly on the subsequent gut ecophysiology of gilthead sea bream (*Sparus*
166 *aurata*), European sea bass (*Dicentrarchus labrax*) and rainbow trout (*Oncorhynchus mykiss*). As
the level of TM inclusion and consequent substitution of fishmeal substitution was high (71.5 –
168 85.7%), we hypothesize that any observed shifts in the gut bacterial communities would be
attributed mainly to insect meal as the major dietary ingredient.

170 Individual variability has occurred in similar studies (Desai et al. 2012) mostly due to the
feeding practices of massively reared fish where not all individuals consumed the same amount

172 of food. The majority of the replicated samples per treatment in our study were variable with low
similarity regarding the relative abundances of the found operational taxonomic units (OTUs)
174 (Fig. S1); individual variability has been proposed for the human gut microbiota (Bashan et al.
2016) but has not yet been shown for fish gut microbiota. Since a comparable number of
176 sequence reads per treatment (Tab. 2) were obtained, we used the average sequence reads per
treatment for our analyses.

178 The first evidence for the differential effect of fishmeal replacement comes from the
increased number of OTUs after the replacement for *S. aurata* and *D. labrax*, which contrasts
180 with the decreased number of OTUs for *O. mykiss* (Tab. 2). In gut microbial communities that
undergo some kind of perturbation, more novel species are introduced due to the novel niches
182 introduced to the ecosystem (Zelezniak et al. 2015, Pereira & Berry 2016). The insect meal
replacement is most likely a deviation for the standard GIT microbiota, at least for *S. aurata* and
184 *D. labrax* and their fishmeal containing diet. The newly created nutritional niches in the *S. aurata*
and *D. labrax* gut after the replacement are also evidenced by the fact that the majority of the
186 newly appearing OTUs represent unique bacteria (62.2% and 60.0% for *S. aurata* and *D. labrax*,
respectively), i.e., species that were not detected in the 0% insect meal diet (Fig. 1). For *O.*
188 *mykiss*, only 33.0% of novel OTUs were detected after the replacement, indicating that the
nutritional background in this species was altered to a lesser degree than the two other species.

190 The meal replacement also impacted the dominant OTUs. When fed on a specific diet
each species is usually characterized by a gut bacterial community with usually a few dominant
192 species (Ringø et al. 2016, Wang et al. 2017) but this changes when there is an increased number
of bacterial species associated with more diverse diets, i.e., more nutritional niches or changing
194 environmental conditions (Givens et al. 2015); these changes have also been observed in
comparisons of farmed and wild fish GITM (Kormas et al. 2014, Ramírez & Romero 2017a, b).
196 The dominance by a few bacterial species is indicative of a more specialized habitat (e.g. Lowrey
et al. 2015, Lyons et al. 2017). In this study, although 598 OTUs were detected in total, only 8 –
198 20 of them composed >80% of the community's population in the 100% fishmeal diet; after
fishmeal replacement, the dominant OTUs dropped to 5 – 12 in the three fish species (Tab. 2).
200 However, not only very few of the shared OTUs were found before the replacement but also they
were found after the replacement for *S. aurata* and *D. labrax*, but the shared OTUs between the
202 two treatments had incomparable relative abundances (Fig. 2). For *S. aurata*, five of the eight

dominant OTUs were detected after the replacement, but the most dominant one OTU (OTU-
204 0004) before the replacement (26.8%) was not detectable in the insect meal treatment. The most
dominant OTU in *D. labrax*, OTU-0002, decreased from 17.9% to 3.6% dominance, while a total
206 of eight out of 14 dominant OTUs appeared after the replacement in *D. labrax*, when OTU-0009
was dominant (13.6%). In the *O. mykiss* midgut, 11 of the 21 dominant OTUs found before the
208 replacement were also found afterwards. The dominant OTU-0009 (10.0%) before the
replacement was the second most dominant OTU (33.3%) after the replacement, indicating that it
210 represents a bacterium that is probably favoured by the insect meal addition. This OTU is related
to a Tenericutes-associated species originating from chicken caeca (Tab. S1). The Tenericutes,
212 are amongst the protagonists of gut symbionts in fish (Lowrey et al. 2015, Gatesoupe et al. 2016,
Lyons et al. 2016, Dehler et al. 2017, Ringø et al. 2016, Wang et al. 2017) and other aquatic
214 animals with a chitin exoskeleton (Demiri et al. 2009, Meziti et al. 2012, Givens et al. 2013,
Hakim et al. 2016), indicating that they are possibly related to the metabolism of this compound.
216 OTU-0009 was also found to be the most abundant in the insect meal fed to *D. labrax* but not in
the *S. aurata*, where it might be outcompeted in the latter by another Tenericutes related
218 bacterium, OTU-0001, which is also associated with fish GIT (Tab. S1). The higher affinity of
the *O. mykiss* midgut bacteria to the insect meal diet is also supported by the fact that the relative
220 importance of the abundant, common and rare OTUs showed a different response in the three
species after the replacement (Fig. S2), with only *O. mykiss* again showing increased abundant
222 OTUs and the lowest change in new rare OTUs. Recently, it has been proposed that the transition
from rarity to abundance in bacterial populations could be related to substrate availability and
224 lability (Newton & Shade 2016) and, thus, such gut bacterial community changes might impose
some effect on fish nutrition that remains to be investigated.

226 The dominant and/or shared OTUs could be considered to be true GIT residents as their
inferred phylogeny depicts fast growers that could take over the GIT habitat; additionally, in this
228 study, most of the midgut faecal material was removed and, thus, almost exclusively the epi- and
endobionts of the GIT tissue were detected. The fast-growing capability of these bacteria is
230 suggested by their high 16S rRNA gene copy number (Tab. S1) which corresponds to high
maximum growth rates (μ_{\max}) according to Roller et al. (2016). However, as not all OTUs can be
232 safely assigned to known taxa and available genomes do not equally cover all taxa, this
speculation requires further confirmation.

234 The differential response of the three fish gut communities is not only shown in the
structural changes (above) but also in their inferred ecophysiological roles as dictated by the
236 different major taxonomic groups. Although all major bacterial phyla known to occur in other
fish gut (Sullam et al. 2012, Llewellyn et al. 2014, Estruch et al. 2015, Ringø et al. 2016, Tarnecki
238 et al. 2017, Wang et al. 2017) were also found in our study (Fig. 3, Tab. S2), the lowest number
of novel taxa (families) appearing in the gut after the meal replacement occurred in *O. mykiss*
240 (25.0% of all families before and after the meal substitution), compared to *S. aurata* (48.4%) and
D. labrax (44.0%) (Fig. 4). Although functional redundancy is common among bacterial taxa, it
242 is expected that the accumulation of new taxa appearing in a community are due to an increase in
the novel niches that are available after a perturbation (Maguran 2004). The prevalence of
244 differently expected ecophysiological roles is also shown by using the ratios between the major phyla to
which the OTUs belong (e.g. Desai et al. 2012, Givens et al. 2015, Zhu et al. 2015, Dehler et al.
246 2017), that occurred in the different treatments (Fig. 4). Based on the ratios of
Proteobacteria:Firmicutes, Proteobacteria:Bacteroidetes and Firmicutes:Bacteroidetes, only in the
248 case of *O. mykiss* did these ratios remained practically unchanged, suggesting that the changes
caused by the insect meal replacement affected the dominant phyla in this animal less compared
250 to the other two species and, therefore, fewer differences are expected. However, even in *O.*
mykiss, the ratio of Proteobacteria:Actinobacteria was nearly halved. In the human gut, for
252 example, the dominance of Proteobacteria vs. Firmicutes and/or Bacteroidetes has been suggested
to be an indication of gut dysbiosis (Shin et al. 2015). In fish GITM, Proteobacteria usually
254 dominate (Llewellyn et al. 2014, Wang et al. 2017). However, the observed changes in their
relative abundance in *S. aurata* and *D. labrax* but not in *O. mykiss*, might indicate gut imbalances
256 that need to be further investigated by comparing omics approaches and physiological assays.

The prevalence of a “natural” gut microbiota is of crucial importance for the host (Pereira
258 & Berry 2016). Our reported imbalanced gut microbiota in *S. aurata* after fish meal replacement
corroborates the findings by Piccolo et al. (2017) who in the same experiments as ours, they
260 found a lower digestibility coefficient in fish with 50% TM inclusion (78.46% for dry matter
digestibility coefficients in the TM50 group compared to 87.02% in the TM0 fish group),
262 although TM50 fish showed a similar final weight and growth performance compared to the
control group. Additionally, it is known that fish meal replacements with other ingredients
264 (Estruch et al. 2015, Parma et al. 2016, Rico et al. 2016) or other diet changes (Silva et al. 2011,

Cerezuela et al. 2013) induces gut microbiota changes in *S. aurata*, which can be reflected on fish growth parameters. Kormas et al. (2014) have recently shown that the gut of organically reared *S. aurata* more closely resembles that of wild populations than the guts of conventionally reared fish. All of the above findings, lead to the conclusion that seabream is sensitive to dietary fish meal replacements and more research is needed to elucidate the effect of dietary ingredient on gut microbiom as has also been suggested by Estruch et al. (2015) and Parma et al. (2016).

Similarly, for *D. labrax*, Gasco et al. (2016) reported that for the same experiment as in our study, *D. labrax* fed with 50% insect meal inclusion resulted in statistically significantly lower dry matter intake, weight gain, specific growth rate and protein efficiency ratio, as well as a higher mortality (Table 4 of Gasco et al. 2016). In this experiment the dominant microbes from the control (100% fish meal) treatment were not detected in the 50% insect meal inclusion treatment (Fig. 3) and the different taxonomic groups of bacteria observed between the two treatments (Fig. 4) indicate different metabolisms. Even if functional redundancy is the case, more time might be required for the selection of the new (unique) microbes to be established and form fully functional communities. Torrecillas et al. (2017) reported gut microbiota alterations after the exclusion of fish meal and the sensitivity of the *D. labrax* gut microbiota to diet alterations was also shown by Carda-Diéguez et al. (2014).

A different picture is presented for *O. mykiss*, as this species showed the fewest changes in all investigated GITM parameters after dietary MT inclusion. Most of the known bacterial taxa found in this species' gut (Navarrete et al. 2012, Ingerselv et al. 2014, Lowrey et al. 2015, Lyons et al. 2017) were also present in the current study. Similarly, Lyons et al. (2017) found an almost invariable gut microbiota before and after microalgal material feed supplementation in the same species, coupled with increased growth effects. However, fish meal replacements by soy bean based meals have impacted the gut microbiota of *O. mykiss* either negatively, i.e. more novel phylotypes (Heikkinen et al. 2006, Desai et al. 2012) or positively, i.e. fewer novel bacteria appearing after the replacement (Dimitroglou et al. 2009). In our study, the lower number of novel OTUs appearing in the *O. mykiss* after meal replacement, could be related to the animal's natural diet. A chitin-enriched diet -like the one used in the present study- probably imposes little gut microbiota changes because this species' natural diet includes insects (Power 1990).

In conclusion, the differential impact of the fish meal replacement by *Tenebrio molitor* meal on the gut bacterial community structure of the three commercially important fish species of

296 *S. aurata*, *D. labrax* and *O. mykiss*, suggests that any such feed substitutions should include an
assessment of the GITM, as these symbiotic microorganisms are inseparable from the growth-and
298 health-related metabolic features of the species. Our data also depicts that insect meal, at least in
terms of GITM changes, is more suitable for species whose natural diet includes such ingredients.

300

REFERENCES

302

Henry, M., Gasco, L., Piccolo, G., and Fountoulaki, E. (2015). Review on the use of insects in the
304 diet of farmed fish: Past and future. *Animal Feed Science and Technology* 203, 1-22.

Van Huis, A. (2013). Potential of insects as food and feed in assuring food security. *Annu Rev*
306 *Entomol* 58, 563-583.

Belforti, M., Gai, F., Lussiana, C., Renna, M., Malfatto, V., Rotolo, L., De Marco, M., Dabbou,
308 S., Schiavone, A., Zoccarato, I., and Gasco, L. (2015). *Tenebrio molitor* meal in rainbow
trout (*Oncorhynchus mykiss*) diets: Effects on animal performance, nutrient digestibility
310 and chemical composition of fillets. *Italian Journal of Animal Science* 14, 4170.

Gasco, L., Henry, M., Piccolo, G., Marono, S., Gai, F., Renna, M., Lussiana, C., Antonopoulou,
312 E., Mola, P., and Chatzifotis, S. (2016). *Tenebrio molitor* meal in diets for European sea
bass (*Dicentrarchus labrax* L.) juveniles: Growth performance, whole body composition
314 and in vivo apparent digestibility. *Animal Feed Science and Technology* 220, 34-45.

Lock, E.R., Arsiwalla, T., and Waagbø, R. (2016). Insect larvae meal as an alternative source of
316 nutrients in the diet of Atlantic salmon (*Salmo salar*) postsmolt. *Aquaculture Nutrition* 22,
1202-1213.

Piccolo, G., Iaconisi, V., Marono, S., Gasco, L., Loponte, R., Nizza, S., Bovera, F., and Parisi, G.
318 (2017). Effect of *Tenebrio molitor* larvae meal on growth performance, *in vivo* nutrients
digestibility, somatic and marketable indexes of gilthead sea bream (*Sparus aurata*).
320 *Animal Feed Science and Technology* 226, 12-20.

Iaconisi, V., Marono, S., Parisi, G., Gasco, L., Genovese, L., Maricchiolo, G., Bovera, F., and
322 Piccolo, G. (2017). Dietary inclusion of *Tenebrio molitor* larvae meal: Effects on growth
performance and final quality traits of blackspot sea bream (*Pagellus bogaraveo*).
324 *Aquaculture* 476, 49-58.

326 Renna, M., Schiavone, A., Gai, F., Dabbou, S., Lussiana, C., Malfatto, V., Prearo, M., Capucchio,

328 M.T., Biasato, I., Biasibetti, E., De Marco, M., Brugiapaglia, A., Zoccarato, I., and Gasco,
L. (2017). Evaluation of the suitability of a partially defatted black soldier fly (*Hermetia
330 illucens* L.) larvae meal as ingredient for rainbow trout (*Oncorhynchus mykiss*Walbaum)
diets. *Journal of Animal Science and Biotechnology* 8, 57.

332 Estruch, G., Collado, M.C., Peñaranda, D.S., Tomás Vidal, A., JoverCerdá, M., Pérez Martínez,
G., and Martínez-Llorens, S. (2015). Impact of fishmeal replacement in diets for gilthead
sea bream *Sparus aurata* on the gastrointestinal microbiota determined by pyrosequencing
334 the 16S rRNA gene. *PLoS ONE* 10, e0136389.

336 Parma, L., Candela, M., Soverini, M., Turroni, S., Consolandi, C., Brigidi, P., Mandrioli, L., Sirri,
R., Fontanillas, R., Gatta, P.P., and Bonaldo, A. (2016). Next-generation sequencing
338 characterization of the gut bacterial community of gilthead sea bream (*Sparus aurata*, L.)
fed low fishmeal based diets with increasing soybean meal levels. *Animal Feed Science and
Technology* 222, 204-216.

340 Schmidt, V., Amaral-Zettler, L., Davidson, J., Summerfelt, S., and Good, C. (2016). Influence of
fishmeal-free diets on microbial communities in Atlantic salmon (*Salmo salar*)
342 recirculation aquaculture systems. *Applied and Environmental Microbiology* 82, 4470-
4481.

344 Li, D., Wang, P., Wang, P., Hu, X., and Chen, F. (2016). The gut microbiota: A treasure for
human health. *Biotechnology Advances* 34, 1210-1224.

346 Mu, C., Yang, Y., and Zhu, W. (2016). Gut microbiota: the brain peacekeeper. *Frontiers in
Microbiology* 7, 345.

348 Santigosa, E., García-Meilán, I., Valentin, J.M., Pérez-Sánchez, J., Médale, F., Kaushik, S., and
Gallardo, M.A. (2011). Modifications of intestinal nutrient absorption in response to dietary
350 fish meal replacement by plant protein sources in sea bream (*Sparus aurata*) and rainbow
trout (*Oncorhynchus mykiss*). *Aquaculture* 317, 146-154.

352 Baeza-Ariño, R., Martínez-Llorens, S., Nogales-Mérida, S., Jover-Cerda, M., and Tomás-Vidal,
A. (2016). Study of liver and gut alterations in sea bream, *Sparus aurata* L., fed a mixture
354 of vegetable protein concentrates. *Aquaculture Research* 47, 460-471.

356 Sánchez, B., Delgado, S., Blanco-Míguez, A., Lourenço, A., Gueimonde, M., and Margolles, A.
(2017). Probiotics, gut microbiota, and their influence on host health and disease.
Molecular Nutrition & Food Research 61,1600240.

- 358 Ringø, E., Strøm, E., and Tabachek, J.A. (1995). Intestinal microflora of salmonids: a review.
Aquaculture Research 26, 773-789.
- 360 Sullam, K.E., Essinger, S.D., Lozupone, C.A., O'connor, M.P., Rosen, G.L., Knight, R.O.B.,
Kilham, S.S., and Russell, J.A. (2012). Environmental and ecological factors that shape the
362 gut bacterial communities of fish: a meta-analysis. *Molecular Ecology* 21, 3363-3378.
- Givens, C., Ransom, B., Bano, N., and Hollibaugh, J. (2015). Comparison of the gut microbiomes
364 of 12 bony fish and 3 shark species. *Marine Ecology Progress Series* 518, 209-223.
- Llewellyn, M.S., Boutin, S., Hoseinifar, S.H., and Derome, N. (2014). Teleost microbiomes: the
366 state of the art in their characterization, manipulation and importance in aquaculture and
fisheries. *Frontiers in Microbiology* 5,207.
- 368 Ghanbari, M., Kneifel, W., and Domig, K.J. (2015). A new view of the fish gut microbiome:
Advances from next-generation sequencing. *Aquaculture* 448, 464-475.
- 370 Wang, A.R., Ran, C., Ringø, E., and Zhou, Z.G. (2017). Progress in fish gastrointestinal
microbiota research. *Reviews in Aquaculture*,doi:10.1111/raq.12191
- 372 Ringø, E., Zhou, Z., Vecino, J.L.G., Wadsworth, S., Romero, J., Krogdahl, Å., Olsen, R.E.,
Dimitroglou, A., Foey, A., Davies, S., Owen, M., Lauzon, H.L., Martinsen, L.L., De
374 Schryver, P., Bossier, P., Sperstad, S., and Merrifield, D.L. (2016). Effect of dietary
components on the gut microbiota of aquatic animals. A never-ending story? *Aquaculture*
376 *Nutrition* 22, 219-282.
- Magurran, A. E. (2004). *Measuring biological diversity*. Blackwell Publishing.
- 378 Kirchman, D. L. (2012). *Processes in microbial ecology*. Oxford University Press.
- Pereira, F.C., and Berry, D. (2017). Microbial nutrient niches in the gut. *Environmental*
380 *Microbiology* 19, 1366-1378.
- Desai, A.R., Links, M.G., Collins, S.A., Mansfield, G.S., Drew, M.D., Van Kessel, A.G., and
382 Hill, J.E. (2012). Effects of plant-based diets on the distal gut microbiome of rainbow trout
(*Oncorhynchus mykiss*). *Aquaculture* 350, 134-142.
- 384 Bashan, A., Gibson, T.E., Friedman, J., Carey, V.J., Weiss, S.T., Hohmann, E.L., and Liu, Y.-Y.
(2016). Universality of human microbial dynamics. *Nature* 534, 259-262.
- 386 Zelezniak, A., Andrejev, S., Ponomarova, O., Mende, D.R., Bork, P., and Patil, K.R. (2015).
Metabolic dependencies drive species co-occurrence in diverse microbial communities.
388 *Proceedings of the National Academy of Sciences* 112, 6449-6454.

- 390 Kormas, K.A., Meziti, A., Mente, E., and Frentzos, A. (2014). Dietary differences are reflected
on the gut prokaryotic community structure of wild and commercially reared sea bream
(*Sparus aurata*). *MicrobiologyOpen* 3, 718-728.
- 392 Ramírez, C., and Romero, J. (2017a). Fine Flounder (*Paralichthys adspersus*) Microbiome
showed important differences between wild and reared specimens. *Frontiers in*
394 *Microbiology* 8,271.
- Ramírez, C., and Romero, J. (2017b). The microbiome of *Seriola lalandi* of wild and aquaculture
396 origin reveals differences in composition and potential function. *Frontiers in Microbiology*
8,1844.
- 398 Lowrey, L., Woodhams, D.C., Tacchi, L., and Salinas, I. (2015). Topographical mapping of the
rainbow trout (*Oncorhynchus mykiss*) microbiome reveals a diverse bacterial community
400 with antifungal properties in the skin. *Applied and Environmental Microbiology* 81, 6915-
6925.
- 402 Lyons, P.P., Turnbull, J.F., Dawson, K.A., and Crumlish, M. (2017). Effects of low-level dietary
microalgae supplementation on the distal intestinal microbiome of farmed rainbow trout
404 *Oncorhynchus mykiss* (Walbaum). *Aquaculture Research* 48, 2438-2452.
- Gatesoupe, F.-J., Huelvan, C., Le Bayon, N., Le Delliou, H., Madec, L., Mouchel, O., Quazuguel,
406 P., Mazurais, D., and Zambonino-Infante, J.-L. (2016). The highly variable microbiota
associated to intestinal mucosa correlates with growth and hypoxia resistance of sea bass,
408 *Dicentrarchus labrax*, submitted to different nutritional histories. *BMC Microbiology* 16,
266.
- 410 Lyons, P.P., Turnbull, J.F., Dawson, K.A., and Crumlish, M. (2017). Phylogenetic and functional
characterization of the distal intestinal microbiome of rainbow trout *Oncorhynchus mykiss*
412 from both farm and aquarium settings. *Journal of Applied Microbiology* 122, 347-363.
- Dehler, C.E., Secombes, C.J., and Martin, S.A.M. (2017). Environmental and physiological
414 factors shape the gut microbiota of Atlantic salmon parr (*Salmo salar* L.). *Aquaculture* 467,
149-157.
- 416 Demiri, A., Meziti, A., Papaspyrou, S., Thessalou-Legaki, M., and Kormas, K.A. (2009).
Abdominal setae and midgut bacteria of the mudshrimp *Pestarella tyrrhena*. *Central*
418 *European Journal of Biology* 4, 558-566.
- Meziti, A., Mente, E., and Kormas, K.A. (2012). Gut bacteria associated with different diets in

420 reared *Nephrops norvegicus*. *Systematic and Applied Microbiology* 35, 473-482.

Hakim, J.A., Koo, H., Kumar, R., Lefkowitz, E.J., Morrow, C.D., Powell, M.L., Watts, S.A., and
422 Bej, A.K. (2016). The gut microbiome of the sea urchin, *Lytechinus variegatus*, from its
natural habitat demonstrates selective attributes of microbial taxa and predictive metabolic
424 profiles. *FEMS Microbiology Ecology* 92, fiw146.

Newton, R.J., and Shade, A. (2016). Lifestyles of rarity: understanding heterotrophic strategies to
426 inform the ecology of the microbial rare biosphere. *Aquatic Microbial Ecology* 78, 51-63.

Roller, B.R.K., Stoddard, S.F., and Schmidt, T.M. (2016). Exploiting rRNA operon copy number
428 to investigate bacterial reproductive strategies. *Nature Microbiology* 1, 16160.

Tarnecki, A.M., Burgos, F.A., Ray, C.L., and Arias, C.R. (2017). Fish intestinal microbiome:
430 diversity and symbiosis unravelled by metagenomics. *Journal of Applied Microbiology*
123, 2-17.

432 Zhu, Y., Wang, C., and Li, F. (2015). Impact of dietary fiber/starch ratio in shaping caecal
microbiota in rabbits. *Canadian Journal of Microbiology* 61, 771-784.

434 Shin, N.-R., Whon, T.W., and Bae, J.-W. (2015). Proteobacteria: microbial signature of dysbiosis
in gut microbiota. *Trends in Biotechnology* 33, 496-503.

436 Rico, R.M., Tejedor-Junco, M.T., Tapia-Paniagua, S.T., Alarcón, F.J., Mancera, J.M., López-
Figuerola, F., Balebona, M.C., Abdala-Díaz, R.T., and Moriñigo, M.A. (2016). Influence of
438 the dietary inclusion of *Gracilaria cornea* and *Ulvarigida* on the biodiversity of the
intestinal microbiota of *Sparus aurata* juveniles. *Aquaculture International* 24, 965-984.

440 Silva, F.C.D.P., Nicoli, J.R., Zambonino-Infante, J.L., Kaushik, S., and Gatesoupe, F.-J. (2011).
Influence of the diet on the microbial diversity of faecal and gastrointestinal contents in
442 gilthead sea bream (*Sparus aurata*) and intestinal contents in goldfish (*Carassius auratus*).
FEMS Microbiology Ecology 78, 285-296.

444 Cerezuela, R., Fumanal, M., Tapia-Paniagua, S.T., Meseguer, J., Moriñigo, M.Á., and Esteban,
M.Á. (2013). Changes in intestinal morphology and microbiota caused by dietary
446 administration of inulin and *Bacillus subtilis* in gilthead sea bream (*Sparus aurata* L.)
specimens. *Fish & Shellfish Immunology* 34, 1063-1070.

448 Torrecillas, S., Mompel, D., Caballero, M.J., Montero, D., Merrifield, D., Rodiles, A., Robaina,
L., Zamorano, M.J., Karalazos, V., Kaushik, S., and Izquierdo, M. (2017). Effect of
450 fishmeal and fish oil replacement by vegetable meals and oils on gut health of European sea

- bass (*Dicentrarchus labrax*). *Aquaculture* 468, Part 1, 386-398.
- 452 Carda-Diéguez, M., Mira, A., and Fouz, B. (2014). Pyrosequencing survey of intestinal
microbiota diversity in cultured sea bass (*Dicentrarchus labrax*) fed functional diets. *FEMS*
454 *Microbiology Ecology* 87, 451-459.
- Navarrete, P., Magne, F., Araneda, C., Fuentes, P., Barros, L., Opazo, R., Espejo, R., and
456 Romero, J. (2012). PCR-TTGE analysis of 16S rRNA from rainbow trout (*Oncorhynchus*
mykiss) gut microbiota reveals host-specific communities of active bacteria. *PLoS ONE* 7,
458 e31335.
- Ingerslev, H.C., Von Gersdorff-Jørgensen, L., Lenz Strube, M., Larsen, N., Dalsgaard, I., Boye,
460 M., and Madsen, L. (2014). The development of the gut microbiota in rainbow trout
(*Oncorhynchus mykiss*) is affected by first feeding and diet type. *Aquaculture* 424-425, 24-
462 34.
- Heikkinen, J., Vielma, J., Kemiläinen, O., Tirola, M., Eskelinen, P., Kiuru, T., Navia-Paldanius,
464 D., and Von Wright, A. (2006). Effects of soybean meal based diet on growth performance,
gut histopathology and intestinal microbiota of juvenile rainbow trout (*Oncorhynchus*
466 *mykiss*). *Aquaculture* 261, 259-268.
- Dimitroglou, A., Merrifield, D.L., Moate, R., Davies, S.J., Spring, P., Sweetman, J., and Bradley,
468 G. (2009). Dietary mannan oligosaccharide supplementation modulates intestinal microbial
ecology and improves gut morphology of rainbow trout, *Oncorhynchus mykiss* (Walbaum).
470 *Journal of Animal Science* 87, 3226-3234.
- Power, M.E. (1990). Effects of fish in river food webs. *Science* 250, 811-814.
- 472 Borsodi, A.K., Szabó, A., Krett, G., Felföldi, T., Specziár, A., and Boros, G. (2017). Gut content
microbiota of introduced bigheaded carps (*Hypophthalmichthys* spp.) inhabiting the largest
474 shallow lake in Central Europe. *Microbiological Research* 195, 40-50.
- Klindworth, A., Pruesse, E., Schweer, T., Peplies, J.R., Quast, C., Horn, M., and Glöckner, F.O.
476 (2012). Evaluation of general 16S ribosomal RNA gene PCR primers for classical and
next-generation sequencing-based diversity studies. *Nucleic Acids Research* 41, e1.
- 478 Dowd, S., Callaway, T., Wolcott, R., Sun, Y., Mckeehan, T., Hagevoort, R., and Edrington, T.
(2008). Evaluation of the bacterial diversity in the feces of cattle using 16S rDNA bacterial
480 tag-encoded FLX amplicon pyrosequencing (bTEFAP). *BMC Microbiology* 8:125.
- Schloss, P.D., Westcott, S.L., Ryabin, T., Hall, J.R., Hartmann, M., Hollister, E.B., Lesniewski,

482 R.A., Oakley, B.B., Parks, D.H., Robinson, C.J., Sahl, J.W., Stres, B., Thallinger, G.G.,
Van Horn, D.J., and Weber, C.F. (2009). Introducing mothur: Open-source, platform-
484 independent, community-supported software for describing and comparing microbial
communities. *Applied and Environmental Microbiology* 75, 7537-7541.

486 Quince, C., Lanzen, A., Curtis, T.P., Davenport, R.J., Hall, N., Head, I.M., Read, L.F., and Sloan,
W.T. (2009). Accurate determination of microbial diversity from 454 pyrosequencing data.
488 *Nature Methods* 6, 639-641.

Pruesse, E., Quast, C., Knittel, K., Fuchs, B., Ludwig, W., Peplies, J., and Glöckner, F. (2007).
490 SILVA: a comprehensive online resource for quality checked and aligned ribosomal RNA
sequence data compatible with ARB. *Nucleic Acids Research* 35, 7188-7196.

492 Kunin, V., Engelbrektsen, A., Ochman, H., and Hugenholtz, P. (2010). Wrinkles in the rare
biosphere: pyrosequencing errors can lead to artificial inflation of diversity estimates.
494 *Environmental Microbiology* 12, 118-123.

Stackenbrandt, E., and Goebel, B.M. (1994). Taxonomic note: A place for DNA-DNA
496 reassociation and 16S rRNA sequence analysis in the present species definition in
bacteriology. *International Journal of Systematic and Evolutionary Microbiology* 44, 846-
498 849.

500 **ACKNOWLEDGMENTS**

502 The research on *S. aurata* was performed with the financial support of Ateneo Project (ex-
60%) funded by the University of Florence. The research on *D. labrax* was performed with the
504 financial support of the AQUAEXEL Projects PROINSECTLIFE (ref. n° 0013/03/05/15B) and
INDIFISH (ref. no. 0125/08/05/15/TNA), and the University of Turin (ex 60%) grant (Es. fin.
506 2014). The research on *O. mykiss* was supported by the University of Turin (ex 60%) grant (Es.
fin. 2014).

508

AUTHOR CONTRIBUTIONS

510

512 LG, GP, FG, SC, EA: performed the fish growth experiments; EN: contributed to
molecular and bioinformatics analysis, EM: contributed to data analysis, KAK: analysed bacterial
diversity data, wrote the first draft of the summary on which the rest of authors contributed.

514

CONFLICT OF INTEREST

516

All authors declare no financial/commercial conflicts of interest.

518

520 **Table 1.** Ingredients and proximate composition of *Tenebrio molitor* larvae meal (TM) and
 experimental diets using $\geq 50\%$ TM meal inclusion in *Sparus aurata*, *Dicentrarchus labrax* and
 522 *Oncorhynchus mykiss*.

	<i>S. aurata</i> ¹		<i>D. labrax</i> ²		<i>O. mykiss</i> ³		
	TM	TM0	TM50	TM0	TM50	TM0	TM60
Ingredients (g kg⁻¹)							
Fish meal		500	130	700	200	700	100
<i>Tenebrio molitor</i> larvae meal		0	500	0	500	0	600
Corn gluten meal		150	130	0	0	0	37
Wheatglutenmeal		0	0	50	150	0	0
Wheat bran		0	0	55	25	57	50
Wheat meal		0	0	92	80	40	40
Gelatinized starch		180	150	0	12	33	100
Fish oil		140	60	90	20	150	53
Vit-min		20	20	4	4	20	20
Amino acids		0	0	9	9	0	0
Carboximethylcellulose		10	10	0	0	0	0
Chemical composition³							
DM (g kg ⁻¹)	939	951	952	920	917	956	949
Ash (g kg ⁻¹ , as fed)	47	89	50	115	57	107	82
CP (g kg ⁻¹ , as fed)	519	438	430	548	546	424	413
EE (g kg ⁻¹ , as fed)	236	193	194	152	157	213	211
Gross Energy (MJ kg ⁻¹ , as fed)	24.4	21.81	21.10	21.29	22.62	22.82	23.13

524 Abbreviations: DM, dry matter; CP, crude protein; EE, ether extract

526 ¹: from Piccolo et al., 2017; ²: from Gasco et al., 2016; ³ Values are reported as mean of duplicate
 analyses

528

530 **Table 2.** Cumulative bacterial sequence reads and operational taxonomic units (OTUs) in the
 midgut of *Sparus aurata*, *Dicentrarchus labrax* and *Oncorhynchus mykiss* after a dietary
 inclusion of 50% or 60% of *Tenebrio molitor* larvae meal (TM).

532

<i>TM</i>	<i>No. of reads</i>	<i>No. of OTUs</i>	<i>Average relative abundance (%) of the most abundant OTU</i>	<i>No. of dominant OTUs*</i>
<i>S. aurata</i>				
0%	1977	28	26.8	8
50%	2093	55	30.2	5
<i>D. labrax</i>				
0%	4114	28	17.9	10
50%	4923	54	13.6	12
<i>O. mykiss</i>				
0%	832	69	10.0	20
60%	1411	54	46.0	8

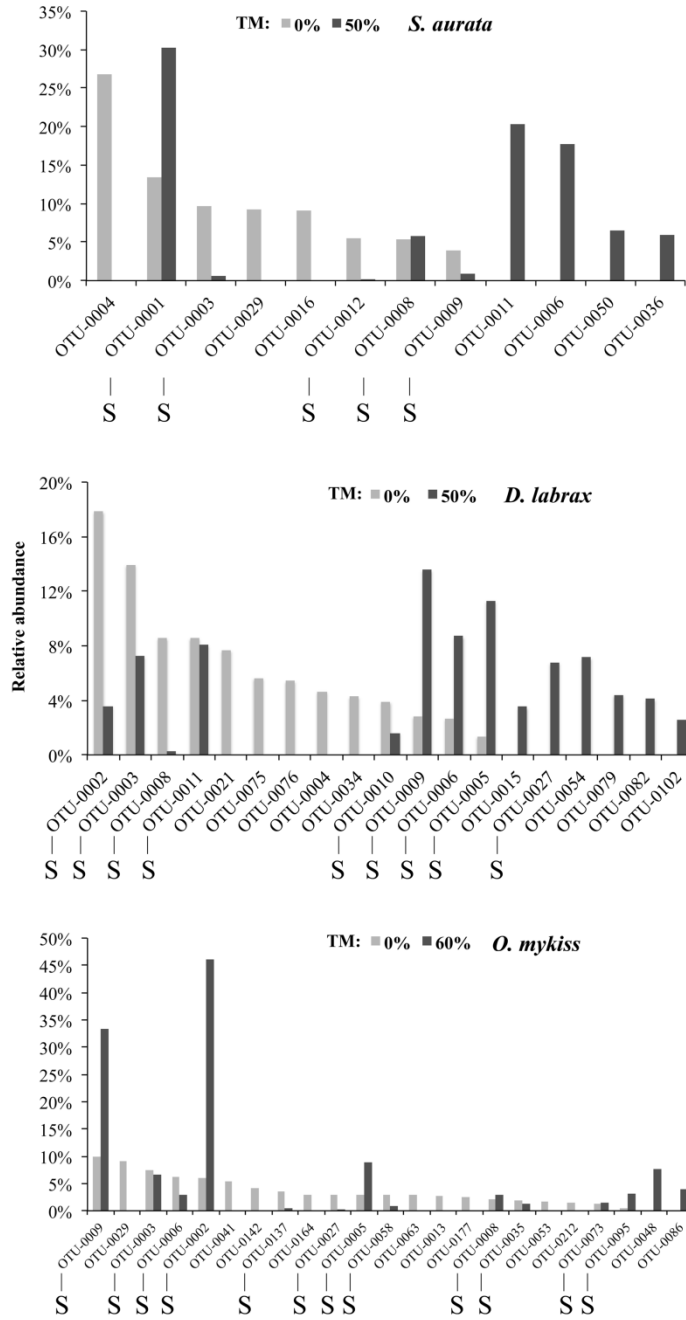
* Cumulative relative abundance $\geq 80\%$ per treatment.

534



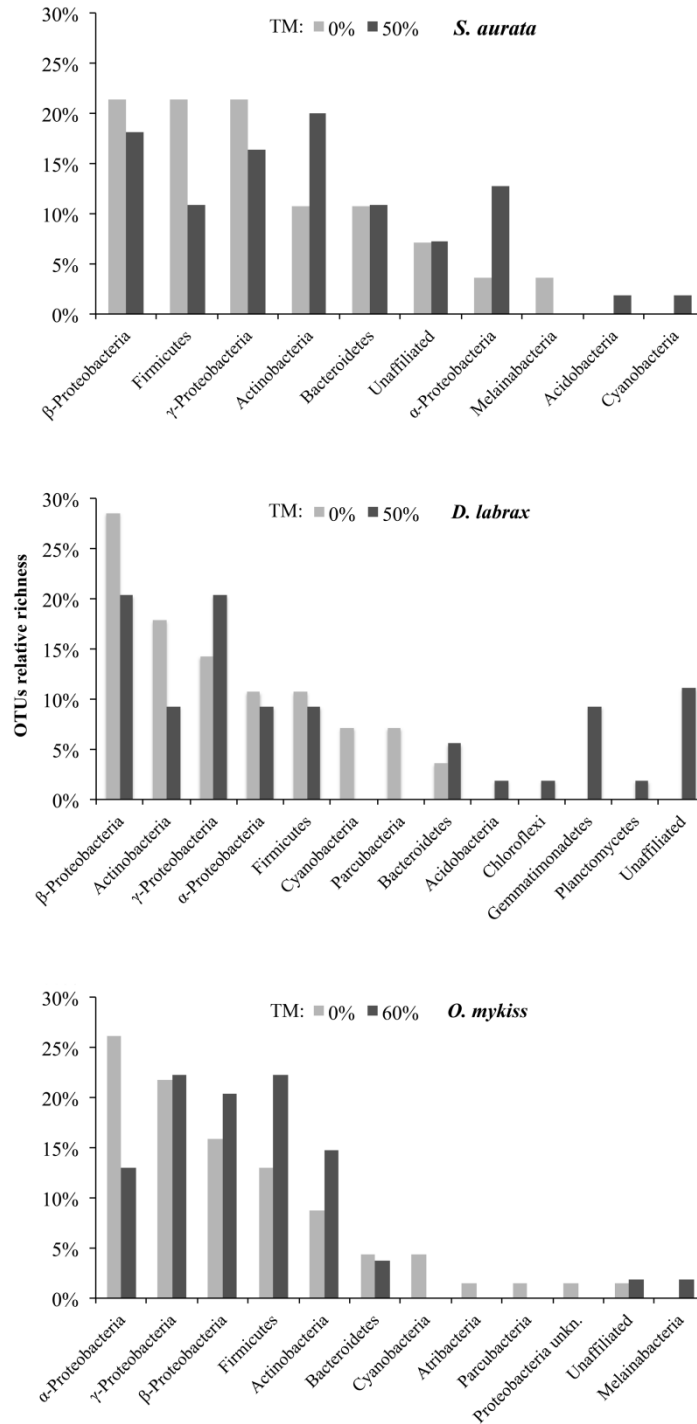
536

Figure 1. Number of shared operational taxonomic units in the midgut of *Sparus aurata*,
 538 *Dicentrarchus labrax* and *Oncorhynchus mykiss* after a dietary inclusion of 50% or 60% of
Tenebriomolitor larvae meal.



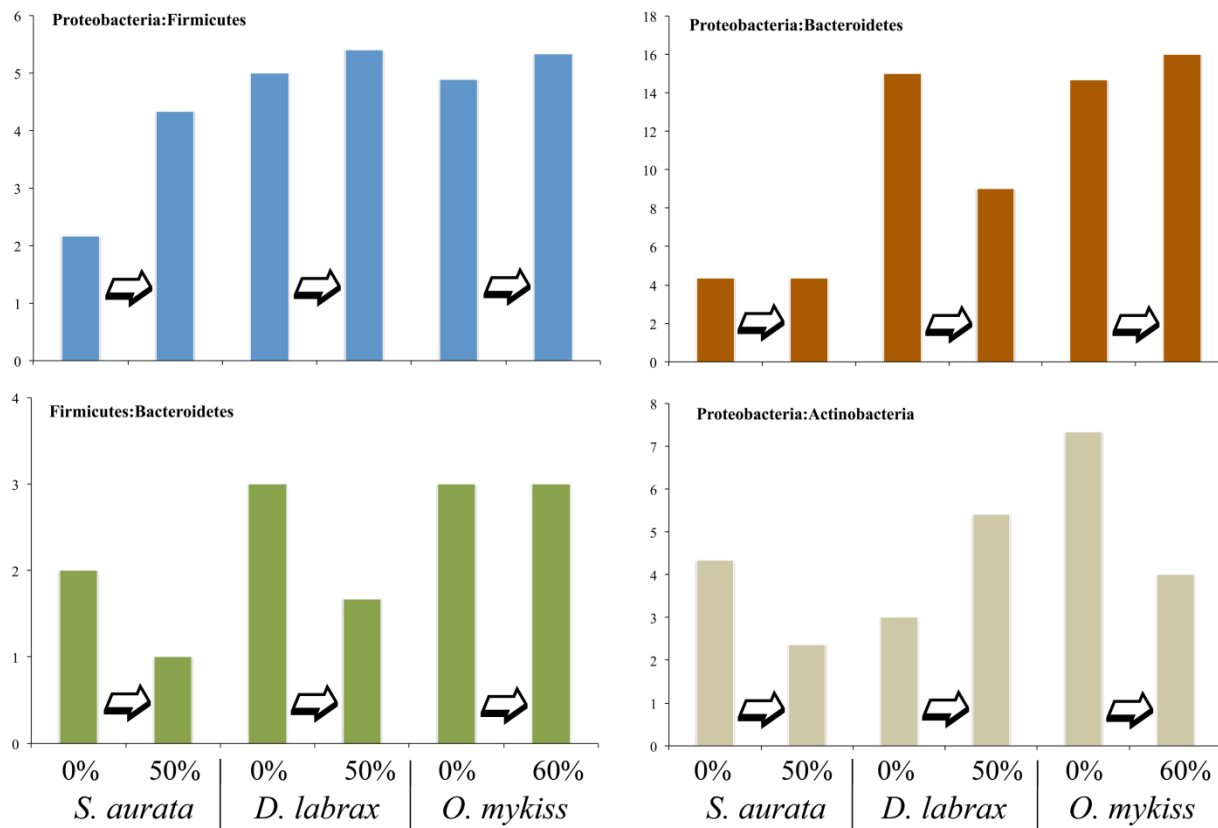
540

542 **Figure 2.** Changes of the most abundant (cumulative abundance $\geq 80\%$ per treatment) operational
 543 taxonomic units (OTUs) in the midgut of *Sparus aurata*, *Dicentrarchus labrax* and
 544 *Oncorhynchus mykiss* after a dietary inclusion of 50% or 60% of *Tenebrio molitor* larvae meal
 (TM). S: shared between the two treatments. Note that OTUs are placed in decreasing order of
 546 relative abundance of the 0% TM treatment.



548

550 **Figure 3.** Taxonomic affiliation of the operational taxonomic units (OTUs) found in the midgut
 of *Sparus aurata*, *Dicentrarchus labrax* and *Oncorhynchus mykiss* after a dietary inclusion of
 552 50% or 60% of *Tenebrio molitor* larvae meal (TM). Note that phyla are placed in decreasing
 order of their relative abundance of the 0% TM treatment.



554

556 **Figure 4.** Change of the most abundant bacterial phyla occurring in the midgut of *Sparus aurata*,
 558 *Dicentrarchus labrax* and *Oncorhynchus mykiss* after a dietary inclusion of 50% or 60% of
 558 *Tenebrio molitor* larvae meal (TM).

Reshaping gut bacterial communities after dietary *Tenebrio molitor* larvae meal supplementation in three different fish species

Efthimia Antonopoulou¹, Eleni Nikouli², Giovanni Piccolo³, Laura Gasco^{4,5}, Francesco Gai⁵, Stavros Chatzifotis⁶, Eleni Mente², Konstantinos Ar. Kormas^{2*}

¹ Laboratory of Animal Physiology, Department of Zoology, School of Biology, Aristotle University of Thessaloniki, 541 24 Thessaloniki, Greece

² Department of Ichthyology and Aquatic Environment, School of Agricultural Sciences, University of Thessaly, 384 46 Volos, Greece

³ Department of Veterinary Medicine and Animal Production, University of Naples Federico II, Via F. Delpino 1, 80137 Naples, Italy

⁴ Department of Agricultural, Forest and Food Sciences, University of Turin, Largo P. Braccini 2, 10095 Grugliasco, TO, Italy

⁵ Institute of Science of Food Production, National Research Council, Largo P. Braccini 2, 10095 Grugliasco (TO), Italy

⁶ Institute of Marine Biology, Biotechnology and Aquaculture, Hellenic Centre for Marine Research, Gournes Pediados P.O. Box 2214, 71003 Heraklion, Crete, Greece

* Corresponding author; Tel.: +30-242-109-3082, Fax: +30-242109-3157, E-mail: kkormas@uth.gr, kkormas@gmail.com

Supplementary information

Table S1. Most abundant (cumulative relative abundance per treatment >80%) operational taxonomic units (OTU) found in the midgut of commercially reared *Sparus aurata* (*Sa*), *Dicentrarchus labrax* (*DI*) and *Oncorhynchus mykiss* (*Om*).

OTU	Found in	Closest relative	Similarity (%)	GenBank accession No	Habitat of origin	Average \pm SD number of 16S rRNA gene copies*
0001	<i>Sa</i>	Clone TP-2 (Tenericutes)	95.8	DQ340193	<i>Gillichthys mirabilis</i> (mudsucker, estuarine fish) gut	-
0002	<i>DI/Om</i>	TTGE gel band N123 (\approx Firmicutes)	100.0	JN185158	<i>Oncorhynchus mykiss</i> gut	-
0003	<i>Sa/DI/Om</i>	<i>Pseudomonas</i> sp. (Pseudomonadales)	100.0	KF366100	<i>Danaus plexippus</i> (overwintering butterflies) midgut	<i>Pseudomonas</i> spp. (N=208) ?? = 4.9 ± 1.25
0004	<i>Sa</i>	Clone 25	100.0	DQ889971	Juvenile Atlantic salmon (<i>Salmo salar</i>) digestive tract	-
0005	<i>DI/Om</i>	<i>Cetobacterium somerae</i> 23 (Fusobacteriales)	97.9	HG326498	<i>Siganus canaliculatus</i> (rabbitfish, coral reef) gut	<i>Cetobacterium</i> spp. (N=2): ?? = 1 ± 0
0006	<i>Sa/DI/Om</i>	Bio-material L100	99.6	HG966676	<i>Pisum sativum</i> subsp. <i>elatius</i> (wild pea) chloroplast	-
0008	<i>Sa/DI/Om</i>	<i>Weissella confuse</i> (Lactobacillales)	100.0	LC127180	Human faeces	<i>Weissella</i> spp. ?? = 7.6 ± 1.94
0009	<i>Sa/DI/Om</i>	Clone T-RFLP_clone_K44 (\approx Tenericutes)	100.0	KP780113	Chicken caeca	-
0010	<i>DI</i>	<i>Pseudomonas brenneri</i> (Pseudomonadales)	100.0	KU750791	Rhizosphere from <i>Lepidium meyenii</i> (maca)	<i>Pseudomonas</i> spp. (N=208) ?? = 4.9 ± 1.25
0011	<i>Sa/DI</i>	Clone Sch1000_2	99.6	HE586962	Freshwater fish gut	-
0012	<i>Sa</i>	Clone FecI096 (Lactobacillales)	100.0	KM244870	Faecal matter of pigs under indoor system	-
0015	<i>DI</i>	Clone OTU0162 (Pseudomonadales)	100.0	KM059059	<i>Bactrocera minax</i> (Chinese citrus fly) gut and reproductive organ	-
0016	<i>Sa</i>	<i>Plesiomonas shigelloides</i> (Enterobacteriales)	100.0	DQ822763	Intestinal bacteria of freshwater salmon <i>Salmo salar</i> and sea trout <i>Salmo trutta trutta</i> and diet	<i>P. shigelloides</i> NCTC10360 ?? = 11

0021	<i>Dl</i>	<i>Streptococcus equinus</i> (Lactobacillales)	100.0	LC145574	Cow faces	<i>Streptococcus</i> spp. (N=220) ?? = 5.1 ± 1.26
0027	<i>Dl/Om</i>	Clone A292_NCI	100.0	FJ456668	<i>Notothenia coriiceps</i> (Southern Ocean fish) intestinal content	
0029	<i>Sa/Om</i>	<i>Streptococcus oralis</i> (Lactobacillales)	100.0	CP019562	<i>Homo sapiens</i> blood	<i>Streptococcus oralis</i> (N=1) ?? = 4
0034	<i>Dl</i>	<i>Acinetobacter johnsonii</i> (γ -Proteobacteria)	99.7	AB859672	Human duodenum	<i>Acinetobacter johnsonii</i> (N=1) ?? = 7
0035	<i>Om</i>	<i>Diaphorobacter polyhydroxybutyrativorans</i> (β -Proteobacteria)	100.0	KU041595	<i>Holotrichia serrata</i> gut	-
0036	<i>Sa</i>	<i>Bacillus circulans</i> (Firmicutes)	100.0	LT223624	Human stool	<i>Bacillus</i> spp. ?? = 10.5 ± 2.46
0041	<i>Om</i>	Clone YZ19	100.0	KJ457337	Intestinal tract of three spotted seahorse	-
0048	<i>Om</i>	Clone SEVICE011	100.0	JQ407962	Horizontal subsurface flow constructed wetland treating domestic wastewaters	-
0050	<i>Sa</i>	<i>Saccharopolyspora gloriosae</i> (Actinobacteria)	99.7	JX007996	Marine sponge	<i>Saccharopolyspora erythraea</i> (N=1) ?? = 1
0053	<i>Om</i>	<i>Bacillus niabensis</i> (Firmicutes)	100.0	LT223631	Human stool	<i>Bacillus</i> spp. (N=292) ?? = 10.5 ± 2.46
0054	<i>Dl</i>	Clone C77	100.0	KC633566	Activated sludge of a full-scale wastewater treatment plant	-
0058	<i>Om</i>	<i>Acidovorax</i> sp. (β -proteobacteria)	100.0	KF003188	Grass carp gut mucus	<i>Acidovorax</i> spp. (N=6) ?? = 3 ± 0.00
0063	<i>Om</i>	<i>Chryseobacterium pallidum</i> (Flavobacteriales)	99.6	KU362282	Soil	<i>Chryseobacterium</i> spp. (N=4): ?? = 6.3 ± 0.50
0073	<i>Om</i>	<i>Brevundimonas naejangsanensis</i> (α -Proteobacteria)	100.0	KX223755	Sludge of an anaerobic digestion reactor	<i>Brevundimonas</i> spp. (N=4) ?? = 2 ± 0.00
0075	<i>Dl</i>	Clone AquaspiC	100.0	AY322153	Micromanipulated cells from activated sludge	-

0076	<i>DI</i>	Clone T0-An-20C-25	100.0	JX105530	Ornamental fish aquaria	-
0079	<i>DI</i>	Clone TX2_4J13	92.7	JN178241	Extreme saline-alkaline soil of the former lake Texcoco	-
0082	<i>DI</i>	Clone BF2E04	100.0	JN820212	ferromanganese deposit	-
0086	<i>Om</i>	Clone RII-AN118	99.7	JQ580497	Sediments from Rodas Beach polluted with crude oil	-
0095	<i>Om</i>	Clone ELU0062-T425-S-NIPCRAMgANa_000345	99.5	HQ768070	<i>Homo sapiens</i> gastrointestinal specimens	-
0102	<i>DI</i>	Clone TX5A_63	100.0	FJ152771	Alkaline saline soils of the former lake Texcoco	-
0137	<i>Om</i>	<i>Hyphomicrobium</i> sp. (α -Proteobacteria)	99.4	FJ536930	Waste-activated sludge from municipal waste water treatment plant	<i>Hyphomicrobium</i> spp. (N=4) ?? = 1 \pm 0.00
0142	<i>Om</i>	Clone nby369a03c1	100.0	HM810474	Back swab from shaved skin or wound of mouse deficient in the leptin receptor	-
0164	<i>Om</i>	Clone SIN1595	99.2	HM126967	Chaerhan Lake	-
0177	<i>Om</i>	Clone D32	99.5	KJ808142	Activated sludge	-
0212	<i>Om</i>	Clone ML71101eO6	95.6	JN615992	White microbial mat from lava cave wall	-

* From Microbial Genome Resources (https://www.ncbi.nlm.nih.gov/genomes/MICROBES/microbial_taxtree.html) or *rrn*DB (<https://rrndb.umms.med.umich.edu/>), accessed, 31/03/2017.

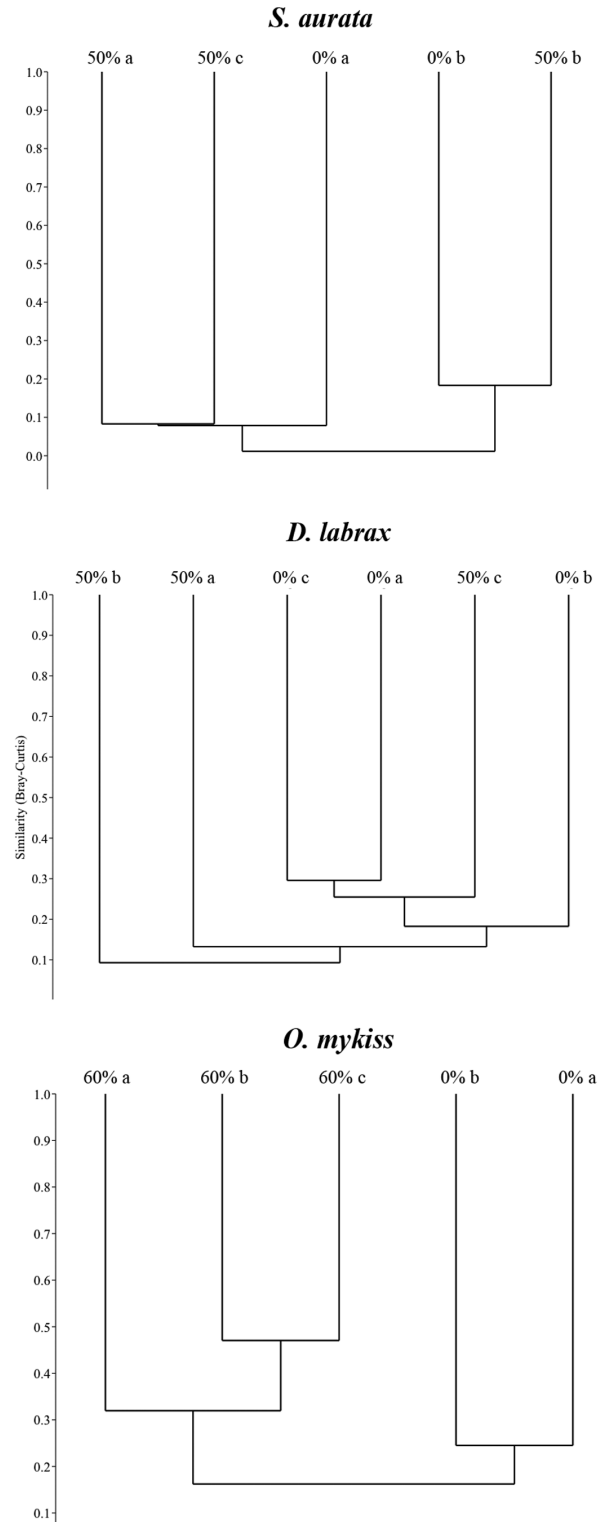


Figure S1. Percentage change of the midgut operational taxonomic units number from 0% to 50% (*Sparus aurata*, *Dicentrarchus labrax*) or 60% (*Oncorhynchus mykiss*) insect meal inclusion. Rare: <1%, common: 1-10%, abundant: >10% relative abundance.

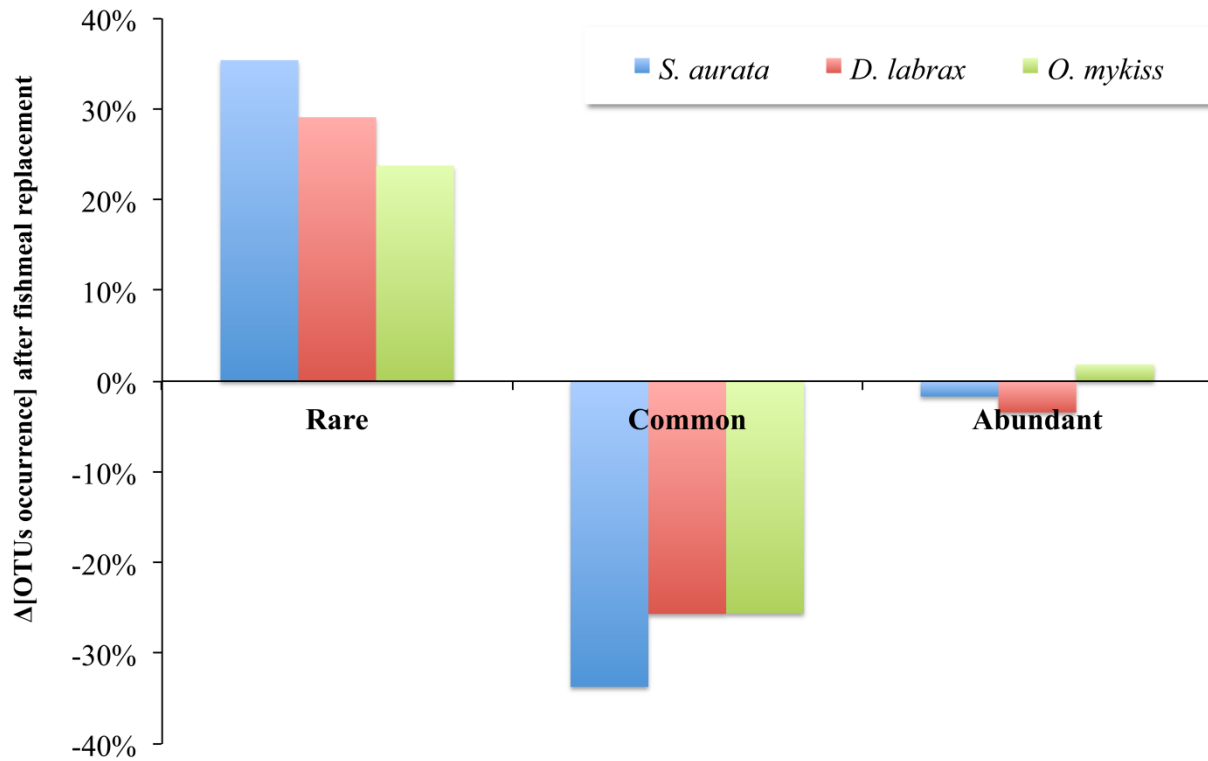


Figure S2. Cluster analysis of the operational taxonomic units relative abundance in midgut individual samples of *Sparus aurata*, *Dicentrarchus labrax* and *Oncorhynchus mykiss* after a dietary inclusion of 50% or 60% of *Tenebrio molitor* larvae meal (TM).. a, b, c: replicates.