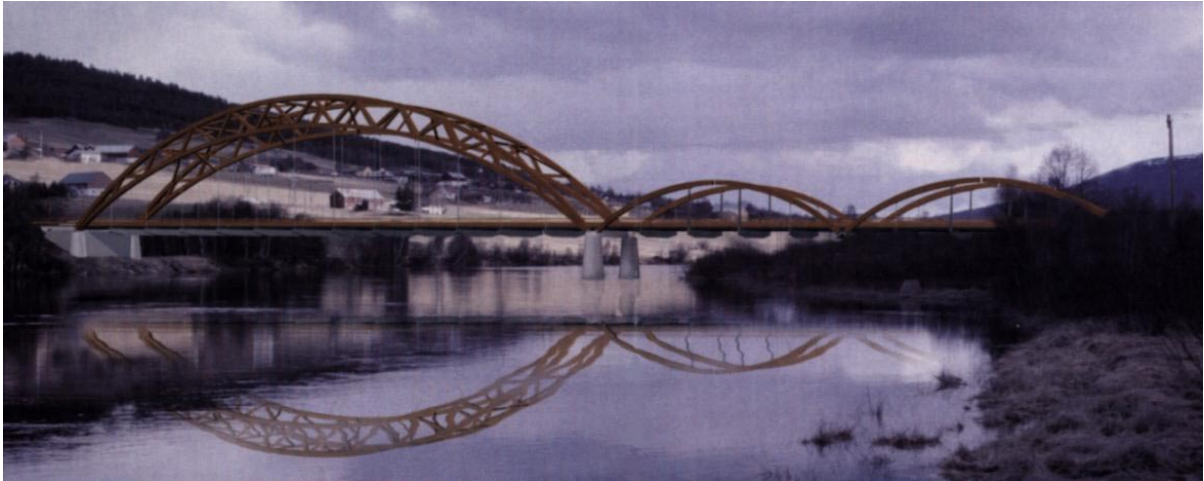
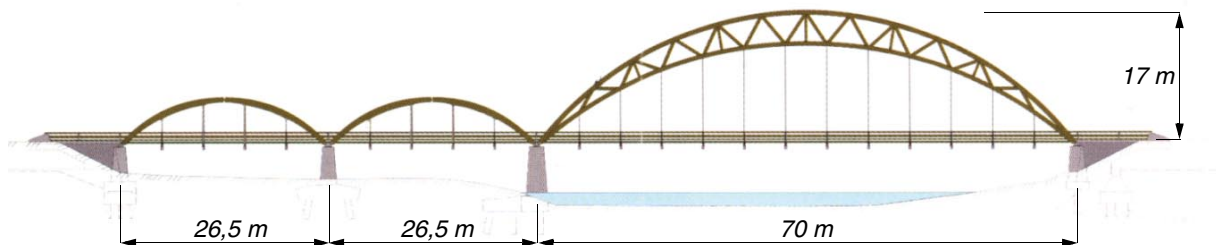


# Tynset Bridge

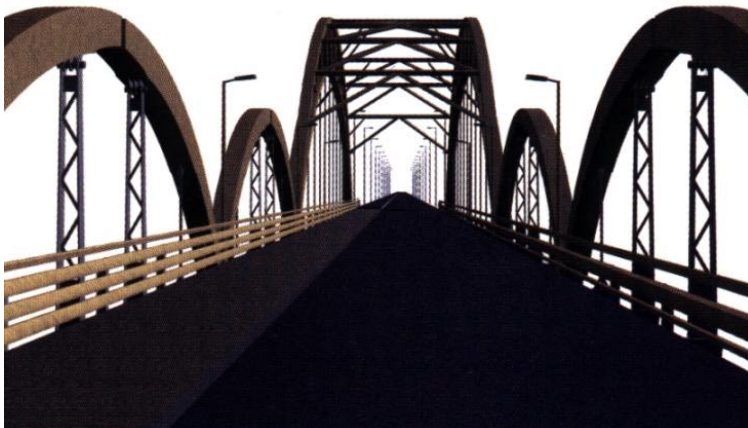
Timber bridge to be opened in June 2001. Main span of 70 m, and two equal side spans of 26,5 m. Two lanes for ordinary road traffic and one lane for cycle and pedestrian traffic.



Artist's impression



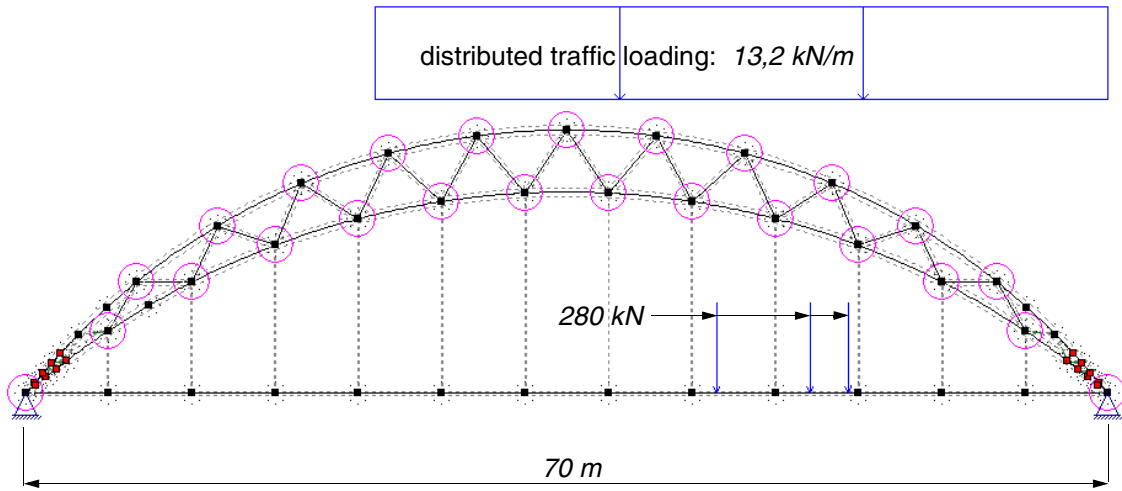
Creosote impregnated glulam arches and stress laminated deck of creosote impregnated planks



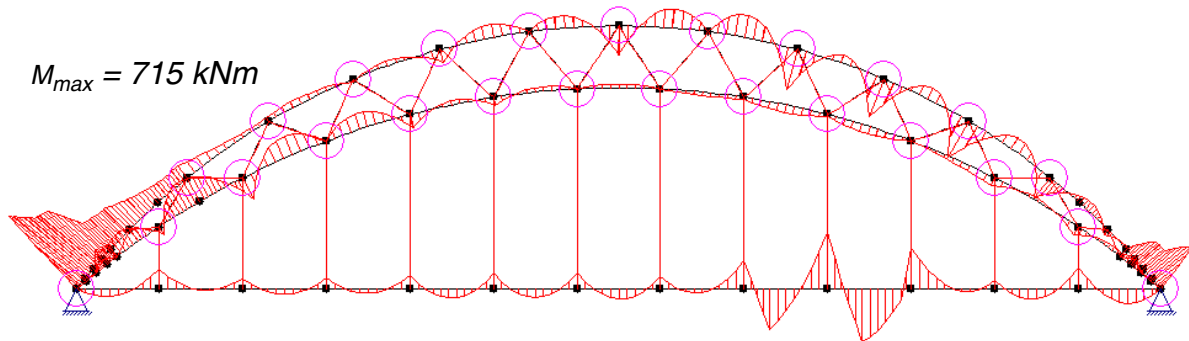
**Owner:** Public Roads Administration, Hedemark  
**Designer:** Norconsult AS  
**Architects:** Plan Arkitekter AS

## The truss arch

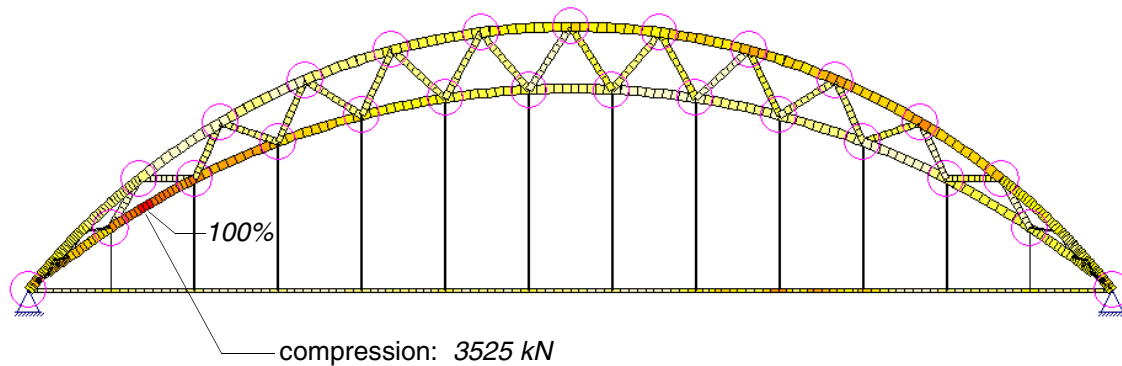
### Computational model (plane frame by Focus Konstruksjon)



### Bending moments



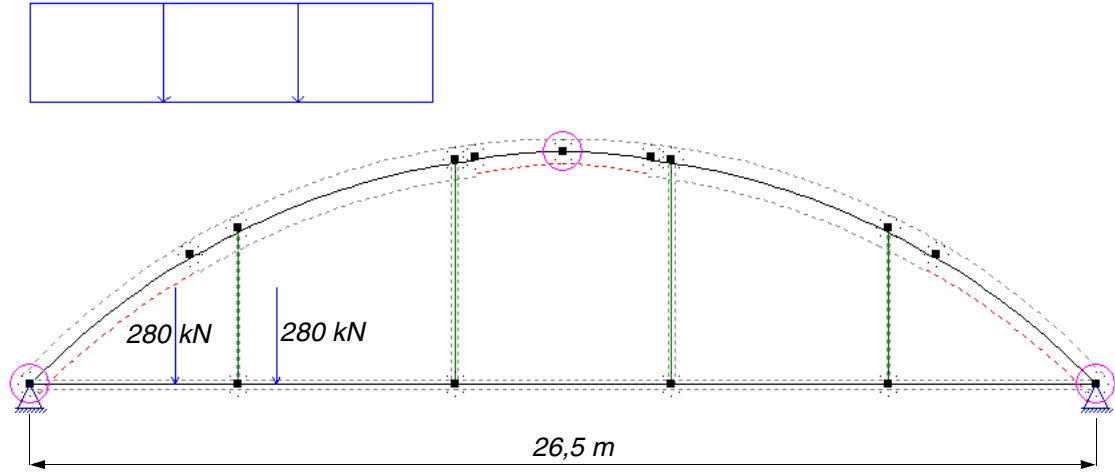
### Capacity (combined bending and axial force)



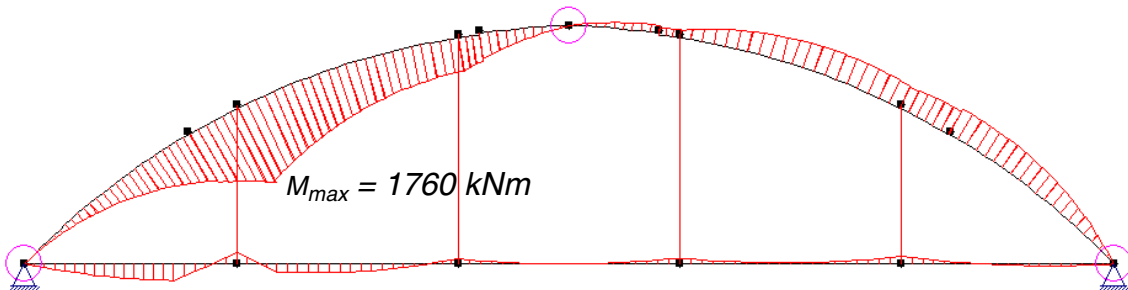
## The massive arch

### Computational model (plane frame by Focus Konstruksjon)

distributed traffic loading:  $13,2 \text{ kN/m}$



### Bending moments



### Capacity (combined bending and axial force)

