

Sudoku Difficult No 14,985

9			8				4	3
		6		1	5			
	1			3		7	9	
4	7		2					
	8			7		1	6	
		4		8	3			
8			4				1	5

Fiendish No 14,986

	2				3			1
		6				9	3	
9	5				6			2
				1		8		
				5	9			
				3		7		
8	1				5			7
		5				3	4	
	9				7			5

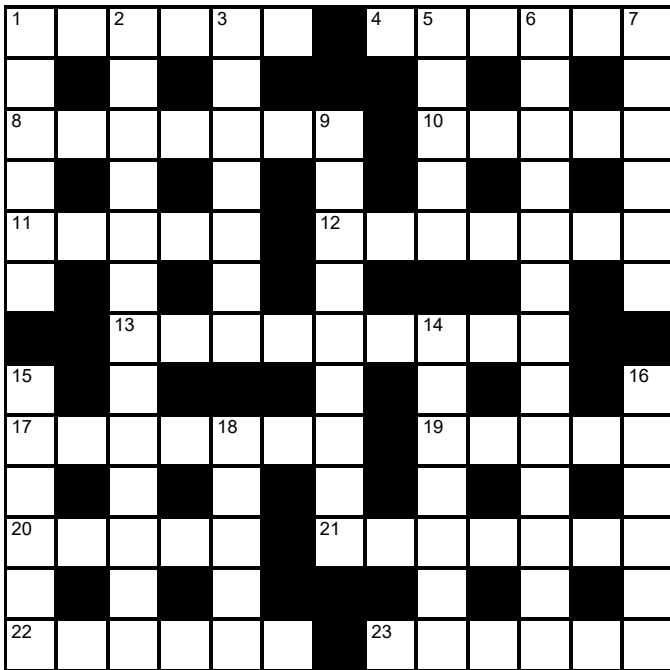
Super fiendish No 14,987

				3				
	6				1			
9	2	5	6		4			
		6		7		8	1	
	4				8			9
						5		
6		2			3	4		
1				2		9	6	
	3	7				1		

© PUZZLER MEDIA

Cluelines Stuck on Sudoku, Killer or KenKen? Call 0901 293 6263 before midnight to receive four clues for any of today's puzzles. Calls cost £1 plus your telephone company's network access charge. SP: Spoke, 0333 202 3390 (Mon-Fri 9am-5.30pm).

The Times Quick Cryptic No 2700 by Pedro



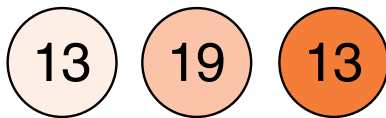
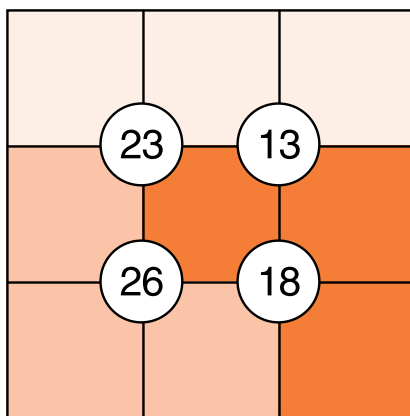
Across

- 1 Newspaper feature in support of statuary? (6)
- 4 Region in South Africa — or region of ancient Greece (6)
- 8 Flashy military pilots getting suspicious cut (7)
- 10 Protection US soldier provided in the main, after retreating (5)
- 11 That fellow in pub backed treatment for alcoholism? (5)
- 12 Current measuring device encountered in more than half of America (7)
- 13 Right name, possibly, for traumatic experience (9)
- 17 Stick seen behind a little creature in stream? (7)
- 19 Item of music, quiet, on the radio (5)
- 20 Cheese — French, originally — in legal case (5)
- 21 Left-winger taken aback about blokes in distress (7)
- 22 Still likely to be gutted on a regular basis (6)
- 23 Small toboggan circling start of deep mud (6)

Down

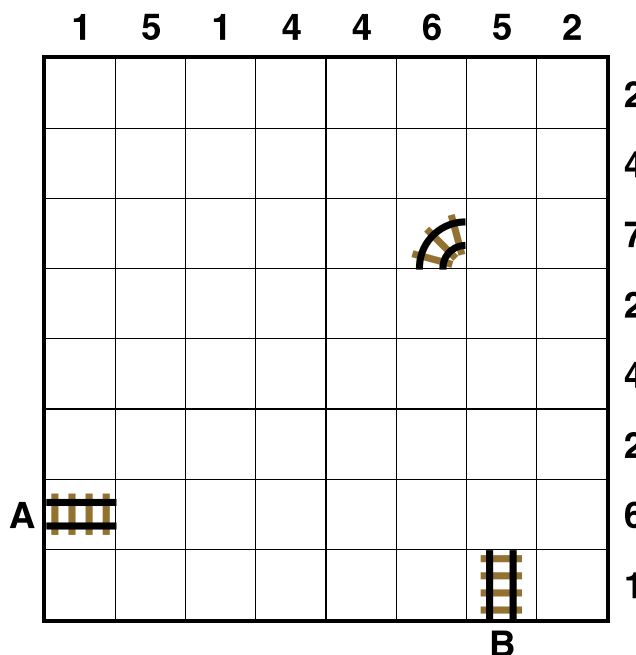
- 1 Copper not common in poison (6)
- 2 Socialist Worker sales campaign? Car from abroad appears? (4-4,5)
- 3 Bloke picked up claim to find a lot of correspondence (7)
- 5 Item from Biblical book son held in part of hand (5)
- 6 Title for bishop, just left-wing, never confused internally (5,8)
- 7 Claim a strand of hair twisted up (6)
- 9 Sign of life and courage on patrol (9)
- 14 Computer program modified real clothing (7)
- 15 Out-of-date about book and unlikely to change? (6)
- 16 Married? Agree to lose initial spirit (6)
- 18 Liver and kidneys, say, not available, entirely running short (5)

Suko No 4140



Place the numbers 1 to 9 in the spaces so that the number in each circle is equal to the sum of the four surrounding spaces, and each colour total is correct

Train Tracks No 2267



Lay tracks to enable the train to travel from village A to village B. The numbers indicate how many sections of track go in each row and column. There are only straight sections and curved sections. The track cannot cross itself.

Word watch David Parfitt

Trichotillomania

- a An illness affecting finches
- b A compulsion to pull out one's hair
- c An obsession with the number 13

Garagiste

- a A supporter of state intervention
- b A hot-air balloon pilot
- c A small-scale winemaker

Bursiculate

- a Resembling a small pouch
- b To pay out wages
- c (Of pods) to pop and scatter seed

Poker Byron Jacobs

Feeling good

A great feeling in poker (in fact it often seems as though this is the only reason some people play the game) is to catch an opponent bluffing. Villain makes a sizeable bet on the river. You don't have much but call anyway. They table their bluff and you show down your mediocre (but winning) hand. What a brilliant call! You bask in the glory of your bluff catch. Everyone at the table is in awe of the way you looked into Villain's soul and owned them. Your reward is not only a bunch of chips but the mother of all dopamine hits.

Of course, in the real world no one is paying much attention and admiration for your stellar play is mostly in your head. Nevertheless, it does feel good. And it is undoubtedly the case that the ability to pick off bluffs is a useful poker skill. So, how can you do this? How can you judge when Villain is trying it on and when they actually have the goods?

In a low-level game you will not go far wrong if you just fold every time an opponent makes a sizeable river bet. The expression for what players in a particular game tend to do in specific situations is known as the *population tendency*. The population tendency in low-level play is to rarely bluff. When these players show strength they generally have it. So, if you are going to bluff catch in this environment you need a very good reason for doing so.

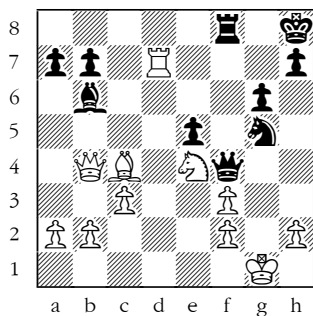
The problem with never or rarely bluffing is that you become predictable. Your play is "unbalanced" because a strong bet invariably means a strong hand. As players improve, they realise this and so introduce more bluffs into their game to become balanced. Now you need some actual strategies to pick off their bluffs. Some tips.

Are there missed draws Villain can hold? The flop is A♣-9♦-6♠; you have A♥-10♥. Villain bets all three streets and by the river the board is A♣-9♦-6♠-K♥-2♥. There were hardly any drawing possibilities on the flop and turn so Villain's range is probably heavy with A-K, A-Q, A-J. Be inclined to fold. J♠-10♦-7♠-6♦-4♥ tells a different story. There are numerous missed draws so a hand such as K-J is more justified in calling.

Did Villain make the river bet suspiciously quickly? A bluff is now plausible. With a very strong (likely winning) hand you want to bet big enough to win a decent number of chips but small enough to induce a call. This balancing act requires thought. If you have a busted hand the only way to win is to shove some chips into the pot as a bluff - a far less complex decision, as well as one being more prone to a "rush of blood".

Finally, does Villain look relaxed or stiff and awkward? A player who is a huge favourite to win the pot is usually chilled out. A bluffer, on the other hand, is nervous. Even for an experienced campaigner, this is hard to fake.

Winning Move



White to play.
This position is from Nagy - Szalay-Ocsak, Budapest 2024.

Although his king is a little insecure, the black position looks promising. There is tremendous pressure along the f-file and after 1 Nxf5 (which seems forced) 1... Qxg5+ 2 Kf1 Rxf3 Black stands well. However, White found an ingenious way to alter the dynamics of the position in his favour. Can you see what he played?

Codeword No 5239

4	21	7	7	15	1	2		16	2	1	1	15	
6		1		19		26		15		3		21	
15	1	9	26	12		16	2	26	3	19	1	22	
26		26		16		26		25		17		1	
7	21	8	16	10	17	16	5		26	12	13	11	
25				1		26		8		26			
13	1	15	15	26	24		6	2	21	11	17	4	
		17		12		23		21				24	
7	19	22	13		9	26	19	U	S	4	21	5	21
1		19		14		4		4		15		25	
6	1	2	18	1	16	22		17	7	17	26	9	
26		25		4		15		16		8		21	
22	2	13	4	22		1	20	21	4	17	26	12	

A B C D E F G H I J K L M N O P Q R S T U V W X Y Z

1	2	3	4	S	5	6	7	8	9	10	11	12	13	
14	15	16	17		18	19	U	20	21	22	23	24	25	26

Every letter in this crossword-style grid is represented by a number from 1 to 26. Each letter of the alphabet appears in the grid at least once. Use the letters already provided to work out the identity of further letters. Enter letters in the main grid and the smaller reference grid until all 26 letters of the alphabet have been accounted for. Proper nouns are excluded.

Cluelines Stuck on Codeword? To receive 4 random clues call 0901 293 6262 or text TIMECODE to 64343. Calls cost £1 plus your telephone company's network access charge. Texts cost £1 plus your standard network charge. For the full solution call 0905 757 0142. Calls cost £1 per minute plus your telephone company's network access charge. SP: Spoke, 0333 202 3390 (Mon-Fri, 9am-5.30pm).

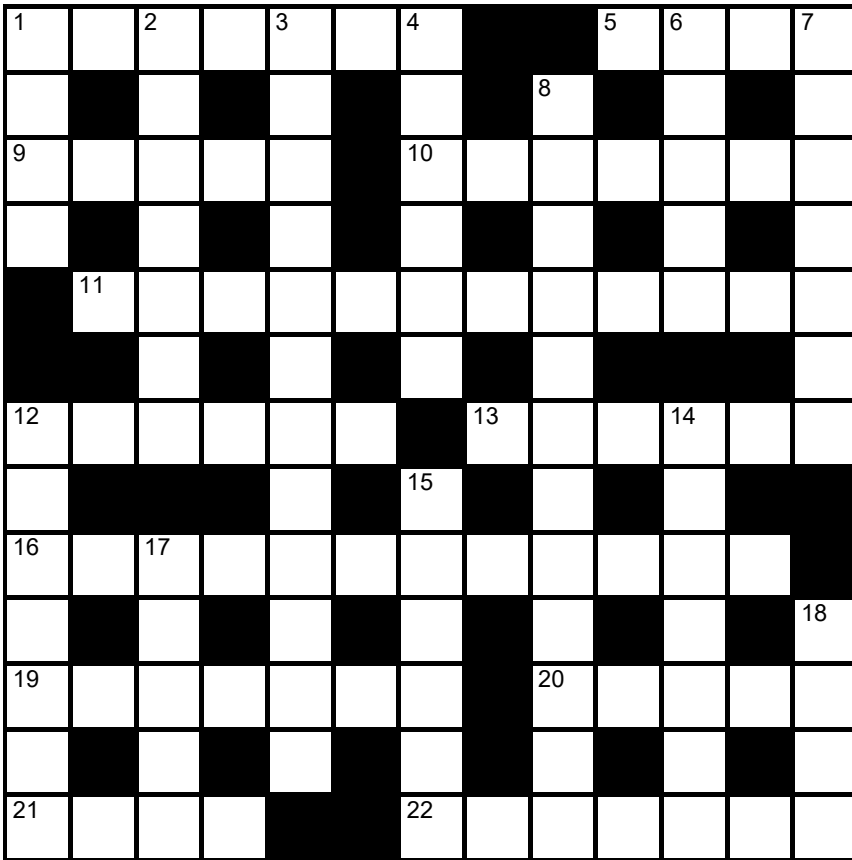
Lexica Easy No 7467

Hard No 7468

...	R	●	I	I	N	L	...	A	C	M	C	S	E	...
A								B	A					C
...							
A								N	K					●
...							
I								●	D					I
...							
L								T	A					D
...							
●								...	H	I				L
...							
M								T	K					E
...							
...	G	U	K	A	I	G	E	A	I	S	Y	T

Slide the letters either horizontally or vertically back into the grid to produce a completed crossword. Letters are allowed to slide over other letters

times2 Crossword No 9555



Across

- 1 Riotous celebration (7)
- 5 Protective crust over a healing wound (4)
- 9 Wonderful, fantastic (5)
- 10 Burnt ceremonial substance (7)
- 11 Thoughts of how matters may or should turn out (12)
- 12 Universe (6)

- 13 Rubbed painfully (6)
- 16 Scholarly thinkers (12)
- 19 Generous in amount (7)
- 20 Core of a peach or plum, eg (5)
- 21 Neat, orderly (4)
- 22 Excursion not requiring an overnight stay (3,4)

Down

- 1 Ancient Icelandic tale (4)
- 2 Mountaineering tools (3,4)
- 3 Perform some kind of social custom (2,3,7)
- 4 Responsible for a crime (6)
- 6 Brazzaville's country (5)
- 7 Consecrated (7)
- 8 Spirit made with barley (6,6)
- 12 Relief aviator (2-5)
- 14 Passionate feeling, zeal (7)
- 15 Mode of dismissal in cricket (6)
- 17 Bearing nascent flowers (2,3)
- 18 Fibre used to make rope (4)

Solution to Crossword 9554

M	O	D	I	C	U	M	L	E	T	U	P	
A	R	O	O	U	E	L						
S	W	I	S	S	R	E	S	E	R	V	E	
T	F	M	T	T	M	A						
I	N	T	R	E	P	I	D	M	I	N	D	
F	T	F	F	N								
F	O	R	T	I	F	I	C	A	T	I	O	N
E	C	C	C	O								
F	I	V	E	M	A	T	T	R	E	S	S	
I	I	W	T	O	X	E						
R	O	S	S	I	N	I	T	H	U	M	B	
T	I	S	O	U	L	A						
H	A	T	C	H	N	A	M	E	T	A	G	

Need help with today's puzzle? Call 0905 757 0143 to check the answers. Calls cost £1 per minute plus your telephone company's network access charge. SP: Spoke, 0333 202 3390 (Mon-Fri 9am-5.30pm).

KenKen Medium No 6231

36×			60×		12+
1-		13+			
90×	3÷				
		3	2÷		13+
	3-	2÷	1-		
				5-	

All the digits 1 to 6 must appear in every row and column. In each thick-line "block", the target number in the top left-hand corner is calculated from the digits in all the cells in the block, using the operation indicated by the symbol.

© 2010 KENKEN PUZZLE & TIM MEXTOY, DIST. BY UFS, INC. WWW.KENKEN.COM

Futoshiki No 4779

<input type="text"/>	<input type="text"/>	<input type="text"/>	2 >	<input type="text"/>
∨			∨	
<input type="text"/>	>	<input type="text"/>	<input type="text"/>	2
<input type="text"/>	<input type="text"/>	<input type="text"/>	<input type="text"/>	<input type="text"/>
	∧		∧	
<input type="text"/>	<input type="text"/>	<input type="text"/>	<input type="text"/>	<input type="text"/>
<input type="text"/>	<input type="text"/>	<input type="text"/>	<input type="text"/>	<
<input type="text"/>	<input type="text"/>	<input type="text"/>	<input type="text"/>	<input type="text"/>

Fill the blank squares so that every row and column contains each of the numbers 1 to 5 once only. The symbols between the squares indicate whether a number is larger (>) or smaller (<) than the number next to it.

Kakuro No 3738

	6	24	8		28	17		26	7	6
11				16			15			
23				9			7			
4			3			16				
	34		3			36			34	4
6				14			3			
16			14	4	11		19			
		38					15			
24	24	23								7
					3			4		
24					16			7	4	
15				24						
23				9			19			

Fill the grid using the numbers 1 to 9 only. The numbers in each horizontal or vertical run of white squares add up to the total in the triangle to its left or above it. The same number may occur more than once in a row or column, but not within the same run of white squares.

© PUZZLER MEDIA

Quintagram®

Solve all five cryptic clues using each letter underneath once only

1 Good cut of meat for one habitually having beef (5)

— — — — —

2 Badger bishop given seaside treat (5)

— — — — —

3 Setter up for nude modelling? (7)

— — — — —

4 Anger in local bringing assault? (7)

— — — — —

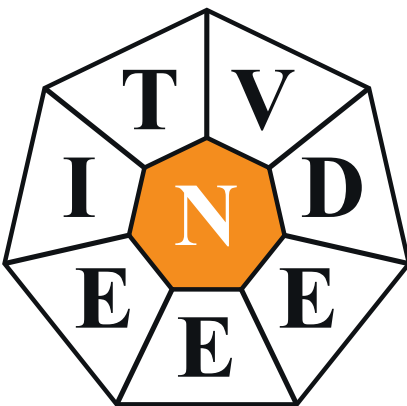
5 Idiot made hate fashionable? (8)

—	—	—	—	—	—	—	—
A	A	A	A	B	B	C	D
D	E	E	E	E	F	G	G
H	K	M	M	N	O	O	P
R	R	R	R	R	T	U	U

Brain Trainer

EASY	90	÷ 5	+ 7	÷ 5	x 3	+ 19	1/2 OF IT	- 5	x 4	+ 15	ANSWER	
MEDIUM	27	SQUARE IT	x 2	- 68	50% OF IT	- 32	2/3 OF IT	+ 84	1/2 OF IT	x 4	ANSWER	
HARDER	381	+ 2/3 OF IT	x 9	7/15 OF IT	+ 2/3 OF IT	x 2	- 355	4/5 OF IT	- 428	70% OF IT	ANSWER	

Polygon



From these letters, make words of **four** or more letters, always including the central letter. Answers must be in the *Concise Oxford Dictionary*, excluding capitalised words, plurals, conjugated verbs (past tense etc), adverbs ending in LY, comparatives and superlatives. **How you rate** 11 words, average; 15, good; 22, very good; 29, excellent

Yesterday's answers

fir, firm, for, form, fort, forty, frit, fro, from, fry, miry, mort, **mortify**, orf, rift, rim, rimy, riot, rot, roti, ryot, tiro, tor, trim, trio, troy, try, tyro

Cell Blocks No 5122

3			4	2
	2			2
	2			
	8	4		3
			10	
	2			2
			5	

Divide the grid into square or rectangular blocks, each containing one digit only. Every block must contain the number of cells indicated by the digit inside it.

Set Square No 3741

	x	-		= 13
+	■	+	■	+
9	x	+	5	= 14
-	■	÷	■	-
	+	x		= 36
=		=	=	
14		1		7

Enter each of the numbers from 1 to 9 in the grid, so that the six sums work. We've placed two numbers to get you started. Each sum should be calculated left to right or top to bottom.

Please note, BODMAS does not apply

Killer Tricky No 9516

13	19	23			9		14	
		7	12			14	15	
				9	21		8	
19								
22					22		9	22
8	20							
	18		23			22		
				7				13
26					10			

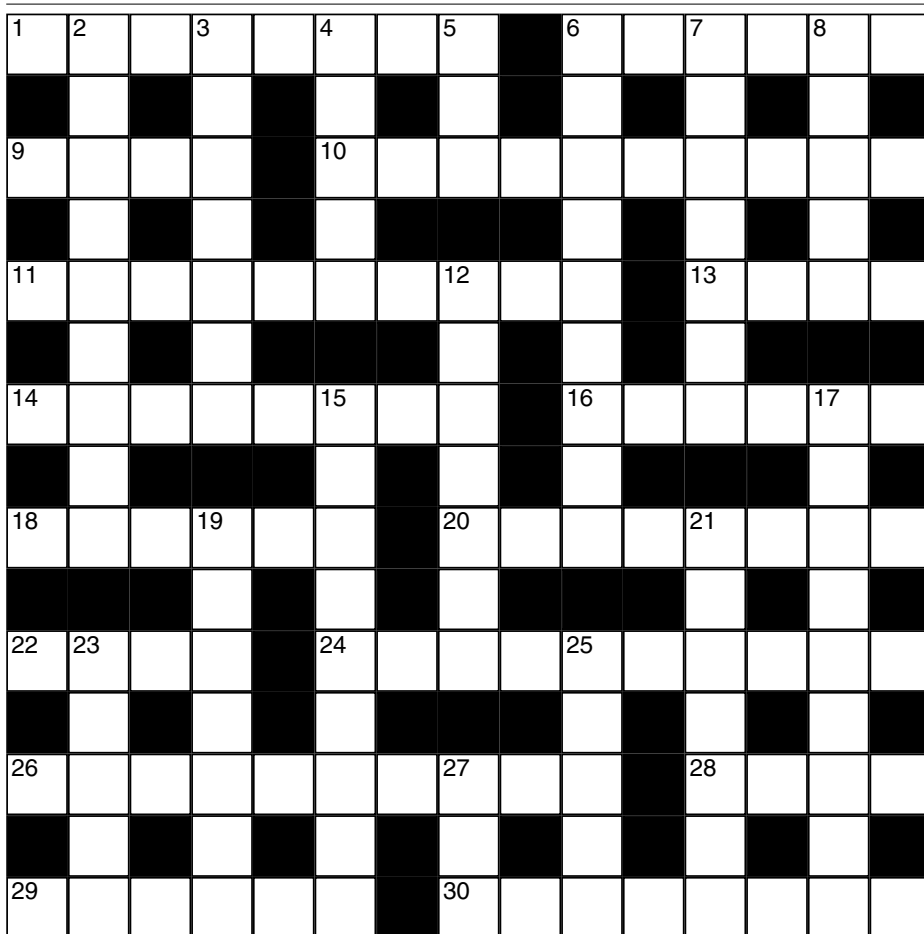
Killer Deadly No 9517

21				27			12	
11		14		21			14	
26								
	19			23	27			
		10	23				11	
5	28			11			12	
					18		7	
		21						15
			7		22			

As with standard Sudoku, fill the grid so that every column, every row and every 3x3 box contains the digits 1 to 9. Each set of cells joined by dotted lines must add up to the target number in its top-left corner. Within each set of cells joined by dotted lines, a digit cannot be repeated.

Cluelines Stuck on Sudoku, Killer or KenKen? Call 0901 293 6263 before midnight to receive four clues for any of today's puzzles. Calls cost £1 plus your telephone company's network access charge. SP: Spoke, 0333 202 3390 (Mon-Fri 9am-5.30pm).

Times Crossword 28,941



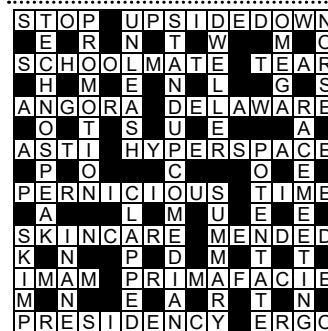
ACROSS

- 1 Enormous cut in arm (8)
- 6 Quarter of bushel on floor in imperial currency (6)
- 9 Not entirely round fruit (4)
- 10 Winding path to reed grass (4,6)
- 11 Spirit in host, pure sadness (10)
- 13 Pull on ends of short rope around well (4)
- 14 Pet like a snake, say, suitable? (5,3)
- 16 Reckon caught in it, one's hooked (6)
- 18 Name of consecutive characters leading India (6)
- 20 Remedy temper quaffing a load of ale (4,4)
- 22 Bird inedible, did you say? (4)
- 24 Little short is featuring new actor (4,6)
- 26 He's forming new gutter, sometimes? (10)
- 28 I love and I appreciate that Greek character (4)
- 29 Physicist with deal for the lecturer? (6)
- 30 English author, really empty, leaves say? (8)

DOWN

- 2 Awful cheat, vile type (9)
- 3 Reach politician while visiting island (7)
- 4 A little plain, dictionary description of language (5)
- 5 Horse has half gone – whoa! (3)
- 6 Where brothers famously given lift, a couple of predators (5,4)
- 7 Glandular decay in professional (7)
- 8 Funny attempt (5)
- 12 Judges etc and boy leading an empire (7)
- 15 Pirate getting bit of a shock maybe finding gun (9)
- 17 Ludicrous rhetoric around opening of serenade for singer (9)
- 19 Free pin and hold the main clicker? (7)
- 21 The Lord has inspired king, in embracing a Roman emperor (7)
- 23 Window that is in airport, unclosed (5)
- 25 Form hole, digger ultimately going in (5)
- 27 Show old vehicle (3)

Yesterday's solution 28,940



Check today's answers by ringing 0905 757 0141 by midnight. Calls cost £1 per minute plus your telephone company's network access charge. SP: Spoke 0333 202 3390.

Solutions

Quick Cryptic 2699

T	S	A	R	I	N	A	L	L	
H	B	O	B	R	O	G	U	E	S
E	L	E	C	T	O	R	N	T	O
L	T	A	O	L	D	B	E	A	N
A	U	T	O	A	O				G
N	I								
D	N	N							
O	R	G	A	N	I	S	E	R	M
F	O	O							
N	O	T	I	C	E	D	B	O	A
O	O	E							
D	E	F	E	N	C	E	A	I	C
F	T	N	A	R	R	A	T	E	

Codeword 5238

K	I	T	T		B	A	N	J	O
F	N	A	T	L	U	C			
L	A	C	T	H	U	M	B	M	O
A	U								
M	I	S	S		R	U	B	P	O
B									
O	R	X	V	L	P	O	G	O	
Y									
A	R	C	H	L	A	Y	L	A	Z
N	L								
C	O	O							
E	W	A	D	N	O	Y			
S	N	I	D	E	Q	U	O	T	E

Kakuro 3737

6	8	2		9	5	8	7		
2	4	1		8	7	6	9	5	4
7	9	4	8	6				1	2
1	3		4	2	1	7		3	1
	7	9		1	3	9	2		
		8	3	7	9		1	3	
1	2		1	3	8	9		2	1
3	1				6	7	1	9	8
6	4	8	9	7	5		4	7	9
		6	8	9	7		2	1	3

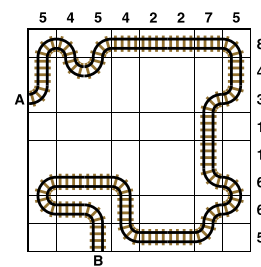
Sudoku 14,982

7	6	5	3	1	8	4	2	9
2	8	4	6	9	7	3	5	1
9	1	3	4	5	2	6	8	7
1	7	2	9	4	6	5	3	8
6	5	8	2	7	3	1	9	4
3	4	9	5	8	1	2	7	6
5	2	1	7	6	9	8	4	3
8	3	7	1	2	4	9	6	5
4	9	6	8	3	5	7	1	2

Tetonor 473

63	120	24	247
5 + 58	8 x 15	6 + 18	19 x 13
180	26	300	23
9 x 20	14 + 12	15 x 20	8 + 15
29	290	35	168
9 + 20	5 x 58	20 + 15	12 x 14
198	32	108	39
6 x 33	13 + 19	6 x 18	33 + 6

Train Tracks 2266



Sudoku 14,983

8	6	1	5	2	3	9	4	7
5	9	7	4	1	8	6	3	2
2	4	3	6	9	7	5	8	1
3	5	8	9	7	6	1	2	4
7	2	6	1	3	4	8	5	9
9	1	4	2	8	5	3	7	6
6	3	2	8	4	9	7	1	5
4	7	5	3	6	1	2	9	8
1	8	9	7	5	2	4	6	3

Cell Blocks 5121

	4				
2	12			4	
3		2	2		
	3			3	
2	4			2	
	3			3	

Set Square 3740

1	x	2	x	3
+		x		x
7	+	5	-	8
-		x		+
6	x	9	-	4

Lexica 7465

S	P	H	E	R	E
I		I		I	
G	O	D		M	
H		I			
	K	N	O	W	
		G			

Sudoku 14,984

2	5	3	8	6	1	9	7	4
1	4	9	3	5	7	6	2	8
7	8	6	2	4	9	3	5	1
6	9	2	7	8	3	1	4	5
5	3	7	6	1	4	8	9	2
8	1	4	5	9	2	7	3	6
4	6	5	9	3	8	2	1	7
3	2	8	1	7	5	4	6	9
9	7	1	4	2	6	5	8	3

Futoshiki 4778

4	3	1	5	>	2	
5	>	2	3	1	4	
1	4	2	3	5		
3	5	4	>	2	>	1
2	1	5	>	4	>	3

KenKen 6230

2	3	4	6	1	5
5	2	6	1	4	3
1	6	3	5	2	4
6	4	2	3	5	1
3	5	1	4	6	2
4	1	5	2	3	6

Lexica 7466

		B	I	N	
B	A	D			O
U			F		S
N	A	T	U	R	E
C			E		
H	A	U	L		

Today's solutions

Killer 9514

5	3	4	9	8	6	1	7	2
6	7	2	5	1	4	3	9	8
1	9	8	7	2	3	5	4	6
2	5	7	8	4	9	6	3	1
4	8	6	1	3	2	9	5	7
3	1	9	6	5	7	2	8	4
8	2	3	4	6	5	7	1	9
7	4	5	2	9	1	8	6	3
9	6	1	3	7	8	4	2	5

Killer 9515

4	3	1	7	5	9	6	2	8
9	5	2	8	4	6	7	3	1
8	6	7	2	1	3	4	5	9
3	1	8	9	7	4	5	6	2
2	4	9	1	6	5	8	7	3
5	7	6	3	2	8	1	9	4
7	8	4	6	3	2	9	1	5
1	9	3	5	8	7	2	4	6
6	2	5	4	9	1	3	8	7

Cryptic Quintagram

- 1 Grump
- 2 Brock
- 3 Founder
- 4 Barrage
- 5 Meathead

Suko 4140

9	1	3
6	7	2
8	5	4

Brain Trainer

- Easy 63
- Medium 1,052
- Harder 4,480

Word watch

Trichotillomania (b) A compulsion to pull out one's hair (*OED*)

Garagiste (c) A small-scale winemaker (*Collins*)

Bursiculate (a) Resembling a small pouch (*Chambers*)

Chess – Winning Move

After 1 Qxf8+! Qxf8 2 Nxf5 the black queen is no match for the rampant white pieces.

There is no decent reply to the mate threat on h7 as 2... Qh6 allows 3 Nf7+. Black made a last ditch attempt with 2...

Bxf2+ hoping for 3 Kxf2 Qc5+ when Black is fine but after 3 Kg2 Black was completely lost

Sudoku easy

5					3
	6				2
	7	3	9		
3	8		2	1	
	9				4
	4	8	6	3	
	1		7		5
7					8
	9	2		2	3
			7	1	

Killer gentle

Fill the grid so that every column, every row and every 3x3 box contains the digits 1 to 9. Each set of cells joined by dotted lines must add up to the target number in its top-left corner. Within each set of cells joined by dotted lines, a digit cannot be repeated.

13		8		21			3	
8	17		11		10			13
	7	6	8	11		22		
				15			17	7
19				5	9			
15	6	13	23		6		12	
				14		18	7	
	7							15
11		13			15			

Suko

18	17	
22	17	

23	7	15
----	---	----

Place the numbers 1 to 9 in the spaces so that the number in each circle is equal to the sum of the four surrounding spaces, and each colour total is correct

Codeword

Every letter in the crossword-style grid, right, is represented by a number from 1 to 26. Each letter of the alphabet appears in the grid at least once. Use the letters already provided to work out the identity of further letters. Enter letters in the main grid and the smaller reference grid until all 26 letters of the alphabet have been accounted for. Proper nouns are excluded.

	23	9	3	B	24	23	17	6		10	15	10	23
10		26				19		24		10			9
3	23	5	21	26	5	9		20	24	I	16	6	9
2		10		5		20		9		25		25	
21	10	12	21	10		17	5	4	9	22	13		
18				22		2		13		10		17	
10	23	17	9	23	2		8	23	13	19	17	6	
12		5		10		3		10				9	
	3	23	13	20	1	9		3	10	12	21	10	
5		18		8		12		12		24		17	
21	7	13	13	12		11	12	2	13	14	9	23	
9		24		9		23				24		9	
22	5	12	12		16	2	10	20	24	22	9		

A B C D E F G H I J K L M N O P Q R S T U V W X Y Z

1	2	3	B	4	5	6	7	8	9	10	11	12	13
14	15	16	17	18	19	20	21	22	D	23	I	24	25

Mini Sudoku

Fill in the grid so that every column, every row and every 3x2 box contains the digits 1 to 6

		2			5
				6	1
5					
				5	2
	5		1		
1	4		5		

Solutions in tomorrow's Times2

THE  TIMES

MindGames Wednesday June 12 2024
Brain boost puzzles

Yesterday's solutions

SAMURAI

3	1	9	5	6	4	2	7	8				5	6	8	2	3	4	7	1	9
2	7	4	8	3	9	1	5	6				2	9	3	1	8	7	6	4	5
8	6	5	1	7	2	3	9	4				4	1	7	5	9	6	8	2	3
9	8	1	4	5	3	7	6	2				8	5	2	6	7	3	1	9	4
5	2	3	6	1	7	4	8	9				1	7	6	4	5	9	2	3	8
7	4	6	9	2	8	5	3	1				9	3	4	8	1	2	5	7	6
1	3	8	2	9	5	6	4	7	1	2	5	3	8	9	7	6	1	4	5	2
4	5	2	7	8	6	9	1	3	6	8	4	7	2	5	3	4	8	9	6	1
6	9	7	3	4	1	8	2	5	7	3	9	6	4	1	9	2	5	3	8	7
						2	9	8	4	1	6	5	3	7						
						5	3	1	8	9	7	2	6	4						
						4	7	6	3	5	2	1	9	8						
2	4	5	8	1	7	3	6	9	5	4	1	8	7	2	5	4	1	6	3	9
1	9	8	3	2	6	7	5	4	2	6	8	9	1	3	2	7	6	8	4	5
7	3	6	4	9	5	1	8	2	9	7	3	4	5	6	8	9	3	2	1	7
5	6	3	7	4	1	9	2	8				7	8	4	3	6	2	5	9	1
9	2	7	5	6	8	4	3	1				5	2	9	1	8	7	4	6	3
4	8	1	9	3	2	6	7	5				3	6	1	9	5	4	7	8	2
6	7	4	2	5	9	8	1	3				6	4	5	7	3	9	1	2	8
8	5	9	1	7	3	2	4	6				2	3	7	6	1	8	9	5	4
3	1	2	6	8	4	5	9	7				1	9	8	4	2	5	3	7	6

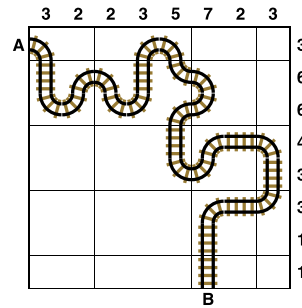
SUKO

6	4	8
5	1	7
3	9	2

MINI SUDOKU

3	6	5	2	1	4
4	1	2	5	6	3
6	2	4	3	5	1
1	5	3	6	4	2
2	4	6	1	3	5
5	3	1	4	2	6

TRAIN TRACKS



FUTOSHIKI

1	3	<	4	<	5	2
		∨				
4	1	5	2	3		
					^	^
2	5	1	3	4		
					^	
5	2	3	4	1		
3	<	4	2	1	5	

SUDOKU

9	3	5	7	2	1	6	8	4
1	2	7	8	4	6	3	5	9
4	6	8	3	5	9	2	1	7
5	9	4	6	1	8	7	3	2
3	8	6	2	7	5	4	9	1
2	7	1	4	9	3	5	6	8
7	1	9	5	6	4	8	2	3
8	5	2	9	3	7	1	4	6
6	4	3	1	8	2	9	7	5

KILLER

5	9	6	3	2	4	7	8	1
7	8	4	5	9	1	2	6	3
1	3	2	6	8	7	5	4	9
2	5	1	9	4	3	8	7	6
8	7	9	2	1	6	3	5	4
6	4	3	8	7	5	1	9	2
3	6	8	1	5	9	4	2	7
9	2	7	4	3	8	6	1	5
4	1	5	7	6	2	9	3	8

CODEWORD

A	W	A	Y	H	A	N	D	B	O	O	K
C	D	C	B	I	P	E					E
Q	U	A	R	R	E	L	S	U	P	E	R
U	P	A	A	A	C	R	B				
A	P	T	L	Y	Z	O	O	M	E	D	
I				O	E		S	E			
N	O	S	I	N	G	U	N	I	S	E	X
T	U			R	U		A				
P	L	A	S	M	A	G	L	O	O	M	
V	P	E	F	G	C	I					
A	C	H	E	D	F	R	E	S	H	E	N
M	U	A	I	T	R	E					
P	A	R	E	N	T	A	L	J	E	E	R