

Sudoku Mild No 14,982

7		5			8		2	9
		3			2	6	8	
			9		6		3	8
				7				
3	4		5		1			
	2	1	7			8		
4	9		8			7		2

Difficult No 14,983 **Super fiendish No 14,984**

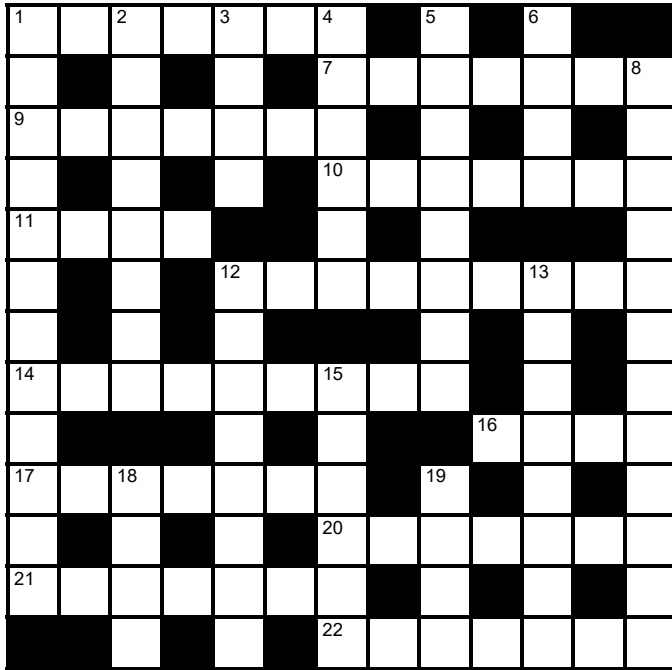
					3			7
	9					6		
			6			5	8	1
				7	6		2	
	2	6		3		8	5	
	1		2	8				
6	3	2			9			
		5					9	
1			7					

2		3		6	1		7	
		9			7	6		
		6			9			
					3			5
5				1				2
8			5					
			9			2		
		8	1			4		
	7		4	2		5		3

© PIZZLER MEDIA

Cluelines Stuck on Sudoku, Killer or KenKen? Call 0901 293 6263 before midnight to receive four clues for any of today's puzzles. Calls cost £1 plus your telephone company's network access charge. SP: Spoke, 0333 202 3390 (Mon-Fri 9am-5.30pm).

The Times Quick Cryptic No 2699 by Oink



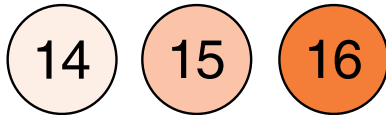
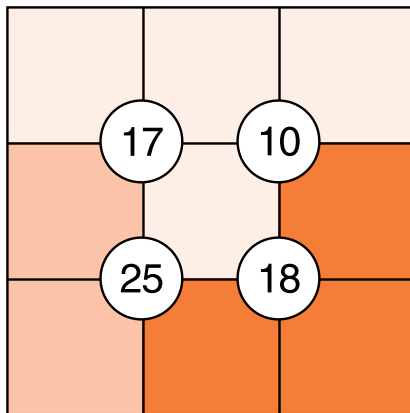
Across

- 1 A strain working for emperor's wife (7)
- 7 British scoundrel's shoes (7)
- 9 One to whom candidate must appeal? (7)
- 10 A blonde's contrived affectionate address (3,4)
- 11 Car valuation regularly neglected (4)
- 12 Individuals visiting one Asian country or another (9)
- 14 Manager mislaying old earrings (9)
- 16 Son having dessert — or a potato? (4)
- 17 Saw how some prefer their whisky? (7)
- 20 Calls round with advice to evildoer? (5,2)
- 21 Alibi of French dealer in stolen goods (7)
- 22 Hurried back to consider report (7)

Down

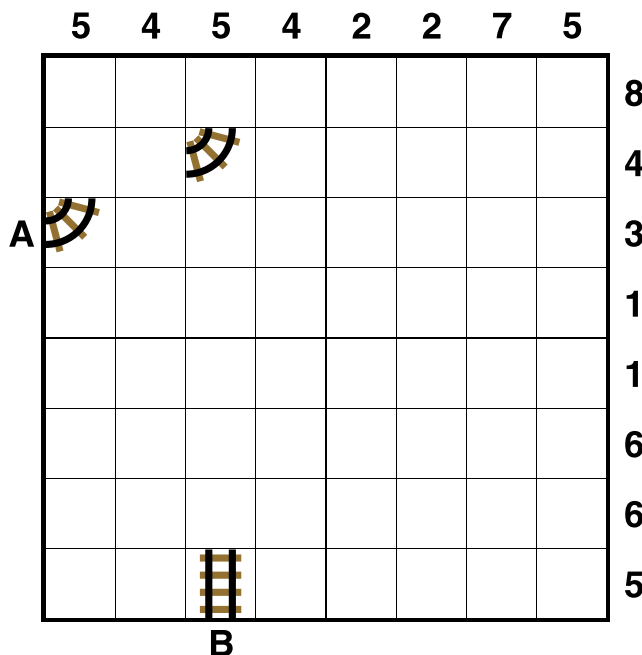
- 1 Country in which one will find kippers? (3,4,2,3)
- 2 Helping with article on gambler's activity (8)
- 3 Shred a letter to Aristotle Onassis (4)
- 4 A body of water overseas (6)
- 5 Don visiting solitary chap, a city dweller (8)
- 6 Musical instrument found in sack, did you say? (4)
- 8 Features of a musical creating a stir? (4,3,5)
- 12 Naive, as some popes were (8)
- 13 Initially Omani spy aims to disturb meetings (8)
- 15 Ground next to animal's lair very wet (6)
- 18 Posh chap having time away (4)
- 19 Bristly customer finding love in boozier (4)

Suko No 4139



Place the numbers 1 to 9 in the spaces so that the number in each circle is equal to the sum of the four surrounding spaces, and each colour total is correct

Train Tracks No 2266



Lay tracks to enable the train to travel from village A to village B. The numbers indicate how many sections of track go in each row and column. There are only straight sections and curved sections. The track cannot cross itself.

Word watch
David Parfitt

Stomatic

- a Socially accepted or prescribed
- b Pertaining to the mouth
- c Of the body rather than the mind

Spitcher

- a Done for, doomed
- b A vessel for expectoration
- c The bowler in rounders

Pharmakos

- a A long-leaved variety of lettuce
- b A scapegoat

Tetonor Easy No 473

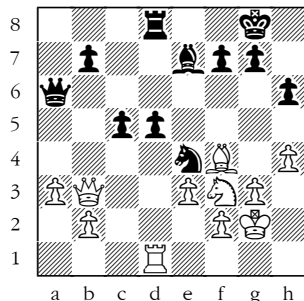
63	120	24	247
180	26	300	23
29	290	35	168
198	32	108	39

	6	6	8		12	13		15	15	18	19	20	20		
--	---	---	---	--	----	----	--	----	----	----	----	----	----	--	--

When complete, the strip below the grid can be split into eight pairs of numbers. Adding the numbers in a pair gives one of the 16 numbers in the grid. Multiplying them gives a different number in the grid. For example, a 4 and 6 in the strip could be paired to make 10 (4+6) and 24 (4x6) in the grid. Enter each sum below the corresponding number in the grid. The blanks in the strip must be deduced, bearing in mind the numbers are listed in ascending order.

The next Tetonor puzzle will appear on Thursday

Winning Move



Black to play. This position is from Kukhmazov-Shankland, Titled Tuesday, chess.com 2024.

Black's pawn duo on c5 and d5 are strong but if White can provoke one of the pawns to advance, they can swiftly become weak, eg after ... c4, a useful hole appears on d4 which can be occupied by the white knight. However, Black's next move rendered all such discussion irrelevant. What did he play?

Codeword No 5238

A B C D E F G H I J K L M N O P Q R S T U V W X Y Z

1	2	3	4	5	6	7	8	9	10	11	12	13
T												
14	15	16	17	18	19	20	21	22	23	24	25	26
							B	O				

Every letter in this crossword-style grid is represented by a number from 1 to 26. Each letter of the alphabet appears in the grid at least once. Use the letters already provided to work out the identity of further letters. Enter letters in the main grid and the smaller reference grid until all 26 letters of the alphabet have been accounted for. Proper nouns are excluded.

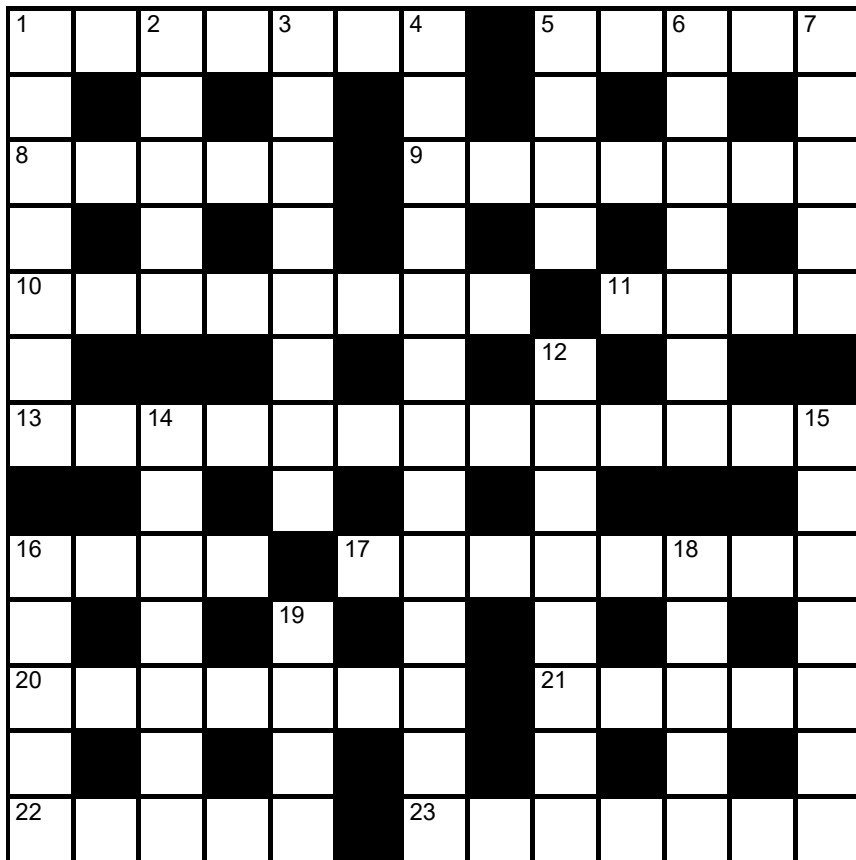
Cluelines Stuck on Codeword? To receive 4 random clues call 0901 293 6262 or text TIMECODE to 64343. Calls cost £1 plus your telephone company's network access charge. Texts cost £1 plus your standard network charge. For the full solution call 0905 757 0142. Calls cost £1 per minute plus your telephone company's network access charge. SP: Spoke, 0333 202 3390 (Mon-Fri, 9am-5.30pm).

Lexica Easy No 7465

Hard No 7466

Slide the letters either horizontally or vertically back into the grid to produce a completed crossword. Letters are allowed to slide over other letters

times2 Crossword No 9554



Across

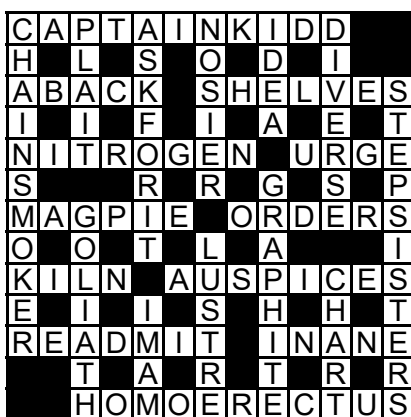
- 1 Small amount (7)
- 5 Abate, slacken (3,2)
- 8 From Berne or Geneva, eg (5)
- 9 Area set aside for nature (7)
- 10 Boldly adventurous (8)
- 11 Psyche (4)
- 13 Defensive structure (13)
- 16 Number in a quintet (4)

- 17 Large thick pad for sleeping on (8)
- 20 Italian composer of *The Barber of Seville* (7)
- 21 Pollex of the human hand (5)
- 22 Service flap (5)
- 23 Identity label (4,3)

Down

- 1 Powerful dog breed (7)
- 2 Move with the current (5)
- 3 Superficial (8)
- 4 Intense feeling of shame (13)
- 5 One of the deadly sins (4)
- 6 Railway end points (7)
- 7 Beg, implore (5)
- 12 Person employed to do all kinds of work (8)
- 14 Go to again (7)
- 15 Horse's food sack (7)
- 16 Narrow inlet of the sea (5)
- 18 Rejoice (5)
- 19 Ardent hope or aspiration (4)

Solution to Crossword 9554



Need help with today's puzzle? Call 0905 757 0143 to check the answers. Calls cost £1 per minute plus your telephone company's network access charge. SP: Spoke, 0333 202 3390 (Mon-Fri 9am-5.30pm).

KenKen Medium No 6230

144×			5-	1	12+
12+	3÷			2÷	
		5+	2-		
	1-			4-	
7+		11+			3÷
	4-		1-		

All the digits 1 to 6 must appear in every row and column. In each thick-line "block", the target number in the top left-hand corner is calculated from the digits in all the cells in the block, using the operation indicated by the symbol.

© 2010 KENKEN PUZZLE & TIM MEXTOY, DIST. BY UPS, INC. WWW.KENKEN.COM

Futoshiki No 4778

4				>	
	>				
1					^
			∇		
			>	>	
			>	>	

Fill the blank squares so that every row and column contains each of the numbers 1 to 5 once only. The symbols between the squares indicate whether a number is larger (>) or smaller (<) than the number next to it.

Kakuro No 3737

	16	31	7		36	12	14	16		
16				29					9	7
7				39						
				12						
34					39	16		3		
	4		14					4		
		16		17				3		
				4					22	
	10	7	27				4			21
3				21			16		3	
								7		
	4			14	17	16				
39								20		
			30						6	

Fill the grid using the numbers 1 to 9 only. The numbers in each horizontal or vertical run of white squares add up to the total in the triangle to its left or above it. The same number may occur more than once in a row or column, but not within the same run of white squares.

© PUZZLER MEDIA

Quintagram®

Solve all five cryptic clues using each letter underneath once only

1 Head off row that leads to large scale killing? (4)

— — — —

2 Reflecting in regret, a morose old woman (5)

— — — — —

3 Second of French sailors is up-to-date (6)

— — — — —

4 Girl cornering organiser of bouts a target for boxers? (7)

— — — — —

5 Horse-drawn vehicle with unusual cat goes by a church (10)

—	—	—	—	—	—	—	—
A	A	A	A	B	C	C	C
D	E	E	E	E	G	H	J
L	L	M	M	N	N	O	O
O	R	R	S	T	T	U	W

Brain Trainer

EASY	4	x 8	- 6	÷ 2	x 8	- 6	50% OF IT	÷ 7	+ 11	x 4	ANSWER	
MEDIUM	11	x 9	+ 23	1/2 OF IT	x 5	+ 47	x 3	- 84	75% OF IT	+ 254	ANSWER	
HARDER	178	x 2	+ 1/4 OF IT	x 3	+ 915	90% OF IT	- 561	+ 7/8 OF IT	7/9 OF IT	x 3	ANSWER	

Polygon



From these letters, make words of three or more letters, always including the central letter. Answers must be in the *Concise Oxford Dictionary*, excluding capitalised words, plurals, conjugated verbs (past tense etc), adverbs ending in LY, comparatives and superlatives. **How you rate** 13 words, average; 18, good; 23, very good; 28, excellent

Yesterday's answers

cep, chop, **chopper**, chore, cop, cope, coper, copper, cor, core, crop, echo, eco, epoch, och, oche, ochre, orc, pec, perch, porch, rec, roc

Cell Blocks No 5121

	4				
2		12			4
3			2	2	
	3				3
2	4				2
		3		3	

Divide the grid into square or rectangular blocks, each containing one digit only. Every block must contain the number of cells indicated by the digit inside it.

Set Square No 3740

	x	x	= 6
+	■	x ■	x = 4
	+ 5	-	
-	■	x ■	+ = 50
6	x	-	
= 2	= 90	= 28	

Enter each of the numbers from 1 to 9 in the grid, so that the six sums work. We've placed two numbers to get you started. Each sum should be calculated left to right or top to bottom.

Please note, BODMAS does not apply

Killer Moderate No 9514

8		6	22		10		18	
22				18	7			14
3						9		
	12		12		15		11	
27			4		24			
12			17	12		17		13
	5			21			7	
16	10							8
		4		15		6		

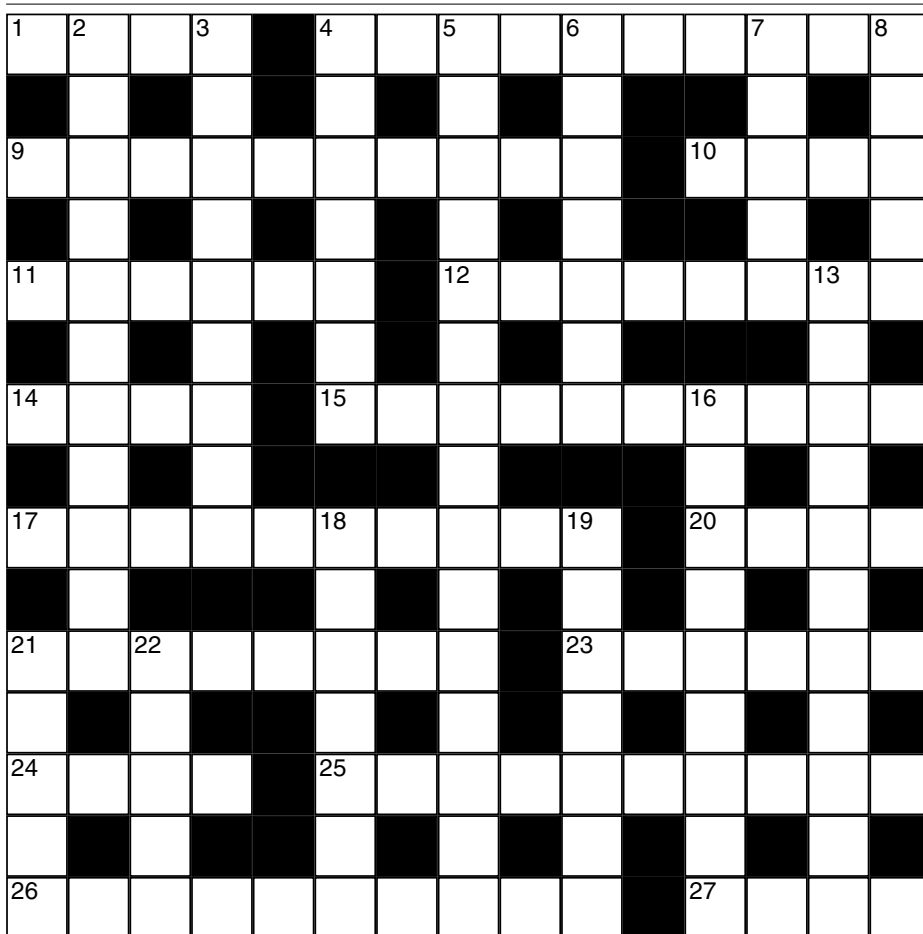
Killer Tough No 9515

21	11		18	9	29	16		
							4	
	10	24					20	
				17	17			21
18		22			23			
				22				9
	24		11		9		13	
9								
		9			19			

As with standard Sudoku, fill the grid so that every column, every row and every 3x3 box contains the digits 1 to 9. Each set of cells joined by dotted lines must add up to the target number in its top-left corner. Within each set of cells joined by dotted lines, a digit cannot be repeated.

Cluelines Stuck on Sudoku, Killer or KenKen? Call 0901 293 6263 before midnight to receive four clues for any of today's puzzles. Calls cost £1 plus your telephone company's network access charge. SP: Spoke, 0333 202 3390 (Mon-Fri 9am-5.30pm).

Times Crossword 28,940



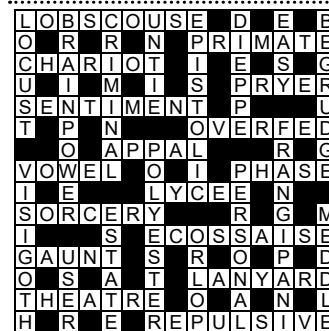
ACROSS

- 1 Bow has only one old bus station? (4)
- 4 Chaotic little dog without lead gets disowned, sadly (6-4)
- 9 Third best exam mark secured by horribly loathsome kid in your class? (10)
- 10 Shred leaves with front part of rake (4)
- 11 Coat mostly stuffed with good wool (6)
- 12 Deeply, oddly enlightened state (8)
- 14 Way to tuck into excellent drink (4)
- 15 Advertiser's rate for feature during sci-fi show? (10)
- 17 A respectable, short debtor's note ultimately proves damaging (10)
- 20 Turn to put out what prisoners do (4)
- 21 Alarm about family's use of certain cosmetics? (8)
- 23 Motorway stopped being repaired (6)
- 24 Religious leader shortly after midnight taking in mass (4)
- 25 Prudish, naff, fancy idea regularly ignored before closer scrutiny (5,5)
- 26 Leader's position in group's last run of gigs (10)
- 27 As a result, work unit introduces nothing (4)

DOWN

- 2 Chaps keen to set out computer jargon (11)
- 3 Expert movement garnering support (9)
- 4 In Paris, a large centre for teens remains free (7)
- 5 Entertainer who might generate a sudden impact? No (5-2,8)
- 6 Resident properly involved in bloody uprising (7)
- 7 Love huge end of a series (5)
- 8 Language that is somewhat hidden or secretive (5)
- 13 One in regiment deployed for horse event (4,7)
- 16 Ruler in crown drinking last drop of Barolo wine (9)
- 18 Acclaimed cellist initially passed on a track (7)
- 19 Brief problem supported by Queen (7)
- 21 Stint requiring months in spring (5)
- 22 Stupid way programme ends? (5)

Yesterday's solution 28,939



Check today's answers by ringing 0905 757 0141 by midnight. Calls cost £1 per minute plus your telephone company's network access charge. SP: Spoke 0333 202 3390.

Solutions

Quick Cryptic 2698

D	W	T	M	D	B						
L	O	G	O	E	V	E	R	Y	M	A	N
V	O	R	S	N	N						
F	E	L	L	E	R	S	H	A	N	D	Y
T	L	A	M								
E	A	S	P	A	S	T	O	R	A	L	
I	I	C	L								
E	L	E	V	E	N	T	H	D	U	F	F
I	U	E	R								
D	I	S	C	U	S	B	U	S	T	E	R
N	T	O	E	E	S						
S	C	H	O	O	N	E	R	R	A	C	E
H	R	G	T	T	O						

Codeword 5237

T	S	M	E	D	B						
T	W	E	E	Z	E	R	S	E	X	I	T
E	Q	M	P	T	B						
J	E	J	U	N	E	A	R	L	Y		
E	N	C	I								
I	S	O	L	A	T	E	T	H	I	C	K
E	O	A	A								
F	L	O	C	K	T	W	I	N	K	L	Y
V	H	K	E								
R	E	W	O	R	K	W	E	A	P	O	N
D	U	O	A	R	N						
A	G	O	H	A	R	D	B	A	C	K	
E	H	L	D	Y	E						

Kakuro 3736

2	1	8	4	3	4	2	1	7		
1	3	6	2	5	6	1	3	9		
6	8	9	2	1	9	4				
7	9				3	8	6	2	1	
	7	9			6	7		8	6	9
9	4	6			8	9		9	7	
6	2	1	3	7					9	7
		2	6	9	8			9	8	6
8	3	7	9		7	4	8	1	2	
6	1	5	8		4	2	6	3	1	

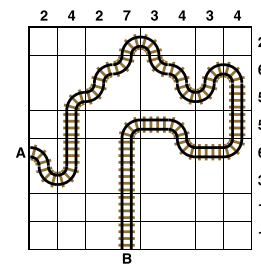
Sudoku 14,979

4	3	2	7	1	9	8	6	5
8	9	7	5	3	6	1	2	4
6	5	1	8	4	2	9	3	7
2	1	6	4	7	3	5	8	9
9	7	8	1	6	5	2	4	3
3	4	5	9	2	8	7	1	6
1	6	3	2	5	7	4	9	8
7	8	4	6	9	1	3	5	2
5	2	9	3	8	4	6	7	1

GK Crossword 237

F	O	R	S	T	E	R	M	I	M	O	S	A	
E	A	U	A	U	I	H							
L	Y	M	E	R	E	G	I	S	N	E	E	P	S
I	B	I	N	C	I	R	A						
C	O	L	I	N	A	L	A	N	S	U	G	A	R
T	E	R	T	K	A	I							
T	E	R	A	F	L	O	P	C	I	T	R	O	N
Y	A	S	P	E	R	K	H	R	A				
J	A	S	P	E	R	S	O	U	T	H	P	A	W
O	I	E	G	M	A	I							
N	A	S	H	V	I	L	L	E	G	A	U	Z	E
E	T	E	U	L	R	L	G						
S	K	I	E	R	T	R	A	P	E	Z	I	U	M
N	S	E	N	E	N	A							
S	E	V	E	R	N	D	O	N	E	G	A	N	

Train Tracks 2265



Sudoku 14,980

7	4	6	5	2	9	1	3	8
9	3	8	1	6	7	4	5	2
1	2	5	3	8	4	9	6	7
6	9	2	7	1	3	5	8	4
8	1	4	9	5	6	2	7	3
5	7	3	2	4	8	6	9	1
4	6	9	8	7	2	3	1	5
3	5	7	4	9	1	8	2	6
2	8	1	6	3	5	7	4	9

Cell Blocks 5120

3				3	
	2				
			4		
		6	3	2	5
		6		2	
10			3		

Set Square 3739

5	+	8	×	3
+		-		×
7	×	1	-	4
+		×		-
6	+	2	×	9

Lexica 7463

P	O	L	L		
I		U			
C	O	N	B		
K		G	R	I	P
L				B	
E	N	D			

Sudoku 14,981

8	9	6	5	2	7	3	1	4
3	7	2	1	8	4	9	6	5
5	4	1	6	3	9	7	2	8
4	2	8	9	7	3	6	5	1
9	1	7	8	5	6	2	4	3
6	3	5	4	1	2	8	7	9
1	6	3	2	4	8	5	9	7
7	5	9	3	6	1	4	8	2
2	8	4	7	9	5	1	3	6

Futoshiki 4777

3	4	5	2	1
	∨		∧	
4	2	1	3	< 5
		∧		
1	3	2	5	4
	∨	∧	∨	
5	1	3	4	2
		∧	∧	
2	< 5	4	1	3

KenKen 6229

2 ⁺	6	3	2	4	5	1
2 ⁺	4	2	6	3	1	5
3	3	6	1	5	2	4
10 [×]	5	1	4	6	3	2
1 ⁻	1	5	3	2	4	6
2 ⁺	2	4	5	1	6	3

Lexica 7464

S					
C	O	M	I	N	G
A		A		I	
L	E	N	G	T	H
P			O		
	C	U	T	E	

Today's solutions

Killer 9512

7	3	1	6	9	2	8	5	4
5	4	2	1	7	8	6	9	3
9	8	6	3	4	5	1	7	2
2	1	8	5	3	6	9	4	7
6	5	4	7	2	9	3	1	8
3	7	9	4	8	1	2	6	5
8	9	5	2	1	4	7	3	6
1	6	3	8	5	7	4	2	9
4	2	7	9	6	3	5	8	1

Killer 9513

4	5	9	8	2	1	7	3	6
2	6	1	3	9	7	4	8	5
7	8	3	6	4	5	2	9	1
6	2	8	4	3	9	5	1	7
5	9	7	2	1	6	8	4	3
3	1	4	5	7	8	6	2	9
8	3	5	1	6	2	9	7	4
1	7	6	9	8	4	3	5	2
9	4	2	7	5	3	1	6	8

Cryptic Quintagram

- 1 Cull
- 2 Mater
- 3 Modern
- 4 Jawbone
- 5 Stagecoach

Suko 4139

5	4	3
17	10	
6	2	1
25	18	
9	8	7

Brain Trainer

- Easy 72
- Medium 983
- Harder 6,405

Word watch

- Stomatic** (b) Pertaining to the mouth (*Collins*)
- Spitcher** (a) Done for, doomed (*Chambers*)
- Pharmakos** (b) A scapegoat (*OED*)

Chess – Winning Move

1 ... Qe2! targets the f2-square. The only reasonable reply, 2 Rf1, then runs into 2 ... Qxf3+! 3 Kxf3 Nd2+ 4 Kg2 Nxb3 and Black emerges with an extra piece

Sudoku fiendish

		8 4 6		8 4
			2 1	
9		1		2
8	2		4 9	
7			5	
	9	6 4		3
8	2	3		
6		1	9	

Killer tricky

Fill the grid so that every column, every row and every 3x3 box contains the digits 1 to 9. Each set of cells joined by dotted lines must add up to the target number in its top-left corner. Within each set of cells joined by dotted lines, a digit cannot be repeated.

12	23	11			19			14
			24	20				
17	9				20			22
					9			
	19					8	20	
	27				22			
12	14		8				3	12
	7	12				17		
			13					11

Suko

16		20
18		19

23	12	10
----	----	----

Place the numbers 1 to 9 in the spaces so that the number in each circle is equal to the sum of the four surrounding spaces, and each colour total is correct

Codeword

Every letter in the crossword-style grid, right, is represented by a number from 1 to 26. Each letter of the alphabet appears in the grid at least once. Use the letters already provided to work out the identity of further letters. Enter letters in the main grid and the smaller reference grid until all 26 letters of the alphabet have been accounted for. Proper nouns are excluded.

12	7	12	26		24	12	A	22	15	25	9	9	2
1		15		1		25		19		10			20
5	18	12	17	17	20	16		23	18	10	20	17	
18		10		12		12		1		17		25	
12	10	11	16	26		21	9	9	3	M	20	15	
19				9		20				23		20	
22	9	23	19	22	6		18	22	19	23	20	14	
11		18				17		18				12	
	10	16	12	23	3	12		6	16	9	9	3	
8		10		20		13		6		1		19	
12	1	24	20	15		13	17	20	23	24	20	22	
3		18		12		19		11		17		20	
10	12	17	20	22	11	12	16		4	20	20	17	

X B C D E F G H I J K L M N O P Q R S T U V W X Y Z

1	2	3	M	4	5	6	7	8	9	10	11	12	A	13
14	15	16	17	18	19	20	21	22	23	S	24	25	26	

Mini Sudoku

Fill in the grid so that every column, every row and every 3x2 box contains the digits 1 to 6

4	1	2	5	6	3
	5	3	6	4	
2					5
	3			2	

Solutions in tomorrow's Times2

THE  TIMES

MindGames Tuesday June 11 2024
Brain boost puzzles

Yesterday's solutions

SAMURAI

2	5	4	7	6	1	8	3	9			8	3	4	7	9	2	5	1	6	
1	6	8	3	9	2	4	7	5			5	1	7	4	8	6	9	3	2	
7	9	3	4	8	5	2	6	1			6	2	9	5	3	1	4	8	7	
3	2	1	9	4	6	5	8	7			4	8	2	3	1	5	7	6	9	
8	4	9	5	2	7	6	1	3			1	7	6	2	4	9	3	5	8	
6	7	5	1	3	8	9	4	2			3	9	5	6	7	8	2	4	1	
4	1	7	8	5	9	3	2	6	8	4	7	9	5	1	8	2	3	6	7	4
9	3	2	6	1	4	7	5	8	9	1	6	2	4	3	1	6	7	8	9	5
5	8	6	2	7	3	1	9	4	3	2	5	7	6	8	9	5	4	1	2	3
						2	7	3	4	9	8	6	1	5						
						8	4	5	6	7	1	3	2	9						
						9	6	1	2	5	3	4	8	7						
7	9	6	4	1	3	5	8	2	7	6	9	1	3	4	2	8	9	7	5	6
4	8	1	2	5	9	6	3	7	1	8	4	5	9	2	7	6	3	1	4	8
3	5	2	8	7	6	4	1	9	5	3	2	8	7	6	5	4	1	3	9	2
2	1	5	6	3	4	9	7	8				3	5	9	4	7	8	2	6	1
8	6	3	9	2	7	1	5	4				4	1	8	6	3	2	5	7	9
9	7	4	1	8	5	2	6	3				6	2	7	1	9	5	4	8	3
5	3	9	7	6	2	8	4	1				7	8	3	9	2	4	6	1	5
6	2	8	3	4	1	7	9	5				9	4	1	3	5	6	8	2	7
1	4	7	5	9	8	3	2	6				2	6	5	8	1	7	9	3	4

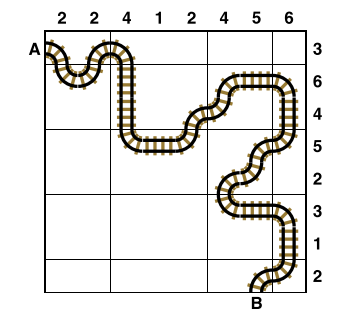
SUKO

7	1	8
6	3	4
2	9	5

MINI SUDOKU

2	4	6	3	5	1
1	5	3	6	2	4
5	3	4	1	6	2
6	2	1	5	4	3
3	6	2	4	1	5
4	1	5	2	3	6

TRAIN TRACKS



FUTOSHIKI

2	3	4	5	1
4	2 >	1	3	5
1 <	5 >	3	2 <	4
3	4	5	1	2
5	1 <	2	4	3

SUDOKU

4	1	2	3	8	6	5	7	9
7	9	8	4	1	5	3	6	2
3	6	5	9	2	7	4	8	1
1	2	4	6	9	3	8	5	7
8	3	9	5	7	2	1	4	6
5	7	6	8	4	1	9	2	3
2	8	7	1	3	4	6	9	5
9	5	1	7	6	8	2	3	4
6	4	3	2	5	9	7	1	8

KILLER

9	2	1	7	8	5	6	4	3
4	8	6	3	9	2	7	1	5
7	3	5	1	6	4	9	2	8
6	1	9	4	5	7	8	3	2
8	5	4	9	2	3	1	7	6
3	7	2	8	1	6	4	5	9
5	9	8	2	4	1	3	6	7
1	6	7	5	3	9	2	8	4
2	4	3	6	7	8	5	9	1

CODEWORD

R	E	N	E	G	A	D	E	P	A	S
U	A	L	O	B	M	A				
M	O	U	S	E	O	V	E	R	A	R
B	G	N	M	E	Z	P				
A	C	H	E	S	E	A	S	H	E	L
	T	R	D	W		E				
M	A	Y	H	E	M	W	A	R	M	E
A		V	R	X	I					
J	U	D	D	E	R	E	D	F	L	A
E	R	L	N	S	I	A				
S	Q	U	A	R	E	D	K	I	T	T
T	N	Y	E	E	I	A				
Y	O	K	E	D	R	A	W	B	A	C