

**Sudoku** Difficult No 15,435

			4	7				
						4		2
				5	3	9		
7			3			2		
3		5			1			4
		6		9			1	
	9	3	2				4	
					5	1		6
	2			4			3	

**Fiendish** No 15,436

**Super fiendish** No 15,437

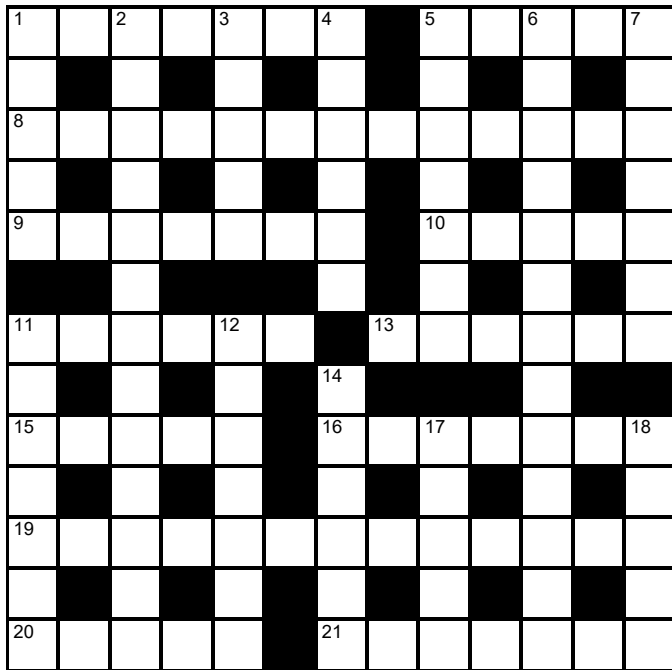
			7					
		4	3	8		1		
	8							2
6	2			7		9	1	
	3		5	6		4		8
	1		9	3			2	
			8			7		
		9		1				

				4				
	2			3	8			7
5		8				9		4
2		5				7		1
			7					
6		3				5		8
1		2				3		5
	4			1	2			6
				7				

© PUZZLER MEDIA

**Cluelines** Stuck on Sudoku, Killer or KenKen? Call 0901 293 6263 before midnight to receive four clues for any of today's puzzles. Calls cost £1 plus your telephone company's network access charge. SP: Spoke, 0333 202 3390 (Mon-Fri 9am-5.30pm).

The Times Quick Cryptic No 2850 by Breadman



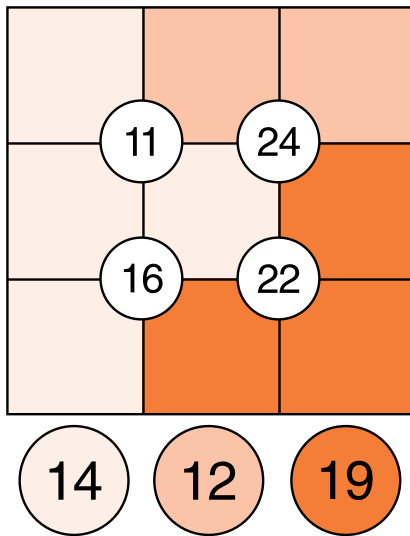
Across

- 1 Flat-bottomed boat not so heavy (7)
- 5 Anaesthetic in patella colonel recalled (5)
- 8 Exotic mineral found by steadfast traveller out of this world (4,9)
- 9 Kentish chap grabs minute portion (7)
- 10 German agreed to track port and Spanish wine (5)
- 11 Composer and Charlie enter vehicle? (6)
- 13 Individual keeps tree burning (2,4)
- 15 Heather in charge during long period (5)
- 16 Disregard false leg caught in fishing gear (7)
- 19 African landmark old monarch declines (8,5)
- 20 Rugby star, missing half year, out of practice (5)
- 21 Slippery creature among salespeople lying about earring (7)

Down

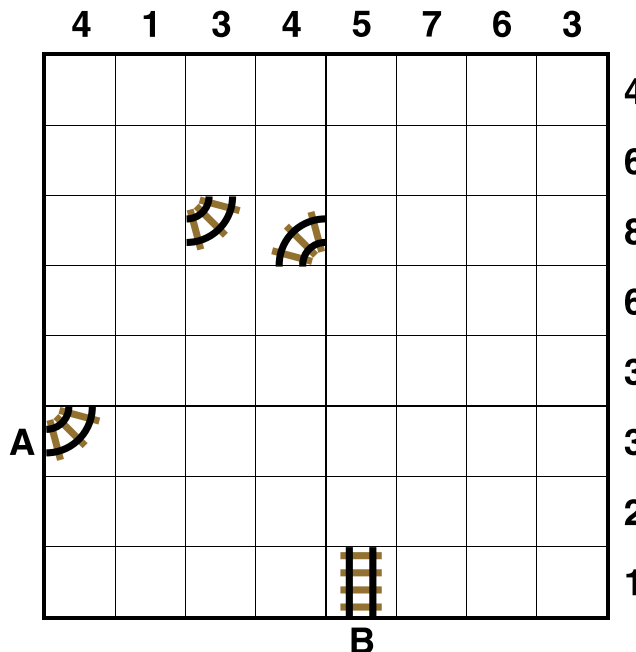
- 1 Golf course with large signs in US (5)
- 2 Attending pastry chefs regularly failing to cope (5,2,6)
- 3 Comb back of mullet with simplicity (5)
- 4 TV accessory's key test probing centre of screen (6)
- 5 Former Republican working afterwards (5,2)
- 6 Line of people cold, on edge, wanting electrical device (9,4)
- 7 Heave into narrow sled: suitcases, holdalls, etc (7)
- 11 Chopper used for taking holiday in Cromer's outskirts (7)
- 12 In motor racing, a burst's overcome initially, acting all together (2,1,4)
- 14 Heard enjoyable rock (6)
- 17 Georgia — fine, feminine English bloomer (5)
- 18 Shocking weapon seaman hides somewhere peripherally (5)

Suko No 4290



Place the numbers 1 to 9 in the spaces so that the number in each circle is equal to the sum of the four surrounding spaces, and each colour total is correct

Train Tracks No 2416



Lay tracks to enable the train to travel from village A to village B. The numbers indicate how many sections of track go in each row and column. There are only straight sections and curved sections. The track cannot cross itself.

Word watch

David Parfitt

Salvarsan

- a A citizen of a Central American capital
- b A medicine containing arsenic
- c Goods rescued from a shipwreck

Petcock

- a A tap for draining condensed steam
- b A male pheasant
- c Balderdash, nonsense

Foraminate

- a To gather for a public meeting
- b To pierce
- c To feel anticipatory excitement

**Poker** Byron Jacobs

**Getting value**

The previous two columns focused on how to spot weak players at the table and how to engineer situations to play heads-up against them post-flop. If you are relatively experienced and competent then this is a scenario that, in the long run, will be extremely profitable. The most successful players in low to mid-stakes games are the ones who know best how to do exactly this.

Less experienced players generally play "loose-passive". Loose means they play too many hands (and therefore often have weak holdings) and passive means they rarely take the initiative, preferring checking and calling to betting and raising. This is ideal (for you) as it means you are up against someone who will often have a weak hand and will also allow you to set the pace in the play.

Loose-passive players are invariably also quite "sticky", meaning reluctant to fold if they have anything at all. This means that your major source of profit is going to be from value-betting. Value-betting is simply betting when you have a decent hand and can expect to get calls from worse hands. When facing loose and sticky Villains you can do this aggressively.

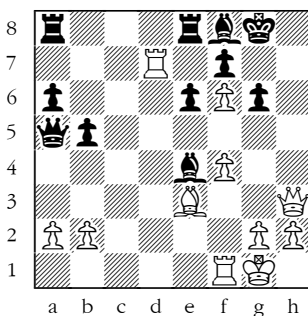
For example, you hold A-10 on a J-10-7 flop. You bet, Villain calls. The turn brings J-10-7-6. When facing a strong player you would consider checking. They may have J-x and the board is co-ordinated

so two-pair hands and even a straight are possible. However, facing your particular opponent, this is a fairly clear betting opportunity as their calling range will be weaker and your A-10 will be ahead most of the time. If nothing changes on the river, bet again.

The drawback when facing these players is that it is difficult to barge them out of the pot with sheer aggression as they call so much. Let's say you have Q♥-10♥ and the flop is J♥-7♣-6♥ so you have a flush draw. You bet the flop and Villain calls. The turn brings J♥-7♣-6♥-A♠. This is moderately helpful in real terms as you now also have a straight draw (completed by a king). The ace is also helpful as you can use to bluff. Your earlier aggression marks you out as having the stronger range and thus more A-x hands. This means the ace is quite likely to have connected with your hand.

A strong player will understand this. So, when facing one, consider a sizeable bet. They will often fold a better hand than yours. However, a loose, sticky Villain is less likely to think this through and if you bet they will err towards calling with hands as weak as 8-7 and even 3-3. As you have queen-high this is not ideal. So check and hope to improve on the river. If you hit the flush or straight, bet big. Another feature of sticky opponents is that they are not sensitive to bet size and tend to call large bets with the same frequency they call smaller ones.

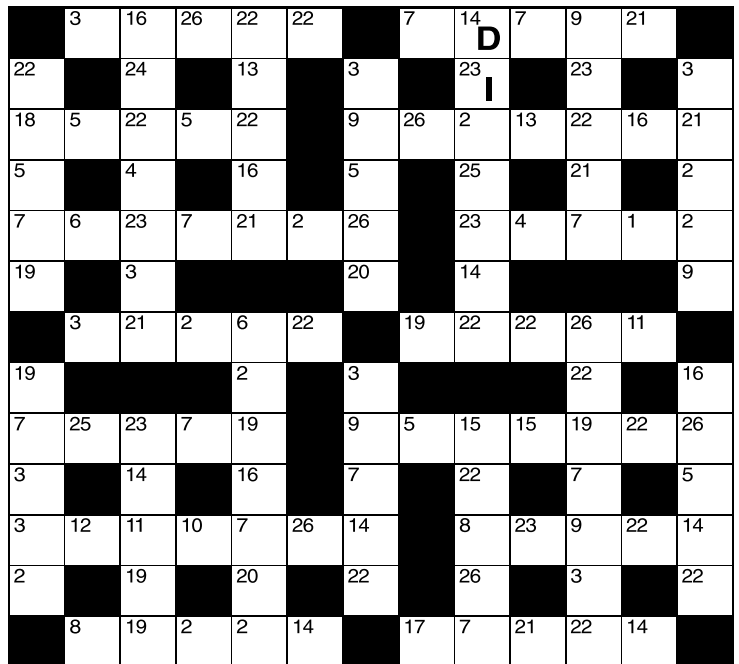
**Winning Move**



**White to play.**  
This position is from Troltenier-Kuandykuly, Titled Tuesday, chess.com 2024.

The pawn on f6 is a real bone in the black throat. However, the bishop on f8 is doing a fine defensive job, covering the vulnerable g7-square. Furthermore it is not immediately obvious how White can make use of the open h-file. The winning blow actually comes from a different direction. What did White play?

**Codeword** No 5389



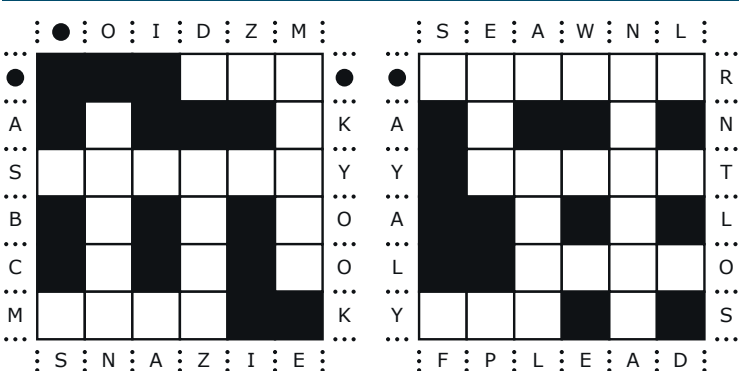
A B C D E F G H I J K L M N O P Q R S T U V W X Y Z

1	2	3	4	5	6	7	8	9	10	11	12	13
14	15	16	17	18	19	20	21	22	23	24	25	26

Every letter in this crossword-style grid is represented by a number from 1 to 26. Each letter of the alphabet appears in the grid at least once. Use the letters already provided to work out the identity of further letters. Enter letters in the main grid and the smaller reference grid until all 26 letters of the alphabet have been accounted for. Proper nouns are excluded.

**Cluelines Stuck on Codeword?** To receive 4 random clues call 0901 293 6262 or text TIMECODE to 64343. Calls cost £1 plus your telephone company's network access charge. Texts cost £1 plus your standard network charge. For the full solution call 0905 757 0142. Calls cost £1 per minute plus your telephone company's network access charge. SP: Spoke, 0333 202 3390 (Mon-Fri, 9am-5.30pm).

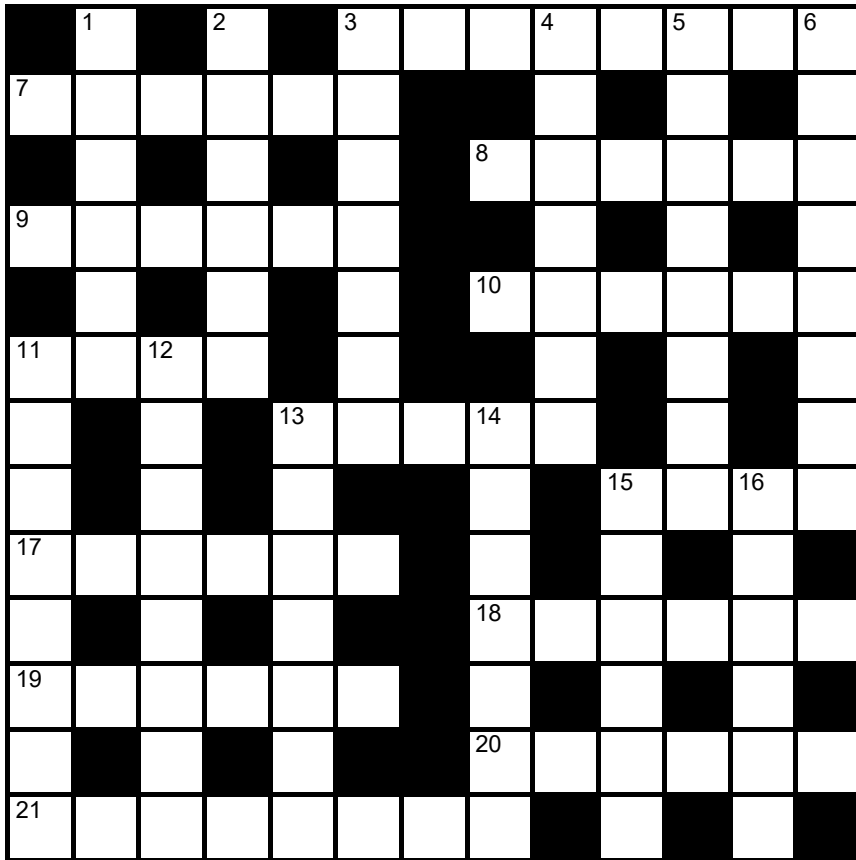
**Lexica** Easy No 7817 Hard No 7818



Slide the letters either horizontally or vertically back into the grid to produce a completed crossword. Letters are allowed to slide over other letters

© PUZZLER MEDIA

times2 Crossword No 9705



**Across**

- 3 Fully reserved, sold out (6,2)
- 7 Make less concentrated (6)
- 8 Fame, celebrity (6)
- 9 Powerful, mighty (6)
- 10 Heaviness (6)
- 11 Natural satellite (4)
- 13 Set fire to (5)
- 15 Move or fly restlessly (4)

17 Younger (6)

- 18 Happiness (6)
- 19 Elevated (6)
- 20 Strenuous, sapping (6)
- 21 In a self-effacing manner (8)

**Down**

- 1 Small restaurant (6)
- 2 Bribe or induce into committing an offence (6)
- 3 South Asian language (7)
- 4 Most enthusiastic (7)
- 5 Rugby score achieved with the boot (4,4)
- 6 Sorry for one's sins (8)
- 11 Mediterranean herb (8)
- 12 Receptive attitude (4,4)
- 13 Female big cat (7)
- 14 Arrogant (7)
- 15 Religious establishment for mendicant orders (6)
- 16 Mean (to) (6)

**Solution to Crossword 9704**



**Need help with today's puzzle?** Call 0905 757 0143 to check the answers. Calls cost £1 per minute plus your telephone company's network access charge. SP: Spoke, 0333 202 3390 (Mon-Fri 9am-5.30pm).

**KenKen** Medium No 6381

1-		5-		3-	2÷
11+		3÷			
6×		2÷		45×	
11+		60×		6	
		1-		10+	6×
1-					

All the digits 1 to 6 must appear in every row and column. In each thick-line "block", the target number in the top left-hand corner is calculated from the digits in all the cells in the block, using the operation indicated by the symbol.

© 2010 KENKEN PUZZLE & TIM MEXTOY, DIST. BY UFS, INC. WWW.KENKEN.COM

**Futoshiki** No 4929

<input type="text"/>	<	<input type="text"/>	<input type="text"/>	<	<input type="text"/>	<input type="text"/>	<input type="text"/>
<input type="text"/>		<input type="text"/>	<input type="text"/>		<input type="text"/>	<input type="text"/>	^
<input type="text"/>		<input type="text"/>	<input type="text"/>		<input type="text"/>	<input type="text"/>	<input type="text"/>
<input type="text"/>		3	>	<input type="text"/>	<input type="text"/>	<input type="text"/>	<input type="text"/>
<input type="text"/>		^		<input type="text"/>		<input type="text"/>	<input type="text"/>
<input type="text"/>		<input type="text"/>	<	<input type="text"/>	<input type="text"/>	<	<input type="text"/>
<input type="text"/>		<input type="text"/>		<input type="text"/>		2	<

Fill the blank squares so that every row and column contains each of the numbers 1 to 5 once only. The symbols between the squares indicate whether a number is larger (>) or smaller (<) than the number next to it.

**Kakuro** No 3888

		16	23		7	41	7	17	33	
	7			25						4
	16			23						
24				20				12		
14			24		41			8	12	
		21						9		
	5			12				10		
	16			19				11		
7	15			8				6		
			13			11				
36			13			10		11		
	16							5		

Fill the grid using the numbers 1 to 9 only. The numbers in each horizontal or vertical run of white squares add up to the total in the triangle to its left or above it. The same number may occur more than once in a row or column, but not within the same run of white squares.

© PUZZLER MEDIA

**Quintagram®**

Solve all five cryptic clues using each letter underneath once only

- Pastry dish left in cooling device (4)  
\_ \_ \_ \_
- Fib about receiving graduate's message (5)  
\_ \_ \_ \_ \_
- Talk about dropping son off for athletics event (6)  
\_ \_ \_ \_ \_ \_
- Bit of swagger man exhibits, which is appropriate (7)  
\_ \_ \_ \_ \_ \_ \_
- Resident dressed like a nun, meeting worker? (10)  
\_ \_ \_ \_ \_ \_ \_ \_ \_ \_

A	A	A	A	A	B	C	D
E	E	E	F	G	H	I	I
I	I	L	L	M	M	N	N
N	N	R	S	S	T	T	U

Brain Trainer

<b>EASY</b>	14	x 4	- 4	÷ 2	+ 8	x 3	$\frac{1}{2}$ OF IT	+ 6	$\frac{2}{3}$ OF IT	÷ 2	<b>ANSWER</b>	
<b>MEDIUM</b>	23	x 5	+ 67	$\frac{1}{2}$ OF IT	x 2	+ 87	$\frac{2}{3}$ OF IT	+ 56	x 2	- 68	<b>ANSWER</b>	
<b>HARDER</b>	118	+ 556	x 6	+ 188	75% OF IT	- 969	$\frac{1}{5}$ OF IT	+ 758	$\frac{3}{4}$ OF IT	- 472	<b>ANSWER</b>	

Polygon

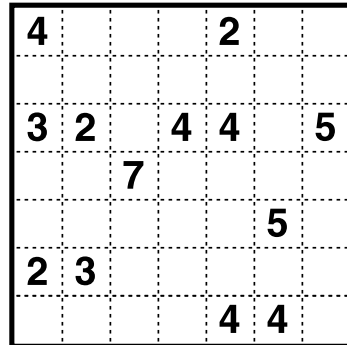


From these letters, make words of **four** or more letters, always including the central letter. Answers must be in the *Concise Oxford Dictionary*, excluding capitalised words, plurals, conjugated verbs (past tense etc), adverbs ending in LY, comparatives and superlatives. **How you rate** 12 words, average; 17, good; 21, very good; 25, excellent

Yesterday's answers

age, ago, ego, gap, gape, gas, gasp, gat, gate, get, goat, page, peg, **postage**, potage, sag, sage, sago, stag, stage, tag, teg, tog, toga

Cell Blocks No 5272



Divide the grid into square or rectangular blocks, each containing one digit only. Every block must contain the number of cells indicated by the digit inside it.

Set Square No 3891

	+	+	3	= 10
+	■	+	■	+
	x	+	8	= 44
+	■	+	■	-
	+	-		= 12
=		=	=	
17		16		10

Enter each of the numbers from 1 to 9 in the grid, so that the six sums work. We've placed two numbers to get you started. Each sum should be calculated left to right or top to bottom.

Please note, BODMAS does not apply

Killer Tricky No 9816

29	9	12	11		19	16	13	
			21					26
			10					
8				11			18	
22			13	3	15			
	10							6
13		19		8		11		
4				13		21		
7		16		10			11	

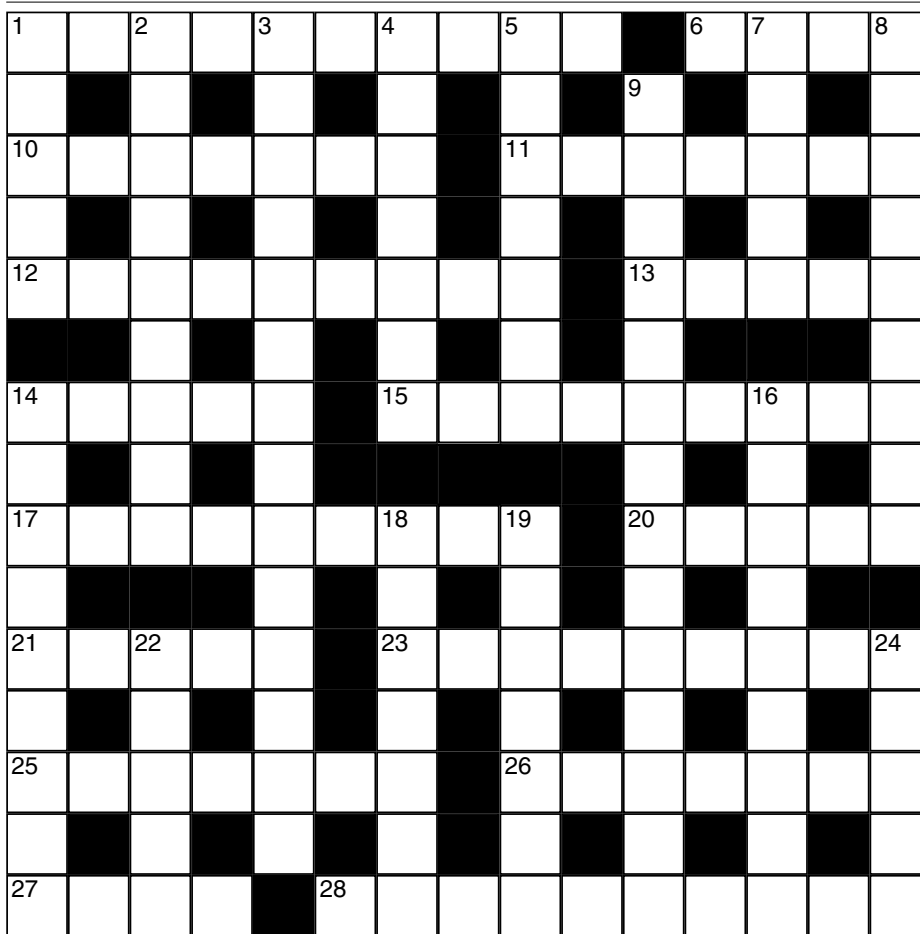
Killer Deadly No 9817

13		13		36			32	
		42		21				
32								
				45			15	
	19						6	16
8			9		41			
	21		22		9			
		5						

As with standard Sudoku, fill the grid so that every column, every row and every 3x3 box contains the digits 1 to 9. Each set of cells joined by dotted lines must add up to the target number in its top-left corner. Within each set of cells joined by dotted lines, a digit cannot be repeated.

**Cluelines** Stuck on Sudoku, Killer or KenKen? Call 0901 293 6263 before midnight to receive four clues for any of today's puzzles. Calls cost £1 plus your telephone company's network access charge. SP: Spoke, 0333 202 3390 (Mon-Fri 9am-5.30pm).

Times Crossword 29,091



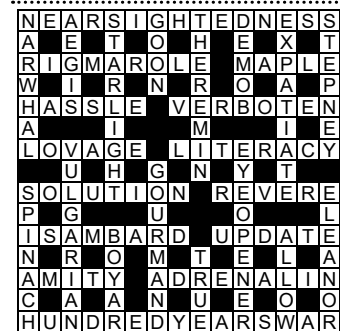
ACROSS

- 1 Crucial moment of stomach workout? (6,4)
- 6 Seize boat that's docked in reverse (4)
- 10 Construction of bars seen around extravagant home (7)
- 11 Was on the bench, say, with team lacking water carrier? (7)
- 12 Time taken up by mixing delicate drink (4,5)
- 13 Grumpy after end of director's cut for *Taxi Driver* (5)
- 14 Over Tannoy, makes illegal announcement about match (5)
- 15 Exploits Democrat blundering before event (7-2)
- 17 States things in a camera incorrectly? (9)
- 20 Said yes, ignoring a deadly sin (5)
- 21 Period spent in strike? (5)
- 23 Detectives lost out (9)
- 25 Refuse place in sport workshop (7)
- 26 Delivered beer intended for infirmity (7)
- 27 Star returns seizing time for snack (4)
- 28 Queen, potentially, with even less money for merchant? (10)

DOWN

- 1 Prickly types caught opening of play (5)
- 2 Put ethane in a new configuration to add more risk (2,3,4)
- 3 Islanders check out novel writer (7,7)
- 4 Sweet Edward posted to followers (7)
- 5 Back worker to assemble bulk of money? (7)
- 7 Right, what was that muscle treatment programme? (5)
- 8 Boy secures lines on trees for film industry (9)
- 9 Present lady's leg? (8,6)
- 14 Bishop doesn't have pale or dark pen, perhaps? (5,4)
- 16 Cries of surprise reach a climax after grand technical jargon (9)
- 18 Fixed radar on small European country (7)
- 19 Pass with two good marks and a bad one (7)
- 22 Tour regularly has scrap round route (5)
- 24 Possibly does without roof of tower block (5)

Yesterday's solution 29,090



Check today's answers by ringing 0905 757 0141 by midnight. Calls cost £1 per minute plus your telephone company's network access charge. SP: Spoke 0333 202 3390.

Solutions

Quick Cryptic 2849

P	R	I	M	E	R	S	A	F	A	R	I
O	E	U	C	L	E						
W	A	R	D	A	N	C	E	O	O	P	S
C	H	I	C	B	U	T	T	R	E	S	S
	A	A	A	I	E						
S	T	A	L	A	G	C	R	O	W	D	S
E		A	A	A	B						
I	M	M	O	R	T	A	L	S	A	L	E
P	F	E		E	A						
B	E	E	F	L	E	V	E	R	A	G	E
S	E	L	A	V	E						
S	T	A	R	V	E	T	H	E	O	R	Y

Codeword 5388

Q	U	A	N	D	A	R	Y	I	R	I	S
U	L	O	A	B	E	L					
I	N	F	E	R	P	R	O	V	I	S	O
L	A	Y	T	X	G	O					
T	I	L	T	D	O	O	R	K	N	O	B
	F	U	R	O							
C	H	A	S	T	E	M	O	R	T	A	R
Y		E	G	M	A						
C	H	A	I	N	S	A	W	O	B	O	E
L	T	S	T	E	L	N					
O	U	T	S	I	Z	E	P	R	E	S	S
N	I	L	A	I	A	U					
E	T	C	H	J	U	N	C	T	U	R	E

Kakuro 3887

6	9		5	2	1		1	5		
1	8		9	8	2	3	6	7	5	
		5	8				1	2	9	7
			4	6		1	4	7		
1	5		3	2	9	6	8	1	7	
3	4	2	5	1	8	7			5	9
			9	8	5		2	7		
1	8	6	2					9	2	
3	9	5	4	1	2	8			9	2
		5	1		3	8	9		6	1

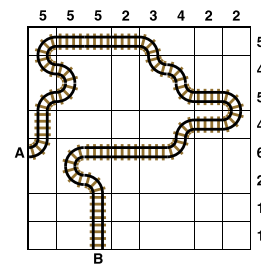
Sudoku 15,432

3	4	6	9	8	1	7	5	2
1	5	9	2	7	4	8	3	6
2	8	7	6	5	3	1	9	4
8	3	4	5	1	9	6	2	7
5	6	1	8	2	7	3	4	9
7	9	2	3	4	6	5	8	1
4	7	5	1	3	2	9	6	8
9	2	3	7	6	8	4	1	5
6	1	8	4	9	5	2	7	3

Tetonor 523

40	72	18	252
20 + 20	12 x 6	12 + 6	18 x 14
57	38	400	22
19 x 3	15 + 23	20 x 20	19 + 3
22	336	32	50
16 + 6	8 x 42	18 + 14	8 + 42
345	19	96	48
15 x 23	16 + 3	6 x 16	3 x 16

Train Tracks 2415



Sudoku 15,433

4	2	8	9	3	7	1	5	6
1	5	7	4	2	6	9	3	8
6	3	9	5	1	8	2	4	7
9	8	3	1	5	4	7	6	2
7	1	4	2	6	3	5	8	9
5	6	2	8	7	9	3	1	4
8	9	5	7	4	1	6	2	3
2	7	6	3	8	5	4	9	1
3	4	1	6	9	2	8	7	5

Cell Blocks 5271

4				2
	8			
				2
6			3	3
		12		
3		4	2	

Set Square 3890

4	+	7	x	6
+		+		x
9	x	1	+	8
-		x		x
3	-	2	+	5

Lexica 7815

					H
	W	O	R	S	E
	E				R
H	A	T		B	
				A	
R	E	V	E	R	T

Sudoku 15,434

2	3	1	4	7	6	8	5	9
7	6	5	8	3	9	1	4	2
8	9	4	5	1	2	7	3	6
1	7	8	9	6	3	5	2	4
3	4	2	7	8	5	6	9	1
9	5	6	1	2	4	3	8	7
4	8	3	6	9	7	2	1	5
5	1	7	2	4	8	9	6	3
6	2	9	3	5	1	4	7	8

Futoshiki 4928

2	<	4		5		3		1
		^						
1		5		3	>	2		4
4		3		1		5		2
5		1		2		4		3
3		2		4		1		5

KenKen 6380

2 <sup>+</sup>	1	2	4	5	3	6
2 <sup>+</sup>	3	3	5	4	2	1
3 <sup>-</sup>	3	4	2	6	1	5
4	4	1	6	3	5	2
12 <sup>+</sup>	2	5	3	1	6	4
5 <sup>-</sup>	5	6	1	2	4	3

Lexica 7816

					W
F	I	A	S	C	O
L			N		O
E		B	A	L	D
D			R		E
		C	L	A	D

Today's solutions

Killer 9814

1	4	2	9	6	8	7	5	3
3	9	8	7	5	2	6	1	4
6	5	7	3	4	1	2	9	8
9	8	5	2	7	4	3	6	1
2	3	6	8	1	5	9	4	7
4	7	1	6	9	3	8	2	5
7	2	4	5	3	9	1	8	6
5	6	9	1	8	7	4	3	2
8	1	3	4	2	6	5	7	9

Killer 9815

2	7	4	9	8	1	6	3	5
1	3	6	5	4	7	2	8	9
9	5	8	6	2	3	4	1	7
8	4	7	3	5	2	1	9	6
3	6	1	7	9	8	5	2	4
5	2	9	4	1	6	3	7	8
6	9	3	1	7	4	8	5	2
7	1	2	8	6	5	9	4	3
4	8	5	2	3	9	7	6	1

Cryptic Quintagram

- 1 Flan
- 2 Email
- 3 Discuss
- 4 Germane
- 5 Inhabitant

Suko 4290

2	5	7
11	24	
1	3	9
16	22	
8	4	6

Brain Trainer

- Easy 19
- Medium 888
- Harder 2,081

Word watch

- Salvarsan** (b) A medicine containing arsenic (*Collins*)
- Petcock** (a) A tap for draining condensed steam (*Chambers*)
- Foraminate** (b) To pierce (*OED*)

Chess – Winning Move

- 1 Rxf7! powers through. After 1... Kxf7 (1... g5 is met by 2 Qh5 and the further advance f5 will quickly prove decisive)
- 2 Qh7+ Kxf6 3 Bd4+ e5 (3... Kf5 4 Qh3 mate) 4 fxe5+ Ke6 5 Qf7 mate





## Sudoku easy

	9		6		4			1
		2				4		
8			1		2			6
	5	4				2	3	
	6	1				7	4	
				5				
	1	6	7		3	5	8	
		3		1		6		

## Killer gentle

Fill the grid so that every column, every row and every 3x3 box contains the digits 1 to 9. Each set of cells joined by dotted lines must add up to the target number in its top-left corner. Within each set of cells joined by dotted lines, a digit cannot be repeated.

13	16	4			10		22	10	
		9			3				7
8	5	15	16	15	27	3	6		
									12
	14	7	7			7	17		
16				8					8
	12	10		5	19				
			14		8			13	
14				21					4

## Suko

13	20	
23	30	

10	19	16
----	----	----

Place the numbers 1 to 9 in the spaces so that the number in each circle is equal to the sum of the four surrounding spaces, and each colour total is correct

## Codeword

Every letter in the crossword-style grid, right, is represented by a number from 1 to 26. Each letter of the alphabet appears in the grid at least once. Use the letters already provided to work out the identity of further letters. Enter letters in the main grid and the smaller reference grid until all 26 letters of the alphabet have been accounted for. Proper nouns are excluded.

	24	6	9	3	16	21	24		23	11	23	26
23		26				5		5		23		24
13	26	24	24	8	24	26		20	3	6	18	24
13		23		14		24		24		2		13
9	3	22	17	14		12	5	4	24	10	14	
3				9		19		16		23		6
6	14	21	22	14	21		21	9	14	25	9	19
12		24		7		17		14				23
	17	26	5	3	21	24		10	26	23	3	20
16		16		6		23		24		25		3
23	26	24	20	23		15	3	10	24	14	24	10
21		20		9		24				2		24
21	24	12	12		6	26	14	1	5	24	12	

X B C D E F G H I J K L M N O P Q R S T U V W X Y Z

1	2	3	4	5	6	7	8	9	10	11	12	13	
									D				
14	15	16	17	18	19	20	21	22	23	A	24	25	26
											W		

## Mini Sudoku

Fill in the grid so that every column, every row and every 3x2 box contains the digits 1 to 6

	3			2	
		1	6		
1					4
3					2
		4	3		
	1			4	

Solutions in tomorrow's Times2

THE  TIMES

**MindGames** Wednesday December 4 2024  
Brain boost puzzles

