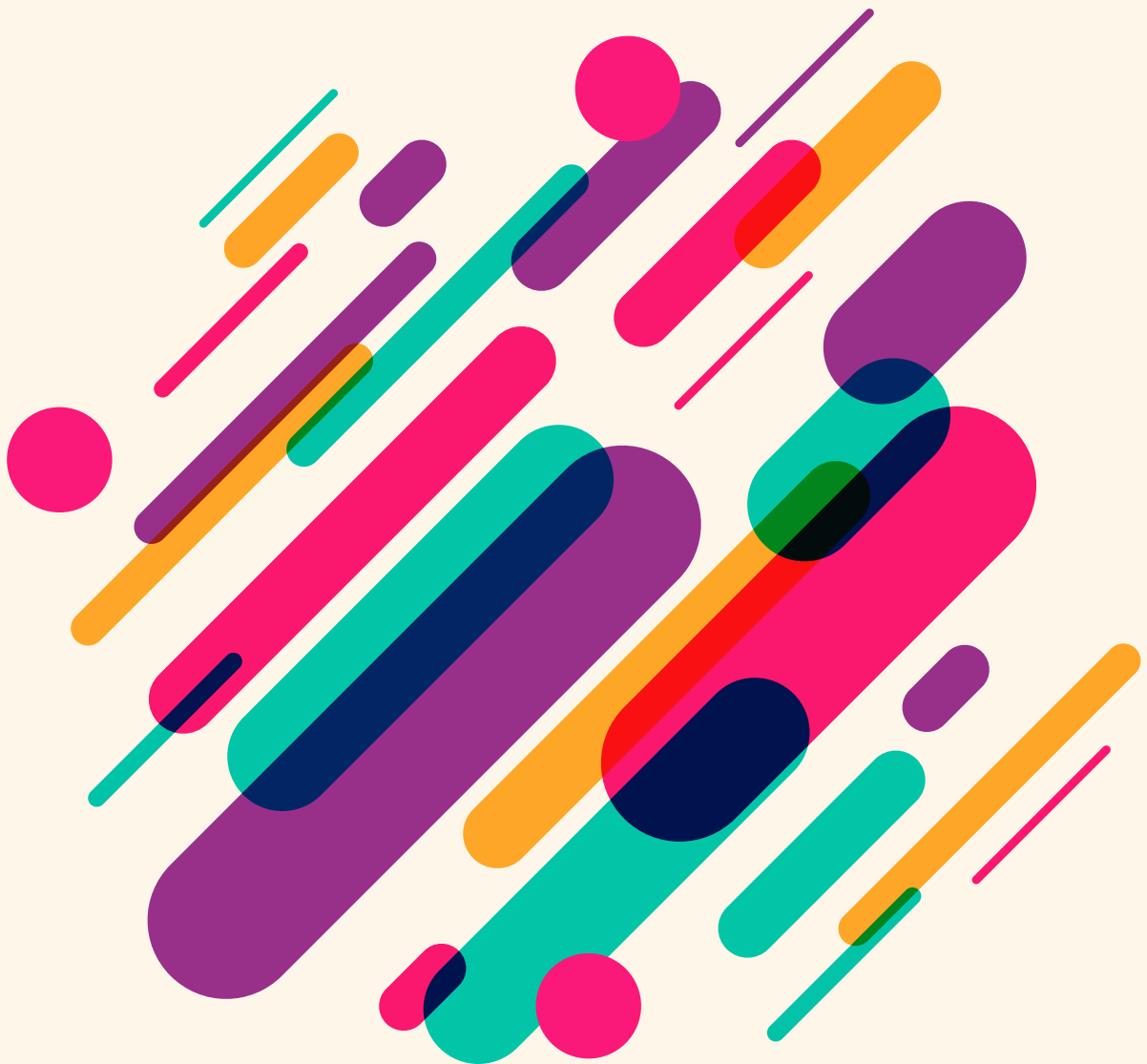




Nutrition Research and Practice

pISSN 1976-1457
eISSN 2005-6168

Vol. 18 · No. 3 · June 2024



The Korean Nutrition Society
The Korean Society of Community Nutrition



Contents

Original Research

- 309** Anti-osteoporotic effects of *Boswellia serrata* gum resin extract *in vitro* and *in vivo*
Hyun Sook Lee, Jae In Jung, In-Kee Hong, YoungSun Jang, Hye-Bin Kim, Eun Ji Kim
- 325** Kaempferol ameliorates metabolic syndrome by inhibiting inflammation and oxidative stress in high-fat diet-induced obese mice
Su-Kyung Shin, Eun-Young Kwon
- 345** Hypoglycemic and hypolipidemic effects of unsaponifiable matter from okra seed in diabetic rats
Dongyeon Seo, Naeun Kim, Ahyeong Jeon, Jihyun Kwon, In-hwan Baek, Eui-Cheol Shin, Junsoo Lee, Younghwa Kim
- 357** Liquid collagen from freshwater fish skin ameliorates hydration, roughness and elasticity in photo-aged skin: a randomized, controlled, clinical study
Joong Su Lee, Yeo Cho Yoon, Ju Myung Kim, Yun-Ho Kim, Young-Hee Kang, Yong Chul Shin
- 372** Development of a frailty prevention program including nutrition and exercise interventions for older adults in senior daycare centers in South Korea using a mixed methods research design
Jiwon Sim, Jongguk Lim, Eunji Ko, Eunjin Jang, Minjeong Jeong, Sohyun Park
- 387** Relationships among tooth loss, prefrailty, and dietary patterns in community-dwelling older Japanese females: a cross-sectional study
Tatsumi Hayashi, Rumi Sato, Kazuo Tamura
- 400** Malnutrition and its associated factors among community-dwelling older men living alone
Gahye Kim, Minhwa Hwang, Seonghyeon Lee, Yeon-Hwan Park
- 412** Iodine intake from brown seaweed and the related nutritional risk assessment in Koreans
Sung Ok Kwon, Kwang-Il Kwon, Mi-Young Lee, Hye Young Lee, Cho-il Kim
- 425** A study on the relationship between purchases of meal kits and home meal replacements
Jong-Youn Rha, Haerang Lee, Sohyun Kim, Youngwon Nam

Short Communication

- 436** A combination of myokines and genistein suppresses cancer stemness in MCF-7 human breast cancer cells
Hyeji Kwon, Yuri Kim, Jung Hyun Kim

Erratum

- 446** Erratum: Analysis of dietary behavior and intake related to glycemic control in patients with type 2 diabetes aged 30 years or older in Korea: Utilizing the 8th Korea National Health and Nutrition Examination Survey (2019–2021)

Jin-Ah Seok, Yeon-Kyung Lee