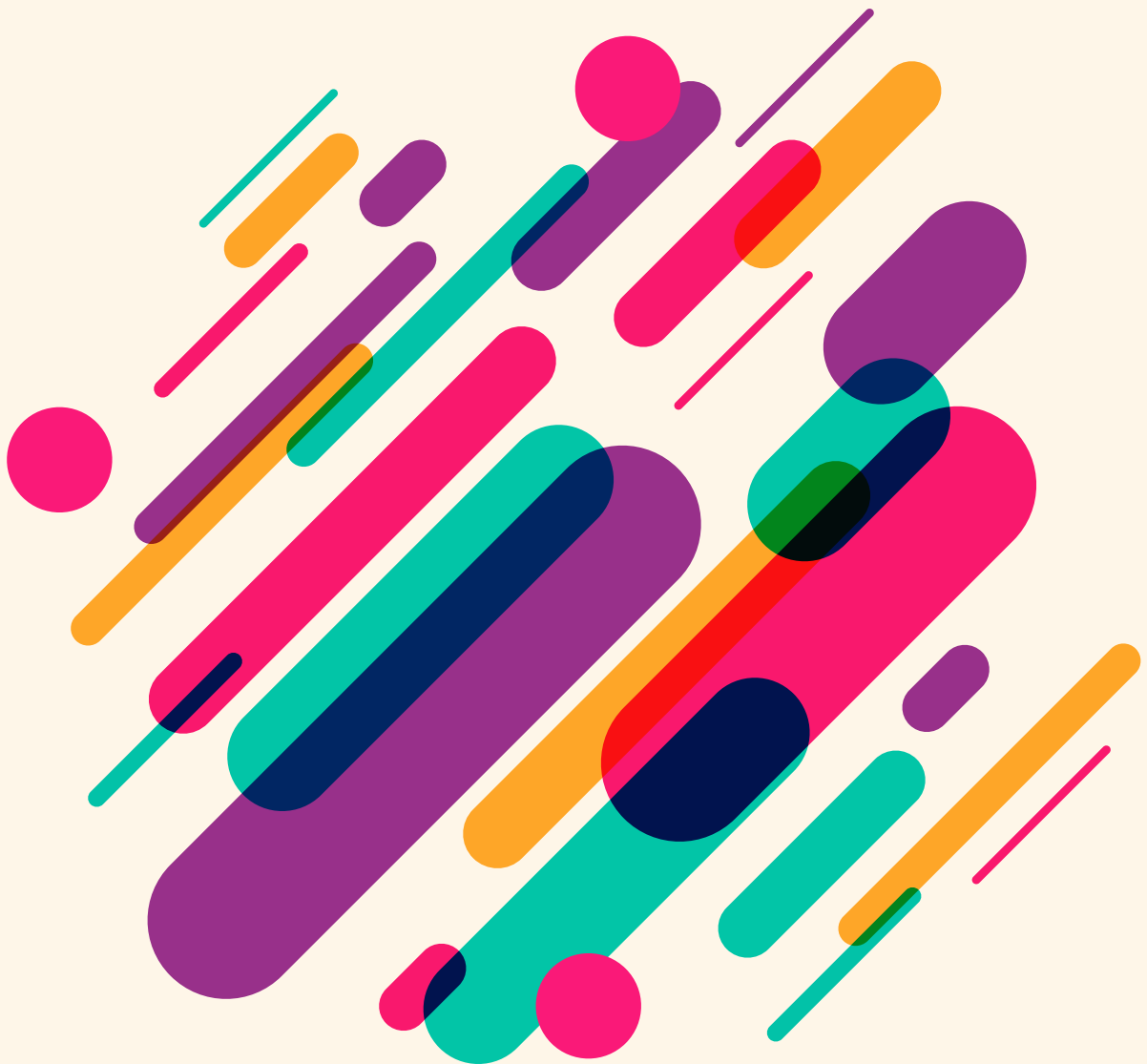




# Nutrition Research and Practice

pISSN 1976-1457  
eISSN 2005-6168

Vol. 17 · No. 6 · December 2023



## Contents

### Original Research

- 1043** *Cydonia oblonga* Miller fruit extract exerts an anti-obesity effect in 3T3-L1 adipocytes by activating the AMPK signaling pathway  
Hyun Sook Lee, Jae In Jung, Jung Soon Hwang, Myeong Oh Hwang, Eun Ji Kim
- 1056** Extracts of *Grifola frondosa* inhibit the MAPK signaling pathways involved in keratinocyte inflammation and ameliorate atopic dermatitis  
Eun-Ju Choi, Jin Kyeong Choi
- 1070** *Sanghuangporus sanghuang* extract inhibits the proliferation and invasion of lung cancer cells *in vitro* and *in vivo*  
Weike Wang, Jiling Song, Na Lu, Jing Yan, Guanping Chen
- 1084** Maternal betaine supplementation ameliorates fatty liver disease in offspring mice by inhibiting hepatic NLRP3 inflammasome activation  
Lun Li, Liuqiao Sun, Xiaoping Liang, Qian Ou, Xuying Tan, Fangyuan Li, Zhiwei Lai, Chenghe Ding, Hangjun Chen, Xinxue Yu, Qiongmei Wu, Jun Wei, Feng Wu, Lijun Wang
- 1099** Purple perilla frutescens extracts containing  $\alpha$ -asarone inhibit inflammatory atheroma formation and promote hepatic HDL cholesterol uptake in dyslipidemic apoE-deficient mice  
Sin-Hye Park, Young Eun Sim, Min-Kyung Kang, Dong Yeon Kim, Il-Jun Kang, Soon Sung Lim, Young-Hee Kang
- 1113** Aqueous extract of *Laurus nobilis* leaf accelerates the alcohol metabolism and prevents liver damage in single-ethanol binge rats  
Jae In Jung, Yeon-Jung Choi, Jinhak Kim, Kwang-Soo Baek, Eun Ji Kim
- 1128** Raw *Inonotus obliquus* polysaccharide counteracts Alzheimer's disease in a transgenic mouse model by activating the ubiquitin-proteasome system  
Shumin Wang, Kaiye Dong, Ji Zhang, Chaochao Chen, Hongyan Shuai, Xin Yu
- 1143** Association between body shape misperception and unhealthy eating behaviors among Korean adolescents  
Yejin Kim, Bomgyeol Kim, Vasuki Rajaguru, Sang Gyu Lee, Tae Hyun Kim
- 1155** Who has a high level of food literacy, and who does not?: a qualitative study of college students in South Korea  
Hyelim Yoo, Eunbin Jo, Hyeongyeong Lee, Eunji Ko, Eunjin Jang, Jiwon Sim, Sohyun Park

- 1170** Beliefs, self-efficacy, subjective norms, and eating behaviors according to the breakfast frequency among female university students in South Korea  
*Hye Jin Kim, Kyung Won Kim*
- 1185** Nutrition and health challenges among low-income families of young children in the post COVID-19 era: a qualitative study  
*Hyunjung Lee, Wilna Oldewage-Theron, Conrad Lyford, Stephanie Shine*
- 1201** Food contributing to fermentable oligosaccharide, disaccharide, monosaccharide, and polyols intake in Korean adults  
*Woori Na, Cheongmin Sohn*
- 1211** Food sources of zinc and nutritional status with usual dietary zinc intake in Korean toddlers and preschool children  
*SuJin Song, Jae Eun Shim*
- 1225** Association of milk and dairy product consumption with the incidence of cardio-cerebrovascular disease incidence in middle-aged and older Korean adults: a 16-year follow-up of the Korean Genome and Epidemiology Study  
*Yeseung Jeong, Kyung Won Lee, Hyekyeong Kim, Yuri Kim*
- 1238** The effects of dietary self-monitoring intervention on anthropometric and metabolic changes via a mobile application or paper-based diary: a randomized trial  
*Taiyue Jin, Gyumin Kang, Sihan Song, Heejin Lee, Yang Chen, Sung-Eun Kim, Mal-Soon Shin, Youngja H Park, Jung Eun Lee*
- 1255** Classification and prediction of the effects of nutritional intake on diabetes mellitus using artificial neural network sensitivity analysis: 7th Korea National Health and Nutrition Examination Survey  
*Kyungjin Chang, Songmin Yoo, Simyeol Lee*