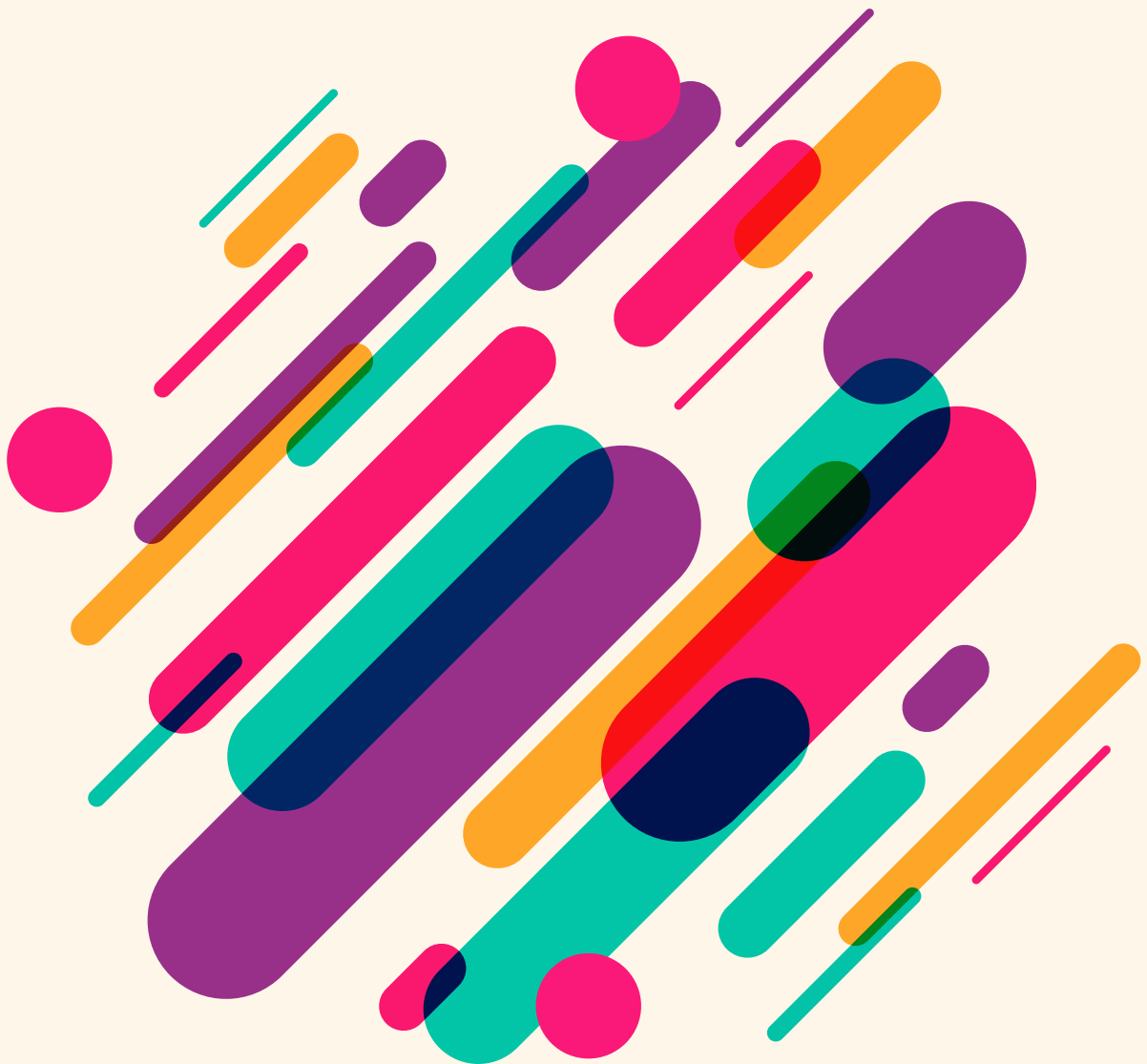




Nutrition Research and Practice

pISSN 1976-1457
eISSN 2005-6168

Vol. 17 · No. 5 · October 2023



Contents

Original Research

- 827** Effects of *Pogonatherum paniceum* (Lamk) Hack extract on anti- mitochondrial DNA mediated inflammation by attenuating *Tlr9* expression in LPS-induced macrophages
Rungthip Thongboontho, Kanoktip Petcharat, Narongsuk Munkong, Chakkraphong Khonthun, Atirada Boondech, Kanokkarn Phromnoi, Arthid Thim-uam
- 844** Antimetastatic effect of fucoidan against non-small cell lung cancer by suppressing non-receptor tyrosine kinase and extracellular signal-related kinase pathway
Nareenath Muneerungsee, Supita Tanasawet, Wanida Sukketsiri
- 855** Protective effect of *Lycium barbarum* leaf extracts on atopic dermatitis: *in vitro* and *in vivo* studies
Han Sol Lee, Eun Young Bae, Sun Yung Ly
- 870** *Mentha canadensis* attenuates adiposity and hepatic steatosis in high-fat diet-induced obese mice
Youngji Han, Ji-Young Choi, Eun-Young Kwon
- 883** Probiotic supplementation has sex-dependent effects on immune responses in association with the gut microbiota in community-dwelling older adults: a randomized, double-blind, placebo-controlled, multicenter trial
Chong-Su Kim, Min Ho Jung, Eun Young Choi, Dong-Mi Shin
- 899** Neuroprotective effects of hesperetin on H₂O₂-induced damage in neuroblastoma SH-SY5Y cells
Ha-Rin Moon, Jung-Mi Yun
- 917** Peanut sprout tea extract inhibits lung metastasis of 4T1 murine mammary carcinoma cells by suppressing the crosstalk between cancer cells and macrophages in BALB/c mice
Jae In Jung, Hyun Sook Lee, Jaehak Lee, Eun Ji Kim
- 934** Newly developed care food enhances grip strength in older adults with dysphagia: a preliminary study
Hyejin Han, Yoonhee Park, Hyeji Kwon, Yeseung Jeong, Soyoung Joo, Mi Sook Cho, Ju Yeon Park, Hee-Won Jung, Yuri Kim
- 945** The level of food literacy and its association with food intake and obesity status among Seoul citizens: results from Seoul Food Survey 2021
Hyeelim Yoo, Eunbin Jo, Hyeongyeong Lee, Eunji Ko, Eunjin Jang, Jiwon Sim, Kirang Kim, Sohyun Park

- 959** Association between diet quality and untreated dental caries: results from the Korea National Health and Nutrition Examination Survey
Seon-Ju Sim, Ja-Young Moon, Hye-Sun Shin
- 969** Association between plant protein intake and grip strength in Koreans aged 50 years or older: Korea National Health and Nutrition Examination Survey 2016–2018
Sook-Hyun Jun, Jung Woo Lee, Woo-Kyoung Shin, Seung-Yeon Lee, Yookyung Kim
- 984** Gender differences in the association between food costs and obesity in Korean adults: an analysis of a population-based cohort
Soim Park, Jihye Kim
- 997** Associations of dietary vitamin A and C intake with asthma, allergic rhinitis, and allergic respiratory diseases
Carolina García-García, Minju Kim, Inkyung Baik
- 1007** Can tailored home-delivered meal services alleviate self-rated frailty of the low-income older adults in Korea?
Junghyun Kim, Hyeja Chang
- 1019** Effects of campus dining sustainable practices on consumers' perception and behavioral intention in the United States
Borham Yoon, Kyungyul Jun
- 1028** What is on plates for school meals: focusing on animal- vs. plant-based protein foods
So-Young Kim, Meeyoung Kim