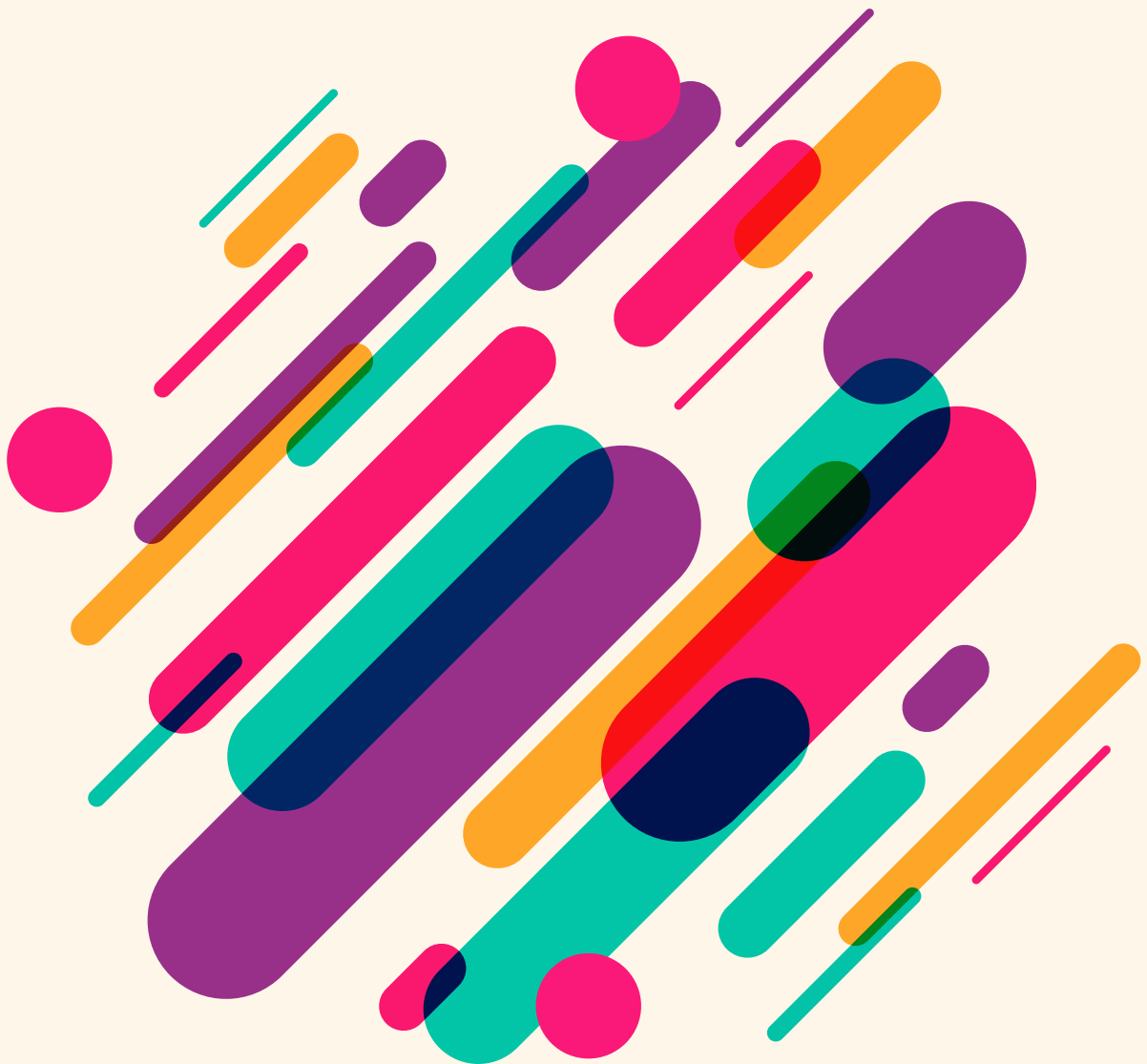




Nutrition Research and Practice

pISSN 1976-1457
eISSN 2005-6168

Vol. 17 · No. 4 · August 2023



Contents

Review

- 597** Modulation of DNA methylation by one-carbon metabolism: a milestone for healthy aging
Sang-Woon Choi, Simonetta Friso

Original Research

- 616** IPA and its precursors differently modulate the proliferation, differentiation, and integrity of intestinal epithelial cells
Shámila Ismael, Catarina Rodrigues, Gilberto Maia Santos, Inês Castela, Inês Barreiros-Mota, Maria João Almeida, Conceição Calhau, Ana Faria, João R. Araújo
- 631** Effects of coffee intake on airway hypersensitivity and immunomodulation: an *in vivo* murine study
Ying-Chi Wong, Wen-Cheng Hsu, Tzee-Chung Wu, Ching-Feng Huang
- 641** Protective effects of red orange (*Citrus sinensis* [L.] Osbeck [Rutaceae]) extract against UVA-B radiation-induced photoaging in Skh:HR-2 mice
Yoon Hee Kim, Cho Young Lim, Jae In Jung, Tae Young Kim, Eun Ji Kim
- 660** Resveratrol promotes mitochondrial energy metabolism in exercise-induced fatigued rats
Xujia Lou, Yulong Hu, Rong Ruan, Qiguan Jin
- 670** Anti-fatigue effect of tormentic acid through alleviating oxidative stress and energy metabolism-modulating property in C2C12 cells and animal models
Ho-Geun Kang, Jin-Ho Lim, Hee-Yun Kim, Hyunyong Kim, Hyung-Min Kim, Hyun-Ja Jeong
- 682** *In-silico* annotation of the chemical composition of Tibetan tea and its mechanism on antioxidant and lipid-lowering in mice
Ning Wang, Linman Li, Puyu Zhang, Muhammad Aamer Mehmood, Chaohua Lan, Tian Gan, Zaixin Li, Zhi Zhang, Kewei Xu, Shan Mo, Gang Xia, Tao Wu, Hui Zhu
- 698** The effects of pomegranate peel added bread on anthropometric measurements, metabolic and oxidative parameters in individuals with type 2 diabetes: a double-blind, randomized, placebo-controlled study
Özlem Özpak Akkuş, Uğurcan Metin, Zeynep Çamlık
- 717** Early childhood eating behaviors associated with risk of overweight and its socio-ecological determinants in Korean preschool children
Yeri Kim, Jiye Kim, Bomi Lee, Seungyoun Jung, Seo-Jin Chung, Hyekyeong Kim, Nana Shin, Yuri Kim

- 735** Relationship between metabolic syndrome and intake of ultra-processed foods in Korean adults: based on 6th and 7th Korea National Health and Nutrition Examination Survey (2013–2018)
Chaeryeon Kim, Woori Na, Seunghee Choi, Seo Hyeon Hwang, Cheongmin Sohn
- 747** Development of a semi-quantitative food frequency questionnaire for dietary intake of elementary school children: data from the Seventh Korea National Health and Nutrition Examination Survey
Minji Jung, Eunhee Ha, Oran Kwon, Hyesook Kim
- 762** Effect of a Mediterranean-style diet on the exercise performance and lactate elimination on adolescent athletes
Gizem Helvacı, Asli Uçar, Mehmet Mesut Çelebi, Haydar Çetinkaya, Ayşe Zülal Gündüz
- 780** Famine exposure in early life and type 2 diabetes in adulthood: findings from prospective studies in China
Feng Ning, Jing Zhao, Lei Zhang, Weijing Wang, Xiaohui Sun, Xin Song, Yanlei Zhang, Hualei Xin, Weiguo Gao, Ruqin Gao, Dongfeng Zhang, Zengchang Pang
- 789** Association of coffee consumption with type 2 diabetes and glyceemic traits: a Mendelian randomization study
Hyun Jeong Cho, Akinkunmi Paul Okekunle, Ga-Eun Yie, Jiyoung Youn, Moonil Kang, Taiyue Jin, Joonhon Sung, Jung Eun Lee
- 803** Science electives in high school will improve nutrition knowledge but not enough to make accurate decisions
Takahiro Mitsui, Susumu Yamamoto, Morito Endo
- 812** Importance-performance analysis of sodium reduction practices by school nutrition teachers and dietitians in the Republic of Korea
Youngmi Lee, Sooyoun Kwon, Meeyoung Kim

Erratum

- 826** Erratum: Evaluation of medical nutrition therapy using the food-based index of dietary inflammatory potential (FBDI) in diabetes mellitus patients
Woori Na, Tae Yang Yu, Cheongmin Sohn