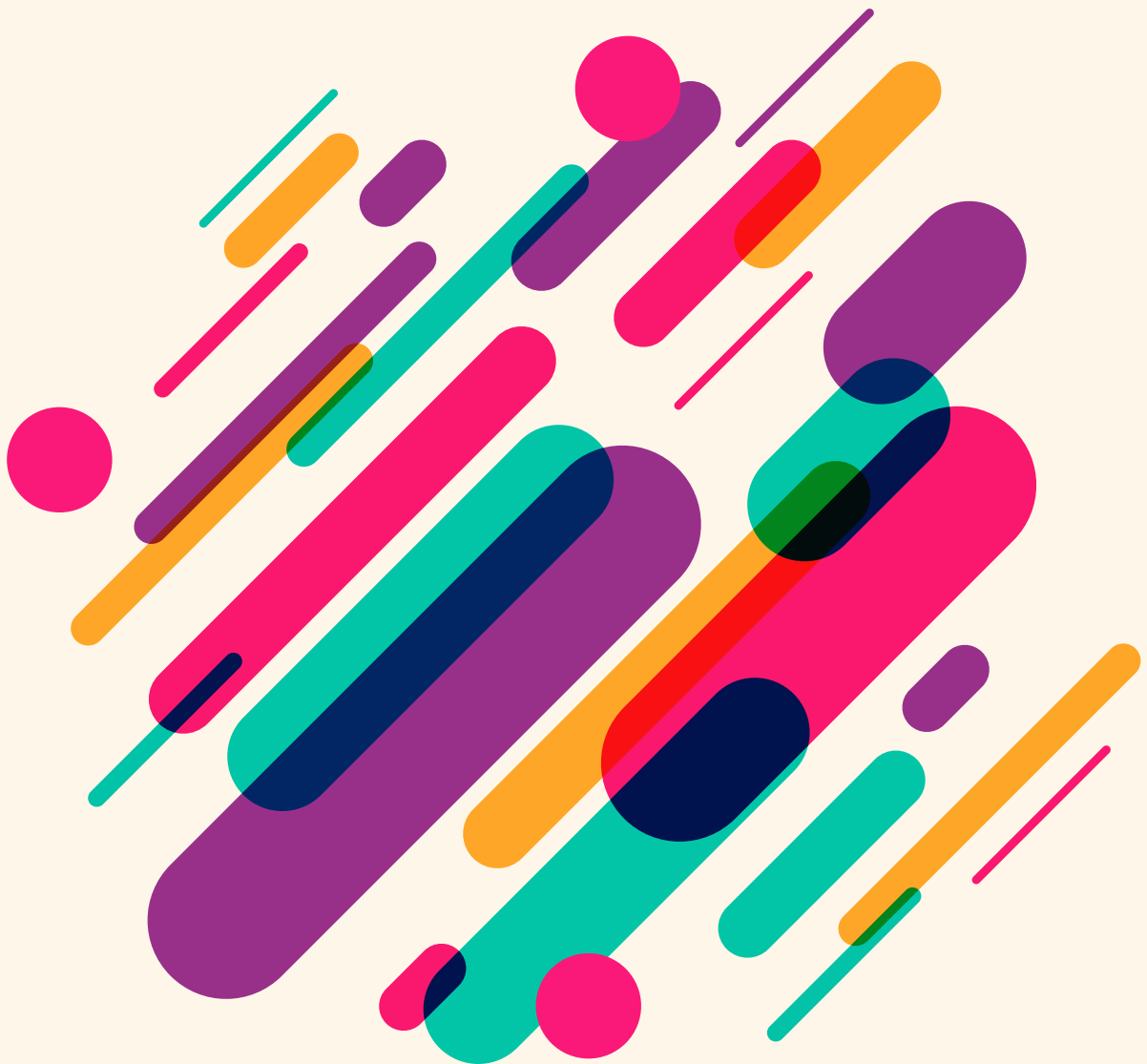




Nutrition Research and Practice

pISSN 1976-1457
eISSN 2005-6168

Vol. 17 · No. 3 · June 2023



Contents

Review

- 387** Effects of dietary salt intake restriction on blood glucose levels: a meta-analysis of crossover study
Yong Shen, Yujie Shi, Jiajing Cui, Haitao He, Shuping Ren

Original Research

- 397** Role of heat shock protein 70 in regulation of anti-inflammatory response to curcumin in 3T3-L1 adipocytes
Sunhye Shin, Kolapo M. Ajuwon
- 408** Dopamine and serotonin alterations by *Hizikia fusiformis* extracts under *in vitro* cortical primary neuronal cell cultures
Jae-Won Jung, Ye-Jin Kim, Jae Sue Choi, Yukiori Goto, Young-A Lee
- 421** Highly water-soluble diacetyl chrysin ameliorates diabetes-associated renal fibrosis and retinal microvascular abnormality in db/db mice
Young-Hee Kang, Sin-Hye Park, Young Eun Sim, Moon-Sik Oh, Hong Won Suh, Jae-Yong Lee, Soon Sung Lim
- 438** Quercetin inhibits body weight gain and adipogenesis via matrix metalloproteinases in mice fed a high-fat diet
SeungMin Song, Ae Wha Ha, WooKyoung Kim
- 451** Estimated dietary vitamin D intake and major vitamin D food sources of Koreans: based on the Korea National Health and Nutrition Examination Survey 2016–2019
Ki Nam Kim, Jung-Sug Lee, Jee-Seon Shim, Mi Ock Yoon, Hyun Sook Lee
- 464** Resting energy expenditure in Korean type 2 diabetes patients: comparison between measured and predicted values
Ji-Sook Park, Sung-Rae Cho, Jung-Eun Yim
- 475** Effect of preoperative immunonutrition on fecal microbiota in colon cancer patients: a secondary analysis of a randomized controlled trial
Soo Young Lee, Jaram Lee, Hyeong-min Park, Chang Hyun Kim, Hyeong Rok Kim
- 487** The effects of cigarette smoking and alcohol drinking on salty taste preferences based on Korean Community Health Survey data
Jian Ma, Yeon-Kyung Lee

- 503** Comparison of participant and non-participant perceptions on healthy restaurant for sodium reduction: a qualitative study
Jeehee Pyo, Mina Lee, Yunjeong Jang, Minsu Ock
- 516** Sodium intake trend and current intake level by meal provision place among the citizens of Seoul
Ye-Ji Han, Eun-Hee Jang, Seungmin Lee
- 529** Evaluation of medical nutrition therapy using the food-based index of dietary inflammatory potential (FBDI) in diabetes mellitus patients
Woori Na, Tae Yang Yu, Cheongmin Sohn
- 541** Analysis of the factors that influence preschool children eating behavior by applying the health belief model: Seoul and Gyeonggi Province
Sung-Mi Cha, Soo-Youn Kim
- 553** Association between diet quality and type of meal companion: the 2013–2015 Korea National Health and Nutrition Examination Survey (KNHANES)
Yeong Sook Yoon, Sang Woo Oh
- 565** Factors affecting the willingness to pay extra for safe food
MinSook Kyung, DongYoung Kim, Sunny Ham
- 583** Korean consumers' use and concerns about food delivery service
Jong-Youn Rha, Youngwon Nam, Jihyun Yoon, Bohan Lee