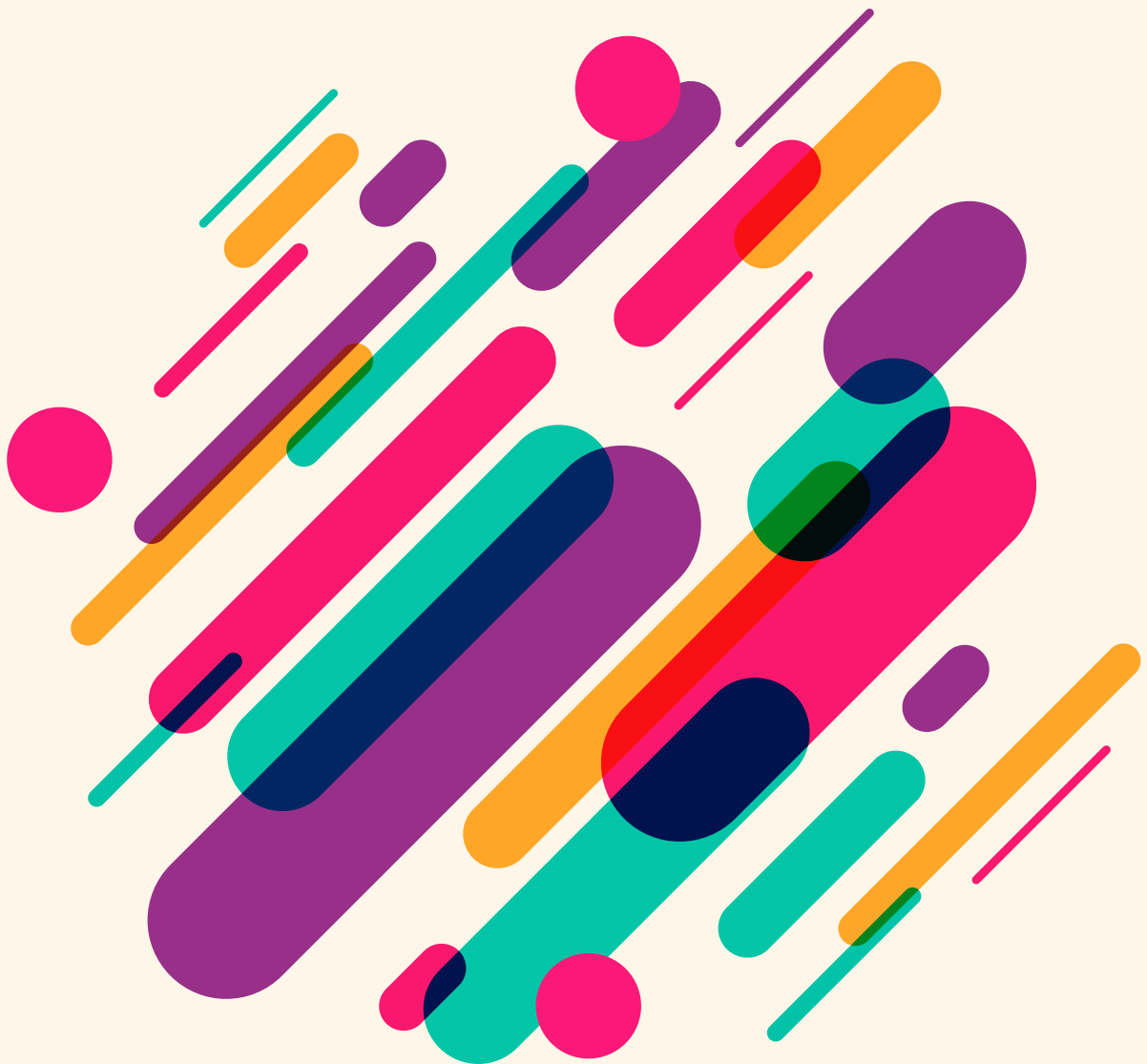




# Nutrition Research and Practice

pISSN 1976-1457  
eISSN 2005-6168

Vol. 17 · No. 2 · April 2023



## Contents

### Review

- 175** The association between dietary sodium intake and obesity in adults by sodium intake assessment methods: a review of systematic reviews and re-meta-analysis  
Jounghee Lee, Cheongmin Sohn, Oh-Yoen Kim, Young-Min Lee, Mi Ock Yoon, Myoungsook Lee

### Original Research

- 192** The effect of curcumin on blood pressure and cognitive impairment in spontaneously hypertensive rats  
Ji Young Lim, Wookyong Kim, Ae Wha Ha
- 206** Immune-enhancing effect of hydrolyzed and fermented *Platycodon grandiflorum* extract in cyclophosphamide-induced immunosuppressed BALB/c mice  
Hyun Sook Lee, So Mi Kim, Jae In Jung, Jihoon Lim, Moonjea Woo, Eun Ji Kim
- 218** In-hospital malnutrition among adult patients in a national referral hospital in Indonesia  
Dyah Purnamasari, Nur Chandra Bunawan, Dwi Suseno, Ikhwan Rinaldi, Drupadi HS Dillon
- 228** Cocoa: a functional food that decreases insulin resistance and oxidative damage in young adults with class II obesity  
José Arnold González-Garrido, José Rubén García-Sánchez, Carlos Javier López-Victorio, Adelma Escobar-Ramírez, Ivonne María Olivares-Corichi
- 241** Effect of diabetes-specific oral nutritional supplements with allulose on weight and glycemic profiles in overweight or obese type 2 diabetic patients  
Jihye Tak, Minkyung Bok, Hyunkyung Rho, Ju Hyun Park, Yunsook Lim, Suk Chon, Hyunjung Lim
- 257** Dietary zinc intake and sources among Koreans: findings from the Korea National Health and Nutrition Examination Survey 2016–2019  
Jee-Seon Shim, Ki Nam Kim, Jung-Sug Lee, Mi Ock Yoon, Hyun Sook Lee
- 269** Food security and diet quality among urban poor adolescents in Kuala Lumpur, Malaysia  
Janice Ee Fang Tay, Satvinder Kaur, Wui Wui Tham, Wan Ying Gan, Nik Norasma Che Ya, Choon Hui Tan, Serene En Hui Tung
- 284** Comparison between 24-hour diet recall and 24-hour urine collection for estimating sodium and potassium intakes and their ratio among Korean adults  
Taisun Hyun, Mi-Kyeong Choi, Young-Ran Heo, Heekyong Ro, Young-Hee Han, Yeon-Kyung Lee

- 297** Utilization of nutrition labels and related factors among patients with diabetes in Korea  
*So-Jung Lee, Mi Ah Han, Jong Park, So Yeon Ryu*
- 307** Feeding characteristics in infancy affect fruit and vegetable consumption and dietary variety in early childhood  
*Kyoung-Nam Kim, Moon-Kyung Shin*
- 316** The association of the Korean Healthy Eating Index with chronic conditions in middle-aged single-person households  
*EunJung Lee, Ji-Myung Kim*
- 330** Mediating effect of negative perceived stress on the relationship between premenstrual syndrome and emotional eating  
*Yesol Um, Jisun Lee*
- 341** Dietary supplement use and its related factors among Chinese international and Korean college students in South Korea  
*Linxi Huang, Hye-Jong Yoo, Satoko Abe, Jihyun Yoon*
- 356** Causal relationship among quality factors, emotional responses, and satisfaction of school food service in Henan province, China  
*Miaomiao Li, Young Eun Lee*

## Research Note

- 371** Role of soy lecithin combined with soy isoflavone on cerebral blood flow in rats of cognitive impairment and the primary screening of its optimum combination  
*Hongrui Li, Xianyun Wang, Xiaoying Li, Xueyang Zhou, Xuan Wang, Tiantian Li, Rong Xiao, Yuandi Xi*