

Accepted refereed manuscript of:

Cahir C, Guinan E, Dombrowski SU, Sharp L & Bennett K (2015) Identifying the determinants of adjuvant hormonal therapy medication taking behaviour in women with stages I-III breast cancer: A systematic review and meta-analysis, *Patient Education and Counseling*, 98 (12), pp. 1524-1539.

DOI: [10.1016/j.pec.2015.05.013](https://doi.org/10.1016/j.pec.2015.05.013)

© 2015, Elsevier. Licensed under the Creative Commons Attribution-NonCommercial-NoDerivatives 4.0 International
<http://creativecommons.org/licenses/by-nc-nd/4.0/>

Identifying the determinants of adjuvant hormonal therapy medication taking behaviour in women with stage I-III breast cancer: a systematic review and meta-analysis

Caitriona Cahir¹, Emer Guinan², Stephan U Dombrowski³, Linda Sharp⁴, Kathleen Bennett⁵

Running head: Adjuvant hormonal therapy medication taking behaviour

Key words: Breast cancer, hormonal therapy, medication taking behaviour, Theoretical Domains Framework

¹ Department of Pharmacology & Therapeutics, Trinity College Dublin, Ireland and Economic and Social Research Institute, Dublin 2, Ireland

²School of Physiotherapy, Trinity College Dublin, Ireland

³Division of Psychology, University of Stirling, Scotland

⁴ National Cancer Registry Ireland, Cork, Ireland

⁵Department of Pharmacology & Therapeutics, Trinity College Dublin, Ireland

Dr Caitriona Cahir (CC), Research Fellow

Dr Emer Guinan (EG), Research Fellow

Dr Stephan U Dombrowski (SD), Lecturer in Health Psychology; HCPC registered Health Psychologist

Professor Linda Sharp (LS), Adjunct Professor in Epidemiology

Dr Kathleen Bennett (KB), Associate Professor in Pharmacoepidemiology

Funding: CC is Health Research Board, Ireland (HRB) ICE fellow (ICE/2011/9)

Correspondence to: Dr Caitriona Cahir

Economic and Social Research Institute

Whitaker Square

Sir John Rogerson's Quay

Dublin 2

Ireland

Ph: 00 353 1 8632000

Fax: 00 353 1 4539033

Email: caitriona.cahir@esri.ie

Competing interests: All authors have nothing to declare.

Word Count: 3,997

Total number of figures: 2

Total number of tables: 4

Abstract (200 words)

Objective

This systematic review and meta-analysis aimed to identify the modifiable determinants of adjuvant hormonal therapy medication taking behaviour (MTB) in women with stage I-III breast cancer in clinical practice settings.

Methods

We searched PubMed, EMBASE, PsycINFO and CINAHL for articles investigating determinants of adjuvant hormonal therapy. Potentially modifiable determinants were identified and mapped to the 14 domains of the Theoretical Domains Framework (TDF), an integrative framework of theories of behavioural change. Meta-analysis was used to calculate pooled odds ratios for selected determinants.

Results

Potentially modifiable determinants were identified in 42 studies and mapped to 9 TDF domains. In meta-analysis treatment side-effects (**Domain: *Beliefs about Capabilities***) and follow-up care with a general practitioner (vs. oncologist) (*Social Influences*) were significantly negatively associated with persistence ($p < 0.001$) and number of medications (*Behaviour Regulation*) was significantly positively associated with persistence ($p < 0.003$). Studies did not examine several domains (including *Beliefs about Consequences, Intentions, Goals, Social Identity, Emotion* and *Knowledge*) which have been reported to influence MTB in other disease groups.

Conclusions

There is some evidence that the domains *Beliefs about Capabilities*, *Behaviour Regulation* and *Social Influences* influence hormonal therapy MTB.

Practice Implications

Further research is needed to develop effective interventions to improve hormonal therapy MTB.

Highlights

- This review identified modifiable determinants of hormonal therapy **medication taking behaviour** (MTB)
- Modifiable determinants were mapped to the Theoretical Domains Framework
- *Beliefs about Capabilities*, *Behaviour Regulation* and *Social Influences* influence MTB
- Several domains reported to influence MTB in other disease groups were not examined

1. Introduction

Breast cancer survival in women has increased due to improvements in early diagnosis and the use of adjuvant hormonal therapy.(1) **Five to ten years of adjuvant hormonal treatment has been shown to reduce the relative breast cancer recurrence risk by up to 50% in women with hormone responsive early breast cancer.**(2, 3) Despite the proven clinical efficacy of adjuvant hormonal therapy many women do not take their treatment as prescribed. Medication taking behaviour (MTB) can be defined in terms of two distinct variables; persistence which is continuing the treatment for the prescribed duration of time and adherence which is acting in accordance with the prescribed interval and dosage of the treatment.(4) Non-persistence to hormonal therapy ranges from 13.6% at 1 year to 40.9% at 5 years in routine clinical settings, while adherence ranges from 79.6% at 1 year to 68.3% at 5 years.(5, 6) Non-persistence and non-adherence to hormonal therapy have been associated with increased risks of early breast cancer recurrence and death.(7, 8)

MTB is influenced by a number of factors, including socio-economic factors, medical condition-related factors, therapy and treatment-related factors, health system-related factors and patient-related factors.(9) A systematic review published in 2012 reported that, despite the high prevalence of non-adherence and non-persistence with hormonal therapy, little is known about the factors associated with hormonal therapy MTB in women with breast cancer.(5) In particular, there is a critical need to identify potentially modifiable determinants that influence hormonal therapy MTB in order to develop behavioural interventions to improve it; no previous reviews have focussed on identifying the potentially modifiable determinants.(5) The aims of this systematic review were to; (i) identify the potentially modifiable determinants of adjuvant hormonal therapy MTB in women with stage I-III breast cancer in routine clinical practice settings and; (ii) to map these potentially modifiable

determinants to the Theoretical Domains Framework (TDF). The TDF is an integrative framework of multiple psychological theories of behaviour change designed to assess potential influences on individuals' behaviours and inform intervention design.(10-12)
The TDF has been applied in systematic reviews to identify the barriers and facilitators to behaviour change in clinical practice and develop theory-informed behaviour change interventions.(13-15)

2. Methods

2.1. *Eligibility, information sources and search strategies*

The study was conducted and reported in accordance with the Preferred Reporting of Systematic Reviews and Meta-Analysis (PRISMA) Statement guidelines.(16) An electronic database search of PubMed (via National Centre for Biotechnology Information), EMBASE (via Elsevier), PsycINFO (via EBSCO) and CINAHL (via EBSCO) was undertaken from database start to 31st March 2014 to identify studies that assessed determinants of adjuvant hormonal therapy MTB in women with stage I-III breast cancer in a clinical practice setting. Studies were considered eligible for review if they were; (i) published in a peer reviewed journal before 31st March 2014; (ii) reported data from a primary study (not a review, editorial or commentary); (iii) included female breast cancer patients who were prescribed adjuvant hormonal therapy; (iv) measured or assessed the determinants of adjuvant hormonal therapy MTB in clinical practice settings and; (v) were observational studies or randomised controlled trials (RCTs). Studies that examined adjuvant hormonal therapy MTB in women with ductal carcinoma in situ (DCIS) or in women with metastatic disease or exclusively after the initial 5 year period or after therapy switches or in clinical trials were excluded.

MTB included persistence, adherence and initiation of adjuvant hormonal therapy.

Persistence was defined as continuous use of adjuvant hormonal therapy, with few gaps in treatment or in prescription refills. Adherence was defined as the degree of conformity to the prescribed dosage and daily frequency of the treatment.(4) Initiation was defined as whether or not the patient commenced their adjuvant hormonal therapy the first time it was prescribed.(17) Persistence, adherence and initiation could be measured objectively or through self-report or self-assessment. Determinants included socio-economic factors (e.g. age, education), medical condition factors (e.g. tumour grade), therapy and treatment factors

(e.g. receipt of chemotherapy), health system factors (e.g. primary provider an oncologist) and patient factors (e.g. beliefs about treatment, doctor-patient communication). Adjuvant hormonal therapy included both selective estrogen-receptor modulators (e.g. tamoxifen) and aromatase inhibitors (e.g. letrozole). MeSH heading and text word searches were conducted as appropriate, with wildcards used to increase sensitivity. The search terms (non) complian*, (non) adherence, persist*, discontinu* were combined with various terms for hormonal therapy (e.g. antineoplastic agents, aromatase inhibitors, tamoxifen) according to the individual database requirements (Supplementary Table 1). The reference lists of eligible studies were scanned for additional studies.

2.2. *Study selection*

The titles and abstracts of all potentially eligible articles were reviewed independently by two reviewers (CC, EG) to determine their eligibility. Each reviewer coded the abstracts as; (i) eligible; (ii) possibly eligible or; (iii) not eligible. Abstracts considered eligible by both reviewers were included for further review. Abstracts identified as not eligible were excluded. Abstracts considered as possibly eligible by either reviewer, and those considered as eligible by one reviewer only, were discussed until consensus was reached (approximately 3% of all abstracts were discussed).

2.3. *Data extraction*

The full text articles for abstracts identified as eligible were reviewed independently by the two reviewers (CC, EG). The following data were extracted from each: author, year of publication, country, participant characteristics, eligibility criteria, time period, type of

adjuvant hormonal therapy, measures of MTB and measures of determinants of adjuvant hormonal therapy MTB (Supplementary Table 2).

2.4. *Quality assessment*

The Downs and Black scale was used to critically assess and appraise all eligible studies in a standardised way, including the measurement of MTB, study methodology and statistical analysis. The scale includes questions about: (i) study quality; (ii) external validity; (iii) study bias; (iv) confounding and selection bias; and (v) power of the study.(18) The scale was modified to include items from the International Society of Pharmacoeconomics and Outcomes Research (ISPOR) checklist for studies of medication compliance and persistence that use administrative databases.(19) Each reviewer independently recorded the extent to which the studies adhered to the checklist and any methodological issues that emerged.

2.5. *Mapping determinants to the TDF*

The TDF was developed by Michie *et al.* in 2005 to simplify and integrate a number of behaviour change theories to provide a comprehensive assessment of behavioural determinants to inform systematic intervention design. These authors mapped 128 explanatory constructs from 33 theories and identified 12 discrete domains of behaviour change synthesised into a single framework.(10, 12) The authors identified theories and theoretical constructs related to behaviour change and then grouped these constructs into overarching theoretical domains. Each domain is defined as ‘a group of related theoretical constructs’.(10) The TDF has recently been validated and refined to include 14 domains (*Knowledge, Skills, Social and Professional Role and Identity, Beliefs about Capabilities, Optimism, Beliefs about Consequences, Reinforcement, Intention, Goals, Memory, Attention*

and Decision Processes, Environmental Context and Resources, Social Influences, Emotion and Behaviour Regulation).(11) In this review, the modifiable determinants of adjuvant hormonal therapy MTB abstracted from the eligible papers were categorised into the 14 domains by one reviewer (CC).(11) The categorisation process was independently reviewed by a second author (SD) with expertise in behavioural change theory. Categorisation was undertaken in a two-stage process. Firstly, if applicable the reported determinants were allocated to the domains suggested in the published frameworks.(10, 11) Secondly, some determinants were interpreted as proxy measures for a particular domain and allocated to that domain e.g. co-morbidities and number of medications were considered to be a proxy for behavioural regulation as managing a medication regime draws on an individuals' regulatory capacity. Studies have shown that patients who are medication naïve have a higher risk of medication discontinuation.(20, 21) Similarly treatment side-effects was allocated to the domain *Beliefs about Capabilities* as patient expectations about their treatment, as well as coping skills and emotional representations of their illness have been found to predict the incidence of treatment side-effects in breast cancer.(22)

Domains with more than two studies examining the association between a particular determinant and MTB, and where the studies were deemed sufficiently homogenous (e.g. similar in design, population, measure of MTB) for combination of results to be meaningful, were identified for potential meta-analysis. For these domains and their determinants, additional data extraction was undertaken independently by two reviewers (CC, KB); data was abstracted on statistical results of measures of association and also the details of any covariates adjusted for in the analysis. Authors of studies were contacted and asked to provide additional data or conduct further analysis where necessary.

2.6. *Data synthesis*

Fixed and random effects models were used to calculate pooled odds ratios (ORs) for the association between the potentially modifiable determinants and the various measures of persistence, adherence and initiation. Tests for heterogeneity were conducted and the I^2 statistic was calculated to quantify the degree of heterogeneity between studies.(23) An I^2 value of 0% indicates no observed heterogeneity, values between 25%-50% indicate low heterogeneity and values between 50%-75% indicate moderate heterogeneity and values \geq 75% indicate high heterogeneity.(24) Overall estimates of the association between the determinants and MTB are presented in forest plots (Figure 2). All statistical analysis was performed using STATA 11.0 (Stata, College Station, TX).

3. Results

3.1. *Included studies*

Database searches identified 767 potentially eligible studies, of which 45 met the inclusion criteria (Figure 1). In total 28 studies considered adherence to adjuvant hormonal therapy, 29 studies considered persistence and 3 studies considered initiation. Nineteen studies measured adherence to adjuvant hormonal therapy in administrative or prescription claims data or hospital/medical databases using a medication possession ratio (MPR) of $\geq 80\%$.(25-43) The MPR was generally calculated as the sum of the days supplied divided by the individual participant study period with a supply of 80% considered to be adherent.(44) Nine studies measured adherence using self-report measures.(34, 36, 45-51) Two studies used a combination of both the MPR and self-report measures.(34, 36) Two studies measured adherence using a medication event monitoring system (MEMS).(52, 53) Seventeen studies measured persistence using administrative or prescription claims data or hospital/medical databases. Persistence was generally defined as continuous use of adjuvant hormonal therapy with minimum treatment gaps ranging from 45 to 180 days.(26, 29-31, 33, 36, 38, 39, 42, 43, 54-60) Eleven studies measured self-reported (non-)persistence (discontinuing treatment) (47, 49, 61-69) and one study used medical chart review.(70) The three studies of initiation of hormonal therapy were based on self-report.(54, 66, 68)

3.2. *Quality assessment*

The majority of studies used standard methodology (e.g. MPR, treatment gaps, self-report) for measuring adherence, persistence and hormonal therapy initiation. No studies reported how anomalous values of MPR were accounted for in their analysis e.g. $MPR > 100\%$ or negative treatment gaps where patients may have been “hyper compliant/adherent” with their

treatment.(19) Studies differed in their choices of measures of determinants and covariates and some studies did not adjust for covariates in their analysis.(37, 46, 59) Some studies used selected patient groups (e.g. ≥ 70 years) and findings may not be generalisable to the general breast cancer population.(25, 42, 53)

3.3. *Mapping determinants to the TDF*

The determinants of hormonal therapy MTB studied included socio-demographic, diagnostic, clinical, treatment, health system and psychosocial factors (Supplementary Table 2).

Potentially modifiable determinants were identified in 42 of the 45 studies; these mapped to 9 of the possible 14 TDF domains (Table 1). No studies investigated determinants in the domains *Skills*, *Optimism*, *Reinforcement*, *Intentions* and *Goals*. Determinants were most frequently examined in the domains *Social Influences* (26 studies), *Behaviour Regulation* (25 studies), *Beliefs about Capabilities* (13 studies), *Emotion* (11 studies) and *Environmental Context and Resources* (11 studies). Fewer studies investigated modifiable determinants within the domains *Beliefs about Consequences* (8 studies), *Knowledge* (5 studies), *Memory, Attention and Decision Making* (5 studies) and *Social Identity* (4 studies) (Table 1).

The majority of the modifiable determinants within each domain had inconsistent or mixed associations with hormonal MTB (i.e. they were positively and negatively associated with MTB or unrelated) (Table 1). Only three determinants were identified for further investigation in meta-analysis; treatment side-effects (*Beliefs about Capabilities*), number of prescriptions- managing medication (*Behaviour Regulation*) and follow-up care- GP vs. oncologist (*Social Influences*). The studies concerning these three determinants were considered sufficiently homogenous for the combination of results to be meaningful.

3.4. *Beliefs about Capabilities- Treatment side-effects*

Ten studies examined the association between treatment side-effects and hormonal therapy MTB (Table 2). Three studies reported a negative association between treatment side-effects and adherence to hormonal therapy (36, 45, 50) and four studies a negative association with persistence with hormonal therapy (61-63, 65, 67). Two studies reported no association between treatment side-effects and hormonal therapy adherence (34, 52) and one study no association with persistence.(64) Data were pooled for meta-analysis from two adherence studies and two persistence studies (Figure 2).(36, 45, 63, 65) Women who reported side-effects were significantly more likely not to persist with hormonal therapy (OR =5.73, 95% confidence intervals (CI) 3.87, 8.47, $p<0.001$). They were also less likely to adhere (OR= 1.98, 95% CI 0.56, 0.71) but there was considerable heterogeneity ($I^2=78.6%$) among the studies, with differences in study populations and follow up periods.(Figure 2)

3.5. *Behaviour regulation- Number of prescription medications*

Thirteen studies examined the association between number of prescription medications and hormonal therapy MTB.(Table 3) Six studies reported no association between number of medications and adherence to hormonal therapy (29, 33, 35, 37, 47, 50) and two studies no association with persistence.(33, 56) Seven studies reported a positive association between number of medications and persistence with hormonal therapy.(29, 42, 43, 60, 61, 64, 68) Data were pooled for meta-analysis from two adherence studies and two persistence studies (Figure 2).(33, 35, 61, 64) Women who were prescribed a greater number of medications were significantly more likely to persist with their hormonal therapy (OR=0.58, 95% CI 0.40, 0.83, $p<0.003$). They were also less likely to be adherent (OR=0.98, 95% CI 0.96, 1.00) but there was substantial heterogeneity ($I^2=59.8%$) among the studies, with differences in study time periods and types of hormonal therapy (Figure 2).

3.6. *Social Influences-Follow up care with general practitioner (GP) versus oncologist*

Six studies examined the association between follow-up care and hormonal therapy MTB (Table 4). One study reported a negative association between follow-up care with a GP versus an oncologist and adherence to hormonal therapy (29) and five studies a negative association with persistence with hormonal therapy.(29, 39, 54, 58, 66) One study reported no association between follow-up care and adherence to hormonal therapy.(48) Data were pooled for meta-analysis from three studies which measured the association between follow-up care and persistence with hormonal therapy (Figure 2).(29, 39, 54) Women whose follow-up care was with their GP were significantly more likely not to persist with their hormonal therapy (OR=1.32, 95% CI 1.14, 1.54, $p<0.001$).

4. Discussion and Conclusion

4.1. Discussion

This systematic review is the first to examine potentially modifiable determinants of hormonal therapy MTB in women with breast cancer in routine clinical settings. Potentially modifiable determinants were identified in 42 studies and were classified into 9 domains from the TDF but most of these domains and their associated determinants were only examined in one or two studies. There is some evidence that the domains *Beliefs about Capabilities* (side-effects), *Behaviour Regulation* (managing medication) and *Social Influences* (follow-up care) influence adherence and persistence with hormonal therapy. As other previous reviews have noted, the majority of studies to date have examined sociodemographic, clinical or treatment related factors which cannot be modified and which are therefore, of little value in informing the development of interventions to enhance hormonal therapy MTB.(5, 71)

Within the domain *Beliefs about Capabilities* treatment related side-effects were significantly associated with non-persistence in meta-analysis. Studies have shown that side-effects that affect quality of life in breast cancer patients are often not acknowledged or underestimated by clinicians.(72, 73) However studies have not identified whether it is the experience of side-effects per se or a lack of individual coping skills, self-efficacy, clinical support or coordination of care or a combination of these (or other) factors which lead to non-persistence. There is also a lack of evidence on interventions to effectively manage hormonal therapy side-effects in breast cancer patients in clinical practice.(22)

Medication beliefs have also been shown to influence patients' actual experience of treatment side-effects and coping behaviours via negative expectancies, suggesting that interventions to

enhance MTB may need to include both *Beliefs about Capabilities* and *Beliefs about Consequences*.(74) Within the domain *Beliefs about Consequences*, lack of belief in the efficacy of hormonal therapy or lower perceived necessity was identified as potentially associated with hormonal therapy non-adherence and non-persistence.(46, 49, 51, 61, 64) However, the studies used various different measures of beliefs and some did not adjust for covariates.(46, 51, 68) The Health Beliefs Model (HBM) has been applied as a framework to explain MTB across disease groups, with beliefs about disease severity, personal susceptibility to recurrence, efficacy of treatment, self-efficacy, barriers to treatment and cues to action influencing health behaviours.(75, 76) The model has been extended to include the necessity-concerns framework where patients conduct a cost-benefit analysis by weighing up the necessity of their prescribed medication against concerns regarding potential adverse effects; this has been shown to influence adherence across disease groups.(76, 77) Meta-analyses has been conducted to test the power of the HBM to predict patient adherence and other health behaviours and has found that the relative importance of the components of the model (perceived susceptibility, severity, benefits, costs) vary between studies, but all components are related to better adherence.(76, 78) Patients' beliefs about their breast cancer and the value of their hormonal therapy treatment (e.g. risk, benefits, treatment efficacy) and the relationships of these beliefs with hormonal therapy MTB have not yet been established using this model.

In the domain *Behaviour Regulation* a greater number of medications was positively associated with persistence with hormonal therapy in meta-analysis. The number of medications was considered a proxy for medication management as studies have shown that patients who are medication naïve have a higher risk of medication discontinuation.(20, 21) Previous adherence has been reported to be the strongest predictor of future adherence suggesting that identifying practical barriers to medication taking may improve adherence

and persistence.(79) Non-adherent women may benefit from the provision of aids (pill boxes) and action planning techniques e.g. set up of prompts or cues around the taking of hormonal therapy.(21) To date, few studies have investigated strategies for remembering to take hormonal therapy or the capacity to implement lifestyle modifications.(46, 50) Cognitive deficits also contribute to non-adherence, particularly in older breast cancer patients, suggesting that the domain *Memory, attention and decision-making* should be considered alongside the domain *Behaviour Regulation*.(80) There was mixed evidence that costs were associated with hormonal therapy MTB within the domain *Environmental, Context and Resources* (Table 1).

The domain *Social Influences* identified follow up care with an oncologist (versus GP) to be associated with greater persistent with hormonal therapy in meta-analysis. Cancer patients who develop a strong alliance and trust in their oncologists have been shown to have greater psychosocial well-being and better treatment adherence.(81, 82) Studies of hormonal therapy MTB need to investigate the direct role that the physician-patient relationship has on treatment adherence and breast cancer outcomes. This could be through factors such as communication styles, time spent with patients or emotional and cognitive aspects of care. Good physician-patient communication has been found to be highly positively correlated with treatment adherence across diseases and training physicians to communicate better enhances patients' adherence.(83) Moreover, a linguistic study of oncologist-breast cancer patient communication reported that while discussions about hormonal therapy were generally good they often did not address potential difficulties of remaining adherent with long-term therapy.(84)

Research is also needed on patient-physician collaboration and MTB; only three studies looked at patient participation in hormonal therapy decision making in the domain *Social Identity*.(43, 45, 63) A meta-analysis of 48 studies across chronic and acute conditions found

that greater physician-patient collaboration was significantly associated with better adherence and health outcomes.(85) Improvements in knowledge and understanding can also be achieved through effective patient-physician collaboration and communication.(21) Educational materials have been reported not to improve adherence and persistence with hormonal therapy but it is possible that more “active” rather than passive delivery of information would be effective. Studies on the amount and type of knowledge and patient understanding, as well as how this information is delivered are required within the domain *Knowledge*.(86, 87)

Depression has been suggested to lead to negative attitudes towards breast cancer treatment plans and unwillingness to engage in treatment plans.(88) In the current review, the association was unclear between depression and hormonal therapy MTB (Table 1). Anxiety and distress about medical treatments have been shown to reduce adherence and uptake of healthy behaviours (e.g. clinical breast exams).(21, 89) **A recent study has found therapy related negative emotions to be significantly related to hormonal therapy MTB and are potentially modifiable through psychological intervention.**(90) The domain *Emotion* and the constructs within it also need to be investigated further alongside the domains *Social Influences*, *Social Identity* and *Knowledge* with healthcare providers addressing women’s apprehensions, uncertainty and reservations about hormonal therapy.

Potential determinants within five of the TDF domains – *Optimism*, *Skills*, *Intentions*, *Goals*, and *Reinforcement* - were not investigated in any studies. There is some evidence that personality related factors such as resilience and self-determination within the domain *Optimism* influence ability to persist with medical treatment.(91) Previous meta-analysis has shown that intentions are one of the most influential determinants of actual behaviour and yet no studies have assessed the influence of the domains *Intentions* and *Goals* or *Reinforcement* on hormonal therapy MTB. Studies have shown patient self-regulation to be associated with

adherence to health-related behaviours with patients delaying short-term gratification in favour of long-term goals and overcoming numerous barriers and difficulties to achieve their long-term outcomes.(92) Non-adherence to medication has also been related to an inability to self-regulate with factors such as self-efficacy, attitudes and beliefs, perceived control, intentions, goal priority and action plans key determinants of MTB.(93, 94) Acceptability of hormonal therapy and motivation to persist with treatment may be influenced by women's goal priorities or quality of life preferences. Studies are needed to explore determinants within these domains and establish their influence on hormonal therapy MTB.

This review has identified potentially modifiable determinants of adjuvant hormonal therapy MTB in women with breast cancer using the TDF; however it has a number of limitations. There was considerable heterogeneity in studies included in the review, with various measures of MTB and its determinants considered. Only a small number of studies were included in the meta-analyses due to the lack of sufficiently homogenous studies and pooled estimates could be biased. Despite the small number of studies, the results of the meta-analyses point to areas worthy of further exploration.(95) The majority of studies in this review measured MTB using administrative or prescription claims data and prescription refill data does not establish whether the patient actually takes the medication or not. Studies were also predominantly based on European and American populations with healthcare access and findings may not apply to populations outside of Europe or America or minority or uninsured populations. This review did not include qualitative studies but only one such study using a mixed-methods approach was identified at the study selection process.(50)

4.2. Conclusion

As more and more patients survive breast cancer, hormonal therapy MTB becomes an increasingly important part of survivorship care in clinical practice.(1) This is the first

systematic review to investigate potentially modifiable determinants of hormonal therapy MTB. This review has provided some evidence that the domains *Beliefs about Capabilities*, *Behaviour Regulation* and *Social Influences* influence adherence and persistence with hormonal therapy. However several other domains which have been reported to influence MTB in other disease groups – namely *Beliefs about Consequences*, *Intentions*, *Goals*, *Social Identity*, *Emotion* and *Knowledge* -have not been investigated in relation to hormonal therapy MTB in breast cancer.(21, 96) Moreover, the relationship between the various domains for MTB is unclear and needs to be tested in future studies.(15)

4.3. Practice Implications

The application of the TDF in this review permitted a comprehensive and systematic assessment of the evidence on potentially modifiable determinants that influence hormonal therapy MTB. The application of this theoretical framework has highlighted the critical need for further research in particular behavioural domains in order to inform the development of interventions. Fewer than half of published adherence-enhancing interventions have demonstrated improved MTB or enhanced patient outcomes; this is likely to be largely due to the fact that most interventions were developed without a thorough theoretical understanding of the factors that influence the behaviour of interest.(97, 98) A number of effective behaviour change techniques for behavioural interventions have been identified to target particular theoretical domains and these may form the basis for future evidence-based interventions.(99, 100)

Hence, despite a relatively large evidence-base, the reasons why some women do not take their hormonal therapy as prescribed remain largely unclear. More concerted action is needed to identify potentially modifiable determinants of hormonal therapy MTB, to inform the development of effective interventions to promote adherence and persistence to hormonal

therapy; this would have considerable potential to improve clinical outcomes among women with breast cancer.

Acknowledgements: We wish to thank David Mockler, medical librarian at Trinity College Dublin for developing the search strategies for this review.

Contributors: CC, EG, LS and KB planned and designed the study. CC and EG reviewed the articles. CC and SD applied the TDF. CC and KB analysed and interpreted the study data. CC drafted the manuscript. CC, EG, SD, LS and KB critically reviewed and approved the final manuscript. CC is guarantor.

Access to the data: All authors had full access to all of the data in the study and can take responsibility for the integrity of the data and the accuracy of the data analysis.

References

1. Hadji P. Improving compliance and persistence to adjuvant tamoxifen and aromatase inhibitor therapy. *Crit Rev Oncol Hematol*, 73(2) (2010), pp. 156-66.
2. Early Breast Cancer Trialists Collaborative Group (EBCTCG). Effects of chemotherapy and hormonal therapy for early breast cancer on recurrence and 15-year survival: an overview of the randomised trials. *Lancet*, 365(9472) (2005), pp. 1687-717.
3. Davies C, Godwin J, Gray R, Clarke M, Cutter D, Darby S, et al. Relevance of breast cancer hormone receptors and other factors to the efficacy of adjuvant tamoxifen: patient-level meta-analysis of randomised trials. *Lancet*, 378(9793) (2011), pp. 771-84.
4. Osterberg L, Blaschke T. Adherence to Medication. *N Engl J Med*, 353(5) (2005), pp. 487-97.
5. Murphy CC, Bartholomew LK, Carpentier MY, Bluethmann SM, Vernon SW. Adherence to adjuvant hormonal therapy among breast cancer survivors in clinical practice: a systematic review. *Breast Cancer Res Treat*, 134(2) (2012), pp. 459-78.
6. Huiart L, Ferdynus C, Giorgi R. A meta-regression analysis of the available data on adherence to adjuvant hormonal therapy in breast cancer: summarizing the data for clinicians. *Breast Cancer Res Treat*, 138(1) (2013), pp. 325-8.
7. Barron TI, Cahir C, Sharp L, Bennett K. A nested case-control study of adjuvant hormonal therapy persistence and compliance, and early breast cancer recurrence in women with stage I-III breast cancer. *Br J Cancer*, 109(6) (2013), pp.1513-21.
8. Hershman DL, Shao T, Kushi LH, Buono D, Tsai WY, Fehrenbacher L, et al. Early discontinuation and non-adherence to adjuvant hormonal therapy are associated with

increased mortality in women with breast cancer. *Breast Cancer Res Treat*, 126(2) (2011), pp. 529-37.

9. World Health Organisation (2003) Adherence to long term therapies: Evidence for action. WHO/MNC/03.01

10. Michie S, Johnston M, Abraham C, Lawton R, Parker D, Walker A. Making psychological theory useful for implementing evidence based practice: a consensus approach. *Qual Safe Health Care*, 14(1) (2005), pp. 26-33.

11. Cane J, O'Connor D, Michie S. Validation of the theoretical domains framework for use in behaviour change and implementation research. *Implementation Science*, 7(1) (2012), p. 37.

12. Michie S, Johnston M, Francis J, Hardeman W, Eccles M. From Theory to Intervention: Mapping Theoretically Derived Behavioural Determinants to Behaviour Change Techniques. *Applied Psychology*, 57(4) (2008), pp. 660-80.

13. Godin G, Belanger-Gravel A, Eccles M, Grimshaw J. Healthcare professionals' intentions and behaviours: A systematic review of studies based on social cognitive theories. *Implementation Science*, 3(1) (2008), p.36.

14. Zhu DQ, Norman IJ, While AE. The relationship between doctors' and nurses' own weight status and their weight management practices: a systematic review. *Obesity Reviews*. 12(6) (2011), pp.459-69.

15. Francis J, O'Connor D, Curran J. Theories of behaviour change synthesised into a set of theoretical groupings: introducing a thematic series on the theoretical domains framework. *Implementation Science*. 7(1) (2012), pp.35.

16. Moher, D., Liberati, A., Tetzlaff, J., Altman, D. G. & The PRISMA Group. (2009) Preferred Reporting Items for Systematic Reviews and Meta-Analyses: The PRISMA Statement. *PLoS Med*, 6(7) (2009), e1000097.
17. Zeber JE, Manias E, Williams AF, Hutchins D, Udezi WA, Roberts CS, et al. A Systematic Literature Review of Psychosocial and Behavioral Factors Associated with Initial Medication Adherence: A Report of the ISPOR Medication Adherence & Persistence Special Interest Group. *Value in Health*, 16(5) (2013), pp. 891-900.
18. Downs, S. H. & Black, N. The feasibility of creating a checklist for the assessment of the methodological quality both of randomised and non-randomised studies of health care interventions. *J Epidemiol Community Health*, 52(6) (1998), pp. 377-84
19. Peterson AM, Nau DP, Cramer JA, Benner J, Gwadry-Sridhar F, Nichol M. A Checklist for Medication Compliance and Persistence Studies Using Retrospective Databases. *Value in Health*, 10(1) (2007), 3-12.
20. Vanelli M, Pedan A, Liu N, Hoar J, Messier D, Kiarsis K. The role of patient inexperience in medication discontinuation: A retrospective analysis of medication nonpersistence in seven chronic illnesses. *Clinical Therapeutics*, 31(11) (2009), pp. 2628-52.
21. DiMatteo MR, Haskard-Zolnierrek KB, Martin LR. Improving patient adherence: a three-factor model to guide practice. *Health Psychology Review*, 6(1) (2011), pp.74-91.
22. Von Blanckenburg P, Schuricht F, Albert US, Rief W, Nestoriuc Y. Optimizing expectations to prevent side effects and enhance quality of life in breast cancer patients undergoing endocrine therapy: Study protocol of a randomized controlled trial. *BMC Cancer*, 13, (2013), pp.426.

23. Harris JR, Bradburn MJ, Deeks JJ, Harbord RM, Altman DG, Sterne JAC. Meta-analysis: fixed and random-effects meta analysis. *The Stata Journal*, 8(1) (2008), pp.3-28.
24. Higgins JPT, Thompson SG, Deeks JJ, Altman DG. Measuring inconsistency in meta-analyses. *21(55)* (2003), pp. 557-560.
25. Zeeneldin AA, Gaber AA, Taha FM. Does fasting during Ramadan trigger non-adherence to oral hormonal therapy in breast cancer patients? *J Egypt Natl Canc Inst.* 24(3) (2012), pp.133-7.
26. Nekhlyudov L, Li L, Ross-Degnan D, Wagner AK. Five-year patterns of adjuvant hormonal therapy use, persistence, and adherence among insured women with early-stage breast cancer. *Breast Cancer Res Treat*, 130(2) (2011), pp. 681-9.
27. Riley GF, Warren JL, Harlan LC, Blackwell SA. Endocrine therapy use among elderly hormone receptor-positive breast cancer patients enrolled in Medicare Part D. *Medicare Medicaid Res Rev*, 1(4) (2011)
28. Wigertz A, Ahlgren J, Holmqvist M, Fornander T, Adolfsson J, Lindman H, et al. Adherence and discontinuation of adjuvant hormonal therapy in breast cancer patients: a population-based study. *Breast Cancer Res Treat*, 133(1) (2012), pp. 367-73.
29. Neugut AI, Subar M, Wilde ET, Stratton S, Brouse CH, Hillyer GC, et al. Association between prescription co-payment amount and compliance with adjuvant hormonal therapy in women with early-stage breast cancer. *J Clin Oncol*, 29(18) (2011), pp. 2534-42.
30. Huiart L, Dell'Aniello S, Suissa S. Use of tamoxifen and aromatase inhibitors in a large population-based cohort of women with breast cancer. *Br J Cancer*, 104(10) (2011), pp.1558-63.

31. Hershman DL, Kushi LH, Shao T, Buono D, Kershenbaum A, Tsai WY, et al. Early discontinuation and nonadherence to adjuvant hormonal therapy in a cohort of 8,769 early-stage breast cancer patients. *J Clin Oncol*, 28(27) (2010), pp.4120-8.
32. Sedjo RL, Devine S. Predictors of non-adherence to aromatase inhibitors among commercially insured women with breast cancer. *Breast Cancer Res Treat*, 125(1) (2011), pp. 191-200.
33. Kimmick G, Anderson R, Camacho F, Bhosle M, Hwang W, Balkrishnan R. Adjuvant hormonal therapy use among insured, low-income women with breast cancer. *J Clin Oncol*, 27(21) (2009), pp.3445-51.
34. Ziller V, Kalder M, Albert US, Holzhauer W, Ziller M, Wagner U, et al. Adherence to adjuvant endocrine therapy in postmenopausal women with breast cancer. *Ann Oncol*, 20(3) (2009), pp. 431-6.
35. Partridge AH, Wang PS, Winer EP, Avorn J. Nonadherence to adjuvant tamoxifen therapy in women with primary breast cancer. *J Clin Oncol*, 21(4) (2003), pp. 602-6.
36. Font R, Espinas JA, Gil-Gil M, Barnadas A, Ojeda B, Tusquets I, et al. Prescription refill, patient self-report and physician report in assessing adherence to oral endocrine therapy in early breast cancer patients: a retrospective cohort study in Catalonia, Spain. *Br J Cancer*, 107(8) 2012, pp.1249-56.
37. Markkula A, Hietala M, Henningson M, Ingvar C, Rose C, Jernstrom H. Clinical profiles predict early nonadherence to adjuvant endocrine treatment in a prospective breast cancer cohort. *Cancer Prev Res (Phila)*, 5(5) (2012), pp.735-45.

38. Huiart L, Bouhnik AD, Rey D, Tarpin C, Cluze C, Bendiane MK, et al. Early discontinuation of tamoxifen intake in younger women with breast cancer: is it time to rethink the way it is prescribed? *Eur J Cancer*, 48(13) (2012), pp. 1939-46.
39. Danilak M, Chambers CR. Adherence to adjuvant endocrine therapy in women with breast cancer. *J Oncol Pharm Pract*, 19(2) (2013), pp. 105-10.
40. Hadji P, Jackisch C, Bolten W, Blettner M, Hindenburg HJ, Klein P, et al. COMPLIance and Arthralgia in Clinical Therapy: the COMPACT trial, assessing the incidence of arthralgia, and compliance within the first year of adjuvant anastrozole therapy. *Ann Oncol*, 25(2) (2014), pp.372-7.
41. Klepin HD, Geiger AM, Bandos H, Costantino JP, Rapp SR, Sink KM, et al. Cognitive Factors Associated with Adherence to Oral Antiestrogen Therapy: Results from the Cognition in the Study of Tamoxifen and Raloxifene (Co-STAR) Study. *Cancer Pre Res*, 7(1) (2014), pp.161-8.
42. Krotneva SP, Ramjaun A, Reidel KE, Eguale T, Trabulsi N, Mayo N, et al. Use of hormonal therapy in senior breast cancer patients treated with or without radiotherapy. *Radiation Oncology*, 21(1) (2013), pp. 105-115.
43. Huiart L, Bouhnik A-D, Rey D, Rousseau F, Retornaz F, Meresse M, et al. Complementary or Alternative Medicine as Possible Determinant of Decreased Persistence to Aromatase Inhibitor Therapy among Older Women with Non-Metastatic Breast Cancer. *PLoS ONE*, 8(12) (2013), e81677.
44. Steiner JF, Prochazka AV. The assessment of refill compliance using pharmacy records: Methods, validity, and applications. *J Clin Epidemiol*, 50(1) (1997), pp.105-16.

45. Liu Y, Malin JL, Diamant AL, Thind A, Maly RC. Adherence to adjuvant hormone therapy in low-income women with breast cancer: the role of provider-patient communication. *Breast Cancer Res Treat.* 137(3) (2013), pp. 829-36.
46. Grunfeld EA, Hunter MS, Sikka P, Mittal S. Adherence beliefs among breast cancer patients taking tamoxifen. *Patient Educ Couns.* 59(1) (2005), pp. 97-102.
47. Atkins L, Fallowfield L. Intentional and non-intentional non-adherence to medication amongst breast cancer patients. *Eur J Cancer,* 42(14) (2006), pp. 2271-6.
48. Alkhayyat S, Younus J, Mirza F, Stitt L. Comparison of adherence to antiestrogen therapy in patients with early breast cancer followed at tertiary centers versus through family physicians and primary surgeons: A practice review. *Breast Cancer Management,* 1(3) (2012), pp. 209-15.
49. Wouters H, Maatman GA, Van Dijk L, Bouvy ML, Vree R, Van Geffen ECG, et al. Trade-off preferences regarding adjuvant endocrine therapy among women with estrogen receptor-positive breast cancer. *Ann Oncol,* 24(9) (2013), pp. 2324-9.
50. Simon R, Latreille J, Matte C, Desjardins P, Bergeron E. Adherence to adjuvant endocrine therapy in estrogen receptor-positive breast cancer patients with regular follow-up. *Can J Surg.* 57(1) (2014), pp. 26-32.
51. Jacob Arriola KR, Mason TA, Bannon KA, Holmes C, Powell CL, Horne K, et al. Modifiable risk factors for adherence to adjuvant endocrine therapy among breast cancer patients. *Patient Educ Couns.* 95(1) (2014), pp. 98-103.
52. Wickersham KE, Sereika SM, Bender CM. Pretreatment predictors of short-term nonadherence to oral hormonal therapy for women with breast cancer. *Nurs Res.* 62(4) (2013), pp. 243-51.

53. Stilley CS, Bender CM, Dunbar-Jacob J, Sereika S, Ryan CM. The impact of cognitive function on medication management: three studies. *Health Psychology*. 29(1) (2010), pp.50-5.
54. Guth U, Myrick ME, Kilic N, Eppenberger-Castori S, Schmid SM. Compliance and persistence of endocrine adjuvant breast cancer therapy. *Breast Cancer Res Treat*. 131(2) (2012), pp.491-9.
55. Cluze C, Rey D, Huiart L, BenDiane MK, Bouhnik AD, Berenger C, et al. Adjuvant endocrine therapy with tamoxifen in young women with breast cancer: determinants of interruptions vary over time. *Ann Oncol*, 23(4) (2012), pp. 882-90.
56. van Herk-Sukel MP, van de Poll-Franse LV, Voogd AC, Nieuwenhuijzen GA, Coebergh JW, Herings RM. Half of breast cancer patients discontinue tamoxifen and any endocrine treatment before the end of the recommended treatment period of 5 years: a population-based analysis. *Breast Cancer Res Treat*, 122(3) (2010), pp. 843-51.
57. Owusu C, Buist DS, Field TS, Lash TL, Thwin SS, Geiger AM, et al. Predictors of tamoxifen discontinuation among older women with estrogen receptor-positive breast cancer. *J Clin Oncol*. 26(4) (2008), pp. 549-55.
58. Hadji P, Ziller V, Kyvernitakis J, Bauer M, Haas G, Schmidt N, et al. Persistence in patients with breast cancer treated with tamoxifen or aromatase inhibitors: a retrospective database analysis. *Breast Cancer Res Treat*. 138(1) (2013), pp.185-91.
59. Ma AM, Barone J, Wallis AE, Wu NJ, Garcia LB, Estabrook A, et al. Noncompliance with adjuvant radiation, chemotherapy, or hormonal therapy in breast cancer patients. *Am J Surg*. 196(4) (2008), pp. 500-4.

60. Barron TI, Connolly R, Bennett K, Feely J, Kennedy MJ. Early discontinuation of tamoxifen: a lesson for oncologists. *Cancer*, 109(5) (2007), pp. 832-9.
61. Lash TL, Fox MP, Westrup JL, Fink AK, Silliman RA. Adherence to tamoxifen over the five-year course. *Breast Cancer Res Treat*, 99(2) (2006), pp. 215-20.
62. Aiello Bowles EJ, Boudreau DM, Chubak J, Yu O, Fujii M, Chestnut J, et al. Patient-reported discontinuation of endocrine therapy and related adverse effects among women with early-stage breast cancer. *J Oncol Pract*, 8(6) (2012), e149-57.
63. Kahn KL, Schneider EC, Malin JL, Adams JL, Epstein AM. Patient centered experiences in breast cancer: predicting long-term adherence to tamoxifen use. *Med Care*. 45(5) (2007), pp. 431-9.
64. Fink AK, Gurwitz J, Rakowski W, Guadagnoli E, Silliman RA. Patient beliefs and tamoxifen discontinuance in older women with estrogen receptor--positive breast cancer. *J Clin Oncol*, 22(16) (2004), pp. 3309-15.
65. Demissie S, Silliman RA, Lash TL. Adjuvant tamoxifen: predictors of use, side effects, and discontinuation in older women. *J Clin Oncol*, 19(2) (2001), pp. 322-8.
66. Guth U, Huang DJ, Schotzau A, Zanetti-Dallenbach R, Holzgreve W, Bitzer J, et al. Target and reality of adjuvant endocrine therapy in postmenopausal patients with invasive breast cancer. *Br J Cancer*, 99(3) (2008), pp. 428-33.
67. Guth U, Myrick ME, Schotzau A, Kilic N, Schmid SM. Drug switch because of treatment-related adverse side effects in endocrine adjuvant breast cancer therapy: How often and how often does it work? *Breast Cancer Res Treat*, 129(3) (2011), pp.799-807.

68. Friese C, Pini TM, Li Y, Abrahamse P, Graff J, Hamilton A, et al. Adjuvant endocrine therapy initiation and persistence in a diverse sample of patients with breast cancer. *Breast Cancer Res Treat*, 138(3) (2013), pp.931-9.
69. Livaudais JC, LaCroix A, Chlebowski RT, Li CI, Habel LA, Simon MS, et al. Racial/Ethnic Differences in Use and Duration of Adjuvant Hormonal Therapy for Breast Cancer in the Women's Health Initiative. *Cancer Epidemiol Biomarkers Prev*, 22(3) (2013), pp. 365-73.
70. Chim K, Xie SX, Stricker CT, Li QS, Gross R, Farrar JT, et al. Joint pain severity predicts premature discontinuation of aromatase inhibitors in breast cancer survivors. *BMC Cancer*, 13 (2013), p.401.
71. Gotay C, Dunn J. Adherence to long-term adjuvant hormonal therapy for breast cancer. *Expert Rev Pharmacoecon Outcomes Res*. 11(6) (2011), pp.709-15.
72. Fallowfield L. Acceptance of adjuvant therapy and quality of life issues. *Breast*, 14(6) (2005), pp. 612-6.
73. Fellowes D, Fallowfield LJ, Saunders CM, Houghton J. Tolerability of hormone therapies for breast cancer: how informative are documented symptom profiles in medical notes for 'well-tolerated' treatments? *Breast Cancer Res Treat*, 66(1) (2001), pp.73-81.
74. Bickell NA, Weidmann J, Fei K, Lin JJ, Leventhal H. Underuse of Breast Cancer Adjuvant Treatment: Patient Knowledge, Beliefs, and Medical Mistrust. *J Clin Oncol*. 27(31) (2009), pp. 5160-7.
75. Brewer NT, Chapman GB, Gibbons FX, Gerrard M, McCaul KD, Weinstein ND. Meta-analysis of the relationship between risk perception and health behavior: the example of vaccination. *Health Psychology*. 26(2) (2007), p.136.

76. DiMatteo MR, Haskard KB, Williams SL. Health beliefs, disease severity, and patient adherence: a meta-analysis. *Med Care.* 45(6) (2007), pp.521-8.
77. Horne R, Weinman J. Patients' beliefs about prescribed medicines and their role in adherence to treatment in chronic physical illness. *J Psychosom Res.* 47(6) (1999), pp. 555-67.
78. Harrison, J. A., Mullen P.D. , Green L.W. A meta-analysis of studies of the Health Belief Model with adults. *Health Educ Res.* 7(1) (1992), pp. 107-16
79. Turner BJ, Weiner M, Yang C, TenHave T. Predicting Adherence to Colonoscopy or Flexible Sigmoidoscopy on the Basis of Physician Appointment–Keeping Behavior. *Ann Intern Med.* 140(7) (2004), pp. 528-32.
80. Cooper, C., Carpenter, I., Katona, C., Schroll, M., Wagner, C., Fialova, D., Livingston, G. The AdHOC Study of older adults' adherence to medication in 11 countries. *Am J Geriatr Psychiatry.* 13(12) (2005), pp. 1067-76
81. Trevino KM, Fasciano K, Prigerson HG. Patient-Oncologist Alliance, Psychosocial Well-Being, and Treatment Adherence Among Young Adults With Advanced Cancer. *J Clin Oncol.* 31(13) (2013), pp. 1683-9.
82. Hillen, M. A., De Haes HC, Smets, E. M. Cancer patients' trust in their physician-a review. *Psychooncology.* 20(3) (2011), pp. 227-41.
83. Zolnierok, K. B. & DiMatteo, M. R. Physician communication and patient adherence to treatment: a meta-analysis. *Med Care.* 47(8) (2009), pp. 826-34.

84. Davidson B, Vogel V, Wickerham L. Oncologist-patient discussion of adjuvant hormonal therapy in breast cancer: results of a linguistic study focusing on adherence and persistence to therapy. *J Support Oncol.* 5(3) (2007), pp.139-43.
85. Arbuthnott A, Sharpe D. The effect of physician-patient collaboration on patient adherence in non-psychiatric medicine. *Patient Educ Couns.* 77(1) (2009), pp. 60-7.
86. Hadji P, Blettner M, Harbeck N, Jackisch C, Luck HJ, Windemuth-Kieselbach C, et al. The Patient's Anastrozole Compliance to Therapy (PACT) Program: a randomized, in-practice study on the impact of a standardized information program on persistence and compliance to adjuvant endocrine therapy in postmenopausal women with early breast cancer. *Ann Oncol.* 24(6) (2013), pp. 1505-12.
87. Nogaret JM, Coibion M, Neven P, Soepenberg O, Graas MP, Deschamp V, et al. Evaluating the impact of educational material on anastrozole treatment adherence - The final results of the ARTEMIS study. *Cancer Res.* 71(24) (2011), p. 24
88. Manning, M. & Bettencourt, B. A. Depression and medication adherence among breast cancer survivors: bridging the gap with the theory of planned behaviour. *Psychol Health.* 26 (9) (2011), pp.1173-87.
89. Thorpe, J. M., Kalinowski C.T., Patterson, M. E., Sleath, B. L. Psychological distress as a barrier to preventive care in community-dwelling elderly in the United States. *Med Care.* 44(2) (2006), pp. 187-91
90. Stanton A, Petrie K, Partridge A. Contributors to nonadherence and nonpersistence with endocrine therapy in breast cancer survivors recruited from an online research registry. *Breast Cancer Research and Treatment.*145(2) (2014), pp.525-34

91. Windle G. What is resilience? A review and concept analysis. *Reviews in Clinical Gerontology*. 21 (2011), pp.152-69.
92. Hagger MS, Wood C, Stiff C, Chatzisarantis NLD. The strength model of self-regulation failure and health-related behaviour. *Health Psychology Review*. 3(2) (2009), pp. 208-38.
93. Horne R, Weinman J. Self-regulation and Self-management in Asthma: Exploring The Role of Illness Perceptions and Treatment Beliefs in Explaining Non-adherence to Preventer Medication. *Psychology & Health*. 17(1) (2002), pp. 17-32.
94. Sniehotta FF. Towards a theory of intentional behaviour change: plans, planning, and self-regulation. *Br J Health Psychol*. 14 (2009), pp.261-73.
95. Higgins, J. & Green, S. *Cochrane Handbook for Systematic Reviews of Interventions* Version 5.1.0. The Cochrane Collaboration, 2011. Available from www.cochrane-handbook.org.
96. McHorney, C. A. The Adherence Estimator: a brief, proximal screener for patient propensity to adhere to prescription medications for chronic disease. *Curr Med Res Opin*. 25(1) (2009), pp. 215-38.
97. van Dulmen S, Sluijs E, van Dijk L, de Ridder D, Heerdink R, Bensing J. Patient adherence to medical treatment: a review of reviews. *BMC Health Serv Research*, 7 (2007), p.55.
98. Haynes R, Ackloo E, Sahota N, McDonald H, Yao X. Interventions for enhancing medication adherence. *Cochrane Database Systematic Review*. 16;(2) (2008), CD000011.

99. Abraham C, Michie S. A taxonomy of behavior change techniques used in interventions. *Health Psychology*. 27(3) (2008), pp. 379-87
100. Cane J, Richardson M, Johnston M, Ladha R, Michie S. From lists of behaviour change techniques (BCTs) to structured hierarchies: Comparison of two methods of developing a hierarchy of BCTs. *Br J Health Psychol*. 20(1), (2014), pp 130-150.

Table 1: Summary of studies reporting potentially modifiable determinants of hormonal therapy MTB mapped to the TDF

TDF Domain	TDF Construct	Determinants	Adherence	Persistence	Initiation	
Knowledge	Knowledge of treatment	Books/information leaflets about treatment		*		
		Inadequate information about treatment		-	-	
		Discussion with physician about why treatment is needed	*			
Social Identity	Knowledge of side-effects	Inadequate information on side-effects		-		
		Patient role	Perceived self-efficacy in patient-physician interaction (low)	-		
		Perceived less than adequate role in the decision making about treatment		- *		
		Decision making about treatment without adequate provider input		-		
Beliefs about capabilities	Coping with side-effects	Multidimensional Health Locus of Control (weaker)	-			
		Treatment side-effects (general)	--- **	---- *		
		Weight concern	-			
		Menopausal effects (hot flushes)		++		
		Headaches		-		
		Loss of appetite		-		
		Nausea (vomiting)		-		
		Arthralgia (joint pain)	-	-		
Beliefs about consequences	Beliefs about treatment	Beliefs about treatment (benefit/drawback ratio)	--- *	--- *	*	
		Dislike taking medication	-			
		Outcome expectancies	Belief treatment will prevent breast cancer recurrence	+		
Behaviour regulation	Managing medication	Number of co-morbidities	++ -- ***	++++ --- *****	*	
		Number of prescriptions (other medications)	*****	+++++++ **	*	
		Adding a new prescription (new medications)		--		
		Longer prescription refill intervals	+	+		
		Mail order pharmacy use	+			
		Action planning	Strategies employed to remember to take treatment (e.g. dosage box)	+ *		
		Time of day treatment is taken	*			
Memory, attention and decision making	Memory	Forgetting	-			
		Figural memory (deficits)	*			
		Verbal memory (deficits)	-			
		Attention and working memory (deficits)	- *			
		Attention	Cognitive function	*		
Environmental context and resources	Cost	Cognitive impairment		**		
		Type of drug programme/insurance	- **	****		
		Monthly cost of treatment		**		
		High out of pocket costs	--	--		
		Low material/financial support		*		
		Health system	Problems receiving prescriptions from physician	*		
Social Influences	Personal support	Married/relationship vs. single/other	+++ - ****	+ -- ***		
		Receiving psychological support		**		
		Support of friends and relatives	+			
	Clinical support	Insufficient social support		---		
		Pharmacy call back (follow up on hormonal therapy use)		*		
		Received psychological support since diagnosis		**		
		Follow up care- general practitioner (GP) vs. oncologist	- *	----	-	
Referral/seeing medical oncologist	+	**	+			

TDF Domain	TDF Construct	Determinants	Adherence	Persistence	Initiation
		One primary physician involved in follow up care		+	
		Increasing number of oncology visits during treatment	- *	- *	
		Frequency of physician communication (high/regular)	++		
		Poor patient-physician communication	-	**	
		No opportunity to ask questions		- *	
	Social norms	Previous history of breast cancer	*		
		History of cancer in family and/or social circle	+ ***	*	
Emotion	Negative affect	Depression	-- *	+ ***	
		Fatigue/inertia	*		
		Anxiety	*		
		Psychological distress		--	
	Fear	Fear of breast cancer recurrence	+	*	+

Determinants were examined in relation to adherence, non-adherence, persistence, non-persistence, initiation, non-initiation. A determinant positively associated with non-adherence was considered to be negatively associated with adherence.

Each +, -, * represents one study. One study may include multiple determinants.

+ Determinant positively associated with hormonal therapy adherence, persistence or initiation

- Determinant negatively associated with hormonal therapy adherence, persistence or initiation

* Determinant has no association with hormonal therapy adherence, persistence or initiation

Table 2: Studies of treatment side-effects and adherence and persistence to adjuvant hormonal therapy among women with breast cancer in clinical practice settings (TDF domain Beliefs about Capabilities)

Primary author, year	Study type	Country	Participant characteristics	Eligibility criteria	Time period	HT	Adherence	Persistence	Side-effects	Results	Covariates
Liu, 2013 (45)	Prospective cohort	US	303 women; mean age 51 yrs; 49% less-acculturated Latinas, 41% not completed high school	Aged ≥ 18 years, newly diagnosed with BC, enrolled in the California Breast and Cervical Cancer Treatment Program (BCCTP)	36 m	TAM, AI	Self-report	Not measured	Abstracted from patient medical records (multiple side effects classified Yes/No)	AOR = 0.26, 95% CI 0.11, 0.63, p = 0.003	Age, ethnicity, educational level, marital status, health insurance, financial adequacy, discussion with physicians about why hormonal therapy would be needed, low patient-doctor communication, low patient perceived self-efficacy in patient-physician interaction, comorbidity, tumour stage, treatment received for BC-radiation therapy, chemotherapy, mastectomy
Font, 2012 (36)	Cross-sectional	Spain	692 women; 89% received chemotherapy and/or radiotherapy	Diagnosis of BC stages I-IIIa, HR+, at least one rx for adjuvant endocrine treatment	5 yrs	TAM, AI	Physician report, self-report, MPR $\geq 80\%$ drug reimbursement database	≤ 2 months between rx fills	Abstracted from patient medical records (multiple side-effects classified Yes/No)	Physician adherence report AOR=1.81, 95% CI: 0.81, 4.02 Patient self-report AOR=1.06, 95% CI 0.49, 2.28 Prescription refill AOR=1.25, 95% CI 0.81, 1.93	Age, tumour stage, surgical treatment, type of surgical treatment (conservative breast surgery), radiotherapy, neoadjuvant chemotherapy, adjuvant chemotherapy, type of hormonal therapy

Primary author, year	Study type	Country	Participant characteristics	Eligibility criteria	Time period	HT	Adherence	Persistence	Side-effects	Results	Covariates
Ziller, 2009 (34)	Retrospective cohort	Germany	100 women; random sample taken (50 TAM and 50 AI) out of database of 258 patients, mean age 65 yrs (TAM), 71 years (AI), Stage I-III BC	Treated with surgery for BC at author clinic; assigned to adjuvant endocrine therapy; tx started 12-24 months before interview; postmenopausal;	Median time 13.6 m (TAM), 16.6 m (AI)	TAM, AI	MPR \geq 80% ; self-report	Not measured	Abstracted from patient medical records: sweating, muscular problems, sleep disorders, anxiety, depression, exhaustion, sexual disorders, vaginal dryness, urinary tract problems	Sweating OR=1.71, 95% CI: 0.36, 8.15 Muscular problems OR=0.64, 95% CI: 0.14, 2.86 Sleep disorders OR=0.34, 95% CI: 0.06, 1.80 Anxiety OR=0.38, 95% CI: 0.09, 1.57 Depression OR=1.22, 95% CI: 0.31, 4.89 Exhaustion OR=0.64, 95% CI: 0.14, 2.86 Sexual disorders OR=0.48, 95% CI: 0.12, 1.96 Vaginal dryness OR=1, 95% CI: 0.24, 4.11 Urinary tract problems OR=1.15, 95% CI: 0.37, 6.14	No adjustment for covariates
Wickersham, 2013 (52)	Prospective cohort	US	198 women, mean age 59 yrs, white (98.3%), educated (mean 15 yrs of schooling)	Aged < 75 yrs, English speaking, minimum 8 years of education, oral HT alone or in combination with chemotherapy	6 m	TAM,AI	Medication Event Monitoring System (MEMS)- \geq 80%	Not measured	Breast Cancer Prevention Trial (BCPT) Symptom Checklist	Correlation, $r = 0.15$ between BCPT overall score and adherence ($p \leq 0.20$) Subscale weight concern scores ($b=0.209$ $SE=0.039$ $p = .003$) in multiple regression model. No association reported for other subscales or BCPT overall score.	Study membership, employment status, primary occupation (homemaker and related categories vs. other), DCIS tumour type, and menopausal status.
Simon, 2014 (50)	Prospective cohort	Canada	161 women; mean age 56.6	One clinic, ER+ BC	6 m	TAM,AI	Self-report- 80% adherence, 100% adherence	Not measured	Patient self-report	Qualitative analysis- side-effects reported to be related to non-adherence (N=7)	Not applicable

Primary author, year	Study type	Country	Participant characteristics	Eligibility criteria	Time period	HT	Adherence	Persistence	Side-effects	Results	Covariates
Lash, 2006 (61)	Prospective cohort	US	462 women; 58% aged 70-79 yrs; 87% ER+ tumours	Diagnosed with stage I-IIIa BC; age \geq 65 yrs; ER+/indeterminate tumours; initiated TAM	63 m	TAM	Not measured	Self-report continuing with treatment at each interview 3, 6, 15, 27, 39, 51, and 63 months	Patient self-report: number of TAM side-effects at baseline (\geq 1) and follow up 3, 6, 15, 27, 39, 51, and 63 months	Initial severe side effects: HR per side effect=1.2, 95% CI 0.97, 1.5 Developed new side-effects: HR per new side effect=1.3, 95% CI 1.0, 1.6.	Age, enrolment site, estrogen receptor status, number of prescription medications taken, patients' decisional balance scores
Kahn, 2007 (63)	Cross-sectional	US	881; 85% white, one third \geq 65 yrs, 92% ER/PR+ tumour	Diagnosed with stage I-III BC, registered by ACoS hospital cancer registry; initiated TAM; age 21-80 yrs at dx	4 yrs post dx	TAM	Not measured	Self-report continuing with treatment (no time gaps specified)	Patient self-report - classified as severe, moderate, mild or none	Severe side-effects AOR=5.95 95% CI 3.95, 8.99	Age, ethnicity, insurance, HR status, stage at diagnosis, lymph node involvement, BMI, comorbidity, surgery, chemotherapy, radiation
Demissie, 2001(65)	Prospective cohort	US	303 women; mean age 67.7 yrs, 50% married, 83% high school education	Aged \geq 55 yrs, newly diagnosed with stage I-III BC, no history of prior BC	33 m	TAM	Not measured	Self-report continuing with treatment at 21 months	Patient self-report. Two dichotomous variables (Yes/No); hot flashes alone and any side effects, including hot flashes.	Any side-effects AOR=4 95% CI 1.1-13.9	Age, standard primary therapy, ER status, treatment decision making (sources of helpful information about BC and its treatment)
Guth, 2011(67)	Retrospective cohort	Switzerland	427 women, mean age 65.9, majority stage I-II	Diagnosed with non-metastatic BC, treated with surgery at author institution, ER/PR+ tumours, postmenopausal	Median follow up 16.5 m	TAM, AI	Not measured	Self-report continuing with treatment	Patient self-report	37 non-persistent and 24 (64.9%) due to side-effects	No adjustment for covariates

Primary author, year	Study type	Country	Participant characteristics	Eligibility criteria	Time period	HT	Adherence	Persistence	Side-effects	Results	Covariates
Bowles, 2012 (62)	Cross-sectional	US	538, mean age 64 yrs; 90% white; postmenopausal	Diagnosed with BC, received at least one TAM, AI rx within 12 m after dx, postmenopausal	3 m	TAM, AI	Not measured	Self-report continuing with treatment for 5 yrs. Validated against pharmacy data.	Patient self-report	Headaches: AIs: AOR = 4.16; 95% CI, 2.16, 8.01 TAM: AOR =2.34; 95% CI, 1.24, 4.41. Loss of appetite, upset stomach, or vomiting TAM: AOR 2.45; 95% CI, 1.14, 5.28. Hormone or menopause-related adverse effects AIs: AOR 0.35; 95% CI, 0.18, 0.70 TAM: AOR 0.45, 95% CI, 0.24, 0.83.	Age, year of diagnosis
Fink, 2004 (64)	Prospective cohort	US	516; majority aged ≥ 70 yrs, high school graduates	Diagnosed with stage I-IIIa BC, no prior history of BC; age ≥ 65 yrs; ER+ tumours; prescribed and taking TAM	27 m	TAM	Not measured	Self-report continuing with treatment at each interview. Subset validated against pharmacy records	Items from the National Surgical Adjuvant Breast and Bowel Project Breast Cancer Prevention Trial13. Classified the number of reported severe side effects as 0, 1, or 2.	1 side-effect: OR=1.3 95% CI 0.72, 2.3 ≥ 2 side-effects: OR=1.1 95% CI 0.64, 1.9 Recalculated as any side-effects: OR= 1.23 95% CI 0.74, 1.87	No adjustment for covariates

BC breast cancer, m months, yrs years, AI aromatase inhibitor, TAM tamoxifen, MPR medication possession ratio, tx treatment, rx prescription, dx diagnosis, ER/PR+ estrogen or progesterone receptor positive, AOR adjusted odds ratios, OR odds ratio, HR hazard ratio, CI confidence intervals

Table 3: Number of medications and adherence and persistence to adjuvant hormonal therapy among women with breast cancer in clinical practice settings (TDF domain Behaviour Regulation)

Primary author, year	Study type	Country	Participant characteristics	Eligibility criteria	Time period	HT	Adherence	Persistence	Number of medications	Results	Covariates
Neugut, 2011(29)	Retrospective cohort	US	22,160 (8,110 <65 yrs, 14,050 ≥ 65 yrs)/mean age 67.4 yrs, postmenopausal: 89.5% white, 74.3% married	Diagnosed with early stage BC; filled at least two 90 day mail order rx for an AI bwt 2007 - 2008: age ≥ 50 yrs	2 yrs	AI	MPR ≥ 80%	Minimum 45 days elapsed from prior rx without a refill, with no subsequent refills before end of study period	Total number of prescriptions filled or refilled for each patient within the prior 12 months	<p>< 65 years non-adherence: 5-9 meds vs < 5: AOR= 0.93 95% CI 0.76, 1.14 10-14 meds vs < 5: AOR= 0.86 95% CI 0.70, 1.07 ≥ 15 meds vs < 5; AOR=0.85 95% CI 0.68, 1.07</p> <p>≥ 65 years non-adherence: 5-9 meds vs < 5: AOR= 1.10 95% CI 0.90, 1.34 10-14 meds vs < 5: AOR= 1.04 95% CI 0.85, 1.28 ≥ 15 meds vs < 5; AOR=0.85 95% CI 0.70, 1.04</p> <p>< 65 years non-persistence: 5-9 meds vs < 5: AOR= 0.92 95% CI 0.79, 1.07 10-14 meds vs < 5: AOR= 0.75 95% CI 0.64, 0.89 ≥ 15 meds vs < 5; AOR=0.57 95% CI 0.48, 0.67</p> <p>≥ 65 years non-persistence: 5-9 meds vs < 5: AOR= 0.84 95% CI 0.73, 0.96 10-14 meds vs < 5: AOR= 0.74 95% CI 0.64, 0.85 ≥ 15 meds vs < 5; AOR=0.60 95% CI 0.52, 0.68</p>	Age, race, marital status, income, region, 90 day out of pocket cost, follow up with primary care physician vs oncologist, comorbidities

Primary author, year	Study type	Country	Participant characteristics	Eligibility criteria	Time period	HT	Adherence	Persistence	Number of medications	Results	Covariates
Kimmick, 2009 (33)	Retrospective cohort	US	1,491; mean age 67 yrs (range 29-102), 59% White, low income, insured via gov programmes, 60% ER/PR+ tumours	Non-metastatic invasive BC 1998-2002, HR+ or unknown BCs, continuously enrolled in Medicaid for the 24 months after dx, local or regional staging, breast-conserving surgery or mastectomy, non-missing data on radiation status	1 yr	TAM, AI	MPR \geq 80%	No more than 90 days between rx fills or in tx gaps	Number of unique prescription meds within 12 months	<i>Adherence:</i> AOR=1.01 95% CI 0.99, 1.02 per unit increase in meds <i>Persistence:</i> AOR=1.06 95% CI 1.05, 1.08 per unit increase in meds	Age, race, comorbidity, marital status, stage, HR status, type of surgery, chemotherapy, radiation, urban residence, type of hospital
Krotneva, 2014 (42)	Prospective cohort study	Canada	3180; mean age 77 yrs	ER+, \geq 1 year of medical service history, initiated HT within 1 year of BCS	5 yrs	TAM, AI	MPR \geq 80%	No more than 60 days between rx fills or in tx gaps	Number of prescription medications at baseline	<i>Non-persistence:</i> HR= 0.93 95% CI 0.92, 0.95 per unit increase in number of prescription items	Age, are of residence, comorbidity, new medication initiated, radiotherapy, hospital admissions
Markkula, 2012 (37)	Prospective cohort	Sweden	417; median age 60 yrs, range 25-99	Patients \geq 1 yr of follow up, had not received neoadjuvant treatment, advised to use HT, ER+, not been treated for another type of cancer in the previous 10 years	2 yrs	TAM, AI	Declined treatment, MPR > 80% from medical chart, patient questionnaire	Stopped treatment upon follow up from medical chart, patient questionnaire	Number of medicines for comorbidities from questionnaire excluding complementary taken in the last week	<i>Adherence and persistence:</i> ≥ 2 v < 2 at 1y: OR=1.01, 95% CI 0.54, 1.89 ≥ 2 v < 2 at 2y: OR=0.84, 95% CI 0.12, 1.63	No adjustment
Partridge, 2003 (35)	Retrospective cohort	US	2,378; mean age 75.4 yrs; 83% White; 63% locally staged disease	Continuously enrolled in state Medicaid prgm during study period; age \geq 18 yrs; fill at least one TAM rx; history of definitive BC surgery	1-4 yr	TAM	MPR \geq 80%, proportion of days before any evidence of recurrence or new BC or any TAM adverse event	Not measure	Number of other prescription drugs used	AOR= 1.03, 95% CI 1.0, 1.04 per item increase	Age, race, surgery, oncology provider, Charlson score, outpatient services, days hospitalised
Atkins, 2006 (47)	Cross-sectional - Semi-structured interviews	UK	131; mean age 59.4, 63% married, 53% at least secondary level education	2 yrs post dx, stable disease, English speaking	2 yrs	TAM, AI	Self-report: Forgetting to take medication (non-intentional adherence) and choosing not to take medication (intentional adherence)	Not measured	Number of other prescription drugs used	No association	No adjustment

Primary author, year	Study type	Country	Participant characteristics	Eligibility criteria	Time period	HT	Adherence	Persistence	Number of medications	Results	Covariates
Simon, 2014(50)	Cross-sectional	Canada	161; mean age 56.6 yrs	One clinic, treated for ER+ BC	6 m	TAM, AI	Self-report interview, 80% adherence intake, 100% adherence intake	Not measured	Chronic medication for comorbidities	80% adherence: 0.001 (0.00, 100.00) 100% adherence: 0.28 (0.03, 2.43)	Age, menopause status, HT, chemotherapy, tumour status, node status, mastectomy, HRT, history of BC
Huiart, 2013(43)	Prospective cohort	France	382 women, mean age 71.8 yrs	≥ 1 rx for AI	Median period 3.2 yrs	AI	MPR ≥ 80%	First tx discontinuation lasting more than 3 consecutive months	Polypharmacy (> 4 meds) (Yes or No)	<i>Non-persistence</i> : HR= 0.40, 95% CI 0.18, 0.88	Complementary/Alternative therapy, comorbidities
Lash, 2006 (61)	Prospective cohort	US	462; 58% aged 70-79 yrs; 87% ER+ tumours	Diagnosed with stage I-IIIa BC; age ≥ 65 yrs; ER+/indeterminate tumours; initiated TAM	63 m	TAM	Not measured	Self-report continuing with treatment at each interview 3, 6, 15, 27, 39, 51, and 63 months	Number of prescription medications at baseline	3 meds vs ≤ 2: RR=0.79 95% CI 0.48, 1.3 4 meds vs ≤ 2: RR=0.59, 95% CI 0.33, 1.1 ≥ 5 meds vs ≤ 2: RR= 0.62, 95% CI 0.40, 0.96 ARR= 1.20 95% CI 1.0, 1.4 per additional prescription	Age, enrolment site ER status, presence of severe TAM side effects, patients' decisional balance scale
Fink, 2004 (64)	Prospective cohort	US	516; majority aged ≥ 70 yrs, high school graduates	Diagnosed with stage I-IIIa BC, no prior history of BC; age ≥ 65 yrs; ER+ tumours; prescribed and taking TAM	27 m	TAM	Not measured	Self-report continuing with treatment at each interview. Subset validated against pharmacy records	Number of prescription medications, including TAM classified as 0 to 2, 3, 4, and ≥5	3 meds vs ≤ 2: RR=0.66 95% CI 0.34, 1.2 4 meds vs ≤ 2: RR=0.47, 95% CI 0.25, 0.88 ≥ 5 meds vs ≤ 2: RR= 0.49, 95% CI 0.27, 0.98	No adjustment
Friese, 2013 (68)	Prospective cohort	US	743; mean age 58.9 yrs	Age 20-79 yrs, Stages I-III BC, ER+ or PR+	4 yrs	TAM, AI	Not measured	Self-report continuing with treatment	Number of medications taken in the week prior to the follow up survey (4 years since dx) classified as 0, 1 and ≥2	≥2 vs 0 to 1: AOR=4.19 95% CI 2.28, 7.68	Age, race, SEER stage, SEER grade, worry about recurrence, primary oncology provider
Van Herk-Sukel, 2010(56)	Retrospective cohort	Netherlands	1,725; 1,451 TAM	BC Stage I-IIIa, HT within 1 yr dx, time period 1998-2006	5 yrs	TAM, AI	Not measured	No more than 60 days between rx fills or in tx gaps, also looked at < 90 days and < 180 days	Number of different drug classes (ATC level 1)	2-3 vs <2: AOR=0.82 95% CI 0.62, 1.07 4-5 vs <2: AOR=0.89 95% CI 0.68, 1.17 6+ vs <2: AOR=1.15 95% CI 0.89, 1.49	Age, tumour size, number of comorbidities

Primary author, year	Study type	Country	Participant characteristics	Eligibility criteria	Time period	HT	Adherence	Persistence	Number of medications	Results	Covariates
Barron, 2007(60)	Retrospective cohort	Ireland	2,816; one-third aged ≥ 75	Aged ≥ 35 yrs, commenced TAM as initial HT between Jan 2001- Jan 2004	1- 3.5 yrs (median 2.7 yrs)	TAM	Not measured	No more than 180 days between rx fills after index date, excluded treatment switchers, those lost to follow up (no prescription for any item)	Mean number of pharmacological agents in year before Tam	1-3 vs ≤ 1 : AOR= 0.84, 95% CI 0.71, 1.00 >3-5 vs ≤ 1 : AOR=0.76, 95% CI 0.61, 0.94 >5 vs ≤ 1 : AOR=0.72, 95% CI 0.58, 0.92	Age, antidepressant use, number of cognitive or functional impairments

BC breast cancer, *m* months, *yrs* years, *AI* aromatase inhibitor, *TAM* tamoxifen, *MPR* medication possession ratio, *tx* treatment, *rx* prescription, *dx* diagnosis, *ER/PR+* estrogen or progesterone receptor positive, AOR adjusted odds ratios, OR odds ratio, HR hazard ratio, CI confidence intervals

Table 4: Follow up with GP vs oncologist and adherence and persistence to adjuvant hormonal therapy among women with breast cancer in clinical practice settings (TDF domain Social Influences)

Primary author, year	Study type	Country	Participant characteristics	Eligibility criteria	Time period	HT	Adherence	Persistence	Follow up	Results	Covariates
Neugut, 2011(29)	Retrospective cohort	US	22,160 (8,110 <65 yrs, 14,050 ≥ 65 yrs)/mean age 67.4 yrs, postmenopausal: 89.5% white, 74.3% married	Diagnosed with early stage BC; filled at least two 90 day mail order rx for an AI bwt 2007 - 2008: age ≥ 50 yrs	2 yrs	AI	MPR ≥ 80%	Minimum 45 days elapsed from prior rx without a refill, with no subsequent refills before end of study period	Follow up with primary care physician vs. oncologist	< 65 yrs: AOR=0.91 95% CI 0.71,1.16 (adherence) > 65 yrs: AOR= 0.81 95% CI 0.69, 0.96 (adherence) 65 yrs: AOR=0.82 95% CI 0.69,0.99 (persistence) > 65 yrs: AOR= 0.79 95% CI 0.71, 0.89 (persistence)	Age, race, marital status, income, region, 90 day out of pocket cost, no of other prescriptions, comorbidities
Danilak, 2013 (39)	Retrospective cohort	Canada	346; majority aged 35-74 yrs	Initiated adjuvant endocrine therapy, HR+, node positive or intermediate to high-risk node negative patients, completed primary surgery and chemotherapy.	2 yrs	TAM, AI	After ≥2 yrs; MPR ≥ 80%	Discontinued therapy within 3 m, 6 m, 1 yr and 2 yrs	Cross Cancer Institute follow-up times of less than 1 yr (discharged to family physician)	AOR= 2.4 95% CI 1.0, 5.5 (non-persistence)	Age, residence (near centre), Chemotherapy, menopausal status, nodal status, surgery, radiation, pharmacy call back
Alkhayyat, 2012 (48)	Case-control	Canada	160; (80 in each cohort), median age 62.5 yrs	ER+, therapy ≥ 1 yr	5 yrs	TAM, AI	Adherent >80%, non-adherent < 50%, semi-adherent 50-80%	Not measured	Follow up with primary care physician vs. oncologist	HR= 0.7 (p > 0.999)	No adjustment

Primary author, year	Study type	Country	Participant characteristics	Eligibility criteria	Time period	HT	Adherence	Persistence	Follow up	Results	Covariates
Güth, 2008 (66)	Retrospective hospital based cohort	Switzerland	325; mean age 67.3 yrs (range 47-95); majority stage I-IIA	Diagnosed with non-metastatic BC, treated with surgery at author institution, ER/PR+ tumours, postmenopausal	5 yrs	TAM, AI	Not measured	Patients who discontinued per medical record	Follow up with primary care physician vs. oncologist	OR= 2.78 95% CI 1.29, 5.98	No adjustment
Güth, 2012 (54)	Retrospective hospital based cohort	Switzerland	685; mean age 60 yrs, diagnosed with ER+ BC 1997-2008 at a university teaching hospital	HR+ non-metastatic invasive BC, received surgical therapy between 1997-2008.	Minimum 36 m	TAM, AI	Not measured	Persistence-discontinue treatment except for BC recurrence, physician decided to stop treatment, patients who died per medical record	Follow up with primary care physician vs. oncologist	AOR= 0.66 95% CI 0.49, 0.88	Year of the initial diagnosis, patient's age at diagnosis, primary surgical therapy, tumor stage, receipt of previous chemotherapy and/or postoperative radiation
Hadji, 2013 (58)	Cross-sectional	Germany	12,412; mean age 62 yrs TAM, 66 yrs AI	BC, first rx for TAM, AI Oct 2001-Dec 2010 (follow up time \geq 365 days before index date), \geq 18 years	3m to 3 yrs from index date	TAM, AI	Not measured	90 days without hormonal therapy	Follow up with primary care physician vs. oncologist	HR=0.44 95% CI 0.42, 0.46	Age, type of health insurance, patient and physicians residency, baseline co-morbidities (osteoporosis, diabetes, depression) and co-medication (bisphosphonates for osteoporosis)

BC breast cancer, m months, yrs years, AI aromatase inhibitor, TAM tamoxifen, MPR medication possession ratio, tx treatment, rx prescription, dx diagnosis, ER/PR+ estrogen or progesterone receptor positive, AOR adjusted odds ratios, OR odds ratio, HR hazard ratio, CI confidence intervals

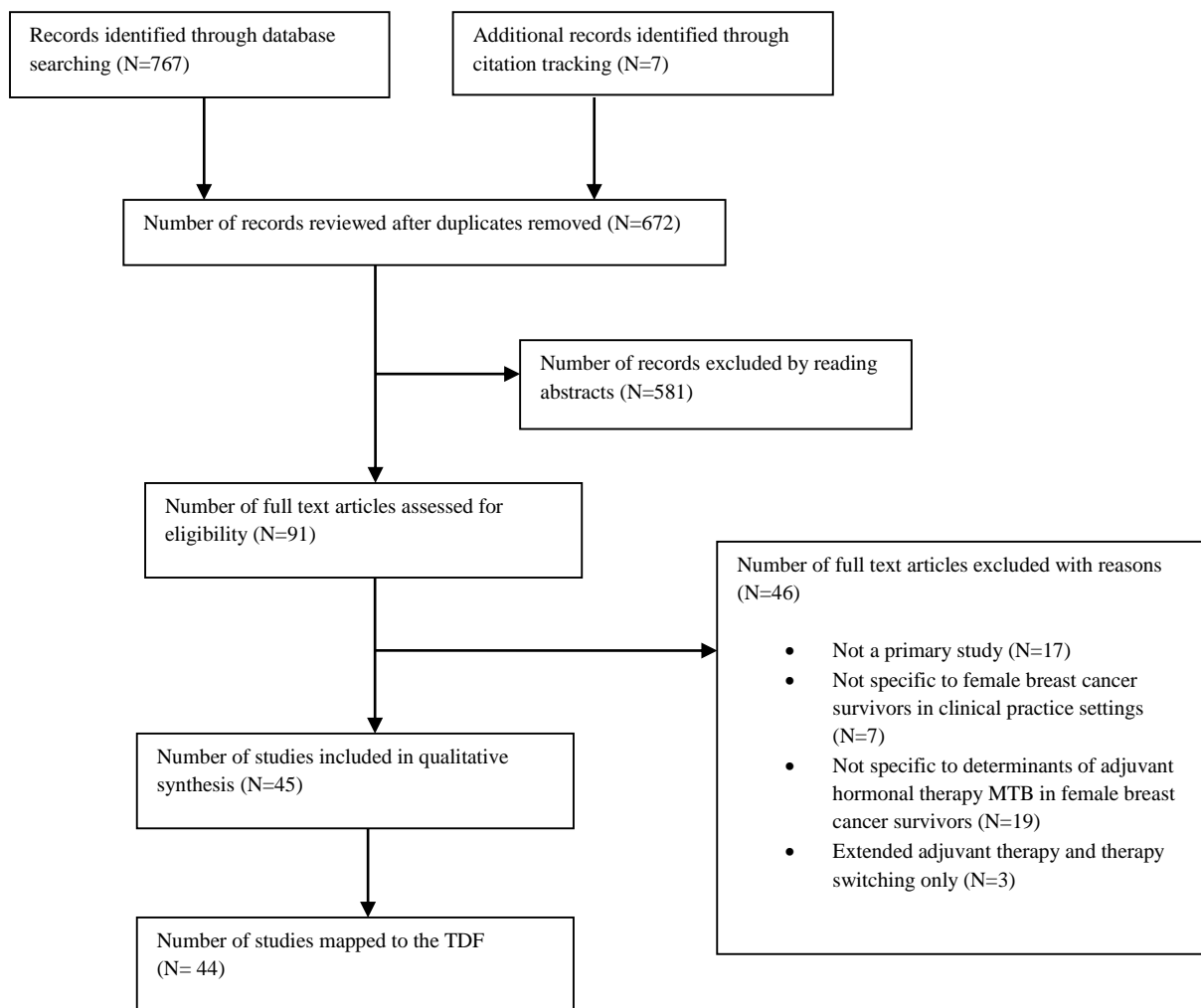
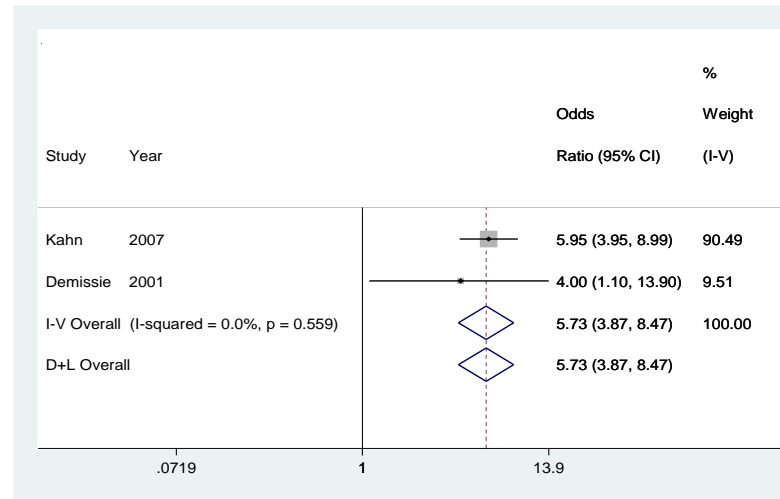
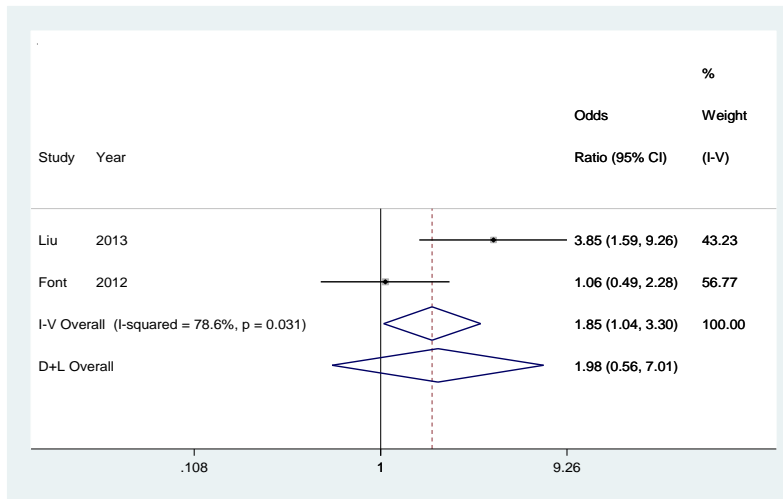
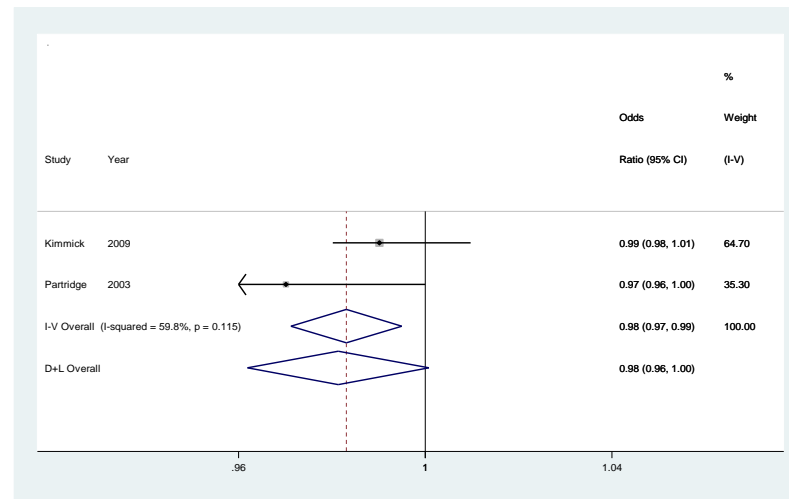


Figure 1: PRISMA Flow Diagram: selection of studies for systematic review

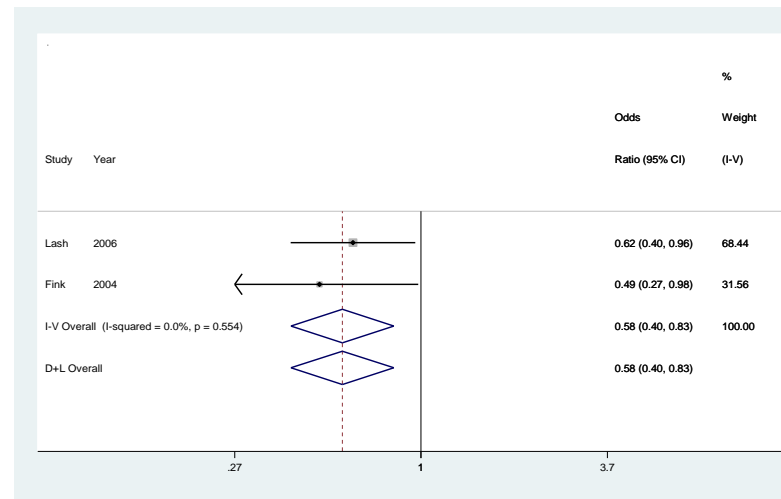


Self-report non-adherence and side-effects

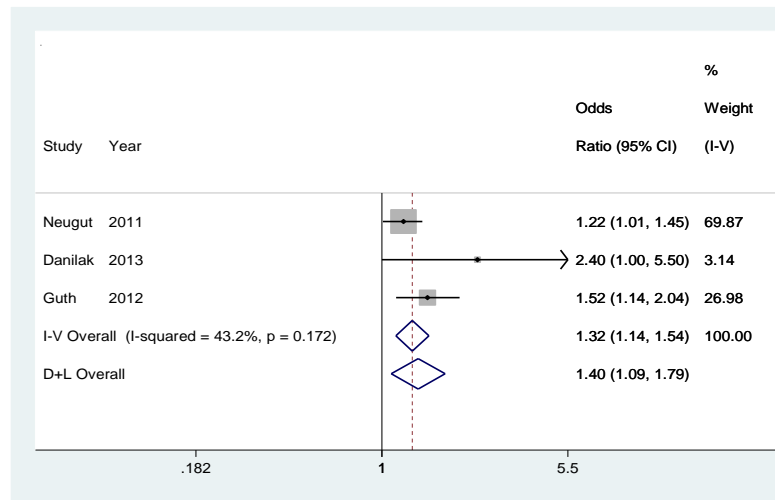


Non-adherence (MPR <80%) and number of medications

Self-report non-persistence and side-effects



Self-report non-persistence and number of medications



Non-persistence (treatment gaps) and follow up with GP vs oncologist

Figure 2: Forest plots: Side-effects, number of medications and follow up with GP vs. oncologist and non-adherence and non-persistence to adjuvant hormonal therapy

Notes: Non-adherence and side-effects: Populations different- Liu 2013 study predominantly low education and low income. Different time periods, Liu 2013 study was 36 m vs. 5 yrs for Font 2012 study.
Non-persistence and side-effects: Different time periods, Kahn 2007 study was 4 yrs vs. 21 m for Demissie 2001 study. Kahn 2007 study analysed severe side-effects only. Including Fink 2004 study and Bowles 2012 study: Heterogeneity chi-squared = 25.87 (d.f. = 3) p = 0.000, I² = 88.4%. Test of ES=1 : z= 7.65 p = 0.000. Fink 2004 study did not adjust for any covariates and Bowles 2012 study measured specific side-effects (hormone, bone related)
Non-adherence and number of medications: Both studies measured per unit increase in number of medications. Kimmick 2009 study was 1 yr vs 1 to 4 yrs Partridge 2009 study. Kimmick 2009 study measured adherence to TAM, AI. Partridge 2009 measured adherence to TAM only.
Non-persistence and number of medications: Both studies measured ≥ 5 medications versus ≤ 2 medications. No adjustment for covariates.
Non-persistence and follow-up with GP vs oncologist: Neugut 2011 study included women < 65 years only as similar to mean age in Danilak 2013 and Guth 2012 studies

