

# GUNPOWDER GUIDE

*EXPLORE GUNPOWDER FALLS, HART-MILLER ISLAND AND NORTH POINT STATE PARKS, ALONG WITH THE NORTH POINT STATE BATTLEFIELD, AND THE TORREY C. BROWN RAIL TRAIL*



**Bunker Hill Trail**  
Photo by Andrea Bucher

# Table of Contents

Background Information .....	2
Volunteering and Passes .....	3
Seasonal Jobs.....	4
Programming and Leave No Trace Ethics.....	6
Mill Pond Cottage, Sparks Bank Nature Center, and Camping.....	7
Hereford Area and Maps .....	8, 10-11
Torrey C. Brown Rail Trail (formerly the N.C.R.) and Maps ...	9, 12-13
Sweet Air Area and Maps .....	14-15
Central Area and Maps .....	16-20
Jerusalem Mill .....	21
Hammerman Area and Maps.....	22-24
Dundee Creek Marina, Fishing Area & Archery Range.....	25
Hart-Miller Island and Maps .....	26-27
North Point State Park and Map.....	28-30
North Point State Park Battlefield .....	31
Park-wide Map .....	32
Biking .....	9, 14, 16, 25, 28
Boating .....	25
Camping.....	7, 26
Canoeing/Kayaking .....	8, 22, 25
Fishing .....	8, 14, 16, 25, 28
Hiking.....	8-9, 14, 16, 22, 25-26, 28
Pavilions.....	22
Picnicking .....	21-22, 28

## Gunpowder Falls State Park

2813 Jerusalem Road  
P.O Box 480  
Kingsville, MD 21087  
410-592-2897

## North Point State Park

8400 North Point Road  
Edgemere, MD 21219  
410-477-0757

## Hammerman Beach Area

7200 Graces Quarters Road  
Middle River, MD 21220  
410-335-3461

## Dundee Creek Marina

7400 Graces Quarters Road  
Middle River, MD 21220  
410-335-9390

## Monkton Station

1820 Monkton Road  
Monkton, MD 21111  
410-472-3144

---

## BACKGROUND INFORMATION

Established in 1959 to protect the Gunpowder River and the Big and Little Gunpowder valleys, Gunpowder Falls State Park is Maryland's largest state park. Comprised of over 18,000 acres in Harford and Baltimore counties, Gunpowder's narrow corridors host a varied topography ranging from tidal wetlands to steep and rugged slopes. Gunpowder features more than 120 miles of trails, protected Wildlands, historic sites, fishing opportunities, canoeing/kayaking streams, a swimming beach and a full service marina.

Gunpowder Falls State Park is divided into different areas: Hereford, Sweet Air, Central, Hammerman, and Dundee Creek. The park also operates North Point and Hart-Miller Island State Parks, North Point State Battlefield and the Torrey C. Brown Rail Trail .

## PARK HEADQUARTERS

Gunpowder Falls State Park's headquarters is located in the restored gristmill at Jerusalem Mill Historic Village. The office is open from 8:00 a.m. to 3:30 p.m., Monday through Friday (closed weekends and state holidays). Call 410-592-2897 for more information or to speak with park staff.

## PARK PASSES

**MARYLAND PASSPORT—\$75 (MD resident) / \$100 (out of state resident) / \$35 (MD resident first responders)**

Entitles unlimited day-use admission for everyone in the vehicle (up to 10 people) to Maryland's state parks and facilities; unlimited boat launching at all state park facilities; and a 10 percent discount on state-operated concession items and boat rentals.



## **GOLDEN AGE PASS—\$10**

This pass, good for life, entitles adults ages 62 and older free day use entry (cardholders only) to all state parks that charge service fees. This pass is valid for half price camping Sunday through Thursday (excluding holidays). The boat launch fee at Maryland State Parks is eliminated for seniors with the Pass.

## **YOUTH GROUP PASS—NO CHARGE**

This pass, good for two years, entitles youth groups free day use entry to Maryland State Parks and free camping in those parks that have designated "Youth Group" areas, subject to site availability.

## **UNIVERSAL DISABILITY PASS—NO CHARGE**

Entitles free lifetime entry to State Parks for individuals with disabilities.

## **Volunteer Opportunities**

With over 18,000 acres and 120 miles of trails there are ample opportunities for you to get involved. Contact our office at 410-592-2897 and we will connect you with a group or opportunity that piques your interest.

### ***PARK FRIENDS AND VOLUNTEERS***

Gunpowder Falls State Park is thankful for the support of its affiliated non-profit Friends of groups. These 501 (c)(3) organizations are always seeking new members. Consider joining and supporting your State Park today!

#### ***Friends of Jerusalem Mill***

*jerusalemmill.org*  
410-877-3560

#### ***Friends of Hart-Miller Island State Park***

*friendsofhartmillerisland.com*

#### ***Gunpowder United Mountain Bike Operators (G.U.M.B.O.)***

*littlegunpowder.com*

#### ***Graham Equestrian Center***

*grahameq.org*  
410-663-4445

#### ***NCR Hereford Volunteer Association***

*ncrtrail.org*

#### ***North Point State Park Volunteers***

*northpointstatepark.homestead.com*  
410-477-0757



Scan the QR codes throughout the guide to learn more about each area!

The Department of Natural Resources leads Maryland in securing a sustainable future for our environment, society, and economy by preserving, protecting, restoring, and enhancing the State's natural resources.

Wes Moore, Governor | Josh Kurtz, Secretary  
Maryland Park Service  
580 Taylor Avenue, E-3  
Annapolis, MD 21401

800-830-3974  
Toll free in Maryland: 877-620-8367  
Out of state call: 410-260-XXXX  
TTY Users call via the MD Relay

[dnr.maryland.gov](http://dnr.maryland.gov)  
[customerservice.dnr@maryland.gov](mailto:customerservice.dnr@maryland.gov)  
Publication Date:  
Publication Number:



# Join our Team

APPLY FOR A SEASONAL SUMMER POSITION



Join our team of professional men and women. Visit the Maryland Park Service website then click on the Park Jobs link on the left hand side. You may also scan the QR code to view current statewide job openings.

Call Park Headquarters for more information at 410-592-2897!

## SEASONAL PARK RANGER

Seasonal Park Rangers assist with park operations and maintenance. Daily responsibilities include park patrol, customer service, opening/closing areas, emergency response, picking up litter and general maintenance of park grounds and facilities. Applicants must be able to work weekends, holidays, and evenings.



## SEASONAL MAINTENANCE WORKER

Seasonal Maintenance staff are responsible for the maintenance of park grounds and facilities. Daily responsibilities include trash pickup, cleaning pavilions and restrooms, trail work, mowing grass and customer service. Applicants must be able to work weekends, holidays, and evenings.

## BEACH LIFEGUARD

Lifeguards are responsible for ensuring visitors have a safe and enjoyable recreational experience by patrolling and surveying the swimming area for hazards and dangerous behavior. Work involves administering first aid, providing information to visitors, responding to emergencies and maintaining the beach area. Applicants must possess a valid lifeguarding certification and be able to work weekends and holidays.



## CONCESSION ATTENDANT

Concession Attendants provide customer service by answering visitors questions, as well as preparing food, operating a cash register, maintaining inventories of supplies, assisting with litter pickup and cleaning facilities. Applicants must be able to work weekends, holidays, and evenings.



# Gunpowder Scavenger Hunt

VISIT GUNPOWDER, NORTH POINT AND HART-MILLER ISLAND TO COMPLETE THE QUEST!

Complete the Gunpowder scavenger hunt for the corresponding areas of Gunpowder, North Point or Hart-Miller Island! Check the box once you find the items associated with each area. Please remember to always leave what you find and do not disrupt wildlife or plant life. Always stay on marked trails when scavenging for items!

## SWEET AIR

- Horse
- Fern
- Deer tracks
- Moth
- Pine cone
- Bird house



## NORTH POINT

- Beaver
- Great Blue Heron
- Pine tree
- Leaf
- Squirrel
- Frog

## HART-MILLER ISLAND

- Osprey
- Pine needle
- Fish
- Fox
- Duck
- Seagull

## HAMMERMAN

- Monarch butterfly
- White-tailed deer
- Oak tree
- Driftwood
- Cormorant
- Bald Eagle

## JERUSALEM MILL

- River
- Grain of sand
- Small pebble
- Fire ring
- Barn
- Wild flowers

## HEREFORD

- Trout
- Moss
- Worm
- Bridge
- Fallen tree
- Mushroom



# Programs and Events

EXPLORE MARYLAND'S LARGEST STATE PARK

Naturalist and volunteer-led programs and events occur throughout Gunpowder, North Point, and Hart-Miller Island year-round. Read below for more information!

Park staff and volunteers lead a variety of programs and events throughout the year highlighting the rich natural, cultural, historical, and recreational resources located within the park. Guided hikes, canoe trips, stargazing, and other educational and recreational programs occur mainly between Memorial Day and Labor Day in locations throughout the park.



Photo by Brooke Bartko



Photo by Stephen Badger

Gunpowder Falls State Park's various volunteer groups also hold annual events throughout the year, such as the NCR/Hereford Volunteers Association's *Bike Through History* programs on the Torrey C. Brown Rail Trail and North Point State Park Volunteers' *Youth Fishing Rodeo*. The Friends of Jerusalem Mill also host living history demonstrations in the Historic Jerusalem Mill Village year-round, Saturdays and Sundays from 1 p.m. – 4 p.m.



Gunpowder Falls State Park Nature Programs & Events: [www.meetup.com/Gunpowder-Falls-State-Park-Nature-Programs-Events/](http://www.meetup.com/Gunpowder-Falls-State-Park-Nature-Programs-Events/)



For up-to-date information and events, follow us on twitter [@MDStateParks](https://twitter.com/MDStateParks)

## LEAVE NO TRACE ETHICS

**Help keep your public lands beautiful:**

1. Plan Ahead and Prepare
2. Travel and Camp on Durable Surfaces
3. Dispose of Waste Properly
4. Leave What you Find
5. Minimize Campfire Impacts
6. Respect Wildlife
7. Be Considerate of Other Visitors





# Mill Pond Cottage

ENJOY A VACATION CLOSE TO HOME!

Choose the Mill Pond Cottage for your next getaway and have a relaxing time in close proximity to an array of outdoor opportunities. Located in the scenic Hereford Area of Gunpowder Falls State Park, the cottage offers true peace and quiet in a private, streamside retreat.

Mill Pond Cottage sleeps eight people maximum, has a full kitchen, central air-conditioning and heat, propane fireplace and a screened-in porch! Anglers will love the two-minute walk to one of the best trout fishing areas in the country. A mere 30-minute drive from Baltimore can make you feel like you're a thousand miles away without the travel hassles.

We'd love to help you plan your visit, call 410-592-2897 for more information.

---

## Camping at Gunpowder

### YOUTH GROUP CAMPING

Overnight camping is available at Camp Wood and Camp Cone for organized **youth groups**. Reservations are required. Call the central reservation system at 1-888-432-2267 for availability.



Photo by Eileen McVey

---

## Monkton Station

The restored 1898 station serves as a museum as well as a Ranger Station in the summer season. It's a great place to learn about the history of the former Northern Central Railway.

### HOURS

The Station is open 9 a.m. — 4 p.m. Saturday and Sunday from Memorial Day weekend through Labor Day.

**DIRECTIONS TO MONKTON STATION** - From I-83, take exit 27 and travel east on Mt. Carmel Road (Route 137). Turn right on York Road and make an immediate left onto Monkton Road. Follow until it crosses the Big Gunpowder Falls. Monkton Station will be on your left. Parking is extremely limited, so arrive early! (1820 Monkton Road, Monkton, MD 21111)

# Hereford Area

DISCOVER ONE OF MARYLAND'S FINEST TROUT STREAMS



Located in northern Baltimore County, the Hereford Area's 3,620 acres feature a scenic wilderness setting preserved under state wildlands status for nature appreciation and outdoor adventures. Anglers can enjoy a nationally renowned special trout management area located downstream from Prettyboy Reservoir. The Big Gunpowder Falls also attracts canoeing, kayaking and tubing enthusiasts throughout the year.



Photo by Seth Hinder

## HOURS

Sunrise to sunset.

**Please be respectful to others and take your trash with you.**

**Alcohol is prohibited**

## TRAILS

Hikers and horseback riders are welcome on the Hereford Area's trails. **Bicycles are strictly prohibited.** Please stay on designated trails. The trails in this area are steep, rocky and potentially slippery. Closed toe footwear is recommended.

## FISHING

The special trout management area is catch and release with artificial lures only. [A Maryland Non-Tidal Fishing License and a trout stamp are required for anyone 16 years-of-age or older.](#)

## RIVER RECREATION

The Big Gunpowder River offers opportunities for paddlers of all experience levels. The difficulty ranges from Class I, suitable for novice paddlers, to Class III, suitable for advanced paddlers, depending on recent weather events. The most difficult section lies between Falls Road and York Road. The section downriver from York Road is considered easier. Downriver of Big Falls Road is private property, so please respect land owners and stay in your watercraft.

Personal flotation devices are required for all persons tubing, canoeing, and kayaking on the river. Helmets are recommended for canoers and kayakers. Water temperature ranges from 45 to 50 degrees year-round.

## What is a Wildlands area?

Wildlands are areas of state-protected land that have retained their wilderness character or contain rare species of plant or animal life. Wildlands are managed for passive recreation only, including hiking, hunting, fishing, and horseback riding.

There are three types of wildland areas, Gunpowder's being Type 2. Type 2 areas have importance for education, research and appreciation of the natural environment.

## Gunpowder's Wildlands

*Check out our wildlands:*

- Gunpowder Falls, Panther Branch and Mingo Branch in Hereford
- Sweathouse Branch in Central
- Black Marsh in North Point

**Ranger's Recommendation**  
Bunker Hill to Mingo Forks Trail

**DIRECTIONS TO THE HEREFORD AREA** - The Hereford Area is a noncontiguous area with multiple access points. Please visit the Hereford webpage (accessible by scanning the QR code above) to find directions to popular parking areas and trailheads.



# Torrey C. Brown Rail Trail

EXPLORE THIS RAILS-TO-TRAILS HALL OF FAME INDUCTEE



Named for the third Secretary of the Department of Natural Resources, the Torrey C. Brown Rail Trail follows 19.7 miles of the former Northern Central Railway in northern Baltimore County.

**Please be respectful to others and take your trash with you.**

**Alcohol is prohibited.**

## HOURS

Sunrise to sunset.

## USING THE TRAIL

The Torrey C. Brown Rail Trail extends from Ashland, MD north to the Maryland-Pennsylvania line, passing through the historic communities of Phoenix, Monkton, White Hall, Bentley Springs and Freeland. Hikers, joggers, bicyclists, horseback riders and pets on leashes are welcome. Visitors wishing to leave a vehicle in parking areas overnight for out of state travel should contact the park at (410) 592-2897 a minimum of two weeks in advance to obtain approval. Trail users are welcome to continue their journey north into Pennsylvania on the York County Heritage Rail Trail.

## ELECTRIC BIKES

Class 1 (only) electric bicycles are permitted on the Torrey C. Brown Rail Trail. Class 1 electric bicycles are regulated the same as all other bicycles and are subject to all applicable rules and regulations regarding operation and safety equipment. As per 11-117.1 of the Transportation article, Annotated Code of Maryland, a class 1 electric bicycle is equipped with a motor that provides assistance only when the rider is pedaling and ceases to provide assistance when the bicycle reaches a speed of 20 mph.



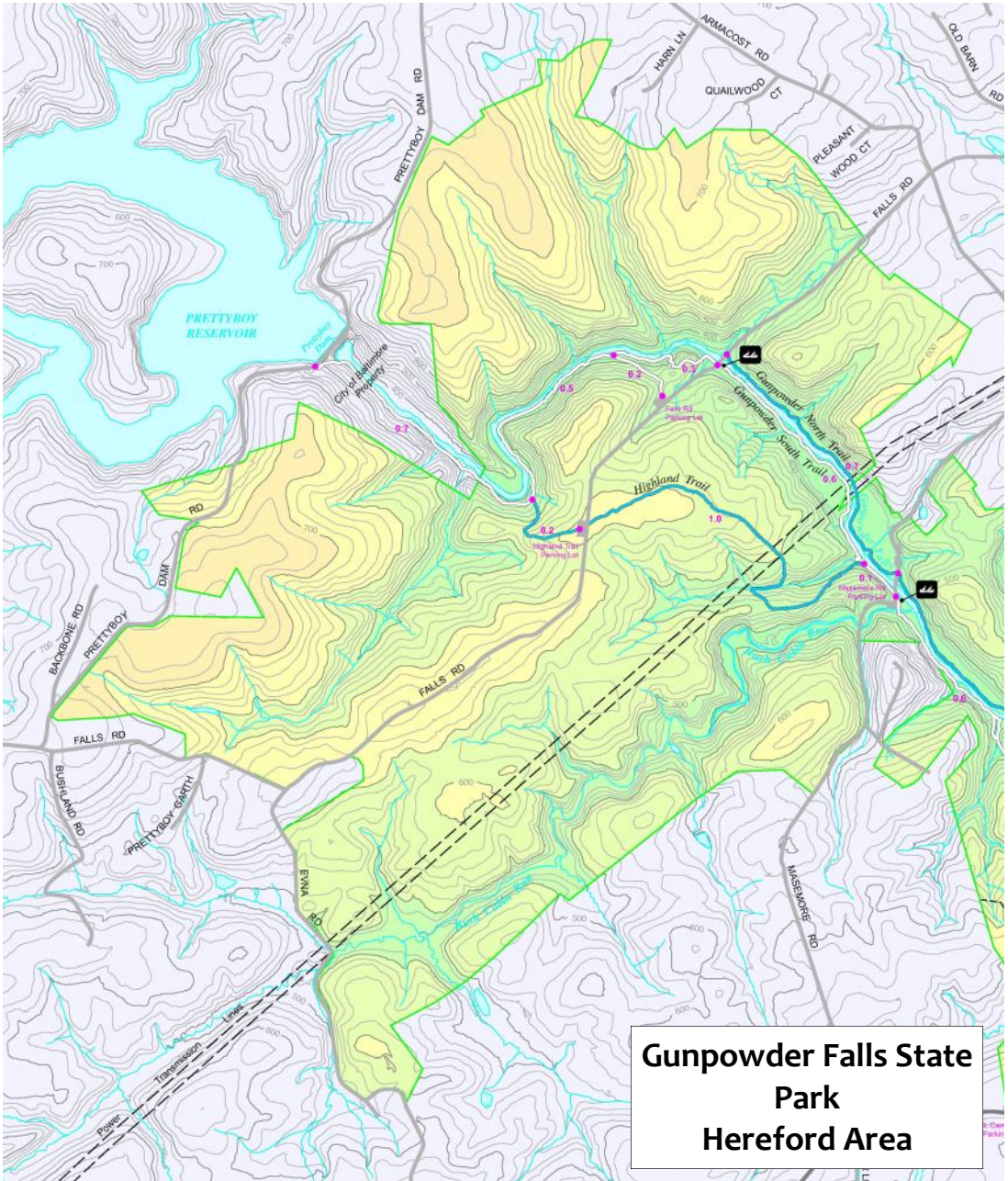
## SHARE THE TRAIL

- Please remember that all bicyclist yield to horses and pedestrians, and that pedestrians should also yield to horses.
- The maximum speed limit is 15 mph.
- Travel on the right side of the trail and give an audible signal before passing any other trail user.
- Bicyclists should dismount and walk bikes across roads.
- Please refer to signs posted at parking lot trailheads for additional information.

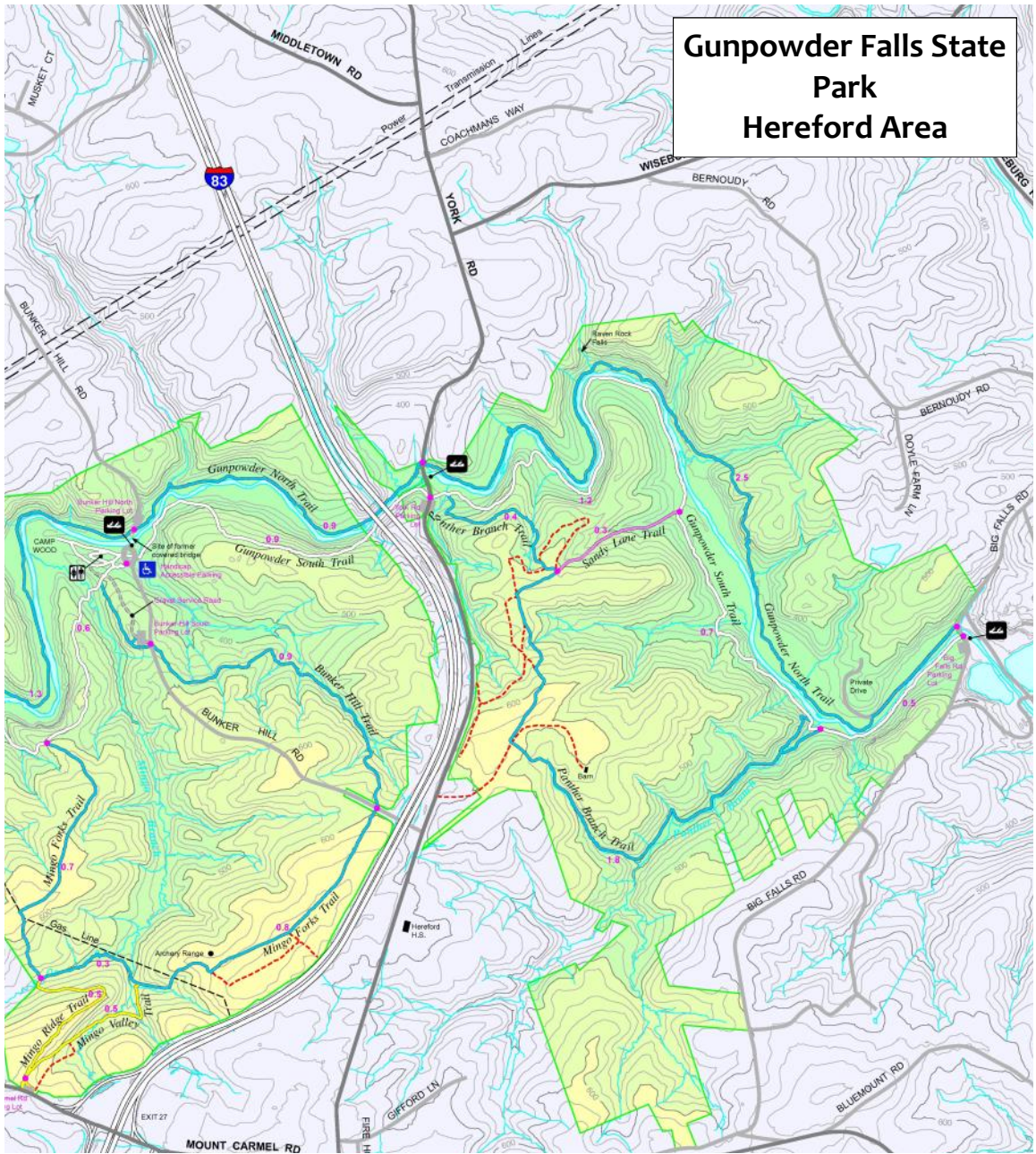


Photo by Andrea Bucher

**DIRECTIONS TO FREELAND PARKING LOT- From I -83, take exit 36 and turn right onto MD-439 toward the Maryland Line. Take a slight right onto MD-45 N. Turn left onto Freeland Rd at the traffic light. The Freeland parking lot will be on your right hand side about 2 miles down the road (1072 Freeland Road, Freeland, MD 21053).**

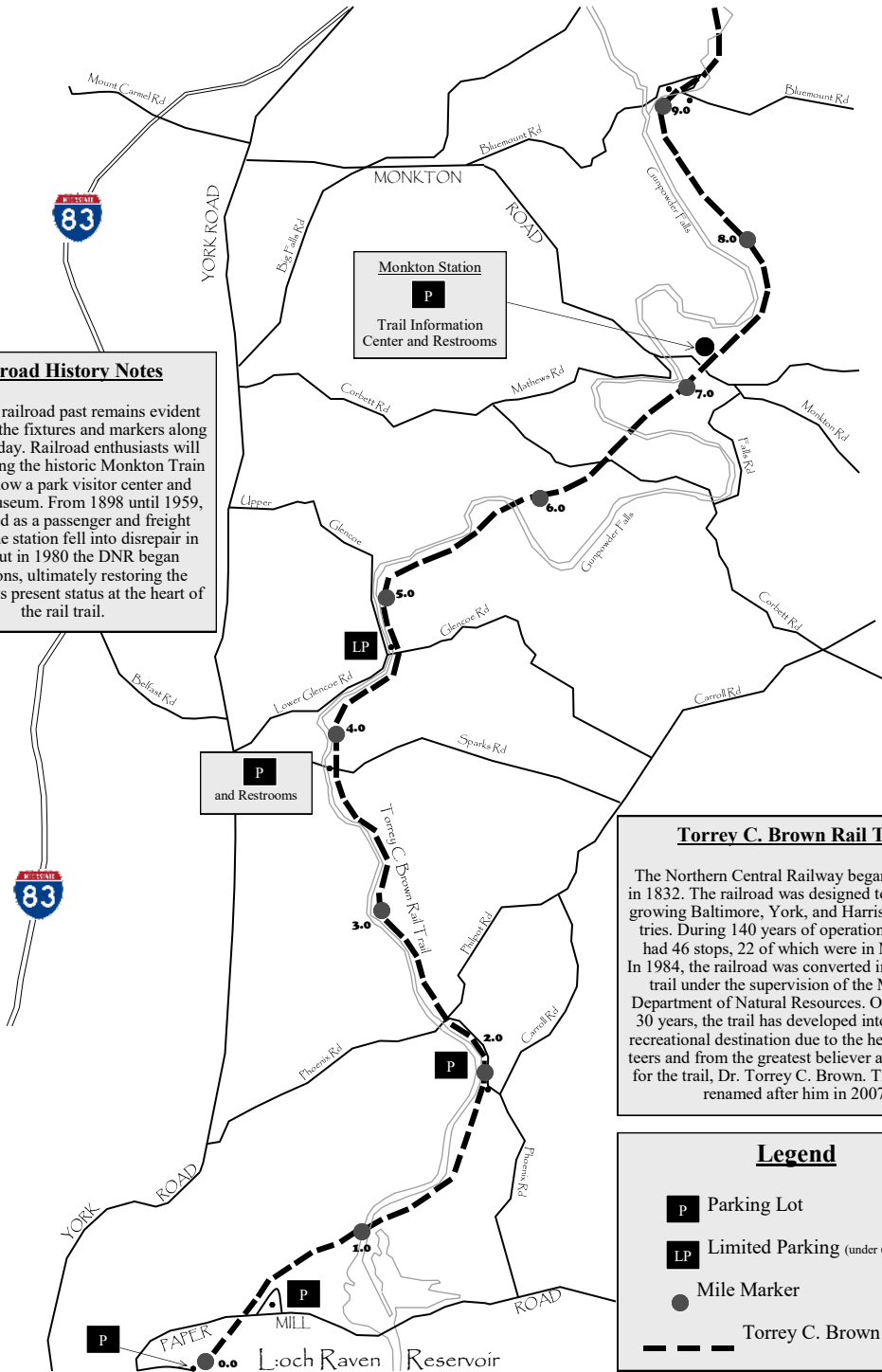


# Gunpowder Falls State Park Park Hereford Area



**Railroad History Notes**

The trail's railroad past remains evident in many of the fixtures and markers along the trail today. Railroad enthusiasts will enjoy visiting the historic Monkton Train Station, now a park visitor center and railroad museum. From 1898 until 1959, it operated as a passenger and freight station. The station fell into disrepair in 1959, but in 1980 the DNR began renovations, ultimately restoring the station to its present status at the heart of the rail trail.

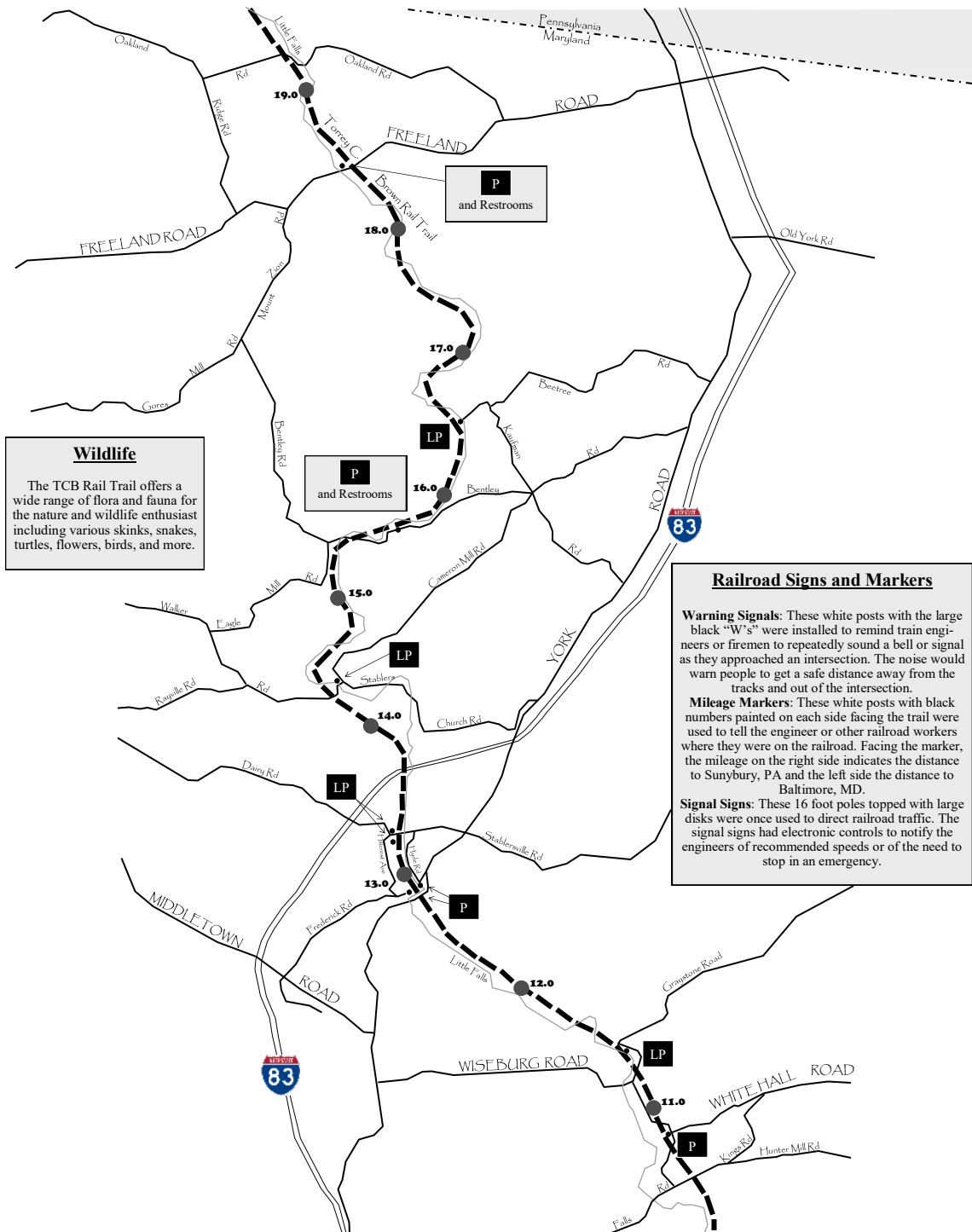


**Torrey C. Brown Rail Trail**

The Northern Central Railway began operation in 1832. The railroad was designed to service the growing Baltimore, York, and Harrisburg Industries. During 140 years of operation, the NCR had 46 stops, 22 of which were in Maryland. In 1984, the railroad was converted into the NCR trail under the supervision of the Maryland Department of Natural Resources. Over the past 30 years, the trail has developed into a popular recreational destination due to the help of volunteers and from the greatest believer and advocate for the trail, Dr. Torrey C. Brown. The trail was renamed after him in 2007.

**Legend**

- P Parking Lot
- LP Limited Parking (under 6 spots)
- Mile Marker
- Torrey C. Brown Rail Trail



### Wildlife

The TCB Rail Trail offers a wide range of flora and fauna for the nature and wildlife enthusiast including various skinks, snakes, turtles, flowers, birds, and more.

### Railroad Signs and Markers

**Warning Signals:** These white posts with the large black "W's" were installed to remind train engineers or firemen to repeatedly sound a bell or signal as they approached an intersection. The noise would warn people to get a safe distance away from the tracks and out of the intersection.

**Mileage Markers:** These white posts with black numbers painted on each side facing the trail were used to tell the engineer or other railroad workers where they were on the railroad. Facing the marker, the mileage on the right side indicates the distance to Sunbury, PA and the left side the distance to Baltimore, MD.

**Signal Signs:** These 16 foot poles topped with large disks were once used to direct railroad traffic. The signal signs had electronic controls to notify the engineers of recommended speeds or of the need to stop in an emergency.

# Sweet Air Area

AN IDEAL SPOT FOR HORSEBACK RIDING AND HIKING



With 1,250 acres, the Sweet Air Area is one of Gunpowder's largest exclaves. Sweet Air straddles the Little Gunpowder Falls, which makes up the border between Harford and Baltimore counties and includes over 18 miles of trail.

**Please be respectful to others and take your trash with you.**

*The entrance road to Sweet Air may be slippery in freezing weather. Four wheel drive is recommended in poor conditions.*

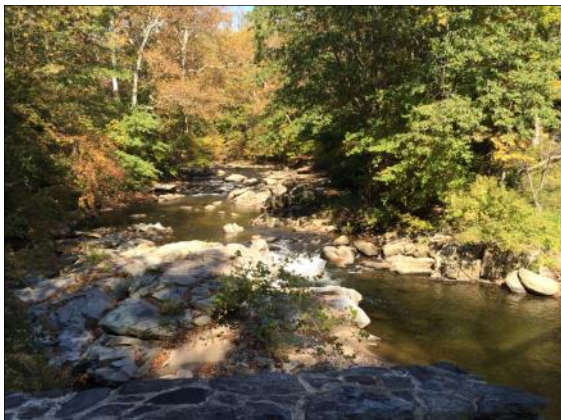
## HOURS

Sunrise to sunset.

## TRAILS

Hikers and pets on leashes are welcome on all of Sweet Air's 18 miles of trails. Mountain bikers and horseback riders are also welcome except on the Cody Jean and Red Dot Trails.

Please refrain from riding bicycles or horses on trails within 24 hours after a heavy rainfall event.



## Ranger's Recommendation

Cross Trail through the Black Forest

## PETS

Pets on leashes are welcome.

## FISHING

The Little Gunpowder Falls contains many species of fish, including smallmouth bass. Anglers ages 16 and older are required to possess a Maryland Non-Tidal Fishing License.

## NOTE

The Maryland Park Service does not rent horses and only provides the trails as a means of recreation.

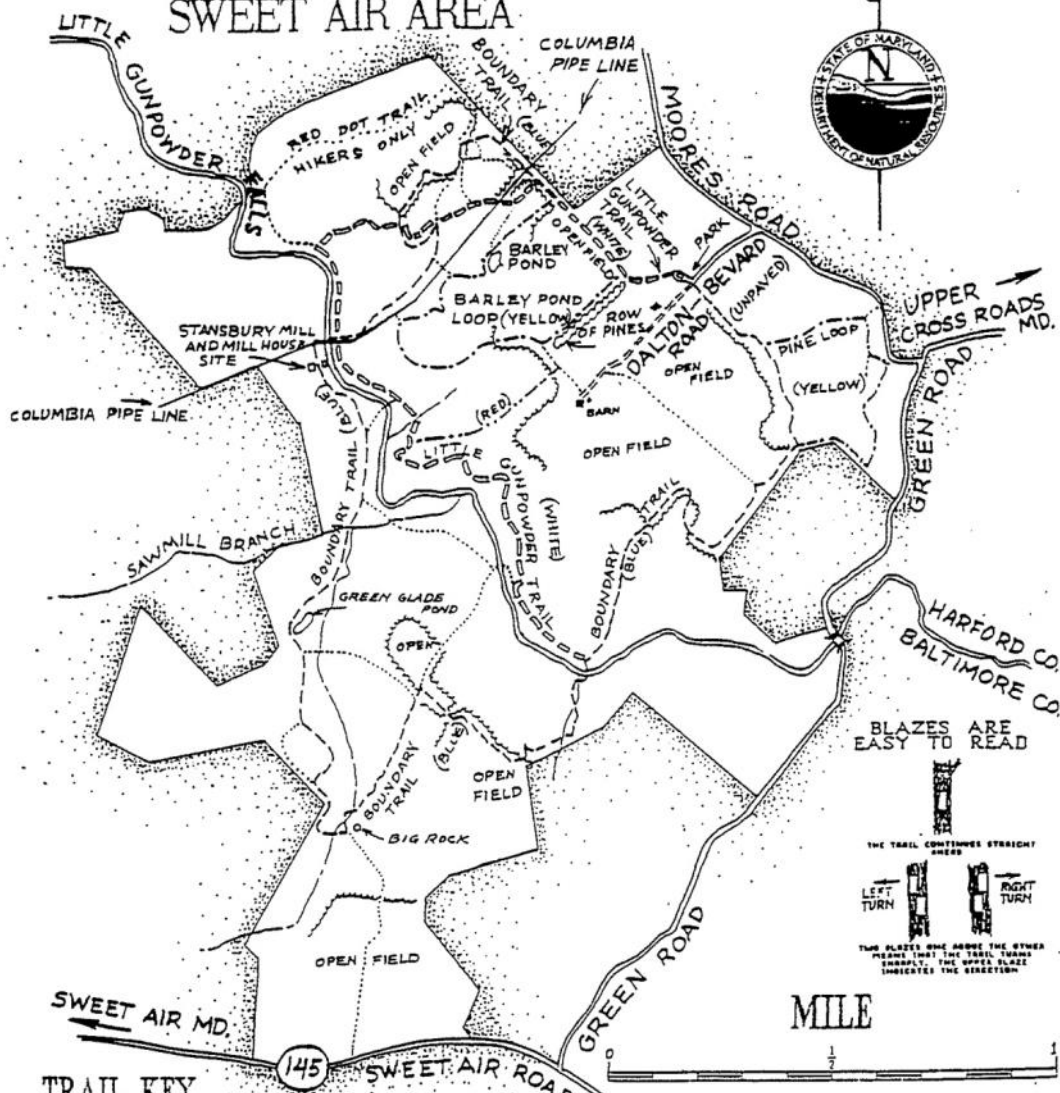


Photo by Stephen Badger

**DIRECTIONS TO THE SWEET AIR AREA** - From I-95, take exit 74 for Route 152 west (Mountain Road). Follow Route 152 for ten miles. Make a left onto Baldwin Mill Road (Route 165 South). Take the first right onto Greene Road, a right onto Moores Road, and then left onto Dalton Bevard Road (2840 Dalton Bevard Road, Baldwin, MD 21013).

# GUNPOWDER FALLS STATE PARK

## SWEET AIR AREA



### TRAIL KEY

TRAIL	BLAZE COLOR	ROUND TRIP FROM PARK LOT
LITTLE GUNPOWDER TRAIL	WHITE	3.9 MI.
BOUNDARY TRAIL	BLUE	4.9 MI.
PINE LOOP	YELLOW	1.5 MI.
BARLEY POND LOOP	YELLOW	1.3 MI.
CONNECTING TRAIL	RED	
UNMARKED TRAILS		

T. P. BROWER 1974  
7th Revision '95

# Gunpowder's Central Area

EXPLORE THE BIG AND LITTLE GUNPOWDER FALLS



Bordering both the Big and Little Gunpowder Falls to their confluence at Days Cove, the Central Area features many miles of trails and opportunities to fish. The Central Area includes the historic Jerusalem Mill and Village (see page 21), which also serves as the Gunpowder Falls State Park headquarters.

## HOURS

Sunrise to sunset.

**Please be respectful to others and take your trash with you.**

**Alcohol is prohibited.**

## TRAILS

Hikers, pets on leashes and horseback riders are welcome on all of the central area's trails. Mountain bikers are welcome on many trails, but **bicycles are prohibited in the Sweathouse Branch wildlands area** along the Big Gunpowder Falls between Harford Road and Belair Road (U.S. 1). The Sweathouse Branch wildlands features several loop trails through hardwood forest along the banks of the Big Gunpowder Falls.

## FISHING

The Big and Little Gunpowder Falls are both stocked with trout in put-and-take fishing areas. Anglers 16 years-of-age and older must possess a Maryland Non-Tidal Fishing License and a Trout Stamp.



Photo by Sue Smeltzer

## Ranger's Recommendation

Quarry Trail in Little Gunpowder and Stocksdale Trail in Big Gunpowder.

## RIVER RECREATION

This section of the Big Gunpowder Falls offers opportunities for both novice and advanced paddlers. Access to the Big Gunpowder Falls is available at Belair Road and Harford Road. Personal flotation devices are required for all persons canoeing, kayaking, and tubing on the river. Helmets are recommended for canoers and kayakers.



Photo by Andrea Bucher

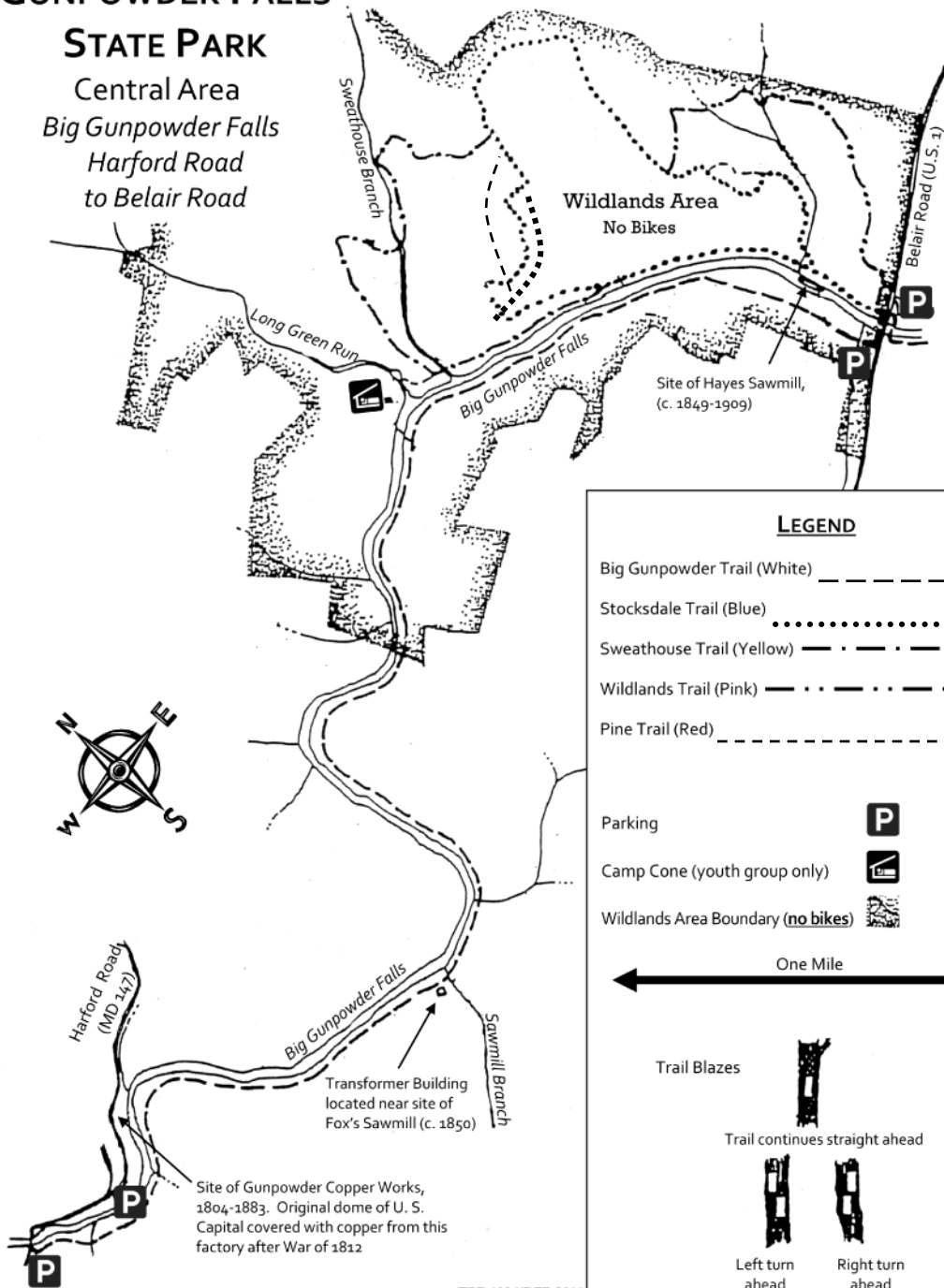
**DIRECTIONS TO THE CENTRAL AREA (BELAIR ROAD)** – From the Baltimore Beltway (I-695), take U. S. 1 (Belair Road) north seven miles until you cross over the Big Gunpowder Falls. The parking lot will be on your right immediately after the bridge across the falls.



# GUNPOWDER FALLS

## STATE PARK

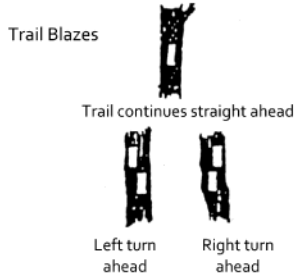
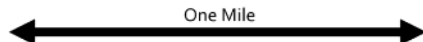
Central Area  
 Big Gunpowder Falls  
 Harford Road  
 to Belair Road



### LEGEND

- Big Gunpowder Trail (White)
- Stocksdale Trail (Blue)
- Sweathouse Trail (Yellow)
- Wildlands Trail (Pink)
- Pine Trail (Red)

- Parking
- Camp Cone (youth group only)
- Wildlands Area Boundary (no bikes)

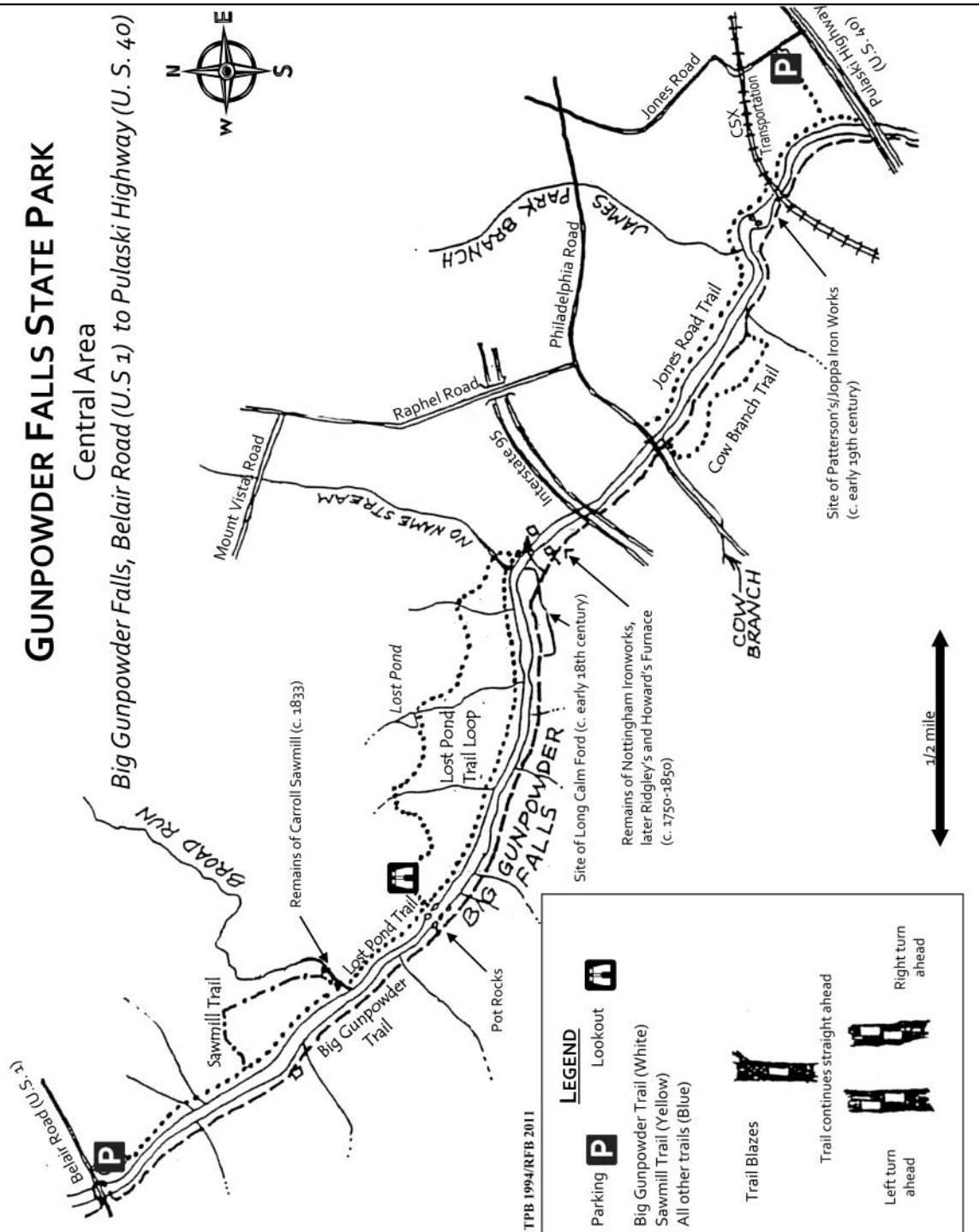


TPB 1994/RFB 2011

# GUNPOWDER FALLS STATE PARK

## Central Area

Big Gunpowder Falls, Belair Road (U.S. 1) to Pulaski Highway (U.S. 40)



TPB 1994/RTFB 2011

### LEGEND

**P** Parking

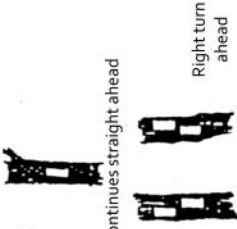
**A** Lookout

Big Gunpowder Trail (White)

Sawmill Trail (Yellow)

All other trails (Blue)

Trail Blazes

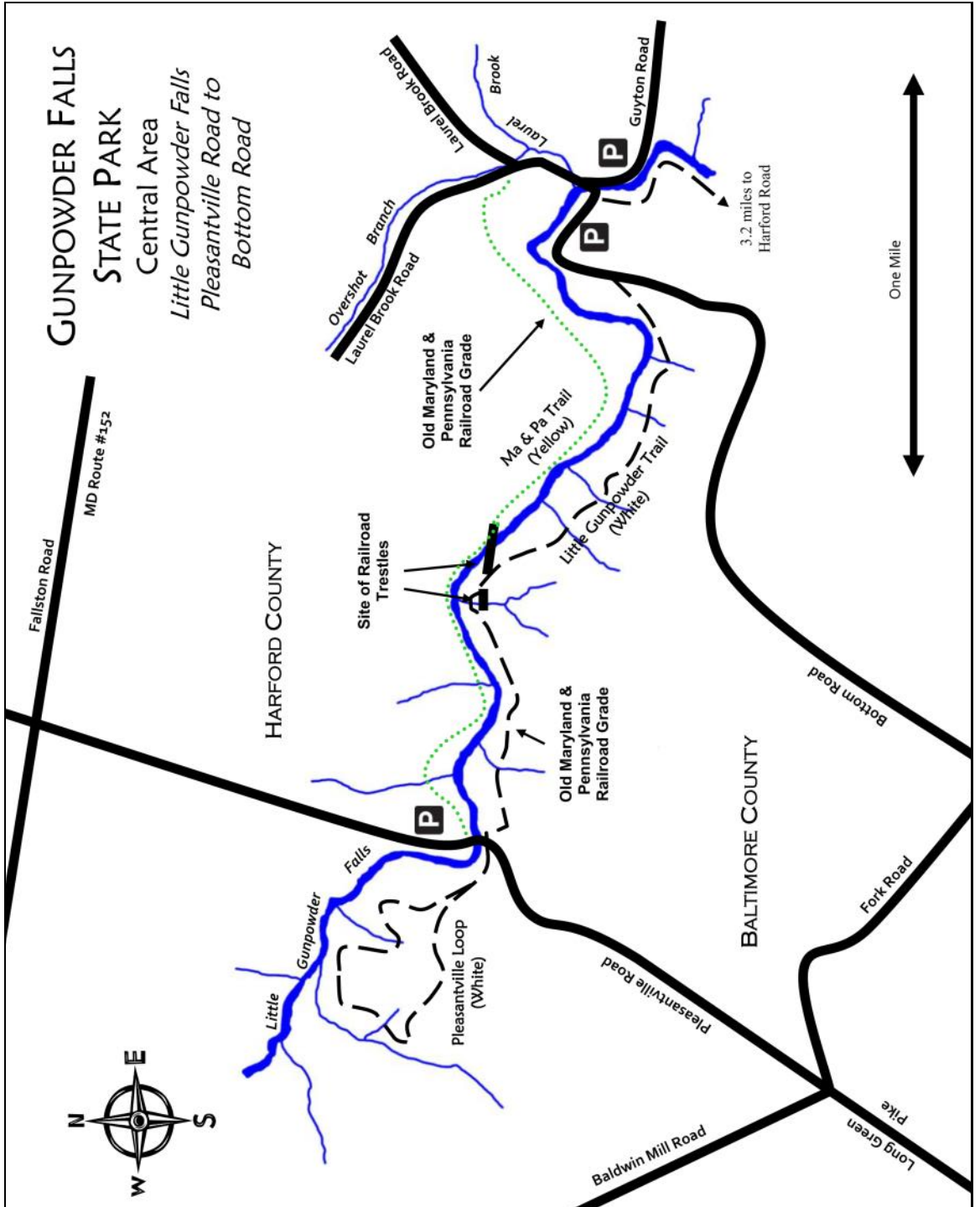


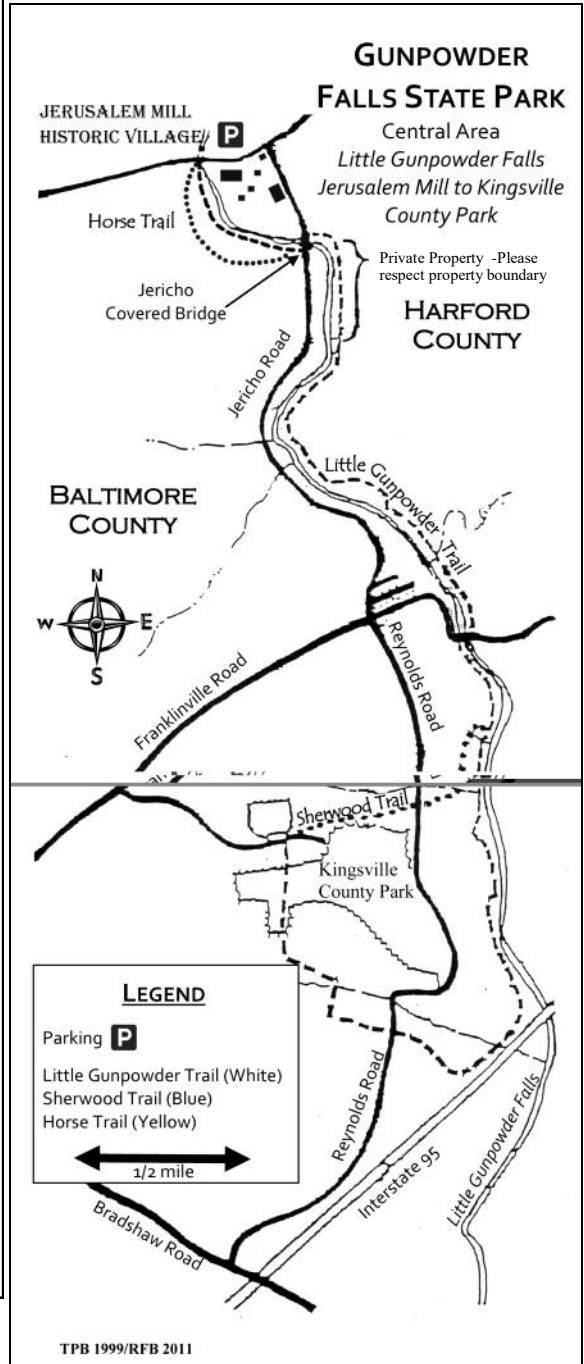
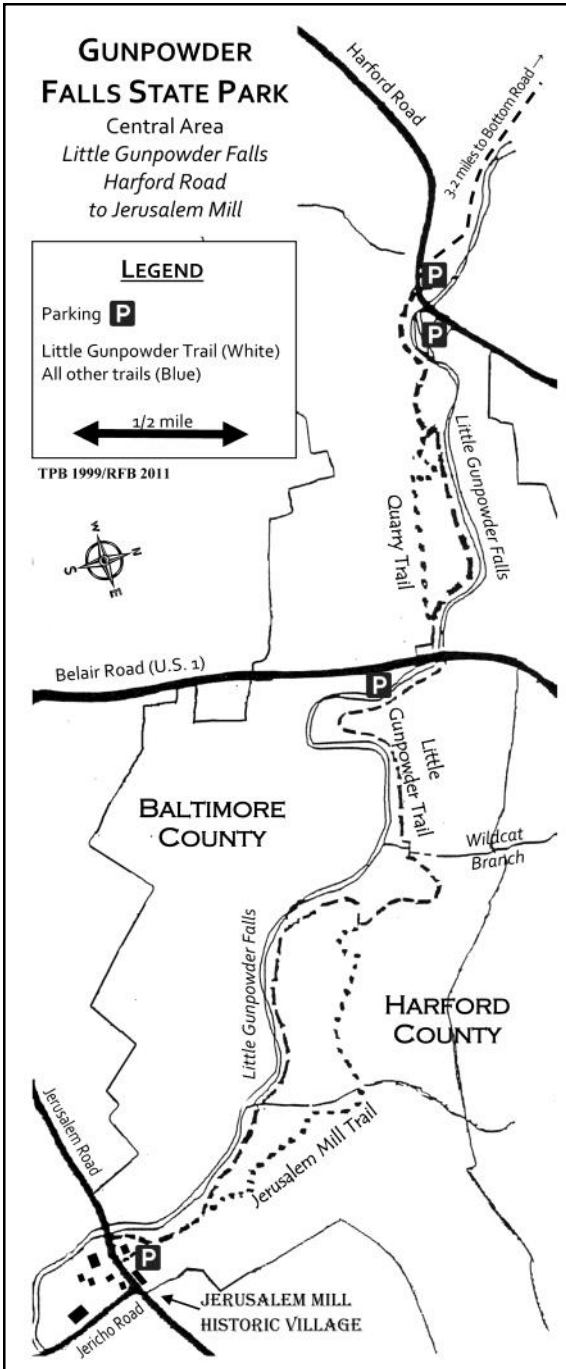
Trail continues straight ahead

Left turn ahead

Right turn ahead

**GUNPOWDER FALLS  
STATE PARK**  
Central Area  
*Little Gunpowder Falls  
Pleasantville Road to  
Bottom Road*





# Jerusalem Mill Historic Village

TAKE A JOURNEY INTO THE PAST AND LEARN ABOUT  
LIFE IN THE 18TH & 19TH CENTURIES



Once the center of a thriving 18th- and 19th-century Quaker settlement, the Jerusalem gristmill operated continuously for nearly two centuries. Located on the banks of the Little Gunpowder Falls in Harford County, both the mill and village are listed on the National Register of Historic Places. Jerusalem Mill was acquired by the state as part of Gunpowder Falls State Park in 1961 and now serves as the park headquarters and visitor center. The village's buildings and grounds host a variety of events year-round.



Photo by Jack Benesch

## HOURS

Grounds and Trails: Sunrise to sunset.

**Please be respectful to others and take your trash with you.**

**Alcohol is prohibited.**

## THINGS TO SEE AND DO

Visitor Center & Museum: View artifacts and exhibits about the mill and village; open Mondays, Saturdays, and Sundays from 1 p.m. — 4 p.m.

Blacksmith Shop: Demonstrations of traditional iron working techniques are offered; open most Saturdays and Sundays, 1 p.m. — 4 p.m.

Miller's House: Observe 18th and 19 century village life including cooking and gardening. Open Sundays, 1 p.m. — 4 p.m.

McCourtney's General Store Museum: View artifacts and displays from the 1830s to the 1940s and shop for eclectic treasures. Open most Saturdays and Sundays, 1 p.m. — 4 p.m.

*Hours are subject to change.*

## SPECIAL EVENTS

The Friends of Jerusalem Mill hold special events throughout the year, which include the popular summer concert series, among other events. Check their website for an up to date list of events at [www.jerusalemmill.org](http://www.jerusalemmill.org)



Photo by Jack Benesch

**DIRECTIONS TO JERUSALEM MILL - From I-95, take exit 74 for Route 152 west (Mountain Road). Follow Route 152 toward Fallston and turn left onto Jerusalem Road. Jerusalem Mill will be on your left after 1.1 miles. Parking is in the lot on the right, just before the mill (2813 Jerusalem Road, Kingsville, MD 21087).**

# Hammerman Area

A PLACE FOR YOUR FAMILY TO PICNIC AND SWIM



As Gunpowder's featured day-use park, Hammerman includes a swimming beach, food concessions, four picnic pavilions, picnic tables, playgrounds, fishing and short hiking trails.

## HOURS

April-October: 8 a.m. to sunset.

November-March: 10 a.m. to sunset.

Closed December 25.

**Please be respectful to others and take your trash with you.**

**Alcohol is prohibited (except in pavilions with a permit).**

## SERVICE CHARGES

- Service charges are subject to change. Call 410-592-2897 to confirm.
- **Weekends and Holidays, Memorial Day weekend through Labor Day:** There is a \$5 per person service charge (\$7 per-person for non-Maryland residents) for entrance into the Hammerman Area.
- **Weekdays, Memorial Day weekend through Labor Day:** There is a \$3 per person service charge (\$5 per-person for non-Maryland residents) for entrance into the Hammerman Area.
- **Off-season (after Labor Day to the Friday before Memorial Day weekend):** A \$3 per-vehicle (\$5 for non-Maryland residents) honor system is in effect.
- Children in car seats are free.
- Senior citizens aged 62 and older are eligible for a \$10 lifetime Golden Age Pass.
- Patrons who leave the park are required to pay again to re-enter.

## BEACH

The Hammerman Area offers 1,500 feet of beach and swimming area on the banks of the Gunpowder River. Lifeguards are typically on duty at the swimming area Memorial Day weekend through Labor Day. Please call 410-335-3461 for lifeguard hours. Swimming is permitted at your own risk when lifeguards are not on duty.

## NOTICE: PLAN YOUR VISIT!

The Hammerman Area is known to fill to capacity on summer weekends and especially on holidays. All visitors will be turned away if the park fills to capacity. Patrons are encouraged to arrive early.

The beach parking lot also fills to capacity. Satellite parking lots are usually available within a 5-10 minute walk from the beach. Loading and unloading at or near the beach parking lot is not permitted.

## PICNICKING

Picnic tables and grills are available on a first come, first served basis. Please keep all fire in the grills provided, and be sure to extinguish all fires before departing.

### Ranger's Recommendation

Dogwood Trail (0.75 miles)



Photo by Brooke Bartko



### PAVILIONS

Hammerman’s four pavilions can be rented between April 1 through October 30. These must be reserved in advance by calling 1-888-432-CAMP(2267), or by visiting [parkreservations.maryland.gov](http://parkreservations.maryland.gov).

There is a \$200 reservation fee (plus an optional \$35 alcohol permit fee) for each pavilion.

**All pavilion users are required to pay the park entrance service charge.** Ticket books can be purchased in advance by calling 410-335-3461.

Pavilions accommodate up to 100 guests. Generators, amplified music, DJs, moon bounces, and commercial tents are prohibited. Special events occurring at pavilions must be approved by the park in advance.

### FISHING

Fishing is not permitted from the Hammerman Beach. Fishing is permitted near the canoe ramp. Anglers 16 years-of-age and older must possess a Maryland Bay Sport Fishing License.

### BOAT LAUNCH

The Hammerman Area has a small boat launch. However, the water is **extremely shallow** and is only appropriate for unpowered boats such as canoes, kayaks and rowboats. Larger boats can launch at nearby Dundee Creek Marina.

### HIKING

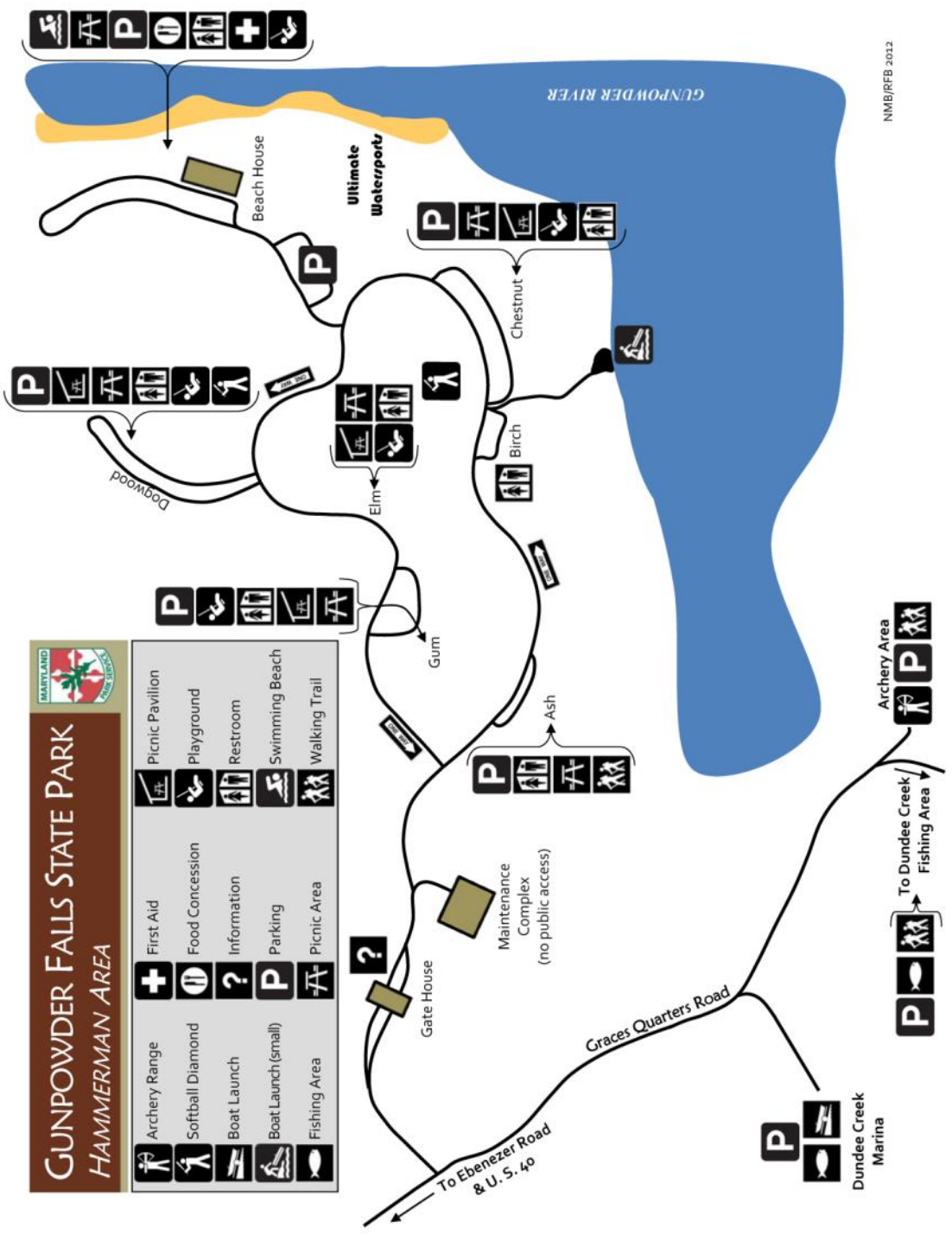
The Muskrat Trail is a short trail for hikers only that winds through the marsh. The trail features an observation deck. The Dogwood Loop begins to the left of the entrance to the Dogwood parking area and ends across the field.

### PETS

Pets on leashes are welcome, except on the sandy portion of Beaches 2—5 between Memorial Day weekend through Labor Day, beach house/ concession stand, restrooms and playgrounds. Service animals are exempt. Beach 1 is pet-friendly year-round.

**DIRECTIONS TO THE HAMMERMAN AREA - From I-95 take exit 67A for Route 43 east. Take 43 to Route 40 east. Turn right onto Ebenezer Road and follow it for 4.5 miles. The park entrance will be on your left (7200 Graces Quarters Road, Chase, MD 21027).**

# GUNPOWDER FALLS STATE PARK HAMMERMAN AREA

NMB/RFB 2012



# Dundee Creek Marina and Fishing Area

## EXPLORE THE GUNPOWDER BY BOAT



Located on Dundee Creek near the mouth of the Gunpowder River, the marina offers a number of amenities for recreational boaters and marina slip holders including gas sales, sewage pump out, boat accessories, bait, fishing tackle, ice and packaged snacks.



Photo by Gordon Cox

**Alcohol is prohibited.**

**Please be respectful to others and take your trash with you.**

### RAMP HOURS

- Memorial Day weekend - Labor Day: 5 a.m. - sunset.
- April 1 - Memorial Day, as well as the day after Labor Day - November 30: 6 a.m. - sunset.
- Overnight boaters must register in advance with the marina store or park office.
- **The marina closes at sunset. Late boaters are not permitted.**

*Please note, the marina is closed December 1 through March 31.*

### MARINA BOAT LAUNCH

The launch fee at the marina is \$10 for Maryland residents (\$12 for non-Maryland residents). Maryland Park Service Passport and Golden Age Pass holders launch for free.

**Slip Leasing:** Slips are available on a first come, first served basis. Please call 410-592-2897 for more information.

### MARINA STORE

The Dundee Creek Marina Store sells gasoline, fishing and boating accessories, as well as drinks and snacks. The store's hours are:

- May and September (weekends only): 6 a.m. - 2 p.m.
- Memorial Day weekend – Labor Day: 5 a.m. - 7 p.m., closed Wednesdays.

*Store hours are subject to change due to weather. Please call 410-335-9390 for confirmation.*

### FISHING AREA AND ARCHERY RANGE

The fishing area and archery range are located at the end of Graces Quarters Road. Anglers 16 years-of-age and older must possess a Maryland Bay Sport Fishing License. The fishing area is open year-round, but it is closed to vehicular traffic from December 1 through March 31. The archery range is

# Hart-Miller Island State Park

APPRECIATE NATURE ON AN ISLAND IN THE CHESAPEAKE BAY



Originally part of a peninsula that extended from Edgemere, Hart and Miller Islands were joined by construction of a dike in 1981. The impoundment was filled with dredge material from both the Baltimore Harbor and surrounding tributaries to create the present day island. In recent years, Hart-Miller Island has become a recreational haven for boaters in the northern Chesapeake Bay.

**Please be respectful to others and take your trash with you.**

**Alcohol is prohibited.**

**Leashed pets are allowed on Hart-Miller Island.**

## **HOURS**

The island is accessible from May 1 - September 30 from 9:00 a.m. to 3:00 p.m. on Monday, Thursday and Friday and from 11 a.m. - 6 p.m. on Saturday, Sunday and holidays. The South Cell contains over eight miles of trail. The North Cell is currently closed to the public.

## **CAMPING**

Primitive campsites are available on both Pleasure Island and Hart-Miller Island. Campsites are accessible by private boat only, and available from May 1 - Sept. 30. Sites are first come, first served. Service charge: \$6/site/night, which will be collected after you setup. Limit of 6 people per site.

## **HIKING**

The South Cell contains over eight miles of trail, with shaded benches stationed at scenic overlooks.

## **BIKING**

Bikes and helmets are also available for rental at the park office.



## **BIRDING**

Hart-Miller Island is a birding hotspot due to its location directly in the migratory fly-over routes for many species of birds. Since 1977, there have been over 300 species observed around the island, including Bald Eagles, Northern Harriers, and Ospreys.

Stop by the park office for a birding guide and pair of binoculars. Be sure to bring water and insect repellent when visiting the island for a day on the bay.

**Hart-Miller Island is accessible by private boat only.**

A six knot speed limit is enforced at all times on the west side (beach side) of the island. To ensure an enjoyable visit, keep informed of local weather conditions and watch the sky for any changes which may indicate a storm.

# Hart-Miller Island South Cell Trail Map

- LEGEND**
- Blue Cross Dike Loop 3.25 miles from State Park (round trip)
  - Red Holding Pond Loop 0.6 mile
  - White Berm Trail 1.25 miles
  - Shortcut Trails
  - State Property Boundary – Do Not Enter – Not Open to Public Use
  - 8' Bench With Shading Roof
  - DNR Ranger Station and Buildings
  - Monument
  - Portable Toilet Unit



# North Point State Park

DISCOVER HISTORY, EXPLORE WILDLANDS



North Point State Park includes more than six miles of shoreline along the Chesapeake Bay, Back River, and Shallow Creek. The park also features several wetlands including a large bayside marsh.

From 1906 to 1947 North Point was the site of the Bay Shore Amusement Park, which bustled with activity as people sought recreation and relaxation. The park included a dance hall, bowling alley, restaurant, rides and roller-coasters, as well as the 1,000 foot Crystal Pier. Bay Shore Park was demolished in 1948 and the Maryland Department of Natural Resources acquired the property in 1987 to protect the Black Marsh Wildlands area and provide recreational access to the Chesapeake Bay.

## HOURS

8:00 a.m. to sunset.

Closed on December 25.

**Please be respectful to others and take your trash with you.**

**Alcohol is prohibited.**

## SERVICE CHARGES

- Service charges are subject to change. Call 410-477-0757 to confirm.
- **Weekends and Holidays, Memorial Day weekend through Labor Day:** There is a \$4 per-vehicle service charge (\$6 per-vehicle for non-Maryland residents) for entrance into North Point.
- **Weekdays, Memorial Day weekend through Labor Day and Off-season (after Labor Day to the Friday before Memorial Day weekend):** There is a \$3 per-vehicle service charge (\$5 per-vehicle for non-Maryland residents) for entrance.
- Patrons who leave the park are required to pay again to re-enter.

## TAKOS VISITOR CENTER

The Takos Visitor Center is open from Memorial Day weekend through Labor Day, from 9 a.m. - 5 p.m on Saturdays and Sundays. Hours are subject to change. The visitors center has public restrooms, park information, and interpretive historical panels.



## PICNICKING

Picnic tables and grills are available on a first come, first served basis.

Due to necessary repairs, the Trolley Station pavilion is temporarily closed. We are working to make the repairs as soon as possible.

## PETS

Pets on leashes are welcome, except on the sandy portion of the water access area (from Memorial day weekend through Labor Day).

## NOTICE: PLAN YOUR VISIT!

North Point frequently fills to capacity on summer weekends and especially on holidays. All visitors will be turned away if the park fills to capacity. Patrons are encouraged to arrive early.



Photo by Wendy Crowe

### **FISHING**

North Point's two piers offer fishing opportunities for anglers. Anglers ages 16 and older are required to possess a Maryland Tidal Fishing License.

### **OLD BAY SHORE PARK**

Visitors can explore the remains of the turn-of-the-20th-century amusement park. Sites of interest include the 1,000 foot Crystal Pier, Trolley Station, and Fountain.

### **BLACKMARSH WILDLANDS**

The type 2 Black Marsh Wildlands area is comprised of 667 acres. The Black Marsh trail winds through the protected area and provides an opportunity to view the unique marsh wildlife and habitat. Muskrats, beavers, foxes, otters, osprey, great blue herons, and bald eagles frequent this area. However, please do not disturb any wildlife you may encounter.

**Bicycles are prohibited in the Wildlands.**

### **BIRDING**

Waterfowl, songbirds and many raptors visit North Point State Park. Commonly sighted species include Wood Ducks, Blue Jays, Red-tailed Hawks, and Belted Kingfishers.

### **HIKING**

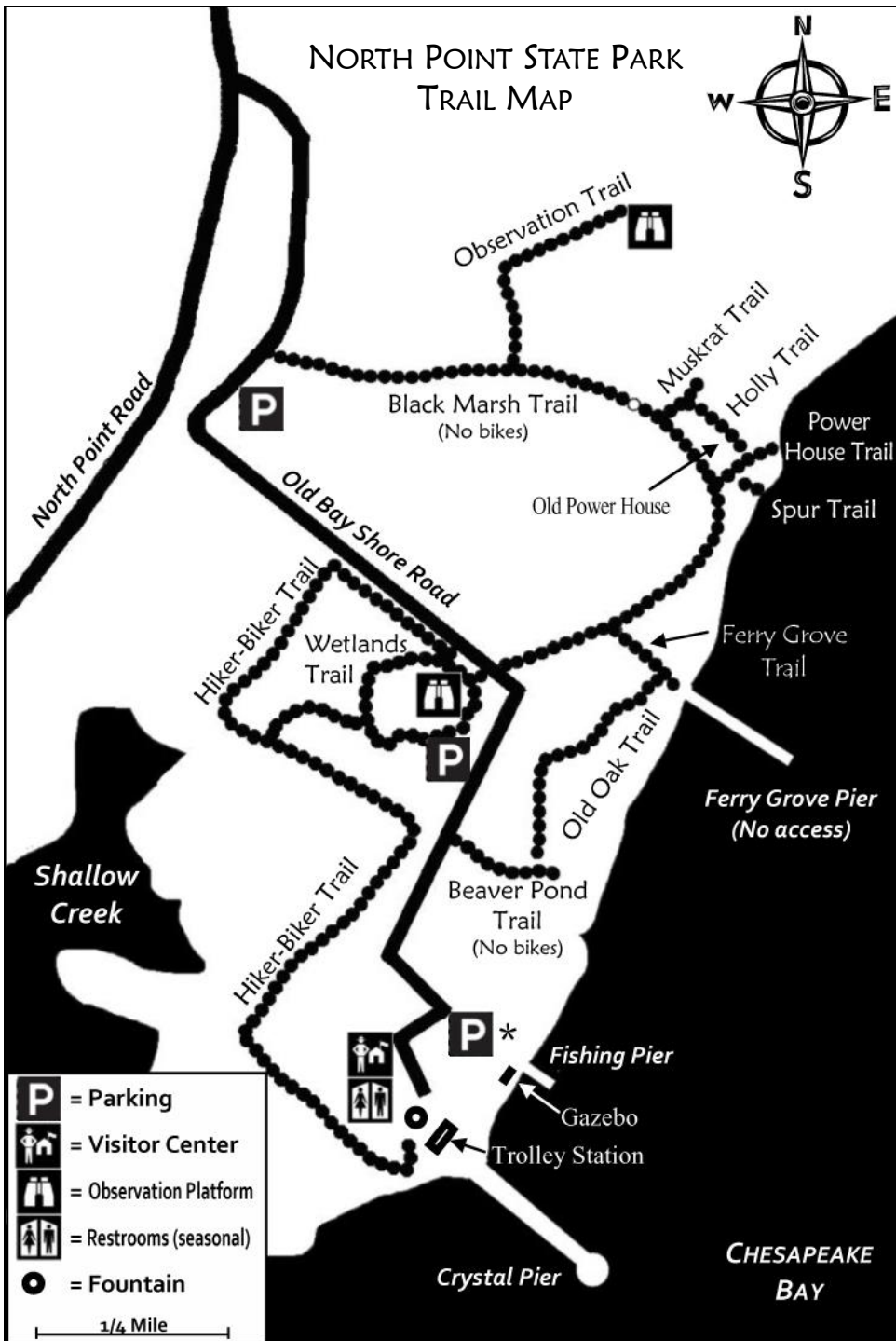
5 miles of trail allow visitors to explore the area and observe local wildlife. Please refrain from riding bicycles or hiking on trails within 24 hours after a heavy rainfall event.

**Ranger's Recommendation**  
Black Marsh Trail (1.6 miles)

### **BIKING**

Bikes are permitted on Bay Shore Road, Hiker-Biker Trail, and Wetlands Trail. Due to much of the park being designated as a protected Wildlands, bikes are restricted on other trails. Helmets are recommended.

**DIRECTIONS TO NORTH POINT STATE PARK - From I-695 south take exit 42. Make a left onto North Point Road. Follow North Point Road through Edgemere. The entrance to the park will be on your left after 2 miles. From I-695 north take exit 43. Make a left onto Bethlehem Blvd. Go straight on North Point Road through Edgemere. The entrance to the park will be on your left after 2 mile (8400 North Point Road, Edgemere, MD 21219).**



# North Point State Battlefield

## DEFENSE OF BALTIMORE



North Point State Battlefield preserves nine acres of open land which represent the last undeveloped parcel from the site of the Battle of North Point, a turning point in the Defense of Baltimore during the War of 1812. On September 12, 1814, 3,000 citizen soldiers of the Maryland militia deployed across this field and fought invading British regiment from behind a fence line along its eastern edge. American Brigadier General Stricker, the hero of North Point, commanded his forces from within the borders of the State Battlefield.

### **HOURS**

8 a.m. to sunset. Closed on December 25.

**Please be respectful to others and take your trash with you.**

**Alcohol is prohibited.**

### **PETS**

Leashed pets are welcome.

### **COMMEMORATIVE LANDSCAPE**

Wildflower meadows symbolize pastures over which the British had to march, and open stands of trees symbolize the woodlands in which the Americans took cover.

### **BATTLE OF NORTH POINT**

Occurring immediately after a demoralizing American defeat at the Battle of Bladensburg and the subsequent burning by the British of the White House and other public buildings of Washington D.C., the tough resistance offered by Stricker's citizen soldiers at the Battle of North Point restored American morale. Though the British dislodged the Maryland troops from their position and thus won the Battle, the determined stand made by Stricker's Maryland

militiamen against a superior force of 4,000 professional British soldiers, marines and seamen reinvigorated Americans' faith in the fighting spirit of their part-time army of citizen soldiers. Along with the successful resistance of Fort McHenry against a British bombardment from sea over the next two days, the sharp fight at North Point demonstrated to the British that even after the loss of their national capital, America would not be easily subdued by force of arms.

From that day to this, the anniversary of the battle has been celebrated as Defender's Day, a Maryland State Holiday honoring those who risked their lives in America's defense during our 'Second War of Independence.'



*Photo by Sara Rinta*

**DIRECTIONS TO NORTH POINT STATE PARK BATTLEFIELD-** From I-695 take exit 41. Take Cove Road south towards Dundalk. After crossing MD-151 at the street light, Cove Road turns into North Point Road and bears right. The entrance to the battlefield will be on the right, just past the intersection of North Point Road and Trappe Road.

# GUNPOWDER FALLS STATE PARK

**LEGEND**

- Gunpowder Falls State Park
- Torrey C. Brown Rail Trail
- Major Road/Highway

