

Contents lists available at [ScienceDirect](http://www.sciencedirect.com)

Biochimica et Biophysica Acta

journal homepage: www.elsevier.com/locate/bbamcr

Review

Autophagy: A lysosomal degradation pathway with a central role in health and disease

Eeva-Liisa Eskelinen^{a,*}, Paul Saftig^b^a Department of Biological and Environmental Sciences, Division of Biochemistry, University of Helsinki, PO Box 56, FIN-00014 Helsinki, Finland^b Biochemical Institute, Christian-Albrechts University Kiel, Germany

ARTICLE INFO

Article history:

Received 18 April 2008

Received in revised form 9 July 2008

Accepted 10 July 2008

Available online 28 July 2008

Keywords:

Autophagy

Lysosome

Phagocytosis

Cancer

Cell death

Neurodegeneration

Aging

ABSTRACT

Autophagy delivers cytoplasmic material and organelles to lysosomes for degradation. The formation of autophagosomes is controlled by a specific set of autophagy genes called *atg* genes. The magnitude of autophagosome formation is tightly regulated by intracellular and extracellular amino acid concentrations and ATP levels via signaling pathways that include the nutrient sensing kinase TOR. Autophagy functions as a stress response that is upregulated by starvation, oxidative stress, or other harmful conditions. Remarkably, autophagy has been shown to possess important housekeeping and quality control functions that contribute to health and longevity. Autophagy plays a role in innate and adaptive immunity, programmed cell death, as well as prevention of cancer, neurodegeneration and aging. In addition, impaired autophagic degradation contributes to the pathogenesis of several human diseases including lysosomal storage disorders and muscle diseases.

© 2008 Elsevier B.V. All rights reserved.

1. Introduction

Autophagy is an evolutionarily conserved and strictly regulated lysosomal pathway that degrades cytoplasmic material and organelles [1,2]. Autophagy is activated during stress conditions such as amino acid starvation, unfolded protein response or viral infection. Depending on the delivery route of the cytoplasmic material to the lysosomal lumen, three different autophagic routes are known: 1) macroautophagy, or simply autophagy, 2) microautophagy, and 3) chaperone-mediated autophagy. In macroautophagy, a portion of cytoplasm to be degraded is first wrapped inside a specialized organelle, the autophagosome, which then fuses with lysosomal vesicles and delivers the engulfed cytoplasm for degradation (Fig. 1). In microautophagy, the lysosomal membrane itself sequesters a portion of cytoplasm by a process that resembles pinching off of phagosomes or pinosomes from the plasma membrane [3]. In chaperone-mediated autophagy, proteins possessing a specific

sequence signal are transported from the cytoplasm, through the lysosomal membrane, to the lysosomal lumen [4].

After induction by a stress signal such as starvation, the first step in (macro)autophagy is the formation of an *autophagosome* (Fig. 1). A flat membrane cistern elongates and wraps itself around a portion of cytoplasm or a specific cargo, forming a double-membrane bound autophagosome. This membrane cistern is called the *phagophore*, or *isolation membrane*. Autophagosomes next receive lysosomal constituents, such as lysosomal membrane proteins and proton pumps, by fusion with late endosomes or multivesicular bodies (MVBs). Finally, autophagosomes fuse with lysosomes [5–11] (Fig. 1). After fusion with endosomes or lysosomes, autophagosomes are called *amphisomes* or *autolysosomes*, respectively. Both the cytoplasm and the inner limiting membrane around it are degraded by lysosomal hydrolases, and the degradation products are transported back to cytoplasm where they can be reused for biosynthesis or energy production. After all material has been degraded in autolysosomes, they are assumed to become lysosomes that are able to undergo another fusion with endosomes or autophagosomes. Another possibility is that, if the degradation of the cargo is not complete, the autolysosome becomes a residual body containing indigestible material and lipofuscin pigment. Morphology of a typical autophagosome and a lysosome is depicted in Fig. 2.

The purpose of this review is to give a general overview of the cellular roles of autophagy and highlight the relevance of this pathway

Abbreviations: A β , amyloid β ; ER, endoplasmic reticulum; HOPS, homotypic vacuole fusion and protein sorting; LAMP, lysosome associated membrane protein; MHC, major histocompatibility complex; MVB, multivesicular body; NSF, *N*-ethylmaleimide-sensitive fusion protein; PAS, preautophagosomal structure; PI, phosphatidylinositol; SNAP, soluble NSF attachment protein; TLR, Toll like receptor; TOR, target of rapamycin; TRAPP, transport protein particle; UVRAG, UV irradiation resistance-associated gene

* Corresponding author. Tel.: +358 9191 59566; fax: +358 9191 59068.

E-mail address: eeva-liisa.eskelinen@helsinki.fi (E.-L. Eskelinen).

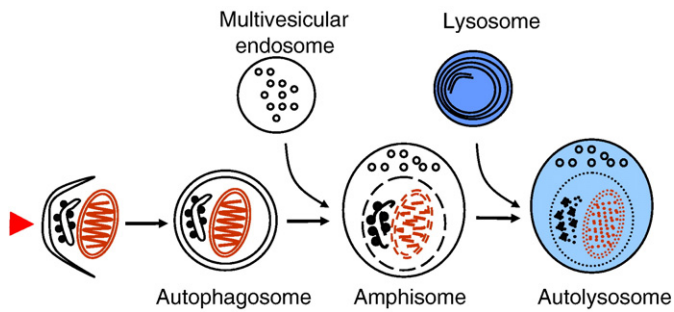


Fig. 1. Schematic presentation of autophagosome formation and maturation by fusion with endosomes and lysosomes. The arrowhead on the left illustrates the induction signal that initiates the process.

in various diseases. We include more detailed review articles in the reference list for those readers who wish to read more about a specific aspect of autophagy.

2. Autophagosome formation and maturation into autolysosomes

The origin of the membrane cisterns that form new autophagosomes remains unresolved [12]. Studies in yeast have revealed that autophagosomes originate from a unique compartment called the preautophagosomal structure or phagophore assembly site (PAS) [13–15]. It is not clear at present whether the PAS is a pre-existing compartment or a short-lived intermediate during autophagosome formation. The PAS can be detected by fluorescence microscopy as a spot next to the vacuole where the autophagy proteins are located, but so far the ultrastructure of this compartment has not been characterized. Because the autophagic pathway is well conserved from yeast to mammals, it is possible that a similar or equivalent unique compartment or intermediate also exists in mammalian cells. The phagophore/isolation membrane is the earliest morphologically detectable autophagy compartment in mammalian cells [16]. The phagophore is likely to be a compartment downstream of the putative PAS.

Several studies suggest that in yeast, membrane transport out of the endoplasmic reticulum (ER) contributes to autophagosome formation. COPII-coated vesicles transport material from the ER to the Golgi complex. Yeast mutants defective in a subset of COPII components are unable to form autophagosomes [17,18]. However, it is possible that the role of the essential COPII proteins is indirect, since not all COPII components are essential for autophagosome formation. Transport protein particle (TRAPP) is a complex of ten subunits that is essential for tethering of ER-derived transport vesicles to Golgi membranes. Trs85, a component of the TRAPP complexes, was reported to be required for macroautophagy and autophagy of peroxisomes [19], and for the selective cytoplasm to vacuole targeting (Cvt) in yeast [19,20]. These results, together with other studies on yeast [21], also suggest a role for the secretory pathway in autophagosome formation. Unexpectedly, conventional membrane fusion machinery, including *N*-ethylmaleimide-sensitive fusion protein (NSF), soluble NSF attachment protein SNAP, and SNAP receptors, are not needed for autophagosome formation in yeast [18,22]. This suggests that unconventional membrane traffic pathways are used during autophagosome formation.

After their formation, autophagosomes undergo a stepwise maturation process including fusion events with multivesicular endosomes and lysosomes [1,23]. Fusion with endosomal compartments depends on Vps4/SKD1 and Rab11 [24,25]. A recent study shows that autophagosome–endosome fusion is enhanced by components of the HOPS complex (homotypic fusion and protein sorting) [26]. Further, several studies show that autophagosome maturation is impaired if Hrs or subunits of the ESCRT III complex, proteins needed for the biogenesis of multivesicular endosomes, are absent or non-

functional [27–30]. Fusion with lysosomes is necessary for the complete degradation of segregated cytoplasm. Intact microtubules, the microtubule motor dynein, the small GTP-binding protein Rab7, components of the HOPS complex, and the lysosomal membrane protein LAMP-2 facilitate the fusion of autophagosomes with lysosomes [26,31–36]. In addition, SNARE proteins were shown to be necessary for the fusion of autophagosomes with the vacuole in yeast [18,37].

3. Atg-proteins

Yeast genetics has immensely enlarged the knowledge of the molecular mechanisms of autophagy [38]. About 30 autophagy-related yeast genes are known [2,22,39,40]. All autophagy-related novel genes are described by a common name, *ATG* [41]. Several mammalian homologues of yeast *ATG* genes have been identified, and the mechanisms of yeast autophagy are largely conserved in mammals.

Atg1 is a serine–threonine kinase that functions in the signaling pathway activating autophagy [42–44]. Atg1 interacts with Atg13 in a manner that is regulated by phosphorylation. During autophagy induction, the phosphorylation of Atg13 is decreased, which increases the assembly of Atg1–Atg13 complexes [42]. The mammalian homolog of Atg1 is called ULK1 [43].

Atg6 functions either on the signaling pathway, or early during the formation of autophagosomes. The mammalian homolog of Atg6 is called Beclin 1. This protein has a central role in the regulation of autophagy. Beclin 1 forms a complex with the class III phosphatidylinositol 3-kinase (PI3-kinase) Vps34 [45,46]. Vps34 is associated with the serine/threonine kinase Vps15 [47]. In addition, UVRAG (UV irradiation resistance-associated gene) associates with the Beclin 1–Vps34 complex and enhances autophagy [48]. Further, a protein called Ambra 1 binds to Beclin 1 and enhances Vps34 kinase activity and autophagosome formation [49]. Further, Bif-1 (also known as Endophilin B1) interacts with Beclin 1 through UVRAG and functions as a positive mediator of Vps34 activity [50]. Bif-1 localizes to autophagosomes. Beclin 1 also binds the proto-oncogenic proteins Bcl-2 and Bcl-XL. This binding decreases the PI3-kinase activity associated with Beclin 1 and inhibits autophagosome formation [51,52]. The components of the Beclin 1 complex are illustrated in Fig. 3.

Two novel protein conjugation systems are necessary for autophagosome formation, the Atg12–Atg5 and the Atg8–phosphatidylethanolamine systems [53]. The mechanisms of both conjugation systems closely resemble ubiquitin ligation to proteins, with

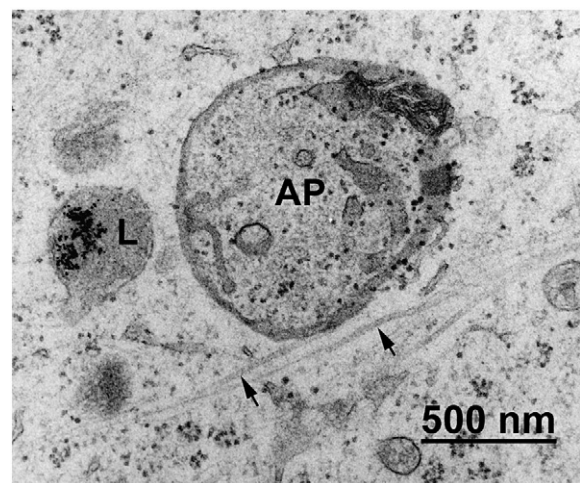


Fig. 2. Transmission electron micrograph showing an autophagosome (AP) and a lysosome (L) in a mouse fibroblast. The cells were fed with protein-coated gold particles for 2 h to fill the endosomal and lysosomal compartments (black dots inside the lysosome). The autophagosome is located next to microtubules (arrows).

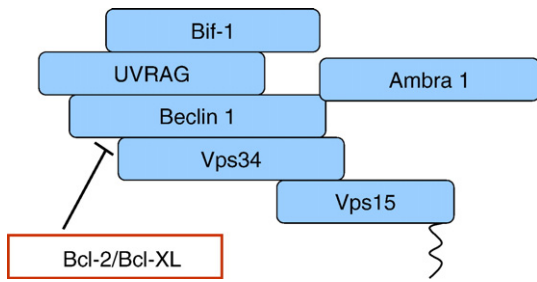


Fig. 3. The Beclin 1–Vps34 complex. The Vps15 subunit of Vps34 has a lipid tail that may assist to anchor the complex to a membrane. The proteins on blue background enhance Vps34 lipid kinase activity and autophagy. Beclin 1, UVRAG, Bif-1 and Ambra 1 are tumor suppressors. The proto-oncogenes Bcl-2 and Bcl-XL inhibit the binding of Vps34 to Beclin 1 and inhibit autophagy.

corresponding assisting enzymes to the E1 and E2 in ubiquitin ligation (Fig. 4). Atg12–Atg5 conjugate assists the formation, but is not present in sealed, autophagosomes [16]. Atg8 (called LC3 in mammals) also assists autophagosome formation, possibly by enhancing membrane fusion [54]. Atg8/LC3 is also present in sealed autophagosomes [55]. Soluble LC3 is called LC3-I, and the lipidated, autophagosome-specific form is called LC3-II.

4. Regulation of autophagy

Availability of nutrients, amino acids in particular, is an important physiological regulator of macroautophagy [56–58]. Autophagy is induced by amino acid starvation, and amino acids generated by degradation of autophagocytosed proteins act as a feedback inhibitor of autophagosome formation. Two amino acid sensors have been proposed in autophagy signaling: the protein kinase Gcn2, which is activated by uncharged transfer RNA molecules [59], and a putative amino acid receptor located on the plasma membrane [60]. Gcn2 senses intracellular amino acid levels, while the putative plasma membrane amino acid receptor senses extracellular amino acids. The signals from Gcn2 to autophagy are mediated by a pathway including the eukaryotic initiation factor eIF2 α , which supports autophagy when phosphorylated at Ser51 [59]. The putative amino acid receptor at the plasma membrane was proposed to mediate the signals from an extracellular non-transportable leucine analogue to the autophagic pathway [60], possibly via the target of rapamycin (TOR) kinase.

A recent study shows that amino acids regulate the binding of Bcl-2 to Beclin 1 [61]. As described above, the binding of Bcl-2 to Beclin 1 inhibits autophagy by inhibiting the Beclin 1-associated PI3 kinase activity [52]. Now, starvation was shown to induce the phosphorylation of Bcl-2, which inhibits the binding of Bcl-2 to Beclin 1 and leads to autophagy activation [61]. Further, the study shows that c-Jun N-terminal kinase 1 (JNK1) mediates this Bcl-2 phosphorylation [61].

Trimeric G proteins [62] and some proteins associated with them [63] also regulate autophagosome formation. This signaling is dependent on the activity of MAP kinases ERK1/2, which are turned off in the presence of amino acids [64]. Thus, amino acid signaling and control of autophagy by trimeric G proteins also seem to have a link [62].

TOR protein kinases play a conserved role in nutrient sensing, regulation of growth and proliferation, and control of a wide variety of metabolic processes. TOR plays a crucial role in autophagy regulation [65], which is in line with its role as a nutrient sensor. Active TOR kinase inhibits autophagy, and inhibition of the kinase activity by rapamycin activates autophagy [42,66]. TOR can also act as a sensor for intracellular ATP. AMP-activated protein kinase mediates the ATP sensing of TOR [67]. Thus ATP levels can control autophagy directly, and/or via TOR signaling [68]. Free cytosolic calcium was also reported to control macroautophagy: a rise in cytosolic calcium induces

autophagy [69]. Several calcium mobilizing agents including vitamin D3 and ATP were shown to inhibit TOR, suggesting free calcium functions upstream of TOR in autophagy signaling. This signaling is mediated by calcium/calmodulin-dependent kinase kinase- β and AMP-activated protein kinase [69].

Phosphatidylinositol 3-kinases (PI3-kinases) also regulate autophagy. As discussed above, the activity of class III PI3-kinase Vps34 is absolutely required for autophagosome formation [70,71]. Class I PI3-kinases have an opposite effect on autophagy: the activation of these kinases is inhibitory [71]. In line with this, PTEN, a phosphatase that decreases the concentration of class I PI3 kinase product, enhances autophagy [72]. Ras proteins function in signaling involved in cell proliferation and their mutations can cause malignant transformation. Ras was shown to participate in the negative control of starvation-induced autophagy upstream of class I PI3 kinase [73–75].

The transcription factor FoxO3 regulates muscle atrophy. This transcription factor was shown to be necessary and sufficient for autophagy induction in skeletal muscle [76,77]. FoxO3 was also shown to function downstream of Akt/PKB, by increasing the expression of many autophagy-related genes. The effect of FoxO3 on autophagy is not prevented by rapamycin, indicating it is independent of TOR signaling.

Fig. 5 summarizes most of the autophagy regulatory factors described above. For more detailed discussion on the regulation of autophagy, the reader is referred to specialized review [56–58,62,65,78,79].

5. Physiological functions of autophagy

5.1. Stress response and housekeeping function

The role of autophagy as a survival mechanism during short-term amino acid starvation is well documented. Macroautophagy is induced by starvation of serum and amino acids; autophagosomes can be detected already after 15–30 min of starvation [55]. During long-term starvation, chaperone-mediated autophagy increases and

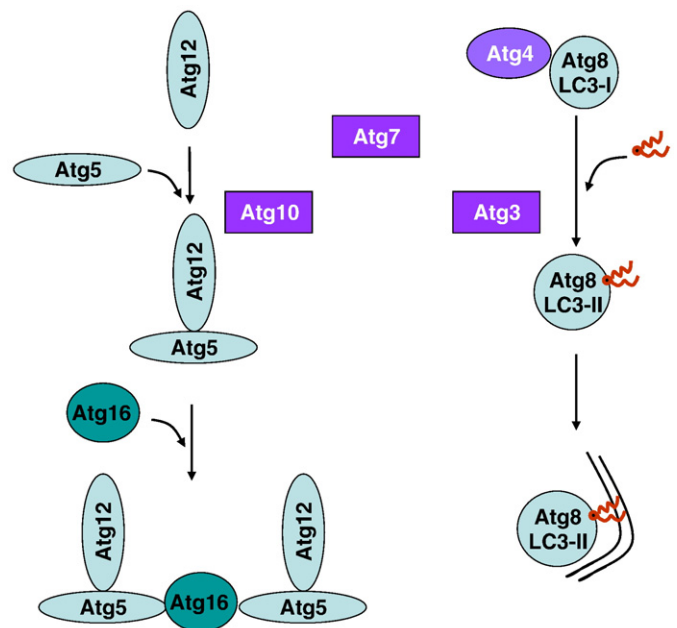


Fig. 4. Two protein conjugation systems necessary for autophagosome formation. Atg12 is ligated to Atg5 in a process assisted by the enzymes Atg7 and Atg 10. Atg12–Atg5 conjugates form larger oligomers with Atg16. Atg8/LC3-I is ligated to the lipid phosphatidylethanolamine (red wavy lines) in reactions assisted by Atg4, Atg7, and Atg3. The role of Atg4 is to cleave the carboxyl terminus of LC3-I to expose a glycine residue. Atg7 and Atg3 assist in the conjugation with the lipid. The lipid is thought to anchor Atg8/LC3-II to membranes.

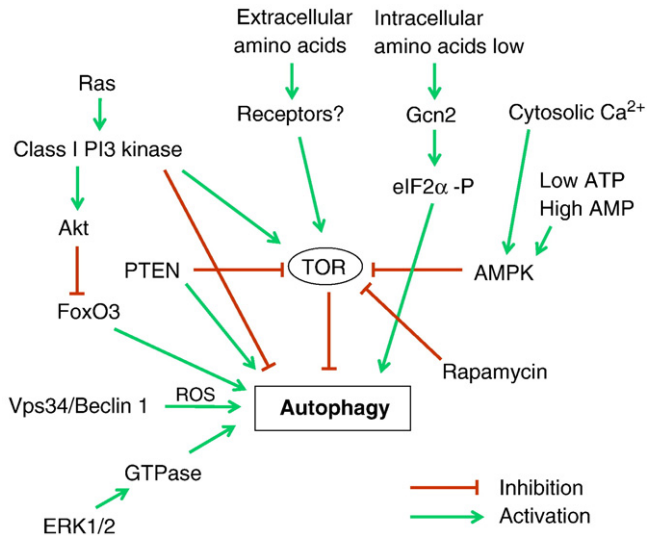


Fig. 5. A simplified and hypothetical model on signaling pathways that regulate macroautophagy. GTPase, trimeric GTP-binding protein, AMPK, AMP-activated protein kinase; eIF2 α , eukaryotic initiation factor 2 α ; ROS, reactive oxygen species.

macroautophagy decreases [80,81]. Yeast strains defective in autophagy do not survive nitrogen starvation [38]. Knockout mice deficient in one of the central autophagy proteins, Atg5, show that autophagy is indispensable for the energy metabolism immediately after birth [82]. Atg5 knockout mice die of starvation one day after birth.

In muscle and heart cells, autophagy seems to have a special housekeeping role in the turnover of cytoplasmic constituents including mitochondria. This is revealed by myopathy and cardiomyopathy in patients and mice possessing a defective autophagic degradation due to deficiency of the lysosomal membrane protein LAMP-2 [83–85]. LAMP-2 deficiency is described in detail later in this review. The importance of autophagy for the heart muscle is supported by a study showing that heart-specific loss of the autophagy protein Atg5 causes cardiomyopathy in mice [86]. Evidence has been published suggesting that damaged mitochondria might be autophagocytosed selectively in a process termed mitophagy [87]. Mitochondria are the major source of reactive oxygen species in cells. Interestingly, reactive oxygen species are necessary for the signal transduction pathway initiating starvation-induced autophagy [88].

It was proposed long ago that autophagy has a role in growth regulation, as suggested by decreased autophagy during growth of the kidney after unilateral nephrectomy [89]. Inducible knockdown of the autophagy protein Atg5 in cell culture shows that autophagy negatively controls cell size [90]. Similar result was observed in *Drosophila* fat body over-expressing the autophagy protein Atg1 [91].

Autophagy contributes to intracellular quality control and housekeeping, especially in turnover of aggregate-prone proteins. Prevention of autophagy by conditional knockout of *atg7* leads to accumulation of ubiquitinated protein aggregates in mouse tissues [92]. Tissue-specific knockout of autophagy proteins in the central nervous system causes accumulation of ubiquitin-positive protein aggregates and neurodegeneration in mice [93,94]. Further, enhanced autophagy reduces the toxicity of the Huntingtin protein aggregates that accumulate in Huntington disease [95]. Autophagy may prevent aggregate formation by degrading the proteins as monomers, oligomers, or after aggregate formation [96]. It is not clear at present whether aggregated proteins are segregated preferentially, or whether they are removed via unspecific autophagic uptake of cytoplasm. Two proteins have been proposed to function during the uptake of protein aggregates: Alf γ and p62 [97,98]. p62 binds to both ubiquitin-conjugated aggregate-prone proteins and the autophagosome protein LC3 [99], which suggests that it could selectively recruit

autophagy machinery to the aggregates and enhance their autophagic clearance.

In addition to removal of cytoplasmic aggregate-prone proteins, autophagy also contributes to the quality control in the ER. Unfolded protein response induces autophagy, and this induction is beneficial for cell survival [100–102].

Autophagic degradation is also needed for early embryonic development. A recent study shows that autophagy-defective mouse eggs fertilized with autophagy-defective sperm, failed to develop beyond the four and eight cell stages [103]. The authors suggest that autophagy may be needed in the preimplantation embryos for protein recycling, production of amino acids for protein synthesis or substrates for energy production, or for removal of obsolete maternal factors.

5.2. Innate and adaptive immunity

Autophagy contributes to both innate and adaptive immunity [104,105]. In some cases autophagy can protect cells against intracellular pathogens. Induction of autophagy during *Herpes simplex* virus infection, and localization of viral particles inside autophagic vacuoles, were proposed to indicate that autophagy acts as a host-defense mechanism in infected cells [59]. The *Herpes* virus virulence protein, ICP34.5, inhibits autophagy, suggesting that the virus has developed a way to prevent the autophagic defense of the host cell. Autophagy may also help cells to defend against intracellular bacteria [106]. Sequestration of intracellular Group A *Streptococci* in autophagosome-like structures protects cells against the bacteria [107]. *Mycobacterium tuberculosis* is normally able to survive inside macrophages by preventing the fusion of phagosomes with lysosomes. Surprisingly, induction of autophagy bypasses the maturation defect, leading to phagolysosome formation and bacterial killing [108].

Macroautophagy also contributes to antigen presentation. Major histocompatibility complex (MHC) class II molecules present products of lysosomal proteolysis to CD4(+) T cells. Extracellular antigen uptake is considered to be the main source of MHC class II ligands. However, it was demonstrated that in MHC class II-positive cells, including dendritic cells, B cells, and epithelial cells, autophagosomes continuously fuse with multivesicular MHC class II-loading compartments [109]. This pathway is of functional relevance, because targeting of the influenza matrix protein 1 to autophagosomes enhances its MHC class II presentation to CD4(+) T cells. Thus it seems that macroautophagy efficiently delivers cytosolic proteins for MHC class II presentation and can improve helper T cell stimulation.

5.3. Cell death

Autophagy also seems to have roles in programmed cell death [110,111]. Type II programmed cell death, or autophagic cell death, was originally described in mammary carcinoma cells [112,113]. Autophagy proteins were shown to be necessary for cell death under certain conditions, such as in apoptosis-defective cells [114–116]. In this scenario autophagy is needed for the execution of cell death. Under other conditions, such as nutrient starvation, autophagy protects cells against apoptosis by providing nutrients [117–119]. The regulation of apoptosis and autophagy are linked via the antiapoptotic protein Bcl-2. Bcl-2 inhibits Beclin 1-dependent autophagy by binding to Beclin 1 and preventing its association with Vps34 [52]. This anti-autophagy function of Bcl-2 was proposed to help maintain autophagy at levels that are compatible with cell survival, rather than cell death.

Lipids may also regulate autophagy and its outcome to the host cell. Ceramide and sphingosine 1-phosphate, a metabolite of ceramide, both induce autophagy in mammalian cells [120]. The outcome on cell survival is however different: ceramide promotes cell death, while sphingosine 1-phosphate increases cell survival. Ceramide is part of the signaling cascade initiated by chemotherapy, while

sphingosine 1-phosphate is part of the signaling cascade initiated by starvation. Beclin 1 level and the autophagy response are stronger during ceramide signaling [121].

Autophagy has functions in cell death during development [122]. *atg* genes are necessary for the clearance of apoptotic cells during embryonic development in mice [123]. Autophagy contributes to dead-cell clearance during programmed cell death by maintaining cellular energy levels in the dying cells, thereby allowing the generation of cell surface and secreted signals that then promote engulfment of cell corpses by neighboring cells. Autophagy is also indispensable for the execution of certain types of cell death during development. The degradation of *Drosophila* salivary glands by type II programmed cell death depends on autophagy [73].

5.4. Aging and longevity

Finally, autophagy also contributes to longevity [124]. Reduced caloric intake increases longevity in several animal species. Increased autophagic turnover of cytoplasmic constituents including mitochondria was shown to contribute to the longer life in the dieting animals [125]. Further evidence that autophagy contributes to longevity come from *Caenorhabditis elegans* mutants possessing a defective insulin receptor (*daf2* mutant), which live longer than control worms. The increased lifetime of these mutant worms depends on a functional autophagic pathway [126]. Moreover, knockdown of autophagy gene products including Atg7 and Atg12 were shown to shorten the lifespan of both wild type and *daf2* mutant *C. elegans* [127]. Further, promoting basal levels of autophagy in the nervous system of adult *Drosophila* enhances longevity of the flies [128]. Together these studies give strong support for a role of autophagy in the prevention of aging.

Fig. 6 summarizes the physiological functions of autophagy described above.

6. Autophagy and disease

6.1. Cancer

Impaired autophagy contributes to cancer development [2,129,130]. Beclin 1 is monoallelically deleted in a large proportion of human breast and ovarian cancers. Over-expression of Beclin 1 in a breast cancer cell line increases autophagy and decreases the growth and tumorigenicity of these cells [131]. Mice with heterozygous deletion of Beclin 1 have less autophagy and more tumors than control mice [132,133]. Further, the other autophagy-promoting components of the Beclin 1/Vps34 complex, UVRAG and Ambra 1 (Fig. 4), are also tumor suppressors [48,49]. Moreover, knockout of Bif-1, also part of the Beclin 1 complex, significantly enhances the development of

spontaneous tumors in mice [50]. On the other hand, binding of the proto-oncogenic proteins Bcl-2 or Bcl-XL to Beclin 1 inhibit autophagy [51,52]. In addition to the Beclin 1 complex, other tumor suppressors also enhance autophagy. PTEN is a phosphatase that decreases the concentration of class I PI3 kinase product and enhances autophagy [72]. PTEN is also a tumor suppressor [134]. Further, the activities of Ras and class I PI3-kinases inhibit autophagy and promote cell growth. Ras is mutated and class I PI3 kinases are upregulated in many cancers [135,136].

The results described above show that autophagy contributes to the prevention of tumorigenesis. Impaired autophagy can contribute to tumor formation via impaired regulation of cell growth, and/or via decreased cell death. In addition, it was shown that failure to sustain metabolism via autophagy results in increased DNA damage. This chromosomal instability increases tumor progression [137].

In advanced cancers, autophagy may have the opposite effect on the tumor development. Autophagy can benefit the progression of the tumor because it can provide nutrients during starvation [129,130,138]. In addition, autophagy was recently shown to improve the survival of p53-deficient cancer cells under starvation or hypoxic conditions [139]. These findings suggest that autophagy inhibition, rather than stimulation, might be beneficial in treatment of advanced cancer.

6.2. Neurodegeneration

Many age-related neurodegenerative diseases are characterized by the accumulation of ubiquitin-positive protein aggregates in affected brain regions. These misfolded, aberrant proteins can disrupt neuronal function and cause neurodegeneration. As described earlier, autophagy is necessary for the clearance of aggregate-prone proteins that are toxic especially for post-mitotic cells like neurons [130]. Tissue-specific knockout of the autophagy genes in neurons causes a massive accumulation of ubiquitin-positive protein aggregates and neurodegeneration in mice [93,94], indicating that autophagy is needed for the constitutive clearance of aggregate-prone proteins. Autophagy was recently shown to enhance the clearance of Huntingtin, mutant tau, synphilin 1 and α -synuclein, but not AIMP2 (p38) and mutant desmin [140]. This study indicates that autophagy is not able to degrade all protein aggregates. However, the role of autophagy has been demonstrated in Huntington's disease, caused by mutations in Huntingtin, and familial Parkinson's disease, caused by mutations in α -synuclein. Enhanced autophagy in animal models of these diseases improves clearance of the aggregated proteins and reduces the symptoms of neurodegeneration [95,141].

ESCRT complexes are necessary for the biogenesis of multivesicular endosomes. As described earlier, multivesicular endosomes are necessary for the maturation of autophagosomes into degradative autolysosomes. Mutations in ESCRT III subunits CHMP2B or mSnf7-2 are associated with two neurodegenerative diseases, frontotemporal dementia and amyotrophic lateral sclerosis. Both diseases are characterized by abnormal ubiquitin-positive protein deposits in affected neurons. Cell lines and fruit flies depleted of CHMP2B or mSnf7-2 show decreased autophagic degradation, increased levels of ubiquitin-positive aggregates and increased neurodegeneration [27,29].

Alzheimer's disease is characterized by the accumulation of extracellular amyloid plaques in the brain. These plaques consist of aggregated β -amyloid ($A\beta$) peptide. Autophagy was proposed to contribute to the production of $A\beta$. Autophagic compartments containing both amyloid precursor protein and $A\beta$ accumulate in dystrophic neurons in Alzheimer brain [142,143]. Purified autophagic vacuoles contain all necessary constituents for $A\beta$ production [142], and autophagic compartments were identified as a major reservoir of intracellular $A\beta$ in the brain of Alzheimer patients and mouse models. The primary cause for the increased accumulation of autophagic compartments in Alzheimer's disease was recently suggested to be their retarded maturation to autolysosomes [144].

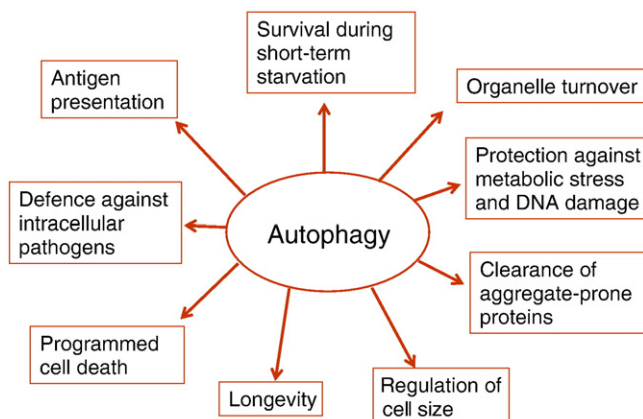


Fig. 6. A summary of the functions of autophagy in health and disease.

A recent study, however, challenges the idea that autophagy contributes to the pathogenesis of Alzheimer's disease. Beclin 1 was shown to be decreased in affected brain regions of patients with Alzheimer disease early in the disease process [145]. Heterozygous deletion of Beclin 1 in mice decreased neuronal autophagy and resulted in neurodegeneration. Transgenic mice expressing human amyloid precursor protein have been used as a mouse model for this disease. Genetic reduction of Beclin 1 expression increased intraneuronal A β accumulation, extracellular A β deposition, and neurodegeneration [145]. Increasing Beclin 1 levels by lentiviral expression reduced both intracellular and extracellular amyloid pathology in these transgenic mice. This study suggests that decreased, not increased, autophagy promotes Alzheimer's disease progression. Further, enhancing autophagy by increasing Beclin 1 levels may have therapeutic potential in this disease.

6.3. Autophagy and lysosomal storage diseases

Niemann–Pick type C is a neurodegenerative lipid storage disorder characterized by a disruption of sphingolipid and cholesterol trafficking caused by mutations in either of two genes, *npc1* and *npc2*. The disease produces cognitive impairment, ataxia and death, often in childhood. Cells deficient in *npc* genes show increased expression of Beclin 1 and LC3-II, the autophagosome-specific form of LC3, suggesting autophagy is induced [146]. Increased levels of LC3-II have also been observed in *npc*-deficient brain tissue [147]. *npc*-Deficient cerebellar Purkinje neurons undergo a cell death that was proposed to depend on autophagy [148], suggesting increased autophagy may be harmful for neurons in NPC patients.

Most lysosomal storage diseases are caused by deficiencies of lysosomal hydrolases, leading to accumulation of undegraded substrate and other material in the lysosomal compartment. Lysosomal accumulation of substrates can also affect autophagosome–lysosome fusion. Autophagosomes accumulate in brain and isolated cell lines of mouse models of two lysosomal storage diseases associated with severe neurodegeneration, multiple sulfatase deficiency and mucopolysaccharidosis type IIIA [149]. Significantly reduced colocalization of the lysosomal membrane protein LAMP-1 with the autophagosome marker LC3 indicates that the fusion of lysosomal compartments with autophagosomes is impaired. In addition, cell lines isolated from these mice have decreased ability to degrade aggregate-prone proteins and show accumulation of polyubiquitinated proteins and non-functional mitochondria. Thus, neurodegeneration observed in many lysosomal storage diseases may be at least partially due to impaired autophagic degradation, which is particularly vital for neurons.

6.4. Autophagy and muscle disorders

Autophagic vacuoles are a frequent feature in numerous muscular disorders. Such a pathological situation can be observed in patients suffering from Danon disease, an inherited disease resulting from null mutations in the lysosomal membrane protein LAMP-2 [83]. LAMP-2 deficiency leads to a fatal cardiomyopathy and myopathy sometimes associated with mental retardation [150]. Accumulation of autophagic vacuoles in the heart and skeletal muscle are hallmarks of the disease [84]. Studies in LAMP-2 deficient mice revealed in part similar findings [85]. Fifty percent of these mice die at an early postnatal age with massive accumulation of autophagic vacuoles in several tissues including liver, pancreas, spleen, kidney, lymph nodes, neutrophilic leukocytes, skeletal muscle, and heart. Autophagic vacuoles containing single mitochondria were frequently observed in cardiomyocytes [151] indicating that mitochondria are a main target for autophagic degradation in muscle tissues. These cellular alterations lead to a reduced contractility and an increased size of the heart in LAMP-2 knockout mice. This is in agreement with the finding that cardiomyopathy is the hallmark in Danon disease patients [83]. Biochemical and

electron microscopy studies reveal that a retarded consumption, rather than increased formation, of autophagic vacuoles leads to their accumulation [152]. LAMP-double deficient fibroblasts lack both LAMP-2 and the structurally related LAMP-1 protein. These cells show a defect in the final maturation steps of late autophagic vacuoles, involving retarded fusion with lysosomes [33,119]. Interestingly, recruitment of the small GTPase Rab7 to autophagosomes is retarded in these cells [32].

Inhibition of lysosomal fusion using hydroxy-chloroquine causes similar vacuolar alterations and myopathies to Danon disease, confirming the important role of lysosome–autophagosome fusion for muscle cell physiology [153]. Impaired autophagosome maturation may also be related to other types of diseases such as X-linked myopathy with excessive autophagy, infantile autophagic vacuolar myopathy, adult-onset autophagic vacuolar myopathy with multi-organ involvement, and X-linked congenital autophagic vacuolar myopathy [154]. The molecular defects in these disorders are still unknown.

Although altered autophagy has been observed in various heart diseases, including cardiac hypertrophy and heart failure, it remains unclear whether autophagy plays a beneficial or detrimental role in these diseases. As mentioned earlier, tissue-specific deletion of *atg5* in heart causes cardiac hypertrophy and contractile dysfunction [86]. In addition, increased levels of ubiquitinated proteins and abnormal mitochondria are found, especially after treatment with pressure overload or β -adrenergic stress. This suggests that autophagy is needed in the heart to ensure the availability of sufficient energy substrates and to control cardiomyocyte size and global cardiac structure and function.

6.5. Common aspects in autophagy and phagocytosis

As described above, autophagy plays a role in innate immunity against intracellular pathogens [104,105] by clearing microbes directly via ingestion into autophagosomes for subsequent degradation in autolysosomes [108,155]. Similar to the process of intracellular defense, phagocytosis is an evolutionary conserved mechanism involved in the removal of extracellular organisms. Interestingly, it was found that the phagocytic and autophagic pathways are linked. Toll like receptor (TLR) activation triggers the recruitment of autophagy proteins LC3, Atg5 and Atg7 to the phagosomal pathway. Before these events Beclin 1 and class III PI3-kinase activity are found in phagosomes [156]. These autophagy-specific proteins are recruited to the phagosome, while almost no classical autophagosomes are observed in the cells. Phagosome fusion with lysosomes is then initiated, leading to acidification and killing of the ingested organisms. Thus, engaging the autophagy pathway via TLR signaling (especially TLR7 through its binding to single-stranded RNA) enhances phagosome maturation and destruction of pathogens [157]. This underscores the intimate link between autophagy and phagocytosis.

As mentioned earlier, *M. tuberculosis* is able to survive inside macrophages by preventing the fusion of phagosomes with lysosomes, but induction of autophagy bypasses the maturation defect, leading to phagolysosome formation and bacterial killing [108]. Autophagy induction induces the localization of Beclin 1 and LC3 to phagosomes, suggesting the phagosomes are diverted to an autophagosome-like compartment that is then able to fuse with lysosomes.

The association between autophagy and phagocytosis is also underlined by studies with cells lacking either one or both LAMPs [33]. As described above, autophagosome–lysosome fusion is impaired in LAMP-double deficient cells [32]. Whereas macrophages and fibroblasts from LAMP-1 or LAMP-2 single-deficient mice display normal fusion of lysosomes with phagosomes, in LAMP-double knockout fibroblasts phagosomes are unable to recruit late endosomal/lysosomal markers and phagocytosis is arrested prior to the acquisition of Rab7 [158]. Interestingly, the maturation of Neisseria-

containing phagosomes is also disturbed and cells lacking both LAMP proteins fail to kill the engulfed pathogens [159]. The maturation block caused by LAMP deficiency is at least partially due to the inability of autophagosomes and phagosomes to undergo dynein/dynactin-mediated centripetal movement along microtubules towards lysosomes [158]. Interestingly LAMP-2 single knockout mice show an impaired phagosomal maturation in neutrophilic leucocytes. The impairment of this innate immune defense mechanism leads to periodontitis, which is one of the most widespread infectious diseases worldwide. The retarded clearance of bacterial pathogens is due to an inefficient fusion between lysosomes and phagosomes, leading to less efficient killing of the ingested pathogens [160,161]. Neutrophils of the LAMP-2 knockout mice also contain an accumulation of autophagic vacuoles [85,160], which is likely also due to impaired fusion of autophagosomes with lysosomes.

Taken together these observations indicate that fusion with lysosomes is required to successfully complete both autophagosome and phagosome maturation that is necessary for efficient degradation of the cargo. Further, the results show that the maturation of autophagosomes and phagosomes share common features, because both processes are impaired with similar tissue and cell specificity in LAMP-2 deficient mice and LAMP-double deficient cell lines.

7. Conclusions

Degradation of cytosolic proteins in lysosomes via autophagy has turned out to have numerous, partly unexpected, roles in health and disease. Autophagy has been shown to contribute to innate and adaptive immunity and longevity, and to the prevention of cancer and neurodegeneration, just to mention a few of its newly-revealed functions. Treatments for human diseases that specifically target autophagy do not yet exist. It is likely, however, that such treatments will emerge in the future, once the molecular mechanisms of the processes involved in autophagy regulation have been clarified and suitable inducers and inhibitors for clinical trials have been identified.

References

- E.L. Eskelinen, New insights into the mechanisms of macroautophagy in mammalian cells, *Int. Rev. Cell. Mol. Biol.* 266 (2008) 207–240.
- M. Kundu, C.B. Thompson, Autophagy: basic principles and relevance to disease, *Annu. Rev. Pathol.* 3 (2008) 427–455.
- J. Ahlberg, L. Marzella, H. Glaumann, Uptake and degradation of proteins by isolated rat liver lysosomes. Suggestion of a microautophagic pathway of proteolysis, *Lab. Invest.* 47 (1982) 523–532.
- A.M. Cuervo, J.F. Dice, A receptor for the selective uptake and degradation of proteins by lysosomes, *Science* 273 (1996) 501–503.
- W. Liou, H.J. Geuze, M.J.H. Geelen, J.W. Slot, The autophagic and endocytic pathways converge at the nascent autophagic vacuole, *J. Cell. Biol.* 136 (1997) 61–70.
- T.O. Berg, M. Fengsrud, P.E. Stromhaug, T. Berg, P.O. Seglen, Isolation and characterization of rat liver amphisomes. Evidence for fusion of autophagosomes with both early and late endosomes, *J. Biol. Chem.* 273 (1998) 21883–21892.
- P.B. Gordon, H. Hoyvik, P.O. Seglen, Prelysosomal and lysosomal connections between autophagy and endocytosis, *Biochem. J.* 283 (1992) 361–369.
- B.P. Lawrence, W.J. Brown, Autophagic vacuoles rapidly fuse with pre-existing lysosomes in cultured hepatocytes, *J. Cell. Sci.* 102 (1992) 515–526.
- W.A. Dunn, Studies on the mechanisms of autophagy: maturation of the autophagic vacuole, *J. Cell. Biol.* 110 (1990) 1935–1945.
- E.L. Punnonen, S. Autio, H. Kaija, H. Reunanen, Autophagic vacuoles fuse with the prelysosomal compartment in cultured rat fibroblasts, *Eur. J. Cell. Biol.* 61 (1993) 54–66.
- J. Tooze, M. Hollinshead, T. Ludwig, K. Howell, B. Hoflack, H. Kern, In exocrine pancreas, the basolateral endocytic pathway converges with the autophagic pathway immediately after the early endosome, *J. Cell. Biol.* 111 (1990) 329–345.
- E.L. Eskelinen, The mystery of the membranes, *Autophagy* 4 (2008) 3–4.
- J. Kim, W.P. Huang, P.E. Stromhaug, D.J. Klionsky, Convergence of multiple autophagy and cytoplasm to vacuole components to a perivacuolar membrane compartment prior to de novo vesicle formation, *J. Biol. Chem.* 277 (2002) 763–773.
- K. Suzuki, T. Kirisako, Y. Kamada, N. Mizushima, T. Noda, Y. Ohsumi, The pre-autophagosomal structure organized by concerted functions of APG genes is essential for autophagosome formation, *EMBO J.* 20 (2001) 5971–5981.
- Z. Xie, D.J. Klionsky, Autophagosome formation: core machinery and adaptations, *Nat. Cell. Biol.* 9 (2007) 1102–1109.
- N. Mizushima, A. Yamamoto, M. Hatano, Y. Kobayashi, Y. Kabeya, K. Suzuki, T. Tokuhisa, Y. Ohsumi, T. Yoshimori, Dissection of autophagosome formation using Apg5-deficient mouse embryonic stem cells, *J. Cell. Biol.* 152 (2001) 657–667.
- M. Hamasaki, T. Noda, Y. Ohsumi, The early secretory pathway contributes to autophagy in yeast, *Cell. Struct. Funct.* 28 (2003) 49–54.
- N. Ishihara, M. Hamasaki, S. Yokota, K. Suzuki, Y. Kamada, A. Kihara, T. Yoshimori, T. Noda, Y. Ohsumi, Autophagosome requires specific early Sec proteins for its formation and NSF/SNARE for vacuolar fusion, *Mol. Biol. Cell.* 12 (2001) 3690–3702.
- T.Y. Nazarko, J. Huang, J.M. Nicaud, D.J. Klionsky, A.A. Sibirny, Trs85 is required for macroautophagy, pexophagy and cytoplasm to vacuole targeting in *Yarrowia lipolytica* and *Saccharomyces cerevisiae*, *Autophagy* 1 (2005) 37–45.
- K. Meiling-Wesse, U.D. Epple, R. Krick, H. Barth, A. Appelles, C. Voss, E.L. Eskelinen, M. Thumm, Trs85 (Gsg1), a component of the TRAPP complexes, is required for the organization of the preautophagosomal structure during selective autophagy via the Cvt pathway, *J. Biol. Chem.* 280 (2005) 33669–33678.
- F. Reggiori, C.W. Wang, U. Nair, T. Shintani, H. Abeliovich, D.J. Klionsky, Early stages of the secretory pathway, but not endosomes, are required for Cvt vesicle and autophagosome assembly in *Saccharomyces cerevisiae*, *Mol. Biol. Cell.* 15 (2004) 2189–2204.
- K. Suzuki, Y. Ohsumi, Molecular machinery of autophagosome formation in yeast, *Saccharomyces cerevisiae*, *FEBS Lett.* 581 (2007) 2156–2161.
- E.L. Eskelinen, Maturation of autophagic vacuoles in mammalian cells, *Autophagy* 1 (2005) 1–10.
- C.M. Fader, D. Sanchez, M. Furlan, M.I. Colombo, Induction of autophagy promotes fusion of multivesicular bodies with autophagic vacuoles in k562 cells, *Traffic* 9 (2008) 230–250.
- A. Nara, N. Mizushima, A. Yamamoto, Y. Kabeya, Y. Ohsumi, T. Yoshimori, SKD1 AAA ATPase-dependent endosomal transport is involved in lysosome formation, *Cell. Struct. Funct.* 27 (2002) 29–37.
- C. Liang, J.S. Lee, K.S. Inn, M.U. Gack, Q. Li, E.A. Roberts, I. Vergne, V. Deretic, P. Feng, C. Akazawa, J.U. Jung, Beclin1-binding UVRAG targets the class C Vps complex to coordinate autophagosome maturation and endocytic trafficking, *Nat. Cell. Biol.* 10 (2008) 776–787.
- J.A. Lee, A. Beigneux, S.T. Ahmad, S.G. Young, F.B. Gao, ESCRT-III dysfunction causes autophagosome accumulation and neurodegeneration, *Curr. Biol.* 17 (2007) 1561–1567.
- K. Tamai, N. Tanaka, A. Nara, A. Yamamoto, I. Nakagawa, T. Yoshimori, Y. Ueno, T. Shimosegawa, K. Sugamura, Role of Hrs in maturation of autophagosomes in mammalian cells, *Biochem. Biophys. Res. Commun.* 360 (2007) 721–727.
- M. Filimonenko, S. Stuffers, C. Raiborg, A. Yamamoto, L. Malerod, E.M. Fisher, A. Isaacs, A. Brech, H. Stenmark, A. Simonsen, Functional multivesicular bodies are required for autophagic clearance of protein aggregates associated with neurodegenerative disease, *J. Cell Biol.* 179 (2007) 485–500.
- T.E. Rusten, T. Vaccari, K. Lindmo, L.M. Rodahl, I.P. Nezis, C. Sem-Jacobsen, F. Wendler, J.P. Vincent, A. Brech, D. Bilder, H. Stenmark, ESCRTs and Fab1 regulate distinct steps of autophagy, *Curr. Biol.* 17 (2007) 1817–1825.
- M.G. Gutierrez, D.B. Munafo, W. Beron, M.I. Colombo, Rab7 is required for the normal progression of the autophagic pathway in mammalian cells, *J. Cell Sci.* 117 (2004) 2687–2697.
- S. Jäger, C. Bucci, I. Tanida, T. Ueno, E. Kominami, P. Saftig, E.L. Eskelinen, Role for Rab7 in maturation of late autophagic vacuoles, *J. Cell Sci.* 117 (2004) 4837–4848.
- E.L. Eskelinen, C.K. Schmidt, S. Neu, M. Willenborg, G. Fuentes, N. Salvador, Y. Tanaka, R. Lüllmann-Rauch, D. Hartmann, J. Heeren, K. von Figura, E. Knecht, P. Saftig, Disturbed cholesterol traffic but normal proteolytic function in LAMP-1/LAMP-2 double deficient fibroblasts, *Mol. Biol. Cell.* 15 (2004) 3132–3145.
- B. Ravikumar, A. Acevedo-Arozena, S. Imarisio, Z. Berger, C. Vacher, C.J. O’Kane, S.D. Brown, D.C. Rubinsztein, Dynein mutations impair autophagic clearance of aggregate-prone proteins, *Nat. Genet.* 37 (2005) 771–776.
- R. Kochl, X.W. Hu, E.Y. Chan, S.A. Tooze, Microtubules facilitate autophagosome formation and fusion of autophagosomes with endosomes, *Traffic* 7 (2006) 129–145.
- K. Lindmo, A. Simonsen, A. Brech, K. Finley, T.E. Rusten, H. Stenmark, A dual function for Deep orange in programmed autophagy in the *Drosophila melanogaster* fat body, *Exp. Cell Res.* 312 (2006) 2018–2027.
- T. Darsow, S.E. Rieder, S.D. Emr, A multispecificity syntaxin homologue, Vam3p, essential for autophagic and biosynthetic protein transport to the vacuole, *J. Cell Biol.* 138 (1997) 517–529.
- D.J. Klionsky, *Autophagy*, 1 ed. Landes Bioscience/Eurekah.com, Georgetown, 2004.
- U. Nair, D.J. Klionsky, Molecular mechanisms and regulation of specific and nonspecific autophagy pathways in yeast, *J. Biol. Chem.* 280 (2005) 41785–41788.
- T. Yorimitsu, D.J. Klionsky, Autophagy: molecular machinery for self-eating, *Cell Death Differ.* 12 Suppl 2 (2005) 1542–1552.
- D.J. Klionsky, J.M. Cregg, W.A.J. Dunn, S.D. Emr, Y. Sakai, I.V. Sandoval, A. Sibirny, S. Subramani, M. Thumm, M. Veenhuis, Y. Ohsumi, A unified nomenclature for yeast autophagy-related genes, *Dev. Cell* 5 (2003) 539–545.
- Y. Kamada, T. Funakoshi, T. Shintani, K. Nagano, M. Ohsumi, Y. Ohsumi, Tor-mediated induction of autophagy via an Apg1 protein kinase complex, *J. Cell Biol.* 150 (2000) 1507–1513.
- E.Y. Chan, S. Kir, S.A. Tooze, siRNA screening of the kinome identifies ULK1 as a multi-domain modulator of autophagy, *J. Biol. Chem.* 282 (2007) 25464–25474.
- A.R. Young, E.Y. Chan, X.W. Hu, R. Kochl, S.G. Crawshaw, S. High, D.W. Hailey, J. Lippincott-Schwartz, S.A. Tooze, Starvation and ULK1-dependent cycling of

- mammalian Atg9 between the TGN and endosomes, *J. Cell Sci.* 119 (2006) 3888–3900.
- [45] A. Kihara, Y. Kabeya, Y. Ohsumi, T. Yoshimori, Beclin–phosphatidylinositol 3-kinase complex functions at the trans-Golgi network, *EMBO Rep.* 2 (2001) 330–335.
- [46] A. Tassa, M.P. Roux, D. Attaix, D.M. Bechet, Class III phosphoinositide 3-kinase-beclin1 complex mediates the amino acid-dependent regulation of autophagy in C2C12 myotubes, *Biochem. J.* 376 (2003) 577–586.
- [47] C. Panaretou, J. Domin, S. Cockcroft, M.D. Waterfield, Characterization of p150, an adaptor protein for the human phosphatidylinositol (PtdIns) 3-kinase. Substrate presentation by phosphatidylinositol transfer protein to the p150.PtdIns 3-kinase complex, *J. Biol. Chem.* 272 (1997) 2477–2485.
- [48] C. Liang, P. Feng, B. Ku, I. Dotan, D. Canaani, B.H. Oh, J.U. Jung, Autophagic and tumour suppressor activity of a novel Beclin1-binding protein UVRAG, *Nat. Cell Biol.* 8 (2006) 688–699.
- [49] G.M. Fimia, A. Stoykova, A. Romagnoli, L. Giunta, S. Di Bartolomeo, R. Nardacci, M. Corazzi, C. Fuoko, A. Ucar, P. Schwartz, P. Gruss, M. Piacentini, K. Chowdhury, F. Cecconi, Ambra 1 regulates autophagy and development of the nervous system, *Nature* 447 (2007) 1121–1125.
- [50] Y. Takahashi, D. Coppola, N. Matsushita, H.D. Cuaing, M. Sun, Y. Sato, C. Liang, J.U. Jung, J.Q. Cheng, J.J. Mul, W.J. Pledger, H.G. Wang, Bif-1 interacts with Beclin 1 through UVRAG and regulates autophagy and tumorigenesis, *Nat. Cell Biol.* 9 (2007) 1142–1151.
- [51] M.C. Maiuri, G. Le Toumelin, A. Criollo, J.C. Rain, F. Gautier, P. Juin, E. Tasdemir, G. Pierron, K. Troulinaki, N. Tavernarakis, J.A. Hickman, O. Geneste, G. Kroemer, Functional and physical interaction between Bcl-X(L) and a BH3-like domain in Beclin-1, *EMBO J.* 26 (2007) 2527–2539.
- [52] S. Pattingre, A. Tassa, X. Qu, R. Garuti, X.H. Liang, N. Mizushima, M. Packer, M.D. Schneider, B. Levine, Bcl-2 antiapoptotic proteins inhibit Beclin 1-dependent autophagy, *Cell* 122 (2005) 927–939.
- [53] Y. Ohsumi, Molecular dissection of autophagy: two ubiquitin-like systems, *Nat. Rev. Mol. Cell Biol.* 2 (2001) 211–216.
- [54] H. Nakatogawa, Y. Ichimura, Y. Ohsumi, Atg8, a ubiquitin-like protein required for autophagosome formation, mediates membrane tethering and hemifusion, *Cell* 130 (2007) 165–178.
- [55] Y. Kabeya, N. Mizushima, T. Ueno, A. Yamamoto, T. Kirisako, T. Noda, E. Kominami, Y. Ohsumi, T. Yoshimori, LC3, a mammalian homologue of yeast Apg8p, is localized in autophagosome membranes after processing, *EMBO J.* 19 (2000) 5720–5728.
- [56] M. Kadowaki, M.R. Karim, A. Carpi, G. Miotto, Nutrient control of macroautophagy in mammalian cells, *Mol. Aspects Med.* 27 (2006) 426–443.
- [57] P. Codogno, A.J. Meijer, Autophagy and signaling: their role in cell survival and cell death, *Cell Death Differ.* 12 Suppl 2 (2005) 1509–1518.
- [58] A.J. Meijer, P. Codogno, Signalling and autophagy regulation in health, aging and disease, *Mol. Aspects Med.* 27 (2006) 411–425.
- [59] Z. Tallóczy, W. Jiang, H.W. Virgin IV, D. Leib, D. Scheuner, R. Kaufman, E.L. Eskelinen, B. Levine, Regulation of starvation and virus-induced autophagy by the eIF2a kinase signaling pathway, *Proc. Natl. Acad. Sci. U. S. A.* 99 (2002) 190–195.
- [60] T. Kanazawa, I. Taneike, R. Akaishi, F. Yoshizawa, N. Furuya, S. Fujimura, M. Kadowaki, Amino acids and insulin control autophagic proteolysis through different signaling pathways in relation to mTOR in isolated rat hepatocytes, *J. Biol. Chem.* 279 (2004) 8452–8459.
- [61] Y. Wei, S. Pattingre, S. Sinha, M. Bassik, B. Levine, JNK1-mediated phosphorylation of Bcl-2 regulates starvation-induced autophagy, *Mol. Cell* 30 (2008) 678–688.
- [62] P. Codogno, A.J. Meijer, in: D.J. Klionsky (Ed.), *Autophagy*, Landes Bioscience/Eurekah.com, Georgetown, 2004, pp. 26–47.
- [63] E. Ogier-Denis, S. Pattingre, J. El Benna, P. Codogno, Erk1/2-dependent phosphorylation of Ga-interacting protein stimulates its GTPase accelerating activity and autophagy in human colon cancer cells, *J. Biol. Chem.* 275 (2000) 39090–39095.
- [64] S. Pattingre, C. Bauvy, P. Codogno, Amino acids interfere with the ERK1/2-dependent control of macroautophagy by controlling the activation of Raf-1 in human colon cancer HT-29 cells, *J. Biol. Chem.* 278 (2003) 16667–16674.
- [65] S. Pattingre, L. Espert, M. Biard-Piechaczyk, P. Codogno, Regulation of macroautophagy by mTOR and Beclin 1 complexes, *Biochimie* 90 (2008) 313–323.
- [66] E.F.C. Blommaert, J.J.F.P. Luiken, P.J.E. Blommaert, G.M. van Woerkom, A.J. Meijer, Phosphorylation of ribosomal protein S6 is inhibitory for autophagy in isolated rat hepatocytes, *J. Biol. Chem.* 270 (1995) 2320–2326.
- [67] A.J. Meijer, P.F. Dubbelhuis, Amino acid signalling and the integration of metabolism, *Biochem. Biophys. Res. Commun.* 313 (2004) 397–403.
- [68] A.J. Meijer, P. Codogno, AMP-activated protein kinase and autophagy, *Autophagy* 3 (2007) 238–240.
- [69] M. Hoyer-Hansen, L. Bastholm, P. Szyniarowski, M. Campanella, G. Szabadkai, T. Farkas, K. Bianchi, N. Fehrenbacher, F. Elling, R. Rizzuto, I.S. Mathiasen, M. Jaattela, Control of macroautophagy by calcium, calmodulin-dependent kinase kinase- β and Bcl-2, *Mol. Cell* 25 (2007) 193–205.
- [70] E.L. Eskelinen, A.R. Prescott, J. Cooper, S.M. Brachmann, L. Wang, X. Tang, J.M. Backer, J.M. Lucocq, Inhibition of autophagy in mitotic animal cells, *Traffic* 3 (2002) 878–893.
- [71] A. Petiot, E. Ogier-Denis, E.F.C. Blommaert, A.J. Meijer, P. Codogno, Distinct classes of phosphatidylinositol 3'-kinase are involved in signaling pathways that control macroautophagy in HT-29 cells, *J. Biol. Chem.* 275 (2000) 992–998.
- [72] S. Arico, A. Petiot, C. Bauvy, P.F. Dubbelhuis, A.J. Meijer, P. Codogno, E. Ogier-Denis, The tumor suppressor PTEN positively regulates macroautophagy by inhibiting the phosphatidylinositol 3-kinase/protein kinase B pathway, *J. Biol. Chem.* 276 (2001) 35243–35246.
- [73] D.L. Berry, E.H. Baehrecke, Growth arrest and autophagy are required for salivary gland cell degradation in *Drosophila*, *Cell* 131 (2007) 1137–1148.
- [74] Y.V. Budovskaya, J.S. Stephan, F. Reggiori, D.J. Klionsky, P.K. Herman, The Ras/cAMP-dependent protein kinase signaling pathway regulates an early step of the autophagy process in *Saccharomyces cerevisiae*, *J. Biol. Chem.* 279 (2004) 20663–20671.
- [75] S. Furuta, E. Hidaka, A. Ogata, S. Yokota, T. Kamata, Ras is involved in the negative control of autophagy through the class I PI3-kinase, *Oncogene* 23 (2004) 3898–3904.
- [76] C. Mammucari, G. Milan, V. Romanello, E. Masiero, R. Rudolf, P. Del Piccolo, S.J. Burden, R. Di Lisi, C. Sandri, J. Zhao, A.L. Goldberg, S. Schiaffino, M. Sandri, FoxO3 controls autophagy in skeletal muscle in vivo, *Cell. Metab.* 6 (2007) 458–471.
- [77] J. Zhao, J.J. Brault, A. Schild, P. Cao, M. Sandri, S. Schiaffino, S.H. Lecker, A.L. Goldberg, FoxO3 coordinately activates protein degradation by the autophagic/lysosomal and proteasomal pathways in atrophying muscle cells, *Cell Metab.* 6 (2007) 472–483.
- [78] T.P. Neufeld, E.H. Baehrecke, Eating on the fly: function and regulation of autophagy during cell growth, survival and death in *Drosophila*, *Autophagy* 4 (2008) 557–562.
- [79] R. Scherz-Shouval, Z. Elazar, ROS, mitochondria and the regulation of autophagy, *Trends Cell Biol.* 17 (2007) 422–427.
- [80] A.M. Cuervo, J.F. Dice, Lysosomes, a meeting point of proteins, chaperones, and proteases, *J. Mol. Med.* 76 (1998) 6–12.
- [81] G. Fuertes, J.J. Martin De Llano, A. Villarroya, A.J. Rivett, E. Knecht, Changes in the proteolytic activities of proteasomes and lysosomes in human fibroblasts produced by serum withdrawal, amino-acid deprivation and confluent conditions, *Biochem. J.* 375 (2003) 75–86.
- [82] A. Kuma, M. Hatano, M. Matsui, A. Yamamoto, H. Nakaya, T. Yoshimori, Y. Ohsumi, T. Tokuhisa, N. Mizushima, The role of autophagy during the early neonatal starvation period, *Nature* 432 (2004) 1032–1036.
- [83] I. Nishino, J. Fu, K. Tanji, T. Yamada, S. Shimojo, T. Koori, M. Mora, J.E. Riggs, S.J. Oh, Y. Koga, C.M. Sue, A. Yamamoto, N. Murakami, S. Shanske, E. Byrne, E. Bonilla, I. Nonaka, S. DiMauro, M. Hirano, Primary LAMP-2 deficiency causes X-linked vacuolar cardiomyopathy and myopathy (Danon disease), *Nature* 406 (2000) 906–910.
- [84] I. Nishino, Autophagic vacuolar myopathies, *Curr. Neurol. Neurosci. Rep.* 3 (2003) 64–69.
- [85] Y. Tanaka, G. Guhde, A. Suter, E.L. Eskelinen, D. Hartmann, R. Lüllmann-Rauch, P.M. L. Janssen, J. Blanz, K. von Figura, P. Saftig, Accumulation of autophagic vacuoles and cardiomyopathy in LAMP-2-deficient mice, *Nature* 406 (2000) 902–906.
- [86] A. Nakai, O. Yamaguchi, T. Takeda, Y. Higuchi, S. Hikoso, M. Taniike, S. Omiya, I. Mizote, Y. Matsumura, M. Asahi, K. Nishida, M. Hori, N. Mizushima, K. Otsu, The role of autophagy in cardiomyocytes in the basal state and in response to hemodynamic stress, *Nat. Med.* 13 (2007) 619–624.
- [87] I. Kim, S. Rodriguez-Enriquez, J.J. Lemasters, Selective degradation of mitochondria by mitophagy, *Arch. Biochem. Biophys.* 462 (2007) 245–253.
- [88] R. Scherz-Shouval, E. Shvets, E. Fass, H. Shorer, L. Gil, Z. Elazar, Reactive oxygen species are essential for autophagy and specifically regulate the activity of Atg4, *EMBO J.* 26 (2007) 1749–1760.
- [89] N. Jurilj, U. Pfeifer, Inhibition of cellular autophagy in kidney tubular cells stimulated to grow by unilateral nephrectomy, *Virchows Arch. B Cell Pathol. Incl. Mol. Pathol.* 59 (1990) 32–37.
- [90] N. Hosokawa, Y. Hara, N. Mizushima, Generation of cell lines with tetracycline-regulated autophagy and a role for autophagy in controlling cell size, *FEBS Lett.* 580 (2006) 2623–2629.
- [91] R.C. Scott, G. Juhasz, T.P. Neufeld, Direct induction of autophagy by Atg1 inhibits cell growth and induces apoptotic cell death, *Curr. Biol.* 17 (2007) 1–11.
- [92] M. Komatsu, S. Waguri, T. Ueno, J. Iwata, S. Murata, I. Tanida, J. Ezaki, N. Mizushima, Y. Ohsumi, Y. Uchiyama, E. Kominami, K. Tanaka, T. Chiba, Impairment of starvation-induced and constitutive autophagy in Atg7-deficient mice, *J. Cell Biol.* 169 (2005) 425–434.
- [93] T. Hara, K. Nakamura, M. Matsui, A. Yamamoto, Y. Nakahara, R. Suzuki-Migishima, M. Yokoyama, K. Mishima, I. Saito, H. Okano, N. Mizushima, Suppression of basal autophagy in neural cells causes neurodegenerative disease in mice, *Nature* 441 (2006) 885–889.
- [94] M. Komatsu, S. Waguri, T. Chiba, S. Murata, J. Iwata, I. Tanida, T. Ueno, M. Koike, Y. Uchiyama, E. Kominami, K. Tanaka, Loss of autophagy in the central nervous system causes neurodegeneration in mice, *Nature* 441 (2006) 880–884.
- [95] B. Ravikumar, C. Vacher, Z. Berger, J.E. Davies, S. Luo, L.G. Oroz, F. Scaravilli, D.F. Easton, R. Duden, C.J. O’Kane, D.C. Rubinsztein, Inhibition of mTOR induces autophagy and reduces toxicity of polyglutamine expansions in fly and mouse models of Huntington disease, *Nat. Genet.* 36 (2004) 585–595.
- [96] D.J. Klionsky, Neurodegeneration: good riddance to bad rubbish, *Nature* 441 (2006) 819–820.
- [97] A. Simonsen, H.C. Birkeland, D.J. Gilooy, N. Mizushima, A. Kuma, T. Yoshimori, T. Slagsvold, A. Brech, H. Stenmark, Alf, a novel FYVE-domain-containing protein associated with protein granules and autophagic membranes, *J. Cell Sci.* 117 (2004) 4239–4251.
- [98] G. Bjorkoy, T. Lamark, T. Johansen, p62/SQSTM1: a missing link between protein aggregates and the autophagy machinery, *Autophagy* 2 (2006) 138–139.
- [99] S. Pankiv, T.H. Clausen, T. Lamark, A. Brech, J.A. Bruun, H. Outzen, A. Overvatn, G. Bjorkoy, T. Johansen, p62/SQSTM1 binds directly to Atg8/LC3 to facilitate degradation of ubiquitinated protein aggregates by autophagy, *J. Biol. Chem.* 282 (2007) 24131–24145.

- [100] M. Ogata, S. Hino, A. Saito, K. Morikawa, S. Kondo, S. Kanemoto, T. Murakami, M. Taniguchi, I. Tanii, K. Yoshinaga, S. Shiosaka, J.A. Hammarback, F. Urano, K. Imaizumi, Autophagy is activated for cell survival after endoplasmic reticulum stress, *Mol. Cell Biol.* 26 (2006) 9220–9231.
- [101] T. Yorimitsu, U. Nair, Z. Yang, D.J. Klionsky, Endoplasmic reticulum stress triggers autophagy, *J. Biol. Chem.* 281 (2006) 30299–30304.
- [102] W.X. Ding, H.M. Ni, W. Gao, Y.F. Hou, M.A. Melan, X. Chen, D.B. Stolz, Z.M. Shao, X.M. Yin, Differential effects of endoplasmic reticulum stress-induced autophagy on cell survival, *J. Biol. Chem.* 282 (2007) 4702–4710.
- [103] S. Tsukamoto, A. Kuma, M. Murakami, C. Kishi, A. Yamamoto, N. Mizushima, Autophagy is essential for preimplantation development of mouse embryos, *Science* 321 (2008) 117–120.
- [104] V. Deretic, Autophagy in innate and adaptive immunity, *Trends Immunol.* 26 (2005) 523–528.
- [105] B. Levine, V. Deretic, Unveiling the roles of autophagy in innate and adaptive immunity, *Nat Rev Immunol* 7 (2007) 767–777.
- [106] K.A. Rich, C. Burkett, P. Webster, Cytoplasmic bacteria can be targets for autophagy, *Cell Microbiol.* 5 (2003) 455–468.
- [107] I. Nakagawa, A. Amano, N. Mizushima, A. Yamamoto, H. Yamaguchi, T. Kamimoto, A. Nara, J. Funao, M. Nakata, K. Tsuda, S. Hamada, T. Yoshimori, Autophagy defends cells against invading group A *Streptococcus*, *Science* 306 (2004) 1037–1040.
- [108] M.G. Gutierrez, S.S. Master, S.B. Singh, G.A. Taylor, M.I. Colombo, V. Deretic, Autophagy is a defense mechanism inhibiting BCG and *Mycobacterium tuberculosis* survival in infected macrophages, *Cell* 119 (2004) 753–766.
- [109] D. Schmid, M. Pypaert, C. Munz, Antigen-loading compartments for major histocompatibility complex class II molecules continuously receive input from autophagosomes, *Immunity* 26 (2007) 79–92.
- [110] L. Galluzzi, J.M. Vicencio, O. Kepp, E. Tasmimir, M.C. Maiuri, G. Kroemer, To die or not to die: that is the autophagic question, *Curr. Mol. Med.* 8 (2008) 78–91.
- [111] F. Scarlatti, R. Granata, A.J. Meijer and P. Codogno, Does autophagy have a license to kill mammalian cells?, *Cell Death Differ* in press (2008).
- [112] W. Bursch, A. Ellinger, H. Kienzl, L. Torok, S. Pandey, M. Sikorska, R. Walker, R.S. Hermann, Active cell death induced by the anti-estrogens tamoxifen and ICI 164 384 in human mammary carcinoma cells (MCF-7) in culture: the role of autophagy, *Carcinogenesis* 17 (1996) 1595–1607.
- [113] W. Bursch, The autophagosomal-lysosomal compartment in programmed cell death, *Cell Death Differ.* 8 (2001) 569–581.
- [114] J.O. Pyo, M.H. Jang, Y.K. Kwon, H.J. Lee, J.I. Jun, H.N. Woo, D.H. Cho, B. Choi, H. Lee, J.H. Kim, N. Mizushima, Y. Ohsumi, Y.K. Jung, Essential roles of Atg5 and FADD in autophagic cell death: Dissection of autophagic cell death into vacuole formation and cell death, *J. Biol. Chem.* 280 (2005) 20722–20729.
- [115] S. Shimizu, T. Kanaseki, N. Mizushima, T. Mizuta, S. Arakawa-Kobayashi, C.B. Thompson, Y. Tsujimoto, Role of Bcl-2 family proteins in a non-apoptotic programmed cell death dependent on autophagy genes, *Nat. Cell Biol.* 6 (2004) 1221–1228.
- [116] L. Yu, A. Alva, H. Su, P. Dutt, E. Freundt, S. Welsh, E.H. Baehrecke, M.J. Lenardo, Regulation of an ATG7–beclin 1 program of autophagic cell death by caspase-8, *Science* 304 (2004) 1500–1502.
- [117] C. Bauvy, P. Gane, S. Arico, P. Codogno, E. Ogier-Denis, Autophagy delays sulindac sulfide-induced apoptosis in the human intestinal colon cancer cell line HT-29, *Exp. Cell Res.* 15 (2001) 139–149.
- [118] P. Boya, R.A. González-Polo, N. Casares, J.L. Perfettini, P. Dessen, N. Larochette, D. Metivier, D. Meley, S. Souquere, T. Yoshimori, G. Pierron, P. Codogno, G. Kroemer, Inhibition of macroautophagy triggers apoptosis, *Mol. Cell Biol.* 25 (2005) 1025–1040.
- [119] R.A. González-Polo, P. Boya, A.L. Pauleau, A. Jalil, N. Larochette, S. Souquere, E.L. Eskelinen, G. Pierron, P. Saftig, G. Kroemer, The apoptosis/autophagy paradox. Autophagic vacuolization before apoptotic death, *J. Cell Sci.* 118 (2005) 3091–3102.
- [120] G. Lavieu, F. Scarlatti, G. Sala, S. Carpentier, T. Levade, R. Ghidoni, J. Botti, P. Codogno, Regulation of autophagy by sphingosine kinase 1 and its role in cell survival during nutrient starvation, *J. Biol. Chem.* 281 (2006) 8518–8527.
- [121] G. Lavieu, F. Scarlatti, G. Sala, T. Levade, R. Ghidoni, J. Botti, P. Codogno, Is autophagy the key mechanism by which the sphingolipid rheostat controls the cell fate decision? *Autophagy* 3 (2007) 45–47.
- [122] A. Meléndez, T.P. Neufeld, The cell biology of autophagy in metazoans: a developing story, *Development* 135 (2008) 2347–2360.
- [123] X. Qu, Z. Zou, Q. Sun, K. Luby-Phelps, P. Cheng, R.N. Hogan, C. Gilpin, B. Levine, Autophagy gene-dependent clearance of apoptotic cells during embryonic development, *Cell* 128 (2007) 931–946.
- [124] E. Bergamini, G. Cavallini, A. Donati, Z. Gori, The role of autophagy in aging: its essential part in the anti-aging mechanism of caloric restriction, *Ann. N. Y. Acad. Sci.* 1114 (2007) 69–78.
- [125] E. Bergamini, G. Cavallini, A. Donati, Z. Gori, The anti-ageing effects of caloric restriction may involve stimulation of macroautophagy and lysosomal degradation, and can be intensified pharmacologically, *Biomed. Pharmacother.* 57 (2003) 203–208.
- [126] A. Meléndez, Z. Tallóczy, M. Seaman, E.L. Eskelinen, D.H. Hall, B. Levine, Autophagy genes are essential for dauer development and lifespan extension in *C. elegans*, *Science* 301 (2003) 1387–1391.
- [127] E.S. Hars, H. Qi, A.G. Ryazanov, S. Jin, L. Cai, C. Hu, L.F. Liu, Autophagy regulates ageing in *C. elegans*, *Autophagy* 3 (2007) 93–95.
- [128] A. Simonsen, R.C. Cumming, A. Brech, P. Isakson, D.R. Schubert, K.D. Finley, Promoting basal levels of autophagy in the nervous system enhances longevity and oxidant resistance in adult *Drosophila*, *Autophagy* 4 (2008) 176–184.
- [129] S. Bialik, A. Kimchi, Autophagy and tumor suppression: recent advances in understanding the link between autophagic cell death pathways and tumor development, *Adv. Exp. Med. Biol.* 615 (2008) 177–200.
- [130] B. Levine, G. Kroemer, Autophagy in the pathogenesis of disease, *Cell* 132 (2008) 27–42.
- [131] X.H. Liang, S. Jackson, M. Seaman, K. Brown, B. Kempkes, H. Hibshoosh, B. Levine, Induction of autophagy and inhibition of tumorigenesis by beclin 1, *Nature* 402 (1999) 672–676.
- [132] X. Qu, J. Yu, G. Bhagat, N. Furuya, H. Hibshoosh, A. Troxel, J. Rosen, E.L. Eskelinen, N. Mizushima, Y. Ohsumi, G. Cattoretti, B. Levine, Promotion of tumorigenesis by heterozygous disruption of the beclin 1 autophagy gene, *J. Clin. Invest.* 112 (2003) 1809–1820.
- [133] Z. Yue, S. Jin, C. Yang, A.J. Levine, N. Heintz, Beclin 1, an autophagy gene essential for early embryonic development, is a haploinsufficient tumor suppressor, *Proc. Natl. Acad. Sci. U. S. A.* 100 (2003) 15077–15082.
- [134] J. Li, C. Yen, D. Liaw, K. Podsypanina, S. Bose, S.I. Wang, J. Puc, C. Miliareis, L. Rodgers, R. McCombie, S.H. Bigner, B.C. Giovanella, M. Ittmann, B. Tycko, H. Hibshoosh, M.H. Wigler, R. Parsons, PTEN, a putative protein tyrosine phosphatase gene mutated in human brain, breast, and prostate cancer, *Science* 275 (1997) 1943–1947.
- [135] D. Stokoe, The phosphoinositide 3-kinase pathway and cancer, *Expert. Rev. Mol. Med.* 7 (2005) 1–22.
- [136] B.S. Braun, K. Shannon, Targeting Ras in myeloid leukemias, *Clin. Cancer Res.* 14 (2008) 2249–2252.
- [137] R. Mathew, S. Kongara, B. Beaudoin, C.M. Karp, K. Bray, K. Degenhardt, G. Chen, S. Jin, E. White, Autophagy suppresses tumor progression by limiting chromosomal instability, *Genes Dev.* 21 (2007) 1367–1381.
- [138] M.C. Maiuri, E. Zalckvar, A. Kimchi, G. Kroemer, Self-eating and self-killing: crosstalk between autophagy and apoptosis, *Nat. Rev. Mol. Cell Biol.* 8 (2007) 741–752.
- [139] E. Tasdemir, M.C. Maiuri, L. Galluzzi, I. Vitale, M. Djavaheri-Mergny, M. D'Amelio, A. Criollo, E. Morselli, C. Zhu, F. Harper, U. Nannmark, C. Samara, P. Pinton, J.M. Vicencio, R. Carnuccio, U.M. Moll, F. Madeo, P. Paterlini-Brechot, R. Rizzuto, G. Szabadkai, G. Pierron, K. Blomgren, N. Tavernarakis, P. Codogno, F. Cecconi, G. Kroemer, Regulation of autophagy by cytoplasmic p53, *Nat. Cell Biol.* 10 (2008) 676–687.
- [140] E.S. Wong, J.M. Tan, W.E. Soong, K. Hussein, N. Nukina, V.L. Dawson, T.M. Dawson, A.M. Cuervo and K.L. Lim, Autophagy-mediated clearance of aggregates is not a universal phenomenon, *Hum. Mol. Genet.* in press (2008).
- [141] S. Sarkar, E.O. Perlstein, S. Imarisio, S. Pineau, A. Cordenier, R.L. Maglathlin, J.A. Webster, T.A. Lewis, C.J. O'Kane, S.L. Schreiber, D.C. Rubinsztein, Small molecules enhance autophagy and reduce toxicity in Huntington's disease models, *Nat. Chem. Biol.* 3 (2007) 331–338.
- [142] W.H. Yu, A.M. Cuervo, A. Kumar, C.M. Peterhoff, S.D. Schmidt, J.H. Lee, P.S. Mohan, M. Mercken, M.R. Farmery, L.O. Tjernberg, Y. Jiang, K. Duff, Y. Uchiyama, J. Naslund, P.M. Mathews, A.M. Cataldo, R.A. Nixon, Macroautophagy – a novel b-amyloid peptide-generating pathway activated in Alzheimer's disease, *J. Cell Biol.* 171 (2005) 87–98.
- [143] W.H. Yu, A. Kumar, C. Peterhoff, L. Shapiro Kulnane, Y. Uchiyama, B.T. Lamb, A.M. Cuervo, R.A. Nixon, Autophagic vacuoles are enriched in amyloid precursor protein-secreting activities: implications for b-amyloid peptide over-production and localization in Alzheimer's disease, *Int. J. Biochem. Cell Biol.* 36 (2004) 2531–2540.
- [144] B. Boland, A. Kumar, S. Lee, F.M. Platt, J. Wegiel, W.H. Yu, R.A. Nixon, Autophagy induction and autophagosome clearance in neurons: relationship to autophagic pathology in Alzheimer's disease, *J. Neurosci.* 28 (2008) 6926–6937.
- [145] F. Pickford, E. Masliah, M. Britschgi, K. Lucin, R. Narasimhan, P.A. Jaeger, S. Small, B. Spencer, E. Rockenstein, B. Levine, T. Wyss-Coray, The autophagy-related protein beclin 1 shows reduced expression in early Alzheimer disease and regulates amyloid b accumulation in mice, *J. Clin. Invest.* 118 (2008) 2190–2199.
- [146] C.D. Pacheco, R. Kunkel, A.P. Lieberman, Autophagy in Niemann–Pick C disease is dependent upon Beclin-1 and responsive to lipid trafficking defects, *Hum. Mol. Genet.* 16 (2007) 1495–1503.
- [147] G. Liao, Y. Yao, J. Liu, Z. Yu, S. Cheung, A. Xie, X. Liang, X. Bi, Cholesterol accumulation is associated with lysosomal dysfunction and autophagic stress in Npc1^{−/−} mouse brain, *Am. J. Pathol.* 171 (2007) 962–975.
- [148] D.C. Ko, L. Milenkovic, S.M. Beier, H. Manuel, J. Buchanan, M.P. Scott, Cell-autonomous death of cerebellar purkinje neurons with autophagy in Niemann–Pick type C disease, *PLoS Genet.* 1 (2005) 81–95.
- [149] C. Settembre, A. Fraldi, L. Jahreis, C. Spampinato, C. Venturi, D. Medina, R. de Pablo, C. Tacchetti, D.C. Rubinsztein, A. Ballabio, A block of autophagy in lysosomal storage disorders, *Hum. Mol. Genet.* 17 (2008) 119–129.
- [150] F. Muntoni, G. Catani, A. Matteddu, M. Rimoldi, T. Congiu, G. Faa, M.G. Marrosu, C. Cianchetti, M. Porcu, Familial cardiomyopathy, mental retardation and myopathy associated with desmin-type intermediate filaments, *Neuromuscul. Disord.* 4 (1994) 233–241.
- [151] J. Stypmann, P.M. Janssen, J. Prestle, M.A. Engelen, H. Kogler, R. Lullmann-Rauch, L. Eckardt, K. von Figura, J. Landgrebe, A. Mleczko, P. Saftig, LAMP-2 deficient mice show depressed cardiac contractile function without significant changes in calcium handling, *Basic Res. Cardiol.* 101 (2006) 281–291.
- [152] E.L. Eskelinen, A.L. Illert, Y. Tanaka, J. Blanz, K. von Figura, P. Saftig, Role of LAMP-2 in lysosome biogenesis and autophagy, *Mol. Biol. Cell.* 13 (2002) 3355–3368.
- [153] J. Bolanos-Meade, L. Zhou, A. Hoke, A. Corse, G. Vogelsang, K.R. Wagner, Hydroxychloroquine causes severe vacuolar myopathy in a patient with chronic graft-versus-host disease, *Am. J. Hematol.* 78 (2005) 306–309.
- [154] I. Nishino, Autophagic vacuolar myopathy, *Semin. Pediatr. Neurol.* 13 (2006) 90–95.
- [155] A. Orvedahl, D. Alexander, Z. Tallóczy, Q. Sun, Y. Wei, W. Zhang, D. Burns, D.A. Leib, B. Levine, HSV-1 ICP34.5 confers neurovirulence by targeting the Beclin 1 autophagy protein, *Cell Host Microbe* 1 (2007) 23–35.
- [156] M.A. Sanjuan, C.P. Dillon, S.W. Tait, S. Moshiah, F. Dorsey, S. Connell, M. Komatsu, K. Tanaka, J.L. Cleveland, S. Withoff, D.R. Green, Toll-like receptor signalling in

- macrophages links the autophagy pathway to phagocytosis, *Nature* 450 (2007) 1253–1257.
- [157] M.A. Delgado, R.A. Elmaoued, A.S. Davis, G. Kyei, V. Deretic, Toll-like receptors control autophagy, *EMBO J.* 27 (2008) 1110–1121.
- [158] K.K. Huynh, E.L. Eskelinen, C.C. Scott, A. Malevanets, P. Saftig, S. Grinstein, LAMP proteins are required for fusion of lysosomes with phagosomes, *EMBO J.* 26 (2007) 313–324.
- [159] M.G. Binker, L.I. Cosen-Binker, M.R. Terebiznik, G.V. Mallo, S.E. McCaw, E.L. Eskelinen, M. Willenborg, J.H. Brumell, P. Saftig, S. Grinstein, S.D. Gray-Owen, Arrested maturation of Neisseria-containing phagosomes in the absence of the lysosome-associated membrane proteins, LAMP-1 and LAMP-2, *Cell Microbiol.* 9 (2007) 2153–2166.
- [160] W. Beertsen, M. Willenborg, V. Everts, A. Zirogianni, E.L. Eskelinen, P. Saftig, Impaired phagosomal maturation in neutrophils leads to periodontitis in Lysosomal Associated Membrane Protein-2 (LAMP-2) knockout mice, *J. Immunol.* 80 (2008) 475–482.
- [161] P. Saftig, W. Beertsen, E.L. Eskelinen, LAMP-2: a control step for phagosome and autophagosome maturation, *Autophagy* 4 (2008) 510–512.