



International Symposium on Robotics and Intelligent Sensors 2012 (IRIS 2012)

## The Effect of Flux Core Arc Welding (FCAW) processes on different parameters

Syarul Asraf Mohamat<sup>a\*</sup>, Izatul Aini Ibrahim<sup>a</sup>, Amalina Amir<sup>a</sup>, Abdul Ghalib<sup>a</sup>

<sup>a</sup>Universiti Teknologi Mara (UiTM), Faculty of Mechanical Engineering, 40450 Selangor

---

### Abstract

Flux Core Arc Welding (FCAW) is an arc welding process that using continuous flux-cored filler wire. The flux is used as a welding protection from the atmosphere environment. This project is study about the effect of FCAW process on different parameters by using robotic welding with the variables in welding current, speed and arc voltage. The effects are on welding penetration, microstructural and hardness measurement. Mild steel with 6mm thickness is used in this study as a base metal. For all experiments, the welding currents were chosen are 90A, 150A and 210A and the arc voltage is 22V, 26V and 30V respectively. 20, 40 and 60 cm/min were chosen for the welding speed. The effect will studied and measured on the penetration, microstructure and hardness for all specimens after FCAW process. From the study, the result shown increasing welding current will influenced the value depth of penetration increased. Other than that, the factors that can influence the value of depth of penetration are arc voltage and welding speed.

© 2012 The Authors. Published by Elsevier Ltd. Selection and/or peer-review under responsibility of the Centre of Humanoid Robots and Bio-Sensor (HuRoBs), Faculty of Mechanical Engineering, Universiti Teknologi MARA.  
Open access under [CC BY-NC-ND license](https://creativecommons.org/licenses/by-nc-nd/4.0/).

*Keywords:* Depth of penetration, Hardness, Welding speed, Microstructure, Robotic welding

---

### 1. Introduction

In a welding world, Flux-Cored Arc Welding (FCAW) process commonly used in different industries to join the metals and alloys. It has a few numbers of benefits such as high deposition rates, more tolerant of rust and mill scale than GMAW, simpler and more adaptable than SAW, less operator skill required than GMAW, high productivity than SMAW and goo surface appearance [1]. For the repairs industry they are performed by used the manual metal arc welding (MMAW), however the flux cored arc welding (FCAW) process are more benefits and have been appreciated by the industry for many years [2].

The process parameters for FCAW should be well recognized and categorized to enable automation and robotization of arc welding. The selection of welding procedure must be specific to ensure the good quality in bead. To obtain the needed quality welds, it is important to have complete control over the relevant process parameters to obtain bead geometry and shape relationship of a weldment based [3].

The result from the study on relationship between process parameters, weld bead geometry and tensile properties in low carbon steel joints by robotic FCAW-G shown that the increase in arc voltage or welding current in FCAW-G decrease clearly the ultimate tensile strength and yield strength of weldment . When the welding speed increase, the weld strength also increase [4].

\*Corresponding author.

Email Address: [archilles\\_asraf88@yahoo.com](mailto:archilles_asraf88@yahoo.com) (Syarul Asraf Mohamat)

**2. Experimental**

For the base metal, the mild steel having the 100mm x 100mm x 6mm sizes were use for the experiment. The spectrometric analysis of the base metal was done by using Optical Emission Spectrometer Machine to obtain the chemical compositions of the metal were given in the Table 1.

FCAW operations were performed by the OTC Almega AII-B4 series articulated robot welding. 1.2mm diameter of electrode wire (K-71T AWS A5.20) were used, 100% of CO<sub>2</sub> was used as a shielding gas protected, , nozzle to work distance is 12mm, the torch angle is 5° and only one pass on the weld plate. The variables that choose in this study are arc voltage, welding current and welding speed. The arc voltage and welding current were chosen as 22, 26 and 30 V and 90, 150 and 210 A approximately. The welding speed was chosen as 20, 40 and 60 cm/min.

Table 1: The composition of the base metal used, wt (%)

Element	C	Si	Mn	P	S	Cr	Ni	Cu	Al
Wt (%)	0.204	0.231	0.65	0.0085	0.012	0.143	0.081	0.309	0.0024

After finished the welding process, the specimens will cut perpendicular to the welding direction by using a cut-off machine to cut the specimens, grinding and polished. Then, the specimens will etch using 2% or 10% nital for clearly the metal zone of welding. The depth of penetration will measured and microstructural will observed on the etched specimens by optical microscopy 10x magnification. Lastly, for the Vickers Hardness values for HAZ, the 1kg load applies up to 20 second on the specimens [4], [5], [6].



Figure 1. The OTC Almega AII-B4 articulated robot welding

**3. Result and discussion**

The 27 FCAW process on the base metals with the variables in welding parameters which are welding speed, arc voltage and current were complete and the microstructure observation, deep of penetration measured and hardness for all cases. As a result, the parameters will affect the penetration, microstructure and also hardness.

*3.1 The effect of welding current on penetration*

The effect of welding current on penetration was present in figure 2 below. The entire graph shows the penetration versus welding current on three various arc voltages with the constant welding speeds 20cm/min, 40cm/min and 60cm/min.

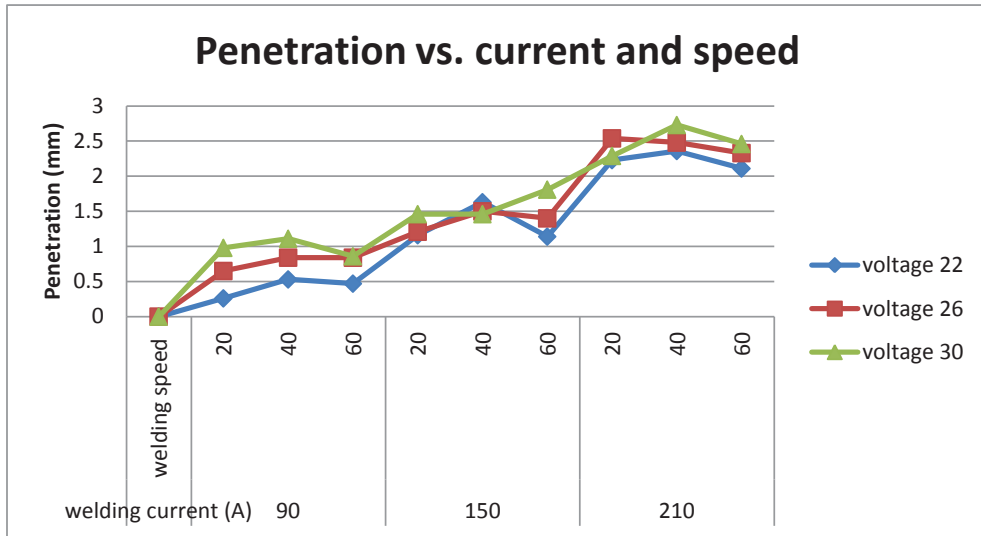


Figure 2. The effect of welding current to the penetration at different arc voltage on a) 20 cm/min welding speed, b) 40 cm/min welding speed and c) 60 cm/min welding speed

In figure 2, arc voltage as constant as 30V and the value of the penetration was increased by increasing the value of welding speed 20, 40 and 60 cm/min. The higher penetration is 2.732 mm at the welding speed 40cm/min, welding current 210A and arc voltage 30V. The lower penetration is 0.26mm at the welding speed 20cm/min, welding current 90 A and arc voltage 22V. From the figure, it showed clearly that the increasing the welding current from 90 to 210A will influence and increase the depth of penetration, at all arc voltages. The graph shows when the welding speeds and welding current increase will affect the penetration become increase.

### 3.2 Microstructural observation

These microstructural changes have been shown in figure 3. The changes in flux core arc welding parameters are influence the affect of the microstructure properties of weld metal. The increased parameters will affected to the grain size of microstructure.

The figure 3 below shown at the arc voltage 210 A, 30 V welding current and different value of welding speed 20 cm/min, 40 cm/min and 60 cm/min present the different phase of grain boundaries. At 20 cm/min, the large grain boundaries with 25.4micron have shown but at 40 cm/min, the grain boundaries (19.4micron) become smaller than 20 cm/min and at 60 cm/min it is smallest (16.9micron) and form more martensite than others.

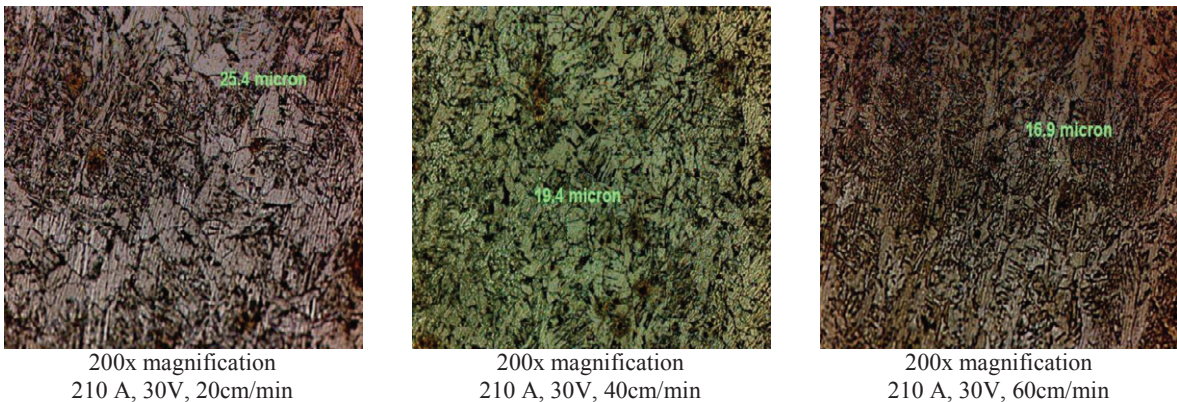


Figure 3: The microstructure observation on the weld metal

### 3.3 Vickers Hardness Test

The specimens will cut perpendicular to the welding direction by using abrasive cutter, grinding and polished with different grades of grits. Before going to the experiment, the specimen will etched using 2% natal clearly the metal zone of welding. The Vickers Hardness values for HAZ, the 1kg load applies up to 20 second on the specimens.

The hardness value are determined and performed at figure 4. Usually, the loses of originality strength for the material causes by the strain hardening effect in the fused zone during the solidification. For low carbon steel, the point of the fusion zone that content the formation of bainite or martensite phase and the hardness of material were increased [5].

The effect of welding current to the hardness was present in figure 4 below. The entire graph shows the hardness versus welding current on three various arc voltages with the constant welding speeds 20cm/min, 40cm/min and 60cm/min. The hardness decrease depends on when the welding current and arc voltage are increase.

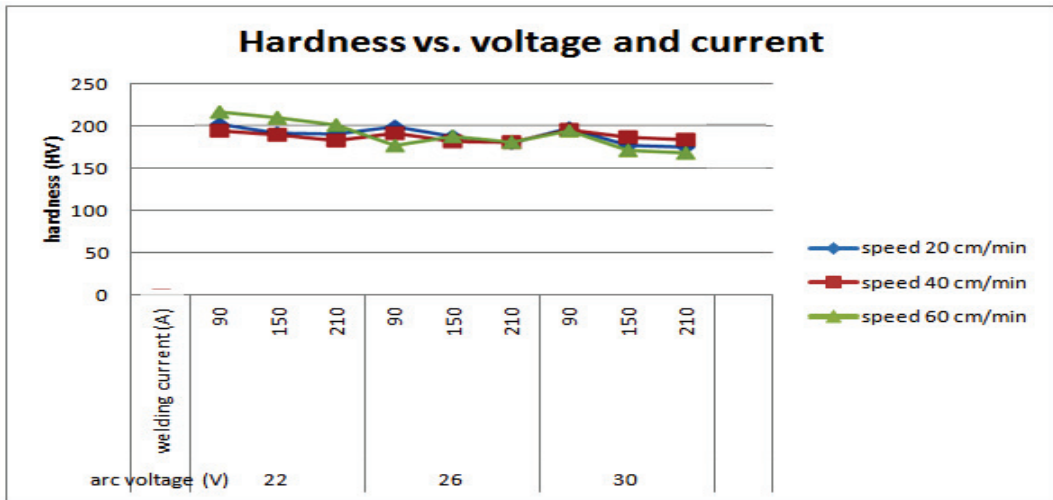


Figure 4. The effect of welding current to the hardness at different arc voltage on a) 20 cm/min welding speed, b) 40 cm/min welding speed and c) 60 cm/min welding speed

Figure 5 below shown that at the certain parameters the hardness value at weld bead metals are higher than the value of Heat Affected Zone (HAZ). The cooling method likes environment temperature influenced the hardness values in the HAZ zone. The hardness values for base metals are lower than weld bead and HAZ. The graph below shows the hardness value of weld bead is higher than HAZ.

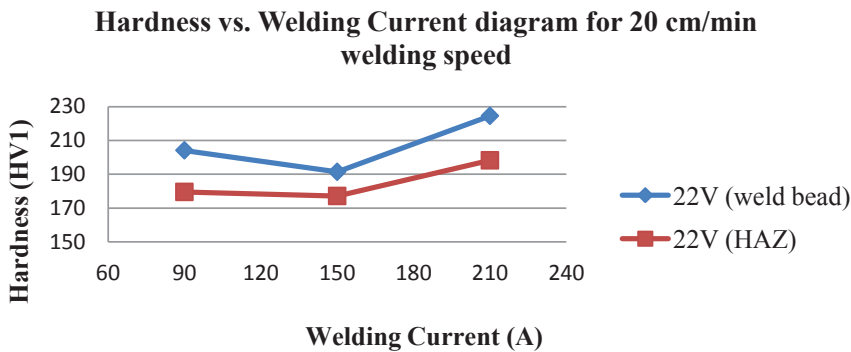


Figure 5. The graph of hardness versus welding current at 20cm/min welding speed (arc voltage 22V)

#### 4.0 Conclusion

Robot welding system are highly appropriate both to increase the production rate and quality as well as to reduce production time and cost for a desired product, due to that it have received a great deal of attention. The conclusion from this study;

- 1) The increased value of penetration by increasing the value of welding current from 90, 150 and 210 A. Welding current is a factor that influences the penetration. Arc voltage and welding speed also a factor that can influence the penetration. From the graph at the figure 2, the best value of the penetration from three various welding speed is 30V. It plotted the highest value of penetration compare than 22V and 26 V.
- 2) The sizes grain boundary of microstructure changes from bigger to smaller size when the welding speeds increase.
- 3) The hardness values for the weld metal are higher than HAZ in FCAW if the base metals are mild steel. The other effects will influence the values of hardness for the weld metals and HAZ. It shown in the several parameters has an HAZ value is higher than weld metals. The hardness will decrease when the arc voltage and welding current are increase because of the change of the sizes grain boundary of microstructure.

#### Acknowledgements

The authors submit their thanks to Faculty of Mechanical Engineering, UiTM Shah Alam, Selangor and also supervisor Amalina Amir and Abdul Ghalib for this research under Final Year Project.

#### References

- [1] T.Kannan and N.Murugan, Effect of Flux Cored Arc Welding Process Parameters on Duplex Stainless Steel Clad Quality, *Journal of Materials Processing technology* 176 (2006) 230-239.
- [2] A.Aloraier, R.Ibrahim, P.Thomson, FCAW process to avoid the use of post weld heat treatment, *International Journal of Pressure Vessels and Piping* 83 (2006) 394 -398
- [3] P.K. Palani, N.Murugan, Development of Mathematical Models for Prediction of Weld Bead Geometry in Cladding by Flux Cored Arc Welding, *International Journal Advanced Manufacturing Technology* (2006) 30: 669-676.
- [4] H.R. Ghazvinlo and A.Honarbaksh, Effect of Gas-Shielded Flux Cored Arc Welding Parameters on Weld Width and Tensile Properties of Weld Metal in a Low Carbon Steel, *Journal of Applied Science* 10 (8): 658-663, 2010.
- [5] P.Sathiya, S.Aravinda, P.M. Ajith, B.Arivazhagan and A.Noorul Haq, Microstructural Characteristics on Bead on Plate Welding of AISI 904 L Super Austenitic Stainless Steel Using Gas Metal Arc Welding Process, *Engineering, Science and Technology*, Vol.2, No.6, 2010, pp. 189-199.
- [6] Erdal Karadeniz, Ugur Ozsarac and Ceyhan Yildiz, The Effect of Process Parameters on Penetration in Gas Metal Arc Welding Processes, *Material and Design* 28 (2007) 649-656.