

From the Department of Medical Biochemistry and Biophysics  
Karolinska Institutet, Stockholm, Sweden

**VASCULAR ENDOTHELIAL GROWTH FACTOR B -  
ROLE IN METABOLISM, LIPOTOXICITY AND DISEASE**

*Annika Mehlem*



**Karolinska  
Institutet**

Stockholm 2016

All previously published papers were reproduced with permission from the publisher.

Published by Karolinska Institutet.

Printed by E-Print AB 2015

© Annika Mehlem, 2016

ISBN 978-91-7676-181-6

# VASCULAR ENDOTHELIAL GROWTH FACTOR B - ROLE IN METABOLISM, LIPOTOXICITY AND DISEASE

## THESIS FOR DOCTORAL DEGREE (Ph.D.)

By

**Annika Mehlem**

*Principal Supervisor:*

Ulf Eriksson  
Karolinska Institutet  
Department of Medical Biochemistry and  
Biophysics  
Division of Vascular Biology

*Co-supervisor(s):*

Annelie Falkevall  
Karolinska Institutet  
Department of Medical Biochemistry and  
Biophysics  
Division of Division of Vascular Biology

*Opponent:*

Professor Richard Coward  
University of Bristol  
CardioVascular Unit

*Examination Board:*

Professor Lars Holmgren  
Karolinska institutet  
Department of Oncology-Pathology

Professor Per-Henrik Groop  
University of Helsinki  
Department of Nephrology

Professor Jan Nedergaard  
Stockholm University  
Department of Molecular Biosciences

# POPULÄRVETENSKAPLIG SAMMANFATTNING

Vascular Endothelial Growth Factor B (VEGF-B) är ett tillväxtprotein som styr mängden fett som transporteras genom blodkärlsväggen till celler, till exempel muskelceller. Genom att genmanipulera möss kan mängden VEGF-B minskas, vilket reducerar den mängd fett som transporteras igenom blodkärlsväggen och in i cellen.

I **delarbete I**, undersöker vi hur VEGF-B regleras. Vi kan visa, både genom analyser i celler och i möss, att mängden VEGF-B styrs av ett protein känt som peroxisome proliferator-activated receptor  $\gamma$  coactivator 1 $\alpha$  (PGC-1 $\alpha$ ). PGC-1 $\alpha$  reglerar också antalet mitokondrier som finns i cellen. I mitokondrierna används de fetter som cellen tar upp för att utvinna energi. Eftersom PGC-1 $\alpha$  också reglerar mängden VEGF-B, koordineras antalet mitokondrier med mängden fett som transporteras in i cellen, och därmed undviks sjuklig fettansamling.

Patienter med Typ 2 Diabetes (T2D) har mycket högre mängder fett i centrala organ såsom hjärta, muskler och lever, jämfört med friska individer. I **delarbete II** ville vi undersöka om det felplacerade fett kunde vara orsaken till att man utvecklar T2D. Vi kan i flera olika experimentella djurmodeller av T2D visa att om vi minskar mängden VEGF-B, genetiskt eller genom att använda en läkemedelskandidat, så reduceras även mängden fett i de centrala organen. Detta leder till att de djurmodeller som har mindre VEGF-B har en förbättrad sjukdomsutveckling. Därför skulle en läkemedelskandidat mot VEGF-B kunna erbjuda en lovande behandling för patienter med T2D.

Diabetes är kopplat till ett flertal följsjukdomar och diabetisk njursjukdom, även kallat diabetisk nefropati (DN), är en av dessa. I patienter med DN, har man kunnat observera höga mängder fett i njurarna. Vi ville därför i **delarbete III** studera om man genom att minska mängden fett i njurarna, genom att reducera mängden VEGF-B, kunde hindra eller förbättra sjukdomsutvecklingen. I flera musmodeller av DN kan vi visa att fett ansamlas i njurarna. Om man minskar mängden VEGF-B är fettansamlingen i njurarna kraftigt reducerat och dessa möss har även en mildare sjukdomsutveckling samt en bättre njurfunktion. Vidare visar vi även att patienter med DN har högre mängder VEGF-B i njurarna än friska individer. Att reducera mängden fett i njurarna, via VEGF-B antagonism, skulle därför kunna vara en möjlig behandling mot DN.

Slutligen, i **delarbete IV**, har vi optimerat en metod som gör att man kan mäta mängden fett som finns i vävnaden. Denna metod har möjliggjort en noggrann kvantifiering av hur mycket fett som finns inlagrat, och har därför varit ovärderlig för samtliga delarbeten som diskuterats ovan.

I denna avhandling föreslår vi sammanfattningsvis att en ökad inlagring av fett i centrala organ som muskel, hjärta och njure kan leda till T2D och DN. Genom att minska mängden VEGF-B, och därigenom fettansamlingen, kan vi bromsa utvecklingen av båda sjukdomarna. Därför anser vi att reduktion av mängden fett via minskad VEGF-B signalering, skulle kunna vara en ny lovande behandlingsmetod för patienter med T2D och DN.

## ABSTRACT

Vascular Endothelial Growth Factor B (VEGF-B) was previously shown to control lipid uptake from the bloodstream via the endothelium into tissue cells, and when ablating *Vegfb*, intra-tissue lipid accumulation was reduced. However, very little is known regarding the metabolic role of VEGF-B in physiologic, or pathophysiologic conditions.

In **paper I**, we characterized the upstream regulatory mechanism controlling VEGF-B expression. We showed *in vitro* and *in vivo* that peroxisome proliferator-activated receptor  $\gamma$  coactivator 1 $\alpha$  (PGC-1 $\alpha$ ), a major regulator of mitochondrial biogenesis, controls the expression of VEGF-B. The tight regulation of VEGF-B via PGC-1 $\alpha$  enables the coordination of lipid uptake with mitochondrial biogenesis and  $\beta$ -oxidation, and hence the prevention of lipotoxicity.

Lipotoxicity and insulin resistance are suggested as key pathologies in type 2 diabetes (T2D). In **paper II** we analysed the effects of reduced VEGF-B signalling on lipotoxicity and disease progression in different rodent models of T2D. VEGF-B signalling was reduced by either genetic, or pharmaceutical means, and this reduced lipotoxicity, increased glucose uptake into peripheral tissues, improved dyslipidaemia and enhanced sensitivity to insulin, in rodent models of T2D. Therefore, targeting VEGF-B signalling is a promising therapeutic method for the treatment of T2D.

Lipotoxicity has also lately been attributed a larger role in the pathogenesis of diabetic nephropathy (DN), a comorbidity of both type 1 diabetes (T1D) and T2D. Therefore, in **paper III**, we investigated the effects of reducing VEGF-B signalling in mouse models of DN. We showed that renal lipotoxicity was an important element of DN in these models, and by reducing VEGF-B signalling renal lipotoxicity was ameliorated. Also, renal function, morphology and the filtration capacity were enhanced. Furthermore, VEGF-B signalling was present and activated in patients with DN in comparison to healthy individuals. Thus, targeting VEGF-B signalling represents a novel therapeutic approach for DN.

Finally, in **paper IV**, a protocol for detecting and imaging of intra-tissue neutral lipids is presented. This protocol enables the exact quantification of neutral lipids and was crucial for all papers discussed above.

To conclude, our data show that lipotoxicity is a major driving force for the development and progression of T2D and DN. Hence, VEGF-B could be a novel target for the treatment of both T2D and DN.

# LIST OF SCIENTIFIC PAPERS

This thesis is based on the following papers, which will be referred to in the text by their roman numerals

- I. PGC-1 $\alpha$  coordinates mitochondrial respiratory capacity and muscular fatty acid uptake via regulation of VEGF-B  
**Annika Mehlem**, Isolde Palombo, Xun Wang, Carolina E Hagberg, Ulf Eriksson and Annelie Falkevall  
Submitted manuscript
  
- II. Targeting VEGF-B as a novel treatment for insulin resistance and type 2 diabetes  
Hagberg CE\*, **Mehlem A\***, Falkevall A, Muhl L, Fam BC, Ortsäter H, Scotney P, Nyqvist D, Samén E, Lu L, Stone-Elander S, Proietto J, Andrikopoulos S, Sjöholm A, Nash A, Eriksson U.  
Nature. 2012 **490**:426-30  
*\*These authors contributed equally to this work*  
  
Reducing VEGF-B signalling ameliorates renal lipotoxicity and protects against diabetic nephropathy  
Annelie Falkevall\*, **Annika Mehlem\***, Isolde Palombo, Benjamin Heller-Sahlgren, Lwaki Ebarasi, Liqun He, Jimmy Ytterberg, Jaakko Patrakka, Pierre Scotney, Andrew Nash and Ulf Eriksson  
Submitted manuscript  
*\*These authors contributed equally to this work*
  
- III. Imaging of neutral lipids by oil red O for analyzing the metabolic status in health and disease.  
**Mehlem A**, Hagberg CE, Muhl L, Eriksson U, Falkevall A.  
Nature Protocols. 2013 **6**:1149-54

## Additional publications not discussed within this thesis

Gpr116 Receptor Regulates Distinctive Functions in Pneumocytes and Vascular Endothelium.

Niaudet C, Hofmann JJ, Mäe MA, Jung B, Gaengel K, Vanlandewijck M, Ekvärn E, Salvado MD, **Mehlem A**, Al Sayegh S, He L, Lebouvier T, Castro-Freire M, Katayama K, Hultenby K, Moessinger C, Tannenbergs P, Cunha S, Pietras K, Laviña B, Hong J, Berg T, Betsholtz C.  
PLoS One. 2015 **9**:e0137949

Endothelial fatty acid transport: role of vascular endothelial growth factor B.

Hagberg C\*, **Mehlem A\***, Falkevall A, Muhl L, Eriksson U.  
Physiology (Bethesda). 2013 **2**:125-34 Review.

EGF-R regulates MMP function in fibroblasts through MAPK and AP-1 pathways.

Kajanne R, Miettinen P, **Mehlem A**, Leivonen SK, Birrer M, Foschi M, Kähäri VM, Leppä S.  
J Cell Physiol. 2007 **2**:489-97.

# TABLE OF CONTENTS

<b>1</b>	<b>Introduction</b> .....	<b>1</b>
<b>1.1</b>	<b>Diabetes</b> .....	<b>1</b>
1.1.1	Type 2 Diabetes .....	1
1.1.1.1	Mechanisms of insulin resistance .....	3
1.1.1.1.1	Glucotoxicity .....	3
1.1.1.1.2	Lipotoxicity .....	4
1.1.2	Type 1 Diabetes .....	5
<b>1.2</b>	<b>Diabetic Nephropathy</b> .....	<b>7</b>
1.2.1	Kidney anatomy and function.....	7
1.2.1.1	Renal corpuscle .....	7
1.2.1.2	Renal tubule .....	8
1.2.2	Pathology of diabetic nephropathy .....	9
1.2.2.1	Mechanisms underlying DN .....	10
<b>1.3</b>	<b>Endothelial Lipid uptake</b> .....	<b>12</b>
1.3.1	Lipid transport and lipid transporters .....	12
1.3.2	VEGF-B signalling .....	12
1.3.2.1	VEGFR1 and NRP1, receptors of VEGF-B .....	13
1.3.2.2	The biological function of VEGF-B .....	14
1.3.3	PGC-1 $\alpha$ , master regulator of mitochondrial biogenesis.....	15
1.3.3.1	Linking PGC-1 $\alpha$ to angiogenesis and lipid uptake .....	16
<b>2</b>	<b>Aims of this thesis</b> .....	<b>19</b>
<b>3</b>	<b>Papers and discussion</b> .....	<b>21</b>
<b>3.1</b>	<b>Paper I; PGC-1 alpha coordinates mitochondrial respiratory capacity and muscular fatty acid uptake via regulation of VEGF-B</b> .....	<b>21</b>
<b>3.2</b>	<b>Paper II; Targeting VEGF-B as a novel treatment for insulin resistance and type 2 diabetes</b> .....	<b>22</b>
<b>3.3</b>	<b>Paper III; Reducing VEGF-B signalling ameliorates renal lipotoxicity and protects against diabetic nephropathy</b> .....	<b>24</b>
<b>3.4</b>	<b>Paper IV; Imaging of neutral lipids by oil red O for analyzing the metabolic status in health and disease</b> .....	<b>25</b>
<b>4</b>	<b>Future perspectives</b> .....	<b>27</b>
<b>5</b>	<b>Acknowledgements</b> .....	<b>29</b>
<b>6</b>	<b>References</b> .....	<b>31</b>

# LIST OF ABBREVIATIONS

AGEs	Advanced Glycation End-products
AS160/ TBC1D4	TBC1 domain family, member 4
AT	Adipose Tissue
CD2AP	CD2-associated protein
DN	Diabetic Nephropathy
EC(s)	Endothelial Cell(s)
eNOS	Endothelial Nitric Oxide Synthase
ER	Endoplasmic Reticulum
ESRD	End-Stage Renal Disease
ESRR $\alpha$	Estrogen-related Receptor alpha
FATP3/4	Solute carrier family 27 (fatty acid transporter), member 3/4
GBM	Glomerular Basement Membrane
GFB	Glomerular Filtration Barrier
GLUT4	Glucose Transporter 4
GME	Glomerular Mesangial Expansion
HFD	High-Fat Diet
IMCL	Intramyocellular Lipid
IRS	Insulin Receptor Substrate
LD(s)	Lipid Droplet(s)
(LC)FA(s)	(Long Chain) Fatty Acid(s)
MAPK	Mitogen-activated protein kinases
NRF1	Nuclear Respiratory Factor 1
NRP11	Neurophilin 1
ORO	Oil-Red O
PDK1	3-phosphoinositide dependent protein kinase-1
PI3K	Phosphatidylinositol-4,5-bisphosphate 3-kinase
PIP2	Phosphatidylinositol 4,5-bisphosphate
PIP3	Phosphatidylinositol (3,4,5)-trisphosphate
PKB/Akt	Protein kinase B
PKC	Protein kinase C
PIGF	Placental Growth Factor
PPAR $\gamma$ /a	Peroxisome Proliferator-activated Receptor gamma/alpha
Ppargc1a / PGC-1 $\alpha$	Peroxisome Proliferator-activated Receptor $\gamma$ Coactivator 1 $\alpha$
RAAS	Renin-Angiotensin-Aldosterone System
ROS	Reactive Oxygen Species
STZ	Streptozotocin
T1D	Type 1 Diabetes
T2D	Type 2 Diabetes
TG(s)	Triglyceride(s)
TGF- $\beta$	Transforming Growth Factor $\beta$
TNF- $\alpha$	Tumour Necrosis Factor alpha
UPR	Unfolded Protein Response
VEGF(R)	Vascular Endothelial Growth Factor (Receptors)
WT	Wild-Type



# 1 INTRODUCTION

Diabetes mellitus is a disease characterized by elevated blood sugar levels, referred to as hyperglycaemia. There are two major types of diabetes, type 1 and type 2 diabetes (T1D and T2D). Today, 387 million individuals are estimated to live with diabetes, although the prevalence is expected to increase with an additional 205 million diabetic individuals by 2035<sup>1</sup>. Diabetes is no longer a Western disease as, 77% of diabetic individuals today live in low- or middle-income countries<sup>1</sup>. Both types of diabetes increase the risk of long-term complications such as, cardiovascular disease, stroke, diabetic nephropathy (DN), diabetic retinopathy, diabetic foot ulcers, cancer and cognitive defects. Therefore, to find new therapeutic targets to treat these complications is of vital importance. In this thesis, we show that vascular endothelial growth factor B (VEGF-B) could be a target for the treatment of diabetes and DN. By reducing the signalling of VEGF-B, ectopic uptake of lipids into tissues was decreased. We also elucidate the regulation of VEGF-B expression via peroxisome proliferator-activated receptor  $\gamma$  coactivator 1 $\alpha$  (*Ppargc1a* / PGC-1 $\alpha$ ). This introductory part aims to give a general overview of T2D, T1D and DN and the underlying mechanisms of these diseases. Also, a brief summary of the current research regarding VEGF-B and PGC-1 $\alpha$  will be presented.

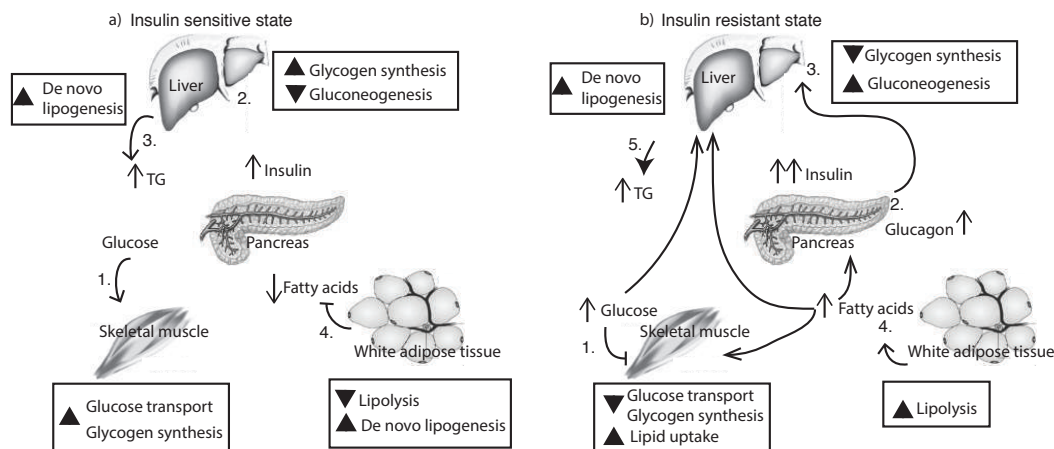
## 1.1 DIABETES

### 1.1.1 Type 2 Diabetes

Ninety per cent of all subjects with diabetes suffer from the insulin-independent T2D. Major risk factors of the disease include genetic predisposition, obesity, high caloric diets, systemic hyperlipidaemia and physical inactivity. T2D is characterized by a state called insulin resistance, during which the cells of the body are not sensitive to insulin. Insulin signalling has numerous actions, all promoting the storage of dietary nutrients (Fig. 1a). In the insulin sensitive state, dietary glucose promotes insulin secretion from the pancreatic  $\beta$ -cells. In skeletal muscle, insulin increases glucose uptake via binding to the insulin receptor, which subsequently translocates glucose transporter 4 (GLUT4) to the plasma membrane (Fig. 2). In the liver, insulin promotes glycogen synthesis and *de novo* lipogenesis while gluconeogenesis is inhibited. In the adipose tissue (AT), insulin suppresses lipolysis and promotes lipogenesis (Fig. 1a)<sup>2</sup>.

In the insulin resistant state, many key actions of insulin are reversed with large consequences for whole body metabolic homeostasis (Fig. 1b). Insulin resistance reduces muscular glucose uptake and instead glucose accumulates in the bloodstream<sup>3</sup>. Hyperglycaemia is counteracted by an increase in the secretion of insulin from the pancreatic  $\beta$ -cells<sup>4,5</sup> and consequently islet hyperplasia develops<sup>4,6</sup>. In parallel, islet hyperplasia causes an increase in the production of glucagon from the pancreatic  $\alpha$ -cells. In the liver, this together with hepatic insulin resistance, results in elevated glucose production (gluconeogenesis) contributing to hyperglycaemia<sup>6</sup>. If this state is left untreated,  $\beta$ -cell exhaustion and apoptosis will develop and ultimately insulin production will be lost. Insulin resistance in the adipocytes results in lack of insulin-mediated

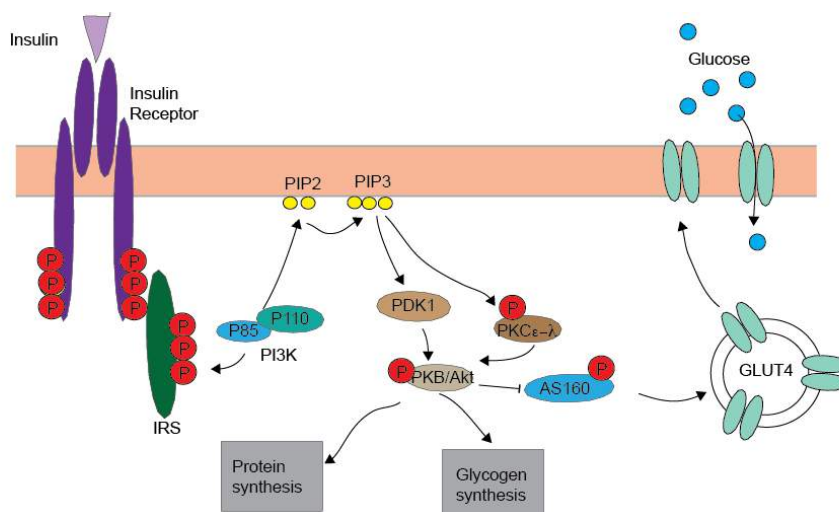
inhibition of lipolysis, thus fatty acids (FAs) are released and accumulate in peripheral tissues<sup>7,8</sup>. Atypical lipid accumulation is also promoted by increased *de novo* lipogenesis in the liver and by upregulation of muscular lipid uptake<sup>9,10</sup>.



**Fig 1. Schematic overview of key events in insulin sensitive and insulin resistant states**

**a):** In the insulin sensitive fed state, dietary glucose promotes insulin secretion that 1. increases muscular glucose uptake, 2. promotes glycogen synthesis and inhibits gluconeogenesis, 3. increases hepatic *de novo* lipogenesis, 4. suppresses lipolysis and promotes lipogenesis in AT. **b)** In the insulin resistant fed state 1. muscular glucose uptake is decreased 2. elevating both insulin and glucagon secretion. 3. Hepatic gluconeogenesis is elevated and glycogen synthesis is reduced and 4. lipolysis is increased in AT. GLUT4, glucose transporter 4, TG, triglycerides, AT; adipose tissue. Derived from<sup>11-14</sup>

Hence, as diabetes proceeds, glucose, lipid species, glucagon and insulin accumulate in the bloodstream. However, the exact order in which these events occur and their interconnected importance is still debated.



**Fig 2. Schematic overview of insulin signalling and glucose transport**

Insulin binds to the insulin receptor, leading to phosphorylation of IRS, that in turn recruits PI3K. The P110 subunit is activated, producing the lipid second messenger PIP3 from PIP2. PIP3 phosphorylates PH-domain containing proteins, PDK1, PKC $\zeta$ - $\lambda$  and PKB. PKB phosphorylation inhibits AS160, which relieves its inhibitory effect on GLUT4, triggering translocation to the plasma membrane. PKB phosphorylation also activates pathways involved in protein and glycogen synthesis.

MAPK; Mitogen-activated protein kinases, IRS; Insulin Receptor Substrate, PI3K; Phosphatidylinositol-4,5-bisphosphate 3-kinase PIP3; Phosphatidylinositol (3,4,5)-trisphosphate, PIP2; Phosphatidylinositol 4,5-bisphosphate, PDK1; 3-phosphoinositide dependent protein kinase-1, PKC; Protein kinase C, PKB; Protein kinase B, AS160/ TBC1D4; TBC1 domain family, member 4.

Traditionally, it has been assumed that insulin resistance primarily, and only, develops in cells with established functions in glucose handling, such as myocytes, adipocytes and hepatocytes<sup>4</sup>. However, data has shown that insulin resistance also develops in other cell types such as podocytes<sup>15</sup> and endothelial cells (ECs)<sup>7</sup>. Insulin resistance in ECs even precedes that in myocytes<sup>16,17,7</sup> which was supported by a study, where IRS2 was ablated specifically in ECs in mice. These mice displayed reduced muscular insulin delivery, capillary recruitment and insulin-induced endothelial nitric oxide synthase (eNOS) phosphorylation<sup>18</sup>.

#### *1.1.1.1 Mechanisms of insulin resistance*

Several different mechanisms underlying insulin resistance in T2D have been suggested, the two best studied are hyperglycaemia (glucotoxicity) and lipotoxicity.

##### *1.1.1.1.1 Glucotoxicity*

Hyperglycaemia impairs both the action of and the secretion of insulin, and has been regarded as the major pathology causing T2D. Today, most of the T2D drugs on the market act to reduce glucose levels by different molecular mechanisms. A vast amount of studies have been published regarding how the insulin signalling pathway is affected by hyperglycaemia, often focusing on how insulin release from the pancreatic islets is altered.

Chronic elevation of plasma glucose levels increased the generation of reactive oxygen species (ROS) that impaired both insulin secretion and action<sup>19</sup>. In line with this, levels of markers for oxidative stress were increased in pancreatic islets from T2D subjects compared to islets from non-diabetic subjects<sup>20</sup>. Moreover, the intracellular concentration of these oxidative stress markers was inversely correlated to glucose-stimulated insulin release from  $\beta$ -cells<sup>20,21</sup>. Glucotoxicity could also induce the activation of the unfolded protein response (UPR), also termed endoplasmic reticulum (ER) stress in pancreatic  $\beta$ -cells and in hepatocytes<sup>22,23</sup>. ER stress have been shown to contribute to the development of hepatic insulin resistance via activation of enzymes involved in gluconeogenesis, lipogenesis and kinases involved in the UPR pathway<sup>10</sup>. Furthermore, hyperglycaemia induced ER-stress in islets from T2D subjects, but not in islets from non-diabetic subjects<sup>22</sup>. Finally, chronic hyperglycaemia affected insulin secretion and insulin resistance by increasing flux through the hexose biosynthetic pathway<sup>24</sup> thus inactivating Akt2 mediated GLUT4 translocation<sup>25,26</sup>. However, a direct causal relationship between hexose biosynthetic pathway and insulin resistance has not yet been established<sup>27</sup>.

Large cohort studies have been conducted to explore whether intensive management of blood glucose levels using anti-diabetic agents, could reduce the risk for diabetes-related deaths and comorbidities. The ACCORD consortium study included 10,000 patients with T2D with an elevated risk for cardiovascular disease, and patients were randomly assigned to intensive therapy ( $HbA_{1c} \leq 6.0\%$ ), or standard therapy ( $HbA_{1c} 7.0-7.9\%$ ). Surprisingly in the intensive group in which blood glucose levels were normalized, no significant difference in the primary end points (nonfatal myocardial infarction, nonfatal stroke, or death from cardiovascular

causes) were detected. All-cause mortality was even 22% higher, in the intensive therapy group<sup>28</sup>. In a more recent ACCORD trial with a similar setup, an increased risk of cardiovascular events and mortality was found in younger participants in the intensive therapy group, whereas no effect was found in older participants<sup>29</sup>.

Taken together, even though the T2D agents available today are efficient in lowering blood glucose levels, even to normoglycaemic levels, they do not prevent diabetes-related complications. This implies that other mechanisms, perhaps more significant than glucotoxicity, may contribute to diabetes and its complications.

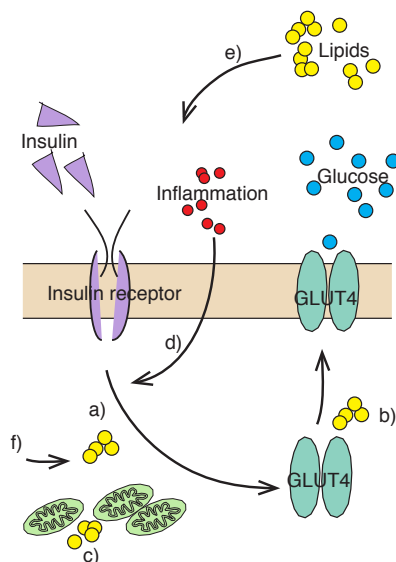
#### 1.1.1.1.2 Lipotoxicity

Considering that T2D typically develops in association with weight gain, prolonged physical inactivity, and/or systemic hyperlipidaemia, it is seemingly intuitive that insulin resistance might be driven by an excess of lipids. Indeed, research has provided a strong causative relationship between insulin resistance, organ dysfunction and atypical storage of neutral lipids in tissues such as liver, heart, pancreas, and skeletal muscle<sup>6,30-32</sup>. Lipids stored outside the adipose tissue are the most dangerous ones<sup>33,34</sup> and individuals with more abdominal obesity are more susceptible to metabolic syndrome<sup>35</sup> due to lipid overflow to other organs. High intramyocellular lipid (IMCL) content in both humans and rodents were associated with insulin resistance<sup>36,37</sup> and was a stronger predictor of insulin resistance than circulating FAs<sup>38</sup>. Infusing lipids into cardiac and skeletal muscle in healthy subjects induced insulin resistance<sup>39,40</sup>. In line with this, weight loss decreased IMCL content together with an improved insulin sensitivity<sup>41</sup>, and reversely, lipid infusion in combination with a high-fat diet (HFD) increased IMCL content and impaired insulin sensitivity in healthy subjects<sup>42</sup>.

Why do lipids accumulate in the peripheral tissues in diabetic patients? A common observation from diabetic rodent models is that atypical lipid accumulation and insulin resistance are linked to the absence of functional adipocytes<sup>34,43</sup>. Restriction of the adipocyte expansion capacity in *db/db* mice prevented obesity but instead increased cardiac and liver lipid accumulation rendering the animals diabetic<sup>34</sup>. In contrast, when overexpressing adiponectin in diabetic mice, thus increasing adipocyte number, the mice became overtly obese but still maintained normoglycaemia<sup>43</sup>. Also, lipodystrophy patients characterized by progressive loss of AT, generally display metabolic disorders such as insulin resistance, T2D and hyperlipidaemia<sup>44</sup>. Studies have indicated that subcutaneous AT is the largest and least metabolically harmful storage site of excess fat<sup>45</sup>. Atypical fat accumulation may therefore be due to a limited ability of this tissue to recruit new adipose cells and thus retain a bulk of the lipids that have been ingested<sup>46</sup>.

Several different lipid species have been shown to affect insulin signalling and/or insulin mediated glucose uptake in multiple organs (Fig. 2 and 3)<sup>32</sup>. Diacylglycerols from lipid droplets (LDs) activated PKC $\theta$  that altered the phosphorylation pattern of the IRS-1, leading to decreased insulin receptor signalling<sup>47</sup>. Ceramides, synthesised from esterification of FAs and sphingosines, can inactivate Akt2, consequently inhibiting the translocation of GLUT4

vesicles to the cell surface<sup>47-49</sup>. Impaired Akt2 activity also decreased insulin-mediated glycogen synthesis, which further contributed to the development of hyperglycaemia<sup>50</sup>. Obesity caused an inflammation in AT that may develop into a low-grade chronic inflammation in the whole body<sup>51</sup>. Increased expression of pro-inflammatory cytokines such as tumour necrosis factor alpha (TNF $\alpha$ ) have been detected in the AT in rodents and diabetic subjects with insulin resistance<sup>52,53</sup>. Increased TNF $\alpha$  signalling in AT promoted lipolysis via decreased expression of proteins stabilizing LD<sup>54,55</sup> causing lipid overload in peripheral tissues. Furthermore, elevated circulating levels of TNF $\alpha$  impaired insulin signalling via inactivation of IRS-1<sup>56</sup>. ER stress activated enzymes involved in *e.g.* lipogenesis<sup>10</sup> and altered cellular lipid balance in muscle and AT via accumulation of lipid intermediates, thus interfering with insulin signalling<sup>23</sup>. Finally, muscular mitochondrial content was lower in obese and T2D subjects<sup>57</sup>. Decreased  $\beta$ -oxidation would increase lipid accumulation and fuel the viscous cycle of lipotoxicity and impaired insulin signalling, but whether or not mitochondria have a causal role in insulin resistance is still debated.



**Fig 3. Overview of the mechanisms behind lipid-induced insulin resistance**

Lipid-induced insulin resistance can occur via; a) Inhibition of the insulin receptor substrate and intracellular insulin signalling b) Trapping vesicle fusion proteins preventing GLUT4 translocation c) Mitochondrial dysfunction as well as d) inflammatory responses and e) lipid spill-over from adipose tissue. f) ER-stress activates lipogenesis, contributing to high IMCL levels.

Taken together, several lipid-mediated mechanisms in various organs have been shown to contribute to the pathogenesis of insulin resistance and T2D (Fig 3).

### 1.1.2 Type 1 Diabetes

T1D stems from a deficiency of insulin production caused by a destruction of  $\beta$  cells as a result of an autoimmune attack (advanced type 1 diabetes) and usually manifests before 10 years of age. However, there is a notable heterogeneity of the disease and several other variants of insulin deficiency occur in patients with *e.g.* pancreatitis and some monogenic forms of diabetes<sup>58</sup>. Traditionally, T1D and T2D have been considered as two different diseases, however today the borderline between these two is not as clear. Experimental evidences from both human subjects and experimental animal models suggest, that insulin resistance may also be present in T1D<sup>59</sup>. For unclear reasons, there is a 4% annual increase in the prevalence of T1D in European children<sup>60,61</sup> but similar trends are observed

worldwide<sup>62,63</sup>. Children with both T1D and T2D, are increasingly more often observed in the clinic<sup>64</sup> as the rise in childhood obesity has resulted in elevated prevalence of T2D also in children<sup>65,66</sup>.

Despite adequate or even higher insulin availability, supplied by insulin therapy, lower whole-body insulin sensitivity was detected in T1D patients. Other hallmarks of T2D have been found in T1D patients such as reduced insulin-stimulated glucose clearance<sup>59</sup> and abnormal mitochondrial function<sup>67</sup>. At the molecular level, lower expression levels of the insulin receptor and GLUT4 were found in lean<sup>68</sup> and obese T1D patients<sup>69</sup>. Thus, insulin resistance does not only occur in T2D but also in T1D subjects and the overall metabolic consequences seem to be similar, although more studies on this topic are required.

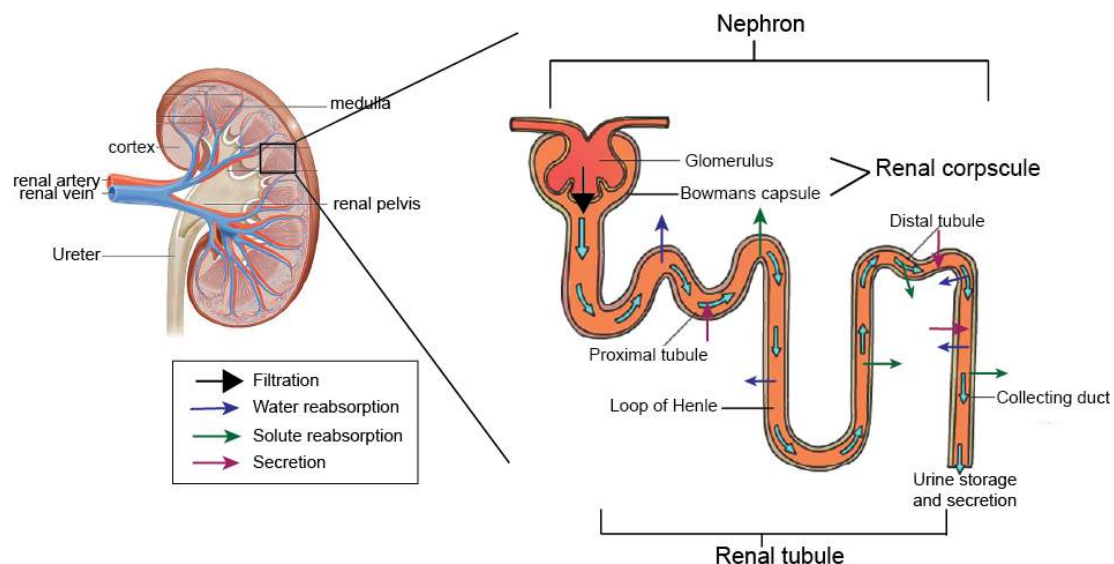
May lipotoxicity be the underlying mechanism of insulin resistance in T1D subjects as well, even though obesity is not a predictor, or a trait of the disease? Abnormal lipid accumulation in the liver<sup>70</sup> heart and muscle<sup>59</sup> has been observed in T1D subjects. Also, high IMCL content was associated with the development of insulin resistance in these patients<sup>59</sup>. Furthermore, T1D patients displayed adverse changes in HDL/chylomicron metabolism in response to multiple high-fat meals<sup>71</sup>. Additionally, insulin resistance was detected in AT in T1D patients<sup>69</sup> indicating an impaired insulin-mediated suppression of lipolysis<sup>72</sup>. T1D mice lacking perilipin 5 (Plin5-KO), an essential component that protects LDs from attack by lipases, did not exhibit excessive ROS generation or heart malfunction in contrast to T1D control mice. This was contributed to lower cardiac levels of diacylglycerol and ceramides detected in Plin5-KO compared to wild-type (WT) mice<sup>73</sup>. Hence, lipids may accumulate in liver and muscle also in T1D patients.

## 1.2 DIABETIC NEPHROPATHY

Currently, DN is the leading cause of chronic kidney disease and one of the major mechanisms underlying diabetes-related deaths. This section will cover the structure and function of the kidney, followed by a discussion of the pathological alterations occurring in DN.

### 1.2.1 Kidney anatomy and function

The kidney filters the blood by excreting waste products to the urine and allowing molecules that are to be re-used to re-enter into the bloodstream. Proper secretion and reabsorption ensures metabolic homeostasis and normal blood pressure. Blood that is to be filtered enters the kidney via the renal artery, and is then directed to smaller arterioles in the cortex, ultimately entering the nephrons, which are the filtration units of the kidney. The nephrons are composed of the renal corpuscle where the initial filtering occurs and the renal tubule specialized for reabsorptions and secretion. After passing through the renal tubule, the filtrated urine continues to the collecting duct system consisting of a series of tubules and ducts that finally connect the nephrons to the ureter (Fig 4)<sup>74,75</sup>.



**Fig 4. Schematic overview of the kidney and the morphology of the nephron**  
The outer and inner part of the kidney are called the cortex and the medulla. Derived from<sup>76</sup>

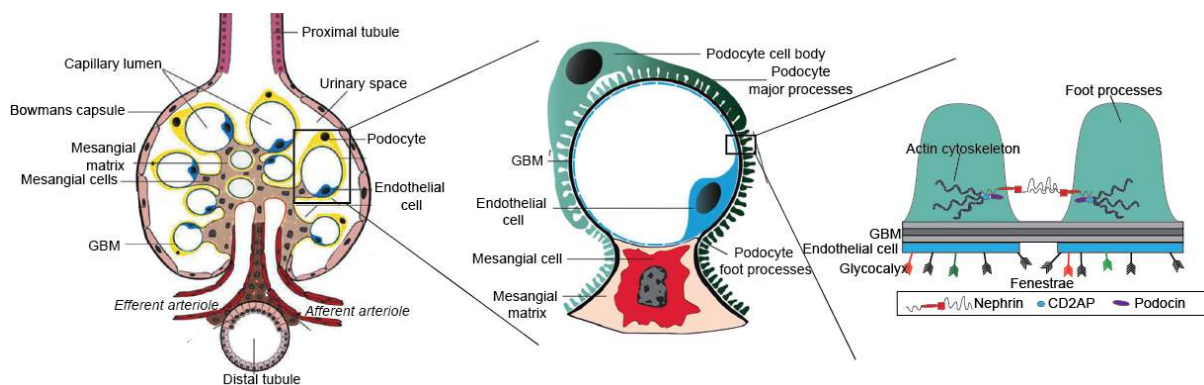
#### 1.2.1.1 Renal corpuscle

Renal corpuscles are situated in the beginning of the nephron and act as the initial filtering component. The renal corpuscle consists of the glomerulus and the surrounding Bowman's capsule. Both the nephron and Bowman's capsule contain several different cell types, which all in synchrony maintain a proper filtration barrier (Fig 4 and 5)<sup>74,75</sup>.

Blood enters the glomerular capillaries via the afferent arteriole where an initial filtration occurs. This capillary network is referred to as the glomerular filtration barrier (GFB). Blood that has been filtered exits the glomeruli via the efferent arteriole and after returning from the inner medulla returns to the renal vein and the general circulation. A hydrostatic pressure created by the afferent and efferent arteriole exists in the glomerular capillaries allowing the

ultrafiltration of metabolic waste products and other small molecules such as water, glucose, amino acids, urea and sodium. Larger molecules such as albumin, immunoglobulins and plasma transport proteins are largely retained in the blood. Molecules and waste products that have been filtered through the glomerular capillaries, depicted as the primary urine, end up in the space between the podocytes and the parietal epithelial cells that line the Bowmans capsule. Here is where the primary urine is collected before being led out to the renal tubule<sup>74,75</sup>.

In detail, GFB is composed of ECs, glomerular basement membrane (GBM) and podocytes (Fig 5). Renal ECs are fenestrated and would thus allow for free passing of fluid, plasma solutes and proteins, but trap red blood cells<sup>77</sup>. However, electron microscope images have shown that negatively charged glycocalyx are bound to the luminal side of the endothelium, also covering the fenestrae<sup>78</sup>. Thus, macromolecules are retained in the blood by the ECs based both on charge and size<sup>79</sup>. The GBM consists of laminins, type IV collagen, nidogen and heparan sulfate proteoglycans, synthesized by ECs and podocytes<sup>80</sup>. GBM contributes to the filtration process based on size and charge but also constitutes the main structural support for the glomerular capillary wall<sup>81</sup>. Podocytes, that are specialized and differentiated cells, consist of a cell body, major processes and foot processes and have an essential role in maintaining the filtration barrier (Fig 5.). The podocyte foot processes interact with the neighbouring podocytes and are regulated by their actin cytoskeleton. The filtration slit constitutes the space between foot processes, and is bridged by the slit diaphragm<sup>82</sup>. The slit diaphragm is a structure composed of several different molecules that all have specific roles in maintaining the podocyte specific filtration barrier<sup>82-84</sup>. Apart from size exclusion, the exact filtration capacity of the slits is still debated.



**Fig 5. Schematic overview of the renal corpuscle, renal capillaries and the glomerular filtration barrier**  
*CD2AP ;CD2-associated protein. Derived from*<sup>76</sup>

### 1.2.1.2 Renal tubule

The renal tubule (Fig. 4) is the latter part of the nephron and holds the primary urine that has been filtered through the glomerulus. The primary urine passes through the proximal convoluted tubule that constitutes of an epithelial cell layer connected by tight junctions. Here glucose and about 70% of the sodium and water are reabsorbed from the primary urine. Next in the loop of Henle, a U-shaped tubule, sodium and the remaining water are reabsorbed.



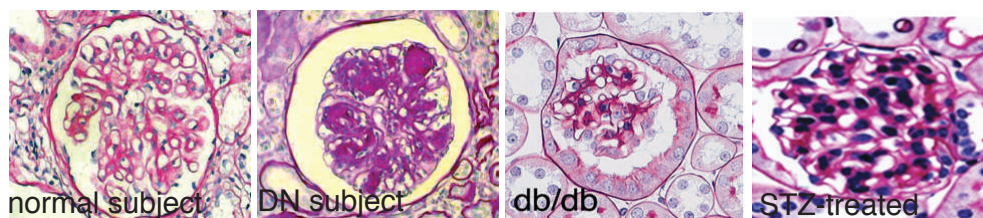
Finally, in the distal convoluted tubule, sodium is reabsorbed through coupled secretion of protons and potassium ATP-dependent ion channels<sup>74,75</sup>.

### 1.2.2 Pathology of diabetic nephropathy

DN is caused by impaired filtration capacity of the kidney, and as a consequence larger molecules, like proteins, will leak into the urine<sup>85</sup>. Both genetic and environmental factors contribute to the development of DN. The disease slowly progresses over several years, and during the later stages there is a subsequent decline in the glomerular filtration rate that may ultimately lead to end-stage renal disease (ESRD)<sup>86</sup>. With the global increase in the prevalence of diabetes, the number of renal replacement therapy patients is also rapidly rising<sup>87,88</sup>.

The major histopathological characteristic of DN is the presence of glomerular lesions referred to as glomerulosclerosis<sup>89</sup>. A clinical indication of an injury to the GFB is the presence of albuminuria<sup>85</sup>, however among the first histological signs of DN is thickening of the GBM and glomerular mesangial expansion (GME)<sup>89</sup>. GME leads to the development of glomerulosclerosis, which may be focal, diffuse, segmental or global<sup>90</sup>. Also, an increase in the overall size of the glomerulus is detected, probably due to GME as well as a compensatory hyperfiltration<sup>89</sup>. Leakage in the glomeruli increases the pressure on the tubule to reabsorb solutes, which in turn activates the renin-angiotensin-aldosterone system (RAAS). RAAS activation increases both blood pressure<sup>91</sup> and the hydrostatic pressure in the glomeruli that may cause thickening of both the afferent and efferent arteriole. This morphology is referred to as arteriolar hyaline. In advanced nephropathy, tubular atrophy and interstitial fibrosis are also observed<sup>92</sup>, which can be a compensatory mechanisms for hypertension and the increased volume of the glomerular filtrate. Injury to the proximal convoluted tubule is further enhanced by an increase in sodium reabsorption and oxidative stress, which further contributes to hypertension<sup>93</sup>.

Several different animal models recapitulate relatively well the phenotypic characteristics of DN, most studies include the T2D model *db/db* and the T1D STZ-injected mouse models (Fig. 6). However, they do not recapitulate all the morphologies detected in DN patients and mentioned above, and often consist of complicated genetic mutations, or toxic agents. Therefore, much research is focused on finding novel animal models<sup>94</sup>.



**Fig 6. General glomerular morphology in health and disease**

Periodic acid–Schiff staining of glomeruli from normal or DN subjects, T2D *db/db* and STZ-treated T1D mouse models. The animal models recapitulate well the general morphology of DN with GME and thickening of Bowman's capsule basement membrane. However, the Kimmelstiel-Wilson Nodules are not detected in any animal models. STZ; Streptozotocin. Modified from<sup>76,95,96</sup>

It is still debated in which cell type the primary injury of DN occurs. Even though the tubule is affected, most studies indicate that injury to GFB is the causative factor for disease development. Specifically, mutations in genes coding for slit diaphragm proteins such as nephrin, CD2AP and podocin (Fig. 5), cause nephropathies<sup>97-99</sup> showing the importance of, at least, the slit diaphragm and podocytes in maintaining functional GFB. In line with this, podocyte number correlated inversely with albuminuria<sup>100</sup> and reduced podocyte numbers were reported in both T1D<sup>101</sup> and T2D<sup>102</sup>. Furthermore, podocyte detachment<sup>103</sup> and apoptosis<sup>104</sup> contributed to reduced GFB capacity in DN patients. Additionally, widening of podocyte foot processes has been observed in renal biopsies of diabetic patients with increased albumin excretion<sup>105,106</sup>.

#### *1.2.2.1 Mechanisms underlying DN*

The molecular mechanisms behind the abnormal glomerular alterations in DN are not understood. Homeostasis of the GFB depends on the integrity of podocytes, ECs and GBM and therefore, one could argue that any factor injuring, or changing the behaviour of any of these cell types may cause renal damage. The major causative factors for DN include hyperglycaemia and lipotoxicity<sup>84</sup>.

Over the years hyperglycaemia has predominantly been suggested to contribute to the pathogenesis of DN. Hyperglycaemia triggered the synthesis of advanced glycation end-products (AGEs) and induced oxidative stress<sup>107</sup>. Furthermore, hyperglycaemia promoted the synthesis of angiotensin II of the RAAS system<sup>91</sup>, that affects normal podocyte function and afferent arteriolar tone<sup>108,109</sup>. High levels of angiotensin II caused hypertension and induced cell damage, leading to proteinuria and initiating glomerulosclerosis<sup>110</sup>. Hyperglycaemia also activated transforming growth factor  $\beta$  (TGF- $\beta$ ), a key factor that drives the activation of fibroblasts, and thus renal fibrosis<sup>108</sup>. Also, activated TGF- $\beta$  diminished the expression of nephrin on the slit diaphragm<sup>111</sup>.

Today, interventions against DN focus largely on targeting hyperglycaemia, blood pressure and lifestyle changes. However, the prevalence of DN has increased in parallel with diabetes, despite higher usage of glucose-lowering agents<sup>112</sup>. Large cohort studies on T2D patients have been conducted to explore whether intensive management of blood glucose levels using anti-diabetic agents, could reduce the risk for DN and ESRD. Despite intensively controlled blood glucose levels, albuminuria was only slightly improved and serum creatinine levels were unaffected<sup>113,114</sup>. Furthermore, there was little or no effect on the incidence of ESRD and no change in death from renal disease despite intensive blood glucose management<sup>113,114</sup>.

Lipotoxicity has therefore lately been considered as a major underlying factor of the pathogenesis of DN. Already the original article on glomerulosclerosis in subjects described lipid deposits in the glomeruli<sup>90</sup>, and these were later confirmed by electron microscopy. Also, a high correlation between glomerular filtration rate, inflammation and lipid metabolism genes was detected in subjects with DN<sup>115</sup>. Lipids were shown to accumulate specifically in the podocytes<sup>115</sup> and podocytes treated with sera from patients with DN

displayed increased cholesterol levels, which were detrimental for podocyte cell function<sup>116</sup>. Higher intracellular lipid accumulation was found in tubule from patients with chronic kidney disease and mice with tubulointerstitial fibrosis in comparison to healthy controls<sup>117</sup>. Genetically manipulated mice with tubulointerstitial fibrosis could be protected from disease development if FA metabolism was restored<sup>117</sup>. Furthermore, oxidised LDL is associated with the progression of DN<sup>118</sup> and overexpression studies of the receptor for oxidised LDL and lipoproteins in mice, increased the expression of TGF- $\beta$ , vascular endothelial growth factor A (VEGF-A) together with kidney failure<sup>119</sup>. VEGF-A is secreted by podocytes, and its expression has been shown to be either up- or down-regulated in diabetic subjects, depending on the duration and stage of the disease<sup>120,121</sup>. VEGF-A seems to maintain the integrity of the GFB as both podocyte-specific excess, or deficiency, cause glomerular damage<sup>122,123</sup>.

Interestingly, podocytes can also develop insulin resistance. Podocytes express all components of the insulin-signalling cascade and glucose uptake in podocytes was increased after insulin stimulation, mainly through translocation of GLUT4<sup>124</sup>. It was found that insulin resistance correlated with the development of albuminuria in both T1D and T2D subjects<sup>125-128</sup>. Additionally, impaired insulin sensitivity altered renal glucose cell metabolism and caused kidney damage independent of hyperglycaemia<sup>128</sup> and GLUT4 expression was downregulated upon the development of albuminuria<sup>129</sup>. Mice carrying a podocyte-specific deletion of the insulin receptor gene developed a phenotype resembling DN without any effect on blood glucose levels<sup>15</sup>. There have been a few studies elucidating what mechanism causes insulin resistance in podocytes, and linking lipotoxicity as the causative factor. Palmitate could block insulin-stimulated glucose uptake in human podocytes *in vitro*, suggesting a lipid-mediated inhibitory effect on insulin sensitivity<sup>130</sup>. Indeed, increased ceramide production in podocytes caused reduced phosphorylation of the insulin receptor and impaired translocation of GLUT4 to the cell surface<sup>130</sup>. Furthermore, LDL<sup>131</sup> and saturated FAs have also been shown to affect podocyte function and induce insulin resistance<sup>130</sup>. Taken together, lipotoxicity and insulin resistance in podocytes could be important contributors to the disruption of the GFB.

### 1.3 ENDOTHELIAL LIPID UPTAKE

Lipids are the most energy dense nutrients, and are vital for normal cell processes and function. Reliable systems for transport of lipids to all cells of the body are therefore imperative. Nutrients are delivered to tissue cells via blood vessels, characterized by a lining of ECs, the endothelium, covering the inner surface and thus adjacent to the blood that passes through. It has for long been acknowledged that the endothelium has a barrier function<sup>132</sup>. However, it has been overlooked that nutrients such as lipids, going from the bloodstream into the tissue cells, also have to pass the endothelium. The preferred sort of nutrient varies between tissue and cell type and may also change upon different physiological stimuli. Therefore, mechanisms controlling nutrient uptake should exist. Furthermore, it would also demand less energy for the organism to limit nutrient uptake already at the vascular wall. Research has shown that the endothelium can act as a barrier for FA uptake<sup>133-135</sup>. However, it was only recently that a detailed mechanism for how myocytes can regulate lipid uptake through the endothelium was discovered, via secreting VEGF-B<sup>136</sup>.

#### 1.3.1 Lipid transport and lipid transporters

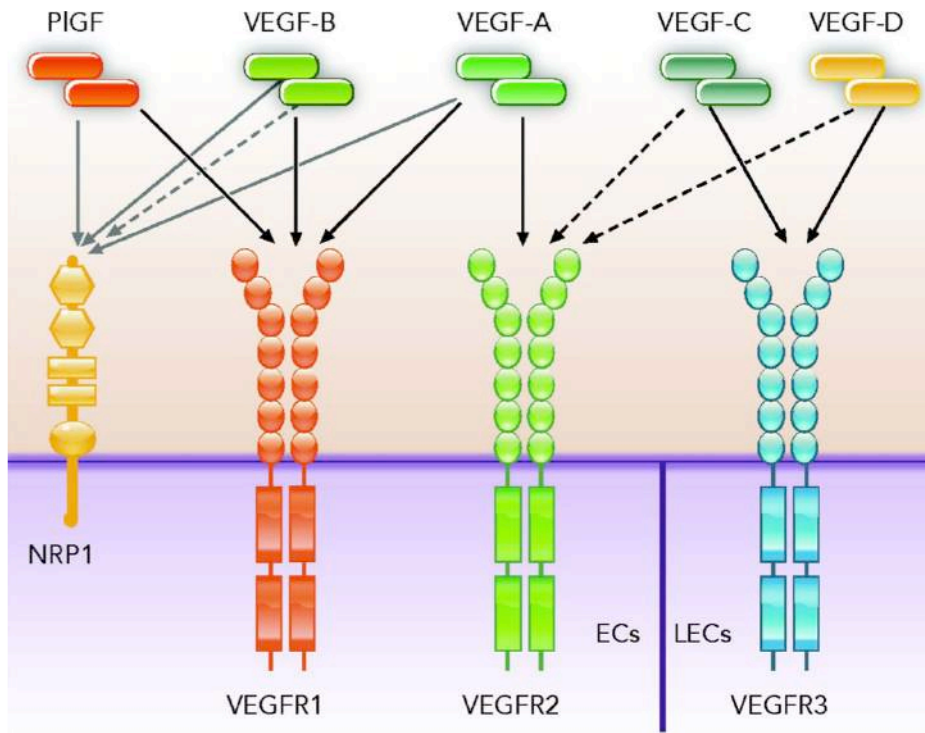
Organs with high metabolic activity such as heart, skeletal muscle and brown adipose tissue use lipids as their primary nutrient source. Most dietary lipids consist of long chain fatty acids (LCFAs, FAs with 12-20 carbons). FA are transported in the bloodstream either as TG rich lipoproteins during fed-states, or bound to albumin during fasting<sup>137</sup>. TGs are hydrolyzed at the site of peripheral tissues by lipoprotein lipase, which is anchored at the luminal side of the endothelium<sup>138</sup>. Research has focused on LCFA transport across the sarcolemma<sup>139,140</sup> since lipids were suggested to simply diffuse through the endothelium. However, secreted VEGF-B from tissue cells has been shown to signal in a paracrine fashion to the endothelium to induce the expression of two fatty acid transport proteins, FATP3 and FATP4 (Fig. 8) and consequently promote regulated lipid uptake<sup>136</sup>.

FATP3 and 4 belong to the evolutionary conserved FATP family constituted of six mammalian 70-80 kDa large multi-transmembrane spanning proteins (FATP1-6)<sup>141,142</sup>. *Fatp4* is abundantly expressed, for example in myocytes, skin and in the endothelium<sup>141,143</sup> whereas *Fatp3* is expressed specifically in the vasculature at least in muscular tissues<sup>136</sup>. *Fatp4*<sup>-/-</sup> mice are embryonically/neonatally lethal<sup>143</sup> due to defects in FA absorption and/or to a disrupted epidermal barrier<sup>143</sup>. All FATPs have been shown to enhance cellular FA uptake *in vitro*<sup>136,144</sup>. However, the subcellular localization of the FATPs has been debated as well as if they simply drive cellular FA influx by intracellular acylation of FAs<sup>145</sup>

#### 1.3.2 VEGF-B signalling

The VEGFs have a major role in controlling angiogenesis and lymphangiogenesis, both during embryogenesis and in the adult state<sup>146,147</sup> as well as during pathophysiological conditions<sup>148</sup>. Mammalian members include VEGF-A, VEGF-B, VEGF-C, VEGF-D and placenta growth factor (Plgf)<sup>148</sup>. VEGFs act by binding to the tyrosine kinase receptors: VEGF receptor (VEGFR) 1, VEGFR2, VEGFR3 and the co-receptor neuropilin (NRP)-1

in an overlapping pattern (Fig. 7). VEGF-B binds to VEGFR1 and NRP1. VEGF-B is synthesized as two isoforms by alternative splicing, VEGF-B<sub>167</sub> and VEGF-B<sub>186</sub><sup>149,150</sup>. In adults, VEGF-B<sub>167</sub> is the prevalent isoform and binds to cell surface heparan sulphate proteoglycans<sup>151</sup>. On the contrary, VEGF-B<sub>186</sub> is freely diffusible and requires proteolytic cleavage before binding to NRP1<sup>152</sup>. However, the exact signalling mechanism of VEGF-B/NRP1/VEGFR1 is still far from understood.



**Fig 7. VEGF receptors, ligands and signalling**

The VEGF ligands bind to VEGFRs in a partially overlapping fashion. VEGF-B, PIGF and VEGF-A also bind to the co-receptor NRP1 (grey arrows). Dashed lines indicate that proteolytic cleavage is needed before receptor binding. From<sup>153</sup>

### 1.3.2.1 VEGFR1 and NRP1, receptors of VEGF-B

VEGFR1 is a member of the tyrosine kinase receptor superfamily with an approximately 750-amino-acid-residue extracellular domain that binds VEGF-A, -B and PIGF<sup>154</sup>. The role of VEGFR1 during development has been extensively studied, during which VEGFR1 seems to primarily trap VEGF-A<sup>155</sup>, via its higher affinity for VEGF-A<sup>156</sup> and thus hinder VEGF-A/VEGFR2 signalling. *Vegfr1*<sup>-/-</sup> as *Vegf*<sup>+/-</sup> embryos, die prenatally<sup>155,157</sup>, whereas deletion of only the intracellular signalling domain of VEGFR1 (*Vegfr1* TK<sup>-/-</sup> mice) resulted in healthy and fertile mice<sup>158</sup>. VEGFR-1 has the ability to bind tightly to its ligands but has a weak tyrosine kinase activity, generating signals weaker than VEGFR-2<sup>159</sup>. Therefore, it was suggested that VEGFR1 in the adult state does not have a signalling capacity *per se* but rather acts as solely a sink, trapping VEGF-A<sup>160</sup>. Even though the signalling capacity of VEGFR1 is not yet exactly understood, recent data has shown that upon stimulation with VEGF-A or PIGF, VEGFR-1 can initiate phosphorylation of distinct downstream proteins in monocytes<sup>147,161</sup>. *Vegfr1* is expressed on ECs, monocytes and macrophages<sup>162,163</sup> and has

been shown to be a positive regulator of monocyte and macrophage migration<sup>161,162</sup> and to have a role in tumour progression<sup>164</sup>.

NRP1 is a 130- to 140-kDa transmembrane glycoprotein<sup>165</sup> and is expressed in ECs, neural progenitors, macrophages and myocytes<sup>166-168</sup>. NRP1 has been shown to contain a PDZ-domain in its C-terminus, which enables the binding and signalling to downstream targets<sup>169</sup>. NRP1 is important for normal nervous system development and required for blood vessel patterning and normal lymphatic valve formation<sup>170,171</sup>.

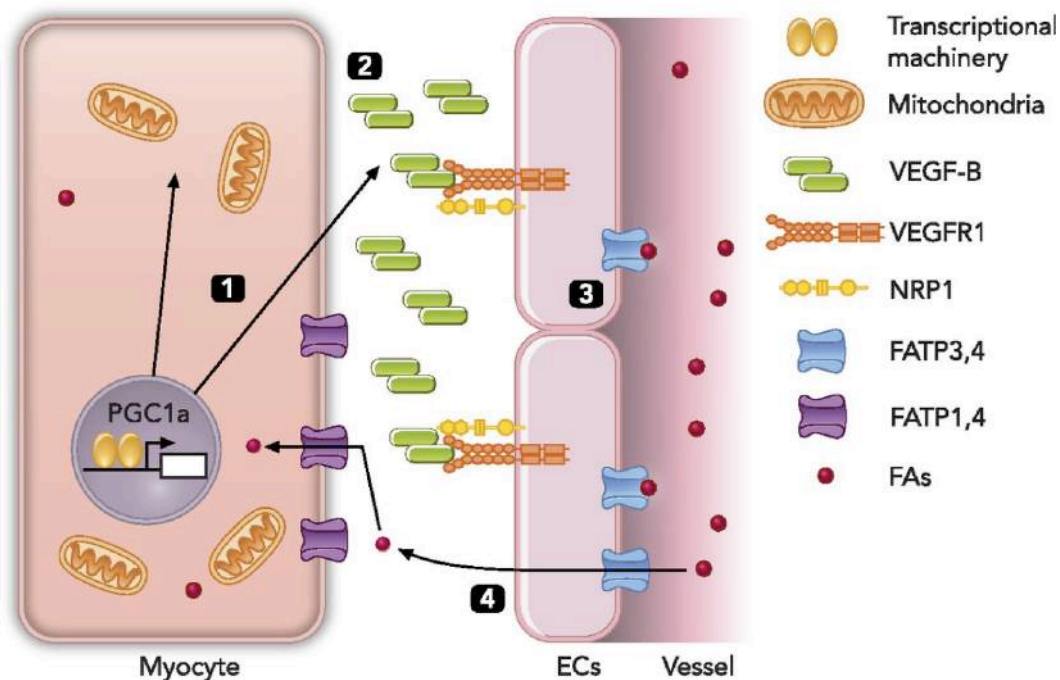
### 1.3.2.2 The biological function of VEGF-B

VEGF-B was for long assumed to have a similar function as its closest homologue, VEGF-A. Therefore, several studies have focused on VEGF-B in areas related to the known functions of VEGF-A. However, in contrast to the other VEGFs, VEGF-B is not upregulated by hypoxia, poorly angiogenic and does not induce vascular permeability in animals or tissues<sup>172-174</sup>. Although *Vegfb*<sup>-/-</sup> animals are healthy and fertile and present a normal life span<sup>175</sup>, VEGF-B has been reported as a survival factor for different cell types by inhibiting apoptosis<sup>176,177</sup>. *Vegfb*<sup>-/-</sup> animals have minor cardiac abnormalities, such as smaller hearts and an increased PQ interval<sup>175,178</sup>. VEGF-B has been shown to induce arteriogenesis, both in rats with cardiac VEGF-B overexpression and in pigs with local adenoviral delivery of VEGF-B<sup>174,179</sup>. Increased VEGF-B levels have also been implicated in the development of different cancers<sup>180</sup>. In contrast, retarded tumour growth was detected when overexpressing VEGF-B in a mouse model for pancreatic cancer (RIP-Tag)<sup>181</sup>. Hence, the role of VEGF-B in angiogenesis, cell survival and tumour growth remains enigmatic.

*Vegfb* is expressed in tissues with high metabolic activity with enriched mitochondrial content such as heart, skeletal muscle and brown fat<sup>136,151,152</sup>. Mice with cardiac VEGF-B overexpression, displayed increased accumulation of ceramides, hypertrophy, mitochondria lysis and premature death<sup>182</sup>. When overexpressing VEGF-B by adenoviral delivery in pig and rat heart two diverging metabolic states were detected. Overexpression of VEGF-B in pig myocardium caused an upregulation of the *Fatps* as well as tissue lipid accumulation<sup>183</sup>. In contrast, VEGF-B overexpression in rats downregulated genes involved in FA metabolism whereas glucose uptake was increased<sup>179</sup>. These opposite effects may stem from receptor saturation, as techniques such as adenoviral delivery or transgenic overproduction may produce unphysiological protein levels.

Genetic deletion of *Vegfb* in mice decreased the expression of muscular *Fatps* and peripheral FA uptake, and instead the FAs were shunted to the AT<sup>136</sup>. The FA transport capacity was unique for VEGF-B as endothelial cells stimulated with, PlGF or VEGF-A, did not upregulate the expression of FATPs and FA transport. The FA uptake capacity was also dependent on both VEGFR1 and NRP1. *Vegfr1* *TK*<sup>-/-</sup> and inducible EC-specific *Nrp1*<sup>-/-</sup> mice displayed reduced cardiac *Fatp3* and *Fatp4* expression and tissue lipid accumulation<sup>136</sup>. Positron emission tomography analysis of *Vegfb*<sup>-/-</sup> mice showed that

glucose uptake to the cardiac muscle was increased<sup>136</sup>. These data suggest that inhibition of VEGF-B reprograms the endothelium to change substrate utilization – from lipids to glucose.



**Fig 8. Schematic illustration on the role of VEGF-B in FA-transport**

1: *Vegfb* expression is coordinated with the expression of mitochondrial proteins to co-regulate lipid uptake and  $\beta$ -oxidation. 2: VEGF-B, signals in a paracrine fashion to the receptors VEGFR1 and NRP1 present on endothelial cells (ECs), which 3: upregulates the expression of FATPs and induces subsequent transport of FAs across the EC layer into tissue cells (4). From<sup>153</sup>

There are some implications linking the VEGF-B signalling pathway to FA-transport and diabetes in humans. VEGF-B is upregulated in omental AT from obese subjects compared to lean individuals<sup>184</sup>, suggesting an increased lipid uptake into AT. Also, serum VEGF-B levels were positively correlated to total cholesterol and triglyceride (TG) levels in T2D subjects<sup>185</sup>. Furthermore, serum VEGF-B levels were positively associated with polycystic ovary syndrome and insulin resistance<sup>186</sup>. Also, associations between the genes in the VEGF-B signalling pathway and traits coupled to lipid handling and diabetes have been detected. *Vegfr1* sequence variants have been correlated with coronary heart disease<sup>187</sup> and body weight<sup>188</sup>. Genetic variants of *Nrp1* have been linked with body weight<sup>188</sup> and cardiac hypertrophy<sup>189</sup>. A sequence variant in *Fatp4* was identified to be associated with the metabolic syndrome and insulin resistance<sup>190</sup>. To conclude, the biological role of VEGF-B has for long been enigmatic, with several publications showing diverging, or even opposite results. However, both human and mouse data imply that VEGF-B has an important role in endothelial FA uptake, via VEGFR1, NRP1, FATP3 and FATP4.

### 1.3.3 PGC-1 $\alpha$ , master regulator of mitochondrial biogenesis

Peroxisome proliferator-activated receptor  $\gamma$  coactivator 1 $\alpha$  (*Ppargc1a* / PGC-1 $\alpha$ ) is a transcriptional coactivator that exerts its functions via binding to several transcription factors, e.g. estrogen-related receptor alpha (ESRR $\alpha$ )<sup>191</sup>, peroxisome proliferator-activated receptor

gamma (PPAR $\gamma$ )<sup>192</sup> and nuclear respiratory factor 1 (NRF1)<sup>193</sup>. PGC-1 $\alpha$  is ubiquitously expressed in organs such as heart, skeletal muscle, kidney, liver, AT and pancreas<sup>194</sup>. Several different physiological stimuli can induce PGC-1 $\alpha$  both transcriptionally and post-transcriptionally, including exercise, cold and fasting<sup>194,195</sup>. PGC-1 $\alpha$  is synthesised as multiple isoforms with somewhat different expression patterns and functions, although the detailed function for each isoform is to date not clear<sup>196-198</sup>.

Binding of PGC-1 $\alpha$  to transcription factors induces specific signalling pathways and the biological functions that are regulated by that transcription factor. Importantly, PGC-1 $\alpha$  is a powerful inducer of mitochondrial biogenesis by co-activating NRF1 and ERR $\alpha$ , and thus regulating hundreds of nuclear-encoded genes activating mitochondrial biogenesis and  $\beta$ -oxidation<sup>193</sup>. Furthermore, activation of PPAR $\alpha$  by PGC-1 $\alpha$  increased the expression of genes involved in FA import and  $\beta$ -oxidation<sup>199,200</sup>. PGC-1 $\alpha$  also increased lipid anabolism *in vitro*, including intracellular FA and ceramides<sup>201</sup>. Also *in vivo*, *de novo* lipogenesis, fatty acid synthase and FATP4 expression were increased in muscle specific PGC-1 $\alpha$  transgenic mice (muscle creatine kinase PGC-1 $\alpha$  transgenic mice, MPGC-1 $\alpha$  TG)<sup>202,203</sup>. Thus, PGC-1 $\alpha$  can simultaneously coordinate FA import, mitochondrial biogenesis,  $\beta$ -oxidation and *de novo* lipogenesis depending on different extrinsic signals.

A common pathology in T2D is dysfunctional and insufficient muscular mitochondria<sup>204</sup>. Microarray studies of muscle biopsies from T2D patients showed decreased levels of PGC-1 $\alpha$  as well as genes coding for mitochondrial biogenesis<sup>57,205,206</sup>. Also, increased muscular expression of PGC-1 $\alpha$ , increased GLUT4-dependent glucose uptake *in vitro*<sup>207</sup>. These data suggested that, insulin resistance in T2D might be attributed to reduced levels of or dysfunctional PGC-1 $\alpha$  and thus decreased mitochondrial content<sup>57</sup>. Studies using animal models have however not been as straightforward. PGC-1 $\alpha$  full body knockout (*Pgc-1 $\alpha$ <sup>-/-</sup>*) mice had fewer mitochondria and diminished respiratory capacity, but surprisingly in response to HFD the *Pgc-1 $\alpha$ <sup>-/-</sup>* mice were more insulin sensitive than WT controls<sup>208</sup>. Mice with a specific deletion of PGC-1 $\alpha$  in skeletal muscle, did not develop insulin resistance, but had an altered glucose homeostasis<sup>209</sup>. MPGC-1 $\alpha$  TG mice displayed reduced insulin sensitivity under HFD-feeding despite increased mitochondrial density and activity<sup>16,202</sup>. In rats, long term HFD-feeding increased the expression of *Ppargc1a*. Also in humans, 3 days of overfeeding caused elevated PGC-1 $\alpha$  protein levels that returned to basal at the end of the study<sup>210,211</sup>. Moreover, increased PPAR $\alpha$  and PGC-1 $\alpha$  expression in murine insulin-resistant and in diabetic hearts have been detected<sup>212-214</sup>. Therefore, in the absence of exercise or during obesity, atypically high PGC-1 $\alpha$  levels and thus an increased rate of glycogen and fat anabolism may lead to metabolic imbalance, eventually developing into diabetes.

### 1.3.3.1 Linking PGC-1 $\alpha$ to angiogenesis and lipid uptake

PGC-1 $\alpha$  is a major regulator of mitochondrial biogenesis whereas VEGFs are major regulators of angiogenesis and lipid uptake. Therefore, it would make sense to couple PGC-



1 $\alpha$  with VEGFs to synchronize cellular and tissue growth via angiogenesis, endothelial lipid uptake and mitochondrial biogenesis.

PGC-1 $\alpha$  has in many studies been shown to control VEGF-A expression and consequently angiogenesis. Upon starvation, PGC-1 $\alpha$  regulated angiogenesis via increased VEGF-A expression, mediated via ERR $\alpha$  in myocytes<sup>215</sup>. Also, exercise and cold induced angiogenesis via PGC-1 $\alpha$  and VEGF-A in muscle and AT<sup>196</sup> as well as deletion of PGC-1 $\alpha$  in cardiomyocytes, lead to vascular defects<sup>216</sup>. Interestingly, all these angiogenic pathways were hypoxia-independent arguing that there might be a difference in how physiological and pathological angiogenesis is regulated<sup>215,196</sup>. In diabetes, vessels and ECs are damaged and reduced in number and factors such as AGEs, ROS, and FAs have all been suggested to contribute to the diabetic pathology<sup>217,218</sup>. Upregulation of PGC-1 $\alpha$  levels were detected in ECs from diabetic patients, and PGC-1 $\alpha$  also inhibited endothelial migration via activation of Notch signalling. Therefore, hyperglycaemia was thought to activate PGC-1 $\alpha$  in ECs that in turn would inhibit vessel re-endothelialisation, processes involved, in for example, wound healing<sup>219</sup>.

As discussed earlier, PGC-1 $\alpha$  induced lipid uptake via *e.g.* CD36 and FATP4. How about PGC-1 $\alpha$  and lipid uptake in the context of VEGF-B? The expression of VEGF-B was closely correlated to the expression of mitochondrial genes controlled by PGC-1 $\alpha$  in a large-scale survey of the expression of nuclear-encoded mitochondrial genes<sup>57</sup>. Also, this co-expression between VEGF-B and mitochondrial genes was found when analysing publically available microarray data<sup>136</sup>. *Vegfb* expression clustered together with genes coding for oxidative phosphorylation and this co-expression was specific for *Vegfb* and not detected for *Vegfa* or *Plgf*<sup>136</sup>. Furthermore, in an attempt to identify novel PGC-1 $\alpha$  targets in muscle, array analysis identified *Vegfb* as a novel myokine in MCK-PGC-1 $\alpha$  TG<sup>220</sup>.

Thus, these data suggest that by regulating PGC-1 $\alpha$  levels, the tissue cell can quickly respond to changes in the environment, and as a consequence lipid uptake, mitochondrial biogenesis and  $\beta$ -oxidation as well as angiogenesis can be synchronized.



## 2 AIMS OF THIS THESIS

VEGF-B was previously shown to control lipid uptake from the endothelium into tissue cells and genetic ablation of *Vegfb* reduced intra-tissue lipid accumulation in mice. Apart from this, little is known regarding the metabolic role of VEGF-B in physiology and pathophysiology.

The aim of this thesis was to characterize the function of VEGF-B in metabolism.

The specific aims include;

- To optimize a robust protocol for visualization and quantification of neutral lipids in different tissues (Paper IV)
- To identify the upstream regulation of VEGF-B (Paper I)
- To evaluate if reducing VEGF-B signalling is beneficial for disease progression in rodent models of T2D (Paper II)
- To study whether reducing VEGF-B signalling, is beneficial for the disease progression in mouse models of DN (Paper III)
- To investigate whether the VEGF-B signalling pathway is present and altered in human DN subjects (Paper III)



### 3 PAPERS AND DISCUSSION

Since the material and methods and the results included in this thesis are discussed and presented in detail within each paper, only a short summary of the rationale and the main findings are presented and discussed here below.

#### 3.1 PAPER I; PGC-1 ALPHA COORDINATES MITOCHONDRIAL RESPIRATORY CAPACITY AND MUSCULAR FATTY ACID UPTAKE VIA REGULATION OF VEGF-B

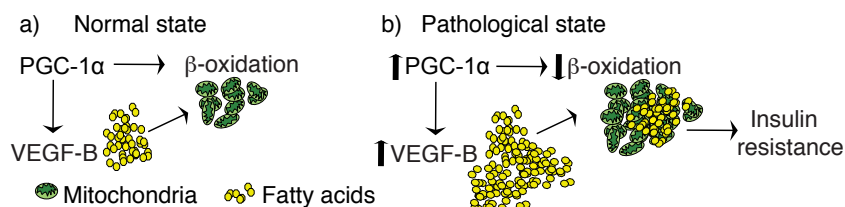
The upstream regulatory mechanisms of controlling VEGF-B expression had not previously been characterised, and were thus unknown. It had been shown that the expression of VEGF-B clustered together with the expression of nuclear-encoded mitochondrial genes, and that VEGF-B regulated FA-transport<sup>136</sup>. The co-activator PGC-1 $\alpha$  is a major regulator of mitochondrial function and energy metabolism<sup>221</sup>. Increased expressional levels of VEGF-B were reported in mice with a specific overexpression of PGC-1 $\alpha$  in muscles (MPGC-1 $\alpha$  TG mice)<sup>220</sup>. Therefore, we aimed to investigate whether PGC-1 $\alpha$  could be a potential direct regulator of VEGF-B.

First, transfection analyses *in vitro* confirmed that co-expression of ESRR $\alpha$  and PGC-1 $\alpha$  induced expression of *Vegfb* luciferase reporter construct containing the first kilobase of the 5' untranslated region together with the first exon and the first intron of the *Vegfb* gene. Neither of the other transcription factors tested, NRF1 and PPAR $\gamma$  could activate *Vegfb*. Also, we detected a putative ESRR $\alpha$  binding site upstream of the *Vegfb* gene. Next, we aimed to validate these data *in vivo*, using the MPGC-1 $\alpha$  TG mice. Q-PCR analysis of MPGC-1 $\alpha$  TG muscle revealed that expression of *Vegfb* was upregulated, and in parallel IMCL accumulation was increased, compared to WT littermate. In contrast, when *Vegfb* was deleted in MPGC-1 $\alpha$  TG mice, IMCL levels were greatly decreased, however without affecting  $\beta$ -oxidation. This implies that the reduced IMCL accumulation in MPGC-1 $\alpha$  TG/*Vegfb*<sup>-/-</sup> mice was due to reduced lipid uptake and that PGC-1 $\alpha$  can control tissue lipid content via regulating VEGF-B expression.

It has previously been shown that HFD-fed MPGC-1 $\alpha$  TG mice developed insulin resistance, which was considered paradoxical as mitochondrial biogenesis was increased in these mice<sup>16</sup>. We hypothesized that the insulin resistance in these mice could be due to an upregulation of VEGF-B expression and consequently increased IMCL accumulation (Fig 9a). Indeed, markedly increased IMCL accumulation was detected in HFD-fed MPGC-1 $\alpha$  TG mice. Consistently, in HFD-fed MPGC-1 $\alpha$  TG/*Vegfb*<sup>-/-</sup> mice, IMCL levels were greatly decreased and insulin sensitivity restored, and even normalized to lean control levels. These data suggested that insulin resistance in MPGC-1 $\alpha$  TG mice is due to increased VEGF-B levels resulting in enhanced lipid uptake promoting lipotoxicity.

Taking together, we show both *in vitro* and *in vivo* that PGC-1 $\alpha$  regulates the expression of *Vegfb* and by this mechanism lipid uptake can be coordinated with mitochondrial biogenesis and  $\beta$ -oxidation (Fig 9a). We also provide evidences that the paradoxical phenotype of the

MPGC-1 $\alpha$  TG HFD-fed mice is due to increased VEGF-B expression and signalling. However, whether in humans overfeeding activates the PGC-1 $\alpha$ /ESRR $\alpha$  pathway and consequently increases *Vegfb* expression, and if this is the mechanism by which muscular lipotoxicity and insulin resistance develops in progressive T2D remains to be established (Fig 9b).



**Fig. 9 Schematic illustration of PGC-1 $\alpha$  dependent regulation of VEGF-B and FA uptake.** a: During normal physiological conditions, PGC-1 $\alpha$  coordinates mitochondrial biogenesis and  $\beta$ -oxidation with FA uptake. b: In pathological states such as obesity or T2D, VEGF-B and PGC-1 $\alpha$  levels could be upregulated, whereas mitochondrial function and  $\beta$ -oxidation are known to decline. This would cause a metabolic imbalance where FA uptake remains high, whereas the oxidative capacity of the tissue is reduced, resulting in tissue lipid accumulation, inducing insulin resistance and T2D (Modified from Mehlem et al under revision in *Diabetes*).

### 3.2 PAPER II; TARGETING VEGF-B AS A NOVEL TREATMENT FOR INSULIN RESISTANCE AND TYPE 2 DIABETES

It has previously been shown that inhibition of VEGF-B signalling in unchallenged mice, not only reduced FA uptake but also increased glucose uptake into myocytes<sup>136</sup>. Therefore we rationalized that one of the core pathologies causing T2D, namely lipotoxicity, could be targeted by reducing VEGF-B signalling and potentially be beneficial for treating the disease.

To study this, we first analysed how genetic ablation of *Vegfb* in two different mouse models of obesity and T2D (*db/db* and HFD-fed mice) affected the development of T2D. In both animal models, *Vegfb* deficient mice showed reduced peripheral lipid deposition and improved hyperglycaemia, dyslipidaemia, glucose tolerance as well as enhanced insulin sensitivity in comparison to control animals.

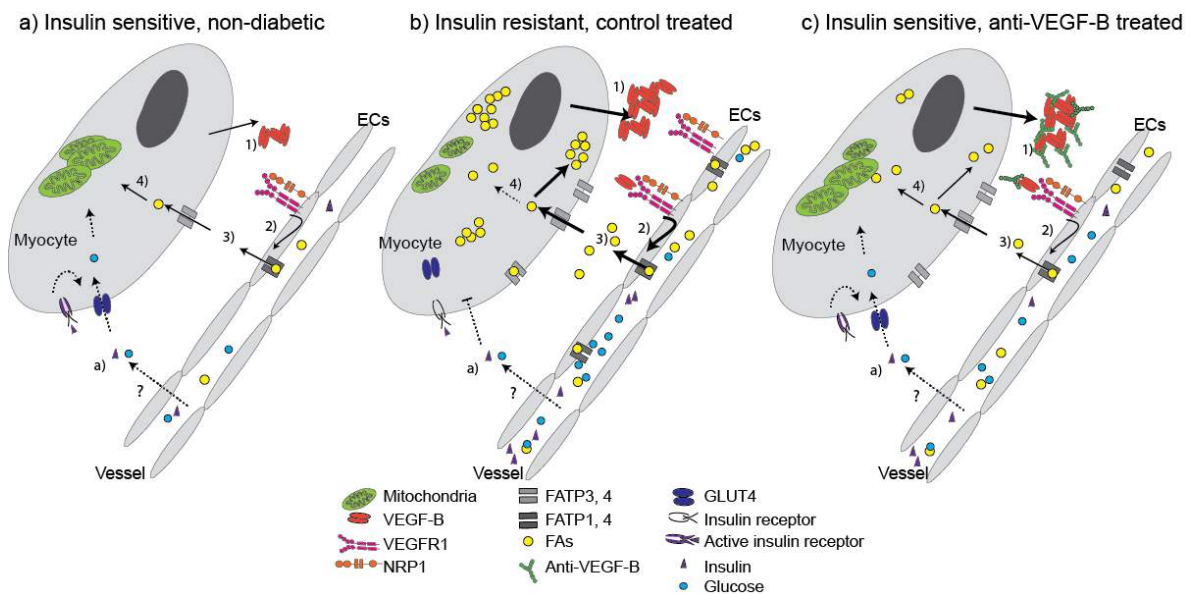
Next, to rule out any possible developmental effects, and to explore the therapeutic potential of VEGF-B inhibition we used antibody administration to pharmacologically reduce VEGF-B signalling in *db/db* mice. Anti-VEGF-B antibody treatment reduced peripheral lipid accumulation, enhanced glucose tolerance and improved dyslipidaemia compared to control treated *db/db* mice. Interestingly, also pancreatic islet architecture and  $\beta$ -cell function were maintained by anti-VEGF-B treatment in *db/db* mice. Whether this improved effect on the  $\beta$ -cells is due to reduced metabolic pressure from lipotoxicity, glucotoxicity, both, or other unknown factors remain to be investigated.

Since *db/db* mice have been selected to spontaneously develop T2D, we sought to analyse the effects of anti-VEGF-B antibody treatment on T2D in another diabetic model and in a different species. To address this, HFD-fed rats were treated with an anti-VEGF-B antibody or isotype-matched control antibody, and subjected to a hyperinsulinemic-euglycaemic clamp assay, where insulin sensitivity is monitored. Inhibition of VEGF-B signalling increased

insulin sensitivity and glucose uptake to skeletal muscle and heart compared to control antibody injected rats.

Recently, diverging results from our study have been found when comparing the two available different *Vegfb*<sup>-/-</sup> strains side by side on HFD, including the one used in paper II<sup>178</sup>. Dijkstra *et al* could not detect any differences between WT and *Vegfb*<sup>-/-</sup> mice in glucose tolerance or dyslipidaemia after HFD-feeding. However, Dijkstra *et al* analysed plasma lipids after 18h of fasting, whereas we analysed postprandial levels. Importantly, Dijkstra *et al* reported that the Bellomo mice were on a partly mixed background<sup>222</sup>, inconsistent with our results. To further analyse the effects of reducing VEGF-B signalling during HFD conditions, would therefore be of importance.

Taken together, in the diabetic experimental animal models studied here, peripheral lipid accumulation mediated by VEGF-B is a major part of the diabetic pathology (Fig. 10 a-b). Importantly, we show using both genetic and pharmaceutical tools that VEGF-B signalling can be targeted, to reduce IMCL accumulation and to increase glucose uptake into peripheral tissues (Fig. 10c). However, whether VEGF-B signalling pathway can be used to treat T2D also in patients remains to be established.



**Fig. 10 Schematic illustration of the role of *Vegfb* in physiological and pathophysiological states.**

**a)** In the insulin sensitive state, *Vegfb* is secreted and binds to 1) endothelial VEGFR1 and NRP1 2). FATP3 and FATP4 are upregulated and subsequently FAs are transported across the endothelium and through the 3) tissue cell and transported to the 4) mitochondria for  $\beta$ -oxidation. a) Insulin and glucose are transported through the endothelium, insulin signalling is activated and glucose is taken up by the cell. **b)** In the insulin resistant, diabetic state, the expression of *Vegfb* is upregulated 1) and consequently endothelial FATP expression is increased 2), more FA are fed to the tissue cell 3) which leads to an 4). increased ectopic lipid accumulation. a). Ectopic lipid accumulation inhibits insulin signalling and thus glucose uptake. **c)** By inhibiting *Vegfb* via anti-VEGF-B treatment 1) *Vegfb* signalling is reduced 2) and less FAs are transported across the endothelium 3). Thus, ectopic lipid accumulation is reduced 4) and the tissue cell is a). re-sensitized to insulin and glucose is taken up

### 3.3 PAPER III; REDUCING VEGF-B SIGNALLING AMELIORATES RENAL LIPOTOXICITY AND PROTECTS AGAINST DIABETIC NEPHROPATHY

In *db/db* mice with genetic ablation of *Vegfb*, reduced levels of glucosuria, were detected in comparison to control mice (paper II). Therefore, we aimed to investigate whether lipotoxicity is a cause of not only diabetes, but also of DN, and if inhibition of VEGF-B signalling can improve the outcome of DN.

Firstly, the kidney phenotype of a standard mouse model of DN, *db/db* was examined with regards to VEGF-B signalling. In *db/db* mice, the progression of diabetes was associated with increased expression levels of *Vegfb* in whole kidney lysates, together with an increase in glomerular lipid accumulation and podocyte loss. Therefore, we hypothesized that inhibition of VEGF-B signalling, and thus less glomerular lipid accumulation might be beneficial in DN. To explore this, we first analysed how genetic deficiency of *Vegfb* affected the development of DN in two different mouse models, *db/db* and HFD-feeding. Reduced glomerular lipotoxicity, improved renal function as well as diminished GBM thickening, GME and podocyte loss were detected upon *Vegfb* deletion in both animal models.

Next, the therapeutic potential of reducing VEGF-B signalling was studied using antibody administration to *db/db* BKS and HFD-fed mice. Importantly, improved effect on insulin resistance and dyslipidaemia was confirmed in anti-VEGF-B antibody treated HFD-fed mice, thus questioning the findings of Dijkstra *et al.* However, in contrast to Paper II only modest effects on blood glucose levels were detected upon VEGF-B inhibition in *db/db* BKS mice. Two different mouse backgrounds were used in these studies. Paper II used a *db/db* BKS/ C57/BL6 mix whereas here we used a pure *db/db* BKS mouse line. It has been shown that the *db/db* mice on a BKS background develop a more severe hyperglycaemia that progress much faster than on a C57/BL6 background<sup>223</sup>, which we also could confirm (Paper III). Therefore, anti-VEGF-B antibody treatment seems to be efficient at targeting hyperglycaemia only if the diabetic pressure is intermediate (Paper II), and cannot halt hyperglycaemia when the progression is very aggressive (Paper III). Nevertheless, several hallmarks of DN could be improved with anti-VEGF-B antibody treatment, even despite that hyperglycaemia was not greatly altered. Reduced glomerular lipotoxicity, improved renal function as well as diminished GBM thickening, GME and podocyte loss were detected upon anti-VEGF-B antibody treatment. Hence, hyperglycaemia does not contribute significantly to the pathogenesis of DN, in this setting,

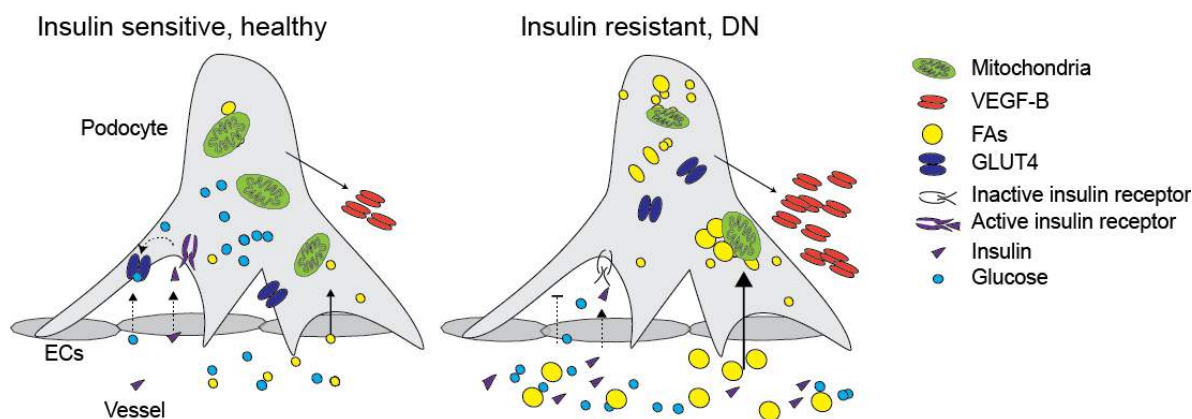
Renal dysfunction is not only a comorbidity of T2D, but also frequently found in T1D subjects. Lipotoxicity is being contributed to an increasingly larger role also in the pathology of T1D. Therefore, we next sought to investigate whether anti-VEGF-B antibody treatment could be beneficial in STZ-injected mice, a mouse model for T1D. Animals injected with STZ in combination with control antibody treatment, displayed severe renal dysfunction and glomerular lipotoxicity causing podocyte loss, traits that were near to normalized with anti-VEGF-B antibody administration.



To fully understand the therapeutic potential of reducing VEGF-B signalling, we next investigated whether VEGF-B expression was altered in human DN. Microarray analysis of renal biopsies from patients with DN revealed that glomerular VEGF-B production is increased compared to healthy subjects. This suggests that VEGF-B signalling is present and activated in human DN and that lipotoxicity could presumably be targeted using anti-VEGF-B antibody treatments.

Next, as glomerular VEGF-B expression levels were increased in human DN subjects, we aimed to explore the consequences of increased VEGF-B signalling specifically in the podocytes. Interestingly, in mice with podocyte-specific overexpression of VEGF-B, microalbuminuria could be induced in unchallenged mice, however with age the level of leakage was not aggravated. Upon HFD-feeding, a steady rise in albuminuria that developed into macroalbuminuria was detected in mice with podocyte-specific overexpression of VEGF-B. Hence, both elevated VEGF-B levels, as well as dyslipidaemia achieved by HFD-feeding, are needed for the progression of albuminuria to occur in these mice.

Our data in paper III suggest that glomerular-derived VEGF-B will promote ectopic lipid accumulation. During persisted elevated circulating FA levels, as in diabetes, podocyte VEGF-B expression is increased, causing lipotoxicity and podocyte insulin resistance with subsequent podocyte loss and impaired glomerular structure and function (Fig 11). Therefore, renal lipotoxicity is an important element of DN, and reducing VEGF-B signalling can ameliorate renal lipotoxicity. This represents a novel approach to treat DN (Fig 11).



**Fig 11, Schematic illustration of VEGF-B signaling in podocytes in healthy subjects and DN**

*In the healthy, insulin sensitive state, the circulating levels of FAs are low, as well as podocyte expression of Vegfb. Consequently FA uptake is low and insulin sensitivity maintained. In DN, plasma levels of FAs are increased, podocyte expression of Vegfb is upregulated and thus the uptake of lipids from the circulation into the podocyte is enhanced, causing lipotoxicity, insulin resistance and proteinuria (Modified from Falkevall et al. in submission).*

### 3.4 PAPER IV; IMAGING OF NEUTRAL LIPIDS BY OIL RED O FOR ANALYZING THE METABOLIC STATUS IN HEALTH AND DISEASE

All of the papers presented previously in this thesis required a method that enabled the detection of lipids within tissue cells. Not many easy and reliable techniques existed that could enable both quantification and visualization of intra tissue lipids.

Therefore, we aimed to develop a protocol that enabled the detection of neutral lipids as well as LD morphology, using Oil red-O (ORO). By using ORO, the lipid content could readily be quantified. To validate the robustness of the protocol, three different mouse models were analysed for lipid accumulation in three different tissues. Both in liver, heart and muscle, the highest lipid accumulation was detected in *db/db* animals, followed by HFD-fed and lastly normal diet. Hence, a protocol enabling easy quantification of neutral lipids and distribution is presented, that can be performed using only basic laboratory and computer equipment.

## 4 FUTURE PERSPECTIVES

The results included in this thesis are exciting for a broad scientific audience. We show that lipotoxicity is an important contributor to the progression of T2D (paper II) and DN (paper III), and that it can be targeted. This opens up for several interesting future implications. Could the development of other comorbidities associated with diabetes be halted using anti-VEGF-B agents as well, such as diabetic foot ulcers, stroke, hepatic steatosis and cardiovascular disease? Dyslipidaemia is a known risk factor for all of these comorbidities, however little research on the subject particularly in regards to intra-tissue lipid accumulation are available.

Furthermore, the identification of PGC-1 $\alpha$  as a regulator of VEGF-B in paper I prompts several interesting questions. Mainly, may inappropriately high PGC-1 $\alpha$  upregulate VEGF-B expression levels also in a human diabetic patients and if so, does increased VEGF-B signalling drive IMCL accumulation? Also, what are the underlying factors behind atypically high PGC-1 $\alpha$  levels in obesity and T2D?

Several questions of a more specific character also rise with the studies presented in this thesis. Among others, is reduced podocyte loss by inhibiting VEGF-B signalling due to a relief of lipotoxicity-mediated insulin resistance? Interestingly, pioglitazone, an agonist for PPARs, was effective in reducing albumin excretion and podocyte injury in early-stage diabetic nephropathy<sup>224</sup>. Pioglitazone functions as an insulin sensitizer and decreases lipid content in peripheral tissues<sup>225,226</sup>. Even though pioglitazone has been implicated with several side effects<sup>227,228</sup>, this study shows that podocyte survival can be targeted using a drug that decreases lipid accumulation, in line with our findings in paper III.

Finally, an important question that rises from our studies is whether hyperglycaemia is the pathology to target for diabetes and diabetic complications. VEGF-B acts by lowering intra-tissue lipid levels and in paper III we can almost halt the progression of DN in several mouse models, without reducing glucose levels. This is in line with large patient cohort studies where modest or no effect was found on the outcome of diabetic complications after intensively controlling and lowering blood glucose levels. High glucose levels are obviously toxic for the cell and can interfere with, among others, the insulin signalling pathway. However, if hyperglycaemia were the main pathological driver behind diabetic complications, a larger effect after intensively controlling it, would have been expected. Thus, the large cohort data as well as our studies suggest, that diabetic complications are not primarily caused by increased glucose levels, instead focus of research and drug development could be shifted towards lipotoxicity.

*Your theory is crazy, but it's not crazy enough to be true. Niels Bohr*



## 5 ACKNOWLEDGEMENTS

Colleges, friends and family deserve all my gratitude for making this thesis a reality. The biggest thanks go to my Supervisors, Ulf and Annelie.

Thank you **Ulf** for taking me on-board and letting me be a co-driver of your VEGF-B flagship. I greatly value that you have believed in my capability and allowed me freedom to think for myself and make my own mistakes. You are the kindest and most goodhearted person and you have given me great advice, sometimes in form of a riddle, when it comes to science, life, economy and trimming apple trees. I have learnt a lot and will take this time with me for the future.

**Annelie**, the greatest co-supervisor ever! Thank you for having had the energy to guide me through this PhD time. For all the help, bribes, phone calls, gossips, times reading through the kappa, lifts to/from home, funny stories and great discussions. For allowing us to discuss science until the point of almost argumentation, for always treating me like your scientific equal and never not having time to talk, regardless of the subject. I have even started copying one of your many multitasking skills, to think whilst in the toilet. It would not have been the same, and definitely not as much fun, without you.

Both present and former members of the **UE group**, thank you for making the lab such a nice environment; **Erika**, thank you for having taken care of us, making sure everyone has what they need for fantastic food and stories throughout the years. Sorry for being such a messy desk neighbour. **Sofia**, for all animals that would never have been injected, urinated and analyzed if you would not have had a firm hand on us. Also, thanks for always having a friend in you for early morning saunas and extra desserts. **Isolde**, funny not-so-hot-blooded Italian, thanks for reading the thesis, all the open day-care meetings and all lovely pasta! **Karin**, for making sure we always prioritize the well-being of our animals and for being the kind, thinking-the-best-of-all-people person that the little cynic in me needs. **Ingrid** super-organized and super-calm, slowly I might even have a believer in irony in you, big thanks for always answering my never-ending IHC issues. **Philipp**, great adventurer and possessor of the best hair ever, you will become an amazing doctor and thanks for all nice chats! Thank you **Hong**, for always being in a good mood, even through pollen season and always up for dancing **Lars**, for being so kind and for all the help in the first years of my PhD and **Christine** for filling up the silence with your good humoured discussions. Thanks **Manuel**, for all help with immunology and **Sebastian**, for always being up for scientific thinking and all the incredible lyrics and scones. **Anna**, Super-yoga girl, maybe you will start the UE yoga group soon? Also, **Benjamin**, the new talkative and singing member of the group, and **Gizella**, super that you joined us both, and extra thanks to you for fixing absolutely everything, specially with this defence. And last but not least, **Hanna**, 1/3 of little girls, my PhD fellow and partner in crime of endless fikas, dinners and glasses of wine (pre-kid). Thanks for being a friend both in and out of the lab and introducing me to pole!

Also, former members of UE group that helped me in the beginning of my PhD, Maarten, Xun and Monika thank you. Of course, the new and improved zen-**Carolina**, the lab has definitely been a lot quieter since you left. Miss your spirit and never-ending optimism and scientific super-drive. Thanks for convincing both Ulf and me, that I should stay;) )

Big thanks to all the groups of the vascular biology corridor, for brining life to the corridor and for the great environment. Kind **Daniel**, thanks for all your help with the pancreas and for

making us laugh (and shake our heads) with your provocative statements. Also big thanks to all members of your ever increasing group Angieszka, Frank, Joanna and Mirela for great lab meetings. Super hardworking Sumppan and bike-friend, **Lars**, and all of your members, Mikchail, Yi and Yixin. Thank you **Linda**, for allowing me to pick your brain with silly questions and Christine, my partner in the big RNAcope success! Thanks **Guillem**, for great discussion on metabolism and everything in between. Also thanks to Tian, Jon-wook and Marion for all help and great environment. Thanks **Johan** for bringing great science and fun into the lab, together with Hassan and Husein. Josefin for great collaboration and never ending optimism. Special thanks go to Aranzazu for taking care of the espresso machine!

Big thanks to the past and present members of the **Fuxe-team**, Jonas, Maria, Joel, Mei-Fong, Jill, Tove, Vedrana, Sandra and Azadeh for good times. Big thanks to all the members of the **Tryggvason-team**, Kalle, Anne-May and Bing and for all help with the kidney. Juha and Timo for helping me to keep my Finnish alive. Also, thanks to **Team-Jaakko** and Patricia for great collaboration. Thanks to Elisabeth for super spirit, efficiency and great staining protocols.

Also, past members of the Vascular corridor, teams Pietras and CBZ, thank you for making the first couple of years such a blast and for making sure the lab was never empty. **Kristian**, you are greatly missed with your fun boys Michael, Matteo and Nick. **Eliane**, 1/3 of little girls, thanks for your great company endless fika-breaks, friendship and showing us Kap Verde! I truly miss you up here. Also, previous members, Lotta, Pernilla, Marcela and Sara, thanks for welcoming me to the lab. **CBZ -gang**, Barbara, Maarja, Maya, Jen, Johanna, Konstantin and Radiosa for all the fun parties and discussions. Colin thanks for great scientific collaboration and for pretending that I know French. Thanks Liquin for all help with bioinformatics and Lwaki for great collaboration and dancing.

Thank you to our international collaborators in **CSL**, Andrew and Pierre for antibodies, interest in our science and great conferences. Also thanks to our collaborators down-under **Joseph Proietto** and **Sofianos Andrikopoulos** with research teams.

Also, thanks to our national collaborators **Sharon Stone-Elander**, Erik and Li for having a super machine. **Åke Sjöholm** and **Henrik Ortsäter** for great collaboration.

Finally, big thanks go to all my friends for not caring so much about science and bringing me back to earth. Special thanks go to Tina, Lia and Helena for traveling the long way across the pond so often and making sure I'm ok.

Stort tack till mina föräldrar för att ni alltid har uppmuntrat min nyfikenhet.

Till världens bästa syster Maria, med världens bästa familj, tack för all mat, kärlek och oändligt antal godis for the road. Saknar oerhört att bo granne med dig och hänga varje dag.

Slutligen, jätte tacket går till **Martin**. Tack för att du är världens snällaste man som alltid ställer upp för mig vare sig det är mat, skjuts eller famn. Älskar att nördtänka med dig och att du är min. Tack lilla **Adrian** för att du så effektivt hindrar mig från att jobba och för att du alltid välkomnar mig hem med ett vrål.

## 6 REFERENCES

- 1 [https://www.idf.org/sites/default/files/EN\\_6E\\_Atlas\\_Full\\_0.pdf](https://www.idf.org/sites/default/files/EN_6E_Atlas_Full_0.pdf).
- 2 Harvey, R. A. & Ferrier, D. R. *Lippincott's illustrated reviews : Biochemistry*. 5th edn, (Wolters Kluwer Health/Lippincott Williams & Wilkins, 2011).
- 3 Lillioja, S. *et al.* Impaired glucose tolerance as a disorder of insulin action. Longitudinal and cross-sectional studies in Pima Indians. *The New England journal of medicine* **318**, 1217-1225, doi:10.1056/NEJM198805123181901 (1988).
- 4 Erdmann, J. *et al.* Disturbances of basal and postprandial insulin secretion and clearance in obese patients with type 2 diabetes mellitus. *Hormone and metabolic research = Hormon- und Stoffwechselforschung = Hormones et metabolisme* **44**, 60-69, doi:10.1055/s-0031-1295414 (2012).
- 5 Gastaldelli, A. *et al.* Beta-cell dysfunction and glucose intolerance: results from the San Antonio metabolism (SAM) study. *Diabetologia* **47**, 31-39, doi:10.1007/s00125-003-1263-9 (2004).
- 6 Unger, R. H. Lipotoxic diseases. *Annual review of medicine* **53**, 319-336, doi:10.1146/annurev.med.53.082901.104057 (2002).
- 7 Park, S. Y. *et al.* Unraveling the temporal pattern of diet-induced insulin resistance in individual organs and cardiac dysfunction in C57BL/6 mice. *Diabetes* **54**, 3530-3540 (2005).
- 8 Ahmadian, M., Duncan, R. E. & Sul, H. S. The skinny on fat: lipolysis and fatty acid utilization in adipocytes. *Trends in endocrinology and metabolism: TEM* **20**, 424-428, doi:10.1016/j.tem.2009.06.002 (2009).
- 9 Berk, P. D. *et al.* Uptake of long chain free fatty acids is selectively up-regulated in adipocytes of Zucker rats with genetic obesity and non-insulin-dependent diabetes mellitus. *The Journal of biological chemistry* **272**, 8830-8835 (1997).
- 10 Flamment, M., Hajdouch, E., Ferre, P. & Foufelle, F. New insights into ER stress-induced insulin resistance. *Trends in endocrinology and metabolism: TEM* **23**, 381-390, doi:10.1016/j.tem.2012.06.003 (2012).
- 11 <http://www.yourcancertoday.com/Cancers/Pancreatic-Cancer/44>.
- 12 <https://www-s.acm.illinois.edu/sigbio/project/digestive/middle/liver.html>.
- 13 <https://www.aic.cuhk.edu.hk/web8/Muscle.htm>.
- 14 Ouchi, N., Parker, J. L., Lugus, J. J. & Walsh, K. Adipokines in inflammation and metabolic disease. *Nature reviews. Immunology* **11**, 85-97, doi:10.1038/nri2921 (2011).
- 15 Welsh, G. I. *et al.* Insulin signaling to the glomerular podocyte is critical for normal kidney function. *Cell metabolism* **12**, 329-340, doi:10.1016/j.cmet.2010.08.015 (2010).
- 16 Choi, C. S. *et al.* Paradoxical effects of increased expression of PGC-1alpha on muscle mitochondrial function and insulin-stimulated muscle glucose metabolism. *Proceedings of the National Academy of Sciences of the United States of America* **105**, 19926-19931, doi:10.1073/pnas.0810339105 (2008).
- 17 Duncan, E. R. *et al.* Effect of endothelium-specific insulin resistance on endothelial function in vivo. *Diabetes* **57**, 3307-3314, doi:10.2337/db07-1111 (2008).
- 18 Kubota, T. *et al.* Impaired insulin signaling in endothelial cells reduces insulin-induced glucose uptake by skeletal muscle. *Cell metabolism* **13**, 294-307, doi:10.1016/j.cmet.2011.01.018 (2011).
- 19 Newsholme, P. *et al.* Diabetes associated cell stress and dysfunction: role of mitochondrial and non-mitochondrial ROS production and activity. *The Journal of physiology* **583**, 9-24, doi:10.1113/jphysiol.2007.135871 (2007).
- 20 Del Guerra, S. *et al.* Functional and molecular defects of pancreatic islets in human type 2 diabetes. *Diabetes* **54**, 727-735 (2005).
- 21 Lupi, R. *et al.* Insulin secretion defects of human type 2 diabetic islets are corrected in vitro by a new reactive oxygen species scavenger. *Diabetes & metabolism* **33**, 340-345, doi:10.1016/j.diabet.2007.03.005 (2007).
- 22 Marchetti, P. *et al.* The endoplasmic reticulum in pancreatic beta cells of type 2 diabetes patients. *Diabetologia* **50**, 2486-2494, doi:10.1007/s00125-007-0816-8 (2007).
- 23 Samuel, V. T. & Shulman, G. I. Mechanisms for insulin resistance: common threads and missing links. *Cell* **148**, 852-871, doi:10.1016/j.cell.2012.02.017 (2012).
- 24 Marshall, S., Garvey, W. T. & Traxinger, R. R. New insights into the metabolic regulation of insulin action and insulin resistance: role of glucose and amino acids. *FASEB journal : official publication of the Federation of American Societies for Experimental Biology* **5**, 3031-3036 (1991).
- 25 Kurowski, T. G. *et al.* Hyperglycemia inhibits insulin activation of Akt/protein kinase B but not phosphatidylinositol 3-kinase in rat skeletal muscle. *Diabetes* **48**, 658-663 (1999).
- 26 Nelson, B. A., Robinson, K. A. & Buse, M. G. Defective Akt activation is associated with glucose- but not glucosamine-induced insulin resistance. *American journal of physiology. Endocrinology and metabolism* **282**, E497-506, doi:10.1152/ajpendo.00438.2001 (2002).
- 27 Buse, M. G. Hexosamines, insulin resistance, and the complications of diabetes: current status. *American journal of physiology. Endocrinology and metabolism* **290**, E1-E8, doi:10.1152/ajpendo.00329.2005 (2006).
- 28 Action to Control Cardiovascular Risk in Diabetes Study, G. *et al.* Effects of intensive glucose lowering in type 2 diabetes. *The New England journal of medicine* **358**, 2545-2559, doi:10.1056/NEJMoa0802743 (2008).
- 29 Miller, M. E. *et al.* Effects of randomization to intensive glucose control on adverse events, cardiovascular disease, and mortality in older versus younger adults in the ACCORD Trial. *Diabetes care* **37**, 634-643, doi:10.2337/dc13-1545 (2014).
- 30 Muoio, D. M. & Newgard, C. B. Obesity-related derangements in metabolic regulation. *Annual review of biochemistry* **75**, 367-401, doi:10.1146/annurev.biochem.75.103004.142512 (2006).
- 31 Samuel, V. T. *et al.* Fasting hyperglycemia is not associated with increased expression of PEPCK or G6Pc in patients with Type 2 Diabetes. *Proceedings of the National Academy of Sciences of the United States of America* **106**, 12121-12126, doi:10.1073/pnas.0812547106 (2009).
- 32 Samuel, V. T., Petersen, K. F. & Shulman, G. I. Lipid-induced insulin resistance: unravelling the mechanism. *Lancet* **375**, 2267-2277, doi:10.1016/S0140-6736(10)60408-4 (2010).
- 33 Campbell, R. K. Type 2 diabetes: where we are today: an overview of disease burden, current treatments, and treatment strategies. *Journal of the American Pharmacists Association : JAPhA* **49 Suppl 1**, S3-9, doi:10.1331/JAPhA.2009.09077 (2009).
- 34 Wang, M. Y. *et al.* Adipogenic capacity and the susceptibility to type 2 diabetes and metabolic syndrome. *Proceedings of the National Academy of Sciences of the United States of America* **105**, 6139-6144, doi:10.1073/pnas.0801981105 (2008).
- 35 Krotkiewski, M., Bjorntorp, P., Sjostrom, L. & Smith, U. Impact of obesity on metabolism in men and women. Importance of regional adipose tissue distribution. *The Journal of clinical investigation* **72**, 1150-1162, doi:10.1172/JCI11040 (1983).
- 36 Krssak, M. *et al.* Intramuscular glycogen and intramyocellular lipid utilization during prolonged exercise and recovery in man: a <sup>13</sup>C and <sup>1</sup>H nuclear magnetic resonance spectroscopy study. *The Journal of clinical endocrinology and metabolism* **85**, 748-754, doi:10.1210/jcem.85.2.6354 (2000).
- 37 Clerk, L. H., Rattigan, S. & Clark, M. G. Lipid infusion impairs physiologic insulin-mediated capillary recruitment and muscle glucose uptake in vivo. *Diabetes* **51**, 1138-1145 (2002).

- 38 Krssak, M. *et al.* Intramyocellular lipid concentrations are correlated with insulin sensitivity in humans: a <sup>1</sup>H NMR spectroscopy study. *Diabetologia* **42**, 113-116, doi:10.1007/s001250051123 (1999).
- 39 Liu, Z., Liu, J., Jahn, L. A., Fowler, D. E. & Barrett, E. J. Infusing lipid raises plasma free fatty acids and induces insulin resistance in muscle microvasculature. *The Journal of clinical endocrinology and metabolism* **94**, 3543-3549, doi:10.1210/jc.2009-0027 (2009).
- 40 Liu, J. *et al.* Free fatty acids induce insulin resistance in both cardiac and skeletal muscle microvasculature in humans. *The Journal of clinical endocrinology and metabolism* **96**, 438-446, doi:10.1210/jc.2010-1174 (2011).
- 41 Toledo, F. G. *et al.* Mitochondrial capacity in skeletal muscle is not stimulated by weight loss despite increases in insulin action and decreases in intramyocellular lipid content. *Diabetes* **57**, 987-994, doi:10.2337/db07-1429 (2008).
- 42 Bachmann, O. P. *et al.* Effects of intravenous and dietary lipid challenge on intramyocellular lipid content and the relation with insulin sensitivity in humans. *Diabetes* **50**, 2579-2584 (2001).
- 43 Kim, J. Y. *et al.* Obesity-associated improvements in metabolic profile through expansion of adipose tissue. *The Journal of clinical investigation* **117**, 2621-2637, doi:10.1172/JCI31021 (2007).
- 44 Herranz, P., de Lucas, R., Perez-España, L. & Mayor, M. Lipodystrophy syndromes. *Dermatologic clinics* **26**, 569-578, ix, doi:10.1016/j.det.2008.05.004 (2008).
- 45 Neeland, I. J. *et al.* Dysfunctional adiposity and the risk of prediabetes and type 2 diabetes in obese adults. *Jama* **308**, 1150-1159, doi:10.1001/2012.jama.11132 (2012).
- 46 Gustafson, B. & Smith, U. The WNT inhibitor Dickkopf 1 and bone morphogenetic protein 4 rescue adipogenesis in hypertrophic obesity in humans. *Diabetes* **61**, 1217-1224, doi:10.2337/db11-1419 (2012).
- 47 Schmitz-Peiffer, C. *et al.* Alterations in the expression and cellular localization of protein kinase C isozymes epsilon and theta are associated with insulin resistance in skeletal muscle of the high-fat-fed rat. *Diabetes* **46**, 169-178 (1997).
- 48 Stratford, S., Hoehn, K. L., Liu, F. & Summers, S. A. Regulation of insulin action by ceramide: dual mechanisms linking ceramide accumulation to the inhibition of Akt/protein kinase B. *The Journal of biological chemistry* **279**, 36608-36615, doi:10.1074/jbc.M406499200 (2004).
- 49 Ussher, J. R. *et al.* Inhibition of de novo ceramide synthesis reverses diet-induced insulin resistance and enhances whole-body oxygen consumption. *Diabetes* **59**, 2453-2464, doi:10.2337/db09-1293 (2010).
- 50 Blouin, C. M. *et al.* Plasma membrane subdomain compartmentalization contributes to distinct mechanisms of ceramide action on insulin signaling. *Diabetes* **59**, 600-610, doi:10.2337/db09-0897 (2010).
- 51 Torres-Leal, F. L., Fonseca-Alaniz, M. H., Rogero, M. M. & Tirapegui, J. The role of inflamed adipose tissue in the insulin resistance. *Cell biochemistry and function* **28**, 623-631, doi:10.1002/cbf.1706 (2010).
- 52 Hotamisligil, G. S., Arner, P., Caro, J. F., Atkinson, R. L. & Spiegelman, B. M. Increased adipose tissue expression of tumor necrosis factor-alpha in human obesity and insulin resistance. *The Journal of clinical investigation* **95**, 2409-2415, doi:10.1172/JCI117936 (1995).
- 53 Kern, P. A. *et al.* The expression of tumor necrosis factor in human adipose tissue. Regulation by obesity, weight loss, and relationship to lipoprotein lipase. *The Journal of clinical investigation* **95**, 2111-2119, doi:10.1172/JCI117899 (1995).
- 54 Kawakami, M. *et al.* Human recombinant TNF suppresses lipoprotein lipase activity and stimulates lipolysis in 3T3-L1 cells. *Journal of biochemistry* **101**, 331-338 (1987).
- 55 Ranjit, S. *et al.* Regulation of fat specific protein 27 by isoproterenol and TNF-alpha to control lipolysis in murine adipocytes. *Journal of lipid research* **52**, 221-236, doi:10.1194/jlr.M008771 (2011).
- 56 Ozes, O. N. *et al.* A phosphatidylinositol 3-kinase/Akt/mTOR pathway mediates and PTEN antagonizes tumor necrosis factor inhibition of insulin signaling through insulin receptor substrate-1. *Proceedings of the National Academy of Sciences of the United States of America* **98**, 4640-4645, doi:10.1073/pnas.051042298 (2001).
- 57 Mootha, V. K. *et al.* PGC-1alpha-responsive genes involved in oxidative phosphorylation are coordinately downregulated in human diabetes. *Nature genetics* **34**, 267-273, doi:10.1038/ng1180 (2003).
- 58 Tuomi, T. *et al.* The many faces of diabetes: a disease with increasing heterogeneity. *Lancet* **383**, 1084-1094, doi:10.1016/S0140-6736(13)62219-9 (2014).
- 59 Perseghin, G. *et al.* Insulin resistance, intramyocellular lipid content, and plasma adiponectin in patients with type 1 diabetes. *American journal of physiology. Endocrinology and metabolism* **285**, E1174-1181, doi:10.1152/ajpendo.00279.2003 (2003).
- 60 Patterson, C. C. *et al.* Incidence trends for childhood type 1 diabetes in Europe during 1989-2003 and predicted new cases 2005-20: a multicentre prospective registration study. *Lancet* **373**, 2027-2033, doi:10.1016/S0140-6736(09)60568-7 (2009).
- 61 Karvonen, M. *et al.* Incidence of childhood type 1 diabetes worldwide. Diabetes Mondiale (DiaMond) Project Group. *Diabetes care* **23**, 1516-1526 (2000).
- 62 Hamman, R. F. *et al.* The SEARCH for Diabetes in Youth study: rationale, findings, and future directions. *Diabetes care* **37**, 3336-3344, doi:10.2337/dc14-0574 (2014).
- 63 Derraik, J. G. *et al.* Increasing incidence and age at diagnosis among children with type 1 diabetes mellitus over a 20-year period in Auckland (New Zealand). *PloS one* **7**, e32640, doi:10.1371/journal.pone.0032640 (2012).
- 64 Lee, J. M. Why young adults hold the key to assessing the obesity epidemic in children. *Archives of pediatrics & adolescent medicine* **162**, 682-687, doi:10.1001/archpedi.162.7.682 (2008).
- 65 de Onis, M., Blossner, M. & Borghi, E. Global prevalence and trends of overweight and obesity among preschool children. *The American journal of clinical nutrition* **92**, 1257-1264, doi:10.3945/ajcn.2010.29786 (2010).
- 66 Imperatore, G. *et al.* Projections of type 1 and type 2 diabetes burden in the U.S. population aged <20 years through 2050: dynamic modeling of incidence, mortality, and population growth. *Diabetes care* **35**, 2515-2520, doi:10.2337/dc12-0669 (2012).
- 67 Cree-Green, M. *et al.* Delayed skeletal muscle mitochondrial ADP recovery in youth with type 1 diabetes relates to muscle insulin resistance. *Diabetes* **64**, 383-392, doi:10.2337/db14-0765 (2015).
- 68 Kahn, B. B. *et al.* Expression of GLUT1 and GLUT4 glucose transporters in skeletal muscle of humans with insulin-dependent diabetes mellitus: regulatory effects of metabolic factors. *The Journal of clinical endocrinology and metabolism* **74**, 1101-1109, doi:10.1210/jcem.74.5.1569156 (1992).
- 69 Yki-Jarvinen, H. *et al.* Site of insulin resistance in type 1 diabetes: insulin-mediated glucose disposal in vivo in relation to insulin binding and action in adipocytes in vitro. *The Journal of clinical endocrinology and metabolism* **59**, 1183-1192, doi:10.1210/jcem-59-6-1183 (1984).
- 70 Regnell, S. E. & Lernmark, A. Hepatic steatosis in type 1 diabetes. *The review of diabetic studies : RDS* **8**, 454-467, doi:10.1900/RDS.2011.8.454 (2011).
- 71 Lassenius, M. I. *et al.* Patients with type 1 diabetes show signs of vascular dysfunction in response to multiple high-fat meals. *Nutrition & metabolism* **11**, 28, doi:10.1186/1743-7075-11-28 (2014).
- 72 Heptulla, R. A. *et al.* In situ evidence that peripheral insulin resistance in adolescents with poorly controlled type 1 diabetes is associated with impaired suppression of lipolysis: a microdialysis study. *Pediatric research* **53**, 830-835, doi:10.1203/01.PDR.0000059552.08913.B7 (2003).



- 73 Kuramoto, K. *et al.* Deficiency of a lipid droplet protein, perilipin 5, suppresses myocardial lipid accumulation, thereby preventing type 1 diabetes-induced heart malfunction. *Molecular and cellular biology* **34**, 2721-2731, doi:10.1128/MCB.00133-14 (2014).
- 74 Lote, C. J. & SpringerLink (Online service). 1 online resource. (Springer New York, New York, NY, 2012).
- 75 Taal, M. W., Brenner, B. M. & Rector, F. C. 1 online resource (2 v. (xxviii, 2868, I2869 p.)) (Elsevier/Saunders, Philadelphia, PA, 2012).
- 76 [http://www.kidney pathology.com/English\\_version/Tutorial\\_index.html](http://www.kidney pathology.com/English_version/Tutorial_index.html).
- 77 Haraldsson, B., Nystrom, J. & Deen, W. M. Properties of the glomerular barrier and mechanisms of proteinuria. *Physiological reviews* **88**, 451-487, doi:10.1152/physrev.00055.2006 (2008).
- 78 Hjalmarsson, C., Johansson, B. R. & Haraldsson, B. Electron microscopic evaluation of the endothelial surface layer of glomerular capillaries. *Microvascular research* **67**, 9-17 (2004).
- 79 Dane, M. J. *et al.* Glomerular endothelial surface layer acts as a barrier against albumin filtration. *The American journal of pathology* **182**, 1532-1540, doi:10.1016/j.ajpath.2013.01.049 (2013).
- 80 Miner, J. H. Glomerular basement membrane composition and the filtration barrier. *Pediatric nephrology* **26**, 1413-1417, doi:10.1007/s00467-011-1785-1 (2011).
- 81 Suh, J. H. & Miner, J. H. The glomerular basement membrane as a barrier to albumin. *Nature reviews. Nephrology* **9**, 470-477, doi:10.1038/nrneph.2013.109 (2013).
- 82 Rodewald, R. & Karnovsky, M. J. Porous substructure of the glomerular slit diaphragm in the rat and mouse. *The Journal of cell biology* **60**, 423-433 (1974).
- 83 Patrakka, J. & Tryggvason, K. New insights into the role of podocytes in proteinuria. *Nature reviews. Nephrology* **5**, 463-468, doi:10.1038/nrneph.2009.108 (2009).
- 84 Patrakka, J. & Tryggvason, K. Molecular make-up of the glomerular filtration barrier. *Biochemical and biophysical research communications* **396**, 164-169, doi:10.1016/j.bbrc.2010.04.069 (2010).
- 85 Viberti, G. C. *et al.* Microalbuminuria as a predictor of clinical nephropathy in insulin-dependent diabetes mellitus. *Lancet* **1**, 1430-1432 (1982).
- 86 Molitch, M. E. *et al.* Development and progression of renal insufficiency with and without albuminuria in adults with type 1 diabetes in the diabetes control and complications trial and the epidemiology of diabetes interventions and complications study. *Diabetes care* **33**, 1536-1543, doi:10.2337/dc09-1098 (2010).
- 87 Kramer, A. *et al.* An update on renal replacement therapy in Europe: ERA-EDTA Registry data from 1997 to 2006. *Nephrology, dialysis, transplantation : official publication of the European Dialysis and Transplant Association - European Renal Association* **24**, 3557-3566, doi:10.1093/ndt/gfp519 (2009).
- 88 Ritz, E., Rychlik, I., Locatelli, F. & Halimi, S. End-stage renal failure in type 2 diabetes: A medical catastrophe of worldwide dimensions. *American journal of kidney diseases : the official journal of the National Kidney Foundation* **34**, 795-808, doi:10.1016/S0272-6386(99)70035-1 (1999).
- 89 Fioretto, P. & Mauer, M. Histopathology of diabetic nephropathy. *Seminars in nephrology* **27**, 195-207, doi:10.1016/j.semnephrol.2007.01.012 (2007).
- 90 Kimmelstiel, P. & Wilson, C. Intercapillary Lesions in the Glomeruli of the Kidney. *The American journal of pathology* **12**, 83-98 87 (1936).
- 91 Van Buren, P. N. & Toto, R. Hypertension in diabetic nephropathy: epidemiology, mechanisms, and management. *Advances in chronic kidney disease* **18**, 28-41, doi:10.1053/j.ackd.2010.10.003 (2011).
- 92 Bader, R. *et al.* Structure and function of the kidney in diabetic glomerulosclerosis. Correlations between morphological and functional parameters. *Pathology, research and practice* **167**, 204-216, doi:10.1016/S0344-0338(80)80051-3 (1980).
- 93 Magri, C. J. & Fava, S. The role of tubular injury in diabetic nephropathy. *European journal of internal medicine* **20**, 551-555, doi:10.1016/j.ejim.2008.12.012 (2009).
- 94 Betz, B. & Conway, B. R. Recent advances in animal models of diabetic nephropathy. *Nephron. Experimental nephrology* **126**, 191-195, doi:10.1159/000363300 (2014).
- 95 Brosius, F. C., 3rd & Alpers, C. E. New targets for treatment of diabetic nephropathy: what we have learned from animal models. *Current opinion in nephrology and hypertension* **22**, 17-25, doi:10.1097/MNH.0b013e32835b3766 (2013).
- 96 Nadarajah, R. *et al.* Podocyte-specific overexpression of human angiotensin-converting enzyme 2 attenuates diabetic nephropathy in mice. *Kidney international* **82**, 292-303, doi:10.1038/ki.2012.83 (2012).
- 97 Shih, N. Y. *et al.* Congenital nephrotic syndrome in mice lacking CD2-associated protein. *Science* **286**, 312-315 (1999).
- 98 Kestila, M. *et al.* Positionally cloned gene for a novel glomerular protein--nephrin--is mutated in congenital nephrotic syndrome. *Molecular cell* **1**, 575-582 (1998).
- 99 Koziell, A. *et al.* Genotype/phenotype correlations of NPHS1 and NPHS2 mutations in nephrotic syndrome advocate a functional inter-relationship in glomerular filtration. *Human molecular genetics* **11**, 379-388 (2002).
- 100 White, K. E. *et al.* Podocyte number in normotensive type 1 diabetic patients with albuminuria. *Diabetes* **51**, 3083-3089 (2002).
- 101 Steffes, M. W., Schmidt, D., McCrery, R., Basgen, J. M. & International Diabetic Nephropathy Study, G. Glomerular cell number in normal subjects and in type 1 diabetic patients. *Kidney international* **59**, 2104-2113, doi:10.1046/j.1523-1755.2001.00725.x (2001).
- 102 Pagtalunan, M. E. *et al.* Podocyte loss and progressive glomerular injury in type II diabetes. *The Journal of clinical investigation* **99**, 342-348, doi:10.1172/JCI119163 (1997).
- 103 Toyoda, M., Najafian, B., Kim, Y., Caramori, M. L. & Mauer, M. Podocyte detachment and reduced glomerular capillary endothelial fenestration in human type 1 diabetic nephropathy. *Diabetes* **56**, 2155-2160, doi:10.2337/db07-0019 (2007).
- 104 Verzola, D. *et al.* Apoptosis in the kidneys of patients with type II diabetic nephropathy. *Kidney international* **72**, 1262-1272, doi:10.1038/sj.ki.5002531 (2007).
- 105 Ellis, E. N., Steffes, M. W., Chavers, B. & Mauer, S. M. Observations of glomerular epithelial cell structure in patients with type I diabetes mellitus. *Kidney international* **32**, 736-741 (1987).
- 106 Berg, U. B., Torbjornsdotter, T. B., Jaremko, G. & Thalme, B. Kidney morphological changes in relation to long-term renal function and metabolic control in adolescents with IDDM. *Diabetologia* **41**, 1047-1056, doi:10.1007/s001250051029 (1998).
- 107 Miyata, T. *et al.* Implication of an increased oxidative stress in the formation of advanced glycation end products in patients with end-stage renal failure. *Kidney international* **51**, 1170-1181 (1997).
- 108 Ziyadeh, F. N. Different roles for TGF-beta and VEGF in the pathogenesis of the cardinal features of diabetic nephropathy. *Diabetes research and clinical practice* **82 Suppl 1**, S38-41, doi:10.1016/j.diabres.2008.09.016 (2008).
- 109 Hauser, P. V., Collino, F., Bussolati, B. & Camussi, G. Nephron and endothelial injury. *Current opinion in nephrology and hypertension* **18**, 3-8, doi:10.1097/MNH.0b013e32831a4713 (2009).
- 110 Tham, D. M. *et al.* Angiotensin II injures the arterial wall causing increased aortic stiffening in apolipoprotein E-deficient mice. *American journal of physiology. Regulatory, integrative and comparative physiology* **283**, R1442-1449, doi:10.1152/ajpregu.00295.2002 (2002).

- 111 Yoshida, S., Nagase, M., Shibata, S. & Fujita, T. Podocyte injury induced by albumin overload in vivo and in vitro:  
involvement of TGF-beta and p38 MAPK. *Nephron. Experimental nephrology* **108**, e57-68, doi:10.1159/000124236 (2008).
- 112 de Boer, I. H. *et al.* Temporal trends in the prevalence of diabetic kidney disease in the United States. *Jama* **305**, 2532-2539,  
doi:10.1001/jama.2011.861 (2011).
- 113 Coca, S. G., Ismail-Beigi, F., Haq, N., Krumholz, H. M. & Parikh, C. R. Role of intensive glucose control in development of  
renal end points in type 2 diabetes mellitus: systematic review and meta-analysis intensive glucose control in type 2 diabetes.  
*Archives of internal medicine* **172**, 761-769, doi:10.1001/archinternmed.2011.2230 (2012).
- 114 Perkovic, V. *et al.* Intensive glucose control improves kidney outcomes in patients with type 2 diabetes. *Kidney international*  
**83**, 517-523, doi:10.1038/ki.2012.401 (2013).
- 115 Herman-Edelstein, M., Scherzer, P., Tobar, A., Levi, M. & Gafter, U. Altered renal lipid metabolism and renal lipid  
accumulation in human diabetic nephropathy. *Journal of lipid research* **55**, 561-572, doi:10.1194/jlr.P040501 (2014).
- 116 Merscher-Gomez, S. *et al.* Cyclodextrin protects podocytes in diabetic kidney disease. *Diabetes* **62**, 3817-3827,  
doi:10.2337/db13-0399 (2013).
- 117 Kang, H. M. *et al.* Defective fatty acid oxidation in renal tubular epithelial cells has a key role in kidney fibrosis development.  
*Nature medicine* **21**, 37-46, doi:10.1038/nm.3762 (2015).
- 118 Ujihara, N. *et al.* Association between plasma oxidized low-density lipoprotein and diabetic nephropathy. *Diabetes research  
and clinical practice* **58**, 109-114 (2002).
- 119 Jandeleit-Dahm, K. *et al.* Role of hyperlipidemia in progressive renal disease: focus on diabetic nephropathy. *Kidney  
international. Supplement* **71**, S31-36 (1999).
- 120 Cooper, M. E. *et al.* Increased renal expression of vascular endothelial growth factor (VEGF) and its receptor VEGFR-2 in  
experimental diabetes. *Diabetes* **48**, 2229-2239 (1999).
- 121 Baelde, H. J. *et al.* Reduction of VEGF-A and CTGF expression in diabetic nephropathy is associated with podocyte loss.  
*Kidney international* **71**, 637-645, doi:10.1038/sj.ki.5002101 (2007).
- 122 Eremina, V. *et al.* VEGF inhibition and renal thrombotic microangiopathy. *The New England journal of medicine* **358**, 1129-  
1136, doi:10.1056/NEJMoa0707330 (2008).
- 123 Eremina, V. *et al.* Glomerular-specific alterations of VEGF-A expression lead to distinct congenital and acquired renal  
diseases. *The Journal of clinical investigation* **111**, 707-716, doi:10.1172/JCI17423 (2003).
- 124 Coward, R. J. *et al.* The human glomerular podocyte is a novel target for insulin action. *Diabetes* **54**, 3095-3102 (2005).
- 125 Yip, J. *et al.* Insulin resistance in insulin-dependent diabetic patients with microalbuminuria. *Lancet* **342**, 883-887 (1993).
- 126 Ekstrand, A. V., Groop, P. H. & Gronhagen-Riska, C. Insulin resistance precedes microalbuminuria in patients with insulin-  
dependent diabetes mellitus. *Nephrology, dialysis, transplantation : official publication of the European Dialysis and  
Transplant Association - European Renal Association* **13**, 3079-3083 (1998).
- 127 Groop, L. *et al.* Insulin resistance, hypertension and microalbuminuria in patients with type 2 (non-insulin-dependent) diabetes  
mellitus. *Diabetologia* **36**, 642-647 (1993).
- 128 Parvanova, A. I. *et al.* Insulin resistance and microalbuminuria: a cross-sectional, case-control study of 158 patients with type  
2 diabetes and different degrees of urinary albumin excretion. *Diabetes* **55**, 1456-1462 (2006).
- 129 Tejada, T. *et al.* Failure to phosphorylate AKT in podocytes from mice with early diabetic nephropathy promotes cell death.  
*Kidney international* **73**, 1385-1393, doi:10.1038/ki.2008.109 (2008).
- 130 Lennon, R. *et al.* Saturated fatty acids induce insulin resistance in human podocytes: implications for diabetic nephropathy.  
*Nephrology, dialysis, transplantation : official publication of the European Dialysis and Transplant Association - European  
Renal Association* **24**, 3288-3296, doi:10.1093/ndt/gfp302 (2009).
- 131 Gutwein, P. *et al.* CXCL16 and oxLDL are induced in the onset of diabetic nephropathy. *Journal of cellular and molecular  
medicine* **13**, 3809-3825, doi:10.1111/j.1582-4934.2009.00761.x (2009).
- 132 Adair, T. H. *Angiogenesis*. (Morgan & Claypool Life Sciences, 2011).
- 133 Rose, C. P., Goresky, C. A. & Bach, G. G. The capillary and sarcolemmal barriers in the heart. An exploration of labeled  
water permeability. *Circulation research* **41**, 515-533 (1977).
- 134 Tschubar, F., Rose, H. & Kammermeier, H. Fatty acid transfer across the myocardial capillary wall. *Journal of molecular and  
cellular cardiology* **25**, 355-366, doi:10.1006/jmcc.1993.1042 (1993).
- 135 Van der Vusse, G. J., Glatz, J. F., Van Nieuwenhoven, F. A., Reneman, R. S. & Bassingthwaight, J. B. Transport of long-  
chain fatty acids across the muscular endothelium. *Advances in experimental medicine and biology* **441**, 181-191 (1998).
- 136 Hagberg, C. E. *et al.* Vascular endothelial growth factor B controls endothelial fatty acid uptake. *Nature* **464**, 917-921,  
doi:10.1038/nature08945 (2010).
- 137 Dallinga-Thie, G. M. *et al.* The metabolism of triglyceride-rich lipoproteins revisited: new players, new insight.  
*Atherosclerosis* **211**, 1-8, doi:10.1016/j.atherosclerosis.2009.12.027 (2010).
- 138 Olivecrona, G. & Olivecrona, T. Triglyceride lipases and atherosclerosis. *Current opinion in lipidology* **21**, 409-415,  
doi:10.1097/MOL.0b013e32833ded83 (2010).
- 139 Luiken, J. J. Sarcolemmal fatty acid uptake vs. mitochondrial beta-oxidation as target to regress cardiac insulin resistance.  
*Applied physiology, nutrition, and metabolism = Physiologie appliquee, nutrition et metabolisme* **34**, 473-480,  
doi:10.1139/H09-040 (2009).
- 140 Pohl, J., Ring, A., Hermann, T. & Stremmel, W. Role of FATP in parenchymal cell fatty acid uptake. *Biochimica et  
biophysica acta* **1686**, 1-6, doi:10.1016/j.bbailip.2004.06.004 (2004).
- 141 Doege, H. & Stahl, A. Protein-mediated fatty acid uptake: novel insights from in vivo models. *Physiology* **21**, 259-268,  
doi:10.1152/physiol.00014.2006 (2006).
- 142 Hirsch, D., Stahl, A. & Lodish, H. F. A family of fatty acid transporters conserved from mycobacterium to man. *Proceedings  
of the National Academy of Sciences of the United States of America* **95**, 8625-8629 (1998).
- 143 Gimeno, R. E. *et al.* Targeted deletion of fatty acid transport protein-4 results in early embryonic lethality. *The Journal of  
biological chemistry* **278**, 49512-49516, doi:10.1074/jbc.M309759200 (2003).
- 144 DiRusso, C. C. *et al.* Comparative biochemical studies of the murine fatty acid transport proteins (FATP) expressed in yeast.  
*The Journal of biological chemistry* **280**, 16829-16837, doi:10.1074/jbc.M409598200 (2005).
- 145 Jia, Z., Pei, Z., Maignel, D., Toomer, C. J. & Watkins, P. A. The fatty acid transport protein (FATP) family: very long chain  
acyl-CoA synthetases or solute carriers? *Journal of molecular neuroscience : MN* **33**, 25-31 (2007).
- 146 Stüttgen, E. & Ballmer-Hofer, K. Structure and function of VEGF receptors. *IUBMB life* **61**, 915-922, doi:10.1002/iub.234  
(2009).
- 147 Olsson, A. K., Dimberg, A., Kreuger, J. & Claesson-Welsh, L. VEGF receptor signalling - in control of vascular function.  
*Nature reviews. Molecular cell biology* **7**, 359-371, doi:10.1038/nrm1911 (2006).
- 148 Tammela, T., Enholm, B., Alitalo, K. & Paavonen, K. The biology of vascular endothelial growth factors. *Cardiovascular  
research* **65**, 550-563, doi:10.1016/j.cardiores.2004.12.002 (2005).
- 149 Makinen, T. *et al.* Differential binding of vascular endothelial growth factor B splice and proteolytic isoforms to neuropilin-1.  
*The Journal of biological chemistry* **274**, 21217-21222 (1999).

- 150 Olofsson, B. *et al.* Vascular endothelial growth factor B (VEGF-B) binds to VEGF receptor-1 and regulates plasminogen activator activity in endothelial cells. *Proceedings of the National Academy of Sciences of the United States of America* **95**, 11709-11714 (1998).
- 151 Li, X., Aase, K., Li, H., von Euler, G. & Eriksson, U. Isoform-specific expression of VEGF-B in normal tissues and tumors. *Growth factors* **19**, 49-59 (2001).
- 152 Olofsson, B. *et al.* Genomic organization of the mouse and human genes for vascular endothelial growth factor B (VEGF-B) and characterization of a second splice isoform. *The Journal of biological chemistry* **271**, 19310-19317 (1996).
- 153 Hagberg, C., Mehlem, A., Falkevall, A., Muhl, L. & Eriksson, U. Endothelial fatty acid transport: role of vascular endothelial growth factor B. *Physiology* **28**, 125-134, doi:10.1152/physiol.00042.2012 (2013).
- 154 Shibuya, M. & Claesson-Welsh, L. Signal transduction by VEGF receptors in regulation of angiogenesis and lymphangiogenesis. *Experimental cell research* **312**, 549-560, doi:10.1016/j.yexcr.2005.11.012 (2006).
- 155 Fong, G. H., Rossant, J., Gertsenstein, M. & Breitman, M. L. Role of the Flt-1 receptor tyrosine kinase in regulating the assembly of vascular endothelium. *Nature* **376**, 66-70, doi:10.1038/376066a0 (1995).
- 156 Breier, G., Clauss, M. & Risau, W. Coordinate expression of vascular endothelial growth factor receptor-1 (flt-1) and its ligand suggests a paracrine regulation of murine vascular development. *Developmental dynamics : an official publication of the American Association of Anatomists* **204**, 228-239, doi:10.1002/aja.1002040303 (1995).
- 157 Carmeliet, P. *et al.* Abnormal blood vessel development and lethality in embryos lacking a single VEGF allele. *Nature* **380**, 435-439, doi:10.1038/380435a0 (1996).
- 158 Hiratsuka, S., Minowa, O., Kuno, J., Noda, T. & Shibuya, M. Flt-1 lacking the tyrosine kinase domain is sufficient for normal development and angiogenesis in mice. *Proceedings of the National Academy of Sciences of the United States of America* **95**, 9349-9354 (1998).
- 159 Sawano, A., Takahashi, T., Yamaguchi, S. & Shibuya, M. The phosphorylated 1169-tyrosine containing region of flt-1 kinase (VEGFR-1) is a major binding site for PLCgamma. *Biochemical and biophysical research communications* **238**, 487-491, doi:10.1006/bbrc.1997.7327 (1997).
- 160 Malik, A. K. *et al.* Redundant roles of VEGF-B and PIGF during selective VEGF-A blockade in mice. *Blood* **107**, 550-557, doi:10.1182/blood-2005-05-2047 (2006).
- 161 Tchaikovski, V., Fellbrich, G. & Waltenberger, J. The molecular basis of VEGFR-1 signal transduction pathways in primary human monocytes. *Arteriosclerosis, thrombosis, and vascular biology* **28**, 322-328, doi:10.1161/ATVBAHA.107.158022 (2008).
- 162 Clauss, M. *et al.* The vascular endothelial growth factor receptor Flt-1 mediates biological activities. Implications for a functional role of placenta growth factor in monocyte activation and chemotaxis. *The Journal of biological chemistry* **271**, 17629-17634 (1996).
- 163 Fong, G. H., Klingensmith, J., Wood, C. R., Rossant, J. & Breitman, M. L. Regulation of flt-1 expression during mouse embryogenesis suggests a role in the establishment of vascular endothelium. *Developmental dynamics : an official publication of the American Association of Anatomists* **207**, 1-10, doi:10.1002/(SICI)1097-0177(199609)207:1<1::AID-AJA1>3.0.CO;2-M (1996).
- 164 Fragoso, R. *et al.* VEGFR-1 (FLT-1) activation modulates acute lymphoblastic leukemia localization and survival within the bone marrow, determining the onset of extramedullary disease. *Blood* **107**, 1608-1616, doi:10.1182/blood-2005-06-2530 (2006).
- 165 Satoda, M., Takagi, S., Ohta, K., Hirata, T. & Fujisawa, H. Differential expression of two cell surface proteins, neuropilin and plexin, in *Xenopus* olfactory axon subclasses. *The Journal of neuroscience : the official journal of the Society for Neuroscience* **15**, 942-955 (1995).
- 166 Bielenberg, D. R., Pettaway, C. A., Takashima, S. & Klagsbrun, M. Neuropilins in neoplasms: expression, regulation, and function. *Experimental cell research* **312**, 584-593, doi:10.1016/j.yexcr.2005.11.024 (2006).
- 167 Fantin, A. *et al.* Tissue macrophages act as cellular chaperones for vascular anastomosis downstream of VEGF-mediated endothelial tip cell induction. *Blood* **116**, 829-840, doi:10.1182/blood-2009-12-257832 (2010).
- 168 Fantin, A. *et al.* NRP1 acts cell autonomously in endothelium to promote tip cell function during sprouting angiogenesis. *Blood* **121**, 2352-2362, doi:10.1182/blood-2012-05-424713 (2013).
- 169 Prahst, C. *et al.* Neuropilin-1-VEGFR-2 complexing requires the PDZ-binding domain of neuropilin-1. *The Journal of biological chemistry* **283**, 25110-25114, doi:10.1074/jbc.C800137200 (2008).
- 170 Fantin, A. *et al.* The cytoplasmic domain of neuropilin 1 is dispensable for angiogenesis, but promotes the spatial separation of retinal arteries and veins. *Development* **138**, 4185-4191, doi:10.1242/dev.070037 (2011).
- 171 Kawasaki, T. *et al.* A requirement for neuropilin-1 in embryonic vessel formation. *Development* **126**, 4895-4902 (1999).
- 172 Li, X. *et al.* Reevaluation of the role of VEGF-B suggests a restricted role in the revascularization of the ischemic myocardium. *Arteriosclerosis, thrombosis, and vascular biology* **28**, 1614-1620, doi:10.1161/ATVBAHA.107.158725 (2008).
- 173 Nilsson, I., Shibuya, M. & Wennstrom, S. Differential activation of vascular genes by hypoxia in primary endothelial cells. *Experimental cell research* **299**, 476-485, doi:10.1016/j.yexcr.2004.06.005 (2004).
- 174 Bry, M. *et al.* Vascular endothelial growth factor-B acts as a coronary growth factor in transgenic rats without inducing angiogenesis, vascular leak, or inflammation. *Circulation* **122**, 1725-1733, doi:10.1161/CIRCULATIONAHA.110.957332 (2010).
- 175 Aase, K. *et al.* Vascular endothelial growth factor-B-deficient mice display an atrial conduction defect. *Circulation* **104**, 358-364 (2001).
- 176 Li, X. *et al.* VEGF-B: a survival, or an angiogenic factor? *Cell adhesion & migration* **3**, 322-327 (2009).
- 177 Zhang, F. *et al.* VEGF-B is dispensable for blood vessel growth but critical for their survival, and VEGF-B targeting inhibits pathological angiogenesis. *Proceedings of the National Academy of Sciences of the United States of America* **106**, 6152-6157, doi:10.1073/pnas.0813061106 (2009).
- 178 Bellomo, D. *et al.* Mice lacking the vascular endothelial growth factor-B gene (*Vegfb*) have smaller hearts, dysfunctional coronary vasculature, and impaired recovery from cardiac ischemia. *Circulation research* **86**, E29-35 (2000).
- 179 Kivela, R. *et al.* VEGF-B-induced vascular growth leads to metabolic reprogramming and ischemia resistance in the heart. *EMBO molecular medicine* **6**, 307-321, doi:10.1002/emmm.201303147 (2014).
- 180 Yang, X. *et al.* VEGF-B promotes cancer metastasis through a VEGF-A-independent mechanism and serves as a marker of poor prognosis for cancer patients. *Proceedings of the National Academy of Sciences of the United States of America* **112**, E2900-2909, doi:10.1073/pnas.1503500112 (2015).
- 181 Albrecht, I. *et al.* Suppressive effects of vascular endothelial growth factor-B on tumor growth in a mouse model of pancreatic neuroendocrine tumorigenesis. *PloS one* **5**, e14109, doi:10.1371/journal.pone.0014109 (2010).
- 182 Karpanen, T. *et al.* Overexpression of vascular endothelial growth factor-B in mouse heart alters cardiac lipid metabolism and induces myocardial hypertrophy. *Circulation research* **103**, 1018-1026, doi:10.1161/CIRCRESAHA.108.178459 (2008).

- 183 Lahteenvuo, J. E. *et al.* Vascular endothelial growth factor-B induces myocardium-specific angiogenesis and arteriogenesis  
via vascular endothelial growth factor receptor-1- and neuropilin receptor-1-dependent mechanisms. *Circulation* **119**, 845-  
856, doi:10.1161/CIRCULATIONAHA.108.816454 (2009).
- 184 Gomez-Ambrosi, J. *et al.* Gene expression profile of omental adipose tissue in human obesity. *FASEB journal : official  
publication of the Federation of American Societies for Experimental Biology* **18**, 215-217, doi:10.1096/fj.03-0591fje (2004).
- 185 Sun, C. Y., Lee, C. C., Hsieh, M. F., Chen, C. H. & Chou, K. M. Clinical association of circulating VEGF-B levels with  
hyperlipidemia and target organ damage in type 2 diabetic patients. *Journal of biological regulators and homeostatic agents*  
**28**, 225-236 (2014).
- 186 Cheng, F. *et al.* Serum vascular endothelial growth factor B is elevated in women with polycystic ovary syndrome and can be  
decreased with metformin treatment. *Clinical endocrinology*, doi:10.1111/cen.12950 (2015).
- 187 Lee, J. Y. *et al.* A genome-wide association study of a coronary artery disease risk variant. *Journal of human genetics* **58**, 120-  
126, doi:10.1038/jhg.2012.124 (2013).
- 188 Fox, C. S. *et al.* Genome-wide association to body mass index and waist circumference: the Framingham Heart Study 100K  
project. *BMC medical genetics* **8 Suppl 1**, S18, doi:10.1186/1471-2350-8-S1-S18 (2007).
- 189 Vasan, R. S. *et al.* Genome-wide association of echocardiographic dimensions, brachial artery endothelial function and  
treadmill exercise responses in the Framingham Heart Study. *BMC medical genetics* **8 Suppl 1**, S2, doi:10.1186/1471-2350-8-  
S1-S2 (2007).
- 190 Gertow, K. *et al.* Genetic and structural evaluation of fatty acid transport protein-4 in relation to markers of the insulin  
resistance syndrome. *The Journal of clinical endocrinology and metabolism* **89**, 392-399, doi:10.1210/jc.2003-030682 (2004).
- 191 Schreiber, S. N. *et al.* The estrogen-related receptor alpha (ERRalpha) functions in PPARgamma coactivator 1alpha (PGC-  
1alpha)-induced mitochondrial biogenesis. *Proceedings of the National Academy of Sciences of the United States of America*  
**101**, 6472-6477, doi:10.1073/pnas.0308686101 (2004).
- 192 Puigserver, P. *et al.* Activation of PPARgamma coactivator-1 through transcription factor docking. *Science* **286**, 1368-1371  
(1999).
- 193 Wu, Z. *et al.* Mechanisms controlling mitochondrial biogenesis and respiration through the thermogenic coactivator PGC-1.  
*Cell* **98**, 115-124, doi:10.1016/S0092-8674(00)80611-X (1999).
- 194 Puigserver, P. *et al.* A cold-inducible coactivator of nuclear receptors linked to adaptive thermogenesis. *Cell* **92**, 829-839  
(1998).
- 195 Fernandez-Marcos, P. J. & Auwerx, J. Regulation of PGC-1alpha, a nodal regulator of mitochondrial biogenesis. *The  
American journal of clinical nutrition* **93**, 884S-890, doi:10.3945/ajcn.110.001917 (2011).
- 196 Chinsomboon, J. *et al.* The transcriptional coactivator PGC-1alpha mediates exercise-induced angiogenesis in skeletal muscle.  
*Proceedings of the National Academy of Sciences of the United States of America* **106**, 21401-21406,  
doi:10.1073/pnas.0909131106 (2009).
- 197 Zhang, Y. *et al.* Alternative mRNA splicing produces a novel biologically active short isoform of PGC-1alpha. *The Journal of  
biological chemistry* **284**, 32813-32826, doi:10.1074/jbc.M109.037556 (2009).
- 198 Ruas, J. L. *et al.* A PGC-1alpha isoform induced by resistance training regulates skeletal muscle hypertrophy. *Cell* **151**, 1319-  
1331, doi:10.1016/j.cell.2012.10.050 (2012).
- 199 Vega, R. B., Huss, J. M. & Kelly, D. P. The coactivator PGC-1 cooperates with peroxisome proliferator-activated receptor  
alpha in transcriptional control of nuclear genes encoding mitochondrial fatty acid oxidation enzymes. *Molecular and cellular  
biology* **20**, 1868-1876 (2000).
- 200 Duncan, J. G. Peroxisome proliferator activated receptor-alpha (PPARalpha) and PPAR gamma coactivator-1alpha (PGC-  
1alpha) regulation of cardiac metabolism in diabetes. *Pediatric cardiology* **32**, 323-328, doi:10.1007/s00246-011-9889-8  
(2011).
- 201 Espinoza, D. O., Boros, L. G., Crunkhorn, S., Gami, H. & Patti, M. E. Dual modulation of both lipid oxidation and synthesis  
by peroxisome proliferator-activated receptor-gamma coactivator-1alpha and -1beta in cultured myotubes. *FASEB journal :  
official publication of the Federation of American Societies for Experimental Biology* **24**, 1003-1014, doi:10.1096/fj.09-  
133728 (2010).
- 202 Lin, J. *et al.* Transcriptional co-activator PGC-1 alpha drives the formation of slow-twitch muscle fibres. *Nature* **418**, 797-801,  
doi:10.1038/nature00904 (2002).
- 203 Summermatter, S., Baum, O., Santos, G., Hoppeler, H. & Handschin, C. Peroxisome proliferator-activated receptor {gamma}  
coactivator 1{alpha} (PGC-1{alpha}) promotes skeletal muscle lipid refueling in vivo by activating de novo lipogenesis and  
the pentose phosphate pathway. *The Journal of biological chemistry* **285**, 32793-32800, doi:10.1074/jbc.M110.145995 (2010).
- 204 Lowell, B. B. & Shulman, G. I. Mitochondrial dysfunction and type 2 diabetes. *Science* **307**, 384-387,  
doi:10.1126/science.1104343 (2005).
- 205 Mootha, V. K. *et al.* Erralpha and Gabpa/b specify PGC-1alpha-dependent oxidative phosphorylation gene expression that is  
altered in diabetic muscle. *Proceedings of the National Academy of Sciences of the United States of America* **101**, 6570-6575,  
doi:10.1073/pnas.0401401101 (2004).
- 206 Patti, M. E. *et al.* Coordinated reduction of genes of oxidative metabolism in humans with insulin resistance and diabetes:  
Potential role of PGC1 and NRF1. *Proceedings of the National Academy of Sciences of the United States of America* **100**,  
8466-8471, doi:10.1073/pnas.1032913100 (2003).
- 207 Michael, L. F. *et al.* Restoration of insulin-sensitive glucose transporter (GLUT4) gene expression in muscle cells by the  
transcriptional coactivator PGC-1. *Proceedings of the National Academy of Sciences of the United States of America* **98**, 3820-  
3825, doi:10.1073/pnas.061035098 (2001).
- 208 Leone, T. C. *et al.* PGC-1alpha deficiency causes multi-system energy metabolic derangements: muscle dysfunction,  
abnormal weight control and hepatic steatosis. *PLoS biology* **3**, e101, doi:10.1371/journal.pbio.0030101 (2005).
- 209 Handschin, C. *et al.* Skeletal muscle fiber-type switching, exercise intolerance, and myopathy in PGC-1alpha muscle-specific  
knock-out animals. *The Journal of biological chemistry* **282**, 30014-30021, doi:10.1074/jbc.M704817200 (2007).
- 210 Gomez-Perez, Y., Capllonch-Amer, G., Gianotti, M., Llado, I. & Proenza, A. M. Long-term high-fat-diet feeding induces  
skeletal muscle mitochondrial biogenesis in rats in a sex-dependent and muscle-type specific manner. *Nutrition & metabolism*  
**9**, 15, doi:10.1186/1743-7075-9-15 (2012).
- 211 Samocha-Bonet, D. *et al.* Overfeeding reduces insulin sensitivity and increases oxidative stress, without altering markers of  
mitochondrial content and function in humans. *PLoS one* **7**, e36320, doi:10.1371/journal.pone.0036320 (2012).
- 212 Bernal-Mizrachi, C. *et al.* Dexamethasone induction of hypertension and diabetes is PPAR-alpha dependent in LDL receptor-  
null mice. *Nature medicine* **9**, 1069-1075, doi:10.1038/nm898 (2003).
- 213 Buchanan, J. *et al.* Reduced cardiac efficiency and altered substrate metabolism precedes the onset of hyperglycemia and  
contractile dysfunction in two mouse models of insulin resistance and obesity. *Endocrinology* **146**, 5341-5349,  
doi:10.1210/en.2005-0938 (2005).

- 214 Duncan, J. G., Fong, J. L., Medeiros, D. M., Finck, B. N. & Kelly, D. P. Insulin-resistant heart exhibits a mitochondrial  
biogenic response driven by the peroxisome proliferator-activated receptor-alpha/PGC-1alpha gene regulatory pathway.  
*Circulation* **115**, 909-917, doi:10.1161/CIRCULATIONAHA.106.662296 (2007).
- 215 Arany, Z. *et al.* HIF-independent regulation of VEGF and angiogenesis by the transcriptional coactivator PGC-1alpha. *Nature*  
**451**, 1008-1012, doi:10.1038/nature06613 (2008).
- 216 Patten, I. S. *et al.* Cardiac angiogenic imbalance leads to peripartum cardiomyopathy. *Nature* **485**, 333-338,  
doi:10.1038/nature11040 (2012).
- 217 Tabit, C. E., Chung, W. B., Hamburg, N. M. & Vita, J. A. Endothelial dysfunction in diabetes mellitus: molecular mechanisms  
and clinical implications. *Reviews in endocrine & metabolic disorders* **11**, 61-74, doi:10.1007/s11154-010-9134-4 (2010).
- 218 Cosentino, F. & Luscher, T. F. Endothelial dysfunction in diabetes mellitus. *Journal of cardiovascular pharmacology* **32**  
**Suppl 3**, S54-61 (1998).
- 219 Sawada, N. *et al.* Endothelial PGC-1alpha mediates vascular dysfunction in diabetes. *Cell metabolism* **19**, 246-258,  
doi:10.1016/j.cmet.2013.12.014 (2014).
- 220 Bostrom, P. *et al.* A PGC1-alpha-dependent myokine that drives brown-fat-like development of white fat and thermogenesis.  
*Nature* **481**, 463-468, doi:10.1038/nature10777 (2012).
- 221 Chan, M. C. & Arany, Z. The many roles of PGC-1alpha in muscle--recent developments. *Metabolism: clinical and*  
*experimental* **63**, 441-451, doi:10.1016/j.metabol.2014.01.006 (2014).
- 222 Dijkstra, M. H. *et al.* Lack of cardiac and high-fat diet induced metabolic phenotypes in two independent strains of Vegf-b  
knockout mice. *Scientific reports* **4**, 6238, doi:10.1038/srep06238 (2014).
- 223 Puff, R. *et al.* Reduced proliferation and a high apoptotic frequency of pancreatic beta cells contribute to genetically-  
determined diabetes susceptibility of db/db BKS mice. *Hormone and metabolic research = Hormon- und*  
*Stoffwechselforschung = Hormones et metabolisme* **43**, 306-311, doi:10.1055/s-0031-1271817 (2011).
- 224 Nakamura, T. *et al.* Pioglitazone reduces urinary podocyte excretion in type 2 diabetes patients with microalbuminuria.  
*Metabolism: clinical and experimental* **50**, 1193-1196, doi:10.1053/meta.2001.26703 (2001).
- 225 Saltiel, A. R. & Olefsky, J. M. Thiazolidinediones in the treatment of insulin resistance and type II diabetes. *Diabetes* **45**,  
1661-1669 (1996).
- 226 Martens, F. M., Visseren, F. L., Lemay, J., de Koning, E. J. & Rabelink, T. J. Metabolic and additional vascular effects of  
thiazolidinediones. *Drugs* **62**, 1463-1480 (2002).
- 227 Lago, R. M., Singh, P. P. & Nesto, R. W. Congestive heart failure and cardiovascular death in patients with prediabetes and  
type 2 diabetes given thiazolidinediones: a meta-analysis of randomised clinical trials. *Lancet* **370**, 1129-1136,  
doi:10.1016/S0140-6736(07)61514-1 (2007).
- 228 Avogaro, A. *et al.* Which is the eligible patient to be treated with pioglitazone? The expert view. *Journal of endocrinological*  
*investigation* **34**, 781-787, doi:10.1007/BF03346725 (2011).