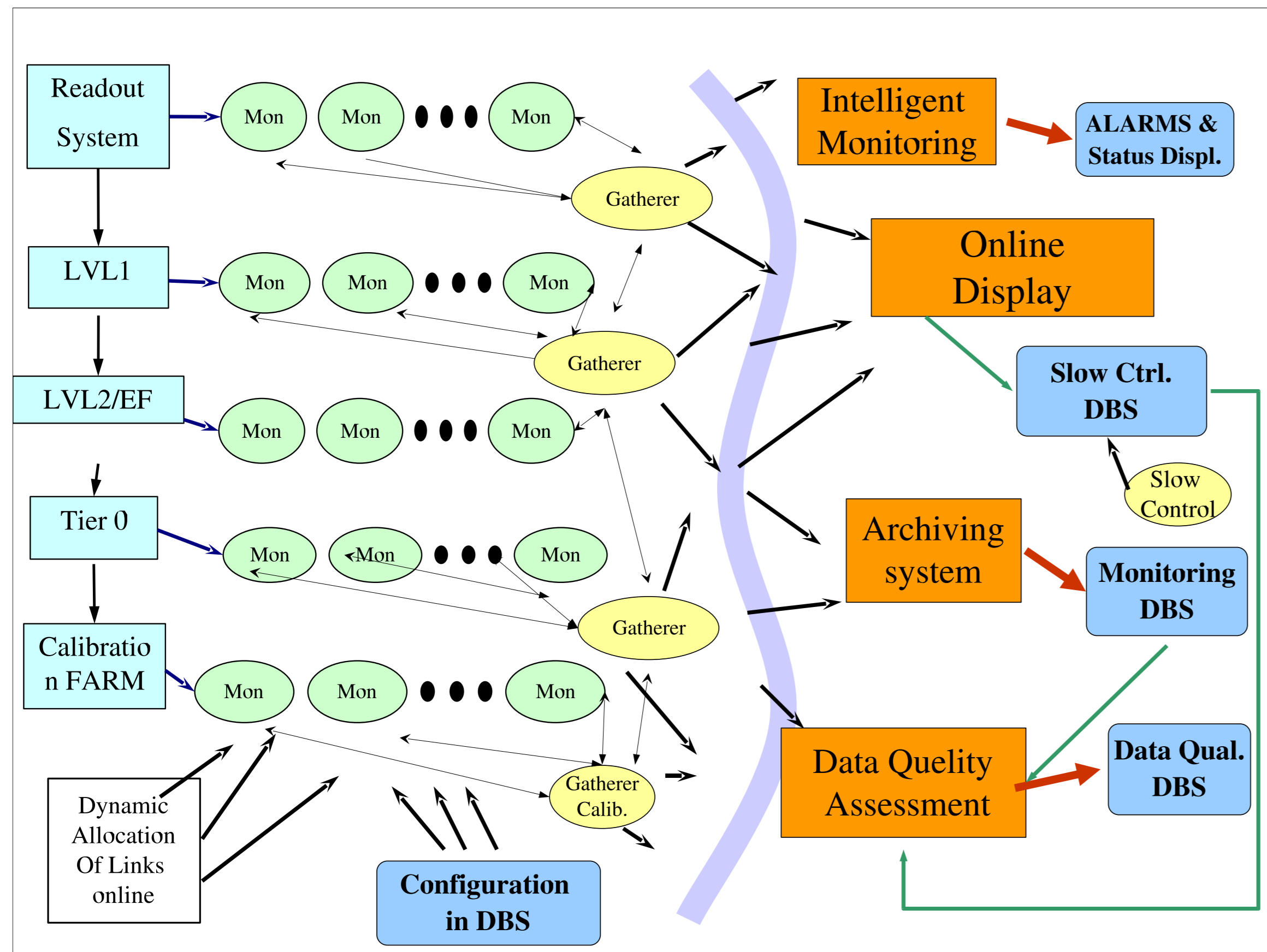


Portable Gathering System for Online

S. Armstrong^a, A. dosAnjos^r, J.T.M. Baines^c, C.P. Bee^d, M. Biglietti^e, J.A. Bogaerts^f, V. Boisvert^f, M. Bosman^g, B. Caron^h, P. Casado^g, G. Cataldiⁱ, D. Cavalli^j, M. Cervetto^k, M. Grothe^l, S. Kabana^l, A. Khomich^s, G. Kilvington^m, N. Konstantinidis^s, A. Kootz^l, A. Lowe^m, L. Luminari^p, T. Maeno^q, J. Masik^q, A. Di Mattia^p, C. Meessen^d, A.G. Mello^b, Z. Qian^d, S. Resconi^j, S. Rosati^f, C. Sanchez^g, C. Santamarina^f, D.A. Scannicchio^w, C. Schiavi^k, E. Segura^g, J.M. de Seixas^b, S. Sivoklokov^r, R. Soluk^h, E. Stefanidis^t

^aBrookhaven National Laboratory (BNL), Upton, New York, USA. ^bUniversidade Federal do Rio de Janeiro, COPPE/EE, Rio de Janeiro, Brazil. ^cRutherford Appleton Laboratory, Chilton, Didcot, UK. ^dUniversity of Michigan, Ann Arbor, Michigan, USA. ^eCentre de Physique des Particules de Marseille, IN2P3-CNRS-Université d'Aix-Marseille 2, France. ^fCERN, Geneva, Switzerland. ^gInstitut de Física d'Altes Energies (IFAE), Universidad Autónoma de Barcelona, Barcelona, Spain. ^hUniversity of Alberta, Edmonton, Canada. ⁱDipartimento di Fisica dell'Università di Lecce e I.N.F.N., Lecce, Italy. ^jDipartimento di Fisica dell'Università di Milano e I.N.F.N., Milan, Italy. ^kDipartimento di Fisica dell'Università di Genova e I.N.F.N., Genova, Italy. ^lLaboratory for High Energy Physics, University of Bern, Switzerland. ^mDepartment of Physics, Royal Holloway, University of London, Egham, UK. ⁿSection de Physique, Université de Genève, Switzerland. ^oInstitut für Experimentalphysik der Leopold-Franzens Universität, Innsbruck, Austria. ^pDipartimento di Fisica dell'Università di Roma 'La Sapienza' e I.N.F.N., Rome, Italy.

1. Objective



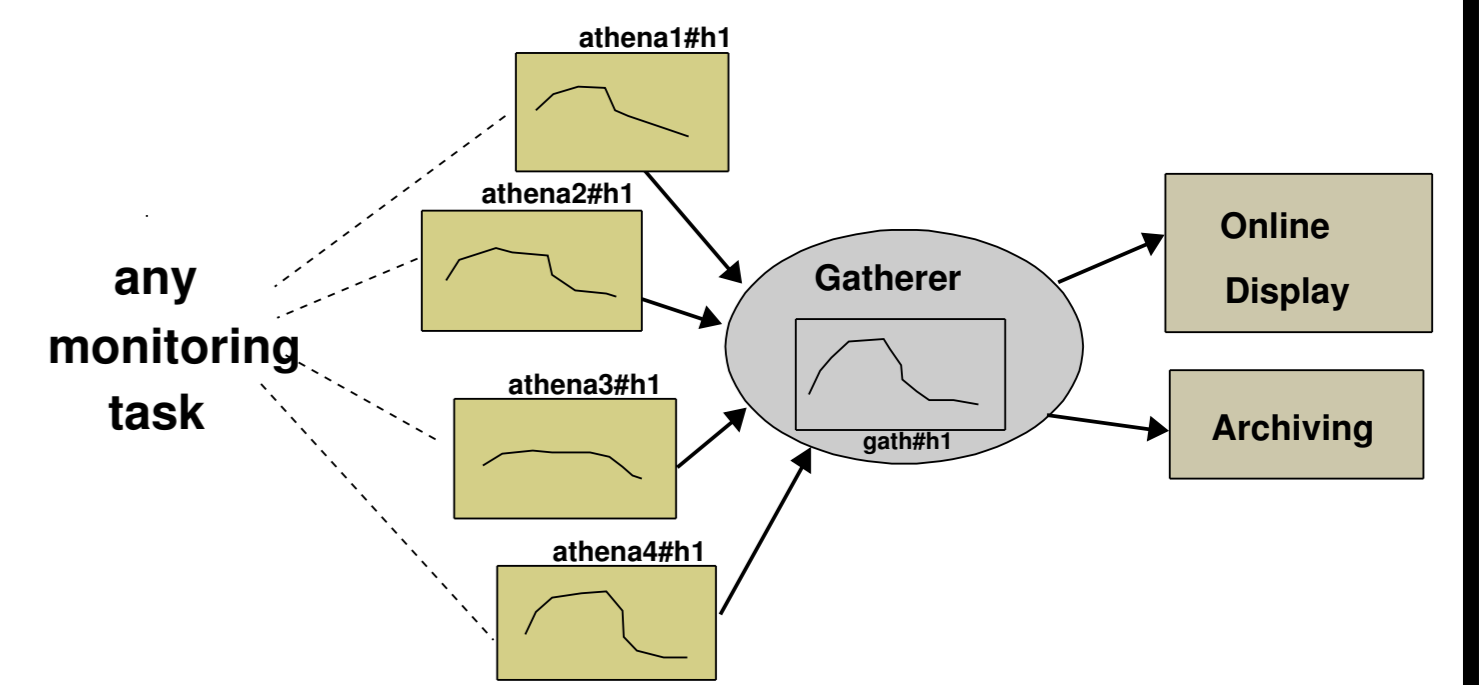
During data taking many monitoring information is produced:

- Hardware performance.
- Calibration & alignment.
- Trigger performance.
- Reconstruction & analysis.

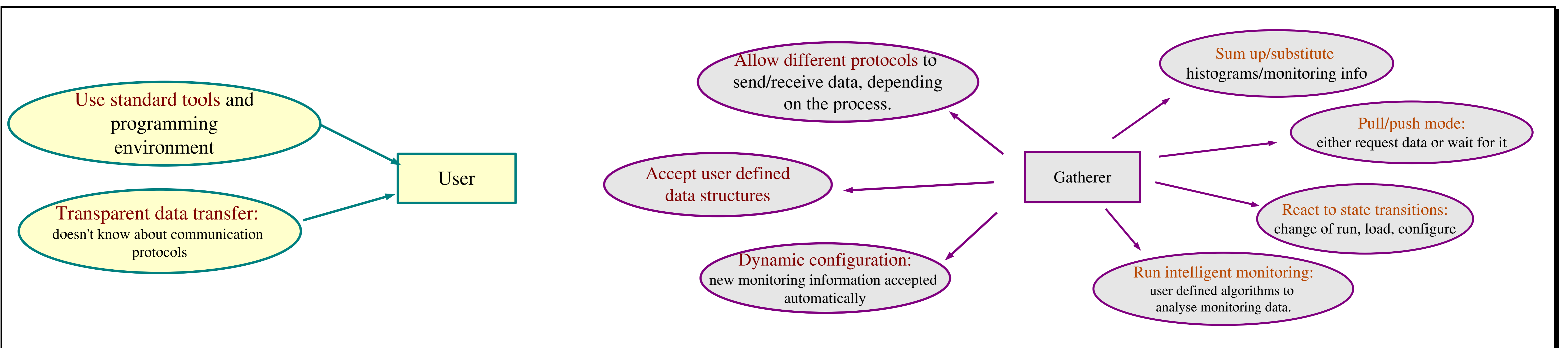
A central process to collect & display monitoring data is needed.

It provides:

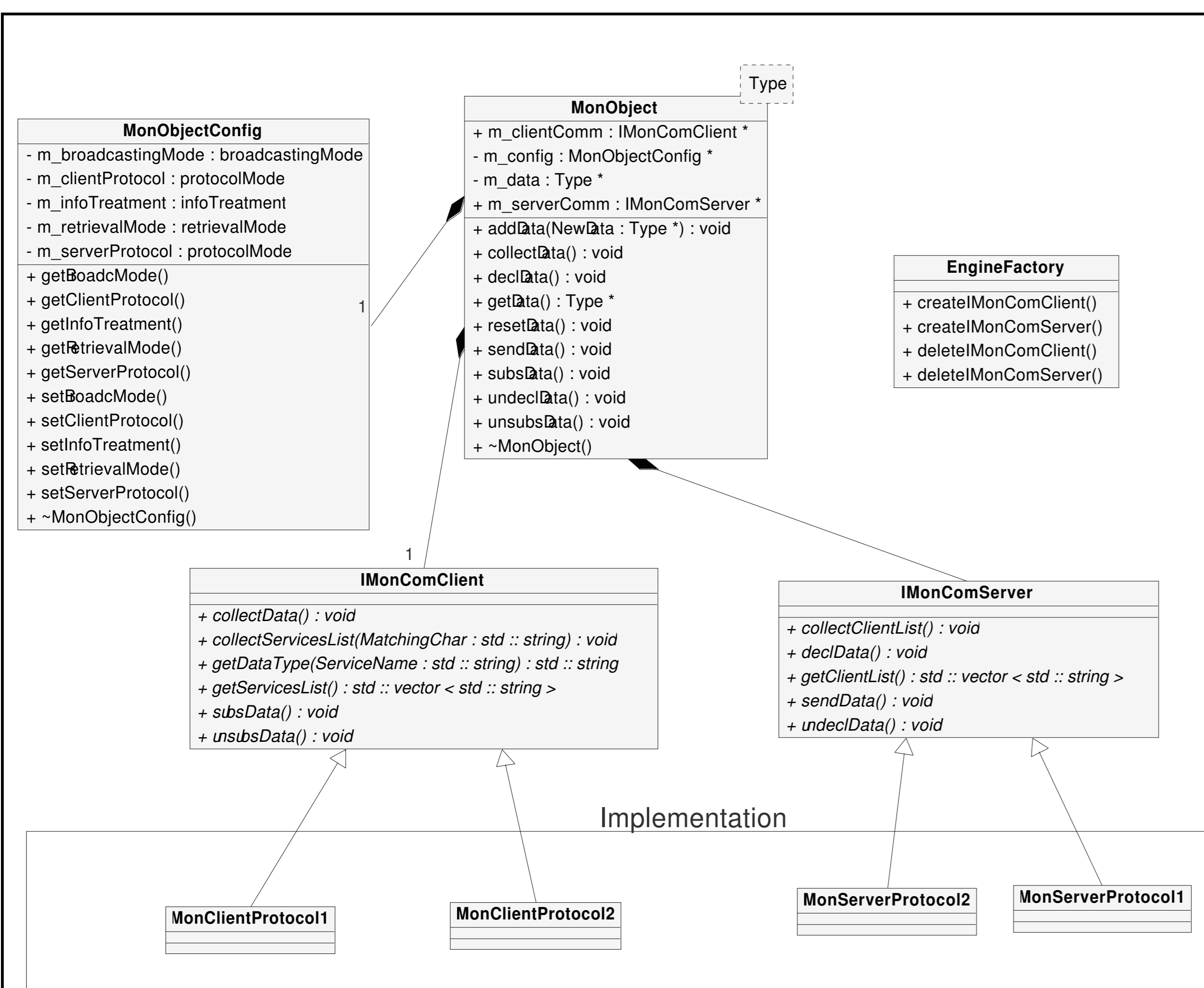
- Common tools for all processes to collect, add up statistics and publish monitoring information.
- Environment for intelligent monitoring.



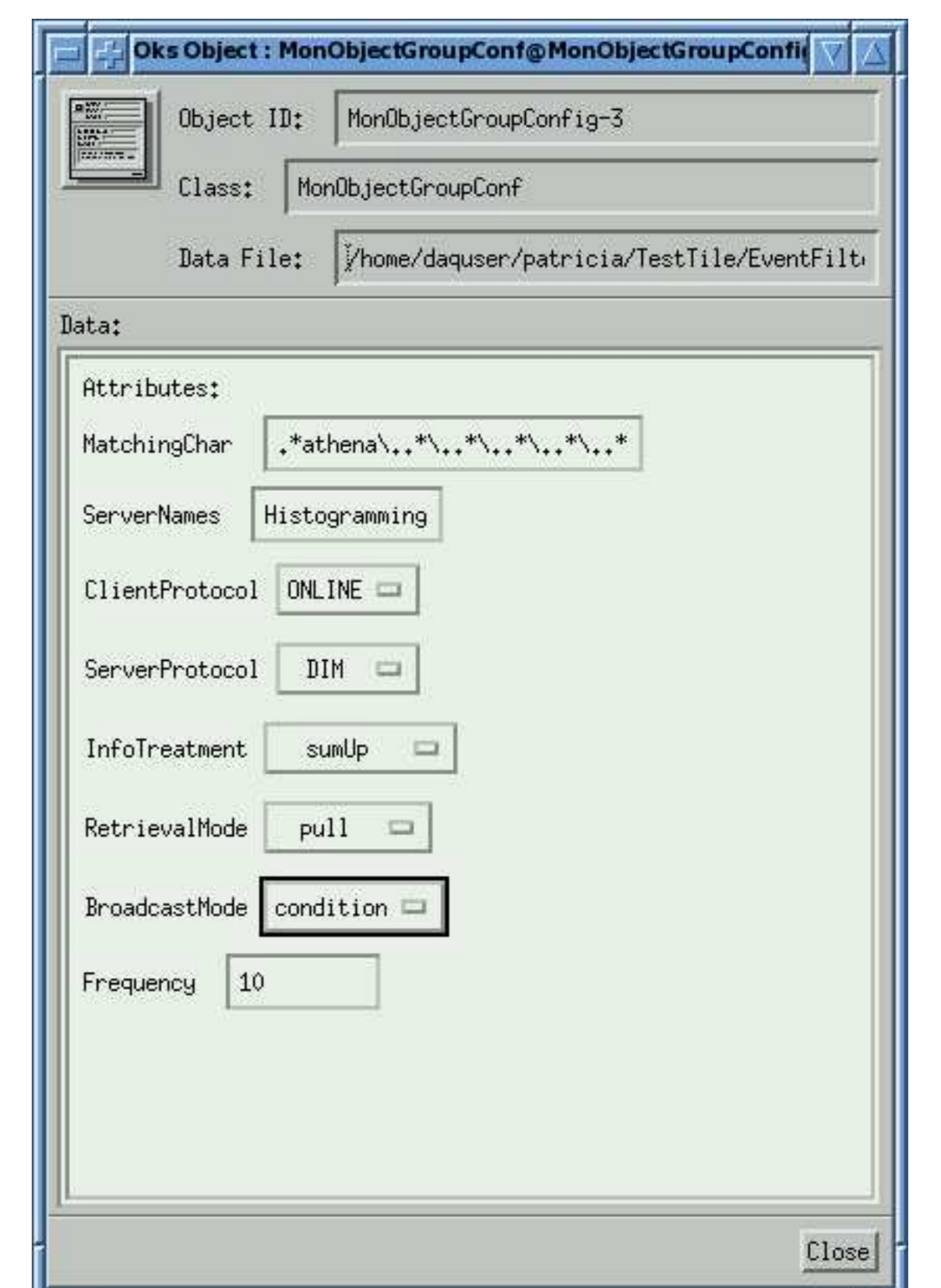
2. Requirements



3. Design: Data transfer and communications.



- One MonObject per monitoring variable: allows treating monitoring variables independently.
- The server/client communications are defined through an abstract interface. Could be implemented using any communications protocol.
- Communication objects created throw a factory.
- Each MonObject configures itself. Needs access to the configuration database.



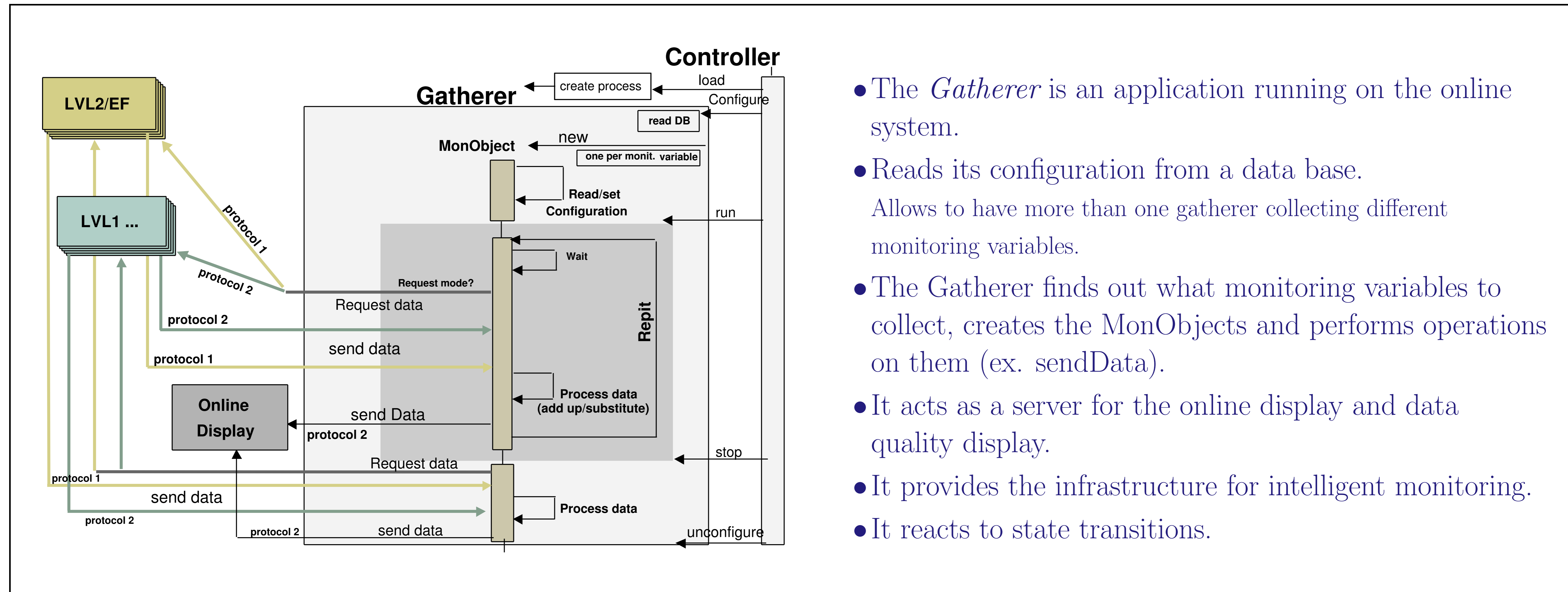
Calibration and Monitoring at ATLAS



G. Comune¹, P. Conde Muñoz², A. De Santo³, M. Diaz Gomez⁴, M. Dosi⁵, N. Ellis⁶, D. Emelianov⁷, B. Epp⁸, S. Falciano⁹, A. Farilla¹⁰, S. George¹¹, V. Ghete¹², S. Gonzalez¹³, G. Merino¹⁴, R. Moore¹⁵, P. Moretti¹⁶, A. Negri¹⁷, N. Nikitin¹⁸, A. Nisati¹⁹, C. Padilla²⁰, N. Panikashvili²¹, F. Parodi²², V. Perez Reale²³, J.L. Pinfold²⁴, P. Pinto²⁵, S. Sushkov²⁶, M. Sutton²⁷, S. Tapprogge²⁸, E. Thomas²⁹, F. Touchard³⁰, B. Venda Pinto³¹, V. Vercesi³², P. Werner³³, S. Wheeler³⁴, F.J. Wickens³⁵, W. Wiedenmann³⁶, M. Wieler³⁷, G. Zobernig³⁸

¹Dipartimento di Fisica dell'Università di Roma 'Roma Tre' e INFN, Rome, Italy. ²Department of Physics, University of Wisconsin, Madison, Wisconsin, USA. ³Lehrstuhl für Informatik V, Universität Mannheim, Mannheim, Germany. ⁴Department of Physics and Astronomy, University College London, London, UK. ⁵Fachbereich Physik, Bergische Universität Wuppertal, Germany. ⁶Institute of Physics, Academy of Sciences of the Czech Republic, Prague, Czech Republic. ⁷Dipartimento di Fisica Nucleare e Teorica dell'Università di Pavia e INFN, Pavia, Italy. ⁸Institute of Nuclear Physics, Moscow State University, Moscow, Russia. ⁹Department of Physics, Technion, Haifa, Israel. ¹⁰Institut für Physik, Universität Mainz, Mainz, Germany. ¹¹CFNUL - Universidade de Lisboa, Faculdade de Ciências, Lisbon, Portugal. ¹²University of California at Irvine, Irvine, USA. ¹³University of Victoria, Victoria, Canada.

4. Design: Infrastructure.



- The *Gatherer* is an application running on the online system.
- Reads its configuration from a data base. Allows to have more than one gatherer collecting different monitoring variables.
- The Gatherer finds out what monitoring variables to collect, creates the MonObjects and performs operations on them (ex. sendData).
- It acts as a server for the online display and data quality display.
- It provides the infrastructure for intelligent monitoring.
- It reacts to state transitions.

5. Implementation: first prototype.

Used at the ATLAS Test Beam (summer 2004). It had a simplified implementation:

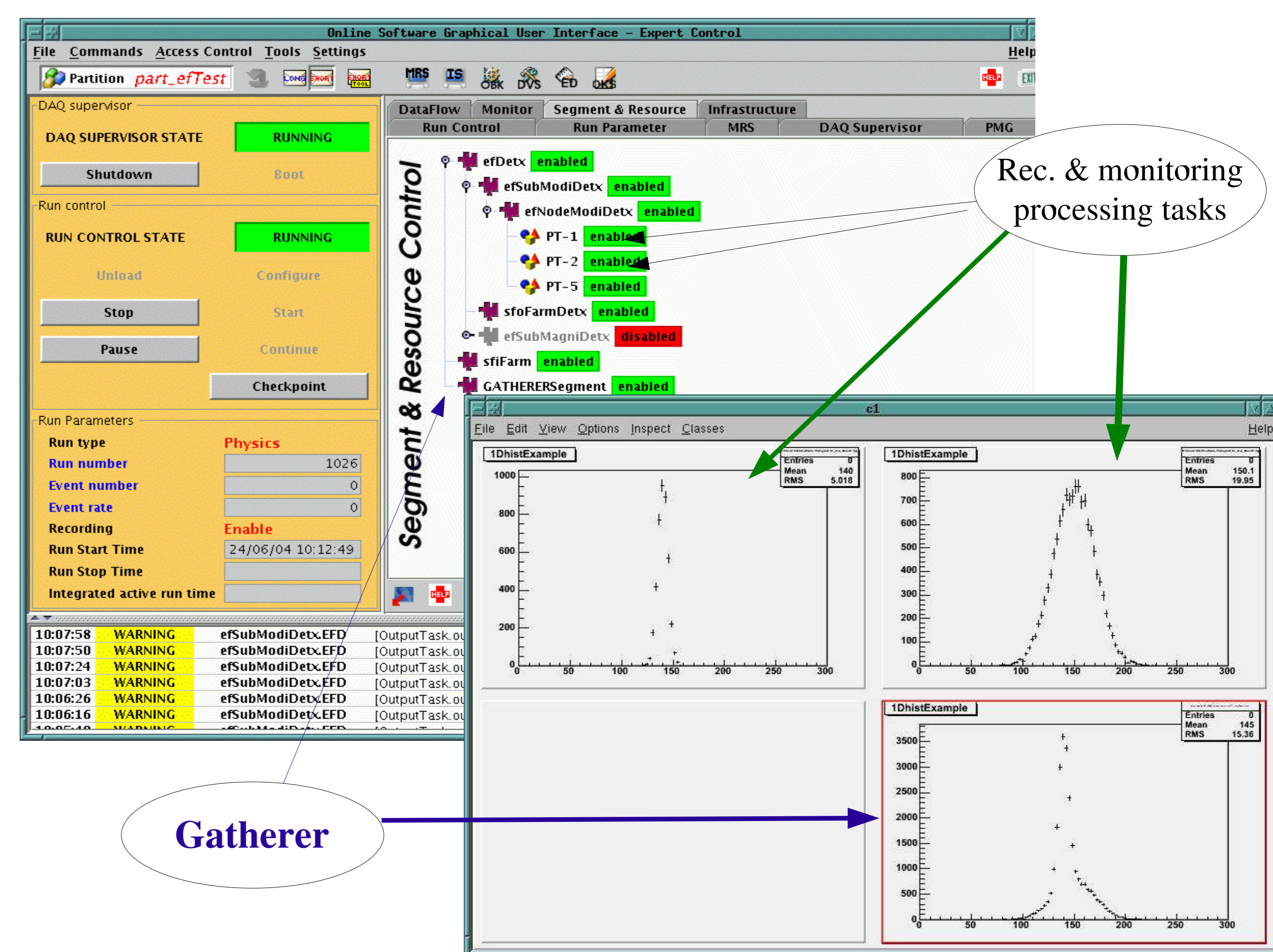
- Main objective: to be robust. Configured at start time. Minimal interaction with the users once started (no commands).
- Only one protocol implemented (Information Service^a, based on CORBA).
- An algorithm running at the Event Filter^b publishes all histograms from the reconstruction and monitoring tasks \Rightarrow the users do not know about data transfer.
- Other processes in the TDAQ publish information in their standard way.

Performance of the Gatherer:

- CPU usage: up to 30% (3.2 GHz processor) during data transfer.
- Idle more than 30% of the time.
- Memory usage: \sim 10% (1 GB processor) during data transfer.
- Communications may be slow (strong dependence on the protocol used). Adding more gatherers and changing the configuration the time of the data transfer can be sensibly reduced.
- Average size of data transferred: \sim 90 MB. Expected size at Atlas 900-9000 MB.

^a<http://atddoc.cern.ch/Atlas/DaqSoft/components/is/Welcome.html>

^b3rd trigger level



6. Conclusions

- The first prototype of a monitoring system for the ATLAS experiment has been designed and implemented for the 2004 Test Beam.
- The system has been designed to have maximum flexibility, dynamicity and user friendliness.
- It abstracts the communications layer, allowing transparency for the user and the possibility of using different protocols for the data transfer.
- Having dynamic configuration and the possibility to use different communication protocols allow to tune the system in order to optimize the performance.