


The ATLAS Fast Tracker - Architecture, Status and High-Level Data Quality Monitoring Framework

Alexandros Marantis¹ *  on behalf of the ATLAS collaboration

¹ Hellenic Open University

* Correspondence: alexandros.marantis@cern.ch; Tel.: +302610367517

Abstract: The Fast Tracker (FTK) is a highly parallel processor dedicated to a quick and efficient reconstruction of tracks in the Pixel and Semiconductor Tracker (SCT) detectors of the ATLAS experiment at LHC. It is designed to identify charged particle tracks with transverse momentum above 1 GeV and reconstruct their parameters at an event rate of up to 100 kHz. The average latency of the processing is below 100 microseconds at the expected collision intensities. This performance is achieved by using custom ASIC chips with associative memory for pattern matching, while modern FPGAs calculate the track parameters. This paper describes the architecture, the current status and a High-Level Data Quality Monitoring framework of the FTK system. This monitoring framework provides an online comparison of the FTK hardware output with the FTK functional simulation, which is run on the pixel and SCT detector data at a low rate, allowing the detection of non-expected outputs of the FTK system.

Keywords: ATLAS, Fast Tracker, FTK, Associative Memory, Data Quality Monitoring

1. Introduction

ATLAS [1] is one of the two general-purpose detectors of the Large Hadron Collider (LHC), built for precision tests of the Standard Model (SM), as well as searching for physics beyond the SM at TeV energy scales. Since the LHC start up, ATLAS has produced many physics results, with the big highlight being the discovery of the Higgs boson [2].

In order to increase the number of interesting events produced at proton-proton (p-p) collisions per unit time, the LHC increases the instantaneous luminosity of the colliding beams, yielding an ever increasing number of p-p interactions in the same bunch crossing. Therefore, along with the p-p interaction of interest, additional p-p interactions (pile-up) occur practically at the same time for the detector. In 2015, the LHC started colliding protons at a centre-of-mass energy of 13 TeV and, as shown in Figure 1a, the delivered integrated luminosity raised from around 4 fb⁻¹ in 2015 to around 65 fb⁻¹ to 2018. As a consequence of the increased instantaneous luminosity, there is a growth in the number of multiple proton-proton interactions per bunch crossing, as shown in Figure 1b, which makes the distinction between signal and background difficult and reduces the resolution of the detector. In 2015 the average number of pile-up events was ~13 while in 2018, it reached to ~37. From 2021 onwards, during Run III of the LHC, there will be a further increase in the luminosity as well as in the average number of pile-up events. In these environments, the effective selection of interesting physics events by the ATLAS trigger system will be a big challenge.

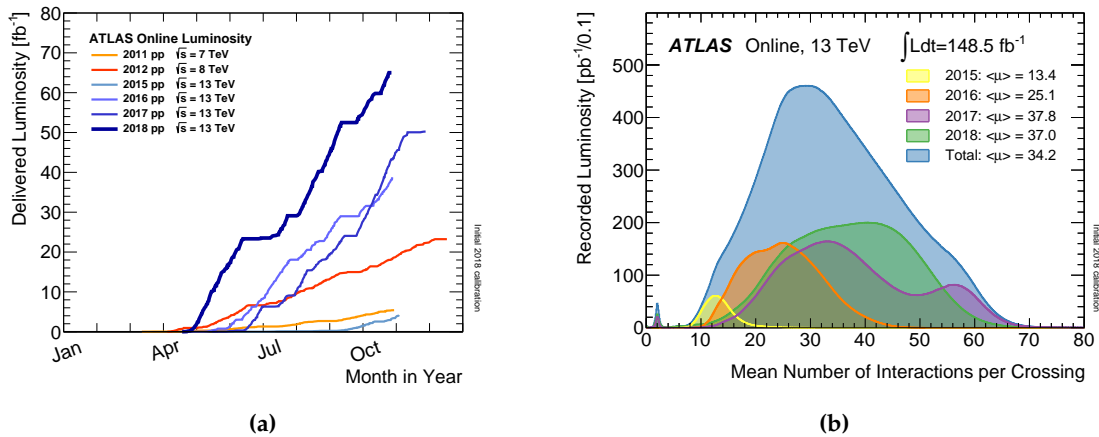


Figure 1. (a) Cumulative luminosity versus day for 2011-2018 delivered to ATLAS during stable beams for high energy p-p collisions. [7] (b) Mean number of Interactions per Crossing, showing the 13 TeV data from 2015 – 2018. [7]

2. The ATLAS Fast Tracker

In order to reduce the huge flow of data for permanent storage, the ATLAS Trigger and Data Acquisition System (Figure 2) selects events with characteristics that make them interesting for physics analyses. For this purpose a two-stage system is used. At the first stage, custom hardware called Level-1 Trigger (L1) [5] checks the information from the calorimeters and the muon system and reduces the event rate from 40 MHz to 100 kHz. If the event is interesting, the L1 system sends an acceptance signal to all Front-End (FE) electronics, resulting in the relevant data being pushed via the Read-Out Drivers (ROD) to the Read-Out System (ROS) where they are buffered. At the second stage, the High-Level Trigger (HLT) [6] pulls data on-demand from these buffers in order to complete the online selection. The HLT is implemented as a farm of commodity PCs. The processing starts from the "Regions of Interest" (ROIs) in the event, as they are identified by the L1 trigger. The HLT uses the information from all sub-detectors in their full granularity, including the Inner Detector [4] (Insertable B-layer [10], Pixel Detector, Semiconductor Tracker, Transition Radiation Tracker). Adding the track information in the trigger decision can improve significantly the efficiency for retaining interesting physics signals (e.g, $H \rightarrow \tau\tau$ or $H \rightarrow b\bar{b}$ events), while at the same time gives more handles to reject background. But as the instantaneous luminosity increases, the reconstruction of the tracks in an ever denser detector occupancy becomes ever more difficult and the time required to reconstruct the event becomes even longer. Thus, while the HLT is in need to employ more and more sophisticated algorithms in these conditions, it is left with potentially little time to execute them. In order to remove this burden from the HLT, a dedicated hardware system, called the Fast Tracker [3] (FTK) recognizes and reconstructs all tracks with transverse momentum (p_T) above 1 GeV and provides them to the HLT before it starts processing the event.

The FTK uses the hits of the twelve silicon layers of the Inner Detector to calculate the track parameters. A "Hit", as used here, refers to the cluster centroid of the particle's energy deposition, as it traverses a silicon layer. The information of the tracks is provided to dedicated buffers in the Read-Out System where it is kept until it is asked by the HLT. Upon the acceptance of the event, the full information produced so far (i.e full-granularity detector information, as well as the information produced by the Trigger system, including the FTK) is built in a complete "event", which is written to local disks by the System Farm Output. These events are then shipped off-site to the Tier0 computer farm for permanent storage and subsequent offline analysis.

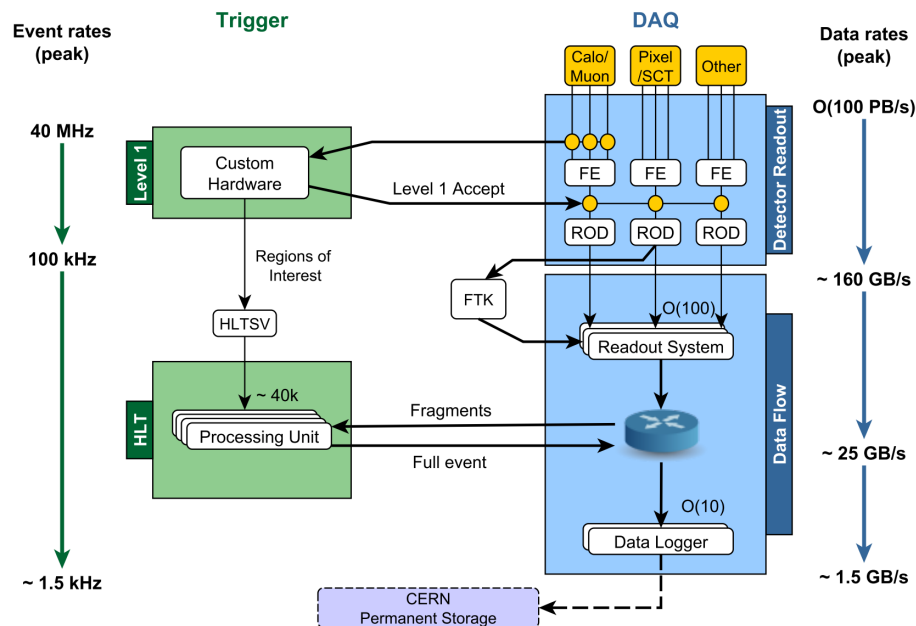


Figure 2. The ATLAS DAQ System in LHC Run 2.

2.1. Operational principle

The FTK operates in two stages. At the first stage information from eight out of the twelve silicon layers is used to perform pattern recognition and initial track finding. At the second stage, information from the additional four layers is used to perform a final track fit with improved quality and the tracks are organized and sent to the HLT.

As a preparation for the track-finding stages, the first operation of the FTK, after receiving the data from the silicon detectors, is to identify clusters of neighboring detector cells and calculate their centroid. Using these centroids to indicate the points of passage of the charged particles traversing the various silicon layers, reduces the data volume propagated to the rest of the system. These hits are then sorted into 64 η - ϕ regions (16 ϕ and 4 η regions of the detector) for the purpose of parallel processing in the corresponding Processing Units (PU). For the eight of the twelve layers, the hits are re-grouped as coarser resolution segments, called "Super Strips" (SS) and a map associating Super Strips and hits is kept. A large number of track patterns ($> 10^9$) with Super Strip resolution have been simulated [9] and pre-stored in dedicated ASIC chips for later comparison with the patterns in the real data. When a pre-stored pattern is found to be contained in the real data, the ASIC chip returns it and calls it a "road". For each road (a collection of matched Super Strips), the full-resolution hits are retrieved and are used to calculate a chi-square for each possible combination of 8 hits, one hit per layer. The eight-layer tracks satisfying a minimum chi-square value are then extrapolated into the four additional layers and a full twelve-layer fit is performed. The twelve-layer tracks then are sent to the HLT. The layout of the FTK dataflow is presented in Figure 3.

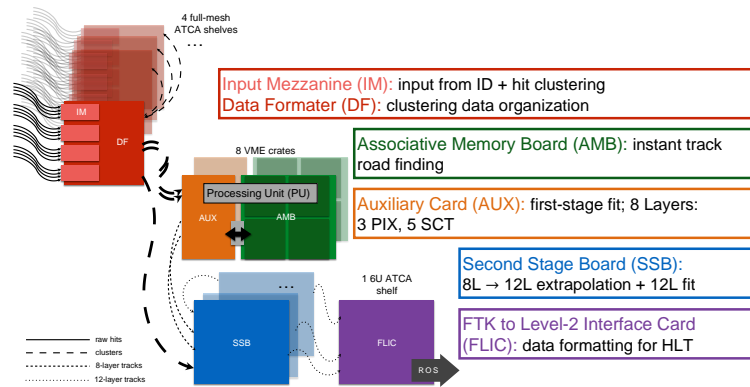


Figure 3. The FTK receives raw hits from the Inner Detector and provides to HLT reconstructed 12-layer tracks.

2.2. The FTK architecture

Figure 4 depicts a functional sketch of the FTK architecture. The large amount of data that FTK receives from the silicon detectors, necessitates organizing FTK as a set of independent processing engines, so that each engine corresponds to a different region of the silicon tracker. This organization is achieved with the segmentation of the tracker in $64 \eta\text{-}\phi$ regions, which are called "towers".

The Pixel and Strip data are transmitted from the RODs to the Data Formatters (DF), through S-LINK fibers. Input Mezzanine (IM) boards, located on the DF, perform cluster finding (2-dimensional for the pixel layers; 1-dimensional for the strips). Clusters consist of neighboring pixels, linked diagonally or side-by-side. The DF groups the data based on the $64 \eta\text{-}\phi$ map of the silicon detector regions and transfers the cluster centroids (hits) to the corresponding Processing Unit (PU), which contains the AUXiliary board and the Associative Memory Board (AMB). Specifically, the hits are received by the AUX board, which stores them in the Data Organizer (DO) (a database built on the fly that relates the hits with the lower resolution Super Strips and allows a rapid retrieval of the hits in a Super Strip) and sends them to the AMB.

The AMB contains a large number of simulated Monte-Carlo patterns ($> 10^9$), corresponding to all the relevant combinations of Super Strips, each combination defining a possible track path through eight silicon layers; 3 pixel layers (the B-layer and two outer pixel layers) and five SCT layers (four axial layers and one stereo layer). The simulated patterns are determined from a full simulation of the ATLAS detector with single tracks and are stored in Associative Memory chips [11] (AM chips) which hold 128k patterns each. Due to the fact that AM chips work in parallel, the pattern recognition in FTK finishes shortly after the last hit of the 8-layers is received from the silicon RODs. A pattern which is matched in the data in all 8 or just 7 of the layers, defines a road containing a possible track. The AMB sends the road ID number to the DO, which sends this road ID number along with the full resolution hits to the Track Fitter (TF). The TF has access to a database which contains sets of pre-calculated constants, linearized by using a Principal Component Analysis (PCA) technique, for each detector sector. By using these constants, both the track helix parameters and the χ^2 , can be calculated as linear functions of the local hit coordinates. Nevertheless, in order to decide which tracks should pass to the second stage, the first stage only calculates the χ^2 , not the helix parameters. Since in the first-stage there are 8 layers with a maximum of 11 measured coordinates (6 of them coming from the 3 pixel layers) and there are 5 helix parameters, the fit has 6 degrees of freedom and the χ^2 is calculated as:

$$\chi^2 = \sum_{i=1}^6 \left(\sum_{j=1}^{11} S_{ij} x_j + h_i \right)^2 \quad (1)$$

where S_{ij} and h_i are the pre-calculated constants for this detector sector and x_j are the local hit coordinates. In order to reduce the data sent to the second stage, the Hit Warrior (HW), removes the duplicate tracks which have already passed a χ^2 requirement. Subsequently, the Second Stage Board (SSB) receives from the AUX board, the road ID number and the full resolution hits. The first-stage track is extrapolated to the additional 4 layers; a minimum of 3 hits in the 4 layers is required and finally a full 12-layer fit is performed. Both the χ^2 and the helix parameters are determined this time. The track fitting is performed rapidly by using a simple linear calculation according to the following formula:

$$\tilde{p}_i = \sum_{l=1}^N c_{il} x_l + q_i, \quad \forall l = 1 \dots 5, \quad (2)$$

where, \tilde{p}_i are the 5 helix parameters, c_{il} and q_i are the pre-calculated constants for this detector sector and x_l are the local hit coordinates.

After the second-stage fitting, a removal of duplicated tracks is carried out again for those tracks that passed a χ^2 cut. The output of the SSB contains the 12-layer hit tracks, the helix parameters, the χ^2 and a word regarding the track quality which includes the layers with a hit. This output is received by the FTK-to-Level2 Interface Crate (FLIC) which organizes the tracks using the standard ATLAS protocols and sends them to the FTK ROBs.

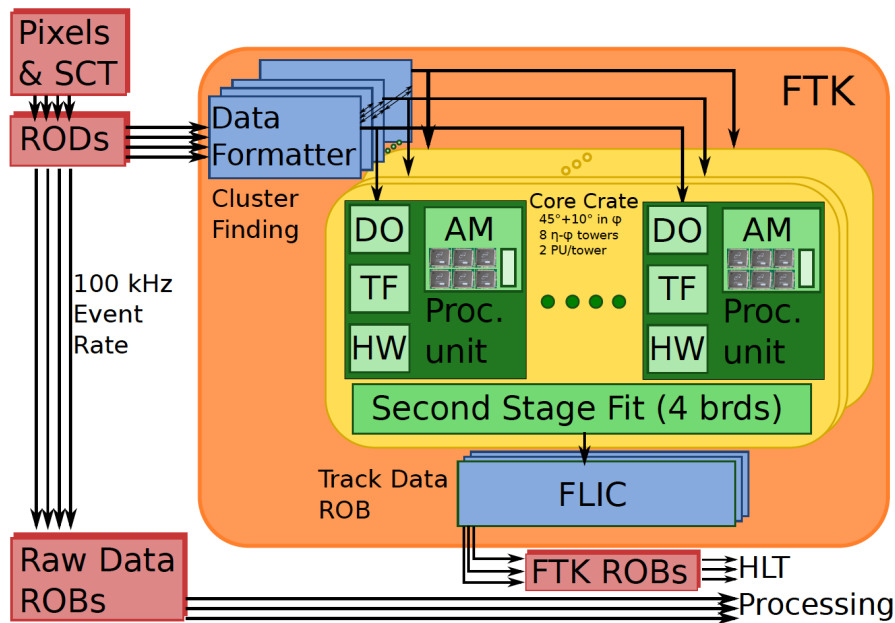


Figure 4. Functional sketch of FTK. AM is the Associative Memory, DO is the Data Organizer, FLIC is the FTK-to-Level-2 Interface Crate, HW is the Hit Warrior, ROB is the ATLAS Read Out input Buffer, ROD is a silicon detector Read Out Driver, and TF is the Track Fitter. Second Stage Fit is referred to as the Second Stage Board elsewhere in the document.

2.3. FTK infrastructure and status

The FTK is currently being installed in the electronics room beside the ATLAS cavern. It is composed of 13 crates; 8 Versa Module Europa (VME) core crates and 5 Advanced Telecommunications Computing Architecture (ATCA) shelves.

The eight 9U VME core crates contain the AMBs, the AUX cards and the SSBs. The four ATCA shelves with full-mesh backplanes carry the DF boards, while one ATCA shelf, with a dual-star backplane, contains the FLIC cards. The layout and the organization of an FTK core crate are shown in Figure 5. Each VME crate covers 45° of the ATLAS detector in azimuth. There are 16 Processor Units (PU), each consisting of an AMB with an AUX board connected behind it. Four PUs send eight-layer

tracks to a common SSB. Each pair of SSBs transmits the twelve-layer tracks to the FLIC crate, when then sends them to the FTK ROSs.

Currently, FTK has integrated two "slices" into the ATLAS detector, and they regularly take data. The first slice, contains boards of each type, (four IMs on a DF, one AUX, one AMB, one SSB, one FLIC), fitting 12-layer tracks and the second slice contains the first half of the FTK chain (four IMs on a DF, one AUX, one AMB) giving 8-layer tracks as output. The FTK commissioning is on-going and data-taking is limited to the two slices mentioned above. In the 2-year LHC shutdown (2019-2020), FTK will continue the preparations for the Run III of the LHC, when it should deliver tracks from the whole silicon detector region to the HLT. In parallel to the commissioning of the FTK hardware, the HLT infrastructure and algorithms are preparing to make use of the FTK tracks. It is expected that FTK will enhance significantly the physics potential of the ATLAS experiment. As an example, the use of FTK tracks in the HLT will improve drastically the efficiency of identifying taus from $H \rightarrow \tau\tau$ decays, in the low- p_T region below 30 GeV, where the current calorimeter-based HLT algorithms have a slow efficiency turn-on (for a collection of FTK results and performance expectations see [8]).

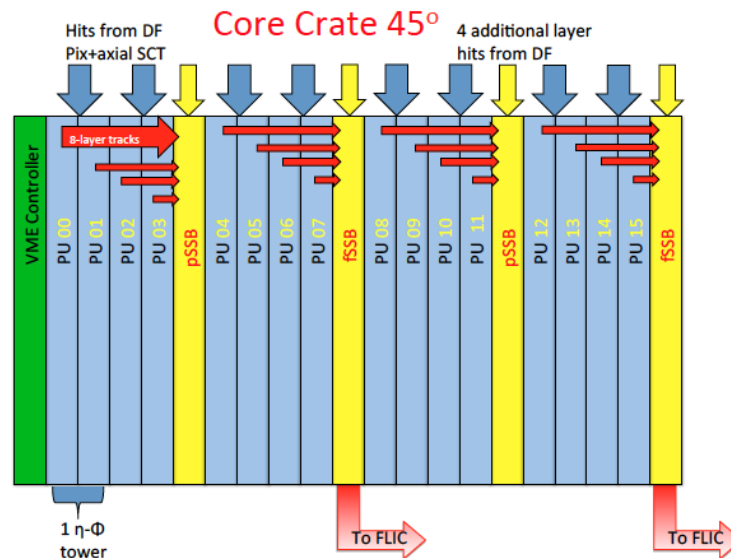


Figure 5. Layout of an FTK core crate and the interboard and intercrate data flow.

3. High-Level Data Quality Monitoring Framework

In the offline environment, Tier0 monitoring can perform a comparison between FTK tracks and offline tracks, or also compare HLT objects reconstructed with FTK tracks to those reconstructed with offline tracks. For online monitoring, FTK hardware specific information and physics event data in various processing stages, stored in the Spy Buffers of the FTK boards, are gathered, processed and presented by the monitoring facilities. However, there is a need to independently verify that the twelve-layer track outputs are functioning as expected on a track-by-track basis. The FTK High-Level Data Quality monitoring framework is used in order to confirm that the 12-layer tracks produced by the FTK system, agrees with the expected tracks resulting from the FTK Simulation [12]. To achieve this, a comparison between these two output streams is taking place and the histograms of this comparison are published to the Online Histogramming Service (OHS). This comparison is a simple way to detect non-expected output tracks from the FTK hardware. In Figure 6 is presented the general picture of this monitoring framework.

A full event fragment is sampled by the Data Collection Manager (DCM) and acquired through the Event Monitoring (EMON) [13] service. The silicon detector data of this event serve as input for the FTK Simulation. The simulation dataflow processes the input event by following four basic algorithms. First, it identifies the clusters and calculates the hit coordinates from their centroids. Then, it simulates the geometrical distribution of the clusters to the 64 FTK towers in order to be matched

with the track patterns stored in AMBs. Next, the pattern matching algorithm reads these patterns and finds coincidences with clusters of the events. Finally, the track fitting reads the track candidates and searches for good tracks among the clusters. It extrapolates the good tracks in the additional four-layers and the tracks are collected and merged in a full event. After the FTK Simulation has finished, a comparison tool gets the simulated FTK tracks, extracts the real FTK hardware tracks, and performs a comparison between the parameters of these tracks. Based on the difference between the track parameters, four classes of histograms are created (completely matched tracks, slightly different tracks, tracks only in the FTK hardware stream, tracks only in the FTK simulation stream). After the comparison, the histograms are published to the OHS.

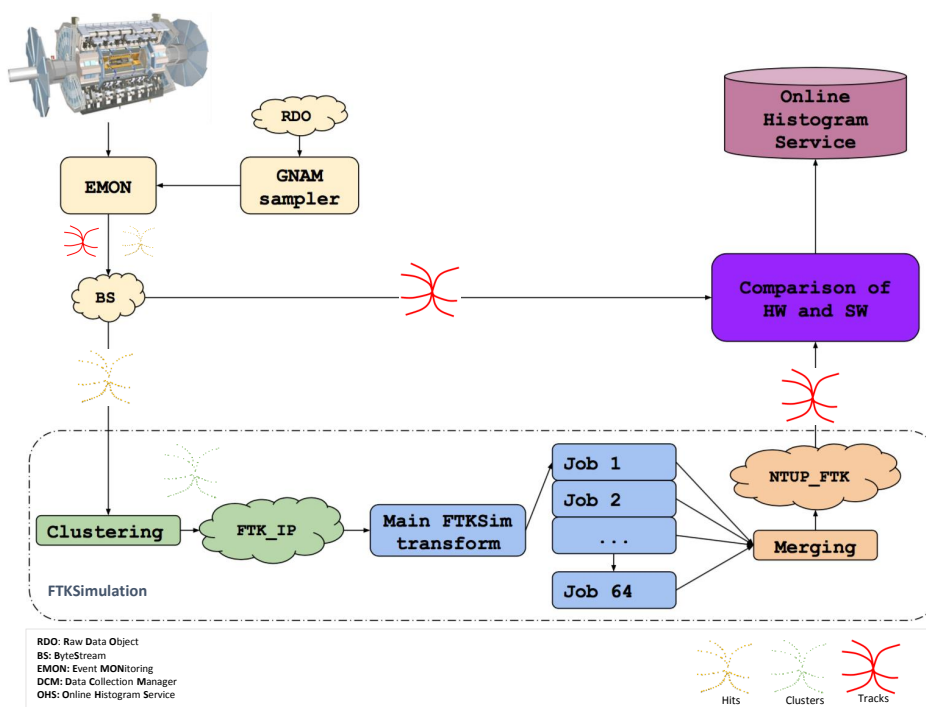


Figure 6. Layout of the High-Level Data Quality Monitoring Framework.

4. Conclusions

The ATLAS FTK is expected to provide high quality tracks to the HLT at the rate of 100kHz. This will reduce the pile-up dependency of the system and improve the efficiency in the collection of interesting p-p collision events. It will also allow HLT to use more complex algorithms to look for particular signatures in the search of the physics beyond Standard Model. The integration with the ATLAS detector has already begun and the FTK is expected to fully operate during the Run III of the LHC.

Acknowledgments: The research work was partially supported by the Hellenic Open University Grant No. Φ K 228 and the Hellenic Foundation for Research and Innovation (HFRI) and the General Secretariat for Research and Technology (GSRT), under the HFRI PhD Fellowship Grant GA. no. 677.

References

1. ATLAS Collaboration, *The ATLAS Experiment at the CERN Large Hadron Collider*, JINST 3 (2008) S08003
2. ATLAS Collaboration, *Observation of a new particle in the search for the Standard Model Higgs boson with the ATLAS detector at the LHC*, Phys. Lett. B716 (2012) 1.
3. ATLAS Collaboration, *Fast TracKer (FTK) Technical Design Report*, CERN-LHCC-2013-007, ATLAS-TDR-025, <https://cds.cern.ch/record/1552953>
4. ATLAS Collaboration, *ATLAS inner detector : Technical Design Report, 2*, CERN-LHCC-97-017, ATLAS-TDR-5, <https://cds.cern.ch/record/331064>
5. ATLAS Collaboration, *ATLAS level-1 trigger : Technical Design Report*, CERN-LHCC-98-014, ATLAS-TDR-12, <https://cds.cern.ch/record/381429>
6. ATLAS Collaboration, *ATLAS high-level trigger, data-acquisition and controls : Technical Design Report*, CERN-LHCC-2003-022, ATLAS-TDR-16, <https://cds.cern.ch/record/616089>
7. <https://twiki.cern.ch/twiki/bin/view/AtlasPublic/LuminosityPublicResultsRun2>
8. <https://twiki.cern.ch/twiki/bin/view/AtlasPublic/FTKPublicResults>
9. A. Annovi et al., *Variable resolution Associative Memory optimization and simulation for the ATLAS FastTracker project*, PoS RD13 (2013) 014
10. ATLAS IBL Collaboration, *Production and Integration of the ATLAS Insertable BLayer*, JINST 13 (2008) T05008
11. A. Annovi et al., *"AM06: the Associative Memory chip for the Fast TracKer in the upgraded ATLAS detector*, JINST 12 (2017) C04013
12. J. Adelman et al., *ATLAS FTK challenge: simulation of a billion-fold hardware parallelism*, ATL-DAQ-PROC-2014-030, <https://cds.cern.ch/record/1951845>
13. I. Scholtes, S. Kolos and P. F. Zema, *The ATLAS Event Monitoring Service—Peer-to-Peer Data Distribution in High-Energy Physics*, IEEE Transactions on Nuclear Science, vol. 55, no. 3, pp. 1610-1620, June 2008. doi: 10.1109/TNS.2008.924057