

Mpox screening form for healthcare facility entrances

Primary Screening: To identify potential suspect mpox symptoms before entering a healthcare facility

Ask everyone (patients, caregivers, health and care workers, and visitors) at each point of entry into the healthcare facility the following questions.

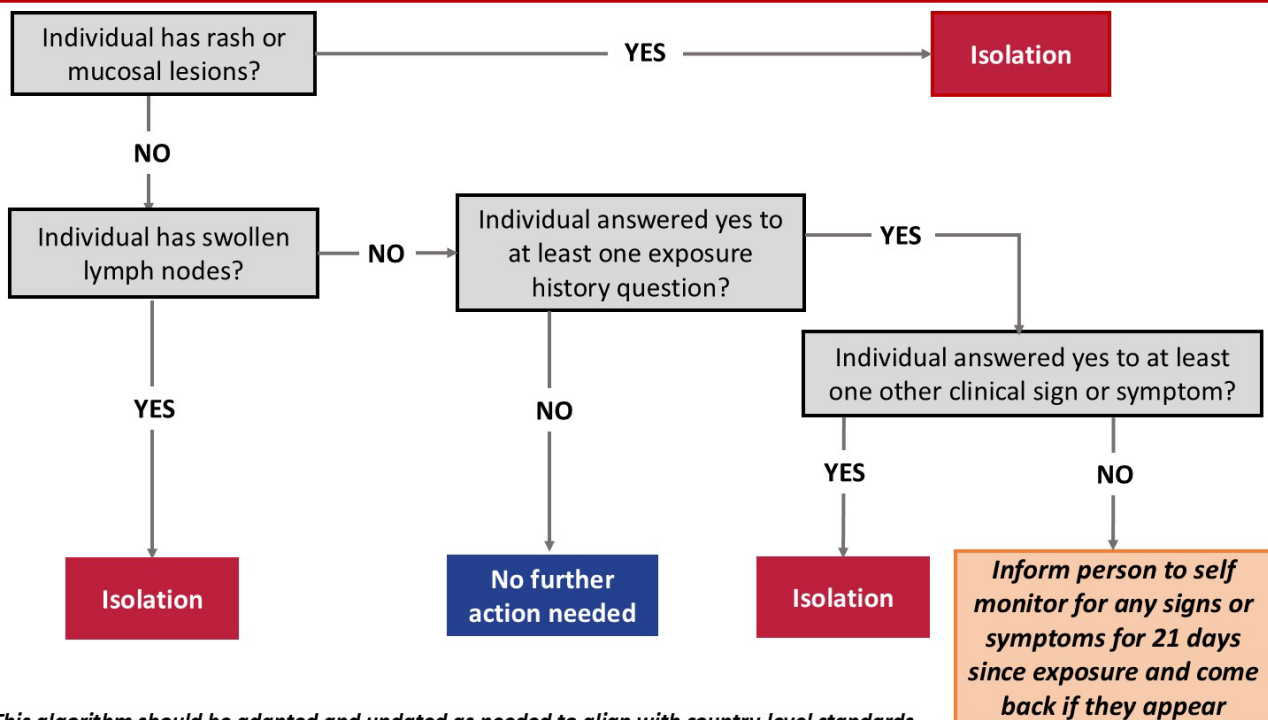
Clinical signs and symptoms *(please update here to local context)*

- | | |
|---|---|
| <input type="checkbox"/> Rash or mucosal lesions | <input type="checkbox"/> Muscle pain/body aches/back pain |
| <input type="checkbox"/> Headache | <input type="checkbox"/> Generalized weakness |
| <input type="checkbox"/> Recent or current fever (> 38.5°C) | <input type="checkbox"/> Fatigue (extreme tiredness) |
| <input type="checkbox"/> Swollen lymph nodes | |

Exposure history

- Have you been in close contact with anyone diagnosed with mpox or contaminated objects in the past 21 days?
- Have you traveled to an area with confirmed mpox cases in the past 21 days?
- Have you had contact with animals (alive or dead) like rats, mice, squirrels or primates, their feces, or eaten any raw or undercooked meat of these animals in the past 21 days?

Isolation algorithm based on above questions *(please update here to local context)*



*Note: This algorithm should be adapted and updated as needed to align with country-level standards
Source: WHO mpox Case Definition; March 2024*

Immediate IPC actions for individuals identified for isolation

- Provide the individual with a medical mask and instruct them on how to wear it properly.
- Ask the patient to clean their hands and cover lesions (as possible).
- Immediately notify a trained health and care worker to transfer the individual to a designated and well-ventilated holding or isolation area to be further assessed and receive care.
- The trained health and care worker should wear appropriate PPE (respirator, gloves, gown, eye protection) before attending to the suspected case.
- The suspected case should be kept at a safe distance at least 1 metre from others with a mask on or in separated single room with adequate ventilation.