

# Universal Health Coverage indicators (SDG 3.8.1 and 3.8.2 and related)

## Consultation process overview



# Interpreters Available : All 6 UN languages!

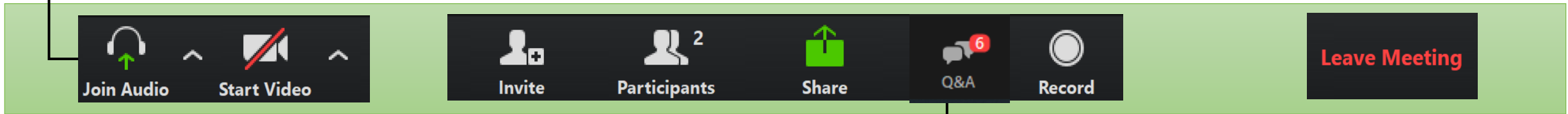
The screenshot shows a Zoom meeting interface. At the bottom, the 'Interpretation' icon (a globe) is circled in red. A red arrow points from the text 'Select your language' to the 'Interpretation' menu, which is open and shows the following options: Off (checked), English, French, Russian, and Spanish. Below the menu are options for 'Mute Original Audio' and 'Manage Language Interpretation...'. On the right side, the 'Participants (8)' list is visible, showing the host and several interpreters with their respective language flags: aidakereksizova (Russian), Taya Levine (English), Iciar Gomez (Spanish), Elena (Russian), Esperanza Pombo (Spanish), Karine Matusiak (French), and Kristin Cairns (French).

When the time comes, do not hesitate to ask your questions in one of the following languages:

- Arabic
- Chinese
- English
- French
- Spanish
- Russian

# Interactions & Questions : **Virtual Participants**

**\*Join Audio:** Select how you want to join the call; either by phone or through your computer.



**Participants:** Click here to see the list of participants in the meeting.

**For Q & A:** Click here to ask your questions BUT do not hesitate to ask them verbally in your own language when the time comes!

**Leave Meeting:** Click here to leave the meeting.



**Please keep yourself muted and your video turned off.**

---

# Other housekeeping information

- ✓ We will first give a presentation and show the UHC consultation materials
- ✓ Following the presentation, there will be a period for Questions and Answers
  - ✓ We will first take questions verbally; they will be simultaneously translated
    - please raise your hand and we will turn on your microphone
  - ✓ We will then read questions from the Q & A
- ✓ Please keep your cameras off unless speaking

# Universal Health Coverage indicators (SDG 3.8.1 and 3.8.2 and related)

## Consultation process overview



---

# Outline

1. UHC definition and monitoring
2. Service coverage and lack of financial protection indicators
3. UHC consultation process overview
4. UHC consultation objectives
5. UHC consultation documentation pack
6. The importance of tracking both UHC dimensions
7. Outputs
8. Key dates

# 1. Universal Health Coverage (UHC)

---

UHC **means** everyone, everywhere can receive the **quality health services they need** across the life course **without** facing **financial hardship**.

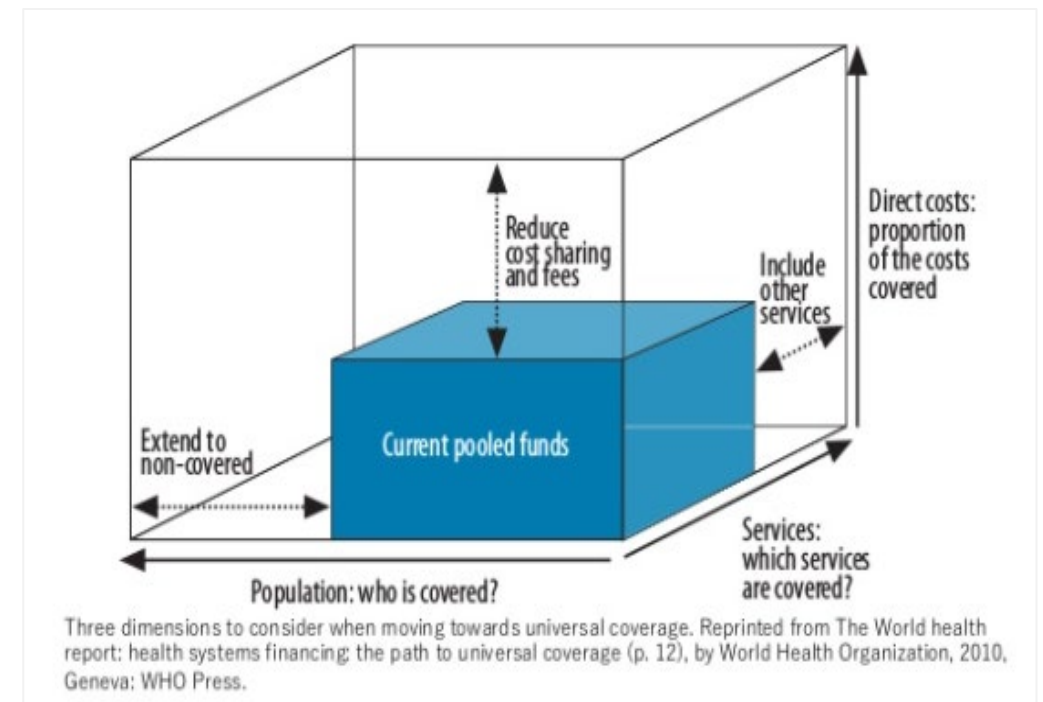
Reaching the goal of UHC by 2030 requires proactive, targeted and accelerated efforts building on strong data and evidence.

To track progress towards UHC with the highest possible quality data WHO is conducting this consultation

## 2. Service coverage and lack of financial protection indicators

Advances in Universal Health Coverage are tracked through indicators on:

- **Service coverage (SDG 3.8.1)**
- **Lack of financial protection (Financial hardship, SDG 3.8.2 and related)**





---

# 1. UHC is an SDG target:

- ✓ **Target 3.8:** Achieve universal health coverage, including financial risk protection, access to quality essential health-care services and access to safe, effective, quality and affordable essential medicines and vaccines for all
- ✓ Target 3.8 has **two sub-targets**: 3.8.1 is focused on the coverage of essential health services while 3.8.2 aims to capture the financial protection dimension of UHC



---

## 1. UHC is an SDG target:

- ✓ The United Nations recognizes **WHO** as the custodian agency for **SDG indicators 3.8.1 and 3.8.2** and the **World Bank** as the co-custodian agency for 3.8.2.
- ✓ WHO support for monitoring financial protection and service coverage is underpinned by a **World Health Assembly resolution\*** on sustainable health financing, universal coverage and social health insurance.

\* Several regional resolutions exist



## 2. UHC Service Coverage Index (SDG 3.8.1)

### Reproductive, maternal, newborn and child health (RMNCH)

1. Family planning (FP)
2. Antenatal care, 4+ visits (ANC)
3. DTP3 immunization (DTP3)
4. Care seeking for suspected pneumonia (Pneumonia)

$$RMNCH = (FP * ANC * DTP3 * Pneumonia)^{1/4}$$

### Infectious diseases (ID)

1. TB treatment (TB)
2. HIV therapy (ART)
3. Insecticide-treated nets (ITN)
4. Basic sanitation (WASH)

$$ID = (TB * ART * ITN * WASH)^{1/4}$$

if high malaria risk

$$ID = (TB * ART * WASH)^{1/3}$$

if low malaria risk

### Noncommunicable diseases (NCD)

1. Hypertension treatment (HPT)
2. Mean fasting plasma glucose (FPG)
3. Tobacco non-use (Tobacco)

$$NCD = (HPT * FPG * Tobacco)^{1/3}$$

### Service capacity and access (Capacité)

1. Hospital bed density (Hospital)
2. Health worker density (HWF)
3. IHR core capacity index (IHR)

$$Capacity = (Hospital * HWF * IHR)^{1/3}$$

[uhc\\_stats@who.int](mailto:uhc_stats@who.int) UHC Service Coverage Index =  $(RMNCH * ID * NCD * Capacity)^{1/4}$  <- Nested geometric average of 14 tracer indicators

## 2. Lack of financial protection indicators

### (Financial hardship-SDG 3.8.2 and related)



#### Incidence of catastrophic OOPs:

- **All regions - SDG 3.8.2-budget share approach:** Proportion of the population with *large* household expenditures on health: greater than 10% of total household's expenditure or income. greater than 25 % of total household's expenditure or income(budget share approach)
- **In WHO/Europe- food, housing, and utilities approach :** The proportion of households with out-of-pocket payments greater than 40% of household capacity to pay

#### Incidence of Impoverishing health spending (related to SDG 1):

people are impoverished or further impoverished below a poverty line because of OOPs

---

## 3. Consultation process

- Consultation on Sustainable Development Goals (SDG) indicators of Universal Health Coverage (UHC) happens every two years
- **Circular letter (C.L.48.2022) informed countries/territories/ areas that the consultation would be virtual through [uhc\\_stats@who.int](mailto:uhc_stats@who.int), the WHO UHC monitoring mailbox**
- Two SDG indicators: SDG 3.8.1 (service coverage) and Financial Protection (3.8.2 and related)
- Each country/territory/area nominated at least one focal point, but ideally, there should be one for service coverage and another one for financial protection indicators
- Countries/territories/areas have about 5 weeks to review the documentation pack

---

## 3. Consultation process

- Once the consultation is closed, there will be **no other opportunities** to incorporate the feedback in the planned update of global international databases
- The country/territory/area level data is based on WHO's quality standards for data publication, as adopted by the Executive Board members during its 111th session.
- The eligibility of the estimates included in the consultation is based on a comparison of statistics produced during the data analysis and those publicly available.

---

## 4. Consultation objectives

- To inform the country/territory/area about WHO's efforts to support the monitoring of UHC at a global, regional and country level and to obtain feedback on this work
- Countries/territories/areas are asked to:
  - ✓ comment on the service coverage and financial protection methods, data sources, and estimates and support comments with evidence or by new data for which the source and method of collection are documented
  - ✓ provide advice on primary data sources that may not have been previously reported or used
  - ✓ share information about any national framework adopted to monitor financial protection in health

---

## 5. Consultation documentation pack sent from [uhc\\_stats@who.int](mailto:uhc_stats@who.int)

### PDF files:

- ✓ **UHC Service Coverage: Index Metadata** - describes the methods for SDG 3.8.1 on service coverage and its components
- ✓ **UHC financial protection (SDG 3.8.2 and related): methods** - describes approach adopted to track financial protection with indicators of catastrophic health spending (SDG 3.8.2 as well as regional definitions were available) and impoverishing health spending (related to SDG 1); **Table of content description OR briefing (WHO European region); potential data sources** (if no estimates are available)

### Excel files:

- ✓ service coverage indicators with indicators' values for SDG 3.8.1 and its components
- ✓ estimates of financial protection indicators with indicators' values for SDG 3.8.2 and related (including regional in WHO Europe)



## 5. Content – Service coverage indicators

- **Sheet 2, Index** includes the data and the methods used to calculate the overall index, sub-indexes and indicators.
  - *Please note that the grey cells are either have already or are currently going through a separate consultation process. Contact [uhc\\_stats@who.int](mailto:uhc_stats@who.int) if you have questions or comments about these numbers and we will connect you with the relevant technical program for discussion.*
- **Sheet 3, Charts** to visualize the time series for the overall index, sub-indexes and indicators
- **Sheet 4, Data sources** used for each data point
- **Sheet 5, Definitions** of each indicator
- **Sheet 6, Acronyms** that are used throughout the spreadsheet



World Health  
Organization

[uhc\\_stats@who.int](mailto:uhc_stats@who.int)

A screenshot of a spreadsheet application. The title bar reads "Draft estimates for Sustainable Development Goal indicator 3.8.1: Universal Health Coverage (UHC) index of the coverage of essential health services." The spreadsheet content includes a paragraph about the WHO's consultation for SDG 3.8.1, a list of worksheets (Index, Charts, Data sources, Definitions, Acronyms) with brief descriptions, and a feedback request to email [uhc\\_stats@who.int](mailto:uhc_stats@who.int). The spreadsheet interface shows columns A through S and rows 1 through 33. The "Index" tab is selected in the bottom navigation bar.

# 5. Financial protection indicators (all regions other than the WHO European Region)

## Financial protection Indicators (1<sup>st</sup> sheet: SDG 3.8.2 & related indicators)

- ✓ Catastrophic health spending as tracked by SDG indicator 3.8.2
- ✓ Impoverishing OOP health spending using various poverty lines  
(relative poverty line defined as 60% of median consumption, and where relevant, international poverty lines of PPP\$1.90\* and PPP\$3.20\* per capita per day)

## Ancillary indicators (2<sup>nd</sup> sheet)

- ✓ Indicators that are routinely produced by national statistical offices

## Financial protection Indicators by type of household where available (3rd sheet)

- ✓ Catastrophic and Impoverishing OOP health spending\* BOTH by age structure of the household and/or head age and/or head gender

## Graphs on SDG 3.8.2 and SDG related indicators (4<sup>th</sup> and 5<sup>th</sup> sheet)

\*for more information on purchasing power parity revision (PPP), please consult <https://pip.worldbank.org/home>; data using the 2011 PPP is available at <https://www.who.int/data/gho/data/themes/topics/financial-protection>

Country name	PER_2000_EN	PER_2006_EN	PER_2008_EN	PER_2009_EN	PER_2010_EN
<b>Draft estimates for SDG &amp; SDG related indicators of financial protection.</b> These draft estimates are for consultation: 2020 and 2021 are new; for other years SDG indicators have NOT been updated; SDG related indicators have been updated.					
<b>Producers</b> The draft estimates in this table have been produced by the World Health Organization and the World Bank. They have been jointly reviewed by the World Bank and the World Health Organization and selected after quality checks - see annex Metadata for SDG Based on consumption.					
<b>Survey identification:</b> country ISO3C, year, survey acronym, version, adaptation where relevant					
<b>Catastrophic health spending as tracked by SDG indicator 3.8.2</b>					
<b>SDG indicators 3.8.2 (SH_XPD_EARN10;SH_XPD_EARN25)</b>	2000	2006	2008	2009	2010
(National) Population with large household expenditures on health as a share of total household expenditure or income (greater than 10%)(%)	11.82	10.74	11.57	10.64	11
(National) Population with large household expenditures on health as a share of total household expenditure or income (greater than 25%)(%)	2.89	1.34	1.56	1.35	1
(Rural) Population with large household expenditures on health as a share of total household expenditure or income (greater than 10%)(%)	0.13	7.86	10.09	8.17	8
(Rural) Population with large household expenditures on health as a share of total household expenditure or income (greater than 25%)(%)	0.04	1.61	2.34	1.55	2
(Urban) Population with large household expenditures on health as a share of total household expenditure or income (greater than 10%)(%)	0.11	11.89	12.14	11.54	12
(Urban) Population with large household expenditures on health as a share of total household expenditure or income (greater than 25%)(%)	0.02	1.23	1.27	1.28	1
<b>Impoverishing health spending (SDG related indicators)</b>					
<b>At the relative poverty line of 60% of daily per capita total household consumption</b>	2000	2006	2008	2009	2010
(National) Impoverished* (% population)	2.05	1.28	1.57	1.45	1
(National) Further impoverished** (% population)	13.07	17.75	18.34	18.27	18
(National) Increase in poverty gap after household expenditures on health (percentage points)	0.80	0.57	0.61	0.57	0
(Rural) Impoverished* (% population)	0.04	1.99	2.47	1.89	2
(Rural) Further impoverished** (% population)	28.35	41.68	44.38	45.54	47
(Rural) Increase in poverty gap after household expenditures on health (percentage points)	0.02	1.19	1.41	1.27	1

## Country name

**Draft estimates for SDG & SDG related indicators of financial protection.**

**These draft estimates are for consultation: 2020 and 2021 are new; for other years SDG indicators have NOT been updated; SDG related indicators have been updated\*\*\***

### Producers

The draft estimates in this table have been produced by the World Health Organization and the World Bank.

They have been jointly reviewed by the World Bank and the World Health Organization and selected after quality checks - see annex Metadata for SDG indicator 3.8.2.

### Based on consumption

Background  
section

Survey identification: country ISO3C, year, survey acronym, version, adaptation where relevant

	iso3c_2006_E	iso3c_2008_E	iso3c_2009_E	iso3c_2010_E	iso3c_2011_E	iso3c_2012_E	iso3c_2013_E
iso3c_2000_E	NAHO_v01_	NAHO_v01_	NAHO_v01_	NAHO_v01_	NAHO_v01_	NAHO_v01_	NAHO_v01_
NNIV_v01_M	M	M	M	M	M	M	M



Country name

Draft estimates for SDG & SDG related indicators of financial protection.

These draft estimates are for consultation: 2020 and 2021 are new; for other years SDG indicators have NOT been updated; SDG related indicators have been updated\*\*\*

Producers

The draft estimates in this table have been produced by the World Health Organization and the World Bank.

They have been jointly reviewed by the World Bank and the World Health Organization and selected after quality checks - see annex Metadata for SDG indicator 3.8.2.

Based on consumption

Survey identification: country ISO3C, year, survey acronym, version, adaptation where relevant	iso3c_2000_E	iso3c_2006_E	iso3c_2008_E	iso3c_2009_E	iso3c_2010_E	iso3c_2011_E	iso3c_2012_E
NNIV_v01_M	M	NAHO_v01_M	NAHO_v01_M	NAHO_v01_M	NAHO_v01_M	NAHO_v01_M	NAHO_v01_M

These draft estimates are for consultation: SDG indicators have NOT been updated; SDG related indicators have been updated\*\*\*

These are draft estimates for consultation: the country/territory/ area is kindly requested to update them. WHO can assist you to do so. Please contact [uhc\\_stats@who.int](mailto:uhc_stats@who.int)\*\*\*

## Country name

### Draft estimates for SDG & SDG related indicators of financial protection.

These draft estimates are for consultation: 2020 and 2021 are new; for other years SDG indicators have NOT been updated; SDG related indicators have been updated\*\*\*

Producers ←

The draft estimates in this table have been produced by the World Health Organization and the World Bank.

They have been jointly reviewed by the World Bank and the World Health Organization and selected after quality checks - see annex Metadata for SDG indicator 3.8.2.

Based on consumption ←

- Based on income
- Based on expenditure

- The draft estimates in this table have been produced by the World Health Organization.
- The draft estimates in this table have been produced by the World Bank.
- The draft estimates in this table have been produced by the country, territory, or area (with or without collaborating with WHO and/or the WB).

Catastrophic health spending as tracked by SDG indicator 3.8.2				
SDG indicators 3.8.2 (SH_XPD_EARN10;SH_XPD_EARN25)	2000	2006	2008	2010
(National) Population with large household expenditures on health as a share of total household expenditure or income (greater than 10%),(%)	1.82	10.74	11.57	10.13
(National) Population with large household expenditures on health as a share of total household expenditure or income (greater than 25%),(%)	2.89	1.61	1.56	1.33

(Rural) Population with large household expenditures on health as a share of total household expenditure or income (greater than 10%),(%)	0.13	7.86	10.09	8.13
(Rural) Population with large household expenditures on health as a share of total household expenditure or income (greater than 25%),(%)	0.04	1.61	2.34	1.56
(Urban) Population with large household expenditures on health as a share of total household expenditure or income (greater than 10%),(%)	0.11	11.89	12.14	11.91
(Urban) Population with large household expenditures on health as a share of total household expenditure or income (greater than 25%),(%)	0.02	1.23	1.27	1.23

Impoverishing health spending (SDG related indicators)				
At the relative poverty line of 60% of daily per capita total household consumption	2000	2006	2008	2010
(National) Impoverished* (% population)	2.09	1.28	1.57	1.43
(National) Further impoverished** (% population)	13.07	17.75	18.34	18.34
(percentage points)	0.80	0.57	0.61	0.59
(Rural) Impoverished* (% population)	0.04	1.99	2.47	1.83
(Rural) Further impoverished** (% population)	28.35	41.68	44.38	45.13
(percentage points)	0.02	1.19	1.41	1.22
(Urban) Impoverished* (% population)	0.01	0.99	1.23	1.13
(Urban) Further impoverished** (% population)	5.04	8.16	8.49	8.23
(percentage points)	0.00	0.32	0.30	0.29

At the poverty line of extreme poverty of PPP2017\$3.65 a day per capita***				
2000	2006	2008	2010	
(National) Impoverished* (% population)	1.98	1.43	1.32	1.03
(National) Further impoverished** (% population)	26.59	18.53	13.72	13.72
(percentage points)	1.33	0.59	0.46	0.46
(Rural) Impoverished* (% population)	2.03	2.38	2.77	2.77
(Rural) Further impoverished** (% population)	45.95	42.72	36.18	36.18
(percentage points)	0.02	1.22	1.20	1.17

(Urban) Impoverished* (% population)	1.95	1.05	0.78	0.60	0.83	0.49	0.44	0.51	0.45	0.23	0.31	0.24	0.24	0.16	0.52	0.55
(Urban) Further impoverished** (% population)	16.43	8.83	5.22	4.66	3.46	2.97	2.51	2.18	2.23	2.21	1.99	1.91	1.42	1.32	3.73	3.15
(percentage points)	0.01	0.34	0.18	0.19	0.12	0.11	0.09	0.09	0.07	0.05	0.05	0.04	0.04	0.04	0.10	0.09

## Catastrophic health spending as tracked by SDG indicator 3.8.2

### SDG indicators 3.8.2 (SH\_XPD\_EARN10;SH\_XPD\_EARN25)

(National) Population with large household expenditures on health as a share of total household expenditure or income (greater than 10%),(%)

(National) Population with large household expenditures on health as a share of total household expenditure or income (greater than 25%),(%)

(Rural) Population with large household expenditures on health as a share of total household expenditure or income (greater than 10%),(%)

(Rural) Population with large household expenditures on health as a share of total household expenditure or income (greater than 25%),(%)

(Urban) Population with large household expenditures on health as a share of total household expenditure or income (greater than 10%),(%)

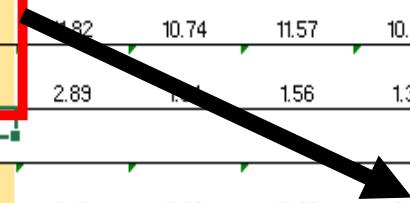
(Urban) Population with large household expenditures on health as a share of total household expenditure or income (greater than 25%),(%)

(Rural) Population with large household expenditures on health as a share of total household expenditure or income (greater than 10%),(%)

(Rural) Population with large household expenditures on health as a share of total household expenditure or income (greater than 25%),(%)

(Urban) Population with large household expenditures on health as a share of total household expenditure or income (greater than 10%),(%)

(Urban) Population with large household expenditures on health as a share of total household expenditure or income (greater than 25%),(%)



Impoverishing health spending (SDG related indicators)					
At the relative poverty line of 60% of daily per capita total household consumption	2000	2006	2008	2009	2010
(National) Impoverished* (% population)	2.09	1.28	1.57	1.46	1.48
(National) Further impoverished** (% population)	15.87	17.75	18.34	18.27	18.73
(National) Increase in poverty gap after household expenditures on health (percentage points)	0.80	0.57	0.61	0.57	0.57
(Rural) Impoverished* (% population)	0.04	1.99	2.47	1.89	2.00
(Rural) Further impoverished** (% population)	28.35	41.68	44.38	45.54	47.32
(Rural) Increase in poverty gap after household expenditures on health (percentage points)	0.02	1.19	1.41	1.27	1.32
(Urban) Impoverished* (% population)	0.01	0.99	1.23	1.31	1.22
(Urban) Further impoverished** (% population)	5.04	8.16	8.49	8.25	8.63
(Urban) Increase in poverty gap after household expenditures on health (percentage points)	0.00	0.32	0.30	0.31	0.31

At the poverty line of extreme poverty of PPP2017\$3.65 a day per capita***					
(National) Impoverished* (% population)	1.98	1.43	1.32	1.05	1.24
(National) Further impoverished** (% population)	26.59	18.53	13.72	13.23	11.40
(National) Increase in poverty gap after household expenditures on health (percentage points)	1.33	0.59	0.46	0.43	0.35
(Rural) Impoverished* (% population)	2.03	2.38	2.77	2.26	2.40
(Rural) Further impoverished** (% population)	45.95	42.72	36.18	36.56	35.87
(Rural) Increase in poverty gap after household expenditures on health (percentage points)	0.02	1.22	1.20	1.10	1.00
(Urban) Impoverished* (% population)	1.95	1.05	0.78	0.60	0.83
(Urban) Further impoverished** (% population)	16.43	8.83	5.22	4.66	3.46
(Urban) Increase in poverty gap after household expenditures on health (percentage points)	0.01	0.34	0.18	0.19	0.12

At the poverty line of extreme poverty of PPP2017\$2.15 a day per capita***					
(National) Impoverished* (% population)	0.56	0.61	0.47	0.42	0.30
(National) Further impoverished** (% population)	9.82	6.21	4.05	3.33	2.55
(National) Increase in poverty gap after household expenditures on health (percentage points)	0.66	0.23	0.14	0.12	0.08
(Rural) Impoverished* (% population)	4.91	1.58	1.45	1.32	0.99
(Rural) Further impoverished** (% population)	23.06	17.85	12.77	11.22	8.58
(Rural) Increase in poverty gap after household expenditures on health (percentage points)	0.02	0.59	0.45	0.40	0.30
(Urban) Impoverished* (% population)	1.33	0.22	0.09	0.09	0.05
(Urban) Further impoverished** (% population)	2.87	1.54	0.75	0.43	0.41
(Urban) Increase in poverty gap after household expenditures on health (percentage points)	0.00	0.08	0.02	0.02	0.01

Impoverishing health spending (SDG related indicators)														
At the relative poverty line of 60% of daily per capita total household consumption														
(National) Impoverished* (% population)														
(National) Further impoverished** (% population)														
(National) Increase in poverty gap after household expenditures on health (percentage points)														
8.84	8.45	8.75	8.75	8.44	8.29	8.76	8.41	8.58	9.17	11.62				
0.33	0.34	0.34	0.28	0.24	0.23	0.23	0.24	0.24	0.28	0.37				

At the poverty line of extreme poverty of PPP2017\$3.65 a day per capita***														
(National) Impoverished* (% population)														
(National) Further impoverished** (% population)														
(National) Increase in poverty gap after household expenditures on health (percentage points)														
0.11	0.09	0.09	0.07	0.05	0.05	0.04	0.04	0.04	0.10	0.09				

At the poverty line of extreme poverty of PPP2017\$2.15 a day per capita***														
(National) Impoverished* (% population)														
(National) Further impoverished** (% population)														
(National) Increase in poverty gap after household expenditures on health (percentage points)														
0.01	0.01	0.01	0.00	0.00	0.00	0.00	0.00	0.00	0.00	0.00				







## Country name

### Draft estimates for SDG & SDG related indicators of financial protection by age structure of the household and/or head gender and/or head age

These draft estimates are for consultation: the most recent year might differ from the most recent years for which estimates are available at national/rural/urban levels. If the disaggregation of impoverishing health spending indicators is available, they have been updated\*\*\*

#### Producers

The draft estimates in this table have been produced by the World Health Organization and the World Bank.

They have been jointly reviewed by the World Bank and the World Health Organization and selected after quality checks - see annex Metadata for SDG indicator 3.8.2.

#### Based on consumption

Survey identification: country ISO3 code, year, survey acronym, version, adaptation where relevant

iso3c_2006_E	iso3c_2008_E	iso3c_2009_E	iso3c_2010_E	iso3c_2011_E	iso3c_2012_E	iso3c_2013_E	iso3c_2014_E	iso3c_2015_E	iso3c_2016_E	iso3c_2017_E	iso3c_2018_E	iso3c_2019_E	iso3c_2021_E
NAHO_v01_	NAHO_v01_	NAHO_v01_	NAHO_v01_	NAHO_v01_	NAHO_v01_	NAHO_v01_	NAHO_v01_	NAHO_v01_	NAHO_v01_	NAHO_v01_	NAHO_v01_	NAHO_v01_	NAHO_v01_
M	M	M	M	M	M	M	M	M	M	M	M	M	M

### SDG indicators 3.8.2 by household type (SH\_XPD\_EARN10)

#### Population with household expenditures on health as a share of total household expenditure greater than 10%,(% within each type of household)

	2006	2008	2009	2010	2011	2012	2013	2014	2015	2016	2017	2018	2019	2021
a. Adults only (20-59 years old)	10.09	10.68	10.64	NA	NA	12.38	NA	8.64	NA	NA	NA	NA	8.64	12.38
b. Adults with children and adolescents	9.04	9.50	8.82	NA	NA	9.48	NA	6.98	NA	NA	NA	NA	6.11	10.16
c. Multigenerational households	14.29	16.38	14.02	NA	NA	14.37	NA	12.03	NA	NA	NA	NA	10.96	17.28
d. Adults with older persons	16.17	16.86	15.60	NA	NA	18.03	NA	14.66	NA	NA	NA	NA	13.47	18.15
e. Only older adults (>=60 years old)	11.42	13.22	14.13	NA	NA	14.67	NA	13.00	NA	NA	NA	NA	12.37	13.84
f. Only members below 20 years old	NA	NA	NA	NA	NA	NA	NA	NA	NA	NA	NA	NA	NA	NA
g. Multigenerational and/or Adults with older persons (c and d)	14.59	16.46	14.29	NA	NA	15.01	NA	12.59	NA	NA	NA	NA	11.86	17.60
h. Head is male	10.69	11.51	10.50	11.35	11.18	11.57	10.56	9.14	8.26	8.58	7.96	9.16	8.60	12.01
i. Head is female	10.95	11.83	11.19	11.10	11.42	12.26	10.16	9.30	8.24	8.10	8.00	9.36	7.90	13.29
j. Head is below 60 years old	9.43	10.14	9.50	NA	NA	10.12	NA	7.73	NA	NA	NA	NA	6.86	11.79
k. Head is 60 years or older	15.00	16.41	14.25	NA	NA	15.96	NA	12.85	NA	NA	NA	NA	12.17	16.32

Country name

Draft estimates for SDG & SDG related indicators of financial protection by age structure of the household and/or head gender and/or head age

These draft estimates are for consultation: the most recent year might differ from the most recent years for which estimates are available at national/rural/urban levels. If the disaggregation of impoverishing health spending indicators is available, they have been updated\*\*\*

Producers

The draft estimates in this table have been produced by the World Health Organization and the World Bank.

They have been jointly reviewed by the World Bank and the World Health Organization and selected after quality checks - see annex M

Based on consumption

Survey identification: country ISO3 code, year, survey acronym, version, adaptation where relevant

iso3c_2006_E	iso3c_2008_E	iso3c_2009_E	iso3c_2010_E
NAHO_v01_	NAHO_v01_	NAHO_v01_	NAHO_v01_
M	M	M	M

### SDG indicators 3.8.2 by household type (SH\_XPD\_EARN10)

Population with household expenditures on health as a share of total household expenditure greater than 10%,(% within each type of household)

a. Adults only (20-59 years old)

b. Adults with children and adolescents

c. Multigenerational households

d. Adults with older persons

e. Only older adults (>=60 years old)

f. Only members below 20 years old

g. Multigenerational and/or Adults with older persons (c and d)

h. Head is male

i. Head is female

j. Head is below 60 years old

k. Head is 60 years or older

### SDG indicators 3.8.2 by household type (SH\_XPD\_EARN10)

Population with household expenditures on health as a share of total household expenditure greater than 10%,(% within each type of household)

a. Adults only (20-59 years old)

b. Adults with children and adolescents

c. Multigenerational households

d. Adults with older persons

e. Only older adults (>=60 years old)

f. Only members below 20 years old

g. Multigenerational and/or Adults with older persons (c and d)

h. Head is male

i. Head is female

j. Head is below 60 years old

k. Head is 60 years or older

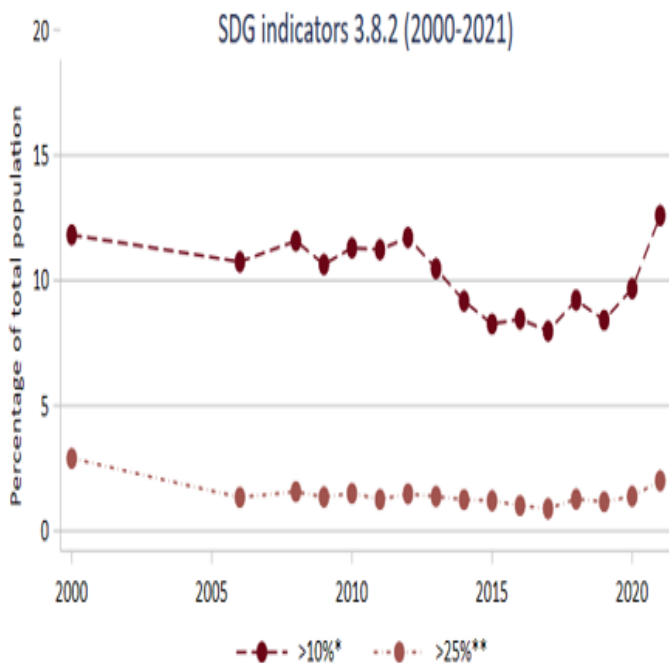
	2006	2008	2009	2010
a. Adults only (20-59 years old)	10.09	10.68	10.64	NA
b. Adults with children and adolescents	9.04	9.50	8.82	NA
c. Multigenerational households	14.29	16.38	14.02	NA
d. Adults with older persons	16.17	16.86	15.60	NA
e. Only older adults (>=60 years old)	11.42	13.22	14.13	NA
f. Only members below 20 years old	NA	NA	NA	NA
g. Multigenerational and/or Adults with older persons (c and d)	14.59	16.46	14.29	NA
h. Head is male	10.69	11.51	10.50	11.35
i. Head is female	10.95	11.83	11.19	11.10
j. Head is below 60 years old	9.43	10.14	9.50	NA
k. Head is 60 years or older	15.00	16.41	14.25	NA

## Country name: Trends in SDG indicators 3.8.2

Draft estimates for SDG & SDG related indicators of financial protection.

These draft estimates are for consultation: 2020 and 2021 are new; for other years SDG indicators have NOT been updated\*\*\*

Producer  
The draft estimates in this table have been produced by the World Health Organization and the World Bank.  
Based on consumption



\*Population with large household expenditures on health as a share of total household expenditure or income (greater than 10%)  
\*\*Population with large household expenditures on health as a share of total household expenditure or income (greater than 25%)

Source: (draft) survey-based estimates

Produced for the WHO 2023 consultation on UHC SDG & SDG related indicators

[uhc\\_stats@who.int](mailto:uhc_stats@who.int)

## Country name: Trends in related indicators

Draft estimates for SDG & SDG related indicators of financial protection.

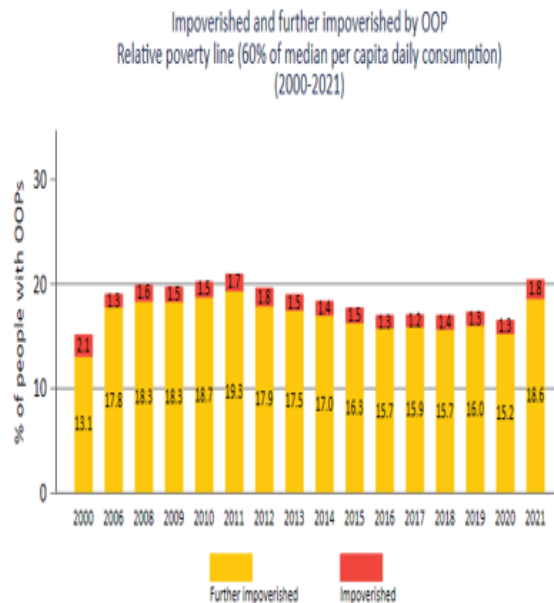
These draft estimates are for consultation: 2020 and 2021 are new; SDG related indicators have been updated\*\*\*

Producer  
The draft estimates in this table have been produced by the World Health Organization and the World Bank.  
Based on consumption

This worksheet shows trends in the proportion of the population impoverished and further impoverished using various poverty lines (where available).  
The first graph is based on the relative poverty line of 60% of daily per capita median total household consumption.

Scroll down to see:

the second graph based on the extreme poverty line of PPP2017\$3.65 a day per capita, and a third graph based extreme poverty line of PPP2017\$2.15 a day per capita.



Notes:

Further impoverished corresponds to poor people with OOPs.

Impoverished corresponds to people pushed into poverty due to OOPs.

Source: (draft) survey-based estimates.

Produced for the WHO 2023 consultation on UHC SDG & SDG related indicators

# 5. Financial protection indicators-WHO European Region

## Regional indicators (1<sup>st</sup> sheet, WHO/Europe method):

- ✓ CATAstrophic health spending using basic needs (food, housing, and utilities) approach
- ✓ IMPOVerishing OOP health spending (relative poverty line, also reflecting basic needs)

## Global Indicators (2<sup>nd</sup> sheet, WHO/WB methods):

- ✓ CATAstrophic health spending as tracked by **SDG indicator 3.8.2**
- ✓ IMPOVerishing OOP health spending using various poverty lines

(relative poverty line defined as 60% of median consumption, and where relevant, international poverty lines of PPP\$1.90\* and PPP\$3.20\* per capita per day)

## Global ancillary indicators (3rd sheet):

- ✓ Indicators that are routinely produced by national statistical offices

## Financial protection Indicators by type of household where available (4th sheet)

- ✓ Global indicator of CATAstrophic and IMPOVerishing OOP health spending BOTH by age structure of the household and/or head age and/or head gender

Country name	2006	2007	2008	2009	2010	2011	2012	2013	2014	2015	2016	2017	2018
<b>Indicator R1: proportion of households with catastrophic health spending, by year and consumption quintile</b>													
Proportion of households with out-of-pocket payments greater than 40% of capacity to pay													
All households	1.03	1.05	1.16	1.23	1.46	1.39	1.66	1.44	2.03	2.03	1.67	1.53	1.86
Poorest	1.56	1.70	1.92	2.15	3.68	3.05	3.51	3.55	5.31	5.19	5.55	4.54	6.38
2nd	0.45	0.39	0.32	0.48	0.66	0.37	0.49	0.34	0.40	0.60	0.57	0.55	0.58
3rd	0.68	0.57	0.42	0.38	0.47	0.65	0.65	0.44	0.51	0.64	0.41	0.55	0.58
4th	0.77	1.02	0.98	0.70	0.61	1.04	0.83	0.66	1.15	1.34	0.52	0.84	0.79
Richest	1.66	1.56	2.18	2.47	1.88	1.85	2.81	2.24	2.79	2.38	1.33	1.18	0.95
<b>Indicator R2: proportion of households with impoverishing health spending, by year</b>													
Proportion of households at risk of impoverishment after out-of-pocket payments													
Further impoverished	0.18	0.15	0.15	0.28	0.48	0.39	0.47	0.46	0.65	0.63	0.68	0.55	0.80
Impoverished	0.02	0.02	0.04	0.03	0.04	0.03	0.04	0.07	0.09	0.13	0.11	0.12	0.13
At risk of impoverishment	0.28	0.37	0.36	0.49	0.57	0.43	0.45	0.67	0.70	0.63	0.54	0.68	0.86
Not at risk of impoverishment	67.76	70.18	70.69	68.96	68.12	68.42	67.78	68.54	67.81	68.80	71.24	71.68	71.46
No out-of-pocket payments	31.77	29.28	28.75	30.25	30.79	30.73	31.27	30.25	30.74	29.82	27.43	26.97	26.76
Data source:	Country source												
Notes:	Estimates prepared for WHO Europe by national experts and calculated using household sampling weights Link to any published country report												
Technical notes:	R1: uses a country-specific poverty line based on household spending to meet basic needs R2: households 'at risk of impoverishment' come within 120% of the poverty line after out-of-pocket payments												

Country/territory/area name	2006	2007	2008	2009	2010	2011	2012	2013	2014	2015	2016	2017	2018	2019	2020
<b>Indicator R1: proportion of households with catastrophic health spending, by year and consumption quintile</b>															
Proportion of households with out-of-pocket payments greater than 40% of capacity to pay															
All households	1.03	1.05	1.16	1.23	1.46	1.39	1.66	1.44	2.03	2.03	1.67	1.53	1.86	1.59	2.86
Poorest	1.56	1.70	1.92	2.15	3.68	3.05	3.51	3.55	5.31	5.19	5.55	4.54	6.38	5.42	10.76
2nd	0.45	0.39	0.32	0.48	0.66	0.37	0.49	0.34	0.40	0.60	0.57	0.55	0.58	0.61	0.61
3rd	0.68	0.57	0.42	0.38	0.47	0.65	0.65	0.44	0.51	0.64	0.41	0.55	0.58	0.47	0.59
4th	0.77	1.02	0.98	0.70	0.61	1.04	0.83	0.66	1.15	1.34	0.52	0.84	0.79	0.63	1.11
Richest	1.66	1.56	2.18	2.47	1.88	1.85	2.81	2.24	2.79	2.38	1.33	1.18	0.95	0.82	1.20

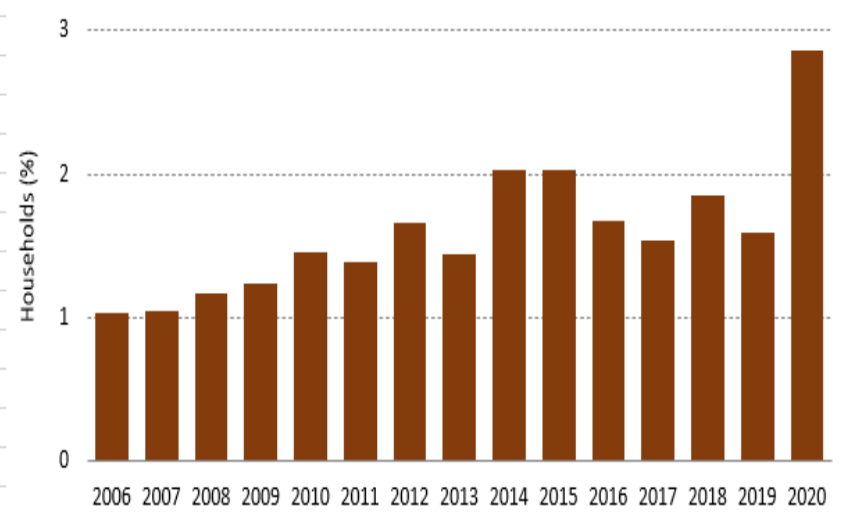
Country/territory/area name	2006	2007	2008	2009	2010	2011	2012	2013	2014	2015	2016	2017	2018	2019	2020
<b>Indicator R2: proportion of households with impoverishing health spending, by year</b>															
Proportion of households at risk of impoverishment after out-of-pocket payments															
Further impoverished	0.18	0.15	0.15	0.28	0.48	0.39	0.47	0.46	0.65	0.63	0.68	0.55	0.80	0.71	1.35
Impoverished	0.02	0.02	0.04	0.03	0.04	0.03	0.04	0.07	0.09	0.13	0.11	0.12	0.13	0.09	0.27
At risk of impoverishment	0.28	0.37	0.36	0.49	0.57	0.43	0.45	0.67	0.70	0.63	0.54	0.68	0.86	0.70	1.05
Not at risk of impoverishment	67.76	70.18	70.69	68.96	68.12	68.42	67.78	68.54	67.81	68.80	71.24	71.68	71.46	71.45	68.19
No out-of-pocket payments	31.77	29.28	28.75	30.25	30.79	30.73	31.27	30.25	30.74	29.82	27.43	26.97	26.76	27.05	29.14

Data source: survey acronym

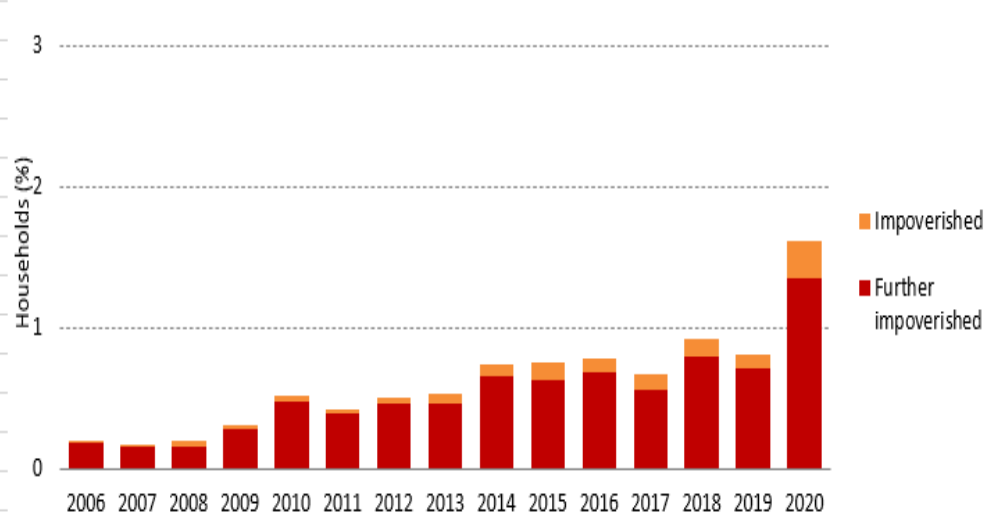
Notes: Estimates prepared for WHO Europe by national experts and calculated using household sampling weights  
[Link to any published country report](#)

Technical notes: R1: uses a country-specific poverty line based on household spending to meet basic needs  
R2: households 'at risk of impoverishment' come within 120% of the poverty line after out-of-pocket payments

**R1: Proportion of households with catastrophic health spending**



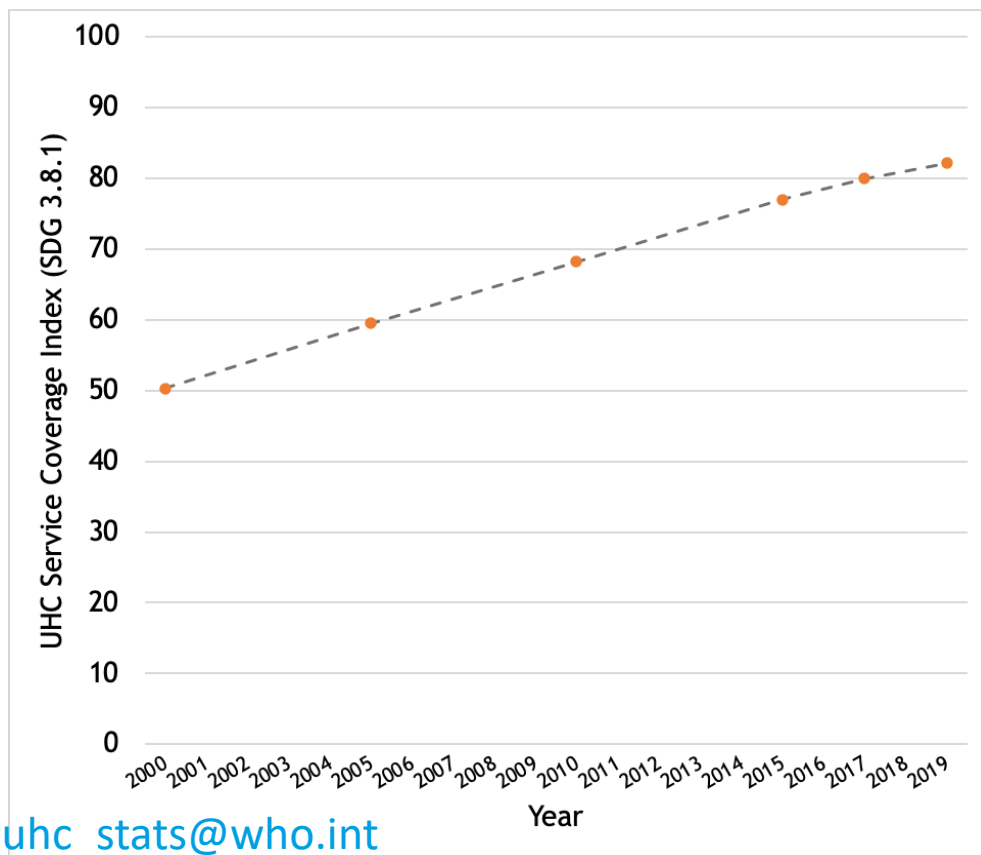
**R2: Proportion of households with impoverishing health spending**



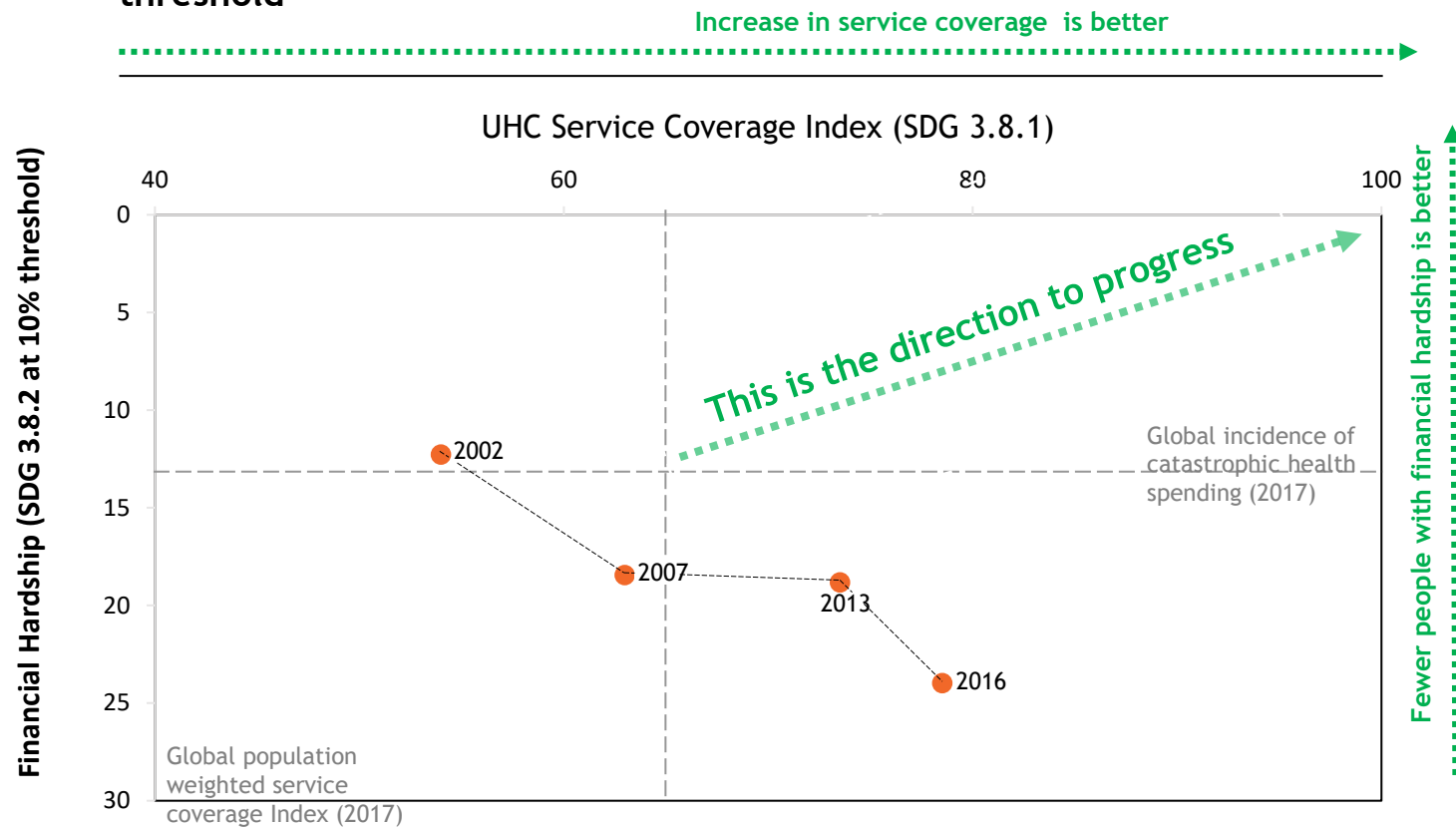
## 6. It is critical to track both UHC dimensions

A focus on one dimension only could be misleading

Progress in service coverage as tracked by only UHC SDG indicator 3.8.1



Progress in service coverage as tracked by UHC SDG indicator 3.8.1 and catastrophic health spending as tracked by SDG 3.8.2 indicator at the 10% threshold



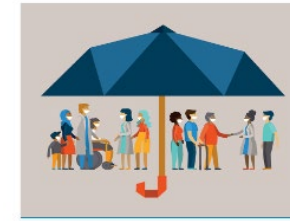
Notes: The vertical dotted line corresponds to the 2017 global incidence rate of catastrophic health spending (13.2%) defined as the proportion of the population with household out-of-pocket health expenditures exceeding 10% of household budget. The horizontal dotted line corresponds to the 2017 global population-weighted average service coverage (65). Country level FH trends are based on observed survey-based estimates available to WHO as of December 15, 2021 and will be available soon at [WHO Global Health Observatory database](https://www.who.int/databases/who-global-health-observatory).

## 7. Outputs: Reports

The country-level data is also featured in:

- ✓ **Global reports to be released in 2023:**
  - UHC Global Monitoring Report (GMR)
  - HLM Report (UNGA)
  - SDG Reports
- ✓ **Regional and country/territories/areas reports**

### Global monitoring reports



2021 on Universal Health Coverage



2021 on financial protection in health



2019 on financial protection in health



2017 on Universal Health Coverage

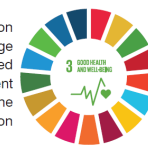


Tracking Universal Health Coverage in the WHO African Region, 2022



Regional report

Monitoring progress on universal health coverage and the health-related Sustainable Development Goals in the South-East Asia Region



### 2022 update

SDGs, UHC and financial protection:  
Leaving no one behind



uhc\_stats@who.int

WHO- European region – regional and country level reports June 2023



## 7. Outputs: Updated Global database(s)

Following the consultation, UHC indicators will become accessible in several international databases:

### **The UNSD SDG data portal – July 2023**

(SDG 3.8.1 and SDG 3.8.2 indicators)

- <https://unstats.un.org/sdgs/indicators/database/>

### **The WHO Global Health Observatory (GHO) database - September 2023**

(SDG 3.8.1 and all financial protection indicators – SDG 3.8.2 and related including regional definitions)

- <https://www.who.int/data/gho/data/themes/topics/financial-protection/>

### **The World Bank HEFPI data portal - TBD**

(SDG 3.8.1 and financial protection indicators – SDG 3.8.2 and related).

- <https://datatopics.worldbank.org/health-equity-and-financial-protection/>

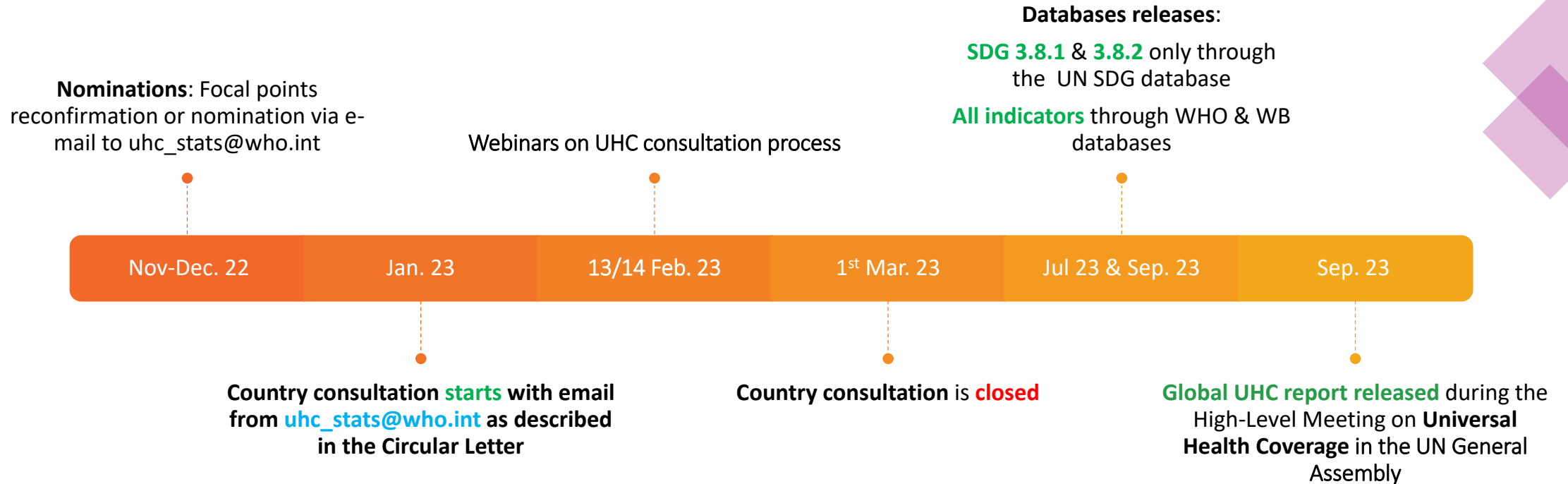
### **The European Health Information Gateway (regional indicators of financial protection)**

<https://gateway.euro.who.int/en/datasets/uhcfp/>



uhc\_stats@who.int

# Important key dates



---

## Contact details :

- *General:* [uhc\\_stats@who.int](mailto:uhc_stats@who.int)

- *Specific to service coverage:*

**subject heading (SDG 3.8.1) - [uhc\\_stats@who.int](mailto:uhc_stats@who.int)**

- *Specific to (the lack of) financial protection*

**subject heading (SDG 3.8.2 and related)**

All other regions: [uhc\\_stats@who.int](mailto:uhc_stats@who.int)

WHO European region : [uhc\\_stats@who.int](mailto:uhc_stats@who.int) & [euhsf@who.int](mailto:euhsf@who.int)

(WHO European regional indicators)

---

# We welcome your questions

- ✓ We will first give a presentation and show the UHC consultation materials
- ✓ Following the presentation, there will be a period for Questions and Answers
  - ✓ We will first take questions verbally – please raise your hand and we will turn on your microphone
  - ✓ We will then read questions from the Q & A– please enter your questions in the Q & A at any point and these will be read at one time by the panelists
- ✓ Please keep your cameras off unless speaking