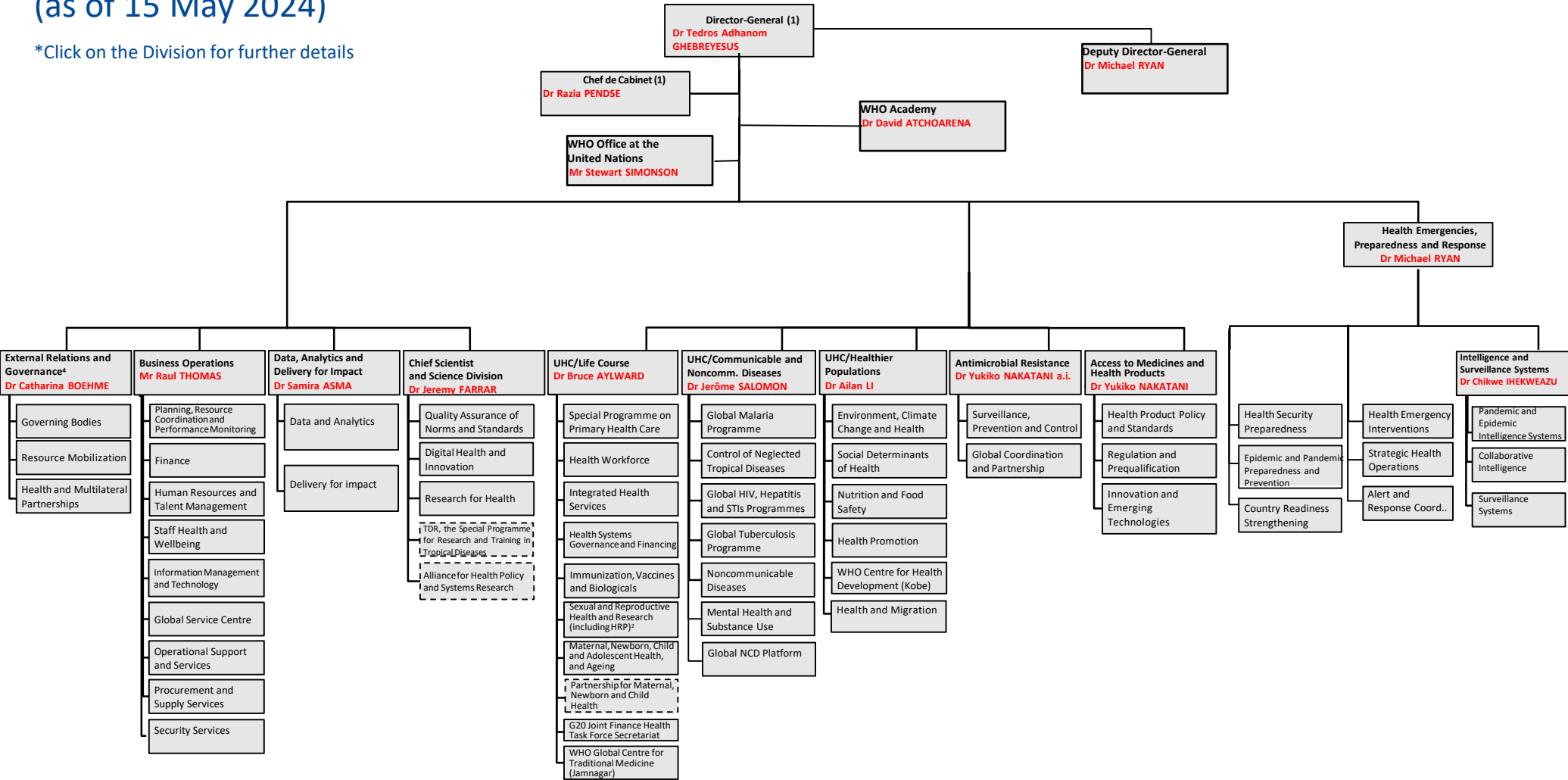


# World Health Organization Headquarters\*

(as of 15 May 2024)

\*Click on the Division for further details



- (1) Includes: Office of the Director General; Chief Nurse Office; Compliance and Risk Management and Ethics (CRE); Country Strategy and Support (CSS); Communication (DCO); Envoy for Multilateral Affairs (EMA); Evaluation Unit (EVL); Global Board of Appeal (GBA); Gender, Rights and Equity - Diversity, Equity and Inclusion (GRE); Global Preparedness Monitoring Board (GPMB); IOAC; Office of Internal Oversight Services (IOS); Office of the Legal Counsel (LEG); Office of the Ombudsperson and Mediation Services (OMB); Polio Eradication and Polio Transition Programme (POL); Prevention and Response to Sexual Exploitation (PRS); Transformation Implementation and Change (TIC).
- (2) Research agenda coordinated with Chief Scientist

# Antimicrobial Resistance

Dr Yukiko NAKATANI a.i. ([nakataniy@who.int](mailto:nakataniy@who.int) )

Full Name	Department	eMail
HUTIN, Doctor Yvan J.-f.	HQ/SPC Surveillance, Prevention and Control	<a href="mailto:hutiny@who.int">hutiny@who.int</a>
NYEMAZI, Doctor Jean Pierre (a.i.)	HQ/GCP Global Coordination and Partnership	<a href="mailto:nyemazij@who.int">nyemazij@who.int</a>



# Business Operations

Mr Raul THOMAS ( [thomasr@who.int](mailto:thomasr@who.int) )

Full Name	Department	eMail
HOLLO, Mr Imre	HQ/PRP Planning Resource Coordination and Per Monitoring	<a href="mailto:holloi@who.int">holloi@who.int</a>
KYRIACOU, Mr George	HQ/FNM Finance (Comptroller)	<a href="mailto:kyriacoug@who.int">kyriacoug@who.int</a>
CRONIN, Mr Patrick (a.i.)	HQ/HRT Human Resources and Talent Management	<a href="mailto:croninp@who.int">croninp@who.int</a>
ZITOUN, Doctor Flavien (a.i.)	HQ/SHW Staff Health and Wellbeing	<a href="mailto:zitounf@who.int">zitounf@who.int</a>
GURUBACHARYA, Mr Biswamber (a.i.)	HQ/IMT Information Management and Technology	<a href="mailto:gurubacharyab@who.int">gurubacharyab@who.int</a>
KERVINIO, Mr Yann	HQ/GSC Global Service Centre	<a href="mailto:kervinoy@who.int">kervinoy@who.int</a>
EL-KHODARY, Mr Hatem	HQ/OSS Operational Support and Services	<a href="mailto:elkhodaryh@who.int">elkhodaryh@who.int</a>
KASTNER, Ms Angela	HQ/SUP Procurement and Supply Services	<a href="mailto:kastnera@who.int">kastnera@who.int</a>
BERMUDEZ, Angelito	HQ/SEC Security Services	<a href="mailto:bermudezan@who.int">bermudezan@who.int</a>



# Data, Analytics and Delivery for Impact

Dr Samira ASMA ([asmas@who.int](mailto:asmas@who.int))

Full Name	Department	eMail
MAC FEELY, Mr Stephen	HQ/DNA Data and Analytics	<a href="mailto:macfeelys@who.int">macfeelys@who.int</a>
URSU, Doctor Pavel	HQ/DFI Delivery for Impact	<a href="mailto:ursup@who.int">ursup@who.int</a>



# Director-General's Office

Director-General: Dr Tedros Adhanom GHEBREYESUS ([DGOffice@who.int](mailto:DGOffice@who.int) )

Deputy Director-General and Executive Director Health Emergencies: Dr Michael RYAN ([ryanm@who.int](mailto:ryanm@who.int) )

Chef de Cabinet: Dr Razia PENDSE ([pendsera@who.int](mailto:pendsera@who.int) )

## Director General's Office Senior Leadership

Full Name	Directors	eMail
ACHARYA, Doctor Shambhu Prasad	HQ/CSS Country Strategy and Support	<a href="mailto:acharyas@who.int">acharyas@who.int</a>
EDELMANN, Mr Robert	HQ/OMB Office of the Ombudsperson and Mediation Services	<a href="mailto:edelmannr@who.int">edelmannr@who.int</a>
BRIAND, Doctor Sylvie	HQ/GPMB Global Preparedness Monitoring Board	<a href="mailto:briands@who.int">briands@who.int</a>
BROSTRØM, Doctor Søren	HQ/TIC Senior Adviser, Organizational Change	<a href="mailto:brostroms@who.int">brostroms@who.int</a>
EL-HALABI, Ms Shenaaz	HQ/ODG Office of the Director-General	<a href="mailto:elhalabis@who.int">elhalabis@who.int</a>
GAMHEWAGE, Doctor Gaya Manori	HQ/PRS Preventing and Responding to Sexual Exploitation	<a href="mailto:gamhewageg@who.int">gamhewageg@who.int</a>
IGARASHI, Doctor Masahiro	HQ/EVL Evaluation Unit	<a href="mailto:igarashim@who.int">igarashim@who.int</a>
EL YASSIR, Ms Alia	HQ/GRE Gender, Rights and Equity - Diversity, Equity and Inclusion	<a href="mailto:elyassira@who.int">elyassira@who.int</a>
LEVY, Ms Gabriella Stern	HQ/DCO Communications	<a href="mailto:sterng@who.int">sterng@who.int</a>
MC CLENNON, Ms Lisa Marie	HQ/IOS Office of Internal Oversight Services	<a href="mailto:mcclennonl@who.int">mcclennonl@who.int</a>
MLITZKE, Mr Andreas Horst	HQ/CRE Compliance and Risk Management and Ethics	<a href="mailto:mlitzkea@who.int">mlitzkea@who.int</a>
O' LEARY, Mr Aidan	HQ/POL Polio Eradication	<a href="mailto:olearya@who.int">olearya@who.int</a>
SEYDOUX, Ms Stephanie	HQ/EMA Envoy for Multilateral Affairs	<a href="mailto:seydoux@who.int">seydoux@who.int</a>
SIMONSON, Mr Stewart	HQ/WUN WHO Office at the United Nations	<a href="mailto:simonsons@who.int">simonsons@who.int</a>
TUIPULOTU, Doctor Amelia	HQ/CNO Chief Nurse Office	<a href="mailto:tuipulotua@who.int">tuipulotua@who.int</a>
WALTON, Mr Derek Antony Ruffel	HQ/LEG Office of the Legal Counsel	<a href="mailto:waltond@who.int">waltond@who.int</a>

## Academy

Full Name	Executive Director	eMail
ATCHOARENA, Doctor David	WHO Academy	<a href="mailto:atchoarenad@who.int">atchoarenad@who.int</a>

## FCTC

Full Name		eMail
BLANCO MARQUIZO, Doctor Adriana	Head of Convention Secretariat	<a href="mailto:blancoa@who.int">blancoa@who.int</a>



# External Relations and Governance

Dr Catharina BOEHME ([boehmec@who.int](mailto:boehmec@who.int))

Full Name	Department	eMail
SILBERSCHMIDT, Doctor Gaudenz Ulrich (a.i.)	HQ/GBS Governing Bodies	<a href="mailto:silberschmidtg@who.int">silberschmidtg@who.int</a>
THORNTON, Mr Daniel Vernon	HQ/CRM Coordinated Resource Mobilization	<a href="mailto:thorntond@who.int">thorntond@who.int</a>
SILBERSCHMIDT, Doctor Gaudenz Ulrich	HQ/HMP Health and Multilateral Partnerships	<a href="mailto:silberschmidtg@who.int">silberschmidtg@who.int</a>



# UHC/Healthier Populations

Dr Ailan LI ([lia@who.int](mailto:lia@who.int))

Full Name	Department	eMail
NEIRA, Doctor Maria Purificacion	HQ/ECH Environment, Climate Change and Health	<a href="mailto:neiram@who.int">neiram@who.int</a>
KRUG, Doctor Etienne G.G.	HQ/SDH Social Determinants of Health	<a href="mailto:kruge@who.int">kruge@who.int</a>
BRANCA, Doctor Francesco	HQ/NFS Nutrition and Food Safety	<a href="mailto:brancaf@who.int">brancaf@who.int</a>
KRECH, Doctor Ruediger	HQ/HPR Health Promotion HEP	<a href="mailto:krechr@who.int">krechr@who.int</a>
BARBER, Doctor Sarah Louise	HQ/WKC WHO Centre for Health Development (Kobe)	<a href="mailto:barbers@who.int">barbers@who.int</a>
SEVERONI, Doctor Santino	HQ/PHM Health and Migration Programme	<a href="mailto:severonis@who.int">severonis@who.int</a>



# Access to Medicines and Health Products

Dr Yukiko NAKATANI ([nakataniy@who.int](mailto:nakataniy@who.int) )

Full Name	Department	eMail
FORTE, Doctor Gilles Bernard	HQ/IET Innovation and Emerging Technologies	<a href="mailto:forteg@who.int">forteg@who.int</a>
GASPAR, Doctor Rogerio Paulo	HQ/RPQ Regulation and Prequalification	<a href="mailto:gasparr@who.int">gasparr@who.int</a>
MUBANGIZI, Doctor Deusdedit	HQ/HPS Health Product Policy and Standards	<a href="mailto:mubangizid@who.int">mubangizid@who.int</a>





# Chief Scientist and Science Division

Dr Jeremy FARRAR ([farrari@who.int](mailto:farrari@who.int))

Full Name	Department	eMail
SHEIKH, Doctor Mubashar Riaz	HQ/QNS Quality Assurance of Norms and Standards	<a href="mailto:sheikhm@who.int">sheikhm@who.int</a>
LABRIQUE, Doctor Alain Bernard	HQ/DHI Digital Health and Innovation	<a href="mailto:labriquea@who.int">labriquea@who.int</a>
REEDER, Doctor John Charles	HQ/RFH Research for Health	<a href="mailto:reederj@who.int">reederj@who.int</a>
REEDER, Doctor John Charles	HQ/TDR Special Programme for TDR	<a href="mailto:reederj@who.int">reederj@who.int</a>
RASANATHAN, Doctor Kumanan	HQ/HSR Alliance for Health Policy and Systems Research	<a href="mailto:rasanathank@who.int">rasanathank@who.int</a>



# UHC/Communicable and Noncommunicable Diseases

Dr Jérôme SALOMON ([salomonj@who.int](mailto:salomonj@who.int))

Full Name	Department	eMail
AKSELROD, Doctor Svetlana Valeryevna	HQ/GNP Global NCD Platform	<a href="mailto:akselrods@who.int">akselrods@who.int</a>
DOHERTY, Doctor Meg Caroline	HQ/HHS Global HIV, Hepatitis and STIs Programmes	<a href="mailto:dohertym@who.int">dohertym@who.int</a>
FALL, Doctor Ibrahima Socé	HQ/NTD Control of Neglected Tropical Diseases	<a href="mailto:socef@who.int">socef@who.int</a>
KASAEVA, Doctor Tereza	HQ/MTB Global Tuberculosis Programme	<a href="mailto:kasaevat@who.int">kasaevat@who.int</a>
KESTEL, Ms Devora Lillia	HQ/MSD Mental Health and Substance Use	<a href="mailto:kesteld@who.int">kesteld@who.int</a>
MIKKELSEN, Doctor Bente	HQ/NCD Noncommunicable Diseases	<a href="mailto:mikkelsenb@who.int">mikkelsenb@who.int</a>
NGAMIJE, Doctor Daniel	HQ/GMP Global Malaria Programme	<a href="mailto:ngamijed@who.int">ngamijed@who.int</a>



# UHC/Life Course

Dr Bruce AYLWARD ([aylwardb@who.int](mailto:aylwardb@who.int) )

Full Name	Department	eMail
ALLOTEY, Doctor Pascale	HQ/SRH Sexual and Reproductive Health and Research	<a href="mailto:allotey@who.int">allotey@who.int</a>
BANERJEE, Doctor Anshu	HQ/MCA Maternal, Newborn, Child & Adolescent Health & Ageing	<a href="mailto:banerjee@who.int">banerjee@who.int</a>
KHOSLA, Mr Rajat	HQ/NMC Partnership for Maternal Newborn and Child Health	<a href="mailto:khoslar@who.int">khoslar@who.int</a>
CAMPBELL, Mr James William	HQ/HWF Health Workforce	<a href="mailto:campbellj@who.int">campbellj@who.int</a>
DALIL, Doctor Suraya	HQ/PHC Special programme on Primary Health Care	<a href="mailto:dalilsu@who.int">dalilsu@who.int</a>
EDEJER, Doctor Tessa (a.i.)	HQ/HGF Health Systems Governance and Financing	<a href="mailto:tantorrest@who.int">tantorrest@who.int</a>
EGGERS, Doctor Rudi	HQ/IHS Integrated Health Services	<a href="mailto:eggersr@who.int">eggersr@who.int</a>
KURUVILLA, Doctor Shyama (a.i.)	HQ/TMC WHO Global Centre for Traditional Medicine	<a href="mailto:kuruvillas@who.int">kuruvillas@who.int</a>
NG, Ms Serina	HQ/FHT G20 Joint Finance Health Task Force Secretariat	<a href="mailto:ngse@who.int">ngse@who.int</a>
O'BRIEN, Doctor Katherine Louise	HQ/IVB Immunization, Vaccines and Biologicals	<a href="mailto:obrienk@who.int">obrienk@who.int</a>



# Health Emergencies

Dr Michael RYAN ([ryanm@who.int](mailto:ryanm@who.int)) – Deputy Director-General and Executive Director Health Emergencies

Dr Chikwe IHEKWEAZU ([cihekweazu@who.int](mailto:cihekweazu@who.int)) – Health Emergency Intelligence and Surveillance Systems

Full Name	Department	eMail
CHUNGONG, Doctor Stella	HQ/HSP Health Security Preparedness	<a href="mailto:chungongs@who.int">chungongs@who.int</a>
EMIROGLU, Doctor Nedret	HQ/CRS Country Readiness Strengthening	<a href="mailto:emiroglun@who.int">emiroglun@who.int</a>
MAHAMUD, Doctor Abdi Rahman	HQ/ARC Alert and Response Coordination	<a href="mailto:mahamuda@who.int">mahamuda@who.int</a>
MAHJOUR, Doctor Jaouad	HQ/HEO Office of WHE Executive Director	<a href="mailto:mahjourj@who.int">mahjourj@who.int</a>
MUSANI, Mr Altaf	HQ/HEI Health Emergency Interventions	<a href="mailto:musania@who.int">musania@who.int</a>
PENDERGAST, Mr Scott Douglas	HQ/SPP Strategic Planning and Partnership	<a href="mailto:pendergasts@who.int">pendergasts@who.int</a>
VAN KERKHOVE, Doctor Maria (a.i.)	HQ/EPP Epidemic & Pandemic Preparedness and Prevention	<a href="mailto:vankerkhovem@who.int">vankerkhovem@who.int</a>
YAO, Doctor N'da Konan Michel	HQ/SHO Strategic Health Operations	<a href="mailto:yaom@who.int">yaom@who.int</a>

Health Emergency Intelligence and Surveillance Systems		
HERSEY, Ms Sara	HQ/COL Collaborative Intelligence	<a href="mailto:herseys@who.int">herseys@who.int</a>
KRAUSE, Doctor Gérard	HQ/SRV Surveillance Systems	<a href="mailto:krauseg@who.int">krauseg@who.int</a>
MORGAN, Doctor Oliver William Colville	HQ/ISY Pandemic and Epidemic Intelligence Systems	<a href="mailto:omorgan@who.int">omorgan@who.int</a>

