

4 The Square, Beaminster, DT8 3AS

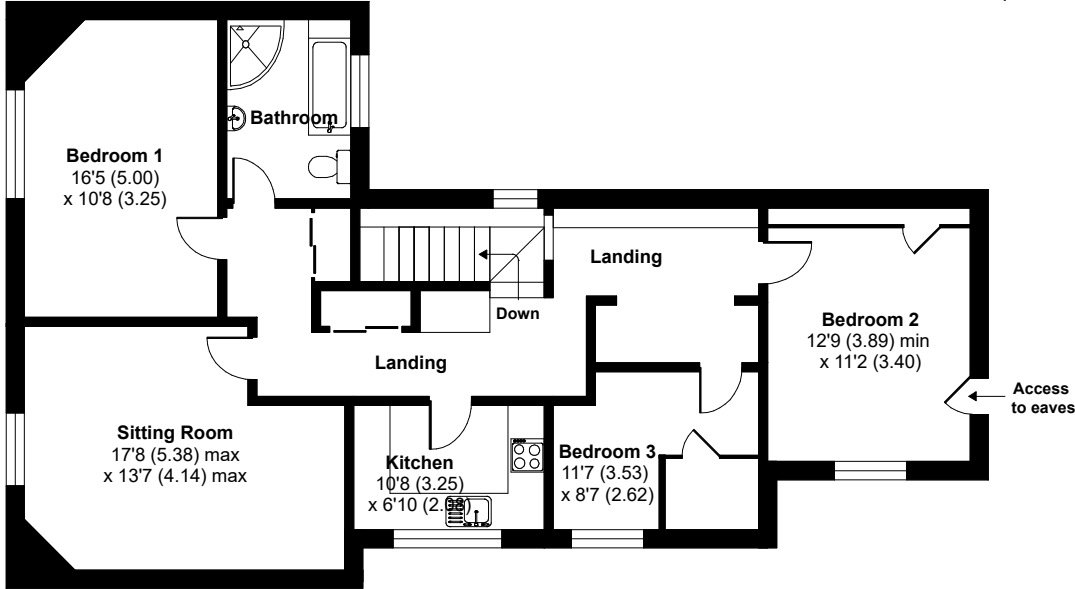
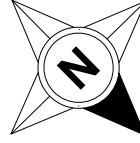
Ground Floor = 996 sq ft / 92.5 sq m

First Floor = 782 sq ft / 72.6 sq m

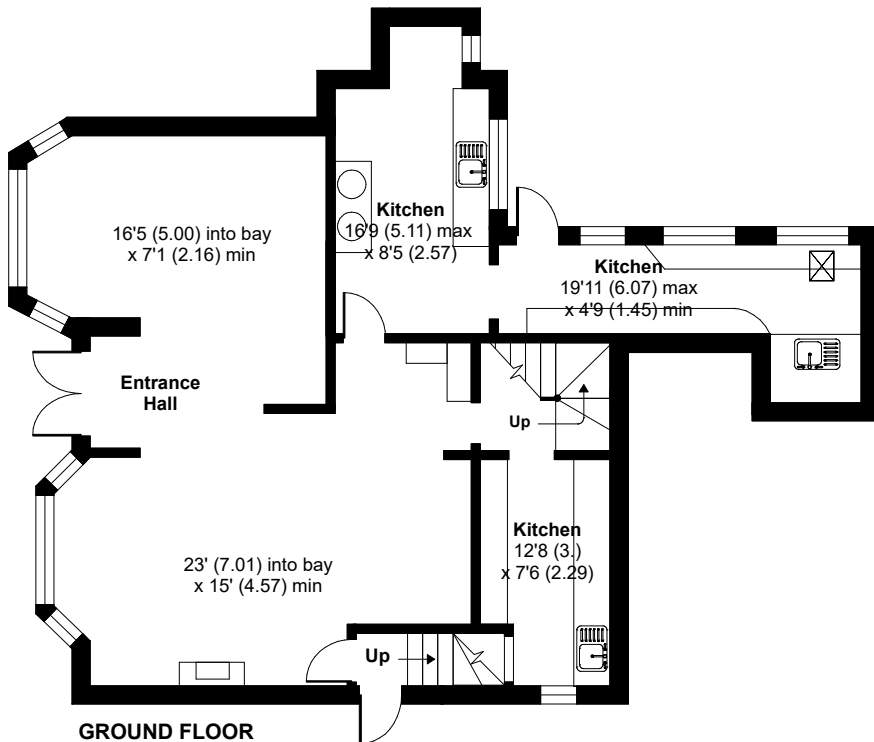
Second Floor = 1096 sq ft / 101.8 sq m

Total = 2874 sq ft / 266.9 sq m

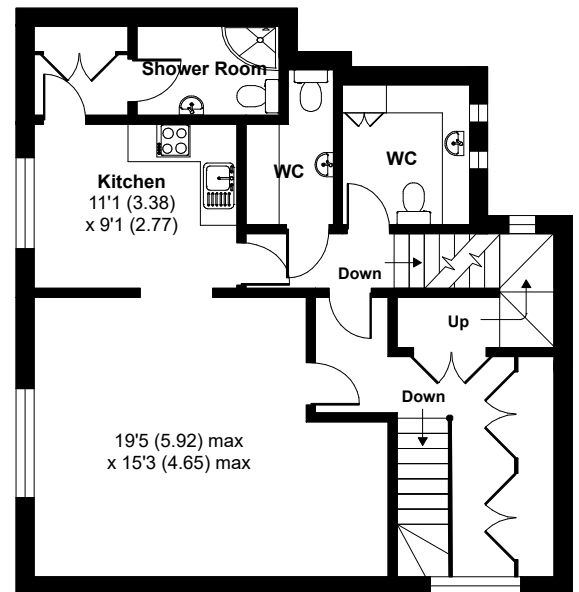
For identification only - Not to scale



SECOND FLOOR



GROUND FLOOR



FIRST FLOOR

