

Strength.  
Endurance.  
Beauty.



PPG CORAFLO<sup>®</sup> ADS Fluoropolymer and  
BRP (Build. Restore. Protect) Urethane Coatings  
Color Guide



We protect and beautify the world™



## Exceptional protection with brilliant color

Enhance, protect and revitalize the look of your building or structure with *Coraflon* ADS (Air-Dry System) fluoropolymer and BRP (Build. Restore. Protect.) urethane coatings.

*Coraflon* ADS coatings enhance and revitalize the appearance of your building or metal roof by giving you the color options you need to get the look you want. These coatings meet the AAMA 2605 weatherability and chemical resistance standards set by architectural PVDF finishes.

BRP urethane coatings restore exterior architectural metals and metal roofs in a rich palette of vivid solid colors and metallics.

### Coraflon ADS Coatings

#### Primers

PPG offers *Coraflon* ADS epoxy primers designed for uncoated non-ferrous and ferrous metals as well as KYNAR<sup>®</sup>-coated, factory-coated and field-coated substrates.

#### Fluoropolymer Coatings

PPG pioneered the architectural metal coating industry with proven products such as *Coraflon* ADS and DURANAR<sup>®</sup> fluoropolymer coatings. *Coraflon* ADS coating is a two-component fluoropolymer finish that provides excellent color and chalk resistance.

### BRP Coatings

#### Urethane Coatings

Build. Restore. Protect. These urethane topcoats and clearcoats are recommended for use on properly prepared and primed exterior metal and masonry surfaces where durability is a consideration. BRP urethanes have tremendous color capabilities and low VOCs. Topcoats are available in satin and gloss sheens as well as pearl and metallic finishes, while clearcoats are available in matte, satin and gloss.

## Coraflon ADS fluoropolymer coatings

Based on PPG's proven technologies, you can trust *Coraflon* ADS long-lasting, field-applied coatings. They are optimal for building restoration and large surface applications, and an excellent choice for restoring weathered building panels and accents. These coatings feature low VOCs and therefore can be used in most regions. Their characteristics make them an ideal choice for high-profile architectural applications where long-term aesthetics are desired.

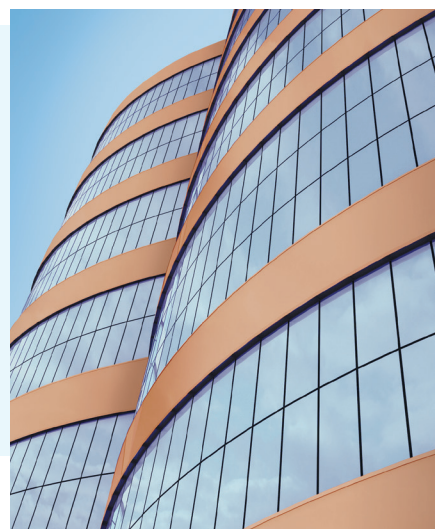
The chemically inert *Coraflon* ADS composition delivers a brilliant, low-maintenance finish that stands the test of time. Its unique formulation enables *Coraflon* ADS coatings to attain a rich palette of solid, mica and metallic finishes while providing exceptional performance in color and gloss retention.

### The PPG benefit

- Exceptional color and gloss retention
- Excellent resistance to chalking, weathering, marring, abrasion and ultra-violet light
- Extends life cycle, which may reduce maintenance costs
- Brush, roller and spray application
- VOC-compliant in most regions
- Easy application
- Available in a wide variety of colors

### Segments

- Building panels and window mullions
- Amusement park rides
- Stadiums
- Transit
- Metal roofs and signs
- Universities and churches



Performance Properties	Results
<b>Dry Film Thickness</b> (ASTM D1400)	Primer: consult PPG technical service / Topcoat: 1.5-2.2 mil
<b>Gloss @ 60°</b> (ASTM D523)	Standard gloss is 30 and 80
<b>Pencil Hardness</b> (ASTM D3363)	HB – H
<b>Flexibility, T-Bend</b> (ASTM D4145)	3 T-bend; no cracking or pick-off
<b>Adhesion</b> (ASTM D3359)	No adhesion loss
<b>Impact Resistance</b> (ASTM D2794)	No cracking or pick-off
<b>Abrasion, Falling Sand</b> (ASTM D968)	50 liters min.
<b>Detergent Resistance</b> (ASTM D2248 / ASTM D3359)	No adhesion loss
<b>Acid Resistance</b> (ASTM D1308) 10% sulfuric acid – 24 hours (AAMA 2605) 10% nitric acid spot – 15 minutes 10% muriatic acid spot – 15 minutes	No discoloration <5ΔE color change No discoloration
<b>Salt Spray Resistance</b> (ASTM B117) 1,000 hours – steel / 4,000 hours – aluminum	1/8" max. avg. scribe creep; none or few #8 field blisters
<b>Humidity Resistance</b> (ASTM D714, ASTM D2247) 1,500 hours – steel / 4,000 hours – aluminum	1/8" max. avg. scribe creep; none or few #8 field blisters
<b>Exterior Exposure</b> (ASTM D2244, ASTM D4214) 10 years @ 45°, South Florida / Erosion	Max. 5 fade, max. 8 chalk / <10% loss after exposure

## BRP urethane coatings

BRP urethane coatings are high-performance, two-component coatings used to restore exterior architectural metals and metal roofs. They provide excellent resistance to chemicals and weathering, good resistance to humidity and salts, and good protection against mar and abrasion. These cross-linked coatings will not discolor or chalk when exposed to ultraviolet light, and provide new life for tired building components at an exceptional value.

The extremely durable coatings offer long-lasting high-chroma color and gloss retention under a wide range of exterior exposures. Matte, satin and gloss sheens are offered along with metallics and special effects that are ideal for building renewal. The film surface is harder than other types of acrylic coatings, which facilitates the washing away of dirt relatively easily. Coatings are easy to apply and can be brushed, rolled or sprayed.

Additionally, a low-VOC urethane (<100 g/L VOC) is available that meets VOC regulations and South Coast Air Quality Management District (SCAQMD) standards nationwide.

Whether it's creating a colorful storefront or matching a vibrant color sample, count on PPG and the BRP urethane line of products to provide you with the high-chroma colors you need.

## Segments

Storefronts

Metal roofs

Retail imaging

Storage facilities

Colleges and hospitals

## The PPG benefit

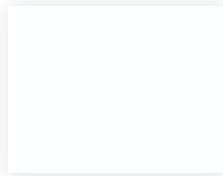
- Very good gloss and color retention
- Resists chemicals, impacts, marring and abrasions
- Dynamic, high-chroma color range
- Topcoats are available in satin and gloss sheens, while clearcoats are available in matte, satin and gloss
- Dirt resistant
- Lower price than *Coraflon ADS* coating
- Excellent adhesion
- Brush, roller and spray application
- Fast drying (three to five hours)



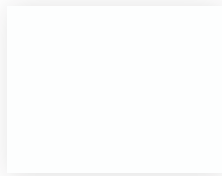
The color chips in this brochure cannot be considered totally accurate color matches, and are not to be used as approved standards. This document contains general information only and should not be construed as creating any warranties, express or implied. Please contact a PPG representative for additional information.

*Coraflon*, *Duranar*, the PPG Logo and PPG TrueFinish are registered trademarks and *We protect and beautify the world* is a trademark of PPG Industries Ohio, Inc. *Kynar* is a registered trademark of Arkema, Inc. *LEED* is a registered trademark of the U.S. Green Building Council. The *Twitter Logo* is a registered trademark of Twitter, Inc. The *IN Logo* is a registered trademark of LinkedIn Corporation. ©2019 PPG Industries, Inc. All rights reserved. 12/19 TF7000

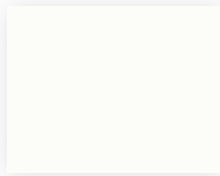
# SOLID COLORS



Traffic White  
AD3W1161N



White  
ADS252403N  
BLVS70586  
BRP22254



Bone White  
ADS225903N  
BLVS70343  
UC43350



Sandstone  
ADS244803N  
BLVS70344  
UC45392



Pebble Gray  
ADS250803N  
BLVS70676  
BRP22263



Aluminum Gray  
ADS230503N  
BLVS70409  
BRP22253



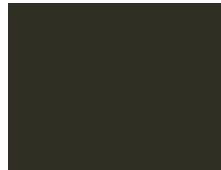
Sandalwood  
ADS290703N  
BLVS70610  
BRP22260



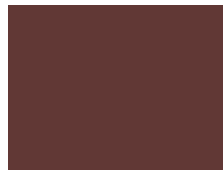
Light Bronze  
ADS299703N  
BLVS70508  
BRP22259



Sage Brown  
ADS825103N  
BLVS70674  
UC45082



Dark Bronze  
ADS817703N  
BLVS70697  
BRP22205



Burnt Crimson  
AD3F1213N



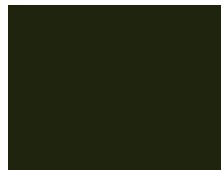
Brick Red  
ADS403803N  
BLVS70263  
BRP22248



Colonial Red  
AD3F1207N



Aurora Brown  
AD3F1214N



Statuary Brown  
ADS802203N  
BLVS70510  
UC43347



Center Stage  
AD3D1344N



Moonbeam Yellow  
AD3C1071N



All Star NJ  
AD3C1065N



Yellow  
AD3C1066N



Colonial Gray  
ADS221603N  
BLVS70561  
BRP22261



Aged Copper  
ADS519503N  
UC54434



Green  
AD3D1355N



Dark Green  
ADS542103N  
BLVS70307  
BRP22245



Hazel Woods  
ADS546803N  
BLVS70268  
BRP22251



Charcoal Gray  
ADS222103N  
BLVS70495  
BRP22258



Clear Sky  
AD3E1181N  
UC120403XL



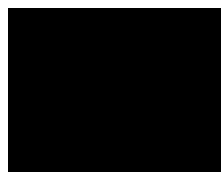
Dynamic Blue  
AD3E1292N



Gloss Blue  
ADS3E1290N

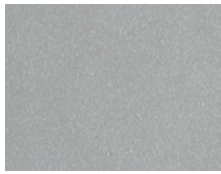


Electric Blue  
AD3E1294N



Black  
ADS230103N  
BLVS70345  
UC51046

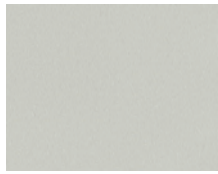
# MICA COLORS



Sterling Silver  
ADS176303N  
BLVS71629  
UC51131XL



Platinum Mica  
AD3Y1390N  
UC106682F



Anodized Aluminum  
ADS983303N  
BLVS74462  
BRP22280



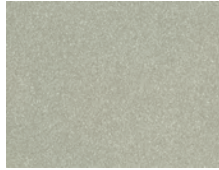
Washington White  
AD3Y2039N  
UC70129BC



Earthen Gold  
ADS194803N  
BLVS70767  
BRP22256



Arcadia Silver  
ADS915003N  
BLVS74467  
UC70123F



Silver  
ADS950103N  
BLVS69398  
UC117009F



Suede Mica  
AD3Y1496N  
UC106666F



Champagne  
ADS184603N  
BLVS70800  
BRP22264



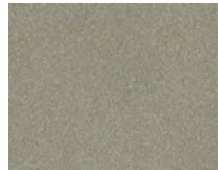
Gold Watch  
ADS180903N  
BLVS70810  
UC99388F



Champagne Gold  
ADS937903N  
BLVS74460  
BRP22278



Titanium  
ADS172103N  
BLVS74459  
BRP22277



Autumn Wood Metallic  
AD3Y1611N  
UC10671LB



Harvest Gold Pearl  
AD3Y3N  
UC106690F



Medium Bronze  
ADS965103N  
BLVS69048  
BRP22266



Silversmith  
ADS946003N  
BLVS68756  
UC70092F



Silver  
ADS171503N  
UC106684F



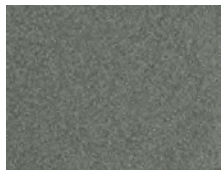
Silver Gray  
ADS950903N  
BLVS73619  
BRP22269



English Pewter  
ADS957203N  
BLVS74463  
UC51713XL



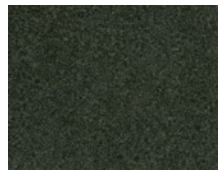
Pewter  
ADS964703N  
BLVS70490  
UC106766F



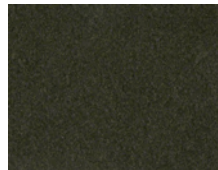
Gray Velvet  
ADS936603N  
BRP22475  
UC70214F



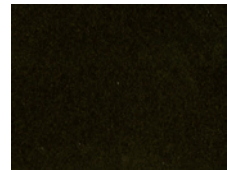
Medium Gray  
ADS990703N  
BLVS73620  
UC102662F



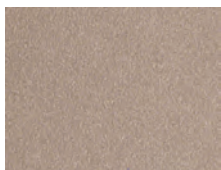
Cosmic Gray  
ADS194603N  
BLVS71035  
UC106685



Vintage Bronze  
ADS180803N  
BLVS69049  
UC120641F



Dark Briar Mica  
AD3Y2126N  
UC106694F



Rose Pearl  
AD3Y2027N



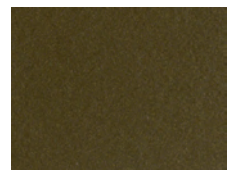
Copper Penny  
AD3Y1336N  
UC116193F



Aqua  
AD3Y1625N



Blue Mica  
AD3Y2237N  
UC132329



Lexus Bronze  
AD3Y1296N  
BLVS97601  
UC106698F

## BRP COLORS



Rose Magenta  
MP25248



Bubblegum  
MP29315



Palermo Purple  
MP70552



Very Violet  
MP25502



Deep Purple  
MP25550



Bayou Blue  
MP25771



Quay Blue  
MP25866



Electrical Blue  
MP24100



Lite Blue  
MP25465



Blue  
MP70549



Granny Smith  
MP28434



Sea Green  
MP58098



Tropic Turquoise  
MP29439



Green  
MP70116



Forest Green  
MP55690



Citrus Yellow  
MP10211



Sundance Yellow  
MP10210



Yellow Corn  
MP28240



School Bus Yellow  
MP55149



Moline Orange  
MP70551



Roasted Red Pepper  
MP69079



Rally Red  
MP24846



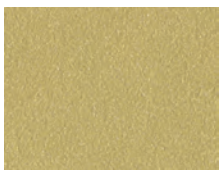
Crimson Red  
MP23966



Airway Orange  
MP72268



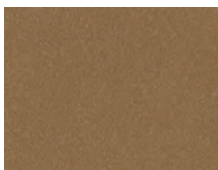
Orange Dust  
MP59024



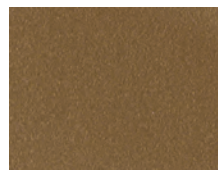
Brilliant Gold  
MP30133



Tucson Gold  
MP21606



Aztec Gold  
MP30134



Cinnagold Dust  
MP74752

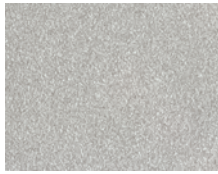


Copper  
MP24161

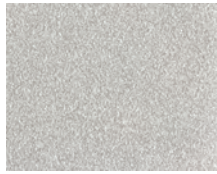
## METALLIC COLORS



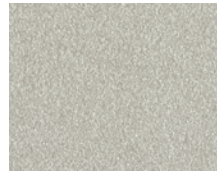
Bright Silver  
AD3Z1149XN  
UC127298



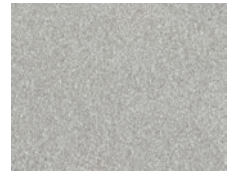
Silver Metallic  
AD3Z1161XN



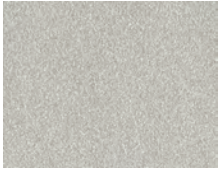
Bright Silver  
AD3Z1071XN  
UC57638XL



Bright Silver  
AD3Z1136XN



Silver  
AD3Z1112XN  
UC82989XL



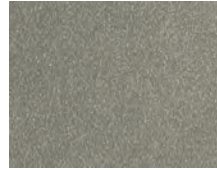
Sunrise Silver  
AD3Z1159XN



Sterling Gray  
AD3Z1154XN



Champagne  
AD3Z1077XN



Silver Metallic  
AD3Z1126XN



Star Spangled  
AD3Z1119XN



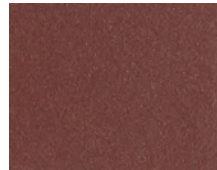
Gold Watch  
AD3Z1066XN



Southwest Gold  
AD3Z1173XN  
UC110762XL



Bronze Metallic  
AD3Z1110XN

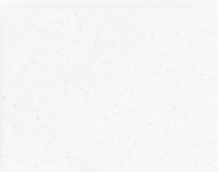


Metallic Red  
AD3Z1187XN



Dark Briar  
AD3Z1064XN  
BLVS76666

## SPECIALTY COLORS



Traffic White  
with Mica Clear Coat  
AD3W1161MN



Black  
with Mica Clear Coat  
ADS230103MN



BRP Matte (Clear)  
Fire Engine Red  
MP18644



BRP Satin (Clear)  
Fire Engine Red  
MP18644



BRP Gloss (Clear)  
Fire Engine Red  
MP18644

## LEGEND

AD *Corafon ADS Fluoropolymer Coating*  
BLVS *BRP Low-VOC Urethane Coating*  
BRP or MP *BRP Urethane Coating*  
UC *Duranar Fluoropolymer Coating*

## GLOSS LEVELS



*Corafon ADS Satin  
Red*  
AD3F1087N



*Corafon ADS Gloss  
Red*  
AD8F1087N