

Supplement of Atmos. Chem. Phys., 20, 11119–11141, 2020  
<https://doi.org/10.5194/acp-20-11119-2020-supplement>  
© Author(s) 2020. This work is distributed under  
the Creative Commons Attribution 4.0 License.



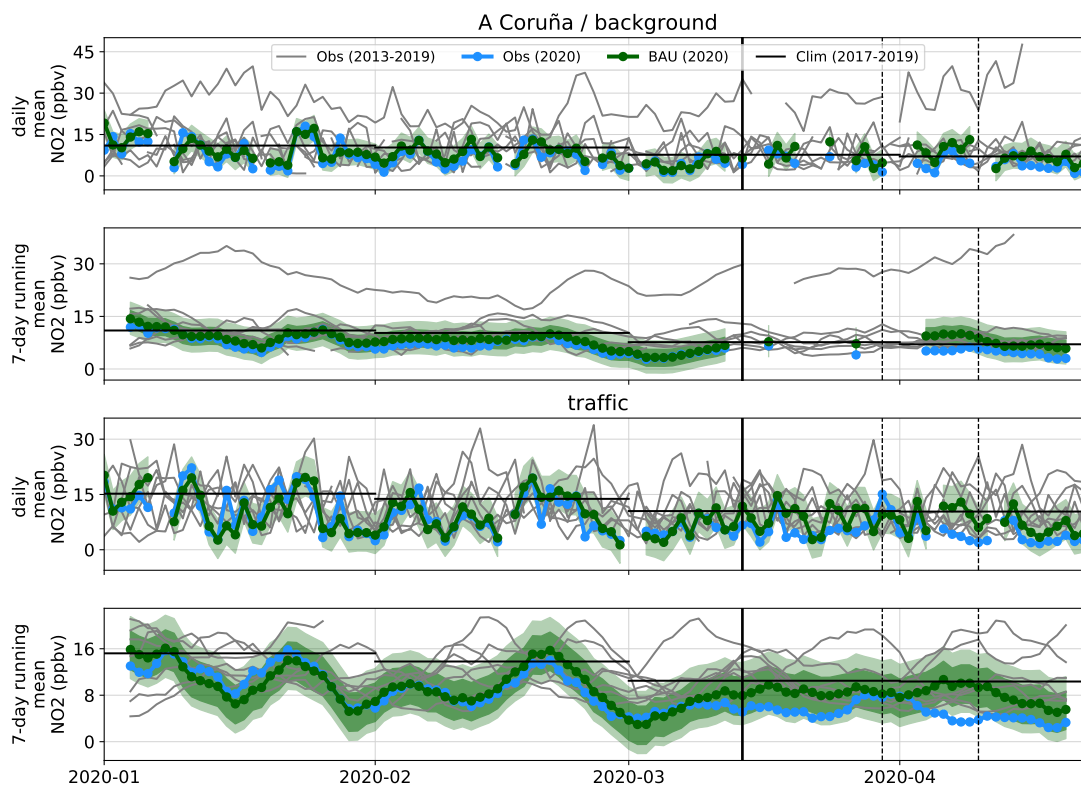
*Supplement of*

## **Meteorology-normalized impact of the COVID-19 lockdown upon NO<sub>2</sub> pollution in Spain**

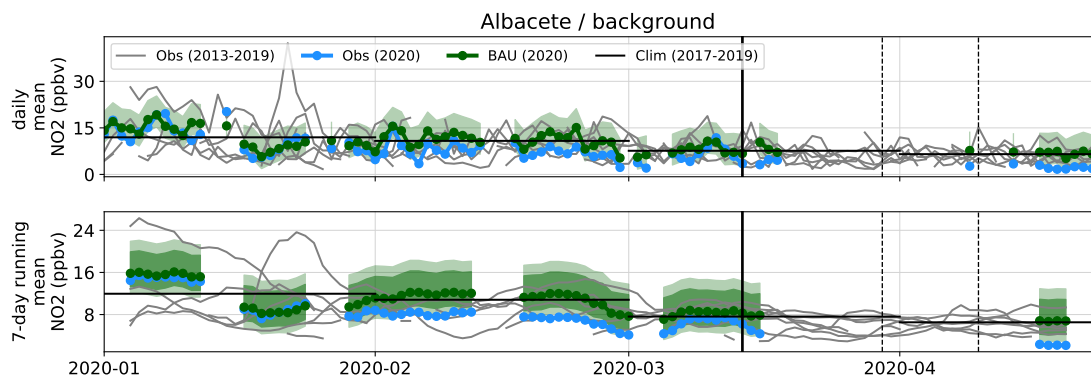
**Hervé Petetin et al.**

*Correspondence to:* Hervé Petetin ([herve.petetin@bsc.es](mailto:herve.petetin@bsc.es))

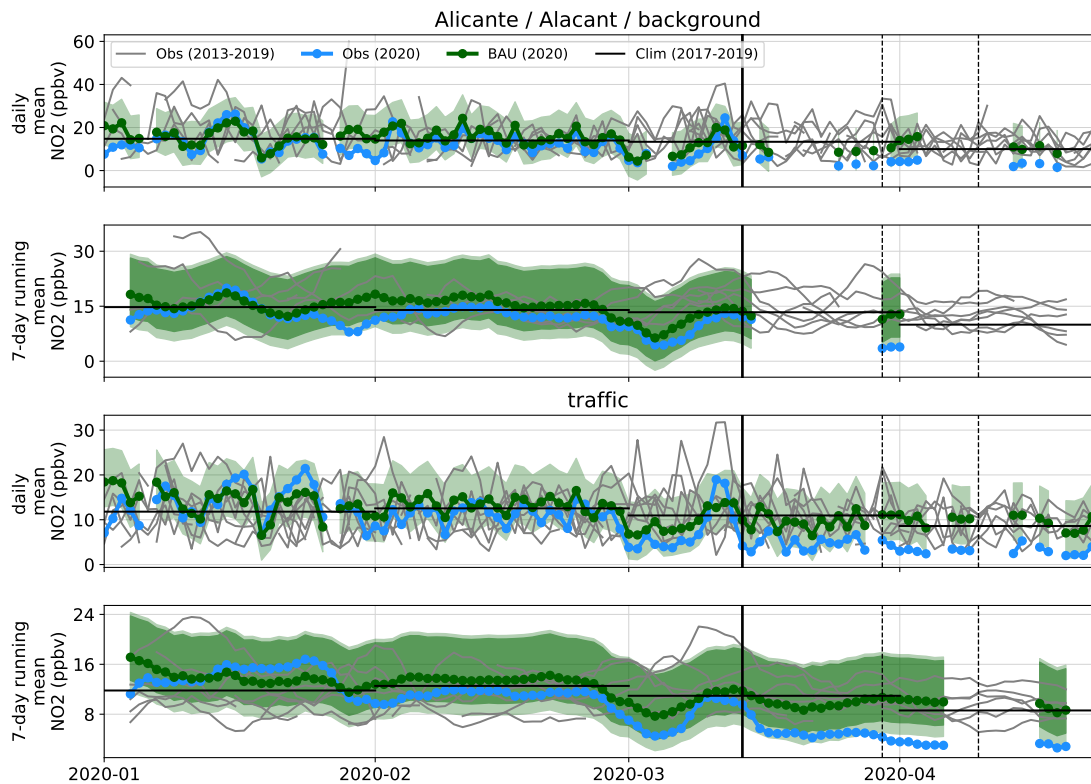
The copyright of individual parts of the supplement might differ from the CC BY 4.0 License.



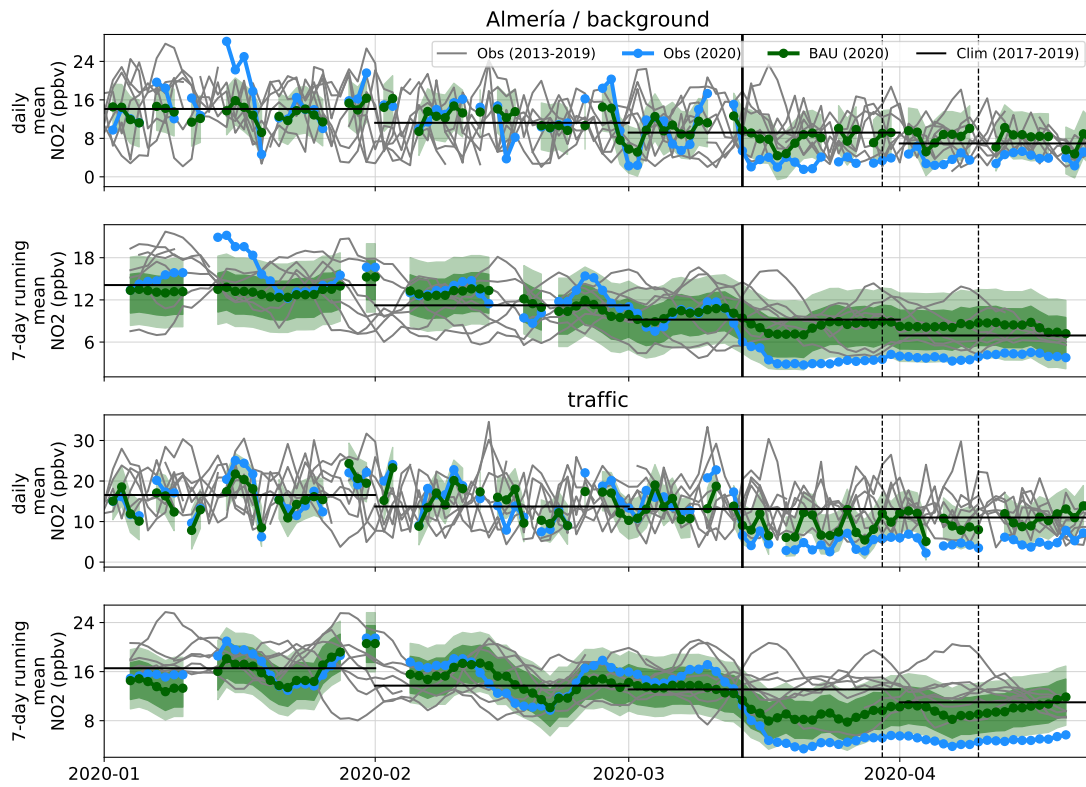
**Figure S1.** NO<sub>2</sub> mixing ratios in A Coruña province. The two top panels show the daily mean and 7-day running mean at the urban background station, respectively. The two bottom panels show the time series at the traffic station. Each panel displays the NO<sub>2</sub> mixing ratios observed in 2020 (in blue) and during the past years (2013-2019, in grey), and predicted in 2020 by the ML model (business-as-usual (BAU), in green). The uncertainties of the ML predictions are given at a 90% confidence level at the daily (light green) and weekly scales (medium green). The climatological monthly averages computed over the period 2017-2019 are also shown (in black). The vertical black line identifies the beginning of the lockdown, the next dotted lines separate the different lockdown phases (phase I : 2020/03/14-2020/03/29, phase II : 2020/03/30-2020/04/09, phase III : 2020/04/10-2020/04/23).



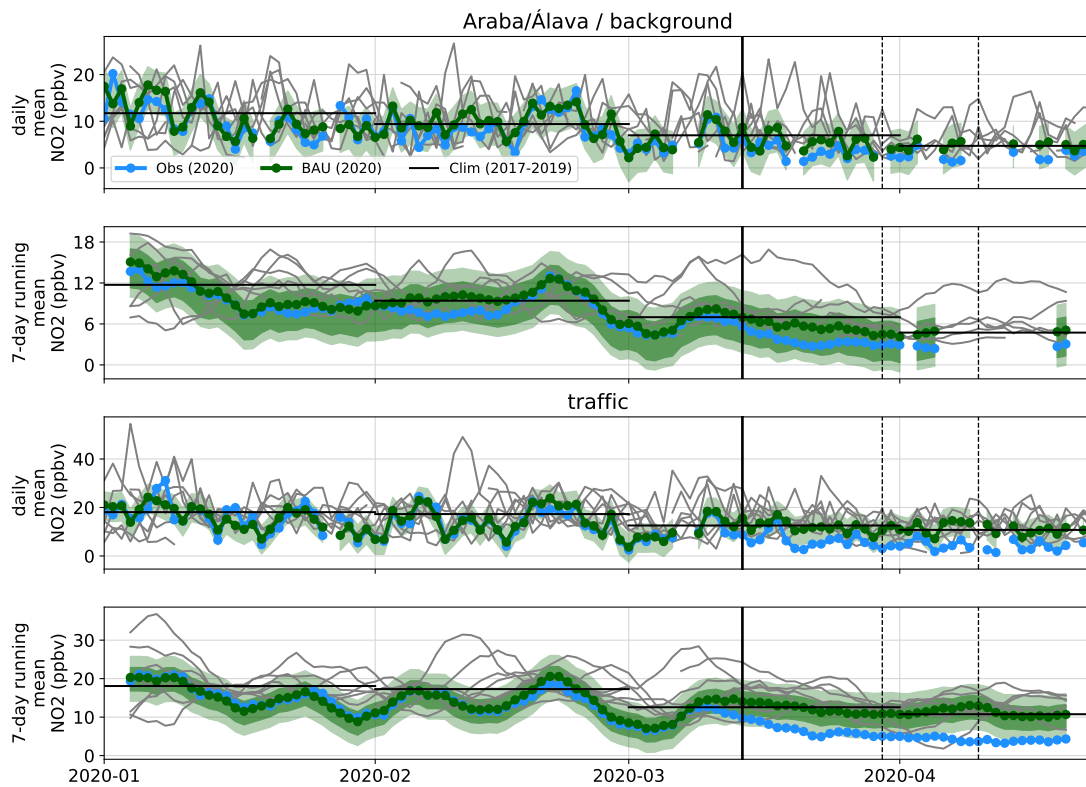
**Figure S2.** Similar to Fig. S1 for Albacete province.



**Figure S3.** Similar to Fig. S1 for Alicante/Alacant province.



**Figure S4.** Similar to Fig. S1 for Almería province.



**Figure S5.** Similar to Fig. S1 for Araba/Álava province.

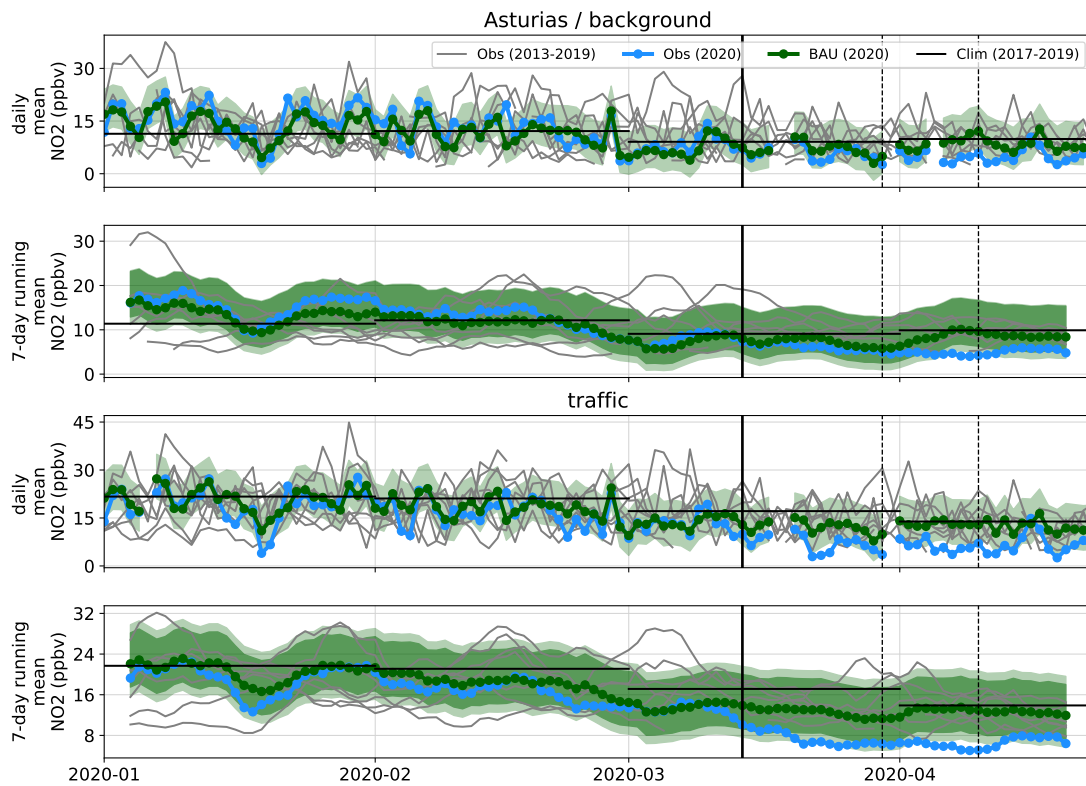


Figure S6. Similar to Fig. S1 for Asturias province.

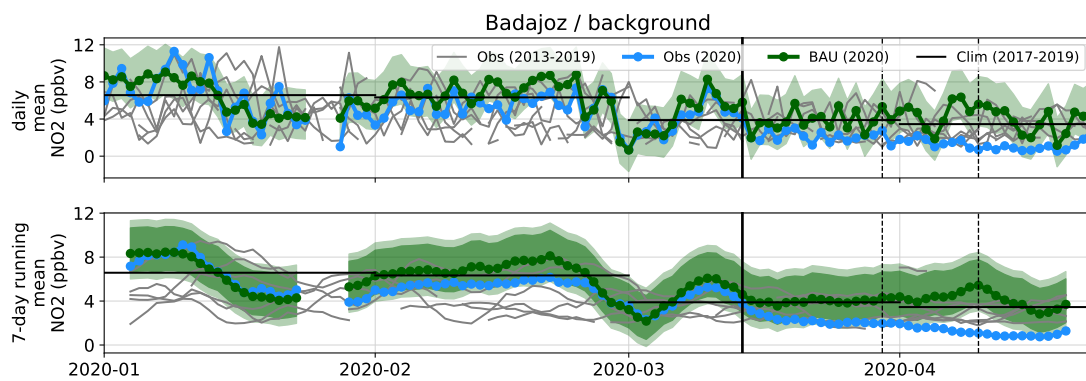
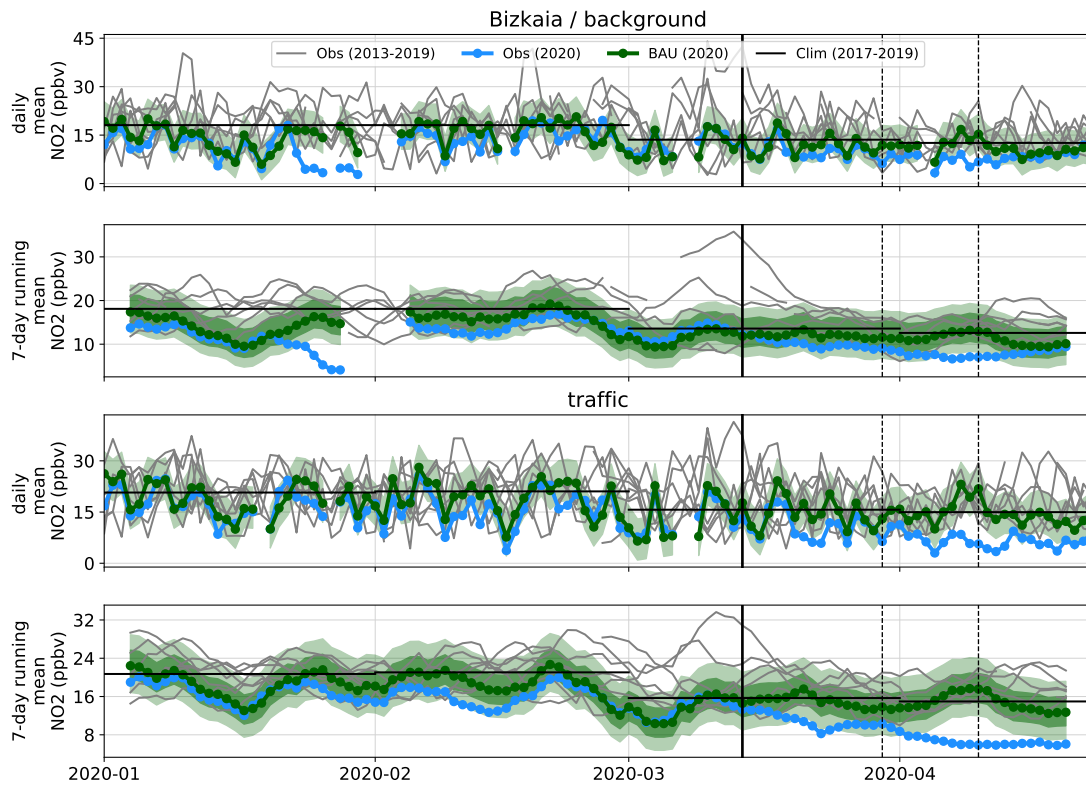
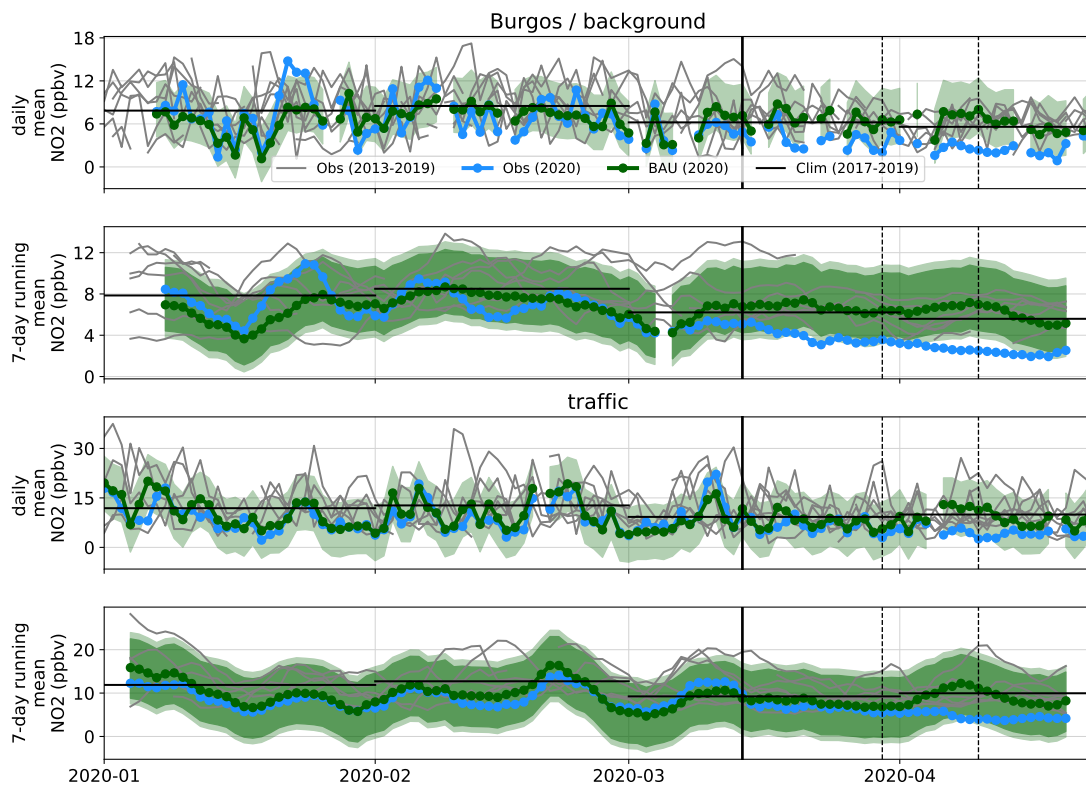


Figure S7. Similar to Fig. S1 for Badajoz province.

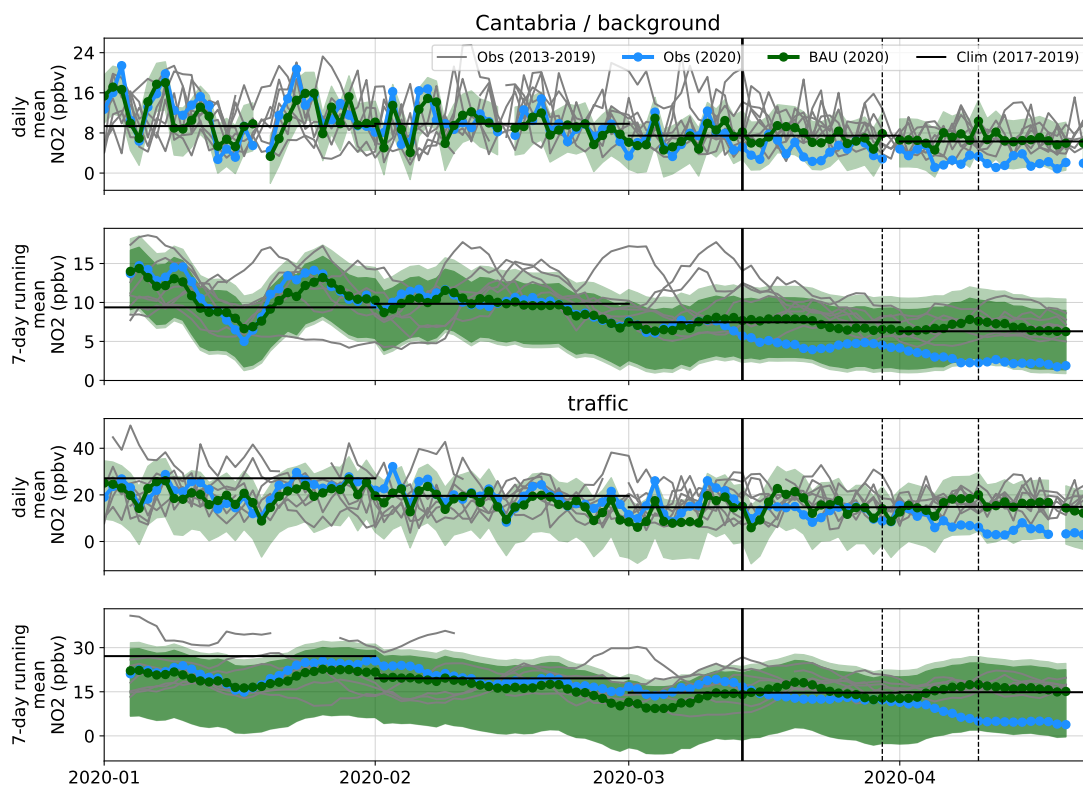


**Figure S8.** Similar to Fig. S1 for Bizkaia province.

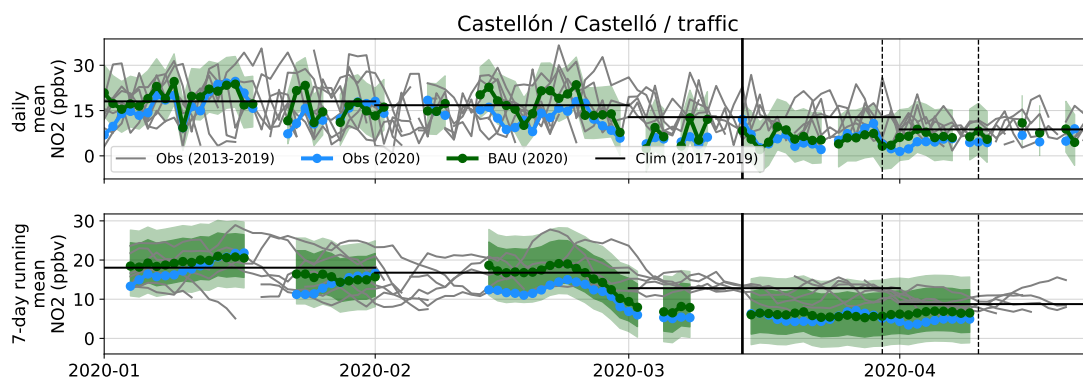


**Figure S9.** Similar to Fig. S1 for Burgos province.

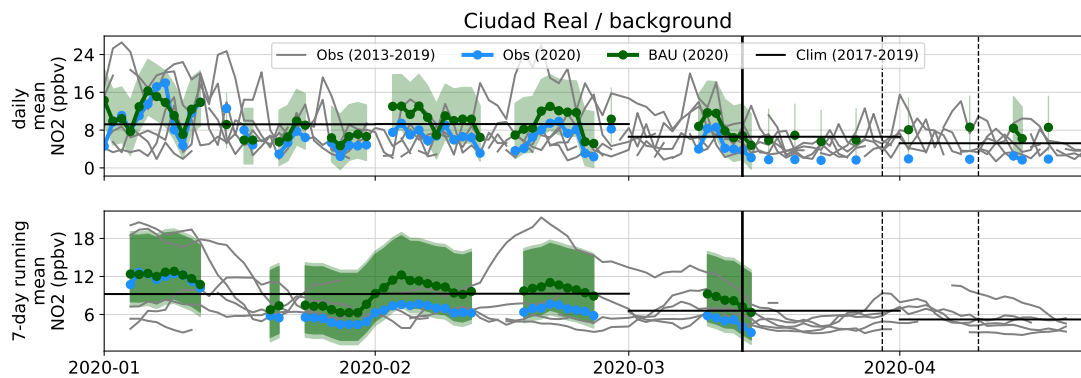




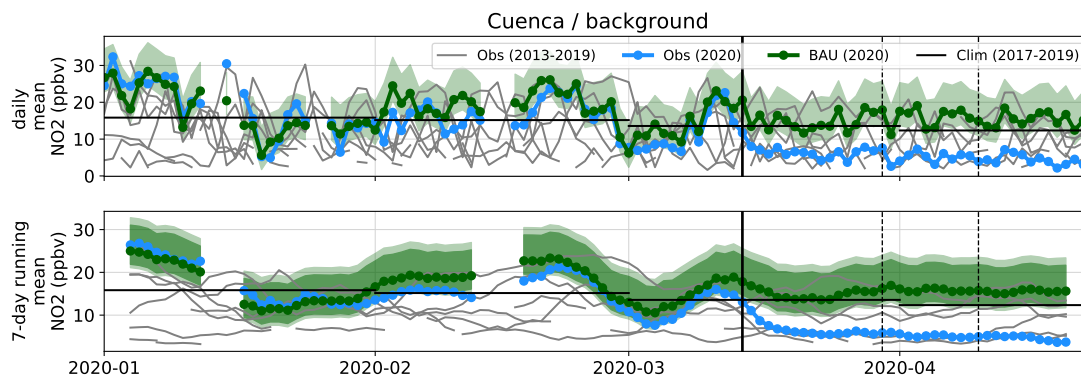
**Figure S10.** Similar to Fig. S1 for Cantabria province.



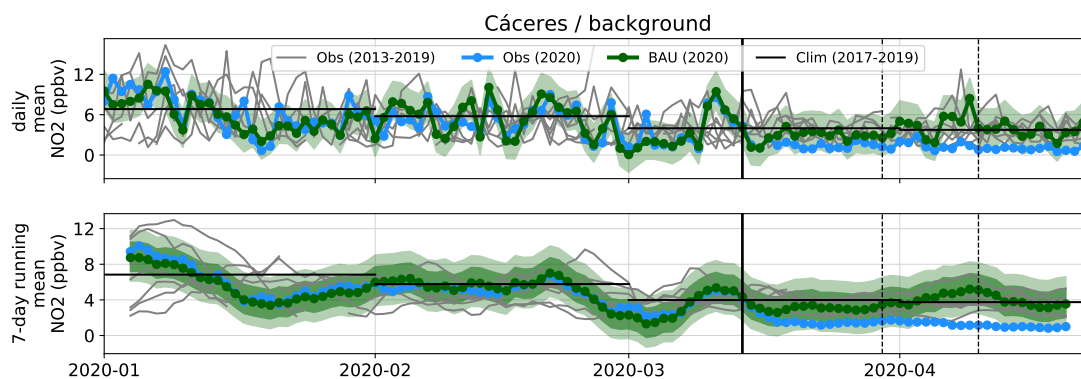
**Figure S11.** Similar to Fig. S1 for Castellón/Castelló province.



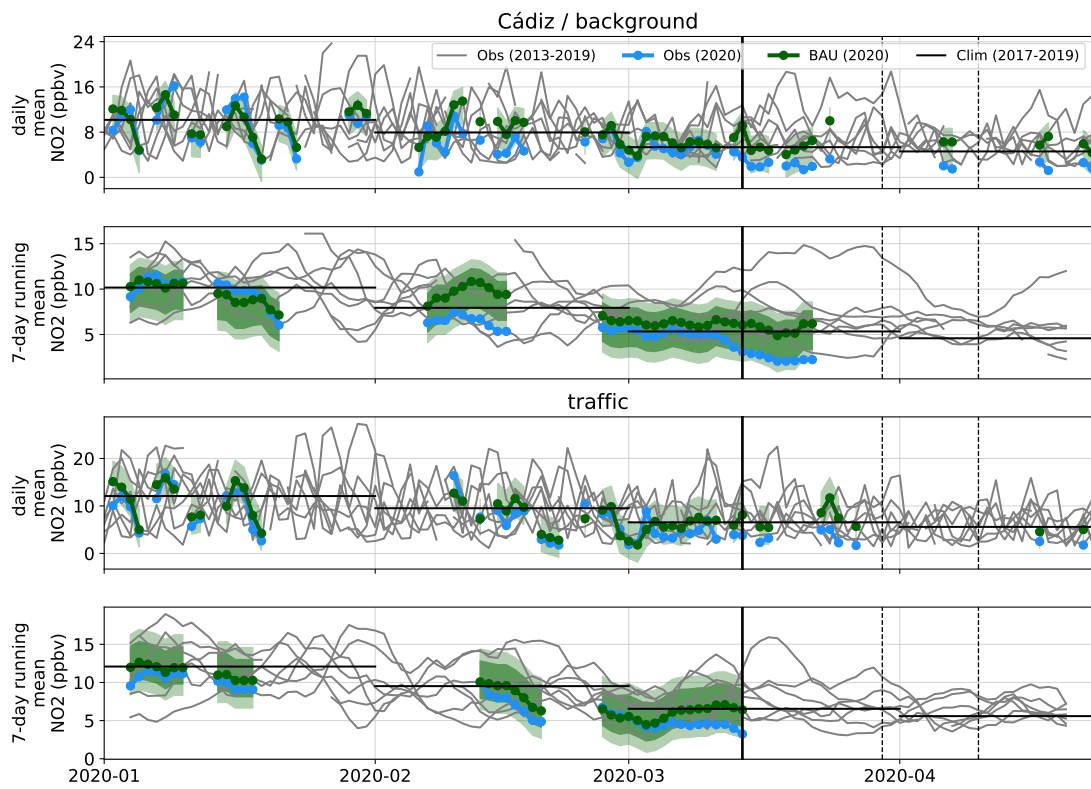
**Figure S12.** Similar to Fig. S1 for Ciudad Real province.



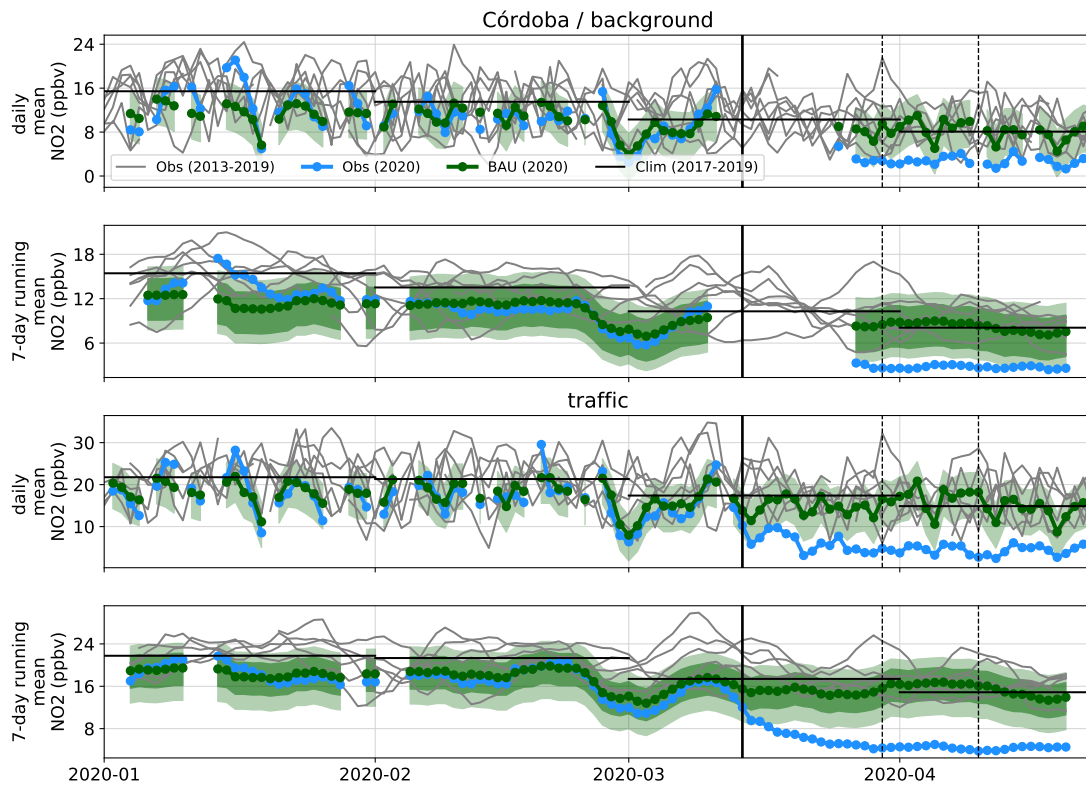
**Figure S13.** Similar to Fig. S1 for Cuenca province.



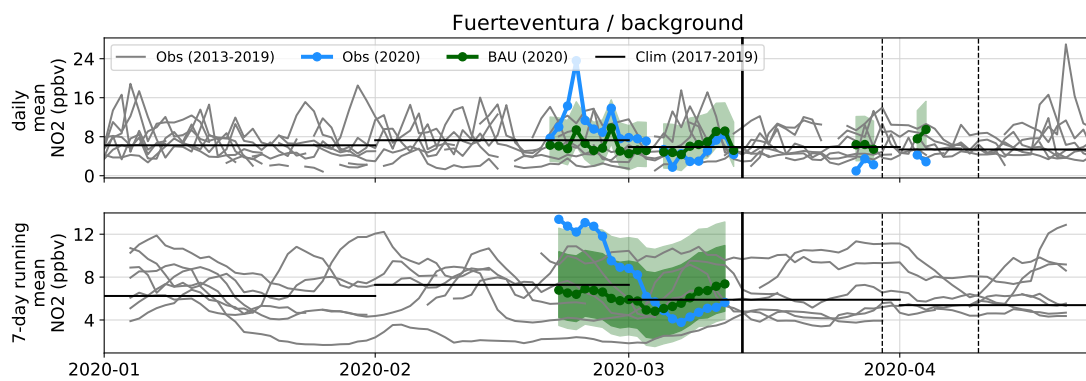
**Figure S14.** Similar to Fig. S1 for Cáceres province.



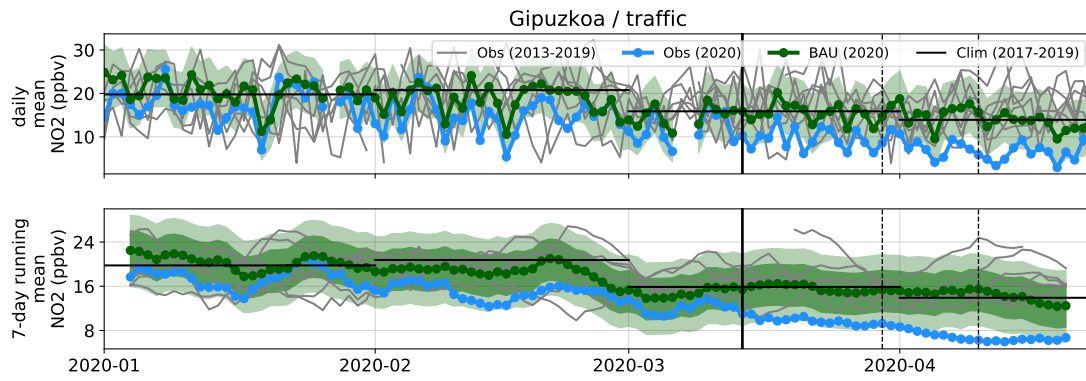
**Figure S15.** Similar to Fig. S1 for Cádiz province.



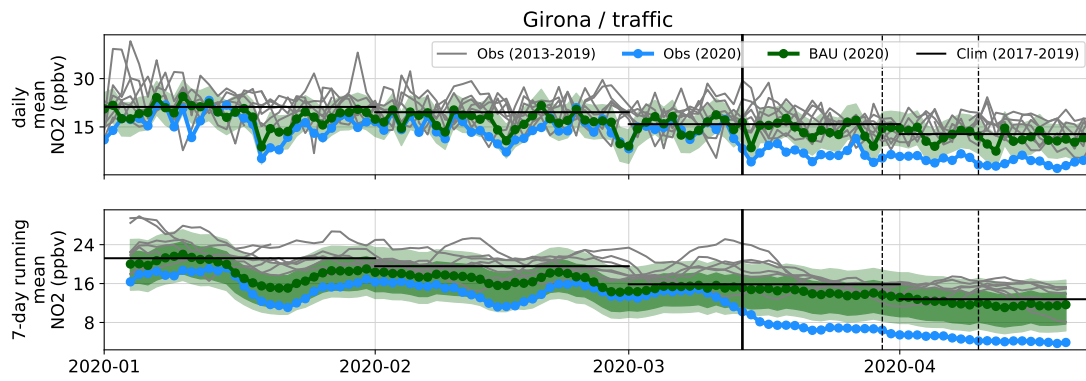
**Figure S16.** Similar to Fig. S1 for Córdoba province.



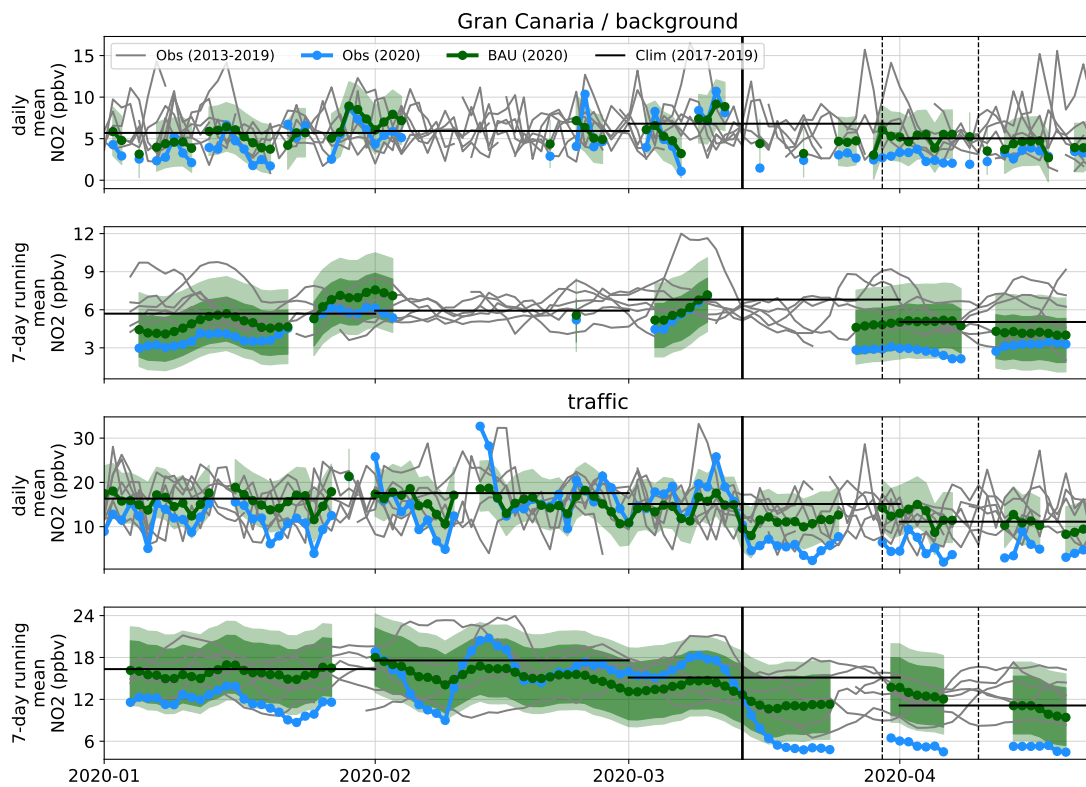
**Figure S17.** Similar to Fig. S1 for Fuerteventura province.



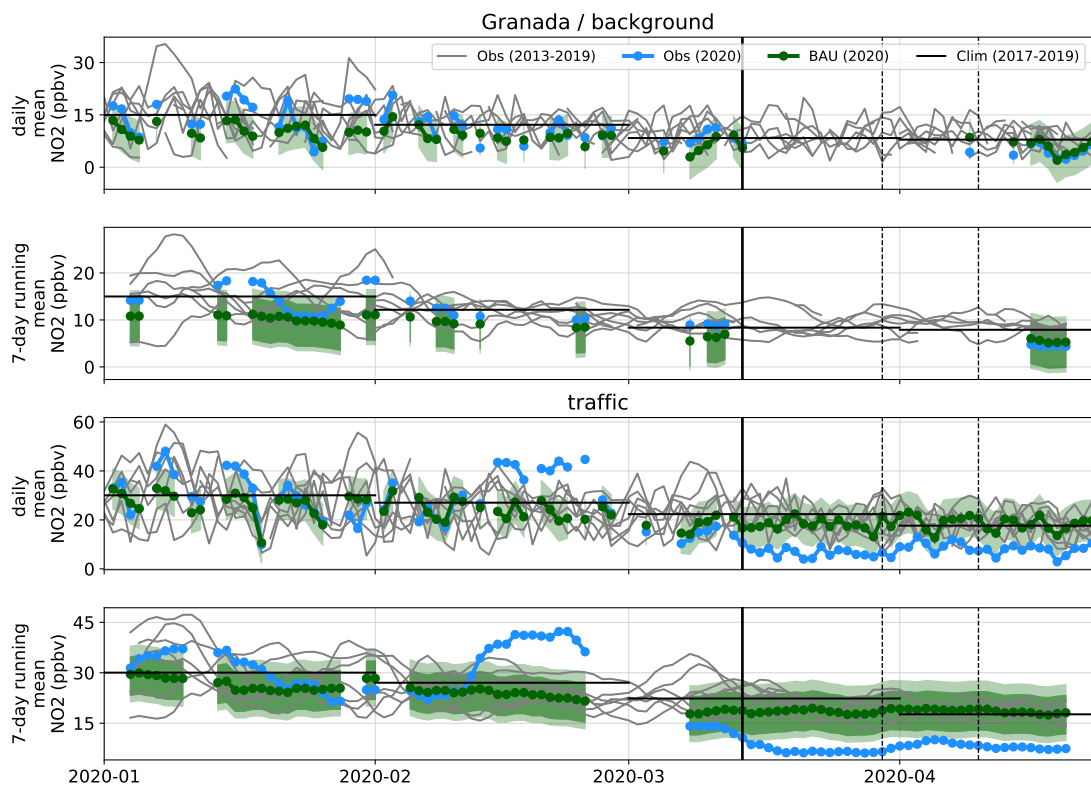
**Figure S18.** Similar to Fig. S1 for Gipuzkoa province.



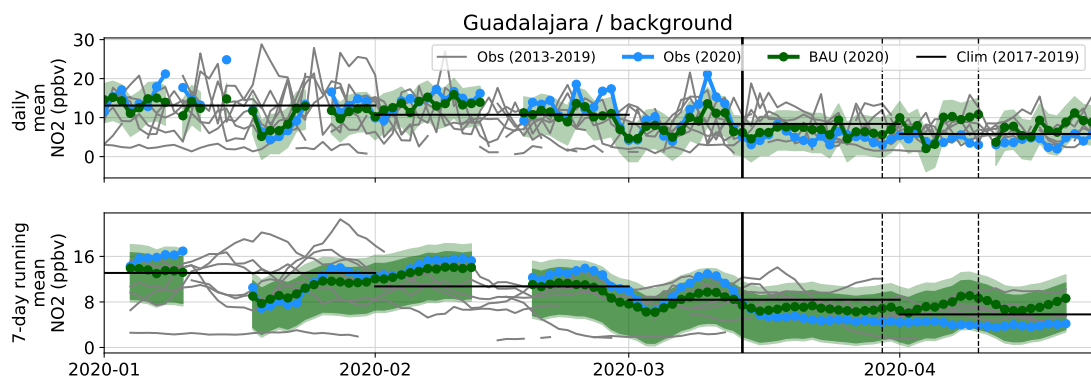
**Figure S19.** Similar to Fig. S1 for Girona province.



**Figure S20.** Similar to Fig. S1 for Gran Canaria province.



**Figure S21.** Similar to Fig. S1 for Granada province.



**Figure S22.** Similar to Fig. S1 for Guadalajara province.

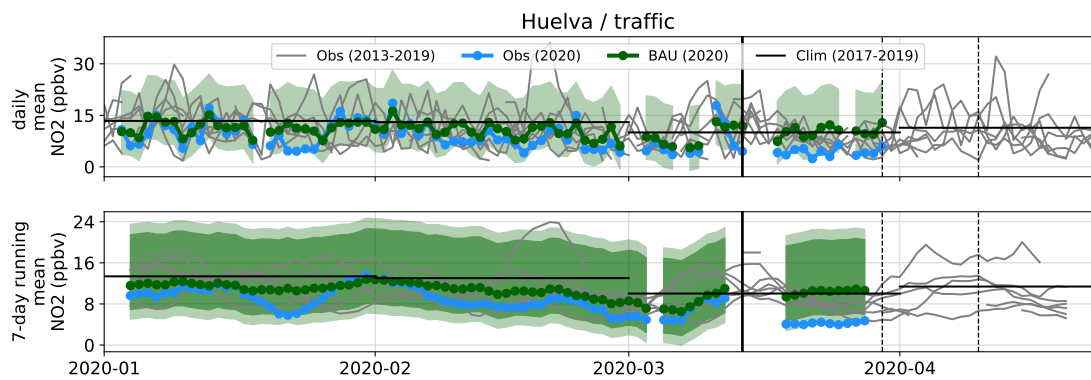


Figure S23. Similar to Fig. S1 for Huelva province.

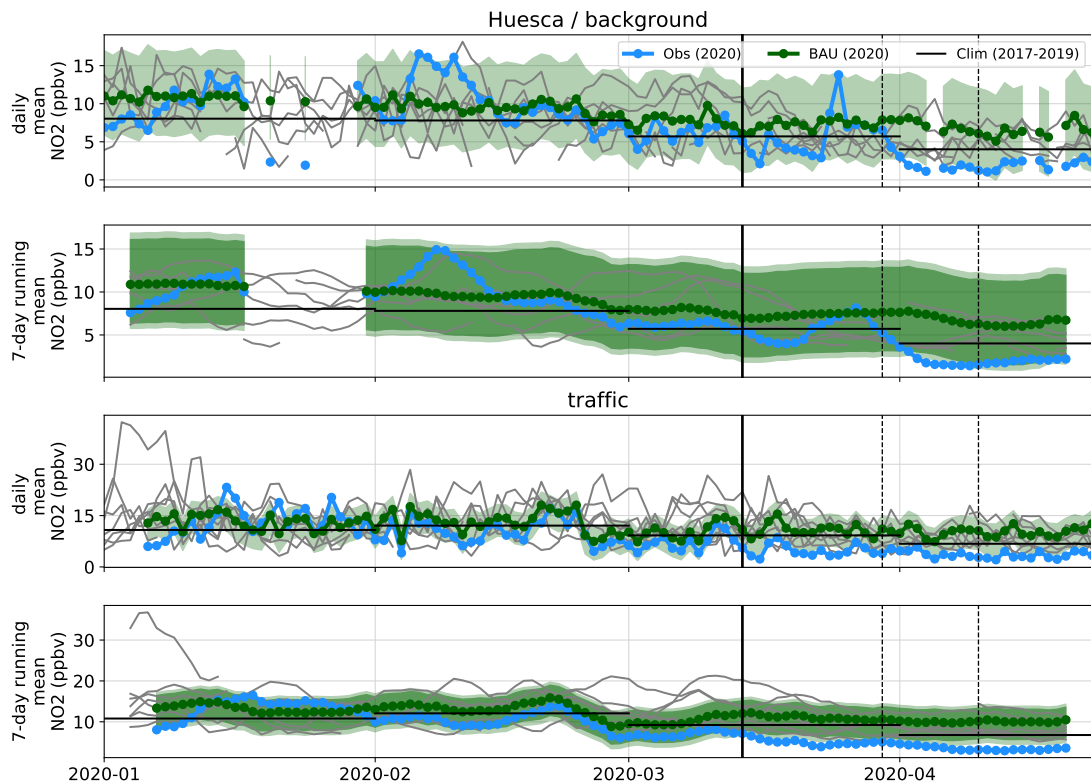
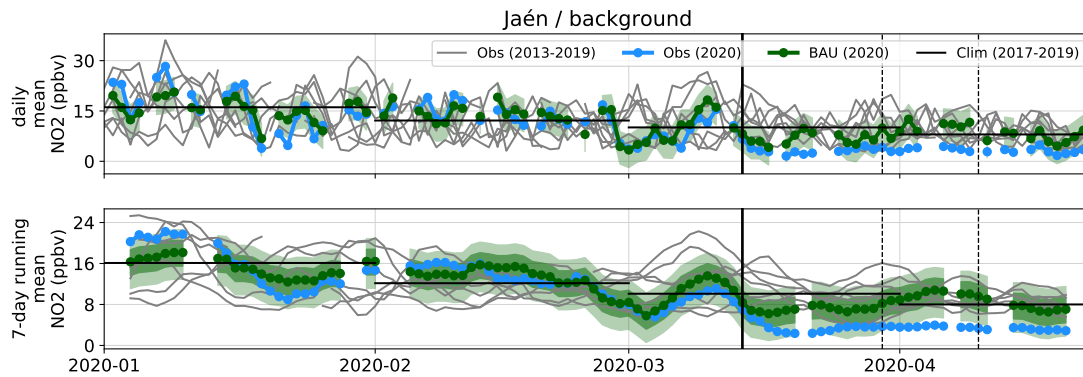
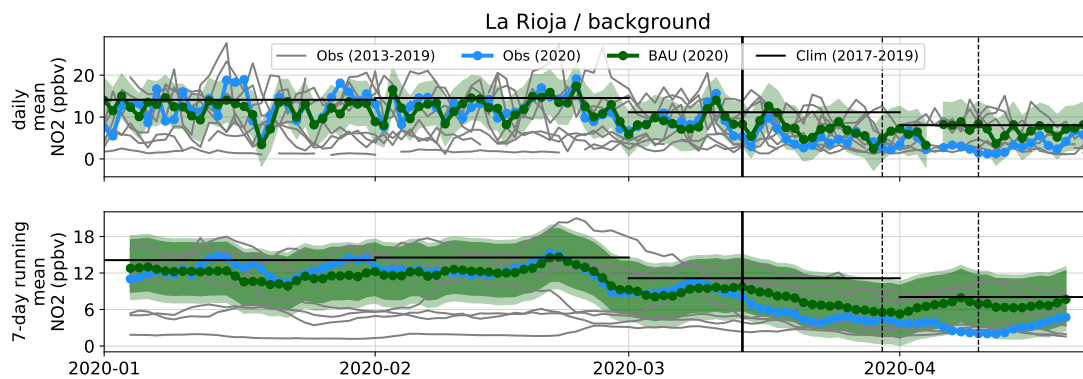


Figure S24. Similar to Fig. S1 for Huesca province.

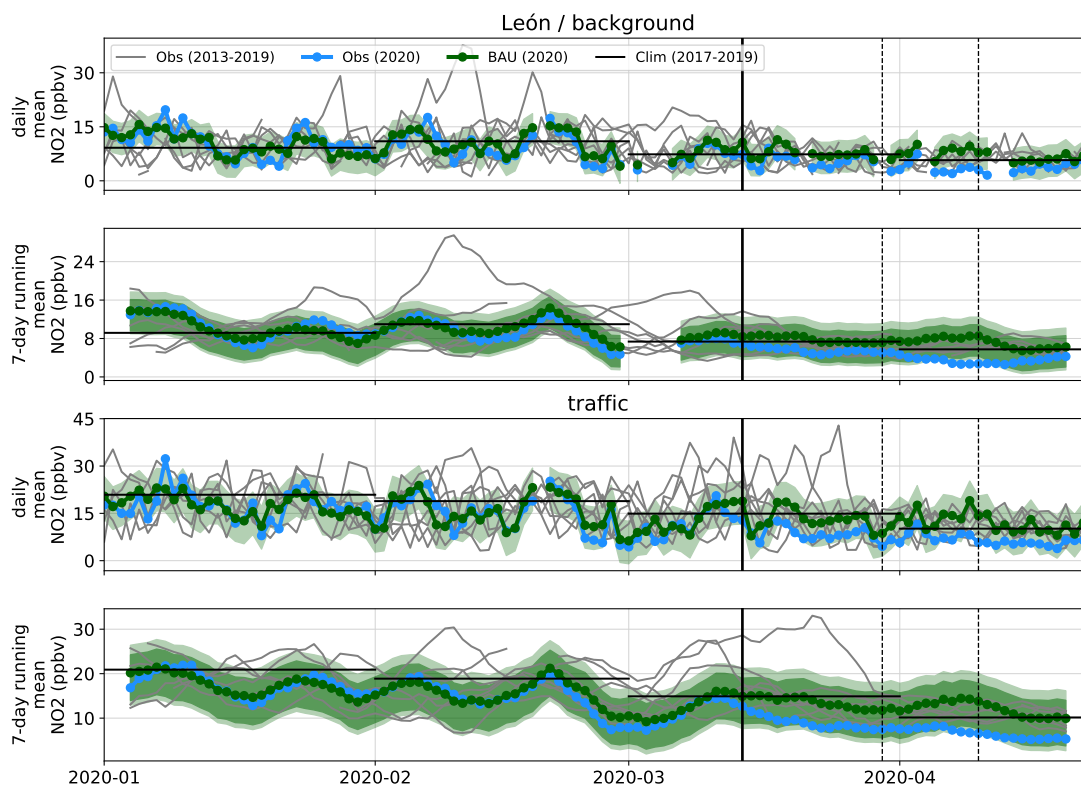




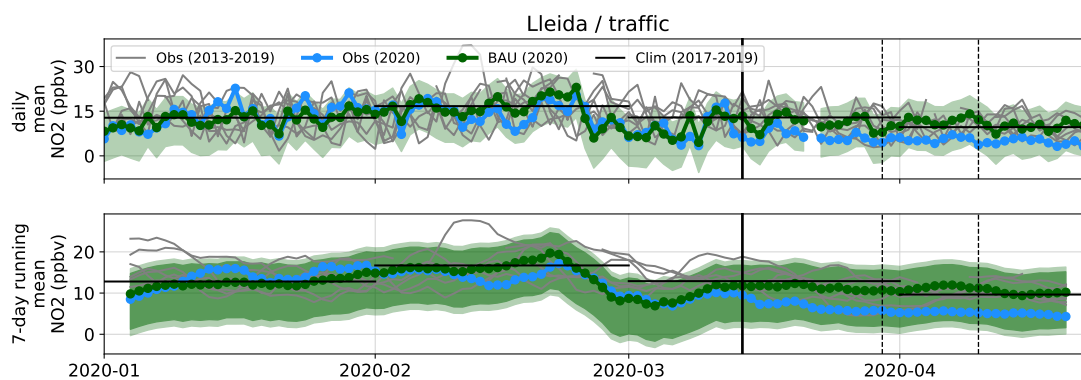
**Figure S25.** Similar to Fig. S1 for Jaén province.



**Figure S26.** Similar to Fig. S1 for La Rioja province.



**Figure S27.** Similar to Fig. S1 for León province.



**Figure S28.** Similar to Fig. S1 for Lleida province.

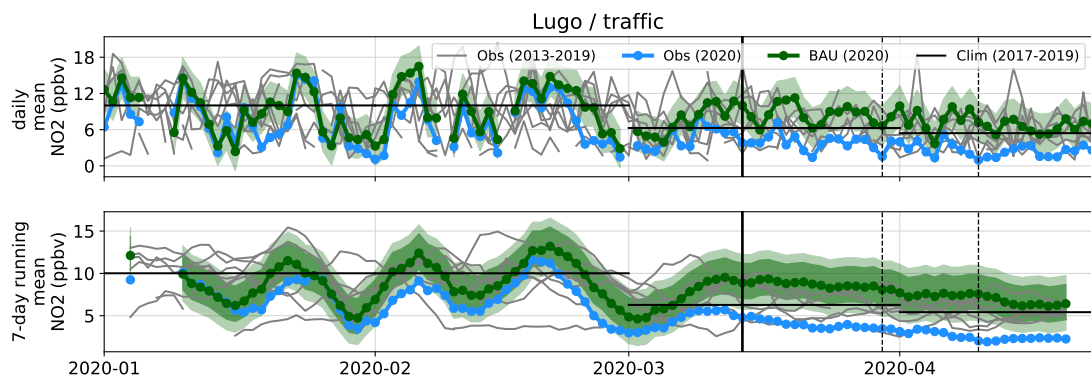


Figure S29. Similar to Fig. S1 for Lugo province.

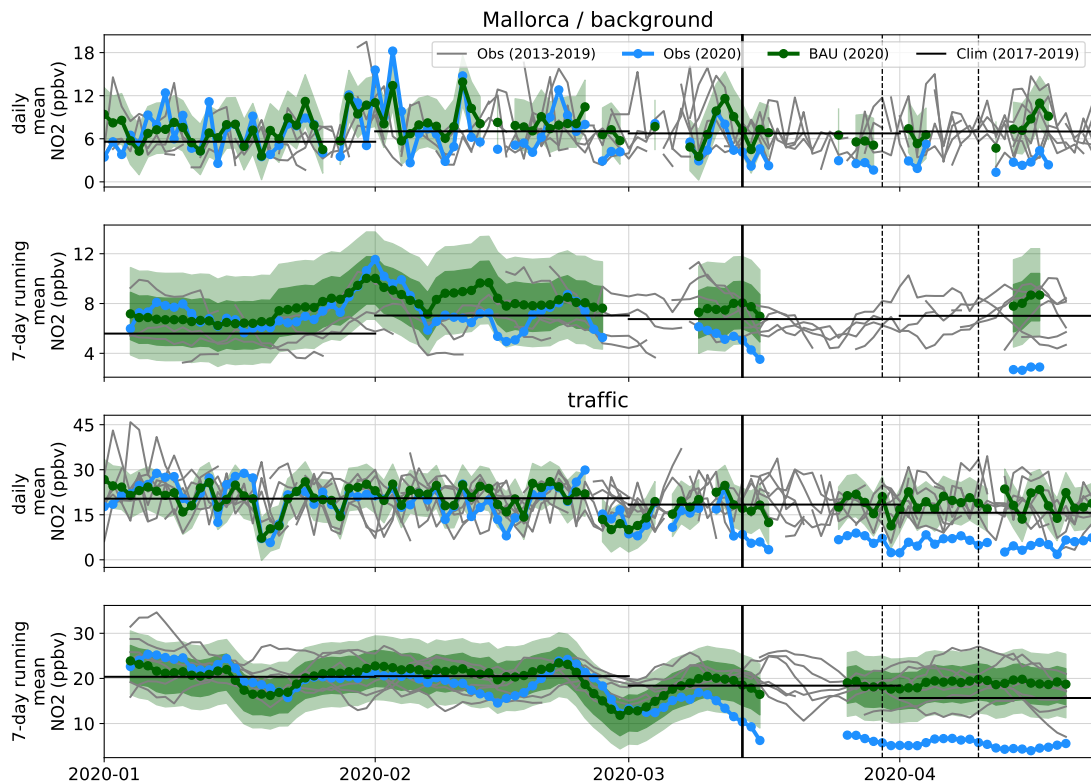
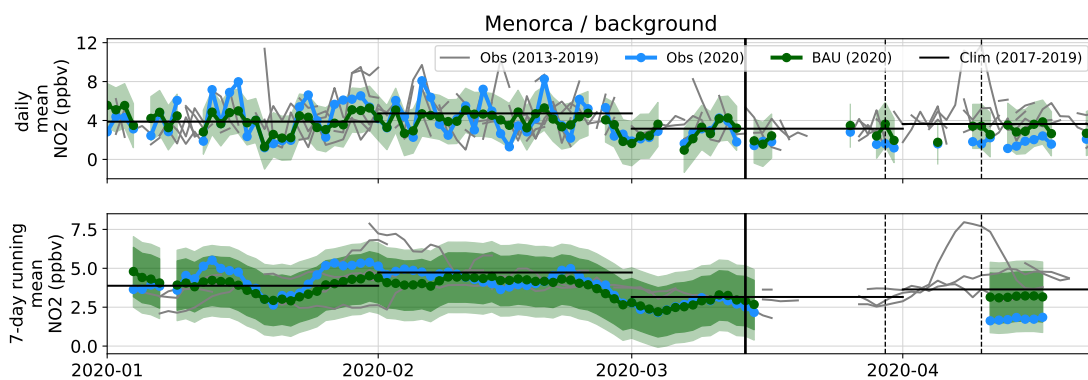
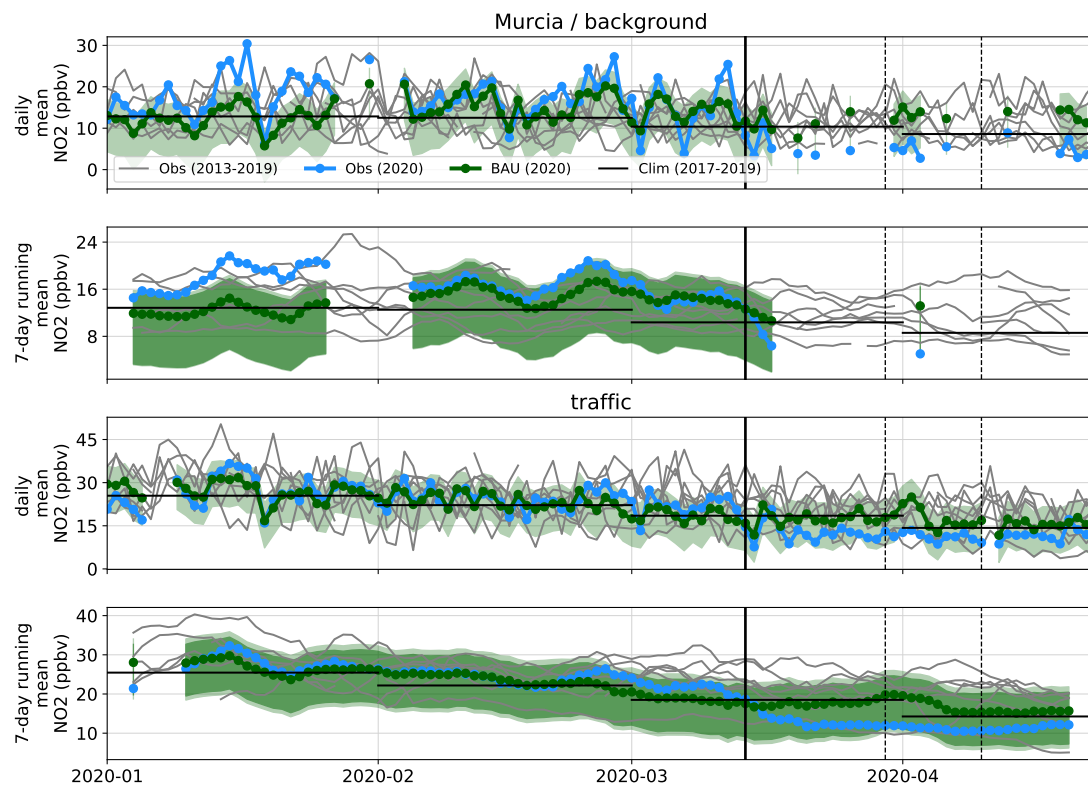


Figure S30. Similar to Fig. S1 for Mallorca province.



**Figure S31.** Similar to Fig. S1 for Menorca province.



**Figure S32.** Similar to Fig. S1 for Murcia province.

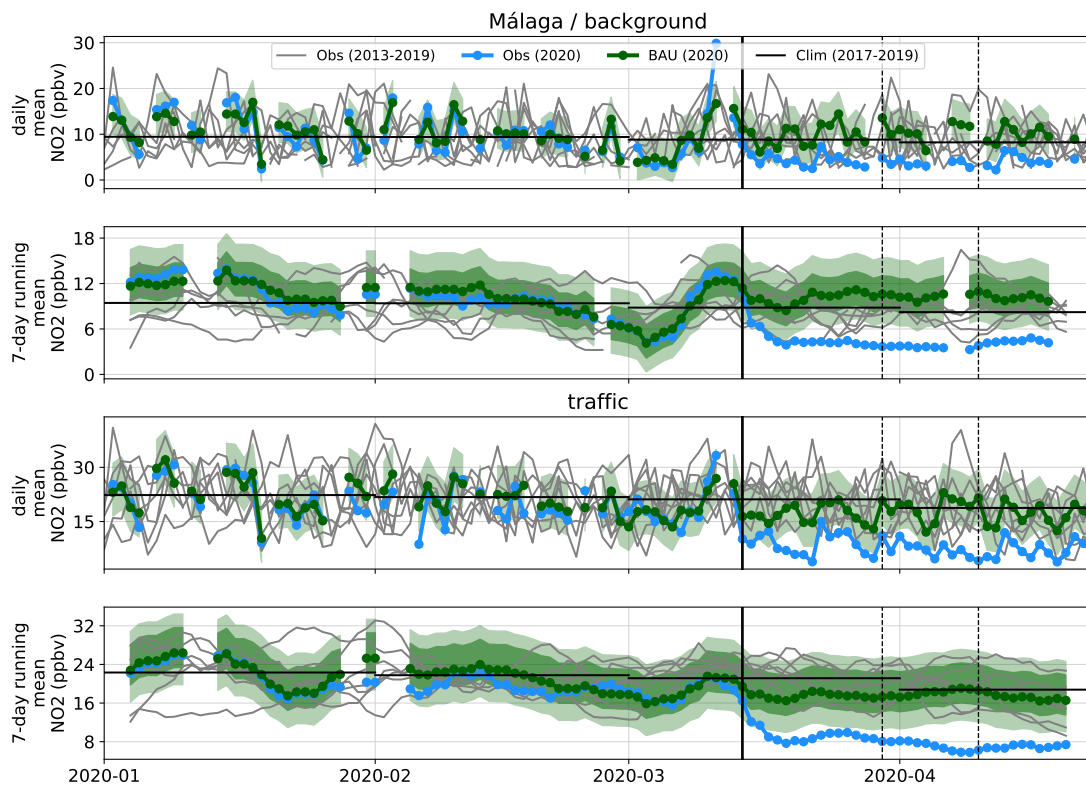
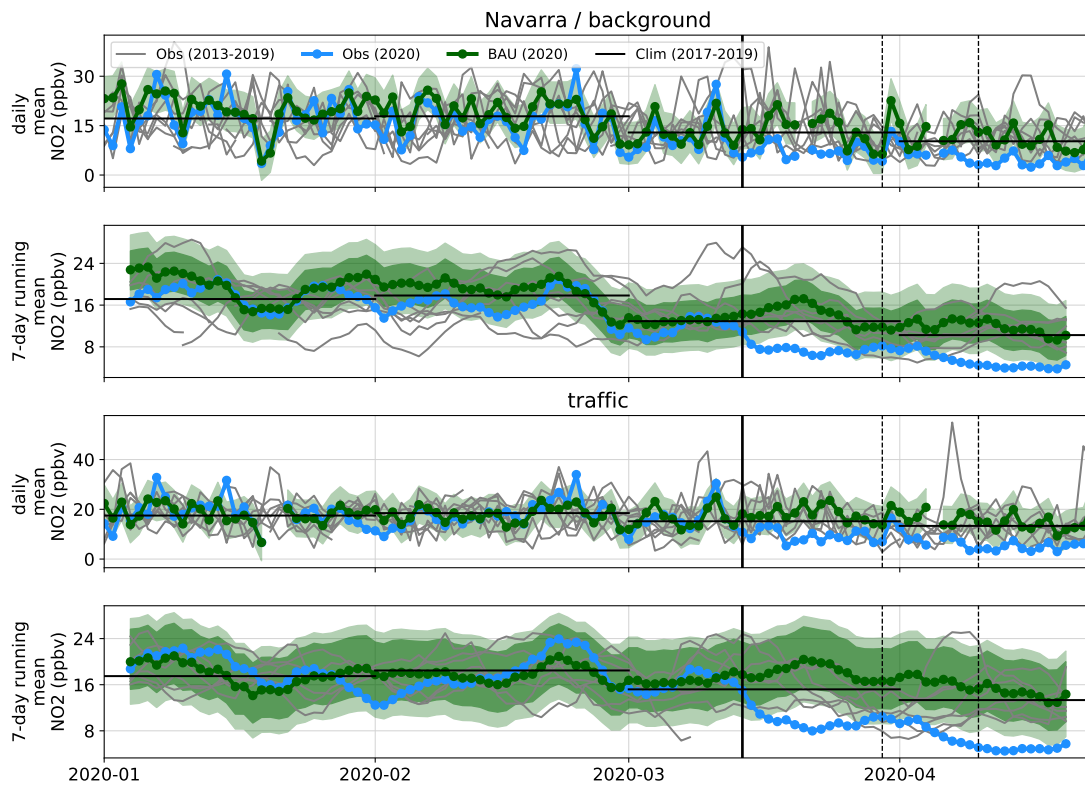
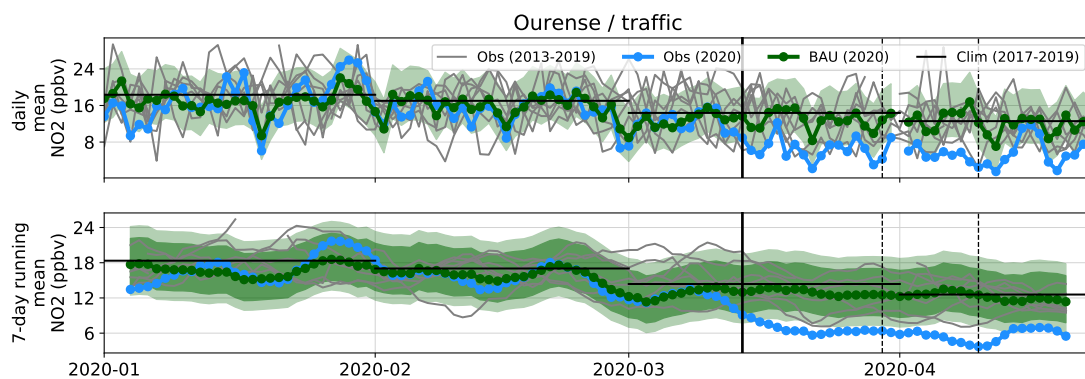


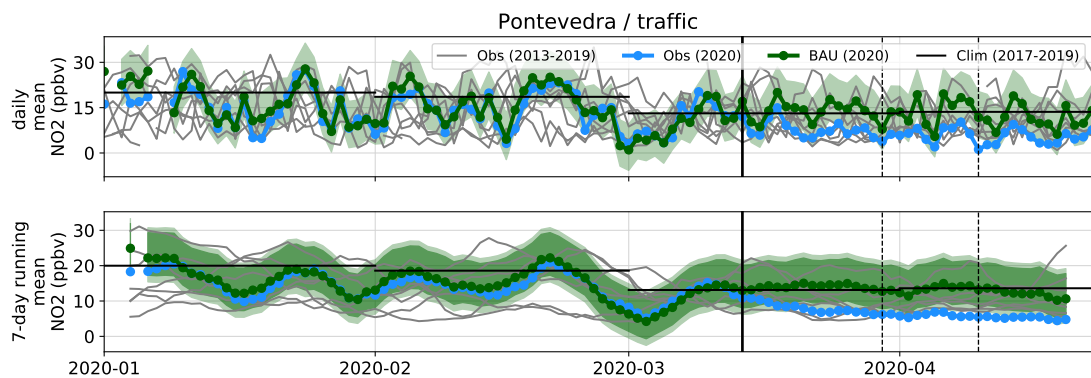
Figure S33. Similar to Fig. S1 for Málaga province.



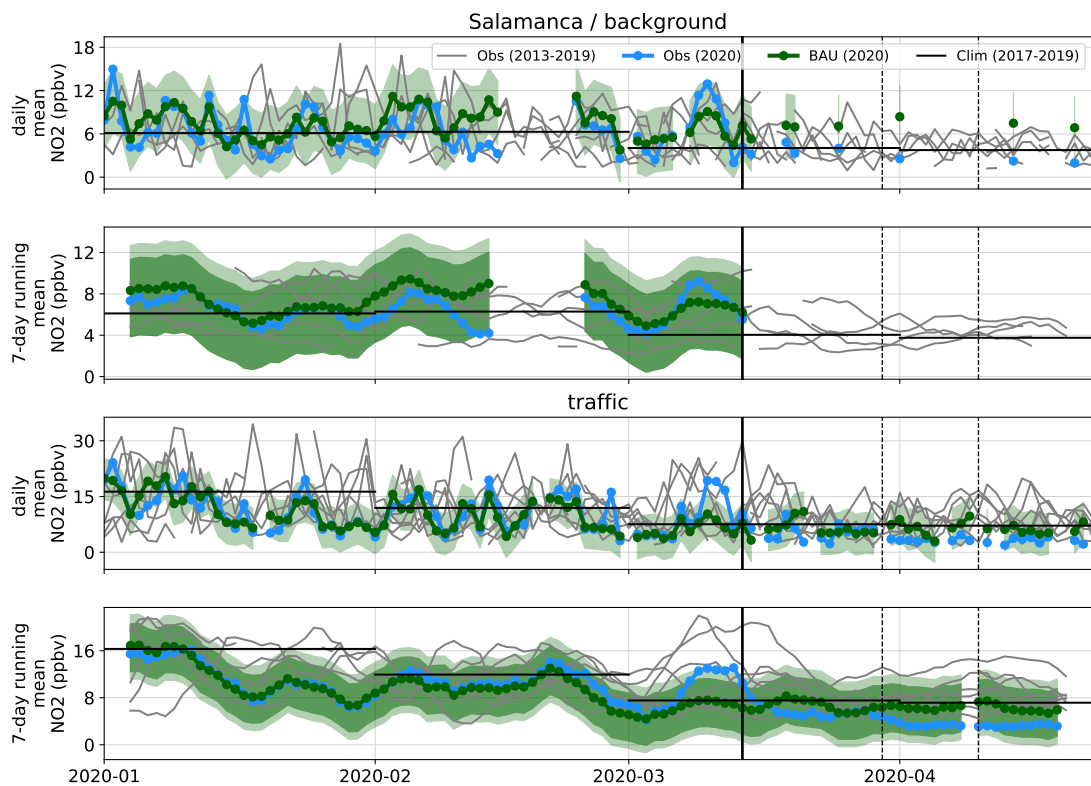
**Figure S34.** Similar to Fig. S1 for Navarra province.



**Figure S35.** Similar to Fig. S1 for Ourense province.



**Figure S36.** Similar to Fig. S1 for Pontevedra province.



**Figure S37.** Similar to Fig. S1 for Salamanca province.

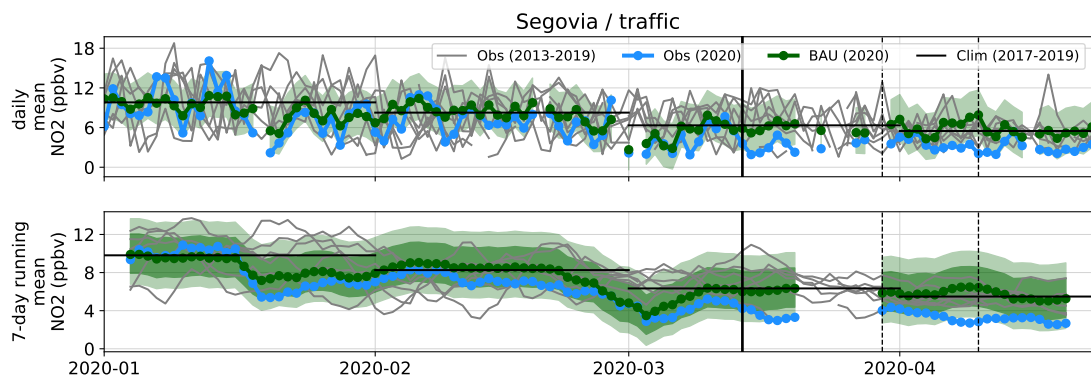


Figure S38. Similar to Fig. S1 for Segovia province.

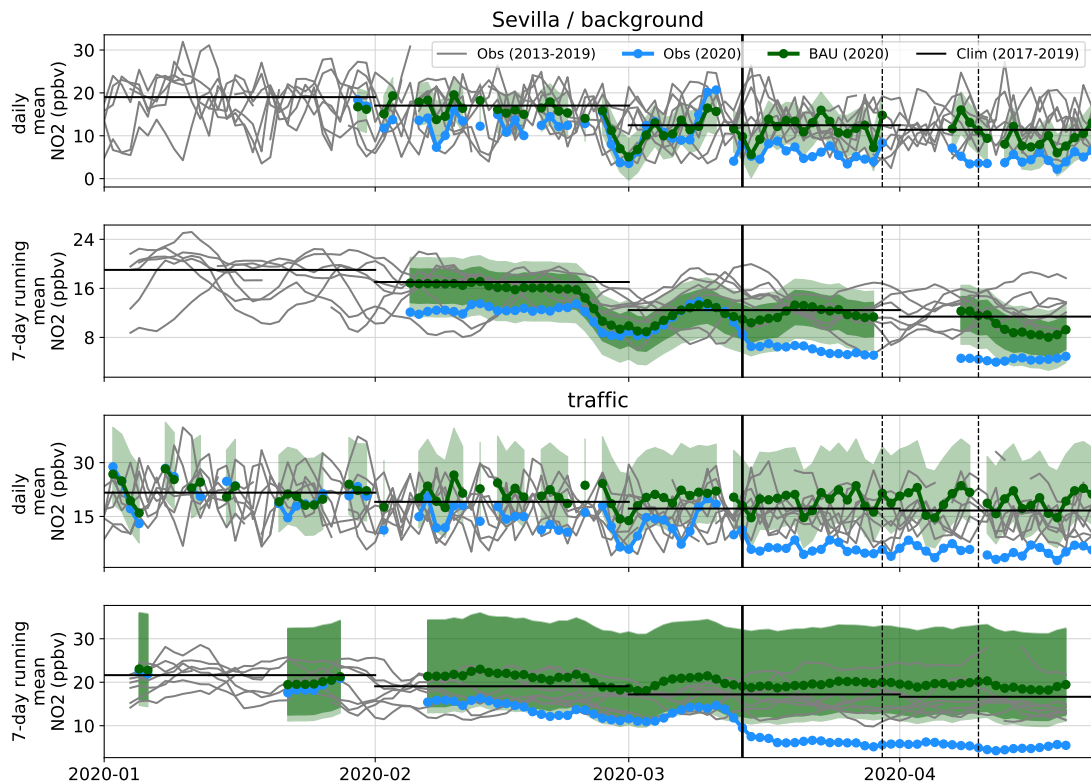
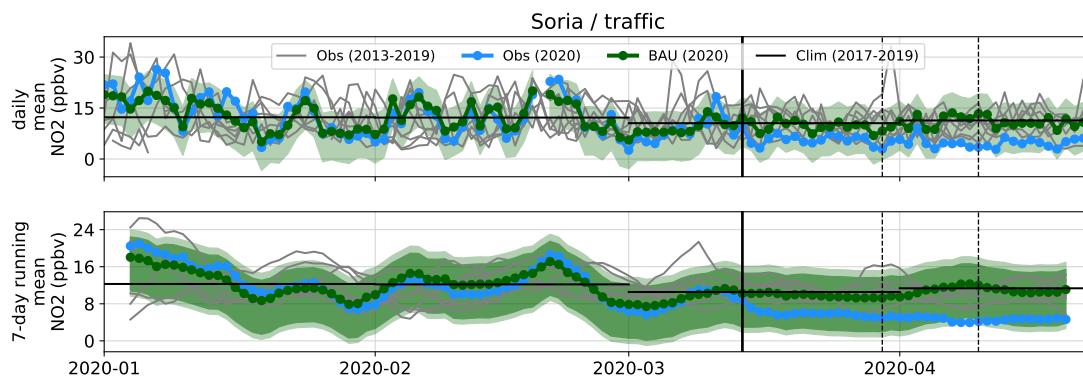
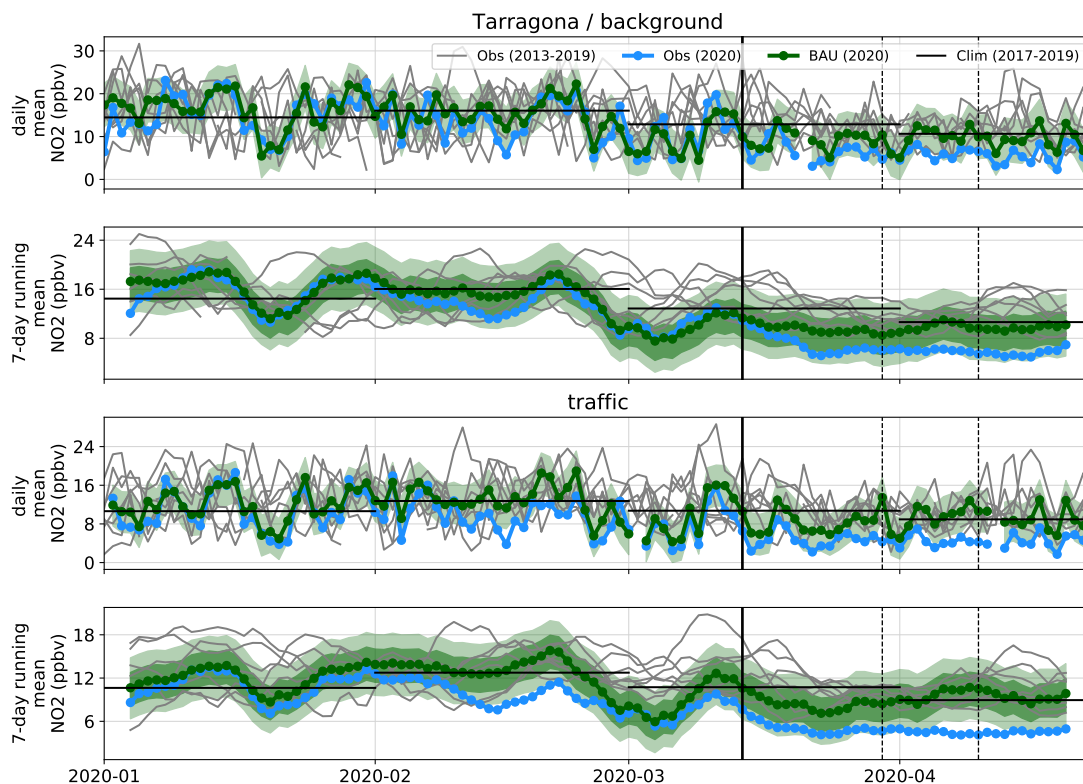


Figure S39. Similar to Fig. S1 for Sevilla province.

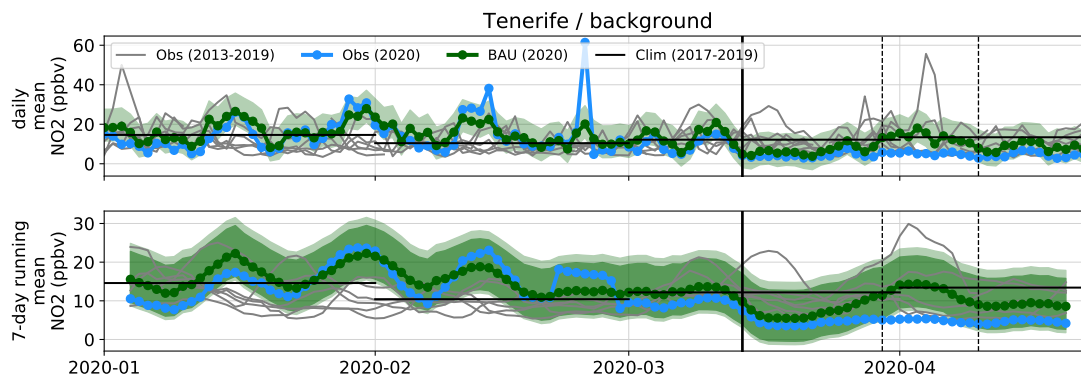




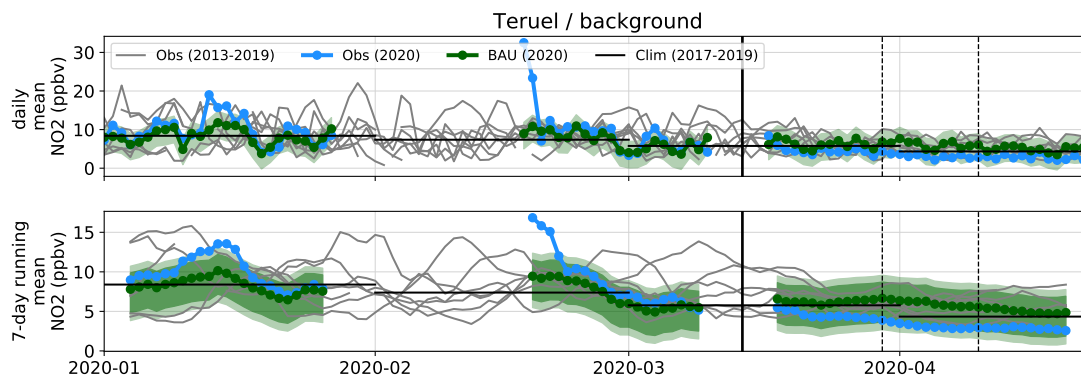
**Figure S40.** Similar to Fig. S1 for Soria province.



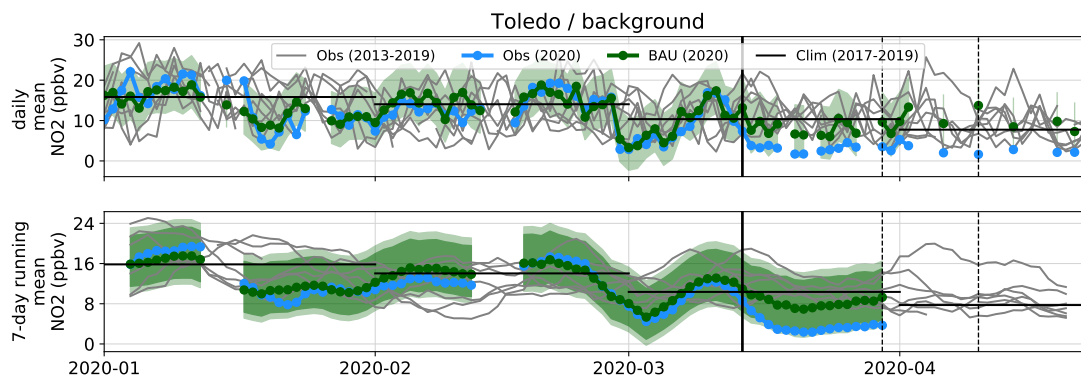
**Figure S41.** Similar to Fig. S1 for Tarragona province.



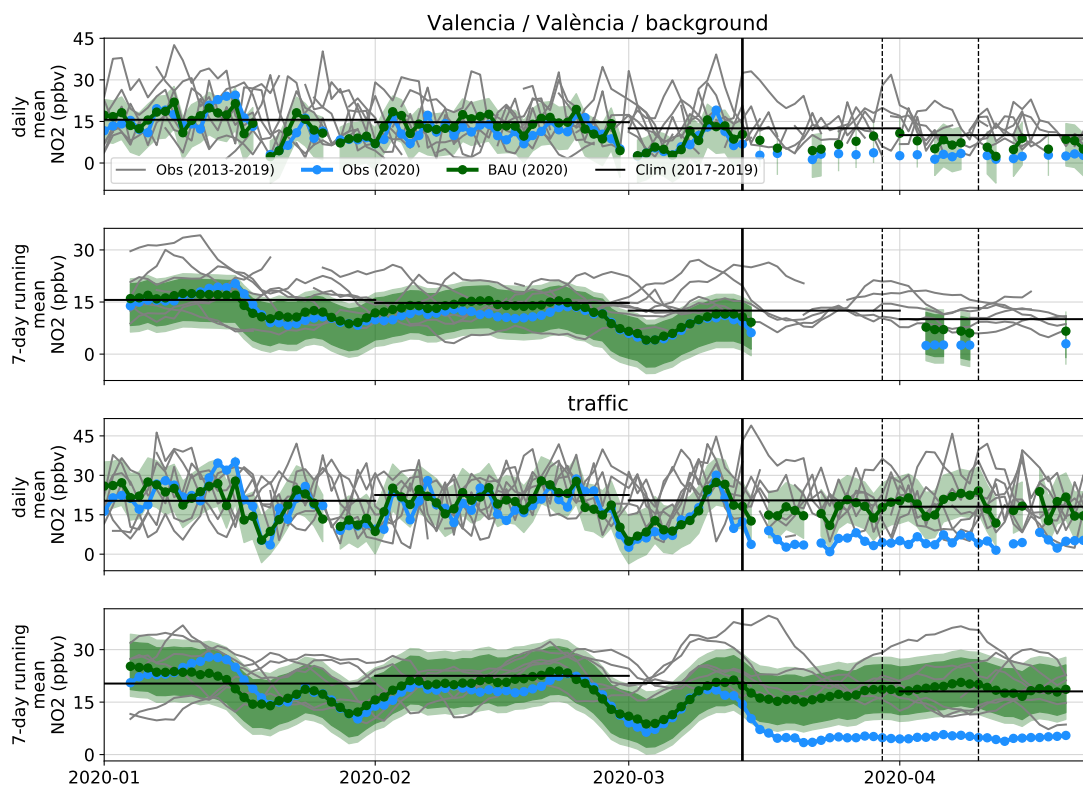
**Figure S42.** Similar to Fig. S1 for Tenerife province.



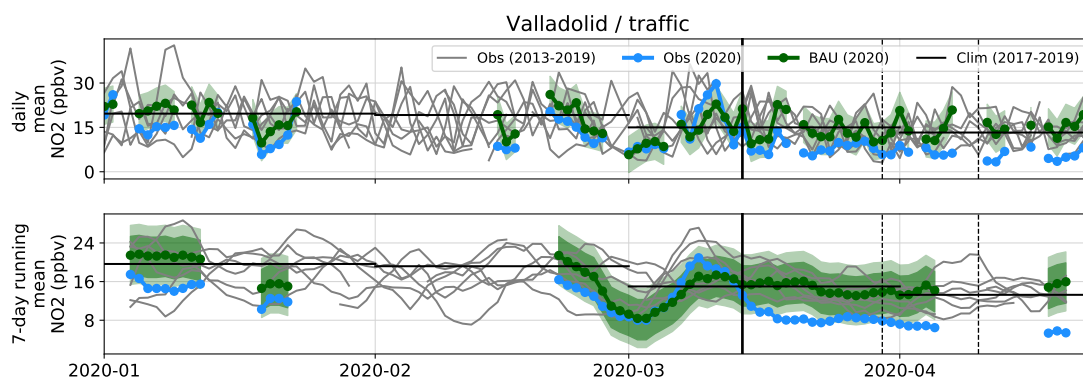
**Figure S43.** Similar to Fig. S1 for Teruel province.



**Figure S44.** Similar to Fig. S1 for Toledo province.



**Figure S45.** Similar to Fig. S1 for Valencia/València province.



**Figure S46.** Similar to Fig. S1 for Valladolid province.

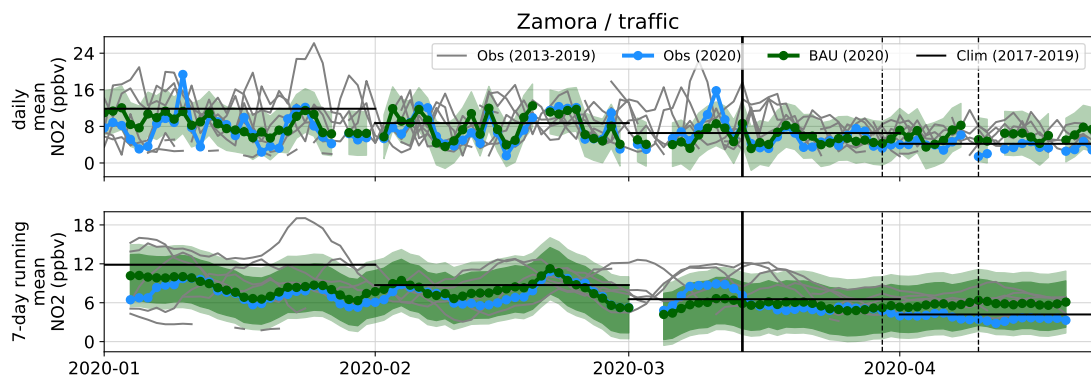


Figure S47. Similar to Fig. S1 for Zamora province.

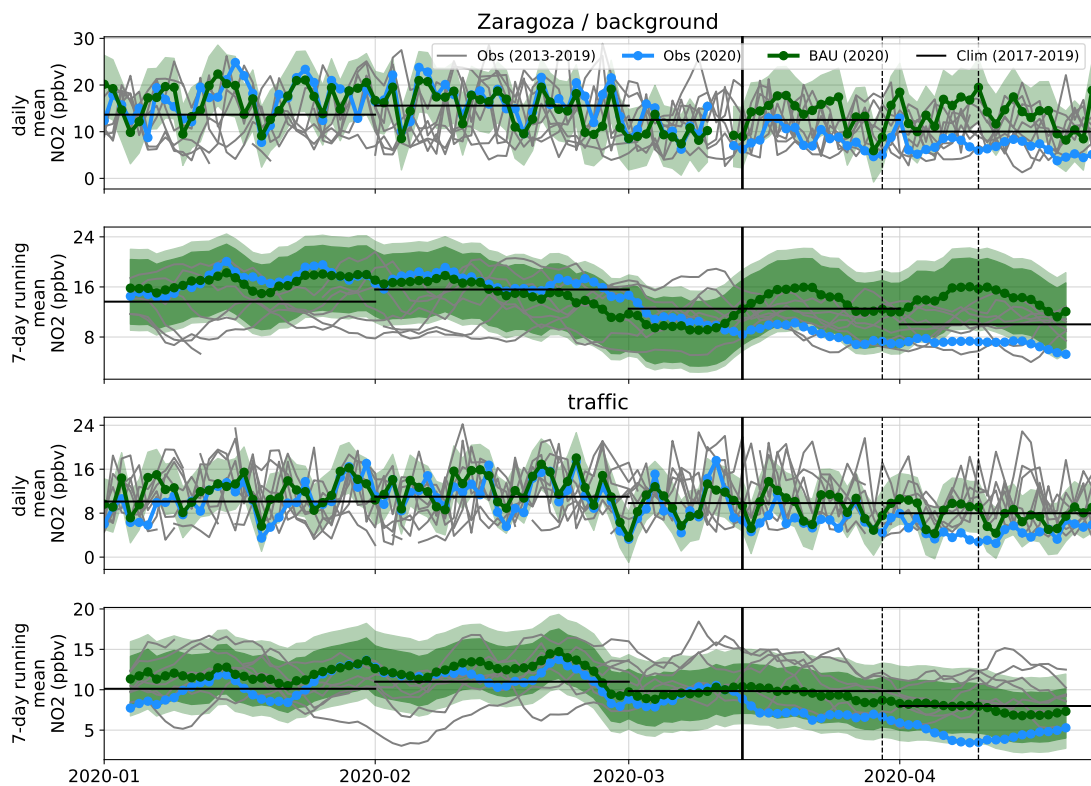


Figure S48. Similar to Fig. S1 for Zaragoza province.