

# XLStoXML 2.0 Beta 1

User manual

## Content

- Introduction.....page 1
- Software licence.....page 1
- App setup.....page 2
- Uploading files.....page 2
- Converting files.....page 2
- Customizing your convert.....page 3
- Renaming XML tags.....page 5
- Reading “Console” output.....page 6
- General settings.....page 7

# Introduction

XLStoXML is a cross-platform software written in Java to automate the translation of tables (xls / xlsx files) to xml files. At the beginning, XLStoXML started as a simple tool for translating only test cases written in a xls file, but now this software has grown to a more complete software covering a wide range of spreadsheets.

This software pretend to be easy and intuitive as at the same time a powerful converting tool, anyway we bring you this guide as a way of contribute to users in being more productive or a quick help when they get stuck. In this document you will find a description of all the interface features. You will also find a bunch of examples of the conversion process, from the most simple to the most complex scenario, explained step by step.

For more information visit: <https://sourceforge.net/projects/xlstoxml>

## Software licence

Copyright 2016 XLStoXML

Licensed under the Apache License, Version 2.0 (the "License");  
you may not use this file except in compliance with the License.  
You may obtain a copy of the License at

<http://www.apache.org/licenses/LICENSE-2.0>

Unless required by applicable law or agreed to in writing, software distributed under the License is distributed on an "AS IS" BASIS, WITHOUT WARRANTIES OR CONDITIONS OF ANY KIND, either express or implied. See the License for the specific language governing permissions and limitations under the License.

See the License for the specific language governing permissions and limitations under the License.



[xlstoxml.sourceforge.net](https://sourceforge.net/projects/xlstoxml)

# App Setup

For all platforms (Windows, Linux or Mac) follow these steps to get XMLtoXLS ready to use:

1. First download XMLtoXLS 2.0 Beta from:  
<https://sourceforge.net/projects/xlstoxml/files/latest/download>
2. Then extract the file at any location
3. If you are using a linux platform, grant execute access to the jar file
4. Then you just have to double click the jar file to execute it

For windows users, you can download an installer that simplify the setup task:

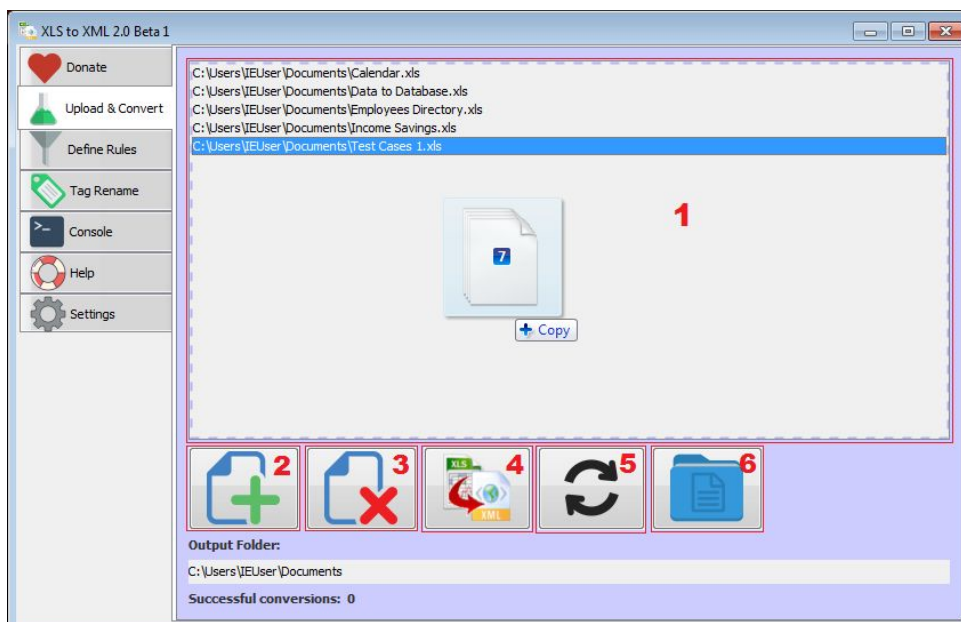
<https://sourceforge.net/projects/xlstoxml/files/Beta%20Preview/XLStoXML2.0beta1%20Setup.exe/download>

## Uploading files

Before start converting, first you have to upload the files you want to convert. To do that you have to press “add file” icon and search for the files, or you just drag and drop the files into the file list.

## Converting files

After you have uploaded the files, select the ones you want to convert and press convert convert button. For convert multiple files at the same time, press *shift* or *ctrl* button and click on the file list items. The conversion output is stored in a default location, but you can change it by pressing the folder icon.



1. **Drop section:** Lists the uploaded XLS/XLSX files, also let you drag & drop files to this section.
2. **Add button:** When pressed a window is opened to select the XLS/XLSX files.
3. **Remove button:** Removes the selected files.
4. **Convert button:** Converts the selected files.
5. **Refresh button:** Refresh the file list and removes files that doesn't exist at the specified location.
6. **Folder button:** Opens a window to select the output folder where the XML files are stored.

## Customizing your convert



The conversion is done without doing any configuration, but if the default mapping between tables and tags is not what you expected you can try playing with the mapping configuration.

To add a new configuration rule you can press the green plus button.

To remove one or more rules, select the rules and press the red button.

The arrows buttons are used to reorder the rules. This is important, because the rule on top will have priority if there are two or more rules in conflict. For example, you can define a rule for all XLS tabs and then add a new rule for a particular XLS tab.

## Parsing rules table:

- Each row represent a rule that will be applied to the input files when converting.
- Navigation: You can navigate using arrow and scrolling if the there are a lot of rules.
- Inline editing: Each cell can be editable with doing double click. Some of them can not be editable because some of the properties / columns does not correspond to the selected "Apply Rule To".
- "Apply Rule To" column: Indicates where the rule will be applied, to a XLS/XLSX File, to XLS/XLSX Tab or XLS/XLSX Column/Row.
- "Order" column: Rule is applied to tabs, rows, columns or cells that are in that order. Leave it "0" to don't match By order.
- "Name" column: Rule is applied to tabs, rows, columns or cells with that name. Leave it blank to don't match By name.
- "Encoding" column: Specify in which encoding should the XLS/XLSX file should be parsed. The program auto-detects the encoding, but this option can be customized.
- "Reorder" column: Specify the output tag order relative to the parent.
- "Is Main Wrapper" column: Setting this options to "yes" means that the tab or XLS file will be treated as main wrapper and the output tag will be
- "Has Header" column: Force to parse tabs with the first column/row as column/row header, and all the children tags will be grouped inside a parent tag or file, otherwise the parent tab or file won't have its own tag.
- "Cell Type" column: Determines how to treat the content of each cell: as a plain text, as CDATA, as a tag property, as a reference to other tab inside the file or as a inner tag.
- "Match By" column: Specify the orientación of files and tabs.

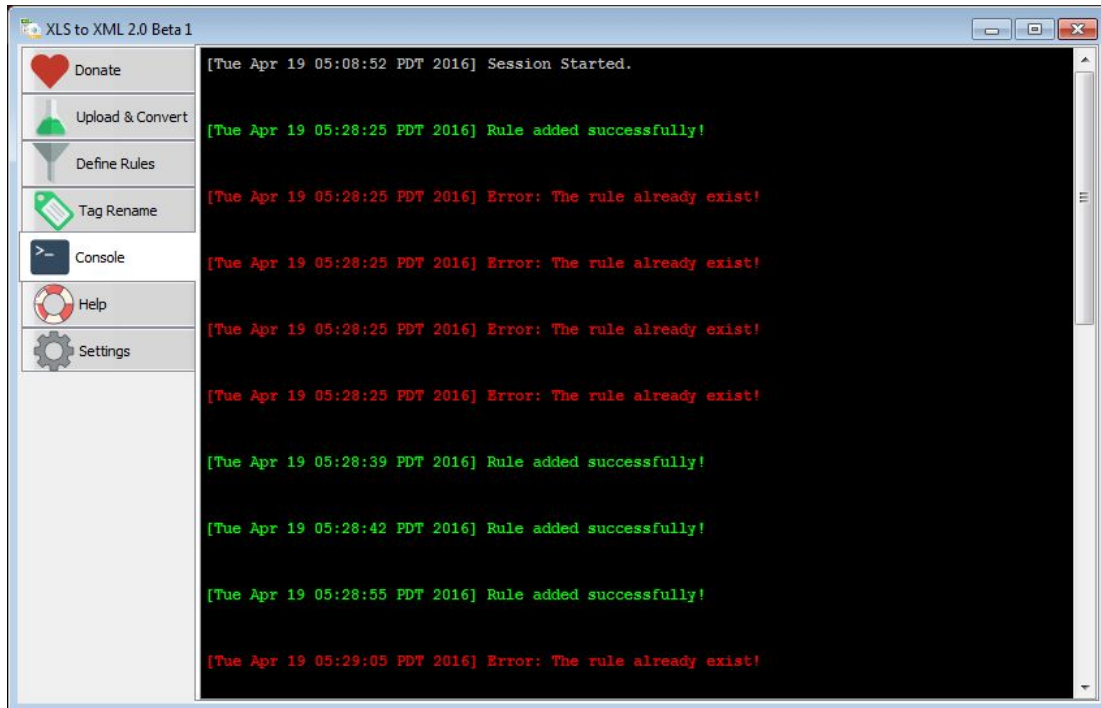
# Renaming XML tags



In this section you will be able to define some additional rules to change the tag names of the output XML. You have to specify the original tag name and the replacement, and if “Rename Children” checkbox is marked then the children tags will have this name.

The panel “Mapping” contains all the rename rules added. You can add a new rename rule by pressing the green plus button. The other buttons next to the add button are (in the same order): edit rule information, override / update rule information, remove rule, move rule up and move rule down.

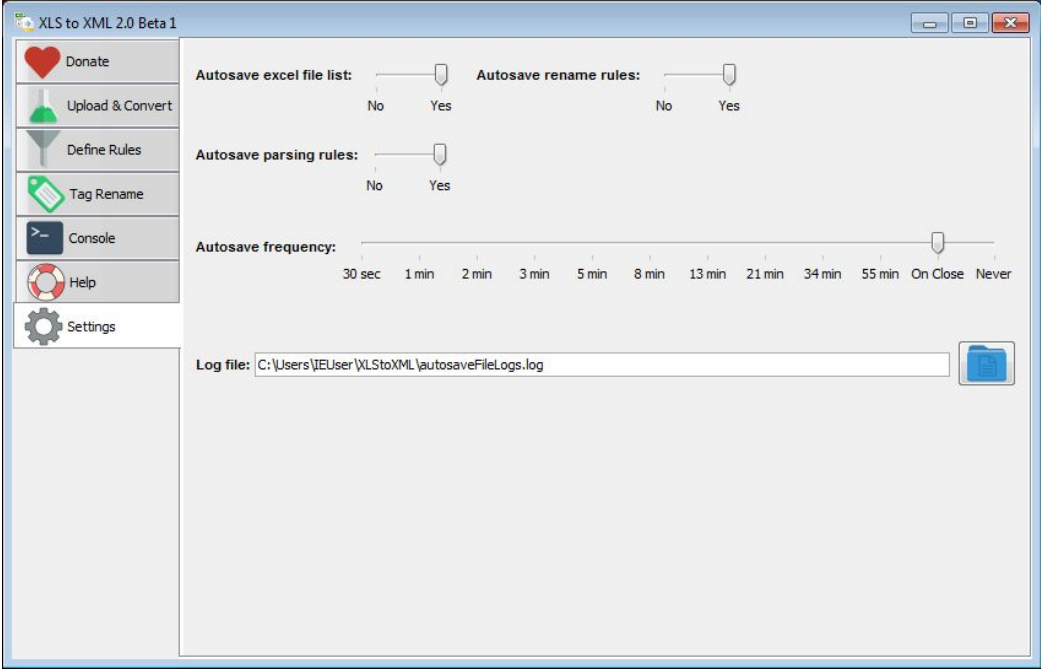
# Reading “Console” output



In this section you will be able to read the log file in a pretty way. It's not really a console, it's the log file content displayed in a panel. Across the sections you will have informative and error messages that will notify you about the success or not of what you are doing, but these messages are also stored in this console.

Each console log shows the date and time of when the message was displayed, the message displayed and has a color indicating the message type: red for an error, yellow for a warning, green for a successful operation and grey for informational messages.

# General settings



In this section you can configure general program settings, like the autosave frequency or the place of the output log file.