



PORTMIAMI™

CRUISE CAPITAL OF THE WORLD



2017 Cruise Guide



As Miami's second-largest economic engine, PortMiami is home to nearly 20 cruise brands and 45 cruise ships, supports more than 207,000 jobs and has a \$27 billion economic impact on South Florida. The port's location in the heart of Miami makes it a prime destination for cruise passengers from around the world to discover all Miami has to offer. With its beautiful beaches, variety of entertainment and dining options, and our world-class city's vibrant culture – Miami offers experiences that make cruising from our Port second to none.

Carlos A. Gimenez
Mayor, Miami-Dade County



We thank our cruise partners for trusting us with their business. We're committed to providing the best experience and promise to continue exceeding our customers' expectations in efforts to maintain our status as Cruise Capital of the World.

Juan M. Kuryla, PPM
Director and CEO, PortMiami



Cruising from PortMiami is Only Getting Better More Cruise Brands and New Build Ships

Modern cruising began 50 years ago at PortMiami and there is no doubt that the Cruise Capital of the World continues to expand as the world's leading cruise port. Last year, PortMiami set another world record in cruise passengers, nearly 5 million passengers sailed through PortMiami—more than any other port in the world.

It is an exciting time at PortMiami! The port is poised for yet another exceptionally strong cruise season as it welcomes a host of new cruise brands and new build ships that rank among the most innovative vessels on the seas.

The cruise season kicked-off with the arrival of Regent Seven Seas Cruises, Seven Seas Explorer and Carnival Cruise Line's largest ship Carnival Vista. Celebrity Cruises, Celebrity Equinox, will offer year-round sailings beginning in summer 2017. MSC Cruises will homeport its new build ship, MSC Seaside offering seven-day cruises to the Caribbean starting winter 2017. Many of PortMiami's current cruise partners are also expanding their Miami fleets. Aida Cruises added two cruise ships to its PortMiami line-up, Aida Diva and Aida Luna. Additionally, Carnival Corporation's Fathom Cruises continues to offer seven-day voyages aboard the MV Adonia. Furthermore, PortMiami is looking forward to welcoming more new build vessels including Norwegian Bliss (2018), Carnival Horizon (2018) and Virgin Voyages will be offering seven-day vacations to the Caribbean in 2020.

PortMiami's cruise facilities are the most modern in the world, providing easy passenger boarding and departure. By continuously investing in cruise facility improvements, PortMiami maintains its position as market leader and is prepared for the newest generation of cruise vessels. Currently on the drawing board are plans to expand the cruise footprint, including options for the modernization of its cruise facilities to accommodate the industry's new generation of cruise ships solidifying the Port's position as the Cruise Capital of the World.

With a variety of cruise brands berthing many ships PortMiami is clearly the departure destination of choice for cruises to the Bahamas, the Caribbean, Mexico and beyond, offering cruise vacations for every taste and budget—from family fun to luxury cruising. PortMiami's ships have amenities from rock climbing walls to five star meals onboard. Start or end your vacation in Miami and add a few days to spend on a Miami land excursion. A great way to experience contemporary Miami—you will discover family-friendly activities that celebrate our past and our present. You will also learn about Miami's past through its picturesque architecture, historic landmarks and popular high-end restaurants and casual dining.

Things to Do in Miami

PortMiami partners with the Greater Miami Convention and Visitors Bureau to promote awareness of Miami as the premier homeport, as well as a leading destination offering pre- and post-cruise activities. Miami-Dade County offers first-class accommodations, world-class dining, culturally diverse attractions, endless shopping and miles of beautiful beaches. Visit cruisemiami.org for more information on enticing offers of things to do in Miami.

Nearby Entertainment

Looking for activities near PortMiami? Use the DWNTWN City Guide at www.miamidda.com for nearby restaurants, clubs, performances, spas and shopping options.

Get the 411 on Miami Beach

Miami Beach offers shopping, dining, nightclub and beach-going action year-round. See what's happening on your next visit.

Where the Locals Go

Looking for a little local flavor? Escape, explore and discover the way locals do. Visit historical estates like Vizcaya Museum & Gardens or the Deering Estate at Cutler. Our beaches are among the best in the world and our EcoAdventures are unparalleled.

Nearby Hotels

There are several hotels within a short distance of PortMiami. Check the Greater Miami Convention and Visitors Bureau's website at www.miamiandbeaches.com or call 1-800-933-8448.





LIFEGUARD
OFF DUTY

100

Directions & Transportation

PortMiami is easily accessible by car or taxi; however, most cruise lines offer shuttle service directly from Miami International Airport. Other ground transportation options like shuttles and limousines are also available.

Using Public Transit

If you are interested in using public transit at any time during your trip, Miami-Dade Transit's reloadable EASY Ticket* can be purchased at Miami International Airport from the vending machine located in the bus waiting room on the ground level of Central Terminal E (arrivals), and at dozens of other locations throughout Miami-Dade County. Use the Trip Planner or Transit Tracker mobile phone app to get around with ease. Miami-Dade Transit's Visitor Guide, has lots of ways to explore Miami using public transit, please visit www.miamidade.gov/transit/visitors.asp

By Rail

Metrorail's Orange Line can get you from MIA to Downtown Miami in less than a half hour. Use the Miami-Dade Transit Tracker application for iPhone and Android mobile devices to plan your route.

By Trolley

The City of Miami's Coral Way Route stops on-Port every 15 to 20 minutes Monday through Saturday from 6:30 a.m. to 8 p.m. For more information, please visit: www.miamitrolley.com.

Directions to PortMiami

PortMiami is located at 1015 North America Way, Miami, Florida, 33132. Once on-port follow signs to your destination (Port Offices, Cruise Terminals, etc.).

Via the PortMiami Tunnel

FROM THE NORTH:

Take I-95 South to Eastbound I-395 (Miami Beach) Ramp. Continue on I-395 East and Tunnel Entrance is on your left.

FROM THE SOUTH:

Take SR-826 North to SR-836 East; head Eastbound on SR-836 to I-395 East (Miami Beach). Continue on I-395 East/MacArthur Causeway and Tunnel Entrance is on your left.

Take I-95 North to Eastbound I-395 (Miami Beach) Ramp. Continue on I-395 East/MacArthur Causeway and Tunnel Entrance is on your left.

FROM MIAMI BEACH:

Take I-395/MacArthur Causeway Westbound and Exit on Biscayne Boulevard ramp. Make a U-turn on N. Bayshore Drive to enter Eastbound MacArthur Causeway. Continue on Eastbound I-395 and Tunnel Entrance is on your left.

Via Downtown/Port Bridge

From the North: Take I-95 South and exit 3B-Bayside. Head south to Northeast 5th Street and turn left. Fifth Street will lead onto the PortMiami Bridge. Continue over the bridge and follow signage to designated terminal.

From the South: Take I-95 North and exit at Northwest 2nd Street. Head straight to NW 5th Street and make a right. Fifth Street will lead onto the PortMiami Bridge. Continue over the bridge and follow signage to designated terminal.

Parking

Parking is conveniently available at all cruise terminals for \$20.00 per day (over-night) or short-term parking (daily) for a flat fee of \$7.00. Spaces are also available for over-length vehicles and trailers at special rates. Designated disabled permit parking spaces are available in each garage. All facilities are patrolled by security. Passengers may drop-off luggage at their designated terminal prior to parking. Complimentary shuttle service from each parking facility to each terminal door is offered to all passengers.

Cell Phone Parking Lots

PortMiami has cell phone waiting lots for automobile drivers picking-up debarking cruise passengers. These lots are located across from Terminals B, E, and F.

Taxi Service

Taxicabs are available at all cruise terminals. The fare between the Miami International Airport and PortMiami is currently a flat rate of \$27.00.

Rental Cars

Several car rental agencies are permitted to do business at the Port and some agencies provide courtesy shuttle service to their remote locations off the Port. We suggest you contact your preferred car agency directly for the most up-to-date information and schedules.

Customer Service

Excellent customer service is a top priority at PortMiami. The Port is fully engaged in a comprehensive initiative to ensure that customer expectations are exceeded. The enhanced PortMiami website provides customer-friendly electronic access to a wealth of user information. Please visit us at www.portmiami.biz or contact us directly at pomservice@miamidade.gov by phone 305-347-4800.

Directory

DANTE B. FASCELL
PORTMIAMI
1015 North America Way
Miami, FL 33132
Tel: 305-347-4800
www.portmiami.biz

HOME PORT

AZAMARA CLUB CRUISES
1050 Caribbean Way
Miami, FL 33132
Tel: 877-999-9553
www.azamaracruises.com

CARNIVAL CRUISE LINE
3655 NW 87 Avenue
Miami, FL 33178
Tel: 800-327-9501
www.carnival.com

CELEBRITY CRUISES
1050 Caribbean Way
Miami, FL 33132
Tel: 800-437-3111
www.celebrity.com

CRYSTAL CRUISES
1501 Biscayne Blvd.
Suite 500
Miami, FL 33132
Tel: 310-785-9300
www.crystalcruises.com

DISNEY CRUISE LINE
210 Celebration Place
Suite 400
Kissimmee, Florida 34747-4600
Tel: 800-951-3532
www.disneycruise.disney.go.com

FATHOM CRUISES
800 5th Avenue
Suite 2600
Seattle, WA 98104
Tel: 855-932-8466
www.fathom.org

MSC CRUISES
6750 North Andrews Avenue
Suite 100
Fort Lauderdale, FL 33309
Tel: 877-665-4655
www.msccruisesusa.com

NORWEGIAN CRUISE LINE
7665 Corporate Center Drive
Miami, FL 33126
Tel: 800-327-7030
www.ncl.com

OCEANIA CRUISES
7665 Corporate Center Drive
Miami, FL 33126
Tel: 855-623-2642
www.oceaniacruises.com

REGENT SEVEN SEAS CRUISES
7665 Corporate Center Drive
Miami, FL 33126
Tel: 800-285-1835
www.rssc.com

ROYAL CARIBBEAN INTERNATIONAL
1050 Caribbean Way
Miami, FL 33132
Tel: 800-327-6700
www.royalcaribbean.com

SEABOURN CRUISE LINE
300 Elliot Avenue West
Seattle, WA 98119
Tel: 800-929-9391
www.seabourn.com

VIKING OCEAN CRUISES
5700 Canoga Avenue, Ste. 200
Woodland Hills, CA 91467
Tel: 877-66VIKING
www.vikingcruises.com

VIRGIN VOYAGES
1200 S. Pine Island Road
Suite 300
Plantation, FL 33324
Tel: 954-361-9500
www.virgincruises.com

PORT OF CALL

AIDA CRUISES
Am Strande 3d
D-18055 Rostock
Germany
Tel: +49 381 4440
www.aida.de

FRED OLSEN CRUISES
Fred. Olsen House
White House Road
Ipswich, Suffolk, IP1 5LL
Tel: +44 (0) 1473 742424
www.fredolsencruises.com

HAPAG LLOYD CRUISES
Ballindamm 25
20095 Hamburg, Germany
Tel: +49 40 30703070
www.hl.cruises.com

PRINCESS CRUISES
1801 SE 20th St
Fort Lauderdale, FL 33316
Tel: 800-774-6237
www.princesscruises.com

THE WORLD
1551 Sawgrass Corporate Pkwy
Suite 200
Fort Lauderdale, FL 33323
Tel: 954-538-8449
www.aboardtheworld.com



Cruise Ships

AZAMARA CLUB CRUISES

Azamara Quest.....10

CARNIVAL CRUISE LINE

Carnival Glory.....12

Carnival Sensation.....13

Carnival Splendor.....14

Carnival Victory.....15

Carnival Vista.....16

CELEBRITY CRUISES

Celebrity Reflection.....18

Celebrity Infinity.....18

Celebrity Eclipse.....19

Celebrity Equinox.....20

CRYSTAL CRUISES

Crystal Serenity.....22

DISNEY CRUISE LINE

Disney Magic.....24

FATHOM CRUISES

Adonia.....27

MSC CRUISES

MSC Divina.....28

MSC Seaside.....29

NORWEGIAN CRUISE LINE

Norwegian Escape.....30

Norwegian Getaway.....31

Norwegian Jade.....32

Norwegian Jewel.....33

Norwegian Pearl.....34

Norwegian Sky.....35

Norwegian Sun.....36

OCEANIA CRUISES

Oceania Insignia.....38

Oceania Riviera.....39

Oceania Regatta.....40

Oceania Sirena.....41

Oceania Marina.....42

REGENT SEVEN SEAS CRUISES

Seven Seas Explorer.....44

Seven Seas Navigator.....45

Seven Seas Mariner.....46

ROYAL CARIBBEAN INTERNATIONAL

Empress of the Seas.....48

Enchantment of the Seas.....50

Navigator of the Seas.....51

VIKING CRUISES

Viking Sky.....52

***Check company websites for recent updates.**



Azamara Quest

Tonnage: 30,277 Length: 593' Passengers: 686

ITINERARY
PORTS OF CALL
2017

11-DAY EASTERN CARIBBEAN (round trip from Miami)

St. John, Iles Des Saintes, Roseau, Nevis, St. Barts, Virgin Gorda
Jan. 4; Mar. 10

ITINERARY
PORTS OF CALL
2017

11-DAY PANAMA CANAL (from Miami to Costa Rica)

Cartagena, Panama Canal, Fuerte Amador, Golfito, Puerto Quepos, Puntarenas, Puerto Caldera
Jan. 15

ITINERARY
PORTS OF CALL
2017

12-DAY WESTERN CARIBBEAN (round trip from Miami)

Mobile, New Orleans, Merida, Cozumel
Mar. 21

ITINERARY
PORTS OF CALL
2017

16-DAY TRANSATLANTIC (from Miami to Barcelona)

Ponta Delgada, Huelva, Gibraltar, Tangier, Barcelona
Apr. 2

ITINERARY

PORTS OF CALL

2017

11-DAY CENTRAL AMERICA (round trip from Miami)

Key West, Grand Cayman, Puerto Limon, Colon, Cartagena

Nov. 20

ITINERARY

PORTS OF CALL

2017

8-DAY EASTERN CARIBBEAN (from Miami to San Juan)

Labadee, St. Barts, Antigua, St. Kitts, Tortola, San Juan

Dec. 1

ITINERARY

PORTS OF CALL

2017

13-DAY EASTERN CARIBBEAN (round trip from Miami)

Coco Cay, St. Barts, Roseau, Barbados, St. Lucia, Antigua, Virgin Gorda, Key West

Dec. 22



Carnival Glory

Tonnage: 110,000 Length: 952' Passengers: 2,974

YEAR ROUND

ITINERARY

PORTS OF CALL

2017

7-DAY EASTERN CARIBBEAN (round trip from Miami)

Half Moon Cay or Amber Cove, St. Thomas, San Juan, Turks & Caicos

Jan. 7, 21; Feb. 4, 18; Mar. 18; Apr. 1, 15, 29; May 13, 27; Jun. 10, 24;
Jul. 8, 22; Aug. 5, 19; Sep. 2, 16, 30; Oct 14, 28, Nov. 11, 25; Dec. 9, 23

ITINERARY

PORTS OF CALL

2017

7-DAY WESTERN CARIBBEAN (round trip from Miami)

Grand Cayman, Roatan, Belize, Cozumel

Jan. 14, 28; Feb. 11, 25; Mar. 11, 25; Apr. 8, 22; May 6, 20; Jun. 3, 17; Jul. 1,
15, 29; Aug. 12, 26; Sep. 9, 23; Oct 7, 21; Nov. 4, 18; Dec. 2, 16, 30

Carnival Sensation

Tonnage: 70,367 Length: 855' Passengers: 2,052



YEAR ROUND

ITINERARY

PORTS OF CALL

2017

5-DAY EASTERN CARIBBEAN (round trip from Miami)

Ocho Rios, Grand Cayman

Jan. 7, 21; Feb. 4; Mar. 4, 18; Apr. 1, 15, 29; May 8, 22; Jun. 5, 19, Jul. 3, 17, 31; Aug. 14, 28; Sep. 11, 25; Oct. 9, 23; Nov. 6, 20; Dec. 4, 18, 28

ITINERARY

PORTS OF CALL

2017

4-DAY WESTERN CARIBBEAN (round trip from Miami)

Key West, Cozumel

Jan. 12, 26; Mar. 9, 23; Apr. 6, 20; May 4, 18; Jun. 1, 15, 29; Jul. 13, 27; Aug. 10, 24; Sep. 7, 21; Oct. 5, 19; Nov. 16, 30; Dec. 14

ITINERARY

PORTS OF CALL

2017

5-DAY BAHAMAS (round trip from Miami)

Freeport or Turks & Caicos, Half Moon Cay, Nassau

Jan. 2, 16, 30; Feb. 27; Mar. 13, 27; Apr. 10, 24; Oct. 14, 28; Nov. 11, 25; Dec. 9, 23



Carnival Splendor

Tonnage: 113,300 Length: 950' Passengers: 3,006

ITINERARY	5-DAY EASTERN CARIBBEAN (round trip from Miami)
PORTS OF CALL	Montego Bay, Grand Cayman
2017	Jan. 3
ITINERARY	5-DAY BAHAMAS (round trip from Miami)
PORTS OF CALL	Turks & Caicos, Half Moon Cay, Nassau
2017	Dec. 26
ITINERARY	7-DAY WESTERN CARIBBEAN (round trip from Miami)
PORTS OF CALL	Grand Cayman, Cozumel, Belize City, Roatan
2017	Jan. 8, 22; Feb. 19; Mar 5, 19; Apr. 2; Apr. 16, 30; Oct. 29, Nov. 12, 26; Dec. 10
ITINERARY	7-DAY EASTERN CARIBBEAN (round trip from Miami)
PORTS OF CALL	Grand Turk, San Juan, St. Thomas, Amber Cove,
2017	Jan. 15, 29; Feb. 12, 26; Mar. 12, 26; Apr. 9, 23; Oct. 22; Nov. 5, 19; Dec. 3, 31
ITINERARY	9-DAY EASTERN CARIBBEAN (round trip from Miami)
PORTS OF CALL	Grand Turk, Amber Cove, San Juan, St. Kitts, St. Maarten
2017	Dec. 17

Carnival Victory

Tonnage: 102,000 Length: 893' Passengers: 2,758



YEAR ROUND

ITINERARY

PORTS OF CALL

2017

3-DAY BAHAMAS (round trip from Miami)

Nassau

Jan. 6, 13, 20, 27; Feb. 3, 17, 24; Mar. 3, 10, 17, 24, 31; Apr. 7, 14, 21, 28;
May 5, 12, 19, 26; Jun. 2, 9, 16, 23, 30; Jul. 7, 14, 21, 28; Aug. 4, 11, 18, 25;
Sep. 1, 8, 15, 22, 29; Oct. 6, 13, 20, 27; Nov. 3, 10, 17, 24; Dec. 1, 8, 15, 28

ITINERARY

PORTS OF CALL

2017

4-DAY WESTERN CARIBBEAN (round trip from Miami)

Key West, Cozumel

Jan. 2, 9, 30; Feb. 6, 13, 20; Mar. 6, 13, 20, 27; Apr. 3, 10, 17, 24; May 1, 8,
15, 22, 29; Jun. 5, 12, 19, 26; Jul. 3, 10, 17, 24; Aug. 7, 14, 21, 28; Sep. 4,
11, 18, 25; Oct. 2, 9, 16, 23, 30; Nov. 6, 13, 27; Dec. 4, 11, 24, 31

ITINERARY

PORTS OF CALL

2017

4-DAY BAHAMAS (round trip from Miami)

Nassau, Halfmoon Cay

Feb. 27; Jul. 31; Nov. 20; Dec. 18

ITINERARY

PORTS OF CALL

2017

2-DAY BAHAMAS (round trip from Miami)

Nassau

Dec. 22



Carnival Vista

Tonnage: 133,500

Length: 1,055'

Passengers: 3,936

YEAR ROUND

ITINERARY

PORTS OF CALL

2017

6-DAY WESTERN CARIBBEAN (round trip from Miami)

Ocho Rios, Grand Cayman, Cozumel

Jan. 8, 22; Feb. 5, 19; Mar. 5, 19; Apr. 2, 16, 30; May 14, 28; Jun. 11, 25;
Jul. 9, 23; Aug. 6, 20; Sep. 3, 17; Oct. 1, 15, 29; Nov. 12; 26; Dec. 10, 24

ITINERARY

PORTS OF CALL

2017

8-DAY EASTERN CARIBBEAN (round trip from Miami)

Turks & Caicos, San Juan, St. Kitts, St. Maarten

Jan. 14; Feb. 25; Apr. 8; Sep. 9; Oct. 7; Nov. 4; Dec. 30

ITINERARY

PORTS OF CALL

2017

8-DAY SOUTHERN CARIBBEAN (round trip from Miami)

Turks & Caicos, La Romana, Curacao or Bonaire, Aruba

Jan. 28; Feb. 11; Mar. 11, 25; Apr. 22; May 6, 20; Jun. 3, 17;
Jul. 1, 15, 29; Aug. 12, 26; Sep. 23; Oct. 21; Nov. 18; Dec. 2, 16





Celebrity Reflection

Tonnage: 126,000 Length: 1,047' Passengers: 3,030

ITINERARY

7-DAY EASTERN CARIBBEAN (round trip from Miami)

PORTS OF CALL

San Juan, St. Maarten, St. Kitts

2017

Jan. 7, 21; Feb. 4, 18; Mar. 4, 18; Apr. 1, 15

ITINERARY

7-DAY WESTERN CARIBBEAN (round trip from Miami)

PORTS OF CALL

Cozumel, Grand Cayman, Falmouth or Ocho Rios, Labadee

2017

Jan. 14, 28; Feb. 11, 25; Mar. 11, 25; Apr. 8

ITINERARY

16-DAY TRANSATLANTIC (from Miami to Civitavecchia)

PORTS OF CALL

Tenerife, Malaga, Cartagena, Barcelona, Villefrance, Livorno

2017

Apr. 22



Celebrity Infinity

Tonnage: 91,000 Length: 965' Passengers: 2,170

ITINERARY

15-DAY PANAMA CANAL (from Miami to San Diego)

PORTS OF CALL

Cartagena, Colon, Panama Canal, Puntarenas, Puerto Quetzal, Puerto Vallarta, Cabo San Lucas, San Diego

2017

Apr. 2

Celebrity Eclipse

Tonnage: 122,000 Length: 1,033' Passengers: 2,850



ITINERARY

PORTS OF CALL

2017

6-DAY WESTERN CARIBBEAN (round trip from Miami)

Grand Cayman, Cozumel, Costa Maya

Jan. 2

ITINERARY

PORTS OF CALL

2017

14-DAY SOUTHERN CARIBBEAN (round trip from Miami)

Aruba, Bonaire, Curacao, Barbados, St. Lucia, St. Kitts, St. Maarten

Jan. 8, 22; Feb. 5, 19; Mar. 5, 19; Apr. 2

ITINERARY

PORTS OF CALL

2017

13-DAY TRANSATLANTIC (from Miami to London)

King's Wharf, Lisbon, Southampton

Apr. 16

ITINERARY

PORTS OF CALL

2017

14-DAY SOUTHERN CARIBBEAN (round trip from Miami)

St. Maarten, Antigua, St. Lucia, Barbados, Bonaire, Curacao, Aruba

Nov. 12, 26

ITINERARY

PORTS OF CALL

2017

11-DAY SOUTHERN CARIBBEAN (round trip from Miami)

St. Maarten, Antigua, St. Lucia, Barbados, St. Kitts

Dec. 10

ITINERARY

PORTS OF CALL

2017

12-DAY SOUTHERN CARIBBEAN (round trip from Miami)

St. Maarten, Antigua, St. Lucia, Barbados, Roseau, St. Kitts

Dec. 21



Celebrity Equinox

Tonnage: 122,000 Length: 1,033' Passengers: 2,850

ITINERARY	11-DAY WESTERN CARIBBEAN (round trip from Miami)
PORTS OF CALL	Freeport, Key West, New Orleans, Cozumel, Costa Maya
2017	Apr. 24
ITINERARY	10-DAY SOUTHERN CARIBBEAN (round trip from Miami)
PORTS OF CALL	Grand Cayman, Aruba, Curacao, Bonaire, Key West
2017	May 5; Sep. 15; Oct. 6, 27; Nov. 6
ITINERARY	11-DAY EASTERN CARIBBEAN (round trip from Miami)
PORTS OF CALL	St. Thomas, Tortola, Antigua, Barbados, St. Lucia, St. Maarten
2017	May 15; Sep. 4, 25; Oct. 16
ITINERARY	9-DAY SOUTHERN CARIBBEAN (round trip from Miami)
PORTS OF CALL	Grand Cayman, Aruba, Curacao, Bonaire
2017	May 26
ITINERARY	7-DAY WESTERN CARIBBEAN (round trip from Miami)
PORTS OF CALL	Key West, Costa Maya, Cozumel, Grand Cayman
2017	Jun. 4, 18; Jul. 2, 16, 30; Aug. 13; Dec. 2, 16, 30

ITINERARY

PORTS OF CALL

2017

7-DAY EASTERN CARIBBEAN (round trip from Miami)

San Juan, St. Thomas or St. Kitts, St. Maarten

Jun. 11, 25; Jul. 9, 23; Aug. 6, 20; Dec. 9, 23

ITINERARY

PORTS OF CALL

2017

8-DAY EASTERN CARIBBEAN (round trip from Miami)

San Juan, St. Maarten, St. Thomas, Punta Cana, Nassau

Aug. 27

ITINERARY

PORTS OF CALL

2017

9-DAY WESTERN CARIBBEAN (round trip from Miami)

Key West, Costa Maya, Cozumel, Belize City, Roatan, Grand Cayman

Nov. 16



Crystal Serenity

Tonnage: 68,870

Length: 820'

Passengers: 1,080

ITINERARY

PORTS OF CALL

2017

7-DAY WESTERN CARIBBEAN (round trip from Miami)

Cozumel, Belize, Costa Maya, Key West

Jan. 3

ITINERARY

PORTS OF CALL

2017

94-DAY SOUTH AMERICA (round trip from Miami)

Cozumel, Costa Maya, Belize, Santo Tomas de Castilla, Roatan, Trujillo, Puerto Limon, Colon, Panama Canal, Manta, Guayaquil, Salaverry, Callao, General San Martin, Matarani, Iquique, Antofagasta, Coquimbo, Santiago, Puerto Montt, Castro, Chilean Fjords, Puerto Chacabuco, Strait of Magellan, Punta Arenas, Ushuaia, Cape Horn, Drake Passage, Antarctic Peninsula, Elephant Island, Drake Passage, Port Stanley, Puerto Madryn, Montevideo, Buenos Aires, Punta del Este, Porto Belo, Sao Paulo, Parati, Ilha Grande, Buzios, Rio de Janeiro, Salvador, Recife, Fortaleza, Macapa, Alter do Chao, Amazon River, Parintins, Manaus, Boca de Valeria, Santarem, Macapa, Devil's Island, Grenada, Barbados, St. Lucia, Fort-de-France, St. Barts, Samana, Turk & Caicos, Key West

Jan. 10

ITINERARY

PORTS OF CALL

2017

18-DAY TRANSATLANTIC (Miami to Los Angeles)

Key West, Cartagena, Panama Canal, Quepos, Puerto Caldera, Acajutla, Cabo San Lucas, San Diego, Los Angeles

Apr. 15

ITINERARY

PORTS OF CALL

2017

7-DAY EASTERN CARIBBEAN (round trip from Miami)

Turks & Caicos, Grand Cayman, Key West

Nov. 20

ITINERARY

PORTS OF CALL

2017

9-DAY EASTERN CARIBBEAN (round trip from Miami)

Tortola, St. Barts, Key West

Nov. 27



BOULEVARD HOTEL

STARLITE HOTEL



Disney Magic

Tonnage: 83,000

Length: 964'

Passengers: 2,700

ITINERARY

PORTS OF CALL

2017

3-DAY BAHAMAS (round trip from Miami)

Castaway Cay

Jan. 5

ITINERARY

PORTS OF CALL

2017

3-DAY BAHAMAS (round trip from Miami)

Nassau, Castaway Cay

Jan. 8

ITINERARY

PORTS OF CALL

2017

4-DAY BAHAMAS (round trip from Miami)

Key West, Nassau, Castaway Cay

Jan. 11; Dec. 6

ITINERARY

PORTS OF CALL

2017

4-DAY BAHAMAS (round trip from Miami)

Castaway Cay, Key West

Jan. 25; Feb. 8, 22

ITINERARY

PORTS OF CALL

2017

4-DAY BAHAMAS (round trip from Miami)

Castaway Cay, Nassau

Mar. 8, 22; Dec. 20

ITINERARY	4-DAY EASTERN CARIBBEAN (from Miami to San Juan)
PORTS OF CALL	Castaway Cay, Nassau, San Juan
2017	Apr. 5

ITINERARY	5-DAY BAHAMAS (round trip from Miami)
PORTS OF CALL	Key West, Nassau, Castaway Cay
2017	Feb. 3, 17; Mar. 3, 17, 31; Dec. 15, 29

ITINERARY	5-DAY EASTERN CARIBBEAN (round trip from Miami)
PORTS OF CALL	Grand Cayman, Castaway Cay
2017	Jan. 15, 29; Feb. 12, 26; Mar. 12, 26

ITINERARY	5-DAY WESTERN CARIBBEAN (round trip from Miami)
PORTS OF CALL	Cozumel, Castaway Cay
2017	Jan. 20; Dec 10, 24



Fathom Adonia

Tonnage: 30,277 Length: 592' Passengers: 710



ITINERARY

PORTS OF CALL

2017

7-DAY DOMINICAN REPUBLIC (round trip from Miami)

Puerto Plata

Jan. 1, 15, 29; Feb. 12, 26; Mar. 12, 26; Apr. 9, 23; May 7, 21

ITINERARY

PORTS OF CALL

2017

7-DAY CUBA (round trip from Miami)

Santiago de Chile, Cienfuegos, Havana

Jan. 8, 22; Feb. 5; Mar. 5, 19; Apr. 2, 16, 30; May 14, 28



MSC Divina

Tonnage: 139,072

Length: 1,094'

Passengers: 3,502

YEAR ROUND

ITINERARY

PORTS OF CALL

2017

8-DAY SOUTHERN CARIBBEAN (round trip from Miami)

Ocho Rios, Aruba, La Romana, Nassau

Jan. 6

ITINERARY

PORTS OF CALL

2017

9-DAY EASTERN CARIBBEAN (round trip from Miami)

San Juan, St. Thomas, St. Maarten, La Romana, Nassau

Jan. 19

ITINERARY

PORTS OF CALL

2017

7-DAY WESTERN CARIBBEAN (round trip from Miami)

Ocho Rios, Grand Cayman, Cozumel, Nassau

Jan. 28; Feb. 11, 25; Mar. 11, 25; Apr. 8, 22; May 6, 20; Jun. 3, 17; Jul. 1, 15, 29; Aug. 12, 26; Sep. 9, 23 Oct. 7, 21; Nov 4, 18; Dec. 2, 16

ITINERARY

PORTS OF CALL

2017

7-DAY EASTERN CARIBBEAN (round trip from Miami)

San Juan, Turk & Caicos, Nassau

Feb. 4; Mar. 4

ITINERARY

PORTS OF CALL

2017

7-DAY EASTERN CARIBBEAN (round trip from Miami)

St. Maarten, San Juan, Nassau

Feb. 18; Mar. 18; Apr. 1, 15, 29; May 13, 27; Jun. 10, 24; Jul. 8, 22; Aug. 5, 19; Sep. 2, 16, 30; Oct. 14, 28; Nov. 11, 25; Dec. 9

ITINERARY

PORTS OF CALL

2017

11-DAY CENTRAL AMERICA (round trip from Miami)

Ocean Cay, Ocho Rios, Cartagena, Cristobal, Puerto Limon, Belize
Dec. 23



MSC Seaside

Tonnage: 160,000

Length: 1,060'

Passengers: 5,179

ITINERARY

PORTS OF CALL

2017

7-DAY EASTERN CARIBBEAN (round trip from Miami)

St. Thomas, Nassau, Ocean Cay
Dec. 23

ITINERARY

PORTS OF CALL

2017

7-DAY WESTERN CARIBBEAN (round trip from Miami)

Ocho Rios, Grand Cayman, Cozumel, Ocean Cay
Dec. 30



Norwegian Escape

Tonnage: 164,600 Length: 1,069' Passengers: 4,248

YEAR ROUND

ITINERARY
PORTS OF CALL
2017

7-DAY EASTERN CARIBBEAN (round trip from Miami)

St. Thomas, Tortola, Nassau

Jan. 7, 14, 21, 28; Feb. 4, 11, 18, 25; Mar. 4, 11, 18, 25; Apr. 1, 8, 15, 22, 29; May 6, 20; Jun. 3, 17; Jul. 1, 15, 29; Aug. 12, 26; Sep. 9, 23; Oct. 7, 21, 28; Nov. 4, 11, 18, 25; Dec. 2, 9, 16, 23, 30

ITINERARY
PORTS OF CALL
2017

7-DAY WESTERN CARIBBEAN (round trip from Miami)

Roatan, Harvest Caye, Costa Maya, Cozumel

May 13, 27; Jun. 10, 24; Jul. 8, 22; Aug. 5, 19; Sep. 2, 16, 30; Oct. 14

Norwegian Getaway

Tonnage: 145,655 Length: 1,068' Passengers: 3,963



ITINERARY

PORTS OF CALL

2017

6-DAY WESTERN CARIBBEAN (round trip from Miami)

Roatan, Harvest Caye, Cozumel

Jan. 2

ITINERARY

PORTS OF CALL

2017

7-DAY WESTERN CARIBBEAN (round trip from Miami)

Roatan, Harvest Caye, Costa Maya, Cozumel

Jan. 8, 15, 22, 29; Feb. 5, 12, 19, 26; Mar. 5, 12, 19, 26; Apr. 2, 9, 16, 23; Oct. 29; Nov. 5, 12, 19, 26; Dec. 3, 10, 17, 24, 31

ITINERARY

PORTS OF CALL

2017

16-DAY TRANSATLANTIC (from Miami to Denmark)

Ponta Delgada, Brest, Southampton, Zeebrugge, Rotterdam, Copenhagen

Apr. 30



Norwegian Jade

Tonnage: 93,558 Length: 965' Passengers: 2,402

ITINERARY
PORTS OF CALL
2017

12-DAY TRANSATLANTIC (from Miami to England)

Ponta Delgada, Cork, Falmouth, Southampton
May 2

ITINERARY
PORTS OF CALL
2017

10-DAY EASTERN CARIBBEAN (round trip from Miami)

San Juan, St. Thomas, Roseau, Barbados, St. Lucia, St. Maarten
Nov. 6, 27; Dec. 18

ITINERARY
PORTS OF CALL
2017

11-DAY PANAMA CANAL (round trip from Miami)

Cartagena, Panama Canal, Colon, Puerto Limon, Roatan, Harvest Caye, Costa Maya
Nov. 16; Dec. 7

ITINERARY
PORTS OF CALL
2017

8-DAY CENTRAL AMERICA (round trip from Miami)

Roatan, Harvest Caye, Santo Tomas de Castilla, Cozumel, Costa Maya
Dec. 28

Norwegian Jewel

Tonnage: 93,502 Length: 965' Passengers: 2,376



ITINERARY

PORTS OF CALL

2017

16-DAY PANAMA CANAL (from Miami to Los Angeles)

Cartagena, Panama Canal, Puntarenas, Corinto, Puerto Quetzal, Huatulco, Puerto Vallarta, Mazatlan, Cabo San Lucas, San Pedro

Jan. 20

ITINERARY

PORTS OF CALL

2017

14-DAY PANAMA CANAL (from Miami to Los Angeles)

Cartagena, Panama Canal, Puntarenas, Corinto, Puerto Quetzal, Acapulco, Puerto Cabo, San Lucas, San Pedro

Feb. 19



Norwegian Pearl

Tonnage: 93,530 Length: 965' Passengers: 2,384

ITINERARY
PORTS OF CALL
2017

4-DAY WESTERN CARIBBEAN (round trip from Miami)

Cozumel
Jan. 25

ITINERARY
PORTS OF CALL
2017

5-DAY EASTERN CARIBBEAN (round trip from Miami)

Ocho Rios, Key West
Jan. 15

ITINERARY
PORTS OF CALL
2017

7-DAY WESTERN CARIBBEAN (round trip from Miami)

Ocho Rios, Grand Cayman, Cozumel, Key West
Mar. 3; Apr. 13

ITINERARY
PORTS OF CALL
2017

10-DAY PANAMA CANAL (round trip from Miami)

Aruba, Cartagena, Panama Canal, Colon, Puerto Limon
Mar. 13; Apr. 3

ITINERARY
PORTS OF CALL
2017

11-DAY CENTRAL AMERICA (round trip from Miami)

Cartagena, Panama Canal, Colon, Puerto Limon, Roatan, Belize City, Costa Maya
Mar. 23

ITINERARY
PORTS OF CALL
2017

17-DAY PACIFIC NORTHWEST (from Miami to Washington)

Cartagena, Puntarenas, Corinto, Puerto Quetzal, Acapulco, Cabo San Lucas, Los Angeles, Seattle
Apr. 20

Norwegian Sky

Tonnage: 77,104 Length: 848' Passengers: 2,004

YEAR ROUND



ITINERARY

PORTS OF CALL

2017

3-DAY BAHAMAS (round trip from Miami)

Nassau, Great Stirrup Cay

Jan. 6, 13, 16; Feb. 3, 10, 17, 24; Mar. 3, 10, 17, 24, 31; Apr. 7, 14, 21, 28; May 5, 12, 19, 26; Jun. 2, 9, 16, 23, 30; Jul. 7, 14, 21, 28; Aug. 4, 11, 18, 25; Sep. 1, 8, 15, 22, 29; Oct. 6, 13, 20, 27; Nov. 3, 10, 17, 24; Dec. 1, 8, 15, 26

ITINERARY

PORTS OF CALL

2017

4-DAY BAHAMAS (round trip from Miami)

Grand Bahama Island, Nassau, Great Stirrup Cay

Jan. 2, 9, 19, 30; Feb. 6, 13, 20, 27; Mar. 6, 13, 20, 27; Apr. 3, 10, 17, 24; Jun. 5, 12, 19, 26; Jul. 3, 10, 17, 24, 31; Aug. 7, 14, 21, 28; Sep. 4, 11, 18, 25; Oct. 2, 9, 16, 23, 30; Nov. 6, 13, 20, 27; Dec. 4, 11, 18, 22, 29

ITINERARY

PORTS OF CALL

2017

4-DAY CUBA (round trip from Miami)

Havana, Great Stirrup Cay

May 1, 8, 15, 22, 29



Norwegian Sun

Tonnage: 78,309 Length: 853' Passengers: 1,936

ITINERARY
PORTS OF CALL
2017

14-DAY PANAMA CANAL (from Miami to Los Angeles)

Cartagena, Panama Canal, Puntarenas, Corinto, Puerto Quetzal, Acapulco, Cabo San Lucas, San Pedro

Oct. 20

ITINERARY
PORTS OF CALL
2017

11-DAY SOUTHERN CARIBBEAN (round trip from Miami)

Aruba, Curacao, Bonaire, St. Maarten, St. Thomas

Nov. 17

ITINERARY
PORTS OF CALL
2017

10-DAY EASTERN CARIBBEAN (round trip from Miami)

St. Thomas, Roseau, Barbados, Martinique, St. Maarten

Nov. 28

ITINERARY
PORTS OF CALL
2017

15-DAY SOUTH AMERICA (from Miami to Chile)

Santa Marta, Cartagena, Panama Canal, Manta, Salaverry, Lima, Arica, Coquimbo, Santiago

Dec. 8

ARS





Oceania Insignia

Tonnage: 30,200 Length: 594' Passengers: 684

ITINERARY
PORTS OF CALL
2017

180-DAY NEW ZEALAND (round trip from Miami)

Grand Cayman, Cartagena, Panama Canal, Golfito, Puntarenas, Corinto, Puerto Quetzal, Acapulco, Cabo San Lucas, San Diego, Hilo, Honolulu, Nawiliwili, Nuku Hiva, Rangiroa, Papeete, Bora Bora, Pago Pago, Suva, Lautoka, Port-Vila, Noumea, Norfolk Island, Auckland, Gisborne, Wellington, Picton, Akaroa, Dunedin, Milford Sound, Eden, Sydney, Brisbane, Cairns, Cooktown, Darwin, Komodo, Benoa, Semarang, Kuching, Muara, Manila, Kao-hsiung, Hong Kong, Hanoi, Ho Chi Minh City, Bangkok, Ko Samui, Singapore, Strait of Malacca, Phuket, Yangon, Cochin, Mangalore, Goa, Bombay, Dubai, Abu Dhabi, Fujairah, Muskat, Salalah, Petra, Luxor, Suez Canal, Haifa, Alanya, Kos, Catania, Gaeta, Rome, Barcelona, Alicante, Gibraltar, Cadiz, Lisbon, Oporto, La Coruna, St. Jean de Luz, Bordeaux, Lorient, Belfast, Dublin, Cork, St. Pierre, Corner Brook, Trois-Rivieres, Montreal, Quebec, Sept-Iles, Halifax, Bar Harbor, New York, St. George's, Charleston

Jan. 6

ITINERARY
PORTS OF CALL
2017

20-DAY NEW ENGLAND (from Miami to Iceland)

Port Canaveral, Norfolk, New York, Boston, Bar Harbor, Saint John, Halifax, St. John's, Nuuk, Paamiut, Qaqortoq, Isafjordur, Reykjavik

Jul. 6

ITINERARY
PORTS OF CALL
2017

10-DAY EASTERN CARIBBEAN (from Miami to San Juan)

St. Thomas, Antigua, Barbados, St. Vincent, Grenada, Fort-de-France, St. Kitts, San Juan

Nov. 14

Oceania Riviera

Tonnage: 66,084 Length: 785' Passengers: 1,250



ITINERARY

PORTS OF CALL

2017

10-DAY EASTERN CARIBBEAN (round trip from Miami)

Tortola, Antigua, Barbados, St. Lucia, St. Barts

Jan. 3, 23; Feb. 2; Mar. 6

ITINERARY

PORTS OF CALL

2017

10-DAY EASTERN CARIBBEAN (round trip from Miami)

Turks & Caicos, San Juan, St. Barts, Antigua, Tortola, Punta Cana, Nassau

Jan. 13; Feb. 24; Mar. 16

ITINERARY

PORTS OF CALL

2017

12-DAY SOUTHERN CARIBBEAN (round trip from Miami)

San Juan, Antigua, Martinique, Grenada, Barbados, St. Lucia, St. Barts

Feb. 12

ITINERARY

PORTS OF CALL

2017

14-DAY TRANSATLANTIC (from Miami to Spain)

Bermuda, Ponta Delgada, Tangier, Palma de Mallorca, Barcelona

Mar. 26

ITINERARY

PORTS OF CALL

2017

10-DAY EASTERN CARIBBEAN (round trip from Miami)

Nassau, San Juan, St. Maarten, Antigua, St. Lucia, St. Barts

Dec. 2

ITINERARY

PORTS OF CALL

2017

10-DAY CENTRAL AMERICA (round trip from Miami)

Grand Cayman, Cozumel, Roatan, Santo Tomas de Castilla, Belize City, Costa Maya, Key West

Dec. 12

ITINERARY

PORTS OF CALL

2017

12-DAY SOUTHERN CARIBBEAN (round trip from Miami)

Great Stirrup Cay, St. Barts, Martinique, Barbados, Grenada, St. Lucia, Antigua

Dec. 22



Oceania Regatta

Tonnage: 30,277

Length: 594'

Passengers: 684

ITINERARY

PORTS OF CALL

2017

23-DAY SOUTH AMERICA (from Miami to Rio de Janeiro)

San Juan, Antigua, Barbados, Devil's Island, Amazon River, Bentarem, Parintins, Manaus, Boca da Valeria, Alter do Chao, Fortaleza, Recife, Rio de Janeiro

Feb. 2

ITINERARY

PORTS OF CALL

2017

10-DAY BERMUDA (round trip from Miami)

Port Canaveral, Charleston, Hamilton, St. George's, Nassau

Apr. 14

ITINERARY

PORTS OF CALL

2017

27-DAY PANAMA CANAL (from Miami to Vancouver)

Key West, Cartagena, Panama Canal, Puntarenas, San Juan del Sur, Puerto Quetzal, Acapulco, Cabo San Lucas, San Francisco, Astoria, Ketchikan, Juneau, Hubbard Glacier, Icy Strait Point, Sitka, Prince Rupert, Inside Passage, Vancouver

Apr. 24

ITINERARY

PORTS OF CALL

2017

9-DAY WESTERN CARIBBEAN (round trip from Miami)

Costa Maya, Harvest Caye, Santo Tomas de Castilla, Roatan, Cozumel, Key West

Oct. 8

ITINERARY

PORTS OF CALL

2017

33-DAY TAHITI ISLANDS (from Miami to Papeete)

Cartagena, Panama Canal, Golfito, Puntarenas, Corinto, Puerto Quetzal, Acapulco, Cabo San Lucas, San Diego, Honolulu, Nawiliwili, Kahului, Nuku Hiva, Fakarava, Bora Bora, Moorea, Papeete

Oct. 17

Oceania Sirena

Tonnage: 30,277 Length: 594' Passengers: 684



ITINERARY

PORTS OF CALL

2017

16-DAY TRANSATLANTIC (from Miami to Italy)

St. George's, Funchal, Malaga, Cartagena, Barcelona, Marseille, St. Tropez, Civitavecchia

Jun. 21

ITINERARY

PORTS OF CALL

2017

34-DAY SOUTH AMERICA (from Miami to Argentina)

San Juan, Antigua, Barbados, Devil's Island, Santarem, Parintins, Manaus, Boca da Valeria, Alter do Chao, Fortaleza, Recife, Rio de Janeiro, Buzios, Ilha Grande, Parati, Sao Paulo, Porto Belo, Rio Grande, Punta del Este, Montevideo, Buenos Aires

Oct. 8



Oceania Marina

Tonnage: 65,000

Length: 774'

Passengers: 1,258

ITINERARY

10-DAY WESTERN CARIBBEAN (round trip from Miami)

PORTS OF CALL

Grand Cayman, Cozumel, Costa Maya, Roatan, Santo Tomas de Castilla, Harvest Caye, Key West

2017

Jan. 22; Feb. 8, 25; Mar. 21, 31

ITINERARY

7-DAY WESTERN CARIBBEAN (round trip from Miami)

PORTS OF CALL

Key West, Costa Maya, Harvest Caye, Roatan

2017

Feb. 1, 18

ITINERARY

14-DAY WESTERN CARIBBEAN (round trip from Miami)

PORTS OF CALL

Key West, Cozumel, Costa Maya, Harvest Caye, Santo Tomas de Castilla, Roatan, Puerto Limon, Colon, Cartagena, Grand Cayman

2017

Mar. 7

ITINERARY

21-DAY TRANSATLANTIC (from Miami to Portugal)

PORTS OF CALL

San Juan, St. Barts, Antigua, Barbados, Porto Grande, Dakar, Arrecife, Tenerife, La Palma, Funchal, Lisbon

2017

Apr. 10

ITINERARY

PORTS OF CALL

2017

12-DAY WESTERN CARIBBEAN (round trip from Miami)

Costa Maya, Santo Tomas de Castilla, Roatan, Puerto Limon, Colon, Harvest Caye, Key West

Dec. 17

ITINERARY

PORTS OF CALL

2017

18-DAY SOUTH AMERICA (from Miami to Peru)

Cozumel, Costa Maya, Harvest Caye, Santo Tomas de Castilla, Roatan, Puerto Limon, Panama Canal, Fuerte Amador, Manta, Guayaquil, Salaverry, Lima

Dec. 29



Seven Seas Explorer

Tonnage: 54,000 Length: 735' Passengers: 750

ITINERARY
PORTS OF CALL
2017

10-DAY EASTERN CARIBBEAN (round trip from Miami)

St. Maarten, St. Lucia, Antigua, St. Barts, San Juan, Nassau
Feb. 4

ITINERARY
PORTS OF CALL
2017

10-DAY CENTRAL AMERICA (round trip from Miami)

Key West, Cozumel, Costa Maya, Santo Tomas de Castilla, Harvest Caye, Roatan, Grand Cayman
Feb. 14; Mar. 6

ITINERARY
PORTS OF CALL
2017

10-DAY EASTERN CARIBBEAN (round trip from Miami)

Tortola, Antigua, Barbados, St. Lucia, St. Barts
Feb. 24; Mar. 16

ITINERARY
PORTS OF CALL
2017

12-DAY EASTERN CARIBBEAN (round trip from Miami)

San Juan, Antigua, Fort-de-France, Grenada, Barbados, St. Lucia, St. Barts
Dec. 8

ITINERARY
PORTS OF CALL
2017

14-DAY SOUTHERN CARIBBEAN (round trip from Miami)

Curacao, Bonaire, Grenada, St. Vincent, St. Lucia, Roseau, St. Kitts, St. Maarten
Dec. 20

Seven Seas Navigator

Tonnage: 28,550 Length: 560' Passengers: 490



ITINERARY

PORTS OF CALL

2017

106-DAY SINGAPORE (from Miami to Turkey)

Grand Cayman, Cartagena, Panama Canal, Golfito, Puntarenas, Corinto, Puerto Quetzal, Acapulco, Cabo San Lucas, San Diego, Honolulu, Lahaina, Nawiliwili, Hilo, Nuku Hiva, Rangiroa, Papeete, Bora Bora, Pago Pago, Suva, Lautoka, Bay of Islands, Auckland, Rotorua, Napier, Wellington, Akaroa, Dunedin, Milford Sound, Sydney, Brisbane, Cairns, Cooktown, Darwin, Komodo, Benoa, Singapore, Strait of Malacca, Phuket, Yangon, Cochin, Mangalore, Goa, Bombay, Dubai, Abu Dhabi, Salalah, Petra, Luxor, Sharm-El-Sheikh, Haifa, Limassol, Rhodes, The Dardanelles, Istanbul

Jan. 5

ITINERARY

PORTS OF CALL

2017

10-DAY BERMUDA (round trip from Miami)

Nassau, St. George's, Charleston, Jacksonville, Port Canaveral

May 13

ITINERARY

PORTS OF CALL

2017

33-DAY CANADA (from Miami to San Francisco)

Grand Cayman, Santa Marta, Cartagena, Panama Canal, Puntarenas, San Juan del Sur, Puerto Quetzal, Acapulco, Cabo San Lucas, San Diego, San Francisco, Astoria, Victoria, Vancouver, Ketchikan, Juneau, Skagway, Hubbard Glacier, Sitka, Victoria, Astoria, San Francisco

Jun. 17

ITINERARY

PORTS OF CALL

2017

11-DAY CANADA (round trip from Miami)

Port Canaveral, Norfolk, New York, Halifax, Sept-Iles, Quebec, Montreal

Aug. 7



Seven Seas Mariner

Tonnage: 48,075 Length: 709' Passengers: 700

ITINERARY
PORTS OF CALL
2017

7-DAY CENTRAL AMERICA (round trip from Miami)

Costa Maya, Harvest Caye, Roatan, Key West

Jan. 4; Dec. 22, 29

ITINERARY
PORTS OF CALL
2017

71-DAY SOUTH AMERICA (round trip from Miami)

St. Barts, Fort-de-France, Grenada, Bonaire, Aruba, Santa Marta, Cartagena, Panama Canal, Manta, Guayaquil, Salaverry, Lima, Pisco, Iquique, Coquimbo, Santiago, Puerto Montt, Puerto Chacabuco, Chilean Fjords, Punta Arenas, Ushuaia, Port Stanley, Punta del Este, Montevideo, Buenos Aires, Rio Grande, Porto Belo, Sao Paulo, Ilha Grande, Parati, Buzios, Rio de Janeiro, Recife, Alter do Chao, Boca de Valeria, Manaus, Parintins, Santarem, Devil's Island, Barbados, St. Lucia, San Juan

Jan. 17

ITINERARY
PORTS OF CALL
2017

10-DAY EASTERN CARIBBEAN (round trip from Miami)

Tortola, Antigua, St. Lucia, St. Barts, San Juan, Nassau

Mar. 29

ITINERARY
PORTS OF CALL
2017

29-DAY PANAMA CANAL (from Miami to Vancouver)

Cartagena, Colon, Panama Canal, Puntarenas, San Juan del Sur, Puerto Quetzal, Acapulco, Mazatlan, Cabo San Lucas, San Diego, San Francisco, Astoria, Sitka, Hubbard Glacier, Juneau, Wrangell, Ketchikan, Inside Passage, Victoria, Vancouver

Apr. 25

ITINERARY

PORTS OF CALL

2017

7-DAY CENTRAL AMERICA (round trip from Miami)

Cozumel, Belize City, Roatan, Key West

Nov. 10

ITINERARY

PORTS OF CALL

2017

25-DAY SOUTH AMERICA (round trip from Miami)

St. Barts, St. Lucia, Grenada, Trinidad, Santarem, Boca da Valeria, Manaus, Parintins, Alter do Chao, Devil's Island, Barbados, Antigua, San Juan

Nov. 17

ITINERARY

PORTS OF CALL

2017

10-DAY CENTRAL AMERICA (round trip from Miami)

Cozumel, Costa Maya, Santo Tomas de Castilla, Roatan, Harvest Cay, Grand Cayman

Dec. 12



Empress of the Seas

Tonnage: 48,563 Length: 689' Passengers: 1,840

ITINERARY
PORTS OF CALL
2017

3-DAY BAHAMAS (round trip from Miami)

Nassau, Cococay
Jan. 3

ITINERARY
PORTS OF CALL
2017

4-DAY BAHAMAS (round trip from Miami)

Nassau, CocoCay
Jan. 3; Apr. 10

ITINERARY
PORTS OF CALL
2017

4-DAY BAHAMAS (round trip from Miami)

Key West, Nassau
Jan. 12, 26, 30; Feb. 6, 23; Mar. 9; Apr. 6

ITINERARY
PORTS OF CALL
2017

4-DAY BAHAMAS (round trip from Miami)

Grand Bahama, Nassau, CocoCay
Mar. 23

ITINERARY
PORTS OF CALL
2017

5-DAY WESTERN CARIBBEAN (round trip from Miami)

Cozumel, Costa Maya
Jan. 7

ITINERARY
PORTS OF CALL
2017

5-DAY BAHAMAS (round trip from Miami)

Nassau, CocoCay, Key West
Jan. 16, 21; Feb. 27

ITINERARY
PORTS OF CALL
2017

5-DAY WESTERN CARIBBEAN (round trip from Miami)

Cozumel, Key West or CocoCay
Mar. 4, 18, 27; Apr. 1, 19, 24

ITINERARY
PORTS OF CALL
2017

5-DAY EASTERN CARIBBEAN (round trip from Miami)

Labadee or Grand Cayman, Key West
Mar. 13; Apr. 14

ITINERARY
PORTS OF CALL
2017

6-DAY WESTERN CARIBBEAN (round trip from Miami)

Cozumel, Belize, Costa Maya
Feb. 17

ITINERARY
PORTS OF CALL
2017

7-DAY WESTERN CARIBBEAN (round trip from Miami)

Key West, Cozumel, Belize, Costa Maya
Feb. 10



Enchantment of the Seas

Tonnage: 81,000 Length: 990' Passengers: 2,446

YEAR ROUND

ITINERARY

PORTS OF CALL

2017

3-DAY BAHAMAS (round trip from Miami)

Coco Cay, Nassau

Jan. 6, 13, 20, 27; Feb. 3, 10, 17, 24; Mar. 3, 17, 24, 31; Apr. 7, 14, 21, 28;
 May 5, 12, 19, 26; Jun. 2, 9, 16, 23, 30; Jul. 7, 14, 21, 28; Aug. 4, 11, 18, 25;
 Sep. 1, 8, 15, 22, 29; Oct. 6, 13, 20, 27; Nov. 3, 10, 17, 24; Dec. 26

ITINERARY

PORTS OF CALL

2017

4-DAY BAHAMAS (round trip from Miami)

Key West, Coco Cay, Nassau

Jan. 2, 9, 16, 23, 30; Feb. 6, 20, 27; Mar. 6, 20, 27; Apr. 3, 10, 17, 24;
 May 1, 8, 15, 22, 29; Jun. 5, 12, 19, 26; Jul. 3, 10, 17, 24, 31; Aug. 7, 14, 21, 28;
 Sep. 4, 11, 18, 25; Oct. 2, 9, 16, 23, 30; Nov. 6, 13, 20; Dec. 14, 18, 22, 29

Navigator of the Seas

Tonnage: 138,00 Length: 1,020' Passengers: 3,835



ITINERARY

PORTS OF CALL

2017

3-DAY BAHAMAS (round trip from Miami)

Nassau, Cococay

Jan. 3

ITINERARY

PORTS OF CALL

2017

9-DAY SOUTHERN CARIBBEAN (round trip from Miami)

Labadee, Curacao, Bonaire, Aruba

Jan. 6, 20; Feb. 3, 17; Mar. 3, 17, 31; Apr. 14; Nov 24; Dec. 8, 22

ITINERARY

PORTS OF CALL

2017

5-DAY WESTERN CARIBBEAN (round trip from Miami)

Costa Maya or Nassau, Cozumel

Jan. 15, 29; Feb. 12; Nov. 19; Dec. 3, 17, 31

ITINERARY

PORTS OF CALL

2017

14-DAY TRANSATLANTIC (from Miami to Southampton)

Ponta Delgada, Lisbon, Vigo, La Coruna, Le Havre, Southampton

Apr. 28



Viking Sky

Tonnage: 48,000

Length: 745'

Passengers: 930

ITINERARY

7-DAY WESTERN CARIBBEAN (round trip from Miami)

PORTS OF CALL

Key West, Belize, Cozumel, Merida

2017

Nov. 5; Dec. 10, 17

ITINERARY

14-DAY PANAMA CANAL (round trip from Miami)

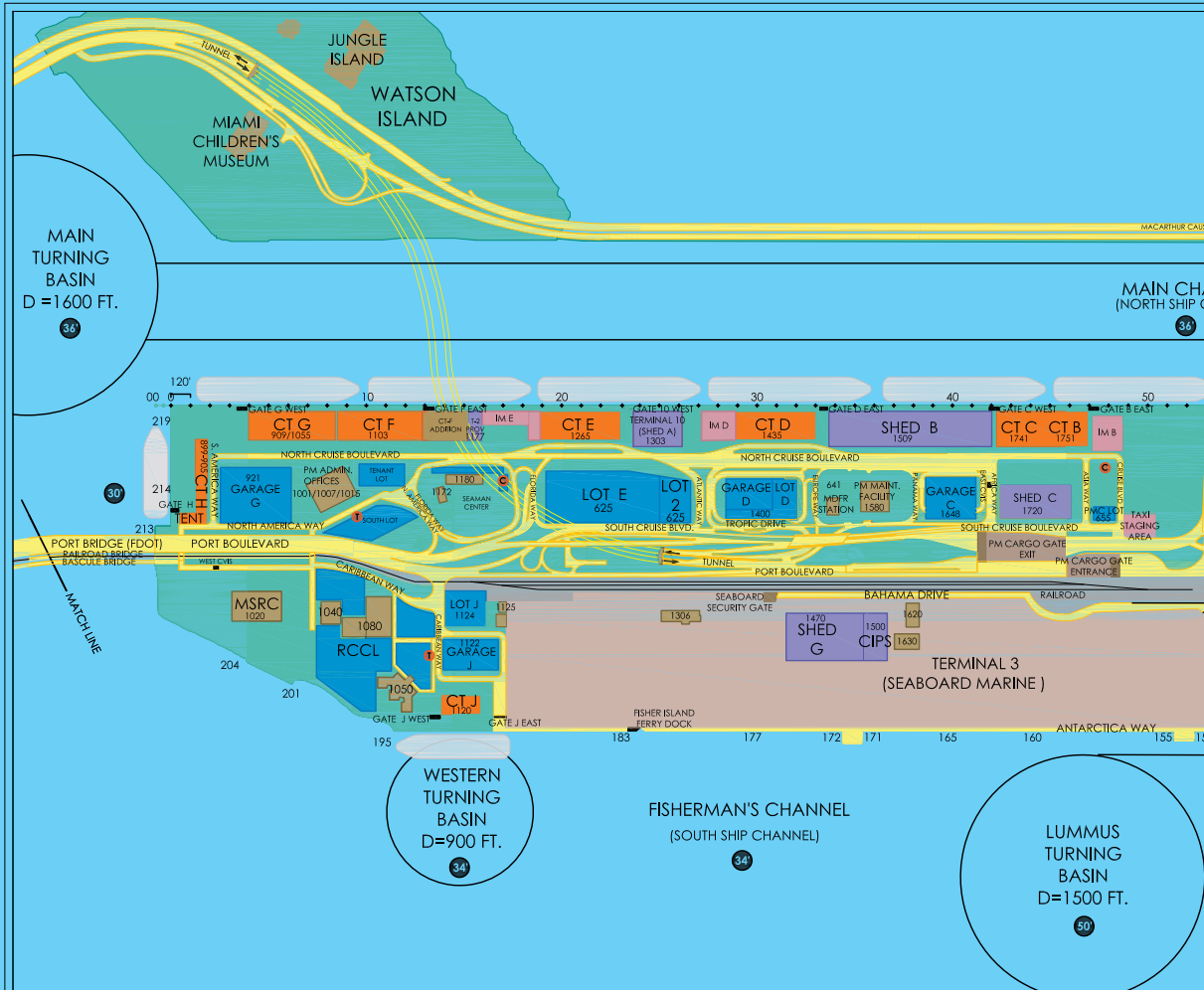
PORTS OF CALL

Key West, Belize, Roatan, Puerto Limon, Colon, Panama Canal, Cartagena, Montego Bay, Grand Cayman

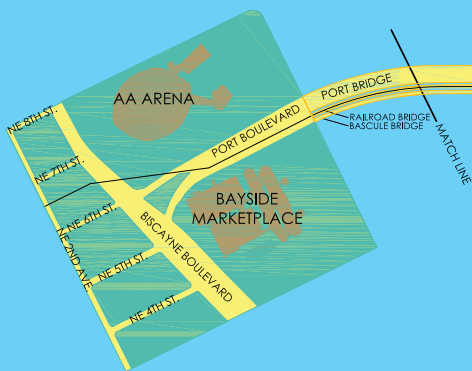
2017

Nov. 12, 26; Dec. 24





PORT ENTRANCE - BISCAYNE BLVD.



PORTMIAMI MAP

REVISED 01/2017

DRAWING NOT TO SCALE

LEGEND

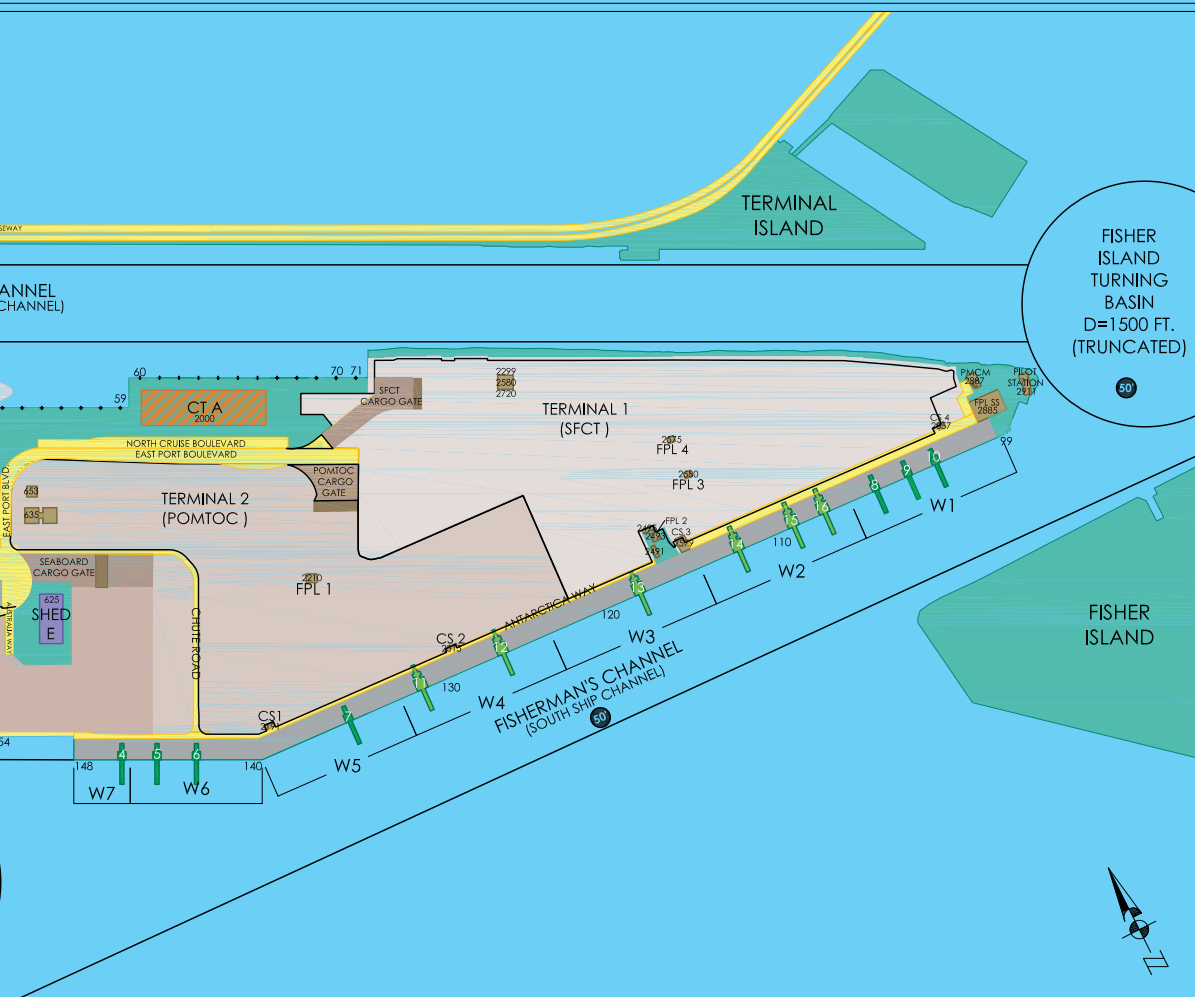
- PARKING
- CRUISE TERMINALS
- INTERMODAL LOTS
- SHEDS
- ACCESSORY BLDGS.
- ROADS
- RAILROAD
- TUNNEL
- POST-PANAMAX CRANE NUMBER
- SUPER POST-PANAMAX CRANE NUMBER
- EXISTING CHANNELS/TURNING BASINS
- C CELL PHONE LOT
- T TROLLEY STOP
- 50 WATER DEPTH
- 00 BAY NUMBER
- W0 WHARF NUMBER

Cruise Terminals

- Cruise Terminal A (unbuilt)
- Cruise Terminal B
- Cruise Terminal C
- Cruise Terminal D
- Cruise Terminal E
- Cruise Terminal F
- Cruise Terminal G
- Cruise Terminal H (Bimini Tent)
- Cruise Terminal J

Parking

- Garage C
- Garage D
- Garage G
- Garage J
- Lot 2 (Oversize Vehicles)
- Lot J
- Lot E
- PMC Lot
- South Lot (Port Admin.)
- Tenant Lot



ADDRESSES

2000 N. Cruise Blvd.
1751 N. Cruise Blvd.
1741 N. Cruise Blvd.
1435 N. Cruise Blvd.
1265 N. Cruise Blvd.
1103 N. Cruise Blvd.
/1055 N. Cruise Blvd.
897 S. America Way
120 Caribbean Way

1648 N. Cruise Blvd.
1400 N. Cruise Blvd.
921 S. America Way
122 Caribbean Way
625 Florida Way
124 Caribbean Way
625 Florida Way
655 Asia Way
002 N. America Way
1017 Florida Way

Utilities

Comfort Station CS1	2191 Antarctica Way
Comfort Station CS2	2315 Antarctica Way
Comfort Station CS3	2579 Antarctica Way
Comfort Station CS4	2857 Antarctica Way
FPL Vault 1	2210 Port Boulevard
FPL Vault 2	2493 Antarctica Way
FPL Vault 3	2580 Port Boulevard
FPL Vault 4	2575 Port Boulevard
FPL Substation	2885 Antarctica Way

Sheds/Provisioning

Shed B	1509 N. Cruise Blvd.
Shed C	1720 Africa Way
Shed E	514 Australia Way
Shed G	1470 / 1500 Bahama Dr.
Terminal 2 (Provisioning)	1177 N. Cruise Blvd.
Terminal 10 (Shed A)	1303 N. Cruise Blvd.

Tenants and Administration

Biscayne Bay Pilots	2911 Port Blvd.
Customs Insp. Processing Svcs. (CIPS)	1500 Port Blvd.

Tenants and Administration (cont.)

Marine Spill Response Corp. (MSRC)	1020 Caribbean Way
Miami-Dade Fire Rescue Station No. 39	641 Europe Way
PM Admin. Buildings	1001/1007/1015 N. America Way
PM Dumpster Facility	1125 Caribbean Way
PM Maintenance Facility	1580 N. Cruise Blvd.
PM Trailers (Park & Recreation, MDPD)	900 Port Blvd.
PM Trailer	920 N. America Way
POMTOC Computer Trailer	653 Australia Way
POMTOC Office Trailer	635 Australia Way
Port Crane Management (PMCM)	2887 Port Blvd.
Royal Carib. Cruises (RCCL)	1040/1050/1080 Caribbean Way
Seaboard Field Office	1306 Port Blvd.
Seaboard Maintenance	1620 Bahama Dr.
Seaboard Office	1630 Bahama Dr.
Seaman Center	1180 Florida Way
SFCT Office Trailers	2299/2580/2720 East Port Blvd.
SFCT Office Trailers	2491/2495 Antarctica Way
Stella Maris Center Trailer	1172 Florida Way
Terminal H (USCG)	899 S. America Way
Terminal H (CBP, MDPD, PM Security)	903 S. America Way

Miami-Dade County Seaport Department
1015 N. America Way, 2nd Floor
Miami, FL 33132
T: 305-347-4800 | F: 305-329-4029



www.portmiami.biz |

