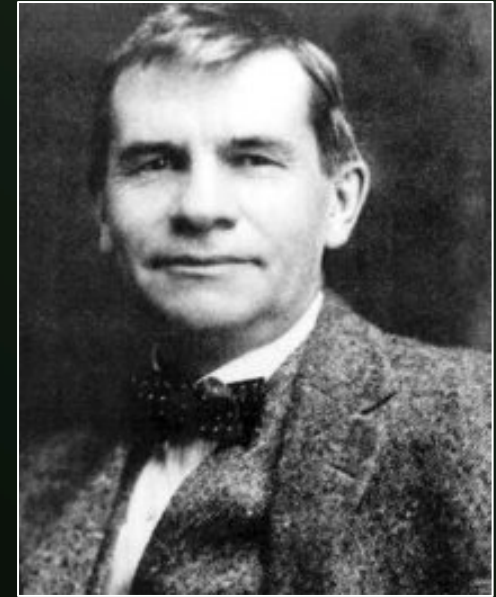


Gustav Stickley

Visited Morris' workshop in 1898

- Converted his workshop to a guild
- Published a magazine called
- *The Craftsman* (beginning in 1901)
- So his style is called “Craftsman”
 - furniture, homes



1857 - 1942



The Stickley Craftsman Farm -

Craftsman Farm was intended to be self-sufficient, with gardens for vegetables and flowers, orchards, dairy cows and chickens. It was designed as a gathering place for workers, students and guests. The large living and dining rooms were heated by copper-hooded fireplaces. Stickley originally planned a separate house for his family but later adapted the upstairs for himself, his wife, and their 6 children.

The Craftsman Bungalow

Many of Stickley's home designs were promoted as "Craftsman Bungalows"



CRAFTSMAN BUNGALOWS 59 Homes from "The Craftsman"

Edited by Gustav Stickley

with 193 Illustrations



“Bungalow”



- The word comes from India –
 - *bangala or bangla*
 - British colonists used the term for their summer houses

The “Craftsman” Bungalow is an American housing style with roots in India. Native houses in Bengal, India were called *bangla* or *bangala*. British colonists adapted these one-story thatch-roofed huts as summer homes. They arranged dining rooms, bedrooms, kitchens, and bathrooms around central living rooms - a floor plan that became the prototype for America's Craftsman Bungalows.

<http://architecture.about.com/library/bl-bungalow.htm>

A bungalow in India



Ashley Bungalow
Copyright Home Stayz

- Adopted in US
– 1905 - 1930



The “Craftsman Bungalow”

Made popular by Stickley

Features:

1. 1 or 1 ½ stories
2. Low pitched roof
3. Wide eaves
4. Exposed rafters
5. Porch
6. Central living area

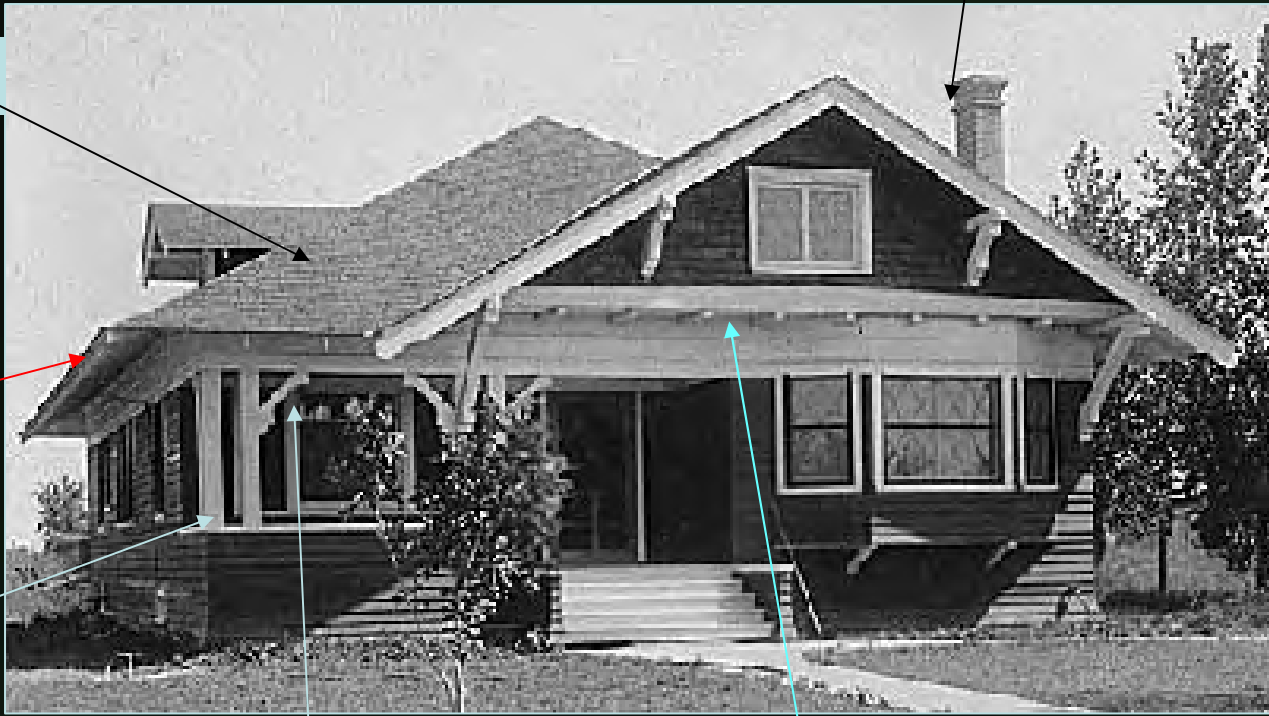
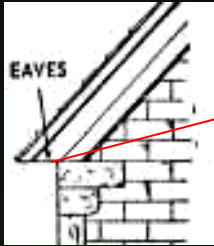


1 or 1 1/2 stories

Low-pitched roof

Low-pitched roof

Wide eaves



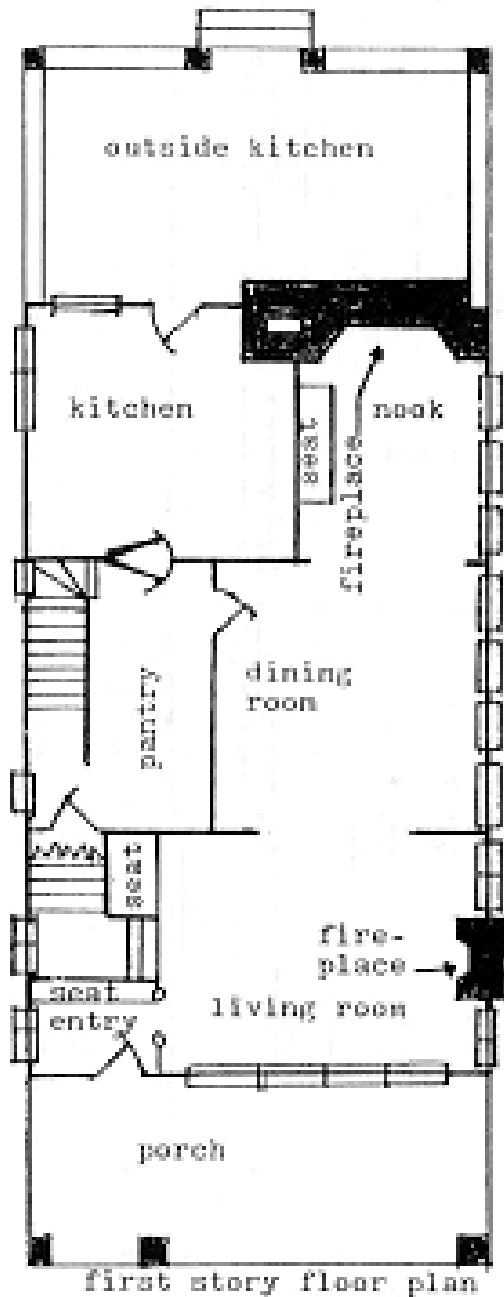
Porch with square columns

Decorative braces

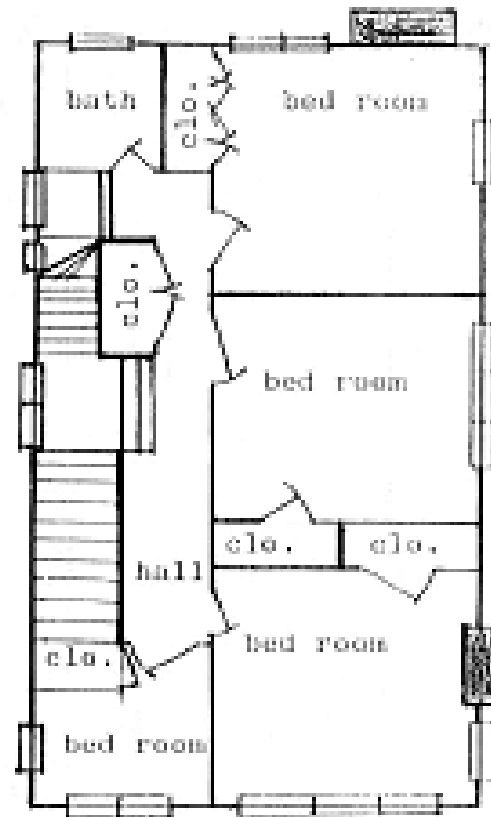
Exposed roof rafters

Typical Bungalow

Bungalow Floor Plan



first story floor plan



second story floor plan

Prescott, AZ

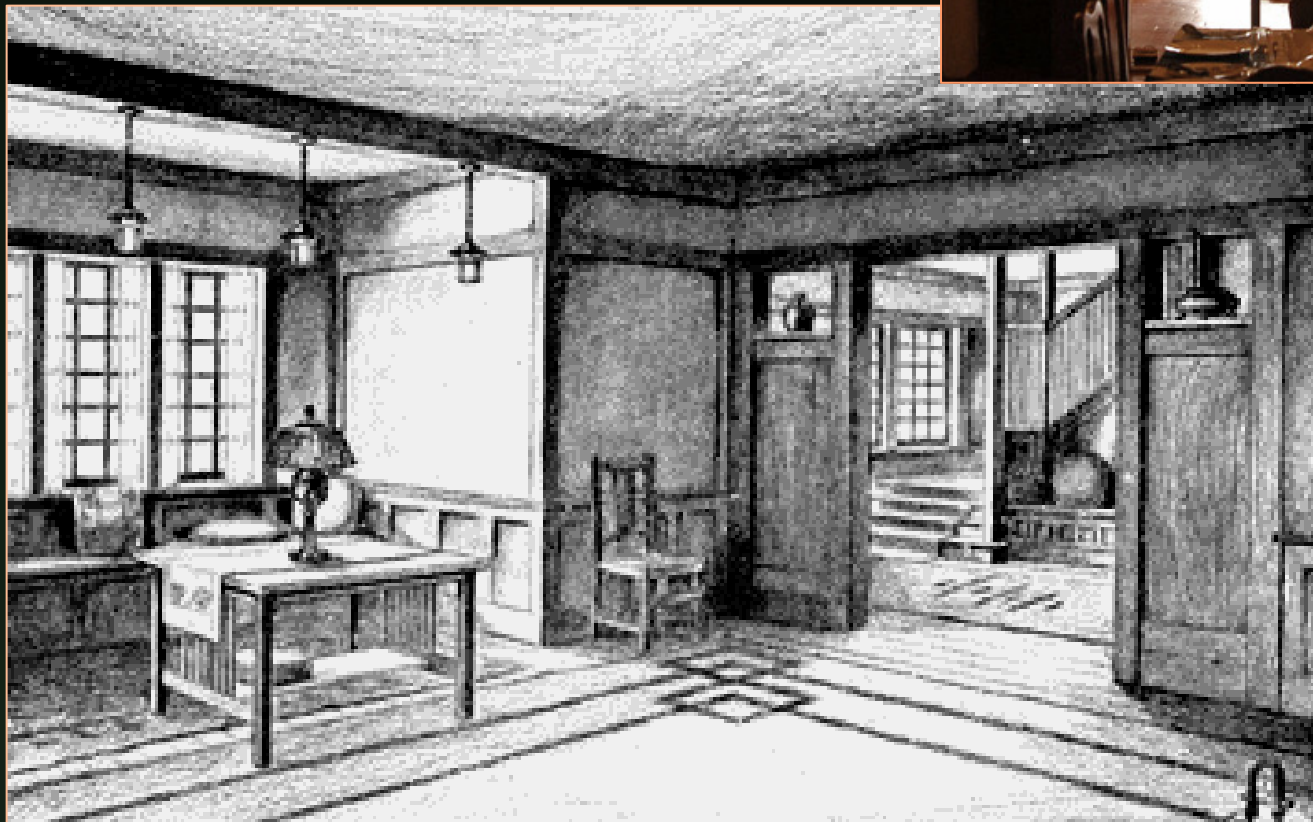




The Craftsman Bungalow

- 1905 -1930
- Minimal decoration
- Porches, gardens
- Harmony with landscape
- Polished wood

- Efficient use of space
- Built-in seating & lighting
- Open floor plan
- Bands of wood trim
- Paneling



India Bungalow

Stickley Bungalow

Luxury Homes

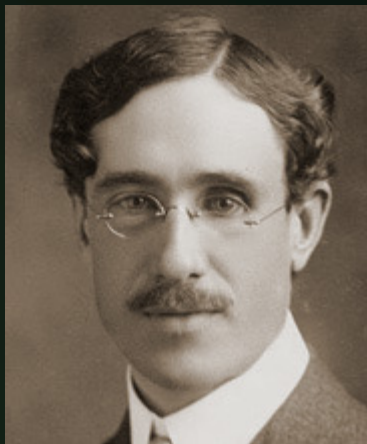
Architects Greene & Greene

“Gamble House”

- Pasadena, California
- Japanese influence
- Sensitive to nature



Henry Mather Greene



Charles Sumner Greene



Luxury Homes



©2005 Matt Jalbert • exuberance.com

Gamble House



[/www.gamblehouse.org/photos/int/index.html](http://www.gamblehouse.org/photos/int/index.html)
http://leblog.exuberance.com/city_los_angeles/

Interiors

Window seat or
fireplace inglenook



Stained Glass



Built-in Units – Custom Furniture and Lighting



© Tim Street-Porter / The Gamble House



© Tim Street-Porter / The Gamble House

Greene & Greene Interior Design

“Mission Style”

- **Stickley also had a moral mission**
 - To reform American taste
 - He believed that individuals were shaped by their home surroundings
- **So his style also has a 2nd name – “Mission Style”**
 - Simple form & materials
 - **Utility of design**
 - Exposed construction
 - **Good craftsmanship**





The original "Morris" chair

Morris Inspiration



The Stickley version of the
"Morris" chair

Stickley Furniture





Arts & Crafts Lamps



<http://cgi.ebay.com/>



Mica Shade, Copper Base

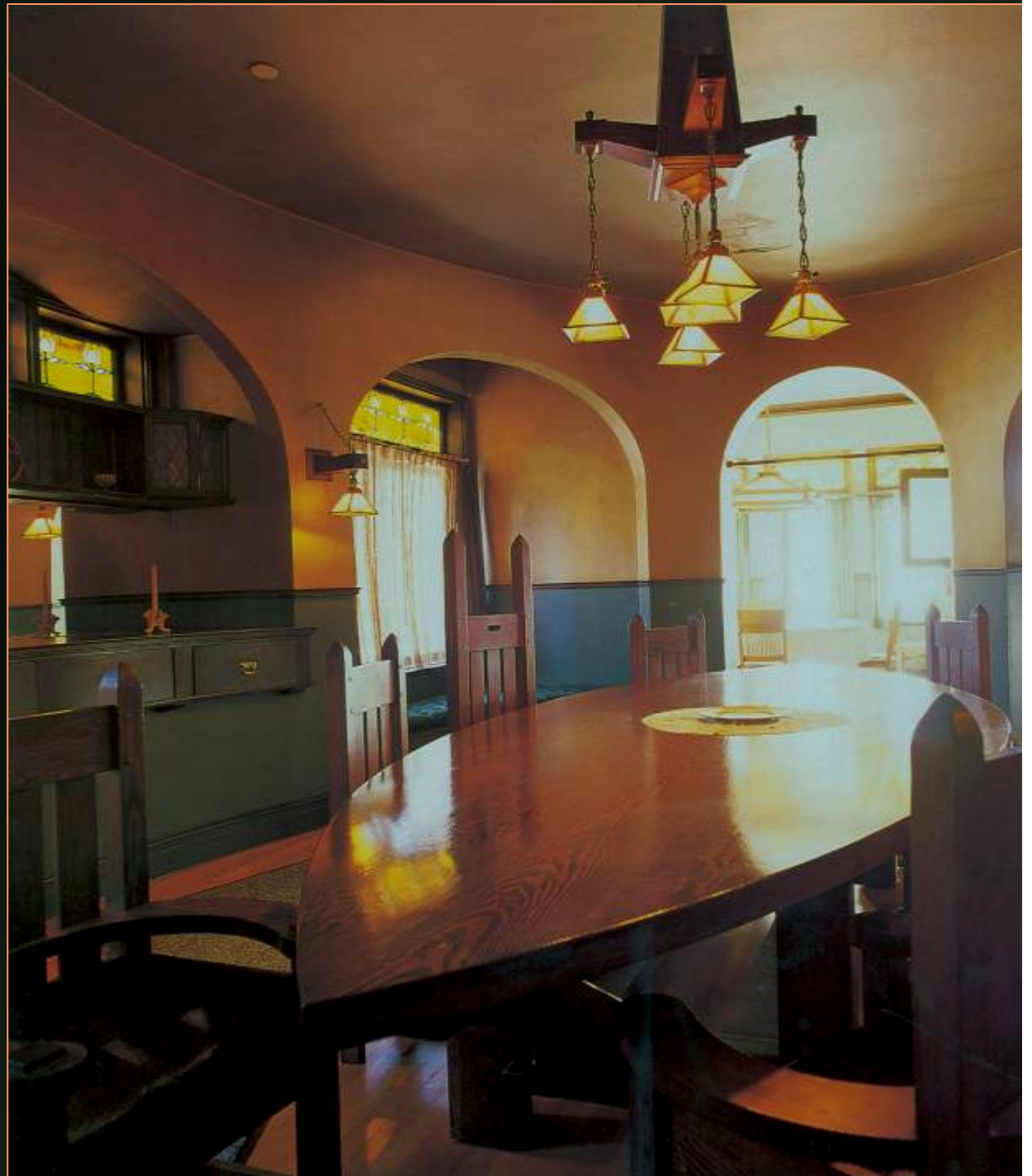
- Flagstaff, AZ
- Rustic exterior
- Craftsman interior



Riordan
House

Riordan House

- Custom carpentry



Harvey Ellis

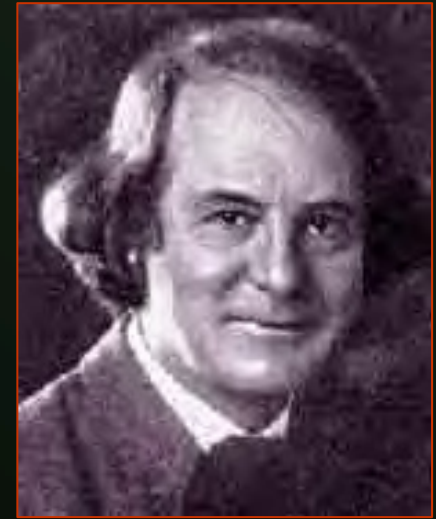


- Inlay – metals
 - Brass, pewter



Roycroft

- Another craft community
 - East Aurora, New York
 - Founded by Elbert Hubbard
 - Millionaire soap manufacturer
 - Said: “I believe I'm a genius.”



1856 – 1915

- Inspired by Morris
 - Made furniture
 - Also had the Roycroft Press:
 - Published “The Philistine” and “The Fra”

Roycroft



www.sacbungalow.org/whabunga.htm

Roycroft Guild

- Skilled artisans –
- Name: “king” + “craftsmen”
 - Lectures, concerts, farming
 - Lived close to nature
 - Made furniture
 - Object of copper & leather
- Made Arts and Crafts known
 - Hubbard died on *Lusitania*
 - Guild bankrupt went 1938

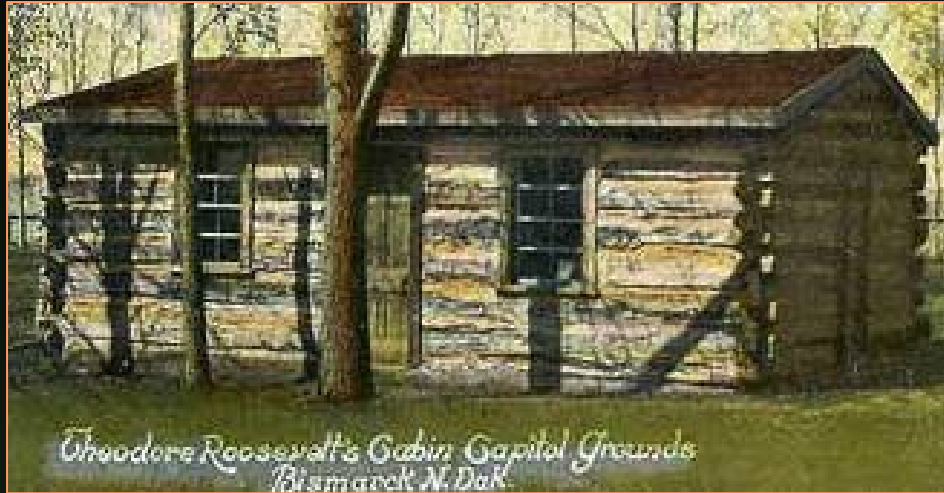


Sold for \$35,000

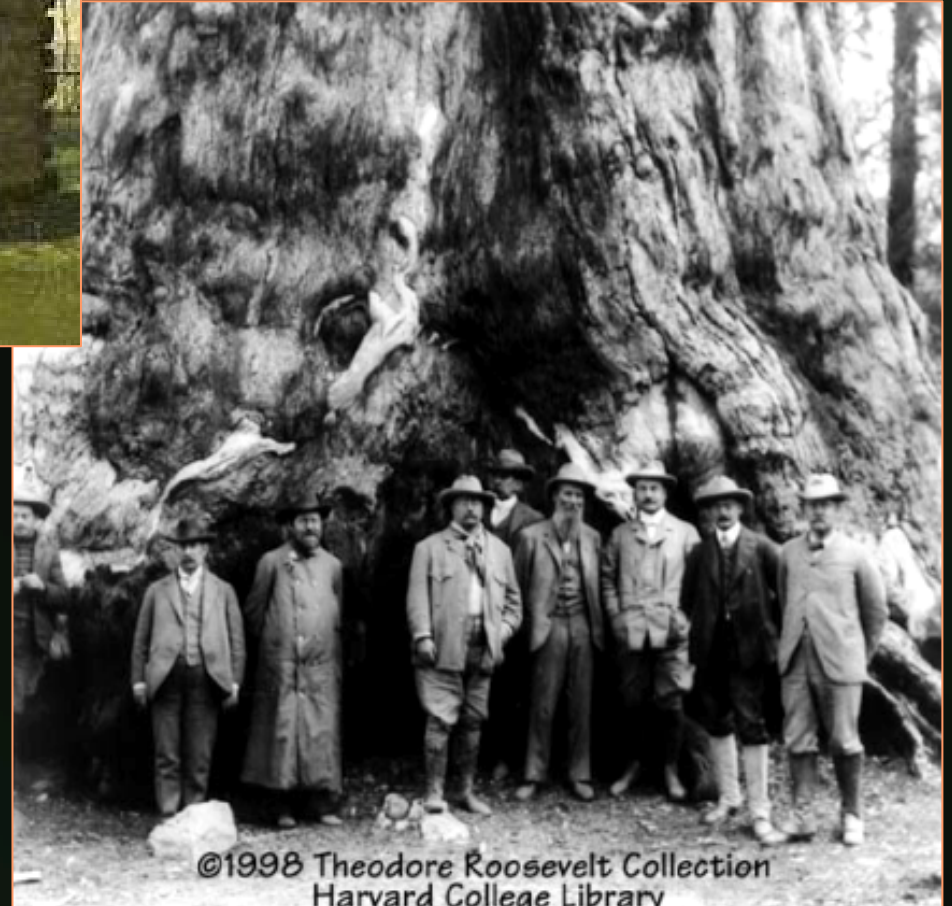
Roycroft Lamp

- The 19th century quest for a return to nature resulted in public and national parks as well as styles of rustic architecture and furnishings....

US Conservation



Roosevelt On Safari



**Roosevelt & John Muir at
Yosemite in 1903**

“Shingle Style”

Late 19th c.



"Kraggsyde," Manchester-by-the-Sea, MA by
Peabody and Stearns, c.1882

Adirondack Style

- Naturalistic

Rustic, stone fireplaces

decorated with bark, branches



– Began with William
West Durant

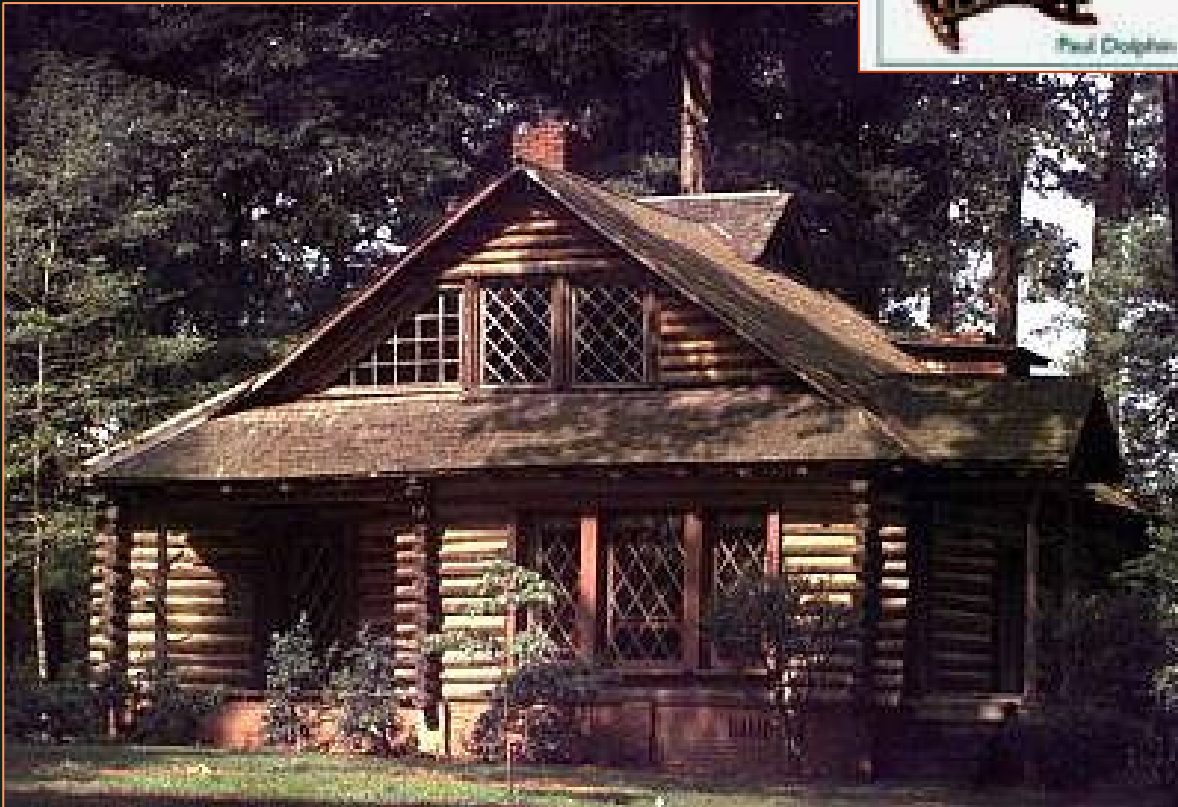
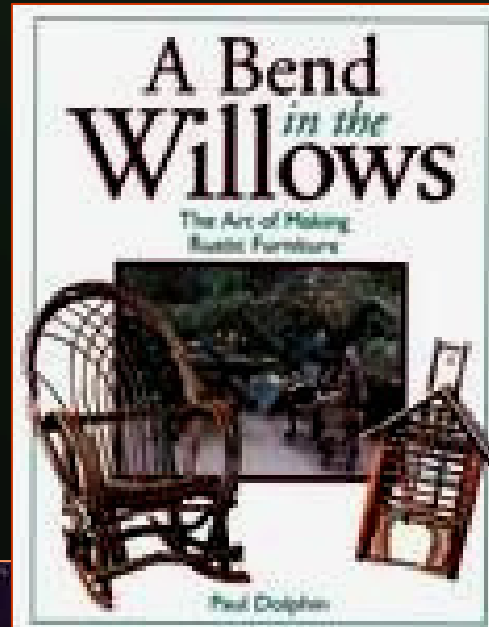
“Great Camp”



Adirondack “Great Camp”
1903-4

From: Kaiser, *The Great Camps of the Adirondacks*, p. 74
www.seanet.com/~tdeering/thesis/ch2/2-19.htm

Adirondack Style





Rustic

Finis