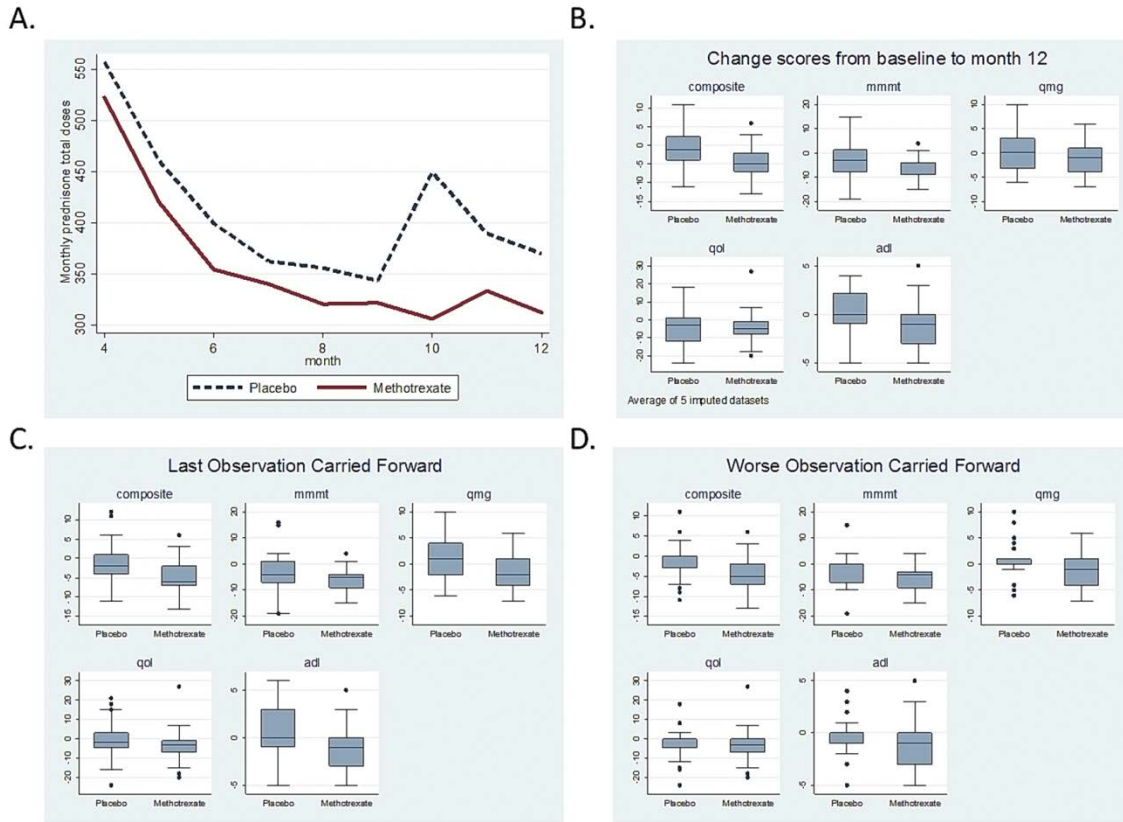


**Supplemental Table e-1.** For daily prednisone dosing, taper monthly according to the following schedule.

<b>Daily Dose (mg)</b>	<b>Decrease Dose to (mg)</b>
60	50
50	40
40	30
30	20
20	15
15	10
10	7.5
7.5	5
5	3
3	2
2	1
1	0

**Supplemental Table e-2.** For every other day prednisone dosing, taper monthly according to the following schedule.

<b>Every Other Day Prednisone Dose (mg)</b>	<b>Decrease Prednisone Dose to (mg)</b>
120	100
100	80
80	60
60	40
40	30
30	20
20	15
15	10
10	7.5
7.5	5.0
5.0	2.5
2.5	0



**Supplemental Figure e-1. Outcome Measures and Imputation Sensitivity Analysis.** A) The prednisone monthly total dose versus time curve for the primary outcome (red = methotrexate, dotted = placebo) shows a separation between methotrexate and placebo that does not reach statistical significance over months 4-12. Sensitivity analysis of secondary outcome measures shows non-significant reductions in clinical measures in the methotrexate group B) using multiple imputation method, C) using the last observation carried forward, and D) the highest dose (or worst measure) carried forward. Composite = MG composite core; mmt = MG manual muscle testing; qmg = quantitative MG score; qol = MG quality of life score; and adl = MG activities of daily living score.