

Homoisoflavonoids are potent glucose transporter 2 (GLUT2) inhibitors – a potential mechanism for the glucose-lowering properties of *Polygonatum odoratum*

Huijun Wang ^{†,‡,∇}, Mark I. Fowler [‡], David J. Messenger [‡], Leon A. Terry [§], Xuelan Gu ^{||}, Luxian Zhou ^{||}, Ruimin Liu [†], Juan Su [†], Songshan Shi [†], José Juan Ordaz-Ortiz [○], Guoping Lian [‡], Mark J. Berry ^{*,‡}, Shunchun Wang ^{*,†}

[†] The MOE Key Laboratory for Standardization of Chinese Medicines and the SATCM Key Laboratory for New Resources and Quality Evaluation of Chinese Medicines, Institute of Chinese Materia Medica, Shanghai University of Traditional Chinese Medicine, 1200 Cailun Road, Shanghai 201203, P. R. China;

[‡] Unilever R&D Colworth, Colworth Science Park, Sharnbrook, Bedford MK44 1LQ, U.K.;

[§] Plant Science Laboratory, Cranfield University, MK43 0AL, U.K.;

^{||} Unilever R&D Shanghai, 5/F, 66 Lin Xin Road, Shanghai 200335, P. R. China;

[∇] Central Research Institute, Shanghai Pharmaceuticals Holding Co., Ltd., Building 4, 898 Halei Road, Shanghai 201203, P. R. China;

[○] National Laboratory of Genomics for Biodiversity, CINVESTAV IPN, 36824 Irapuato, Guanajuato, Mexico.

CORRESPONDING AUTHORS

* Mark J. Berry, Unilever R&D Colworth, Colworth Science Park, Sharnbrook, Bedford MK44 1LQ, U.K. Tel.: +44 1234222180; E-Mail: Mark.Berry@unilever.com ; ORCID: 0000-0002-6211-6151

* Shunchun Wang, Institute of Chinese Materia Medica, Shanghai University of Traditional Chinese Medicine, 1200 Cailun Road, Shanghai 201203, P. R. China; Tel.: +86-21-5132-2511; Fax: +86-21-5132-2519; E-Mail: shunchunwang@126.com ; ORCID: 0000-0003-0384-1350

ABSTRACT

Foods of high carbohydrate content such as sucrose or starch increase postprandial blood glucose concentrations. The glucose absorption system in the intestine comprises two components: sodium-dependent glucose transporter-1 (SGLT1) and glucose transporter 2 (GLUT2). Here five sappanin-type (SAP) homoisoflavonoids were identified as novel potent GLUT2 inhibitors, with three of them isolated from the fibrous roots of *Polygonatum odoratum* (Mill.) Druce. SAP homoisoflavonoids had a stronger inhibitory effect on 25 mM glucose transport ($41.6\pm 2.5\%$, $50.5\pm 7.6\%$, $47.5\pm 1.9\%$, $42.6\pm 2.4\%$, and $45.7\pm 4.1\%$ for EA-1, EA-2, EA-3, MOA, and MOB) than flavonoids ($19.3\pm 2.2\%$, $11.5\pm 3.7\%$, $16.4\pm 2.4\%$, $5.3\pm 1.0\%$, $3.7\pm 2.2\%$, and $18.1\pm 2.4\%$ for apigenin, luteolin, quercetin, naringenin, hesperetin, and genistein) and phloretin ($28.1\pm 1.6\%$) at 15 μM . SAP homoisoflavonoids and SGLT1 inhibitors were found to synergistically inhibit the uptake of glucose using an in vitro model comprising Caco-2 cells. This observed new mechanism of the glucose-lowering action of *P. odoratum* suggests that SAP homoisoflavonoids and their combination with flavonoid monoglucosides show promise as naturally functional ingredients for inclusion in foods and drinks designed to control post-prandial glucose levels.

KEYWORDS: *Polygonatum odoratum*, homoisoflavonoids, GLUT2 inhibitors, synergy, glucose control

■ INTRODUCTION

As a very common chronic disease, diabetes is becoming one of the greatest global health burdens along with cancer, cardiovascular and cerebrovascular diseases because of its high prevalence, morbidity and mortality¹. The prevalence of diabetes for all adults worldwide was estimated to be 415 million in 2015 and this number is expected to increase to *ca.* 642 million by 2040²⁻⁴²⁻⁴. Diabetes is characterized by hyperglycemia resulting from a defect in insulin secretion, insulin action, or both⁵. Consumption of foods high in available carbohydrate such as sucrose or starch increases postprandial blood glucose concentrations⁶. It has been reported that an elevated postprandial glucose level is associated with the development of diabetes. Node *et al.*² reported high post-prandial plasma glucose “spikes” are associated with an increased risk of developing type 2 diabetes. Controlling the post-meal glucose level is known to be important in both diabetic patients as well as normal healthy subjects^{7, 8}. Unregulated glycaemic excursions are undesirable, and any reduction or “blunting” of the post-prandial glucose concentration in blood is potentially beneficial.

The glucose absorption system in the intestine comprises two components. One is a well-established component mediated by the apically located, sodium-dependent glucose transporter-1 (SGLT1), a high-affinity, low-capacity, active transport protein. The other component is glucose transporter 2 (GLUT2), a low-affinity, high-capacity, facilitated transport protein^{9, 10}. Kellett *et al.*¹¹ described the potential interplay of these transporters during the consumption of a carbohydrate rich meal. We have illustrated this interplay schematically in Figure S1. Before the meal, the concentration of free glucose in the lumen of the intestine is low (<5 mM) and the apically expressed SGLT1 transporter actively transports any available glucose into the enterocyte. GLUT2 transporters are also active on the basolateral membrane of the enterocyte, transporting glucose from the blood into the cell to maintain

cellular metabolism if required. During a meal, the local concentration of glucose begins to increase (5–10 mM) and is transported from the intestinal lumen by SGLT1 and subsequently into the systemic circulation via GLUT2. As a consequence of this initial glucose transport across the enterocyte, intracellular stores of GLUT2 are mobilized and targeted to the apical membrane. Shortly after the meal, very high local concentrations of glucose occur (25–100 mM) as the carbohydrate content of the meal is broken down into monosaccharides by alpha-glycosidase enzymes located on the apical enterocyte membrane. At these high levels of glucose, the high affinity, low capacity transporter SGLT1 becomes saturated and the majority of glucose transport across the enterocyte is due to the low affinity, high capacity GLUT2 transporters now present in the apical membrane¹². Flavonoids, (a class of polyphenols) that are widely distributed in food, especially fruits and vegetables, have been reported to have GLUT2 inhibitory effects, including quercetin, isoquercitrin, myricetin, apigenin, luteolin, hesperetin, and hesperidin, however, most of their glycosides are SGLT1 inhibitors^{13, 14}.

Polygonatum odoratum (Mill.) Druce, a famous Yin-nourishing herb in traditional Chinese medicine and an edible food, which grows wildly and is also cultivated in most areas of China, has been used for hundreds of years to treat many diseases including diabetes¹⁵. Previous bioactivity investigation of *P. odoratum* showed that the extracts or ingredients from its fibrous root had glucose-lowering effects with the mechanisms of action involving increasing insulin sensitivity¹⁶, increasing insulin-stimulated glucose uptake¹⁵, inhibiting advanced protein glycation¹⁷, or inhibiting alpha-amylase/alpha-glycosidase enzymes¹⁸. Wang *et al.*¹⁹ reported that the ethanol extract of *P. odoratum* showed potent intestinal glucose transport inhibitory effect. In this study, we investigated the chemical constituents of ethanol extracts of *P. odoratum* and the potential glucose transport inhibitors. Bioassay-directed fractionation led to the isolation of a series of homoisoflavonoids with novel potent GLUT2

inhibitory activity. In addition, these homoisoflavonoids demonstrated synergistic inhibition of glucose transport when combined with previously identified SGLT1-specific antagonists²⁰.

■ MATERIALS AND METHODS

Materials. The reagents of sodium pyruvate solution, D-(+)-glucose, 2-Deoxyglucose, Lucifer Yellow, and fetal bovine serum (FBS) were obtained from Sigma-Aldrich (St. Louis, MO). DMEM+Glutamax-1, Non Essential Amino Acids and dimethyl sulfoxide was purchased from Merck (Gibbstown, NJ). The Amplex Red Glucose/Glucose Oxidase Assay Kit was purchased from Invitrogen (Carlsbad, CA). For cell culture, human epithelial colorectal adenocarcinoma (Caco-2) cells were purchased from American Type Culture Collection (Manassas, VA).

Chemicals. Apigenin, luteolin, quercetin, naringenin, hesperetin, genistein, tectoridin, phloridzin, and phloretin were obtained from Sigma-Aldrich (St. Louis, MO). Luteolin-7-glucoside, myrtillin chloride, naringenin-7-O-glucoside, kaempferol-3-glucoside, and apigenin-8-C-glucoside were purchased from Extrasynthese (Genay, France). Methylophiopogonanone A (MOA) and Methylophiopogonanone B (MOB) were purchased from Shanghai PureOne, Biotechnology Co. Ltd. (Shanghai, China)

Plant material *Polygonatum odoratum* (Mill.) Druce, rhizoma, dried were purchased from Shanghai Kangqiao Pharmacy Co., Ltd. (authenticated by Prof. L.H. Wu at the Institute of Chinese Materia Medica, Shanghai University of Traditional Chinese Medicine, Shanghai), and deposited at the Herbarium of the Institute of Chinese Materia Medica, Shanghai University of Traditional Chinese Medicine, Shanghai. The information includes the producing area (Jiangsu), lot number (111126), and voucher specimen (yz12041211).

Extraction and isolation. *P. odoratum* (1.0 kg) was extracted with an aqueous solution of 95% ethanol for 2 h at a solid-liquid weight ratio of 1:4. The remaining plant root was then extracted with an aqueous solution of 70% ethanol for 2 h at a solid-liquid weight ratio of 1:3. The two aqueous-ethanol extracts were then combined, concentrated and vacuum dried to yield 333.1 g (yield rate 33.3%) *P. odoratum* aqueous ethanol extract¹⁹.

The dried extract (333.1 g) was dissolved in water and partitioned sequentially with petroleum ether, ethyl acetate and 1-butanol to obtain once dried 21.0 g petroleum ether extract (yield rate 6.3%), 4.33 g ethyl acetate extract (yield rate 1.3%), 29.3 g 1-butanol extract (yield rate 8.8%) and 216.5 g water extract (yield rate 65.0%).

The ethyl acetate extract was further purified using a LC3000 semi-preparative HPLC system fitted with a YMC-Pack-C18 column (250 mm × 10 mm, 5 μm). Compounds were eluted isocratically (60% acetonitrile, 40% water with 0.18% formic acid) and the signal was monitored at 280 nm at a flow rate of 6 ml/min. This separation method provided two mixtures (EA-A and EA-B) and three pure compounds, namely EA-1 (38.3 mg, yield rate 0.885%), EA-2 (59.0 mg, yield rate 1.362%), and EA-3 (93.8 mg, yield rate 2.167%) (Figure S2a).

HR-ESI-MS were obtained on a Waters Premier QTOF mass spectrometer, coupled to an UPLC that comprised of an Acquity Waters Ultra-Performance Liquid Chromatographic system equipped with a Waters UPLC column (Acquity UPLC BEH C18, 2.1 × 50 mm, 1.7 μm,) and a Micromass ZQ 2000 ESI mass spectrometer. NMR spectra were obtained on a Bruker AVANCE-III instrument (600 MHz) for ¹H and ¹³C, with tetramethylsilane as internal standard.

Glucose transport assay

Cell culture. Caco-2 cells were cultured in Growth Medium consisting of Dulbecco's modified Eagle's medium (containing Glutamax-1, 4.5 g/L D-glucose and 25 mM 4-(2-hydroxyethyl)-1-piperazine ethanesulphonic acid (HEPES) (Invitrogen)), 10% FBS, 1% non-essential amino acids (Invitrogen) and 1 mM sodium pyruvate (Sigma)). The cells were routinely passaged at approximately 80% confluence using TrypLE™ Express Stable Trypsin-Like Enzyme (Invitrogen) to detach the cells, and seeded at approximately 114 cells/mm² in fresh tissue culture flasks. Only cells between the passage numbers 45 and 49 were used for these experiments²¹.

The method for the formation of differentiated monolayers with good membrane integrity was based on the previous report of Yamashita *et al.*²² Corning® HTS Transwell® 96 well permeable insert supports (Sigma) were collagen coated with 40 µL of 50 µg/mL collagen type I (BD Biosciences) in 0.02 M acetic acid for one hour at room temperature under sterile conditions. The inserts were washed twice in phosphate buffered saline (PBS (Invitrogen)) and the Caco-2 cells seeded into the inserts at 9.6×10^5 cell/mL (75 µL per insert) in Growth Medium and 30 mL of Growth Medium added to the feeder plate below. The cells were left to attach to the collagen matrix and form monolayers over 48 h at 37 °C, 5% CO₂. Both inserts and feeder plate were washed in PBS and the cells incubated with BD Entero-STIM™ Enterocyte Differentiation Medium containing MITO+™ Serum Extender solution (both BD Biosciences), 75 µL per insert and 30 mL in the feeder plate, for a further 48 h at 37 °C, 5% CO₂.

Glucose transport inhibitor cell screening assay. Differentiated cell monolayers were washed gently in Dulbecco's Phosphate Buffered Saline containing CaCl₂ and MgCl₂ (PBS(+)) (Invitrogen)) and the inserts transferred to a new Corning® HTS Transwell®-96 well receiver plate (Sigma). The cells were incubated with fresh PBS(+) (75 µL per insert and 225 µL per well) for 45 min at 37 °C, 5% CO₂.

The PBS(+) was gently aspirated and replaced with 75 μ L per insert of either 5 mM D-glucose (simulated fasting state) \pm test compound or 25 mM D-glucose (simulated fed state) \pm test compound in triplicate and 225 μ L per well of PBS(+) quickly added to each well. The 5 mM glucose wells and the 25 mM glucose wells were incubated at 37 $^{\circ}$ C, 5% CO₂ for 15 min and 30 min, respectively. The cell inserts were transferred to a new receiver plate, the supernatant gently aspirated from the cells and replaced with 100 μ L of a 100 μ M Lucifer Yellow (Sigma) solution to confirm the integrity of the monolayers. 225 μ L of PBS(+) was added to each well and incubated at 37 $^{\circ}$ C, 5% CO₂ for 1 h. The cell inserts were then discarded and the permeability of the membranes to Lucifer Yellow checked by measuring the fluorescence of the samples at 485 nm (excitation) and 530 nm (emission) on a Spectramax Gemini EM fluorescence microplate reader²². 300 μ M Pz and 150 μ M Pt were used as positive controls of simulated fasting and fed states, respectively.

Glucose assay. The amount of glucose transported across the cell monolayers was measured using a glucose oxidase assay. Briefly, 50 μ L of each test sample was transferred to a black sided/clear bottom 96-well plate (Greiner Bio-One) to which 100 μ L of reaction buffer (0.5 μ L 10 mM Ampliflu Red, 1 μ L 10 U/mL Horse Radish peroxidase, 1 μ L 100 U/mL glucose oxidase and 97.5 μ L PBS (all Sigma)) was added. After 10 min incubation at room temperature, the fluorescence of the samples was measured at 530 nm (excitation) and 590 nm (emission) on a Spectramax Gemini EM fluorescence microplate reader and the glucose concentration extrapolated from a standard curve^{19, 23}.

2-Deoxyglucose transport assay

Preparation of differentiated Caco-2 cell monolayers. Caco-2 cells were cultured and routinely passaged as described in Glucose transport assay. Caco-2 cells were seeded into BioCoat HTS Fibrillar

Collagen Multiwell Inserts (BD Biosciences) at 2.5×10^5 cell/ml (500 μ l per insert) in Growth Medium and 30 ml of Growth Medium added to the feeder plate below. The cells were left to attach to the collagen matrix and form monolayers over 24 h at 37 °C, 5% CO₂. Both inserts and feeder plate were washed in PBS and the cells incubated with BD Entero-STIM™ Enterocyte Differentiation Medium containing MITO+™ Serum Extender solution (both BD Biosciences), 500 μ l per insert and 30 ml in feeder plate, for a further 48 h at 37 °C, 5% CO₂.

2-Deoxyglucose transport cell model. Differentiated cell monolayers were washed gently in Dulbecco's Phosphate Buffered Saline containing CaCl₂ and MgCl₂ (PBS (+) (Invitrogen)) and the inserts transferred to a new standard tissue culture 24-well plate. The cells were incubated with fresh PBS (+) (500 μ L per insert and 1 mL per well) for 45 min at 37 °C, 5% CO₂. The PBS(+) was gently aspirated and replaced with 500 μ L per insert of 25 mM 2-Deoxyglucose \pm test compound in triplicate and 1 mL per well of PBS(+) quickly added to each well. The wells were incubated at 37 °C, 5% CO₂ for 30 min. The cell inserts were transferred to a new receiver plate, the supernatant gently aspirated from the cells and replaced with 500 μ L of a 100 μ M Lucifer Yellow (Sigma) solution to confirm the integrity of the monolayers. The details of Lucifer Yellow assay was described in the glucose transport assay section.

2-Deoxyglucose assay. A 200 μ L sample from each well was added to 1 mL of 0.5 M NaBH₄/dimethyl sulfoxide (DMSO). Acetic acid (100 μ L) was added dropwise to reduce the abundance of NaBH₄ after the reduction reaction (90 min at 40 °C). 100 μ L of this solution was acetylated (10 min at 40 °C) after adding 200 μ L of 1-methylimidazole and 1 mL of acetic anhydride. Subsequently, 2 mL of water was added to the extracts for 10 min at 40 °C, and the mixtures were extracted with 2 mL of chloroform. The samples were centrifuged (4000 \times g for 10 min), and the

aqueous layer was discarded. The samples were washed with 2 mL of water. The samples were dried over 1 g sodium sulfate and taken for GC-MS. 25 mM arabinose (2 μ L) was used as an internal standard in each 200 μ L starting sample²⁴.

GC-MS was performed using an Agilent 6890 gas chromatograph (USA) coupled with a mass spectrometer (Agilent 5975, USA). A DB-5 capillary column (30 m \times 0.25 mm \times 0.25 μ m, Agilent) was used with an inlet temperature of 275 $^{\circ}$ C. Column temperature was increased from an initial 140 $^{\circ}$ C to 185 $^{\circ}$ C (5 $^{\circ}$ C/min). It was then increased from 185 $^{\circ}$ C to 190 $^{\circ}$ C (1 $^{\circ}$ C/min), and 190 $^{\circ}$ C to 250 $^{\circ}$ C (10 $^{\circ}$ C/min). Helium was used as a carrier gas at a flow rate of 0.9 mL/min with split ratio 10:1 and 1 μ L sample aliquots were injected. The mass spectrometer was operated in electron impact and full-scan monitoring modes (m/z 25–300). Source temperature, electron energy, and solvent delay were set at 280 $^{\circ}$ C, 70 eV and 5 min respectively.

Synergy between SGLT1 inhibitors and homoisoflavonoids

Preparation of differentiated Caco-2 cell monolayers and glucose transport cell model. Caco-2 cell culture and the method for the formation of differentiated monolayers were the same as the 2-Deoxyglucose transport assay. Differentiated cell monolayers were washed gently in PBS(+) and the inserts transferred to a new standard tissue culture 24-well plate. The cells were incubated with fresh PBS(+) (500 μ l per insert and 1 ml per well) for 30 min at 37 $^{\circ}$ C and 5% CO₂. The PBS(+) was gently aspirated and replaced with 250 μ l per insert of 5 mM D-glucose \pm test compound and 1 ml of PBS(+) quickly added to each well below before the cells were replaced in the incubator at 37 $^{\circ}$ C and 5% CO₂. After 15 min, the cell inserts were transferred to a new 24-well plate, and a further 250 μ l of 45 mM D-glucose \pm test compound was added to each insert (resulting in a final concentration of glucose of

25 mM) and again 1 ml of PBS(+) added to the wells. After a further 15 min the inserts were transferred to a new 24-well plate and this time only fresh PBS(+) was added to the wells below. This step was repeated after another 15 min. The integrity of the monolayers was confirmed using Lucifer Yellow as described previously.

Glucose assay. After the last incubation, all of the retained PBS(+) from each step (i.e. at 15, 30, 45 and 60 min) was assayed for glucose levels as described in Example 1, and the total cumulative glucose transport calculated. The localized changes in luminal glucose concentrations described and illustrated in example 1 are mimicked in-vitro through an initial short incubation of differentiated Caco-2 cells with a low level of D-glucose (5 mM for 15 min) immediately followed by a sustained incubation with a high level of D-glucose (final concentration of 25 mM for 45 min).

Statistical analysis. All data are expressed as mean \pm standard error of the mean. Statistical analysis was performed with one-way ANOVA using GraphPad Prism 5.01 (GraphPad Software, San Diego, CA, USA). Treatment differences were subjected to Tukey's multiple comparison tests. Differences with $p < 0.05$ were considered statistically significant.

■ RESULTS AND DISCUSSION

Isolation and structure elucidation of homoisoflavonoids from *P. odoratum*. To find a novel and potent glucose transport inhibitor and further target for functional ingredient development, bioassay-directed fractionation of the ethyl acetate fraction of the aqueous ethanol extract of a dried root part of *P. odoratum*, by semi-preparative HPLC system as detailed in the experimental section was performed. This led to the isolation of two mixtures (EA-A and EA-B) and three pure compounds, namely EA-1, EA-2 and EA-3 (Figure S2a). EA-1, EA-2 and EA-3, with stronger glucose transport inhibitory effect

than EA-A and EA-B (Figure S2b), were identified by comparing their spectroscopic data (^1H , ^{13}C -NMR, MS) (Figure S3-S9) with those reported^{25,26}. They are 5,7-dihydroxy-3-(4'-hydroxybenzyl)-6-methylchroman-4-one (EA-1), 5,7-dihydroxy-3-(4'-hydroxybenzyl)-6-methyl-8-methoxychroman-4-one (EA-2), and 5,7-dihydroxy-3-(4'-hydroxybenzyl)-6, 8-dimethylchroman-4-one (EA-3) respectively. Zhang *et al.*¹⁵ reported that the ethyl acetate soluble fraction of a 90% methanol extract of the fibrous roots of *P. odoratum* affected an insulin-stimulated glucose uptake in differentiated 3T3-L1 adipocytes. Bioassay-guided fractionation yielded nine homoisoflavonoids, together with an isoflavone glycoside and a flavanone glycoside, including EA-1, EA-2, EA-3 and tectoridin, which indicated that homoisoflavonoids may be potential insulin sensitizers. However, we are not aware of any reports about homoisoflavonoids having an effect on glucose transport. Previous phytochemical investigations on *P. odoratum* resulted in the isolation of nineteen homoisoflavonoids (Figure 1)^{27, 28}. However, in our study, only three homoisoflavonoids (**9**: EA-1, **10**: EA-2, **11**: EA-3) were obtained by the method of bioassay-directed fractionation. This specific assay may thus have not allowed the isolation of other homoisoflavonoids of either lower concentration or activity. To expand the sample size for our study of the bioactivity, mechanism and synergy, another two homoisoflavonoids, namely methylophiopogonanone A (MOA) and methylophiopogonanone B (MOB), were purchased (Shanghai PureOne, Biotechnology Co. Ltd); the other homoisoflavonoids are not commercial available. All five homoisoflavonoids had similar structure (Figure 2).

***P. odoratum* extracts & homoisoflavonoids inhibit glucose transport.** Table 1 shows that a crude aqueous ethanol extract of *P. odoratum* can significantly inhibit glucose transport across a differentiated monolayer of Caco-2 cells at both low (simulated fasted state) and high (simulated fed state) glucose concentrations. Further sequential partition demonstrated a similar inhibition activity

with both the petroleum ether (PE) and ethyl acetate (EA) fractions. However, the 1-butanol fraction only exhibited significant glucose transport inhibition activity at the lowest glucose concentration and no inhibitory activity was detected in the water fraction.

The EA fraction was chosen for further purification based on its high glucose transport inhibition activity, yielding five sub-fractions, two of which were mixtures (EA-A and EA-B) and the rest which were mainly single compounds (EA-1, EA-2 & EA-3). While EA-A only demonstrated significant glucose transport inhibition at low glucose levels, the other sub-fractions all inhibited glucose transport at both glucose concentrations. In addition, the commercially available homoisoflavonoids, methylophiopogonanone A (MOA) and methylophiopogonanone B (MOB), also significantly inhibited glucose transport at both low and high glucose concentrations (Table 1).

Homoisoflavonoids are potent GLUT2 inhibitors. Berry *et al.*²⁰ suggested that a compound with >20% inhibition of glucose transport at both low (5 mM) and high (25 mM) glucose concentrations was indicative of a GLUT2-specific inhibitor. Since all five pure homoisoflavonoids (EA-1, EA-2, EA-3, MOA and MOB) met this specification (Table 1), their GLUT2 specificity was confirmed using 2-deoxyglucose, which is only transported by GLUT2 and not by SGLT1^{13, 29}. The data showed that all five homoisoflavonoids, at 15 μ M inhibited 2-deoxyglucose transport (25 mM) with the inhibition rate corresponding to the glucose transport inhibition rate (Figure 3A). In addition, the well characterized GLUT2 specific inhibitor, phloretin¹¹, demonstrated a similar pattern of inhibition to the homoisoflavonoids suggesting that they are indeed GLUT2 inhibitors.

In our study, EA-1, EA-2, and EA-3 have good solubility in PBS(+) glucose solution, with IC₅₀ values of 47.43 μ M, 53.47 μ M, and 21.14 μ M at 25 mM glucose, respectively (Figure 3B). The low

IC₅₀ values of EA-1, EA-2 and EA-3 demonstrates the potent glucose transport inhibitory activity of these homoisoflavonoids. The IC₅₀ values of MOA and MOB could not be obtained due to solubility issues at higher concentrations. However, interestingly all five homoisoflavonoids have good solubility at 15 μM, therefore the concentration of 15 μM was selected as the test concentration for the following studies. Surprisingly, at this concentration the five homoisoflavonoids (EA-1, EA-2, EA-3, MOA and MOB) exhibited significantly enhanced glucose transport inhibitory activities than the GLUT2 inhibitor phloretin at high glucose concentrations (Figure 4). In addition, the homoisoflavonoids showed stronger inhibitory effects on 25 mM glucose transport than flavonoid aglycones (apigenin, luteolin, quercetin, naringenin, hesperetin, and genistein) (Figure 4) which have been widely identified as effective GLUT2 inhibitors^{13, 14}. Indeed, the IC₅₀ on 25 mM glucose transport of EA-1, EA-2 and EA-3 were lower than apigenin (259.5 μM), luteolin (62.4 μM), naringenin (295.1 μM), hesperetin (162.7 μM), and genistein (157.8 μM) and similar to quercetin (41.6 μM) (Table S1).

Synergy between homoisoflavonoids and flavonoid monoglucosides. Berry *et al.*²⁰ demonstrated the synergistic inhibition of glucose transport across a differentiated Caco-2 monolayer by combining both SGLT1 and GLUT2 inhibitors in a cell model designed to mimic the local changes in glucose concentration during the digestion of a carbohydrate rich meal. Figure 5 plots the total cumulative glucose transport across a differentiated Caco-2 monolayers in the presence or absence of a SGLT1 inhibitor for the first 15 min in 5 mM D-glucose and subsequently in the presence or absence of a GLUT2 inhibitor in 25 mM D-glucose for the remaining 45 min. To validate this cell system, Pz and Pt were used as the widely accepted specific inhibitors of SGLT1 and GLUT2 respectively (Figure 5A). Pz shows a reduction in total Cumulative Glucose Transport (tCGT) when added from the beginning of the cell system (Pz NC-horizontal striped bar), demonstrating the inhibition of SGLT1

which is the dominant active transporter at low glucose levels. However Pz exhibits no inhibition on tCGT when added later with the high concentration of D-glucose (NC Pz -dotted bar) since the SGLT1 transporters are now saturated and glucose transport is now dependent on the high capacity GLUT2 transporters. Pt demonstrates a significant reduction in tCGT when added with the high concentration of D-glucose as expected (NC Pt -diagonal striped bars). However a combination of 300 μ M Pz at low glucose concentrations, followed by 125 μ M Pt at the high glucose concentration appears to significantly and synergistically inhibit the tCGT. This synergy exploits the requirement of an initial transport of glucose into the enterocyte by SGLT1 before the high-capacity GLUT2 can be targeted to the apical membrane. Used in combination, both SGLT1 and GLUT2 inhibitors can synergistically inhibit the localized uptake of glucose from the intestinal lumen and hence potentially reduce the high 'spikes' of postprandial blood glucose associated with the potential risk of developing type 2 diabetes.

Berry *et al.*²⁰ disclosed examples of SGLT1 inhibitors, all being flavonoid monoglucosides, such as luteolin-7-glucoside, apigenin-7-glucoside, apigenin-8-c-glucoside, kaempferol-3-glucoside, kaempferol-7-glucoside, quercetin-3-glucoside, quercetin-4-glucoside, naringenin-7-glucoside, eriodictiol-7-glucoside, daidzein-8-C-glucoside, daidzein-7-glucoside, cyanidin-3-glucoside, malvidin-3-O-glucoside, delphinidin-3-glucoside (myrtillin chloride) and pelargonidin-3-glucoside. Indeed, the presence of an additional glucose moiety on the chemical structure removes this inhibitory action as demonstrated by quercetin-3,4'-diglucoside. The specificity for a glucoside is confirmed by the absence of SGLT1 inhibitory activity by other flavonoid glycosides tested, including cyanidin-3-rutinoside and malvidin-3-O-galactoside. In addition, the lack of SGLT1 inhibitory activity shown by the hydroquinone monoglucoside, arbutin, reinforces the importance of a flavonoid and dihydrochalcone structures in the glucoside molecule. Tectoridin, a flavonoid monoglucoside present

in *P. odoratum*¹⁵, might be a SGLT1 inhibitors as well, with a glucose transport inhibition rate at 5 mM glucose of $29.41 \pm 0.62\%$ and $4.92 \pm 2.08\%$ at 25 mM glucose with 300 μM tectoridin.

Figure 5 summarises the results using the above-mentioned Caco-2 assay with combinations of selected homoisoflavonoids, as potent GLUT2 inhibitors and SGLT1 inhibitors (a variety of flavonoid monoglucosides) and clearly shows that in combination, both SGLT1 inhibitors and homoisoflavonoids can synergistically inhibit glucose transport. For example, the specific SGLT1 inhibitor tectoridin (isoflavone monoglucoside, 300 μM) was combined with the specific GLUT2 inhibitor EA-1 (homoisoflavonoids, 10 μM) to demonstrate the synergistic inhibition of glucose transport across a differentiated Caco-2 cell monolayer (Figure 5B). Combining luteolin-7-glucoside (flavone monoglucoside, 300 μM) & EA-1 (homoisoflavonoids, 10 μM) (Figure 5C), or myrtillin chloride (anthocyanin, 300 μM) & MOB (homoisoflavonoids, 5 μM) (Figure 5D), or naringenin-7-O-glucoside (flavanone monoglucoside, 300 μM) & MOB (homoisoflavonoids (Figure 5E), 5 μM), or kaempferol-3-glucoside (flavonol monoglucoside, 150 μM) & EA-2 (homoisoflavonoids, 10 μM) (Figure 5F), tectoridin (isoflavone monoglucoside, 300 μM) & MOA (homoisoflavonoids, 5 μM) (Figure 5G), or apigenin-8-C-glucoside (flavone monoglucoside, 300 μM) & EA-3 (homoisoflavonoids, 2.5 μM) (Figure 5H), demonstrated the synergistic inhibition of glucose transport across a differentiated Caco-2 cell monolayer.

Discussion. Diabetes is characterized by hyperglycemia, which can cause diabetic complications including cardiovascular disease, nephropathy, retinopathy, and neuropathy³⁰. Disturbance of glucose homeostasis is a major factor in the development of hyperglycemia. In type 2 diabetes, pancreatic beta cells are damaged or become dysfunctional because of the persistently high glucose or lipid levels, inflammatory mediators released from the adipose tissue and endoplasmic reticulum, or oxidative

stress^{31,32}. Thus controlling the post-meal glucose level may be a strategic approach for the prevention and treatment of diabetes^{7,8}. In our study, we demonstrated for the first time that homoisoflavonoids have an inhibitory effect on glucose transport in intestinal cells. Fractions EA-1, EA-2, EA-3 were isolated from the fibrous roots of *P. odoratum*; MOA and MOB were purchased from commercial suppliers who had isolated them from the root tubers of *Ophiopogon japonicus* (Asparagaceae family).

Homoisoflavonoids, a subclass of flavonoids, are rarely found in nature: they have only been identified in six plant families so far (Asparagaceae, Fabaceae, Polygonaceae, Portulacaceae, Orchidaceae, and Gentianaceae)²⁷. The majority of homoisoflavonoids have been reported from the families of Asparagaceae (*P. odoratum* belongs to Asparagaceae family) and Fabaceae²⁷. The homoisoflavonoids are classified into five groups based on their structures: sappanin-type (I), scillascillin-type (II), brazilin-type (III), caesalpin-type (IV), and protosappanin-type (V). EA-1, EA-2, EA-3, MOA, and MOB were classed as sappanin-type homoisoflavonoids (SAP homoisoflavonoids) bearing a 3-benzyl chromane skeleton, in which the benzopyran and aromatic rings are connected via one carbon, however, the benzopyran and aromatic rings are connected directly for the structure of flavonoids. As of 2014, 191 SAP homoisoflavonoids have been isolated and structurally elucidated²⁷. SAP homoisoflavonoids have shown significant activities in the regulation of insulin-stimulated glucose uptake in differentiated 3T3-L1 adipocytes¹⁵, AMPK and acetyl-CoA carboxylase in IAR-20 cells³³, and advanced glycation end product formation³⁴. Moreover, the results in the present study indicated that SAP homoisoflavonoids are potent GLUT2 inhibitors, with significantly higher glucose transport inhibitory activities than phloretin at high glucose concentrations. In addition, the SAP homoisoflavonoids showed stronger inhibitory effects on 25 mM glucose transport than flavonoid aglycones (apigenin, luteolin, quercetin, naringenin, hesperetin, and genistein).

P. odoratum is native to Europe, Caucasus, Siberia, Russian Far East, China, Mongolia, Korea and Japan²⁸. In China, it is cultivated in most areas, its rhizomes have been widely used as an ingredient/supplement in food (e.g. functional/healthy food, flavours and tea preparation), and a well-known traditional Chinese medicine for removing dryness, promoting secretion of fluid and quenching thirst³⁵. In our study, three SAP homoisoflavonoids (EA-1, EA-2, EA-3) were isolated from the fibrous roots of *P. odoratum*; with potent GLUT2 inhibitory effects. Additionally, sixteen other SAP homoisoflavonoids have been isolated from *P. odoratum* (Figure 1)^{27, 28}. Interestingly, flavonoid monoglucosides (SGLT1 inhibitors) were also isolated from *P. odoratum* (e.g. tectoridin, hesperidin and 4'-demethyleucomin 7-O- β -D-glucopyranoside)¹⁵. Since both SAP homoisoflavonoids and flavonoid glycosides are present in *P. odoratum*, they may show synergetic effects on glucose-lowering in diabetic patients. These results suggest a new mechanism for the anti-diabetic action of *P. odoratum* and suggest that consumption of *P. odoratum* (containing both SAP homoisoflavonoids and flavonoid glycosides) may be beneficial for the reduction or “blunting” of post-prandial glucose concentration in blood. However, the very low abundance of these flavonoid monoglucosides in *P. odoratum* may prevent the efficient synergy with SAP homoisoflavonoids suggesting that a combination of *P. odoratum* with a plentiful source of flavonoid monoglucosides would be a promising new nutraceutical agent or functional food ingredient for controlling post-prandial blood glucose.

■ ASSOCIATED CONTENT

Supporting information

Glucose transport inhibitory effect and IC₅₀ of homoisoflavonoids and flavonoids; A model of the glucose concentration timeline during a meal; Semi-preparative HPLC chromatogram of the ethyl

acetate extract from *P. odoratum* aqueous ethanol extract detected at 280nm; Inhibitory rate of phloridzin (Pz), phloretin (Pt), EA-A, EA-B, EA-1, EA-2, and EA-3 at 5 mM and 25mM glucose transport, respectively, EA-A, EA-B, EA-1, EA-2, EA-3 were isolated from EA by Semi-preparative HPLC chromatogram; QTOF-MS spectra, ¹H NMR and ¹³C NMR of EA-1, EA-2 and EA-3; Details chemical information of Peak EA-1, EA-2 and EA-3.

■ ACKNOWLEDGMENTS

This research was supported by the Unilever Research Colworth Grant (CH-2011-1033), the National Natural Science Foundation of China [No. 81373951] and the China Postdoctoral Science Foundation funded project [No. 2016M601637].

■ AUTHOR CONTRIBUTIONS

H.W., M.I.F., L.A.T., X.G., G.L., M.J.B., and S.W. conceptualized and designed the study. H.W. drafted the manuscript, and M.I.F., D.J.M, L.Z., J.J.O.O., G.L., M.J.B., and S.W. revised it. H.W. and M.I.F. performed biological experiments and data collections. H.W., D.J.M, R.L., J.S., and S.S contributed to bioassay-directed fractionation, structure identification and GC/MS 2-deoxyglucose assay. H.W., L.A.T., and J.J.O.O. contributed to homoisoflavonoids identification by LC-MS/MS. H.W., X.G., L.Z., G.L., M.J.B., and S.W. contributed to TCM herb scoping and preliminary activity assay. All authors contributed to data interpretation, reviewed the manuscript and approved the final version.

Notes

Two authors (H.W. and M.I.F.) are named inventors on international patent specifications “Edible composition” initially published in 2017 (WO/2017/036926) that contain partial information found in this manuscript. All other authors declare no competing financial interest.

■ Abbreviations Used

GLUT2, glucose transporter 2; SGLT1, sodium-dependent glucose transporter-1; SAP, sappanin-type; FBS, fetal bovine serum; HPLC, high performance liquid chromatography; HR-ESI-MS, high-resolution electrospray ionization mass spectrometry; QTOF, quadrupole time-of-flight; UPLC, ultra-performance liquid chromatography; NMR, nuclear magnetic resonance; GC-MS, gas chromatography-mass Spectrometer; EA-1, 5,7-dihydroxy-3-(4'-hydroxybenzyl)-6-methylchroman-4-one; EA-2, 5,7-dihydroxy-3-(4'-hydroxybenzyl)-6-methyl-8-methoxychroman-4-one; EA-3, 5,7-dihydroxy-3-(4'-hydroxybenzyl)-6, 8-dimethylchroman-4-one; MOA, methylophiopogonanone A; MOB, methylophiopogonanone B; PE, petroleum ether; EA: ethyl acetate; tCGT, total cumulative glucose transport

■ REFERENCES

1. Eckel, R. H.; Alberti, K. G. M. M.; Grundy, S. M.; Zimmet, P. Z., The metabolic syndrome. *Medical Clinics of North America* **2005**, 365, (9468), 1415-1428.
2. Node, K.; Inoue, T., Postprandial hyperglycemia as an etiological factor in vascular failure. *Cardiovascular Diabetology* **2009**, 8, (1), 1-10.
3. Wu, J.; Shi, S.; Wang, H.; Wang, S., Mechanisms underlying the effect of polysaccharides in the treatment of type 2 diabetes: A review. *Carbohydrate Polymers* **2016**, 144, 474-494.
4. IDF Diabetes Atlas 7th edition www.idf.org/diabetesatlas www.idf.org/diabetesatlas.
5. Malchoff, C. D., Diagnosis and Classification of Diabetes Mellitus. *Diabetes Care* **2013**, 36, (Suppl 1), S67-S74.
6. Drozdowski, L. A.; Thomson, A. B., Intestinal sugar transport. *World Journal of Gastroenterology* **2006**, 12, (11), 1657-1670.
7. Bell, K. J.; Smart, C. E.; Steil, G. M.; Brand-Miller, J. C.; King, B.; Wolpert, H. A., Impact of fat, protein, and glycemic index on postprandial glucose control in type 1 diabetes: implications for intensive diabetes management in the continuous glucose monitoring era. *Diabetes Care* **2015**, 38, (6), 1008-1015.
8. Hinnen, D. A., Therapeutic Options for the Management of Postprandial Glucose in Patients With

Type 2 Diabetes on Basal Insulin. *Clinical Diabetes A Publication of the American Diabetes Association* **2015**, 33, (4), 175-180.

9. Zheng, Y.; Scow, J. S.; Duenes, J. A.; Sarr, M. G., Mechanisms of glucose uptake in intestinal cell lines: role of GLUT2. *Surgery* **2012**, 151, (1), 13-25.

10. Thorens, B.; Cheng, Z. Q.; Brown, D.; Lodish, H. F., Liver glucose transporter: a basolateral protein in hepatocytes and intestine and kidney cells. *The American journal of physiology* **1990**, 259, (1), 279-285.

11. Kellett, G. L.; Brotlaroche, E., Apical GLUT2: a major pathway of intestinal sugar absorption. *Diabetes* **2005**, 54, (10), 3056-3062.

12. Wright, E. M.; Martín, M. G.; Turk, E., Intestinal absorption in health and disease--sugars. *Best Practice & Research Clinical Gastroenterology* **2004**, 17, (6), 943-956.

13. Kwon, O.; Eck, P.; Chen, S.; Corpe, C. P.; Lee, J. H.; Kruhlak, M.; Levine, M., Inhibition of the intestinal glucose transporter GLUT2 by flavonoids. *Faseb Journal Official Publication of the Federation of American Societies for Experimental Biology* **2007**, 21, (2), 366-377.

14. Ross, J. A.; Kasum, C. M., Dietary flavonoids: bioavailability, metabolic effects, and safety. *Annu Rev Nutr. Annual Review of Nutrition* **2002**, 22, (1), 19-34.

15. Zhang, H.; Yang, F.; Qi, J.; Song, X. C.; Hu, Z. F.; Zhu, D. N.; Yu, B. Y., Homoisoflavonoids from the fibrous roots of *Polygonatum odoratum* with glucose uptake-stimulatory activity in 3T3-L1 adipocytes. *Journal of Natural Products* **2010**, 73, (4), 548-552.

16. Miura, T.; Kato, A., The difference in hypoglycemic action between *polygonati rhizoma* and *polygonati officinalis* rhizoma. *Biological & Pharmaceutical Bulletin* **1995**, 18, (11), 1605-1606.

17. Wei, D.; Hai, B. S.; Ma, H.; Yan, B. M.; Tong, J. L.; Wei, W., Homoisoflavanones from *Polygonatum odoratum* rhizomes inhibit advanced glycation end product formation. *Archives of Pharmacal Research* **2010**, 33, (5), 669-674.

18. Zhou, X.; Liang, J.; Zhang, Y.; Zhao, H.; Guo, Y.; Shi, S., Separation and purification of α -glucosidase inhibitors from *Polygonatum odoratum* by stepwise high-speed counter-current chromatography combined with Sephadex LH-20 chromatography target-guided by ultrafiltration-HPLC screening. *Journal of Chromatography B* **2015**, 985, 149-154.

19. Wang, H.; Shi, S.; Wang, S., Can highly cited herbs in ancient Traditional Chinese medicine formulas and modern publications predict therapeutic targets for diabetes mellitus? *Journal of*

Ethnopharmacology **2018**, 213, 101-110.

20. Berry, M., John; Fowler, M., Ian; Heath, A., David, An edible composition comprising resveratrol and flavonoid monoglucoside. In 2014.
21. Hubatsch, I.; Ragnarsson, E. G.; Artursson, P., Determination of drug permeability and prediction of drug absorption in Caco-2 monolayers. *Nature Protocols* **2006**, 2, (9), 2111-2119.
22. Yamashita, S.; Konishi, K.; Yamazaki, Y.; Taki, Y.; Sakane, T.; Sezaki, H.; Furuyama, Y., New and better protocols for a short-term Caco-2 cell culture system. *Journal of Pharmaceutical Sciences* **2002**, 91, (3), 669-679.
23. Hu, Y. C.; Luo, Y. D.; Li, L.; Joshi, M. K.; Lu, Y. H., In vitro investigation of 2',4'-dihydroxy-6'-methoxy-3',5'-dimethylchalcone for glycemic control. *Journal of Agricultural and Food Chemistry* **2012**, 60, (42), 10683-10688.
24. Wu, T.; Yang, M.; Wei, H. F.; He, S. H.; Wang, S. C.; Ji, G., Application of Metabolomics in Traditional Chinese Medicine Differentiation of Deficiency and Excess Syndromes in Patients with Diabetes Mellitus. *Evidence-based Complementary and Alternative Medicine* **2012**, 2012, (3), 968083.
25. Rafi, M. M.; Vastano, B. C., Identification of a structure specific Bcl-2 phosphorylating homoisoflavone molecule from Vietnamese coriander (*Polygonatum odoratum*) that induces apoptosis and G2/M cell cycle arrest in breast cancer cell lines. *Food Chemistry* **2007**, 104, (1), 332-340.
26. Wang, D.; Li, D.; Zhu, W.; Peng, P., A new C-methylated homoisoflavanone and triterpenoid from the rhizomes of *Polygonatum odoratum*. *Natural Product Research* **2009**, 23, (6), 580-589.
27. Lin, L. G.; Liu, Q. Y.; Ye, Y., Naturally occurring homoisoflavonoids and their pharmacological activities. *Planta Medica* **2014**, 80, (13), 1053-1066.
28. Zhou, X.; Yuping, Z.; Zhao, H.; Liang, J.; Zhang, Y.; Shi, S., Antioxidant homoisoflavonoids from *Polygonatum odoratum*. *Food Chemistry* **2015**, 186, 63-68.
29. Kalsi, K. K.; Baker, E. H.; Medina, R. A.; Rice, S.; Wood, D. M.; Ratoff, J. C.; Philips, B. J.; Baines, D. L., Apical and basolateral localisation of GLUT2 transporters in human lung epithelial cells. *Pflügers Archiv - European Journal of Physiology* **2008**, 456, (5), 991-1003.
30. Yim, S.; Malhotra, A.; Veves, A., Antioxidants and CVD in diabetes: Where do we stand now? *Current Diabetes Reports* **2007**, 7, (1), 8-13.
31. Li, W. L.; Zheng, H. C.; Bukuru, J.; De, K. N., Natural medicines used in the traditional Chinese medical system for therapy of diabetes mellitus. *Journal of Ethnopharmacology* **2004**, 92, 1-21.

32. Kikkawa, R., Chronic complications in diabetes mellitus. *British Journal of Nutrition* **2000**, 84 (S2), S183-S185.
33. Guo, H.; Zhao, H.; Kanno, Y.; Li, W.; Mu, Y.; Kuang, X.; Inouye, Y.; Koike, K.; Jiang, H.; Bai, H., A dihydrochalcone and several homoisoflavonoids from *Polygonatum odoratum* are activators of adenosine monophosphate-activated protein kinase. *Bioorganic & Medicinal Chemistry Letters* **2013**, 23, (11), 3137-3139.
34. Dong, W.; Shi, H. H.; Miao, Y. B.; Liu, T. J.; Wang, W., Homoisoflavanones from *Polygonatum odoratum* rhizomes inhibit advanced glycation end product formation. *Archives of Pharmacal Research* **2010**, 33, (5), 669-674.
35. Lan, G.; Chen, H.; Wang, Z.; Zhang, W.; Zhang, L., Extraction of *Polygonatum odoratum* polysaccharides using response surface methodology and preparation of a compound beverage. *Carbohydrate Polymers* **2011**, 86, (3), 1175-1180.

Figure captions

Figure 1. The chemical profile of the homoisoflavonoids in the *Polygonatum odoratum*, among of them **9**: EA-1, **10**: EA-2, **11**: EA-3.

Figure 2. The structures of SAP homoisoflavonoids. The code name indicates the notation used throughout.

Figure 3. SAP homoisoflavonoids inhibition of glucose and 2-deoxyglucose transport. **(A)** Inhibitory rate of EA-1, EA-2, EA-3, MOA, MOB and phloretin (Pt) on 25mM glucose and 25mM 2-deoxyglucose transport at the concentration of 15 μ M (n=3, NS: no significant difference, *P<0.05); **(B)** SAP homoisoflavonoids inhibition of glucose transport at 25 mM glucose in Caco-2 cells (n=3).

Figure 4. Inhibitory rate of homoisoflavonoids (EA-1, EA-2, EA-3, MOA, and MOB), flavonoids (apigenin (A), luteolin (L), quercetin (Q), naringenin (N), hesperetin (H), and genistein(G)) and phloretin (Pt) on 25mM glucose transport at the concentration of 15 μ M (n=3), the significant differences between groups are indicated by different letters a-d at P < 0.05.

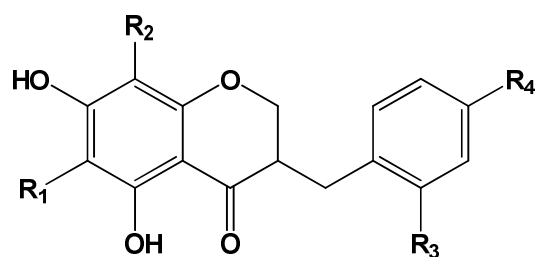
Figure 5. The total cumulative glucose transport across differentiated Caco-2 monolayers in the presence or absence of a SGLT1 inhibitor for the first 15 min in 5 mM D-glucose and subsequently in the presence or absence of a GLUT2 inhibitor in 25 mM D-glucose for the remaining 45 min. **A**: Cumulative glucose transport by phloridzin (Pz, 300 μ M) & phloretin (Pt, 125 μ M); **B**: Cumulative glucose transport by tectoridin (T, 300 μ M) & EA-1 (5 μ M); **C**: Cumulative glucose transport by luteolin-7-glucoside (L7G, 300 μ M) & EA-1 (2.5 μ M); **D**: Cumulative glucose transport by myrtillin chloride (MC, 300 μ M) & MOB (5 μ M); **E**: Cumulative glucose transport by naringenin-7-O-glucoside (N7G, 300 μ M) & MOB (5 μ M); **F**: Cumulative glucose transport by kaempferol-3-glucoside

(K3G, 150 μ M) & EA-2 (10 μ M); **G**: Cumulative glucose transport by tectoridin (T, 300 μ M) & MOA (5 μ M); **H**: Cumulative glucose transport by apigenin-8-C-glucoside (A8G, 300 μ M) & EA-3 (2.5 μ M), the significant differences between groups are indicated by different letters a-d at $P < 0.05$, (n=3)

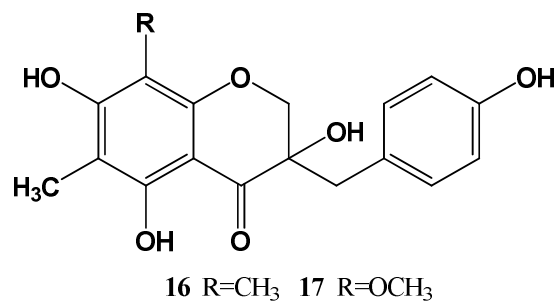
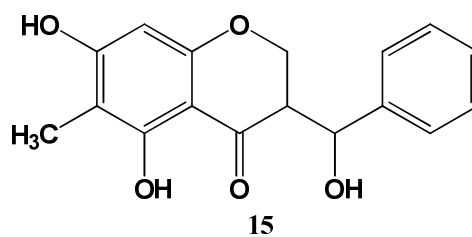
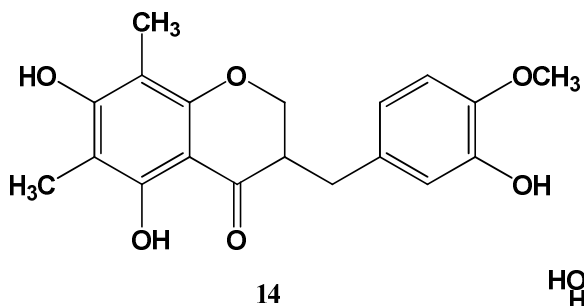
Table 1. Glucose transport inhibition of ethanol extract of *P. odoratum* and its bioassay directed fractions

Samples (200 µg/mL)	% Glucose transport inhibition	
	5 mM D-Glucose	25 mM D-Glucose
Ethanol extract (EE)	71.1±3.2	48.6±3.3
Petroleum ether Fraction (PE)	75.4±0.2	51.8±1.1
Ethyl acetate fraction (EA)	98.9±0.5	58.6±3.6
1-Butanol fraction (1-But)	48.0±2.6	17.2±0.1
Water fraction (Water)	7.4±1.3	3.3±1.5
EA-A	29.6±2.3	7.4±3.0
EA-B	65.4±2.2	41.9±7.6
EA-1	90.7±1.4	66.6±5.2
EA-2	89.9±0.1	63.0±2.9
EA-3	91.2±0.5	67.4±5.9
MOA	39.3±2.2	27.7±3.7
MOB	46.2±2.0	30.6±3.2
Phloridzin	31.4 ± 1.5	14.2 ± 1.1
Phloretin	90.4 ± 2.2	58.2 ± 1.8

Phloridzin and pure homoisoflavonoids were tested at 300 µM and Phloretin was tested at 150 µM. The other samples were tested at 200 µg/mL, EA-A, EA-B, EA-1, EA-2, EA-3 were isolated from EA.



- | | | | | |
|----|----------------------------------|----------------------------------|--------------------|----------------------------------|
| 1 | R ₁ =H | R ₂ =CH ₃ | R ₃ =OH | R ₄ =OH |
| 2 | R ₁ =H | R ₂ =CH ₃ | R ₃ =H | R ₄ =OH |
| 3 | R ₁ =H | R ₂ =H | R ₃ =OH | R ₄ =OCH ₃ |
| 4 | R ₁ =H | R ₂ =H | R ₃ =OH | R ₄ =OH |
| 5 | R ₁ =H | R ₂ =H | R ₃ =H | R ₄ =OH |
| 6 | R ₁ =H | R ₂ =OCH ₃ | R ₃ =OH | R ₄ =OCH ₃ |
| 7 | R ₁ =OCH ₃ | R ₂ =CH ₃ | R ₃ =OH | R ₄ =OH |
| 8 | R ₁ =OCH ₃ | R ₂ =H | R ₃ =H | R ₄ =OCH ₃ |
| 9 | R ₁ =CH ₃ | R ₂ =H | R ₃ =H | R ₄ =OH |
| 10 | R ₁ =CH ₃ | R ₂ =OCH ₃ | R ₃ =H | R ₄ =OH |
| 11 | R ₁ =CH ₃ | R ₂ =CH ₃ | R ₃ =H | R ₄ =OH |
| 12 | R ₁ =CH ₃ | R ₂ =OCH ₃ | R ₃ =H | R ₄ =OCH ₃ |
| 13 | R ₁ =CH ₃ | R ₂ =CH ₃ | R ₃ =OH | R ₄ =OCH ₃ |



16 R=CH₃ 17 R=OCH₃

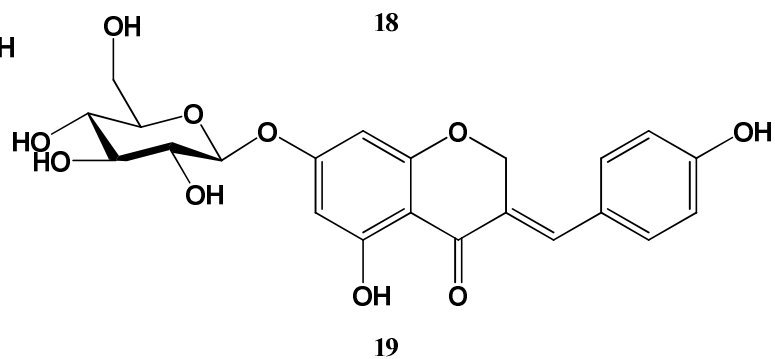
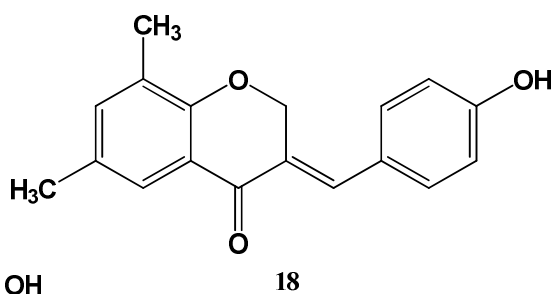
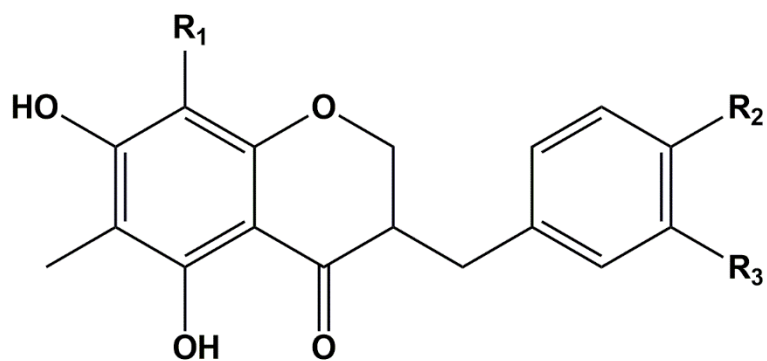


Figure 1



Code name	R ₁	R ₂	R ₃
EA-1	H	OH	H
EA-2	OCH ₃	OH	H
EA-3	CH ₃	OH	H
MOA	CH ₃	R ₂ -O-CH ₂ -O- R ₃	
MOB	CH ₃	OCH ₃	H

Figure 2.

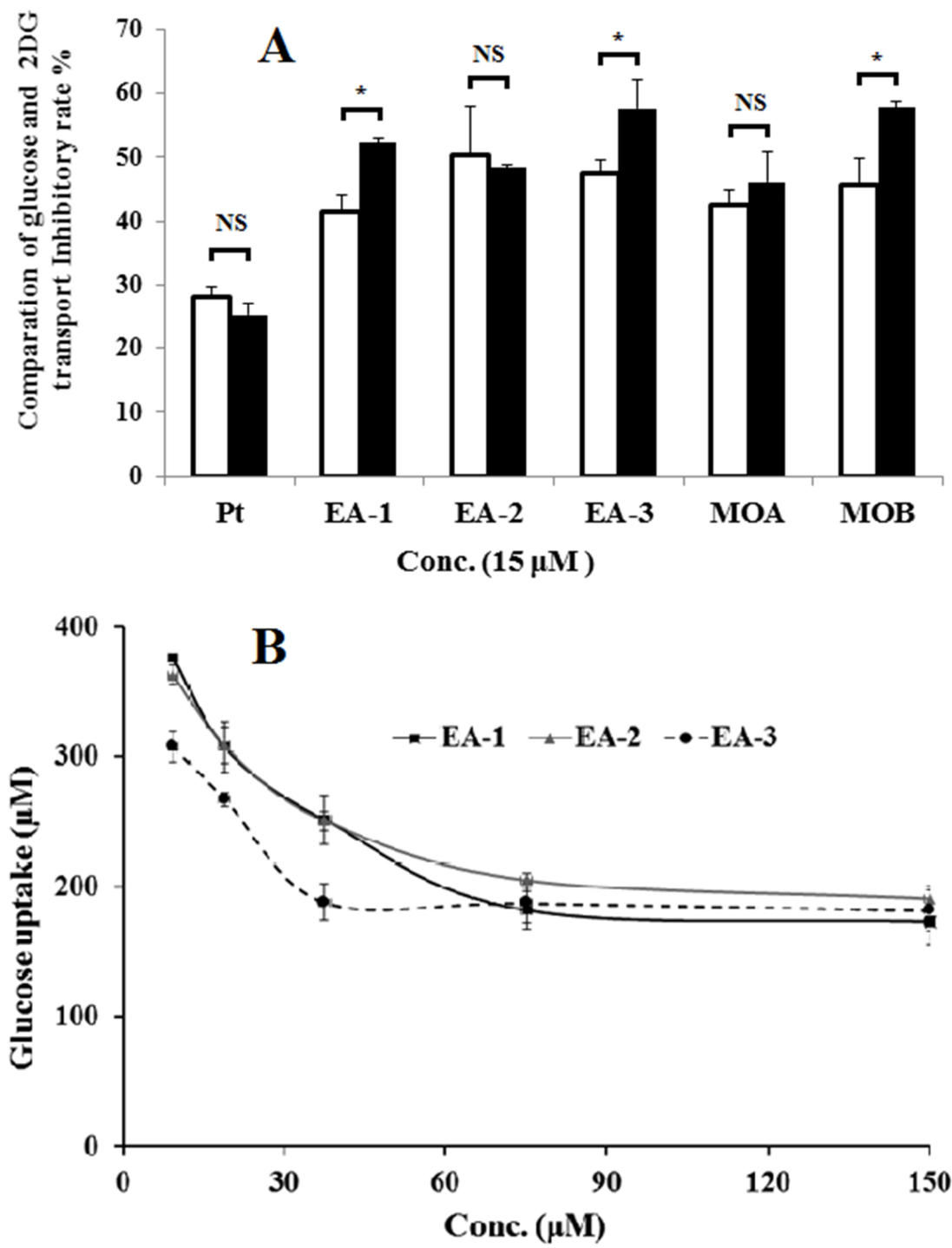


Figure 3.

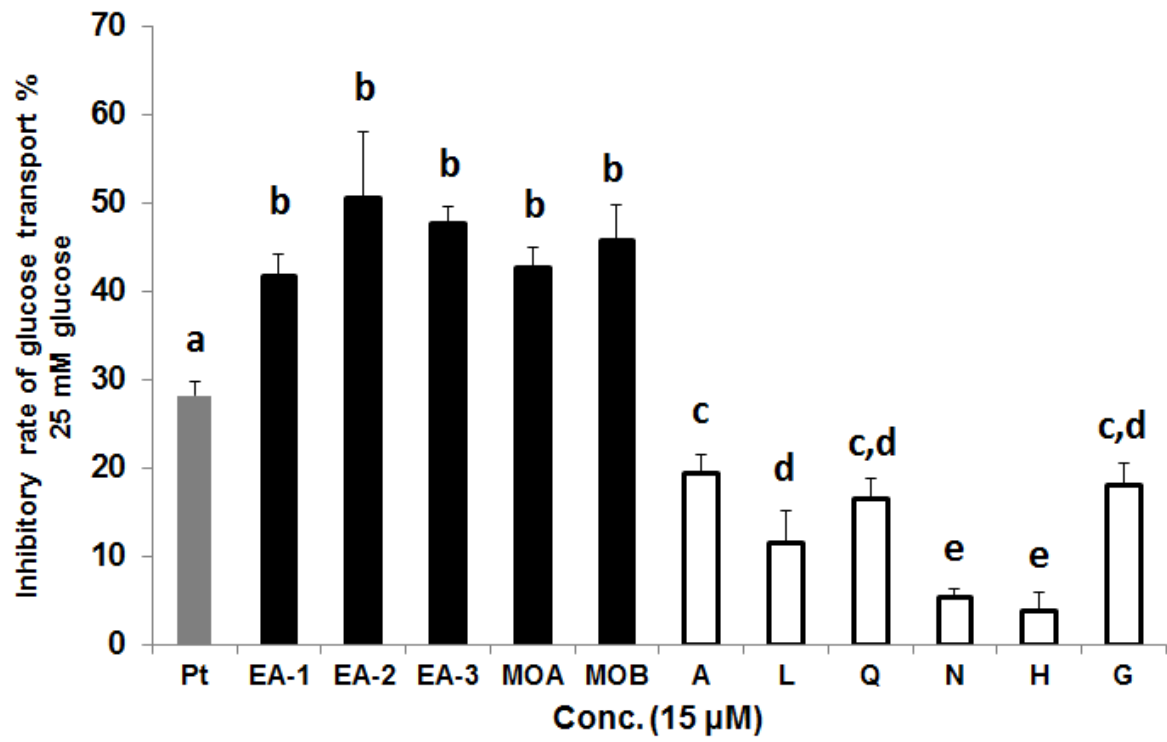
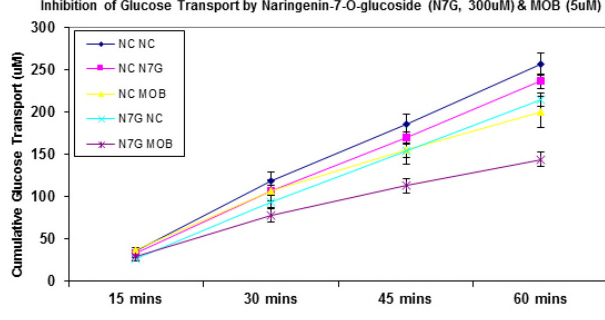
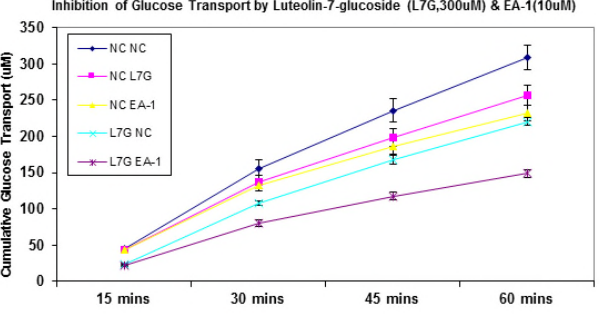
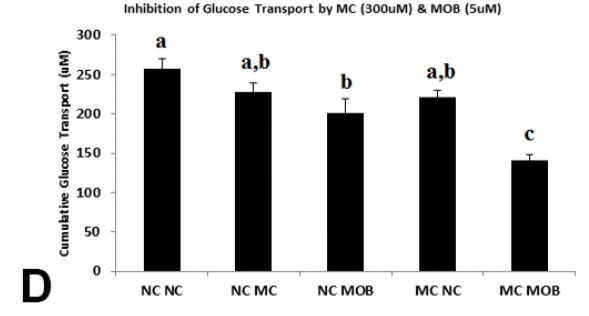
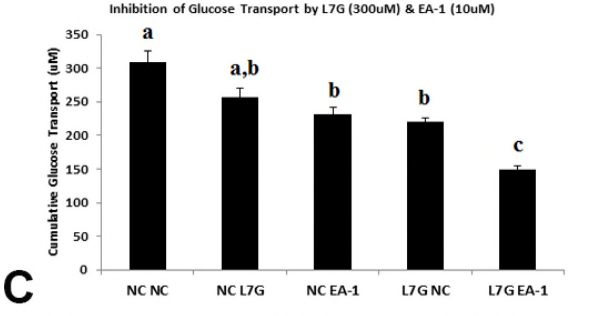
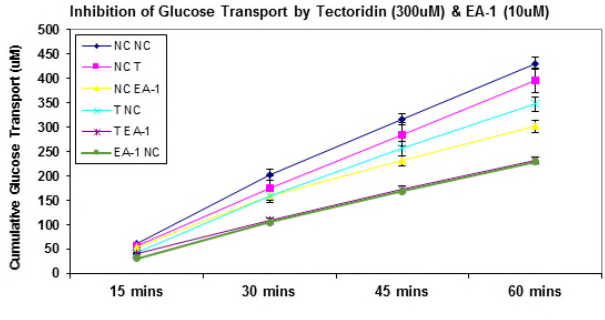
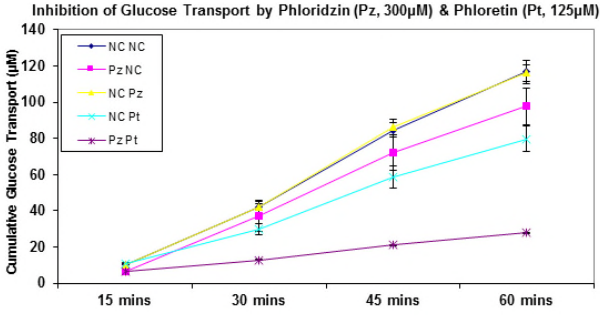
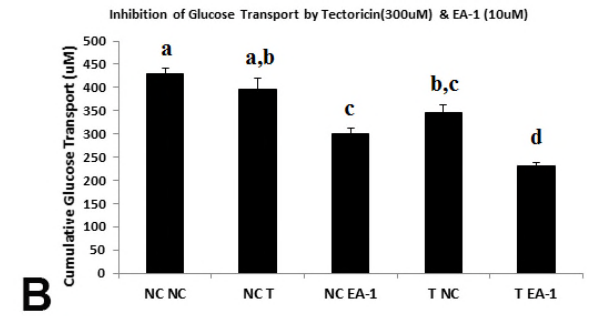
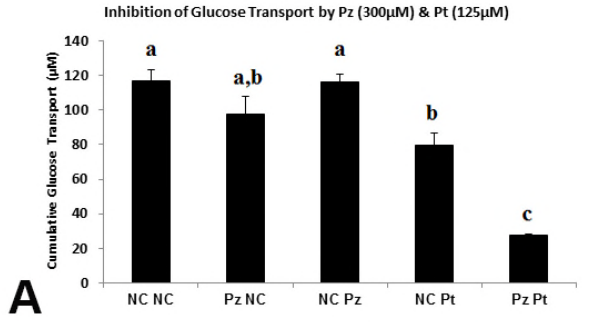


Figure 4.



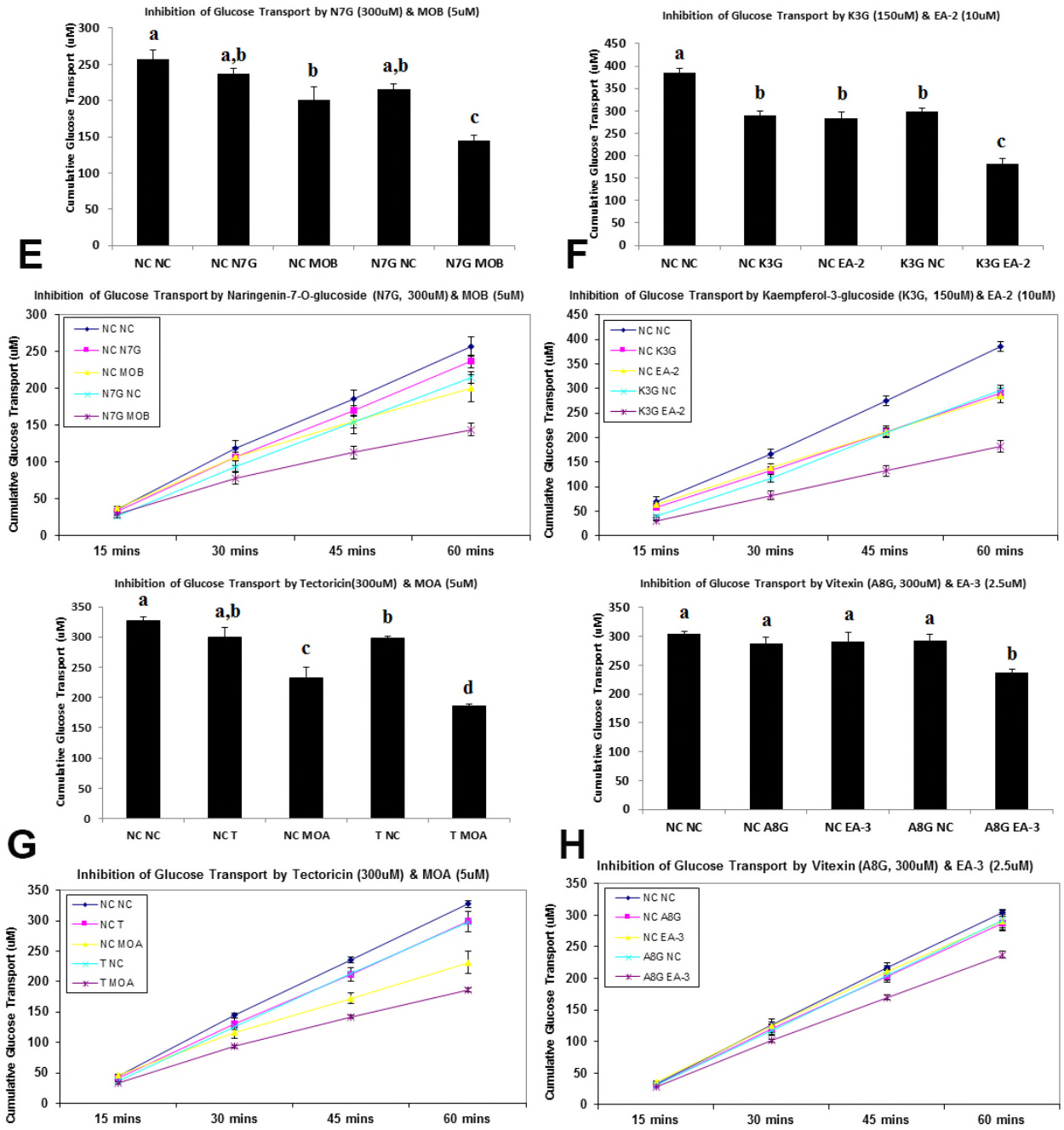
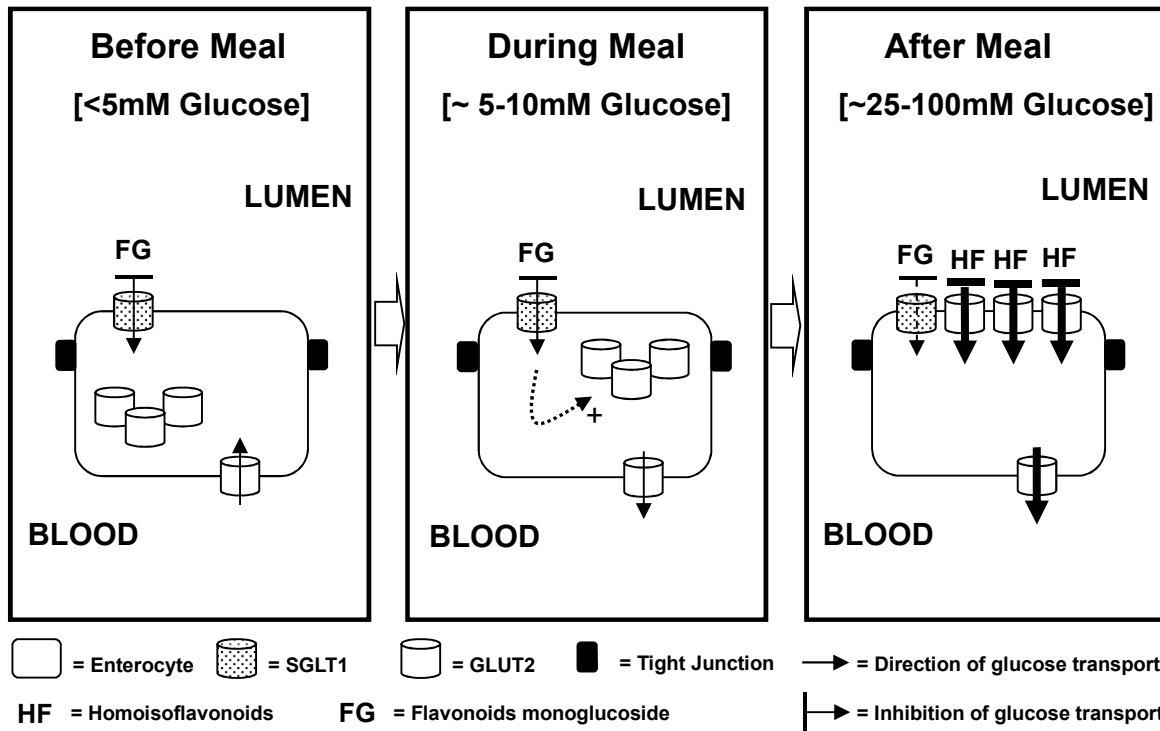


Figure 5.

Graphical Abstract

Homoisoflavonoids, the potent GLUT2 inhibitors, have a synergistic effect with flavonoids monoglucosides (SGLT1 inhibitors)



Supporting Information

Table S1. Glucose transport inhibitory effect and IC₅₀ of homoisoflavonoids and flavonoids

Homoisoflavonoids	IC ₅₀ (μM), 5 mM Glucose	IC ₅₀ (μM), 25 mM Glucose
EA-1	18.5	47.4
EA-2	14.3	54.5
EA-3	8.6	21.1
MOA	Unknown	Unknown
MOB	Unknown	Unknown
Apigenin	122.8	259.5
Luteolin	30.3	62.4
Quercetin	32.9	41.6
Naringenin	176.7	295.1
Hesperetin	121.6	162.7
Genistein	97.77	157.8

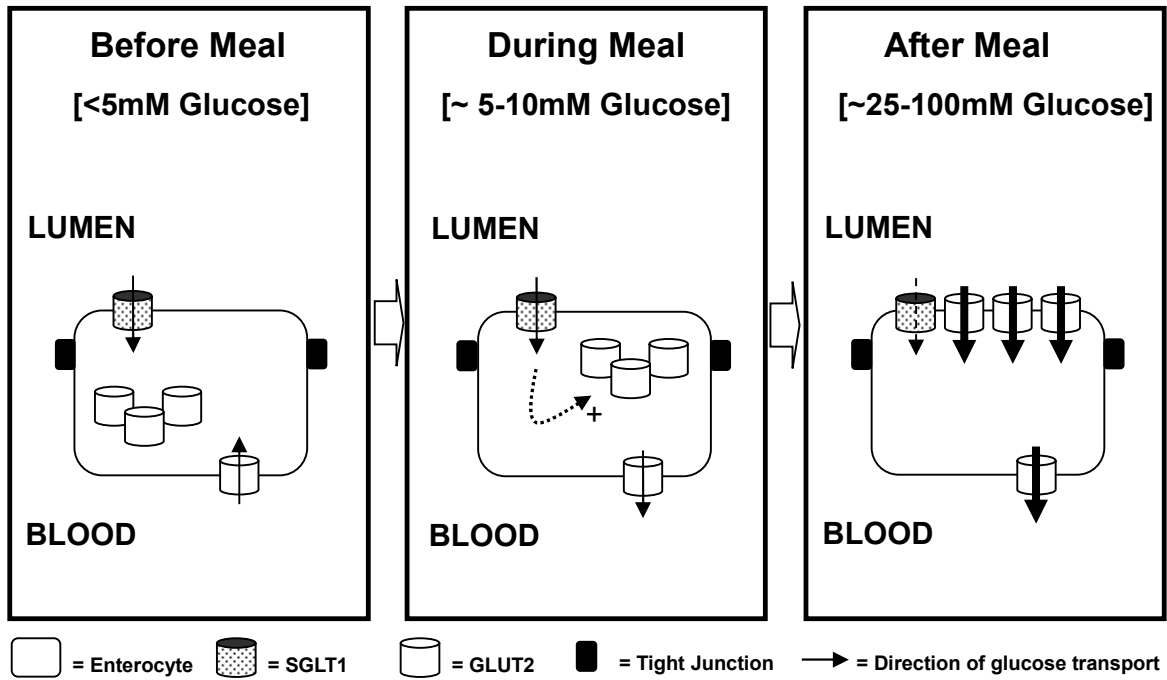


Figure S1. A model of the glucose concentration timeline during a meal

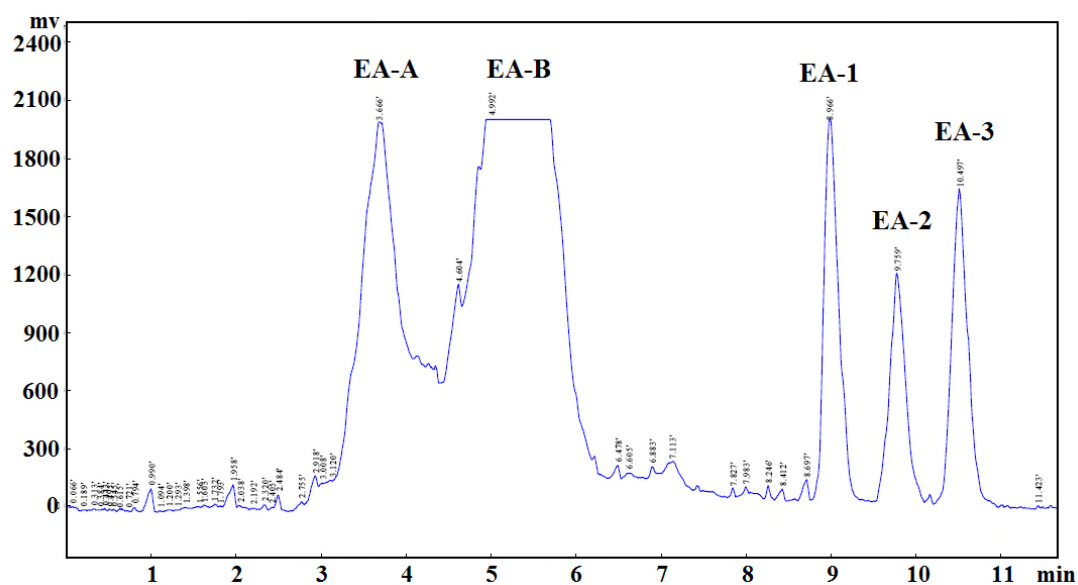


Figure S2a Semi-preparative HPLC chromatogram of the ethyl acetate extract from *P. odoratum* aqueous ethanol extract detected at 280nm.

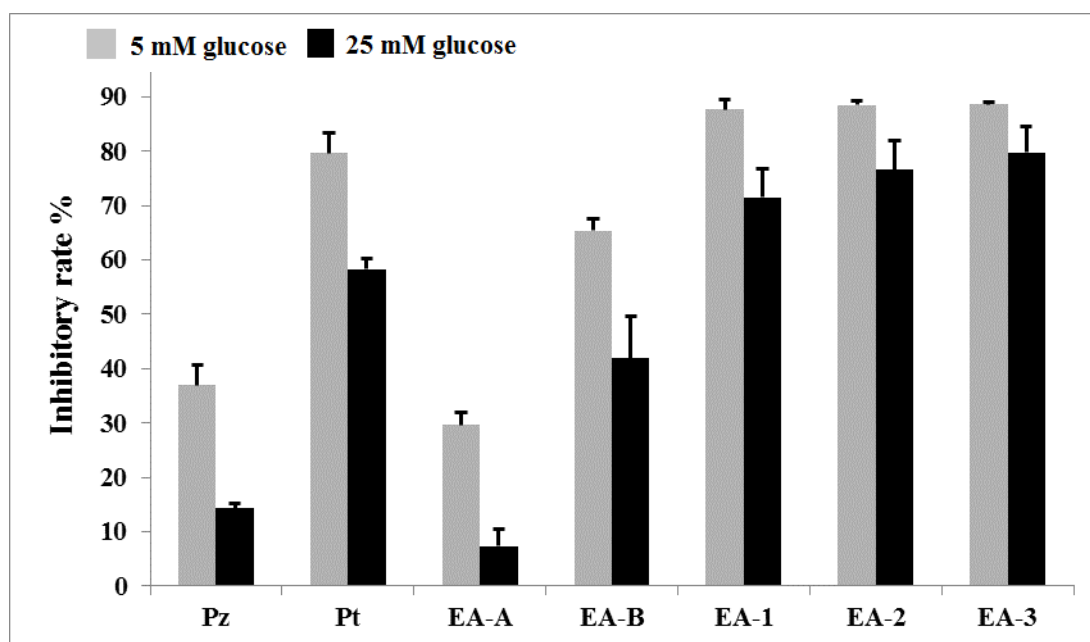


Figure S2b Inhibitory rate of phloridzin (Pz), phloretin (Pt), EA-A, EA-B, EA-1, EA-2, and EA-3 at 5 mM and 25mM glucose transport, respectively. Phloretin was tested at 150 μ M and phloridzin was tested at 300 μ M. The other samples were tested at 200 μ g/mL, EA-A, EA-B, EA-1, EA-2, EA-3 were isolated from EA by Semi-preparative HPLC chromatogram.

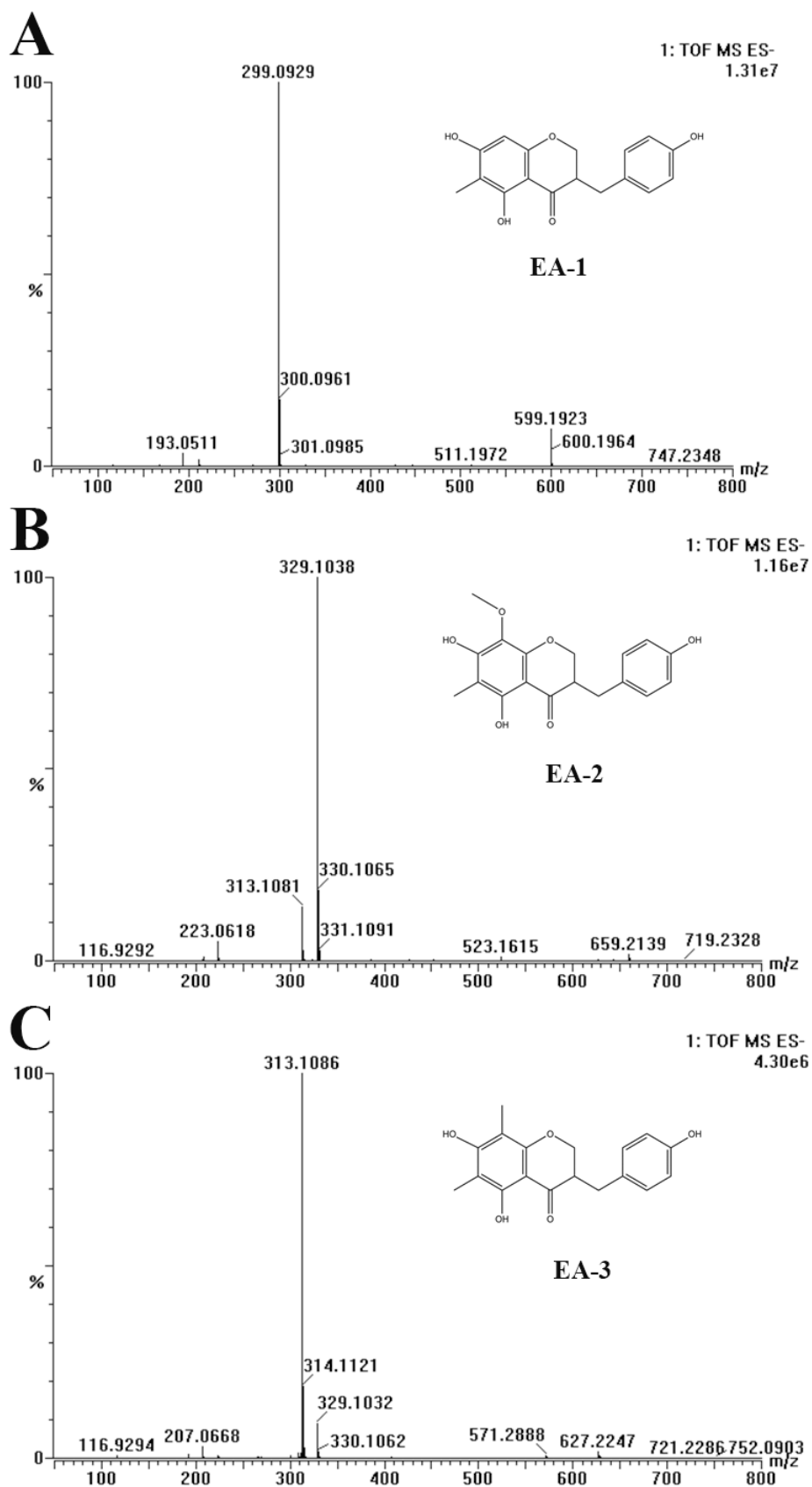


Figure S3 QTOF-MS spectra for EA-1, EA-2 and EA-3.

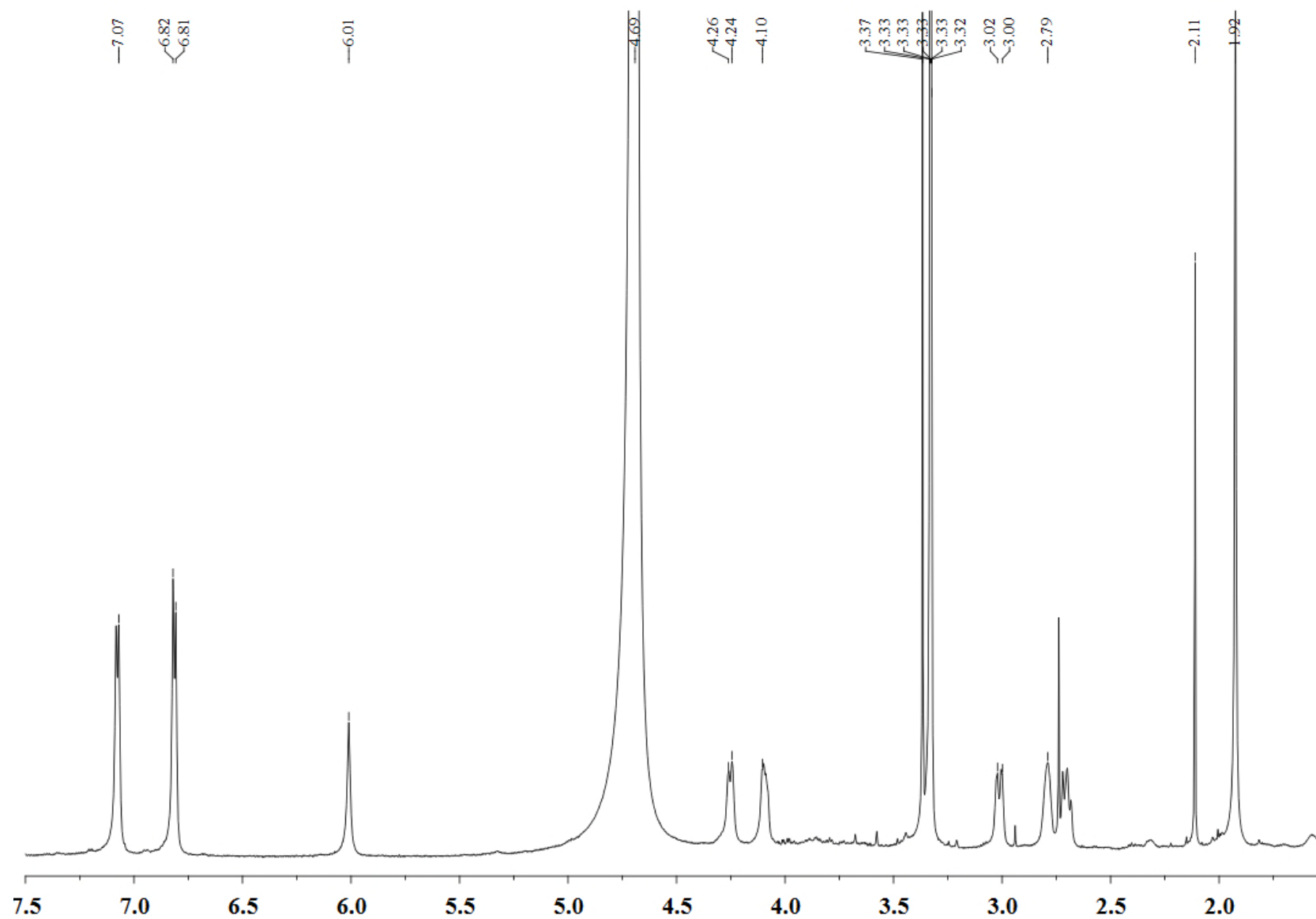


Figure S4 ^1H NMR of EA-1 (ppm, 600MHz, CD_3OD)

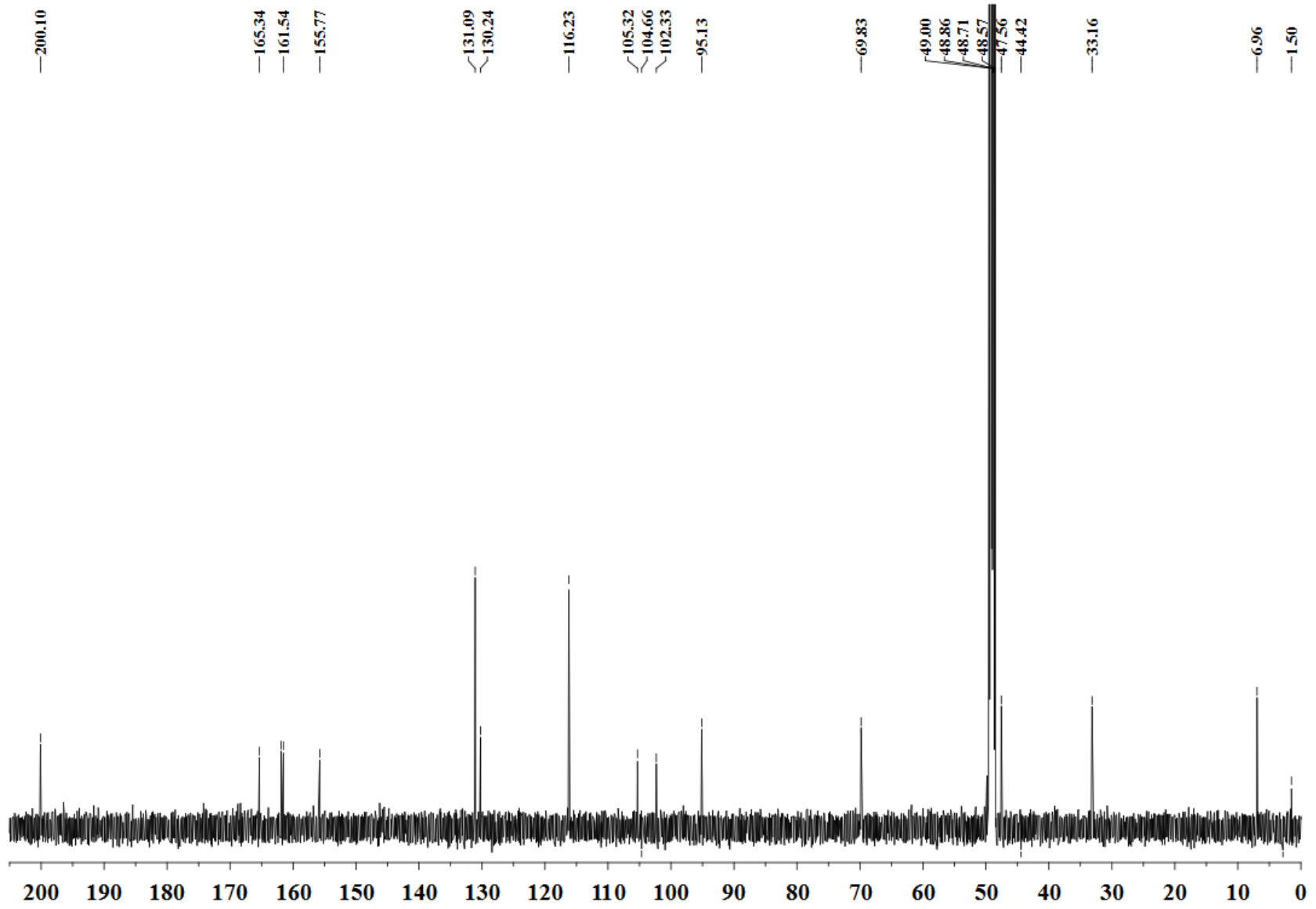


Figure S5 ^{13}C NMR of EA-1 (ppm, 600MHz, CD_3OD)

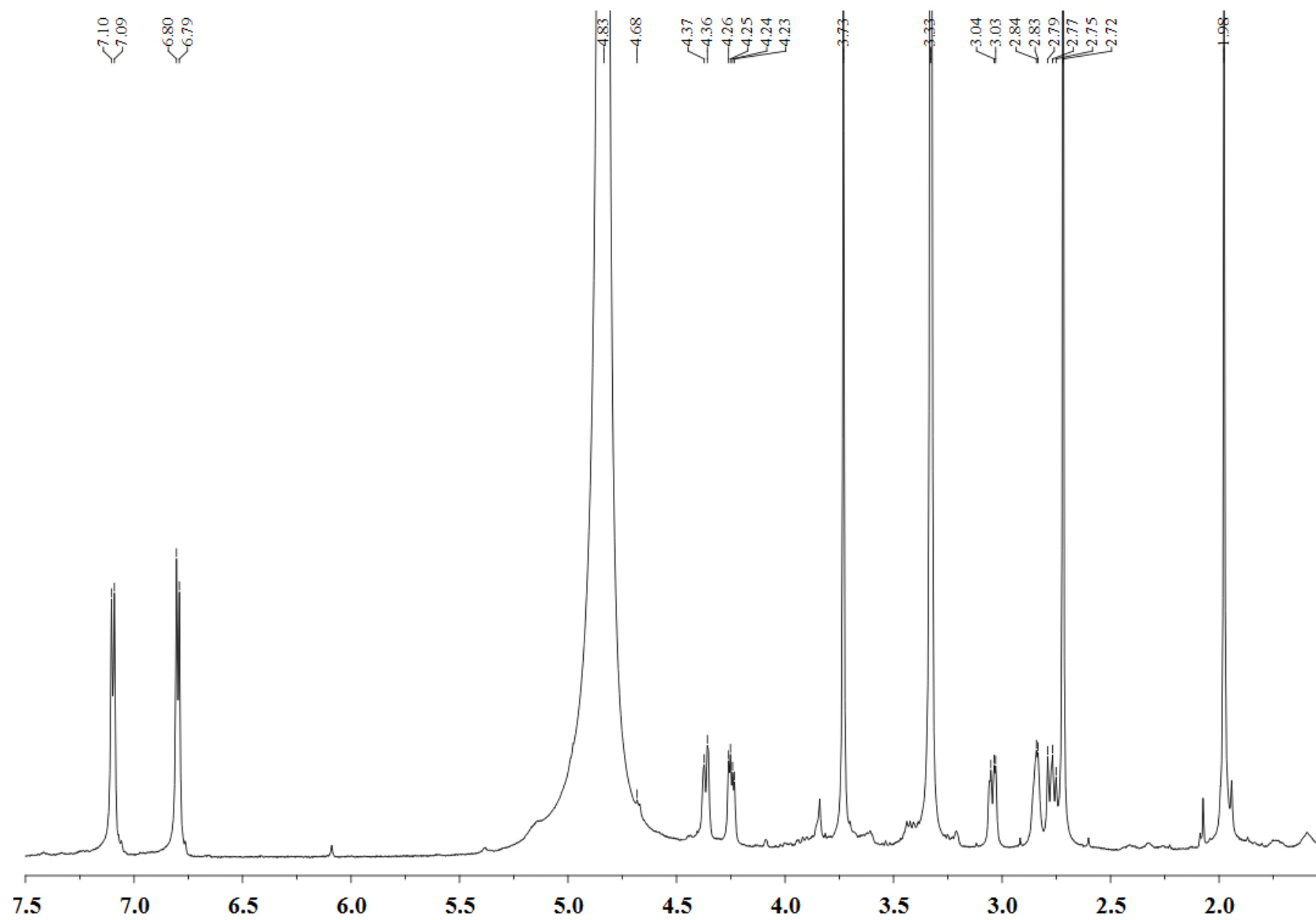


Figure S6 ^1H NMR of EA-2 (ppm, 600MHz, CD_3OD)

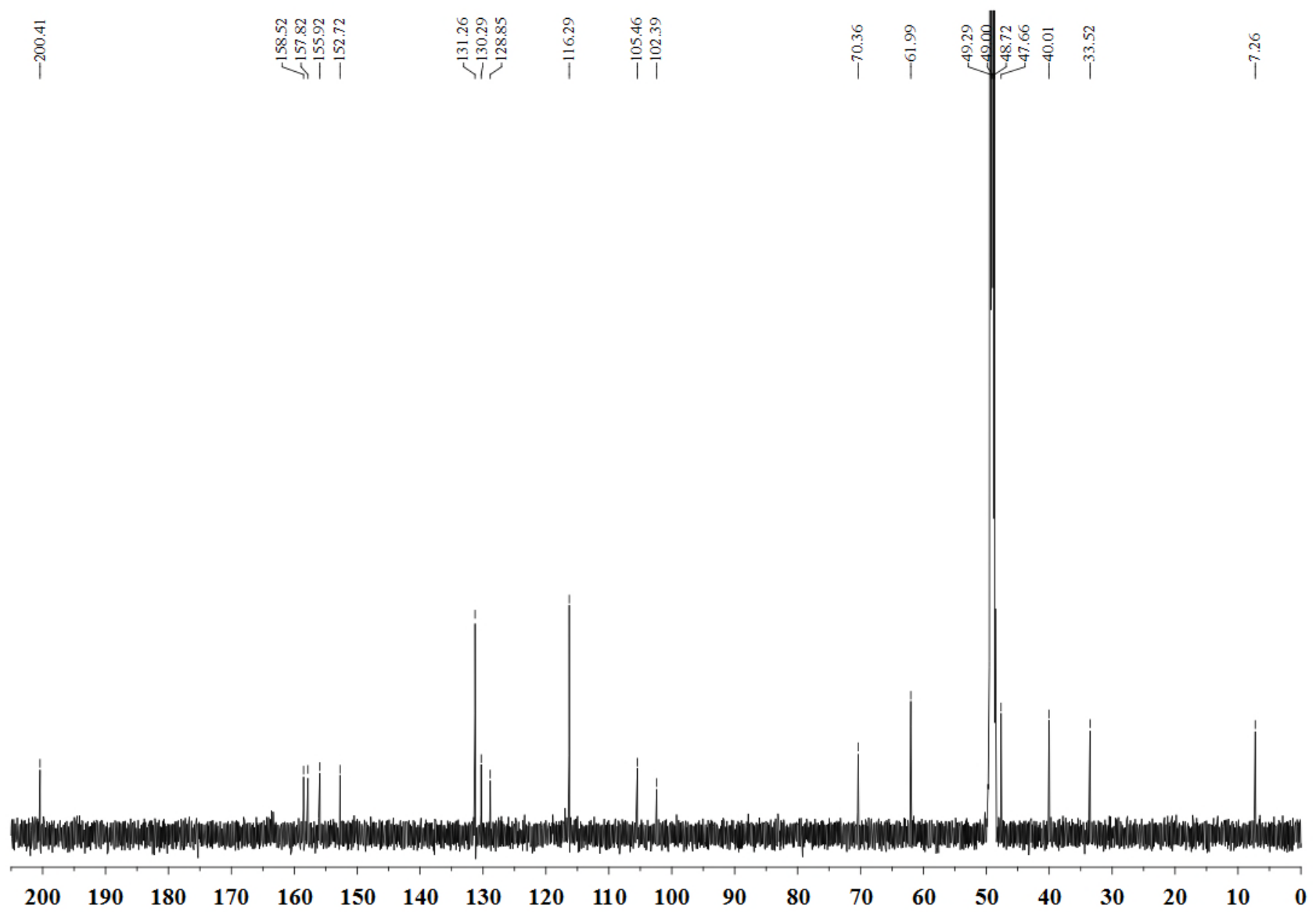


Figure S7 ^{13}C NMR of EA-2 (ppm, 600MHz, CD_3OD)

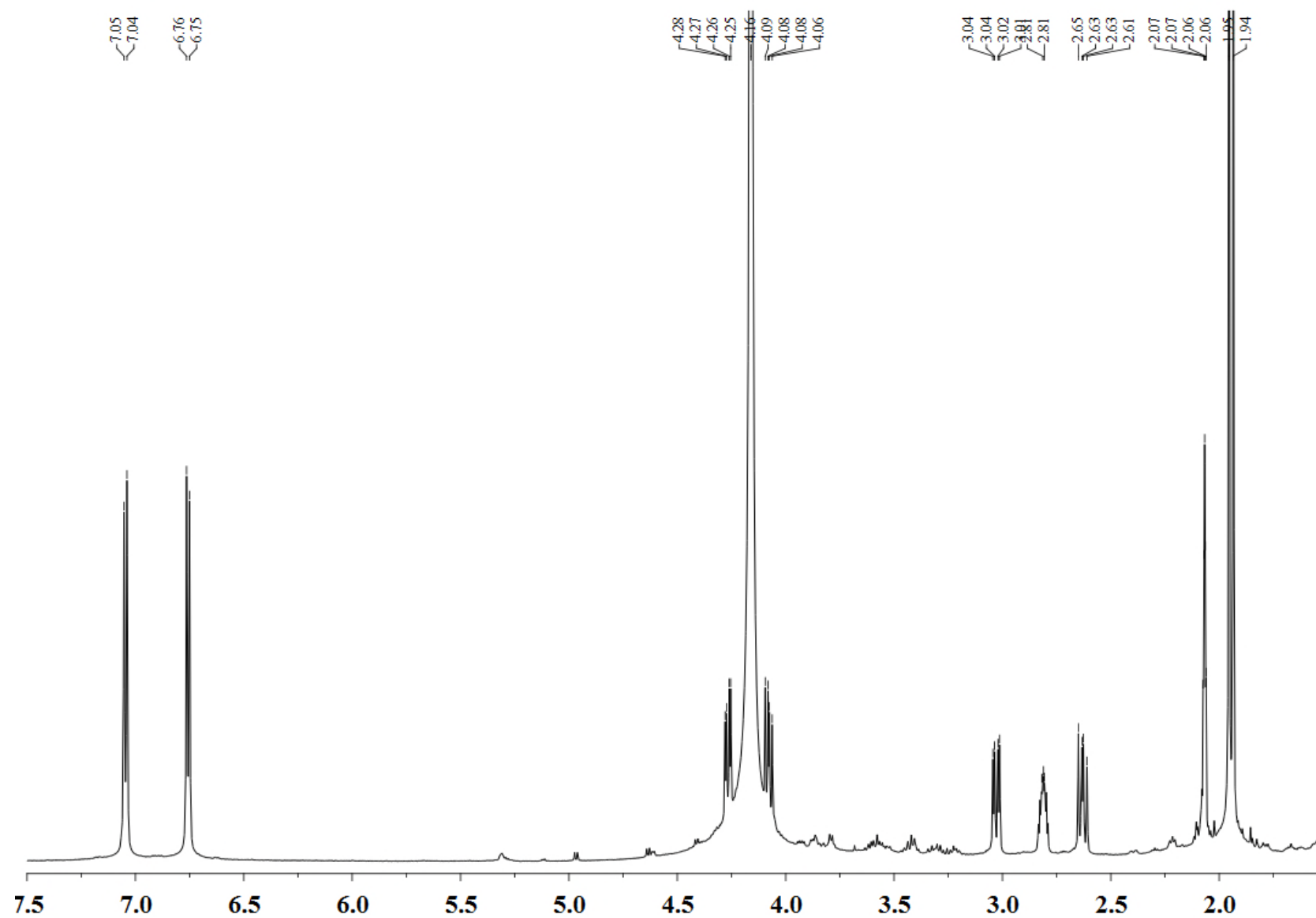


Figure S8 ^1H NMR of EA-3 (ppm, 600MHz, CD_3OD)

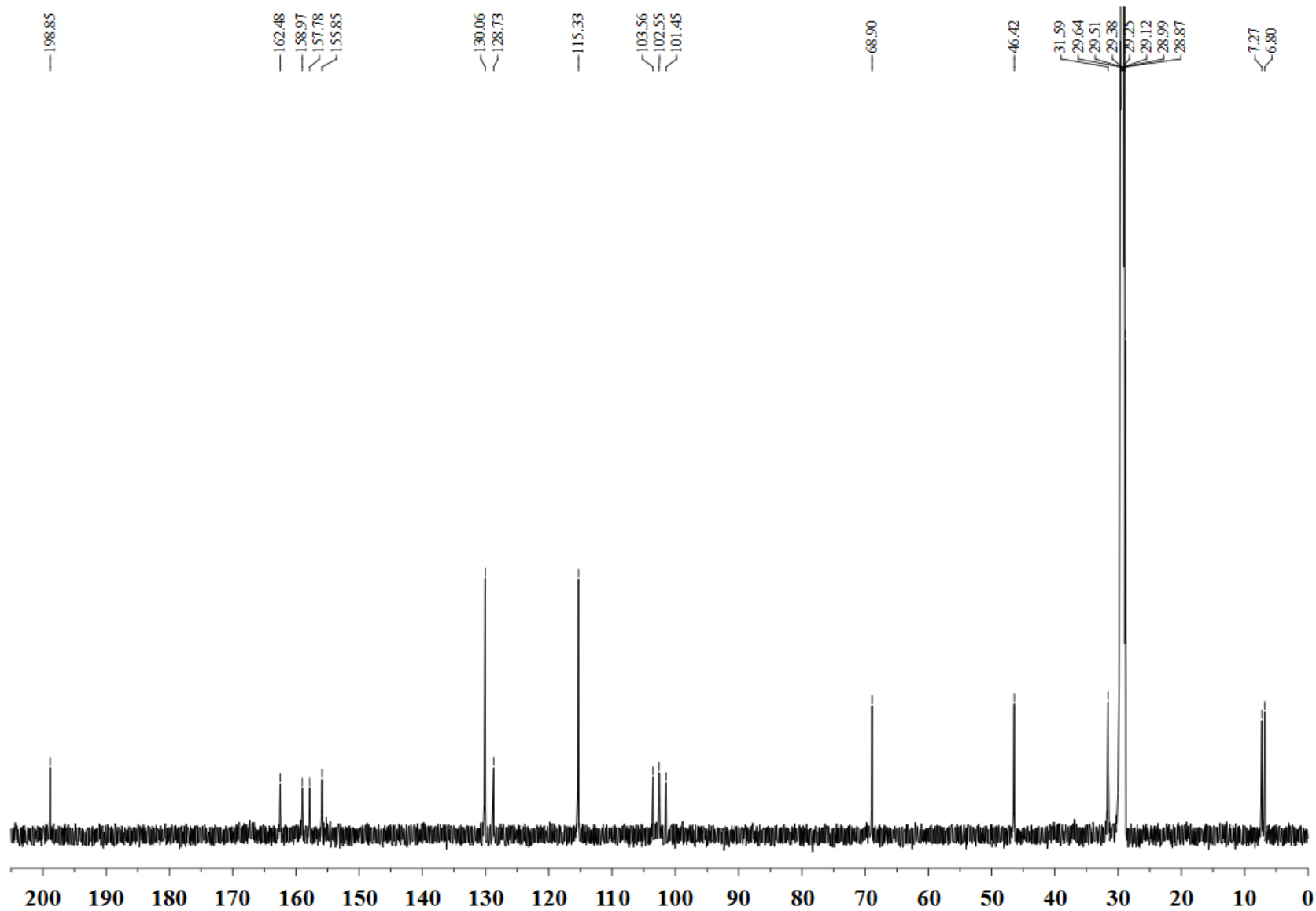


Figure S9 ^{13}C NMR of EA-3 (ppm, 600MHz, CD_3OD)

Peak EA-1:

White yellow powder, C₁₇H₁₆O₅, High Res. ESI-MS (40V): 299.0940 [M-H]⁻, 193.0511, 178.0282, 165.0555, 149.0612, 135.0087, 121.0296, 107.0498, 95.0141, 79.0190, 69.0346, 55.0193 (**Figure S3A**); ¹H-NMR (600MHz, CD₃OH, **Figure S4**): 1.92 (3H, s, 6-CH₃), 2.79 (1H, m, H-3), 2.65 (1H, dd, H-9a), 3.00 (1H, dd, H-9b), 4.10 (1H, dd, H-2a), 4.24 (1H, dd, H-2b), 6.01 (1H, s, H-8), 6.81 (1H, d, H-3',5'), 7.07 (1H, d, H-20,60), 12.35 (1 H, s, 5-OH). ¹³C NMR (600MHz, CD₃OH, **Figure S5**): 6.96 (C-6-CH₃), 33.16 (C-9), 47.56 (C-3), 69.83 (C-2), 95.13 (C-8), 102.33 (C-4a), 105.32 (C-6), 116.23 (C-3', 5'), 130.24 (C-2', 6'), 155.77 (C-4'), 161.54(C-5, 8a), 165.34 (C-7), 200.10 (C-4). EA-1 was assigned as 5, 7-dihydroxy-3-(4'-10 hydroxybenzyl)-6-methylchroman-4-one, which was a sappanin-type homoisoflavonoid.

Peak EA-2:

Pale yellow powder, C₁₈H₁₈O₆, High Res. ESI-MS (40V): 329.1028 [M-H]⁻, 208.0380, 193.0136, 180.0413, 165.0221, 152.0480, 137.0245, 124.0168, 109.0311, 96.0217, 79.0197 (**Figure S3B**). ¹H-NMR (600MHz, CD₃OH, **Figure S6**): 1.99 (3H, s, 6-CH₃), 2.81 (1H, m, H-3), 2.66 (1H, dd, H-9a), 3.11 (1H, dd, H-9b), 3.74 (3H, s, 8-OCH₃), 4.14 (1H, dd, H-2a), 4.30 (1H, dd, H-2b), 6.74 (1H, d, H-3', 5'), 7.05 (1H, d, H-2', 6'). 12.22 (1 H, s, 5-OH). ¹³C NMR (600MHz, CD₃OH, **Figure S7**): 7.24 (C-6-CH₃), 33.23 (C-9), 48.17 (C-3), 61.57 (C-8-CH₃), 70.39 (C-2), 102.38 (C-4a), 105.23 (C-6), 116.39 (C-3', 5'), 129.08 (C-8), 130.13 (C-1'), 131.14 (C-2', 6'), 152.92 (C-8a), 157.17 (C-4'), 158.60 (C-7), 158.96 (C-5), 199.60 (C-4). EA-2 was assigned as (5,7-dihydroxy-3-(4'-hydroxybenzyl)-6-methyl-8-methoxychroman-4-one), which was a sappanin-type homoisoflavonoid.

Peak EA-3:

Pale yellow powder, C₁₈H₁₈O₆, High Res. ESI-MS (40V): 313.1094 [M-1]⁻, 298.6669, 207.0671, 192.0433, 179.0791, 163.0404, 149.0257, 135.0455, 129.0570, 123.0460, 107.0512, 95.0156, 83.0521, 77.0409, 69.0363, 57.0362 (**Figure S3C**). ¹H NMR (600MHz, CD₃OH, **Figure S8**): 1.94 (3H, s, 8-CH₃), 2.06 (3H, s, 6-CH₃), 2.61 (1H, dd, H-9a), 2.83 (1 H, m, H-3), 3.04 (1H, dd, H-9b), 4.09 (1H, dd, H-2a), 4.28 (1H, dd, H-2b), 6.75 (1H, d, H-3',5'), 7.04 (1H, d, H-2',6'). ¹³C NMR (600MHz, CD₃OH, **Figure S9**): 6.80 (C-8-CH₃), 7.27 (C-6-CH₃), 31.59 (C-9), 46.42 (C-3), 68.90 (C-2), 101.45 (C-4a), 102.55 (C-8), 103.56 (C-6), 115.33 (C-3', 5'), 128.73 (C-1'), 130.06 (C-2', 6'), 155.85 (C-8a), 157.78 (C-4'), 158.97 (C-7), 162.48 (C-5), 198.85 (C-4). EA-3 was assigned as (5, 7-dihydroxy-3-(4'-hydroxybenzyl)-6, 8-dimethylchroman-4-one), which was a sappanin-type homoisoflavonoid.

Homoisoflavonoids are potent glucose transporter 2 (GLUT 2) inhibitors—a potential mechanism for the glucose-lowering properties of *Polygonatum odoratum*

Wang, Huijun

2018-03-13

Attribution-NonCommercial 4.0 International

Wang H, Fowler MI, Messenger DJ, et al., (2018) Homoisoflavonoids are potent glucose transporter 2 (GLUT 2) inhibitors—a potential mechanism for the glucose-lowering properties of *Polygonatum odoratum*. *Journal of Agricultural and Food Chemistry*, Volume 66, Issue 12, 2018, pp. 3137-3145

<http://dx.doi.org/10.1021/acs.jafc.8b00107>

Downloaded from CERES Research Repository, Cranfield University