

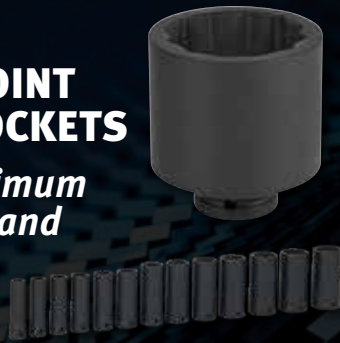
INNOVATION AT WORK

NEW!

1/2" DRIVE 12 POINT DEEP IMPACT SOCKETS

Designed for Maximum engagement on 6 and 12 point fasteners

See Page 9



TRADE KITS

Get your work done faster, easier and safer

See Page 7



NEW!

REVERSIBLE RATCHETING COMBINATION WRENCHES

Wrench handle is sized for optimum comfort and balance for increased leverage, especially in tight spaces

See Page 9



THE WORLDS LARGEST MANUFACTURER OF **PROFESSIONAL TORQUE WRENCHES**



COMPUTORQ SG ELECTRONIC TORQUE WRENCH

Torque in less time, with more accuracy and control

See Page 2



CDI TORQUE PRODUCTS® DIGITAL TORQUE TESTER™ (DTT)

Test the health of your torque wrenches anywhere with the digital torque tester.

Utilizing the testing protocol and standards developed by the American Society of Mechanical Engineers (ASME) The **Digital Torque Tester™ (DTT)** is designed to be an affordable torque tester that can be mounted on a wall or used in a bench-top vise to allow the operator to conveniently test torque wrenches and torque screwdrivers. It features an easy to use touch pad screen to capture peak torque values during a test in real time, and download stored torque data to a PC. All DTT torque testers are sold in a kit with the tester, carrying case and AC/DC power supply.

Product Code	Female Drive	Range English	Range cNm, Nm	Range, kgcm	List Price:	Sale Price:
10002-I-DTT	3/8 in.	100 - 1000 in.lb.	11.3 - 113 Nm	115 - 1152 cmkg	\$2,895.00	\$1,240.71
1001-I-DTT	1/4 in.	10 - 100 in.lb.	113 - 1113 cNm	11.5 - 115 cmkg	\$2,450.00	\$1,050.00
1001-O-DTT	1/4 in.	10 - 100 in.oz.	7.06 - 70.6 cNm	.720 - 7.20 cmkg	\$2,620.00	\$1,122.86
2502-I-DTT	3/8 in.	25 - 250 in.lb.	2.82 - 28.25 Nm	28.80 - 288.0 cmkg	\$2,620.00	\$1,122.86
2503-F-DTT	1/2 in.**	25 - 250 ft.lb.	33.8 - 338 Nm	3.45 - 34.5 kgm	\$2,895.00	\$1,240.71
4002-I-DTT	3/8 in.	40 - 400 in.lb.	4.52 - 45.2 Nm	46 - 460 cmkg	\$2,620.00	\$1,122.86
501-I-DTT	1/4 in.	5 - 50 in.lb.	56 - 565 cNm	5.76 - 57.60 cmkg	\$2,620.00	\$1,122.86
6004-F-DTT	3/4 in.	60 - 600 ft.lb.	81.3 - 813 Nm	8.30 - 83 kgm	\$3,110.00	\$1,332.86
8001-O-DTT*	1/4 in.	20 - 800 in.oz.	14.1 - 565 cNm	1.44 - 57.6 cmkg	\$2,510.00	\$1,075.71

Accuracy: ± 0.50% 10% to 100% CW & CCW of indicated test value @ 25° C
 *Accuracy: ± 1% CW & CCW from 2-1/2% to 100% of full scale. New for Torque Screwdriver.
 Units of Measure: Nm, kgcm, ft.lb., in.lb., in.oz., kgm, cNm
 Operation Modes: TRACK, PEAK, FIRST PEAK
 Operating Temperature: 10 to 32° C (50 to 90° F)
 Storage Temperature: -20 to 50° C (-2 to 122° F)
 Humidity: 85% Relative Humidity @ 21° C (70° F)
 Power Supply: Included 9-volt A/C D/C adapter. 6 AA batteries included.
 Data Storage/Recall: Memory Capacity - 500 Records (Complete Check Mode Only)
 Dimensions: W - 10" x H - 16" x D - 2.5"
 Weight: (Tester Only) - 10.7 lbs., (with Carrying Case) - 17.4 lbs.
 ** Includes 1/2" - 3/8" Reducer



CDI TORQUE PRODUCTS® COMPUTORQ SG-STEEL GRIP ELECTRONIC TORQUE WRENCH

CONVENIENCE & CONTROL

COMPUTORQ SG TORQUE WRENCHES are fully programmable for reliable, consistent, and repeatable torque application. Every model features a large, backlit LCD screen for better visibility in a variety of working conditions and a high capacity memory for storage of 1,500 readings.

Product Code	2401CASG	1002CASG	2503CASG	6004CASG
Square Drive	1/4"	3/8"	1/2"	3/4"
Head Type	Sealed Flex Head	Sealed Flex Head	Sealed Flex Head	Sealed Fixed Head
Torque Range, in lb	12-240	60-1200	150-3000	360-7200
Torque Range, ft lb	1-20	5-100	12.5-250	30-600
Torque Range, Nm	1.4-27.2	6.8-135.6	16.9-339	40.7-813.5
Torque Accuracy	+/- 2% Clockwise; +/- 3% Counterclock-wise	+/- 2% Clockwise; +/- 3% Counterclock-wise	+/- 2% Clockwise; +/- 3% Counterclock-wise	+/- 2% Clockwise; +/- 3% Counterclock-wise
Angle Range	0-360 Degrees	0-360 degrees	0-360 degrees	0-360 Degrees
Storage Capacity	1,500 Readings	1,500 Readings	1,500 Readings	1,500 Readings
Number of Presets	50	50	50	50
All Steel Body	Yes	Yes	Yes	Yes
Batteries Included	3 x AAA Lithium	3 x AA Lithium	3 x AA Lithium	3 x AA Lithium
Storage Case Included	Yes	Yes	Yes	Yes
Ratchet Service Kit	0514-0029-01RK	0514-0030-01RK	0514-0031-01RK	9610-0112RK
Head Depth (A)	3/4" (19.3 mm)	1-1/32" (26.19 mm)	1-3/10" (33.02 mm)	2-4/5" (71.12 mm)
Head Width (B)	15/16" (23.8 mm)	1-7/10" (43.18 mm)	1-1/2" (63.5 mm)	2-3/5" (66.04 mm)
Warranty	1-Year	1-Year	1-Year	1-Year
List Price:	\$1,175.00	\$1,405.00	\$1,580.00	\$3,265.00
Sale Price:	\$503.57	\$602.14	\$677.14	\$1,399.29



All models comply with ISO®-6789-2003 and ASME® B107.300-2010 (B107.28) Standards for Electronic Torque Instruments
 *U.S. and Foreign Patents Pending



ELECTRONIC DIAL TORQUE WRENCH

The new **Electronic Dial (ED)** torque wrench features solid-state electronics for accurate torque application and measurement. ED's design provides easy set-up and usage. There is no need to look directly at the digital readout as the wrench features 3 indicating lights and an audible buzzer.

The ED wrench has unsurpassed reliability and durability -- 21st century technology in a simple, easy to read digital torque wrench.



ELECTRONIC DIAL TORQUE WRENCH

Product Code	Drive	In. Lb.	Ft. Lb.	Nm	Kg. Cm.	Length In. (mm)	Wt. Lbs. (kgs)	List Price:	Sale Price:
501ED-CDI	1/4"	5 - 50	.42 - 4.17	.56 - 5.65	57 - 57.61	11.5 (292)	1.25 (.57)	\$1,110.00	\$475.71
2502ED-CDI	3/8"	25 - 250	2.08 - 20.83	2.82 - 28.25	28 - 280.03	14.5 (368)	1.51 (.68)	\$1,030.75	\$441.76
6002ED-CDI	3/4"	60 - 600	5 - 50	6.79 - 67.79	69 - 691.27	14.5 (368)	1.51 (.68)	\$1,050.00	\$450.00

Features

- 4 units of measure...ft lb, in lb, Nm, kg.cm.
- Accuracy: ± 2% CW & ± 3% CCW - of indicated value from 20% to 100% of full scale
- 3 step LED visual signal system
YELLOW LIGHT = approaching target torque
GREEN LIGHT = target torque reached
RED LIGHT = over torque indicator
- Audible tone when desired torque is reached
- Alarm tone sounds if wrench is overtorqued
- Ergonomically designed wrench body
- Display can be turned 180 degrees to allow left hand usage
- Battery cover designed to be aviation FOD proof
- Holds "peak" torque reading for 10 seconds
- Constructed of special Capron® material for long life and durability
- Resistant to the majority of chemicals used in industrial environments
- Wrench can be hung on tool board
- Bar graph displays orientation of torque application (left or right hand)
- Uses standard 9 volt alkaline battery
- N.I.S.T. traceable certificate of calibration included
- Meets or exceeds ASME B107.28 - 2005



CDI TORQUE PRODUCTS QUICK SET SPLIT BEAM TORQUE WRENCHES

Product Code	Drive Size	Range	Increments	Length (inches)	Ratchet	List Price:	Sale Price:
502TQFR	3/8"	120-600 in. lbs.	10.0 in. lbs.	17 1/8"	Flex-Head	\$430.00	\$184.29
1002TQFR	3/8"	20-100 ft. lbs.	2.0 ft. lbs.	17 1/8"	Flex-Head	\$430.00	\$184.29
2503TQFR	1/2"	40-250 ft. lbs.	5.0 ft. lbs.	21 1/16"	Flex-Head	\$570.00	\$244.29
4004TQR	3/4"	130-400 ft. lbs.	10.0 ft. lbs.	38 1/8"	Fixed-Head	\$1,160.00	\$497.14
6004TQR	3/4"	200-600 ft. lbs.	10.0 ft. lbs.	48 1/2"	Fixed-Head	\$1,210.00	\$518.57



See complete product listing at snapon.com/industrialbrands



HEAVY DUTY SERVICE CARTS

Heavy Duty Industrial Cart

Product Code	Description	List Price:	Sale Price:
50726	4 Drawer Heavy Duty Industrial Cart	\$1,261.95	\$540.84

Service Carts Overall Dimensions

Product Code	Width (Inches)	Depth (Inches)	Height (Inches)
50726	30	20 1/2	40 1/2

Drawer Sizes

Number	Width (inches)	Depth (inches)	Height (inches)
2	11	19 1/8	3
1	25	16 1/4	3
1	25	16 1/4	6 5/8

Features

- Heavy duty steel construction
- High gloss power coat scratch resistant paint
- Quality swivel casters on all units
- Drawer units have 45 mm "secure latch" ball bearing slides



50726



SERVICE CARTS

Easy and convenient access to tools when and where you need them.

Product Code	Description
50721	2 Drawer with Lockable Lid & Tray, Black
50722	2 Shelves, Red
50723	2 Shelves with Locking Drawer, Red
50724	4 Drawers with Lid, Rack and Shelf, Red

Service Cart Overall Dimensions

Product Code	Width (inches)	Depth (inches)	Height (inches)	List Price:	Sale Price:
50721	45 1/2 with a lid	16 1/2	36	\$1,089.40	\$466.89
50722	30	17	36 7/32	\$260.65	\$111.71
50723	30	17	36 7/32	\$401.85	\$172.23
50724	41	17	36 7/32	\$883.70	\$378.73

Features

- High gloss powder coat paint is scratch & chemical resistant
- Storage drawers for frequently used tools
- Heavy duty undercarriage to help support bottom tray load
- 18 gauge heavy duty steel
- 4" x 1" swivel casters



50721



50723



50722



50724

WILLIAMS® JOB SITE BOXES

Designed for the toughest outdoor work environments

Product Code	Description	List Price:	Sale Price:
50950	32" W X 19" D X 17.5" H	-\$448.20	\$192.09
50951	42" W X 20" D X 23.4" H	-\$644.50	\$276.21
50952	48" W X 24" D X 27.5" H	-\$840.80	\$360.34
50953	48" W X 30" D X 33.5" H	-\$1,060.45	\$454.49
50954	48" W X 30" D X 28.375" H	-\$1,100.00	\$471.43

Features

- Casters weight capacity is 3500 lbs
- Tough industrial powder coating finish
- Heavy 16 gauge steel construction with 12 gauge feet
- Recessed and concealed locking area protects padlock for ultimate security against drills and bolt cutter
- Fully welded seams provide maximum strength
- Recessed side handles for easy transportation
- Reinforced overlapping lid provides protection from weather and forced entry
- Heavy duty industrial lid stays prevents accidental closure
- Tread plate design for rugged durability



50950



WILLIAMS® HEAVY-DUTY ROAD BOXES - 26" AND 34"

Designed with extra heavy-duty features for mobile use in the factory or on the road in service trucks.

Product Code	Description	List Price:	Sale Price:
50946B	26" W X 17.875" D X 22" H	-\$1,093.55	\$468.67
50946RED	26" W X 17.875" D X 22" H	-\$1,093.55	\$468.67
50947B	34" W X 17.875" D X 23" H	-\$1,424.00	\$610.29

Features

- Drop front panel has neoprene water & dust resistant seal.
- Shielded hinges for long life in harsh environments.
- Cushion feet pads attached to bottom for protection.
- Extra heavy duty metal with 75 lb load rating per drawer.
- Secure key internal locking system.
- 50946RED includes a padlock eye with slotted hasp provides security



50946B



50946RED

MODULAR INDUSTRIAL STORAGE

UNPRECEDENTED STORAGE OPTIONS TO ACCOMMODATE ANY STORAGE NEED

The Williams® Modular Industrial Storage Program is designed, engineered and built specifically for industrial settings, processes, and systems. Heavy-duty steel construction, innovative safety and security features, and workplace-specific configurations provide for customizable, scalable storage that meets even the most complex needs.

WORK SURFACES

Available in a variety of shapes and materials.



Color Options

■	Red: Standard
■	Black: B
■	Blue: BL



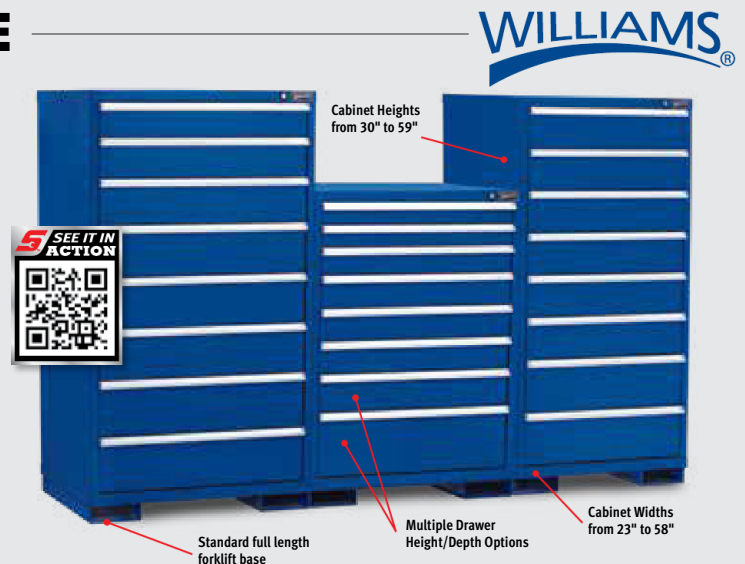
100% View
Drawer Extension



Full-Width Aluminum
Handles with Safety
Overlap and 45° Angle



SWP Plus Series -
32-1/2" Wide



Ask your Snap-on Industrial Brands Representative for full options & pricing!

See complete product listing at snapon.com/industrialbrands



DROP PREVENTION A Critical Challenge... SOLVED!

When professionals use tools while working at height, bad things can happen: tools can fall, damaging equipment, interrupting work, and injuring people.

In response to the dangers presented by dropped objects, Snap-on developed **Tools@Height**, a tethered tool system for applications involving work being performed at height, and anywhere dropped or lost objects are a concern.



45 PIECE TOOLS@HEIGHT STARTER SET

Product Code	Description	List Price:	Sale Price:
WSC-45-TH	45 Piece Tools@Height Starter Set	\$2,900.00	\$1,242.86



27 PIECE TOOLS@HEIGHT STARTER SET

Product Code	Description	List Price:	Sale Price:
WSC-27-TH	27 Piece Tools@Height Starter Set	\$2,195.00	\$940.71



225 PIECE TOOLS@HEIGHT INTERMEDIATE MAINTENANCE SERVICE SET

Product Code	Description	List Price:	Sale Price:
WSC-225-TH	Complete Tools@Height Intermediate Tool Set (223 Pieces Total)	\$14,900.00	\$6,385.71



116 PIECE TOOLS@HEIGHT GENERAL MAINTENANCE SERVICE SET

Product Code	Description	List Price:	Sale Price:
WSC-116-TH	Complete Tools@Height General Service Tool Set Only (116 Pieces Total)	\$8,385.00	\$3,593.57



72 PIECE TOOLS@HEIGHT BASIC MAINTENANCE SERVICE SET

Product Code	Description	List Price:	Sale Price:
WSC-72-TH	Complete Tools@Height Basic Maintenance Tool Set in Safe Bucket	\$5,800.00	\$2,485.71



TRADE KITS

- BAHCO Trade sets provide a complete set of tools for basic maintenance, electricians, plumbers and general purpose
- Each set contains tools needed to help you keep your equipment working and get your work done faster, easier and safer.



4750-UP-1TS5



4750PTB65TS4



13 PIECE BASIC MAINTENANCE KIT

Product Code	Description	List Price:	Sale Price:
4750-UP-1TS5	13 Piece Basic Maintenance Kit	\$281.00	\$120.43

Kit contains an assortment of pliers, screwdrivers, adjustable wrenches and combination wrenches



18 PIECE GENERAL PURPOSE KIT

Product Code	Description	List Price:	Sale Price:
4750PTB65TS4	18 Piece General Purpose Kit	\$320.00	\$137.14

Kit contains an assortment of screwdrivers, hammers, tape measure and knives



3100TBS4



4750FB3-12TS4



24 PIECE PLUMBERS KIT

Product Code	Description	List Price:	Sale Price:
3100TBS4	24 Piece Plumbers Kit	\$605.00	\$259.29

The kit is geared for industrial plumbers. It includes an assortment of hand tools such as screwdrivers, wrenches, hacksaws and tube cutters



35 PIECE ELECTRICIAN'S KIT

Product Code	Description	List Price:	Sale Price:
4750FB3-12TS4	35 Piece Large Electrician's Kit	\$640.00	\$274.29

Packed in an Electrician's Bag with an assortment of pliers, screwdrivers, adjustable wrench, combination wrenches, files and knife

See complete product listing at snapon.com/industrialbrands



SCREWDRIVER KITS

- Three Component Comfort Grip Handles
- Chrome blades prevent corrosion and can be easily cleaned



4 PIECE CABINET TIP SCREWDRIVER SET



Three Component Comfort Grip Handles

Product Code	Description	List Price:	Sale Price:
24002A	4 Piece Cabinet Tip Screwdriver Set	\$33.00	\$14.14

Contents Include:

Product Code	Overall Length (Inches)	Blade Length (Inches)	Tip Width (Inches)
24201A	6 11/16	4	1/8
24207A	6 13/16	3	3/16
24211A	9 3/4	6	3/16
24213A	13 11/16	10	3/16



6 PIECE PHILLIPS® SCREWDRIVERS SET



Three Component Comfort Grip Handles

Product Code	Description	List Price:	Sale Price:
24012A	6 Piece Phillips Screwdrivers Set	\$66.75	\$28.61

Contents Include:

Product Code	Overall Length (Inches)	Blade Length (Inches)	Tip Width (Inches)
24247A	3 7/8	1 1/2	1
24249A	5 1/16	3	1
24251A	3 3/8	1 1/2	2
24253A	8 1/4	4	2
24257A	12 1/8	8	2
24259A	10 9/16	6	3



6 PIECE TORX® SCREWDRIVER SET



Three Component Comfort Grip Handles

Product Code	Description	List Price:	Sale Price:
24010A	6 Piece TORX® Screwdriver Set	\$60.75	\$26.04

Contents Include:

Product Code	Overall Length (Inches)	Blade Length (Inches)	TORX® Size
24263A	7 1/4	4	T10
24265A	7 1/4	4	T15
24267A	7 3/4	4	T20
24269A	8 1/4	4	T25
24271A	8 1/4	4	T27
24273A	8 1/4	4	T30

PLS-17



17 PIECE COMBINATION PLIER SET

Product Code	Description	List Price:	Sale Price:
PLS-17	17 Piece Combination Plier Set	\$670.00	\$287.14

Contents Include:

Product Code	Description	Handle Type
23102	8" Slip Joint	Double Dipped Plastic Handles
23105	9 3/4" Groove Joint	Double Dipped Plastic Handles
23107	15 3/4" Groove Joint	Double Dipped Plastic Handles
23407	7" Heavy Duty Diagonal Cutting	Double Dipped Plastic Handles
23409	6 1/4" Bent Nose	Double Dipped Plastic Handles
23411	8" long nose	Double Dipped Plastic Handles
23503	8 1/4" Multi-Purpose Wire Cutter	Double Dipped Plastic Handles with Curved Wire Cutter
23542	5 1/2" Mini Wire Cutter	Double Dipped Plastic Handles with Curved Wire Cutter
23603	9" Heavy Duty Linesman	Double Dipped Plastic and Bi-Mold Comfort Grip Handles
2628G-180	7" Ergo Side Cutting Combination	Ergonomically Designed Handles
2971G-250	10" Water Pump	Double Dipped Plastic Handles
2979D-180	7" Nut Gripping	Heavy Duty Design with PVC Grips
PL-146C	6 1/2" Duck Bill	Double Dipped Plastic Handles
PL-167	7 1/2" End Cutting	Double Dipped Plastic Handles
PL-211BC	11" Bent Nose	Double Dipped Plastic Handles
PL-211C	11" Long Reach Chain Nose	Double Dipped Plastic Handles
PL-411C	11" Extra Long Diagonal	Double Dipped Plastic Handles

PLS-6A



6 PIECE GENERAL SERVICE PLIERS SET

Double-Dipped Plastic Handles

Product Code	Description	List Price:	Sale Price:
PLS-6A	6 Piece General Service Pliers Set	\$184.00	\$78.86

Contents Include:

Product Code	Description
PL-1519C	5" utility superjoint
PL-1520C	10" utility superjoint
PL-46C	6" diagonal cutting
PL-76C	6 1/2" chain nose side cutters
2628G-180	7" side cutting
23503	8 1/4" front-end stripper

NEW INNOVATIVE PRODUCTS



WILLIAMS® 1/2" DRIVE DEEP IMPACT SOCKETS, 12 POINT, SAE

Product Code	Size (Inches)	List Price:
14-1216	1/2	\$14.60
14-1218	9/16	\$15.05
14-1220	5/8	\$15.05
14-1222	11/16	\$15.05
14-1224	3/4	\$16.30
14-1226	13/16	\$16.30
14-1228	7/8	\$19.35
14-1230	15/16	\$19.35
14-1232	1	\$22.05
14-1234	1-1/16	\$25.25
14-1236	1-1/8	\$30.25
14-1238	1-3/16	\$31.50
14-1240	1-1/4	\$33.25



WILLIAMS® 1/2" DRIVE DEEP IMPACT SOCKETS, 12 POINT, MM

Product Code	Size (Inches)	List Price:
14M-1210	10	\$15.70
14M-1211	11	\$15.70
14M-1212	12	\$15.80
14M-1213	13	\$15.80
14M-1214	14	\$16.20
14M-1215	15	\$16.50
14M-1216	16	\$16.50
14M-1217	17	\$17.10
14M-1218	18	\$17.35
14M-1219	19	\$17.70
14M-1220	20	\$18.30
14M-1221	21	\$20.65
14M-1222	22	\$20.90
14M-1223	23	\$21.95
14M-1224	24	\$22.80
14M-1225	25	\$24.45
14M-1227	27	\$24.90
14M-1229	29	\$26.00
14M-1230	30	\$27.00
14M-1232	32	\$27.00
14M-1233	33	\$29.50



Features

- SUPERTORQUE lobular openings for greater turning power without deforming the fastener
- Designed for Maximum engagement on 6 and 12 point fasteners
- Suitable for use with pneumatic and electric impact wrenches
- Specially heat treated for impact use to provide long life, safety and durability



WILLIAMS® REVERSIBLE RATCHETING COMBINATION WRENCHES



High Polish Chrome Finish, 12 Point, SAE

Product Code	Size	OAL	List Price:
1210RCU	5/16	5-7/8	\$44.25
1212RCU	3/8	7-1/32	\$46.50
1214RCU	7/16	7-5/8	\$46.75
1216RCU	1/2	8-11/16	\$49.50
1218RCU	9/16	9-1/4	\$53.00
1220RCU	5/8	10-9/32	\$57.00
1222RCU	11/16	10-29/32	\$59.25
1224RCU	3/4	12	\$64.25
7 Pc. Set:	3/8, 7/16, 1/2, 9/16, 5/8, 11/16, 3/4		\$385.25



High Polish Chrome Finish, 12 Point, MM

Product Code	Size	OAL	List Price:
1208MRCU	8	149	\$45.75
1209MRCU	9	164	\$46.75
1210MRCU	10	179	\$42.00
1211MRCU	11	194	\$47.25
1212MRCU	12	207	\$44.00
1213MRCU	13	221	\$47.25
1214MRCU	14	235	\$50.25
1215MRCU	15	249	\$52.50
1216MRCU	16	261	\$57.00
1217MRCU	17	277	\$59.25
1218MRCU	18	291	\$58.75
1219MRCU	19	305	\$61.75
10 Pc. Set:	10, 11, 12, 13, 14, 15, 16, 17, 18, 19		\$536.95



Features

- SUPERCOMBO® open end & SUPERTORQUE® box opening
- Ratcheting gear features up to 80 teeth, minimizing swing arc in tight spaces
- Longer length, wrench handle is sized for optimum comfort and balance, providing increased leverage, especially in tight spaces
- Low profile, easy-action, reverse lever won't get in your way
- Box ends are offset 15 degrees for knuckle clearance



WILLIAMS® WOBBLE EXTENSIONS

Product Code	Drive	Length	List Price:
M-202	1/4	2	\$8.50
M-203	1/4	3	\$9.50
M-206	1/4	6	\$12.50
M-211	1/4	11	\$17.50
B-201	3/8	1	\$8.50
B-203	3/8	3	\$11.00
B-206	3/8	6	\$14.75
B-208	3/8	8	\$17.25
B-211	3/8	11	\$21.00
B-218	3/8	18	\$45.25
S-202P	1/2	2	\$15.00
S-205P	1/2	5	\$19.50
S-211P	1/2	11	\$28.50
S-220P	1/2	20	\$49.50



Features

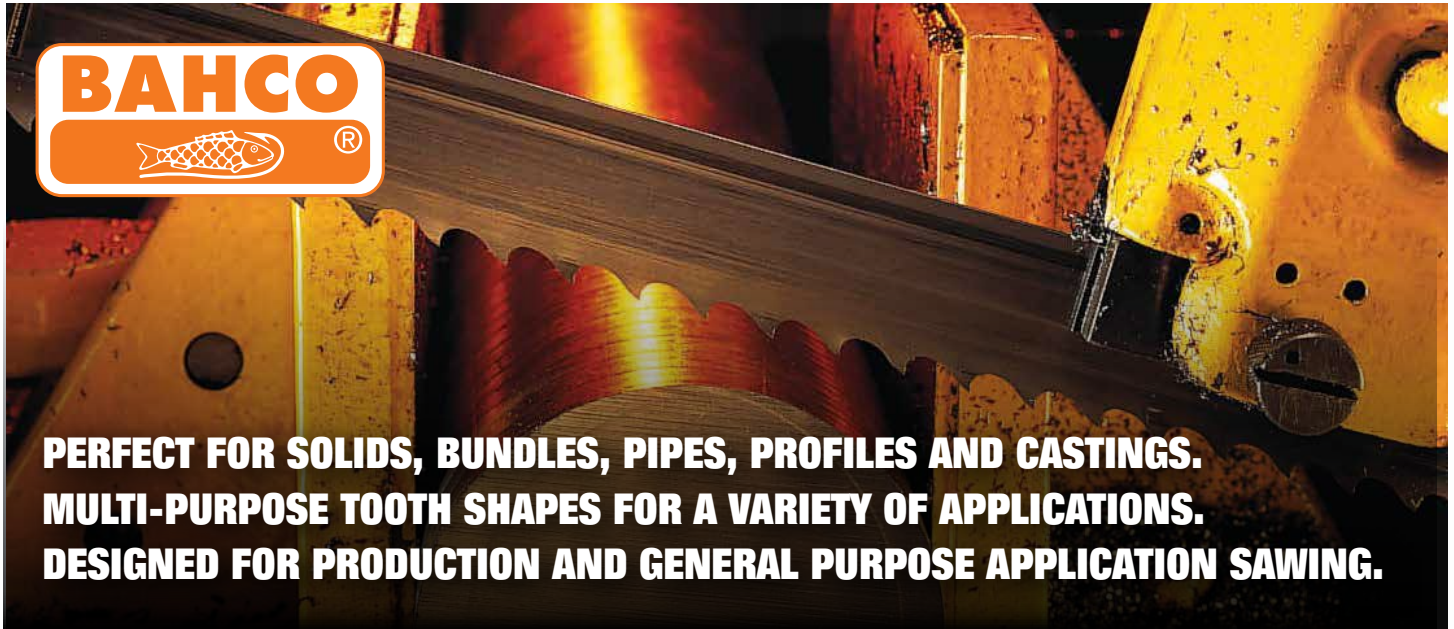
- Chrome plating provides increased protection from rust and corrosion
- Provides 16" of additional accessibility



See complete product listing at snapon.com/industrialbrands

BUY 5 SANDFLEX® M42 BANDSAW WELDED LOOPS

GET ONE FREE OF EQUAL OR LESSER VALUE

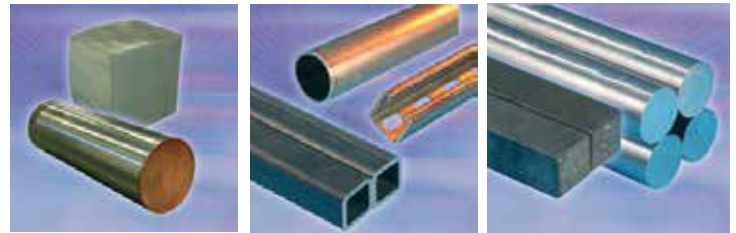


**PERFECT FOR SOLIDS, BUNDLES, PIPES, PROFILES AND CASTINGS.
MULTI-PURPOSE TOOTH SHAPES FOR A VARIETY OF APPLICATIONS.
DESIGNED FOR PRODUCTION AND GENERAL PURPOSE APPLICATION SAWING.**

WELDED BAND PRICES

Weld charge is included in prices below

Length (ft.)	1/4", 3/8", 1/2"	3/4"	1"	1 1/4"	1 1/2"	Length (ft.)	2"
5' 6"	\$23.06	\$24.93	\$28.40	\$33.21	\$38.37	20'	\$149.96
6'	\$24.36	\$26.40	\$30.04	\$35.18	\$40.71	20' 6"	\$153.34
6' 6"	\$25.66	\$27.87	\$31.68	\$37.15	\$43.05	21'	\$156.71
7'	\$26.96	\$29.34	\$33.32	\$39.12	\$45.39	21' 6"	\$160.09
7' 6"	\$28.26	\$30.81	\$34.96	\$41.09	\$47.73	22'	\$163.46
8'	\$29.56	\$32.28	\$36.60	\$43.06	\$50.07	22' 6"	\$166.84
8' 6"	\$30.86	\$33.75	\$38.24	\$45.03	\$52.41	23'	\$170.21
9'	\$32.16	\$35.22	\$39.88	\$47.00	\$54.75	23' 6"	\$173.59
9' 6"	\$33.46	\$36.69	\$41.52	\$48.97	\$57.09	24'	\$176.96
10'	\$34.76	\$38.16	\$43.16	\$50.94	\$59.43	24' 6"	\$180.34
10' 6"	\$36.06	\$39.63	\$44.80	\$52.91	\$61.77	25'	\$183.71
11'	\$37.36	\$41.10	\$46.44	\$54.88	\$64.11	25' 6"	\$187.09
11' 6"	\$38.66	\$42.57	\$48.08	\$56.85	\$66.45	26'	\$190.46
12'	\$39.96	\$44.04	\$49.72	\$58.82	\$68.79	26' 6"	\$193.84
12' 6"	\$41.26	\$45.51	\$51.36	\$60.79	\$71.13	27'	\$197.21
13'	\$42.56	\$46.98	\$53.00	\$62.76	\$73.47	27' 6"	\$200.59
13' 6"	\$43.86	\$48.45	\$54.64	\$64.73	\$75.81	28'	\$203.96
14'	\$45.16	\$49.92	\$56.28	\$66.70	\$78.15	28' 6"	\$207.34
14' 6"	\$46.46	\$51.39	\$57.92	\$68.67	\$80.49	29'	\$210.71
15'	\$47.76	\$52.86	\$59.56	\$70.64	\$82.83	29' 6"	\$214.09
15' 6"	\$49.06	\$54.33	\$61.20	\$72.61	\$85.17	30'	\$217.46
16'	\$50.36	\$55.80	\$62.84	\$74.58	\$87.51	30' 6"	\$220.84
16' 6"	\$51.66	\$57.27	\$64.48	\$76.55	\$89.85	31'	\$224.21
17'	\$52.96	\$58.74	\$66.12	\$78.52	\$92.19	31' 6"	\$227.59
17' 6"	\$54.26	\$60.21	\$67.76	\$80.49	\$94.53	32'	\$230.96
18'	\$55.56	\$61.68	\$69.40	\$82.46	\$96.87	32' 6"	\$234.34
18' 6"	\$56.86	\$63.15	\$71.04	\$84.43	\$99.21	33'	\$237.71
19'	\$58.16	\$64.62	\$72.68	\$86.40	\$101.55	33' 6"	\$241.09
19' 6"	\$59.46	\$66.09	\$74.32	\$88.37	\$103.89	34'	\$244.46
20'	\$60.76	\$67.56	\$75.96	\$90.34	\$106.23	34' 6"	\$247.84
20' 6"	\$62.06	\$69.03	\$77.60	\$92.31	\$108.57	35'	\$251.21
21'	\$63.36	\$70.50	\$79.24	\$94.28	\$110.91	35' 6"	\$254.59
21' 6"	\$64.66	\$71.97	\$80.88	\$96.25	\$113.25	36'	\$257.96
22'	\$65.96	\$73.44	\$82.52	\$98.22	\$115.59	36' 6"	\$261.34
22' 6"	\$67.26	\$74.91	\$84.16	\$100.19	\$117.93	37'	\$264.71
23'	\$68.56	\$76.38	\$85.80	\$102.16	\$120.27	37' 6"	\$268.09
23' 6"	\$69.86	\$77.85	\$87.44	\$104.13	\$122.61	38'	\$271.46
24'	\$71.16	\$79.32	\$89.08	\$106.10	\$124.95	38' 6"	\$274.84
24' 6"	\$72.46	\$80.79	\$90.72	\$108.07	\$127.29	39'	\$278.21
25'	\$73.76	\$82.26	\$92.36	\$110.04	\$129.63	39' 6"	\$281.59
25' 6"	\$75.06	\$83.73	\$94.00	\$112.01	\$131.97	40'	\$284.96
26'	\$76.36	\$85.20	\$95.64	\$113.98	\$134.31	40' 6"	\$288.34



To Calculate your cost on bands not shown

Welded to length cost calculation:

- Band Length × Price Per Foot = Material Cost
- Material Cost + Weld Charge = Band Cost

Weld Charges	List Price:	Sale Price:
1/2" to 3/4"	\$11.15	\$8.76
1"	\$13.18	\$10.36
1-1/4"	\$14.69	\$11.54
1-1/2"	\$16.07	\$12.63
2"	\$19.04	\$14.96

Bands slightly over a foot in length are figured at the next half foot increment.

Bands slightly over half foot in length are figured at next full foot increment.

Example: 5'4-1/2" band figures as a 5'6" band
7'9-1/2" band figures as a 8'0" band

Dimensions	14/18	10/14	8/12	6/10	5/8	4/6	3/4	2/3	1.4/2	Per Foot	List Price	Sale Price
1/2 x .020	X	X								\$3.31	\$2.60	
1/2 x .025	X	X	X	X						\$3.31	\$2.60	
1/2 x .035		X	X	X						\$3.31	\$2.60	
3/4 x .035		X	X	X	X	X				\$3.74	\$2.94	
1 x .035		X	X	X	X	X	X	X		\$4.17	\$3.28	
1-1/4 x .042				X	X	X	X	X		\$5.02	\$3.94	
1-1/2 x .050				X	X	X	X	X		\$5.95	\$4.68	
2 x .063						X	X	X	X	\$8.59	\$6.75	



SOCKET AND DRIVE TOOL SETS

- All tools are professional quality, made of high-grade chrome vanadium steel
- Sockets feature SUPERTORQUE® lobular openings for greater turning power without deforming the fastener
- Packed in rugged compact high-density polyethylene (HDPE) cases that are strong and durable yet light in weight



WILLIAMS® 15 PIECE 3/8" DRIVE SOCKET AND DRIVE TOOL SET

Contents Include:

Ratchet, Extensions, Universal Joint, Shallow 12 Point Sockets sizes: 8 mm to 19 mm.

Product Code	Description	List Price:	Sale Price:
50663	6 Point Compact Case Tool Set, SAE	\$62.75	\$26.90



WILLIAMS® 16 PIECE 3/8" DRIVE SOCKET AND DRIVE TOOL SET

Contents Include:

Ratchet, Extensions, Universal Joint, Shallow 12 Point Sockets sizes: 8 mm to 19 mm.

Product Code	Description	List Price:	Sale Price:
50665	6 Point Compact Case Tool Set, Metric	\$62.00	\$26.57



WILLIAMS® 12 PIECE 1/2" DRIVE SOCKET AND DRIVE TOOL SET

Contents Include:

Ratchet, Extension, Shallow 12 Point Sockets sizes 1/2" to 1-1/8"

Product Code	Description	List Price:	Sale Price:
50667	12 Point Compact Case Tool Set, SAE	\$83.50	\$35.79



WILLIAMS® 12 PIECE 1/2" DRIVE SOCKET AND DRIVE TOOL SET

Contents Include:

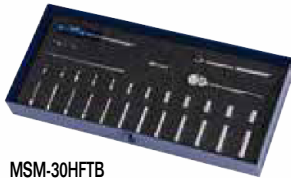
Ratchet, Extension, Shallow 12 Point Sockets, 12 mm to 24 mm.

Product Code	Description	List Price:	Sale Price:
50669	12 Point Compact Case Tool Set, Metric	\$78.00	\$33.43

See complete product listing at snaon.com/industrialbrands



SOCKET AND DRIVE TOOL SETS



MSM-30HFTB

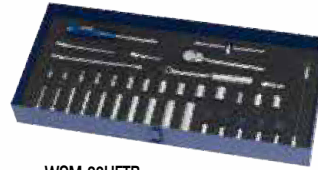


30 PIECE 1/4" DRIVE SOCKET AND DRIVE TOOL SET

6 Point Metric, Packed in Exclusive Keep-Safe-Foam System with with Metal Box

Contents Include: Drive Tools, Shallow 6 Point Sockets sizes: 4mm to 14mm, Deep 6 Point Sockets sizes: 4mm to 14mm

MSM-30HFTB List Price: \$404.00 **Sale Price: \$173.14**



WSM-38HFTB



38 PIECE 1/4" DRIVE SOCKET AND DRIVE TOOL SET

6 & 8 Point SAE, Packed in Exclusive Keep-Safe-Foam System with with Metal Box

Contents Include: Drive Tools, Shallow 6 Point Sockets sizes: 5/32" to 9/16", Deep 6 Point Sockets sizes: 3/16" to 9/16", Shallow 8 Point Sockets sizes: 1/4" to 3/8", Screwdrive Bit Sockets

WSM-38HFTB List Price: \$530.00 **Sale Price: \$227.14**



WSB-23HFTB



23 PIECE 3/8" DRIVE SOCKET AND DRIVE TOOL SET

6 Point SAE, Packed in Exclusive Keep-Safe-Foam System with with Metal Box

Contents Include: Drive Tools, Shallow 6 Point Sockets sizes: 3/8" to 7/8", Deep 6 Point Sockets sizes: 3/8" to 7/8"

WSB-23HFTB List Price: \$383.00 **Sale Price: \$164.14**



WSS-18HFTB

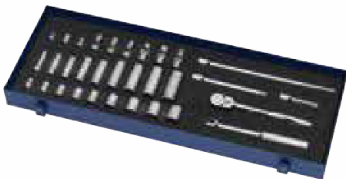


18 PIECE 1/2" DRIVE SOCKET AND DRIVE TOOL SET

6 Point SAE, Packed in Exclusive Keep-Safe-Foam System with with Metal Box

Contents Include: Drive Tools, Shallow 6 Point Sockets sizes: 3/8" to 1-1/4"

WSS-18HFTB List Price: \$436.00 **Sale Price: \$186.86**



WSB-32FTB



32 PIECE 3/8" DRIVE SOCKET AND DRIVE TOOL SET

8 & 12 Point SAE, Packed in Exclusive Keep-Safe-Foam System with with Metal Box

Contents Include: Drive Tools, Shallow 8 Point Sockets sizes: 1/4" to 3/8", Shallow 12 Point Sockets sizes: 3/8" to 7/8", Shallow Universal 12 Point Sockets sizes: 3/8" to 5/8", Deep 12 Point Sockets sizes: 3/8" to 7/8"

WSB-32FTB List Price: \$610.00 **Sale Price: \$261.43**



WSS-22FTB



22 PIECE 1/2" DRIVE SOCKET AND DRIVE TOOL SET

12 Point SAE, Packed in Exclusive Keep-Safe-Foam System with with Metal Box

Contents Include: Drive Tools, Shallow 12 Point Sockets sizes: 3/8" to 1-1/4"

WSS-22FTB List Price: \$570.00 **Sale Price: \$244.89**

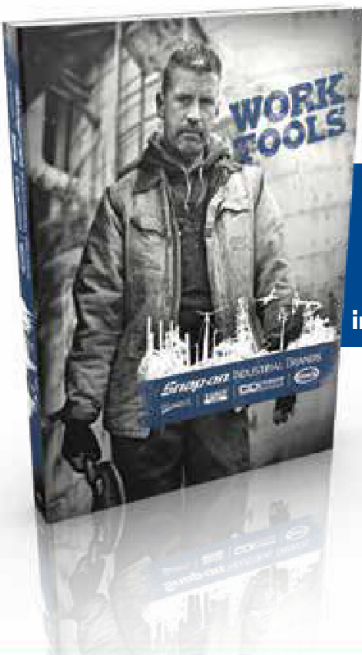


AUTHORIZED DISTRIBUTOR

Snap-on INDUSTRIAL BRANDS



Offer Valid While Supplies Last
April 1, 2018 - July 31, 2018



To request a copy of our new catalog email:
industrialbrands@snapon.com