

# Potential of Pan-Tuberculosis Treatment to Drive Emergence of Novel Resistance

C. Finn McQuaid, Theresa S. Ryckman, Nicolas A. Menzies, Richard G. White, Ted Cohen, Emily A. Kendall

New tuberculosis (TB) drugs with little existing antimicrobial resistance enable a pan-TB treatment regimen, intended for universal use without prior drug-susceptibility testing. However, widespread use of such a regimen could contribute to an increasing prevalence of antimicrobial resistance, potentially rendering the pan-TB regimen ineffective or driving clinically problematic patterns of resistance. We developed a model of multiple sequential TB patient cohorts to compare treatment outcomes between continued use of current standards of care (guided by rifampin-susceptibility testing) and a hypothetical pan-TB approach. A pan-TB regimen that met current target profiles was likely to initially outperform the standard of care; however, a rising prevalence of transmitted resistance to component drugs could make underperformance likely among subsequent cohorts. Although the pan-TB approach led to an increased prevalence of resistance to novel drugs, it was unlikely to cause accumulation of concurrent resistance to novel drugs and current first-line drugs.

**R**ifampin-resistant tuberculosis (RR-TB) is a key contributor to global antimicrobial resistance; >400,000 persons had RR-TB in 2020, nearly 40% of whom probably died as a result (1). More than 57% of those who have RR-TB disease are not enrolled in RR-TB treatment, including those who are not treated for tuberculosis (TB) at all and those who are inappropriately given treatments for rifampin-susceptible TB (RS-TB) (1). For those who are enrolled in RR-TB treatment, recent advances, including 6-month oral

regimens (2), have improved tolerability and increased cure rates to >80%, but the need to identify drug resistance and direct patients with RR-TB down a second-line treatment pathway still complicates the diagnosis and treatment of TB.

Although tailored treatment remains a key pillar in preventing antimicrobial-resistance in general, a lack of access to rapid drug-susceptibility testing (DST) for TB represents a critical issue in reducing inappropriate treatment, in which drugs for TB treatment are almost solely used for TB. The growing availability of novel drugs and drug candidates with low or no resistance (3,4) has enabled a pan-TB treatment approach, offering 1 universal treatment regimen and no requirement for DST before initiating treatment. The World Health Organization (WHO) target profile for a pan-TB regimen also calls for short duration and improved tolerability and forgiveness (i.e., ability to withstand nonadherence without negative consequences) compared with the current standard of care (5). Such a regimen has the potential to remove barriers to initiation of appropriate treatment, improve treatment outcomes, and be effective and cost-effective (6). Although the regimen could be highly effective, the pan-TB approach requires that resistance to its component drugs is rare.

One concern about such a regimen is that widespread use of new drugs could exert a selective pressure that favors increases in resistance. Testing for both phenotypic and genotypic resistance to novel drugs remains limited and, because of technical difficulties, is likely to remain so in the near future (7). In the context of emerging resistance to a pan-TB regimen's component drugs, continued use of the regimen without routine susceptibility testing could lead to resistance to multiple drugs in the regimen and poor clinical outcomes. In addition, use of current first-line drugs such as rifampin to retreat those with resistance to the pan-TB regimen could lead to the

Author affiliations: London School of Hygiene and Tropical Medicine, London, UK (C.F. McQuaid, R.G. White); Johns Hopkins University School of Medicine, Baltimore, Maryland, USA (T.S. Ryckman, E.A. Kendall); Harvard T.H. Chan School of Public Health, Boston, Massachusetts, USA (N.A. Menzies); Yale School of Public Health, New Haven, Connecticut, USA (T. Cohen)

DOI: <https://doi.org/10.3201/eid3008.240541>

development of TB strains simultaneously resistant to both pan-TB drugs and current first-line drugs, leaving limited treatment options for affected persons.

Those resistance-related risks warrant particularly careful consideration given that leading candidate regimens in development for the pan-TB indication share newer drugs such as bedaquiline and pretomanid with the regimens currently recommended for treating RR-TB (clinical trial nos. NCT05971602 [https://www.clinicaltrials.gov/study/NCT05971602] and NCT06114628 [https://www.clinicaltrials.gov/study/NCT06114628]) (8–11). Although most TB, including most RR-TB, remains susceptible to these new drugs, resistance has emerged quickly in some patient populations for whom they have been used. For example, in South Africa, an early adopter of bedaquiline for RR-TB treatment, as much as 8% of the 2017 RR-TB cohort also had bedaquiline resistance (12). Those data suggest that resistance to some pan-TB regimen components might be prevalent among patients with RR-TB by the time a pan-TB regimen becomes available and that similar emergence could occur among RS-TB if pan-TB regimens are not designed to guard against emergent resistance.

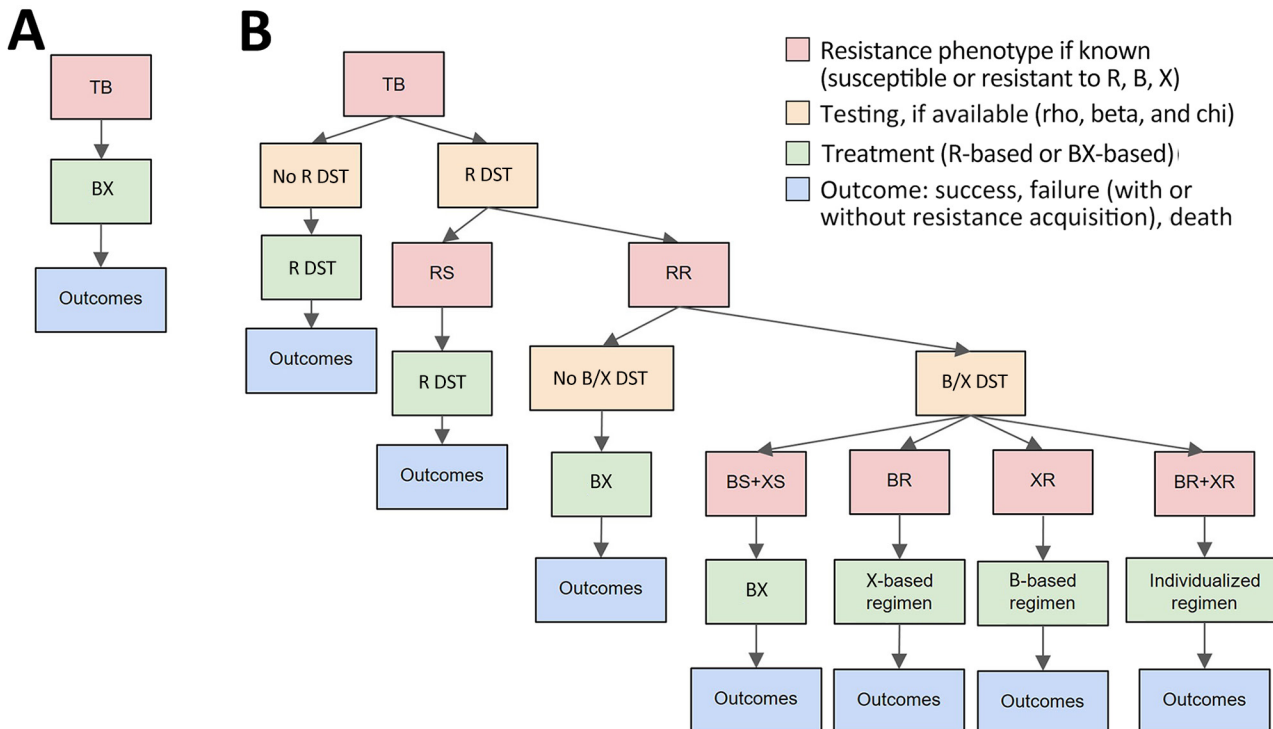
Evidence is limited on the pace of emerging resistance or its effects on treatment outcomes, but an urgent need exists to anticipate pathways by which resistance could emerge. We used a modeling approach to explore the circumstances under which use of a pan-TB regimen could contribute to increasing resistance prevalence to new and existing drugs, posing resistance-related risks that could compromise the overall health benefit of a pan-TB strategy.

## Methods

We developed a cohort model to evaluate clinical and drug-resistance outcomes over multiple successive cohorts of patients (Appendix Table 1, https://wwwnc.cdc.gov/EID/article/30/8/24-0541-App1.pdf) (Figure 1). We followed each cohort from the time of initial TB diagnosis, comparing a pan-TB strategy with current standards of care.

## Modeling of Drugs, Regimens, and Drug Resistance

We explicitly modeled 3 drug classes as components of treatment regimens and drug-susceptibility phenotypes: rifamycins including rifampin (R), diarylquinolines including bedaquiline (B), and an additional unspecified novel drug (X) that is a



**Figure 1.** Treatment pathways for new TB patients in study of potential of pan-TB treatment to drive emergence of novel resistance, comparing a pan-TB treatment scenario (A) with the standard-of-care scenario (B). Retreatment pathways are shown in Appendix Figure 1 (https://wwwnc.cdc.gov/EID/article/30/8/24-0541-App1.pdf). BR-TB, diarylquinoline-resistant TB; RR-TB, rifampin-resistant TB; RS-TB, rifampin-susceptible TB; TB, tuberculosis; XR-TB, TB resistant to additional novel drug X; R DST, rifampin drug-susceptibility testing; B DST, diarylquinoline susceptibility testing; X DST, other novel drug (or drugs) susceptibility testing.

component of RR-TB and pan-TB regimens. X was modeled on bedaquiline in its propensity to develop drug-resistance and the effects of that drug resistance on treatment outcome. The standard-of-care regimen for treatment of RS-TB is denoted R but implicitly includes additional drugs such as isoniazid, and the B- and X-containing regimen (BX) implicitly includes  $\geq 1$  additional novel drugs.

Phenotypes resistant to R, B, and X are shown as RR-TB, BR-TB, and XR-TB, respectively. Those phenotypic categories enable resistance to additional drugs whose resistance was not explicitly modeled; for example, RR-TB is usually isoniazid-resistant and may be fluoroquinolone-resistant, and XR-TB may be resistant to  $\geq 1$  components of the pan-TB regimen. We modeled resistance to each drug in simplified binary fashion, corresponding to accepted breakpoints for phenotypic resistance to rifampin and bedaquiline. We defined concurrent resistance both to R and to either B, X, or both B and X as complex resistance in our model. We combined DST coverage and sensitivity to detect RR, BR, and XR phenotypes into probability-of-resistance-detection parameters.

### Initial Treatment Pathways

In the standard-of-care scenario, R was used to treat RS-TB. We assumed current levels of DST coverage for rifampin. BX was used for treatment of RR-TB, reflecting current WHO guidelines recommending BPaL(M) (13), and we assumed that future improvements to the efficacy or safety of this regimen's component classes would be incorporated into future RR-TB regimens. We assumed that only a fraction of patients would undergo DST for B and X before RR-TB treatment, estimated based on current fluoroquinolone DST coverage. For patients with detected resistance to rifamycins and  $\geq 1$  novel drugs (B or X), we assumed that an individualized second-line regimen would be constructed, with inclusion of either B or X (i.e., an X-based or B-based individualized regimen) if susceptibility to 1 of these drugs was retained and a conventional second-line regimen otherwise.

In the pan-TB scenario, we assumed use of the BX regimen for all new TB patients. In addition, no DST was conducted for any drugs before initial treatment.

### Treatment Outcomes

We modeled 4 possible outcomes of TB treatment: durable cure, non-cure (i.e., treatment failure or relapse) without acquisition of new resistance, non-cure with acquisition of new resistance to some component of the treatment regimen, and death. Probabilities of cure accounted for nonadherence,

the possibility of early treatment discontinuation, and the effects of any preexisting resistance (Appendix Table 2); we separately estimated the likely outcome for each possible combination of regimen and pretreatment resistance phenotype (Appendix Table 3). Differences between regimens in terms of efficacy, duration of treatment, tolerability, and forgiveness correspond to a pan-TB target product profile developed by WHO (5), and we implicitly represented these factors as determinants of the proportion of patients durably cured on the basis of a previous study (14). For example, we implicitly represented the effect of poor treatment adherence attributable to low tolerability through a decreased probability of durable cure, dependent on regimen forgiveness. We assumed the same programmatic support across all regimens and did not explicitly consider regimen cost (including monitoring for side effects and other programmatic support) or ease of access to drugs, although those factors might be expected to have a differential effect on regimen use. We did not model rare acquisition of resistance to multiple regimen components during 1 treatment course.

### Retreatment Pathways

For patients who did not recover or who relapsed after a first round of treatment, the selection of retreatment regimens took into account the previous treatment regimen, any previously known drug resistance and, potentially, the results of additional or repeat DST (Appendix Figure 1). In the standard-of-care scenario, the mapping between known drug resistance and selected regimen was the same for retreatment as for initial treatment, but DST coverage for R (among patients not already known to have RR-TB) and for B and X (among patients with RR-TB) was higher in retreatment. In the pan-TB scenario, R was used as a retreatment regimen for patients with confirmed rifampin susceptibility, but BX continued to be the default regimen in retreatment for patients with no DST results. DST coverage for retreatment patients in the pan-TB scenario was the same as for new patients in the standard-of-care scenario. We also performed a sensitivity analysis where DST was performed at these levels for R but not for B or X and where DST coverage for R was 100%.

### Time Approximation

To simulate the accumulation of resistance and its effect on outcomes over time, we extended the cohort model over multiple treatment cohorts representing successive generations of transmitted TB. Our representation captured the number of generations of

transmission but ignored the (large variation in) calendar time per generation. In estimating how transmission from earlier cohorts contributed to a future cohort of new TB patients, we assumed that cohort sizes remained the same over time (i.e., an effective reproduction number of 1 in all scenarios). The distribution of resistance in each cohort (but not the absolute size of the cohort) assumed that patients who had been unsuccessfully treated in previous cohorts had generated on average as much transmission after their initial diagnosis as before. Therefore, the initial drug-resistance composition of a given treatment cohort was a weighted average of the immediately preceding cohort at 3 different timepoints (at the start of treatment, after initial treatment, and after retreatment) weighted by the proportion of the cohort still with TB at each of those timepoints. We modeled 10 generations of new treatment cohorts.

Although our results can be loosely translated into calendar time (assuming, for example, that 1 cohort generation of transmission corresponds to a serial interval of 1–2 years on average [15]), our estimation of timescales does not take into account the distributions of times to secondary case generation or to diagnosis, both of which can be highly varied and setting-dependent for TB (16–18). Overinterpretation of the generation time is inadvisable.

We assumed that 4% of cases in the first cohort were RR-TB (1), of which 2% were also resistant to B, on the basis of recent clinical data on bedaquiline resistance (12,19–21). Simultaneously, 0.2% of RS-TB cases had resistance to B, also assumed on the basis of clinical trial and surveillance data for bedaquiline

(22,23). We assumed that initial prevalence of resistance to X was zero. A sensitivity analysis considered higher baseline prevalence of BR (by the same relative factor among both RS-TB and RR-TB cases) to account for the possible accumulation of resistance between the present day and when pan-TB may become available in the future.

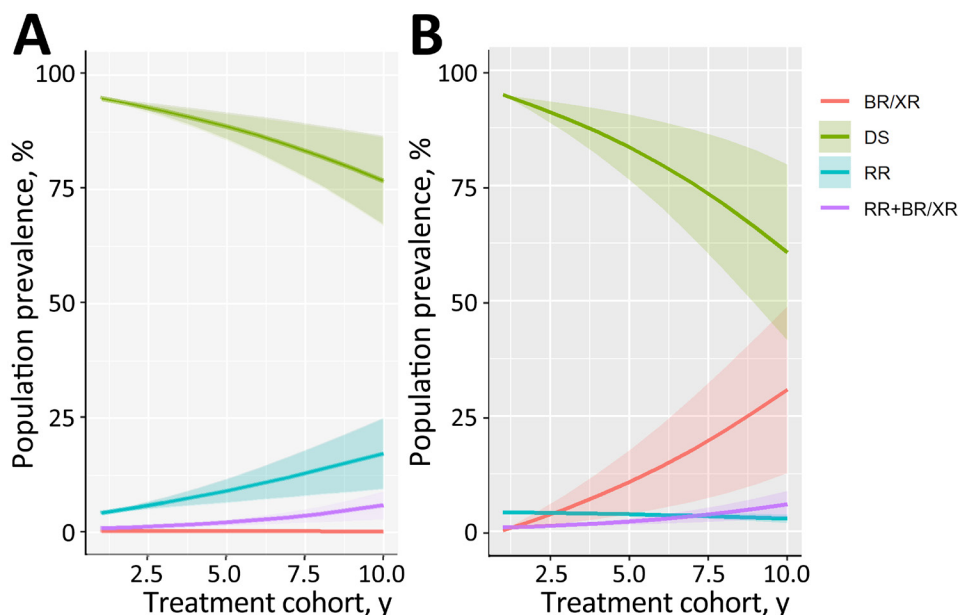
### Parameter Uncertainty

Many of our parameter values had little data to inform them. As such, we selected wide uncertainty ranges on the basis of the range of estimates available in the literature. We assumed  $\beta$  distributions for all parameter values except the risk ratio describing the effect of existing resistance on further resistance acquisition (Appendix Table 1), for which we assumed a uniform distribution because of the extremely high uncertainty and a desire to explore extreme values. To propagate uncertainty through the analysis, we created 1,000 parameter sets simultaneously, independently sampling from the distributions of all uncertain parameters, and we reestimated the model with each of these parameter sets. We explored parameter extremes through 1- and 2-way sensitivity analyses.

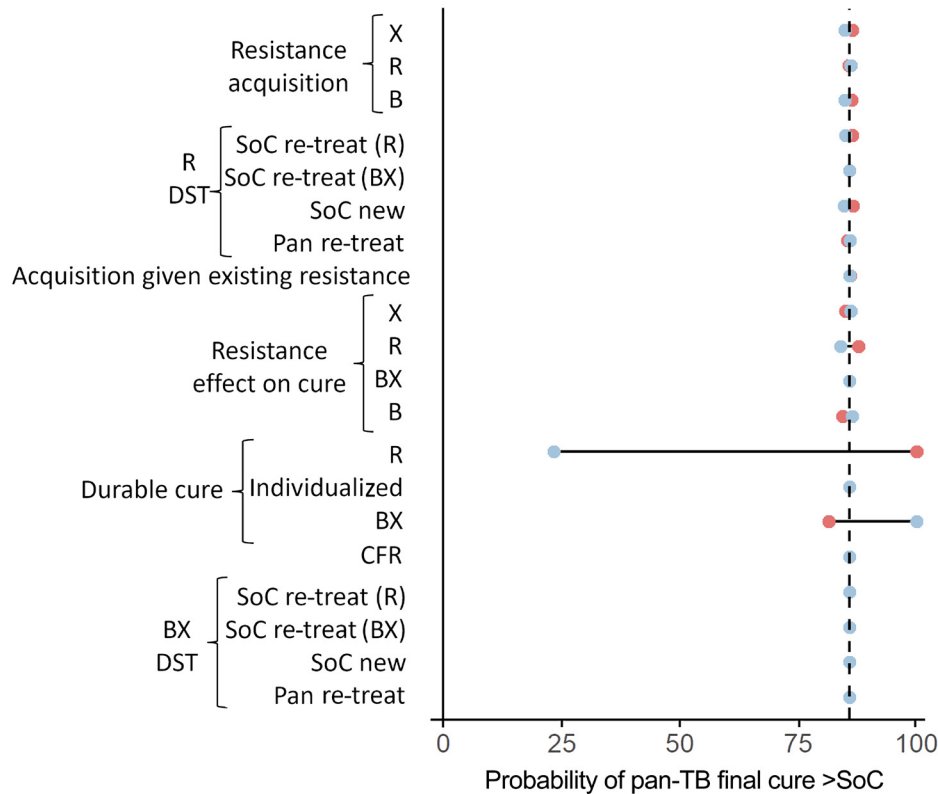
## Results

### Model Approach

Over multiple cohorts of patients in both scenarios, the proportion of TB that was resistant to  $\geq 1$  modeled drug was projected to increase (i.e., the proportion of cases that was DS was projected to decrease) (Figure 2). The change was estimated to be slightly faster in



**Figure 2.** Prevalence of resistance phenotypes over multiple cohorts of TB treatment in study of potential of pan-TB treatment to drive emergence of novel resistance for standard-of-care (A) and pan-TB (B) treatment scenarios. Shaded areas indicate 95% CIs. x-axis indicates scale indicates treatment generations. BR/XR, TB resistant to a diarylquinoline or novel drug X or both only; DS, drug-susceptible TB; RR, rifampin-resistant TB; RR+BR/XR, TB resistant both to rifampin and to either a diarylquinoline, novel drug X, or both; TB, tuberculosis.



**Figure 3.** Univariate sensitivity analysis for initial TB treatment regimen comparison in study of potential of pan-TB treatment to drive emergence of novel resistance. Parameter sets are sampled with 1 parameter fixed at the extremes of its 95% CI. The outcome is the proportion of samples that result in more patients durably cured in the pan-TB scenario than the SoC scenario, within the first cohort of patients treated, and at current prevalence of resistance. Blue circles indicate use of upper bound of the parameter's 95% CI; red circles indicate the lower bound. B, diarylquinolines; BX, diarylquinoline- and novel drug X-containing regimen; CFR, case-fatality ratio; DST, drug-susceptibility testing; R, rifamycins; re-treat, patients with previously treated TB; SoC, standard of care; X, additional novel drug X.

the pan-TB scenario, such that by the 10th generation, only 61.0% (95% CI 42.3%–79.7%) of patients had no drug resistance under the pan-TB scenario, compared with 76.7% (95% CI 67.3%–86.0%) under the standard of care. However, those are proportion-based results and do not show changes in absolute TB incidence or drug-resistant TB incidence that may result from improved regimens.

The drug resistance that initially emerged under the pan-TB scenario was primarily B or X mono-resistance (mirroring the continued selection of R resistance in the standard-of-care scenario), but over time, with DST-free use of the pan-TB regimen, simultaneous resistance to both B and X became more common (30.8% [95% CI 12.6%–48.9%] of all TB cases after 10 cohorts of treatment) (Figure 2). We examined the routes by which patients with different resistance phenotypes arrive at their final treatment outcomes (Appendix Figure 2).

#### Performance of Pan-TB versus Standard of Care

For a single cohort of patients, when sampling our uncertainty distributions for all parameters (including initial prevalences of resistance) simultaneously, pan-TB was highly (85.9%) likely to result in more patients cured than the standard of care (Figure 3). In univariate analysis (fixing 1 parameter at an extreme

of its uncertainty range while varying all others), the probability of standard of care outperforming pan-TB was observed to depend most heavily on the relative effectiveness of the pan-TB regimen compared with the standard of care in achieving durable cure among patients with DS-TB. The outperformance of the pan-TB regimen compared with the standard of care, in an initial cohort of patients, was robust to variation in any single resistance-related parameter and to simultaneous variation in the prevalence of both R and B resistance (Appendix Figure 3); however, assuming a higher prevalence of B resistance increased the sensitivity to other uncertain parameters (Appendix Figure 4).

#### Pan-TB Viability over Time

In addition to modeling the treatment outcomes of a single cohort with current levels of initial drug resistance (Figure 3), we assessed how the effects of uncertain model parameters can compound over multiple generations of transmission and treatment by comparing multiple generations of the standard of care to multiple generations of the pan-TB approach for each sampled set of parameters (Figure 4). We estimated that the probability of pan-TB outperforming the standard of care in a patient cohort would drop to 38% within 10 generations (Figure 4, panel A) compared with 86% in the initial patient cohort (Figure 3).

In sensitivity analyses that propagated uncertainty through multiple patient cohorts, the comparison between regimen outcomes in later cohorts remained sensitive to the regimens' relative effectiveness for DSTB, but resistance-related parameters also increased in importance. The probability that the pan-TB regimen remained superior to the standard of care after 10 generations could vary from 11% to 68% as a result of varying the per-treatment risk for acquired B resistance and from 22% to 48% when varying the effects of that B resistance on efficacy. The durability of the pan-TB approach was even more certain to be short when these 2 parameters were varied simultaneously (Figure 4, panel B), when the corresponding parameters for both B and novel drug X were varied simultaneously (Appendix Figure 5), or when the rate of acquisition of resistance to novel drugs was increased (by extending the upper bound of the 95% CIs to 8%, as has been reported among RR-TB cohorts treated with bedaquiline, for example [13,24], and under programmatic conditions for earlier regimens [25]) (Appendix Figure 6).

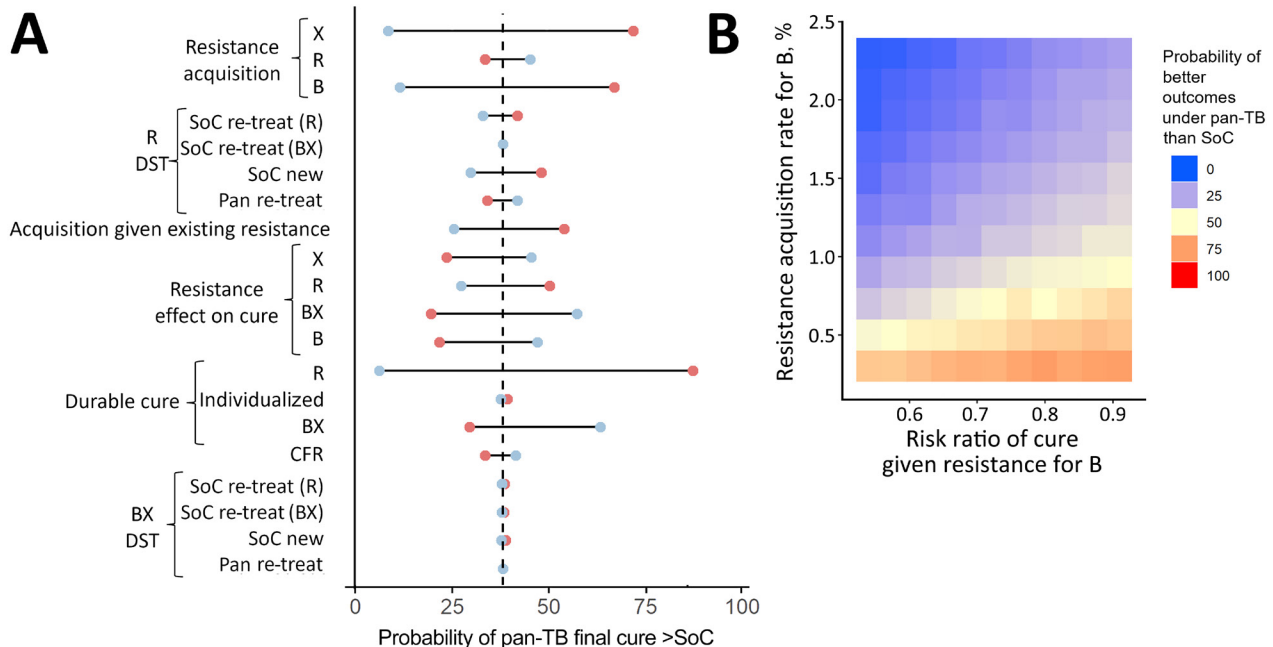
**Emergence of Complex Resistance**

The prevalence of concurrent, complex resistance both to R and to a novel drug (B, X, or both) increased

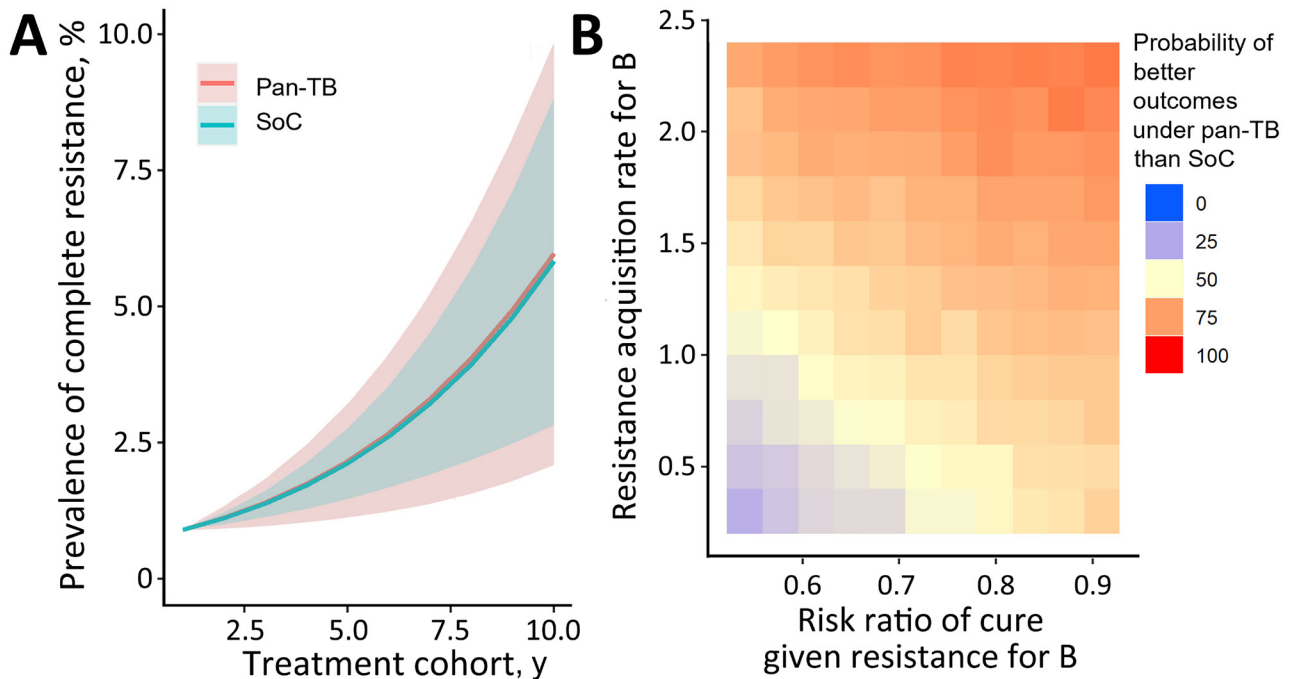
at a similarly slow pace in both scenarios. The prevalence of complex resistance reached 6.0% (95% 2.3%–9.8%) of all TB in the 10th treatment generation of the pan-TB scenario and 5.9% (95% CI 2.9%–9.0%) in the 10th generation under the standard of care (Figure 5, panel A). These trends in complex resistance were largely unaffected by the availability of R DST and B or X DST for retreatment patients in the pan-TB scenario (Appendix Figure 7). The pan-TB scenario led to a higher prevalence of complex resistance than the standard of care when the acquisition rate of resistance to novel drugs was low (such that much of the B resistance reflected selection among RR-TB before introduction of the pan-TB regimen) and the effect of that resistance on cure was high (Figure 5, panel B; Appendix Figure 8).

**Discussion**

Assuming that a pan-TB regimen was similarly efficacious against pan-susceptible TB as the current rifampin-susceptible TB regimen (leading to noninferiority under optimal trial conditions) and also had a shorter duration and improved adherence (resulting in high effectiveness under real-world conditions), we found that the pan-TB approach was very



**Figure 4.** Sensitivity analysis for TB treatment regimen comparison after use in multiple patient cohorts in study of potential of pan-TB treatment to drive emergence of novel resistance. Comparison shows an outcome of proportion of patients durably cured in the 10th cohort when using either the pan-TB or the SoC approach for 10 cohorts. A) Univariate sensitivity analysis, sampling parameter sets with 1 parameter fixed at an extreme of its 95% CI, where blue circles indicate high parameter values and red circles low parameter values. B) Multivariate sensitivity analysis varying 2 resistance-related parameters simultaneously, where red indicates when pan-TB TB regimen performs better and blue when SoC regimen performs better. B, diarylquinolines; BX, diarylquinoline- and novel drug X-containing regimen; CFR, case-fatality ratio; DST, drug susceptibility testing; R, rifamycins; re-treat, those with previously treated TB; SoC, standard of care; X, additional novel drug X.



**Figure 5.** Prevalence of complex resistance to both R and a pan-TB treatment regimen component (B, X, or both) resulting from the pan-TB compared with standard-of-care scenario in study of potential of pan-TB treatment to drive emergence of novel resistance. A) Prevalence over treatment generations; B) probability that the pan-TB scenario leads to higher prevalence of complex resistance as a proportion of all TB after 10 cohorts. Red indicates when pan-TB regimen performs better (<50% probability of higher prevalence of complex resistance) and blue when SoC regimen performs better. B, diarylquinolines; SoC, standard of care; TB, tuberculosis.

likely to outperform the standard of care when initially introduced, even with high levels of bedaquiline resistance in the population. As resistance to the pan-TB regimen accumulated (including resistance to multiple component novel drugs), the probability of outperformance declined rapidly. Still, the pan-TB approach was unlikely to cause accumulation of concurrent resistance to both novel and current drugs.

Our results affirm that introduction of a pan-TB regimen meeting current regimen-development targets is highly likely to initially improve population-wide treatment outcomes, primarily as a result of improved outcomes for patients with DS-TB. However, our results also demonstrate the likelihood that, after several cycles of transmission, continued use of a single pan-TB regimen will no longer be viable because of emerging resistance, including resistance to multiple components of the pan-TB regimen. Some combination of regimen improvements and DST re-introduction would be needed to maintain the improved health outcomes that the pan-TB regimen had initially offered. Given a pipeline of more potent diarylquinolines and novel drug classes (4), updating a pan-TB regimen to counteract this decline might be possible; however, further work is needed to compare the timescales of this emergence of resistance to those

of regimen development and TB elimination and to understand the most effective responses to emerging resistance and their optimal timing.

Another potential concern about using novel drugs such as bedaquiline in all patients is that the broader population scale of acquired resistance might leave many patients without effective treatment options. We did not identify any clinical pathways by which this scenario was likely to occur. In our model, RR-TB was treated similarly in both scenarios (dependent on DST coverage) and showed high enough rates of durable cure to cause preexisting RR-TB to decrease over time in the pan-TB scenario. Meanwhile, although we modeled retreatment with a rifamycin-based regimen for a substantial proportion of RS-TB cases that were not cured with initial pan-TB regimen treatment (some of which had resistance to B, X, or both), we projected similar levels of complex resistance with this approach as with continued use of a rifamycin-based first-line regimen followed by use of novel drugs after selection of rifampin resistance. This finding suggests that, even as resistance accumulated to components of a pan-TB regimen, most patients for whom the pan-TB regimen was ineffective would (once identified by DST) have existing rifamycin-based regimens as back-ups.

In reality, many of the characteristics of future pan-TB regimens are unknown. Although the pan-TB target regimen profile seeks to improve regimen duration, tolerability, and pharmacologic forgiveness, the effects of those improvements on adherence and ultimately effectiveness may be unpredictable and setting-dependent. Our model suggests that if the difference in effectiveness is small between a pan-TB regimen and the rifamycin-based alternative for treating RS-TB, then the health advantages of the pan-TB regimen will be smaller and contingent on maintaining a low prevalence of resistance to drugs in the pan-TB regimen. Moreover, even for a pan-TB regimen much more effective than the standard of care, unfavorable resistance-related regimen characteristics could eventually threaten that effectiveness. For a pan-TB regimen to continue to achieve high rates of cure in the long term, it needs to be constructed to guard against acquisition of resistance to all of its components or to ensure that regimen efficacy remains high in the presence of any forms of resistance that are likely to emerge.

Our results are limited by a lack of data on elements of the pan-TB regimen, in particular around the acquisition and effect of resistance. Those data are limited for current novel drugs such as bedaquiline and are based entirely on assumptions for other drugs that may compose future pan-TB regimens. We also approximated as zero the probability of acquiring resistance to multiple regimen components during 1 treatment course; however, there may be scenarios in which multiple drugs share resistance pathways and simultaneous acquisition is common. Further, our approach could be improved by the use of a transmission model, both for estimating the timescales of temporal trends and for estimating changes in absolute TB incidence as a result of more effective regimens. Our focus on cycles of transmission and proportions of patients with resistance could have led to an overestimate in the absolute prevalence of resistance generated by the pan-TB regimen, given that we did not fully account for reductions in transmission or potential disproportionate removal of DS-TB because of successful cure. Furthermore, our results are based on target regimen profiles, which assume that pan-TB regimens will be more effective than existing DS-TB regimens. We assume that if such regimens were available, they would be used at a minimum for patients with RR-TB, which leads to the counterintuitive standard-of-care scenario, where treatment outcomes for patients with RR-TB are better than for those with DS-TB.

Overall, we found that a pan-TB regimen adhering to the current target regimen profile is unlikely

to drive an increase in complex resistance to both novel and older TB drugs. However, pan-TB regimens that are associated with both frequent acquisition of resistance and large associated reductions in efficacy, as well as pan-TB regimens that only marginally outperform the existing standard of care when introduced, could have short-lived viability as pan-TB regimens, requiring either regimen replacement or reintroduction of DST to maintain the improved health outcomes that a pan-TB regimen would initially offer. As new regimens are scaled up, TB programs will need to ensure effective support for adherence and regimen completion, implement systems to identify and effectively treat patients who experience treatment failure or TB recurrence and conduct ongoing surveillance to track any rise in resistance to the new regimens.

C.F.M., T.S.R., and E.A.K. were funded for this work by the Bill and Melinda Gates Foundation (project no. INV-059518). C.F.M. was funded for other work by the Bill and Melinda Gates Foundation (grant no. TB MAC OPP1135288), the US National Institutes of Health (grant no. R-202309-71190), and Unitaid (grant no. 20193-3-ASCENT). T.S.R. reports other relevant funding from the World Health Organization. R.G.W. was funded for other work by the Wellcome Trust (grant no. 218261/Z/19/Z), the US National Institutes of Health (grant no. 1R01AI147321-01), the European and Developing Countries Clinical Trials Partnership (grant no. RIA208D-2505B), the UK Medical Research Council (grant CCF 17-7779 through the Bloomsbury SET [Science, Economics, Technology] Knowledge Exchange), the UK Economic and Social Research Council (grant no. ES/P008011/1), the Bill and Melinda Gates Foundation (grant nos. OPP1084276, OPP1135288, and INV-001754), and WHO. The funders had no role in the decision to submit the paper for publication. All authors declare no conflicts of interest.

Model code is available at [https://github.com/cfmcquaid/panTB\\_acquisition](https://github.com/cfmcquaid/panTB_acquisition).

Author contributions: C.F.M., T.S.R., T.C., N.A.M., and E.A.K. conceived and designed the study. C.F.M. did the modelling. C.F.M. and E.A.K. wrote a first draft of the article. All authors designed the methodology, critiqued the results, and contributed to editing the final draft.

## References

1. World Health Organization. Global tuberculosis report 2023. 2023 [cited 2024 Apr 12]. <https://www.who.int/teams/global-tuberculosis-programme/tb-reports/global-tuberculosis-report-2023>
2. Nyang'wa BT, Berry C, Kazounis E, Motta I, Parpieva N, Tigay Z, et al.; TB-PRACTECAL team. Short oral regimens for pulmonary rifampicin-resistant tuberculosis



- (TB-PRACTECAL): an open-label, randomised, controlled, phase 2B-3, multi-arm, multicentre, non-inferiority trial. *Lancet Respir Med*. 2024;12:117–28. [https://doi.org/10.1016/S2213-2600\(23\)00389-2](https://doi.org/10.1016/S2213-2600(23)00389-2)
3. Nuermberger EL, Chaisson RE. Restocking the tuberculosis drug arsenal. *Nat Med*. 2024;30:642–3. <https://doi.org/10.1038/s41591-024-02840-y>
  4. Treatment Action Group. Pipeline report 2023: tuberculosis treatment. 2023 [cited 2024 Apr 12]. [https://www.treatmentactiongroup.org/wp-content/uploads/2024/03/pipeline\\_TB\\_Treatment\\_2023\\_final.pdf](https://www.treatmentactiongroup.org/wp-content/uploads/2024/03/pipeline_TB_Treatment_2023_final.pdf)
  5. World Health Organization. Target regimen profiles for tuberculosis treatment, 2023 update. 2023 [cited 2024 Apr 14]. <https://www.who.int/publications/i/item/9789240081512>
  6. Arinaminpathy N, Gomez GB, Sachdeva KS, Rao R, Parmar M, Nair SA, et al. The potential deployment of a pan-tuberculosis drug regimen in India: a modelling analysis. *PLoS One*. 2020;15:e0230808. <https://doi.org/10.1371/journal.pone.0230808>
  7. Saluzzo F, Maria Cirillo D. Mind the gap. Rolling out new drug resistant tuberculosis regimens with limited diagnostic tools. *J Clin Tuberc Other Mycobact Dis*. 2023;32:100350. <https://doi.org/10.1016/j.jctube.2023.100350>
  8. Conradie F, Bagdasaryan TR, Borisov S, Howell P, Mikiashvili L, Ngubane N, et al.; ZeNix Trial Team. Bedaquiline-pretomanid-linezolid regimens for drug-resistant tuberculosis. *N Engl J Med*. 2022;387:810–23. <https://doi.org/10.1056/NEJMoa2119430>
  9. Nyang'wa BT, Berry C, Kazounis E, Motta I, Parpieva N, Tigay Z, et al.; TB-PRACTECAL Study Collaborators. A 24-week, all-oral regimen for rifampin-resistant tuberculosis. *N Engl J Med*. 2022;387:2331–43. <https://doi.org/10.1056/NEJMoa2117166>
  10. Foundation for the National Institutes of Health. PAN-TB, Project to Accelerate New Treatments for Tuberculosis. 2023 [cited 2024 Apr 11]. <https://fnih.org/our-programs/pan-tb-project-to-accelerate-new-treatments-for-tuberculosis>
  11. TB Alliance. TB Alliance launches five-country phase 2 clinical trial evaluating next-generation tb drug. 2023 [cited 2024 Apr 11]. <https://www.tballiance.org/news/tb-alliance-launches-five-country-phase-2-clinical-trial-evaluating-next-generation-tb-drug-0#:~:text=%E2%80%9CA%20universal%20TB%20medicine,and%20CEO%20of%20TB%20Alliance>
  12. Derendinger B, Dippenaar A, de Vos M, Huo S, Alberts R, Tadokera R, et al. Bedaquiline resistance in patients with drug-resistant tuberculosis in Cape Town, South Africa: a retrospective longitudinal cohort study. *Lancet Microbe*. 2023;4:e972–82. [https://doi.org/10.1016/S2666-5247\(23\)00172-6](https://doi.org/10.1016/S2666-5247(23)00172-6)
  13. World Health Organization. WHO consolidated guidelines on tuberculosis. Module 4: treatment – drug-resistant tuberculosis treatment, 2022 update [cited 2024 Apr 8]. <https://www.who.int/publications/i/item/9789240063129>
  14. Ryckman TS, Schumacher SG, Lienhardt C, Sweeney S, Dowdy DW, Mirzayev F, et al. Economic implications of novel regimens for tuberculosis treatment in three high-burden countries: a modelling analysis. *Lancet Glob Health*. 2024;12:e995–1004. [https://doi.org/10.1016/S2214-109X\(24\)00088-3](https://doi.org/10.1016/S2214-109X(24)00088-3)
  15. Borgdorff MW, Sebek M, Geskus RB, Kremer K, Kalisvaart N, van Soolingen D. The incubation period distribution of tuberculosis estimated with a molecular epidemiological approach. *Int J Epidemiol*. 2011;40:964–70. <https://doi.org/10.1093/ije/dyr058>
  16. Law I, Floyd K, African TB; African TB Prevalence Survey Group. National tuberculosis prevalence surveys in Africa, 2008–2016: an overview of results and lessons learned. *Trop Med Int Health*. 2020;25:1308–27. <https://doi.org/10.1111/tmi.13485>
  17. Onozaki I, Law I, Sismanidis C, Zignol M, Glaziou P, Floyd K. National tuberculosis prevalence surveys in Asia, 1990–2012: an overview of results and lessons learned. *Trop Med Int Health*. 2015;20:1128–45. <https://doi.org/10.1111/tmi.12534>
  18. Horton KC, Richards AS, Emery JC, Esmail H, Houben RMGJ. Reevaluating progression and pathways following *Mycobacterium tuberculosis* infection within the spectrum of tuberculosis. *Proc Natl Acad Sci U S A*. 2023;120:e2221186120. <https://doi.org/10.1073/pnas.2221186120>
  19. Ismail NA, Aono A, Borroni E, Cirillo DM, Desmaretz C, Hasan R, et al. A multimethod, multicountry evaluation of breakpoints for bedaquiline resistance determination. *Antimicrob Agents Chemother*. 2020;64:e00479–20. <https://doi.org/10.1128/AAC.00479-20>
  20. Liu Y, Gao M, Du J, Wang L, Gao J, Shu W, et al. Reduced susceptibility of *Mycobacterium tuberculosis* to bedaquiline during antituberculosis treatment and its correlation with clinical outcomes in China. *Clin Infect Dis*. 2021;73:e3391–7. <https://doi.org/10.1093/cid/ciaa1002>
  21. Perumal R, Bionghi N, Nimmo C, Letsalo M, Cummings MJ, Hopson M, et al. Baseline and treatment-emergent bedaquiline resistance in drug-resistant tuberculosis: a systematic review and meta-analysis. *Eur Respir J*. 2023;62:2300639. <https://doi.org/10.1183/13993003.00639-2023>
  22. Timm J, Bateson A, Solanki P, Paleckyte A, Witney AA, Rofael SAD, et al. Baseline and acquired resistance to bedaquiline, linezolid and pretomanid, and impact on treatment outcomes in four tuberculosis clinical trials containing pretomanid. *PLOS Glob Public Health*. 2023;3:e0002283. <https://doi.org/10.1371/journal.pgph.0002283>
  23. Li S, Tan Y, Deng Y, Bai G, Huang M, Shang Y, et al. The emerging threat of fluoroquinolone-, bedaquiline-, and linezolid-resistant *Mycobacterium tuberculosis* in China: observations on surveillance data. *J Infect Public Health*. 2024;17:137–42. <https://doi.org/10.1016/j.jiph.2023.11.018>
  24. Chesov E, Chesov D, Maurer FP, Andres S, Utpatel C, Barilar I, et al. Emergence of bedaquiline resistance in a high tuberculosis burden country. *Eur Respir J*. 2022;59:2100621. <https://doi.org/10.1183/13993003.00621-2021>
  25. Cegielski JP, Dalton T, Yagui M, Wattanaamornkiet W, Volchenkov GV, Via LE, et al.; Global Preserving Effective TB Treatment Study (PETTS) Investigators. Extensive drug resistance acquired during treatment of multidrug-resistant tuberculosis. *Clin Infect Dis*. 2014;59:1049–63. <https://doi.org/10.1093/cid/ciu572>

---

Address for correspondence: C. Finn McQuaid, London School of Hygiene and Tropical Medicine, Keppel St, London WC1E 7HT, UK; email: finn.mcquaid@lshtm.ac.uk

# Potential of Pan-Tuberculosis Treatment to Drive Emergence of Novel Resistance

## Appendix

### Supplementary Methods

We estimated the proportion durably cured by different regimens in a separate piece of work (T.S. Ryckman et al, unpub. data, 2024), which followed a similar approach to that of Ryckman et al. (1) and is reproduced in brief here and available at GitHub (<https://github.com/rycktessman/pan-tb-modeling>), with parameter values shown in Appendix Table 2. This captured regimen assignment and initiation, pre-treatment losses to follow-up which varied by regimen assignment, and outcomes of treatment, and ultimately resulted in an estimation of the proportion of diagnosed patients who achieved durable microbiological cure. The probability of durable cure depended on regimen efficacy, duration, ease of adherence, forgiveness (i.e., the extent to which durable cure can occur despite missed doses), and resistance. Efficacy was defined as the proportion of patients curable by the regimen under optimal conditions of perfect adherence, retention in care, and complete initial regimen susceptibility; for the standard of care, efficacy estimates were based on clinical trial data (2,3). Starting from each regimen's efficacy, the probability of cure was adjusted downward for resistance to drugs in the regimen, early treatment discontinuation, and missed doses while on treatment. Discontinuation and adherence with standard of care regimens were based on programmatic data and control groups in trials of adherence-improving interventions, respectively. The impact of adherence varied by regimen forgiveness (4); for more forgiving regimens, more doses could be intermittently missed without affecting the probability of cure.

The hypothetical pan-TB regimen was informed by the WHO's minimal target regimen profile and ongoing regimen development efforts (5). In particular, the oral regimen was modeled as easier to adhere to, at least as forgiving, of shorter duration (3.5 months), and

as efficacious and safe as HRZE – and consisting of drugs with a lower population-wide prevalence of resistance than rifampin.

Durable cure and resistance acquisition rates depended on the resistance phenotype given different regimens (Appendix Table 3). When resistance to all drugs was present, the potential for cure by individualized regimens was parameterized based on longer regimens used for RR-TB before use of bedaquiline, pretomanid, or linezolid (“conventional second-line regimen”). When susceptibility to either B or X was retained (i.e., for RR/BR-TB or RR/XR-TB), the inclusion of that drug in an “X-based” or “B-based” individualized regimen would restore half of the incremental potential for cure that BX would offer for fully-susceptible TB. For a B-based individualized regimen (and similarly for an X-based regimen), the probability of acquiring resistance to B was estimated as the mean of the risk of acquisition of resistance during treatment of (i) drug susceptible TB with BX and (ii) XR-TB with BX.

## Supplementary Results

Parameter values used for this illustration are the mean values we calculated previously (Appendix Table 1). For this set of parameter values, the pan-TB scenario resulted in fewer deaths, less treatment failure, and less drug resistance; however, in both scenarios, most TB that persisted after retreatment was DS-TB.

The likelihood of durable cure is higher under the pan-TB scenario irrespective of underlying prevalence of resistance in the population. This is a result of assumptions about the high rate of durable cure for the BX regimen, and the relatively minimal effect of existing resistance to regimen components on this. The likelihood of both increases as the prevalence of RR-TB increases (when RR-TB is likely to be undertreated in the standard of care scenario) and decreases as the prevalence of B resistance increases (when BR-TB is likely to be undertreated in the Pan-TB scenario).

## References

1. Ryckman TS, Schumacher SG, Lienhardt C, Sweeney S, Dowdy DW, Mirzayev F, et al. Economic implications of novel regimens for tuberculosis treatment in three high-burden countries: a modelling analysis. *Lancet Glob Health*. 2024;12:e995–1004. [PubMed](https://doi.org/10.1016/S2214-109X(24)00088-3)  
[https://doi.org/10.1016/S2214-109X\(24\)00088-3](https://doi.org/10.1016/S2214-109X(24)00088-3)

2. Gegia M, Winters N, Benedetti A, van Soolingen D, Menzies D. Treatment of isoniazid-resistant tuberculosis with first-line drugs: a systematic review and meta-analysis. *Lancet Infect Dis.* 2017;17:223–34. [PubMed https://doi.org/10.1016/S1473-3099\(16\)30407-8](https://doi.org/10.1016/S1473-3099(16)30407-8)
3. Nyang'wa B-T, Berry C, Kazounis E, Motta I, Parpieva N, Tigay Z, et al.; TB-PRACTECAL Study Collaborators. A 24-week, all-oral regimen for rifampin-resistant tuberculosis. *N Engl J Med.* 2022;387:2331–43. [PubMed https://doi.org/10.1056/NEJMoa2117166](https://doi.org/10.1056/NEJMoa2117166)
4. Imperial MZ, Nahid P, Phillips PPJ, Davies GR, Fielding K, Hanna D, et al. A patient-level pooled analysis of treatment-shortening regimens for drug-susceptible pulmonary tuberculosis. *Nat Med.* 2018;24:1708–15. [PubMed https://doi.org/10.1038/s41591-018-0224-2](https://doi.org/10.1038/s41591-018-0224-2)
5. World Health Organization. Target regimen profiles for tuberculosis treatment. 2023 Nov [cited 2023 Dec 7]. <https://www.who.int/publications-detail-redirect/9789240081512>
6. World Health Organization. Global tuberculosis report 2023. 2023 [cited 2024 Apr 12]. <https://www.who.int/teams/global-tuberculosis-programme/tb-reports/global-tuberculosis-report-2023>
7. Cox H, Kebede Y, Allamuratova S, Ismailov G, Davletmuratova Z, Byrnes G, et al. Tuberculosis recurrence and mortality after successful treatment: impact of drug resistance. *PLoS Med.* 2006;3:e384. [PubMed https://doi.org/10.1371/journal.pmed.0030384](https://doi.org/10.1371/journal.pmed.0030384)
8. He GX, Xie YG, Wang LX, Borgdorff MW, van der Werf MJ, Fan JH, et al. Follow-up of patients with multidrug resistant tuberculosis four years after standardized first-line drug treatment. *PLoS One.* 2010;5:e10799. [PubMed https://doi.org/10.1371/journal.pone.0010799](https://doi.org/10.1371/journal.pone.0010799)
9. Timm J, Bateson A, Solanki P, Paleckyte A, Witney AA, Rofael SAD, et al. Baseline and acquired resistance to bedaquiline, linezolid and pretomanid, and impact on treatment outcomes in four tuberculosis clinical trials containing pretomanid. *PLOS Glob Public Health.* 2023;3:e0002283. [PubMed https://doi.org/10.1371/journal.pgph.0002283](https://doi.org/10.1371/journal.pgph.0002283)
10. Menzies D, Benedetti A, Paydar A, Martin I, Royce S, Pai M, et al. Effect of duration and intermittency of rifampin on tuberculosis treatment outcomes: a systematic review and meta-analysis. *PLoS Med.* 2009;6:e1000146. [PubMed https://doi.org/10.1371/journal.pmed.1000146](https://doi.org/10.1371/journal.pmed.1000146)
11. Kendall EA, Azman AS, Cobelens FG, Dowdy DW. MDR-TB treatment as prevention: The projected population-level impact of expanded treatment for multidrug-resistant tuberculosis. *PLoS One.* 2017;12:e0172748. [PubMed https://doi.org/10.1371/journal.pone.0172748](https://doi.org/10.1371/journal.pone.0172748)
12. Perumal R, Bionghi N, Nimmo C, Letsoalo M, Cummings MJ, Hopson M, et al. Baseline and treatment-emergent bedaquiline resistance in drug-resistant tuberculosis: a systematic review

- and meta-analysis. *Eur Respir J.* 2023;62:2300639. [PubMed](#)  
<https://doi.org/10.1183/13993003.00639-2023>
13. Ismail NA, Omar SV, Moultrie H, Bhyat Z, Conradie F, Enwerem M, et al. Assessment of epidemiological and genetic characteristics and clinical outcomes of resistance to bedaquiline in patients treated for rifampicin-resistant tuberculosis: a cross-sectional and longitudinal study. *Lancet Infect Dis.* 2022;22:496–506. [PubMed](#) [https://doi.org/10.1016/S1473-3099\(21\)00470-9](https://doi.org/10.1016/S1473-3099(21)00470-9)
  14. Mallick JS, Nair P, Abbew ET, Van Deun A, Decroo T. Acquired bedaquiline resistance during the treatment of drug-resistant tuberculosis: a systematic review. *JAC Antimicrob Resist.* 2022;4:dlac029. **PMID: 35356403**
  15. Lew W, Pai M, Oxlade O, Martin D, Menzies D. Initial drug resistance and tuberculosis treatment outcomes: systematic review and meta-analysis. *Ann Intern Med.* 2008;149:123–34. [PubMed](#)  
<https://doi.org/10.7326/0003-4819-149-2-200807150-00008>
  16. Li S, Tan Y, Deng Y, Bai G, Huang M, Shang Y, et al. The emerging threat of fluoroquinolone-, bedaquiline-, and linezolid-resistant *Mycobacterium tuberculosis* in China: Observations on surveillance data. *J Infect Public Health.* 2024;17:137–42. [PubMed](#)  
<https://doi.org/10.1016/j.jiph.2023.11.018>
  17. Derendinger B, Dippenaar A, de Vos M, Huo S, Alberts R, Tadokera R, et al. Bedaquiline resistance in patients with drug-resistant tuberculosis in Cape Town, South Africa: a retrospective longitudinal cohort study. *Lancet Microbe.* 2023;4:e972–82. [PubMed](#)  
[https://doi.org/10.1016/S2666-5247\(23\)00172-6](https://doi.org/10.1016/S2666-5247(23)00172-6)
  18. Ismail NA, Aono A, Borroni E, Cirillo DM, Desmaretz C, Hasan R, et al. A multimethod, multicountry evaluation of breakpoints for bedaquiline resistance determination. *Antimicrob Agents Chemother.* 2020;64:e00479–20. [PubMed](#) <https://doi.org/10.1128/AAC.00479-20>
  19. Liu Y, Gao M, Du J, Wang L, Gao J, Shu W, et al. Reduced susceptibility of *Mycobacterium tuberculosis* to bedaquiline during antituberculosis treatment and its correlation with clinical outcomes in China. *Clin Infect Dis.* 2021;73:e3391–7. [PubMed](#)  
<https://doi.org/10.1093/cid/ciaa1002>
  20. Subbaraman R, Nathavitharana RR, Satyanarayana S, Pai M, Thomas BE, Chadha VK, et al. The tuberculosis cascade of care in India's public sector: a systematic review and meta-analysis. *PLoS Med.* 2016;13:e1002149. [PubMed](#) <https://doi.org/10.1371/journal.pmed.1002149>
  21. Naidoo P, Theron G, Rangaka MX, Chihota VN, Vaughan L, Brey ZO, et al. The South African tuberculosis care cascade: estimated losses and methodological challenges. *J Infect Dis.* 2017;216(suppl\_7):S702–13. [PubMed](#) <https://doi.org/10.1093/infdis/jix335>

22. Cox H, Dickson-Hall L, Ndjeka N, Van't Hoog A, Grant A, Cobelens F, et al. Delays and loss to follow-up before treatment of drug-resistant tuberculosis following implementation of Xpert MTB/RIF in South Africa: A retrospective cohort study. *PLoS Med.* 2017;14:e1002238. [PubMed https://doi.org/10.1371/journal.pmed.1002238](https://doi.org/10.1371/journal.pmed.1002238)
23. Kruk ME, Schwalbe NR, Aguiar CA. Timing of default from tuberculosis treatment: a systematic review. *Trop Med Int Health.* 2008;13:703–12. [PubMed https://doi.org/10.1111/j.1365-3156.2008.02042.x](https://doi.org/10.1111/j.1365-3156.2008.02042.x)
24. Collaborative Group for the Meta-Analysis of Individual Patient Data in MDR-TB treatment–2017, Ahmad N, Ahuja SD, Akkerman OW, Alffenaar JWC, Anderson LF, et al. Treatment correlates of successful outcomes in pulmonary multidrug-resistant tuberculosis: an individual patient data meta-analysis. *Lancet.* 2018;392:821–34. **PMID: 30215381**
25. World Health Organization. Consolidated guidelines on tuberculosis: drug-susceptible tuberculosis treatment. 2022 [cited 2023 Mar 16]. <https://www.who.int/publications-detail-redirect/9789240048126>
26. Stagg HR, Lewis JJ, Liu X, Huan S, Jiang S, Chin DP, et al. Temporal factors and missed doses of tuberculosis treatment. A causal associations approach to analyses of digital adherence data. *Ann Am Thorac Soc.* 2020;17:438–49. [PubMed https://doi.org/10.1513/AnnalsATS.201905-394OC](https://doi.org/10.1513/AnnalsATS.201905-394OC)
27. Maraba N, Orrell C, Chetty-Makkan CM, Velen K, Mukora R, Page-Shipp L, et al. Evaluation of adherence monitoring system using evriMED with a differentiated response compared to standard of care among drug-sensitive TB patients in three provinces in South Africa: a protocol for a cluster randomised control trial. *Trials.* 2021;22:389. [PubMed https://doi.org/10.1186/s13063-021-05337-y](https://doi.org/10.1186/s13063-021-05337-y)
28. Liu X, Thompson J, Dong H, Sweeney S, Li X, Yuan Y, et al. Digital adherence technologies to improve tuberculosis treatment outcomes in China: a cluster-randomised superiority trial. *Lancet Glob Health.* 2023;11:e693–703. [PubMed https://doi.org/10.1016/S2214-109X\(23\)00068-2](https://doi.org/10.1016/S2214-109X(23)00068-2)

**Appendix Table 1.** Parameter values and sources.

Parameter	Description	Value*	Source
<b>Regimen effectiveness</b>			
E <sub>R</sub>	Proportion of DS-TB durably cured by rifamycin-based regimen	70.9% [58.5- 79.3%]	(T.S. Ryckman et al, unpub. data, 2024)
E <sub>BX</sub>	Proportion of DS-TB or RR-TB durably cured by pan-TB regimen	76.3% [68.8- 83.1%]	(T.S. Ryckman et al, unpub. data, 2024), based on a 2-mo pan-TB regimen
E <sub>ind</sub>	Proportion of TB durably cured by individualized regimen	43.9% [33.7- 53.6%]	(T.S. Ryckman et al, unpub. data, 2024)
CFR	Proportion of poor outcomes (i.e., no durable cure) that result in death	48.3% [40.3- 52.5%]	(6), uncertainty taken from regional variation
<b>Impact of resistance on cure</b>			
P <sub>R</sub>	Risk ratio of cure for rifamycin-based regimen given initial RR-TB	0.35 [0.22- 0.5]	(T.S. Ryckman et al, unpub. data, 2024) (7,8)
P <sub>B</sub>	Risk ratio of cure for pan-TB regimen given initial BR-TB	0.75 [0.54- 0.91]	(T.S. Ryckman et al, unpub. data, 2024) (9)
P <sub>X</sub>	Risk ratio of cure for pan-TB regimen given initial XR-TB	0.75 [0.54- 0.91]	Assumed to be similar to P <sub>B</sub>
P <sub>BX</sub>	Risk ratio of cure for pan-TB regimen given BR- and XR-TB	0.35 [0.22- 0.5]	Assumed to be similar to P <sub>R</sub>
<b>Resistance acquisition</b>			
S <sub>R</sub>	Probability of acquired resistance to R after rifamycin-based treatment (if initially RS-TB)	0.6% [0.3- 1.2%]	(10,11)
S <sub>B</sub>	Probability of acquired resistance to B after pan-TB treatment (if initially BS and XS)	1% [0.3%–2.3%]	(9, 12–14), based on observational studies and trial results; point estimate reflects where these two intersect
S <sub>X</sub>	Probability of acquired resistance to X after pan-TB treatment (if initially BS and XS)	1% [0.3%–2.3%]	Assumed to be similar to S <sub>B</sub> , based on (2)
Q	Risk ratio for B or X resistance acquisition given pre-existing X or B resistance, respectively	7.5 [4.0- 16.0]	Assumption based on (2,15) for other drugs
<b>Drug susceptibility testing</b>			
R <sub>_soc<sub>new</sub></sub>	R DST for new patients, standard of care scenario	44.10% [33.1%–55.1%]	(6) weighted by the proportion with bacteriological confirmation with an assumed 25% uncertainty interval
BX <sub>_soc<sub>new</sub></sub>	B and X DST coverage for new patients with known RR-TB, standard of care scenario	49.0% [36.8%–61.3%]	(6) using fluoroquinolone testing coverage with an assumed 25% uncertainty interval
R <sub>_soc<sub>retR</sub></sub>	R DST coverage for retreatment patients previously treated with R, standard of care scenario	80.0% [60.0%–100%]	Assumed higher than R <sub>_soc<sub>new</sub></sub>
R <sub>_soc<sub>retBX</sub></sub>	R DST coverage for retreatment patients previously treated with BX, standard of care scenario	100%	Assumption
BX <sub>_soc<sub>retR</sub></sub>	B and X DST coverage for retreatment patients previously treated with R with known RR-TB, standard of care scenario	49.0% [36.8%–61.3%]	Assumed to be similar to new patients in the standard of care scenario
BX <sub>_soc<sub>retBX</sub></sub>	B and X DST coverage for retreatment patients previously treated with BX with known RR-TB, standard of care scenario	60.0% [45.0%–75.0%]	Assumption, higher than retreatment patients in the standard of care scenario

Parameter	Description	Value*	Source
R_pan	R DST coverage for retreatment patients, pan-TB scenario	44.1% [33.1%–55.1%]	Assumed to be similar to new patients in the standard of care scenario
BX_pan	B and X DST coverage for retreatment patients with known RR-TB, pan-TB scenario	0% or 49.0% [36.8%–61.3%]	Assumed to be similar to new patients in the standard of care scenario
Baseline prevalence of resistance			
preVDS	Initial prevalence of DS-TB	95.70%	(6)
preVRR	Initial prevalence of RR-TB	4.20%	(6) weighting new and previously treated patients
preVBR	Initial prevalence of BR-TB	0.20%	(9,16)
preVXR	Initial prevalence of XR-TB	0.00%	Assumption
preVRRBR	Initial prevalence of RR/BR-TB	0.09%	(12,17–19)
preVRRXR	Initial prevalence of RR/XR-TB	0.00%	Assumption
preVBRXR	Initial prevalence of BR/XR-TB	0.00%	Assumption
preVRRBRXR	Initial prevalence of RR/BR/XR-TB	0.00%	Assumption

\*All parameters were assumed to follow  $\beta$  distribution (fitted to the median and 95% uncertainty interval shown) except for the parameter Q, which followed a uniform distribution.  
DS-TB = drug susceptible tuberculosis, RR-TB = rifampin-resistant tuberculosis, BR-TB = diarylquinoline resistant tuberculosis, XR-TB = tuberculosis resistant to additional novel drug X.

**Appendix Table 2.** Parameters used to estimate durable cure rates shown in Appendix Table 1.

Parameter	Regimen	Estimate [95% uncertainty interval]	Distribution used for parameter sampling*	Sources/Notes
Pre-treatment LTFU if assigned to RS SOC or Pan-TB regimen	–	13% [8-19%]	Normal (mean 0.134, sdev 0.028)	Subbaraman et al. 2016 (20); Naidoo et al. 2017 (21)
Additional pre-treatment LTFU if assigned to a separate care pathway (RR SOC or individualized regimen)	–	16% [7-27%]	Beta (8, 42)	Based on Subbaraman et al. 2016 (20), Cox et al. 2017 (22), and WHO notifications data (6)
Weekly probability of early discontinuation	India	0.13% [0.08-0.18%]	Beta (26, 19923)	WHO data from a range of countries (6) Assumed to be constant over time based on Kruk et al. 2008 (23)
	South Africa	0.41% [0.31-0.52%]	Beta (58, 14168)	
	Philippines	0.14% [0.08-0.20%]	Beta (20, 14824)	
Efficacy	RS-TB SOC	95% [93-97%]	Same as RS SOC, not modeled independently	Gegia et al. 2017 (2)
	Pan-TB TRP	95% [93-97%]		
	Individualized	75% [67-83%]		
Duration	RS-TB SOC	24 weeks	NA – no uncertainty in duration was modeled	WHO guidelines (25)
	Pan-TB	14 weeks		WHO target regimen profile (minimal target) (5)
	Individualized	18 months		Based on RR regimens pre-BPaL/BPaLM
% patients w/ < 70% adherence	RS-TB SOC	38% [28-48%]	Multinomial (100, 0.379)	Median of control groups in 3 adherence-improving intervention studies (26–28)
	Pan-TB	14% [12-16%]	Multinomial (100, 0.14)	Best of control groups in 3 adherence-improving 3 intervention studies (26–28), based on minimal TRP target of better tolerability than the standard of care (5)
	Individualized	38% [28-48%]	Same as RR-TB	Assumed same as BPaL/BPaLM



Parameter	Regimen	Estimate [95% uncertainty interval]	Distribution used for parameter sampling*	Sources/Notes
% patients w/ 70-90% adherence	RS-TB SOC	31% [18-46%]	Multinomial (100, 0.312)	Median of control groups in 3 adherence-improving intervention studies (26–28)
	Pan-TB	34% [31-38%]	Multinomial (100, 0.35)	Best of control groups in 3 adherence-improving 3 intervention studies (26–28), based on minimal TRP target of better tolerability than the standard of care (5)
	Individualized	31% [18-46%]	Same as RR-TB	Assumed same as HRZE.
% patients w/ ≥ 90% adherence	RS-TB SOC	31% [22-40%]	Multinomial (100, 0.309)	Median of control groups in 3 adherence-improving intervention studies (26–28)
	Pan-TB	51% [47-55%]	Multinomial (100, 0.51)	Best of intervention groups in 3 adherence-improving 3 intervention studies (26–28), based on minimal TRP target of better tolerability than the standard of care (5)
	Individualized	31% [22-40%]	Same as RR-TB	Assumed same as HRZE.
Forgiveness (nonadherence threshold above which probability of cure < efficacy)	RS-TB SOC	10%	NA – no uncertainty was modeled in the forgiveness thresholds, but uncertainty was included in the relative probability of cure above vs. below the forgiveness threshold (next row).	Imperial et al. (4)
	Pan-TB oral	15%		Value from WHO minimal TRP (5)
	Individualized	10%		Assumed same as HRZE.
Relative probability of cure if missed doses exceed the forgiveness threshold	All	82% [63-94%]	Simulated using the confidence intervals from Imperial et al. (4), assuming Wald distributions.	Imperial et al. (4)

\*RS = rifampin-susceptible; "SOC" = standard of care; "HRZE" = 6 months of isoniazid, rifampin, pyrazinamide, and ethambutol (the standard of care regimen for RS-TB); "BPALM" = 6 months of bedaquiline, pretomanid, linezolid, and moxifloxacin (the standard of care regimen for RR-TB). "TRP" = target regimen profile.

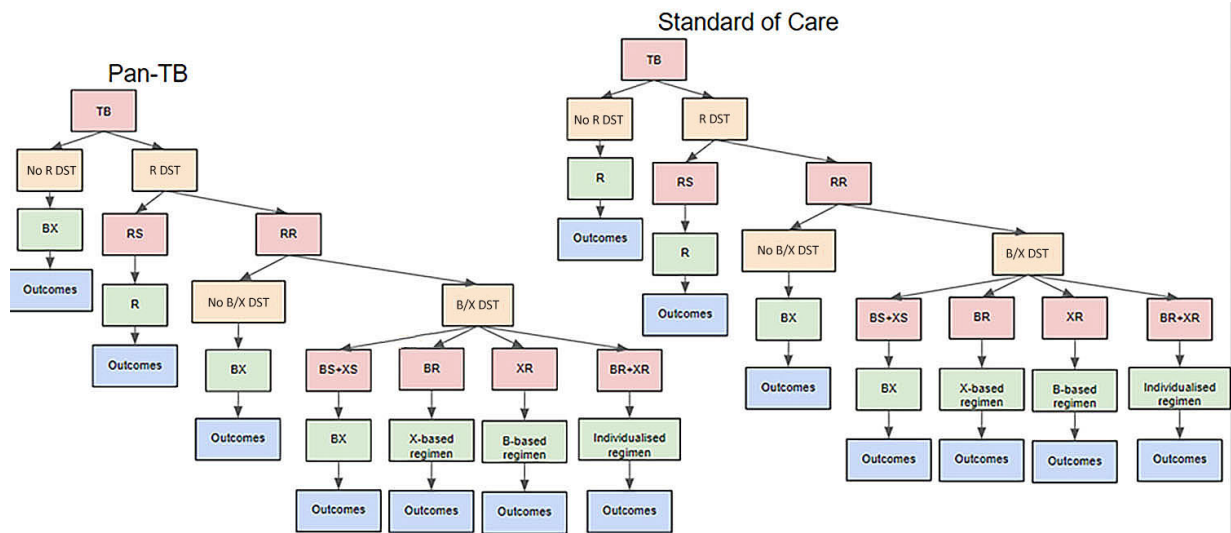
Both point estimates/means and uncertainty intervals have been estimated from the sources indicated in the "Sources/Notes" column, unless otherwise noted.

\*For the uncertainty distributions (column 4), the normal distribution is displayed with mean and standard deviation in parentheses, the beta distribution is displayed with alpha and beta in parentheses, where the mean of a beta distribution is equal to alpha divided by the sum of alpha and beta, the multinomial distribution is displayed with size and probability parameters in parentheses, and the gamma distribution is displayed with shape and scale parameters in parentheses.

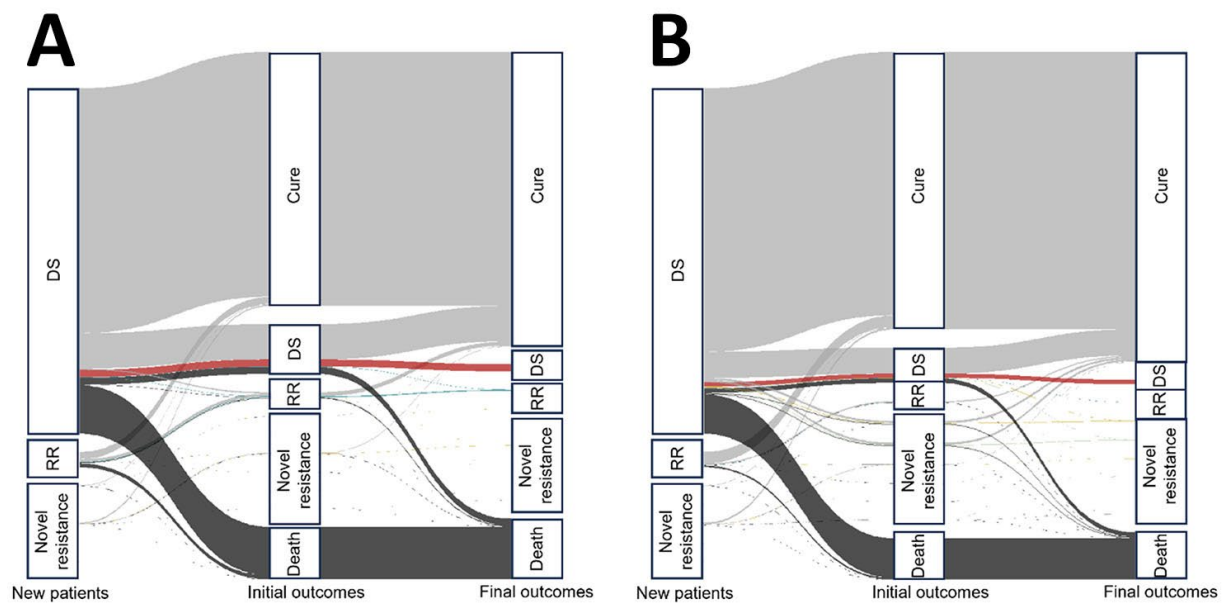
**Appendix Table 3.** Durable cure and acquisition of resistance for different resistance phenotypes given different regimens (assuming mean parameter values from Appendix Table 1).

Outcome	Regimen	Resistance type							
		DS-TB	RR-TB	BR-TB	XR-TB	RR+ BR-TB	RR+ XR-TB	BR+ XR-TB	RR+BR+ XR-TB
Durable cure	R	$E_R = 70.9\%$	$E_R \cdot P_R = 24.8\%$	$E_R = 70.9\%$	$E_R = 70.9\%$	$E_R \cdot P_R = 24.8\%$	$E_R \cdot P_R = 24.8\%$	$E_R = 70.9\%$	$E_R \cdot P_R = 24.8\%$
	BX	$E_{BX} = 79.7\%$	$E_{BX} = 79.7\%$	$E_{BX} \cdot P_B = 59.8\%$	$E_{BX} \cdot P_X = 59.8\%$	$E_{BX} \cdot P_B = 59.8\%$	$E_{BX} \cdot P_X = 59.8\%$	$E_{BX} \cdot P_{BX} = 27.9\%$	$E_{BX} \cdot P_{BX} = 27.9\%$
	B-based	–	–	–	–	–	69.70%	–	–
	X-based	–	–	–	–	–	–	–	–
	Conv 2nd-line	–	–	–	–	–	–	–	$E_{ind} = 43.9\%$
RR Acquisition	R	$S_R = 0.6\%$	–	$S_R = 0.6\%$	$S_R = 0.6\%$	–	–	$S_R = 0.6\%$	–
BR Acquisition	BX	$S_B = 1.0\%$	$S_B = 1.0\%$	–	$S_B \cdot Q = 7.5\%$	–	$S_B \cdot Q = 7.5\%$	–	–
	B-based	–	–	–	–	–	4.30%	–	–
XR Acquisition	BX	$S_X = 1.0\%$	$S_X = 1.0\%$	$S_X \cdot Q = 7.5\%$	–	$S_X \cdot Q = 7.5\%$	–	–	–
	X-based	–	–	–	–	4.30%	–	–	–

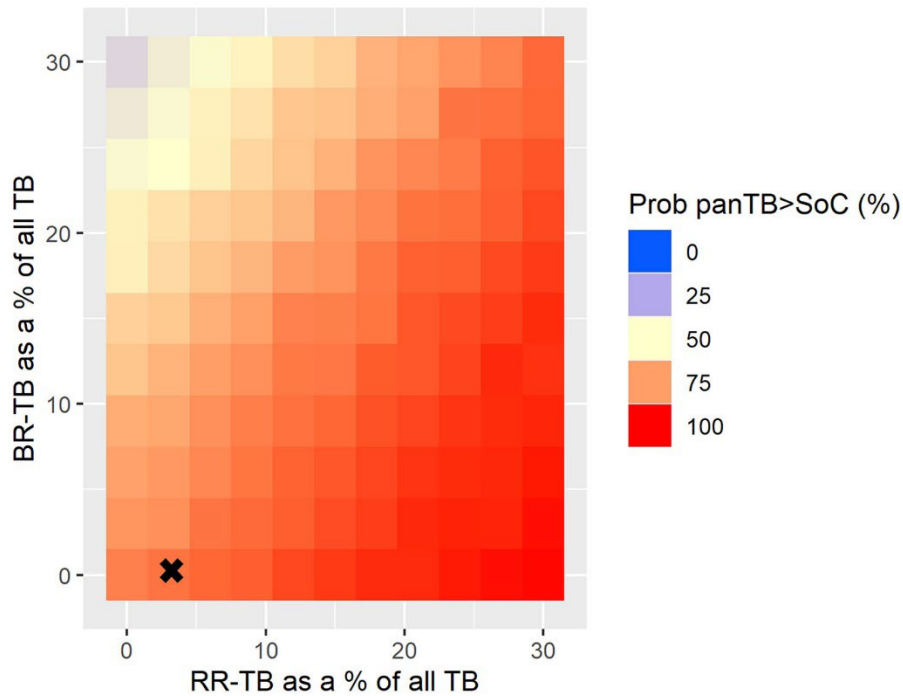
\*TB = tuberculosis, DS-TB = drug-susceptible tuberculosis, RR-TB = rifampin-resistant tuberculosis, BR-TB = diarylquinoline resistant tuberculosis, XR-TB = tuberculosis resistant to additional novel drug X,  $E_R$  = proportion of DS-TB durably cured by rifamycin-based regimen,  $E_{BX}$  = proportion of DS-TB durably cured by pan-TB regimen,  $E_{ind}$  = proportion of TB durably cured by individualized regimen,  $P_R$  = Risk ratio of cure for rifamycin-based regimen given initial RR-TB,  $P_B$  = Risk ratio of cure for pan-TB regimen given initial BR-TB,  $P_X$  = Risk ratio of cure for pan-TB regimen given initial XR-TB,  $P_{BX}$  = Risk ratio of cure for pan-TB regimen given BR- and XR-TB,  $S_R$  = Probability of acquired RR-TB after rifamycin-based treatment (if initially RS-TB),  $S_B$  = Probability of acquired BR-TB after pan-TB treatment (if initially BS and XS),  $S_X$  = Probability of acquired XR-TB after pan-TB treatment (if initially BS and XS), Q = Risk ratio for B or X resistance acquisition given pre-existing X or B resistance, respectively.



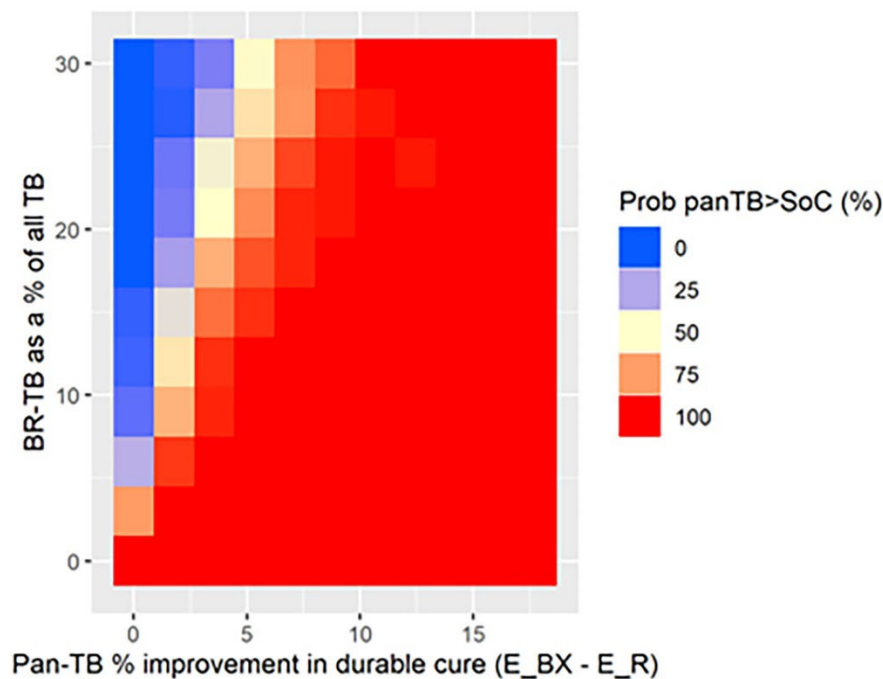
**Appendix Figure 1.** Treatment pathways for previously treated patients, comparing the Pan-TB scenario (left) with standard of care (right). TB = tuberculosis, RS-TB = rifampin-susceptible tuberculosis, RR-TB = rifampin-resistant tuberculosis, BR-TB = diarylquinoline resistant tuberculosis, XR-TB = tuberculosis resistant to additional novel drug X, R DST = rifampin drug susceptibility testing, B/X DST = diarylquinoline and other novel drug(s) susceptibility testing, R = rifampin-based regimen, BX = pan-TB regimen.



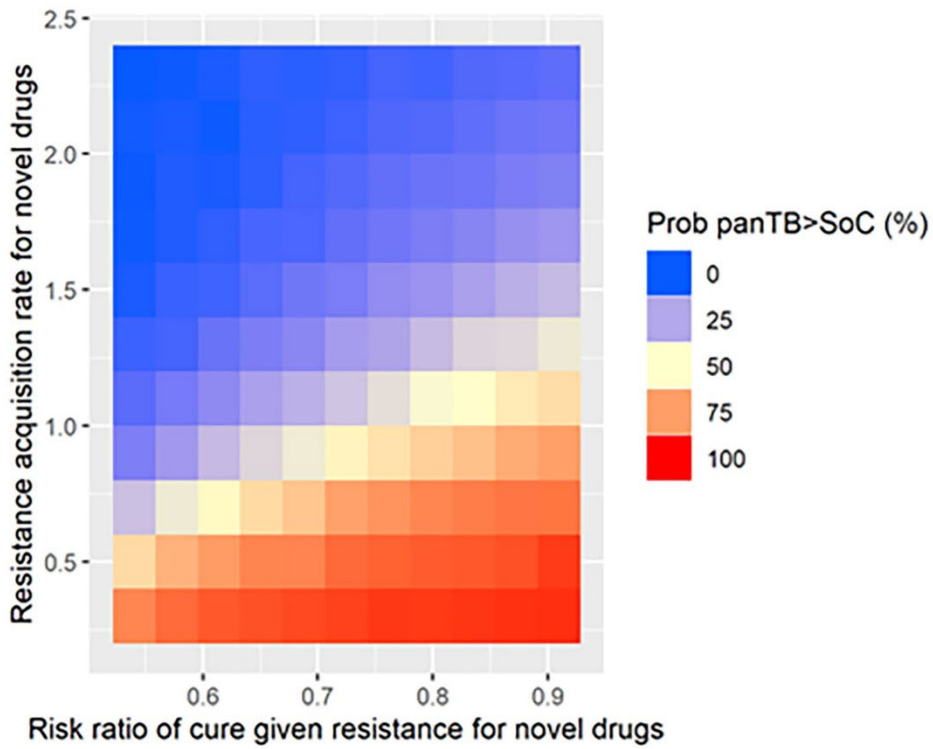
**Appendix Figure 2.** Sankey diagram using mean parameter values for the (a) standard of care and (b) pan-TB scenario. Colors indicate the final treatment outcome. DS = drug susceptible tuberculosis, RR = rifampin-resistant tuberculosis, Novel resistance = tuberculosis resistant to a diarylquinoline and/or novel drug X.



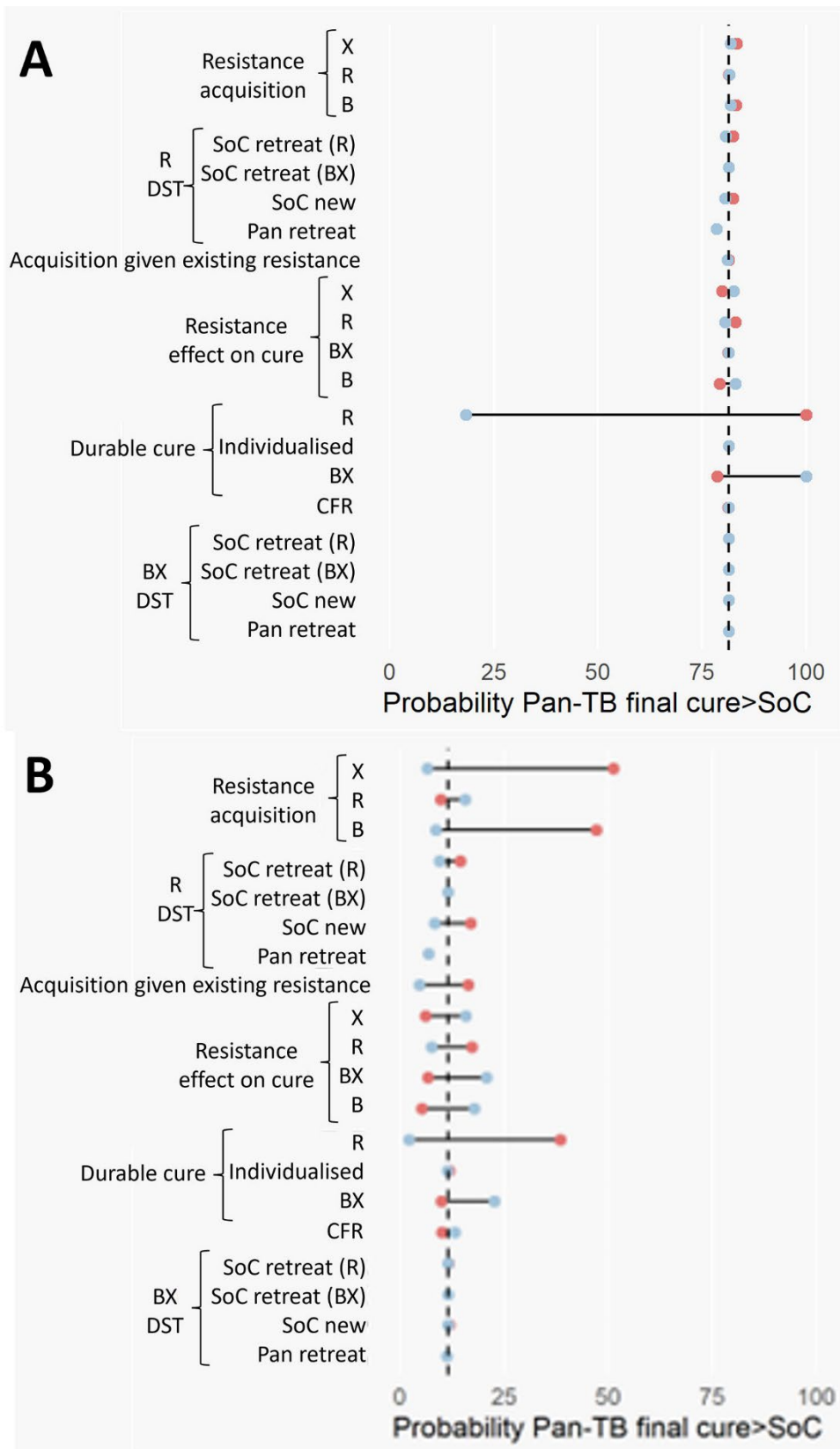
**Appendix Figure 3.** Probability that pan-TB leads to a higher durable cure rate than the standard of care after 1 cohort of patients for varying initial prevalence of resistance. Red indicates where pan-TB TB performs better, blue where SoC performs better. Both RR-TB and BR-TB are varied as a proportion of all TB, where RR+BR-TB is the product of both. No other forms of resistance are initially present. X indicates current estimated prevalence of resistance globally.



**Appendix Figure 4.** Effect of difference in cure rates on relative performance of regimens for varying prevalence of B resistance.



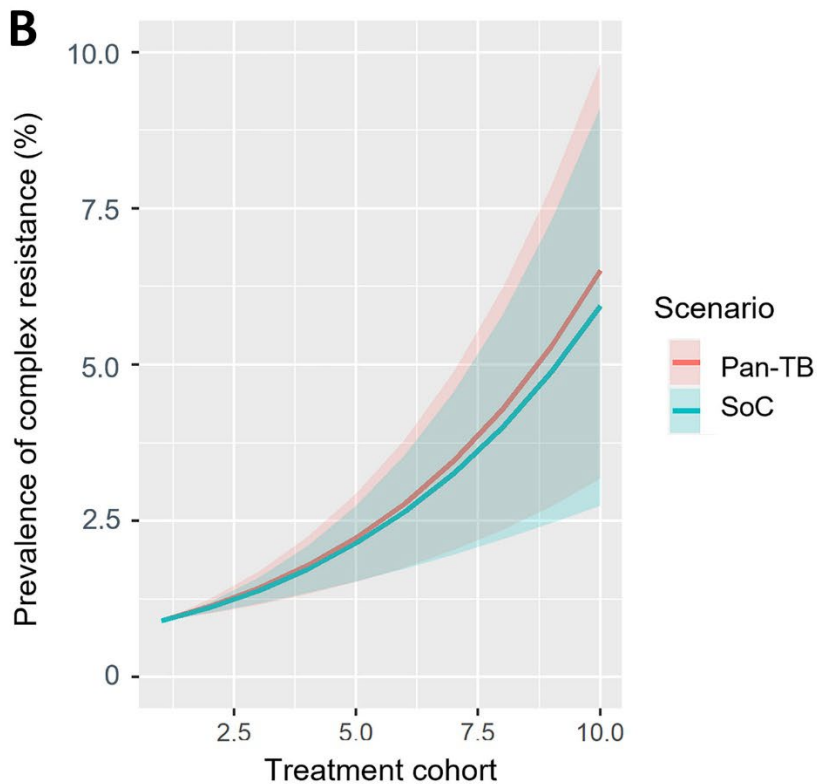
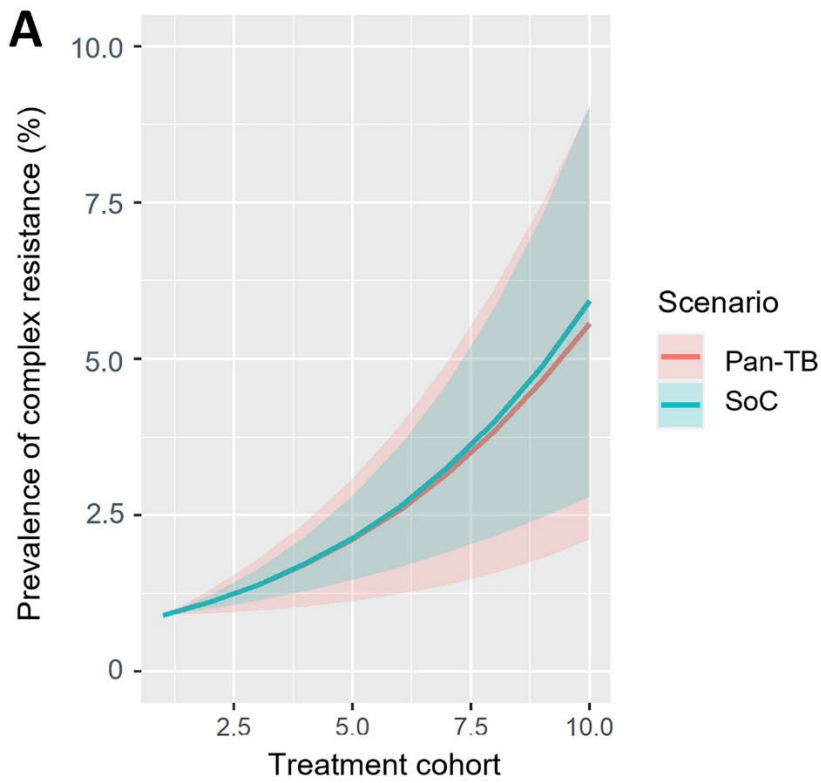
**Appendix Figure 5.** Probability that the pan-TB scenario leads to higher durable cure compared to the standard of care after 10 cohorts. Red indicates where pan-TB TB performs better, blue where SoC performs better. Note parameters values (resistance acquisition rate and risk ratio of cure) are varied for both novel drug types simultaneously.



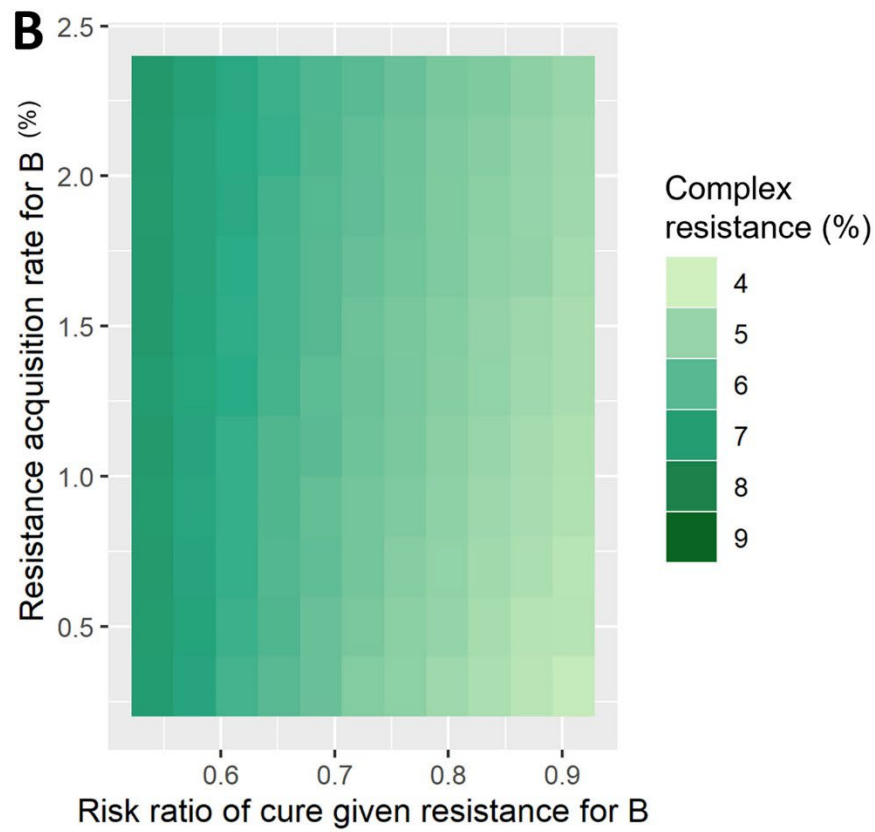
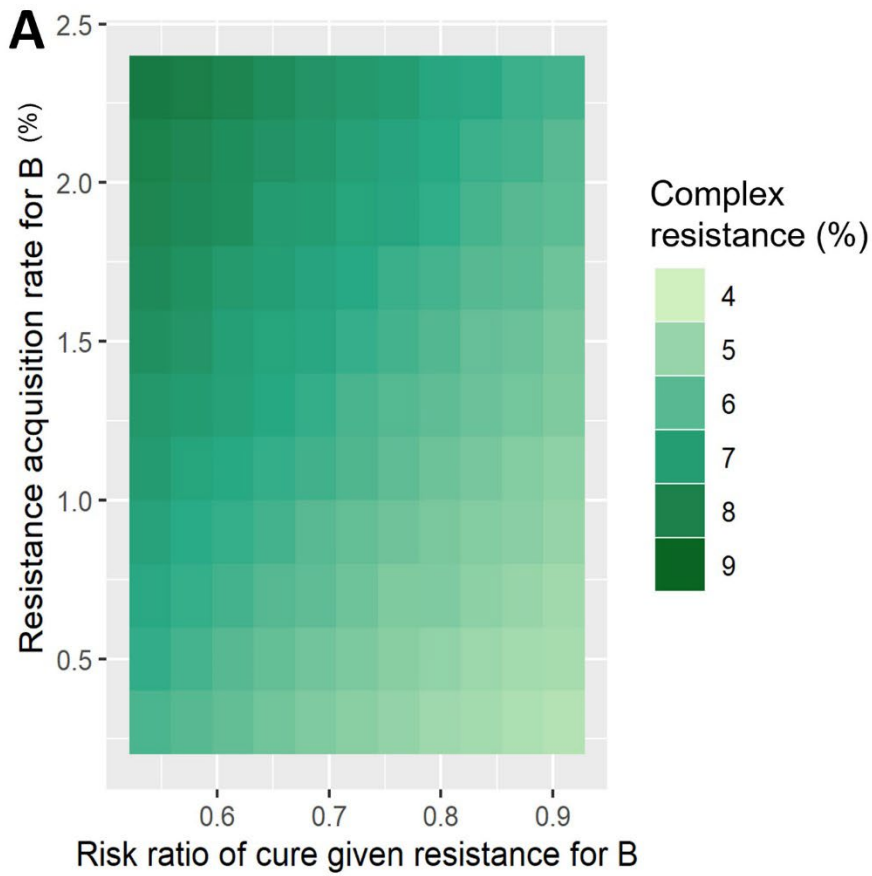
**Appendix Figure 6.** Univariate sensitivity analysis, sampling a parameter set and fixing each parameter in turn at the extremes of its 95% uncertainty interval, where the mean estimate and upper bound of the uncertainty interval for acquisition of resistance to novel drugs have been increased. We based these new estimates on high rates of resistance acquisition seen under programmatic

conditions (e.g., in centers that were not green-light approved), such that the probability of acquired resistance to B after pan-TB treatment (if initially BS and XS) = 2.3% [0.3%–8%], and the probability of acquired resistance to X after pan-TB treatment (if initially BS and XS) = 1% [0.3%–8%].

Comparing likelihood over that durable cure in the pan-TB scenario is greater than the standard of care scenario after (a) one cohort of treatment (b) ten cohorts. Blue circles represent low parameter values, red circles high parameter values.



**Appendix Figure 7.** Prevalence of “complex” resistance to both R and either B and/or X over multiple cohorts where (a) B/X DST availability for retreatment patients with known RR-TB is zero, or (b) R DST availability for retreatment patients is 100%. Shaded areas indicate 95% uncertainty intervals. DS-TB = drug susceptible tuberculosis, RR-TB = rifampin-resistant tuberculosis, BR-TB = diarylquinoline resistant tuberculosis, XR-TB = tuberculosis resistant to novel drug X.



**Appendix Figure 8.** Prevalence of “complex” resistance both to R and to either B and/or X after 10 cohorts for (a) standard of care and (b) pan-TB.