



SPEC® CINT2006 Result

Copyright 2006-2017 Standard Performance Evaluation Corporation

Dell Inc.

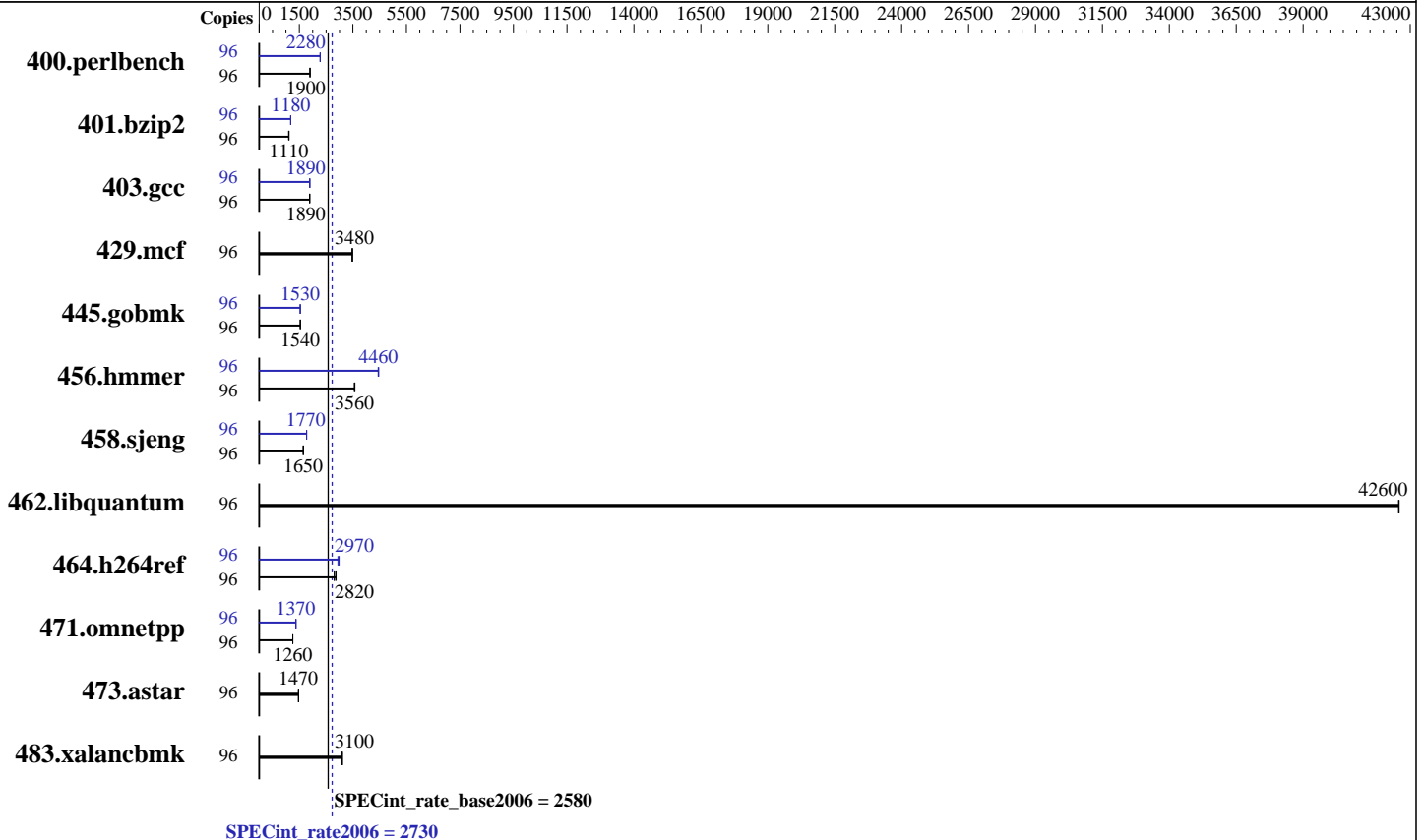
PowerEdge R940
(Intel Xeon Gold 6126, 2.60 GHz)

SPECint®_rate2006 = 2730

SPECint_rate_base2006 = 2580

CPU2006 license: 55
Test sponsor: Dell Inc.
Tested by: Dell Inc.

Test date: Oct-2017
Hardware Availability: Sep-2017
Software Availability: Apr-2017



Hardware

CPU Name: Intel Xeon Gold 6126
 CPU Characteristics: Intel Turbo Boost Technology up to 3.70 GHz
 CPU MHz: 2600
 FPU: Integrated
 CPU(s) enabled: 48 cores, 4 chips, 12 cores/chip, 2 threads/core
 CPU(s) orderable: 2,4 chip
 Primary Cache: 32 KB I + 32 KB D on chip per core
 Secondary Cache: 1 MB I+D on chip per core
 L3 Cache: 19.25 MB I+D on chip per chip
 Other Cache: None
 Memory: 768 GB (48 x 16 GB 2Rx8 PC4-2666V-R)
 Disk Subsystem: 1 x 900 GB 15K RPM SAS12
 Other Hardware: None

Software

Operating System: SUSE Linux Enterprise Server 12 (x86_64) SP2 4.4.21-69-default
 Compiler: C/C++: Version 17.0.3.191 of Intel C/C++ Compiler for Linux
 Auto Parallel: Yes
 File System: xfs
 System State: Run level 3 (multi-user)
 Base Pointers: 32-bit
 Peak Pointers: 32/64-bit
 Other Software: Microquill SmartHeap V10.2



SPEC CINT2006 Result

Copyright 2006-2017 Standard Performance Evaluation Corporation

Dell Inc.

PowerEdge R940
(Intel Xeon Gold 6126, 2.60 GHz)

SPECint_rate2006 = 2730

SPECint_rate_base2006 = 2580

CPU2006 license: 55
Test sponsor: Dell Inc.
Tested by: Dell Inc.

Test date: Oct-2017
Hardware Availability: Sep-2017
Software Availability: Apr-2017

Results Table

Benchmark	Base							Peak						
	Copies	Seconds	Ratio	Seconds	Ratio	Seconds	Ratio	Copies	Seconds	Ratio	Seconds	Ratio	Seconds	Ratio
400.perlbench	96	493	1900	495	1900	<u>494</u>	<u>1900</u>	96	411	2280	<u>411</u>	<u>2280</u>	412	2270
401.bzip2	96	833	1110	843	1100	<u>833</u>	<u>1110</u>	96	<u>787</u>	<u>1180</u>	786	1180	787	1180
403.gcc	96	409	1890	<u>409</u>	<u>1890</u>	410	1880	96	410	1890	408	1890	<u>410</u>	<u>1890</u>
429.mcf	96	251	3490	<u>252</u>	<u>3480</u>	252	3470	96	251	3490	<u>252</u>	<u>3480</u>	252	3470
445.gobmk	96	<u>656</u>	<u>1540</u>	656	1540	655	1540	96	657	1530	656	1530	<u>656</u>	<u>1530</u>
456.hammer	96	251	3580	<u>251</u>	<u>3560</u>	252	3560	96	<u>201</u>	<u>4460</u>	201	4450	201	4460
458.sjeng	96	704	1650	<u>705</u>	<u>1650</u>	706	1650	96	657	1770	<u>656</u>	<u>1770</u>	654	1770
462.libquantum	96	46.7	42600	<u>46.7</u>	<u>42600</u>	46.7	42600	96	46.7	42600	<u>46.7</u>	<u>42600</u>	46.7	42600
464.h264ref	96	<u>754</u>	<u>2820</u>	739	2870	758	2800	96	722	2940	<u>715</u>	<u>2970</u>	712	2990
471.omnetpp	96	478	1250	<u>478</u>	<u>1260</u>	477	1260	96	437	1370	<u>438</u>	<u>1370</u>	438	1370
473.astar	96	459	1470	<u>459</u>	<u>1470</u>	457	1470	96	459	1470	<u>459</u>	<u>1470</u>	457	1470
483.xalancbmk	96	214	3090	<u>214</u>	<u>3100</u>	213	3110	96	214	3090	<u>214</u>	<u>3100</u>	213	3110

Results appear in the order in which they were run. Bold underlined text indicates a median measurement.

Submit Notes

The numactl mechanism was used to bind copies to processors. The config file option 'submit' was used to generate numactl commands to bind each copy to a specific processor. For details, please see the config file.

Operating System Notes

Kernel boot parameter: nohz_full=1-95
Stack size set to unlimited using "ulimit -s unlimited"

Platform Notes

BIOS settings:
Logical Processor Enabled
Virtualization Technology Disabled
Sub NUMA Cluster Enabled
System Profile set to Custom
CPU Performance set to Maximum Performance
C1E Disabled
C States set to Autonomous
Uncore Frequency set to Dynamic
Memory Patrol Scrub Disabled
Energy Efficiency Policy set to Performance
CPU Interconnect Bus Link Power Management Disabled
PCI ASPM L1 Link Power Management Disabled
Sysinfo program /home/cpu2006/config/sysinfo.rev6993
Revision 6993 of 2015-11-06 (b5e8d4b4eb51ed28d7f98696cbe290c1)
running on linux-92x1 Tue Oct 24 16:20:39 2017

Continued on next page



SPEC CINT2006 Result

Copyright 2006-2017 Standard Performance Evaluation Corporation

Dell Inc.

SPECint_rate2006 = 2730

PowerEdge R940
(Intel Xeon Gold 6126, 2.60 GHz)

SPECint_rate_base2006 = 2580

CPU2006 license: 55
Test sponsor: Dell Inc.
Tested by: Dell Inc.

Test date: Oct-2017
Hardware Availability: Sep-2017
Software Availability: Apr-2017

Platform Notes (Continued)

This section contains SUT (System Under Test) info as seen by some common utilities. To remove or add to this section, see: <http://www.spec.org/cpu2006/Docs/config.html#sysinfo>

```
From /proc/cpuinfo
model name : Intel(R) Xeon(R) Gold 6126 CPU @ 2.60GHz
 4 "physical id"s (chips)
 96 "processors"
cores, siblings (Caution: counting these is hw and system dependent. The
following excerpts from /proc/cpuinfo might not be reliable. Use with
caution.)
cpu cores : 12
siblings : 24
physical 0: cores 0 1 3 4 5 6 8 9 10 11 12 13
physical 1: cores 0 1 3 4 5 6 8 9 10 11 12 13
physical 2: cores 0 1 3 4 5 6 8 9 10 11 12 13
physical 3: cores 0 1 3 4 5 6 8 9 10 11 12 13
cache size : 19712 KB
```

```
From /proc/meminfo
MemTotal: 791223344 kB
HugePages_Total: 0
Hugepagesize: 2048 kB
```

```
/usr/bin/lsb_release -d
SUSE Linux Enterprise Server 12 SP2
```

```
From /etc/*release* /etc/*version*
SuSE-release:
SUSE Linux Enterprise Server 12 (x86_64)
VERSION = 12
PATCHLEVEL = 2
# This file is deprecated and will be removed in a future service pack or
release.
# Please check /etc/os-release for details about this release.
os-release:
NAME="SLES"
VERSION="12-SP2"
VERSION_ID="12.2"
PRETTY_NAME="SUSE Linux Enterprise Server 12 SP2"
ID="sles"
ANSI_COLOR="0;32"
CPE_NAME="cpe:/o:suse:sles:12:sp2"
```

```
uname -a:
Linux linux-92x1 4.4.21-69-default #1 SMP Tue Oct 25 10:58:20 UTC 2016
(9464f67) x86_64 x86_64 x86_64 GNU/Linux
```

```
run-level 3 Oct 24 16:20
```

```
SPEC is set to: /home/cpu2006
```

Continued on next page



SPEC CINT2006 Result

Copyright 2006-2017 Standard Performance Evaluation Corporation

Dell Inc.

PowerEdge R940
(Intel Xeon Gold 6126, 2.60 GHz)

SPECint_rate2006 = 2730

SPECint_rate_base2006 = 2580

CPU2006 license: 55
Test sponsor: Dell Inc.
Tested by: Dell Inc.

Test date: Oct-2017
Hardware Availability: Sep-2017
Software Availability: Apr-2017

Platform Notes (Continued)

Filesystem	Type	Size	Used	Avail	Use%	Mounted on
/dev/sda4	xfs	796G	17G	779G	3%	/home

Additional information from dmidecode:

Warning: Use caution when you interpret this section. The 'dmidecode' program reads system data which is "intended to allow hardware to be accurately determined", but the intent may not be met, as there are frequent changes to hardware, firmware, and the "DMTF SMBIOS" standard.

BIOS Dell Inc. 1.1.7 08/10/2017

Memory:
48x 00CE063200CE M393A2K43BB1-CTD 16 GB 2 rank 2666 MHz

(End of data from sysinfo program)

General Notes

Environment variables set by runspec before the start of the run:
LD_LIBRARY_PATH = "/home/cpu2006/lib/ia32:/home/cpu2006/lib/intel64:/home/cpu2006/sh10.2"

Binaries compiled on a system with 1x Intel Core i7-4790 CPU + 32GB RAM
memory using Redhat Enterprise Linux 7.2
Transparent Huge Pages enabled by default
Filesystem page cache cleared with:
shell invocation of 'sync; echo 3 > /proc/sys/vm/drop_caches' prior to run
runspec command invoked through numactl i.e.:
numactl --interleave=all runspec <etc>

Base Compiler Invocation

C benchmarks:
icc -m32 -L/opt/intel/compilers_and_libraries_2017/linux/lib/ia32

C++ benchmarks:
icpc -m32 -L/opt/intel/compilers_and_libraries_2017/linux/lib/ia32

Base Portability Flags

400.perlbench: -D_FILE_OFFSET_BITS=64 -DSPEC_CPU_LINUX_IA32
401.bzip2: -D_FILE_OFFSET_BITS=64
403.gcc: -D_FILE_OFFSET_BITS=64
429.mcf: -D_FILE_OFFSET_BITS=64
445.gobmk: -D_FILE_OFFSET_BITS=64
456.hmmer: -D_FILE_OFFSET_BITS=64
458.sjeng: -D_FILE_OFFSET_BITS=64
462.libquantum: -D_FILE_OFFSET_BITS=64 -DSPEC_CPU_LINUX

Continued on next page



SPEC CINT2006 Result

Copyright 2006-2017 Standard Performance Evaluation Corporation

Dell Inc.

PowerEdge R940
(Intel Xeon Gold 6126, 2.60 GHz)

SPECint_rate2006 = 2730

SPECint_rate_base2006 = 2580

CPU2006 license: 55
Test sponsor: Dell Inc.
Tested by: Dell Inc.

Test date: Oct-2017
Hardware Availability: Sep-2017
Software Availability: Apr-2017

Base Portability Flags (Continued)

464.h264ref: -D_FILE_OFFSET_BITS=64
471.omnetpp: -D_FILE_OFFSET_BITS=64
473.astar: -D_FILE_OFFSET_BITS=64
483.xalancbmk: -D_FILE_OFFSET_BITS=64 -DSPEC_CPU_LINUX

Base Optimization Flags

C benchmarks:
-xCORE-AVX512 -ipo -O3 -no-prec-div -qopt-prefetch
-qopt-mem-layout-trans=3

C++ benchmarks:
-xCORE-AVX512 -ipo -O3 -no-prec-div -qopt-prefetch
-qopt-mem-layout-trans=3 -Wl,-z,muldefs -L/sh10.2 -lsmartheap

Base Other Flags

C benchmarks:
403.gcc: -Dalloca=_alloca

Peak Compiler Invocation

C benchmarks (except as noted below):
icc -m32 -L/opt/intel/compilers_and_libraries_2017/linux/lib/ia32

400.perlbench: icc -m64
401.bzip2: icc -m64
456.hmmer: icc -m64
458.sjeng: icc -m64

C++ benchmarks:
icpc -m32 -L/opt/intel/compilers_and_libraries_2017/linux/lib/ia32

Peak Portability Flags

400.perlbench: -DSPEC_CPU_LP64 -DSPEC_CPU_LINUX_X64
401.bzip2: -DSPEC_CPU_LP64

Continued on next page



SPEC CINT2006 Result

Copyright 2006-2017 Standard Performance Evaluation Corporation

Dell Inc.

SPECint_rate2006 = 2730

PowerEdge R940
(Intel Xeon Gold 6126, 2.60 GHz)

SPECint_rate_base2006 = 2580

CPU2006 license: 55

Test date: Oct-2017

Test sponsor: Dell Inc.

Hardware Availability: Sep-2017

Tested by: Dell Inc.

Software Availability: Apr-2017

Peak Portability Flags (Continued)

```

403.gcc: -D_FILE_OFFSET_BITS=64
429.mcf: -D_FILE_OFFSET_BITS=64
445.gobmk: -D_FILE_OFFSET_BITS=64
456.hmmer: -DSPEC_CPU_LP64
458.sjeng: -DSPEC_CPU_LP64
462.libquantum: -D_FILE_OFFSET_BITS=64 -DSPEC_CPU_LINUX
464.h264ref: -D_FILE_OFFSET_BITS=64
471.omnetpp: -D_FILE_OFFSET_BITS=64
473.aster: -D_FILE_OFFSET_BITS=64
483.xalancbmk: -D_FILE_OFFSET_BITS=64 -DSPEC_CPU_LINUX

```

Peak Optimization Flags

C benchmarks:

```

400.perlbench: -prof-gen(pass 1) -prof-use(pass 2) -xCORE-AVX512(pass 2)
               -par-num-threads=1(pass 1) -ipo(pass 2) -O3(pass 2)
               -no-prec-div(pass 2) -auto-ilp32 -qopt-mem-layout-trans=3

```

```

401.bzip2: -prof-gen(pass 1) -prof-use(pass 2) -xCORE-AVX512(pass 2)
            -par-num-threads=1(pass 1) -ipo(pass 2) -O3(pass 2)
            -no-prec-div(pass 2) -qopt-prefetch -auto-ilp32
            -qopt-mem-layout-trans=3

```

```

403.gcc: -xCORE-AVX512 -ipo -O3 -no-prec-div
         -qopt-mem-layout-trans=3

```

429.mcf: basepeak = yes

```

445.gobmk: -prof-gen(pass 1) -prof-use(pass 2) -xCORE-AVX512(pass 2)
            -par-num-threads=1(pass 1) -ipo(pass 2) -O3(pass 2)
            -no-prec-div(pass 2) -qopt-mem-layout-trans=3

```

```

456.hmmer: -xCORE-AVX512 -ipo -O3 -no-prec-div -unroll2 -auto-ilp32
           -qopt-mem-layout-trans=3

```

```

458.sjeng: -prof-gen(pass 1) -prof-use(pass 2) -xCORE-AVX512(pass 2)
            -par-num-threads=1(pass 1) -ipo(pass 2) -O3(pass 2)
            -no-prec-div(pass 2) -unroll4 -auto-ilp32
            -qopt-mem-layout-trans=3

```

462.libquantum: basepeak = yes

```

464.h264ref: -prof-gen(pass 1) -prof-use(pass 2) -xCORE-AVX512(pass 2)
              -par-num-threads=1(pass 1) -ipo(pass 2) -O3(pass 2)
              -no-prec-div(pass 2) -unroll2 -qopt-mem-layout-trans=3

```

Continued on next page



SPEC CINT2006 Result

Copyright 2006-2017 Standard Performance Evaluation Corporation

Dell Inc.

PowerEdge R940
(Intel Xeon Gold 6126, 2.60 GHz)

SPECint_rate2006 = 2730

SPECint_rate_base2006 = 2580

CPU2006 license: 55
Test sponsor: Dell Inc.
Tested by: Dell Inc.

Test date: Oct-2017
Hardware Availability: Sep-2017
Software Availability: Apr-2017

Peak Optimization Flags (Continued)

C++ benchmarks:

```
471.omnetpp: -prof-gen(pass 1) -prof-use(pass 2) -xCORE-AVX512(pass 2)
             -par-num-threads=1(pass 1) -ipo(pass 2) -O3(pass 2)
             -no-prec-div(pass 2)
             -qopt-ra-region-strategy=block
             -qopt-mem-layout-trans=3 -Wl,-z,muldefs
             -L/shl0.2 -lsmartheap
```

473.astar: basepeak = yes

483.xalancbmk: basepeak = yes

Peak Other Flags

C benchmarks:

```
403.gcc: -Dalloca=_alloca
```

The flags files that were used to format this result can be browsed at

<http://www.spec.org/cpu2006/flags/Intel-ic17.0-official-linux64-revF.html>
<http://www.spec.org/cpu2006/flags/Dell-Platform-Flags-PowerEdge14G-revD.20171221.html>

You can also download the XML flags sources by saving the following links:

<http://www.spec.org/cpu2006/flags/Intel-ic17.0-official-linux64-revF.xml>
<http://www.spec.org/cpu2006/flags/Dell-Platform-Flags-PowerEdge14G-revD.20171221.xml>

SPEC and SPECint are registered trademarks of the Standard Performance Evaluation Corporation. All other brand and product names appearing in this result are trademarks or registered trademarks of their respective holders.

For questions about this result, please contact the tester.
For other inquiries, please contact webmaster@spec.org.

Tested with SPEC CPU2006 v1.2.
Report generated on Thu Dec 21 17:10:38 2017 by SPEC CPU2006 PS/PDF formatter v6932.
Originally published on 21 December 2017.