



# SPEC® CINT2006 Result

Copyright 2006-2017 Standard Performance Evaluation Corporation

## Dell Inc.

PowerEdge R940  
(Intel Xeon Gold 6132, 2.60 GHz)

**SPECint®\_rate2006 = 3160**

**SPECint\_rate\_base2006 = 2990**

CPU2006 license: 55

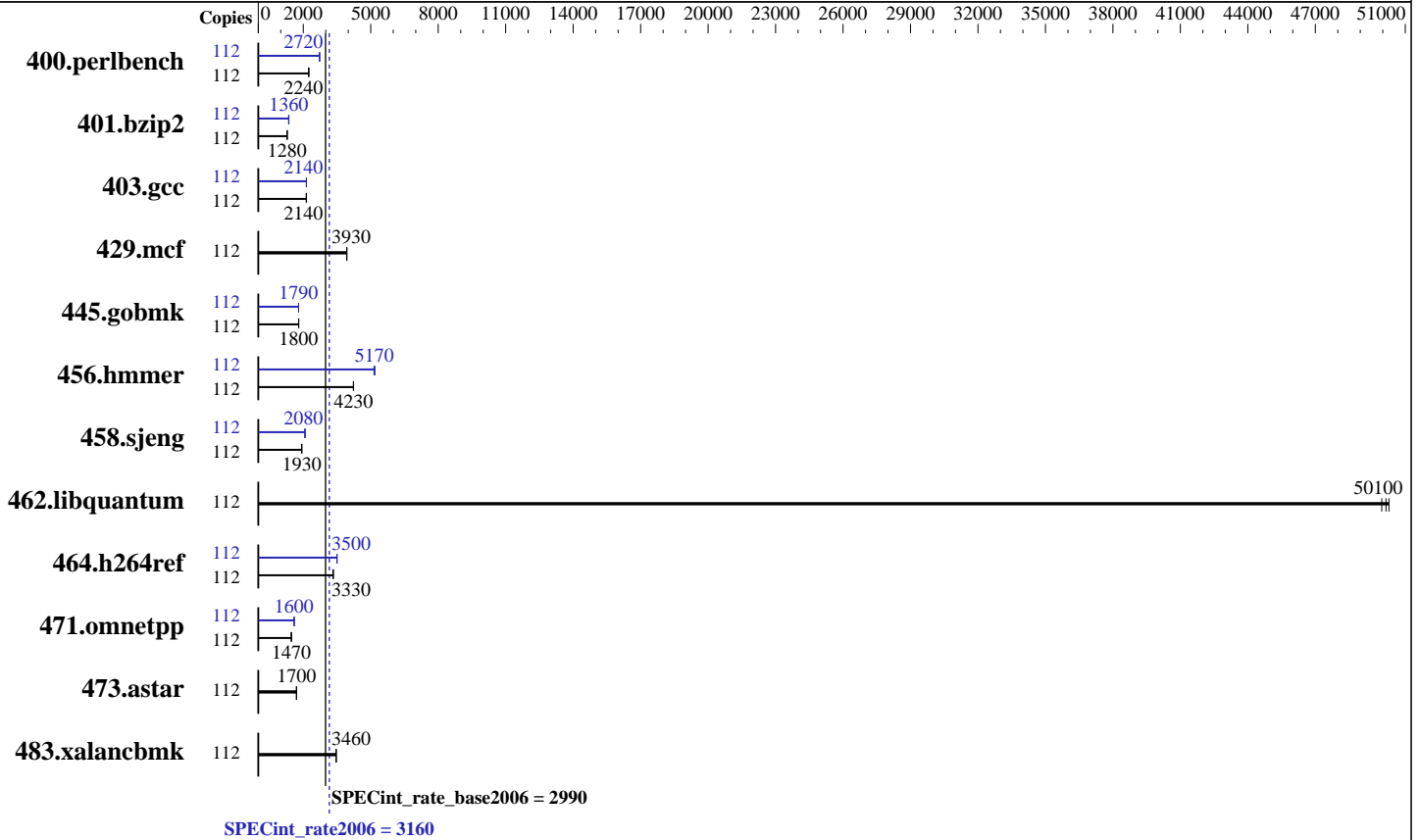
Test sponsor: Dell Inc.

Tested by: Dell Inc.

Test date: Oct-2017

Hardware Availability: Sep-2017

Software Availability: Apr-2017



### Hardware

CPU Name: Intel Xeon Gold 6132  
 CPU Characteristics: Intel Turbo Boost Technology up to 3.70 GHz  
 CPU MHz: 2600  
 FPU: Integrated  
 CPU(s) enabled: 56 cores, 4 chips, 14 cores/chip, 2 threads/core  
 CPU(s) orderable: 2,4 chip  
 Primary Cache: 32 KB I + 32 KB D on chip per core  
 Secondary Cache: 1 MB I+D on chip per core  
 L3 Cache: 19.25 MB I+D on chip per chip  
 Other Cache: None  
 Memory: 768 GB (48 x 16 GB 2Rx8 PC4-2666V-R)  
 Disk Subsystem: 1 x 900 GB 15K RPM SAS12  
 Other Hardware: None

### Software

Operating System: SUSE Linux Enterprise Server 12 (x86\_64) SP2 4.4.21-69-default  
 Compiler: C/C++: Version 17.0.3.191 of Intel C/C++ Compiler for Linux  
 Auto Parallel: Yes  
 File System: xfs  
 System State: Run level 3 (multi-user)  
 Base Pointers: 32-bit  
 Peak Pointers: 32/64-bit  
 Other Software: Microquill SmartHeap V10.2



# SPEC CINT2006 Result

Copyright 2006-2017 Standard Performance Evaluation Corporation

## Dell Inc.

PowerEdge R940  
(Intel Xeon Gold 6132, 2.60 GHz)

SPECint\_rate2006 = 3160

SPECint\_rate\_base2006 = 2990

CPU2006 license: 55  
Test sponsor: Dell Inc.  
Tested by: Dell Inc.

Test date: Oct-2017  
Hardware Availability: Sep-2017  
Software Availability: Apr-2017

## Results Table

Benchmark	Base							Peak						
	Copies	Seconds	Ratio	Seconds	Ratio	Seconds	Ratio	Copies	Seconds	Ratio	Seconds	Ratio	Seconds	Ratio
400.perlbench	112	487	2240	<b>488</b>	<b>2240</b>	488	2240	112	402	2720	401	2730	<b>402</b>	<b>2720</b>
401.bzip2	112	844	1280	838	1290	<b>843</b>	<b>1280</b>	112	794	1360	<b>798</b>	<b>1360</b>	801	1350
403.gcc	112	<b>422</b>	<b>2140</b>	422	2140	421	2140	112	422	2140	<b>421</b>	<b>2140</b>	421	2140
429.mcf	112	259	3940	260	3930	<b>260</b>	<b>3930</b>	112	259	3940	260	3930	<b>260</b>	<b>3930</b>
445.gobmk	112	654	1800	654	1800	<b>654</b>	<b>1800</b>	112	656	1790	655	1790	<b>655</b>	<b>1790</b>
456.hammer	112	247	4240	<b>247</b>	<b>4230</b>	247	4230	112	202	5190	203	5140	<b>202</b>	<b>5170</b>
458.sjeng	112	701	1930	<b>701</b>	<b>1930</b>	701	1930	112	652	2080	<b>652</b>	<b>2080</b>	652	2080
462.libquantum	112	<b>46.3</b>	<b>50100</b>	46.2	50300	46.5	50000	112	<b>46.3</b>	<b>50100</b>	46.2	50300	46.5	50000
464.h264ref	112	<b>745</b>	<b>3330</b>	747	3320	742	3340	112	<b>708</b>	<b>3500</b>	710	3490	708	3500
471.omnetpp	112	<b>476</b>	<b>1470</b>	476	1470	475	1470	112	438	1600	<b>439</b>	<b>1600</b>	439	1600
473.astar	112	463	1700	462	1700	<b>463</b>	<b>1700</b>	112	463	1700	462	1700	<b>463</b>	<b>1700</b>
483.xalancbmk	112	223	3470	224	3460	<b>223</b>	<b>3460</b>	112	223	3470	224	3460	<b>223</b>	<b>3460</b>

Results appear in the order in which they were run. Bold underlined text indicates a median measurement.

## Submit Notes

The numactl mechanism was used to bind copies to processors. The config file option 'submit' was used to generate numactl commands to bind each copy to a specific processor. For details, please see the config file.

## Operating System Notes

Kernel boot parameter: nohz\_full=1-111  
Stack size set to unlimited using "ulimit -s unlimited"

## Platform Notes

BIOS settings:  
Logical Processor Enabled  
Virtualization Technology Disabled  
Sub NUMA Cluster Enabled  
System Profile set to Custom  
CPU Performance set to Maximum Performance  
C1E Disabled  
C States set to Autonomous  
Uncore Frequency set to Dynamic  
Memory Patrol Scrub Disabled  
Energy Efficiency Policy set to Performance  
CPU Interconnect Bus Link Power Management Disabled  
PCI ASPM L1 Link Power Management Disabled  
Sysinfo program /home/cpu2006/config/sysinfo.rev6993  
Revision 6993 of 2015-11-06 (b5e8d4b4eb51ed28d7f98696cbe290c1)  
running on linux-2h8y Thu Oct 12 19:44:30 2017

Continued on next page



# SPEC CINT2006 Result

Copyright 2006-2017 Standard Performance Evaluation Corporation

**Dell Inc.**

PowerEdge R940  
(Intel Xeon Gold 6132, 2.60 GHz)

**SPECint\_rate2006 = 3160**

**SPECint\_rate\_base2006 = 2990**

**CPU2006 license:** 55  
**Test sponsor:** Dell Inc.  
**Tested by:** Dell Inc.

**Test date:** Oct-2017  
**Hardware Availability:** Sep-2017  
**Software Availability:** Apr-2017

## Platform Notes (Continued)

This section contains SUT (System Under Test) info as seen by some common utilities. To remove or add to this section, see: <http://www.spec.org/cpu2006/Docs/config.html#sysinfo>

```
From /proc/cpuinfo
model name : Intel(R) Xeon(R) Gold 6132 CPU @ 2.60GHz
 4 "physical id"s (chips)
 112 "processors"
cores, siblings (Caution: counting these is hw and system dependent. The
following excerpts from /proc/cpuinfo might not be reliable. Use with
caution.)
  cpu cores : 14
  siblings  : 28
  physical 0: cores 0 1 2 3 4 5 6 8 9 10 11 12 13 14
  physical 1: cores 0 1 2 3 4 5 6 8 9 10 11 12 13 14
  physical 2: cores 0 1 2 3 4 5 6 8 9 10 11 12 13 14
  physical 3: cores 0 1 2 3 4 5 6 8 9 10 11 12 13 14
cache size : 19712 KB
```

```
From /proc/meminfo
MemTotal:      791224272 kB
HugePages_Total:      0
Hugepagesize:    2048 kB
```

```
/usr/bin/lsb_release -d
SUSE Linux Enterprise Server 12 SP2
```

```
From /etc/*release* /etc/*version*
SuSE-release:
SUSE Linux Enterprise Server 12 (x86_64)
VERSION = 12
PATCHLEVEL = 2
# This file is deprecated and will be removed in a future service pack or
release.
# Please check /etc/os-release for details about this release.
os-release:
NAME="SLES"
VERSION="12-SP2"
VERSION_ID="12.2"
PRETTY_NAME="SUSE Linux Enterprise Server 12 SP2"
ID="sles"
ANSI_COLOR="0;32"
CPE_NAME="cpe:/o:suse:sles:12:sp2"
```

```
uname -a:
Linux linux-2h8y 4.4.21-69-default #1 SMP Tue Oct 25 10:58:20 UTC 2016
(9464f67) x86_64 x86_64 x86_64 GNU/Linux
```

```
run-level 3 Oct 12 19:44
```

```
SPEC is set to: /home/cpu2006
```

Continued on next page



# SPEC CINT2006 Result

Copyright 2006-2017 Standard Performance Evaluation Corporation

**Dell Inc.**

PowerEdge R940  
(Intel Xeon Gold 6132, 2.60 GHz)

**SPECint\_rate2006 = 3160**

**SPECint\_rate\_base2006 = 2990**

**CPU2006 license:** 55  
**Test sponsor:** Dell Inc.  
**Tested by:** Dell Inc.

**Test date:** Oct-2017  
**Hardware Availability:** Sep-2017  
**Software Availability:** Apr-2017

## Platform Notes (Continued)

Filesystem	Type	Size	Used	Avail	Use%	Mounted on
/dev/sda4	xfs	796G	17G	779G	3%	/home

Additional information from dmidecode:

Warning: Use caution when you interpret this section. The 'dmidecode' program reads system data which is "intended to allow hardware to be accurately determined", but the intent may not be met, as there are frequent changes to hardware, firmware, and the "DMTF SMBIOS" standard.

BIOS Dell Inc. 1.1.7 08/10/2017

Memory:  
48x 00CE063200CE M393A2K43BB1-CTD 16 GB 2 rank 2666 MHz

(End of data from sysinfo program)

## General Notes

Environment variables set by runspec before the start of the run:  
LD\_LIBRARY\_PATH = "/home/cpu2006/lib/ia32:/home/cpu2006/lib/intel64:/home/cpu2006/sh10.2"

Binaries compiled on a system with 1x Intel Core i7-4790 CPU + 32GB RAM  
memory using Redhat Enterprise Linux 7.2  
Transparent Huge Pages enabled by default  
Filesystem page cache cleared with:  
shell invocation of 'sync; echo 3 > /proc/sys/vm/drop\_caches' prior to run  
runspec command invoked through numactl i.e.:  
numactl --interleave=all runspec <etc>

## Base Compiler Invocation

C benchmarks:  
icc -m32 -L/opt/intel/compilers\_and\_libraries\_2017/linux/lib/ia32

C++ benchmarks:  
icpc -m32 -L/opt/intel/compilers\_and\_libraries\_2017/linux/lib/ia32

## Base Portability Flags

400.perlbench: -D\_FILE\_OFFSET\_BITS=64 -DSPEC\_CPU\_LINUX\_IA32  
401.bzip2: -D\_FILE\_OFFSET\_BITS=64  
403.gcc: -D\_FILE\_OFFSET\_BITS=64  
429.mcf: -D\_FILE\_OFFSET\_BITS=64  
445.gobmk: -D\_FILE\_OFFSET\_BITS=64  
456.hmmer: -D\_FILE\_OFFSET\_BITS=64  
458.sjeng: -D\_FILE\_OFFSET\_BITS=64  
462.libquantum: -D\_FILE\_OFFSET\_BITS=64 -DSPEC\_CPU\_LINUX

Continued on next page



# SPEC CINT2006 Result

Copyright 2006-2017 Standard Performance Evaluation Corporation

**Dell Inc.**

PowerEdge R940  
(Intel Xeon Gold 6132, 2.60 GHz)

**SPECint\_rate2006 = 3160**

**SPECint\_rate\_base2006 = 2990**

**CPU2006 license:** 55  
**Test sponsor:** Dell Inc.  
**Tested by:** Dell Inc.

**Test date:** Oct-2017  
**Hardware Availability:** Sep-2017  
**Software Availability:** Apr-2017

## Base Portability Flags (Continued)

464.h264ref: -D\_FILE\_OFFSET\_BITS=64  
471.omnetpp: -D\_FILE\_OFFSET\_BITS=64  
473.astar: -D\_FILE\_OFFSET\_BITS=64  
483.xalancbmk: -D\_FILE\_OFFSET\_BITS=64 -DSPEC\_CPU\_LINUX

## Base Optimization Flags

**C benchmarks:**  
-xCORE-AVX512 -ipo -O3 -no-prec-div -qopt-prefetch  
-qopt-mem-layout-trans=3

**C++ benchmarks:**  
-xCORE-AVX512 -ipo -O3 -no-prec-div -qopt-prefetch  
-qopt-mem-layout-trans=3 -Wl,-z,muldefs -L/sh10.2 -lsmartheap

## Base Other Flags

**C benchmarks:**  
403.gcc: -Dalloca=\_alloca

## Peak Compiler Invocation

**C benchmarks (except as noted below):**  
icc -m32 -L/opt/intel/compilers\_and\_libraries\_2017/linux/lib/ia32

400.perlbench: icc -m64  
401.bzip2: icc -m64  
456.hmmer: icc -m64  
458.sjeng: icc -m64

**C++ benchmarks:**  
icpc -m32 -L/opt/intel/compilers\_and\_libraries\_2017/linux/lib/ia32

## Peak Portability Flags

400.perlbench: -DSPEC\_CPU\_LP64 -DSPEC\_CPU\_LINUX\_X64  
401.bzip2: -DSPEC\_CPU\_LP64

Continued on next page



# SPEC CINT2006 Result

Copyright 2006-2017 Standard Performance Evaluation Corporation

**Dell Inc.**

PowerEdge R940  
(Intel Xeon Gold 6132, 2.60 GHz)

**SPECint\_rate2006 = 3160**

**SPECint\_rate\_base2006 = 2990**

**CPU2006 license:** 55  
**Test sponsor:** Dell Inc.  
**Tested by:** Dell Inc.

**Test date:** Oct-2017  
**Hardware Availability:** Sep-2017  
**Software Availability:** Apr-2017

## Peak Portability Flags (Continued)

403.gcc: -D\_FILE\_OFFSET\_BITS=64  
429.mcf: -D\_FILE\_OFFSET\_BITS=64  
445.gobmk: -D\_FILE\_OFFSET\_BITS=64  
456.hmmer: -DSPEC\_CPU\_LP64  
458.sjeng: -DSPEC\_CPU\_LP64  
462.libquantum: -D\_FILE\_OFFSET\_BITS=64 -DSPEC\_CPU\_LINUX  
464.h264ref: -D\_FILE\_OFFSET\_BITS=64  
471.omnetpp: -D\_FILE\_OFFSET\_BITS=64  
473.aster: -D\_FILE\_OFFSET\_BITS=64  
483.xalancbmk: -D\_FILE\_OFFSET\_BITS=64 -DSPEC\_CPU\_LINUX

## Peak Optimization Flags

C benchmarks:

400.perlbench: -prof-gen(pass 1) -prof-use(pass 2) -xCORE-AVX512(pass 2)  
-par-num-threads=1(pass 1) -ipo(pass 2) -O3(pass 2)  
-no-prec-div(pass 2) -auto-ilp32 -qopt-mem-layout-trans=3

401.bzip2: -prof-gen(pass 1) -prof-use(pass 2) -xCORE-AVX512(pass 2)  
-par-num-threads=1(pass 1) -ipo(pass 2) -O3(pass 2)  
-no-prec-div(pass 2) -qopt-prefetch -auto-ilp32  
-qopt-mem-layout-trans=3

403.gcc: -xCORE-AVX512 -ipo -O3 -no-prec-div  
-qopt-mem-layout-trans=3

429.mcf: basepeak = yes

445.gobmk: -prof-gen(pass 1) -prof-use(pass 2) -xCORE-AVX512(pass 2)  
-par-num-threads=1(pass 1) -ipo(pass 2) -O3(pass 2)  
-no-prec-div(pass 2) -qopt-mem-layout-trans=3

456.hmmer: -xCORE-AVX512 -ipo -O3 -no-prec-div -unroll2 -auto-ilp32  
-qopt-mem-layout-trans=3

458.sjeng: -prof-gen(pass 1) -prof-use(pass 2) -xCORE-AVX512(pass 2)  
-par-num-threads=1(pass 1) -ipo(pass 2) -O3(pass 2)  
-no-prec-div(pass 2) -unroll4 -auto-ilp32  
-qopt-mem-layout-trans=3

462.libquantum: basepeak = yes

464.h264ref: -prof-gen(pass 1) -prof-use(pass 2) -xCORE-AVX512(pass 2)  
-par-num-threads=1(pass 1) -ipo(pass 2) -O3(pass 2)  
-no-prec-div(pass 2) -unroll2 -qopt-mem-layout-trans=3

Continued on next page



# SPEC CINT2006 Result

Copyright 2006-2017 Standard Performance Evaluation Corporation

**Dell Inc.**

PowerEdge R940  
(Intel Xeon Gold 6132, 2.60 GHz)

**SPECint\_rate2006 = 3160**

**SPECint\_rate\_base2006 = 2990**

**CPU2006 license:** 55  
**Test sponsor:** Dell Inc.  
**Tested by:** Dell Inc.

**Test date:** Oct-2017  
**Hardware Availability:** Sep-2017  
**Software Availability:** Apr-2017

## Peak Optimization Flags (Continued)

C++ benchmarks:

```
471.omnetpp: -prof-gen(pass 1) -prof-use(pass 2) -xCORE-AVX512(pass 2)
             -par-num-threads=1(pass 1) -ipo(pass 2) -O3(pass 2)
             -no-prec-div(pass 2)
             -qopt-ra-region-strategy=block
             -qopt-mem-layout-trans=3 -Wl,-z,muldefs
             -L/shl0.2 -lsmartheap
```

473.astar: basepeak = yes

483.xalancbmk: basepeak = yes

## Peak Other Flags

C benchmarks:

```
403.gcc: -Dalloca=_alloca
```

The flags files that were used to format this result can be browsed at

<http://www.spec.org/cpu2006/flags/Intel-ic17.0-official-linux64-revF.html>  
<http://www.spec.org/cpu2006/flags/Dell-Platform-Flags-PowerEdge14G-revD.20171221.html>

You can also download the XML flags sources by saving the following links:

<http://www.spec.org/cpu2006/flags/Intel-ic17.0-official-linux64-revF.xml>  
<http://www.spec.org/cpu2006/flags/Dell-Platform-Flags-PowerEdge14G-revD.20171221.xml>

SPEC and SPECint are registered trademarks of the Standard Performance Evaluation Corporation. All other brand and product names appearing in this result are trademarks or registered trademarks of their respective holders.

For questions about this result, please contact the tester.  
For other inquiries, please contact [webmaster@spec.org](mailto:webmaster@spec.org).

Tested with SPEC CPU2006 v1.2.  
Report generated on Thu Dec 21 17:10:16 2017 by SPEC CPU2006 PS/PDF formatter v6932.  
Originally published on 21 December 2017.