



SPEC® CINT2006 Result

Copyright 2006-2017 Standard Performance Evaluation Corporation

Lenovo Global Technology

SPECint®_rate2006 = 1870

ThinkSystem SD530
(2.00 GHz, Intel Xeon Gold 6138)

SPECint_rate_base2006 = 1770

CPU2006 license: 9017

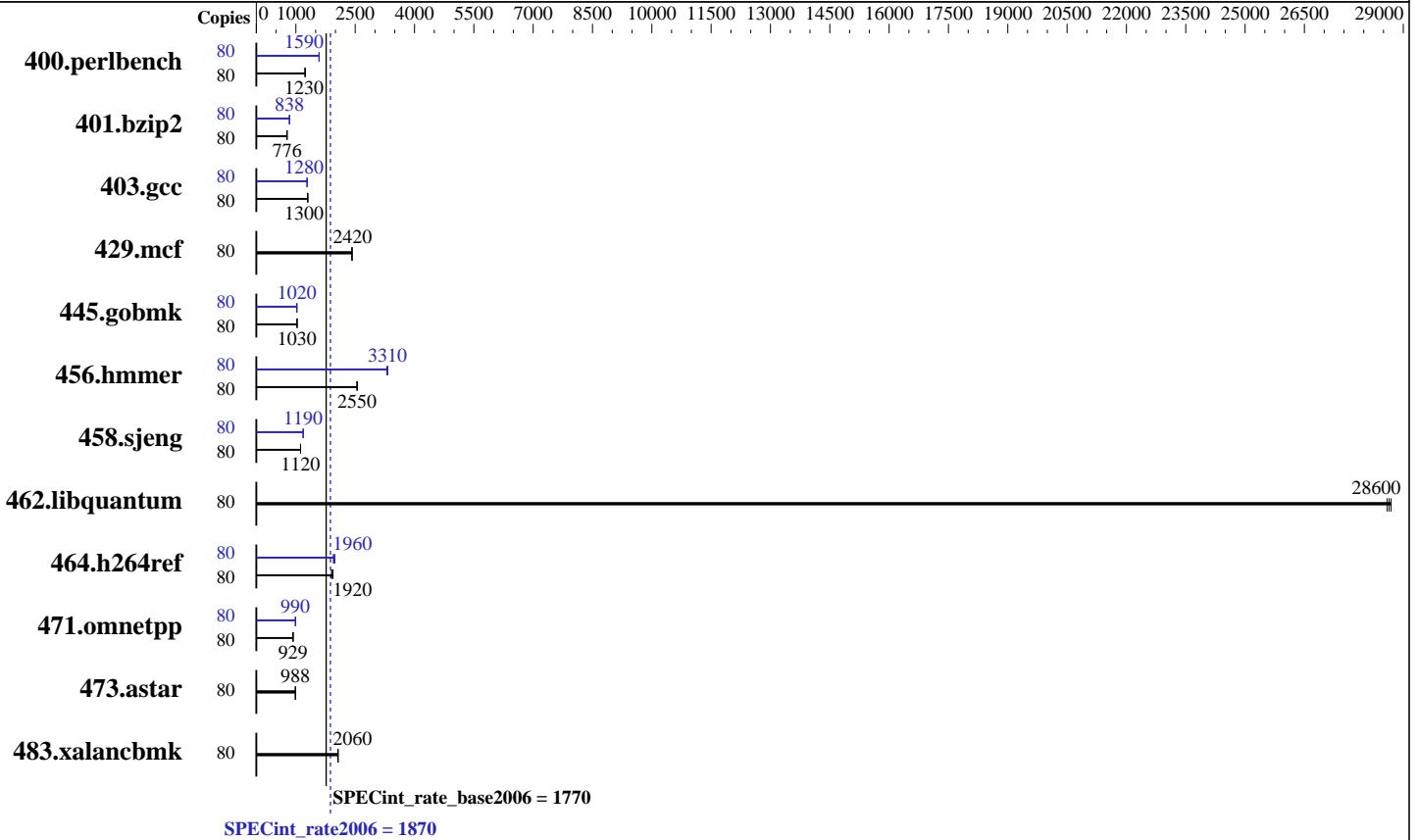
Test date: Jul-2017

Test sponsor: Lenovo Global Technology

Hardware Availability: Aug-2017

Tested by: Lenovo Global Technology

Software Availability: Nov-2016



Hardware

CPU Name: Intel Xeon Gold 6138
 CPU Characteristics: Intel Turbo Boost Technology up to 3.70 GHz
 CPU MHz: 2000
 FPU: Integrated
 CPU(s) enabled: 40 cores, 2 chips, 20 cores/chip, 2 threads/core
 CPU(s) orderable: 1,2 chips
 Primary Cache: 32 KB I + 32 KB D on chip per core
 Secondary Cache: 1 MB I+D on chip per core
 L3 Cache: 27.5 MB I+D on chip per chip
 Other Cache: None
 Memory: 384 GB (12 x 32 GB 2Rx4 PC4-2666V-R)
 Disk Subsystem: 1 x 800 GB SATA SSD
 Other Hardware: None

Software

Operating System: SUSE Linux Enterprise Server 12 SP2 (x86_64)
 Kernel 4.4.21-69-default
 Compiler: C/C++: Version 17.0.1.132 of Intel C/C++ Compiler for Linux
 Auto Parallel: No
 File System: xfs
 System State: Run level 3 (multi-user)
 Base Pointers: 32-bit
 Peak Pointers: 32/64-bit
 Other Software: Microquill SmartHeap V10.2



SPEC CINT2006 Result

Copyright 2006-2017 Standard Performance Evaluation Corporation

Lenovo Global Technology

ThinkSystem SD530
(2.00 GHz, Intel Xeon Gold 6138)

SPECint_rate2006 = 1870

SPECint_rate_base2006 = 1770

CPU2006 license: 9017

Test sponsor: Lenovo Global Technology

Tested by: Lenovo Global Technology

Test date: Jul-2017

Hardware Availability: Aug-2017

Software Availability: Nov-2016

Results Table

Benchmark	Base							Peak						
	Copies	Seconds	Ratio	Seconds	Ratio	Seconds	Ratio	Copies	Seconds	Ratio	Seconds	Ratio	Seconds	Ratio
400.perlbench	80	634	1230	635	1230	631	1240	80	492	1590	493	1590	493	1590
401.bzip2	80	991	779	994	776	996	775	80	923	837	920	839	921	838
403.gcc	80	495	1300	496	1300	495	1300	80	502	1280	502	1280	500	1290
429.mcf	80	301	2420	302	2420	302	2420	80	301	2420	302	2420	302	2420
445.gobmk	80	815	1030	815	1030	815	1030	80	819	1020	819	1030	819	1020
456.hammer	80	292	2560	293	2550	294	2540	80	225	3310	226	3300	224	3330
458.sjeng	80	867	1120	865	1120	865	1120	80	817	1190	816	1190	816	1190
462.libquantum	80	58.0	28600	57.8	28700	57.9	28600	80	58.0	28600	57.8	28700	57.9	28600
464.h264ref	80	922	1920	931	1900	913	1940	80	909	1950	902	1960	891	1990
471.omnetpp	80	538	929	539	928	538	929	80	505	990	505	990	506	989
473.astar	80	569	987	567	990	568	988	80	569	987	567	990	568	988
483.xalancbmk	80	267	2070	267	2060	268	2060	80	267	2070	267	2060	268	2060

Results appear in the order in which they were run. Bold underlined text indicates a median measurement.

Submit Notes

The numactl mechanism was used to bind copies to processors. The config file option 'submit' was used to generate numactl commands to bind each copy to a specific processor. For details, please see the config file.

Operating System Notes

Stack size set to unlimited using "ulimit -s unlimited"

Platform Notes

BIOS Configuration:

DCU Streamer Prefetcher set to Disable
Uncore Frequency Scaling set to Disable
Stale AtoS set to Enable
LLC dead line alloc set to Disable
SNC set to Enable
Sysinfo program /home/cpu2006-1.2-ic17.0u1/config/sysinfo.rev6993
Revision 6993 of 2015-11-06 (b5e8d4b4eb51ed28d7f98696cbe290c1)
running on Stark-node-02 Fri Jul 7 02:18:37 2017

This section contains SUT (System Under Test) info as seen by some common utilities. To remove or add to this section, see:
<http://www.spec.org/cpu2006/Docs/config.html#sysinfo>

From /proc/cpuinfo

model name : Intel(R) Xeon(R) Gold 6138 CPU @ 2.00GHz
2 "physical id"s (chips)

Continued on next page



SPEC CINT2006 Result

Copyright 2006-2017 Standard Performance Evaluation Corporation

Lenovo Global Technology

SPECint_rate2006 = 1870

ThinkSystem SD530
(2.00 GHz, Intel Xeon Gold 6138)

SPECint_rate_base2006 = 1770

CPU2006 license: 9017

Test date: Jul-2017

Test sponsor: Lenovo Global Technology

Hardware Availability: Aug-2017

Tested by: Lenovo Global Technology

Software Availability: Nov-2016

Platform Notes (Continued)

80 "processors"
cores, siblings (Caution: counting these is hw and system dependent. The following excerpts from /proc/cpuinfo might not be reliable. Use with caution.)

```
cpu cores : 20
siblings  : 40
physical 0: cores 0 1 2 3 4 8 9 10 11 12 16 17 18 19 20 24 25 26 27 28
physical 1: cores 0 1 2 3 4 8 9 10 11 12 16 17 18 19 20 24 25 26 27 28
cache size : 28160 KB
```

From /proc/meminfo

```
MemTotal:      395737612 kB
HugePages_Total: 0
Hugepagesize:   2048 kB
```

From /etc/*release* /etc/*version*

```
SuSE-release:
SUSE Linux Enterprise Server 12 (x86_64)
VERSION = 12
PATCHLEVEL = 2
# This file is deprecated and will be removed in a future service pack or
release.
# Please check /etc/os-release for details about this release.
os-release:
NAME="SLES"
VERSION="12-SP2"
VERSION_ID="12.2"
PRETTY_NAME="SUSE Linux Enterprise Server 12 SP2"
ID="sles"
ANSI_COLOR="0;32"
CPE_NAME="cpe:/o:suse:sles:12:sp2"
```

uname -a:

```
Linux Stark-node-02 4.4.21-69-default #1 SMP Tue Oct 25 10:58:20 UTC 2016
(9464f67) x86_64 x86_64 x86_64 GNU/Linux
```

run-level 3 Jul 7 02:17

SPEC is set to: /home/cpu2006-1.2-ic17.0u1

```
Filesystem      Type  Size  Used Avail Use% Mounted on
/dev/sda4        xfs   688G  160G  529G  24% /home
```

Additional information from dmidecode:

Warning: Use caution when you interpret this section. The 'dmidecode' program reads system data which is "intended to allow hardware to be accurately determined", but the intent may not be met, as there are frequent changes to hardware, firmware, and the "DMTF SMBIOS" standard.

BIOS Lenovo -[TEE105Z-1.00]- 04/27/2017

Memory:

```
4x NO DIMM NO DIMM
12x Samsung M393A4K40BB2-CTD 32 GB 2 rank 2666 MHz
Continued on next page
```



SPEC CINT2006 Result

Copyright 2006-2017 Standard Performance Evaluation Corporation

Lenovo Global Technology

SPECint_rate2006 = 1870

ThinkSystem SD530
(2.00 GHz, Intel Xeon Gold 6138)

SPECint_rate_base2006 = 1770

CPU2006 license: 9017

Test date: Jul-2017

Test sponsor: Lenovo Global Technology

Hardware Availability: Aug-2017

Tested by: Lenovo Global Technology

Software Availability: Nov-2016

Platform Notes (Continued)

(End of data from sysinfo program)

General Notes

Environment variables set by runspec before the start of the run:

LD_LIBRARY_PATH = "/home/cpu2006-1.2-ic17.0u1/lib/ia32:/home/cpu2006-1.2-ic17.0u1/lib/intel64:/home/cpu2006-1.2-ic17.0u1/sh10.2"

Binaries compiled on a system with 1x Intel Core i7-4790 CPU + 32GB RAM
memory using Redhat Enterprise Linux 7.2

Transparent Huge Pages enabled by default

Filesystem page cache cleared with:

```
echo 1 > /proc/sys/vm/drop_caches
runspec command invoked through numactl i.e.:
numactl --interleave=all runspec <etc>
```

Base Compiler Invocation

C benchmarks:

```
icc -m32 -L/opt/intel/compilers_and_libraries_2017/linux/lib/ia32
```

C++ benchmarks:

```
icpc -m32 -L/opt/intel/compilers_and_libraries_2017/linux/lib/ia32
```

Base Portability Flags

```
400.perlbench: -D_FILE_OFFSET_BITS=64 -DSPEC_CPU_LINUX_IA32
401.bzip2: -D_FILE_OFFSET_BITS=64
403.gcc: -D_FILE_OFFSET_BITS=64
429.mcf: -D_FILE_OFFSET_BITS=64
445.gobmk: -D_FILE_OFFSET_BITS=64
456.hmmer: -D_FILE_OFFSET_BITS=64
458.sjeng: -D_FILE_OFFSET_BITS=64
462.libquantum: -D_FILE_OFFSET_BITS=64 -DSPEC_CPU_LINUX
464.h264ref: -D_FILE_OFFSET_BITS=64
471.omnetpp: -D_FILE_OFFSET_BITS=64
473.astar: -D_FILE_OFFSET_BITS=64
483.xalancbmk: -D_FILE_OFFSET_BITS=64 -DSPEC_CPU_LINUX
```

Base Optimization Flags

C benchmarks:

```
-xCORE-AVX512 -ipo -O3 -no-prec-div -qopt-prefetch
-qopt-mem-layout-trans=3
```

Continued on next page



SPEC CINT2006 Result

Copyright 2006-2017 Standard Performance Evaluation Corporation

Lenovo Global Technology

SPECint_rate2006 = 1870

ThinkSystem SD530
(2.00 GHz, Intel Xeon Gold 6138)

SPECint_rate_base2006 = 1770

CPU2006 license: 9017

Test date: Jul-2017

Test sponsor: Lenovo Global Technology

Hardware Availability: Aug-2017

Tested by: Lenovo Global Technology

Software Availability: Nov-2016

Base Optimization Flags (Continued)

C++ benchmarks:

-xCORE-AVX512 -ipo -O3 -no-prec-div -qopt-prefetch
-qopt-mem-layout-trans=3 -Wl,-z,muldefs -L/sh10.2 -lsmartheap

Base Other Flags

C benchmarks:

403.gcc: -Dalloca=_alloca

Peak Compiler Invocation

C benchmarks (except as noted below):

icc -m32 -L/opt/intel/compilers_and_libraries_2017/linux/lib/ia32

400.perlbench: icc -m64

401.bzip2: icc -m64

456.hmmer: icc -m64

458.sjeng: icc -m64

C++ benchmarks:

icpc -m32 -L/opt/intel/compilers_and_libraries_2017/linux/lib/ia32

Peak Portability Flags

400.perlbench: -DSPEC_CPU_LP64 -DSPEC_CPU_LINUX_X64

401.bzip2: -DSPEC_CPU_LP64

403.gcc: -D_FILE_OFFSET_BITS=64

429.mcf: -D_FILE_OFFSET_BITS=64

445.gobmk: -D_FILE_OFFSET_BITS=64

456.hmmer: -DSPEC_CPU_LP64

458.sjeng: -DSPEC_CPU_LP64

462.libquantum: -D_FILE_OFFSET_BITS=64 -DSPEC_CPU_LINUX

464.h264ref: -D_FILE_OFFSET_BITS=64

471.omnetpp: -D_FILE_OFFSET_BITS=64

473.astar: -D_FILE_OFFSET_BITS=64

483.xalancbmk: -D_FILE_OFFSET_BITS=64 -DSPEC_CPU_LINUX



SPEC CINT2006 Result

Copyright 2006-2017 Standard Performance Evaluation Corporation

Lenovo Global Technology

SPECint_rate2006 = 1870

ThinkSystem SD530
(2.00 GHz, Intel Xeon Gold 6138)

SPECint_rate_base2006 = 1770

CPU2006 license: 9017

Test date: Jul-2017

Test sponsor: Lenovo Global Technology

Hardware Availability: Aug-2017

Tested by: Lenovo Global Technology

Software Availability: Nov-2016

Peak Optimization Flags

C benchmarks:

400.perlbench: -prof-gen(pass 1) -prof-use(pass 2) -xCORE-AVX512(pass 2)
-par-num-threads=1(pass 1) -ipo(pass 2) -O3(pass 2)
-no-prec-div(pass 2) -auto-ilp32 -qopt-mem-layout-trans=3

401.bzip2: -prof-gen(pass 1) -prof-use(pass 2) -xCORE-AVX512(pass 2)
-par-num-threads=1(pass 1) -ipo(pass 2) -O3(pass 2)
-no-prec-div(pass 2) -qopt-prefetch -auto-ilp32
-qopt-mem-layout-trans=3

403.gcc: -xCORE-AVX512 -ipo -O3 -no-prec-div
-qopt-mem-layout-trans=3

429.mcf: basepeak = yes

445.gobmk: -prof-gen(pass 1) -prof-use(pass 2) -xCORE-AVX512(pass 2)
-par-num-threads=1(pass 1) -ipo(pass 2) -O3(pass 2)
-no-prec-div(pass 2) -qopt-mem-layout-trans=3

456.hmmer: -xCORE-AVX512 -ipo -O3 -no-prec-div -unroll2 -auto-ilp32
-qopt-mem-layout-trans=3

458.sjeng: -prof-gen(pass 1) -prof-use(pass 2) -xCORE-AVX512(pass 2)
-par-num-threads=1(pass 1) -ipo(pass 2) -O3(pass 2)
-no-prec-div(pass 2) -unroll4 -auto-ilp32
-qopt-mem-layout-trans=3

462.libquantum: basepeak = yes

464.h264ref: -prof-gen(pass 1) -prof-use(pass 2) -xCORE-AVX512(pass 2)
-par-num-threads=1(pass 1) -ipo(pass 2) -O3(pass 2)
-no-prec-div(pass 2) -unroll2 -qopt-mem-layout-trans=3

C++ benchmarks:

471.omnetpp: -prof-gen(pass 1) -prof-use(pass 2) -xCORE-AVX512(pass 2)
-par-num-threads=1(pass 1) -ipo(pass 2) -O3(pass 2)
-no-prec-div(pass 2)
-qopt-ra-region-strategy=block
-qopt-mem-layout-trans=3 -Wl,-z,muldefs
-L/sh10.2 -lsmartheap

473.astar: basepeak = yes

483.xalancbmk: basepeak = yes



SPEC CINT2006 Result

Copyright 2006-2017 Standard Performance Evaluation Corporation

Lenovo Global Technology

SPECint_rate2006 = 1870

ThinkSystem SD530
(2.00 GHz, Intel Xeon Gold 6138)

SPECint_rate_base2006 = 1770

CPU2006 license: 9017

Test date: Jul-2017

Test sponsor: Lenovo Global Technology

Hardware Availability: Aug-2017

Tested by: Lenovo Global Technology

Software Availability: Nov-2016

Peak Other Flags

C benchmarks:

403.gcc: -Dalloca=_alloca

The flags files that were used to format this result can be browsed at

<http://www.spec.org/cpu2006/flags/Intel-ic17.0-official-linux64-revD.html>

<http://www.spec.org/cpu2006/flags/Lenovo-Platform-Flags-V1.2-SKL-C.20171004.html>

You can also download the XML flags sources by saving the following links:

<http://www.spec.org/cpu2006/flags/Intel-ic17.0-official-linux64-revD.xml>

<http://www.spec.org/cpu2006/flags/Lenovo-Platform-Flags-V1.2-SKL-C.20171004.xml>

SPEC and SPECint are registered trademarks of the Standard Performance Evaluation Corporation. All other brand and product names appearing in this result are trademarks or registered trademarks of their respective holders.

For questions about this result, please contact the tester.
For other inquiries, please contact webmaster@spec.org.

Tested with SPEC CPU2006 v1.2.
Report generated on Wed Oct 4 12:36:39 2017 by SPEC CPU2006 PS/PDF formatter v6932.
Originally published on 3 October 2017.