



# SPEC® CINT2006 Result

Copyright 2006-2017 Standard Performance Evaluation Corporation

## Lenovo Global Technology

### SPECint®\_rate2006 = 2040

ThinkSystem SR630  
(2.40 GHz, Intel Xeon Gold 6148)

### SPECint\_rate\_base2006 = 1940

CPU2006 license: 9017

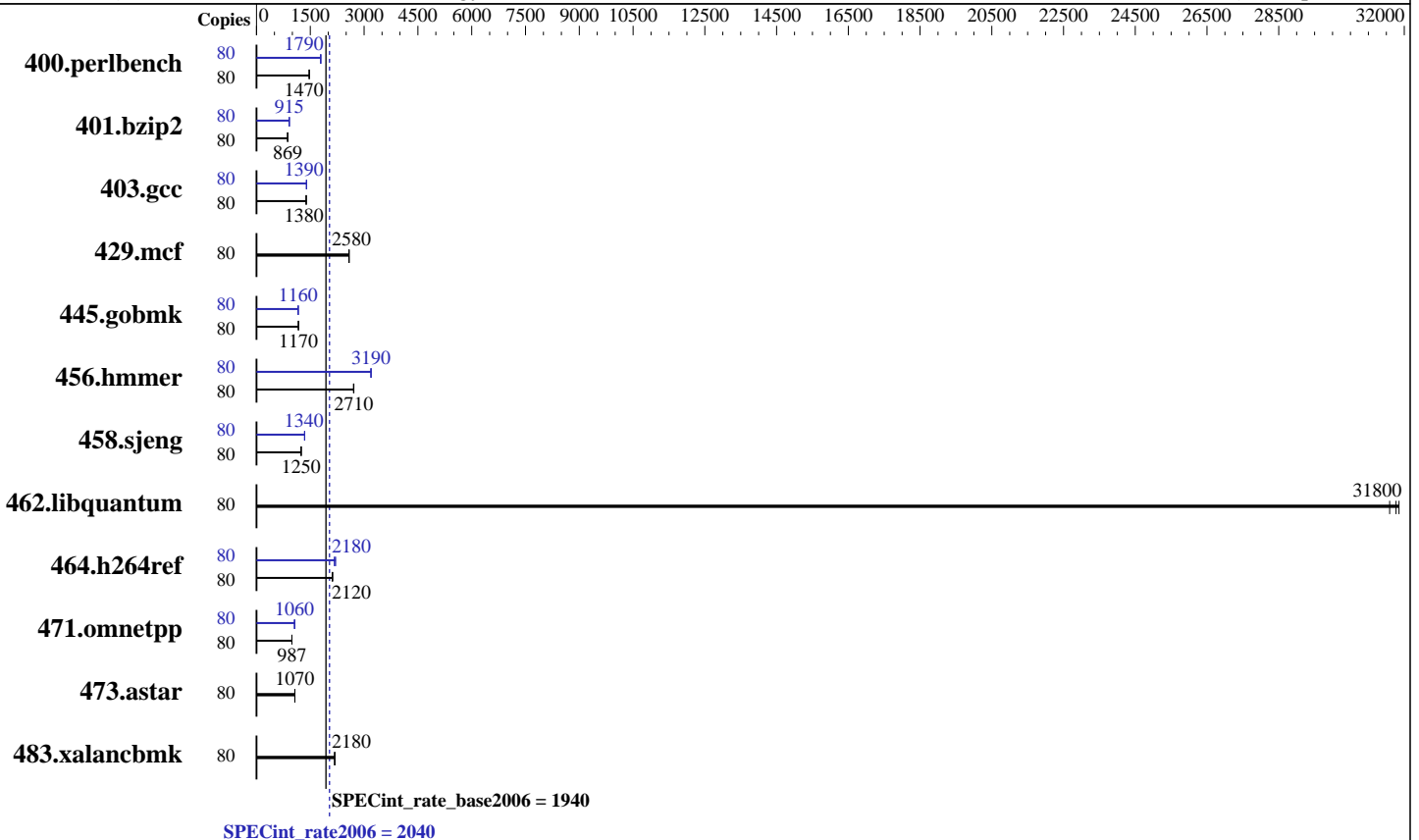
Test date: Aug-2017

Test sponsor: Lenovo Global Technology

Hardware Availability: Aug-2017

Tested by: Lenovo Global Technology

Software Availability: Apr-2017



### Hardware

CPU Name: Intel Xeon Gold 6148  
 CPU Characteristics: Intel Turbo Boost Technology up to 3.70 GHz  
 CPU MHz: 2400  
 FPU: Integrated  
 CPU(s) enabled: 40 cores, 2 chips, 20 cores/chip, 2 threads/core  
 CPU(s) orderable: 1,2 chips  
 Primary Cache: 32 KB I + 32 KB D on chip per core  
 Secondary Cache: 1 MB I+D on chip per core  
 L3 Cache: 27.5 MB I+D on chip per chip  
 Other Cache: None  
 Memory: 384 GB (24 x 16 GB 2Rx8 PC4-2666V-R)  
 Disk Subsystem: 1 x 800 GB SAS SSD  
 Other Hardware: None

### Software

Operating System: SUSE Linux Enterprise Server 12 SP2 (x86\_64)  
 Kernel 4.4.21-69-default  
 Compiler: C/C++: Version 17.0.3.191 of Intel C/C++ Compiler for Linux  
 Auto Parallel: Yes  
 File System: btrfs  
 System State: Run level 3 (multi-user)  
 Base Pointers: 32-bit  
 Peak Pointers: 32/64-bit  
 Other Software: Microquill SmartHeap V10.2



# SPEC CINT2006 Result

Copyright 2006-2017 Standard Performance Evaluation Corporation

## Lenovo Global Technology

SPECint\_rate2006 = 2040

ThinkSystem SR630  
(2.40 GHz, Intel Xeon Gold 6148)

SPECint\_rate\_base2006 = 1940

CPU2006 license: 9017

Test date: Aug-2017

Test sponsor: Lenovo Global Technology

Hardware Availability: Aug-2017

Tested by: Lenovo Global Technology

Software Availability: Apr-2017

## Results Table

Benchmark	Base							Peak						
	Copies	Seconds	Ratio	Seconds	Ratio	Seconds	Ratio	Copies	Seconds	Ratio	Seconds	Ratio	Seconds	Ratio
400.perlbench	80	530	1470	533	1470	<u>531</u>	<u>1470</u>	80	438	1780	436	1790	<u>436</u>	<u>1790</u>
401.bzip2	80	886	871	890	867	<u>888</u>	<u>869</u>	80	844	915	<u>844</u>	<u>915</u>	846	912
403.gcc	80	465	1380	<u>465</u>	<u>1380</u>	464	1390	80	<u>462</u>	<u>1390</u>	463	1390	461	1400
429.mcf	80	<u>283</u>	<u>2580</u>	283	2580	283	2580	80	<u>283</u>	<u>2580</u>	283	2580	283	2580
445.gobmk	80	<u>718</u>	<u>1170</u>	718	1170	718	1170	80	<u>722</u>	<u>1160</u>	722	1160	722	1160
456.hammer	80	275	2710	<u>276</u>	<u>2710</u>	276	2710	80	<u>234</u>	<u>3190</u>	234	3190	233	3200
458.sjeng	80	778	1240	777	1250	<u>777</u>	<u>1250</u>	80	720	1340	<u>722</u>	<u>1340</u>	722	1340
462.libquantum	80	52.5	31600	<u>52.2</u>	<u>31800</u>	52.0	31900	80	52.5	31600	<u>52.2</u>	<u>31800</u>	52.0	31900
464.h264ref	80	<u>836</u>	<u>2120</u>	838	2110	833	2120	80	<u>811</u>	<u>2180</u>	802	2210	816	2170
471.omnetpp	80	<u>507</u>	<u>987</u>	507	986	506	988	80	470	1060	<u>471</u>	<u>1060</u>	472	1060
473.astar	80	<u>525</u>	<u>1070</u>	526	1070	524	1070	80	<u>525</u>	<u>1070</u>	526	1070	524	1070
483.xalancbmk	80	253	2180	254	2180	<u>253</u>	<u>2180</u>	80	253	2180	254	2180	<u>253</u>	<u>2180</u>

Results appear in the order in which they were run. Bold underlined text indicates a median measurement.

## Submit Notes

The numactl mechanism was used to bind copies to processors. The config file option 'submit' was used to generate numactl commands to bind each copy to a specific processor. For details, please see the config file.

## Operating System Notes

Stack size set to unlimited using "ulimit -s unlimited"

## Platform Notes

BIOS configuration:

Choose Operating Mode set to Maximum Performance

SNC set to Enable

DCU Streamer Prefetcher set to Disable

Stale AtoS set to Enable

LLC dead line alloc set to Disable

Sysinfo program /home/cpu2006-1.2-ic17.0u3/config/sysinfo.rev6993

Revision 6993 of 2015-11-06 (b5e8d4b4eb51ed28d7f98696cbe290c1)

running on Cable-SPECcpu2006-SUSE12SP2 Tue Aug 22 05:33:16 2017

This section contains SUT (System Under Test) info as seen by some common utilities. To remove or add to this section, see:

<http://www.spec.org/cpu2006/Docs/config.html#sysinfo>

From /proc/cpuinfo

model name : Intel(R) Xeon(R) Gold 6148 CPU @ 2.40GHz

2 "physical id"s (chips)

Continued on next page

Standard Performance Evaluation Corporation

info@spec.org

<http://www.spec.org/>



# SPEC CINT2006 Result

Copyright 2006-2017 Standard Performance Evaluation Corporation

## Lenovo Global Technology

SPECint\_rate2006 = 2040

ThinkSystem SR630  
(2.40 GHz, Intel Xeon Gold 6148)

SPECint\_rate\_base2006 = 1940

CPU2006 license: 9017

Test date: Aug-2017

Test sponsor: Lenovo Global Technology

Hardware Availability: Aug-2017

Tested by: Lenovo Global Technology

Software Availability: Apr-2017

### Platform Notes (Continued)

80 "processors"  
cores, siblings (Caution: counting these is hw and system dependent. The following excerpts from /proc/cpuinfo might not be reliable. Use with caution.)

```
cpu cores : 20
siblings  : 40
physical 0: cores 0 1 2 3 4 8 9 10 11 12 16 17 18 19 20 24 25 26 27 28
physical 1: cores 0 1 2 3 4 8 9 10 11 12 16 17 18 19 20 24 25 26 27 28
cache size : 28160 KB
```

From /proc/meminfo

```
MemTotal:      395891816 kB
HugePages_Total: 0
Hugepagesize:  2048 kB
```

From /etc/\*release\* /etc/\*version\*

```
SuSE-release:
SUSE Linux Enterprise Server 12 (x86_64)
VERSION = 12
PATCHLEVEL = 2
# This file is deprecated and will be removed in a future service pack or
release.
# Please check /etc/os-release for details about this release.
os-release:
NAME="SLES"
VERSION="12-SP2"
VERSION_ID="12.2"
PRETTY_NAME="SUSE Linux Enterprise Server 12 SP2"
ID="sles"
ANSI_COLOR="0;32"
CPE_NAME="cpe:/o:suse:sles:12:sp2"
```

uname -a:

```
Linux Cable-SPECcpu2006-SUSE12SP2 4.4.21-69-default #1 SMP Tue Oct 25
10:58:20 UTC 2016 (9464f67) x86_64 x86_64 x86_64 GNU/Linux
```

run-level 3 Aug 22 05:31

SPEC is set to: /home/cpu2006-1.2-ic17.0u3

```
Filesystem      Type      Size  Used Avail Use% Mounted on
/dev/sda2        btrfs    744G  216G  527G   30% /home
```

Additional information from dmidecode:

Warning: Use caution when you interpret this section. The 'dmidecode' program reads system data which is "intended to allow hardware to be accurately determined", but the intent may not be met, as there are frequent changes to hardware, firmware, and the "DMTF SMBIOS" standard.

BIOS Lenovo -[IVE109Q-1.00]- 06/28/2017

Memory:

24x Samsung M393A2K43BB1-CTD 16 GB 2 rank 2666 MHz

Continued on next page



# SPEC CINT2006 Result

Copyright 2006-2017 Standard Performance Evaluation Corporation

Lenovo Global Technology

SPECint\_rate2006 = 2040

ThinkSystem SR630  
(2.40 GHz, Intel Xeon Gold 6148)

SPECint\_rate\_base2006 = 1940

CPU2006 license: 9017

Test date: Aug-2017

Test sponsor: Lenovo Global Technology

Hardware Availability: Aug-2017

Tested by: Lenovo Global Technology

Software Availability: Apr-2017

## Platform Notes (Continued)

(End of data from sysinfo program)

## General Notes

Environment variables set by runspec before the start of the run:

LD\_LIBRARY\_PATH = "/home/cpu2006-1.2-ic17.0u3/lib/ia32:/home/cpu2006-1.2-ic17.0u3/lib/intel64:/home/cpu2006-1.2-ic17.0u3/sh10.2"

Binaries compiled on a system with 1x Intel Core i7-4790 CPU + 32GB RAM  
memory using Redhat Enterprise Linux 7.2

Transparent Huge Pages enabled by default

Filesystem page cache cleared with:

shell invocation of 'sync; echo 3 > /proc/sys/vm/drop\_caches' prior to run

runspec command invoked through numactl i.e.:

numactl --interleave=all runspec <etc>

## Base Compiler Invocation

C benchmarks:

icc -m32 -L/opt/intel/compilers\_and\_libraries\_2017/linux/lib/ia32

C++ benchmarks:

icpc -m32 -L/opt/intel/compilers\_and\_libraries\_2017/linux/lib/ia32

## Base Portability Flags

400.perlbench: -D\_FILE\_OFFSET\_BITS=64 -DSPEC\_CPU\_LINUX\_IA32  
401.bzip2: -D\_FILE\_OFFSET\_BITS=64  
403.gcc: -D\_FILE\_OFFSET\_BITS=64  
429.mcf: -D\_FILE\_OFFSET\_BITS=64  
445.gobmk: -D\_FILE\_OFFSET\_BITS=64  
456.hmmer: -D\_FILE\_OFFSET\_BITS=64  
458.sjeng: -D\_FILE\_OFFSET\_BITS=64  
462.libquantum: -D\_FILE\_OFFSET\_BITS=64 -DSPEC\_CPU\_LINUX  
464.h264ref: -D\_FILE\_OFFSET\_BITS=64  
471.omnetpp: -D\_FILE\_OFFSET\_BITS=64  
473.astar: -D\_FILE\_OFFSET\_BITS=64  
483.xalancbmk: -D\_FILE\_OFFSET\_BITS=64 -DSPEC\_CPU\_LINUX

## Base Optimization Flags

C benchmarks:

-xCORE-AVX512 -ipo -O3 -no-prec-div -qopt-prefetch  
-qopt-mem-layout-trans=3

Continued on next page



# SPEC CINT2006 Result

Copyright 2006-2017 Standard Performance Evaluation Corporation

Lenovo Global Technology

SPECint\_rate2006 = 2040

ThinkSystem SR630  
(2.40 GHz, Intel Xeon Gold 6148)

SPECint\_rate\_base2006 = 1940

CPU2006 license: 9017

Test date: Aug-2017

Test sponsor: Lenovo Global Technology

Hardware Availability: Aug-2017

Tested by: Lenovo Global Technology

Software Availability: Apr-2017

## Base Optimization Flags (Continued)

C++ benchmarks:

-xCORE-AVX512 -ipo -O3 -no-prec-div -qopt-prefetch  
-qopt-mem-layout-trans=3 -Wl,-z,muldefs -L/sh10.2 -lsmartheap

## Base Other Flags

C benchmarks:

403.gcc: -Dalloca=\_alloca

## Peak Compiler Invocation

C benchmarks (except as noted below):

icc -m32 -L/opt/intel/compilers\_and\_libraries\_2017/linux/lib/ia32

400.perlbench: icc -m64

401.bzip2: icc -m64

456.hmmer: icc -m64

458.sjeng: icc -m64

C++ benchmarks:

icpc -m32 -L/opt/intel/compilers\_and\_libraries\_2017/linux/lib/ia32

## Peak Portability Flags

400.perlbench: -DSPEC\_CPU\_LP64 -DSPEC\_CPU\_LINUX\_X64

401.bzip2: -DSPEC\_CPU\_LP64

403.gcc: -D\_FILE\_OFFSET\_BITS=64

429.mcf: -D\_FILE\_OFFSET\_BITS=64

445.gobmk: -D\_FILE\_OFFSET\_BITS=64

456.hmmer: -DSPEC\_CPU\_LP64

458.sjeng: -DSPEC\_CPU\_LP64

462.libquantum: -D\_FILE\_OFFSET\_BITS=64 -DSPEC\_CPU\_LINUX

464.h264ref: -D\_FILE\_OFFSET\_BITS=64

471.omnetpp: -D\_FILE\_OFFSET\_BITS=64

473.astar: -D\_FILE\_OFFSET\_BITS=64

483.xalancbmk: -D\_FILE\_OFFSET\_BITS=64 -DSPEC\_CPU\_LINUX



# SPEC CINT2006 Result

Copyright 2006-2017 Standard Performance Evaluation Corporation

Lenovo Global Technology

SPECint\_rate2006 = 2040

ThinkSystem SR630  
(2.40 GHz, Intel Xeon Gold 6148)

SPECint\_rate\_base2006 = 1940

CPU2006 license: 9017

Test date: Aug-2017

Test sponsor: Lenovo Global Technology

Hardware Availability: Aug-2017

Tested by: Lenovo Global Technology

Software Availability: Apr-2017

## Peak Optimization Flags

C benchmarks:

400.perlbench: -prof-gen(pass 1) -prof-use(pass 2) -xCORE-AVX512(pass 2)  
-par-num-threads=1(pass 1) -ipo(pass 2) -O3(pass 2)  
-no-prec-div(pass 2) -auto-ilp32 -qopt-mem-layout-trans=3

401.bzip2: -prof-gen(pass 1) -prof-use(pass 2) -xCORE-AVX512(pass 2)  
-par-num-threads=1(pass 1) -ipo(pass 2) -O3(pass 2)  
-no-prec-div(pass 2) -qopt-prefetch -auto-ilp32  
-qopt-mem-layout-trans=3

403.gcc: -xCORE-AVX512 -ipo -O3 -no-prec-div  
-qopt-mem-layout-trans=3

429.mcf: basepeak = yes

445.gobmk: -prof-gen(pass 1) -prof-use(pass 2) -xCORE-AVX512(pass 2)  
-par-num-threads=1(pass 1) -ipo(pass 2) -O3(pass 2)  
-no-prec-div(pass 2) -qopt-mem-layout-trans=3

456.hmmer: -xCORE-AVX512 -ipo -O3 -no-prec-div -unroll2 -auto-ilp32  
-qopt-mem-layout-trans=3

458.sjeng: -prof-gen(pass 1) -prof-use(pass 2) -xCORE-AVX512(pass 2)  
-par-num-threads=1(pass 1) -ipo(pass 2) -O3(pass 2)  
-no-prec-div(pass 2) -unroll4 -auto-ilp32  
-qopt-mem-layout-trans=3

462.libquantum: basepeak = yes

464.h264ref: -prof-gen(pass 1) -prof-use(pass 2) -xCORE-AVX512(pass 2)  
-par-num-threads=1(pass 1) -ipo(pass 2) -O3(pass 2)  
-no-prec-div(pass 2) -unroll2 -qopt-mem-layout-trans=3

C++ benchmarks:

471.omnetpp: -prof-gen(pass 1) -prof-use(pass 2) -xCORE-AVX512(pass 2)  
-par-num-threads=1(pass 1) -ipo(pass 2) -O3(pass 2)  
-no-prec-div(pass 2)  
-qopt-ra-region-strategy=block  
-qopt-mem-layout-trans=3 -Wl,-z,muldefs  
-L/sh10.2 -lsmartheap

473.astar: basepeak = yes

483.xalancbmk: basepeak = yes



# SPEC CINT2006 Result

Copyright 2006-2017 Standard Performance Evaluation Corporation

**Lenovo Global Technology**

**SPECint\_rate2006 = 2040**

ThinkSystem SR630  
(2.40 GHz, Intel Xeon Gold 6148)

**SPECint\_rate\_base2006 = 1940**

**CPU2006 license:** 9017

**Test date:** Aug-2017

**Test sponsor:** Lenovo Global Technology

**Hardware Availability:** Aug-2017

**Tested by:** Lenovo Global Technology

**Software Availability:** Apr-2017

## Peak Other Flags

C benchmarks:

403.gcc: -Dalloca=\_alloca

The flags files that were used to format this result can be browsed at

<http://www.spec.org/cpu2006/flags/Intel-ic17.0-official-linux64-revF.html>

<http://www.spec.org/cpu2006/flags/Lenovo-Platform-Flags-V1.2-SKL-C.20171004.html>

You can also download the XML flags sources by saving the following links:

<http://www.spec.org/cpu2006/flags/Intel-ic17.0-official-linux64-revF.xml>

<http://www.spec.org/cpu2006/flags/Lenovo-Platform-Flags-V1.2-SKL-C.20171004.xml>

SPEC and SPECint are registered trademarks of the Standard Performance Evaluation Corporation. All other brand and product names appearing in this result are trademarks or registered trademarks of their respective holders.

For questions about this result, please contact the tester.  
For other inquiries, please contact [webmaster@spec.org](mailto:webmaster@spec.org).

Tested with SPEC CPU2006 v1.2.  
Report generated on Wed Oct 4 12:35:34 2017 by SPEC CPU2006 PS/PDF formatter v6932.  
Originally published on 3 October 2017.