



SPEC® CINT2006 Result

Copyright 2006-2017 Standard Performance Evaluation Corporation

Lenovo Global Technology

SPECint®_rate2006 = 4570

ThinkSystem SR950
(2.10 GHz, Intel Xeon Platinum 8160M)

SPECint_rate_base2006 = 4370

CPU2006 license: 9017

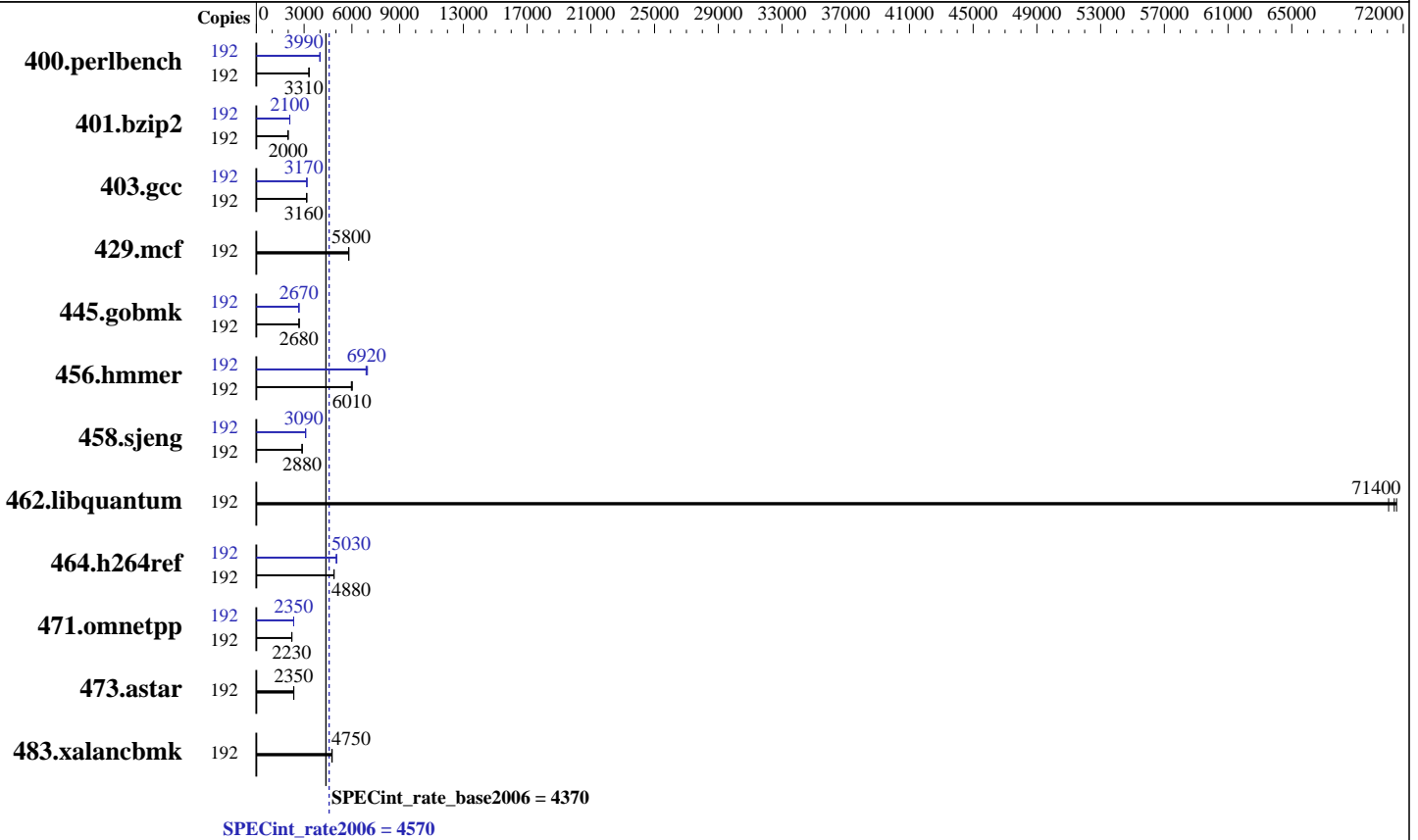
Test date: Aug-2017

Test sponsor: Lenovo Global Technology

Hardware Availability: Sep-2017

Tested by: Lenovo Global Technology

Software Availability: Apr-2017



Hardware

CPU Name: Intel Xeon Platinum 8160M
 CPU Characteristics: Intel Turbo Boost Technology up to 3.70 GHz
 CPU MHz: 2100
 FPU: Integrated
 CPU(s) enabled: 96 cores, 4 chips, 24 cores/chip, 2 threads/core
 CPU(s) orderable: 2,4 chips
 Primary Cache: 32 KB I + 32 KB D on chip per core
 Secondary Cache: 1 MB I+D on chip per core
 L3 Cache: 33 MB I+D on chip per chip
 Other Cache: None
 Memory: 1536 GB (48 x 32 GB 2Rx4 PC4-2666V-R)
 Disk Subsystem: 1 x 800 GB SAS SSD
 Other Hardware: None

Software

Operating System: SUSE Linux Enterprise Server 12 SP2 (x86_64)
 Kernel 4.4.21-69-default
 Compiler: C/C++: Version 17.0.3.191 of Intel C/C++ Compiler for Linux
 Auto Parallel: Yes
 File System: tmpfs
 System State: Run level 3 (multi-user)
 Base Pointers: 32-bit
 Peak Pointers: 32/64-bit
 Other Software: Microquill SmartHeap V10.2



SPEC CINT2006 Result

Copyright 2006-2017 Standard Performance Evaluation Corporation

Lenovo Global Technology

SPECint_rate2006 = 4570

ThinkSystem SR950
(2.10 GHz, Intel Xeon Platinum 8160M)

SPECint_rate_base2006 = 4370

CPU2006 license: 9017

Test date: Aug-2017

Test sponsor: Lenovo Global Technology

Hardware Availability: Sep-2017

Tested by: Lenovo Global Technology

Software Availability: Apr-2017

Results Table

Benchmark	Base							Peak						
	Copies	Seconds	Ratio	Seconds	Ratio	Seconds	Ratio	Copies	Seconds	Ratio	Seconds	Ratio	Seconds	Ratio
400.perlbench	192	567	3310	567	3310	566	3310	192	470	3990	470	3990	468	4010
401.bzip2	192	929	2000	928	2000	932	1990	192	883	2100	882	2100	881	2100
403.gcc	192	490	3160	488	3170	489	3160	192	487	3180	487	3170	487	3170
429.mcf	192	302	5810	302	5800	302	5790	192	302	5810	302	5800	302	5790
445.gobmk	192	751	2680	750	2680	750	2690	192	753	2680	754	2670	753	2670
456.hammer	192	298	6020	298	6010	300	5970	192	260	6890	259	6920	257	6980
458.sjeng	192	808	2880	808	2880	807	2880	192	751	3090	751	3090	751	3090
462.libquantum	192	56.0	71100	55.6	71600	55.7	71400	192	56.0	71100	55.6	71600	55.7	71400
464.h264ref	192	870	4880	872	4870	871	4880	192	845	5030	844	5030	843	5040
471.omnetpp	192	539	2230	539	2230	538	2230	192	511	2350	512	2340	511	2350
473.astar	192	573	2350	574	2350	573	2350	192	573	2350	574	2350	573	2350
483.xalancbmk	192	279	4750	278	4760	279	4740	192	279	4750	278	4760	279	4740

Results appear in the order in which they were run. Bold underlined text indicates a median measurement.

Submit Notes

The numactl mechanism was used to bind copies to processors. The config file option 'submit' was used to generate numactl commands to bind each copy to a specific processor. For details, please see the config file.

Operating System Notes

```
Stack size set to unlimited using "ulimit -s unlimited"
Tmpfs filesystem can be set with:
mount -t tmpfs -o size=800g tmpfs /home
Process tuning setting:
echo 50000 > /proc/sys/kernel/sched_cfs_bandwidth_slice_us
echo 240000000 > /proc/sys/kernel/sched_latency_ns
echo 5000000 > /proc/sys/kernel/sched_migration_cost_ns
echo 100000000 > /proc/sys/kernel/sched_min_granularity_ns
echo 150000000 > /proc/sys/kernel/sched_wakeup_granularity_ns
```

Platform Notes

```
BIOS configuration:
Choose Operating Mode set to Maximum Performance
SNC set to Enable
DCU Streamer Prefetcher set to Disable
Stale AtoS set to Enable
LLC dead line alloc set to Disable
Sysinfo program /home/cpu2006-1.2-ic17.0u3/config/sysinfo.rev6993
Revision 6993 of 2015-11-06 (b5e8d4b4eb51ed28d7f98696cbe290c1)
running on Proton4S-SUSE12SP2 Fri Aug 25 20:31:47 2017
Continued on next page
```



SPEC CINT2006 Result

Copyright 2006-2017 Standard Performance Evaluation Corporation

Lenovo Global Technology

SPECint_rate2006 = 4570

ThinkSystem SR950
(2.10 GHz, Intel Xeon Platinum 8160M)

SPECint_rate_base2006 = 4370

CPU2006 license: 9017

Test date: Aug-2017

Test sponsor: Lenovo Global Technology

Hardware Availability: Sep-2017

Tested by: Lenovo Global Technology

Software Availability: Apr-2017

Platform Notes (Continued)

This section contains SUT (System Under Test) info as seen by some common utilities. To remove or add to this section, see: <http://www.spec.org/cpu2006/Docs/config.html#sysinfo>

From /proc/cpuinfo

```
model name : Intel(R) Xeon(R) Platinum 8160M CPU @ 2.10GHz
4 "physical id"s (chips)
192 "processors"
```

cores, siblings (Caution: counting these is hw and system dependent. The following excerpts from /proc/cpuinfo might not be reliable. Use with caution.)

```
cpu cores : 24
siblings : 48
physical 0: cores 0 1 2 3 4 5 8 9 10 11 12 13 16 17 18 19 20 21 24 25 26
27 28 29
physical 1: cores 0 1 2 3 4 5 8 9 10 11 12 13 16 17 18 19 20 21 24 25 26
27 28 29
physical 2: cores 0 1 2 3 4 5 8 9 10 11 12 13 16 17 18 19 20 21 24 25 26
27 28 29
physical 3: cores 0 1 2 3 4 5 8 9 10 11 12 13 16 17 18 19 20 21 24 25 26
27 28 29
```

cache size : 33792 KB

From /proc/meminfo

```
MemTotal: 1584766204 kB
HugePages_Total: 0
Hugepagesize: 2048 kB
```

From /etc/*release* /etc/*version*

SuSE-release:

```
SUSE Linux Enterprise Server 12 (x86_64)
VERSION = 12
PATCHLEVEL = 2
# This file is deprecated and will be removed in a future service pack or
release.
# Please check /etc/os-release for details about this release.
```

os-release:

```
NAME="SLES"
VERSION="12-SP2"
VERSION_ID="12.2"
PRETTY_NAME="SUSE Linux Enterprise Server 12 SP2"
ID="sles"
ANSI_COLOR="0;32"
CPE_NAME="cpe:/o:suse:sles:12:sp2"
```

uname -a:

```
Linux Proton4S-SUSE12SP2 4.4.21-69-default #1 SMP Tue Oct 25 10:58:20 UTC
2016 (9464f67) x86_64 x86_64 x86_64 GNU/Linux
```

run-level 3 Aug 25 20:30

Continued on next page



SPEC CINT2006 Result

Copyright 2006-2017 Standard Performance Evaluation Corporation

Lenovo Global Technology

SPECint_rate2006 = 4570

ThinkSystem SR950
(2.10 GHz, Intel Xeon Platinum 8160M)

SPECint_rate_base2006 = 4370

CPU2006 license: 9017

Test date: Aug-2017

Test sponsor: Lenovo Global Technology

Hardware Availability: Sep-2017

Tested by: Lenovo Global Technology

Software Availability: Apr-2017

Platform Notes (Continued)

SPEC is set to: /home/cpu2006-1.2-ic17.0u3

Filesystem	Type	Size	Used	Avail	Use%	Mounted on
tmpfs	tmpfs	800G	3.7G	797G	1%	/home

Additional information from dmidecode:

Warning: Use caution when you interpret this section. The 'dmidecode' program reads system data which is "intended to allow hardware to be accurately determined", but the intent may not be met, as there are frequent changes to hardware, firmware, and the "DMTF SMBIOS" standard.

BIOS Lenovo -[PSE105I-1.00]- 06/12/2017

Memory:

48x NO DIMM NO DIMM

48x Samsung M393A4K40BB2-CTD 32 GB 2 rank 2666 MHz

(End of data from sysinfo program)

General Notes

Environment variables set by runspec before the start of the run:

LD_LIBRARY_PATH = "/home/cpu2006-1.2-ic17.0u3/lib/ia32:/home/cpu2006-1.2-ic17.0u3/lib/intel64:/home/cpu2006-1.2-ic17.0u3/sh10.2"

Binaries compiled on a system with 1x Intel Core i7-4790 CPU + 32GB RAM memory using Redhat Enterprise Linux 7.2

Transparent Huge Pages enabled by default

Filesystem page cache cleared with:

shell invocation of 'sync; echo 3 > /proc/sys/vm/drop_caches' prior to run

runspec command invoked through numactl i.e.:

numactl --interleave=all runspec <etc>

Base Compiler Invocation

C benchmarks:

icc -m32 -L/opt/intel/compilers_and_libraries_2017/linux/lib/ia32

C++ benchmarks:

icpc -m32 -L/opt/intel/compilers_and_libraries_2017/linux/lib/ia32

Base Portability Flags

400.perlbench: -D_FILE_OFFSET_BITS=64 -DSPEC_CPU_LINUX_IA32

401.bzip2: -D_FILE_OFFSET_BITS=64

403.gcc: -D_FILE_OFFSET_BITS=64

429.mcf: -D_FILE_OFFSET_BITS=64

445.gobmk: -D_FILE_OFFSET_BITS=64

456.hmmer: -D_FILE_OFFSET_BITS=64

Continued on next page

Standard Performance Evaluation Corporation

info@spec.org

http://www.spec.org/



SPEC CINT2006 Result

Copyright 2006-2017 Standard Performance Evaluation Corporation

Lenovo Global Technology

SPECint_rate2006 = 4570

ThinkSystem SR950
(2.10 GHz, Intel Xeon Platinum 8160M)

SPECint_rate_base2006 = 4370

CPU2006 license: 9017

Test date: Aug-2017

Test sponsor: Lenovo Global Technology

Hardware Availability: Sep-2017

Tested by: Lenovo Global Technology

Software Availability: Apr-2017

Base Portability Flags (Continued)

458.sjeng: -D_FILE_OFFSET_BITS=64
462.libquantum: -D_FILE_OFFSET_BITS=64 -DSPEC_CPU_LINUX
464.h264ref: -D_FILE_OFFSET_BITS=64
471.omnetpp: -D_FILE_OFFSET_BITS=64
473.astar: -D_FILE_OFFSET_BITS=64
483.xalancbmk: -D_FILE_OFFSET_BITS=64 -DSPEC_CPU_LINUX

Base Optimization Flags

C benchmarks:

-xCORE-AVX512 -ipo -O3 -no-prec-div -qopt-prefetch
-qopt-mem-layout-trans=3

C++ benchmarks:

-xCORE-AVX512 -ipo -O3 -no-prec-div -qopt-prefetch
-qopt-mem-layout-trans=3 -Wl,-z,muldefs -L/sh10.2 -lsmartheap

Base Other Flags

C benchmarks:

403.gcc: -Dalloca=_alloca

Peak Compiler Invocation

C benchmarks (except as noted below):

icc -m32 -L/opt/intel/compilers_and_libraries_2017/linux/lib/ia32

400.perlbench: icc -m64

401.bzip2: icc -m64

456.hmmer: icc -m64

458.sjeng: icc -m64

C++ benchmarks:

icpc -m32 -L/opt/intel/compilers_and_libraries_2017/linux/lib/ia32



SPEC CINT2006 Result

Copyright 2006-2017 Standard Performance Evaluation Corporation

Lenovo Global Technology

SPECint_rate2006 = 4570

ThinkSystem SR950
(2.10 GHz, Intel Xeon Platinum 8160M)

SPECint_rate_base2006 = 4370

CPU2006 license: 9017

Test date: Aug-2017

Test sponsor: Lenovo Global Technology

Hardware Availability: Sep-2017

Tested by: Lenovo Global Technology

Software Availability: Apr-2017

Peak Portability Flags

400.perlbench: -DSPEC_CPU_LP64 -DSPEC_CPU_LINUX_X64
 401.bzip2: -DSPEC_CPU_LP64
 403.gcc: -D_FILE_OFFSET_BITS=64
 429.mcf: -D_FILE_OFFSET_BITS=64
 445.gobmk: -D_FILE_OFFSET_BITS=64
 456.hmmer: -DSPEC_CPU_LP64
 458.sjeng: -DSPEC_CPU_LP64
 462.libquantum: -D_FILE_OFFSET_BITS=64 -DSPEC_CPU_LINUX
 464.h264ref: -D_FILE_OFFSET_BITS=64
 471.omnetpp: -D_FILE_OFFSET_BITS=64
 473.astar: -D_FILE_OFFSET_BITS=64
 483.xalancbmk: -D_FILE_OFFSET_BITS=64 -DSPEC_CPU_LINUX

Peak Optimization Flags

C benchmarks:

400.perlbench: -prof-gen(pass 1) -prof-use(pass 2) -xCORE-AVX512(pass 2)
 -par-num-threads=1(pass 1) -ipo(pass 2) -O3(pass 2)
 -no-prec-div(pass 2) -auto-ilp32 -qopt-mem-layout-trans=3

401.bzip2: -prof-gen(pass 1) -prof-use(pass 2) -xCORE-AVX512(pass 2)
 -par-num-threads=1(pass 1) -ipo(pass 2) -O3(pass 2)
 -no-prec-div(pass 2) -qopt-prefetch -auto-ilp32
 -qopt-mem-layout-trans=3

403.gcc: -xCORE-AVX512 -ipo -O3 -no-prec-div
 -qopt-mem-layout-trans=3

429.mcf: basepeak = yes

445.gobmk: -prof-gen(pass 1) -prof-use(pass 2) -xCORE-AVX512(pass 2)
 -par-num-threads=1(pass 1) -ipo(pass 2) -O3(pass 2)
 -no-prec-div(pass 2) -qopt-mem-layout-trans=3

456.hmmer: -xCORE-AVX512 -ipo -O3 -no-prec-div -unroll2 -auto-ilp32
 -qopt-mem-layout-trans=3

458.sjeng: -prof-gen(pass 1) -prof-use(pass 2) -xCORE-AVX512(pass 2)
 -par-num-threads=1(pass 1) -ipo(pass 2) -O3(pass 2)
 -no-prec-div(pass 2) -unroll4 -auto-ilp32
 -qopt-mem-layout-trans=3

462.libquantum: basepeak = yes

464.h264ref: -prof-gen(pass 1) -prof-use(pass 2) -xCORE-AVX512(pass 2)
 -par-num-threads=1(pass 1) -ipo(pass 2) -O3(pass 2)
 -no-prec-div(pass 2) -unroll2 -qopt-mem-layout-trans=3

Continued on next page



SPEC CINT2006 Result

Copyright 2006-2017 Standard Performance Evaluation Corporation

Lenovo Global Technology

SPECint_rate2006 = 4570

ThinkSystem SR950
(2.10 GHz, Intel Xeon Platinum 8160M)

SPECint_rate_base2006 = 4370

CPU2006 license: 9017

Test date: Aug-2017

Test sponsor: Lenovo Global Technology

Hardware Availability: Sep-2017

Tested by: Lenovo Global Technology

Software Availability: Apr-2017

Peak Optimization Flags (Continued)

C++ benchmarks:

```
471.omnetpp: -prof-gen(pass 1) -prof-use(pass 2) -xCORE-AVX512(pass 2)
             -par-num-threads=1(pass 1) -ipo(pass 2) -O3(pass 2)
             -no-prec-div(pass 2)
             -qopt-ra-region-strategy=block
             -qopt-mem-layout-trans=3 -Wl,-z,muldefs
             -L/shl0.2 -lsmartheap
```

473.astar: basepeak = yes

483.xalancbmk: basepeak = yes

Peak Other Flags

C benchmarks:

```
403.gcc: -Dalloca=_alloca
```

The flags files that were used to format this result can be browsed at

<http://www.spec.org/cpu2006/flags/Intel-ic17.0-official-linux64-revF.html>
<http://www.spec.org/cpu2006/flags/Lenovo-Platform-Flags-V1.2-SKL-C.html>

You can also download the XML flags sources by saving the following links:

<http://www.spec.org/cpu2006/flags/Intel-ic17.0-official-linux64-revF.xml>
<http://www.spec.org/cpu2006/flags/Lenovo-Platform-Flags-V1.2-SKL-C.xml>

SPEC and SPECint are registered trademarks of the Standard Performance Evaluation Corporation. All other brand and product names appearing in this result are trademarks or registered trademarks of their respective holders.

For questions about this result, please contact the tester.
For other inquiries, please contact webmaster@spec.org.

Tested with SPEC CPU2006 v1.2.
Report generated on Wed Sep 20 11:07:22 2017 by SPEC CPU2006 PS/PDF formatter v6932.
Originally published on 19 September 2017.