



SPEC® CINT2006 Result

Copyright 2006-2016 Standard Performance Evaluation Corporation

Huawei

SPECint®_rate2006 = 1380

Huawei XH628 V3 (Intel Xeon E5-2690 v4)

SPECint_rate_base2006 = 1320

CPU2006 license: 3175

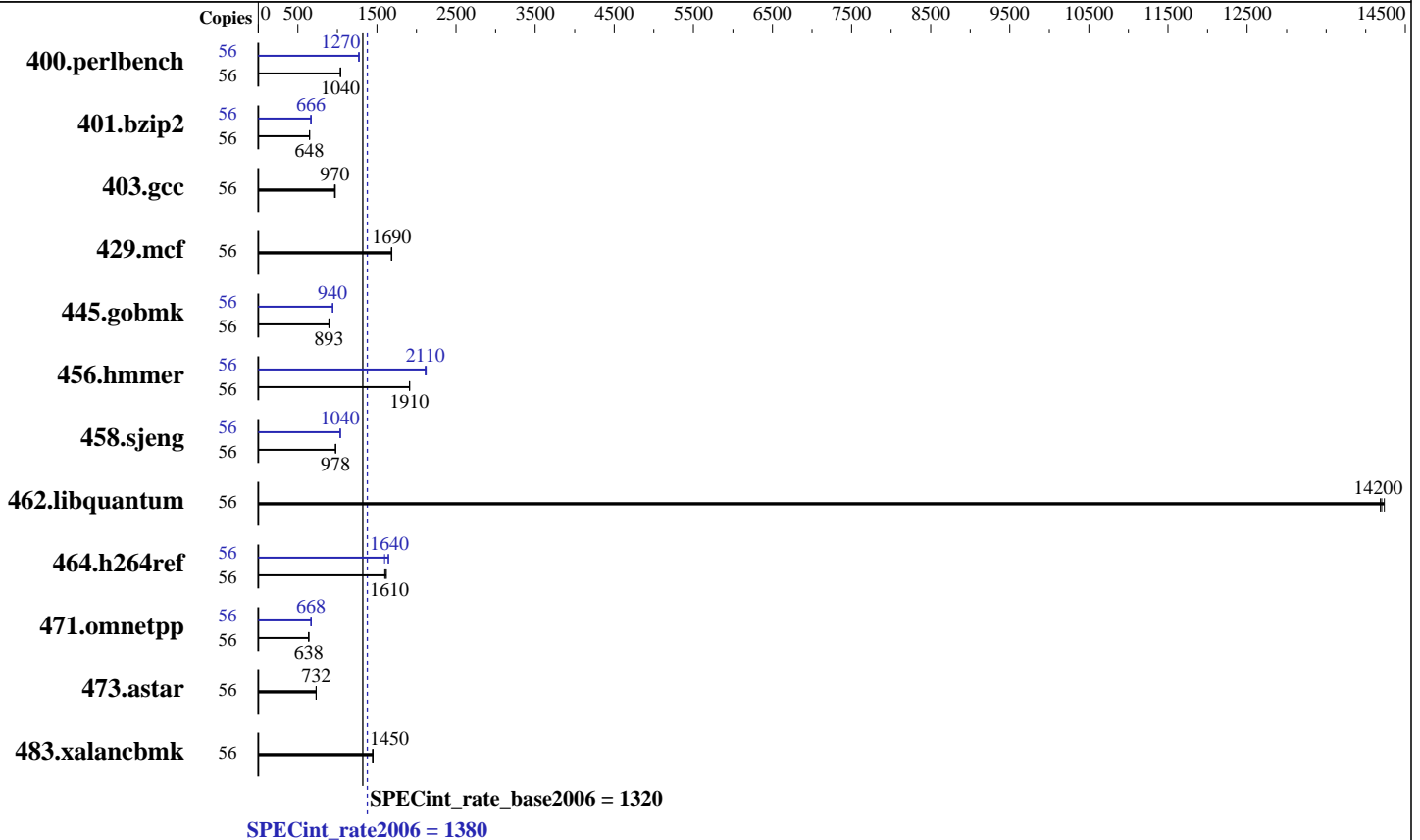
Test sponsor: Huawei

Tested by: Huawei

Test date: Oct-2016

Hardware Availability: Mar-2016

Software Availability: Aug-2015



Hardware

CPU Name: Intel Xeon E5-2690 v4
 CPU Characteristics: Intel Turbo Boost Technology up to 3.50 GHz
 CPU MHz: 2600
 FPU: Integrated
 CPU(s) enabled: 28 cores, 2 chips, 14 cores/chip, 2 threads/core
 CPU(s) orderable: 1,2 chip
 Primary Cache: 32 KB I + 32 KB D on chip per core
 Secondary Cache: 256 KB I+D on chip per core
 L3 Cache: 35 MB I+D on chip per chip
 Other Cache: None
 Memory: 256 GB (16 x 16 GB 2Rx8 PC4-2400T-R)
 Disk Subsystem: 1 x 500GB SATA, 7200 RPM
 Other Hardware: None

Software

Operating System: SUSE Linux Enterprise Server 12 SP1 3.12.49-11-default
 Compiler: C/C++: Version 16.0.0.101 of Intel C++ Studio XE for Linux
 Auto Parallel: No
 File System: xfs
 System State: Run level 3 (multi-user)
 Base Pointers: 32-bit
 Peak Pointers: 32/64-bit
 Other Software: Microquill SmartHeap V10.2



SPEC CINT2006 Result

Copyright 2006-2016 Standard Performance Evaluation Corporation

Huawei

SPECint_rate2006 = 1380

Huawei XH628 V3 (Intel Xeon E5-2690 v4)

SPECint_rate_base2006 = 1320

CPU2006 license: 3175
Test sponsor: Huawei
Tested by: Huawei

Test date: Oct-2016
Hardware Availability: Mar-2016
Software Availability: Aug-2015

Results Table

Benchmark	Base							Peak						
	Copies	Seconds	Ratio	Seconds	Ratio	Seconds	Ratio	Copies	Seconds	Ratio	Seconds	Ratio	Seconds	Ratio
400.perlbench	56	526	1040	<u>527</u>	<u>1040</u>	527	1040	56	<u>430</u>	<u>1270</u>	429	1270	431	1270
401.bzip2	56	834	648	<u>834</u>	<u>648</u>	835	648	56	810	667	<u>812</u>	<u>666</u>	813	665
403.gcc	56	468	964	464	973	<u>465</u>	<u>970</u>	56	468	964	464	973	<u>465</u>	<u>970</u>
429.mcf	56	<u>303</u>	<u>1690</u>	303	1690	304	1680	56	<u>303</u>	<u>1690</u>	303	1690	304	1680
445.gobmk	56	657	894	658	893	<u>658</u>	<u>893</u>	56	625	940	<u>625</u>	<u>940</u>	625	940
456.hammer	56	273	1910	273	1910	<u>273</u>	<u>1910</u>	56	<u>247</u>	<u>2110</u>	246	2120	247	2110
458.sjeng	56	693	978	693	977	<u>693</u>	<u>978</u>	56	654	1040	654	1040	<u>654</u>	<u>1040</u>
462.libquantum	56	81.8	14200	81.5	14200	<u>81.7</u>	<u>14200</u>	56	81.8	14200	81.5	14200	<u>81.7</u>	<u>14200</u>
464.h264ref	56	766	1620	<u>770</u>	<u>1610</u>	775	1600	56	776	1600	752	1650	<u>755</u>	<u>1640</u>
471.omnetpp	56	548	638	549	637	<u>549</u>	<u>638</u>	56	523	669	<u>524</u>	<u>668</u>	527	665
473.astar	56	536	733	538	731	<u>537</u>	<u>732</u>	56	536	733	538	731	<u>537</u>	<u>732</u>
483.xalancbmk	56	266	1450	<u>267</u>	<u>1450</u>	267	1450	56	266	1450	<u>267</u>	<u>1450</u>	267	1450

Results appear in the order in which they were run. Bold underlined text indicates a median measurement.

Submit Notes

The numactl mechanism was used to bind copies to processors. The config file option 'submit' was used to generate numactl commands to bind each copy to a specific processor. For details, please see the config file.

Operating System Notes

Stack size set to unlimited using "ulimit -s unlimited"

Platform Notes

BIOS configuration:
Set Power Efficiency Mode to Performance
Set Snoop Mode to COD mode
Set Patrol Scrub to Disable
Sysinfo program /spec16/config/sysinfo.rev6914
\$Rev: 6914 \$ \$Date:: 2014-06-25 #\$ e3fbb8667b5a285932ceab81e28219e1
running on linux-6392 Fri Oct 21 18:49:33 2016

This section contains SUT (System Under Test) info as seen by some common utilities. To remove or add to this section, see:
<http://www.spec.org/cpu2006/Docs/config.html#sysinfo>

From /proc/cpuinfo
model name : Intel(R) Xeon(R) CPU E5-2690 v4@ 2.60GHz
2 "physical id"s (chips)
56 "processors"
cores, siblings (Caution: counting these is hw and system dependent. The
Continued on next page



SPEC CINT2006 Result

Copyright 2006-2016 Standard Performance Evaluation Corporation

Huawei

SPECint_rate2006 = 1380

Huawei XH628 V3 (Intel Xeon E5-2690 v4)

SPECint_rate_base2006 = 1320

CPU2006 license: 3175
Test sponsor: Huawei
Tested by: Huawei

Test date: Oct-2016
Hardware Availability: Mar-2016
Software Availability: Aug-2015

Platform Notes (Continued)

following excerpts from /proc/cpuinfo might not be reliable. Use with caution.)

```
cpu cores : 14
siblings  : 28
physical 0: cores 0 1 2 3 4 5 6 8 9 10 11 12 13 14
physical 1: cores 0 1 2 3 4 5 6 8 9 10 11 12 13 14
cache size : 17920 KB
```

```
From /proc/meminfo
MemTotal:      264077552 kB
HugePages_Total:      0
Hugepagesize:    2048 kB
```

```
/usr/bin/lsb_release -d
SUSE Linux Enterprise Server 12 SP1
```

```
From /etc/*release* /etc/*version*
SuSE-release:
SUSE Linux Enterprise Server 12 (x86_64)
VERSION = 12
PATCHLEVEL = 1
# This file is deprecated and will be removed in a future service pack or
release.
# Please check /etc/os-release for details about this release.
os-release:
NAME="SLES"
VERSION="12-SP1"
VERSION_ID="12.1"
PRETTY_NAME="SUSE Linux Enterprise Server 12 SP1"
ID="sles"
ANSI_COLOR="0;32"
CPE_NAME="cpe:/o:suse:sles:12:sp1"
```

```
uname -a:
Linux linux-6392 3.12.49-11-default #1 SMP Wed Nov 11 20:52:43 UTC 2015
(8d714a0) x86_64 x86_64 x86_64 GNU/Linux
```

```
run-level 3 Oct 21 18:48 last=5
```

```
SPEC is set to: /spec16
Filesystem      Type  Size  Used Avail Use% Mounted on
/dev/md126p2    xfs   455G  11G  444G   3% /
```

Additional information from dmidecode:

Warning: Use caution when you interpret this section. The 'dmidecode' program reads system data which is "intended to allow hardware to be accurately determined", but the intent may not be met, as there are frequent changes to hardware, firmware, and the "DMTF SMBIOS" standard.

BIOS Insyde Corp. 3.31 08/22/2016

Memory:
16x Ramaxel RMRA6351MB78HBF2400 16 GB 2 rank 2400 MHz

Continued on next page



SPEC CINT2006 Result

Copyright 2006-2016 Standard Performance Evaluation Corporation

Huawei

SPECint_rate2006 = 1380

Huawei XH628 V3 (Intel Xeon E5-2690 v4)

SPECint_rate_base2006 = 1320

CPU2006 license: 3175
Test sponsor: Huawei
Tested by: Huawei

Test date: Oct-2016
Hardware Availability: Mar-2016
Software Availability: Aug-2015

Platform Notes (Continued)

(End of data from sysinfo program)

General Notes

Environment variables set by runspec before the start of the run:
LD_LIBRARY_PATH = "/spec16/libs/32:/spec16/libs/64:/spec16/sh"

Binaries compiled on a system with 1x Intel Core i5-4670K CPU + 32GB memory using RedHat EL 7.1

Transparent Huge Pages enabled with:

echo always > /sys/kernel/mm/transparent_hugepage/enabled

Filesystem page cache cleared with:

echo 1> /proc/sys/vm/drop_caches

runspec command invoked through numactl i.e.:

numactl --interleave=all runspec <etc>

The Huawei XH622 V3 and Huawei XH628 V3 and Huawei XH620 V3 are electronically equivalent.

The results have been measured on a Huawei XH620 V3 model.

Base Compiler Invocation

C benchmarks:

icc -m32 -L/opt/intel/compilers_and_libraries_2016/linux/compiler/lib/ia32_lin

C++ benchmarks:

icpc -m32 -L/opt/intel/compilers_and_libraries_2016/linux/compiler/lib/ia32_lin

Base Portability Flags

400.perlbench: -D_FILE_OFFSET_BITS=64 -DSPEC_CPU_LINUX_IA32
401.bzip2: -D_FILE_OFFSET_BITS=64
403.gcc: -D_FILE_OFFSET_BITS=64
429.mcf: -D_FILE_OFFSET_BITS=64
445.gobmk: -D_FILE_OFFSET_BITS=64
456.hmmer: -D_FILE_OFFSET_BITS=64
458.sjeng: -D_FILE_OFFSET_BITS=64
462.libquantum: -D_FILE_OFFSET_BITS=64 -DSPEC_CPU_LINUX
464.h264ref: -D_FILE_OFFSET_BITS=64
471.omnetpp: -D_FILE_OFFSET_BITS=64
473.astar: -D_FILE_OFFSET_BITS=64
483.xalancbmk: -D_FILE_OFFSET_BITS=64 -DSPEC_CPU_LINUX



SPEC CINT2006 Result

Copyright 2006-2016 Standard Performance Evaluation Corporation

Huawei

SPECint_rate2006 = 1380

Huawei XH628 V3 (Intel Xeon E5-2690 v4)

SPECint_rate_base2006 = 1320

CPU2006 license: 3175
Test sponsor: Huawei
Tested by: Huawei

Test date: Oct-2016
Hardware Availability: Mar-2016
Software Availability: Aug-2015

Base Optimization Flags

C benchmarks:

-xCORE-AVX2 -ipo -O3 -no-prec-div -opt-prefetch
-opt-mem-layout-trans=3

C++ benchmarks:

-xCORE-AVX2 -ipo -O3 -no-prec-div -opt-prefetch
-opt-mem-layout-trans=3 -Wl,-z,muldefs -L/sh -lsmartheap

Base Other Flags

C benchmarks:

403.gcc: -Dalloca=_alloca

Peak Compiler Invocation

C benchmarks (except as noted below):

icc -m32 -L/opt/intel/compilers_and_libraries_2016/linux/compiler/lib/ia32_lin

400.perlbench: icc -m64

401.bzip2: icc -m64

456.hmmer: icc -m64

458.sjeng: icc -m64

C++ benchmarks:

icpc -m32 -L/opt/intel/compilers_and_libraries_2016/linux/compiler/lib/ia32_lin

Peak Portability Flags

400.perlbench: -D_FILE_OFFSET_BITS=64 -DSPEC_CPU_LP64 -DSPEC_CPU_LINUX_X64
401.bzip2: -D_FILE_OFFSET_BITS=64 -DSPEC_CPU_LP64
403.gcc: -D_FILE_OFFSET_BITS=64
429.mcf: -D_FILE_OFFSET_BITS=64
445.gobmk: -D_FILE_OFFSET_BITS=64
456.hmmer: -D_FILE_OFFSET_BITS=64 -DSPEC_CPU_LP64
458.sjeng: -D_FILE_OFFSET_BITS=64 -DSPEC_CPU_LP64
462.libquantum: -D_FILE_OFFSET_BITS=64 -DSPEC_CPU_LINUX
464.h264ref: -D_FILE_OFFSET_BITS=64
471.omnetpp: -D_FILE_OFFSET_BITS=64
473.astar: -D_FILE_OFFSET_BITS=64

Continued on next page



SPEC CINT2006 Result

Copyright 2006-2016 Standard Performance Evaluation Corporation

Huawei

SPECint_rate2006 = 1380

Huawei XH628 V3 (Intel Xeon E5-2690 v4)

SPECint_rate_base2006 = 1320

CPU2006 license: 3175
Test sponsor: Huawei
Tested by: Huawei

Test date: Oct-2016
Hardware Availability: Mar-2016
Software Availability: Aug-2015

Peak Portability Flags (Continued)

483.xalanbmk: -D_FILE_OFFSET_BITS=64 -DSPEC_CPU_LINUX

Peak Optimization Flags

C benchmarks:

400.perlbench: -xCORE-AVX2(pass 2) -prof-gen:threadsafe(pass 1)
-ipo(pass 2) -O3(pass 2) -no-prec-div(pass 2)
-par-num-threads=1(pass 1) -prof-use(pass 2) -auto-ilp32

401.bzip2: -xCORE-AVX2(pass 2) -prof-gen:threadsafe(pass 1)
-ipo(pass 2) -O3(pass 2) -no-prec-div(pass 2)
-par-num-threads=1(pass 1) -prof-use(pass 2) -opt-prefetch
-auto-ilp32 -ansi-alias

403.gcc: basepeak = yes

429.mcf: basepeak = yes

445.gobmk: -xCORE-AVX2(pass 2) -prof-gen:threadsafe(pass 1)
-prof-use(pass 2) -par-num-threads=1(pass 1) -ansi-alias
-opt-mem-layout-trans=3

456.hmmer: -xCORE-AVX2 -ipo -O3 -no-prec-div -unroll2 -auto-ilp32

458.sjeng: -xCORE-AVX2(pass 2) -prof-gen:threadsafe(pass 1)
-ipo(pass 2) -O3(pass 2) -no-prec-div(pass 2)
-par-num-threads=1(pass 1) -prof-use(pass 2) -unroll4
-auto-ilp32

462.libquantum: basepeak = yes

464.h264ref: -xCORE-AVX2(pass 2) -prof-gen:threadsafe(pass 1)
-ipo(pass 2) -O3(pass 2) -no-prec-div(pass 2)
-par-num-threads=1(pass 1) -prof-use(pass 2) -unroll2
-ansi-alias

C++ benchmarks:

471.omnetpp: -xCORE-AVX2(pass 2) -prof-gen:threadsafe(pass 1)
-ipo(pass 2) -O3(pass 2) -no-prec-div(pass 2)
-par-num-threads=1(pass 1) -prof-use(pass 2) -ansi-alias
-opt-ra-region-strategy=block -Wl,-z,muldefs
-L/sh -lsmartheap

473.astar: basepeak = yes

Continued on next page



SPEC CINT2006 Result

Copyright 2006-2016 Standard Performance Evaluation Corporation

Huawei

SPECint_rate2006 = 1380

Huawei XH628 V3 (Intel Xeon E5-2690 v4)

SPECint_rate_base2006 = 1320

CPU2006 license: 3175

Test sponsor: Huawei

Tested by: Huawei

Test date: Oct-2016

Hardware Availability: Mar-2016

Software Availability: Aug-2015

Peak Optimization Flags (Continued)

483.xalanbmk: basepeak = yes

Peak Other Flags

C benchmarks:

403.gcc: -Dalloca=_alloca

The flags files that were used to format this result can be browsed at

<http://www.spec.org/cpu2006/flags/Intel-ic16.0-official-linux64.html>

<http://www.spec.org/cpu2006/flags/Huawei-Platform-Settings-BDW-V1.0.html>

You can also download the XML flags sources by saving the following links:

<http://www.spec.org/cpu2006/flags/Intel-ic16.0-official-linux64.xml>

<http://www.spec.org/cpu2006/flags/Huawei-Platform-Settings-BDW-V1.0.xml>

SPEC and SPECint are registered trademarks of the Standard Performance Evaluation Corporation. All other brand and product names appearing in this result are trademarks or registered trademarks of their respective holders.

For questions about this result, please contact the tester.
For other inquiries, please contact webmaster@spec.org.

Tested with SPEC CPU2006 v1.2.

Report generated on Tue Nov 15 16:05:57 2016 by SPEC CPU2006 PS/PDF formatter v6932.

Originally published on 15 November 2016.