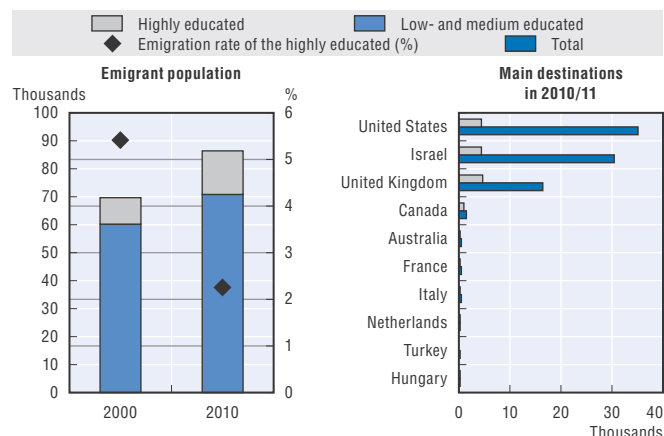


|   |       |  |         |        |
|---|-------|--|---------|--------|
| Total population 2013 (millions)          | 24.4  | <b>Yemen compared to:</b>              | World   | Region |
| Population growth 2013 (annual, in %)     | 2.3   | Human Development Index (HDI)          | 154/187 | 18/19  |
| GDP per capita 2013 (current USD)         | 1 473 | GDP per capita                         | 148/209 | 17/19  |
| GDP growth 2013 (annual, in %)            | 4.2   | Emigration rate                        | 173/203 | 14/19  |
| Poverty rate 2005 (USD PPP 2 a day, in %) | 37.28 | Emigration rate of the highly educated | 139/144 | 16/16  |

Age structure of the population (2013): “0-14”: 40%; “15-64”: 57%; “65+”: 3%

### Emigrant population (15+) living in OECD countries



### Emigrant population: Persons born in Yemen living abroad

|   | 2010/11                                 |       |       |                   |       |       |                |       |       | 2000/01           |
|---|---|-------|-------|-------------------|-------|-------|----------------|-------|-------|-------------------|
|   | OECD and selected non-OECD destinations |       |       | OECD destinations |       |       | Intra-regional |       |       | OECD destinations |
|   | Men                                     | Women | Total | Men               | Women | Total | Men            | Women | Total | Total             |
| Population 15+                              |   |       |       |                   |       |       |                |       |       |                   |
| Emigrant population (thousands)             | 50.0                                    | 41.3  | 91.3  | 46.9              | 40.2  | 87.1  | ..             | ..    | ..    | 71.0              |
| Recent emigrants (thousands)                | ..                                      | ..    | ..    | 3.4               | 4.3   | 7.7   | ..             | ..    | ..    | 5.6               |
| 15-24 (%)                                   | 15.7                                    | 13.9  | 14.9  | 15.2              | 13.5  | 14.4  | ..             | ..    | ..    | 8.3               |
| 25-64 (%)                                   | 56.1                                    | 46.4  | 51.7  | 54.9              | 45.9  | 50.8  | ..             | ..    | ..    | 59.2              |
| 65+ (%)                                     | 28.2                                    | 39.6  | 33.4  | 29.9              | 40.6  | 34.8  | ..             | ..    | ..    | 32.6              |
| Low educated (%)                            | 43.6                                    | 61.9  | 51.8  | 45.9              | 62.5  | 53.6  | ..             | ..    | ..    | 64.0              |
| Highly educated (%)                         | 21.2                                    | 15.4  | 18.6  | 20.6              | 15.0  | 18.0  | ..             | ..    | ..    | 13.5              |
| Total emigration rates (%)                  | 0.7                                     | 0.6   | 0.7   | 0.7               | 0.6   | 0.6   | ..             | ..    | ..    | 0.8               |
| Emigration rates of the highly educated (%) | 2.1                                     | 3.4   | 2.4   | 1.9               | 3.2   | 2.3   | ..             | ..    | ..    | 5.4               |

### Main OECD and selected non-OECD destinations in 2010/11

| Population 15+     | Total     |      | Recent emigrants | Women | Highly educated | 15-24 | Total in 2000/01 |
|--------------------|-----------|------|------------------|-------|-----------------|-------|------------------|
|                    | Thousands | %    |                  |       |                 |       |                  |
| United States      | 35.1      | 38.5 | 13.7             | 39.9  | 12.6            | 24.4  | 17.0             |
| Israel             | 30.9      | 33.8 | ..               | 54.2  | 13.8            | 0.2   | 39.1             |
| United Kingdom     | 16.4      | 18.0 | 15.0             | 46.0  | 28.9            | 16.6  | 11.1             |
| Egypt              | 2.2       | 2.5  | ..               | 37.5  | 42.9            | 30.8  | ..               |
| Canada             | 1.5       | 1.6  | 22.9             | 49.1  | 62.1            | 35.2  | 0.9              |
| Malaysia           | ..        | ..   | ..               | ..    | ..              | ..    | ..               |
| Russian Federation | 0.6       | 0.6  | 61.4             | 8.4   | 35.6            | 44.4  | ..               |
| Australia          | 0.5       | 0.5  | 10.9             | 42.2  | 46.2            | 14.7  | 0.2              |
| France             | 0.4       | 0.4  | 26.9             | 39.1  | 47.4            | 23.6  | 1.6              |
| Italy              | 0.4       | 0.4  | 18.9             | 49.0  | 19.3            | 8.3   | 0.2              |

Indicators of the labour market situation of persons born in Yemen living in OECD countries

|   | 2000/01     |            |             | 2010/11     |            |             |
|---|-------------|------------|-------------|-------------|------------|-------------|
|   | Men         | Women      | Total       | Men         | Women      | Total       |
| Population 15-64  |             |            |             |             |            |             |
| Employment rate (%)   | 63.9        | 37.1       | 52.8        | 69.2        | 21.5       | 49.1        |
| Unemployment rate (%)   | 7.1         | 6.7        | 7.0         | 9.6         | 19.1       | 11.5        |
| Participation rate (%)  | 68.8        | 39.8       | 56.7        | 76.5        | 26.6       | 55.4        |
| <b>Total employed (thousands)</b>                                   | <b>17.8</b> | <b>7.4</b> | <b>25.1</b> | <b>22.4</b> | <b>5.1</b> | <b>27.5</b> |
| Employment rate of the highly educated (%)                          | 76.1        | 59.7       | 69.8        | 78.5        | 45.0       | 65.5        |
| Unemployment rate of the highly educated (%)                        | 5.3         | 5.3        | 5.3         | 7.8         | 12.5       | 9.1         |
| Highly educated in low-and medium-skilled jobs (%)                  | ..          | ..         | 39.7        | ..          | ..         | 43.1        |
| <b>Highly educated employed (thousands)</b>                         | <b>4.3</b>  | <b>2.1</b> | <b>6.5</b>  | <b>5.9</b>  | <b>2.1</b> | <b>8.1</b>  |
| <b>Distribution of employment by occupation (%), population 15+</b> |             |            |             |             |            |             |
| Highly skilled occupations  | ..          | ..         | 24.5        | 22.1        | 33.4       | 24.5        |
| <i>Of which: Health professionals</i>                               | ..          | ..         | ..          | ..          | ..         | 3.5         |
| <i>Of which: Teaching professionals</i>                             | ..          | ..         | ..          | ..          | ..         | 10.3        |
| Medium-skilled occupations  | ..          | ..         | 64.8        | 73.8        | 55.4       | 70.0        |
| Low-skilled occupations   | ..          | ..         | 10.7        | 4.1         | 11.3       | 5.4         |

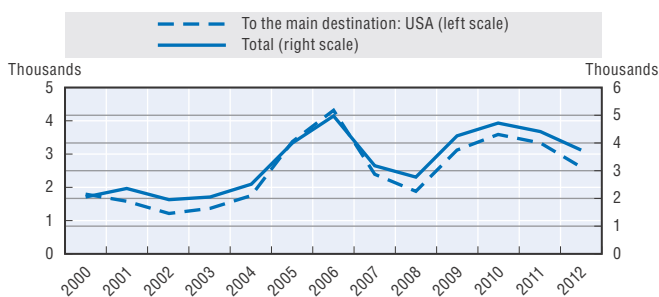
Main OECD destinations by education level in 2010/11 (population 15+)

| Highly educated emigrants (thousands) | Change since 2000/01 (%) | Low educated emigrants (thousands) | Change since 2000/01 (%) |             |             |
|---------------------------------------|--------------------------|------------------------------------|--------------------------|-------------|-------------|
| United Kingdom                        | 4.7                      | +89.9                              | Israel                   | 20.9        | -29.5       |
| United States                         | 4.4                      | +99.6                              | United States            | 16.7        | +94.1       |
| Israel                                | 4.3                      | +30.7                              | United Kingdom           | 7.9         | +45.4       |
| Canada                                | 0.9                      | +116.7                             | Turkey                   | 0.2         | ..          |
| Australia                             | 0.2                      | +126.9                             | Canada                   | 0.2         | +36.0       |
| <b>Total</b>                          | <b>15.6</b>              | <b>+65.2</b>                       | <b>Total</b>             | <b>46.3</b> | <b>+3.9</b> |

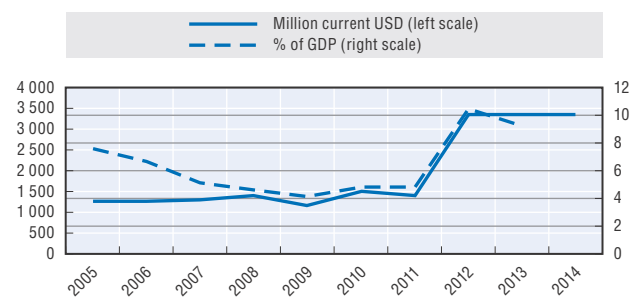
International students from Yemen in OECD countries

| Five main destinations | 2008         | 2010         | 2012         |
|------------------------|--------------|--------------|--------------|
| Germany                | 299          | 431          | 490          |
| United States          | 233          | 263          | 261          |
| Canada                 | 114          | 174          | 129          |
| United Kingdom         | 166          | 136          | 129          |
| France                 | 73           | 73           | 112          |
| <b>Total</b>           | <b>1 049</b> | <b>1 276</b> | <b>1 394</b> |

Legal migrant flows to the OECD



Remittance flows



Ten main OECD countries of destination for legal migrants in 2012 (numbers, % of the total flows to the country): USA (2 620, 0%), DEU (370, 0%), SWE (194, 0%), CAN (170, 0%), JPN (52, 0%), KOR (52, 0%), CHE (41, 0%), POL (40, 0%), FRA (33, 0%), HUN (26, 0%).

Desire to emigrate, 2007-13

|   | Women | 15-24 | Highly educated | Employed | Total |
|---|-------|-------|-----------------|----------|-------|
| Persons who would move permanently, if they had the opportunity to do so (%)                              | 18    | 33    | 39              | 31       | 26    |
| <i>Of which: Persons who are planning to move permanently in the next 12 months (%)</i>                   |       |       |                 |          | 18    |
| <i>Of which: Persons who have already made any preparations for this move (e.g. visa application) (%)</i> |       |       |                 |          | 32    |

Three main desired countries of destination: Saudi Arabia (56%), United Arab Emirates (13%), United States (5%).

Information on data for Israel: <http://dx.doi.org/10.1787/888932315602>.

# Sub-Saharan Africa



**From:**  
**Connecting with Emigrants**  
A Global Profile of Diasporas 2015

**Access the complete publication at:**  
<https://doi.org/10.1787/9789264239845-en>

**Please cite this chapter as:**

OECD (2015), “Yemen”, in *Connecting with Emigrants: A Global Profile of Diasporas 2015*, OECD Publishing, Paris.

DOI: <https://doi.org/10.1787/9789264239845-120-en>

This work is published under the responsibility of the Secretary-General of the OECD. The opinions expressed and arguments employed herein do not necessarily reflect the official views of OECD member countries.

This document and any map included herein are without prejudice to the status of or sovereignty over any territory, to the delimitation of international frontiers and boundaries and to the name of any territory, city or area.

You can copy, download or print OECD content for your own use, and you can include excerpts from OECD publications, databases and multimedia products in your own documents, presentations, blogs, websites and teaching materials, provided that suitable acknowledgment of OECD as source and copyright owner is given. All requests for public or commercial use and translation rights should be submitted to [rights@oecd.org](mailto:rights@oecd.org). Requests for permission to photocopy portions of this material for public or commercial use shall be addressed directly to the Copyright Clearance Center (CCC) at [info@copyright.com](mailto:info@copyright.com) or the Centre français d'exploitation du droit de copie (CFC) at [contact@cfcopies.com](mailto:contact@cfcopies.com).