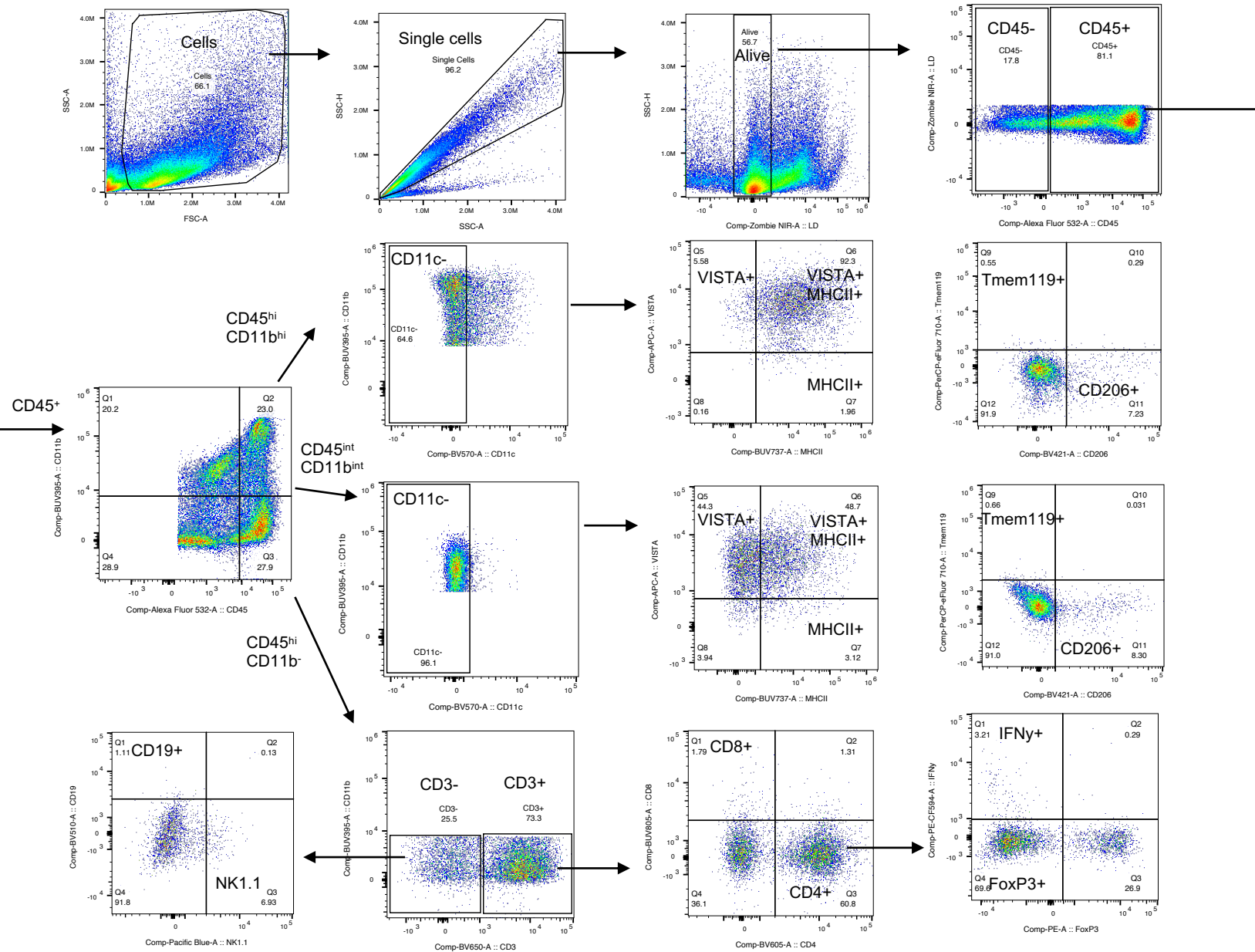


Figure S1

(a) Brain TILs (Full gating- CD45 bead enrichment)



(b)

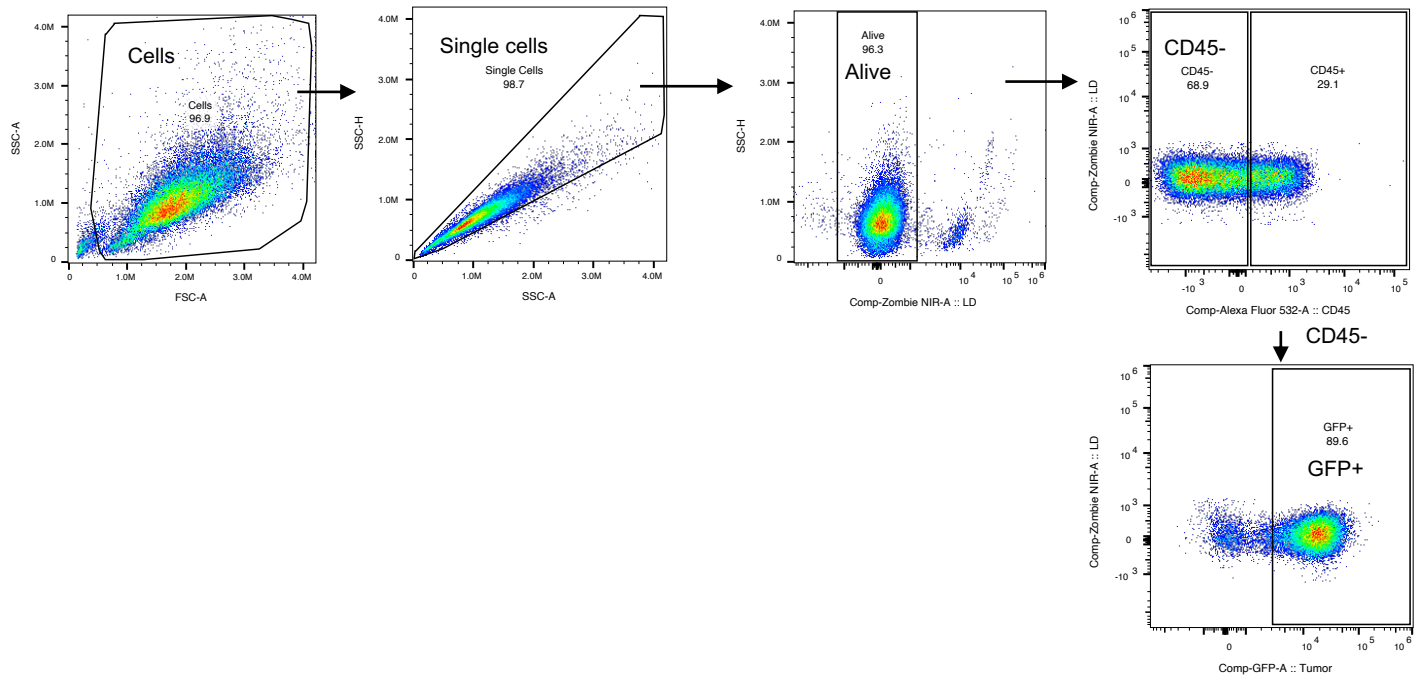
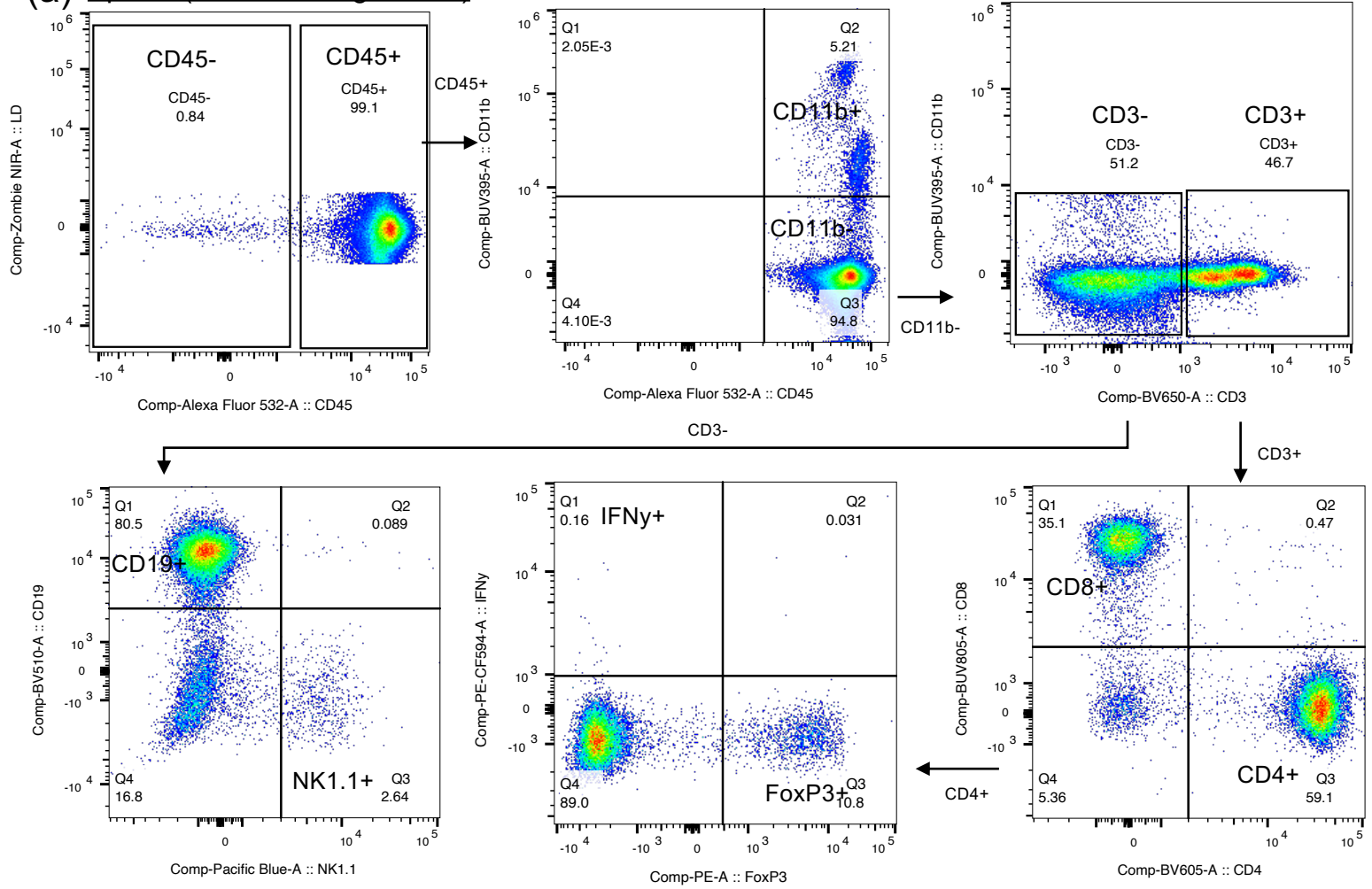


Figure S2

(a) Spleen (tumor-bearing mouse)



(b) Bone marrow (tumor-bearing mouse)

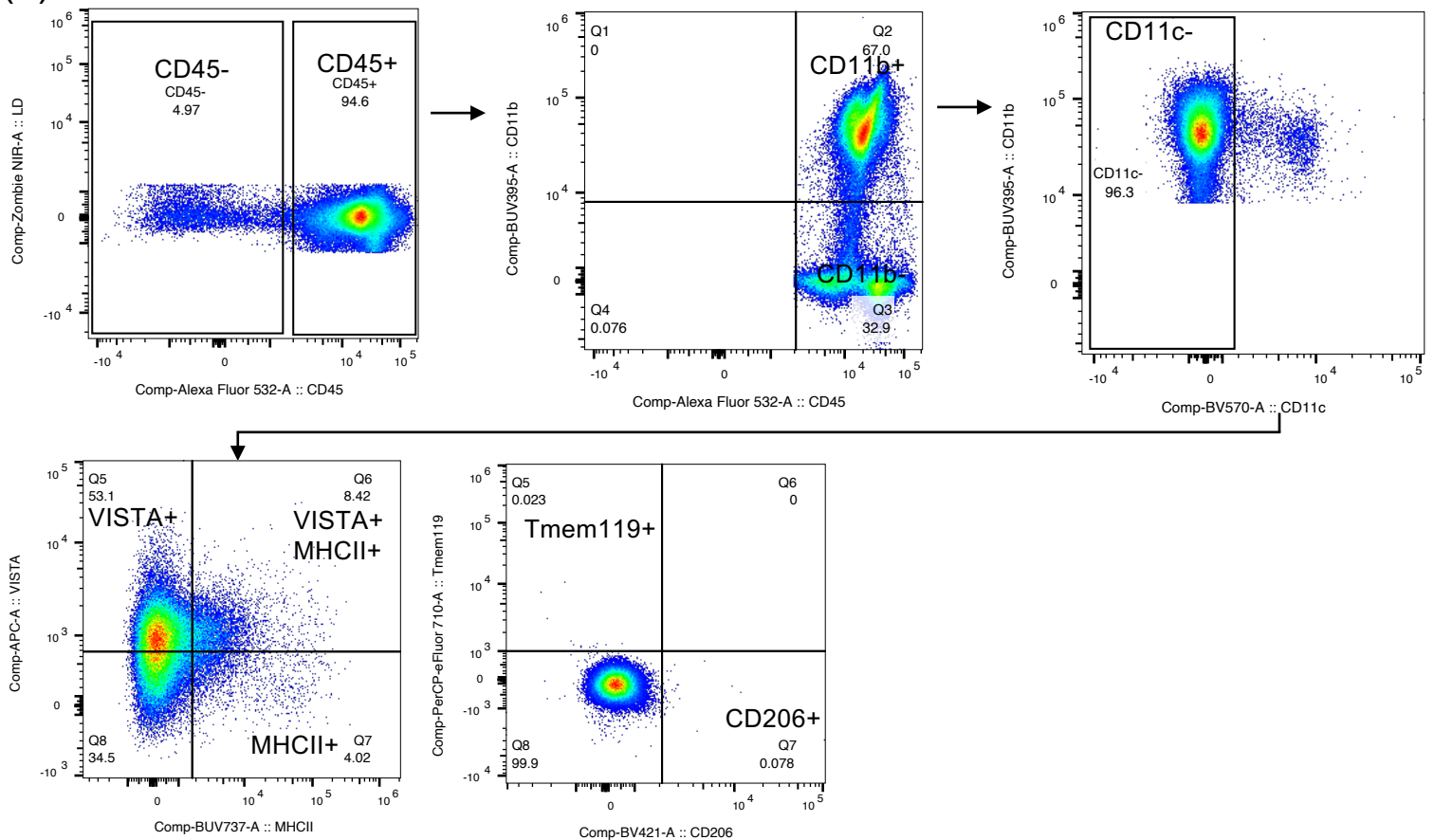


Figure S3

mCB MYC DNp53 (tumor-bearing mice)

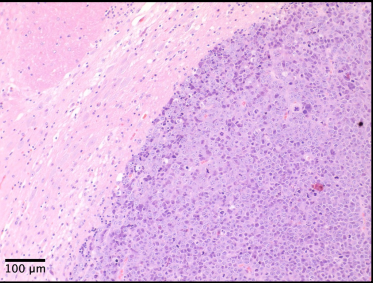
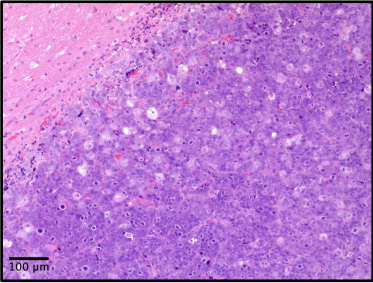
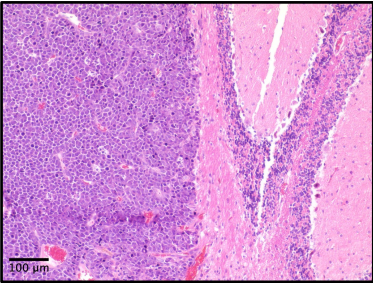
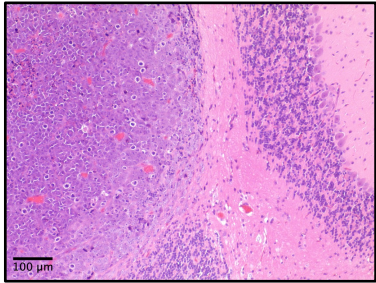
Tumor 1

Tumor 2

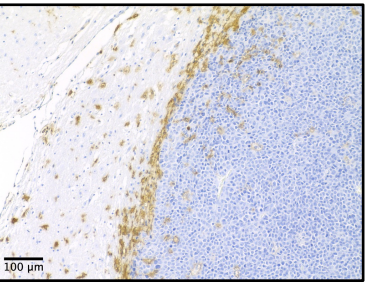
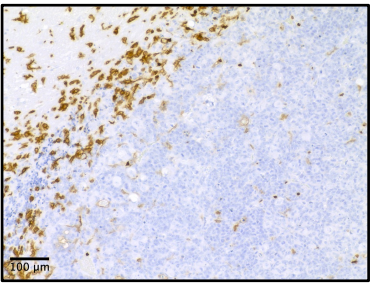
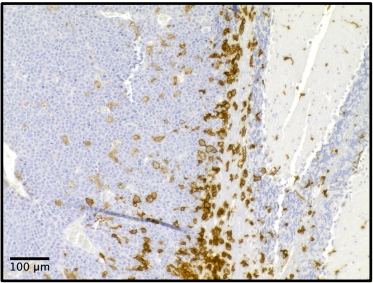
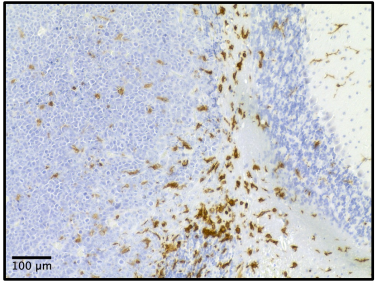
Tumor 3

Tumor 4

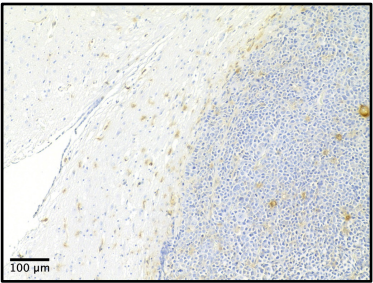
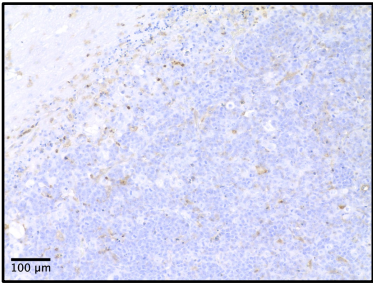
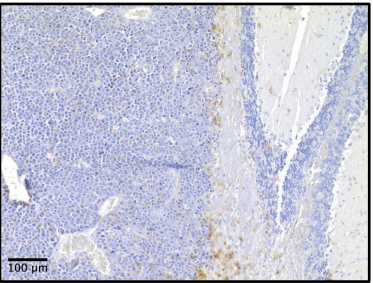
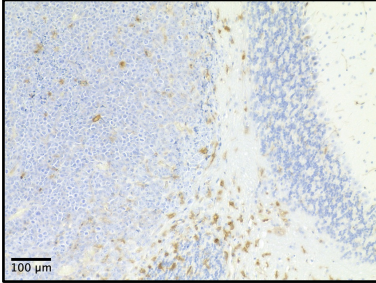
H&E



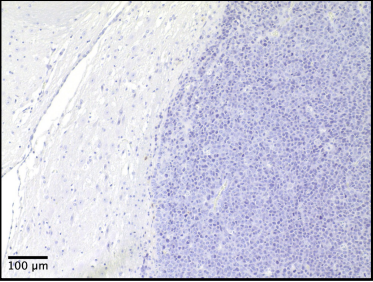
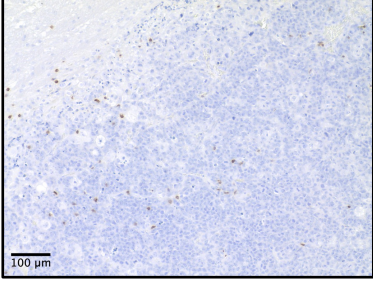
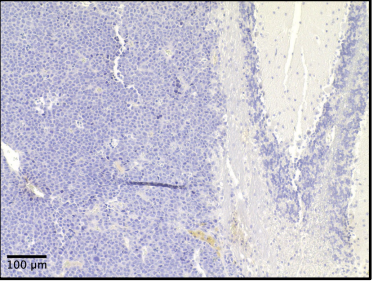
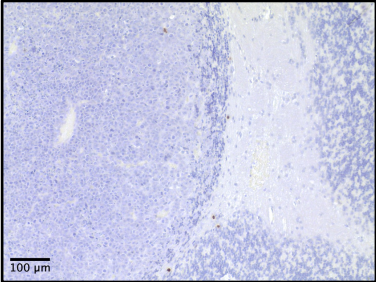
CD11b



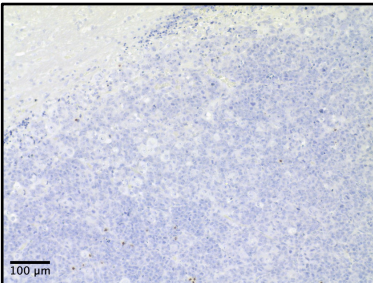
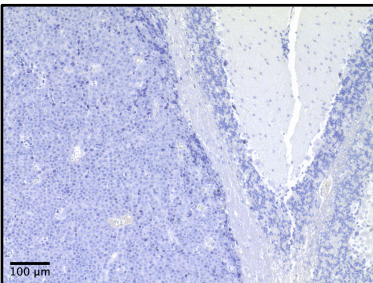
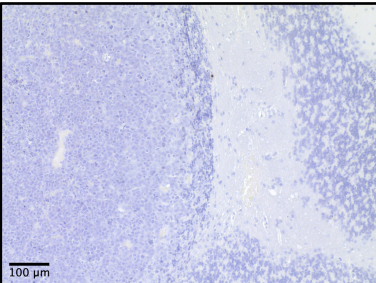
VISTA



CD3



Foxp3



Tissue not available

isotype

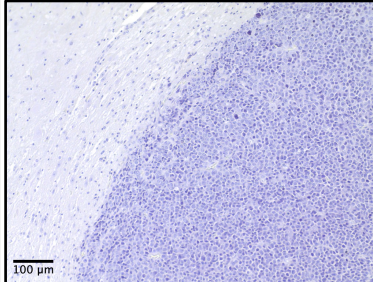
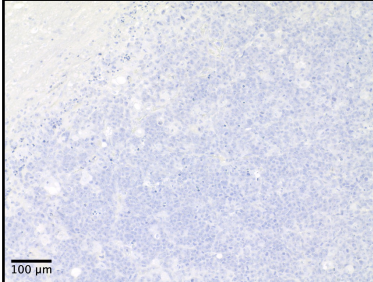
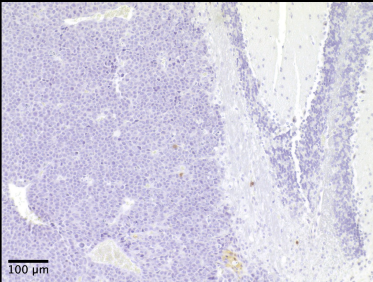
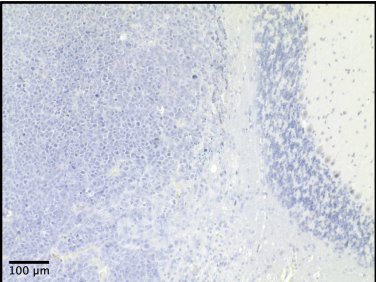
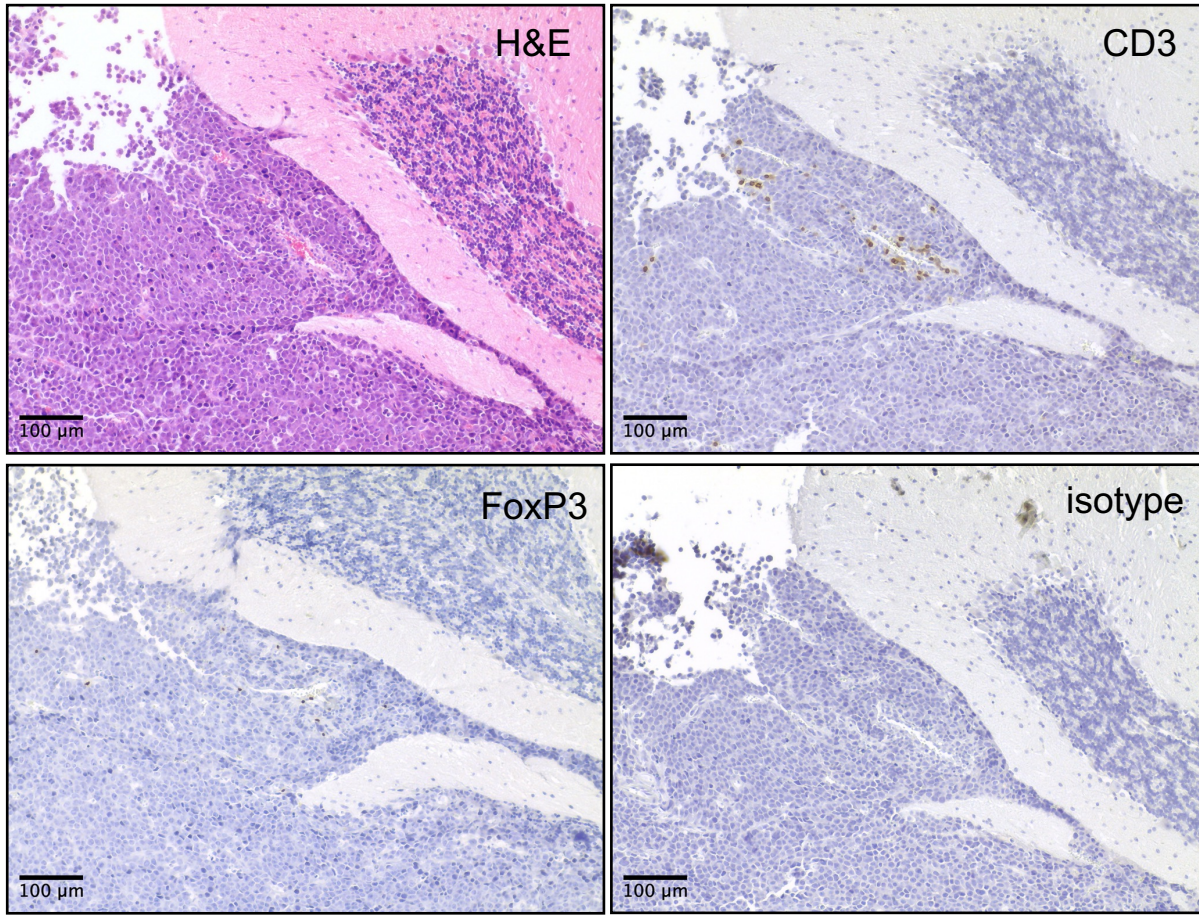


Figure S4

(a) mCB MYC DNp53 (tumor-bearing mouse)



(b) Spleen (tumor-bearing mouse)

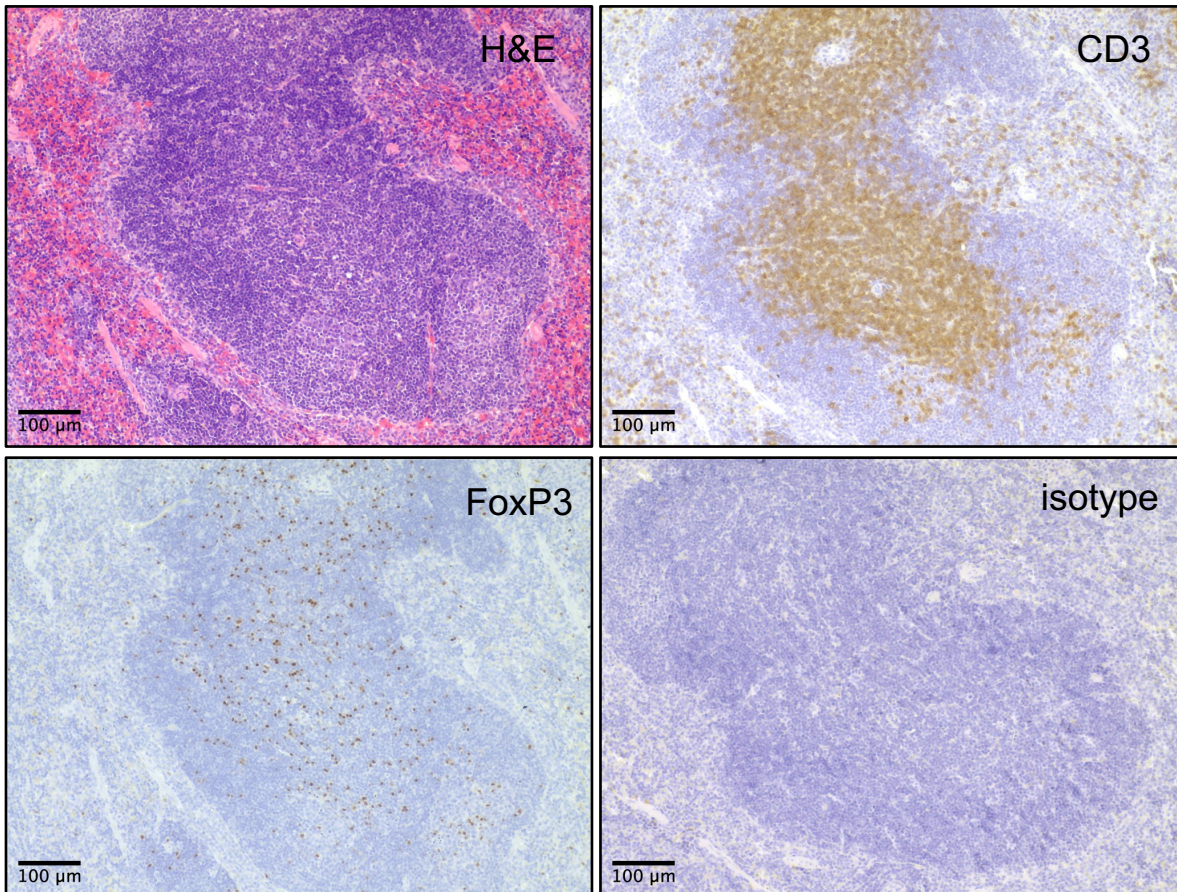


Figure S5

(a)

VSIG3			
Cell line	Sample size (n)	Average (freq of parent)	SD
D283-MED	3	71.4	34.29562654
D425-MED	1	27.1	n/a
mCB DNp53 MYC	3	86.2	15.17399091

VSIG8			
Cell line	Sample size (n)	Average (freq of parent)	SD
D283-MED	2	34.265	43.74869655
D425-MED	3	37.01	32.42954363
mCB DNp53 MYC	4	46.55	29.56692972

