



The Marine  
Mammal Center®

# 2009 ANNUAL REPORT

## BOARD OF DIRECTORS

Merrill L. Magowan / Chair  
Karen Johnson-McKewan / Vice Chair  
Betty Hasler / Secretary  
Sandor Straus / Treasurer  
Pat Callahan  
Chad Carlson  
Richard Cassam  
Jerry Gibbons  
Susan Grau  
Sheila Head  
Beth Inadomi  
Michael Kleeman  
Catherine Kruttschnitt  
Elizabeth Lyman  
Glen Mathison  
Mark McKee  
Martin Richards  
John Simon  
Richard Vance

### Executive Director Emeritus

Peigin Barrett

### Directors Emeriti

Mary Bachman  
Nancy Colvert  
Dennis DeDomenico  
Rev. Douglas Huneke  
Joseph Rogers  
Peter Stauffer  
Beverly Tanner  
Robert Wilson  
Sheldon Wolfe

## STAFF

Dale Anania / Associate Director of Membership  
Sue Andrews / Field Manager, Monterey Bay Operations  
Emily Andrews / Research Assistant  
Ann Bauer / Director of Education  
Michelle Blascow / Veterinary Technician  
Jeffrey Boehm, DVM / Executive Director  
Trish Borg / Retail Sales (PIER 39)  
Erin Brodie / Stranding Coordinator  
Marc Bruvry / Membership Specialist  
Scott Buhl / Stranding Coordinator  
Lauren Campbell / Veterinary Technician  
Annie Coparosa / Retail Sales (PIER 39)  
Marc Davis / Chief Financial & Operations Officer  
Debbie Fauquier / Associate Veterinarian  
Kathleen Glover / Development Assistant  
Denise Greig / Marine Biologist  
Heather Groninger / Office Manager and Executive Assistant  
Frances Gulland, Ph.D., VetMB, MRCVS / Director of Veterinary Science  
Kathleen Hannah / Volunteer Coordinator and Human Resources Assistant  
Jane Hardy / Director of Retail Operations  
Kate Harle / Marketing Strategy and Development Officer  
Lisa Harper Henderson / Site Manager, San Luis Obispo Operations  
Rick Harvey / Retail Sales (PIER 39)  
Jacquie Hilterman / Education Volunteer Supervisor  
Matt Hoard / Lead Life Support Systems and Facilities Technician  
Hanne Larsen / Gift Shop and Kiosk Manager - PIER 39  
Amber Makie / Relief Veterinary Technician  
Suzanne Manugian / Research Assistant  
Trish Mirabella / Marine Science Outreach Instructor  
Sean Morgan / Retail Sales (PIER39)  
Doreen Moser Gurrola / Marine Science Instructor  
Mecca Nelson / Director of Development  
Jeannette Nishida / Retail Sales (Headlands)  
Tenaya Norris / Research Assistant  
Jim Oswald / Communications Manager  
Tony Promessi / Director of Life Support Systems and Facilities  
Nicola Pussini, DVM / Veterinary Intern  
Adam Ratner / Education Intern  
Carlos Rios, CSL, NCA / Medical Technologist  
Jim Robison / Staff Accountant  
Molly Russell / Youth Programs Coordinator  
Dede Sabbag / Administrative Assistant  
Alexandra Sangmeister / Senior Development Officer  
Joel Skaggs / Life Support Systems and Facilities Technician  
Shelbi Stoudt / Stranding Manager  
William Van Bonn, DVM / Staff Veterinarian  
Elizabeth Wheeler / Research Associate  
Deb Wickham / Operations Manager  
Tony Williams / Life Support Systems and Facilities Technician

# TABLE OF CONTENTS

## A Year of Firsts!

Message from the Chairman ..... 3

## Science

Controlling the Rise Of E-Coli in Elephant Seals ..... 4  
Heart Pathology and Domoic Acid Toxicity in Sea Lions ..... 4  
Understanding the Sea Lion Brain With MRI ..... 4  
Domoic Acid in Sea Lion Abortion and Premature Parturition ..... 5  
Sea Lions – Indicators of Marine Environment Health ..... 5  
Marine Pollution and Debris – A Growing Problem ..... 5  
Annual Wildlife Conference..... 5  
Science Highlights ..... 5  
Conference Proceedings / Scientific Contributions ..... 6  
Scientific Collaborations ..... 7

## Animal Stories

Wolfie – An Experimental Surgery ..... 8  
Hawaiian Monk Seals – A Race Against Time..... 8  
Donatello – A Sea Turtle in an Odd Place ..... 9  
Cujo – An Entanglement with a Happy Ending ..... 9  
Round Two – Thriving After an Amputation..... 9  
The Year in Numbers ..... 10

## Expanding Knowledge

AmeriCorps Partnership ..... 11  
New Programs/Tours for School Groups..... 11  
Marine Science Discovery Program ..... 12  
Education Highlights ..... 12  
Partnerships ..... 12  
Education Program Statistics ..... 13

## Grand Opening

The Marine Mammal Center’s Historic Milestone ..... 14  
Capital Campaign Donors ..... 15

## Faces of Volunteers

Marjorie Boor – Sausalito Headquarters..... 16  
Tanya Smart – Fort Fragg Operations ..... 17  
Bill Avellino – MBO Operations..... 17  
Margaret (P.J.) Webb – SLO Operations ..... 17  
List of Volunteers ..... 18

## Donor Highlights

Oracle Corporation ..... 20  
Koret Foundation ..... 21  
Estate of Deane Oberste-Lehn ..... 21  
Ellie Gustafson and Stewart Goossens ..... 21  
Our Donors ..... 22

## Financial Summary

Statement of Activities..... 28  
Statement of Financial Position ..... 28

# A YEAR OF FIRSTS!



My term as Chairman of the Board of Directors these past four years has been greatly enhanced by the Center's wonderful community, including the fine board, dedicated staff and volunteers, and by a clear mission and a focus on being the best at what we do. If one has to end one's final year as Chairman of such a tremendous organization, I'd say I did it with a bang in 2009! What a year! We opened a brand new state-of-the-art hospital, one that we have all dreamed of for more than a decade. Our staff and volunteers now have professional, well-designed, and inspiring facilities to support their work. Our patients have the best hospital of its kind in the country in which to recover, and the facility presents an opportunity for the public to learn and see our work in action. Education, after all, is one of the most important elements of our mission, as we seek to expand knowledge about marine mammals and inspire their conservation and that of their ocean home.

In 2009, we achieved many firsts. Our volunteers and staff admitted over 1,700 marine mammals, more than double our yearly average and a first in our 34-year-history. Rescuing this large number of animals (many were malnourished as a result of a changing environment that affected the food chain) certainly put a strain on our staff and volunteer resources, our equipment, and finances, yet we persevered and made sure every animal received the medical care it needed. And, we had the new facility in which to care for them. Our science team documented medical conditions that continue to give us insights into seal and sea lion health (about which you'll read here) and they lent their expertise in animal care and science to colleagues and visiting veterinarians from around the world. Additionally, our volunteers put in an astonishing 104,000 hours of services, valued at \$1,200,000 (based on California minimum wage) that were received during the fiscal year ending September 30, 2009. We also saw more than 50,000 visitors come to our new facility within a six month period—for me, that means that 50,000 people were touched by our stories and able to hear our message loud and clear. It was definitely a year of dramatic firsts for us!

While the economy was reeling from the recession in 2009, the Center had the foresight to make appropriate budgetary adjustments and ride out that storm, and in the process, developed a stronger analysis of our finances and created a revenue model that I believe will serve us well into 2010 and beyond. We finished the year positively with revenue for the fiscal year ending September 30, 2009 of \$6.5 million. A net deficit of \$.5 million relates primarily to increased depreciation from our new Sausalito facility. It is the passion for our work that is shared by our staff, volunteers, board and the public at large, that validates something I've always known – The Marine Mammal Center's mission has meaning to all of us, and it drives us forward to not only persevere, but to thrive, even in the face of daunting challenges.

My last year as Chairman has been an incredible experience full of hard, yet rewarding work and personal fulfillment. Our success was only possible thanks to the talented team with whom I worked and friends whom I will cherish for the rest of my life. As my colleague on the board, Karen Johnson-McKewan, takes the reins as the Center's new Chairwoman, I feel confident that the Center will continue to flourish and grow as a leader in marine mammal care, inspire us to care about the oceans and its inhabitants, and motivate us to take action to ensure their conservation. Thank you for all that you do to support this wonderful organization and its mission, and for caring about the oceans we all treasure.

Best wishes,

A handwritten signature in cursive script that reads "Merrill L. Magowan".

Merrill L. Magowan

Chairman of the Board, The Marine Mammal Center



The key to understanding marine mammal health



SCIENCE



### Controlling the Rise of Antibiotic Resistance in E-Coli in from Elephant Seals

In this study, the Center aimed to determine if antimicrobial drug use increases resistance of E-coli in wild northern elephant seals treated in rehabilitation and, if so, identify the risk factors involved. The results provided evidence that increased levels of hygiene and cautious or judicious use of antimicrobial therapy might be important in the rehabilitation of wild animals to prevent a rise in the prevalence of antimicrobial resistant bacteria.

### Discovering More about Degenerative Cardiomyopathy and Domoic Acid Toxicity in California Sea Lions

Heart pathology was examined in California sea lions dying within 0-15 days of admittance to the Center, subsequent to acute domoic acid toxicity and was hypothesized to result from an indirect, centrally mediated (brain-heart) mechanism of catecholamine surges associated with seizures or from a direct mechanism due to engagement of domoic acid receptors that may exist in the heart. Researchers looked closely at degenerative cardiomyopathy in California sea lions and found that it represents another syndrome beyond central neurologic disease associated with exposure to domoic acid and may contribute to morbidity and mortality.

### Understanding the Sea Lion Brain Using Magnetic Resonance Imaging (MRI)

Although the California sea lion has been a focal point for many types of studies in marine mammals, the scientific community lacks a non-invasive approach to investigate the anatomy and size of brain structures in this species and other free-ranging, live marine mammals. This study provides the first anatomically labeled, MRI-based atlas derived from a live, marine mammal: the California sea lion. In addition, the study provided 3-D reconstructions and volumes of cerebrospinal fluid, cerebral ventricles, total white matter and gray matter, cerebral hemispheres, cerebellum and brainstem combined, and hippocampal structures all derived from MRI. These measures are the first to be determined for any pinniped species. In California sea lions, this information can be used not only to relate cognitive and sensory capabilities to brain size, but also to research the neurological effects of exposure to domoic acid.

## The Role of Domoic Acid in Abortion and Premature Parturition of California Sea Lions

In this study, the Center's scientists wanted to understand whether domoic acid plays a role in reproductive failure in sea lion rookeries. Sixty-seven aborted and live-born premature pups were sampled on San Miguel Island to investigate the causes of reproductive failure. Analyses included domoic acid, contaminant and infectious disease testing, and histologic examination. Domoic acid was detected in sea lion feces and in 17% of pup samples tested. Such results suggest that domoic acid contributes to reproductive failure in California sea lion rookeries.

## Sea lions as True Indicators of Marine Environmental Health

One of the significant aspects of The Marine Mammal Center's work is investigating health issues that not only affect our marine mammal patients, but may also affect humans. A paper co-authored by the Center, found that some pneumonias and abscesses in California sea lions detected during post mortem examinations at the Center were caused by the bacteria *Klebsiella pneumoniae* which is known to cause infections in humans. While pneumonia in sea lions is not unusual, the fact that a zoonotic pathogen in the marine environment was at the root of these particular cases indicates that humans, who share the coastal environment with marine mammals, could pick up the same bacteria. This study was supported by the John H. Prescott Marine Mammal Rescue Assistance Grant program and the National Oceanic Atmospheric Administration's Oceans and Human Health Initiative.

## Marine Pollution and Debris is a Growing Problem

It's no surprise that marine debris is one of the biggest problems affecting the ocean and marine mammals. In 2009, the Center contributed to two reports on the subject. The first looked at the growing number of fishing gear-related injuries to marine wildlife and revealed that those injuries sustained by California sea lions most commonly occurred during the summer months. An estimated 267 marine species have been affected by entanglement in or ingestion of fishing gear. This has been identified as a major cause of morbidity and mortality in some populations. Juvenile pinnipeds were more commonly injured than adults. Male pinnipeds were twice as likely to be injured as females. Seventy percent of pinniped injury cases were successfully rehabilitated and released. The second report The Marine Mammal Center collaborated on involved entanglement of marine mammals in central California and along the north-west coast. Within a four-year period, 454 entanglements occurred on birds and marine mammals in this region. These cases were documented in live animals and in carcasses for 31 bird species and 9 marine mammal species. The most frequently entangled species were common murrelets, western gulls and California sea lions. The entanglement materials were primarily fishing-related. At the Center, approximately 11-percent of the patients are admitted as a result of an entanglement or marine debris-related injury.

## Annual Wildlife Conference

In August, The Marine Mammal Center's Director of Veterinary Science, Dr. Frances Gulland, marine biologist, Denise Greig, research associate, Liz Wheeler, and veterinary intern, Nicola Pussini, participated in the 58<sup>th</sup> Annual International Conference of the Wildlife Disease Association in Washington State. The team led marine mammal oriented workshops and Greig presented a paper on pathogenic bacteria in the feces of stranded and wild harbor seals – an ongoing study at the Center.

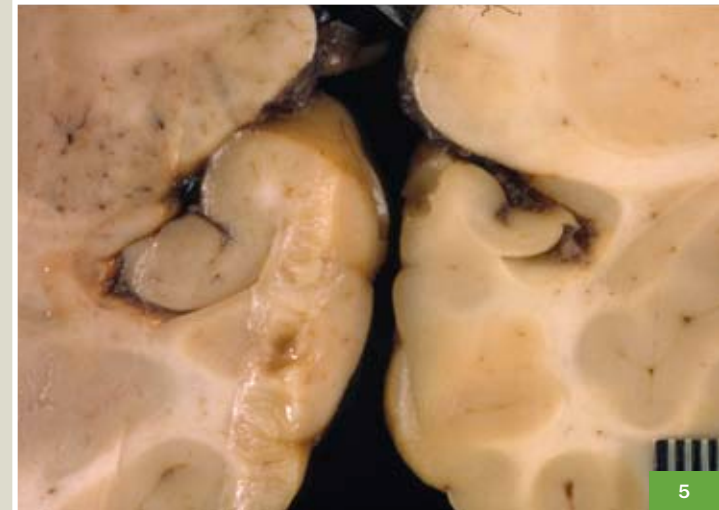
## SCIENCE HIGHLIGHTS

- Staff Veterinarian, Dr. Bill Van Bonn traveled on invitation to the Netherlands to provide anesthesia support to the first successful dolphin general anesthesia in Europe.
- Implanted the first EKG 'loop recorder' into a California sea lion - the first to the team's knowledge in any living marine mammal. The technology allows us to monitor heart activity continuously for up to three years and will be used to better understand cardiac effects of domoic acid.
- Fitted two California sea lions with orthopedic external fixators to fuse infected carpal joints. Confirmed their normal activities following release via satellite telemetry tags.
- Acquired a state-of-the-art digital diagnostic radiographic imaging system to replace the Center's obsolete 'wet film' system. The veterinary team's diagnostic capabilities are already being enhanced.

Previous page, clockwise: A California sea lion patient recovering after a nasty entanglement was removed from his head. Veterinarians perform surgery to repair a broken flipper. Volunteers examine a sea lion brain to find indications of seizure activity.

This page, left-to-right: Domoic acid as seen under a microscope. A cross sample of two California sea lion brains; the one on left healthy, the one on the right diseased with long-term effects of domoic acid toxicosis.

To learn more about domoic acid and other studies at the Center, click here: [www.marinemammalcenter.org/science/top-research-projects/domoic-acid-toxicity.html](http://www.marinemammalcenter.org/science/top-research-projects/domoic-acid-toxicity.html)



## Conference Proceedings

- Dennison, S., Moore, M., Fleetwood, M., Forrest, L. and **Gulland, F.M.** 2009. Application of advanced diagnostic imaging modalities in marine mammal medicine and pathology: three interesting cases. Proceedings of the 40th Annual Conference of the International Association of Aquatic Animal Medicine, May 2-7, San Antonio, Texas
- Fei Fan Ng, T., Manire, C., Suedmeyer, W., Borrowman, K., Langer, T., **Wheeler, E., Gulland, F.**, Ehrhart, L., and Breitbart, M. 2009. Discovering Novel Animal Viruses Using Viral Metagenomics. Proceedings of the 40th Annual Conference of the International Association of Aquatic Animal Medicine, May 2-7, San Antonio, Texas.
- Ferrante, J.A., Arthur, J.M., **Gulland, F.M.**, Hill, E., Almeida, J., and Janech, M. G. 2009. Serum cytokines as predictors of domoic acid exposure in California sea lions (*Zalophus californianus*). Proceedings of the 18th Biennial Conference on the Biology of Marine Mammals, October 12-16, Quebec, Canada.
- Flanary, J.R., Reiner, J.L., Kucklick, J.R., **Gulland, F.M.**, and Becker, P.R. Perfluorinated compounds in plasma, liver and kidney of Northern fur seals (*Callorhinus ursinus*). Proceedings of the Society of Environmental Toxicology and Chemistry 30th annual meeting in North America, November 19-23, New Orleans, LA.
- Greig, D.J., Gulland, F.M.**, and Hall, A.J. 2009. Correlates of survival in harbor seal pups from central California, USA. Proceedings of the 18th Biennial Conference on the Biology of Marine Mammals, October 12-16, Quebec, Canada.
- Greig, D.J.**, Hall, A. J., **Rios, C.A.**, and **Gulland, F.M.** 2009. Hematology and serum chemistry in stranded and wild caught harbor seals in central California: reference ranges, prognosis and explanatory factors. Proceedings of the 40th Annual Conference of the International Association of Aquatic Animal Medicine, May 2-7, San Antonio, Texas.
- Greig, D.J., Gulland, F.M., Wheeler, E.A.**, Jang, S., and Hall, A.J. 2009. Prevalence of potentially pathogenic bacteria in the feces of stranded and wild harbor seals (*Phoca vitulina*) in central California. Proceedings of the 58th Annual International Conference of the Wildlife Disease Association, August 2-7, Blaine, Washington.
- Greig, D.J., Gulland, F.M.**, Ylitalo, G., Yanagida, G., Hall, A.J., Survival and blubber contaminant concentrations of PCB's, DDT's, and PBDE's in harbor seal pups (*Phoca vitulina*) from San Francisco Bay, CA. Proceedings of the Society of Environmental Toxicology and Chemistry 30th annual meeting in North America, November 19-23, New Orleans, LA.
- Gulland, F.M.** 2009. Causes of marine mammal strandings along the California, USA, coast. National Science Museum, September 15, Tokyo, Japan.
- Gulland, F.M.** and **Wheeler, E.** 2009. Field investigations of wildlife mortalities. Workshop. Proceedings of the 58th Annual International Conference of the Wildlife Disease Association, August 2-7, Blaine, Washington.
- Gulland, F.M.** 2009. Hot topics in marine mammals. Workshop. Proceedings of the 58th Annual International Conference of the Wildlife Disease Association, August 2-7, Blaine, Washington.
- Gulland, F.M.** 2009. The impact of biotoxins on marine mammals. Ehime University, September 11, 2009, Matsuyama, Japan.
- Gulland, F.M., Greig, D.**, Lloyd-Smith, J., Zuerner, R. 2009. Molecular markers, MAT and modeling: new evidence for Leptospirosis in California sea lions being endemic within periodic epizootics, defying the host-adapted strain paradigm for Leptospirosis. Proceedings of the 40th Annual Conference of the International Association of Aquatic Animal Medicine, May 2-7, San Antonio, Texas.
- Hall, A., Cordes, L., Thompson, L., Beaton, R., **Greig, D.** and B. McConnell. 2009. The adaption and use of radio frequency identification (RFID) tags for marking harbour seals (*Phoca vitulina*). 23rd Annual Conference of the European Cetacean Society, Mar 2-4, Istanbul, Turkey
- Levine, G., Braun, R., **Gulland, F.M.**, Yamagata, M., Colitz, C., **Wickham, D.**, Schofield, D., Littnan, C., Kashinsky, L. and Kendall, C. 2009. Idiopathic corneal edema in a monk seal pup hand reared from birth. Proceedings of the 40th Annual Conference of the International Association of Aquatic Animal Medicine, May 2-7, San Antonio, Texas.
- McConnel, B., Hall, A.J., Cordes, L., Thompson, L., Beaton, R., and **Greig, D.** 2009. The adaptation and use of radio frequency identification (RFID) tags for marking harbour seals (*Phoca vitulina*). Proceedings of the 18th Biennial Conference on the Biology of Marine Mammals, October 12-16, Quebec, Canada.
- Montie, E.W., **Pussini, N.**, Schneider, G., Battey, T.W.K., Dennison, S., Barakos, J., and **Gulland, F.M.** 2009. Neuroanatomy and brain structure volumes of a live California sea lion (*Zalophus californianus*) from magnetic resonance images: utility in determining effects of domoic acid. Proceedings of the 40th Annual Conference of the International Association of Aquatic Animal Medicine, May 2-7, San Antonio, Texas.
- Norris, T.**, Littnan, C.L., **Gulland, F.M.**, and Harvey, J.T. 2009. Movement, survival, and disease profile of translocated and resident Hawaiian monk seals at Nihoa Island, Hawaii. Proceedings of the 18th Biennial Conference on the Biology of Marine Mammals, October 12-16, Quebec, Canada.
- Rivera, R., Wellehan, J.F.X., Venn-Watson, S., Jensen, E., Carlin, K.P., **Gulland, F.M.**, Wells, R.S., St. Leger, J., Stolen, M., Noke Durden, W., and Nollens, H. 2009. Detection, diversity and epidemiology of marine mammal astroviruses. Proceedings of the 40th Annual Conference of the International Association of Aquatic Animal Medicine, May 2-7, San Antonio, Texas.
- Rowles, T., **Greig, D., Gulland, F.M.**, and Ip, H. 2009. Swine flu, bird flu, and human flu: what does it mean for marine mammals? Proceedings of the 18th Biennial Conference on the Biology of Marine Mammals, October 12-16, Quebec, Canada.
- Schofield, D., Levine, G., **Gulland, F.M.**, and Littnan, C. 2009. The first successful rehabilitation and release of a Hawaiian monk seal pup with an overview of post release monitoring. Proceedings of the 18th Biennial Conference on the Biology of Marine Mammals, October 12-16, Quebec, Canada.
- Wilkin, S., Berman-Kowalewski, M., **Gulland, F.M.**, Calambokidis, J., Mate, B., McKenna, M., Collins, P., Dover, S., Rotstein, D., St. Leger, J., Senyk, N., and Codero, J. 2009. Blue whale ship strikes off southern California. Proceedings of the 18th Biennial Conference on the Biology of Marine Mammals, October 12-16, Quebec, Canada.
- Williams, K.**, and Harvey, J.T. 2009. The effects of storage time on hematology and serum chemistry parameters of the California sea lion (*Zalophus californianus*). Proceedings of the 18th Biennial Conference on the Biology of Marine Mammals, October 12-16, Quebec, Canada.

## Scientific Contributions

- Colegrove, K.M., **Gulland, F.M.**, Naydan, D.K., Lowenstine, L.J. 2009. Tumor morphology and immunohistochemical expression of estrogen receptor, progesterone receptor, p53, and Ki67 in urogenital carcinomas of California sea lions (*Zalophus californianus*). Veterinary Pathology. 46: 642-655.
- Colegrove, K.M., **Gulland, F.M.**, Harr K., Naydan, D.K., Lowenstine, L.J. 2009. Pathological features of amyloidosis in stranded California sea lions (*Zalophus californianus*). Journal of Comparative Pathology. 140: 105-112.
- Dailey, M.D.** 2009. A new species of *Parafilaroides* (Nematoda: filaroididae) in three species of fur seals (*Carnivora: otariidae*) from the southern hemisphere. The Journal of Parasitology. 95(1): 156-159.
- Dau, B.K., Gilardi, K.V.K., **Gulland, F.M.**, Higgins, A., Holcomb, J.B., St. Leger, J. and Ziccardi, M.H. 2009. Fishing gear-related injury in California marine wildlife. Journal of Wildlife Diseases. 45(2): 355-362.
- Dennison, S.E., Forrest, L., and **Gulland, F.M.** 2009. Normal thoracic radiographic anatomy of immature California sea lions (*Zalophus californianus*) and immature northern elephant seals (*Mirounga angustirostris*). Aquatic Mammals. 35 (1): 36-42.
- Fauquier, D.A.**, Kinsel, M.J., **Dailey, M.D.**, Sutton, G.E., Stolen, M.K., Wells, R.S., and **Gulland, F.M.** 2009. Prevalence and pathology of lungworm infection in bottlenose dolphins *Tursiops truncatus* from southwest Florida. Diseases of Aquatic Organisms. 88: 85-90.
- Goldstein, T., Zabka, T.S.**, DeLong, R.L., **Wheeler, E.A.**, Ylitalo, G., Bargu, S., Silver, M., Leighfield, T., Van Dolah, F., Langlois, G., Sidor, I., Dunn, J.L., and **Gulland, F.M.** 2009. The role of domoic acid in abortion and premature parturition of California sea lions (*Zalophus californianus*) on San Miguel Island, California. Journal of Wildlife Diseases. 45(1): 91-108.

Green, J.A., **Haulena, M.**, Boyd, I.L., Calkins, D., **Gulland, F.M.**, Woakes, A.J. & Butler, P.J. 2009. Trial implantation of heart rate data loggers in pinnipeds. *Journal of Wildlife Management*. 73: 115-121.

Montie, E.W., **Pussini, N.**, Schneider, G.E., Batten, T.W.K., Dennison, S., Barakos, J. and **Gulland, F.M.** 2009. Neuroanatomy and volumes of brain structures of a live California sea lion (*Zalophus californianus*) from magnetic resonance images. *The Anatomical Record*. 292:1523-1547.

Moore, E., Lyday, S., Roletto, J., Litle, K., Parrish, J.K., Nevins, H., Harvey, J., Mortenson, J., **Greig, D.**, Piazza, M., Hermace, A., Lee, D., Adams, D., Allen, S., and Kell, S. 2009. Entanglements of marine mammals and seabirds in central California and the north-west coast of the United States 2001-2005. *Marine Pollution Bulletin*. 58: 1045-1051.

Ng, T. F. F., Suedmeyer, W.K., **Wheeler, E.**, **Gulland, F.M.**, and Breitbart, M. 2009. Novel anellovirus discovered from a mortality event of captive California sea lions. *Journal of General Virology*. 90:1256-1261.

**Stoddard, R.A.**, Atwill, E.R., Conrad, P.A., Byrne, B.A., Jang, S., Lawrence, J., McCowan, B., and **Gulland, F.M.** 2009. The effects of rehabilitation of northern elephant seals (*Mirounga angustirostris*) on antimicrobial resistance of commensal *Escherichia coli*. *Veterinary Microbiology*. 133: 264-271.

Torres de la Riva, G., Kreuder Johnson, C., **Gulland, F.M.**, Langlois, G.W., Heyning, J.E., Rowles, T.K., and Mazet, J.A.K. 2009. Association of an unusual marine mammal mortality event with *Pseudo-nitzschia* spp. blooms along the southern California coastline. *Journal of Wildlife Diseases*. 45(1): 109-121.

Wise, S.S., Shaffiey, F., LaCerte, C., Goertz, C.E.C., Dunn, J.L., **Gulland, F.M.**, Aboueissa, A., Zheng, T. and J.P. Wise, Sr. 2009. Particulate and soluble hexavalent chromium are cytotoxic and genotoxic to Stellar sea lion lung cells. *Aquatic Toxicology*. 91: 329-335.

**Zabka, T. S.**, **Goldstein, T.**, C. Cross, R. W. Mueller, C. Kreuder-Johnson, S. Gill, and **Gulland, F.M.** 2009. Characterization of a degenerative cardiomyopathy associated with domoic acid toxicity in California sea lions (*Zalophus californianus*). *Veterinary Pathology*. 46: 105-119.

Zuerner, R.L., Cameron, C.E., Raverty, S., Robinson, J., Colegrove, K.M., Norman, S.A., Lambourn, D., Jefferies, S., Alt, D.P. and **Gulland, F.M.** 2009. Geographical dissemination of *Leptospira interrogans* serovar Pomona during seasonal migration of California sea lions. *Veterinary Microbiology*. 137: 105-110.

## VISITING RESEARCHERS AND RESEARCH COLLABORATIONS

*Karina Acevedo-Whitehouse (Institute of Zoology, London) – Phylogeny and disease susceptibility in California sea lions*

*Jerome Barakos (California Pacific Medical Center) – MRI imaging of California sea lions with domoic acid toxicosis*

*Matthew Breen (North Carolina State University) – Tumor cytogenetics of California sea lions*

*Daphne Carlson Bremer (University of California, Davis) – Diagnosis of protozoal pathogens in California sea lions*

*Alex Chow, Jonna Mazet (University of California, Davis, Wildlife Health Center) – Health impacts of mercury and selenium accumulations in California sea lions*

*Kathleen Colegrove (University of Illinois) – Role of DNA adducts and contaminants in development of carcinoma in California sea lions*

*Jocelyn Flanary (Medical University of South Carolina) – Perfluorinated compounds in California sea lions and northern fur seals*

*Elizabeth Frame, Kathi Lefebvre (NOAA-Northwest Fisheries Science Center) – Domoic acid detection in stranded marine mammals*

*Tracey Goldstein (Marine Ecosystem Health Diagnostic and Surveillance Laboratory) – Morbillivirus surveillance*

*Ailsa Hall (Sea Mammal Research Unit, University of St. Andrews, Scotland) – Epidemiology of cancer in California sea lions*

*Michael Janech, Jason Ferrante (Medical University of South Carolina) – Determination of protein biomarkers as indicators of domoic acid or leptospirosis exposure*

*Susan Klosterhaus, Meg Sedlak (San Francisco Estuary Institute) – Emerging contaminants in harbor seals from San Francisco Bay*

*James Lloyd-Smith (Pennsylvania State University) – Cyclical changes in leptospirosis in California sea lions*

*Milton Levin, Sylvain De Guise (University of Connecticut) – Effects of domoic acid on immune function of California sea lions*

*Eric Montie (University of South Florida) – Relationship between PCBs, PBDEs and domoic acid exposure on California sea lions via MRI and volumetric neuroimaging*

*Colleen Reichmuth (University of California, Santa Cruz) – Assessment of behavior of California sea lions with long-term effects of domoic acid toxicosis*

*James Ryan, Fran Van Dolah, Greg Warr (Hollings Marine Laboratory, Charleston) – Domoic acid microarray*

*Dmitriy Volokhov (Nicholson Research Center) – Mycoplasma surveillance in marine mammals*

*Collette Williams (University of California, Davis) – Electroencephalograms from California sea lions with domoic acid toxicosis*

*Richard Zuerner (National Animal Disease Center) – Leptospirosis epidemiology*

*Moss Landing Marine Laboratories, National Park Service, CalTrans, University of California, Davis, San Francisco State University – Health survey of harbor seals in the San Francisco Bay*

*U.S. Fish and Wildlife Service, US Geological Survey, California Department of Fish and Game – Health and disease investigations in Northern sea otters*

## ADVISORY PANELS

*Hawaiian monk seal recovery team, Member – Frances Gulland*

*The Marine Mammal Commission, Scientific Advisor – Frances Gulland*

*Advisory Board, Oiled Wildlife Care Network, Member – Frances Gulland*

*Working group on marine mammal unusual mortality events, Emeritus Member – Frances Gulland*

## BOARD OF SCIENTIFIC ADVISORS

*Sarah Allen, Ph.D., National Park Service, Point Reyes National Seashore*

*James Harvey, Ph.D., Moss Landing Marine Laboratories*

*Dave Jessup, BS, DVM, MPVM, DiplACZM, Marine Wildlife Veterinary Care and Research Center, California Department of Fish and Game*

*Linda Lowenstine, DVM, Ph.D., ACVP, Department of Veterinary Pathology, Microbiology & Immunology, University of California, Davis*

*Hal Markowitz, Ph.D., Department of Biology, San Francisco State University*

*Jim McBain, DVM, Veterinary Office, Sea World of California*

*Tom Williams, DVM, Monterey Bay Aquarium*



The year 2009 was an exceptionally busy one for The Marine Mammal Center as volunteers and staff worked around-the-clock to respond to and care for 1,704 seals and sea lions – a record in its 34 year history! The majority of these animals were young California sea lion pups that began washing up on beaches along the California coast beginning in late April. Most of them suffered from malnutrition – a sign of an ever-changing ocean environment. Additionally, the Center saw other patients with unusual medical conditions. Some required complex surgeries while others were entangled in marine debris. Even a rare species of turtle appeared in the Center’s rescue range and was rescued!

## ANIMAL STORIES

### Wolfie – An Experimental Surgery

“Wolfie”, a California sea lion with a severe infection of his wrist joints, received special care in 2009 after he was rescued and brought to the Center. When the infection did not respond to antibiotics, staff had to choose between humanely euthanizing Wolfie or attempting an experimental surgery to remove dead and infected bone.

The Center’s veterinarians are not experts in this surgery. In fact, there are no experts in this surgery. However, with each experience, the Center gains knowledge, skills and abilities that can then apply to future patients.

The veterinarians performed an intricate surgery that involved many of the small bones in the joint and the surrounding soft tissues. After surgery, the joint needed to be stabilized to promote healing. They then applied an Agee Wristjack® using a technique called Multiplanar Ligamentotaxis™ designed for use in human wrist fracture stabilization that was graciously donated by a volunteer. Just before Wolfie’s release, veterinarians attached a satellite tracking device in order to follow the sea lion’s journey.

### Hawaiian Monk Seals – A Race Against Time

The Marine Mammal Center continues to collaborate in scientific research into the health and underlying causes of population declines of threatened and endangered marine mammal species. In early September 2009, Dr. Frances Gulland, research assistant Tenaya Norris, and colleagues from the National Marine Fisheries Service (NMFS) satellite tagged nine Hawaiian monk seals as part of a comprehensive effort to compare the Nihoa Island region to French Frigate Shoals. In their work, they found three of six animals tagged last year that were fit and robust this year. They also set in place an array of studies to assess this region versus others in the area for its potential for placing animals in translocation efforts. The Center’s work, in conjunction with NMFS is helping





conserve this species of seal which is nearing extinction. To help Hawaiian monk seals click here: [www.marinemammalcenter.org/about-us/organization-information/awareness-campaigns/save-the-hawaiian-monk-seal.html](http://www.marinemammalcenter.org/about-us/organization-information/awareness-campaigns/save-the-hawaiian-monk-seal.html)

### Donatello – A Sea Turtle in an Odd Place

The Marine Mammal Center was called to rescue a rare Olive Ridley sea turtle that washed ashore at Stinson Beach on November 25. This is the 26th sea turtle the Center has rescued in its 34-year history, and only the third report of an Olive Ridley turtle in Marin waters in the past decade. Donatello, as she was nicknamed, weighed in at just over 54 pounds and was in very poor condition, suffering from dehydration, malnutrition, and low body temperature. Upon arrival, Donatello had all kinds of barnacles, ghost shrimps and even crabs attached to her shell. Veterinarians gave fluids, antibiotics, and vitamins to her. Because of the special care she needed, she was transported to Sea World in San Diego where she was tube-fed twice a day. If she becomes healthy and strong, Donatello could be released as early as Summer 2010.

### Cujo – An Entanglement with a Happy Ending

Cujo, a California sea lion with a neck entanglement, brought back staff and volunteer memories of another former patient named Leault when he arrived at the Center on June 17, 2009. Similarly, a 54 centimeter circumference plastic packing strap was embedded in the animal's 69 centimeter circumference neck! This strap must have been there for months because tissue was actually growing around it and the skin was trying to cover it up. With the strap removed, Cujo healed quickly and easily. Like Leault, he ended up with an ugly scar but a happy ending back in the ocean.

### Round Two – A True Fighter – Thriving After an Amputation

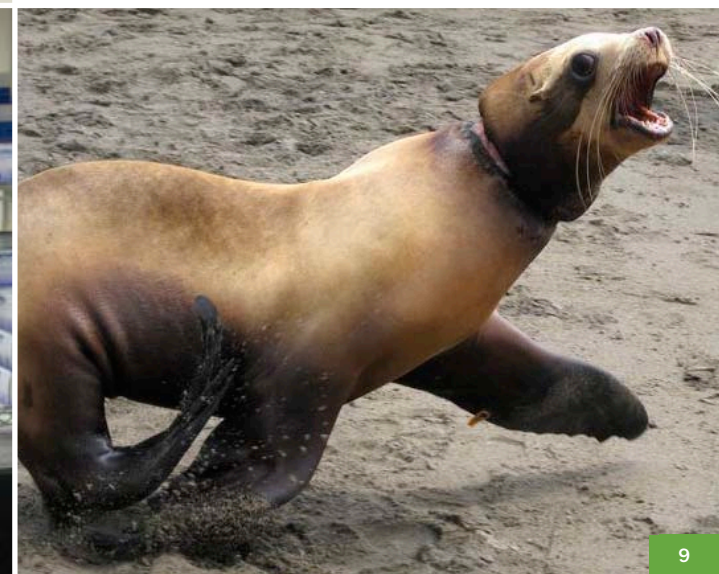
Round Two, a female California sea lion, came to the Center in August with major damage to her right hind flipper. Upon evaluation, it was determined that the trauma and infection were too much to repair. Lucky for Round Two, this was only a hind flipper and she could do well without it. Staff performed a successful amputation and shortly after the medical procedure, Round Two was swimming around and eating well. Veterinarians felt optimistic that she would be healthy enough to return to the wild, and they were right. She was released back to the ocean two months later.



Previous page, clockwise: A Hawaiian monk seal hauls out. Wolfie's x-ray shows the extent of his injuries.

This page, clockwise: Cinta, an endangered Guadalupe northern fur seal, is freed from her entanglement in balloon ribbon. Cujo dashes towards the ocean after his successful rehabilitation. Staff Veterinarian, Dr. Bill Van Bonn, keeps Donatello, an Olive Ridley turtle, moist during examination. Dr. Bill Van Bonn finishes removing an entanglement from Cujo.

For more animal patient success stories, click here: [www.marinemammalcenter.org/patients/success-stories/](http://www.marinemammalcenter.org/patients/success-stories/)





# THE YEAR IN NUMBERS

Percentages are approximate due to rounding procedures.

## Number of animals admitted by species

|                                      | NUMBER       | PERCENT     |
|--------------------------------------|--------------|-------------|
| California sea lions                 | 1,366        | 80%         |
| Northern elephant seals              | 154          | 9%          |
| Pacific harbor seals                 | 124          | 7%          |
| Steller sea lions                    | 1            | 0.1%        |
| Northern fur seals                   | 6            | 0.4%        |
| Guadalupe fur seals                  | 4            | 0.2%        |
| Cetaceans – various species          | 30           | 2%          |
| Southern sea otters                  | 2            | 0.1%        |
| Sea turtles                          | 1            | 0.1%        |
| Non-accessioned animals <sup>†</sup> | 16           | 1%          |
| <b>TOTAL</b>                         | <b>1,704</b> | <b>100%</b> |

<sup>†</sup> Non-TMMC Accession = animals rescued by the Center, but not assigned a field number (e.g. transfer to another agency)

## Rescues due to human interaction

|                     | NUMBER     | PERCENT    |
|---------------------|------------|------------|
| Unauthorized pickup | 18         | 1.1%       |
| Harassed            | 16         | 0.9%       |
| Gunshot             | 18         | 1.1%       |
| Netting             | 10         | 0.6%       |
| Fishing Line        | 4          | 0.2%       |
| Fish hooks/Lures    | 76         | 4.5%       |
| Other marine debris | 18         | 1.1%       |
| Boat strike         | 1          | 0.1%       |
| Oil/Tar             | 22         | 1.3%       |
| <b>TOTAL</b>        | <b>183</b> | <b>11%</b> |

Percent is of total animals accessioned

## Disposition

|   | NUMBER | PERCENT |
|---|--------|---------|
| Total Animals Accessioned in 2009*      | 1,704  | 100%    |
| Entered rehabilitation                  | 1,533  | 90%     |
| Placed                                  | 10     | 1%      |
| Relocated/Transfer                      | 59     | 3%      |
| Carcass/Dead on arrival                 | 113    | 7%      |
| Released to wild**                      | 522    | 34%     |
| Euthanized/Died in Treatment**          | 998    | 65%     |
| Admitted in 2008/Disposition in 2009*** | 5      | 0.3%    |
| Still on-site as of January 1, 2010**   | 2      | 0.1%    |

\* Every animal receives an accession number, but not all animals enter rehabilitation

\*\* Percentage based on animals that entered rehabilitation, not on total animals accessioned

\*\*\* 0.3% of disposition animals for 2009, were admitted in 2008

Each year the education department's efforts reach thousands of students as well as the visiting public.

Teaching others about marine mammals and environmental stewardship is a core value. Our mission says it best – to expand knowledge about marine mammals – their health and that of their ocean environment – and to inspire their global conservation.

What better way to achieve this than to educate visitors, from children to seniors, via a number of key educational programs.



## EXPANDING KNOWLEDGE

### New Programs/Tours for School Groups

A brand-new building with audio visual enhancements has facilitated the creation of new programs for school groups. Since 2008 the education team has worked with Program Developer, Lori Mann, and Evaluations Specialist, Margaret Kadoyama, to develop new programs and tours specifically for school groups. The process involved teacher focus groups, staff brainstorm sessions and pilot testing. Teachers can now choose from one-to-two-hours of programming for their classes. Each grade level has a specific themed program and tour that supports the California State Academic Standards and is enriched by unique hands-on activities and many others. Programs include **Marine Mammal Babies** and **Seals, Sea Lions and Sustenance**. Please visit [www.MarineMammalCenter.org](http://www.MarineMammalCenter.org) to view the new line-up. Program development and evaluation was supported by funds from the San Francisco Foundation and PG&E.

### New Partnership with Conservation Corps North Bay

Opening the new facility to visitors and groups increased demands on education staff. So, in 2009, a new partnership between the Center and Conservation Corps North Bay (CCNB) who administers AmeriCorps in Marin, was both timely and welcome. The two AmeriCorps interns are college graduates that commit to a term of service from October to August. In addition to job training, they gain the chance to make a difference in both their lives and that of their community.

An AmeriCorps volunteer's role is to educate children, seniors, and other visitors about the Center's work, to inspire interest in the ocean environment and to encourage action in marine mammal protection. AmeriCorps



## COASTAL CLEAN UP AT RODEO BEACH



- In just one day, 156 volunteers collected 153 lbs. of trash! In all, they gathered 24 lbs. of recyclables.
- The top three items included 1,422 cigarettes/cigarette filters, 969 food wrappers, and 503 styrofoam pieces.
- Groups that participated included Oracle employees, K-2nd grade students and teachers from Modesto's University Charter School, and "Youth and the Ocean", a group of Latino middle and high school students and parents from Oakland with staff from the Berkeley's Lawrence Hall of Science.

## RECORD NUMBER OF VISITORS



The Center has been busy! More than 50,000 visitors came to the hospital from opening day in June to December 31, 2009, in addition to another 50,548 participants in our Education Program/Tours. Click here to learn how you can visit the Center today!: [www.marinemammalcenter.org/visiting-us/](http://www.marinemammalcenter.org/visiting-us/)

interns act as docents, lead tours, and teach classroom programs at the hospital facility and at school sites with the Whale Bus. This new partnership was funded by the Schow Foundation and the Gamble Foundation.

## Marine Science Discovery Program

This year marks the end of funding from NOAA's Bay Watershed Education Training Program Grant for the Center's Marine Science Discovery Program (MSDP). The funding covered half the operating budget for MSDP for the past three years. During that time, 732 low-income students from Richmond, Oakland, San Francisco, Santa Rosa and Pittsburg have benefited from this unique program. The grant supported evaluations of the program that improved academic rigor and developed evaluation tools and a grading rubric. Labs were improved with the purchase of new equipment such as a hand-held field lab GPS, microscopes, a flat screen monitor, and bone clone specimens. Other funders of MSDP in 2009 included the Sato Foundation and the Union Bank of California Foundation. We thank all of the supports of MSDP for helping us help students expand their knowledge about marine mammals and the ocean.



## EDUCATION DEPARTMENT COLLABORATIVE PARTNERS

- AmeriCorps, Washington DC*
- American Association of Zookeepers, Topeka, KS*
- Año Nuevo State Reserve, Pescadero, CA*
- Aquarium of the Bay, San Francisco, CA*
- California Coastal Commission (Coastal Clean Up Day), San Francisco, CA*
- Cordell Bank National Marine Sanctuary, Pt. Reyes, CA*
- Conservation Corps North Bay, San Rafael, CA*
- Farallones Marine Sanctuary Association, San Francisco, CA*
- GasLight Tours, Sausalito, CA*
- Gulf of the Farallones National Marine Sanctuary, San Francisco, CA*
- Headlands Institute, Sausalito, CA*
- Lindsay Wildlife Museum, Walnut Creek, CA*
- National Association of Museum Exhibitors, Western Region, Santa Cruz, CA*
- National Park Service, Golden Gate National Recreation Area, Sausalito, CA*
- Oakland Zoo Docents, Oakland, CA*
- PIER 39, San Francisco, CA*
- Point Bonita YMCA, Sausalito, CA*
- Point Reyes National Seashore Association (Field Seminars), Pt. Reyes Station, CA*
- Point Reyes National Seashore Winter Wildlife Docents, Pt Reyes Station, CA*
- Romberg Tiburon Center for Environmental Studies, Tiburon, CA*
- San Francisco Bay Model, Sausalito, CA*
- San Francisco Zoo Docents, San Francisco, CA*
- Scientific Art Studio, Richmond, CA*
- Seaman's Training Institute, Sausalito, CA*

## PROFESSIONAL ORGANIZATION MEMBERSHIPS

- Cultural Connections, Albany, CA*
- National Marine Educators Association, Ocean Springs, MS*
- Southwest Marine/Aquatic Educators Association*

## EDUCATION STAFF PARTICIPATION ON BOARDS AND COMMITTEES

- Environmental Education Council of Marin (EECOM) Board Chair – Ann Bauer, Director of Education*
- Cordell Marine Sanctuary Foundation -- Doreen Gurrola Co-founder and Secretary*

## All Visitors/Participants Served

|  |                |
|--|----------------|
| Drop-in visitors at the Center's hospital in Sausalito | 46,718         |
| Participants in programs/tours/fairs/events            | 50,548         |
| Participants in self-guided tours                      | 3,939          |
| <b>TOTAL SERVED</b>                                    | <b>101,205</b> |

## Participants in Education Programs/Tours/Fairs/Events

### At The Marine Mammal Center Hospital in Sausalito:

|  |        |
|--|--------|
| Programs/tours for school and public groups                          | 16,604 |
| Docent-led tours for individuals                                     | 974    |
| Marine Science Discovery Program* classes                            | 164    |
| Research Discovery Day Program for high school/junior college groups | 358    |
| Call to the Rescue program for school groups                         | 2,514  |
| Guided BeachWalk programs for schools at Rodeo Beach                 | 1,013  |
| Donor release events   | 628    |
| Grand Opening events   | 1,774  |

### Outreach:

|   |               |
|---|---------------|
| Whale Bus outreach to schools                       | 7,693         |
| Sea Lions in the City program at PIER 39            | 563           |
| Lectures for docents/public/teachers                | 427           |
| Speakers Bureau presentations by field office staff | 1,214         |
| Fairs throughout our rescue range                   | 16,622        |
| <b>TOTAL PARTICIPANTS</b>                           | <b>50,548</b> |

\*MSDP served low-income students from Oakland High, Oakland Tech, Pittsburg High and Elsie Allan of Santa Rosa



# GRAND OPENING

## If you build it, they will come!

The Marine Mammal Center celebrated a historic milestone on June 5, 2009, re-opening its newly re-built hospital headquarters in Sausalito. Just over 300 people were in attendance including the original founders, Lloyd Smalley, Patricia Arrigoni and Paul Maxwell, in addition to staff, volunteers, board members, and honored guests.

Since the public opening of The Marine Mammal Center's newly rebuilt headquarters in June, more than just a record number of patients have come through our doors (see animal success story). Between June and December, more than 50,000 guests visited! All have been amazed and introduced to a state-of-the-art facility designed to provide the best medical care for the patients, a collaborative working environment for staff and volunteers, and an educational experience designed to inspire young and old minds alike about the wonders of marine mammals and the ocean environment. We think our patients are impressed too. You can visit the new headquarters in Sausalito seven days a week between 10 a.m. and 5 p.m.



On this page, clockwise: Special guests, board members, and supporters (including the Center's co-founder Lloyd Smalley, philanthropist, Gretchen Kimball, and board chairman, Merrill Magowan) cut the ribbon. Underground in one of the missile silos that now is home to the new water filtration system for the pools. Board chairman, Merrill Magowan, co-founder Lloyd Smalley, and the Center's executive director, Jeff Boehm. Next three pictures, guests enjoy a festive grand opening celebration!

To read more about the Grand Opening of the new hospital, click here: [www.marinemammalcenter.org/assets/pdfs/communications/release-newsletters/spring-09.pdf](http://www.marinemammalcenter.org/assets/pdfs/communications/release-newsletters/spring-09.pdf)



# CAPITAL CAMPAIGN

The Marine Mammal Center thanks and proudly recognizes the support of all donors that contributed \$500 or more to its capital campaign through December 31, 2009.

For a full listing, visit [www.marinemammalcenter.org/assets/pdfs/development/capital-campaign-supporters.pdf](http://www.marinemammalcenter.org/assets/pdfs/development/capital-campaign-supporters.pdf)

## CAPITAL CAMPAIGN DONORS \$500+

### \$1,000,000+

The Lothar Doil No. D-1 Trust  
Richard & Rhoda Goldman Fund  
Geoffrey C. Hughes Foundation, Inc.  
William and Gretchen Kimball Fund  
Marin Community Foundation  
NOAA National Marine Fisheries Service  
The David and Lucile Packard Foundation  
Eric Roberts/The Roberts Foundation  
Faye & Sandor Straus/The Firedoll Foundation  
Wayne & Gladys Valley Foundation

### \$250,000 - \$999,999

Anonymous Donors  
DMARLOU Foundation  
Thelma Doelger Trust for Animals  
Page and Seth Evans  
Susan Gray  
William Randolph Hearst Foundation  
Koret Foundation  
The Kresge Foundation  
Catherine Kruttschnitt  
Cinnie and Merrill Magowan  
The Gordon and Betty Moore Foundation  
Peter and Janecke Stauffer/The David P. Wheatland Charitable Trust

### \$100,000 - \$249,999

Mary Bachman and William Downing  
Bernice Barbour Foundation, Inc.  
Jeanne Bobbitt  
Carmen Christensen  
Carole and Daniel Eitingon  
Dawn  
Thelma Doelger Charitable Trust  
Sakurako and William Fisher  
Mary and Clinton Gilliland  
Susan Grau  
Derry and Charlene Kabcenell  
Irma Penniman Kahn  
Conservation Education Fdn.

Laurel Foundation  
LSP Moss Landing, LLC  
McBean Family Foundation  
PG&E  
The Schow Foundation  
Charles and Helen Schwab  
Shirley Sichel

### \$50,000 - \$99,999

Anonymous Donors  
Elinor Patterson Baker Trust  
CEMEX, Inc.  
Elena and Arthur Court  
James Cummings  
Sandra Brod and Dennis DeDomenico  
Darcy and William Gulland  
Rachael and Marshall Levine/Lasky Charitable Lead Trust  
Morris Stulsaft Foundation

### \$10,000 - \$49,999

Joseph J. Albanese, Inc.  
Lisa Albani  
The Atmos Foundation  
Autodesk, Inc.  
Deena and Jeffrey Bellman  
Pamela Westfall Bochte and Bruce Bochte  
The Bothin Foundation  
Kelli and G. Steven Burrill  
Patricia R. Callahan  
Chevron  
Cloud Star  
John Philip Coghlan and Tina Vindum  
The Mary A. Crocker Trust  
Drakes Bay Fundraising  
Diane and James Ducey  
The Dun Foundation  
Lois A. Enslow  
Marion and Jack Euphrat "Flipper"  
Foundation for Friendship  
Werner Frischknecht  
Alison C. Fuller  
Bernice Hansen  
Betty and William Hasler  
Sheila Head  
Inge Hirschfeld  
Christine and Robert Hunter  
Beth Inadomi and Tim Newell  
A.E. & Martha Michelbacher Fund  
Karen Johnson-McKewan and Tom McKewan

Kate and Tom Klein  
Suzanne and Jerry Knecht  
Mary Jo and Dick Kovacevich  
Ambassador and Mrs. Arthur C. Latno, Jr.  
Marie and Barry Lipman  
The J.M. Long Foundation  
Betty White Ludden  
Sunny and Mark McKee  
John McQuown  
Kathleen and George Myers  
The Otter Cove Foundation  
Pat and Mauricio Pages  
The Samuel P. Pardoe Foundation  
The Robison Family Foundation  
Marilyn and George Rose  
The Sato Foundation  
Shamrock Materials  
Ann and Ellis Stephens/The Compton Foundation  
Barbara and Cyrus Sweet  
Margaretta Taylor  
Craig Veconi  
Lisa and Mark Wan  
Richard and Liz Ward  
Wells Fargo  
Grace and Rowan Wilson  
Nancy and Gregory Wilson  
Arlene and Alan Young

### \$500 TO \$9,999

Anonymous Donors  
Stan Jensen  
Daughters of the American Revolution  
JoAnne and Bruce Ward  
Adelaide Kirkbride  
B.J. Griffin  
Catherine and Collin Lau  
Sally Holt  
Susan and Elihu Rose Foundation, INC  
Julie Barney  
Marion Cope  
Lynn and Bruce Dayton  
Coco Hall  
Douglas Kinney  
Irene Laird  
Jennifer McComb  
Carole & Robert McNeil  
Peter Peterson  
Regina Phelps  
Roger Strauch  
Jennifer and John Vogel  
Kristin and Graham Charles

Brian MacDonald  
Catherine and Richard MacDonald  
Val and Jerry Gibbons  
Pilar Bass  
Linda and Tim Curtis  
O. William Leidel  
Mary Jo & Hank Greenberg  
Animal Welfare Foundation  
The Hakman Family Foundation  
Peter and Patricia Arrigoni  
Darla and Richard Bastoni  
Barbara and David Beasley  
Maria Berry  
Gordon Chamberlain  
Debra Coyman  
Chris and Dorian De Maio  
Susan Diekman  
Sylvia Elsser  
Florence and Steven Goldby  
Grace A. Hughes Fund  
Jeanie and Murray Kilgour  
Michael Kleeman  
Karen Larsen  
Cheryl and Kevin Leslie  
Judith and John Rothman  
Anne and Edwin Seipp  
Cindy and Denis Shepherd  
Peter and Peggy Trethewey  
Marla and Gregory Turek  
Lisa Wild  
Robert Wilson  
William Bailey  
Steven Johnson  
Christine Shields  
Stacy Bezyack and Dana Bialashewski  
Sophie and Robert Guarasci  
Richard Ferris  
Jason and Alison Goldheim  
Mara Kerr and Mark DiOrio  
Meghen and Ken Kurtzig  
Carole Mason  
Evan Mizrachi  
Nico Mizrahi  
Olivia Orr  
Arlene Rodriguez  
Gina Sanfilippo and Frederick Rober  
Cynthia Schramm  
Bettina Warner  
Sharon Liu  
Lee and Bill Webber  
Claiborne W. Gooch, III  
Charitable Remainder  
Virginia and Chuck Quick  
Patricia Elvebak  
Deborah Gabris

Suzanne Golt  
Tina and John Greig  
Carol A. Frate and Lawrence Schwantkl  
Christine Scott  
Donna and Joe Shands  
Tammy Jones  
Kate and Richard Vance  
Stephen Simpkin  
Gideon Hausner Jewish Day School  
Helen and Dave Burton  
Joanna Cassese  
Patricia Weiss  
Amy Geissinger  
George Tomberlin  
Lara and Steve Compton  
Natalia Yankoffski  
Joyce Linker  
County of Marin  
Mr. Douglas Adams  
Barbara Anderson  
Elizabeth Avakian  
Shana Bagley  
Ann and Peter Bauer  
Ruth Beckner  
Tom and Anne Bishop  
Jacqueline Brotz  
Dovre Busch  
Chad Carlson and Ed Westerman  
Diane Cassam  
Ya-Nan Chou and Jesse W. Parker  
Grace Davis  
David Dossetter  
Winnifred Ellis  
Kristi Enns  
Monique Gerards-King and Robert King  
Sheila Giannini  
Karen and John Glickman  
Hilary Gold  
Moire and Steve Grumer  
Vicki Gutgesell  
Pamela Herlihy  
Lesly Higgins and Joseph Bunker  
Mary and Alan Hill  
Sharon and Charles James  
David Johnson  
Sir Michael Kadoorie  
Anita and Mark Karier  
Pamela Kelly  
Sonoko Konishi and Ewan Johnson  
Jean and Bill Lane  
Dr. Roger Lang and Mrs. Sue Lang

Meredith Lattin  
Martha and Thomas Lawler  
Sandra Legan  
Maria Lemos  
Elizabeth Lilley  
Janet MacKenzie and Jacklyn MacKenzie  
Alan C. Mathewson  
Mary Maurer  
Margaret Maw  
Sherrie McCullough  
Mara Melandry  
Elsa Mikkelsen  
Paul Morton  
Glee and Chuck Murphy  
Judith Nadai  
Gloria Nelson  
Mecca Nelson  
Paul Padou  
Jane and Richard Peattie  
Eileen and Phillips Perkins  
Ellen Purcell and Mike Tschantz-Hahn  
Barbara Rambo  
Sarah and Jeff Robinson  
Lorelei Rockwell and Wayne T. Kennedy  
Laura Roebuck and William Meehan  
John Sainsbury  
Michael Scharfenstein  
Susan Shapiro  
Fran and Robert Smith  
Laurence Stearns  
Karen and Darrell Thomas  
Nona and William Thomas  
Betty and John Toney  
Stephanie and Wes Tydlaska  
Kathy Tyson  
Jean and Phil Warren  
David Wilson  
Maureen Wincor  
Rhoda and Sheldon Wolfe  
Chris Wood  
Jane and Dean Woodman  
Terry and Douglas Young  
Barbara and Fillmore Marks  
Krystal and John Konrad  
Jane Kroesche and Jason Mardesich  
James Lechleitner  
John Marra  
Yvette Smith  
Sherrill Dunning-Riley  
Celeste McAdam  
Marie Kazan-Komarek  
Susan Burns

Mitchell and Denise Fong  
Patrick and Mary Blenderman  
Janis and Michael Crawford  
Anna S. Jeffrey  
Nancy Merchant  
Kat Rudd  
Lincoln Shaw  
Margaret Webb  
Karen Loida  
Linda and Chris Gridley  
Mary Donoghue  
Craig Scott  
Monterey Electronics  
The Turnip Top Foundation  
The W.O.O.D. Foundation  
Naomi and Bruce Appleton  
Whitney and Peter Bardwick  
Maureen and Eric Bates  
Mary and James Birle  
Jeff Boehm and Keith Rosenthal  
Shirley and Jeff Causey  
Elizabeth and Paul Denison  
Donald Ellis  
Roy Farrow  
Virginia and William Ferguson  
Karla Fernandez  
Carol Gamble  
Myles Goldfein  
Christopher Gomez  
Christine Grella  
Lynn Huddleson  
Sharron and Robert Jackman  
Dawn Kinney  
Lisa Kruidenier  
Jennifer and William Larzelere  
Harriet Lehmann  
Michael McCone  
Alice Methfessel  
Karla and Gary Miller  
Edwina and Michael Mule  
Margery and Iain Nicolson  
Elizabeth B. Fannon and William F. O'Leary  
Dr. Carol A. O'Neil  
June Padilla  
Arlene Peacock  
Bonnie and Paul Plakos  
Robert Pritikin  
Alexandra Sangmeister  
Lylah Schieck  
Phyllis Schwartz  
Patricia Shea  
Scott Sollers  
Karen Sorg

.....



## FACES OF VOLUNTEERS

### Marjorie Boor – Sausalito Headquarters

Marjorie Boor, a Sausalito volunteer, has discovered a fascinating nexus between her work as a professional and her efforts as a volunteer.

Marjorie, a diagnostic cardiac and vascular sonographer, has applied this expertise to marine mammals. Partnering with the Center's veterinary science department, she has been involved in projects to investigate various heart conditions in pinnipeds via echocardiography and 12 lead EKG – diagnostic tools that are well-developed in human medicine, but that have been lacking consistent methodology in marine mammal medicine. "I love that, for a change, years of research that has been done in humans is being applied in a meaningful way to these intriguing diving mammals," notes Boor.

The convergence of wildlife in a metropolitan setting fascinates Marjorie. "Responding to stranded animals in urban areas never ceases to amaze me," comments Marjorie. "People forget that we are surrounded by the bay, even where I live in Oakland. In addition to getting to see pockets of life that I would otherwise be unaware of such as estuary offices, coast guard docks, and tug boat bases, it's always rewarding to see how surprised and moved people are when these animals turn up in unexpected places."

It's a juxtaposition "vividly illustrated last year when a sea lion (nicknamed Fruitvale) turned up on interstate 880 in the early morning commute," remembers Boor. "It's a nice reminder that, as residents of the Bay Area, they are our neighbors."

The Marine Mammal Center was originally founded by three volunteers and still relies upon a dedicated force of 900 volunteers from Mendocino to San Luis Obispo counties. These devoted volunteers make up 95% of the Center's total personnel. Volunteers serve as docents, work on animal care crews, rescue animals, staff the retail operations, and offer support to the veterinary science and administrative staff.

By the end of 2009, our volunteers had dedicated 108,741 hours of their time helping The Marine Mammal Center rescue and treat marine mammals in need, and educating the public about the connections we all share with the oceans and its inhabitants.

Learn how you can become a volunteer! Visit [www.marinemammalcenter.org/what-you-can-do/volunteer/](http://www.marinemammalcenter.org/what-you-can-do/volunteer/)







### Tanya Smart – Fort Fragg Operations

Tanya Smart, part of the Fort Bragg Operations rescue crew, has many vivid memories spanning her volunteer years. One of her earliest is of a harbor seal pup from Eureka. “I was so inexperienced that I thought its intestines were hanging out from a shark bite. But it was the umbilical cord and Jack turned out to be Jacqueline,” remembers Smart.

Another favorite was Wayne, a big sea lion at the Center, who would rush over to see her every time she walked by his pen. “I think I looked like the tastiest salmon he’d ever seen,” notes Smart. Other memories include getting stuck in the mud in the Tiburon flats with a big sea lion vocalizing, netting her first big sea lion at Caspar Beach, rescuing Morty, and being dragged all over the beach and into the water by Gorby.

Tanya volunteers to be close to the animals. “I want to connect: to do something to give back when we as humans take so much. I look them in the eye, and somehow I hope to convey that I care, I love, and I’m trying to help. The sea lions give back in the way they look at you – it does seem they understand,” says Smart.

### Bill Avellino – MBO Operations

Bill Avellino started volunteering at the Monterey Bay Operations (MBO) after happening upon a rescue while on a beach run near his home. Over the past decade of volunteer work, his most memorable moment was falling off the rocks and into the bay at Breakwater Cove during a rescue attempt! “I never dreamed how fast one sinks when fully clothed,” recalls Avellino. “Fortunately, another volunteer grabbed my collar just in time.”

Bill also recounts a torturous half-mile hike under Bixby bridge to rescue an elephant seal. “It seemed like a swamp,” said Avellino.

His favorite rescue was with yet another volunteer. “We rescued an elephant seal pup from Davenport beach after a climb down a cliff that appeared to be impossible,” notes Avellino. “Since it was around Chinese New Year, we named the animal ‘Fortune Cookie’ and the beach is now called ‘Fortune Cookie Beach’ by the staff.”

Bill treasures two rewards of volunteering in particular: “seeing a release and watching the joyful reaction when a new volunteer is handed the net for his first rescue.”

Bill feels that volunteering is a way “to give God’s creatures a helping hand after all the abuse man has heaped upon them.”

### Margaret (P.J.) Webb – SLO Operations

P.J. first became involved as a volunteer in our San Luis Obispo Operations (SLO) because she was intrigued by the idea of working with wild animals.

Over the last eight years, P.J. has been involved in countless rescues. But two still stand out. One involved a stranded otter pup in Cambria that was trapped three feet in a small, twisty chasm above a cave. P.J. extracted the otter and brought him up the bluff for a medical evaluation. She loaded him into a carrier and brought him to a tide pool with the hope of a reunion with his mother. After a while, the pup recovered, made his way into the strong surf and started making some noise. An adult otter swam over and they touched noses. There were many cries and squeals as the reunion between mother and baby took place.

Her other favorite rescue was Arrow, a small sea lion with a crossbow arrow through its neck.

“I love the physical aspect of a rescue: the hands-on feeding and treatment,” says P.J. “We work late and hard, and get dirty. I also treasure the school presentations. There is nothing like seeing a third grader touching an otter pelt or harbor seal whiskers for the first time. They know so much more about the ocean than I did as a kid. It’s a welcome contrast to the heartbreak of human impact: we see animals hit by arrows or gunshots; cut and choked by packing straps, fishing lines and other debris. But seeing the children learn about the ocean gives me hope for a more environmentally conscious future.”

# OUR VOLUNTEERS

We thank our 900+ volunteers who donated 108,741 hours of their time during the calendar year 2009 to help rescue and care for marine mammals in need and to help the Center deliver educational outreach programming and administrative tasks.

## COMMITTED, DEDICATED, HARDWORKING, PASSIONATE

|                     |                     |                    |                    |                    |                     |                     |                    |                    |
|---------------------|---------------------|--------------------|--------------------|--------------------|---------------------|---------------------|--------------------|--------------------|
| Tina Abbate         | Jennifer Bell       | Matthew Brim       | Larry Clinton      | Kathleen           | Ashley Fell         | Christian Gilmer    | Harold Hauck       | Nicole Hvid        |
| Jeanne Acceturo     | Paulette Bellamy    | Richard Broadwell  | Sarah Codde        | Disney-Nilson      | Jennifer Ferber     | Federica Giorda     | Jan Haverty        | Maddalena          |
| Bill Ake            | Laura Bellinghausen | Tally Buckstaff    | Michael Coffman    | Joanne Domingoes   | Karla Fernandez     | Fred Glazier        | John Haverty       | Iannaccone         |
| Barbara Akle        | Elizabeth Benitez   | Tally Buckstaff    | Peter Cohen        | Joseph Domingoes   | Sandy Fernandez     | Margaret Glover     | Lynn Hawes         | Tomomi Imura       |
| Jeremy Alcantara    | Megan Beresford     | Verity Burgess     | Aaron Cohen        | Ann Domm           | Chris Fernandez     | Ilana Goldbarg      | Sue Hawley         | Sharron Jackman    |
| Jayne Allen         | Jeanette Bergstrom  | Judi Burle         | Gretchen Cole      | Lauren             | Roberta Ferraris    | Jason Goldheim      | Shannon Hay        | Lee Jackrel        |
| Diane Allen         | Jean Bernard        | Guy Burnett        | Bryan Coleman      | Donnelly-Crocker   | Richard Ferris      | Gregory Gonzalez    | Gregory Helfer     | Alison Jackson     |
| Victor Alm          | James Bernard       | Sylvia Burns       | Craig Comen        | Amber Dooley       | Taddy Fick          | Kristin Gordon      | Howard Hendler     | Teresa Jacques     |
| Richard Alman       | Holger Berndt       | Zofia Burr         | Megan Connolly     | Richard Dorflinger | Laura Figoski       | Julia Gorton        | Linda Hendler      | Jenni James        |
| Sabrina Alonso      | Rochelle Bernet     | Darci Burrell      | Michel Conrad      | Jeremy Dossetter   | Antonio Fillari     | Andrea Graessle     | Lawrence           | Karla James        |
| Tija Altergott      | Jill Berryman       | Julie Busch        | Barbara Cooper     | Andrea Dougall     | Jean-Philippe       | Jeffrey Gray        | Heppworth          | Miranda Janusch    |
| Henry Altorfer      | Anne Bertaud Peuto  | Victoria Buschman  | Kenneth Coren      | Michele Dove       | Fillattaz           | Stephen Gray        | Darci Hermann      | Cheryl Jarman      |
| Christine Anderson  | Stacy Bezyack       | Sandra Bush        | Patricia Cornell   | Carolina Dratva    | Morgan Filler       | Tiffany Gray        | Monica Hernandez   | Tommye Jaruis      |
| Maren Anderson      | Dana Bialashewski   | Stephanie Bush     | Mais Corush        | Monica DuClaud     | Holly Finefrock     | Hannah Green        | Olivia Herrera     | Patricia Jasper    |
| Eric Anderson       | Nathan Bickart      | Misty Cain         | Daniel Costello    | Jenny Duncan       | Patricia Finn       | Kendall Green       | Yutaka Hieda       | Patty Jasper       |
| Emily               | Barbara Billand     | James Cain         | Roy Coto           | Megan Duncan       | Amanda Finnicum     | Rebecca Greene      | Etsuko Hieda       | Sarah Jeffries     |
| Anderson-Merritt    | Robert Billand      | Suzanne Canja      | Mark Cotter        | Mary Dunn          | Jonathan Fischer    | Sandy Gregory       | Lesly Higgins      | Mark Jennings      |
| Emily Andrews       | Jana Black          | Abigail Cannon     | Kathy Cox          | Sherrill           | Hugh Fitzgerald     | Chris Gridley       | Ken Highfill       | Stan Jensen        |
| Gary Angelus        | Katherine Blackwell | Soncie Cantone     | Janis Crawford     | Dunning-Riley      | Beth Flake          | Allison Griffin     | Mary Hill          | Darren Jensen      |
| Laura Anglin        | Eric Blackwolf      | Kate Capela        | Stuart Crawford    | Jill Dunsing       | Monique Flores      | Jennifer Griffith   | Donald B. Hill     | Dana Jensen        |
| Marybeth Arago      | Erin Blackwood      | Annie Caporaso     | Rick Creelman      | Julie Durbin       | Jennifer Fogg       | Sarah Grimes        | Jacquie Hilterman  | Anne Jewett        |
| Helen Aragoni       | Katie Blair         | Brandie Cargill    | Zahlia Cronce-King | Patricia           | Pieter Folkens      | Horia Grosu         | Tai Hirabayashi    | Linn Johnson       |
| Cynthia Ariosta     | Kara Blankenship    | Leslie Culhane     | Leslie Culhane     | Duron-Okerblom     | Mitchell Fong       | A, Groves           | Ernest Hirose      | Steven Johnson     |
| Kathryn Arnold      | Patrick Blenderman  | Jeff Cullen        | Jeff Cullen        | Scott Eanes        | Alva Fong           | Bryan Grundy        | Karl Hittelman     | Janet Johnson      |
| Linda Ashworth      | Mary Blenderman     | Kristin Culp       | Kristin Culp       | Sally Eastham      | Susan Forster       | Eric Gsell          | Laura Hoberecht    | Amy Johnson        |
| Rachel Assink       | Elizabeth Bloom     | Linda Curtis       | Linda Curtis       | Victoria Edge      | Joyce Fox           | Sophie Guarasci     | Dan Hogan          | Patricia Jones     |
| Ron Atik            | Amanda Blume        | Tom Czabaraneck    | Tom Czabaraneck    | Stefan Edinburgh   | Melanie Fox         | Valerie Guarin      | Barbara Hogan      | Catherine Jones    |
| Alicia Atkins       | Natalya Blumenfeld  | Olivia da Silva    | Olivia da Silva    | Jamal Edwards      | Zandra Frame        | William Gulland     | Rietta Hohman      | Charlotte Jones    |
| Jay Auslander       | Karen Bobier        | Murray Dailey      | Murray Dailey      | Channing Egeberg   | Katya Frazier       | Catherine           | Patricia Hokanson  | Brian Jones        |
| Jennifer Austin     | Mihaela Boboc       | Gayleen Dallman    | Gayleen Dallman    | Joan Eich          | Carolyn Fremgen     | Gunther-Murphy      | Adria Holbeck      | Kristina Jones     |
| William Avellino    | Marilyn Boese       | Keith Dallman      | Keith Dallman      | Ronald Eich        | Deborah Gabris      | Sue Guthrie         | Kayla Holbeck      | Linda Jordan       |
| Rana Badir          | Steve Bohn          | Amy Dansker        | Amy Dansker        | Scott Elder        | Julie Gagnon        | Vanessa Gutierrez   | Patricia Holt      | Emily Joseph       |
| Jennifer Bahlman    | Cullen Bonaventure  | Christa Darr       | Christa Darr       | David Ellis        | Nate Gallagher      | James Gutman        | David Holt         | Doreen Judson      |
| Britt Bailey        | Marjorie Boor       | Justin Daulton     | Justin Daulton     | Christina Emmons   | Katherine Gallagher | Nancy Hagio         | Vernon Holyoke     | Mark Kahn          |
| Shirley Bailey      | Noelle Boring       | Susan Davis        | Susan Davis        | Forrest            | Krista Gallagher    | Doug Hailey         | Norma-Jean Holyoke | Kara Kammier       |
| Dianne Bakel        | Karen Bosko         | Nicole Davis       | Nicole Davis       | Emory-Gomez        | Shana Gallagher     | Erin Haley          | Caprice Hong       | Susan Kamprath     |
| Kimberly Baker      | Carroll Botvinick   | Jean de Grassi     | Jean de Grassi     | Barbara EnDean     | Carol Gamble        | Shannon Hall        | Marta Hotell       | Lia Kantor         |
| Marianna Baradellis | Emmanuel            | Amy De Reyes       | Amy De Reyes       | Zach English       | Casey Garcia        | Annie Hall          | John Houser        | Ajita Kardon       |
| Nashla Barakat      | Bouyssounouse       | Lucila De Roma     | Lucila De Roma     | Mark Enos          | Patty Garcia        | Todd Hancock        | Lent Howard        | Karen Kavanaugh    |
| Teri Jo Barber      | Lynda Bowers        | Marie De Stefanis  | Marie De Stefanis  | Alexandra Epple    | Jackie Gardner      | Joanne Handley      | Patricia Howe      | Marie              |
| Nancy Barth         | Jill Brackmann      | Celeste Dela       | Celeste Dela       | Russ Erlandson     | Ilona Garner        | Megan Hankins       | Janea Howell       | Kazan-Komarek      |
| Cindy Barton        | William Bradd       | Calzada            | Calzada            | Diana Espana       | Sita Geroux         | Jane Hansen         | Matthew Howell     | Alisa Keenan       |
| Maureen Bates       | Joann Bradley       | Julie DeMaestri    | Julie DeMaestri    | Corinne Eustice    | Jacqueline Gesner   | Douglas Hanson      | Lauren Hoxsie      | Kim Keesee         |
| Tom Bauer           | Jerry Braet         | Cristi Derenzi     | Cristi Derenzi     | David Evans        | Deborah Gettys      | Michael Harden      | Anne Hoyer         | Lauren Kell        |
| Dustin Baumbach     | Ellen Braithwaite   | Rebecca Detrich    | Rebecca Detrich    | Elisabeth Evans    | Sheila Giannini     | Bryan Hargo         | Ping-Shun Huang    | Ann Keller         |
| Charlotte Bear      | Ann Braunsteen      | Dennis DeVincentis | Dennis DeVincentis | Sandy Fagin        | Marianne Gibbons    | Christopher Harnack | Nick Huard         | Cathy Keller       |
| Barbara Beasley     | Marie Brayman       | Diane DeVincentis  | Diane DeVincentis  | Ness Fajarolo      | Jody Gibney         | Quinn Harrison      | Kristin Hubbard    | Darlene Kellogg    |
| Rachel Beck         | Katjusa Brejc       | Mirium Devlin      | Mirium Devlin      | Kyle Fallor        | Holly Gibson        | Meghan Hartwick     | Jennifer Hudgins   | Karen Kelly        |
| Kelly Beck          | Claudette           | Anjali Dhiman      | Anjali Dhiman      | Sue Farnham        | Sandy Gifford       | Rick Harvey         | Michele Hunnewell  | Sarah Kelly        |
| Donna Beckett       | Brero-Gow           | Hilary Clark       | Hilary Clark       | Brooke Farrand     | Maureen Gilbert     | Grace Harvey        | Jason Husby        | Tara Kelterer      |
| Stephanie Bahasa    | Allison Bricker     | Julia Clarke       | Julia Clarke       | Patricia Fata      | Daphne Gille        | Meredith Hasson     | Harriet Hutchinson | Katherine Kemerait |

|                        |                    |                     |                     |                     |                     |                    |                     |                     |
|------------------------|--------------------|---------------------|---------------------|---------------------|---------------------|--------------------|---------------------|---------------------|
| Mom Keo                | Janet Leonard      | Sunny McKee         | Aaron Oehrle-Steele | Michelle Ramatici   | Nicole Santino      | William Snell      | Rebecca Tay         | Jean Warren         |
| Michelle Kern          | Rebecca Leonardson | Jerry Mecabe        | Michael Ogrydziak   | Barbara Rambo       | Crystina Santos     | Nicholas Sohn      | Susan Taylor        | Pamela Warren       |
| Kathy Kern             | Sue Leong          | Thomas Medin        | Yushi Oguchi        | Gayathri Ramesh     | Mac Santos          | Kumiko Soichi      | Peter Taylor        | Karen Warren        |
| Matthew Kernan         | Natalie Levy       | Olivia Mendez-Alm   | Martha Oresman      | Anastasiya Randall  | Lindsey Sauer       | Tracey Sonneborn   | Elizabeth Taylor    | Phillip Warren      |
| Jon Kerr               | Sammarye Lewis     | Mick Menigoz        | Sylvester Orosco    | Esther Rasmussen    | Tom Savage          | Laura Sooy         | Andrew Taylor       | Patrick Warren      |
| Margrit Keyes          | Daniel Lewis       | Nancy Merchant      | Deanna Osborne      | Bonnie Rather       | Susan Sawade        | Rachel Sorensen    | Sarah Teague        | Shelley Watson      |
| Thomas Kieckhefer      | Gabrielle Lewis    | Michael Mercier     | Adam Ratner         | Adam Ratner         | Nancy Scarborough   | Keary Sorenson     | Roger Teetzel       | Rose Wayman-Kerr    |
| Tera Killip            | Linda Lewman       | Valerie Merrin      | Maggie Ostdahl      | Kelly Ravet         | Dana Scheumaker     | Sally Sorenson     | Bob Terrell         | Dianne Weatherford  |
| Terry Kilpatrick       | Rachel Litiatco    | Heather Messall     | Peter Ottersbach    | Robert Ravet        | Lori Schiffbauer    | Judy Sperling      | Cem Terzi           | P.J. Webb           |
| Mark Kimber            | Emily Livermore    | Megan Messick       | Ingrid Overgard     | Kerry Reason        | Alison Schlueter    | Sylvia Spiro       | Nicole Marie        | Marsha Weeden       |
| James Kimbrell         | Eglis Lode         | Leeza Metrovich     | Sue Pace            | Kathryn Reavis      | Liz Schmal          | Suzanne Spong      | Teutschel           | Lisa Weg            |
| Tiffanie Kimm          | Karen Lode         | Amy Miles           | Jennifer Padilla    | Matt Reese          | Marcia Schmelzer    | Cassandra Springer | Anil Tewari         | Anja Wehrmann       |
| Angela King            | Wendy Lopez        | Janet Miller        | June Padilla        | Laurie Reinsdorf    | Daniel Schmitz      | Jeffrey Sproul     | Alexandra Thell     | Joerg Weingarten    |
| Jessica Kirby          | Rachel Loud        | Carol Miller        | Ken Padilla         | Samantha Reiter     | Emily Schoenrock    | Mary Sproul        | Vicki Thomas        | Jennifer Weller     |
| Suzy Kisch             | Melanie Low        | Tiffany Miller      | Patricia Page       | Javier Rendon       | Ramella Scholl      | Nicole St Aubin    | Sandra Thomas       | Rachel Wells        |
| Joseph Kiss            | Brian Lucas        | Heather Misener     | Anne Pagent         | Kalin Reza          | Pamela Scholler     | Commodore St.      | Shannon Thomas      | Kelly Wentz         |
| Amanda Knepa           | Patrick Lukas      | Meagan Moffat       | Eric Painter        | Bonnie Ricca        | Kim Schreiner       | Germain            | Tamyra Thomas       | Ed Whitaker         |
| Kristy Kobayashi       | Francesca Luna     | Miguel Molina       | Sitara Palecanda    | June Richard        | Courtney Schreiner  | Arthur St. Germain | Kristine Thomure    | Amanda White        |
| Paul Koenig            | Tricia Lundrigan   | Vicky Molino        | Thomas Pape         | Heather Richard     | Caroline Schuab     | Aubrey St. Marie   | Mike Tift           | Shana White         |
| Adrienne Koepke        | Barbara Lutes      | Amir Momenzadeh     | Ashleigh Papp       | Kayleigh Richards   | Dean Schuler        | Kelsey St. Marie   | Janeil Tillmann     | Cindi Whitlock      |
| Lindsey Koerlin        | Peter Lynch        | Christina Montes    | Beth Pardieck       | Monica Richmond     | Dan Schwartz        | Carol Stack        | Katharine Tomalty   | Donna Why           |
| Lynette Kofinow        | Tim Lytsell        | Gabriella Montinola | Laurie Parish       | Jackie Rifkin       | Hope Schwartz       | Karen Stafford     | Susan Tompkins      | Christina Wilder    |
| Shanon Kohn            | Martin MacGregor   | Luis Moran          | Katharine Parker    | Jessica Riggin      | Craig Scott         | Monica Stampfl     | Craig Tooley        | Callie Wilder       |
| Jeffrey Kohn           | Joan MacTaggart    | Ronald Moreland     | Sarah-Jane Parker   | Claudia Rismiller   | Juniper Scribner    | Chris Starkweather | Roger Towson        | Britney Wilkinson   |
| Michael Konrad         | Jason Mags-Baldwin | Cathy Moreland      | Peggy Parks         | Justin Ritter       | Liz Seman           | Peter Stathakos    | Misuzu Toyoma       | Nancy Williams      |
| Kathryn Koontz         | EJ Maitz           | Sean Morgan         | Amy Parsley         | Sandy Rizzetto      | Ted Semplinger      | Anina Stauder      | Jacqueline Treiger  | Kristine Williams   |
| David Krale            | Daniela Maldini    | Diane Moroni        | Sandra Parsons      | Jeffrey Robinson    | Eric Sevim          | Michelle Steers    | Karen Treiger       | Evan Williams       |
| Heather Kramp          | Deanna Malhade     | Nikkita Patel       | Alison Rodrigues    | Alison Shaw         | Lincoln Shaw        | Jennifer Stein     | Brent Treiger       | Robert Wilson       |
| Ami Krasner            | Shawn Mallan       | Christina Morrow    | Claudia Pedersen    | Frederick Roeber    | Kathleen Sheehan    | Lauren Steindel    | Maria Trenary       | Carol Wilson        |
| Nori Kricensky         | George Mandala     | Virginia Mosney     | Eldene Pederson     | Patricia A. Romeiro | William Sheehy      | Robin Stempien     | Ashleigh Triplett   | Patricia Wilson     |
| Jane Kroesche          | Joan Mantecon      | Erin Moutinho       | John Pellandini     | Michelle Roppeau    | Danielle            | Amy Stenhouse      | Jane Tripp          | Kelli Wilson        |
| David Krucik           | Suzanne Manugian   | Edwina Mule         | Sue Pemberton       | GINNY RORBY         | Sheetenhelm         | Scott Stephens     | Susan Tripp         | Ryan Wilson         |
| Carla Kructer          | Laura Marcella     | Lesta Nadel         | Samuel Pena         | Angelica Rosa       | Susan Shepard       | Kaylah Sterlling   | Dawn Trujillo       | Maureen Wincor      |
| John Krug              | Robert Marquardt   | Ian Nadel           | Maureen Pero        | Amanda Rose         | Barry Sheppard      | Tom Stern          | Edward Tuescher     | Stave Wincor        |
| Cynthia Kruger         | John Marra         | Angie Nakano        | Christiane Perthen  | Karen Rosenstein    | Christine Shields   | Brenda Stevens     | Shauna Urratio      | Beth Wise           |
| Catherine Kruttschnitt | Teresa Marren      | Scott Nance         | Nicole Peterson     | Doug Ross           | Danielle Shimizu    | Carol Stewart      | Lisa Valentine      | Christina Wittmaach |
| Richard Kuehn          | Nicole Marrin      | Nicholas Nassikas   | Belinda             | Catherine Roth      | Laura Shipp Bennett | Kristen Stimpert   | Katherine Valentine | Jennifer Wong       |
| Jessica Kunz           | Jennifer Marsden   | Laura Navarrete     | Petrin-Burnett      | Allegra Roth        | Ramelle Sholl       | Chester Stirling   | Anje van der Naald  | Steve Wood          |
| Tara La Valley         | Cristina           | Donna Nayduch       | Matt Pheanis        | Kasey Rowe          | Doug Sides          | Jonathan Stock     | Sarah Van Ness      | Terri Woodhouse     |
| Joyce Ladwig           | Martinez-Canton    | David Neale         | Marlene Phillee     | Amy Rubenstein      | Terry Simmons       | Samantha Stone     | Donald van Siclen   | Julie Woodruff      |
| Steve Ladwig           | Alyssa Maskell     | Stephanie Nehasil   | Melanie Piazza      | Kat Rudd            | Lisa Simon          | Mike Stone         | Richard Vance       | Emily Woods         |
| Tammy Lam              | Calila Mason       | Rolayne Nelson      | Amanda Pierce       | Colleen Rudd        | Jane Sinclair       | Chris Stone        | Frits VanDerlinden  | Joan Woods          |
| Emily Lam              | Sara Mason-Silva   | Simone Neuss        | Bonnie Plakos       | Jamie Rudd          | Kanal Singl         | Anina Stouder      | Kate Vannelli       | Craig Woods         |
| Liz Landacre           | Natalie Mastick    | Chris Neustrup      | Paul Plakos         | Patricia Rudebusch  | Justin Sinner       | Shelbi Stoudt      | Damo Vasudevan      | Leif Wooley         |
| Dawn Landes            | Nicky Mastin       | Christine Nevins    | Leah Platoni        | Jane Rudebusch      | Sam Sklar           | Stephanie Stowell  | Martha Velez        | Courtney Wooley     |
| Iris Landsberg         | Madeleine May      | Kathy Newton        | Katherine Pofahl    | Kayla Ruggiero      | Maria Slagle        | Anne Straub        | Kimberly Verklerov  | Rebecca Wrench      |
| Daniel Larks           | Celeste McAdam     | Marina Nichols      | Chris Porchuska     | Giancarlo Rulli     | Shawn Slate         | Diane Straus       | Victoria Vermeer    | Taylor Wright       |
| Tyler                  | Amanda McArthur    | Dani Nicholson      | Cindy Potter        | Cynthia Runyon      | Meghan Sleeper      | Katherine Striano  | Don Vesey           | Brent Wright        |
| LaRoche-Degyansky      | Claire McCabe      | Glenn Nickerson     | Luke Potter         | Molly Russell       | Tanya Smart         | Betsy Stringer     | Kerry Vierra        | Lauren Wyss         |
| Hanne Larsen           | Jorie McCarthy     | Alex Nicoll         | Valerie Potvin      | Underwood           | Nadine Smith        | Katie Sugarman     | Maria Villarreal    | Kristine Yager      |
| Laura Larson           | Mary Ann McCleary  | Justine Nielsen     | Javier Preciado     | Mary Russi          | Yvette Smith        | Sierra Suits       | Timothy Vogel       | Natasha Yankoffski  |
| Joanne Lasnier         | Debbie McConathy   | Stephen Nilson      | Caree Prunty        | Rebecca Ryan        | Parsons Smith       | Maya Sullivan      | Vicki Vontz         | Kelly Yarborough    |
| Vicki Laughlin         | Lauryn McCreadie   | Jeanette Nishida    | Kelly Przybysz      | Dede Sabbag         | Harper Smith        | Mary Sundance      | Deborah Wagman      | Lillian Young       |
| Laura Lawn             | Fiona McCuaig      | Takuya Noda         | Michael Psinakis    | Ken Saejoa          | Gregory Smith       | Jennifer Sypeck    | Neil Walker         | Kristina Yu         |
| Sandy LeCompte         | Gabriel            | Alex Norton         | Jacob Pszonowsky    | Pam Sagan           | Raya Smith          | Joule Sze          | Andrew Walsh        | Zee Zaballos        |
| William Lee            | McDill-Zomarripa   | Eve Norton          | Carlos Quintero     | Pat Sagan           | Garrett Smith       | Arthur Taber       | Robert Wamstad      | Sammy Zahabi        |
| Nicole Lee             | Janet McElroy      | Nancy O'Brien       | Gus Raccambi        | Laraine Salmon      | Shayla Smith        | Christiana Tan     | Pamela Ward         | James Zurn          |
| Elizabeth Leite        | Alfred McElroy     | Joan O'Connell      | Theodore            | Mark Sanders        | Monique Smith-Lee   | Katy Tanis         | Debbie Ward         | Anne Zwagerman      |
| Sarah Lenz             | Jenny McGinnis     | Paul O'Connor       | Radamaker           | Nancy Sanders       | Donna Smits         | Angie Tate         | Sally Warke         | .....               |
| Jeanne Leonard         | Carol McGuire      | Julie O'Connor      | Marilyn Rajkovich   | Gina Sanfilippo     | Hans Smits          | Brian Taussig      | Bettina Warner      | .....               |



In 2009, The Marine Mammal Center received a number of generous contributions that increased its capacity to fulfill its mission. The Center would like to take this opportunity to highlight six generous donors whose gifts made a significant impact on its operations.



## DONOR HIGHLIGHTS



### Oracle Corporation

In 2009, the Center re-established its relationship with the Oracle Corporation in a significant way, beginning with a \$20,000 contribution from the Oracle Education Foundation to support the Center's Whale Bus program. In addition, Chad Carlson, Senior Director of Global Advertising at Oracle, joined the Center's board of directors in 2009.

Oracle was also one of the two title sponsors of the Center's Grand Opening celebrations in 2009, and, when the weather called for rain on the date of the Center's Ribbon Cutting event on June 5, 2009, Mr. Carlson was able, on extremely short notice, to convince the company to lend the Center its tents to cover its courtyard! In light of all of this generosity, the Center was proud to include Ms. Colleen Cassity, Executive Director of the Oracle Education Foundation, among the cutters of the ribbon during its grand opening festivities on June 5, 2009.

In addition to its general financial contributions, in 2009 Oracle sent four teams of over 120 of its employees to volunteer at the Center, and they worked alongside animal care crews and supported our annual coastal clean-up event. One Oracle employee, Ms. SJ Parker, even became a regular volunteer at the Center!

The Center is sincerely grateful to Oracle for all of its support and its commitment to our environment; we look forward to continuing this partnership for many years.

## Koret Foundation

The Koret Foundation made its first grant to the Center in 2006, in the amount of \$250,000, for the Center's capital campaign. When the Center needed to raise additional funds for Phase II of its capital campaign, the Koret Foundation responded with another grant of \$250,000. This additional grant was a 1:1 matching grant, and has enabled the Center to raise an additional \$210,000 toward Phase II.

The Center was honored to name its Courtyard in recognition of the generosity of the Koret Foundation, and to have Ms. Susan Koret, President of the Foundation, among the cutters of the ribbon during its grand opening celebration on June 5, 2009.

The Marine Mammal Center is grateful for the generosity of the Koret Foundation to its new facility, and is proud to be included in its efforts to strengthen the Bay Area.

## Estate of Deane Oberste-Lehn

Ms. Deane Oberste-Lehn, who earned an MS and a PHD from Stanford, passed away at the age of 75 in 2009. While she had not been a long-term or a major donor, Ms. Oberste-Lehn left the remainder of her estate to The Marine Mammal Center. She earned a bachelor's degree in geology from UCLA and worked for the Rand Corporation before attending Stanford. After completing her PhD, she was a consulting geological engineer and worked for R&D Associates in Marina Del Rey, California. After retirement, she participated in organizations dedicated to the protection of marine mammals and horses.

The Center is grateful that Ms. Oberste-Lehn selected it as a place to honor her commitment to animal welfare and the environment, in perpetuity.

To learn more about corporate sponsorship, click here: [www.marinemammalcenter.org/what-you-can-do/corporate-partners-and-community-sponsors/corporate-levels-benefits.html](http://www.marinemammalcenter.org/what-you-can-do/corporate-partners-and-community-sponsors/corporate-levels-benefits.html)

## Ellie Gustafson and Stewart Goossens

Through the years, the Center has received wonderful contributions from young philanthropists, and in 2009 two young people went above and beyond the call in their efforts to support the Center.



First Ms. Ellie Gustafson of Maryland heard about our "Dollar-a-Pound" campaign and began holding bake sales in her neighborhood to raise money to buy fish for our patients. When she learned that the top fundraiser would receive a behind-the-scenes tour of the Center, she raised even more money through more bake sales and through an online fundraising page. The Center's staff was so delighted by her accomplishment, they invited Ellie and her mom Kathy as special guests for the Ribbon Cutting event on June 5 (and Ellie even helped cut the ribbon – see photo on page 14). Ellie raised over \$800 – and that bought over 800 pounds of fish for the Center's patients!

Midway through the Dollar-a-Pound campaign, San Francisco high school student Stewart Goossens informed the Center that he planned to swim the Strait of Gibraltar and that he would like to use his swim to raise money to help feed our seals. Thus, Stewart began a "Swim for the Seals" campaign, and he raised \$20,000!

Stewart was also a special guest at our 2009 Gala, and he was the youngest American to ever complete the swim through the Strait of Gibraltar.

Ellie and Stewart were incredible inspirations. The Center salutes them and their parents, for their warm spirits and caring hearts.



## Margaret A. Cargill Foundation

The late Margaret A. Cargill was a prominent philanthropist, and the environment was among her strongest passions. After she passed away in 2006, a charitable foundation was established to carry on the legacy of her philanthropic work, and The Marine Mammal Center was one of a small number of organizations that was invited to apply for a grant from the foundation.

Ms. Cargill owned one of the largest holdings of Cargill, Inc., the largest privately held company in the United States (if it were a public company, it would rank among the top 10 companies on the Fortune 500 list).

In May 2009, the Center received the good news that it had been awarded a grant of \$50,000, to be paid over five years and to support its animal care work, as well as occasional dividends of securities. In 2009, the Center received a total of \$12,737 from the foundation that consisted of the first \$10,000 grant payment and another \$2,737 in dividends.

The Center is truly grateful to be included among the organizations that are carrying on the legacy of Ms. Cargill.

# OUR DONORS

The Marine Mammal Center thanks and proudly recognizes the support of donors to its annual campaign during the 2009 calendar year. These gifts to the Center's annual fund sustain its ongoing work in animal care, scientific research and marine science education.

## CHAIRMAN'S CIRCLE

\$50,000+

Anonymous  
Pat Callahan  
Elena and Arthur Court  
Sheila Head  
Catherine Kruttschnitt  
Eric Roberts  
Faye & Sandor Straus

\$10,000 - \$49,999

Anonymous  
Mary Bachman and  
William Downing  
Jeanne Bobbitt  
Lois Enslow  
Florence and Steven  
Goldby  
Stewart Goossens  
Darcy and William Gulland  
Virginia and Glenn Haldan  
Betty and William Hasler  
Beth Inadomi and  
Tim Newell  
A.E. & Martha  
Michelbacher Fund  
Michael Kleeman  
Ambassador and Mrs.  
Arthur C. Latno, Jr.  
Rachael and Marshall  
Levine  
Cinnie and Merrill  
Magowan  
Glen Mathison and  
Zoel Fages  
Sunny and Mark McKee  
Eileen Nelson  
Gina and Stuart Peterson  
Julie and Martin Richards  
Beverly Spector and  
Kenneth Lipson  
Janecke and Peter Stauffer  
Roger Strauch  
Carole Strauss  
Jean and Phil Warren  
Jeanne and Harold  
Williams

## PROTECTED RESOURCES CIRCLE

\$5,000 - \$9,999

Anonymous  
Dr. Anurag Acharya and  
Dr. Madhuri  
Chattopadhyay  
Mary Jane and William  
Brinton  
Kathy Estes-Morgan and  
Rod Morgan  
Susan Grau  
Mrs. George F. Jewett, Jr.  
Derry and Charlene  
Kabcenell  
Jeanie and Murray Kilgour  
Kathryn Reavis and David  
Strohm  
Carol and John Simon  
Melissa and Thomas  
Thornhill  
Craig Veconi  
Nancy and Gregory Wilson

\$2,500 - \$4,999

Peter and Patricia Arrigoni  
Barbara and David Beasley  
Jeff Boehm and Keith  
Rosenthal  
Marjorie Boor  
Chad Carlson and Ed  
Westerman  
Kristin Culp  
Susan and Wendell  
Dinwiddie  
Marion Euphrat  
Linda Gibboney  
Val and Jerry Gibbons  
Mary and Clinton Gilliland  
Coco Hall  
Ingrid Hills  
Stan Jensen  
Arthur H. Kern  
Mara Kerr and Mark DiOrio  
Kathryn Edward and  
Kermit Kubitz  
Melvyn Mark  
Elizabeth Massie  
Nancy and Mark Maymar

Bonnie and Joseph Phair  
Gina Sanfilippo and  
Frederick Roeber  
Kathy and David Scially  
Richard W. See  
Lincoln Shaw  
Pat and David Spagat  
Shirley Spencer  
J. Holley Taylor  
Elizabeth Thieriot  
Bettina Warner  
Karen and Stan Watt  
Kay Yun and Andre  
Neumann-Loreck

\$1,000 - \$2,499

Anonymous  
Lisa Albani  
Beverly Allison  
Douglas Andelin  
Drue and Jerome Ashford  
Darla and Richard Bastoni  
Catherine Becker  
Sharon A. Beckman and  
Gregory N. Brand  
Rita and Stanley Bell  
Mildred and Paul Berg  
Maria Berry  
Stacy Bezyack and Dana  
Bialashewski  
Scott Brady  
Donald Brennick  
Cal Poly San Luis Obispo  
Psychology Class  
Laura and James Cafferty  
Paula and Jim Callaway  
Joy and Dennis Casciato  
Shirley and Jeff Causey  
Sandra and Allen Chaikin  
Laura and Alan Charles  
Helen and Felix  
Charpentier  
Kimberly Christensen and  
David Sielaff  
Julia Clarke  
Shirley Llanos-Clayton and  
Scott G. Clayton  
John Philip Coghlan and  
Tina Vindum  
Rebecca and John Colligan  
Rebecca and David Conant  
Laura and Michel Conrad

Martin F. N. Cooper  
Barbara and John Crary  
Grace Davis  
Lynn and Bruce Dayton  
Charles De Guigne  
Sandra Brod and Dennis  
DeDomenico  
Ann Domm  
Diane and James Ducey  
Jennifer and Tom Eccles  
David Edelson  
Steve Edwards  
Donald Ellis  
Dixon Farley  
Waltraud Finch  
Denise and Mitchell Fong  
Margot Fraser  
Lisa and William Gala  
Marilyn and Bob Garibaldi  
Ericka Gettman  
Sheila Giannini  
Marcia and John Goldman  
Suzanne Golt  
Kris and Peter Gordon  
Susan Gray  
Patricia Greenhood  
Carol Greenspan  
Pamella and C. Stephen  
Gronemeyer  
Karen Gupta  
Bernice Hansen  
Phyllis Hanson  
Anne Herbst and Peter  
Munks  
Sally Holt  
Christine and Gary  
Hromadko  
Grace A. Hughes  
William Hunter  
Christine and Robert Hunter  
Becky Wong-Insley and  
Mark Insley  
Thomaseen and James  
Jensen  
Chandra Jessee and Julius  
Gaudio  
Eric Joe  
Karen Johnson-McKewan  
and Tom McKewan  
Buck Kamphausen  
Janey and Kevin Kaster  
Judy Heymann Kazan &  
Steven Kazan

Arlene and Frank Keesling  
Julie Kelsey  
Dawn Kinney  
Douglas Kinney  
Meghen and Ken Kurtzig  
Dr. Roger Lang and Mrs.  
Sue Lang  
Karen Larsen  
Catherine and Collin Lau  
Leona Lauder  
O. William Leidel  
Sandy Lerner  
Arabella and Robert  
Levorsen  
Leslie Limberg  
Marie and Barry Lipman  
Janet B. Lockard  
Diane and David Logan  
Judy Logsdon  
Betty White Ludden  
Liz and Mel Lyman  
Michele and Douglas  
Magowan  
Barbara and Fillmore  
Marks  
Mary Maurer  
Margaret Maw  
Joanne and Paul Maxwell  
Jennifer McComb  
Carlyne and Alex  
McDonnell  
JB and Susan McIntosh  
John McQuown  
Mara Melandry  
Nancy Merchant  
Elsa Mikkelsen  
Karla and Gary Miller  
Nico Mizrahi  
Donna Mollenhauer  
Tashia and John Morgridge  
Chuck and Glee Murphy  
Irene Myers  
Nancy and Matthew Noel  
Carol Norr  
Mary O'Brien  
Olivia Orr  
Elizabeth Orser-Cataldi  
and Richard Orser  
Paul Padou  
Kathleen and Joseph  
Patterson  
Marian and Al Pawlick  
Arlene Peacock

Jane and Richard Peattie  
Ann Petersen  
Regina Phelps  
Eleanore Plessas  
Marilyn Rajokovich  
Richard Ramagosa and  
Edson Hutchinson  
Barbara Rambo  
Victoria and Sam Reed  
Douglas Rigg  
Sarah and Jeff Robinson  
Pamela Roby  
Lorelei Rockwell and Wayne  
T. Kennedy  
John Sainsbury  
Peter Benson and Thomas  
Savignano  
Charles Seim  
Anne and Edwin Seipp  
Susan Shapiro  
Charlene and Bob Shaw  
Susan and Greg Sickal  
Jill and Richard Sideman  
Beth and Russell Siegelman  
Stephen Simpkin  
Jennifer Spinach  
R. Peter Sullivan, III  
Beth and Kevin Sullivan  
Julia Sze  
Akiko Takahashi  
Teru Taketa  
Beverly Tanner  
Margaretta Taylor  
Patricia and Scott Teaford  
Jean S. Thomas  
Terri Tienken  
Barbara and Donald  
Tornberg  
Thomas Traber  
Karen Trione  
Valerie and Tim Tucker  
Pauline and Tom Tusher  
Kathy Tyson  
Kate and Richard Vance  
Kathryn and Robert Vizas  
Jennifer and John Vogel  
Lisa and Mark Wan  
Patricia Zuch and William  
Werner  
Patricia and Brian Wilson  
Robert Wilson  
Truth Wirthman and  
Britt Doyle

Lawrence Wood  
Natasha Yankoffski  
Margaret and Martin  
Zankel  
Brian Zeiler

\$500 - \$999

Anonymous  
Lawrence Adams  
Kirsti Aho  
Howard B. Allen  
Janet Allen  
John and Linda Alspaugh  
Scott H. Anderson  
Warren Anderson  
Constance Andronico  
Michael Anthenien  
Naomi and Bruce Appleton  
John and Janis Appleton  
Victoria and Donald  
Archibald  
Jane and Douglas Ashe  
Shelly and Rocky  
Barbanica  
Douglas Barnes  
Juliana Barr  
Paul Bartlett and Yumi  
Nakagawa  
Hugh Barton  
Cathleen and Lee Battles  
Jeannette and Frank  
Baumgardner  
Timothy Bause and  
Martin Checov  
Lorraine Bazan and  
Chris Stover  
Kate Beardsley  
Jim Beckstead  
Barb Berman  
Katherine H. Black  
Marilyn and Robert Borg  
Susan and Anthony Boster  
Walker Bostock  
Samuel Bozzette  
Robert C. Braddock  
Jerry Braet  
Mrs. Walter F. Brissenden  
Steven Brook  
Marilee Brooks  
Lynne and George Brown  
Laurel I. Burke  
Christopher Burner

Kelli and G. Steven Burrill  
Helen and Dave Burton  
Elisa Camahort  
Deborah Carlton  
Carondelet High School  
Ecology Club  
Chris and Karen Carpenter  
Winifred Case  
Diane and Richard Cassam  
Debra Caswell and Tim  
Goeken  
Gordon Chamberlain  
William Chan  
Tracy Harcourt and Ed  
Chejlava  
Kelly Chessen  
Scott Clawson and  
Maggie Lim  
Margaret Lopata and  
Don Cleveland  
William and Jean Coblentz  
Laura Cogan  
Susan Colborn and Mike  
Shanahan  
Ken and Michelle Copen  
Kathleen Correia and  
Stephen Evans  
Sean Crawford  
Janis and Michael  
Crawford  
Ingrid Woods and Steven  
Cummings  
Sue and Daniel Curran  
Linda and Tim Curtis  
Virginia Czarnecki  
John and Jennifer D'Aversa  
Christina Davignon  
Shirley Dawson  
Sue Dekalb  
Sharon and Kirch  
DeMartini  
Helen D. Demes  
Elizabeth and Paul Denison  
Diane Diggins  
Dr. Barbara Dittmann  
Connie and Mike Dowler  
Glenna Dowling  
Margaret L. Doyle  
Virginia Doyle  
Michelle Driscoll  
Jana Dunn  
Susie Ellis  
Patricia Elvebak  
Christina Fairbanks  
Rosemary Fei and Gary  
Harrington  
Barbara Fenichel  
Richard Ferris  
Charles Ferris  
James M. Finberg  
Jennifer and David Fisher

Myrna and Henry Fourcade  
Michael and Karen Foust  
Nancy Frakes  
Jennifer Franecke  
Sandra Franecke  
Michelle and Robert Friend  
Justine Frischmann  
Teri Fruchtman  
Denise Garner  
Lisa Gee  
Mrs. William D. Geiger, Jr.  
Jody Gibney  
Danielle and Mike Gilmore  
Tullio and Valerie Giudici  
Myles Goldfein  
Nydia Goode  
Kimball Gottschall  
Anthony and Caroline Grant  
Kimberly Griffin  
Dean A. Grubb  
Ellen Gurian  
Ellie Gustafson  
Laure and John Hansen  
Mike and Shauna Harden  
Karen and Rick Hargrove  
Andree Hest  
Lesly Higgins and Joseph  
Bunker  
Susan Hoeschler  
Sandra and Howard Hoffman  
Janet and Michael Hogan  
Steven and Laurie  
Holmstrom  
Khara Horning  
Julie and Gregg Hosfeldt  
Ping-Shun Huang  
Judith A. Hunt  
Susan and Ernest Ironside  
Carolyn and Donald  
Jackson, Jr.  
Christine M. Jacques  
Anne and Edward Jamieson  
Diane Jaramillo  
Wini and Lee Jebian  
Anna Jeffrey  
Michael and Bettina Jetter  
Robin and Robert Johansen  
Charlotte Jones  
William Josephs  
Doreen Judson  
Linda and William Kane, Jr.  
Anita and Mark Karier  
Carlyn Clement and  
Christopher Kaufman  
Consuelo Kellogg  
Todd Kelting  
Cynthia Kendall  
Kay Kennedy  
Barbara Kerr  
Joel R. Kessler  
Gaynel O'Neil Kew, E.A.

Sharon and Jeffrey Kidder  
Margaret E. Kiley  
Lenore and Louis Kirvay  
Violet Hardies Klaseen  
Nancy Kling  
Michael Kollins  
Sonoko Konishi and Ewan  
Johnson  
Krystal and John Konrad  
Christine Koski  
Cheryl and Grady Kromer  
Jean and S. Jack Kronfield  
Amy Lange  
Joanne L. Lasnier  
Benjamin Last and Julia  
Buck  
Catherine Latham  
Craig Latker and Rich  
Denatale  
Carla and James Laverty  
Marta Lawrence  
Cynthia Lee  
Sandra Legan  
James Lemon  
Peter Len  
Hollis Lenderking  
Ethel and Allan Lerche  
Cheryl and Kevin Leslie  
Dick Levine  
Pamela C. Lillquist  
Irene and William Lincks  
Paul Lindstrom  
Richard and Laurie Ling  
Sharon Liu  
Vicki Lohr  
Gale and Jon Love  
Diane Luders  
Bonita Macvaugh-Howe  
Elizabeth and Arsen  
Manugian  
Roberta Marchand  
Carole Mason  
Alan C. Mathewson  
Teresa L. Mc Daniel  
Maureen McClain  
Mary Ann McCleary  
Martha McClellan  
Lawrence and Jamie  
McCullough  
James McCurdy  
Edana McKenzie  
Victoria Mercer  
Frank Miller  
Pamela Miller and Janeil  
Engelstad  
John V. Moore  
Sean Morley  
Kathy Mulvany  
Lynda K. Munemitsu  
Lynne Murrell  
Irene Muschel

Susan and Paul Nagata  
Yukiko and Robert Nakano  
Brian and Shafia Neece  
Kathy Newton  
Jennifer Ng  
Marina Nichols and Jesse  
Fielding  
Larry Nichols  
Margery and Iain Nicolson  
Ellen Niemitalo  
Melinda Nykamp and Pam  
Whitehead  
Nancy E. O'Brien  
Michael and Simona  
O'Hare  
Elizabeth B. Fannon and  
William F. O'Leary  
Dr. Carol A. O'Neil  
Dorothy E. Orolin  
Mr. and Mrs. Lloyd R. Paff  
Karen Page  
Pat and Mauricio Pages  
Barbara Parkening  
Kirsten and David Parker  
Virginia Patterson  
Eileen and Phillips Perkins  
Nancy Pettengill  
Rudy and Patricia Phillips  
Mark Pritzen  
Benjamin and Kristen  
Quick  
Katherine and Phil Reilly  
David Reynolds  
and Colleen  
Buckley-Reynolds  
Karen and Guy Reynolds  
June Richard  
Tanya D. Richardson  
Christopher Ridley  
Justin Ritter  
Dr. Jacqueline L. Robertson  
Christina B. Robinson  
Ina Robinson  
Gregory Robinson  
Heather Rock  
Debra Rose  
Gaile Russ  
Allen and Heidi Russ  
Pam and Bill Sagan  
Bob Sage  
Tina and David Saling  
Susan Sawade  
Christina Scarlott  
Michael Scharfenstein  
Katharina Scharruhn  
Marcia and Nathaniel  
Schmelzer  
Judith Schultz  
Christine Scott  
Mary Severson  
Leah Shadowens

William Shewry  
Christine Shields  
Kari L. Shields  
Veronique Laband Siggins  
and Peter Siggins  
Randolph Silva  
Karen and John Silvey  
Gregory Simon  
Julie Simons  
Gayle and Lloyd Smalley  
Kristine Smith  
Yvette Smith  
Fran and Robert Smith  
Robert Smith and Cydney  
Weiland  
Veronica Soto  
Dianne and Bruce  
Spaulding  
David and Donna Spilman  
Craig and Jane Spriggs  
Kathleen Stack  
Mae Stadler  
Carolyn Stark  
Henry Stauffer  
Laurence Stearns  
Marc Steinberg and  
Maria Day  
Frances Stevenson  
Amy Stone and Chris Stone  
Karen L. Strand  
Jane and Duane Stratton  
Susan Swartz  
John Taylor  
Mr. and Ms. Roy E. Teo, Jr.  
Marissa and Daniel Timm  
Ginger and John Tolonen  
Mary Tonon  
Misuzu Toyama  
Stephanie Travis  
Marla and Gregory Turek  
Julie Turner  
Bruce and Grace Valentine  
Don and Dianne van Siclen  
Mary Ann Vasconcellos  
James Vestal  
Gary L. Viale and Pamela  
Hallquist Viale  
Deborah and Bruce  
Wagman  
Anne-Marie and David  
Walker  
Bob and Karen Wamstad  
Angeli Wang and John  
Green  
Lee and Bill Webber  
Elaine Weihman  
Robert Weisblatt  
Joseph Wender  
Karen and Steven  
Werner-Petak  
Jill Wernicke and Sani  
El-Fishawy

Karen and Kenneth West  
Yvette Widdicombe  
Charlotte and Ron  
Willenborg  
Jeanne Williams  
Diane B. Wilsey  
Kathryn Winter  
Janne and William Wissel  
Islon Woolf and Eva  
Melnikova  
Jeri L. Young and  
Derrick Jensen  
Lisa Young and Karl Cox

## STELLER CIRCLE

Steller Circle members  
have included the Center  
in their estate plans.

Anonymous  
Dale Alison Anania  
Helga Ashkenaze  
Mary Bachman and  
William Downing  
Diane Baldwin  
Doreen Baleria  
Juliana Barr  
Sheri and Robert Bell  
Cynthia Benner  
Florie and Joseph Berger  
Jeanne Bobbitt  
Lois L. Brewer  
Vi Brown  
Waltraud and Michael  
Buckland  
Richard and Christy Burke  
Lou Ella Burmeister  
Susan Burns  
Barbara Busch  
A. Camille Buschman  
Susan Camusi  
Mariateresa Canosa  
Robert Caradien  
Joan Christenberry  
Charles Condy  
Gale Connolly  
Shelly Crain  
Sharon Culp  
Grace Davis  
John De Crell  
Lee Desta  
Elizabeth O. Dohrmann  
George and Laura Dora  
Margaret Downing  
Lyn Carol Dunn  
Constance Edwards  
Veronica Espada  
Frances Ezer  
Margaret Louise Falk  
Judy Feil

Deborah Gabris  
Carol Gamble  
Andrew Geiser  
Liana Genovesi and  
Scott Ahrendt  
Derlin German  
Arlette and Nick Gerson  
Loretta M. Giorgi  
Lawrence Goldwyn  
Barbara Goldwin  
Gitta Grabowski  
Jean Grandfield  
Susan Gray  
Lynn Griffin  
Harry Haines  
Hildegard H. Harris  
George Harter  
Jacqueline and Eugene  
Haunch  
Virginia Hawley  
Therese Holland  
Sally Holt  
Mary Huzar  
Jamie Jaffee  
Mary and Robert Jenkin  
Stan Jensen  
Anna-Kajs Johnson  
Mary Jope  
Pauline Kayes  
Lloyd Kendall  
Hilda and Ernest Kollmann  
Antoinette and Stephen  
Krajcar  
Ilona Kratz  
Ann Kugel  
Carmen M. Lasar  
Catherine and Collin Lau  
Sandra Legan  
Douglas Levison  
Ruth Levitan  
Charles Lindner  
Teri Loveland  
Jeanne Lucenti  
Carma Luskin  
Andre Malouf  
Greg Martin  
Jorie McCarthy  
Celeste McConnach  
Loraine Meyer  
Agnes M. Miller  
Patricia Minnick  
Max Money  
Sharon Neiman  
Gloria Nelson  
Joyce and Mohsen Noori  
Margaret Downing  
Priscilla Palomino  
Jeanne Pauley  
Rita Peters  
Jayne Phelps  
Donald E. Pringle  
Kevin Rabe

Marilyn Rajokovich  
Robert Rawlings  
Bonnie and Laurence Rhodes  
Steven Russ  
Ruth Schlossberg  
James Schollard  
Susan Shapiro  
Linda and Joe Stockhus  
Eric Strand  
Patricia and Scott Teaford  
Deborah Tencza  
Barbara and Donald Tornberg  
Kate and Richard Vance  
Jackson Vandebross  
Linda Vetter  
Shirley and Herman Victor  
Bobbie Wallace  
Lee and Bill Webber  
Donald West  
Jan Widdowson  
Stephanie and Kim Wigton  
Jane Williamson  
Robert Wilson  
Barbara Woodhill

## TRIBUTE GIFTS

We gratefully recognize special gifts received in honor of these family members and friends:

Dylan Adams  
Diane Allen  
Shelley Anixter  
Linda Ashworth  
Christa Barker-Myers and Family  
Madison "Fancy" Barlesi  
Tracie N. Barnes  
Mary Barr  
Ayden Beal  
Barbara Beasley  
Samantha and Madeline Beaton  
Carin Berolzheimer  
Laila Blavatnik  
Sanda Blockey  
Jeff Boehm  
Katjusa Brejc  
Stephen Brosseau  
Brendan Budge  
Laura and John Burke  
Pat Callahan  
Suzanne Campbell and Family  
Chuck Carleton and Sandra Quigley  
Anita Cavell

Fran Charlson  
Elaine Chen-Ramirez  
Mae Chesney  
Frankie & Mary Clare Chestnut  
Vicki Childress  
Joseph Cozza  
Hillary Curtis and Brian Fenske  
Mike and Theresa Daniele  
Mary DeLong  
Daniel A. Deniz  
Virginie Dorn  
Joel Dunlap  
Susan Eich  
Jennifer Franecke  
Ellen Freytag  
Howie Fry  
Shirley Furuichi and Charles Griffin  
Sheila Gardener  
Chase and Jack Geffert  
Florence and Steven Goldby  
Heather Gray  
Ellie Gustafson  
Mike Hagemann  
Aja Harvey  
William and Martha Hathorn and Family  
Hillary Herning  
Dan Houk and Family  
Denise and Jeff Jenkins  
Stan Jensen  
Isabella Johnson  
Linda S. Johnson  
Karen Johnson-McKewan  
Charlotte Jones  
Amelia Juneau  
Libusha Kelly and Mark Breidenbach  
Cynthia Kendall  
Brigid Kowal  
Linda P. Krause  
Elise Kroeber  
Kyle Krstich  
Cathy Kruttschnitt  
Celeste Langille  
Katie LaValley  
Joey LaValley  
Liz Ledger  
Baxter Lee  
Tory Leggett  
Kathy LeGrand  
Barbara Levin  
Rachael and Marshall Levine  
Merrill Magowan  
Shawn Mallan  
Shawn Mallan  
Tony Marcus  
Lorraine McCreery  
Sunny and Mark McKee

Bi & Jo Minton  
Catherine Moellering  
Dave Moody  
Irene Moran  
James Morgan  
Deanna Morrell and Chris Starkweather  
Tara Mueller  
Amit Mukherjee and Wonjoo Lee  
Marina Nichols  
Luke Osborn  
Jim Oswald  
Audrey Palmer  
Virginia Palmer  
Harry and Margaret Parducci  
Julia and Amy Parr  
Darius Pool  
John Popplewell  
George and Chris Pruitt  
Lee Purcell  
Natasha Reckless  
Julie Risenhoover  
Shelby Robinett  
Jay Rossiter  
Linda Sangunetti  
Jennifer Schmidgall  
Heather Schrader  
John Simon  
Holly Slater  
William Snider  
Paul and Joy Soulier  
Walter Stanke  
Sheree and Dale Stern  
Faye and Sandor Straus  
Barbara Sutti  
Teru Taketa  
Vicki L. Thomas  
Misuzu Toyama  
Donald van Siclen  
Eleanor Vinsant  
Katherine C. Walker  
Pamela Warren  
Will Wernicke  
Angele Williams  
Robert J. Wilson  
Diesel and Ethyl  
Ryan and Shannon

We respectfully recognize special gifts received in memory of these family members and friends:

Gary Allums  
Barbara Atkin  
Edward Bialashewski  
Ronald Brenner  
Randall "Buzz" Carlsen

Lori Clark  
Remo William Coon  
Benjamin Cornet  
Lillian Fong  
Eve and Paul Fout  
Elizabeth Gebhart  
Katie Gettman  
Anne Goulette  
Fritz Grau  
Charlie Hill  
Judith Hilterman  
Genevieve Hirsch  
Luke Osborn  
Jessica Holmes  
Gilbert Kane  
Adelaide Kirkbride  
Susan Knight  
Gerard LeBeau  
Angie Lee-Ow  
Bernard Lewis  
Lily & Leon Lifshutz  
Lorraine McCreery  
Daniel Mezzacapo  
Nancy Mobley  
Leigh Norling  
Don Ontiveros  
Theresa Pirie  
Rocci Pisano  
Gary Rausina  
Leanne B. Roberts  
Patricia Simpkin  
Joan St. Denny  
Holly Slater  
Mary Jane Shodall  
Susan W. Stauffer  
Lillian Straus  
Joan Trainer  
Mike Uliński  
Adrian Vrijenhoek  
Capt George H. Whitaker  
Radha Wood  
Cali  
Carson  
Moody  
Mustaine  
Scody  
Virgo  
Zoe

## IN KIND GIFTS

Adomo/Avaya  
Anthem Worldwide  
Annette Bialson  
Michelle and Keith Blascow  
Bodega Bay Sailing Adventures  
Sheldon Cohen  
Bryan Coleman  
Patricia A. Cornell  
Country Club Bowl  
Elena and Arthur Court

Linda and Tim Curtis  
Double Forte  
David Douglass  
Deborah R. Gabris  
Guide Dogs for the Blind  
Harbor Dive & Kayak Center  
Heitz Cellars  
Hewlett Packard Company  
Valerie Hicks  
Lee and Rebecca Jackrel  
Fran Kassberg  
Michael J. Kleeman  
Irene Lee  
Gabrielle S. Moeller  
George O'Connell  
Orrick, Herrington & Sutcliffe LLP  
Pioneer Equine Veterinary Service, Inc  
Rafael Floors  
Real Restaurants  
Katherine and Phil Reilly  
Regina Rohe  
Ken Rudin  
Sapient  
SF Bay Whale Watching  
David Sherwood  
Gary Smith  
St. Supéry Vineyards & Winery  
SWIRL  
Two Neat  
The Wall Street Journal  
West Marine Products Inc.

## BEQUESTS

Estate of Charlotte A. Allen  
Estate of Jeffrey Anthony  
John J. and Joanna M. Bardet Family Trust  
Ruth E. Benzing Revocable Trust  
Marion Doremus Bowler Trust  
James C. Cummings Charitable Remainder Trust  
Estate of Thomas A. Griffin  
Helen M. Haki  
The Gale Henning Trust  
Barbara L. Johnson Trust  
Estate of Mildred Lillis  
Estate of Alice Armstrong Lomas  
Estate of Barbara J Mapp  
Mikkelsen Marital Trust  
Estate of Iris G. Mumford  
Estate of Spaulding A. Norris

Estate of Deane Oberste-Lehn  
Estate of Svend Petersen  
Estate of George A. Pomeroy  
Estate of Patricia Pratt  
Richard H. Roupe  
Irrevocable Trust  
Selck Family Trust (John and Jane Selck)  
Agnes Whitelock Trust  
Richard F. Winkel  
Irrevocable Trust

## KELLAN CIRCLE

**\$250 - \$499**

Anonymous  
Susan Adamson  
Mark Altwater  
Chris Andrian  
Eileen M. Arbues  
Jennifer Armstrong  
Ann Griffith Ash  
Laurie Ashley  
Marilyn Aspesi  
Joyce Atherton  
Steven and Kathleen Atnip  
Maynard Baake  
Alice Baines  
Darlene Balducci  
Robert R. Baltzer  
Shelly and Rocky Barbanica  
Julie Barney  
Alison Barr Zyla  
Susan and Sean Barrett  
Gregory W. Bartha  
Lisa Bartlett  
Annette Bator  
Ann and Peter Bauer  
Janet Beatty  
Jeanne Beauchel-Bodiford  
Elizabeth Becker Warne and Edward Becker  
Douglas Beckmann  
Marcia and Michael Belford  
Gary Bell  
Sheri and Robert Bell  
Joan Benjamin  
JoAnn Bennett  
Steve W. Benninga and B. J. Edwards  
Beverly Benson  
Joanne Bergen  
Cornellia Bergmann  
Lorine Bezyack  
Jean M. Biancalana  
Cliff Bickford

Sheila Bigelow  
Mandi Billinge  
Michael Saroyan and Barbara Bishop  
Bob and Sissy Blanchard  
Tara Blasco  
Aleta and Daniel Bloch  
Peter and Isabel Blumberg  
Alan M. Blumkin  
Mr. and Mrs. H.C. Bond  
George and Susan Bono  
Donna and John Borden  
Margaret Bowers  
Joel and Rowena Boylan  
Norman Brand and Nancy E. Spero  
Ruth H. Brandt  
Rena and David Bransten  
Ida Braun  
Janice Bridgham  
Bernice Brown  
Jeanne Brown  
Stephen and Susan Browning  
Amanda Bryan  
Frances A. Bubolz  
Keith Buckingham  
Cheri Buker  
Mary E. Bullard  
Terri Bumgardner  
Lolly and Jay Burke  
Peggy Burks  
Susan and James Burns, Jr.  
Barbara Busch  
Thomas and Madelyn Byron  
Caldwell-Greenwood Family  
Mr. and Mrs. Michael G. Callahan  
Jane and Mark Capobianco  
Chris and Karen Carpenter  
Kathleen Carrai  
Sandra Carroll  
Shirley Carson  
David and Karin Chamberlain  
Peggy Childers  
Delia Chilgren  
Richard and Marsha Chisholm  
Matthew Chotin  
Jean Christensen  
Carol and David Cislowski  
Marjorie Burnett Clarke  
Robert Clegg  
Annette Clute  
Mark Cocalis and Lisa Ann Erburu  
Terry Coddington  
David and Rose Anne Colt  
Alice Comstock  
Mary Connelly



Renate and Robert  
 Coombs  
 Portia Cornell  
 Gail Costa  
 Russell Cox  
 Ruth Craig  
 Yvonne Creteur-Dexters  
 and Christian E. Creteur  
 Gary and Diane Crocker  
 Steven and Dora Croft  
 Katie Cullen  
 Deborah Cupal and  
 Matthew Cupal  
 Michael and Patricia  
 Damsgaard  
 Peter and Melinda Darbee  
 Jacqueline Datin  
 Denise and Gary David  
 Pamela Davis  
 Deirdre Dawson  
 Patricia Day Lollini and  
 Lance Lollini  
 Wynne and Louis Paul De  
 Martini  
 Pamela De Moor  
 David and Ellen De Simone  
 Raj and Helen Desai  
 Sheila Desmond  
 Roxanne Deurloo  
 Marie Doherty  
 Natasha Dolby  
 Robert Dollar and Family  
 Phyllis and Del Domezio  
 Deborah Domitrovich  
 Kerry and Anne Douglas  
 George and Betsy Dunbar  
 Deborah Duncan  
 Kazumi and Lee Duran  
 Ralph Dweck  
 Mrs. George Dyer  
 Martha and Anthony Eason  
 Lydia and William Edison  
 Irene Elliott  
 Sharon and Samuel  
 Esterkyn  
 Heather Evans  
 Brian and Jean Ann Farley  
 Waltraut Fehrmann  
 Sally F. Fenton  
 Wayne L. Fenton  
 Richard Ferraro and Paula  
 Lowe  
 Josephine Ferrie  
 Linda Ferris  
 Arthur Field  
 Peter Fischer  
 Janice Fischler  
 Sally Fleming  
 Barry Flicker and Sharon  
 Norman  
 Patricia Flynn

Kevin Fobes  
 Marilyn Foster  
 Agnes Frank  
 James and Louise Frankel  
 Jeff Freedman  
 Carolyn Fremgen  
 Helen Frevel  
 Robert Friedman  
 Susan J. Friedman and  
 Philip Skehan  
 Lisa Scheff and Theresa  
 Friend  
 Jacqueline Gaffney  
 Carol Gamble  
 Carol Gardner  
 Gordon and Marsha Garry  
 Roxane Geggie  
 Amy Geissingar  
 Margo George  
 Marion Getz  
 Lori Giuliani Patterson and  
 Frank Giuliani  
 Carol Goepferd  
 Sherri and Jared Gold  
 Sharon Goodman  
 Chris and Nina Goodwin  
 Michael and Cinda Gough  
 Doris Green  
 Renee and Gale Greisen  
 Lance Groody  
 Moire and Steve Grumer  
 Nancy Grunbaum  
 Judith and Suresh  
 Gurbaxani  
 Mary Haack  
 Harry Haines  
 John Haines  
 Margaret Hamilton  
 Jan Hansen  
 Judith M. Harada  
 Kathy Haranzo  
 Ruth Hartmann  
 Barbara and E. Phil Hayes  
 Belle Clegg Hays  
 Mary A. Hazard  
 Joyce Healey  
 June Heilman  
 Donald and Nanette  
 Henneuse  
 Michael Hensley  
 Donna and Lawrence  
 Herbst  
 Deborah and Jim  
 Hernandez  
 Michael Herning  
 Bruce and Joan Herriges  
 Larry Herron  
 Harvey and Peggy Hinman  
 Janice Hitchcock  
 Mary Alison Hogan  
 Bruce Holden

Gary and Karen Holm  
 David Hood  
 Wendy L. Howell  
 Joe Hudgens  
 Donna and Charles  
 Huggins  
 Michele and Bill Hunnewell  
 Hildegard W. Huntsman  
 Tom and Cheryl Huse  
 Margaret and John Husher  
 Karen Husher  
 Mary Irwin  
 Elizabeth A. Jackson  
 Susan Jackson  
 Viola and Ronald Jarvis  
 Lisa Jeffrey  
 Marcine Johnson  
 Dorothy Jones  
 Suzanne L. Jones-Elia and  
 Rob Elia  
 William Josephs  
 Mary Lou Joyner  
 Eunice Kamimura  
 Christine Kasman and  
 Michael A. Kasman  
 Marie Kazan-Komarek  
 Candace A. Keene  
 William Keener and Nance  
 Becker  
 Susan Keller  
 Roxanne Kennedy  
 Kevin and Genevieve Kerr  
 Gaynel O'Neil Kew, E.A.  
 Wendy Khoshnevis  
 Donna King  
 John King  
 Nancy Kirita  
 Nancy J. Klokner and  
 David M. Wiseblood  
 Chris Koepcke  
 Frances Kohler  
 Kathy Kovell  
 Keiko Kuroda  
 Juliet Lamont and Phil  
 Price  
 Everdina Lampe  
 Carmen M. Lasar  
 Cathy Laubscher  
 Henneuse  
 Belina Lazzar  
 Sarah Leach and Kenneth  
 Drexler  
 Patrice M. Lee  
 Cathy and Ted Lehmann  
 Patricia Leighfield  
 Linda Hitchins and Steven  
 Lester  
 Ruth Levitan  
 Marlene Leviton  
 Diane Levy  
 Evelyn S. Lewis

Larry Lewis  
 Pamela C. Lillquist and  
 Tadd Bryan  
 Allison Lindman  
 Garth and Mary Lindsey  
 Ms. Patricia Litton and Dr.  
 Peter Ralston  
 Bill and Edy Looz  
 Laurie Lowrance  
 Laura Lubin  
 Marjorie Lulay  
 Noreen Mahoney  
 Siobhan Maize  
 Luz Malan  
 Jane Mangini  
 Joan R. Manini  
 Kristen Mansel  
 Marin Mapstead  
 Hersh Markusfeld  
 Dennis Martino  
 Carol Mattern  
 Jane Maxwell  
 Dorothy and Thomas  
 Mayer  
 Pamela Mazza  
 Pam Mazzoline  
 Anne and Doug McBride  
 George and Patricia  
 McCammon  
 Sharon and Tom  
 McCullough  
 M'Lissa and Thomas  
 McDonald  
 Donald and Nancy McKay  
 June Mellish  
 Julaina and Richard  
 Mendlen  
 James Meredith  
 Sally and David Mikkelsen  
 Dudley and Sarah Miller  
 Lisa and Glenn Miller  
 Gayle and John Minkler  
 Carol A. Minnerop  
 Antoinette Mitchell  
 Myrna E. Mitchner  
 Ellen Moffatt  
 Steve and Cynthia Molino  
 Susan Monell  
 Nicole Montalbano and  
 Jonathan Richman  
 Mr. and Mrs. Thomas R.  
 Moran  
 Mr. C. B. Morton  
 Dorothy W. Murphy and  
 Barbara N. Kopp  
 Emmett Murphy  
 Jean and Maurice Myers  
 Judith Nadai  
 Gloria Nelson  
 Patsy and Paul Nelson  
 Karen Neumeier

David Newbury  
 Judith Ney  
 Barney and Susan  
 Nicholas  
 Maureen and Ronald  
 Nichols  
 Sheila Nielsen  
 Donald J. Nolan  
 Cynthia and James Nourse  
 Donald Nunemaker  
 Nancy Ober  
 Mr. and Mrs. Morris W.  
 Offit  
 Linda Olson  
 Scott and Una Olsson  
 Carol Olwell  
 Erwin Ordeman  
 Joy and Charles O'Rourke  
 Margaret Otto  
 Charles and Joan Palliser  
 Donna Panico  
 Margaret Parks  
 Malcolm O. Partin  
 Kenneth and Elizabeth  
 Pelletier  
 Ezekiel and Janice Perlo  
 Geoffrey F. Peters  
 Pam and Jerry Petrie  
 Damon Phillips  
 Rudy and Patricia Phillips  
 Susan Pilcher  
 Michael J. Piuze  
 Marden N. Plant  
 Kyle and Gary & Joyce  
 Pogue  
 James Porter  
 Oscar Porter  
 Doug Post  
 Richard Prem and Barbara  
 Carr-Prem  
 Jeffrey Price  
 Donna Pritchard  
 Alyce Proctor  
 Paul Proett  
 Linda Purer  
 Mary Purvis  
 Laura and James Putnam  
 Edith Quabeck  
 G. Lorraine Rambo  
 Harry Rasmussen  
 Gordon R. Ray  
 Thomas S. Reavely  
 Ms. Carol Reinhardt and  
 Mr. David Redfearn  
 Vickie Renbarger  
 Laura and Stephen  
 Reynolds  
 Linda and Bruce  
 Richardson  
 Tanya Richardson  
 Ms. Laurose Richter

Julie and Michael  
 Risenhoover  
 Claudia and Lee Rismiller  
 Margaret and Joseph  
 Rivera  
 Diane and Jason Roberts  
 Shirlee Roberts  
 Dr. Jacqueline L. Robertson  
 Nancy Roche  
 Debra Rogers  
 Scot and Anne Rohrer  
 Gwendolyn Rose  
 Joan M. V. Rose  
 Mark and Melanie  
 Rosenzweig  
 Ellen Ross  
 William and Mia Rossiter  
 Thomas Rowley  
 Richard Saffir  
 Katheryn Salter  
 Joseph and Mary Sarro  
 Frank Scafani  
 John and Betsy  
 Scarborough  
 Werner Schaefer  
 Yvonne and Steve Schell  
 Peter Schick  
 Diana P. Scholle  
 Rebecca Lynn Schumann  
 Carol A. Frate and  
 Lawrence Schwantkl  
 Susan and Michael  
 Schwartz  
 Rebecca Schwer  
 Elizabeth Scott  
 Seadrift Association  
 Charlene Selle  
 Leah Shadowens  
 Fay M. Sharer  
 Amy Shepard  
 Stephen Sherwin  
 Stephen P. Silberling  
 Tara and Frances Skeen  
 Michaelen Skronski  
 Charles Slaughter and  
 Molly West  
 Jean Smith  
 Leigh Smith  
 Patricia D. Smith  
 William Snell  
 Archie Soden  
 Magda Soley  
 Ken Sopies  
 Deborah and Michael  
 Sosebee  
 Mary G. Souza  
 James E. Spencer  
 Jacqueline and David  
 Spielberg  
 David and Donna Spilman  
 Clark and Michele Spink

Gary Spratling  
 Ruth Stabile  
 Maria Starr  
 Marc Steinberg and Maria  
 Day  
 Linda and Donald  
 Stephens  
 Rebecca Burgess and  
 Michael Stoddard  
 Dean and Joanne Storkan  
 Eric Strand  
 Joyce Stripe  
 Susan Strong Davis  
 Robert Strouse  
 Christopher Svenson  
 Richard Swinney  
 Robin Taylor and Sacha  
 Holland  
 Donald and Traci Terluin  
 Trilogy Architecture  
 Alice and Ronald Theisen  
 Norman and Dorothy  
 Thomas  
 James and Andrea Tittle  
 Tim Todd and Mace Adams  
 Sally Tracy  
 Peter and Amy Traugot  
 Robert Traut  
 William Tucker  
 Barbara and Donald  
 Turnbull  
 Janet and Peter Turnbull  
 Mary Turner  
 Anonymous  
 Leslie Tyler and Lawrence  
 Less  
 Michael Udelson  
 Sarah Van Ness  
 Clifford Vaughan, Jr.  
 Karyn and Eber Verhovsek  
 Stephen Sherwin  
 Jarmila Vrana and  
 Jaroslava Prossr  
 Marshall L. Walden  
 Arthur Walker, Jr.  
 Larry Walker  
 Mark and Joyce Walker  
 Irene and George Wallace  
 Rob and Karen Wamstad  
 Michael J. Ward  
 Debbie Parnoff and Jason  
 B. Wardly  
 Roxanne Warren  
 Arlene and Matthew  
 Wasserman  
 Patricia Watt  
 Madeline Weaver  
 Sally and Gary Weichert  
 Ginny and Richard Welsh  
 Ruth West  
 Robert and Susan  
 Westerlund

Helene and Alan White  
Mary Ellen White and Jack  
Morton  
Ceil Whitney  
Barbara Whittle  
Christina Wilder  
Stephen Williams  
Glen and Martha Wilson  
Darlene Windisch  
Kevin Wofsy  
Bonni and Miles Woodruff  
Catherine Woods  
Edwin and Jeanne Woods  
L. A. Wurl  
Deborah Wyatt  
William E. Younis  
Shirley Yuen  
Howard Zee  
Paul W. Zgraggen  
Kelly Zolinski  
Jean Zukin  
James Andrew Zurn

## CORPORATIONS, FOUNDATIONS AND ORGANIZATIONS

**\$100,000+**

Anonymous  
Geoffrey C. Hughes  
Foundation, Inc.  
Koret Foundation  
PIER 39 Limited  
Partnership  
The Roberts Foundation

**\$50,000 - \$99,999**

Anonymous  
Elinor Patterson Baker  
Trust  
Dawn  
DMARLOU Foundation  
Thelma Doelger Trust for  
Animals  
McBean Family Foundation  
Oracle Corporate Giving  
Programs  
Wallace Genetic Foundation,  
Inc.

**\$25,000 - \$49,999**

Anonymous  
Bank of America  
The Bothin Foundation  
Cinco Hermanos Fund  
Thelma Doelger Charitable  
Trust

The Samuel E. and Hilda S.  
Duff Trust  
Firedoll Foundation  
Foren Family Foundation  
Glenn A. Haldan Charitable  
Foundation  
The Sato Foundation

**\$10,000 - \$24,999**

The Atmos Foundation  
The Callison Foundation  
Margaret A. Cargill  
Foundation  
Fullerton Family Charitable  
Trust  
The Ginn Family  
Foundation  
Lasky Charitable Lead  
Trust  
Maddie's Fund  
Marisla Foundation  
The Bernard Osher  
Foundation  
Pacific Gas & Electric  
Company  
Eric Roberts Foundation  
The Robison Family  
Foundation  
Dr. Scholl Foundation  
The Schow Foundation  
Union Bank of California  
Wells Fargo  
David P. Wheatland  
Charitable Trust

**\$5,000 - \$9,999**

Anonymous  
Artis Capital Management  
Autodesk, Inc.  
Community Thrift Store  
The David B. Gold  
Foundation  
The Hope and Norman  
Hope Foundation  
Charles Henry Leach II  
Foundation  
Merfin, LLC  
Pacific Service Credit  
Union  
Prime Administration, LLC  
Charles Schwab  
Foundation  
Sunshine Polka-Dot  
Foundation  
The Thornhill Family  
Foundation

**\$2,500 - \$4,999**

Anonymous

Bodega Harbour Women's  
Golf Club  
Chapman & Associates  
Foundation  
Citi Global Impact Funding  
Trust, Inc.  
Community Foundation  
Sonoma County/Shirley  
Ann Spencer Fund for  
The Marine Mammal  
Center  
Dynamic Range Imaging  
Walter & Elise Haas Fund  
The William H. & Mattie  
Wattis Harris Foundation  
The Herbst Foundation,  
Inc.  
The Edward E. Hills Fund  
Insignia Environmental  
McKinsey and Co.  
Noll & Tam Architects  
Charles See Foundation

**\$500 - \$2,499**

Anonymous  
Bishop Pine Fund  
Bank of Marin  
The Barnston-Koutsafis  
Foundation  
Chevron  
The Clorox Company  
Foundation  
Convio  
Copen Family Fund  
The Cray Family  
Foundation  
Susan Strong Davis  
Foundation  
Andrew R. Demar Family  
Foundation, Inc.  
The Dun Foundation  
Econscious  
Simon Edison Foundation,  
Inc.  
The E.D. Foundation  
Econolite Control Products,  
Inc.  
The Gaea Foundation  
The Stephen and Margaret  
Gill Family Foundation  
Stanley F. Goldfein  
Foundation, Inc.  
Guarantee Mailing  
Services, LLC  
Harris myCFO Foundation  
The James and Karen  
Hayman Family Fund of  
the Lutheran Community  
Foundation  
International Interior  
Design Association

The James Irvine  
Foundation  
The Jones-Smith  
Foundation  
Kazan, McClain, Abrams,  
Fernandez  
William and Gretchen  
Kimball Fund  
KPMG LLP  
Sara Lee Foundation  
Bernard Lewis Charitable  
Foundation  
Lucasfilm Foundation  
Lutheran Community  
Foundation  
Cynthia and Merrill  
Magowan Family  
Foundation  
Markmakers Foundation  
McCormick & Kuleto's  
McKesson Foundation, Inc.  
MissionFish  
Morris Animal Foundation  
New Frontiers Natural  
Foods  
The Overbrook Foundation  
Pacific Union Real Estate  
Group  
Paws Up Foundation  
Perch, Inc.  
River and Ocean  
Roll Giving  
The Safeway Foundation  
San Francisco Sentry  
Investment Group  
Sisters of Perpetual  
Indulgence, Inc.  
Stellar Solutions  
Foundation  
Surf Addict  
The Traverse Foundation  
Tupton Osel Choling  
West Marine Products Inc.  
Whole Foods  
Yolo County Sheriff's Posse

## VOLUNTEER HOURS MATCHING

Bank of America  
The Gap  
Google  
KPMG LLP  
Matson Navigation  
Company/Alexander &  
Baldwin, Inc.  
McKesson Foundation  
Sara Lee

## MATCHING GIFT AND WORKPLACE GIVING ORGANIZATIONS

Adobe Matching Gift  
Program  
Allstate Giving Campaign  
Altria Group, Inc.  
AMD Matching Gift  
Program  
America's Charities  
American Express  
Foundation Employee  
Giving Campaign  
Anchor Brewing Co.  
AT&T Foundation  
AT&T United Way Employee  
Giving Campaign  
Avon Products Foundation  
Inc.  
AXA Foundation  
Bank of America Matching  
Gifts Program  
Bank of America United  
Way Campaign  
Bank of The West  
Barclays Global Investors  
Matching Gift Program  
The Boeing Company  
CA, Inc.  
Chevron Humankind  
Employee Funds  
City of Seattle  
CNA Foundation  
Community Foundation of  
Central Illinois  
Countrywide  
DirecTV  
Employee's Community  
Fund of the Boeing  
Company  
Environmental Federation  
of California  
The Fremont Group  
Foundation  
Gap Inc. Giving/Matching  
Campaign  
Genentech Givingstation  
GivingExpress Program  
from American Express  
GlaxoSmithKline  
Foundation  
Global Impact - Applied  
Materials  
Global Impact - BT  
Americas Employee  
Char. Giving Program  
Global Impact - Symantec  
Global Impact - Tellabs

Global Impact- Yahoo  
Google  
Hewlett Packard  
Foundation  
IBM Matching Grants  
Program  
Indiana State Employees  
Community Campaign  
ING Foundation  
Intuit Foundation -  
Matching Gift Program  
Johnson & Johnson  
Matching Gifts Program  
The JP Morgan Chase & Co  
JPMorgan Chase Bank  
Kaiser Permanente  
Community Giving  
Campaign  
KPMG  
Lawrence Livermore Lab  
- UC  
Levi Strauss Foundation  
Local Independent  
Charities of America  
Macy's West GIFT  
Barclays Global Investor  
Matching Gift Center  
Merrill Lynch & Co  
Foundation  
Microsoft Giving Campaign  
Program  
Morgan Stanley  
Motorola Foundation  
National Semiconductor  
The New York Times  
Company Foundation  
Matching Gifts Program  
Nike Employee Matching  
Gift Program  
Oracle Corporation  
Matching Gifts  
Pfizer Foundation  
PG&E Corporation  
Campaign for the  
Community  
The Prudential Foundation  
Quadra Foundation  
Qualcomm Inc.  
Regence  
SAP Matching Gifts  
Program  
Schwab Foundation  
Starbucks Matching Gifts  
Program  
Sun Microsystems  
Synopsys Foundation  
Tenet Healthcare  
Foundation  
Truist  
Tycos Matching Gifts  
Program

Union Bank Of Ca.-Non Bay  
Area  
United Airlines  
United Way  
United Way California  
Capital Region  
United Way Of Los Angeles  
United Way of San Diego  
County  
United Way Of The Bay  
Area  
United Way Special  
Distribution Account  
UnitedHealth Group  
Washington Mutual, Inc.  
Waters Corporation  
Wells Fargo Community  
Support Campaign  
Yahoo! Employee  
Foundation

## CORPORATE ROYALTY PARTNERS

Brown W. Cannon  
Chronicle Books  
Community Thrift Store  
Deborah R. Grabis  
Run100s.com

## VEHICLE DONATION PARTNER

Donate for Charity, Inc.

## GALA SPONSORS

### CALIFORNIA SEA LION

Bank of America  
Heitz Cellars  
Koret Foundation  
Oracle  
PG&E  
Pier 39  
Sandor & Faye Straus/  
The Firedoll Foundation  
The Wall Street Journal  
Wells Fargo

### HARBOR SEAL

Autodesk  
Marjorie Boor  
Cathy Kruttschnitt  
Marin Community  
Foundation  
Glen Mathison and Zoel  
Fages

Prime Group  
St. Supéry Vineyards &  
Winery  
Union Bank

**NORTHERN ELEPHANT**

Noll & Tam Architects  
Val & Jerry Gibbons  
Susan Grau  
Betty and William Hasler  
Beth Inadomi and Tim  
Newell  
Karen Johnson-McKewan  
and  
Tom McKewan  
Sunny and Mark McKee  
Janecke and Peter Stauffer

**NORTHERN FUR SEAL**

Waltraud Finch  
Florence & Steven Goldby  
Marcia & John Goldman  
The Edward E. Hills Fund  
Insignia Environmental  
Joanne & Paul Maxwell  
McCormick & Kuleto's  
Restaurant  
Run100s.com  
Gayle & Lloyd Smalley  
Beverly Spector & Ken  
Lipson  
Patricia Zuch & William  
Werner

**SPECIAL  
ACKNOWLEDGMENT**

Drew Altizer  
American Audiovisual  
Susan Anthony  
Aquarium of the Bay  
Marjorie Boor  
Richard Cassam  
The Economist  
Susan Grau  
Dr. Frances Gulland  
The Inn at Spanish Bay,  
Pebble Beach  
Kate's Blossoms of  
Sausalito  
Dr. Charles Littnan  
Merrill Magowan  
Jeff Massanari Trio  
McCormick & Kuleto's  
Restaurant  
Nick's Cove  
PIER 39  
Kathy Reilly  
Colleen Buckley-Reynolds  
& David Reynolds

The Ritz Carlton Staff  
San Francisco Chronicle  
San Francisco Giants  
Frank Vega  
West Marine

**GALA FUND-A-NEED**

Dale Alison Anania  
John and Janis Appleton  
Elizabeth Avakian  
Julia T. Bernard  
David Blake  
Jeff Boehm and Keith  
Rosenthal  
Samuel Bozzette  
William Bradley  
Wendy Brainerd  
Pat Callahan  
Chad and Ed Carlson  
Chronicle Books  
Scott Clawson and Maggie  
Lim  
Cyndi Connors  
Michel and Laura Conrad  
Kenneth A. Coren  
Janis and Michael  
Crawford  
Kristin Culp  
Caroline L. Dietrich  
Ed Diller  
Sherrill Dunning-Riley  
Kathy Estes-Morgan and  
Rod Morgan  
Christina Fairbanks  
Maria Falzone  
Deborah Fauquier  
Lisa Fung  
Sheila Giannini  
Val and Jerry Gibbons  
Jody Gibney  
Bettina Glenning  
Lori Glennon  
Google  
Alexandra Gordon  
Doug Hailey  
Lynne Hermle and Craig  
Collins  
Jacquie Hilterman  
Beth Inadomi and Tim  
Newell  
Eric Joe  
Rebecca Johnson  
Karen Johnson-McKewan  
and  
Tom McKewan  
Susan Kagan Waitkus  
Vladimir Kats  
Marie Kazan-Komarek  
Tera Killip  
Michael Kleeman

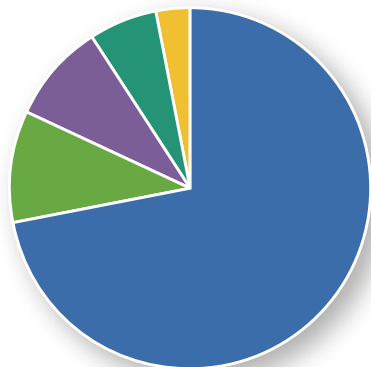
Catherine Kruttschnitt  
Kathryn Edward and  
Kermit Kubitz  
Jennifer and William  
Larzelere  
Joanne L. Lasnier  
Glen Mathison and Zoel  
Fages  
Mary Ann McCleary  
Lawrence and Jamie  
McCullough  
Sunny and Mark McKee  
Nancy Merchant  
Christy Mignacca  
Noel S. Moossa  
Catherine and Ronald  
Moreland  
Edwina and Michael Mule  
Lynne Murrell  
Lesta Nadel  
Rick Norkin  
John O'Meara  
Ingrid M. Overgard  
Debra Paterson  
Kathleen and Joseph  
Patterson  
Kimberly Pauter  
Kathy Paver  
Janet Lee Redmond  
David Reynolds  
and Colleen  
Buckley-Reynolds  
Julie and Martin Richards  
Keith Richardson  
Karen and Larry  
Rosenstein  
Scott Rubin  
Gina Sanfilippo and  
Frederick Roeber  
Alexandra Sangmeister  
Susan Sawade  
Lincoln Shaw  
Kari L. Shields  
Carol and John Simon  
William Snell  
Heidi Stangvik  
James S. Stock  
Faye & Sandor Straus -  
Firedoll Foundation  
Christopher Svenson  
William and Anna Van  
Bonn  
Rob and Karen Wamstad  
Jean and Phil Warren  
Leigh Wasson  
Carol Watson  
Tasha Welch  
Deb Wickham  
Patricia and Brian Wilson  
Robert Wilson  
.....



# FINANCIAL SUMMARY

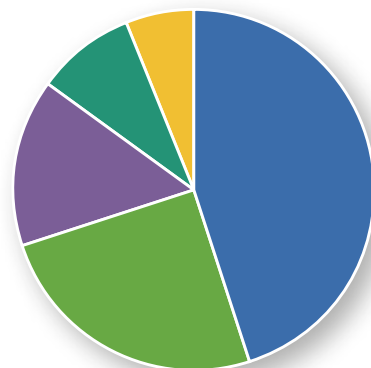
September 30, 2009

## SUPPORT AND REVENUE



|   |     |
|---|-----|
| ■ Contributions from foundations, corporations, members and individuals | 72% |
| ■ Donated materials and services  | 10% |
| ■ Education programs and retail revenue                                 | 9%  |
| ■ Other revenue   | 6%  |
| ■ Government grants and contracts                                       | 3%  |

## EXPENDITURES



|  |     |
|--|-----|
| ■ Veterinary science and animal rehabilitation | 46% |
| ■ Education programs and retail cost of sales  | 24% |
| ■ Fundraising-Operations                       | 15% |
| ■ Supporting Services                          | 9%  |
| ■ Fundraising-Capital Campaign                 | 6%  |

## Statement of financial position

### ASSETS

|                               |                   |
|-------------------------------|-------------------|
| Cash and cash equivalents     | 1,136,346         |
| Short-term investments        | 57,642            |
| Contributions receivable      | 2,590,909         |
| Investments at market         | 1,516,191         |
| Inventories                   | 154,064           |
| Equipment and structures      | 29,383,154        |
| Deposits and prepaid expenses | 125,009           |
| <b>Total Assets</b>           | <b>34,963,315</b> |

### LIABILITIES

|                          |                  |
|--------------------------|------------------|
| Accounts payable         | 977,623          |
| Notes payable            | 2,950,000        |
| Accrued liabilities      | 431,084          |
| <b>Total Liabilities</b> | <b>4,358,707</b> |

### NET ASSETS

|   |                   |
|---|-------------------|
| Unrestricted                            | 29,498,794        |
| Temporarily restricted                  | 489,710           |
| Permanently restricted                  | 616,104           |
| <b>Total Net Assets</b>                 | <b>30,604,608</b> |
| <b>Total Liabilities and Net Assets</b> | <b>34,963,315</b> |

Audited financial statements for the year ended September 30, 2009, prepared by Louie & Wong, are available at The Marine Mammal Center's administrative offices, Chief Financial and Operations Officer, 415-289-7336.

## Statement of activities

### SUPPORT AND REVENUE

|  |                  |
|--|------------------|
| Membership dues                                  | 1,061,766        |
| Private contributions                            | 3,533,449        |
| Government contributions                         | 200,279          |
| Endowment funds                                  | 88,399           |
| Contributed services and equipment <sup>1</sup>  | 637,200          |
| Educational programs                             | 85,236           |
| Store sales                                      | 477,965          |
| Interest income                                  | 132,006          |
| Other revenue                                    | 88,871           |
| Special event revenue, net of expense            | 92,198           |
| Realized and unrealized net gains on investments | 80,573           |
| <b>Total Support and Revenue <sup>2</sup></b>    | <b>6,477,942</b> |

### EXPENDITURES

|  |                  |
|--|------------------|
| Program services:                        |                  |
| Veterinary science                       | 3,219,974        |
| Educational programs                     | 1,724,353        |
| Fundraising:                             |                  |
| Operations                               | 1,050,253        |
| Capital Campaign                         | 398,942          |
| Supporting Services                      | 623,579          |
| <b>Total Expenditures <sup>1</sup></b>   | <b>7,017,101</b> |
| <b>Change in Net Assets <sup>3</sup></b> | <b>(539,159)</b> |

(1) Not included are 104,000 hours of volunteer services, valued at \$1,200,000 based on California minimum wage, that were received during the fiscal year ending September 30, 2009.

(2) Total support and revenue includes \$273,000 from the capital campaign.

(3) The net deficit relates primarily to increased depreciation from our new Sausalito facility.



## The Marine Mammal Center®

2000 Bunker Road  
Fort Cronkhite  
Sausalito, CA 94965-2619  
T 415.289.SEAL  
F 415.289.7333  
[www.MarineMammalCenter.org](http://www.MarineMammalCenter.org)

Monterey Bay:  
PO Box 778  
Moss Landing, CA 95039  
T 831.633.6298  
F 831.633.5927

San Luis Obispo:  
1385 Main Street  
Morro Bay, CA 93442  
T 805.771.8300  
F 805.771.8304

Anchor Bay-Fort Bragg:  
T 415.289.SEAL

### Our mission

To expand knowledge about marine mammals – their health and that of their ocean environment – and inspire their global conservation.

### Our work

Our core work is the **rescue and rehabilitation** of sick and injured marine mammals, supported by state-of-the-art animal care and research facilities, a corps of dedicated volunteers, and an engaged community. We partner with leading scientists and other professionals in order to learn from the patients in our care – patients from healthy, endangered, and at-risk populations – and to **expand and advance scientific knowledge**, thus enhancing understanding of the health of our oceans and the implications for human health. We **disseminate knowledge** to members of the scientific community and the general public. We ultimately inspire action and foster stewardship towards the care of our environment.

### Our values

- Respect for the innate importance of each animal in our care.
- Respect for the environment in which our patients live and that we share.
- A commitment to uphold the highest standards of animal care and animal welfare.
- A rigorous pursuit of science and a commitment to scientific integrity.
- Appreciation for the invaluable contributions of our volunteers, without whom we could not exist.
- Recognition that all members of our community – volunteers, donors, staff, and directors – are essential to the pursuit and success of our mission and deserve our respect.
- A pursuit of our mission that encourages innovation, collaboration, and teamwork.