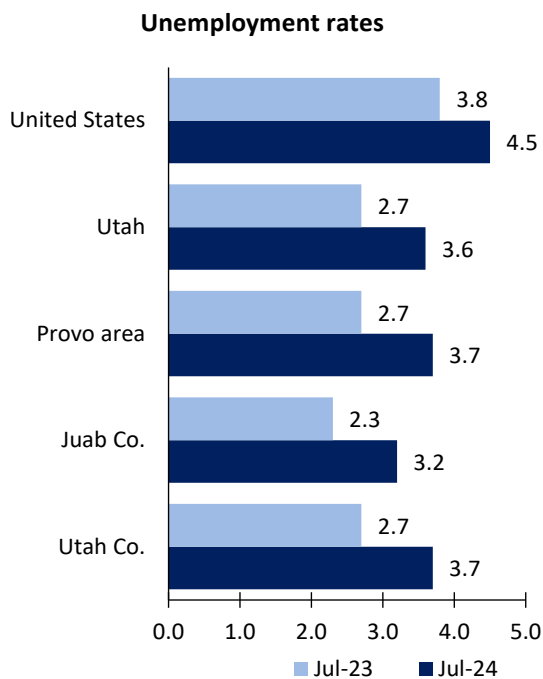


# Provo Area Economic Summary

Updated August 29, 2024

This summary presents a sampling of economic information for the area; supplemental data are provided for regions and the nation. Subjects include **unemployment, employment, wages, prices, spending, and benefits**. All data are not seasonally adjusted and some may be subject to revision. Area definitions may differ by subject. For more area summaries and geographic definitions, see [www.bls.gov/regions/economic-summaries.htm](http://www.bls.gov/regions/economic-summaries.htm).

## Unemployment rates for the nation and selected areas



Source: U.S. BLS, Local Area Unemployment Statistics.

## Average weekly wages for all industries by county

Provo area, fourth quarter 2023

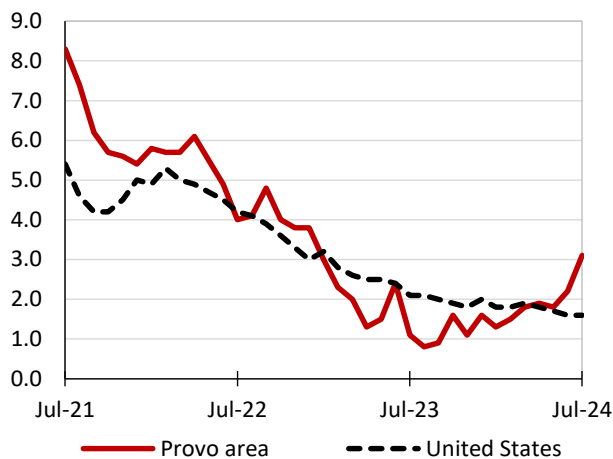
(U.S. = \$1,435; Area = \$1,206)



Source: U.S. BLS, Quarterly Census of Employment and Wages.

## Over-the-year changes in employment on nonfarm payrolls and employment by major industry sector

### 12-month percent changes in employment



Source: U.S. BLS, Current Employment Statistics.

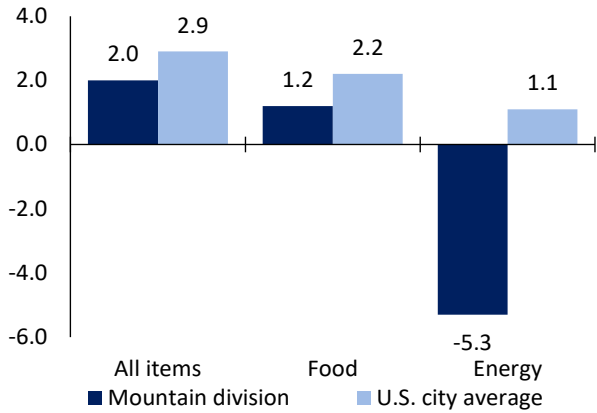
Provo area employment (number in thousands)	Jul. 2024	Change from Jul. 2023 to Jul. 2024	
		Number	Percent
Total nonfarm	310.1	9.2	3.1
Mining, logging, and construction	34.9	3.5	11.1
Manufacturing	24.7	0.3	1.2
Trade, transportation, and utilities	46.9	0.0	0.0
Information	12.9	-0.4	-3.0
Financial activities	13.3	0.2	1.5
Professional and business services	45.8	-0.1	-0.2
Education and health services	62.8	4.6	7.9
Leisure and hospitality	29.6	0.6	2.1
Other services	7.6	0.2	2.7
Government	31.6	0.3	1.0

Source: U.S. BLS, Current Employment Statistics.



Over-the-year change in the prices paid by urban consumers for selected categories

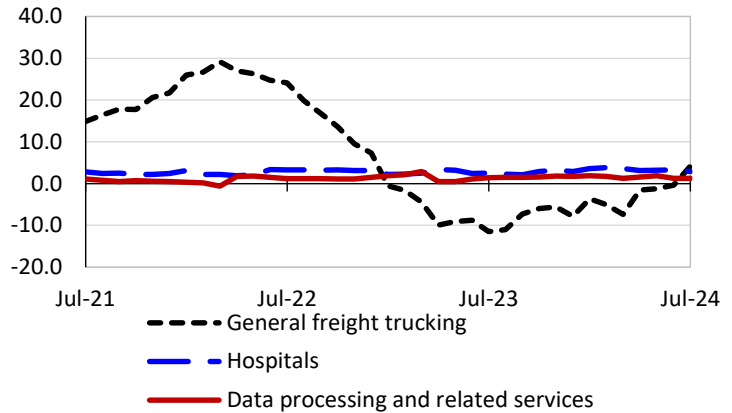
12-month percent change in CPI-U, July 2024



Source: U.S. BLS, Consumer Price Index.

Over-the-year changes in the selling prices received by producers for selected industries nationwide

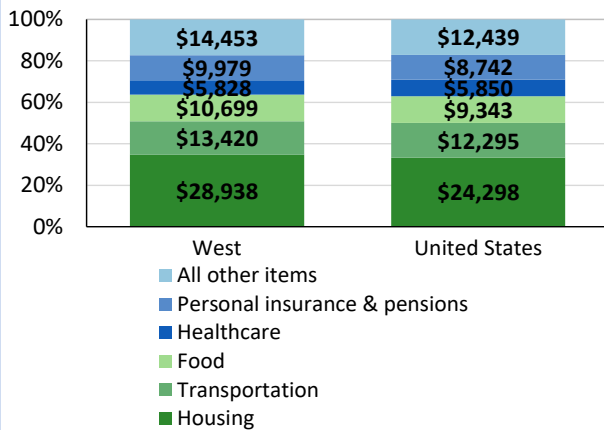
12-month percent changes in PPI



Source: U.S. BLS, Producer Price Index.

Average annual spending and percent distribution for selected categories

Average annual expenditures, United States and West, 2022



Source: U.S. BLS, Consumer Expenditure Survey.

Average hourly wages for selected occupations

Occupation	Provo area	United States
All occupations	\$28.89	\$31.48
Software developers	60.56	66.40
General and operations managers	52.89	62.18
Construction laborers	23.56	23.69
Office clerks, general	19.86	20.94
Customer service representatives	19.08	20.92
Fast food and counter workers	13.65	14.48

Source: U.S. BLS, Occupational Employment and Wage Statistics, May 2023.

Employer costs per hour worked for wages and selected employee benefits by geographic division

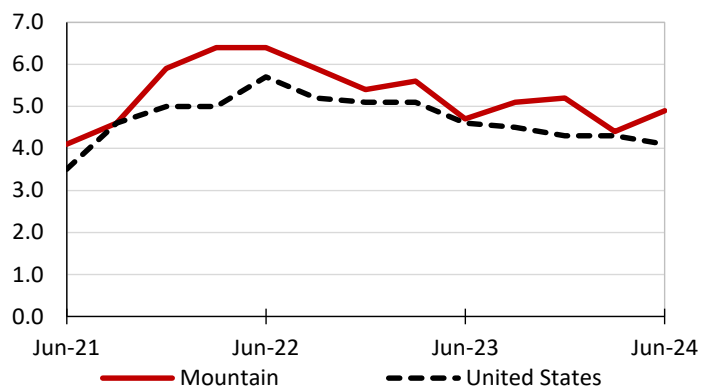
Private industry, March 2024	Mountain (1)	United States
Total compensation	\$38.29	\$43.78
Wages and salaries	27.54	30.76
Total benefits	10.76	13.02
Paid leave	2.65	3.31
Vacation	1.31	1.69
Supplemental pay	1.42	1.77
Insurance	2.64	3.20
Retirement and savings	1.13	1.52
Legally required benefits	2.91	3.21

(1) The states that compose the Mountain census division are: AZ, CO, ID, MT, NV, NM, UT, and WY.

Source: U.S. BLS, Employer Costs for Employee Compensation.

Over-the-year changes in wages and salaries

12-month percent changes in ECI



Source: U.S. BLS, Employment Cost Index.

