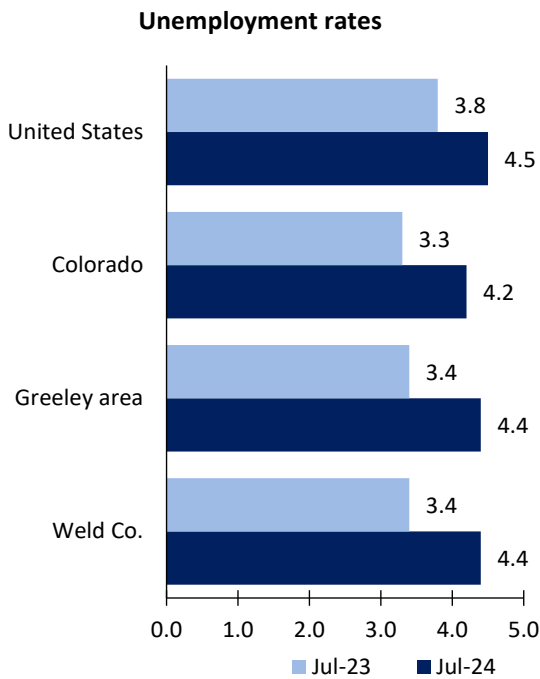


Greeley Area Economic Summary

Updated August 29, 2024

This summary presents a sampling of economic information for the area; supplemental data are provided for regions and the nation. Subjects include **unemployment, employment, wages, prices, spending, and benefits**. All data are not seasonally adjusted and some may be subject to revision. Area definitions may differ by subject. For more area summaries and geographic definitions, see www.bls.gov/regions/economic-summaries.htm.

Unemployment rates for the nation and selected areas



Source: U.S. BLS, Local Area Unemployment Statistics.

Average weekly wages for all industries by county

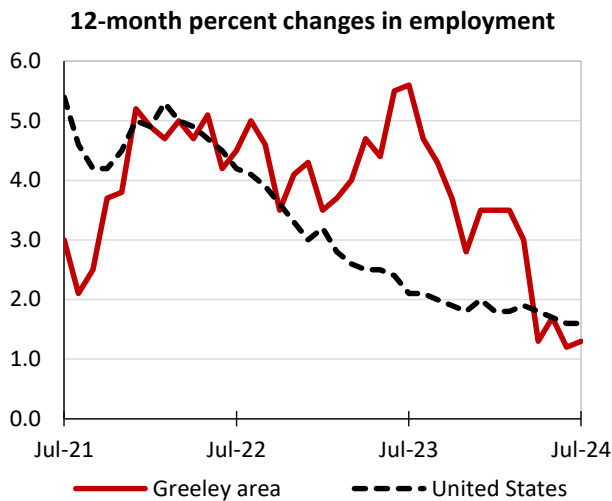
Greeley area, fourth quarter 2023

(U.S. = \$1,435; Area = \$1,269)



Source: U.S. BLS, Quarterly Census of Employment and Wages.

Over-the-year changes in employment on nonfarm payrolls and employment by major industry sector



Source: U.S. BLS, Current Employment Statistics.

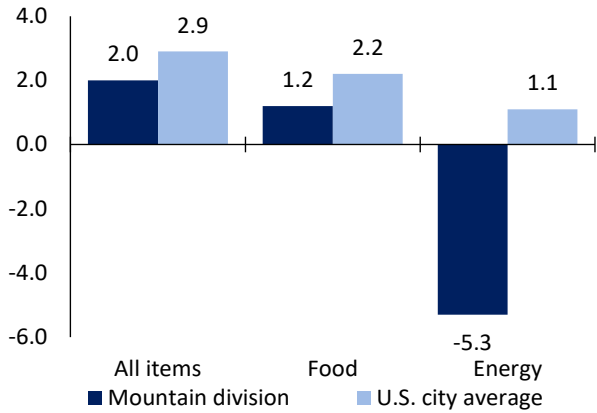
Greeley area employment (number in thousands)	Jul. 2024	Change from Jul. 2023 to Jul. 2024	
		Number	Percent
Total nonfarm	116.4	1.5	1.3
Mining, logging, and construction	18.8	-0.9	-4.6
Manufacturing	14.7	0.8	5.8
Trade, transportation, and utilities	20.1	0.2	1.0
Information	0.5	-0.1	-16.7
Financial activities	4.5	0.0	0.0
Professional and business services	12.5	-0.4	-3.1
Education and health services	11.5	0.2	1.8
Leisure and hospitality	11.1	0.2	1.8
Other services	3.6	0.0	0.0
Government	19.1	1.5	8.5

Source: U.S. BLS, Current Employment Statistics.



Over-the-year change in the prices paid by urban consumers for selected categories

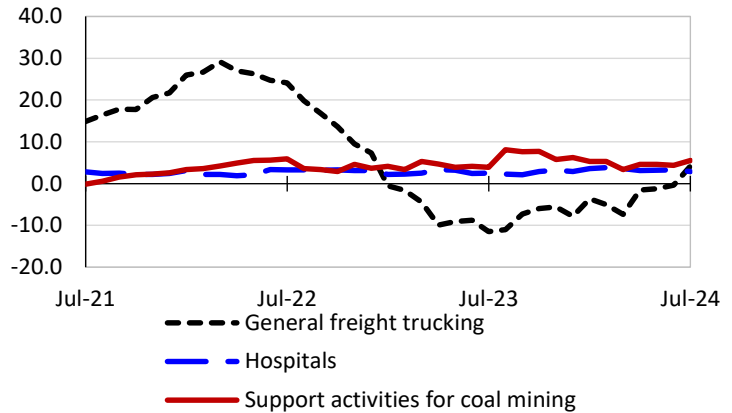
12-month percent change in CPI-U, July 2024



Source: U.S. BLS, Consumer Price Index.

Over-the-year changes in the selling prices received by producers for selected industries nationwide

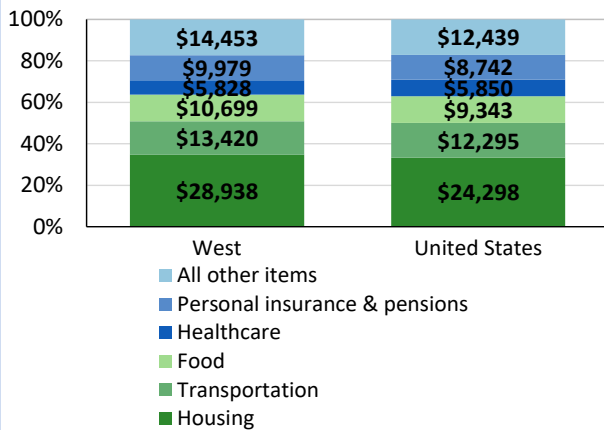
12-month percent changes in PPI



Source: U.S. BLS, Producer Price Index.

Average annual spending and percent distribution for selected categories

Average annual expenditures, United States and West, 2022



Source: U.S. BLS, Consumer Expenditure Survey.

Average hourly wages for selected occupations

Occupation	Greeley area	United States
All occupations	\$29.99	\$31.48
Service unit operators, oil and gas	29.35	28.55
Heavy and tractor-trailer truck drivers	27.68	26.92
Bookkeeping, accounting, and auditing clerks	24.25	23.84
Construction laborers	21.53	23.69
Stockers and order fillers	20.69	18.27
Fast food and counter workers	15.49	14.48

Source: U.S. BLS, Occupational Employment and Wage Statistics, May 2023.

Employer costs per hour worked for wages and selected employee benefits by geographic division

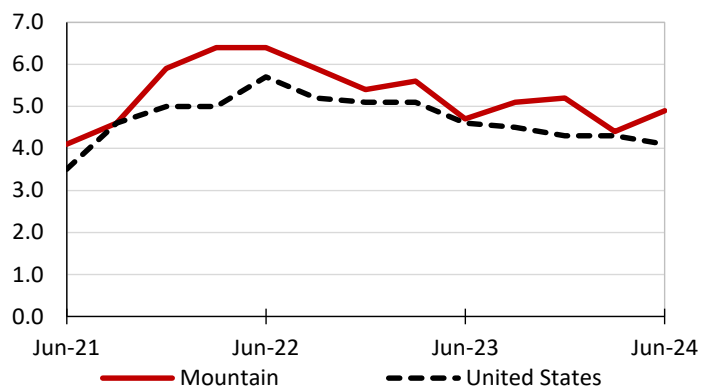
Private industry, March 2024	Mountain (1)	United States
Total compensation	\$38.29	\$43.78
Wages and salaries	27.54	30.76
Total benefits	10.76	13.02
Paid leave	2.65	3.31
Vacation	1.31	1.69
Supplemental pay	1.42	1.77
Insurance	2.64	3.20
Retirement and savings	1.13	1.52
Legally required benefits	2.91	3.21

(1) The states that compose the Mountain census division are: AZ, CO, ID, MT, NV, NM, UT, and WY.

Source: U.S. BLS, Employer Costs for Employee Compensation.

Over-the-year changes in wages and salaries

12-month percent changes in ECI



Source: U.S. BLS, Employment Cost Index.

